

- NOTES:
1. SLOPE OF HORIZONTAL PIPING TO BE MINIMUM OF 3 PER 305 mm.
  2. SLOPE OF TRAP ARM MUST BE 6 PER 305 mm.
  3. ALL PIPE AND FITTINGS TO BE ASSEMBLED WITH SOLVENT 004020-01-000 (USA), 004020-02-000 (CAN)
  4. USE SMOOTH PLUMBERS PUTTY 167459-01-000 TO SEAL STRAINER (0.2 PER STRAINER).
  5. SEAL AROUND SHOWER WITH SILICONE.
  6. VENT PIPE MUST PROJECT 51 MIN AND 64 MAX ABOVE ROOF FOR PROPER FIT AND FUNCTION. ADD S-1 (116666-01-CHT SEAL-VENT PIPE) AROUND PIPE ON ROOF BEFORE VENT CAP IS INSTALLED.
  7. SECURE VENT PIPE TO TANK WITH CLAMP 062401-02-000.
  8. SECURE DRAINAGE PIPES TO CABINET USING WIRE TIE 108046-02-000, AND SCREW 000G67-10-12U AT INTERVALS OF NOT OF NOT MORE THAN 4 FEET APART.
  9. SEE DRAWING 061607 FOR INSTALLATION OF GROMMETS.
  10. USE TEFLON TAPE 010405-01-000 FOR PUMP TO A-12 CONNECTION.

265 CODES/STDS-CSA/CMVSS  
 1B1 CODES/STANDARDS-USA

		COPYRIGHT 2014 WINNEBAGO INDUSTRIES, INC.
DFTR	ORIG. DATE	
CHKR	ALL DIMENSIONS ARE IN MILLIMETERS	
P.E.		
M.E.	FIRST USED	
DSNR	14 E35F	
UNSPECIFIED TOLERANCES ARE:		MATERIAL:
WHOLE DIM (X)	: 3	
ONE-PLACE (X.X)	:	
TWO-PLACE (X.XX)	:	
ANGLE	:	
THIRD ANGLE PROJECTION		
DO NOT SCALE DRAWING		REFER TO ES0018 FOR FASTENER TIGHTENING GUIDELINES
TITLE: DRAINAGE SYSTEM INSTL		
SHEET 1 OF 4	PART NO 184812	REV
REF:	1	01-Apr-2014

FOR  
DRAINAGE  
CALLOUTS  
SEE DWG NO  
116229-01-000

\* 184812 \* A

8

7

6

5

4

3

2

1

8

7

6

5

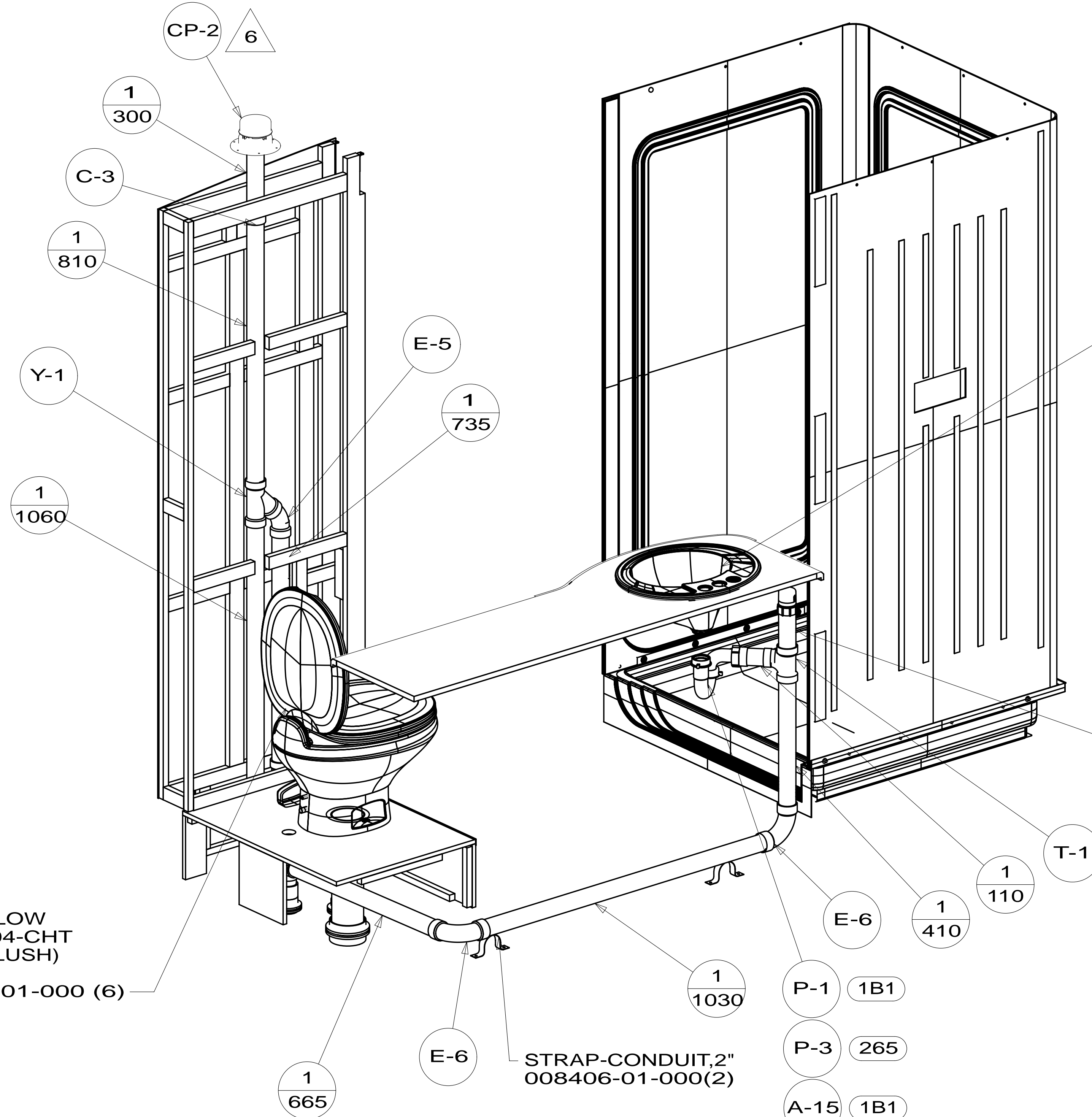
4

3

2

1

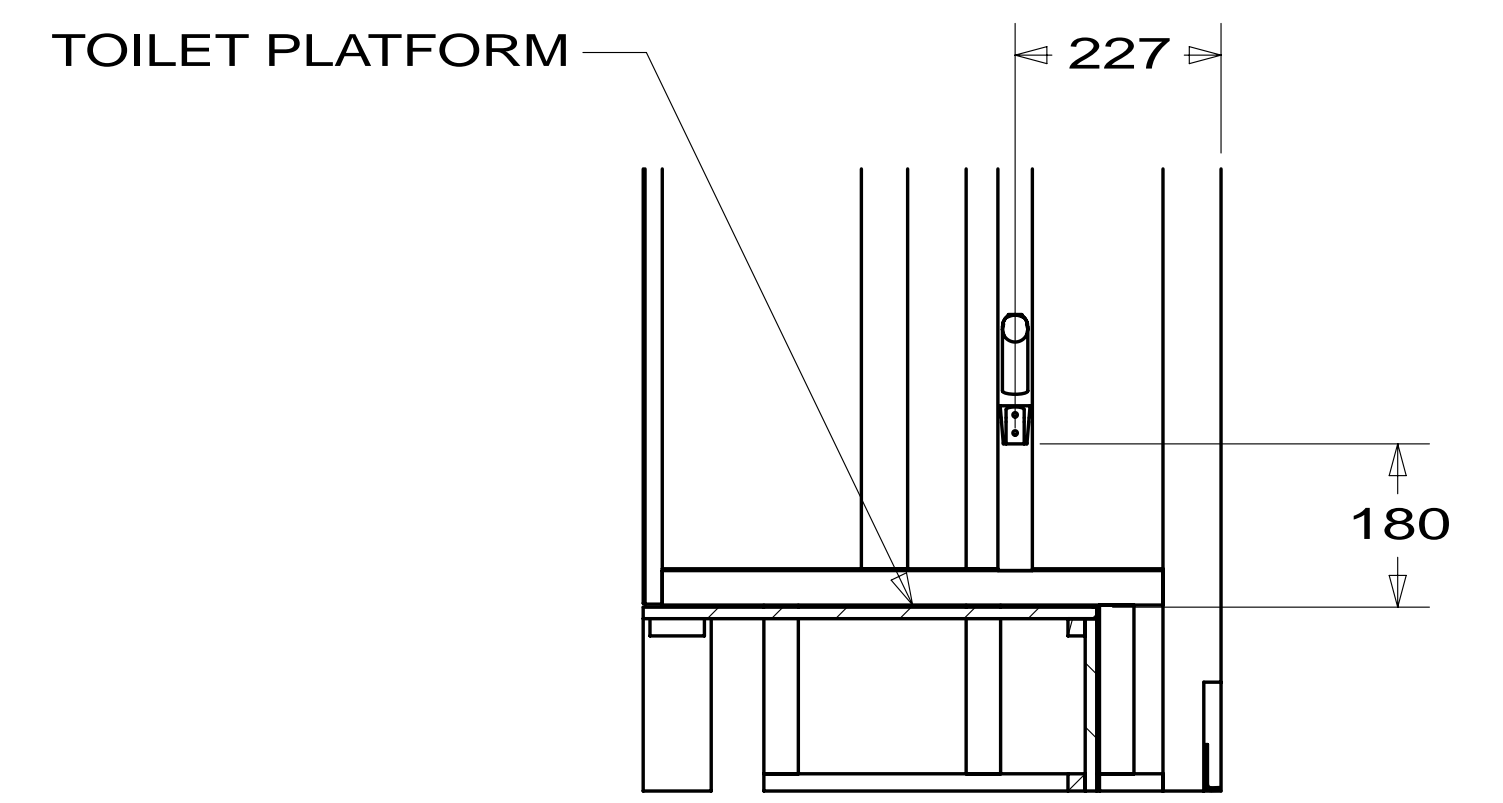
\*184812 \*A



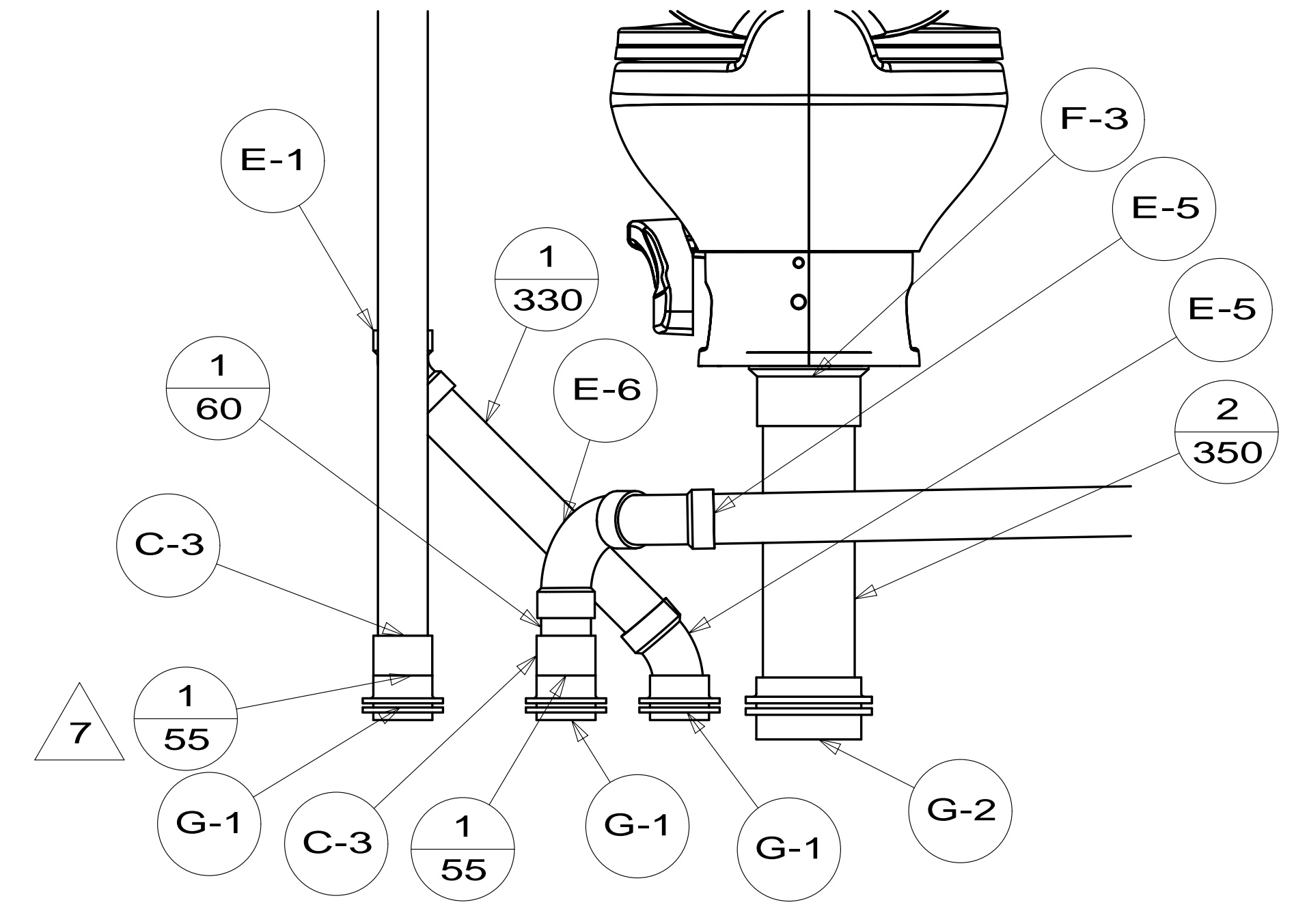
VIEW A

SINK-LAV  
164615-01-CHT  
STRAINER  
106116-01-CHT  
SEAL  
091255-03-000  
(1300)

TOILET, LOW  
160815-04-CHT  
(HAND FLUSH)  
SCREW  
087721-01-000 (6)



SECTION BA-BA



VIEW D  
(SHOWN W/OUT CABINETS AND FLOOR)

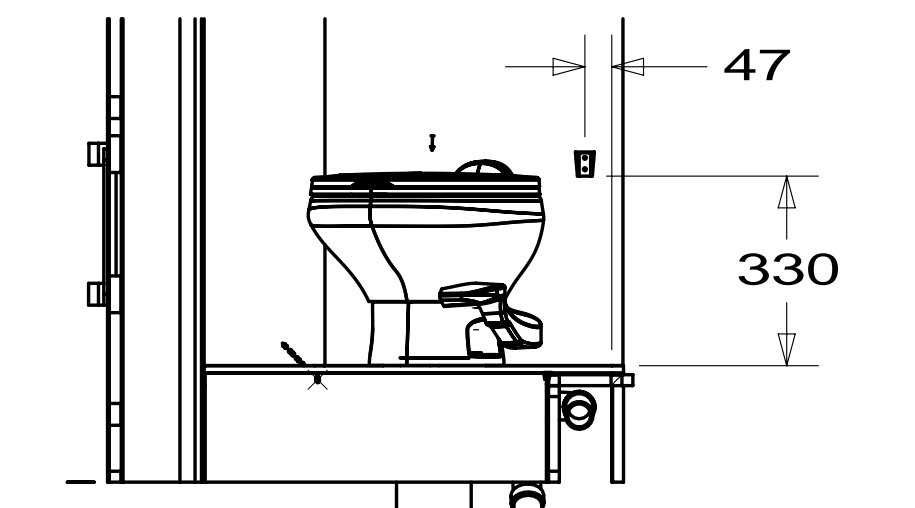
FIRST USED	14 E35F		
TITLE:	DO NOT SCALE DRAWING		
	DRAINAGE SYSTEM INSTL		
SHEET 2	PART NO	184812	REV
			01-Apr-2014

TOILET, LOW  
160815-04-CHT  
(HAND FLUSH)  
SCREW  
087721-01-000 (6)

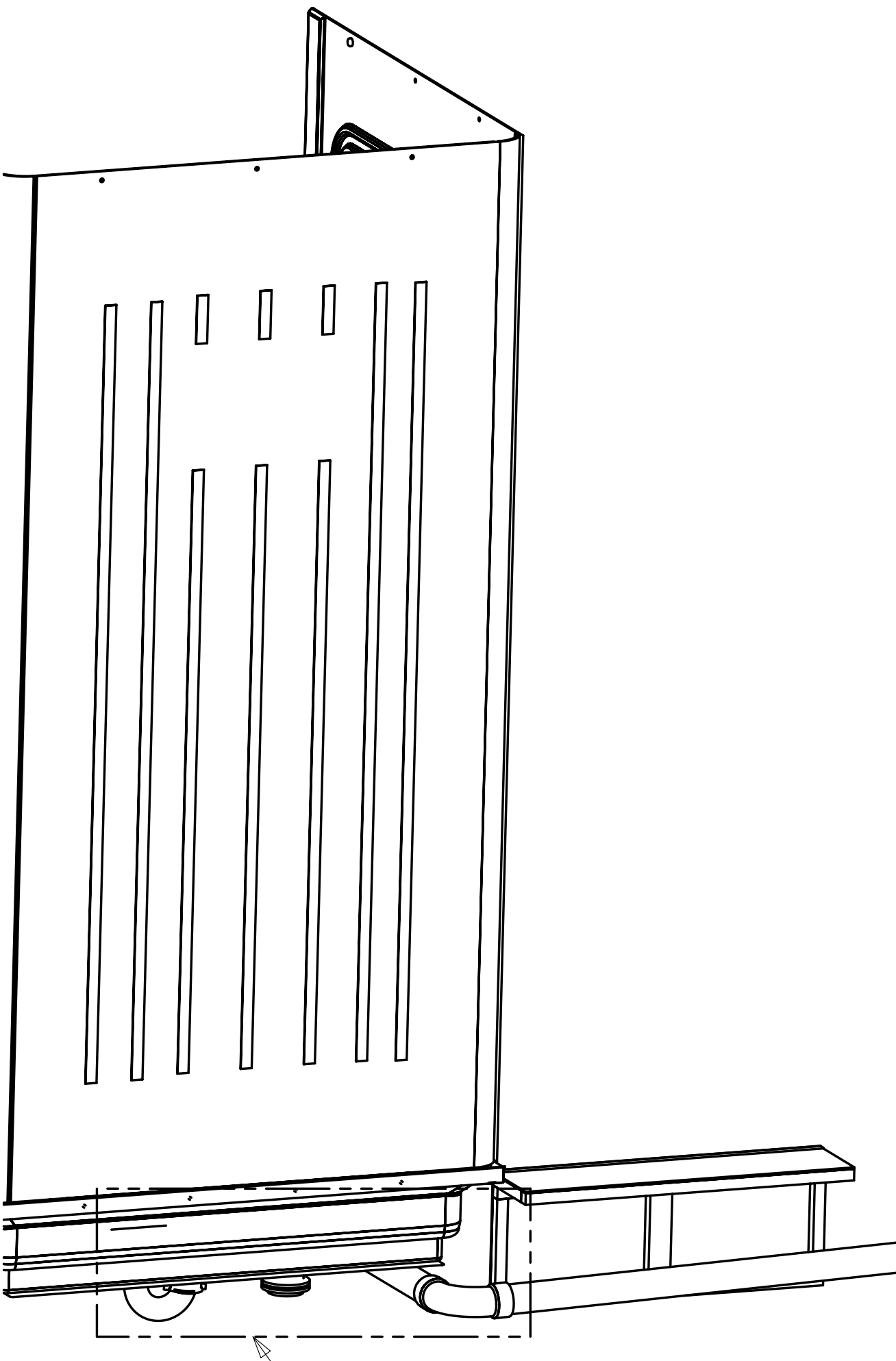
SINK-LAV  
164615-01-CHT  
STRAINER  
106116-01-CHT  
SEAL  
091255-03-000  
(1300)

SINK-GALLEY, DBL  
179864-01-CHT  
STRAINER  
092303-01-000 (2)  
BRACKET & SCREWS  
(SUPPLIED WITH SINK)  
SEAL  
091255-03-000  
(2130)

SHOWER INSTL-ENCLOSURE  
174527-01-000  
STRAINER  
066440-01-000  
TAILPIECE  
011069-06-000  
RUBBER WASHER  
127440-02-CHT  
NUT  
130403-02-000



SECTION CA-CA

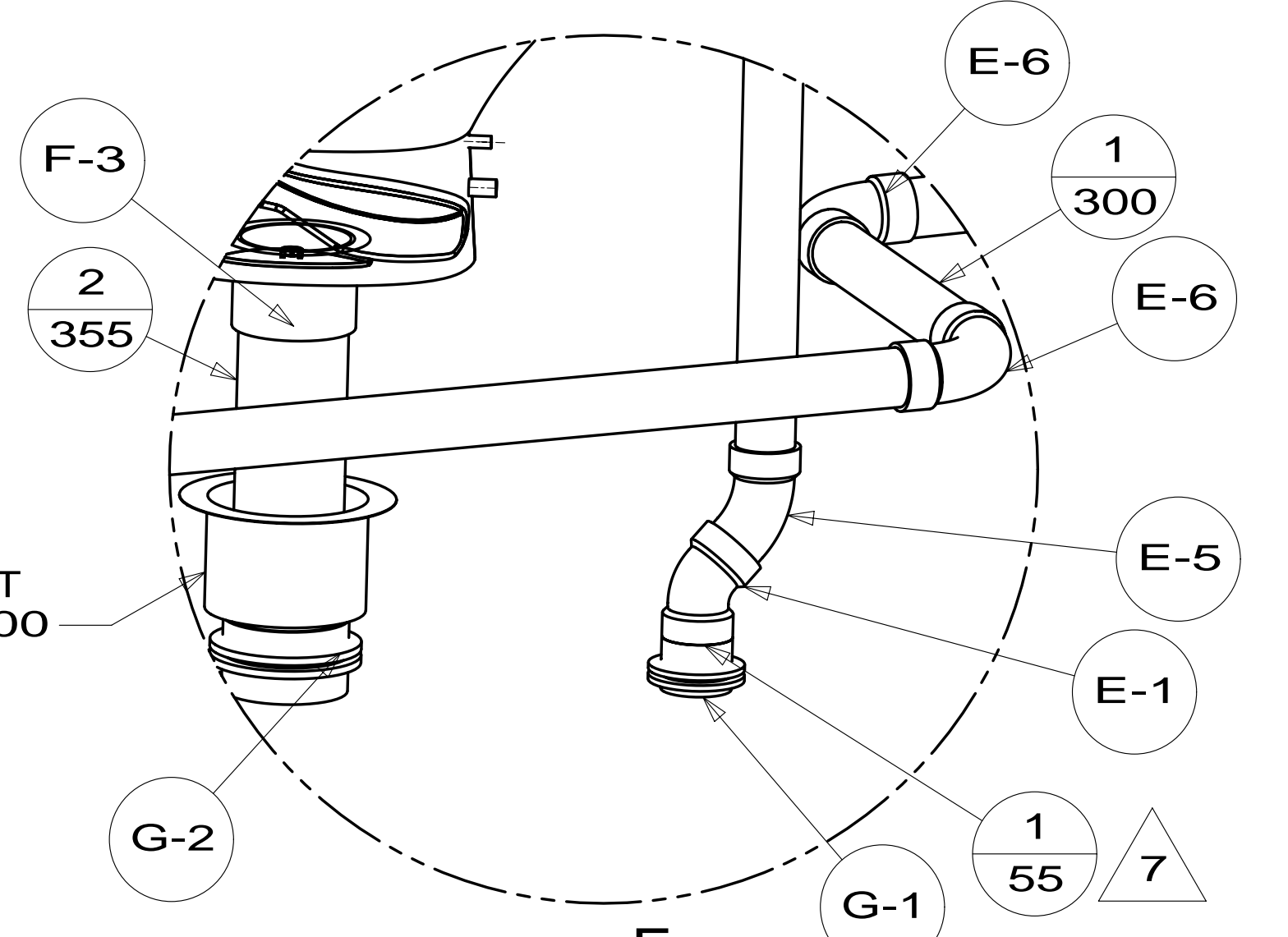


DETAIL C

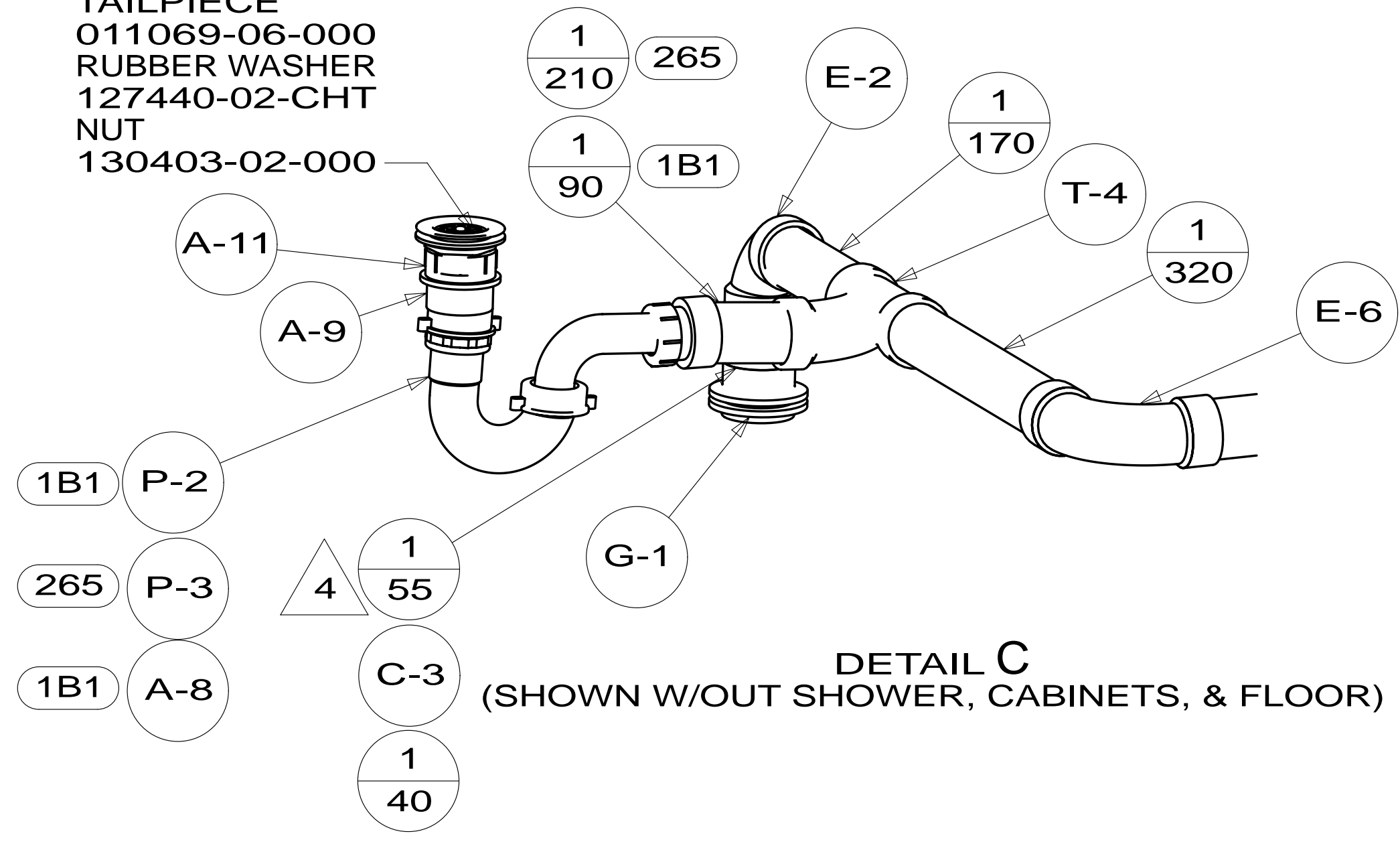
STRAP-CONDUIT, 2"  
008406-01-000(2)

VIEW B

DETAIL E



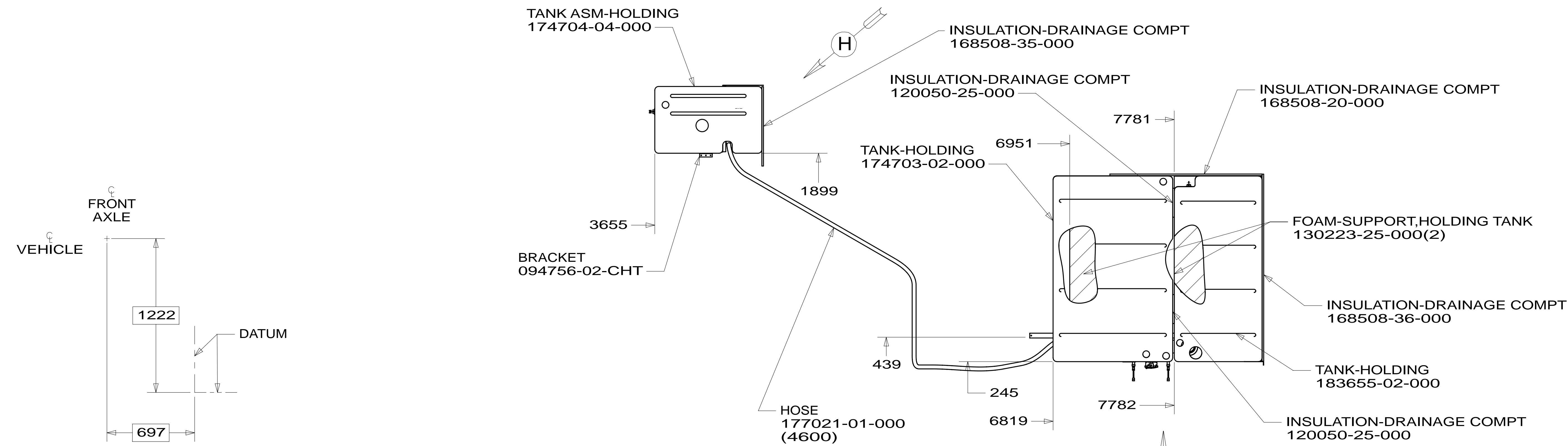
DETAIL E  
(SHOWN W/OUT CABINETS & FLOOR)



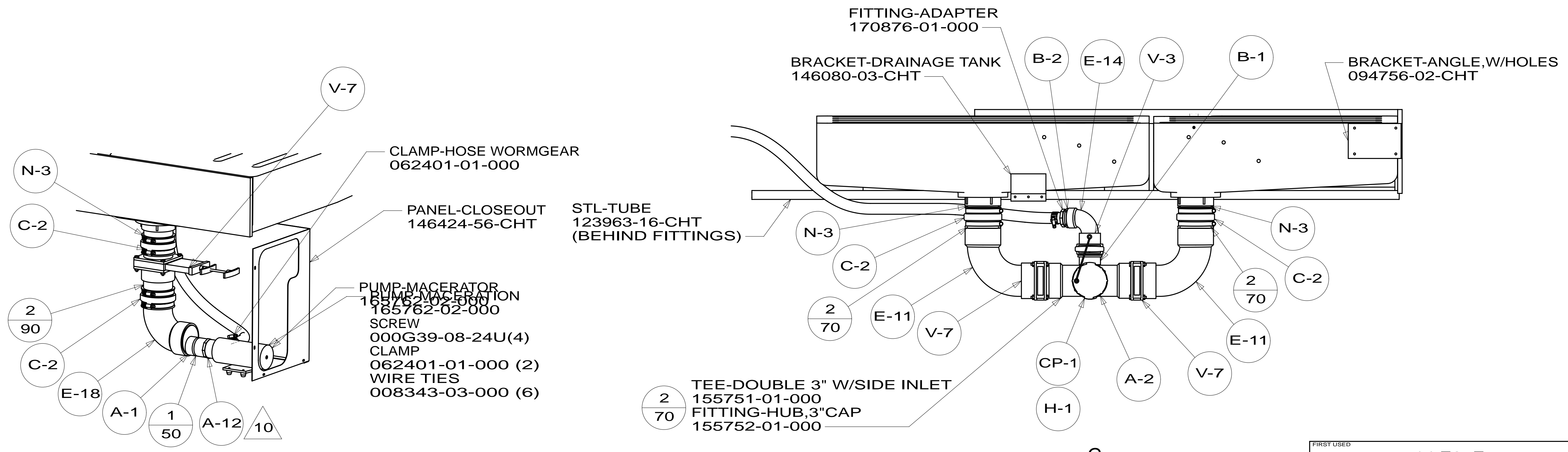
DETAIL C  
(SHOWN W/OUT SHOWER, CABINETS, & FLOOR)

FIRST USED	14 E35F
DO NOT SCALE DRAWING	
TITLE: DRAINAGE SYSTEM INSTL	
SHEET 3	PART NO 184812 REV
1 01-Apr-2014	

\*184812 \*A



TOP VIEW SHOWING TANKS AND DRAINS

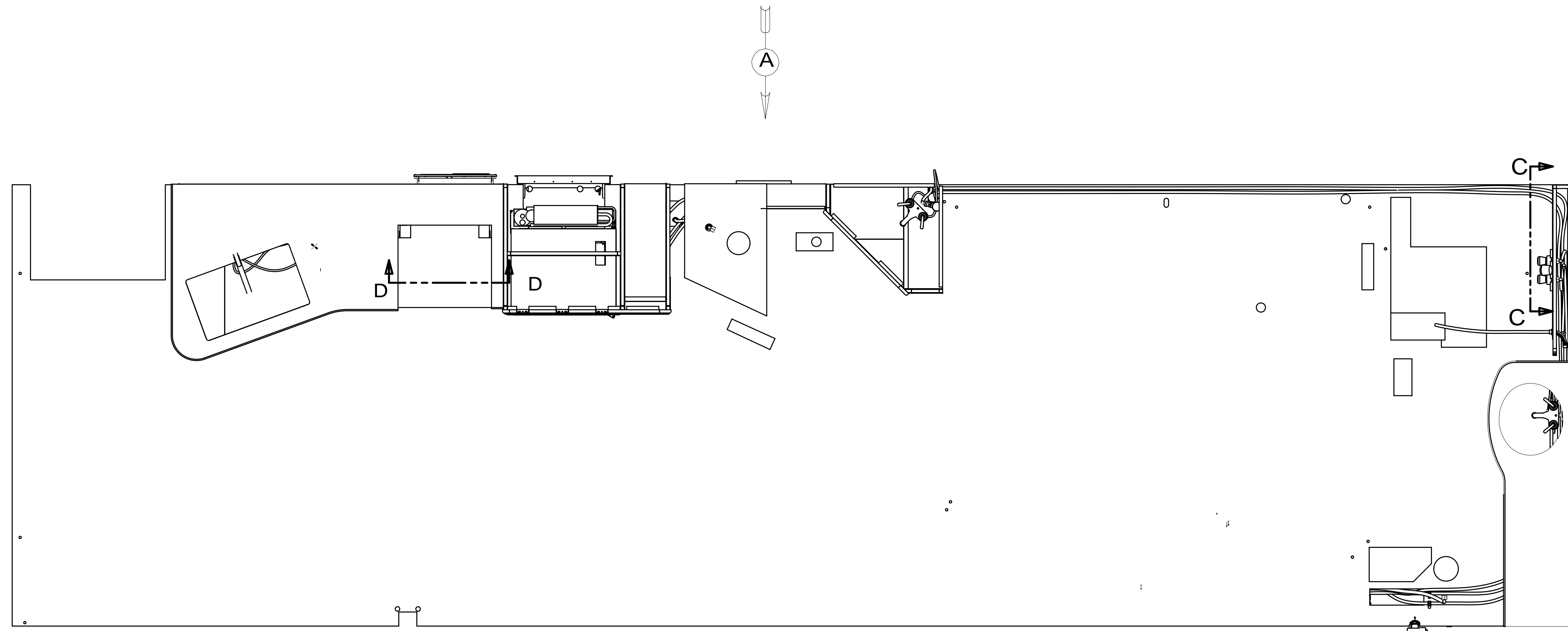


VIEW H

VIEW G

FIRST USED	14 E35F	
TITLE:	DO NOT SCALE DRAWING	
SHEET 4	PART NO 184812	REV
		01-Apr-2014

\*184812 \*A

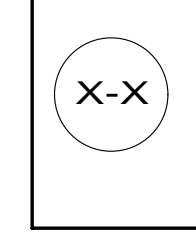


- 9. ALL CRIMP FITTINGS TO 3/4" PEX TUBING REQUIRE 3/4" CLAMP 140171-05-000.
- 8. ALL CRIMP FITTINGS TO 1/2" PEX TUBING REQUIRE 1/2" CLAMP 140171-03-000.
- 7. ALL CRIMP FITTINGS TO 5/8" FLEX TUBING REQUIRE 5/8" CLAMP 140171-04-000.
- 6 LABEL HOT AND COLD SUPPLY TUBES AND TAPE FITTING TO TUBE BEFORE CABINET SET TO PREVENT MOVEMENT.
- 5 ADD PIPE WRAP (LADDER SCRAP 110157-02-000) INSULATION.
- 4 ADD TEFLON TAPE 010405-02-000.
- 3. ALL TUBING TO BE SECURED AT 1200 INTERVALS MAXIMUM WITH CLAMP 010495-01-000 AND SCREW 000G67-10-12U OR EQUIVALENT.
- 2. TUBING TO BE INSTALLED WITH SUFFICIENT SLOPE TO PROVIDE DRAINAGE TO NEAREST VALVE.
- 1. PLASTIC FITTINGS TO BE SEALED WITH SEALANT 084456-01-000.

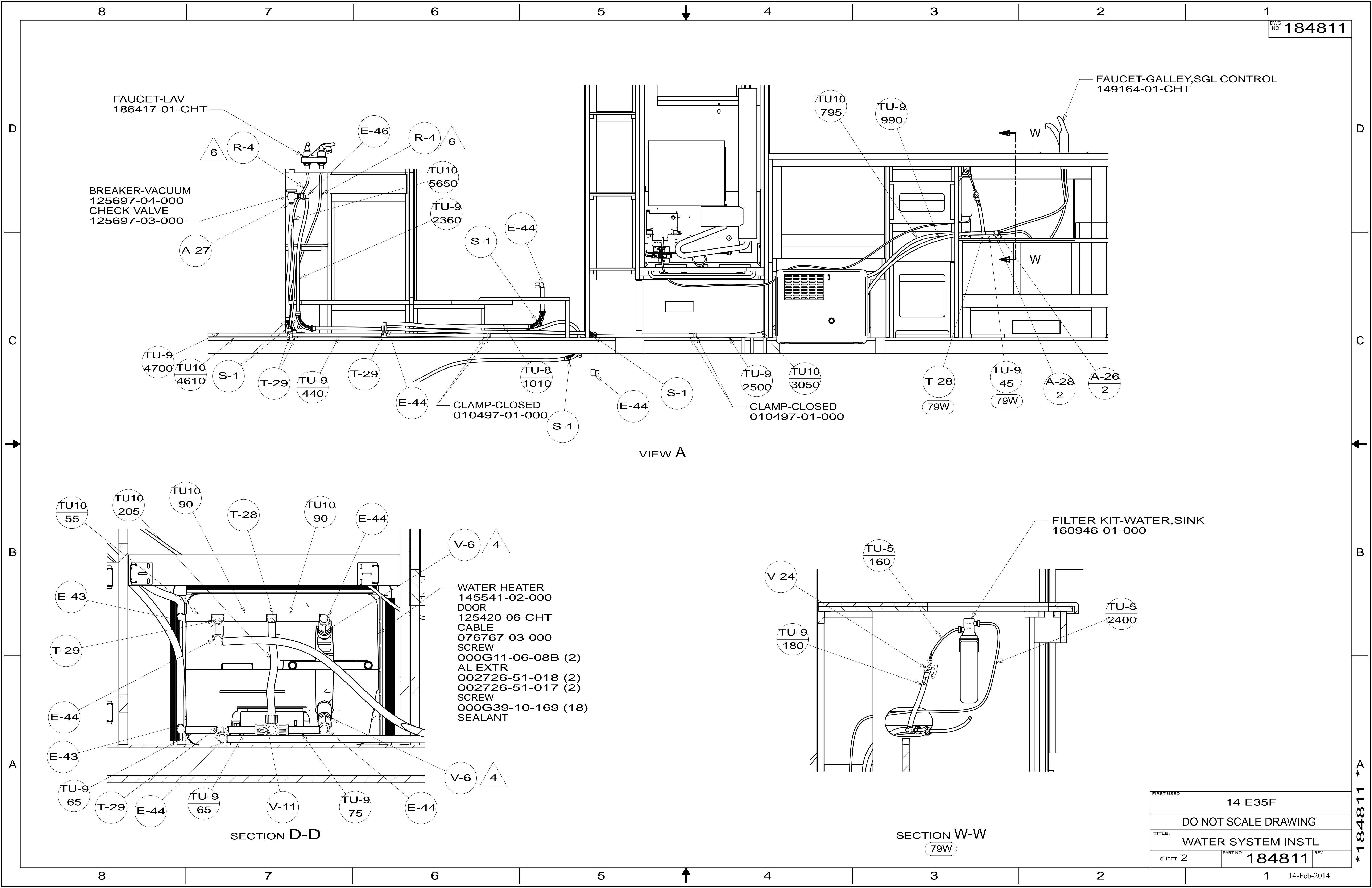
144 REFRIGERATOR-DOUBLE DOOR  
 79W REFRIGERATOR-4 DOOR

		COPYRIGHT 2014 WINNEBAGO INDUSTRIES, INC.	
DFTR	ORIG. DATE		
CHKR	ALL DIMENSIONS ARE IN MILLIMETERS		
P.E.			
M.E.	FIRST USED		
DSNR	14 E35F		
UNSPECIFIED TOLERANCES ARE:		MATERIAL:	
WHOLE DIM (X)	: 3		
ONE-PLACE (X.X)	: 1.5		
TWO-PLACE (X.XX)	: 0.50		
ANGLE	: 1°		
THIRD ANGLE PROJECTION			
DO NOT SCALE DRAWING		REFER TO ES0018 FOR FASTENER TIGHTENING GUIDELINES	
TITLE: WATER SYSTEM INSTL			
SHEET 1 OF 5	PART NO	184811	REV
REF:	1	14-Feb-2014	

FOR  
WATER  
CALLOUTS  
SEE DWG NO  
116230-01-000



\* 184811 \* A



FAUCET-LAV  
186417-01-CHT

BREAKER-VACUUM  
125697-04-000  
CHECK VALVE  
125697-03-000

FAUCET-GALLEY, SGL CONTROL  
149164-01-CHT

VIEW A

CLAMP-CLOSED  
010497-01-000

FILTER KIT-WATER, SINK  
160946-01-000

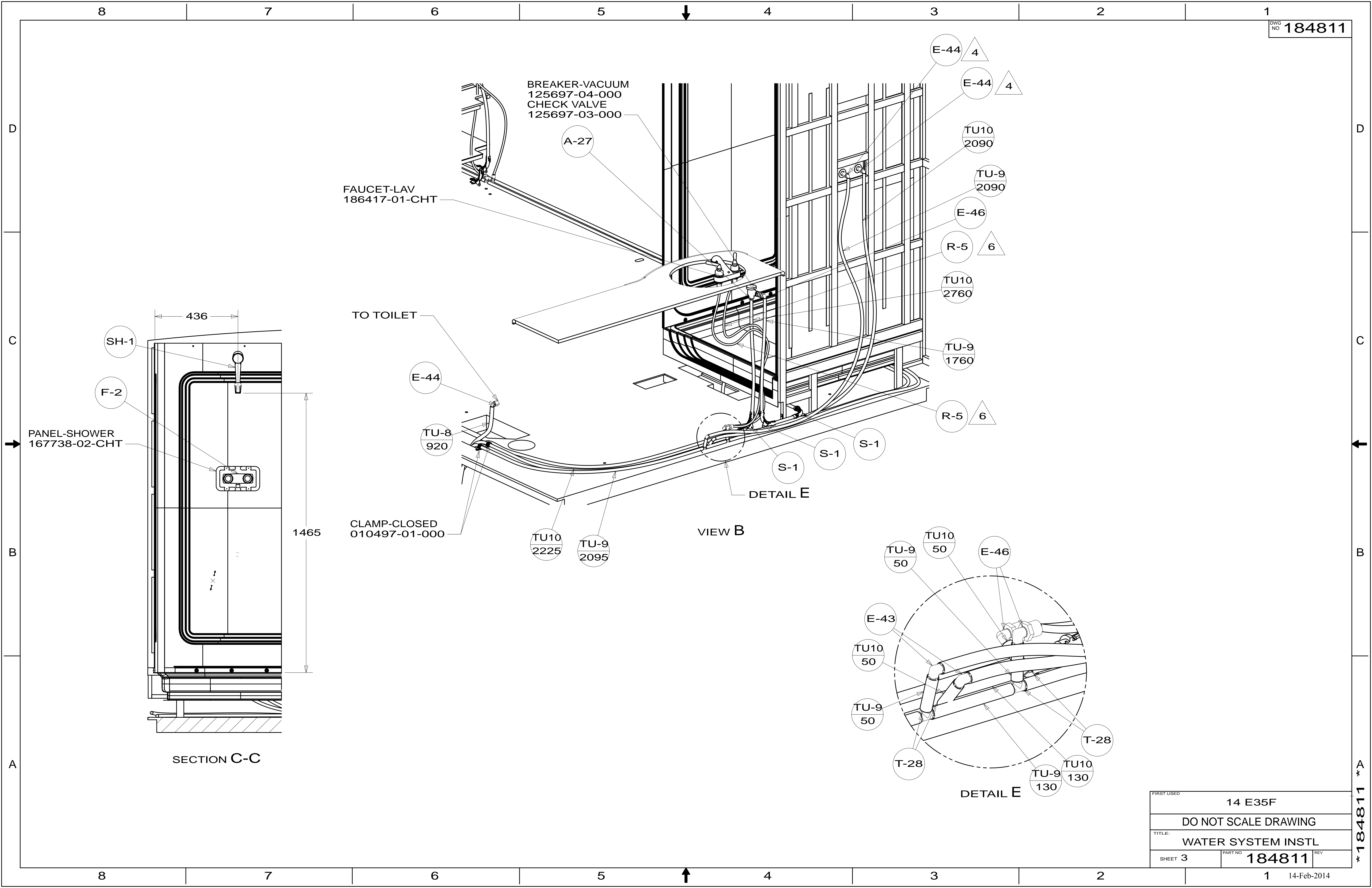
WATER HEATER  
145541-02-000  
DOOR  
125420-06-CHT  
CABLE  
076767-03-000  
SCREW  
000G11-06-08B (2)  
AL EXTR  
002726-51-018 (2)  
002726-51-017 (2)  
SCREW  
000G39-10-169 (18)  
SEALANT

SECTION D-D

SECTION W-W  
79W

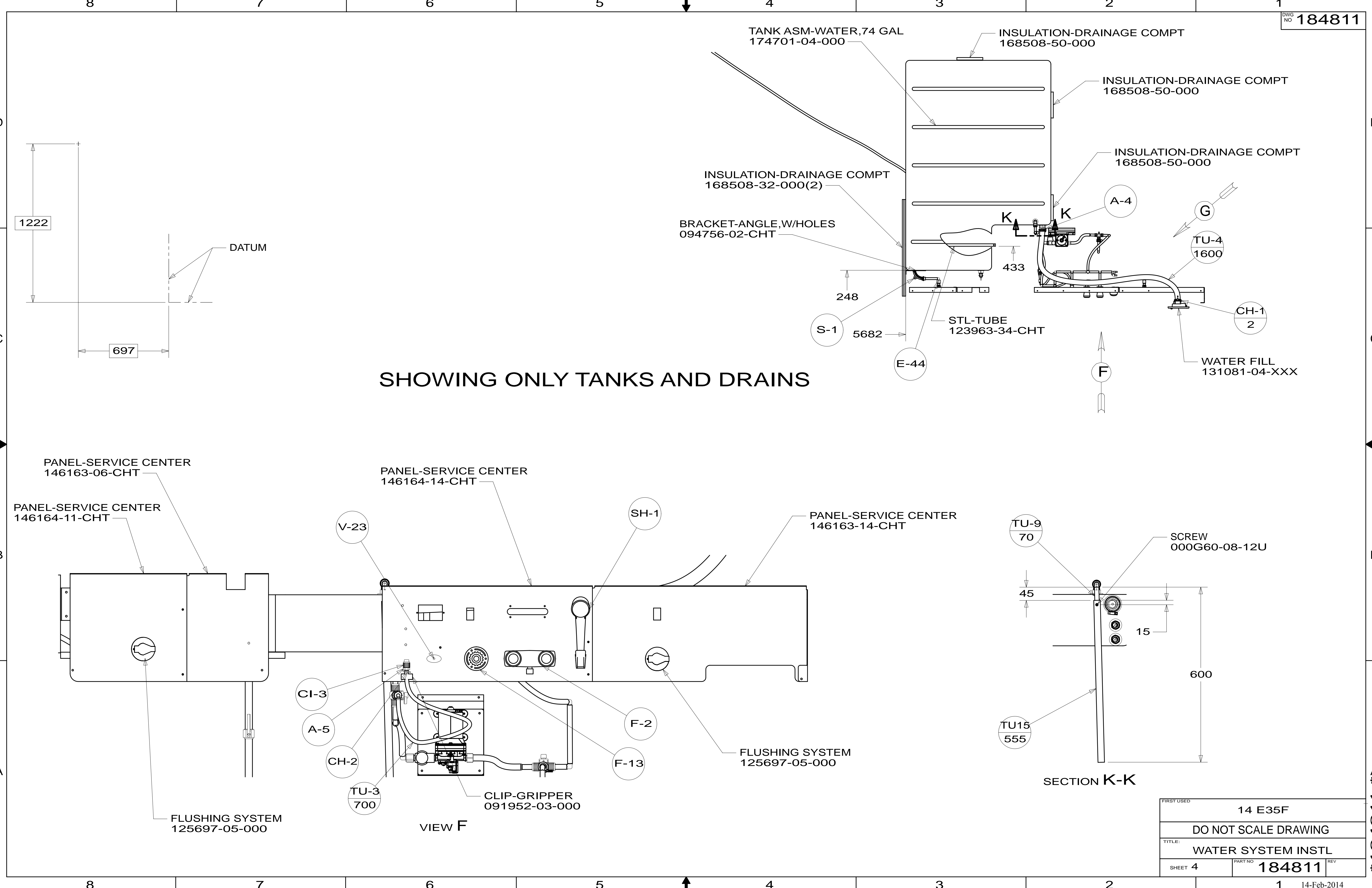
FIRST USED	14 E35F	
TITLE:	DO NOT SCALE DRAWING	
SHEET 2	PART NO	184811
	REV	
14-Feb-2014		

\*184811 \*A



FIRST USED	14 E35F	
TITLE:	DO NOT SCALE DRAWING	
TITLE:	WATER SYSTEM INSTL	
SHEET 3	PART NO 184811	REV
	1	14-Feb-2014

\*184811 \*A



SHOWING ONLY TANKS AND DRAINS

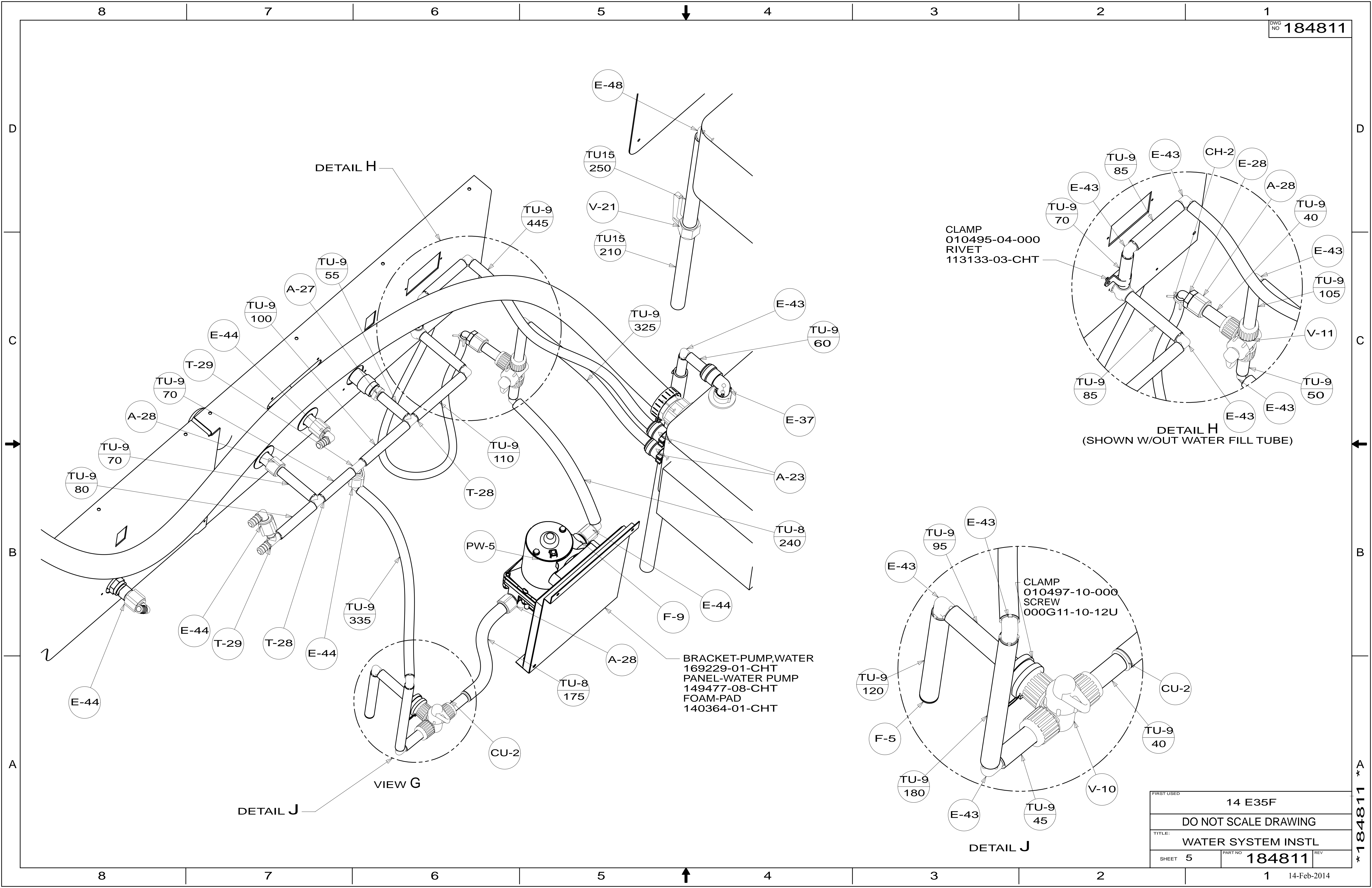
VIEW F

SECTION K-K

FIRST USED	14 E35F	
TITLE:	DO NOT SCALE DRAWING	
	WATER SYSTEM INSTL	
SHEET 4	PART NO 184811	REV
		14-Feb-2014

\*184811 \*A





DETAIL H

CLAMP  
010495-04-000  
RIVET  
113133-03-CHT

DETAIL H  
(SHOWN W/OUT WATER FILL TUBE)

CLAMP  
010497-10-000  
SCREW  
000G11-10-12U

DETAIL J

BRACKET-PUMP,WATER  
169229-01-CHT  
PANEL-WATER PUMP  
149477-08-CHT  
FOAM-PAD  
140364-01-CHT

VIEW G

DETAIL J

FIRST USED	14 E35F		
TITLE:	DO NOT SCALE DRAWING		
TITLE:	WATER SYSTEM INSTL		
SHEET 5	PART NO	184811	REV
			14-Feb-2014

\*184811 \*A