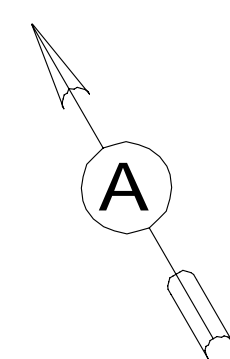
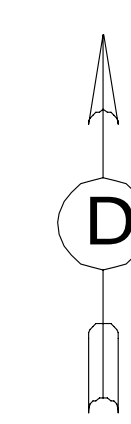
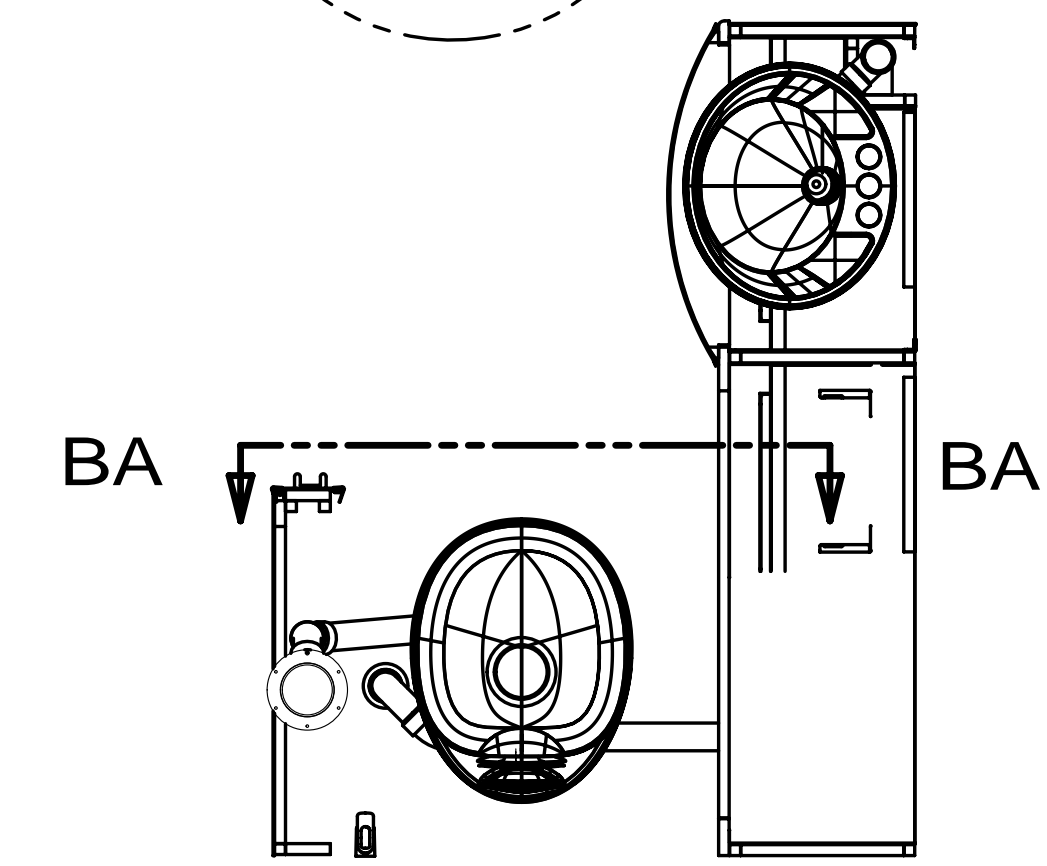
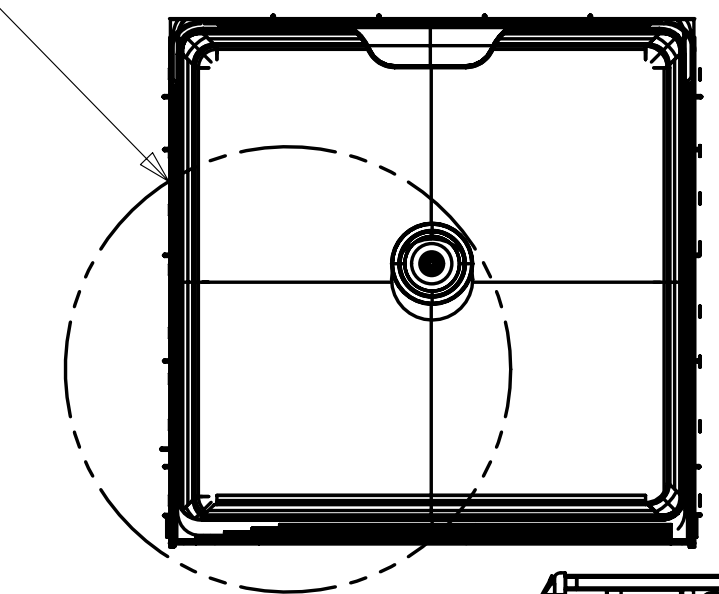


DETAIL C



FRONT OF COACH

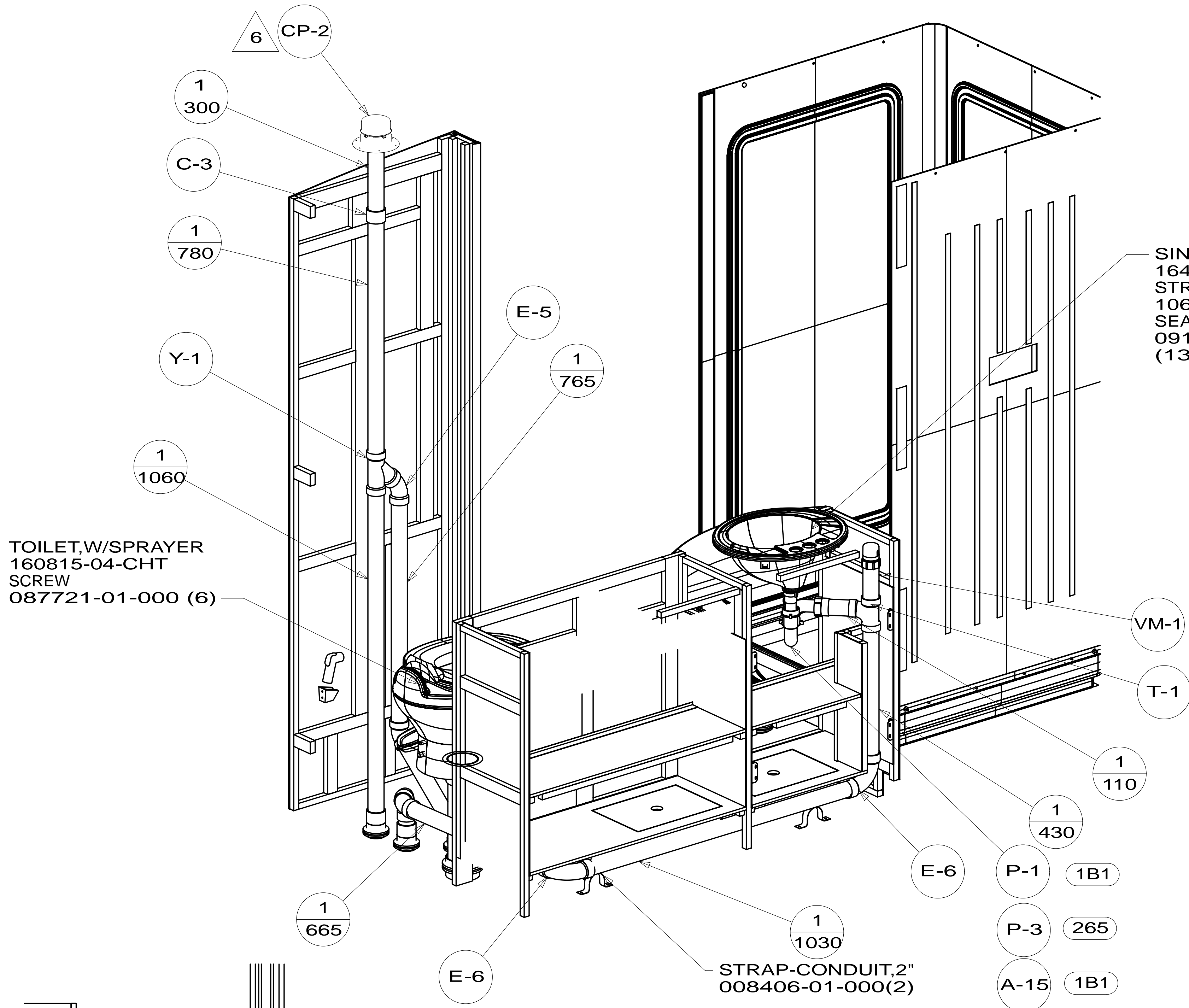
- NOTES:
1. SLOPE OF HORIZONTAL PIPING TO BE MINIMUM OF 3 PER 305 mm.
 2. SLOPE OF TRAP ARM MUST BE 6 PER 305 mm.
 3. ALL PIPE AND FITTINGS TO BE ASSEMBLED WITH SOLVENT 004020-01-000 (USA), 004020-02-000 (CAN)
 4. USE SMOOTH PLUMBERS PUTTY 167459-01-000 TO SEAL STRAINER (0.2 PER STRAINER).
 5. SEAL AROUND SHOWER WITH SILICONE.
 6. VENT PIPE MUST PROJECT 51 MIN AND 64 MAX ABOVE ROOF FOR PROPER FIT AND FUNCTION. ADD S-1 (116666-01-CHT SEAL-VENT PIPE) AROUND PIPE ON ROOF BEFORE VENT CAP IS INSTALLED.
 7. SECURE VENT PIPE TO TANK WITH CLAMP 062401-02-000.
 8. SECURE DRAINAGE PIPES TO CABINET USING WIRE TIE 108046-02-000, AND SCREW 000G67-10-12U AT INTERVALS OF NOT OF NOT MORE THAN 4 FEET APART.
 9. SEE DRAWING 061607 FOR INSTALLATION OF GROMMETS.

265 CODES/STDS-CSA/CMVSS
1B1 CODES/STANDARDS-USA

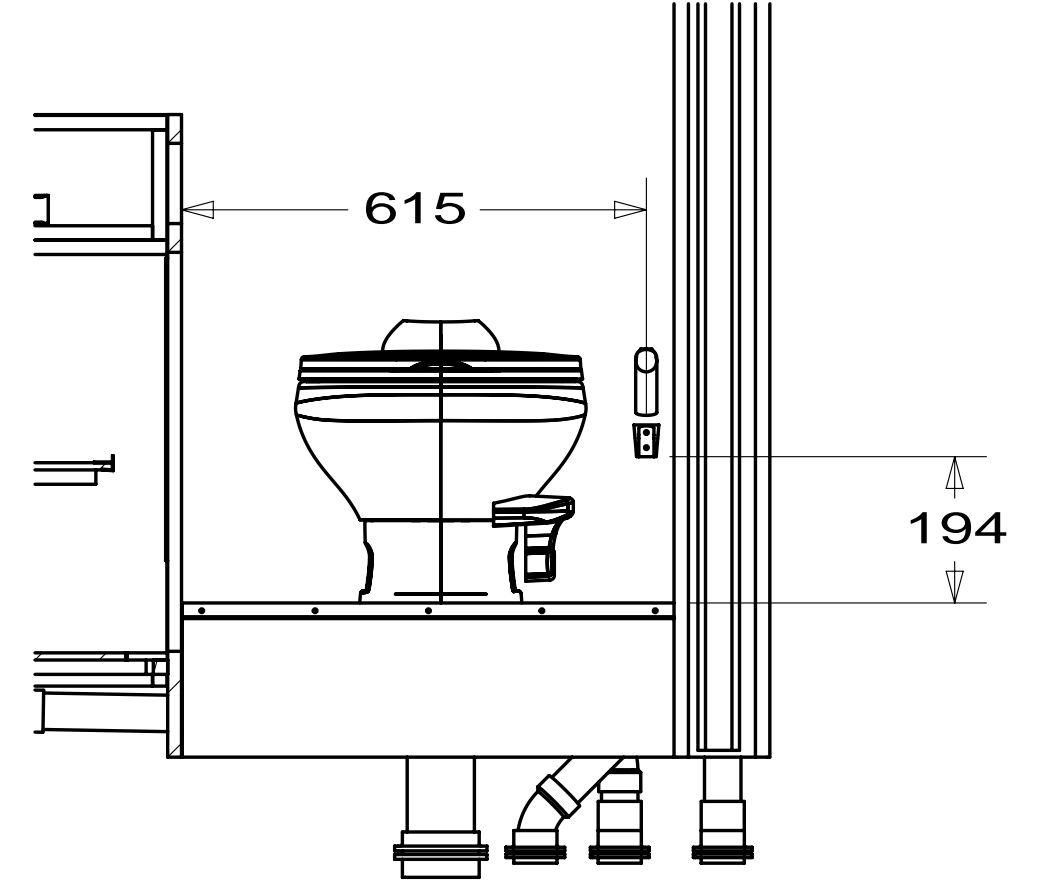
		COPYRIGHT 2014 WINNEBAGO INDUSTRIES, INC.	
DFT-ORIG	ORIG. DATE	ALL DIMENSIONS ARE IN MILLIMETERS	
CHKR			
P.E.			
M.E.	FIRST USED		
DSNR		14 E35B	
UNSPECIFIED TOLERANCES ARE: WHOLE DIM (X) : 3 ONE-PLACE (X.X) : TWO-PLACE (X.XX) : ANGLE :		MATERIAL:	
THIRD ANGLE PROJECTION		REFER TO ES0018 FOR FASTENER TIGHTENING GUIDELINES	
DO NOT SCALE DRAWING			
TITLE: DRAINAGE SYSTEM INSTL			
SHEET 1 OF 4		PART NO 183610	
REF:		1 27-Mar-2014	

FOR DRAINAGE CALLOUTS SEE DWG NO 116229-01-000

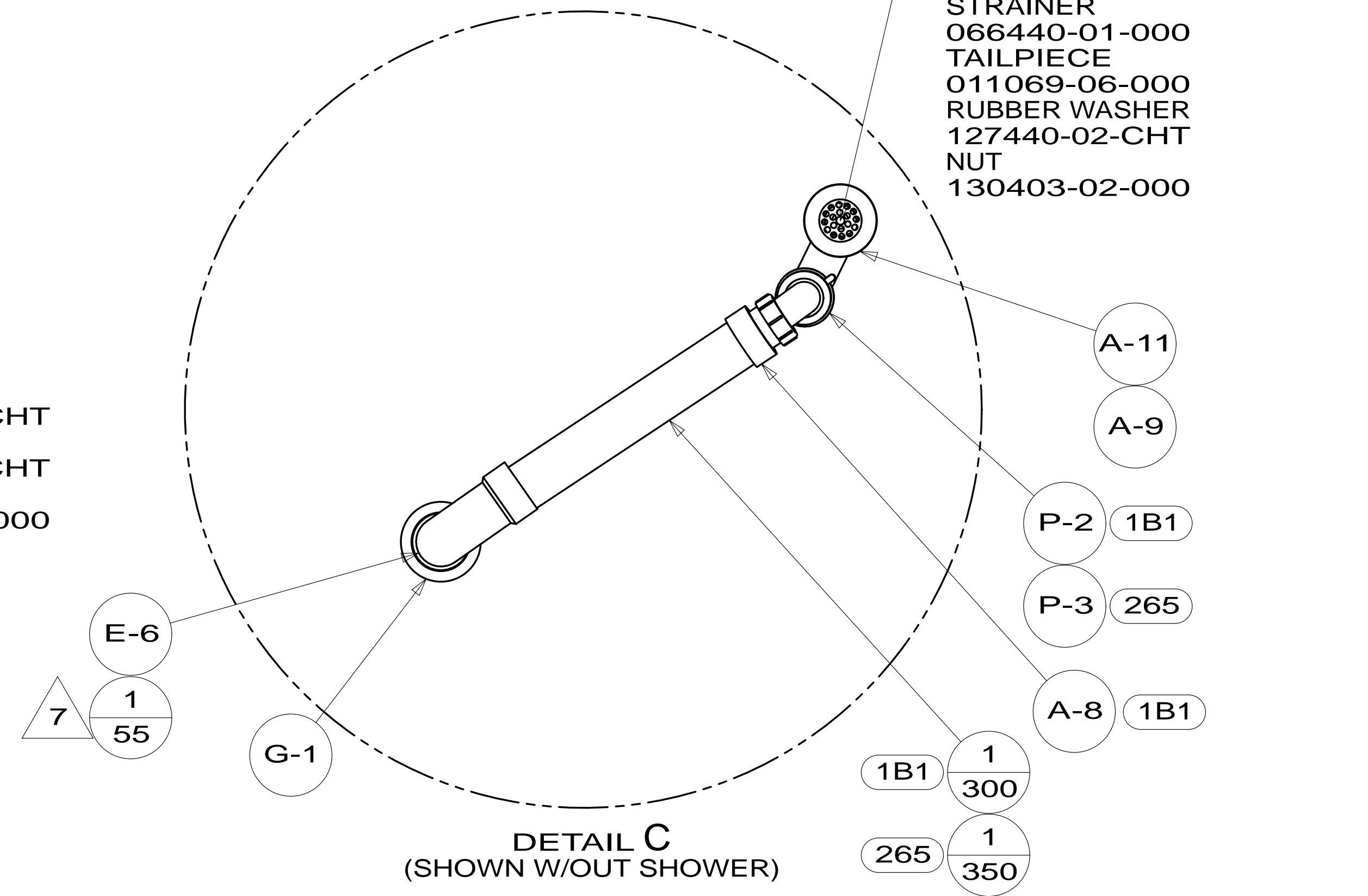
* 183610 * A



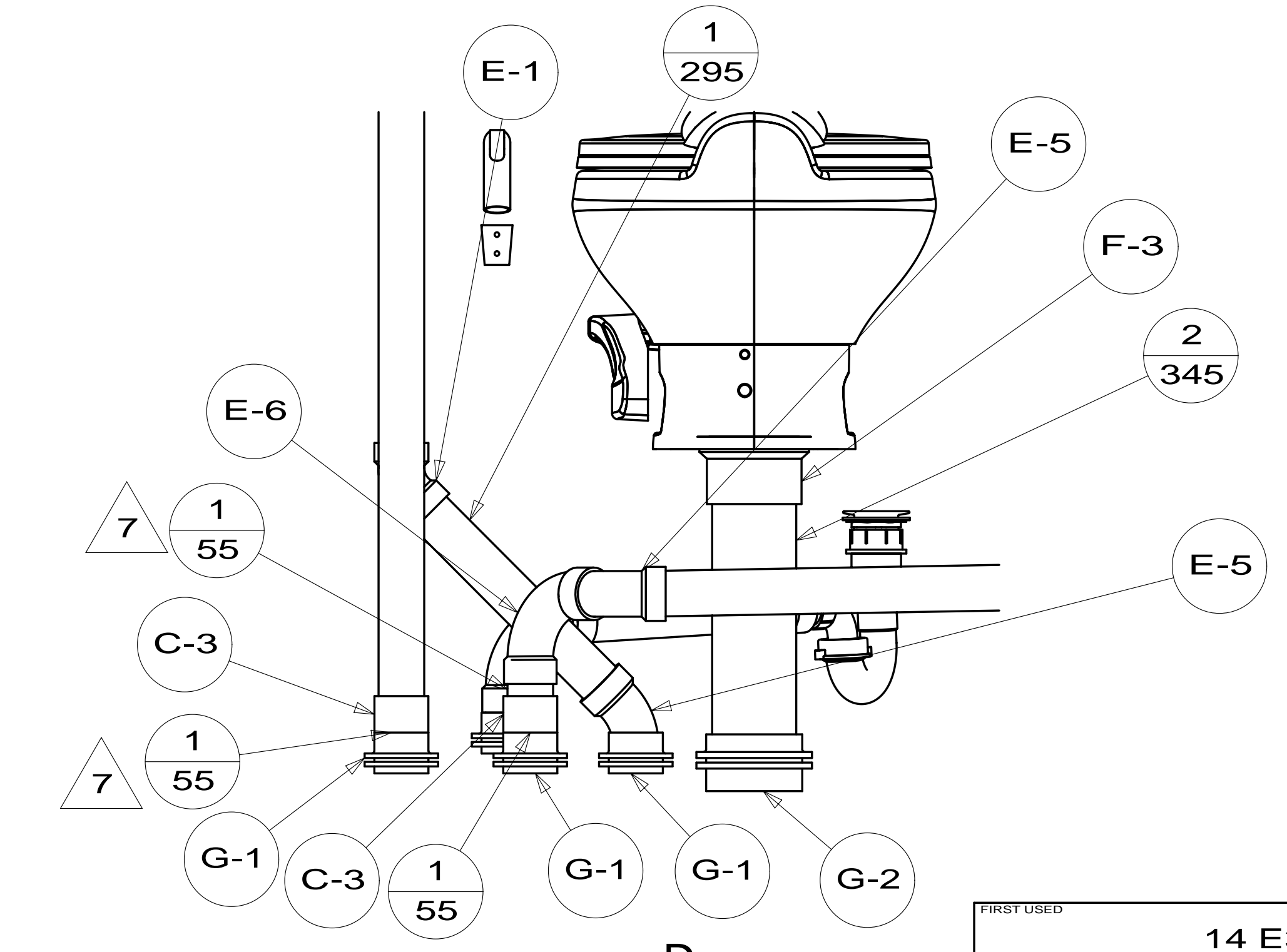
VIEW A



SECTION BA-BA



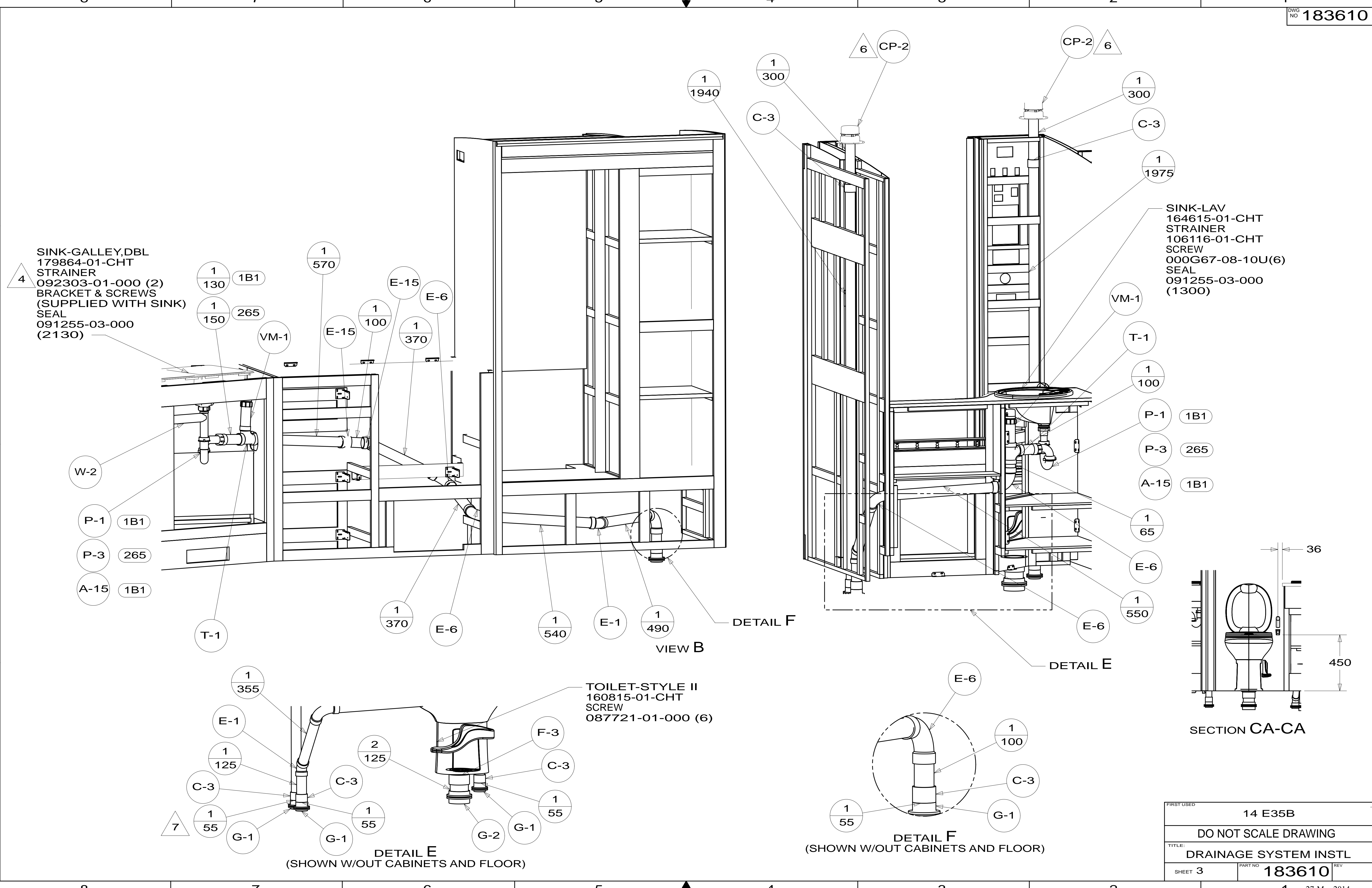
DETAIL C (SHOWN W/OUT SHOWER)



VIEW D (SHOWN W/OUT CABINETS AND FLOOR)

FIRST USED	14 E35B
TITLE:	DO NOT SCALE DRAWING
SHEET 2	PART NO 183610 REV
	27-Mar-2014

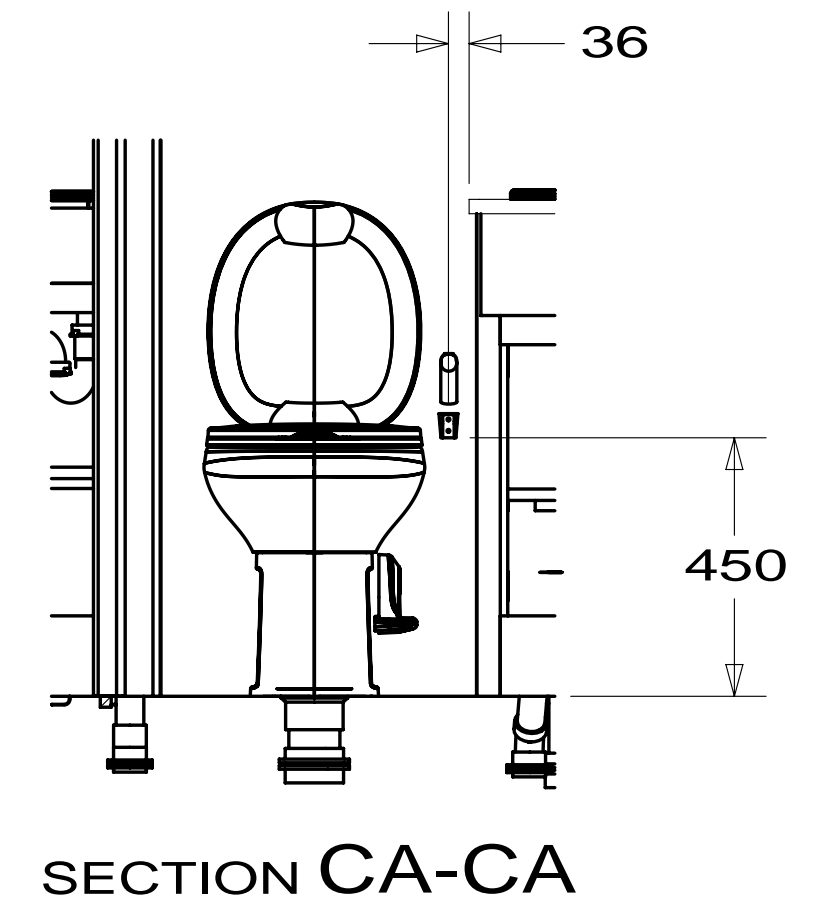
* 183610 * A



SINK-GALLEY, DBL
179864-01-CHT
STRAINER
092303-01-000 (2)
BRACKET & SCREWS
(SUPPLIED WITH SINK)
SEAL
091255-03-000
(2130)

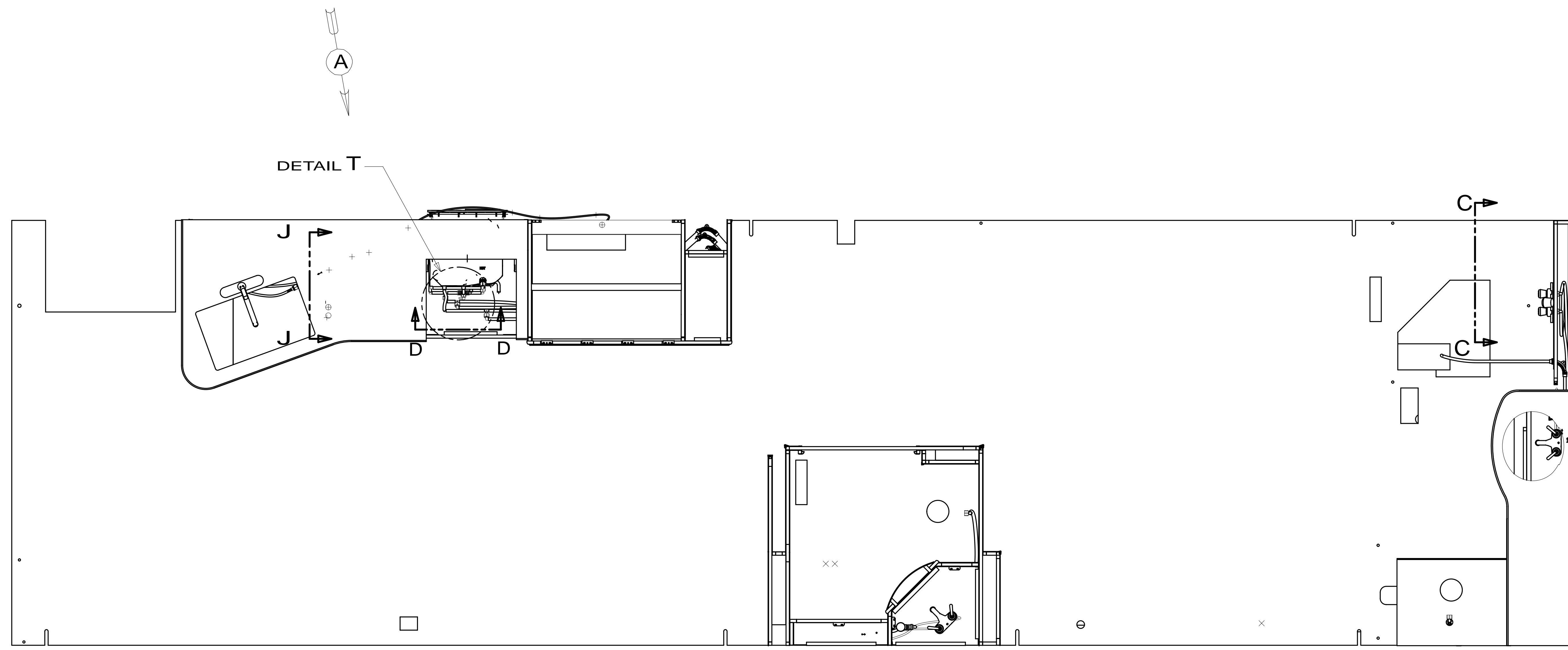
SINK-LAV
164615-01-CHT
STRAINER
106116-01-CHT
SCREW
000G67-08-10U(6)
SEAL
091255-03-000
(1300)

TOILET-STYLE II
160815-01-CHT
SCREW
087721-01-000 (6)



FIRST USED	14 E35B	
DO NOT SCALE DRAWING		
TITLE: DRAINAGE SYSTEM INSTL		
SHEET 3	PART NO 183610	REV
		27-Mar-2014

* 183610 * A



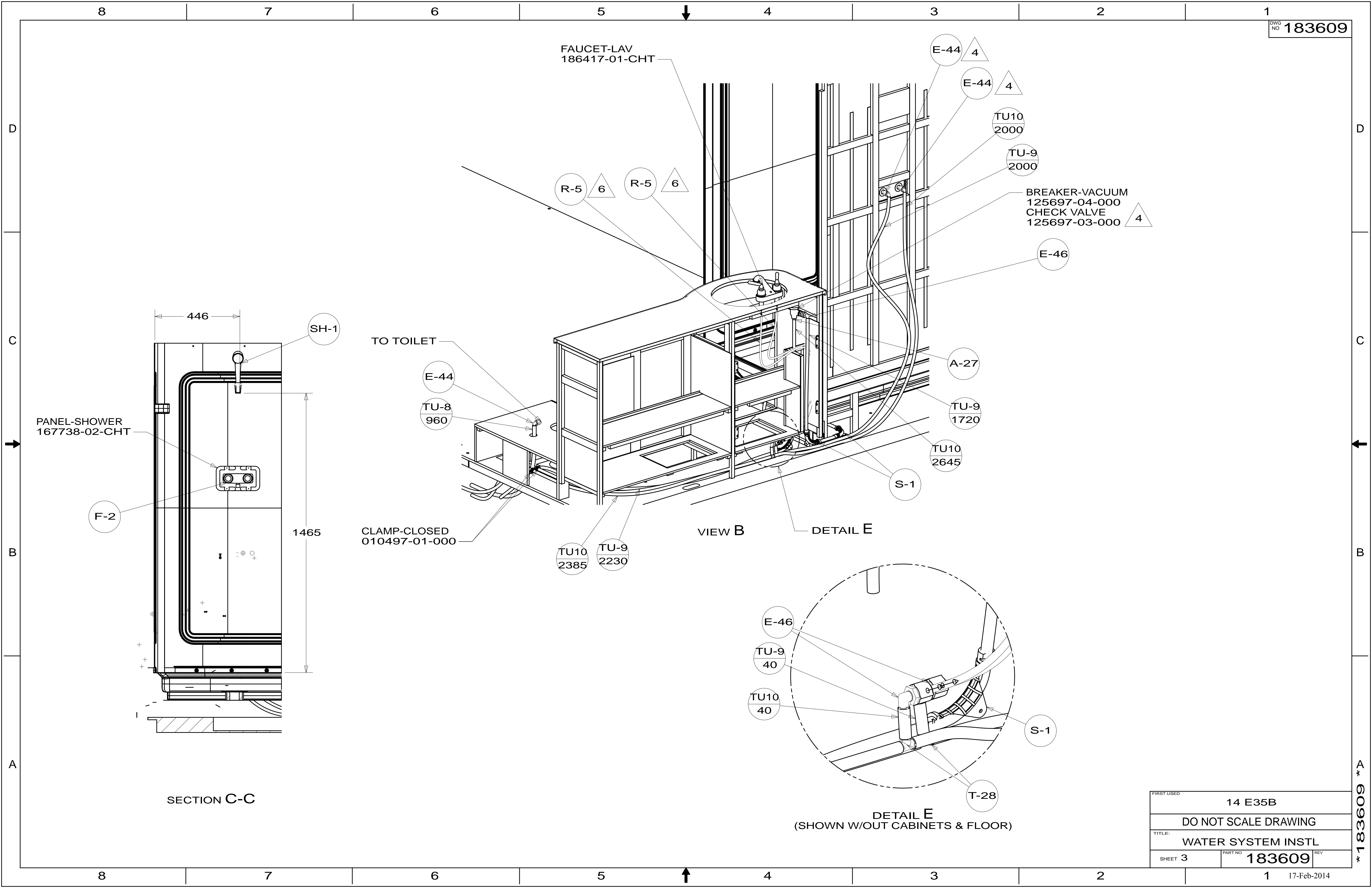
- NOTES:
9. FLUSHING SYSTEM REQUIRES 125697-06-000 INSTRUCTION SHEET.
 8. ALL CRIMP FITTINGS TO PEX TUBING REQUIRE 1/2" CLAMP 140171-03-000.
 7. ALL CRIMP FITTINGS TO PEX TUBING REQUIRE 5/8" CLAMP 140171-04-000.
 - 6 LABEL HOT AND COLD SUPPLY TUBES AND TAPE FITTING TO TUBE BEFORE CABINET SET TO PREVENT MOVEMENT.
 - 5 ADD PIPE WRAP (LADDER SCRAP 110157-02-000) INSULATION.
 - 4 ADD TEFLON TAPE 010405-02-000.
 3. ALL TUBING TO BE SECURED AT 1200 INTERVALS MAXIMUM WITH CLAMP 010495-01-000 AND SCREW 000G67-10-12U OR EQUIVALENT.
 2. TUBING TO BE INSTALLED WITH SUFFICIENT SLOPE TO PROVIDE DRAINAGE TO NEAREST VALVE.
 1. PLASTIC FITTINGS TO BE SEALED WITH SEALANT 084456-01-000.

79W REFRIGERATOR-4 DOOR
 144 REFRIGERATOR-DOUBLE DOOR

		COPYRIGHT 2014 WINNEBAGO INDUSTRIES, INC.	
DFT-ORIG	ORIG. DATE	ALL DIMENSIONS ARE IN MILLIMETERS	
CHKR			
P.E.			
M.E.	FIRST USED		
DSNR		14 E35B	
UNSPECIFIED TOLERANCES ARE:		MATERIAL:	
WHOLE DIM (X)	: 3		
ONE-PLACE (X.X)	: 1.5		
TWO-PLACE (X.XX)	: 0.50		
ANGLE	: 1°		
THIRD ANGLE PROJECTION			
DO NOT SCALE DRAWING		REFER TO ES0018 FOR FASTENER TIGHTENING GUIDELINES	
TITLE: WATER SYSTEM INSTL			
SHEET 1 OF 5	PART NO	183609	REV
REF:	1	17-Feb-2014	

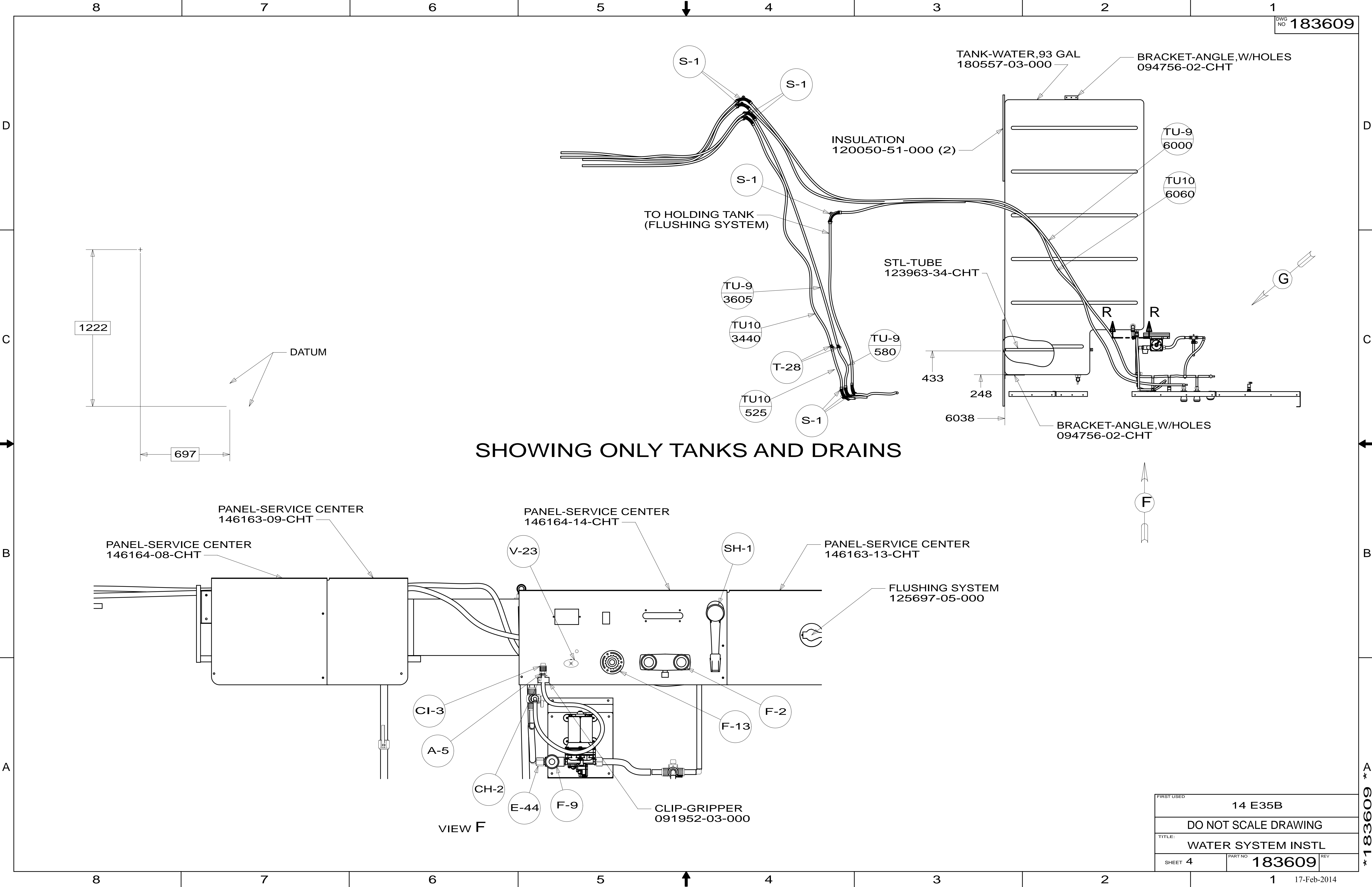
FOR WATER CALLOUTS SEE DWG NO 116230-01-000

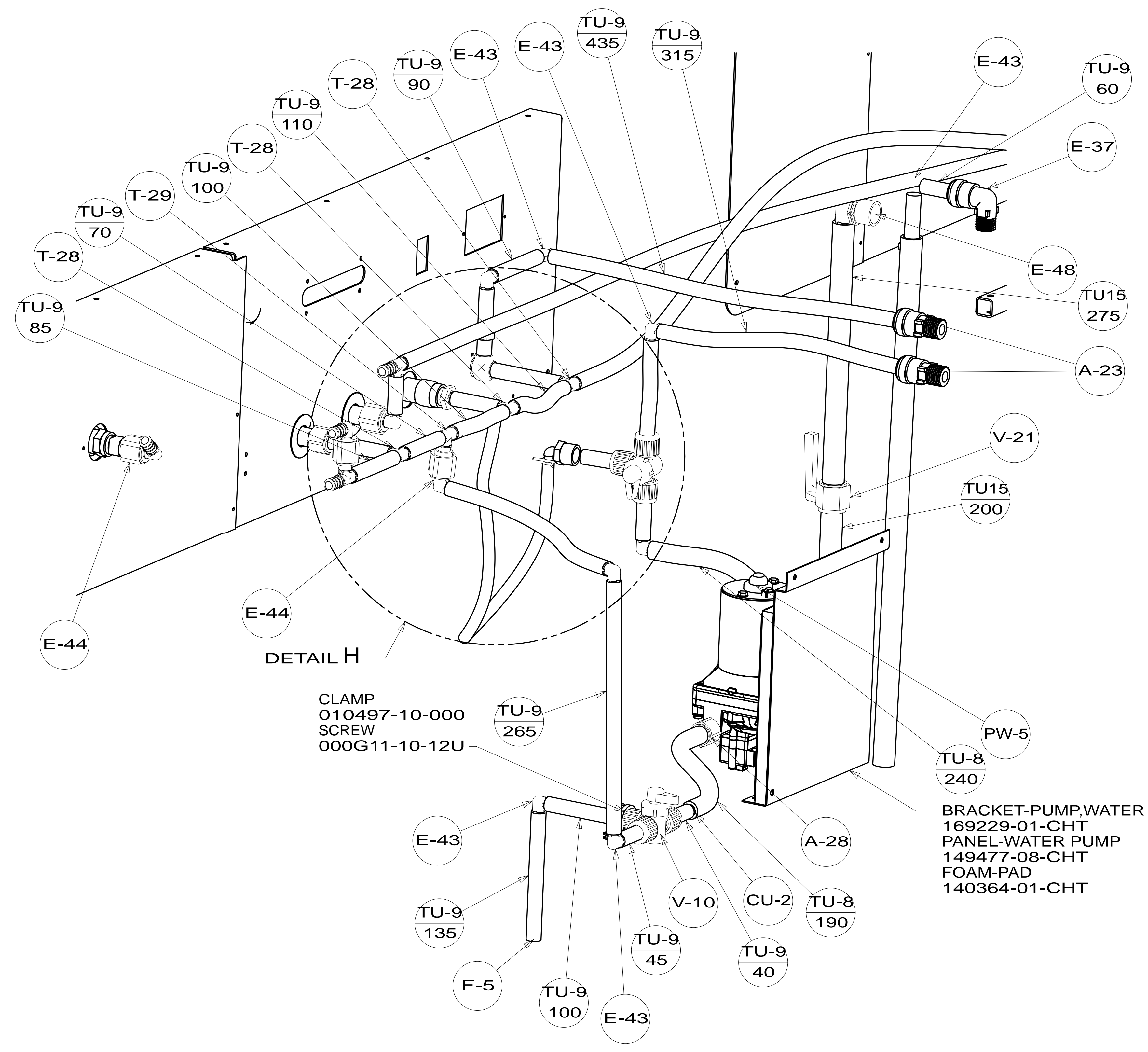
* 183609 *



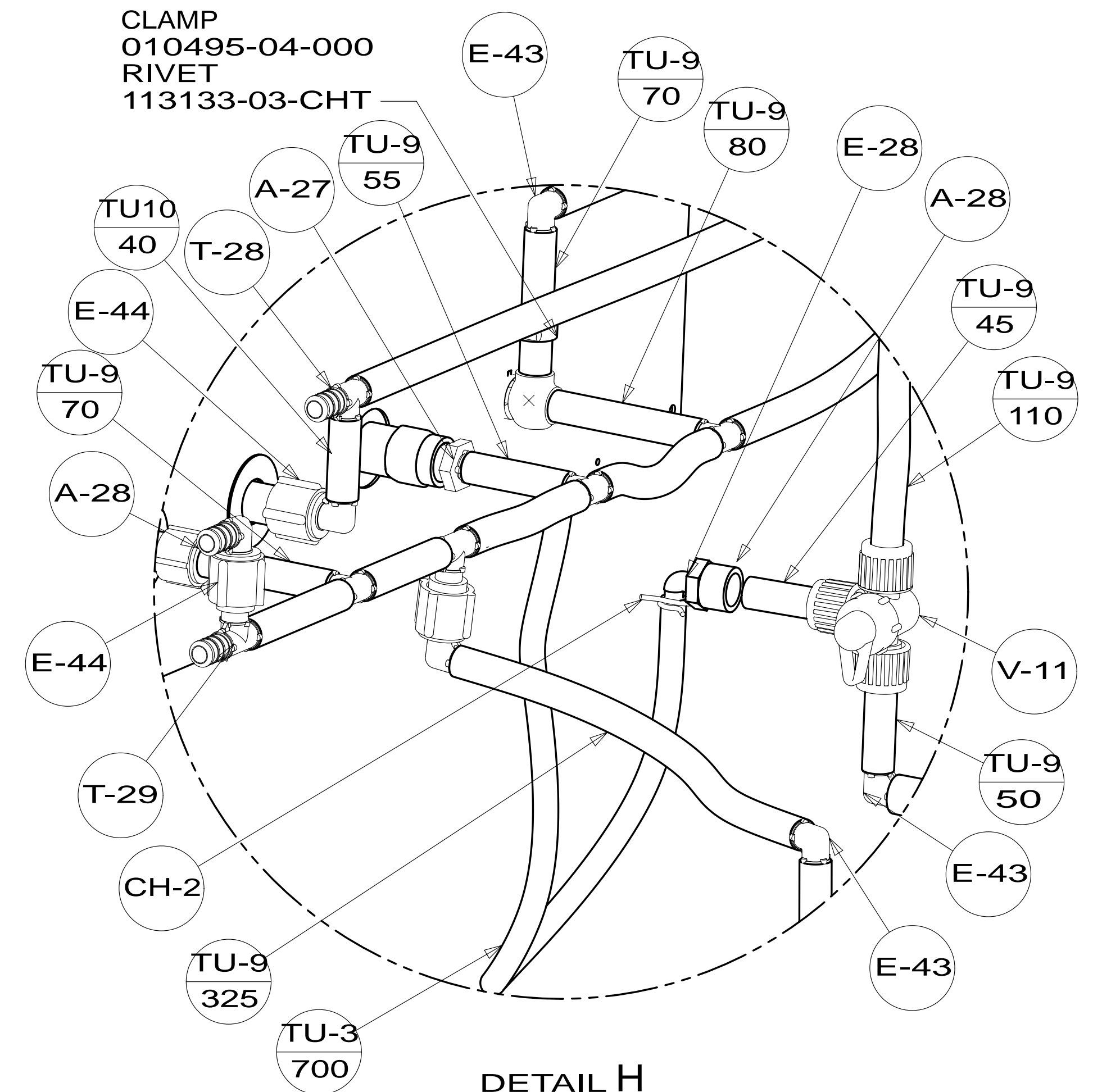
FIRST USED	14 E35B	
TITLE:	DO NOT SCALE DRAWING	
	WATER SYSTEM INSTL	
SHEET 3	PART NO 183609	REV
	1	17-Feb-2014

A * 183609

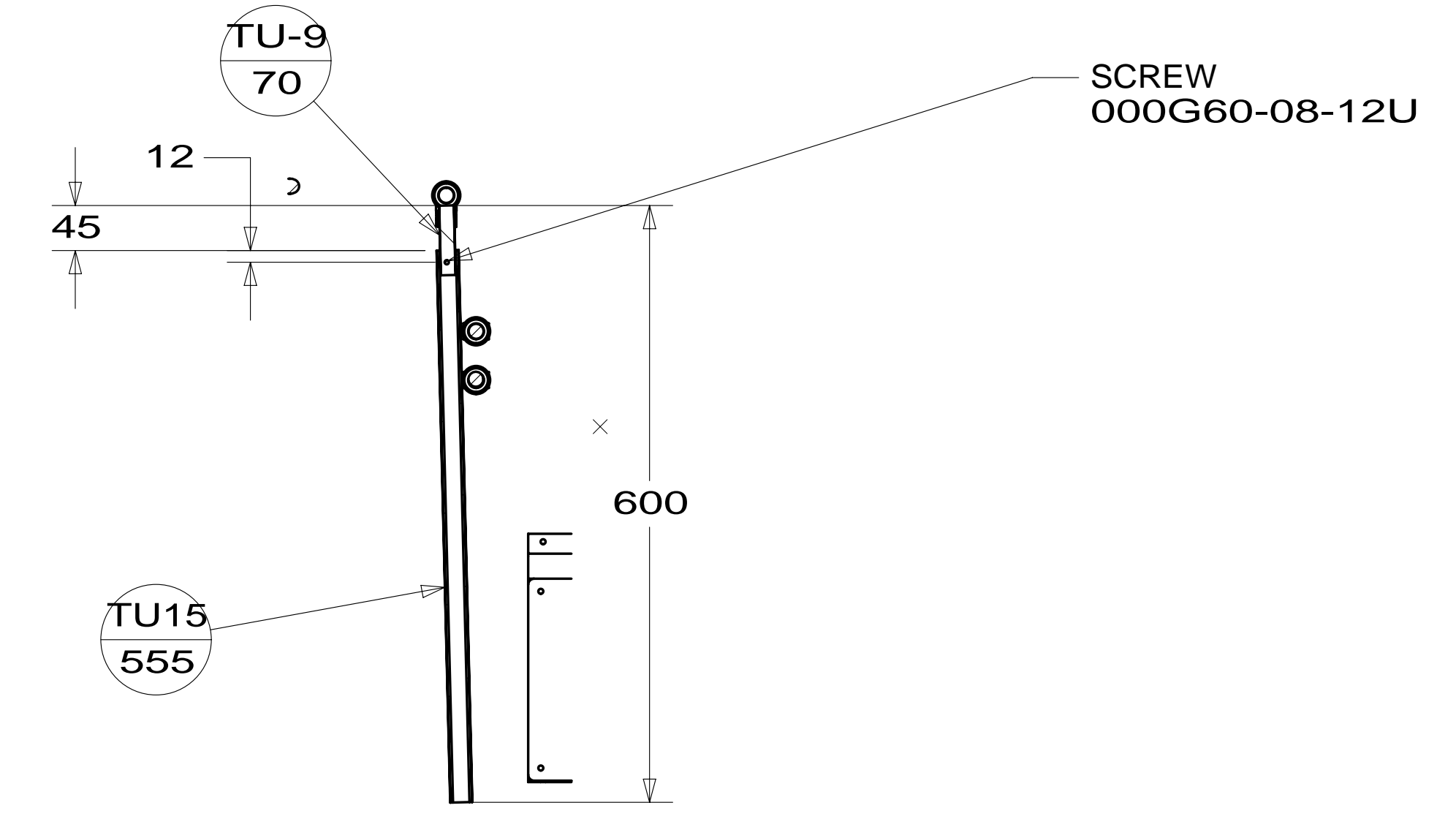




VIEW G
(SHOWN W/OUT TANK)



DETAIL H



SECTION R-R

FIRST USED	14 E35B		
TITLE:	DO NOT SCALE DRAWING		
TITLE:	WATER SYSTEM INSTL		
SHEET 5	PART NO	183609	REV
		1	17-Feb-2014

* 183609 A