

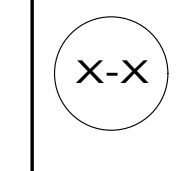
FRONT  
OF  
COACH

- NOTES:
1. SLOPE OF HORIZONTAL PIPING TO BE MINIMUM OF 3 PER 305 mm.
  2. SLOPE OF TRAP ARM MUST BE 6 PER 305 mm.
  3. ALL PIPE AND FITTINGS TO BE ASSEMBLED WITH SOLVENT 004020-01-000 (USA), 004020-02-000 (CAN)
  4. USE SMOOTH PLUMBERS PUTTY 167459-01-000 TO SEAL STRAINER (0.2 PER STRAINER).
  5. SEAL AROUND SHOWER WITH SILICONE.
  6. VENT PIPE MUST PROJECT 51 MIN AND 64 MAX ABOVE ROOF FOR PROPER FIT AND FUNCTION. ADD S-1 (116666-01-CHT SEAL-VENT PIPE) AROUND PIPE ON ROOF BEFORE VENT CAP IS INSTALLED.
  7. SECURE VENT PIPE TO FLOOR WITH CLAMP 062401-02-000 (2), SCREW 000G67-10-12U (2), BRACKET 136878-01-CHT (2).
  8. SECURE DRAINAGE PIPES TO CABINET USING WIRE TIE 108046-02-000, AND SCREW 000G67-10-12U AT INTERVALS OF NOT OF NOT MORE THAN 4 FEET APART.
  9. SEE DRAWING 061607 FOR INSTALLATION OF GROMMETS.

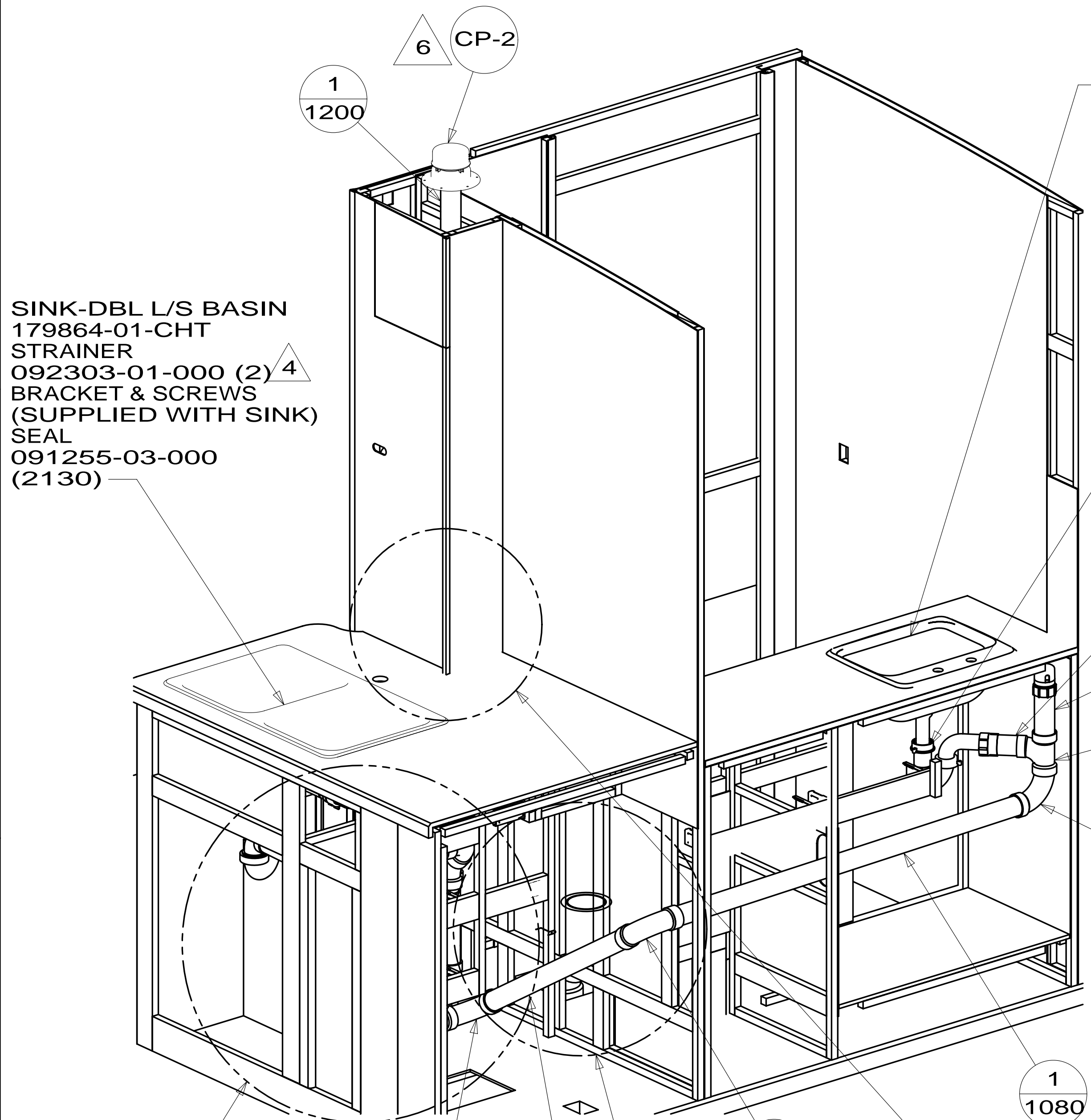
- 265 CODES/STDS-CSA/CMVSS
- 1B1 CODES/STANDARDS-USA

<b>WINNEBAGO</b>		COPYRIGHT 2014 WINNEBAGO INDUSTRIES, INC.	
DFTR	ORIG. DATE	ALL DIMENSIONS ARE IN MILLIMETERS	
CHKR			
P.E.			
M.E.	FIRST USED		
DSNR		14 E 30T	
UNSPECIFIED TOLERANCES ARE:		MATERIAL:	
WHOLE DIM (X)	: 3	REFER TO ES0018 FOR FASTENER TIGHTENING GUIDELINES	
ONE-PLACE (X.X)	:		
TWO-PLACE (X.XX)	:		
ANGLE	:		
THIRD ANGLE PROJECTION			
DO NOT SCALE DRAWING		TITLE: <b>DRAINAGE SYSTEM INSTL</b>	
SHEET 1 OF 4	PART NO <b>185997</b>	REV	
REF:	1	26-Mar-2014	

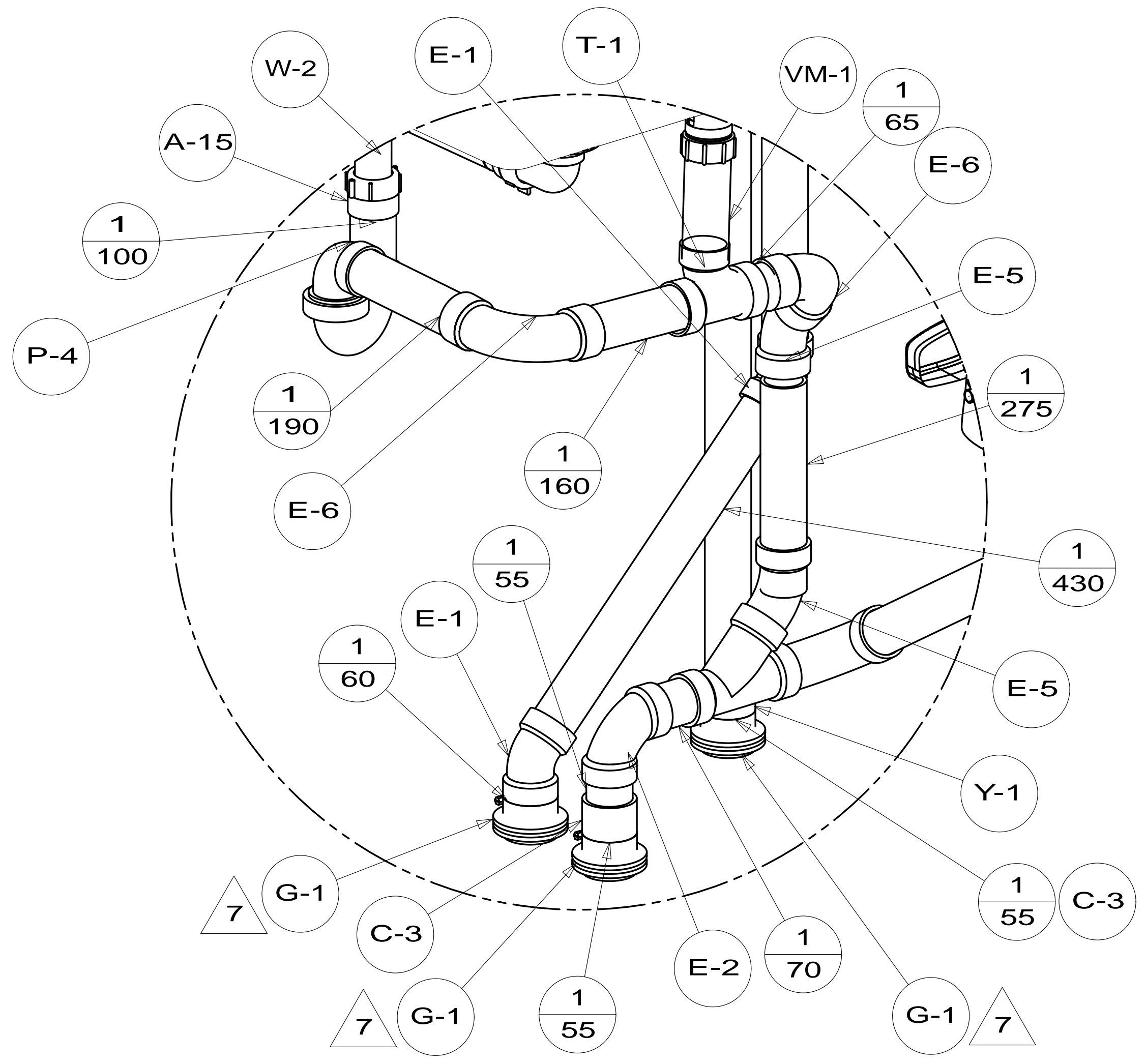
FOR  
DRAINAGE  
CALLOUTS  
SEE DWG NO  
116229-01-000



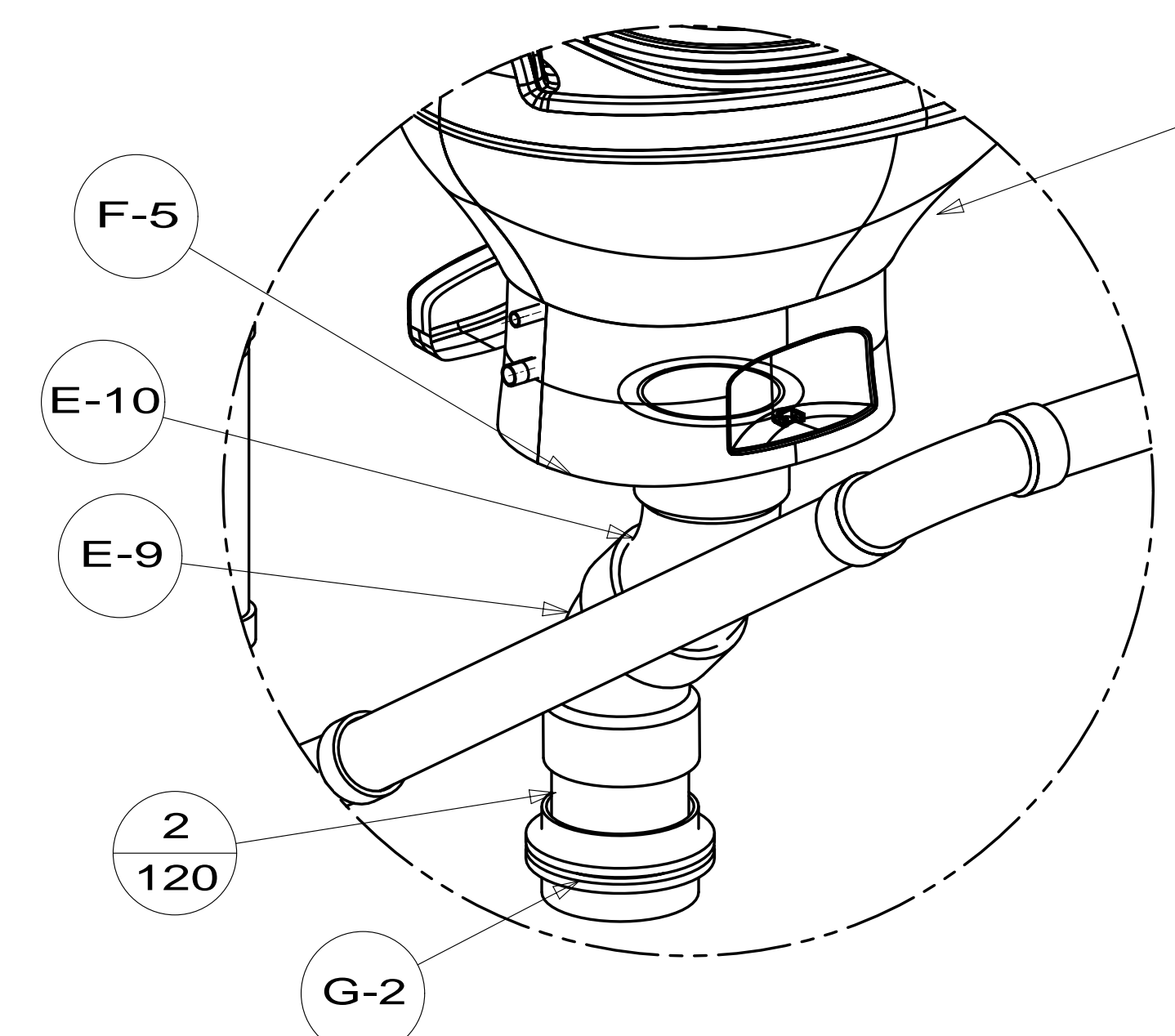
\* 185997 \*



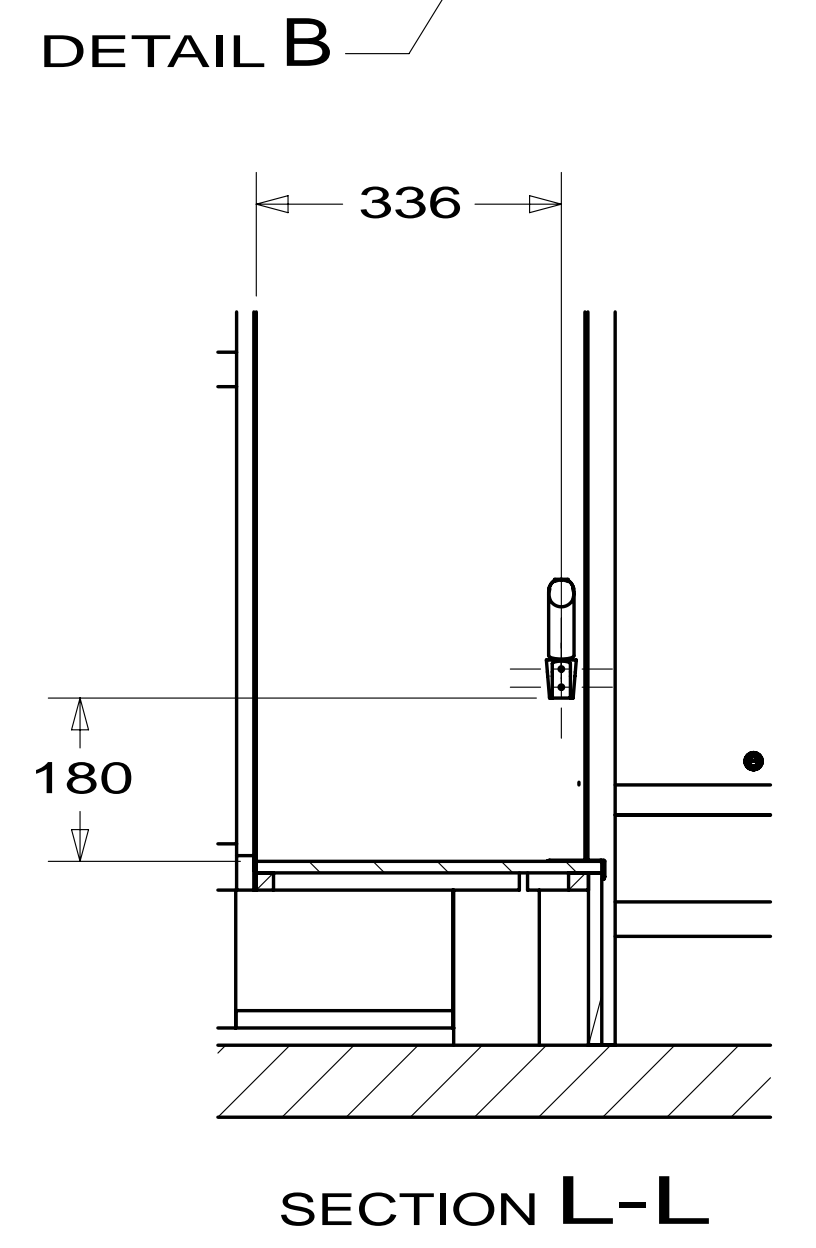
- P-1 1B1
- P-3 265
- A-15 1B1
- 1/80
- VM-1
- T-1
- E-3



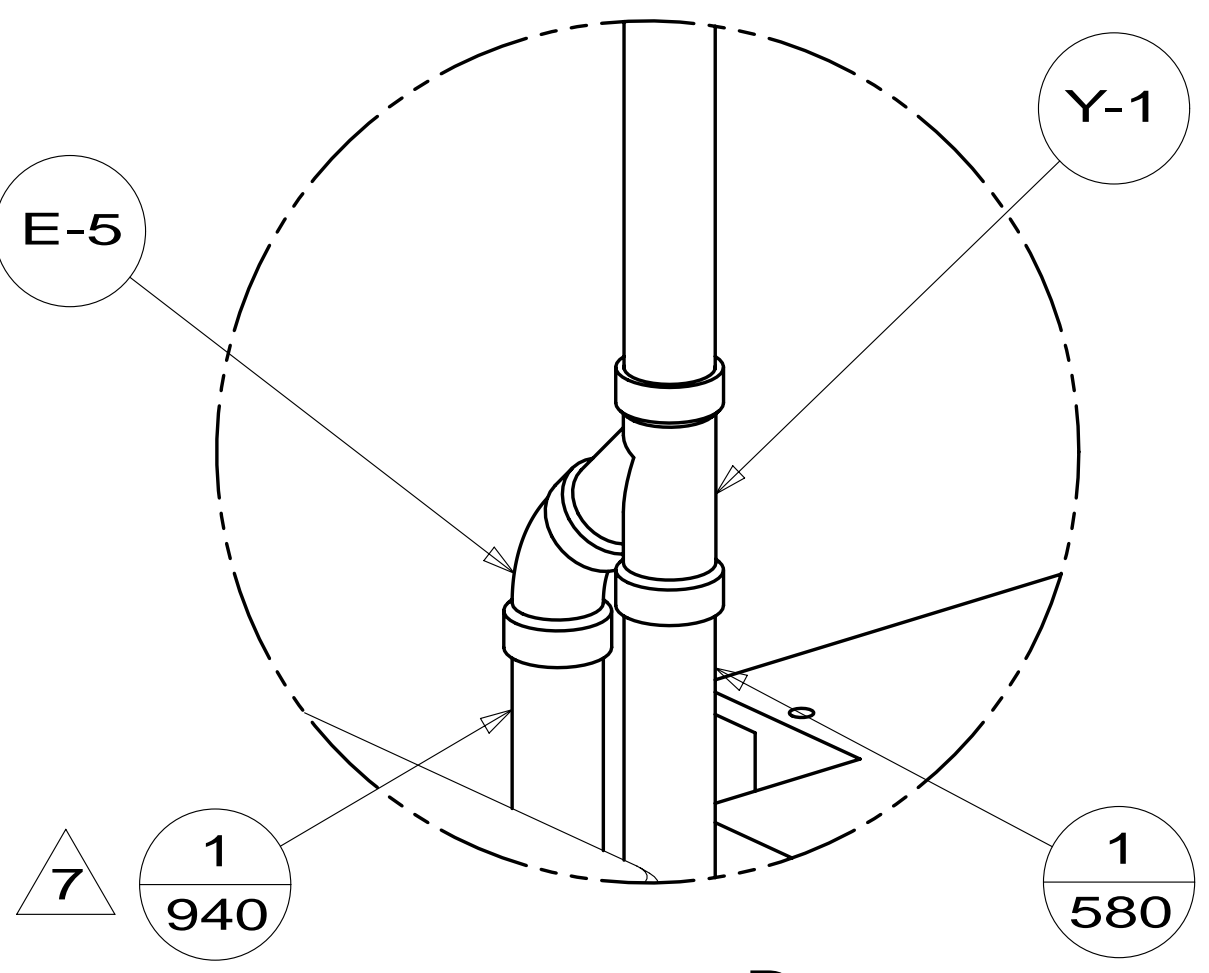
DETAIL B  
(SHOWN W/OUT CABINETS AND FLOOR)



DETAIL C  
(SHOWN W/OUT CABINETS AND FLOOR)



VIEW A

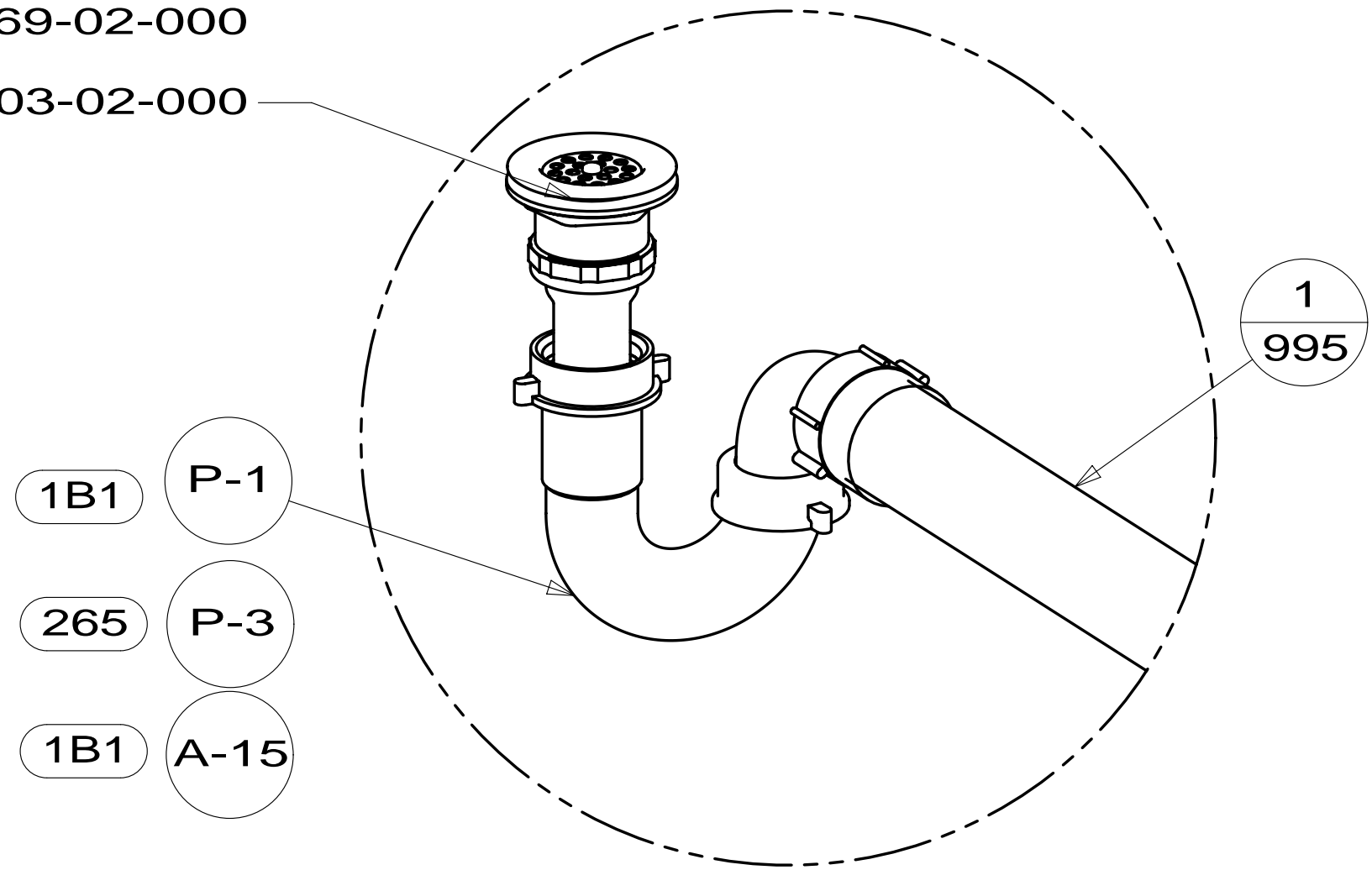


DETAIL D  
(SHOWN W/OUT CABINETS)

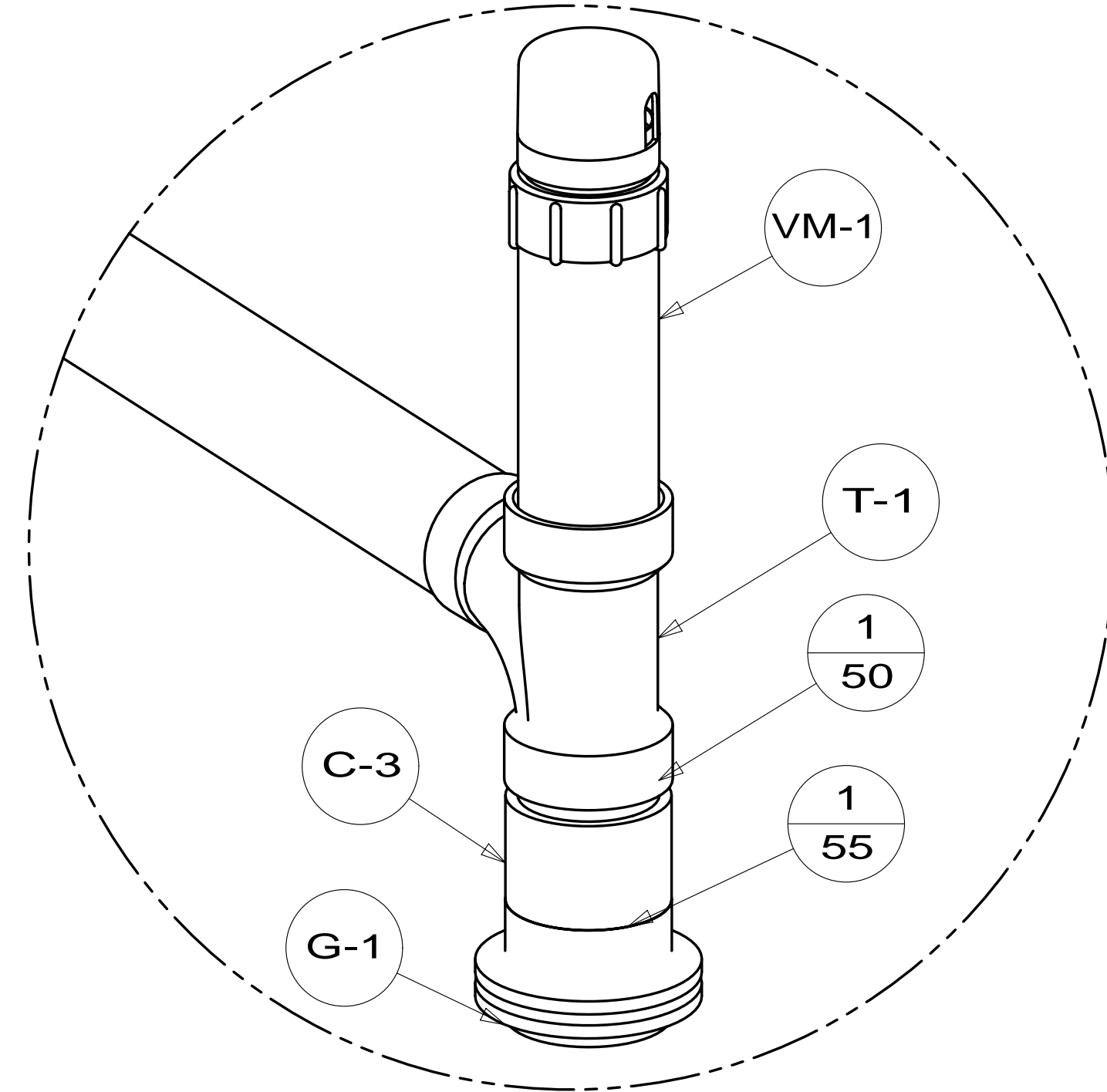
FIRST USED	14 E30T	
TITLE:	DO NOT SCALE DRAWING	
SHEET 2	PART NO	185997
	REV	
26-Mar-2014		

\* 185997 \* A

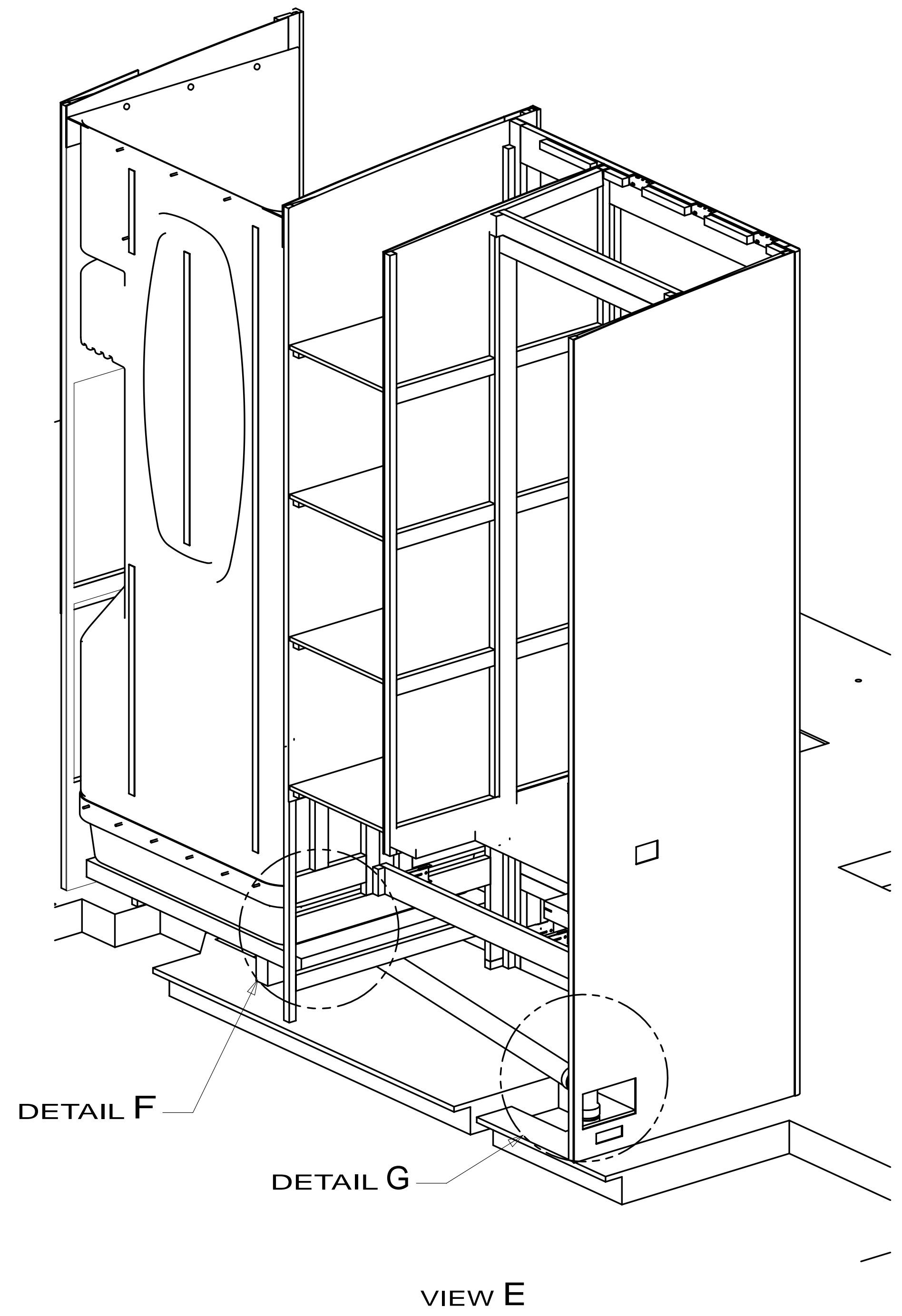
- SHOWER INSTL-ENCLOSURE
- 147936-04-000
- WASHER-RUBBER
- 127440-02-CHT
- SEALER
- 069640-01-000
- STRAINER
- 066440-01-000
- TAIL PIECE
- 011069-02-000
- NUT
- 130403-02-000



DETAIL F  
(SHOWN W/OUT SHOWER PAN AND FLOOR)

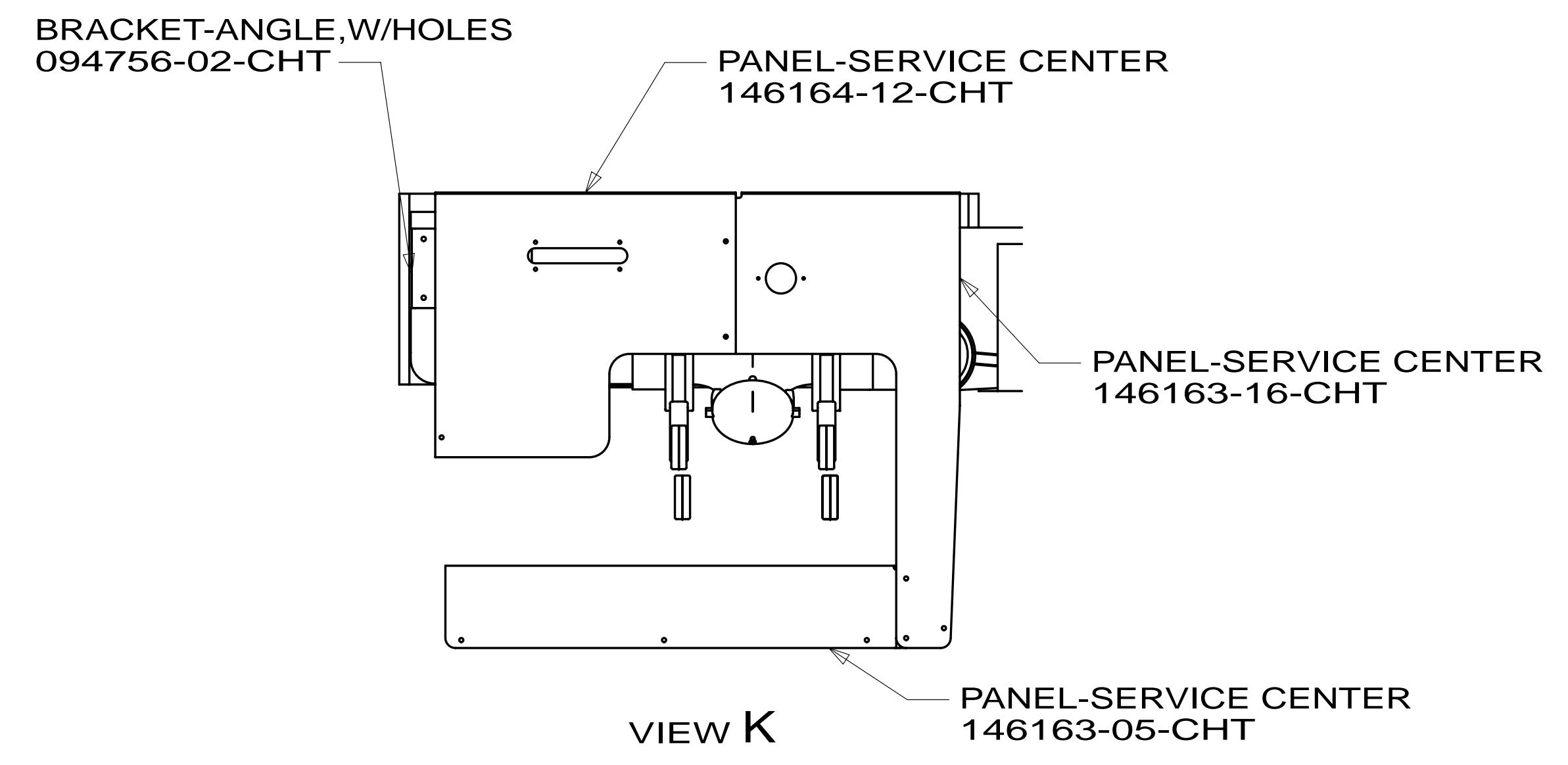
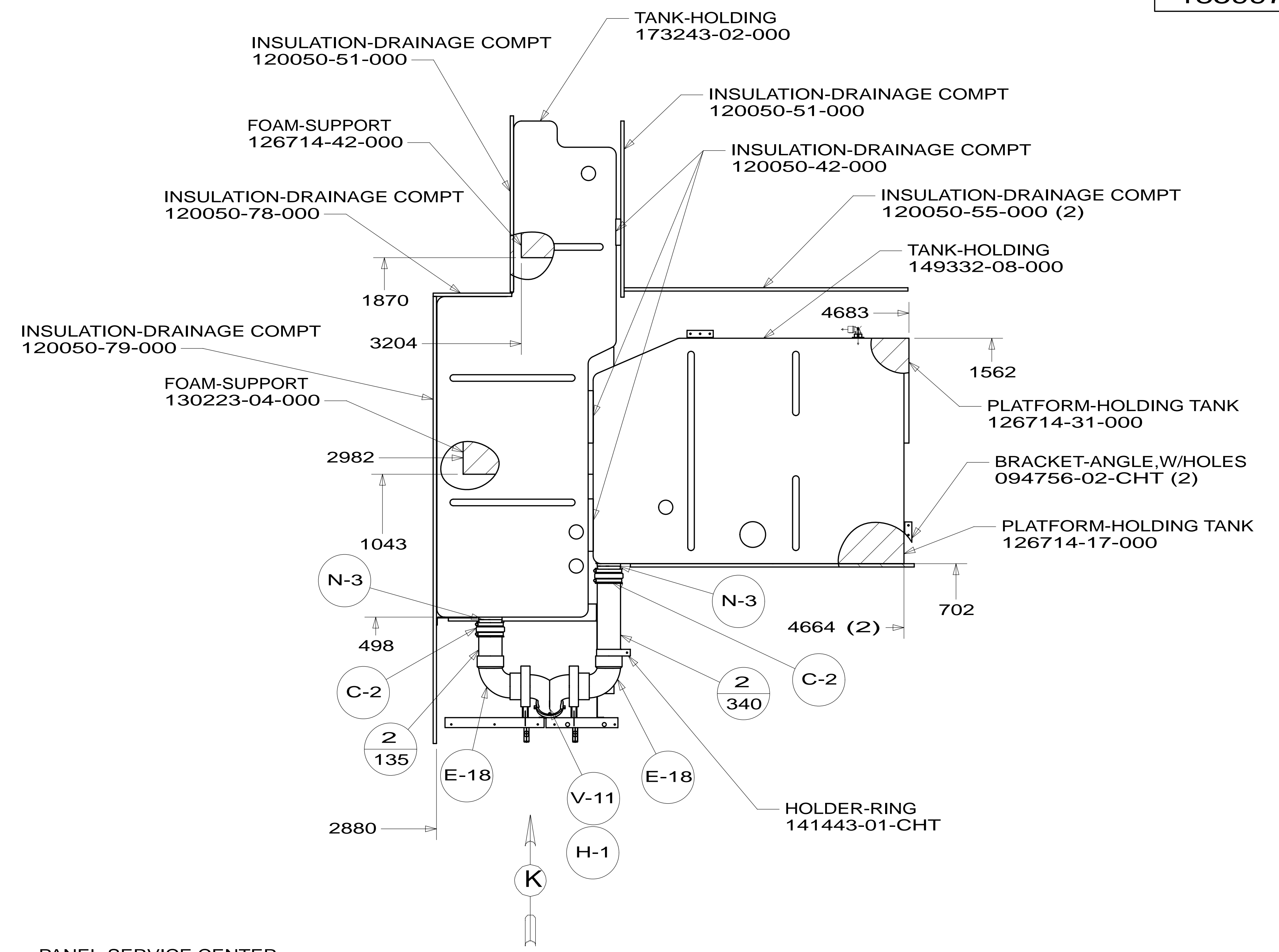
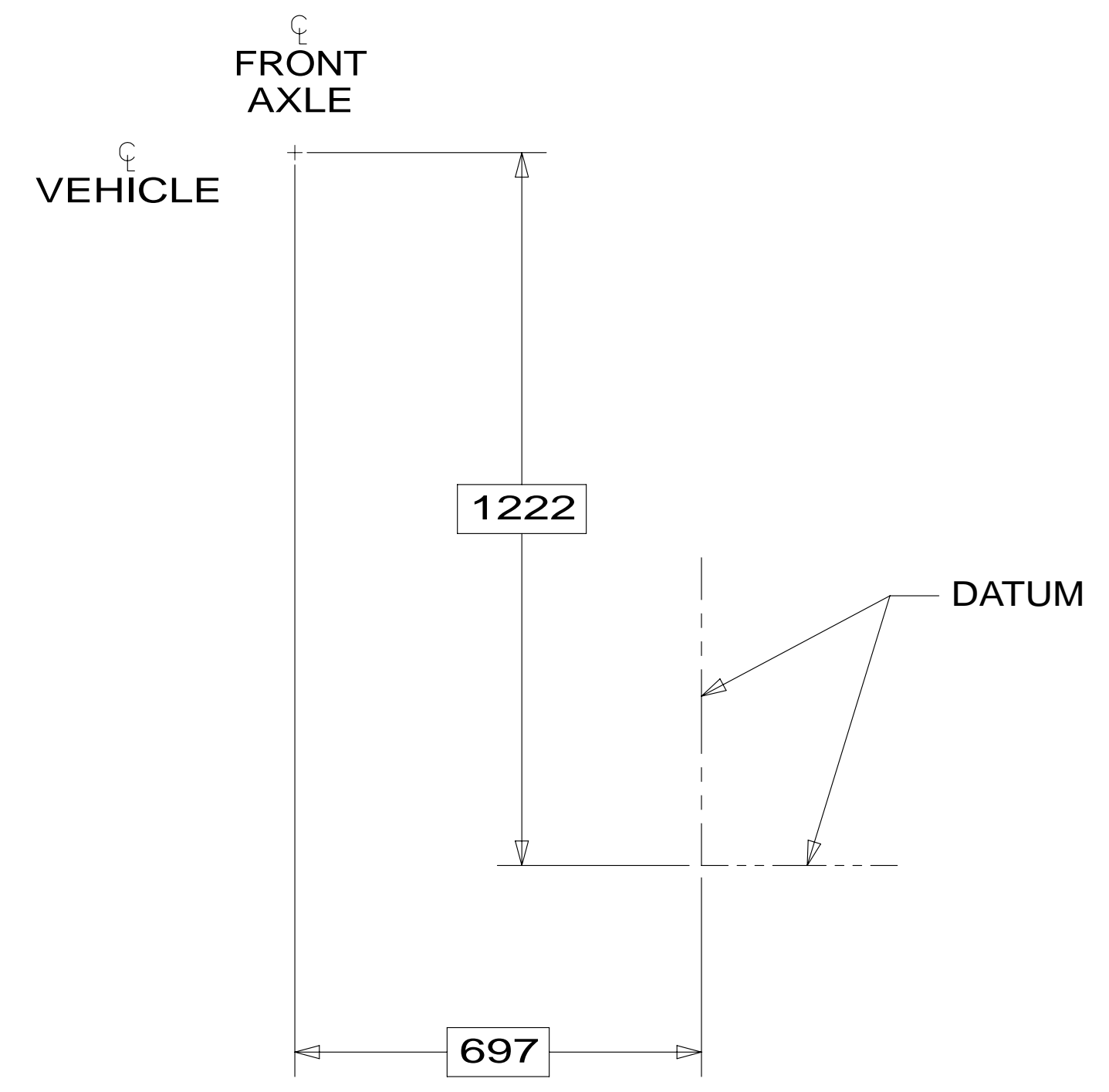


DETAIL G  
(SHOWN W/OUT CABINETS AND FLOOR)



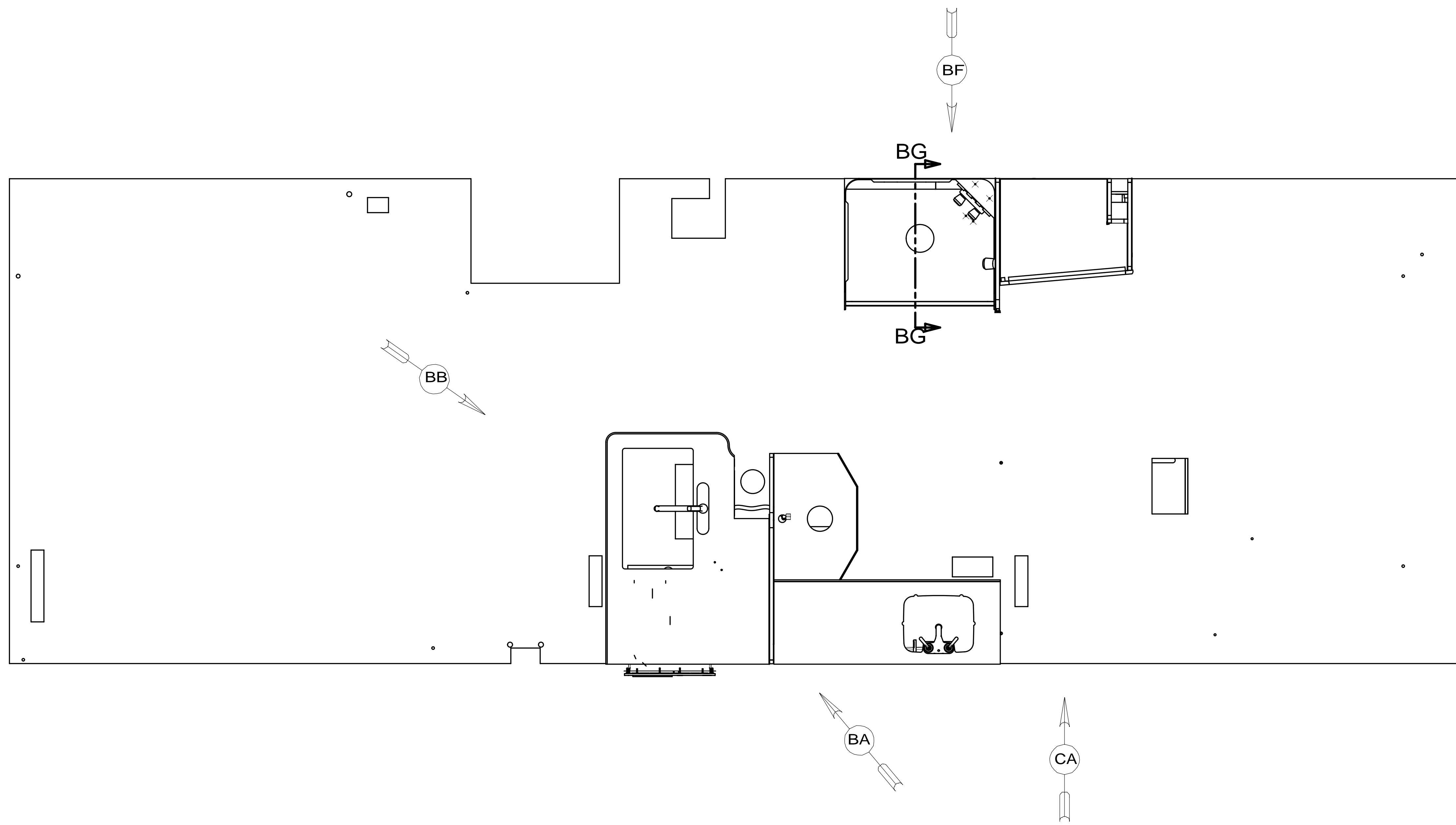
FIRST USED	14 E30T	
TITLE:	DO NOT SCALE DRAWING	
TITLE:	DRAINAGE SYSTEM INSTL	
SHEET 3	PART NO 185997	REV
1 26-Mar-2014		

\* 185997 \* A



FIRST USED	14 E30T	
TITLE:	DO NOT SCALE DRAWING	
TITLE:	DRAINAGE SYSTEM INSTL	
SHEET 4	PART NO 185997	REV
		26-Mar-2014

\* 185997 \* A



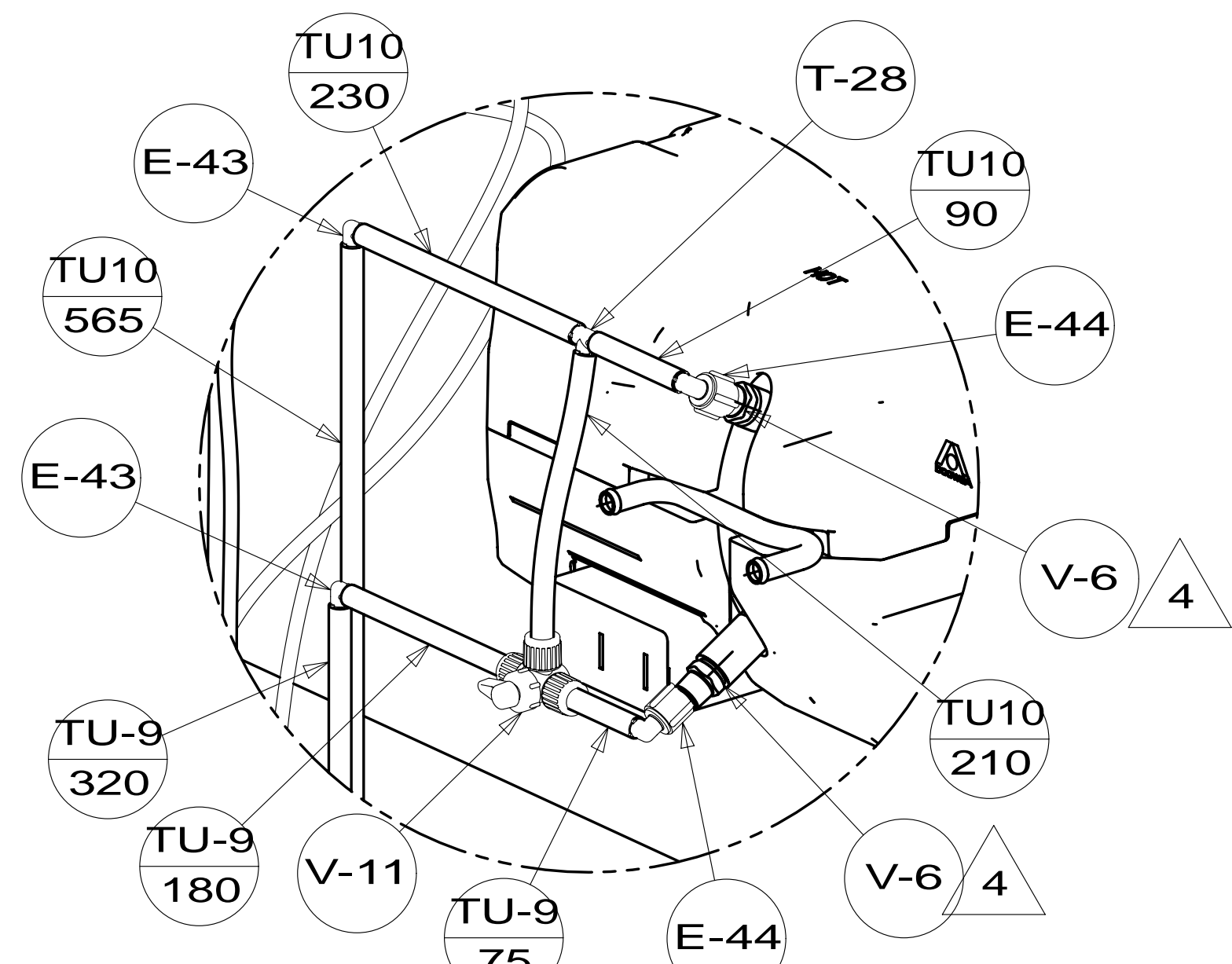
9. ALL CRIMP FITTINGS TO 3/4" PEX TUBING REQUIRE 3/4" CLAMP 140171-05-000.
8. ALL CRIMP FITTINGS TO 1/2" PEX TUBING REQUIRE 1/2" CLAMP 140171-03-000.
7. ALL CRIMP FITTINGS TO 5/8" FLEX TUBING REQUIRE 5/8" CLAMP 140171-04-000.
6. LABEL HOT AND COLD SUPPLY TUBES AND TAPE FITTING TO TUBE BEFORE CABINET SET TO PREVENT MOVEMENT.
5. ADD PIPE WRAP (LADDER SCRAP 110157-02-000) INSULATION.
4. ADD TEFLON TAPE 010405-02-000.
3. ALL TUBING TO BE SECURED AT 1200 INTERVALS MAXIMUM WITH CLAMP 010495-01-000 AND SCREW 000G67-10-12U OR EQUIVALENT.
2. TUBING TO BE INSTALLED WITH SUFFICIENT SLOPE TO PROVIDE DRAINAGE TO NEAREST VALVE.
1. PLASTIC FITTINGS TO BE SEALED WITH SEALANT 084456-01-000.

NOTES:

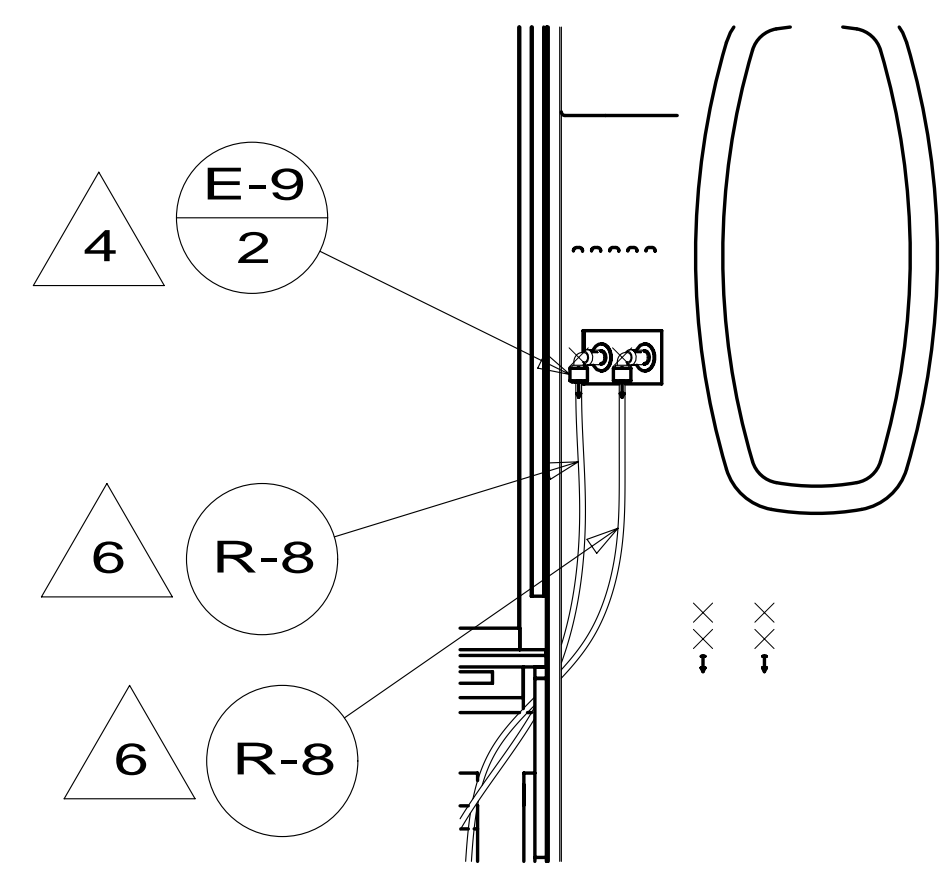
FOR  
WATER  
CALLOUTS  
SEE DWG NO  
116230-01-000

<b>WINNEBAGO</b>		COPYRIGHT 2014 WINNEBAGO INDUSTRIES, INC.	
DFT-ORIG	ORIG. DATE	ALL DIMENSIONS ARE IN MILLIMETERS	
CHKR		MATERIAL: 14 E30T	
P.E.		UNSPECIFIED TOLERANCES ARE: WHOLE DIM (X) : 3 ONE-PLACE (X.X) : 1.5 TWO-PLACE (X.XX) : 0.50 ANGLE : 1°	
M.E.	FIRST USED	THIRD ANGLE PROJECTION	
DSNR		DO NOT SCALE DRAWING REFER TO ES0018 FOR FASTENER TIGHTENING GUIDELINES	
TITLE: <b>WATER SYSTEM INSTL</b>			
SHEET 1 OF 3	PART NO	<b>185995</b>	REV
REF:	1	03-Jan-2014	

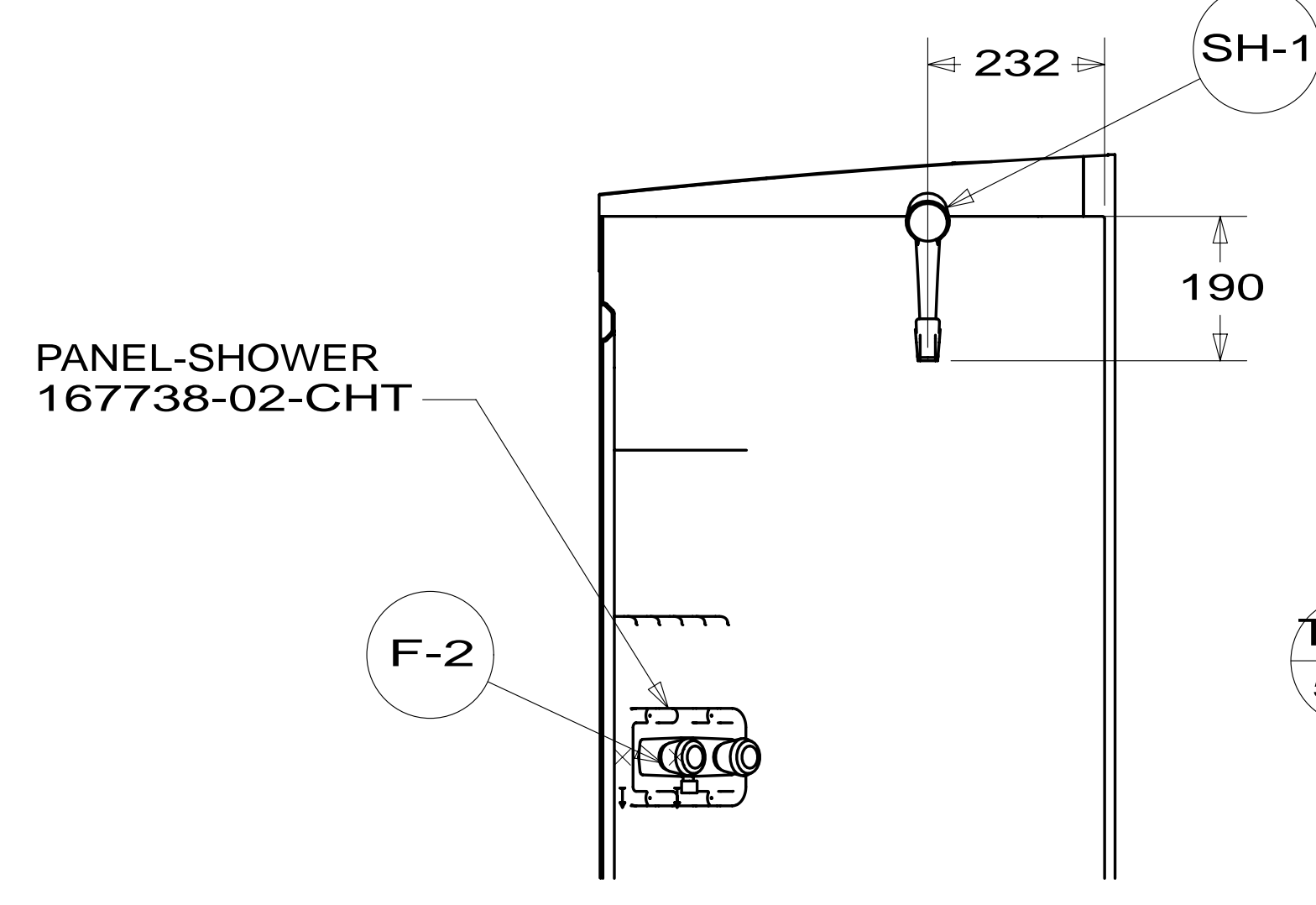
\* 185995 \* A



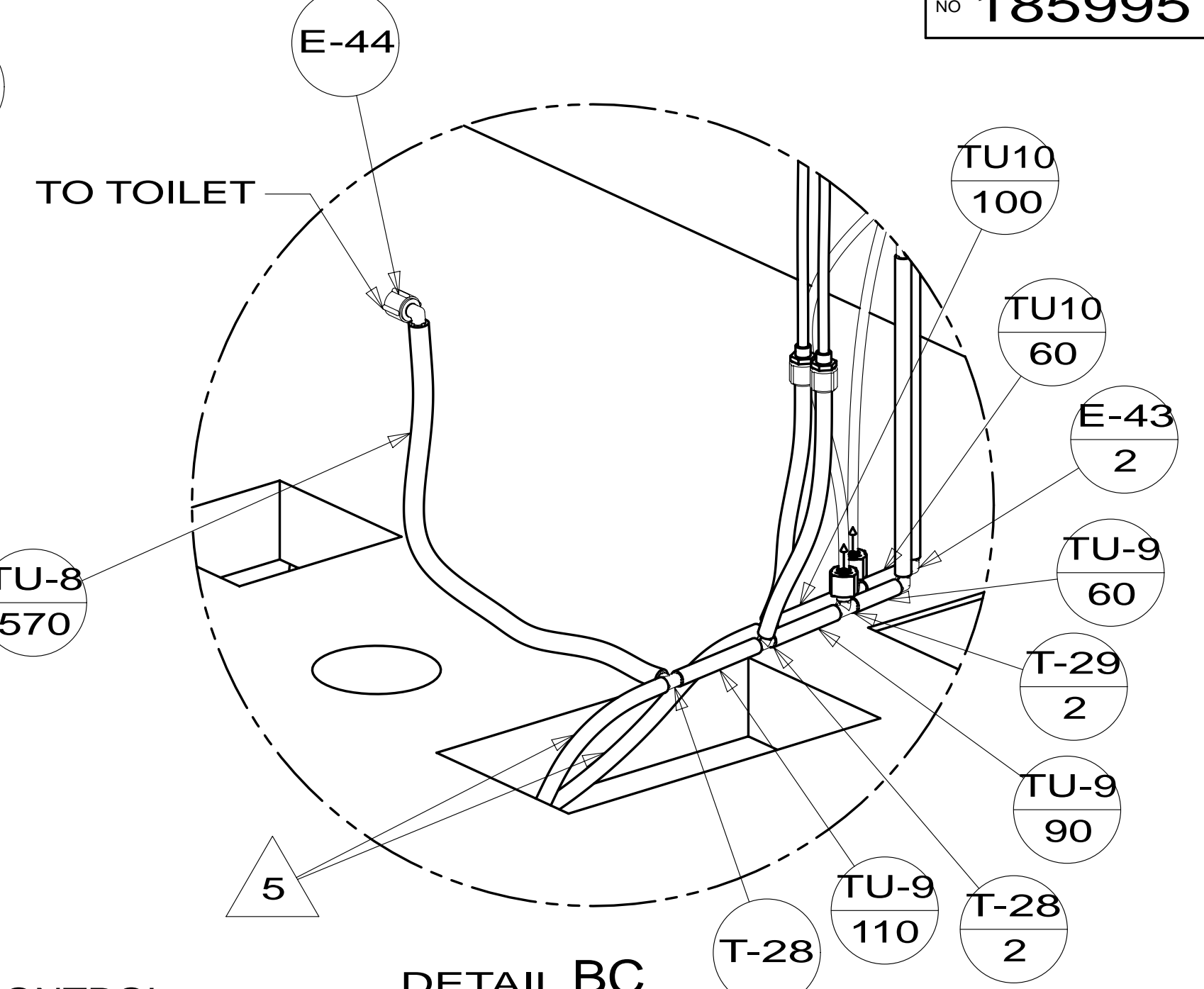
DETAIL BD  
(SHOWN W/OUT CABINETS)



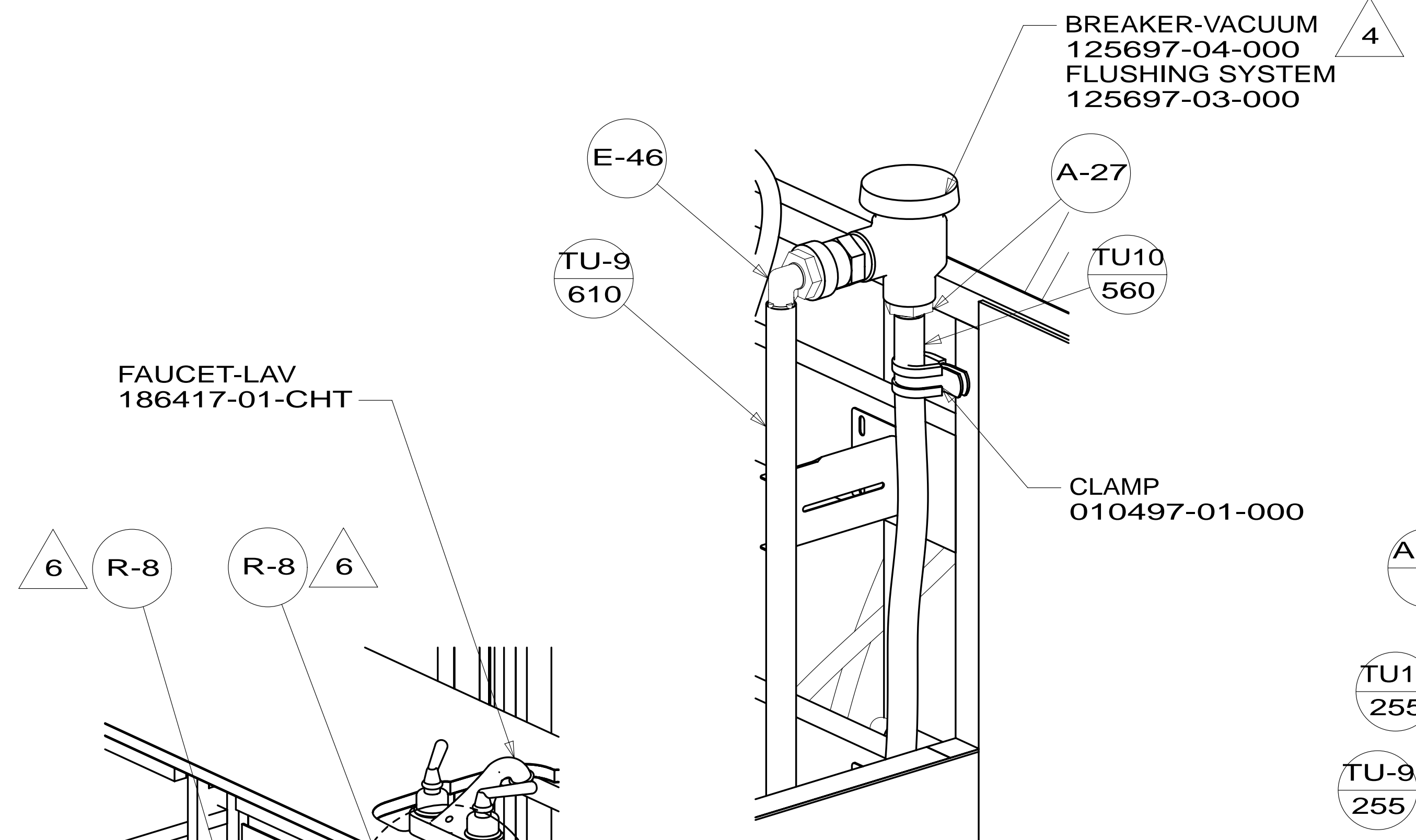
VIEW BF  
(ROTATED)



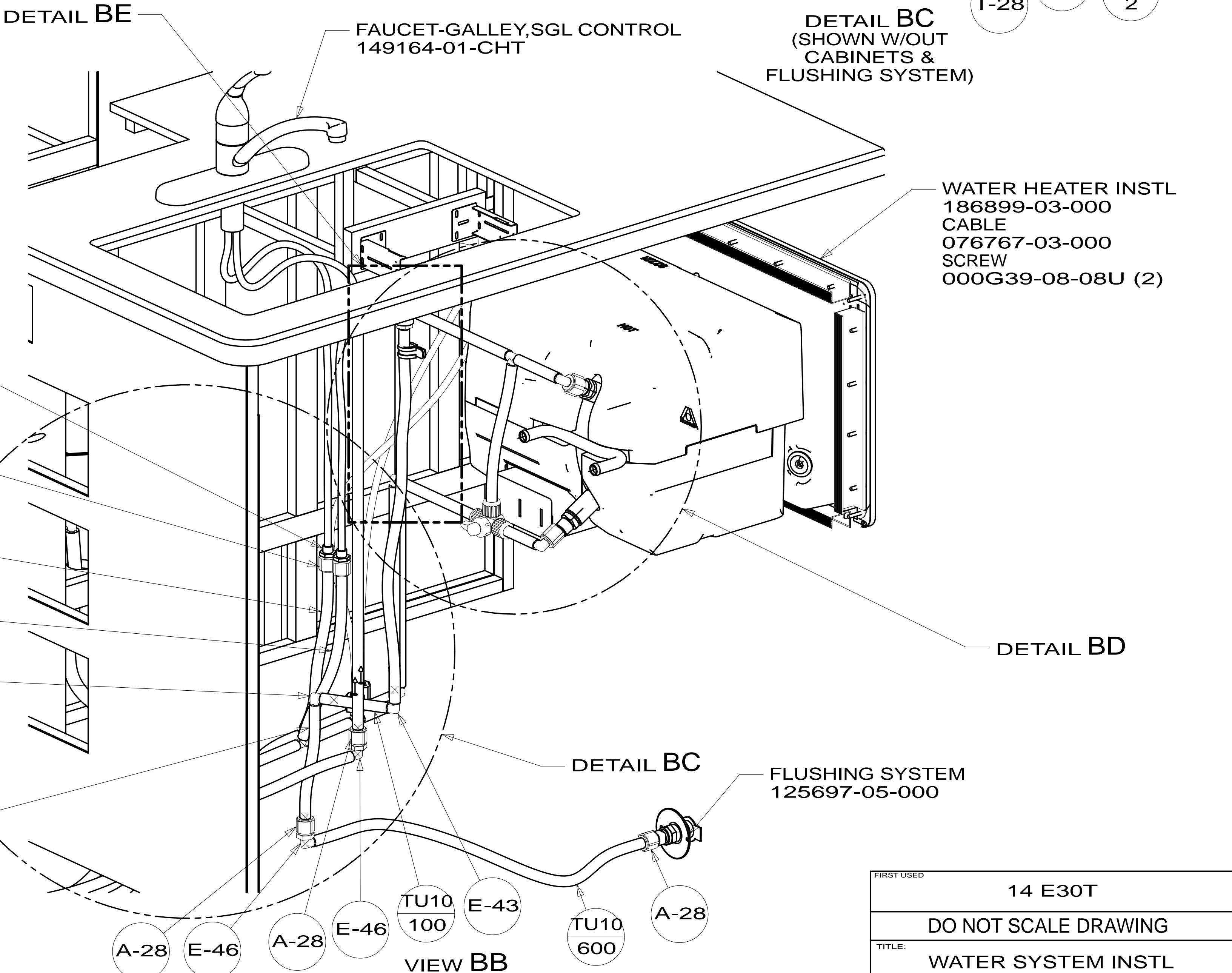
SECTION BG-BG  
(ROTATED)



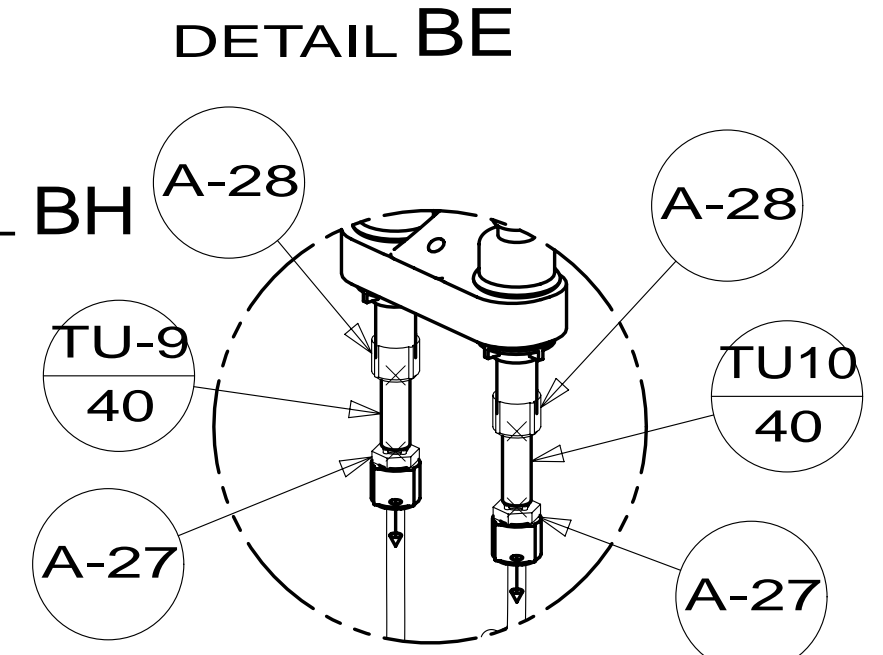
DETAIL BC  
(SHOWN W/OUT CABINETS & FLUSHING SYSTEM)



VIEW BA



VIEW BB



DETAIL BH  
(SHOWN W/OUT CABINETS)

FIRST USED	14 E30T	
TITLE:	DO NOT SCALE DRAWING	
SHEET 2	PART NO	185995
	REV	
		03-Jan-2014

\* 185995

INSULATION-DRAINAGE COMPT  
120050-51-000

BRACKET-HOLDING TANK  
126796-05-CHT

TANK ASM-WATER,78 GAL  
149269-04-000

BRACKET-ANGLE,W/HOLES  
094756-02-CHT

INSULATION-DRAINAGE COMPT  
120050-54-000

BRACKET-ANGLE,W/HOLES  
094756-02-CHT

DETAIL CC

ONLY SHOWING LINES UNDER FLOOR

PANEL-SERVICE  
150123-27-CHT

PANEL-SERVICE  
150122-07-CHT

CLIP-GRIPPER  
091952-03-000

VIEW CA

BRACKET-PUMP,WATER  
169229-01-CHT  
PANEL-WATER PUMP  
149477-08-CHT  
FOAM-PAD  
140364-01-CHT

CLAMP  
010495-04-000  
RIVET  
113133-03-CHT

VIEW CB

DETAIL CC

SCREW  
000G60-08-12U

SECTION CE-CE

FIRST USED	14 E30T
TITLE:	DO NOT SCALE DRAWING
TITLE:	WATER SYSTEM INSTL
SHEET 3	PART NO 185995 REV