

10. TRIM TAIL PIECE TO FIT.

- 9. SEE DRAWING 061607 FOR INSTALLATION OF GROMMETS.
- 8. SECURE DRAINAGE PIPES TO CABINET USING WIRE TIE 108046-02-000, AND SCREW 000G67-10-12U AT INTERVALS OF NOT OF NOT MORE THAN 4 FEET APART.
- 7. SECURE VENT PIPE TO FLOOR WITH CLAMP 062401-02-000 (2), SCREW 000G67-10-12U (2), BRACKET 136878-01-CHT (2).
- 6. VENT PIPE MUST PROJECT 51 MIN AND 64 MAX ABOVE ROOF FOR PROPER FIT AND FUNCTION. ADD S-1 (116666-01-CHT SEAL-VENT PIPE) AROUND PIPE ON ROOF BEFORE VENT CAP IS INSTALLED.
- 5. SEAL AROUND SHOWER WITH SILICONE.
- 4. USE SMOOTH PLUMBERS PUTTY 167459-01-000 TO SEAL STRAINER (0.2 PER STRAINER).
- 3. ALL PIPE AND FITTINGS TO BE ASSEMBLED WITH SOLVENT 004020-01-000 (USA), 004020-02-000 (CAN)
- 2. SLOPE OF TRAP ARM MUST BE 6 PER 305 mm.
- 1. SLOPE OF HORIZONTAL PIPING TO BE MINIMUM OF 3 PER 305 mm.

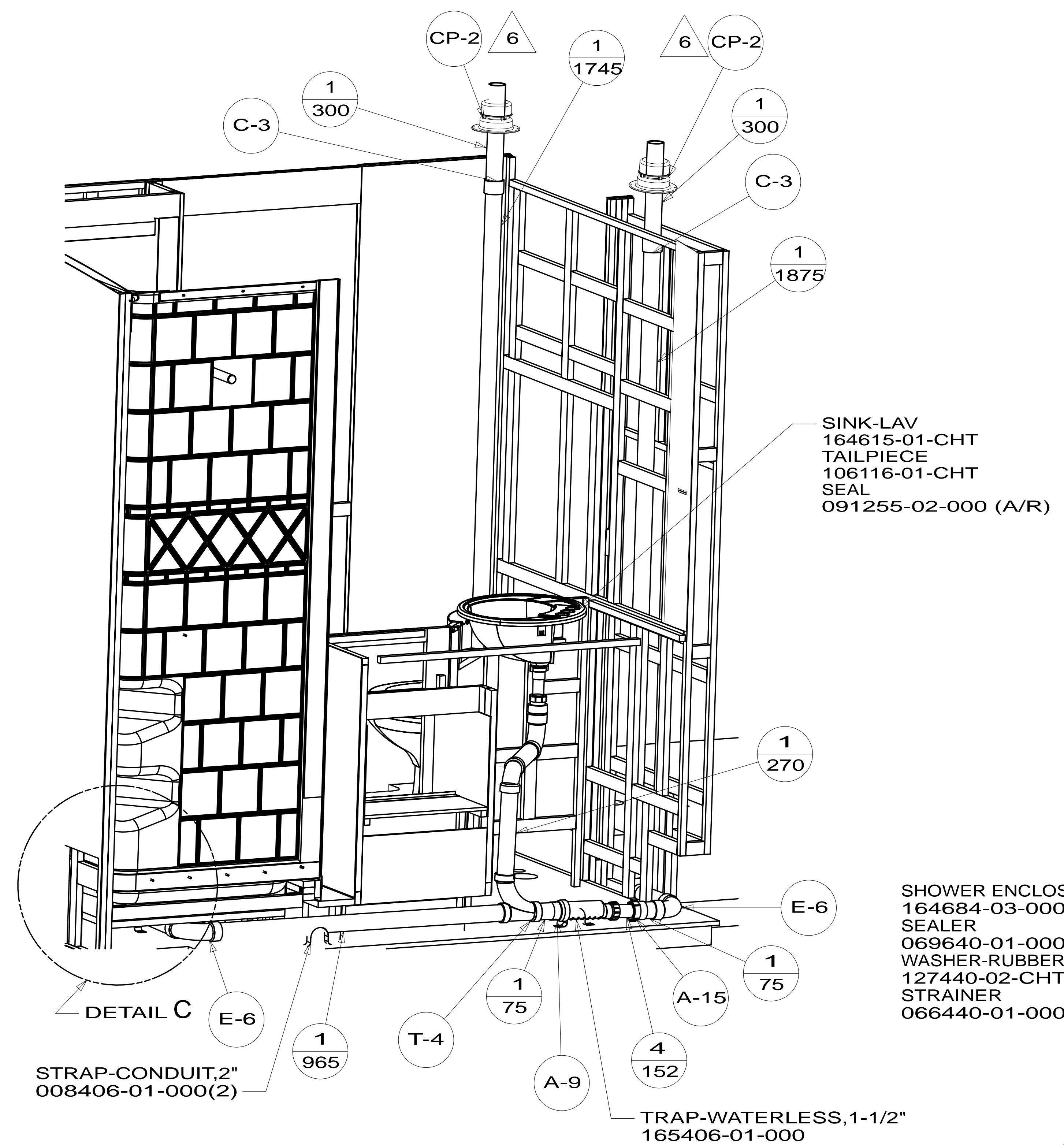
NOTES:

1B1 CODES/STANDARDS-USA
265 CODES/STDA-CSA/CMVSS

		COPYRIGHT 2013 WINNEBAGO INDUSTRIES, INC.
DFT-ORIG	ORIG. DATE	
CHKR	ALL DIMENSIONS ARE IN MILLIMETERS	
P.E.		
M.E.	FIRST USED	
DSNR	14 D30A	
UNSPECIFIED TOLERANCES ARE:		MATERIAL:
WHOLE DIM (X)	: 3	
ONE-PLACE (X.X)	:	
TWO-PLACE (X.XX)	:	
ANGLE	:	
THIRD ANGLE PROJECTION		
DO NOT SCALE DRAWING		REFER TO ES0018 FOR FASTENER TIGHTENING GUIDELINES
TITLE: DRAINAGE SYSTEM INSTL		
SHEET 1 OF 4	PART NO	186269
REF:	1	14-Oct-2013

FOR DRAINAGE CALLOUTS SEE DWG NO 116229-01-000

* 186269 *



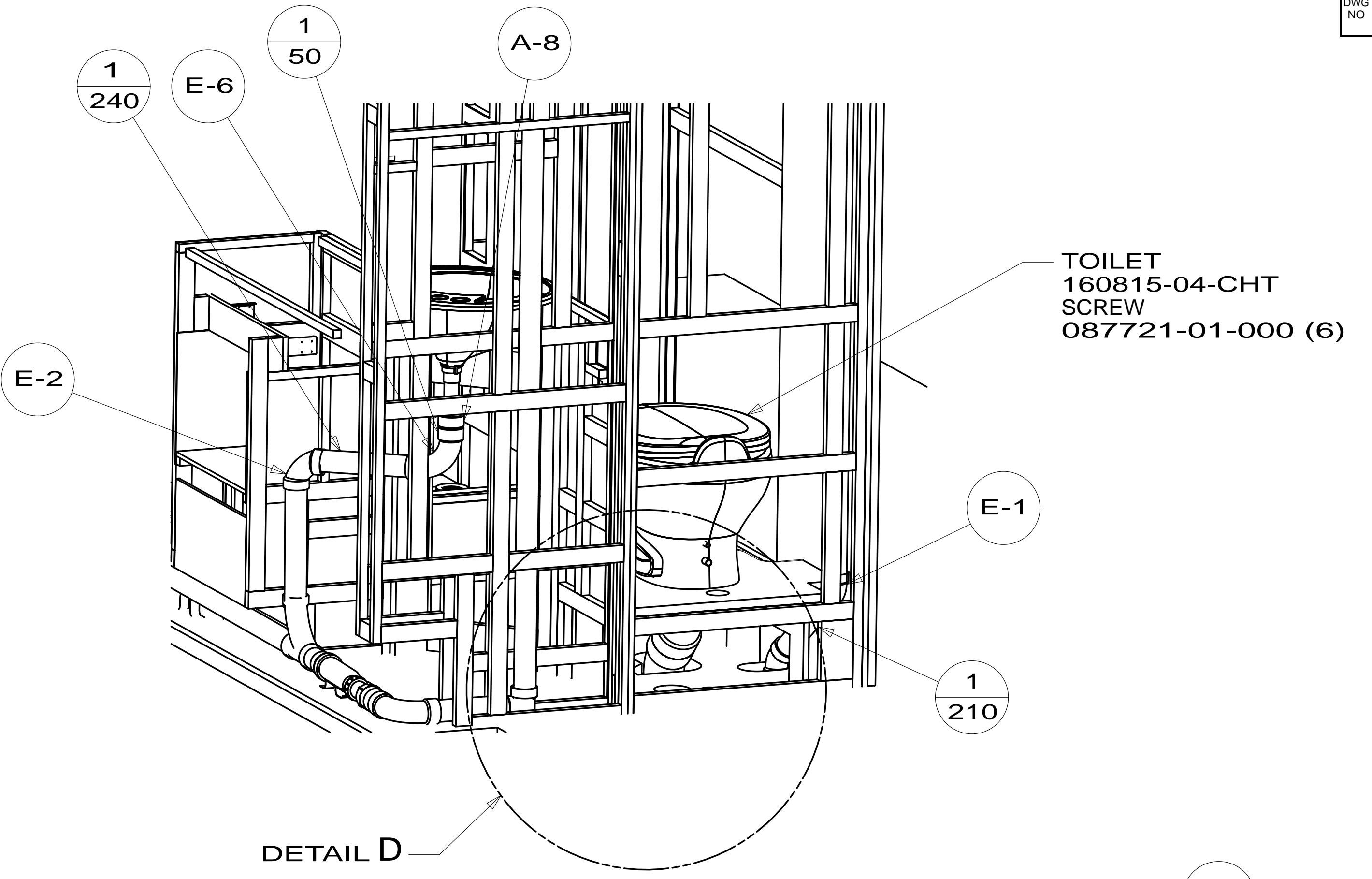
SINK-LAV
164615-01-CHT
TAILPIECE
106116-01-CHT
SEAL
091255-02-000 (A/R)

SHOWER ENCLOSURE ASM
164684-03-000
SEALER
069640-01-000
WASHER-RUBBER
127440-02-CHT
STRAINER
066440-01-000

STRAP-CONDUIT,2"
008406-01-000(2)

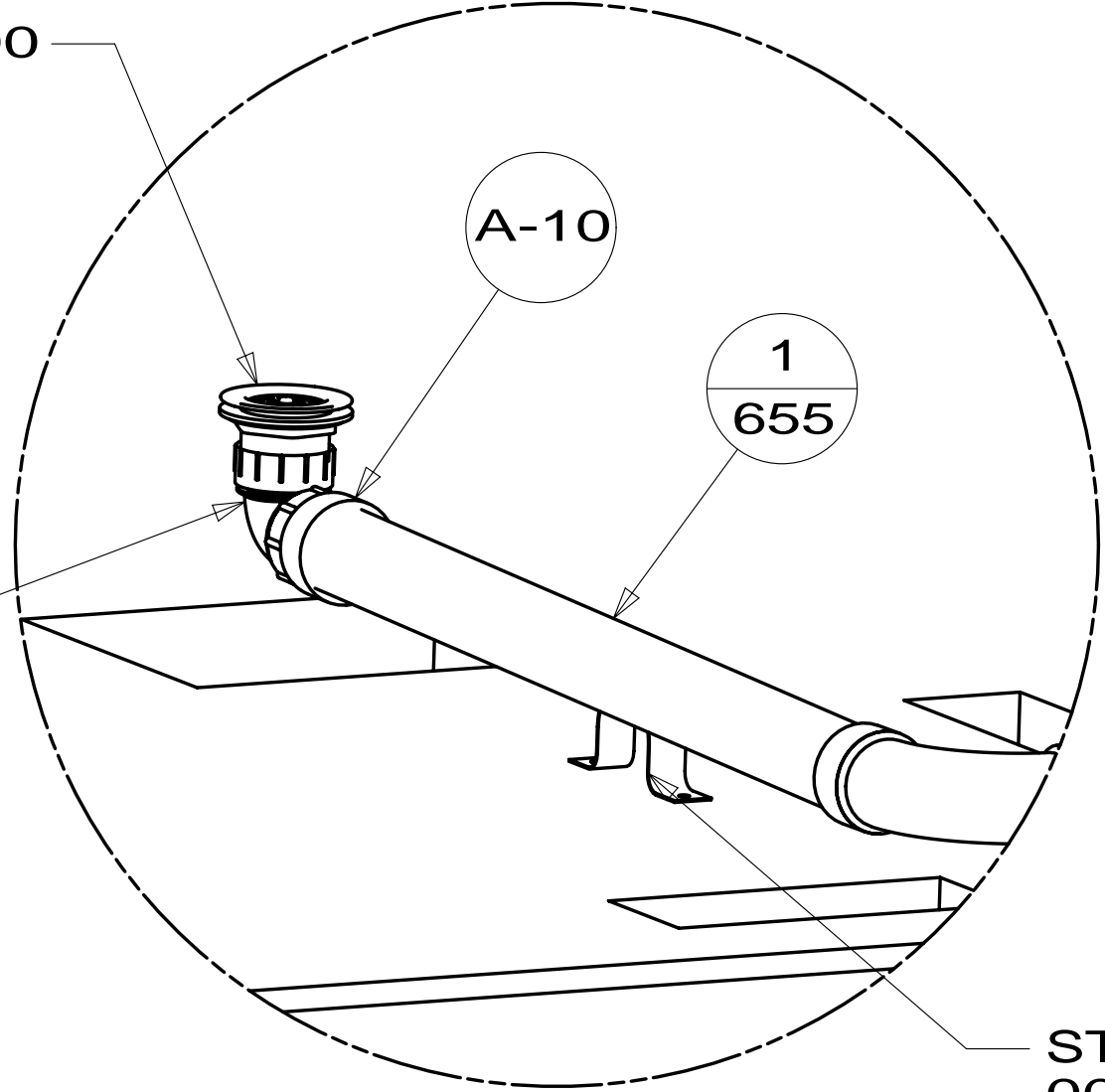
TRAP-WATERLESS,1-1/2"
165406-01-000

ADAPTER-ANGLE,WATERLESS TRAP
165406-02-000

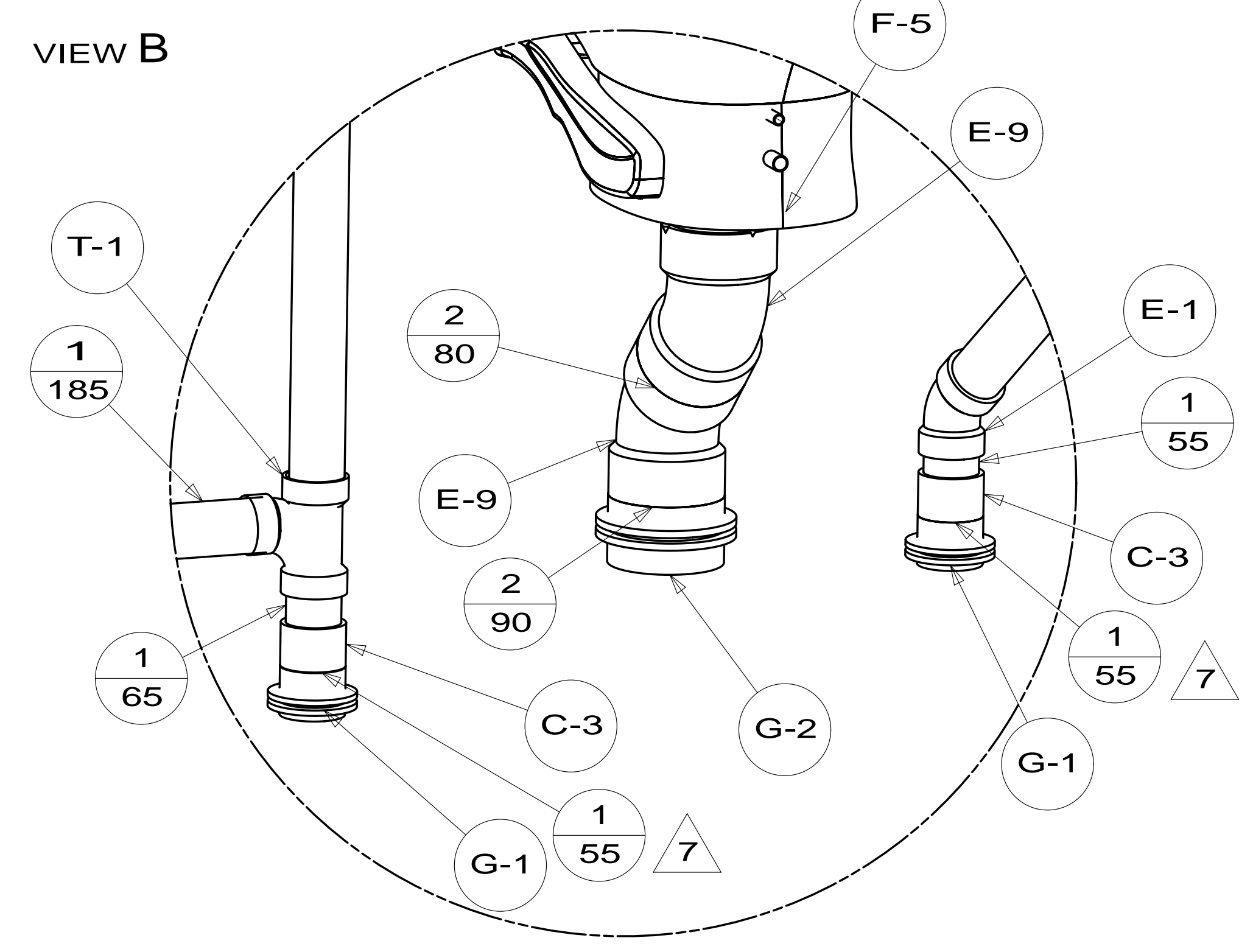


DETAIL D

VIEW B



DETAIL C
(SHOWN W/OUT CABINETS AND SHOWER)



DETAIL D
(SHOWN W/OUT CABINETS AND FLOOR)

STRAP-CONDUIT,2"
008406-01-000

FIRST USED	14 D30A	
TITLE:	DO NOT SCALE DRAWING	
TITLE:	DRAINAGE SYSTEM INSTL	
SHEET 2	PART NO	186269
	REV	

SINK-GALLEY
173873-01-CHT
BRACKET
140002-01-CHT (8)
SCREW
142261-02-CHT (8)
STRAINER
092303-01-000 (2)
SEAL
091255-03-000
(2130)

NUT
130403-01-000
TAIL PIECE
011069-05-000 10

NUT
130403-01-000
TAIL PIECE
011069-05-000 10

STRAP-CONDUIT,2"
008406-01-000(3)
SCREW
000G39-08-12U(6)

265 1/170
1B1 1/70

1/70 1B1
1/170 265

P-1 1B1
P-3 265
A-15 1B1

1/200 1B1
1/250 265

P-1 1B1
P-3 265
A-15 1B1

3
1350

A-14 T-1

1/290 E-1
1/315 E-1

1/1145

E-1 1/195 E-1

1/500 1/175

Y-1

VIEW F

ELBOW
136111-01-000

ELBOW
136111-01-000

A-13

FITTING-BULKHEAD
136656-01-CHT

1/110

1/55

G-1

C-3

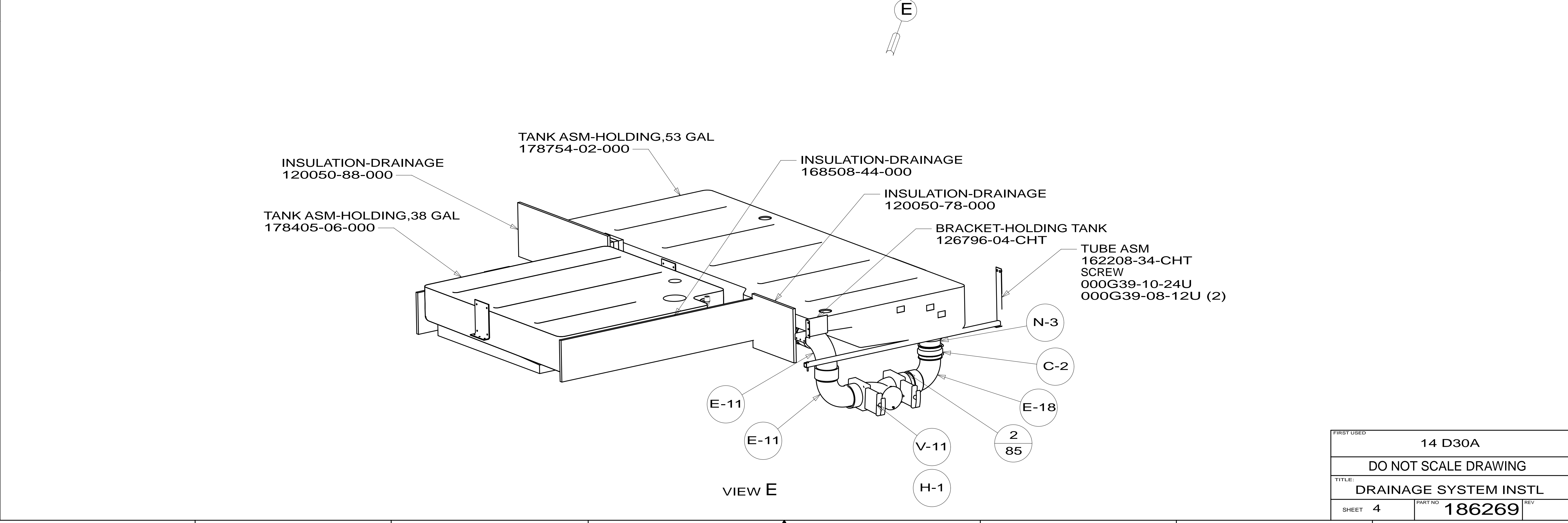
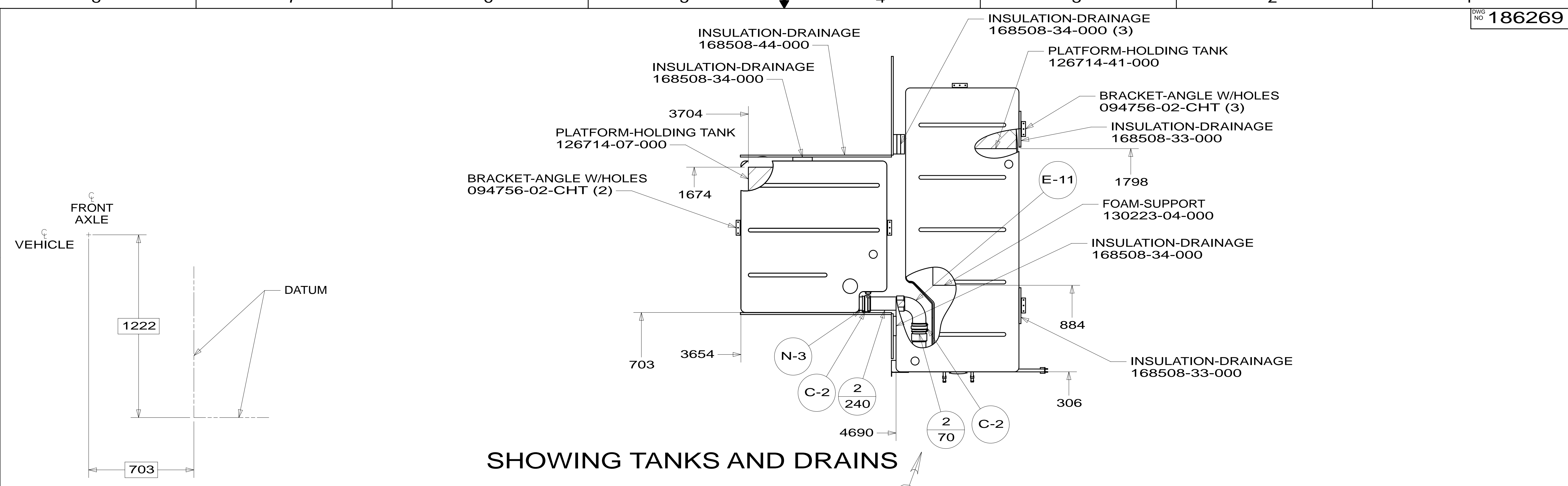
DETAIL G

STRAP-CONDUIT,2"
008406-01-000
SCREW
000G39-08-12U(2)

DETAIL G

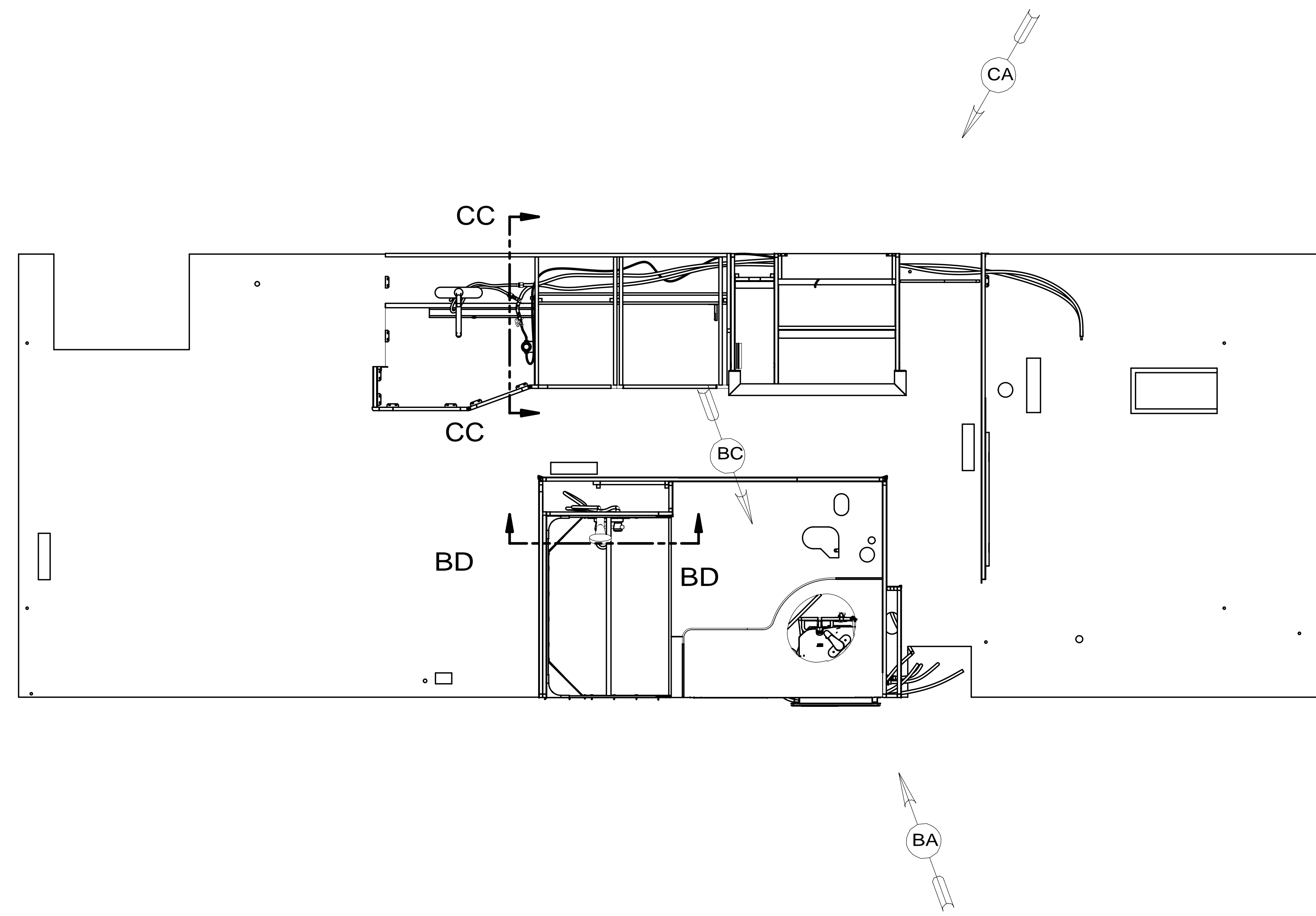
FIRST USED	14 D30A	
TITLE:	DO NOT SCALE DRAWING	
TITLE:	DRAINAGE SYSTEM INSTL	
SHEET 3	PART NO	186269
	REV	

A * 186269



FIRST USED	14 D30A	
TITLE:	DO NOT SCALE DRAWING	
TITLE:	DRAINAGE SYSTEM INSTL	
SHEET 4	PART NO 186269	REV
		14-Oct-2013

* 186269



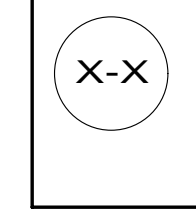
9. ALL CRIMP FITTINGS TO 3/4" PEX TUBING REQUIRE 3/4" CLAMP 140171-05-000.
8. ALL CRIMP FITTINGS TO 1/2" PEX TUBING REQUIRE 1/2" CLAMP 140171-03-000.
7. ALL CRIMP FITTINGS TO 5/8" FLEX TUBING REQUIRE 5/8" CLAMP 140171-04-000.
6. LABEL HOT AND COLD SUPPLY TUBES AND TAPE FITTING TO TUBE BEFORE CABINET SET TO PREVENT MOVEMENT.
5. ADD PIPE WRAP (LADDER SCRAP 110157-02-000) INSULATION.
4. ADD TEFLON TAPE 010405-02-000.
3. ALL TUBING TO BE SECURED AT 1200 INTERVALS MAXIMUM WITH CLAMP 010495-01-000 AND SCREW 000G67-10-12U OR EQUIVALENT.
2. TUBING TO BE INSTALLED WITH SUFFICIENT SLOPE TO PROVIDE DRAINAGE TO NEAREST VALVE.
1. PLASTIC FITTINGS TO BE SEALED WITH SEALANT 084456-01-000.

NOTES:

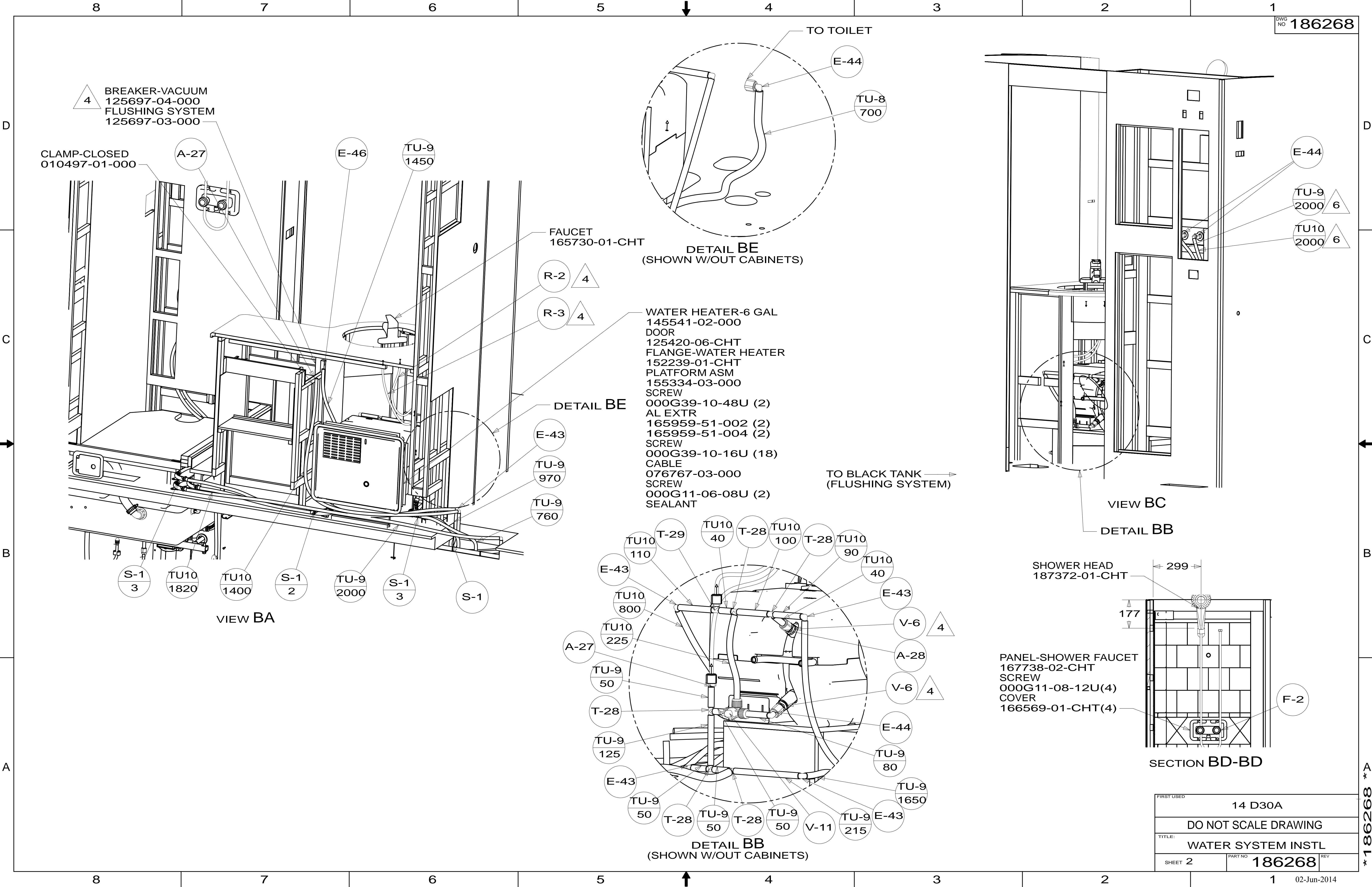
145 REFR-EXTRA CAP W/ICEMAKER

		COPYRIGHT 2014 WINNEBAGO INDUSTRIES, INC.	
DFTR	ORIG. DATE		
CHKR	ALL DIMENSIONS ARE IN MILLIMETERS		
P.E.			
M.E.	FIRST USED		
DSNR	14 D30A		
UNSPECIFIED TOLERANCES ARE:		MATERIAL:	
WHOLE DIM (X)	: 3		
ONE-PLACE (X.X)	:		
TWO-PLACE (X.XX)	:		
ANGLE	:		
THIRD ANGLE PROJECTION			
DO NOT SCALE DRAWING		REFER TO ES0018 FOR FASTENER TIGHTENING GUIDELINES	
TITLE: WATER SYSTEM INSTL			
SHEET 1 OF 4	PART NO	186268	REV
REF:	1	02-Jun-2014	

FOR WATER CALLOUTS SEE DWG NO 116230-01-000

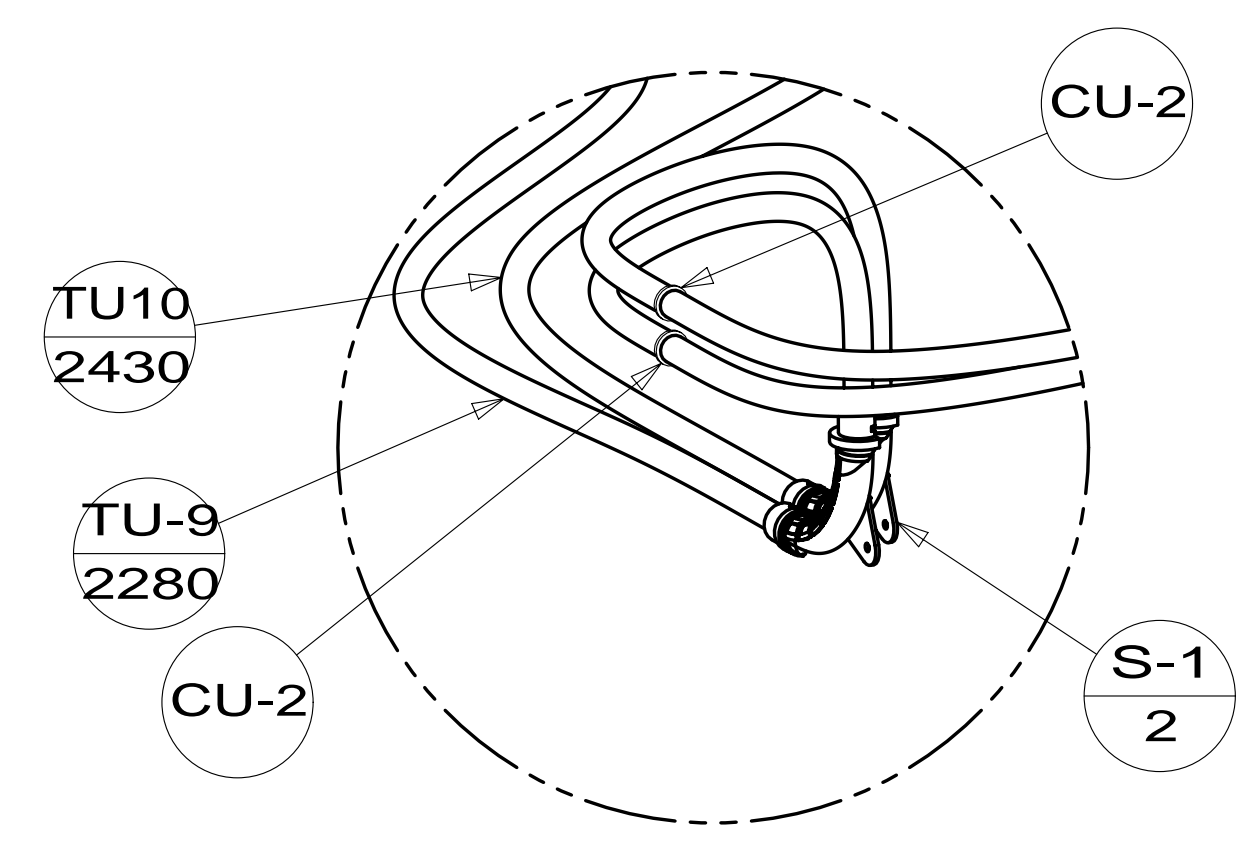
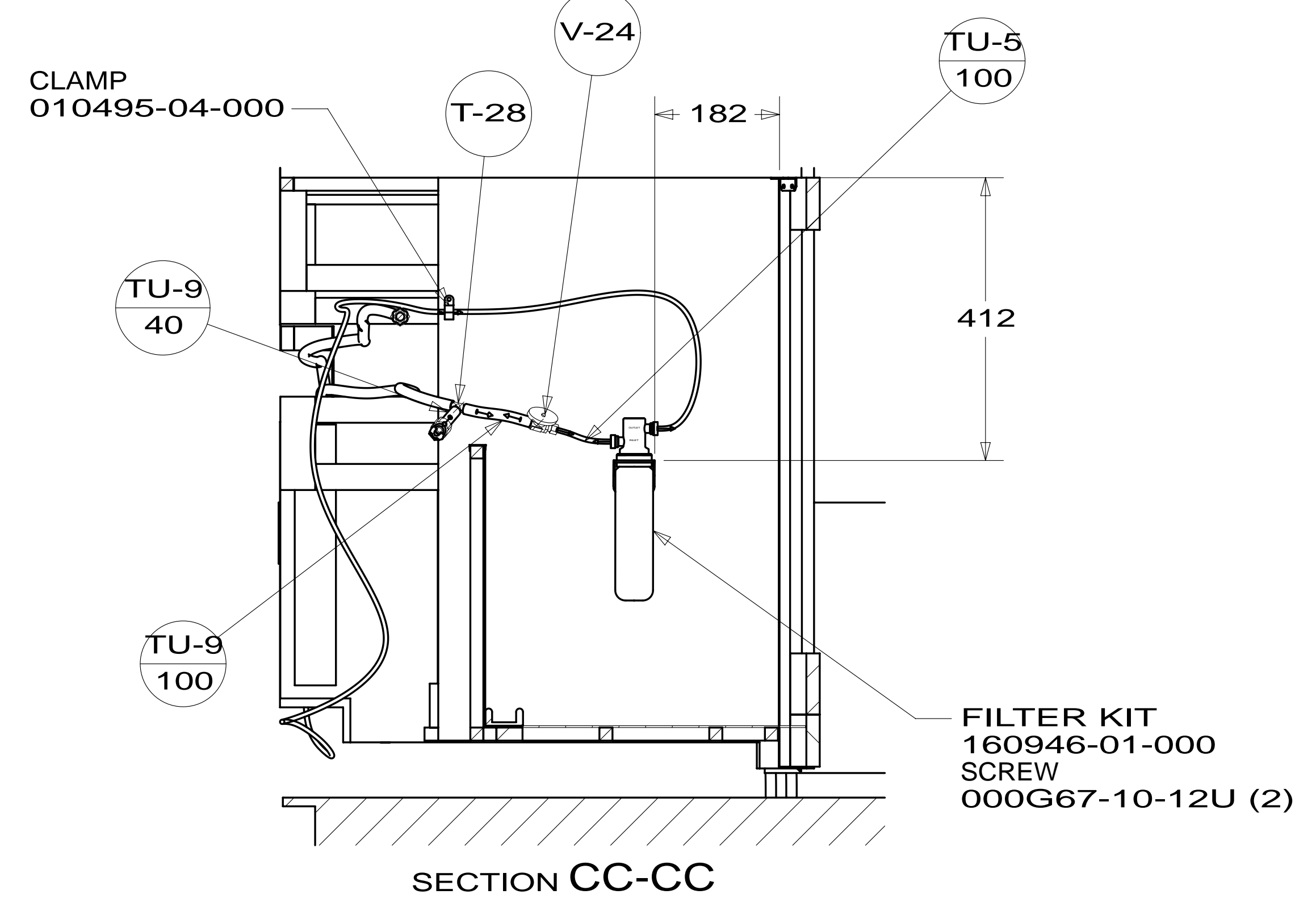
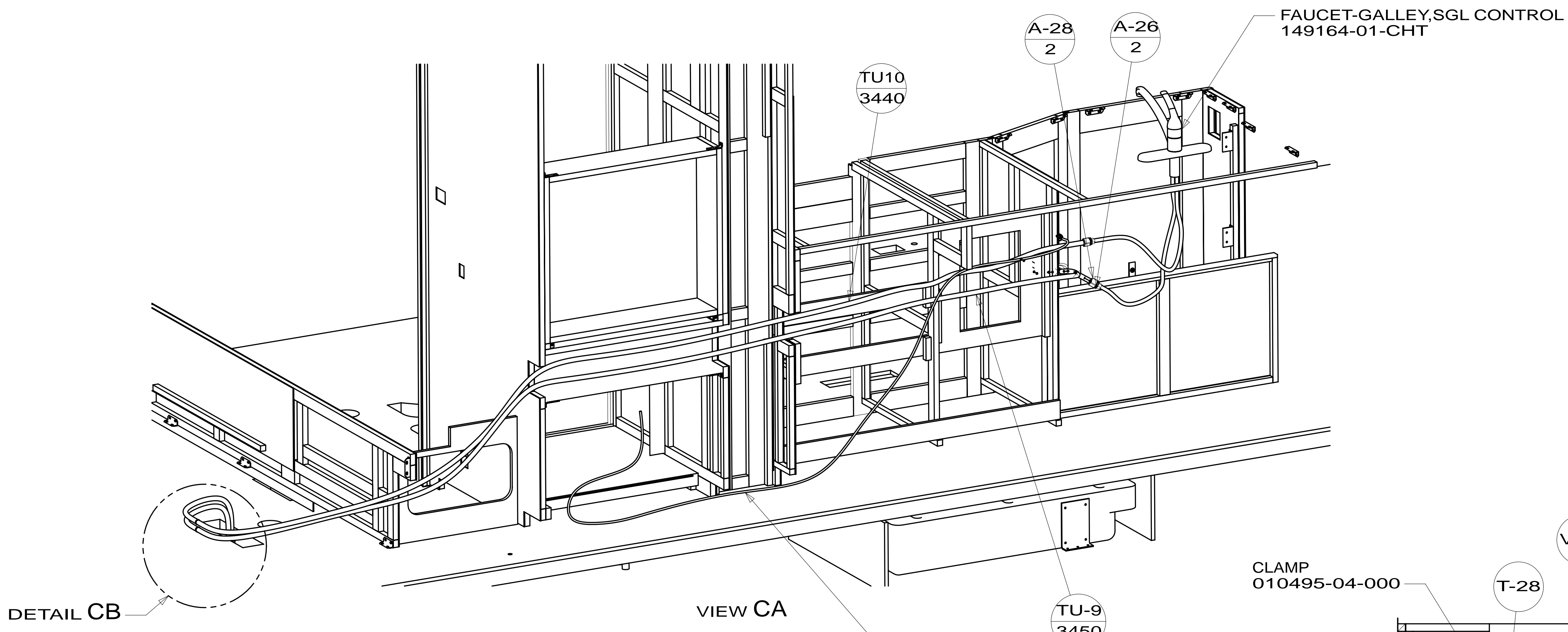


* 186268 * A



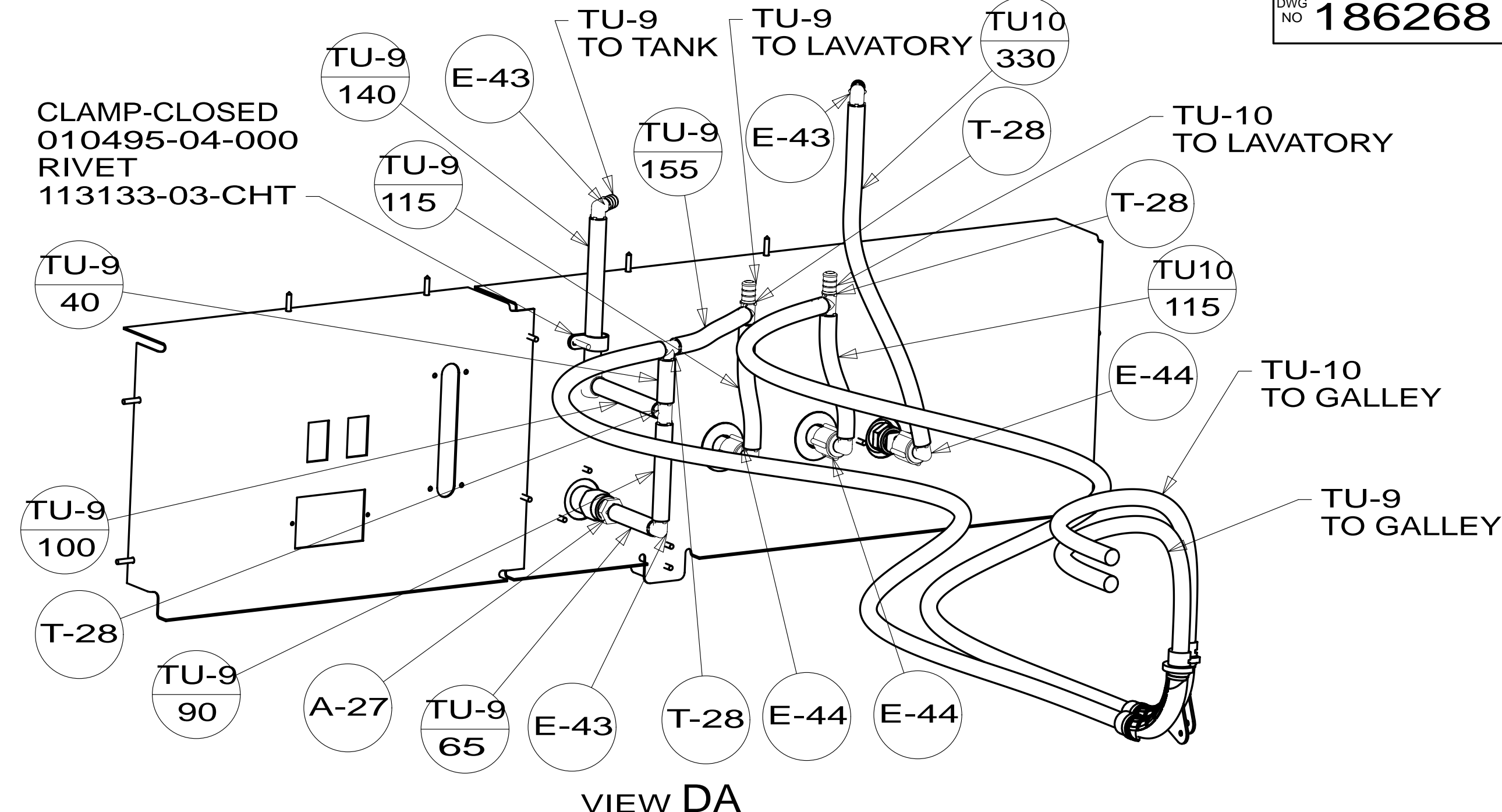
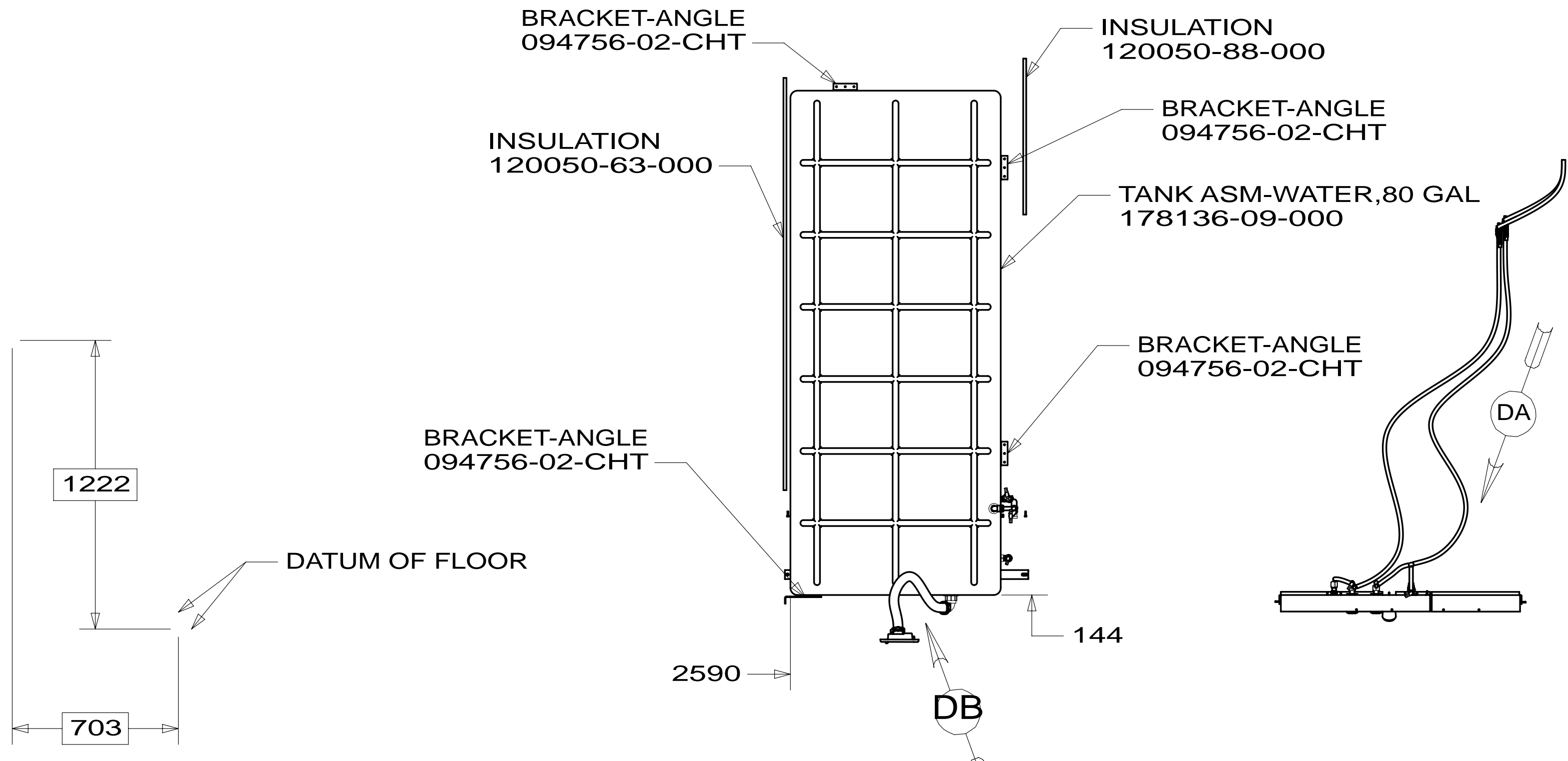
FIRST USED	14 D30A	
DO NOT SCALE DRAWING		
TITLE:	WATER SYSTEM INSTL	
SHEET 2	PART NO	186268
		REV
		02-Jun-2014

* 186268

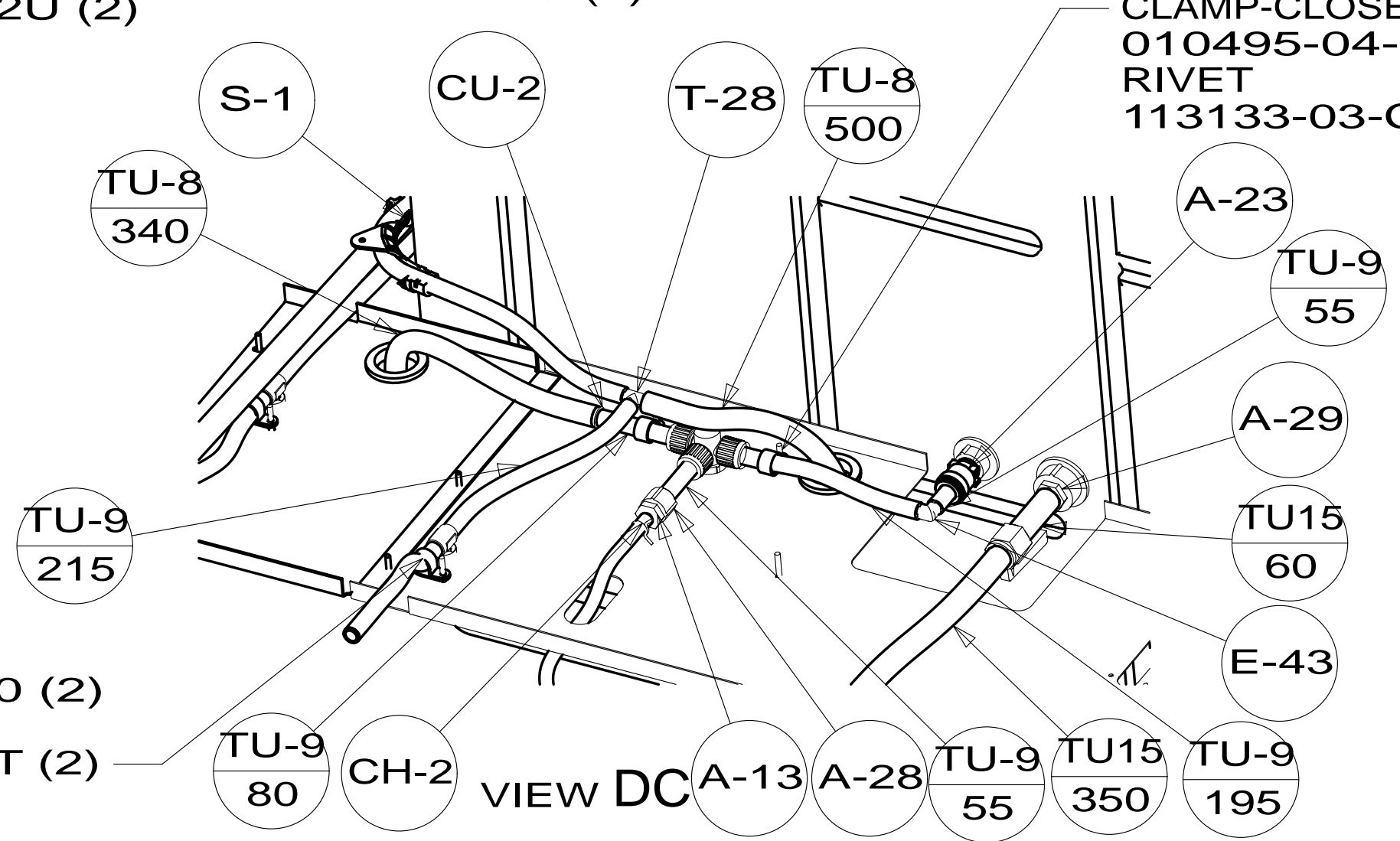
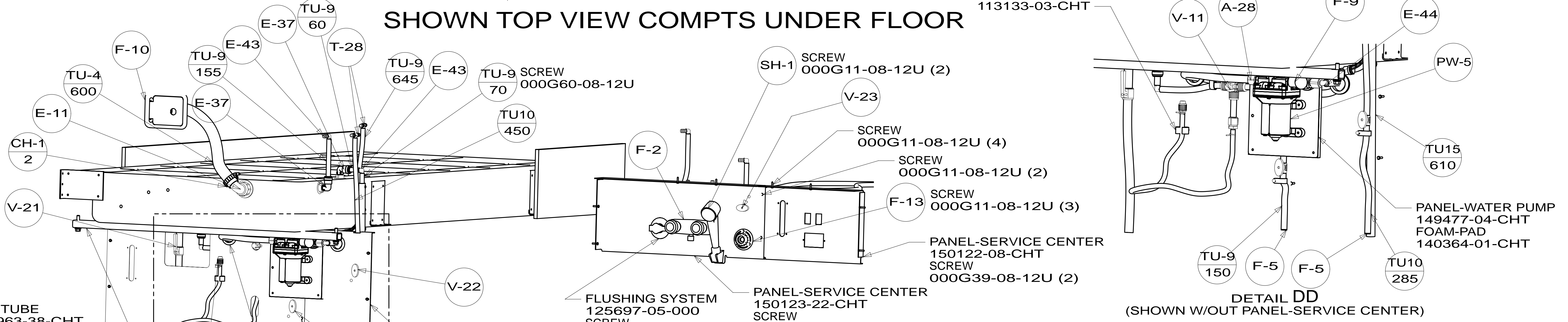


FIRST USED	14 D30A		
TITLE:	DO NOT SCALE DRAWING		
TITLE:	WATER SYSTEM INSTL		
SHEET 3	PART NO	186268	REV
			02-Jun-2014

* 186268



SHOWN TOP VIEW COMPTS UNDER FLOOR



FIRST USED	14 D30A		
TITLE:	DO NOT SCALE DRAWING		
	WATER SYSTEM INSTL		
SHEET 4	PART NO	186268	REV
			02-Jun-2014

* 186268