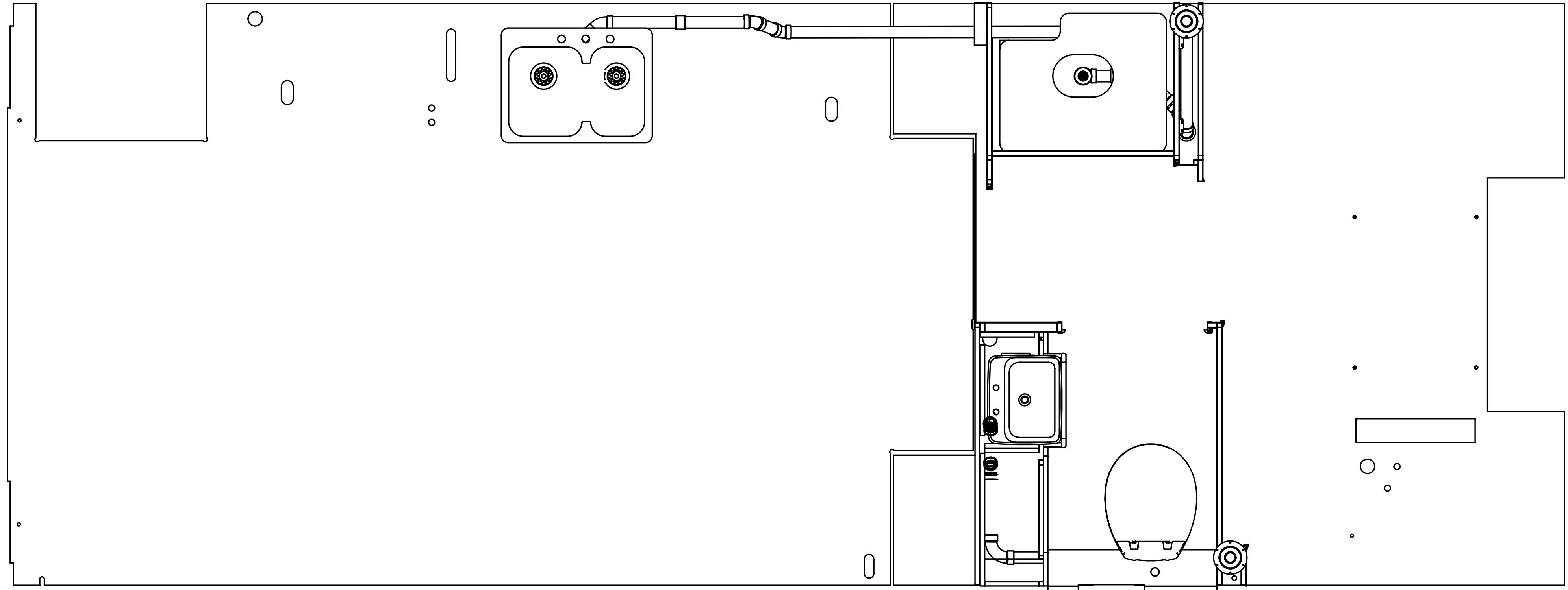


8		7		6		5	
DWG NO	MODEL	TANK-HOLDING	DETAIL CB OR CC	DETAIL BD OR BC	DETAIL CD OR CE		
183460-01	331K	183786-03-000	CB	BD	CD		
183460-02	331KP	183786-05-000	CC	BC	CE		

RELEASE	REV DATE	DWG NO	183460
REV ZONE	REVISION RECORD	DATE	DFT-ORIG



- 12 CUT PART TO 90mm.
- 11 PREP THE SURFACE PER MANUFACTURERS INSTRUCTIONS BEFORE APPLYING THE HEATING PAD.
- 10 SEE WIRING INSTL-BODY FOR ELECTRICAL CONNECTION.
- 9. SEE DRAWING 061607 FOR INSTALLATION OF GROMMETS.
- 8. SECURE DRAINAGE PIPES TO CABINET USING WIRE TIE 108046-02-000, AND SCREW 000G67-10-12U AT INTERVALS OF NOT OF NOT MORE THAN 4 FEET APART.
- 7 SECURE VENT PIPE TO FLOOR WITH CLAMP 062401-02-000 (2), SCREW 000G67-10-12U (2), BRACKET 136878-01-CHT (2).
- 6 VENT PIPE MUST PROJECT 51 MIN AND 64 MAX ABOVE ROOF FOR PROPER FIT AND FUNCTION. ADD S-1 (116666-01-CHT SEAL-VENT PIPE) AROUND PIPE ON ROOF BEFORE VENT CAP IS INSTALLED.
- 5. SEAL AROUND SHOWER WITH SILICONE.
- 4 USE SMOOTH PLUMBERS PUTTY 167459-01-000 TO SEAL STRAINER (0.2 PER STRAINER).
- 3. ALL PIPE AND FITTINGS TO BE ASSEMBLED WITH SOLVENT 004020-01-000 (USA), 004020-02-000 (CAN)
- 2. SLOPE OF TRAP ARM MUST BE 6 PER 305 mm.
- 1. SLOPE OF HORIZONTAL PIPING TO BE MINIMUM OF 3 PER 305 mm.

- 265 CODES/STANDARDS-CSA/CMVSS
- 23T DRAINAGE SYSTEM-HEATED
- 1B1 CODES/STANDARDS USA

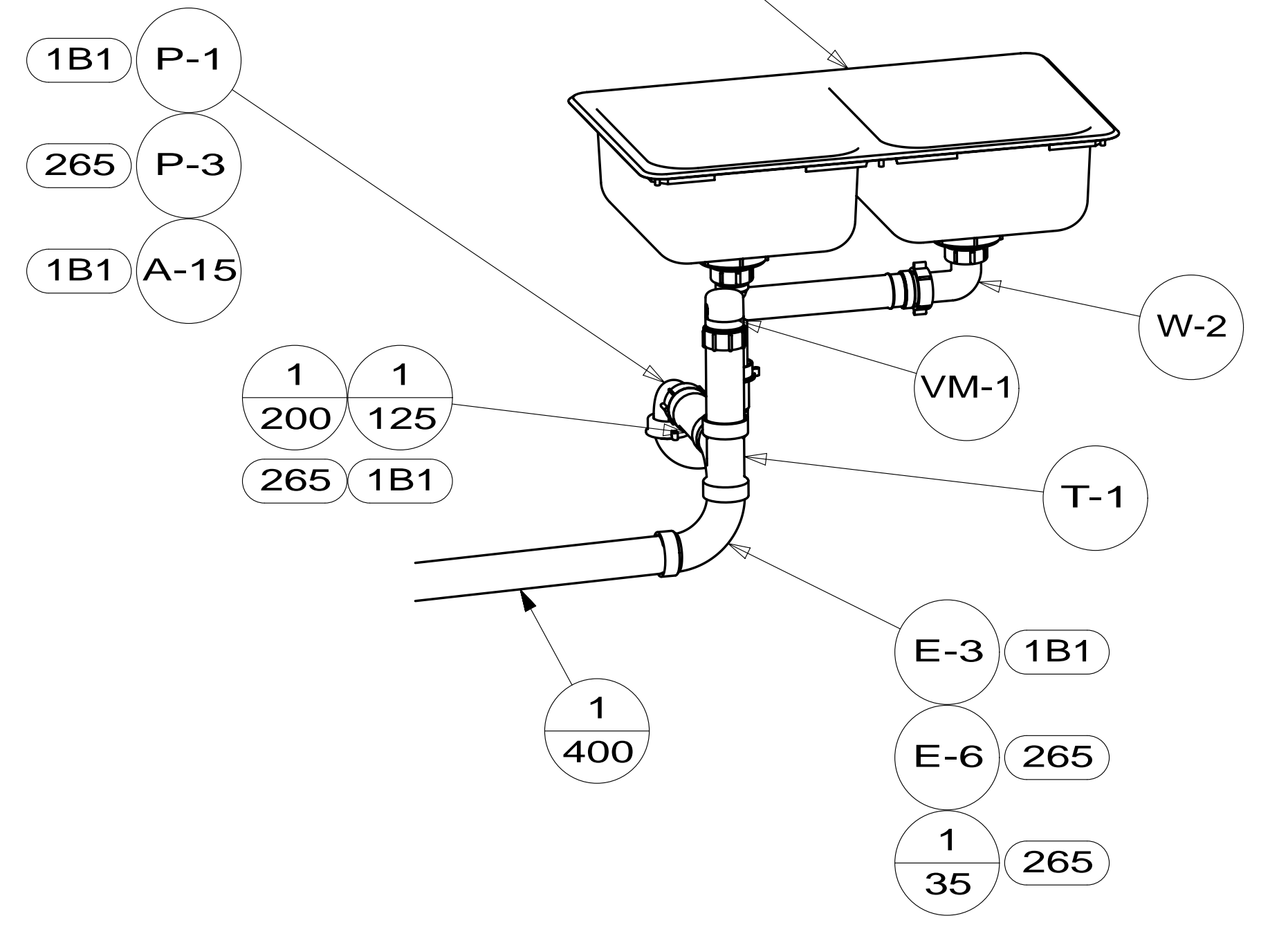
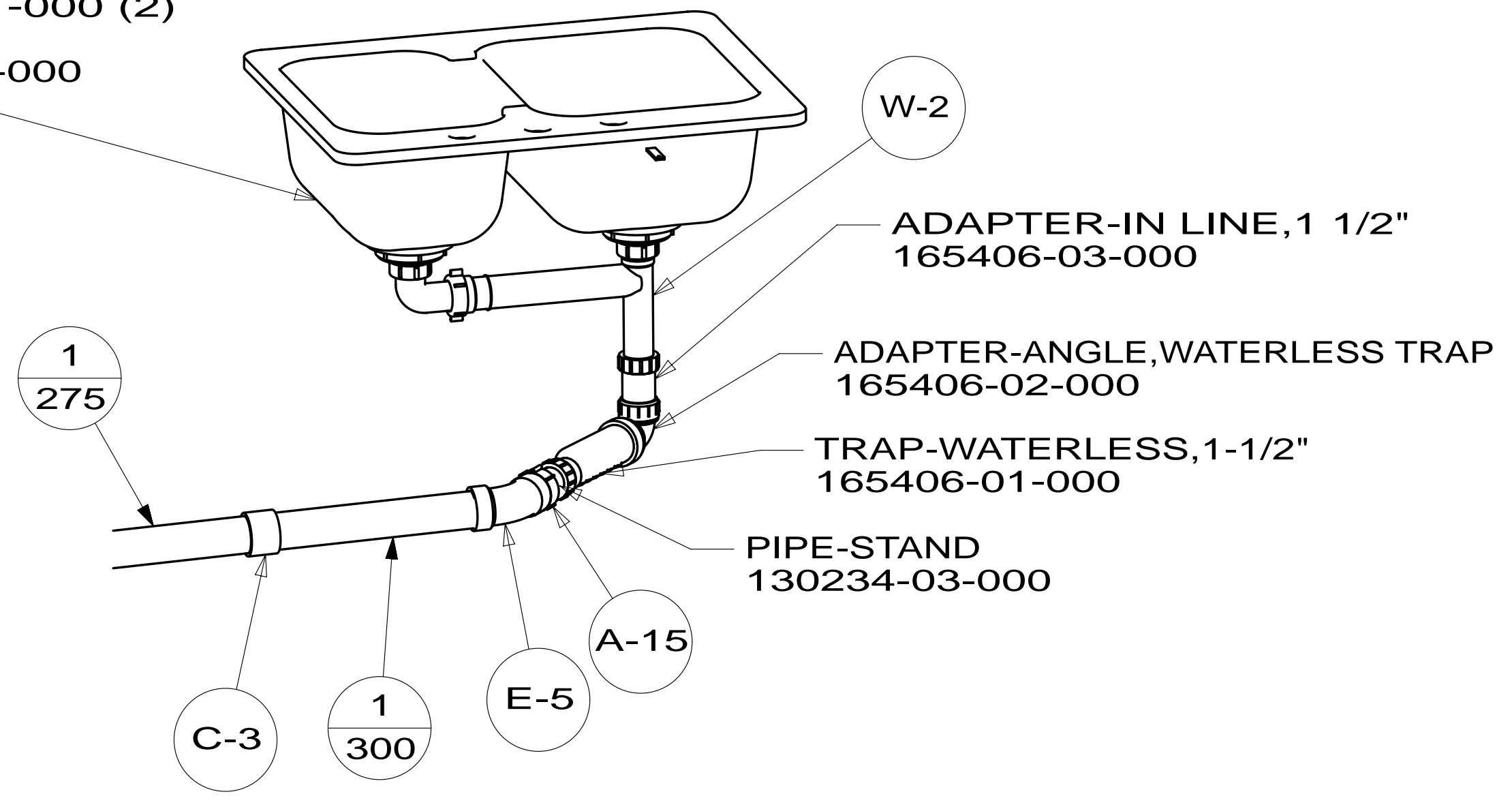
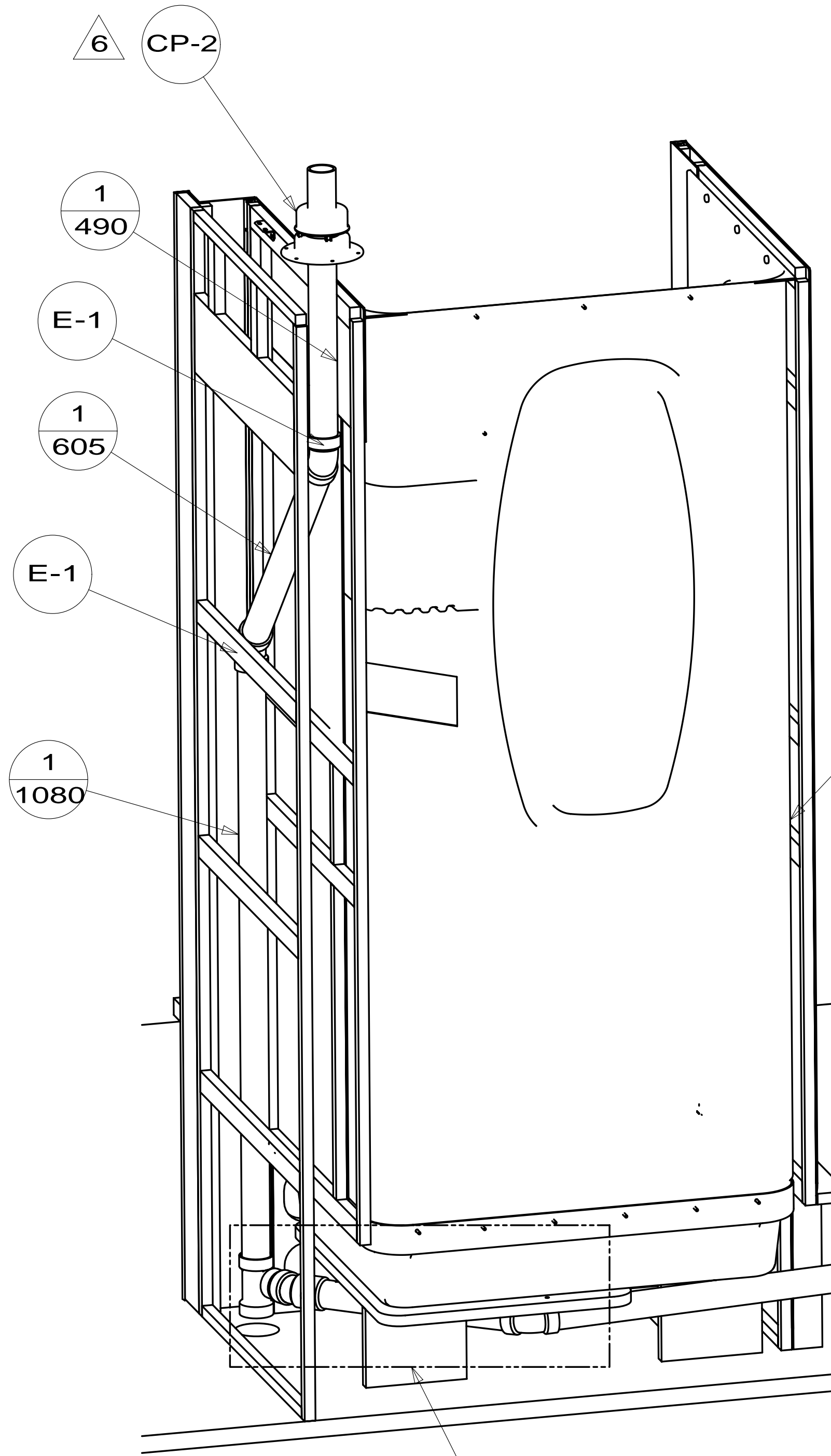
WINNEBAGO		COPYRIGHT 2014 WINNEBAGO INDUSTRIES, INC.	
DFT-ORIG	ORIG. DATE	ALL DIMENSIONS ARE IN MILLIMETERS	
CHKR			
P.E.			
M.E.	FIRST USED	14 331K	
DSNR			
UNSPECIFIED TOLERANCES ARE:		MATERIAL:	
WHOLE DIM (X)	: 3		
ONE-PLACE (X.X)	: 1.5		
TWO-PLACE (X.XX)	: 0.50		
ANGLE	: 1°		
THIRD ANGLE PROJECTION			
DO NOT SCALE DRAWING		REFER TO ES0018 FOR FASTENER TIGHTENING GUIDELINES	
TITLE: DRAINAGE SYSTEM INSTL			
SHEET 1 OF 4	PART NO	183460	REV
REF:	1	24-Apr-2014	

FOR DRAINAGE CALLOUTS SEE DWG NO 116229-01-000

* 183460 * A

SINK
163942-03-CHT
STRAINER
092303-01-000 (2)
SEAL
091255-03-000
(2130)

SINK
179864-01-CHT
STRAINER
092303-01-000 (2)
SEAL
091255-03-000
(2130)

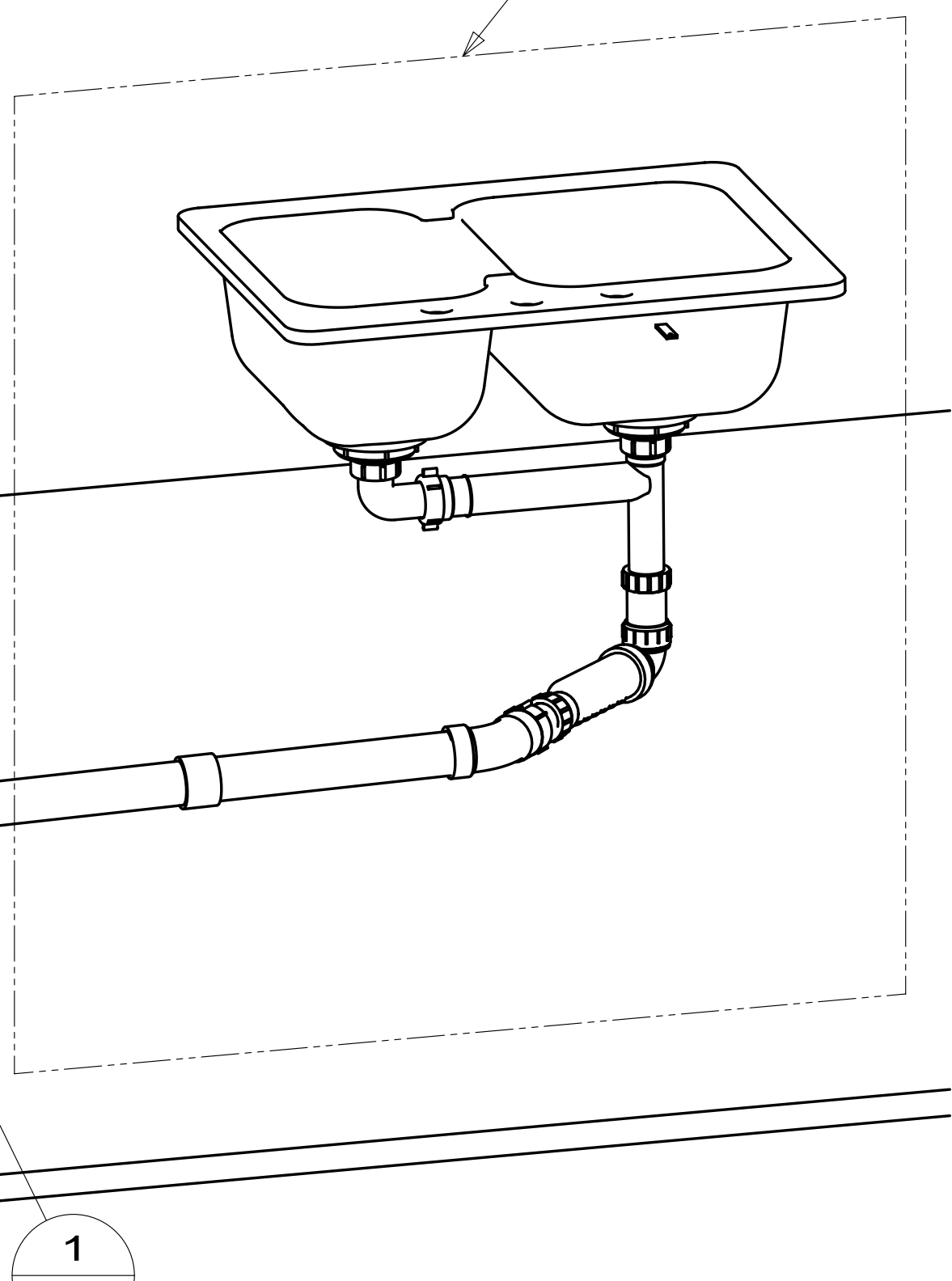


DETAIL BD
(SEE TAB)

DETAIL BD OR BC
(SEE TAB)

DETAIL BC
(SEE TAB)

SHOWER INSTL-ENCLOSURE
147936-05-000



DETAIL BB
(SHOWN W/OUT SHOWER & CABINETS)

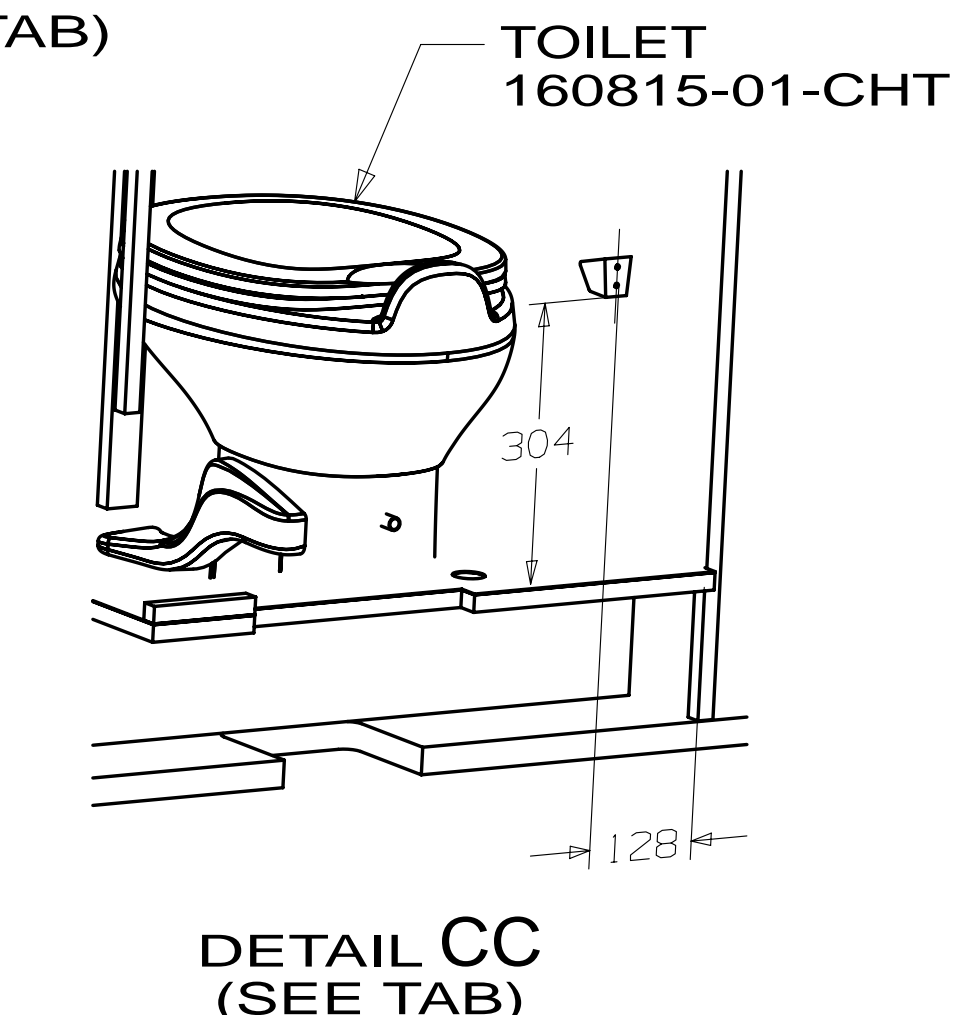
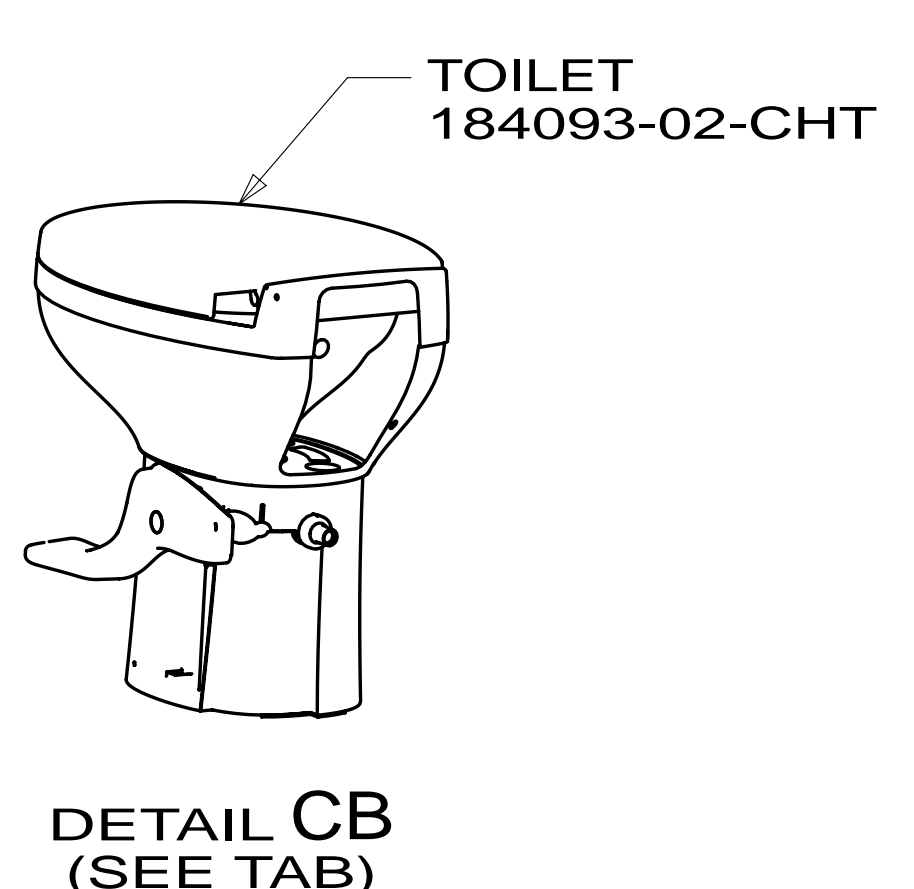
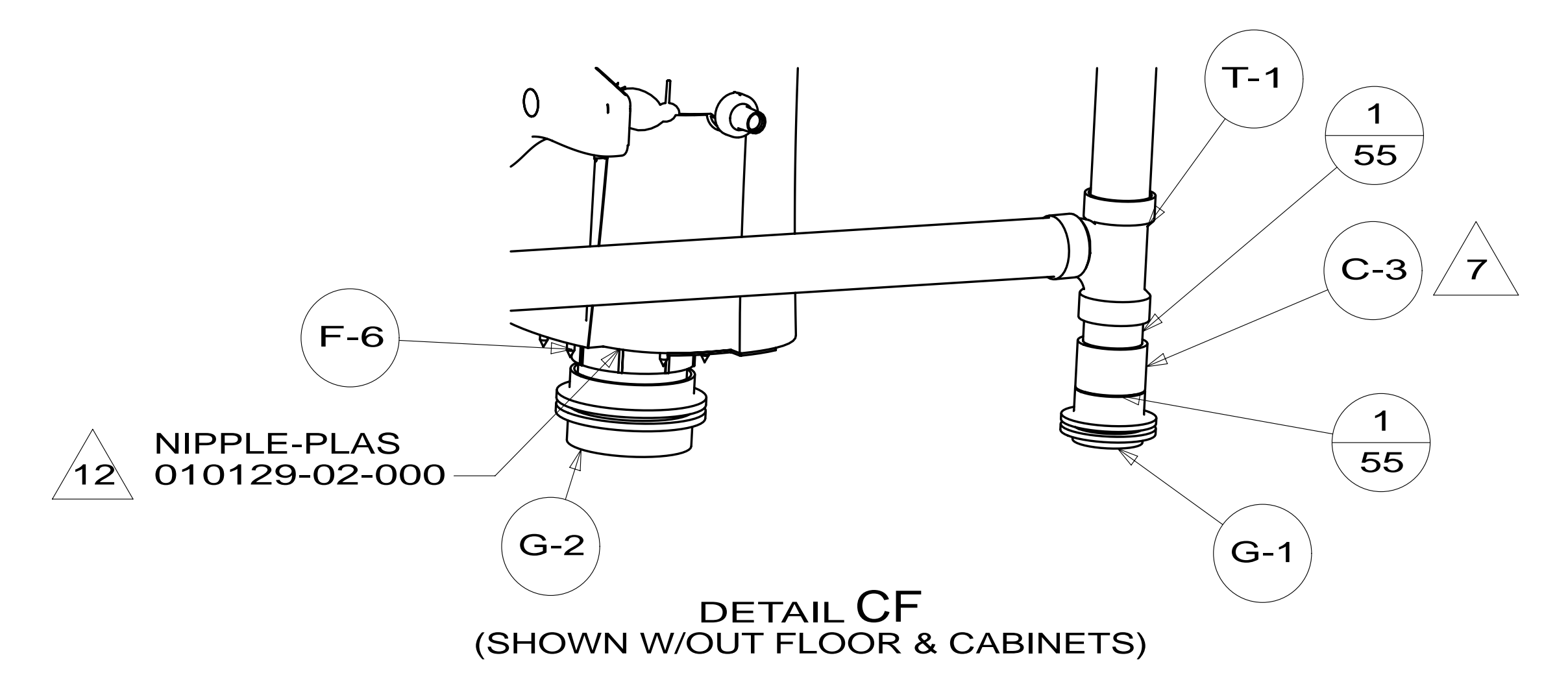
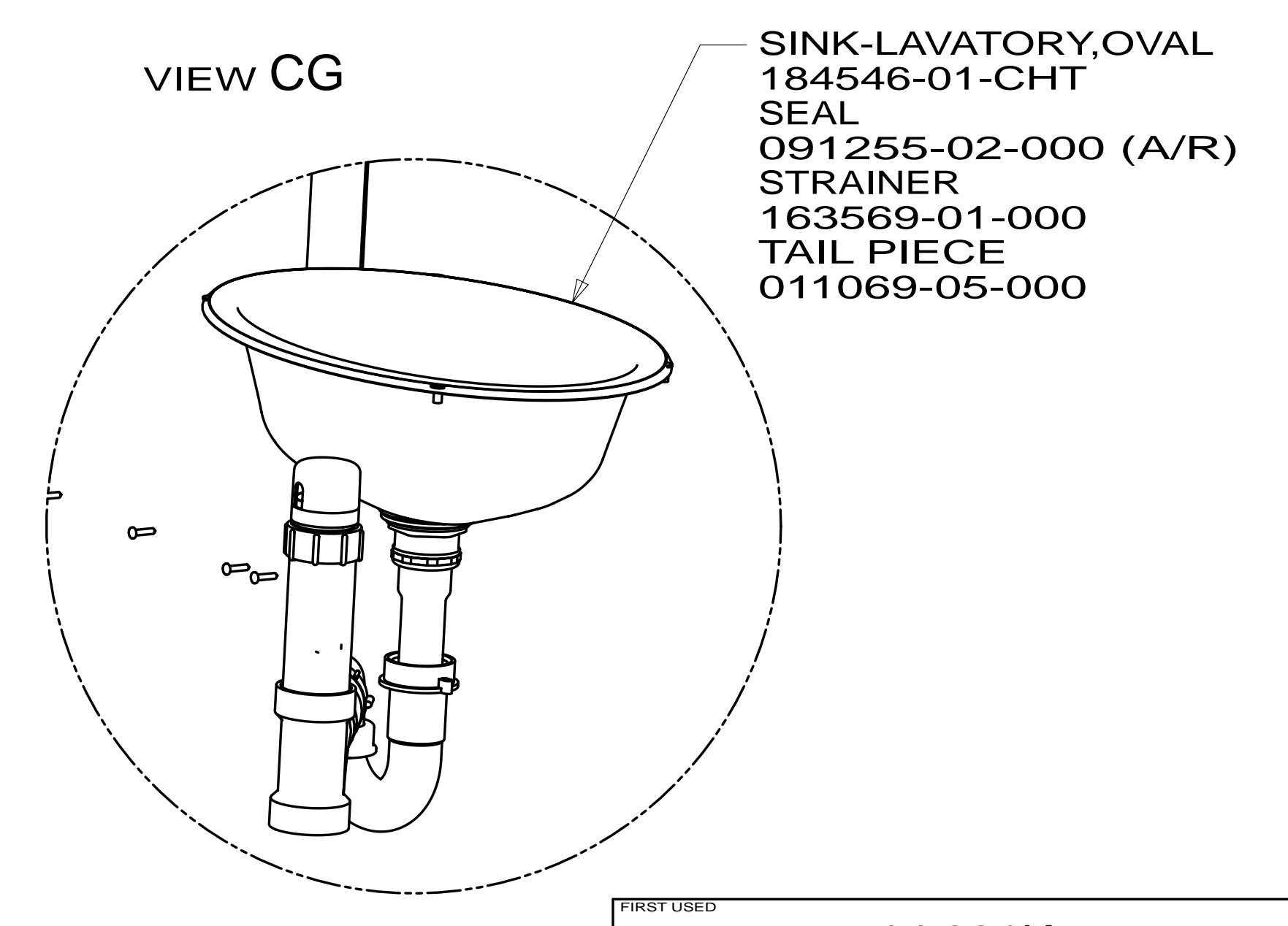
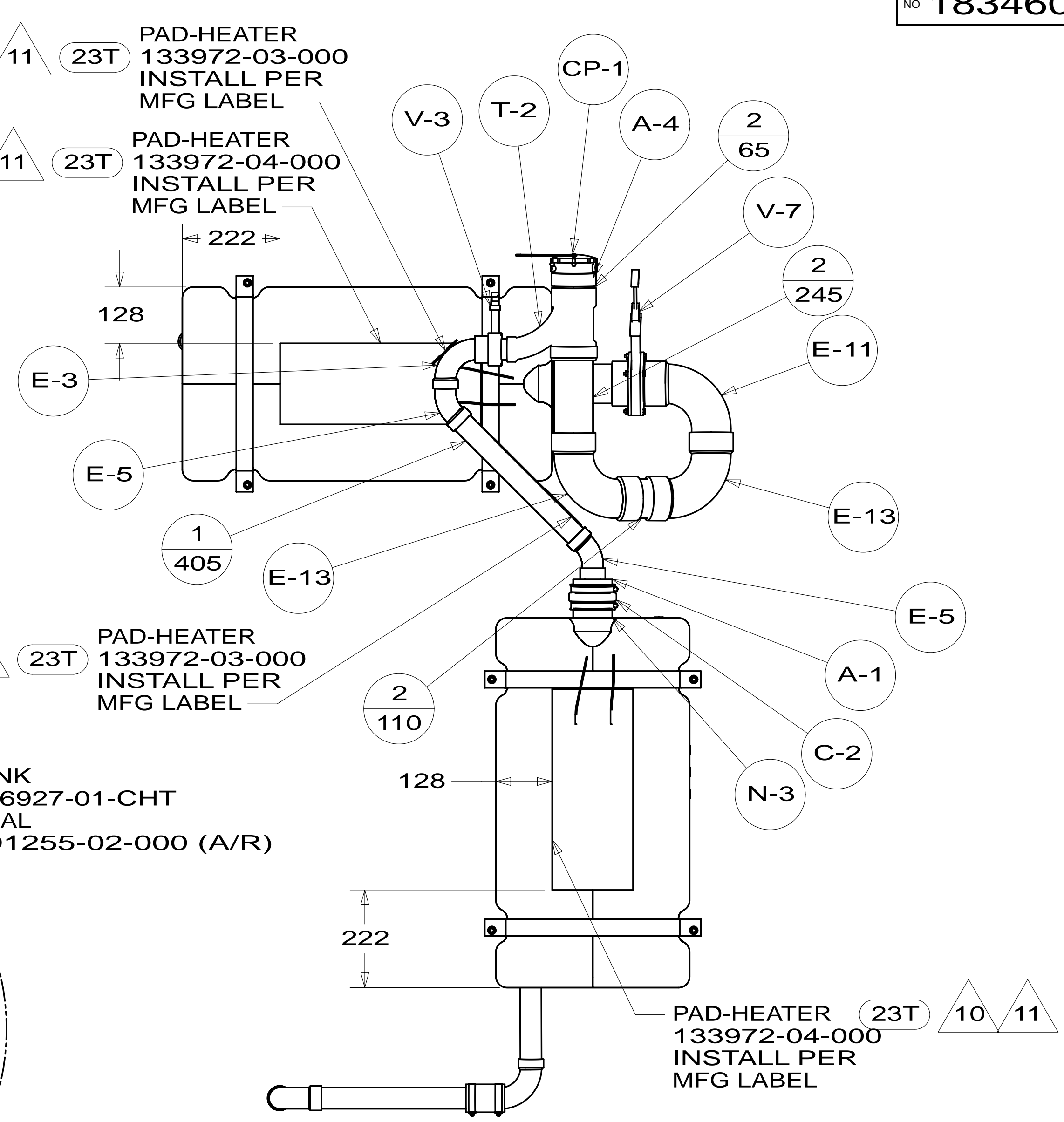
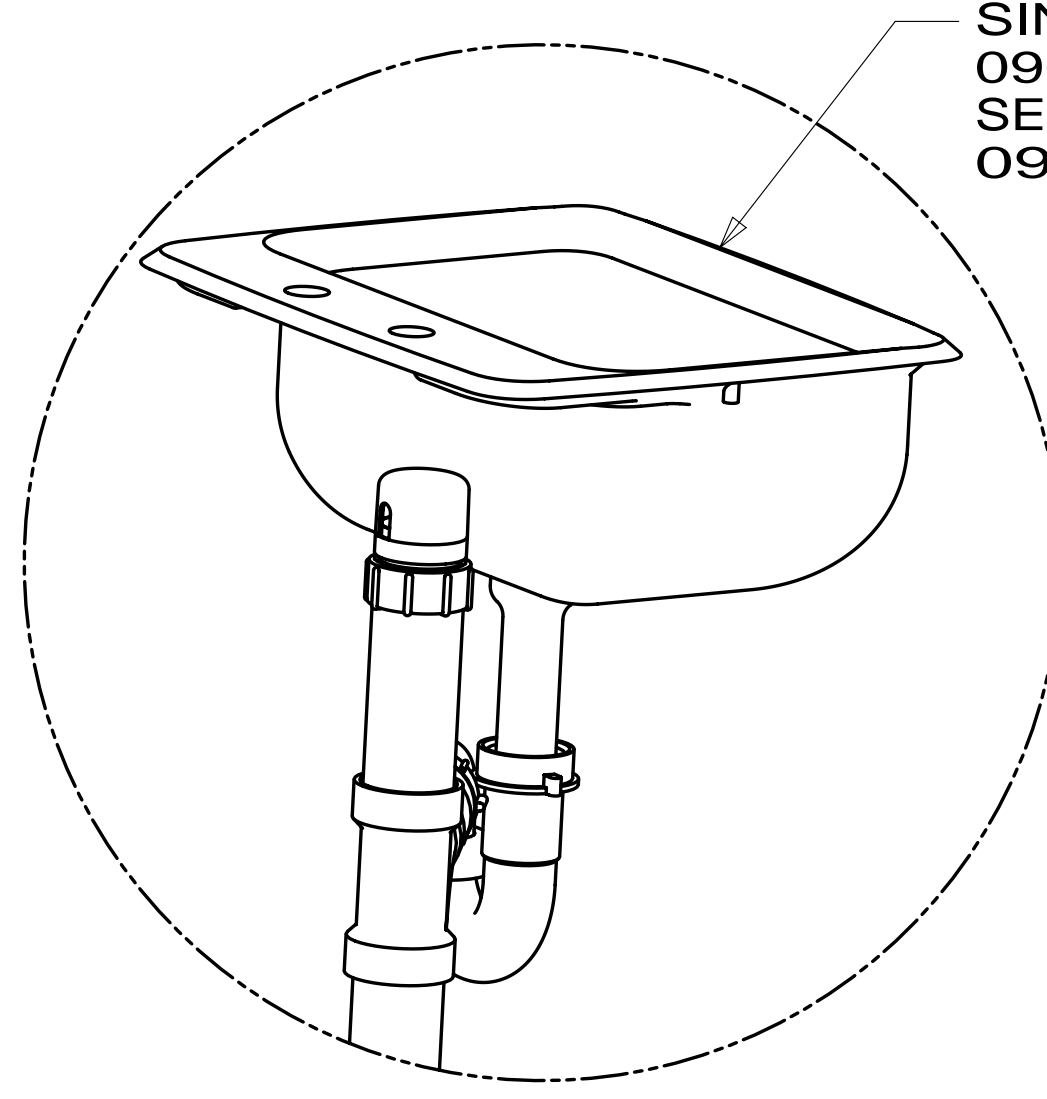
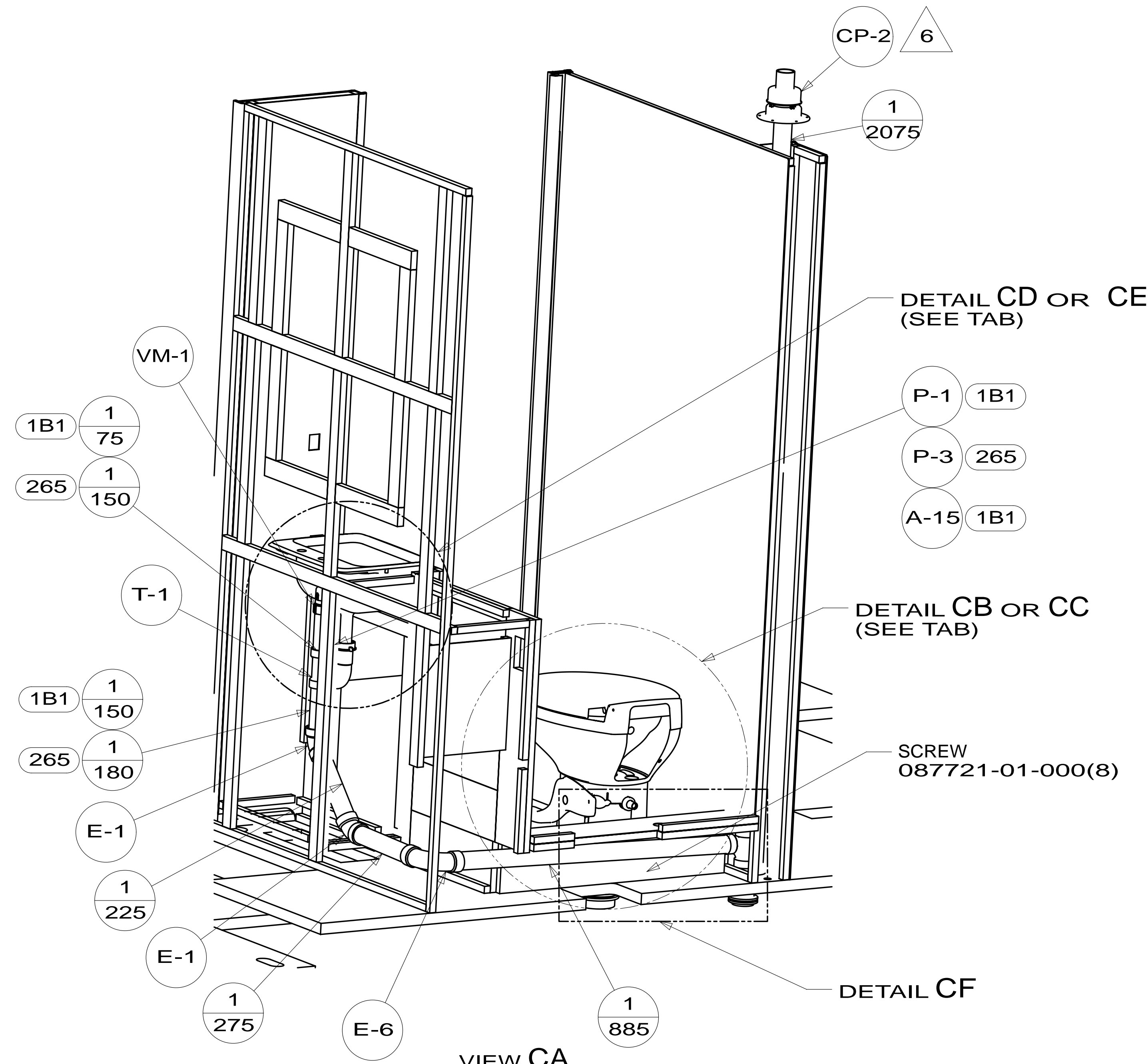
STRAINER
066440-01-000
SEALER
069640-01-000
ELBOW-DRAIN
131486-01-000
WASHER-RUBBER
127440-02-CHT

DETAIL BB

VIEW BA

FIRST USED	14 331K	
TITLE:	DO NOT SCALE DRAWING	
TITLE:	DRAINAGE SYSTEM INSTL	
SHEET 2	PART NO 183460	REV

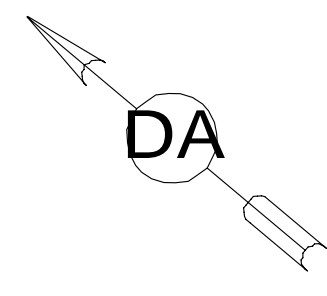
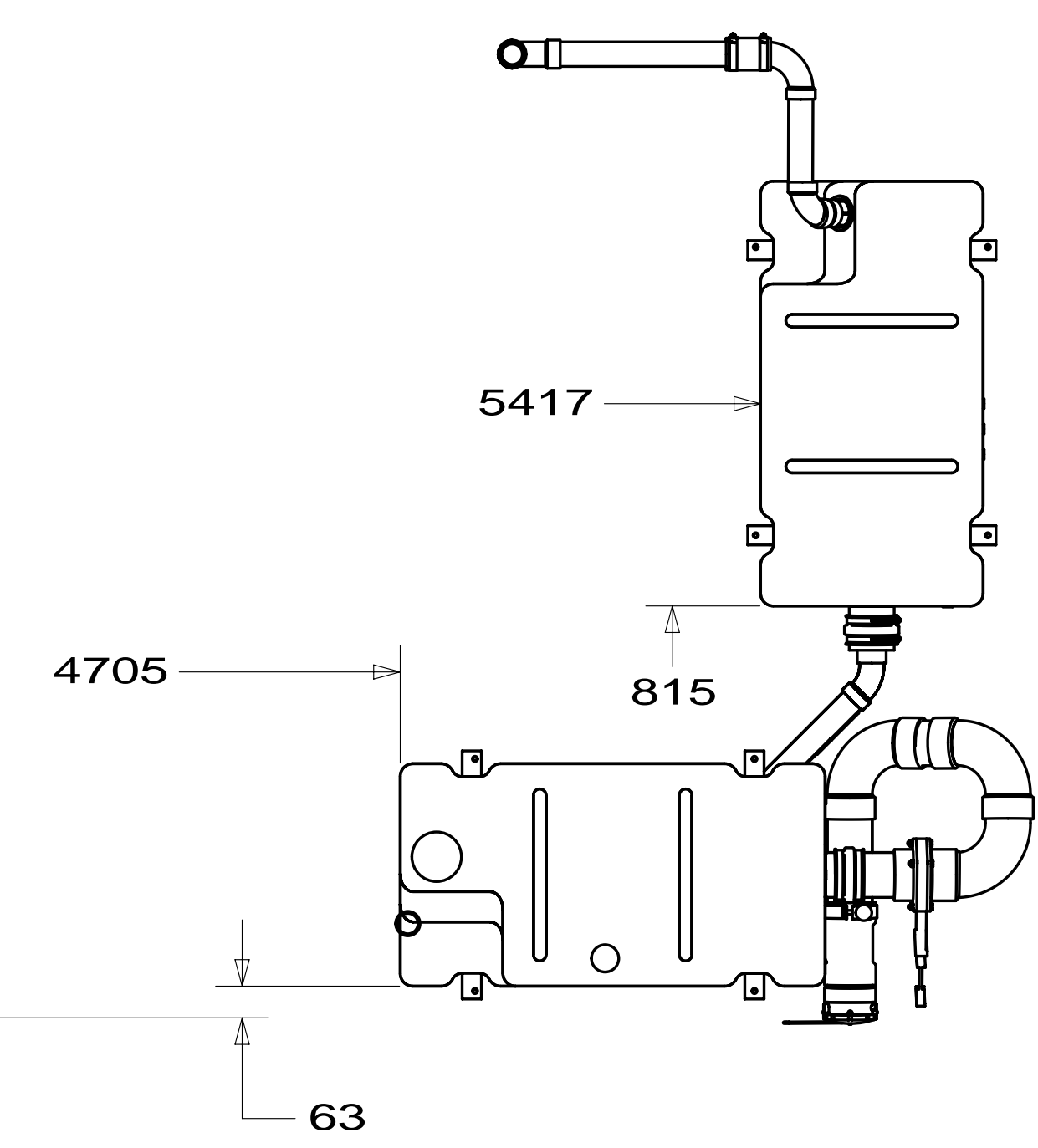
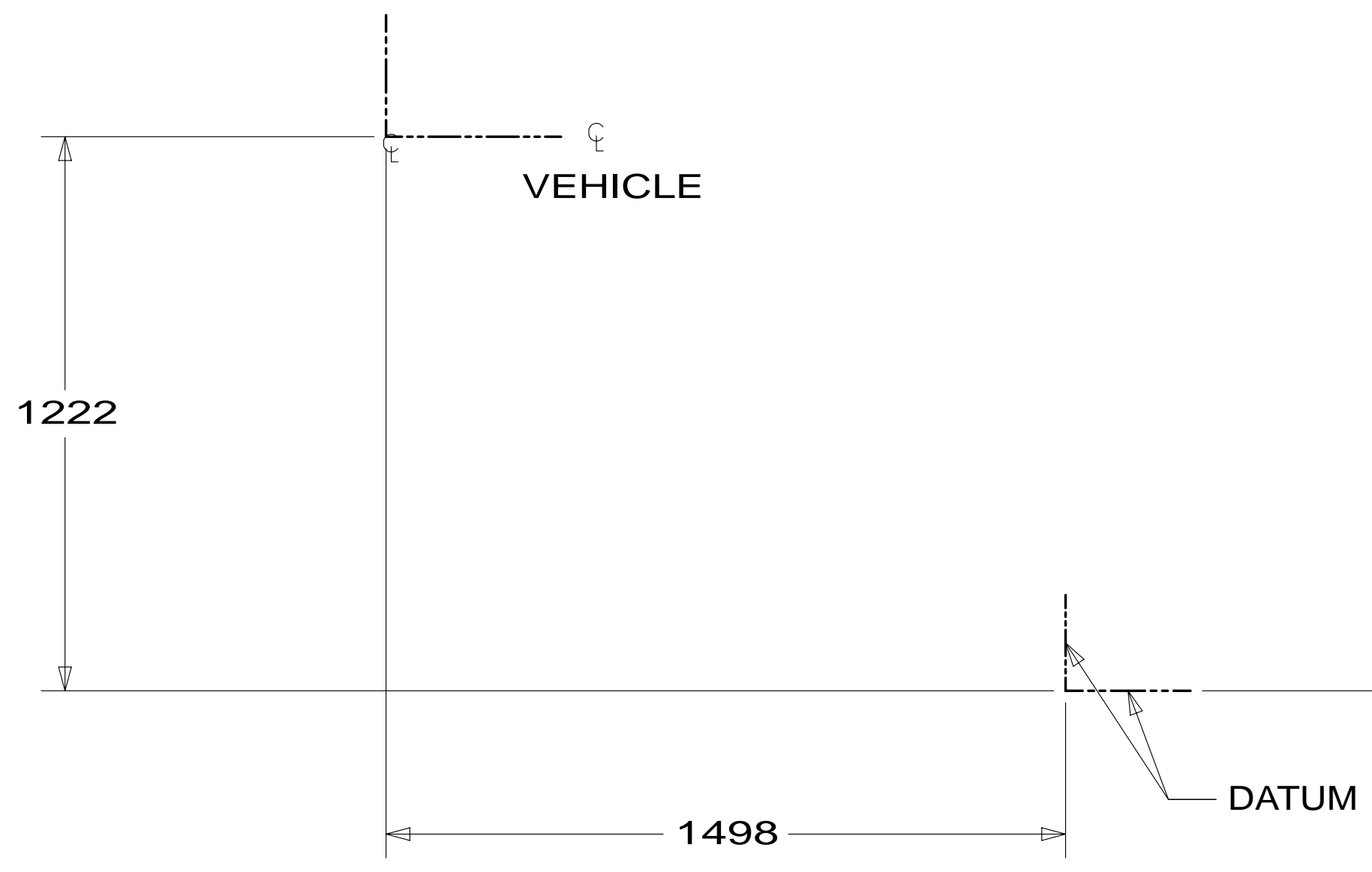
* 183460 * A



FIRST USED	14 331K	
DO NOT SCALE DRAWING		
TITLE: DRAINAGE SYSTEM INSTL		
SHEET 3	PART NO 183460	REV
		1 24-Apr-2014

* 183460 * A

FRONT AXLE
VEHICLE



HANGER-STRAP
140220-22-CHT
BOLT
000C18-05-40U
NUT
000D39-05-00U
HOLDER-RING
141443-03-CHT
BOLT
000C26-05-16U
NUT
000D39-05-00U

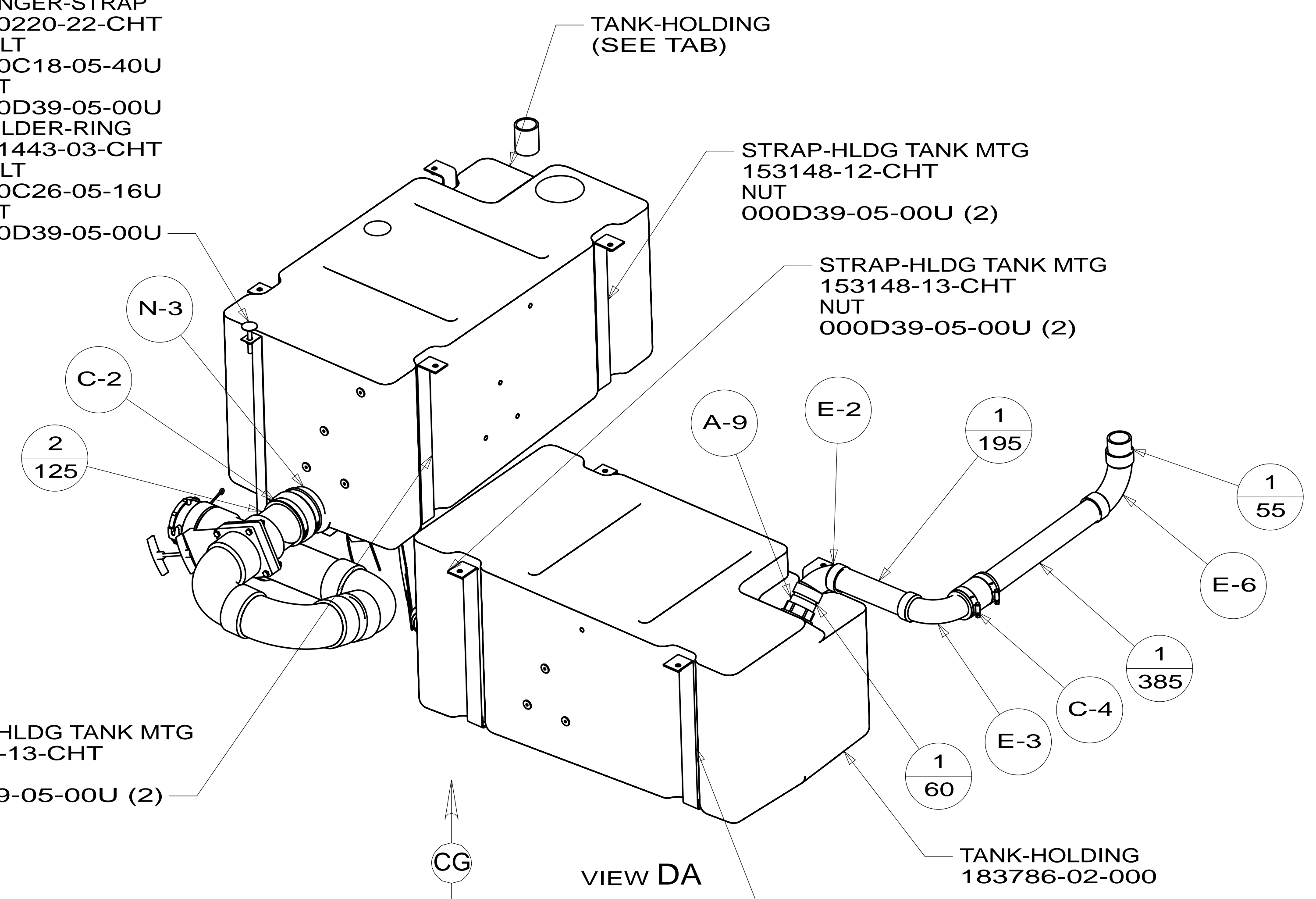
TANK-HOLDING
(SEE TAB)

STRAP-HLDG TANK MTG
153148-12-CHT
NUT
000D39-05-00U (2)

STRAP-HLDG TANK MTG
153148-13-CHT
NUT
000D39-05-00U (2)

STRAP-HLDG TANK MTG
153148-13-CHT
NUT
000D39-05-00U (2)

STRAP-HLDG TANK MTG
153148-12-CHT
NUT
000D39-05-00U (2)



VIEW DA

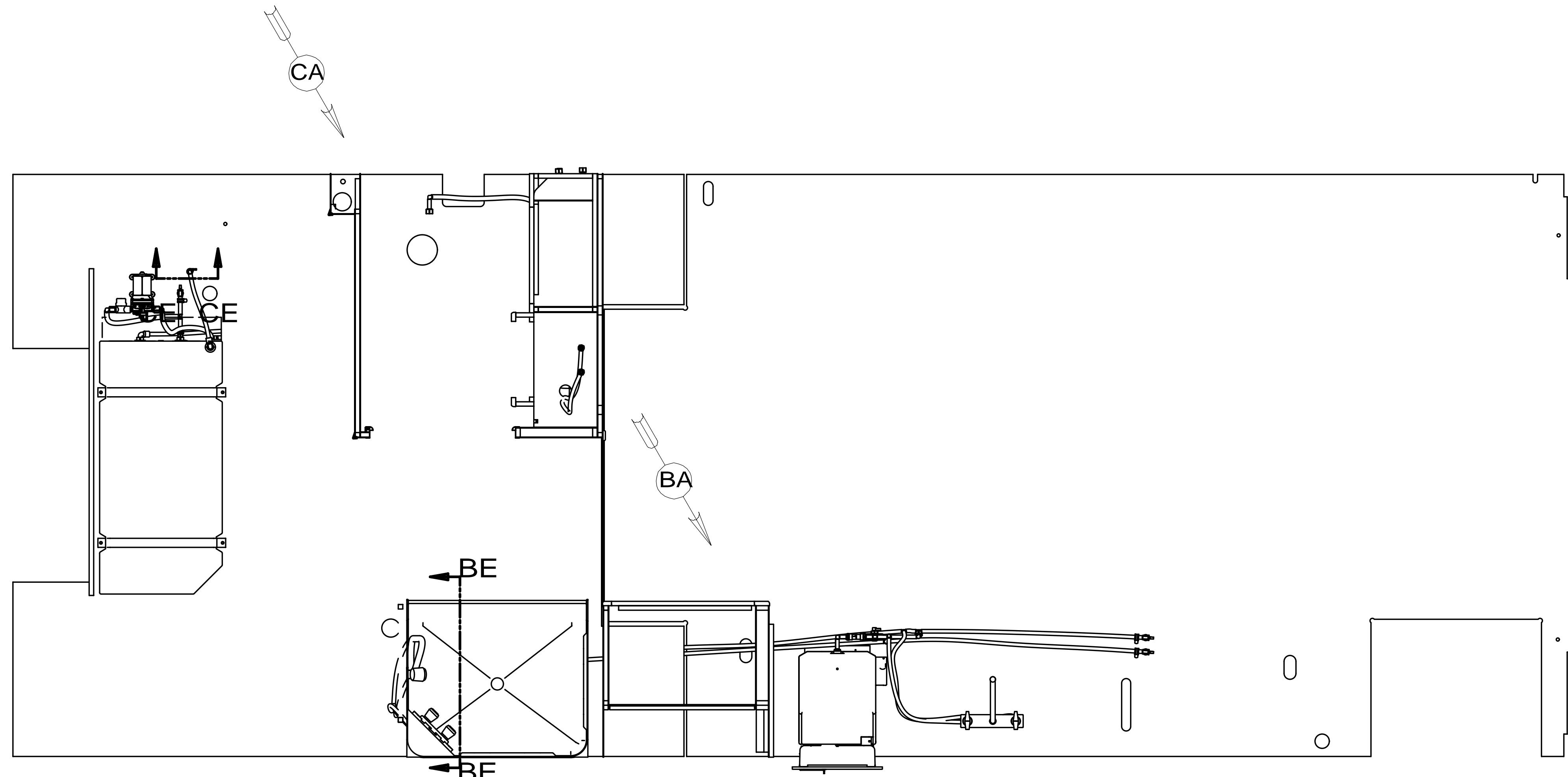
TANK-HOLDING
183786-02-000

FIRST USED	14 331K	
TITLE:	DO NOT SCALE DRAWING	
TITLE:	DRAINAGE SYSTEM INSTL	
SHEET 4	PART NO 183460	REV
		1 24-Apr-2014

* 183460 * A

DWG NO	MODEL	BF OR BG	CG OR CH	DETAIL CF
183461-01	331K	BF	CG	NO
183461-02	331KP	BG	CH	YES

RELEASE	REV DATE	DWG NO	183461
REV ZONE	REVISION RECORD	DATE	DFT-ORIG



9 FASTEN PLATFORM TO FLOOR AFTER SIDEWALL IS SET AND HEATER IS ATTACHED TO WALL.

8. ALL CRIMP FITTINGS TO 1/2" PEX TUBING REQUIRE 1/2" CLAMP 140171-03-000.

7. ALL CRIMP FITTINGS TO 5/8" PEX TUBING REQUIRE 5/8" CLAMP 140171-04-000.

6 LABEL HOT AND COLD SUPPLY TUBES AND TAPE FITTING TO TUBE BEFORE CABINET SET TO PREVENT MOVEMENT.

5 ADD PIPE WRAP (LADDER SCRAP 110157-02-000) INSULATION.

4 ADD TEFLON TAPE 010405-02-000.

3. ALL TUBING TO BE SECURED AT 1200 INTERVALS MAXIMUM WITH CLAMP 010495-01-000 AND SCREW 000G67-10-12U OR EQUIVALENT.

2. TUBING TO BE INSTALLED WITH SUFFICIENT SLOPE TO PROVIDE DRAINAGE TO NEAREST VALVE.

1. PLASTIC FITTINGS TO BE SEALED WITH SEALANT 084456-01-000.

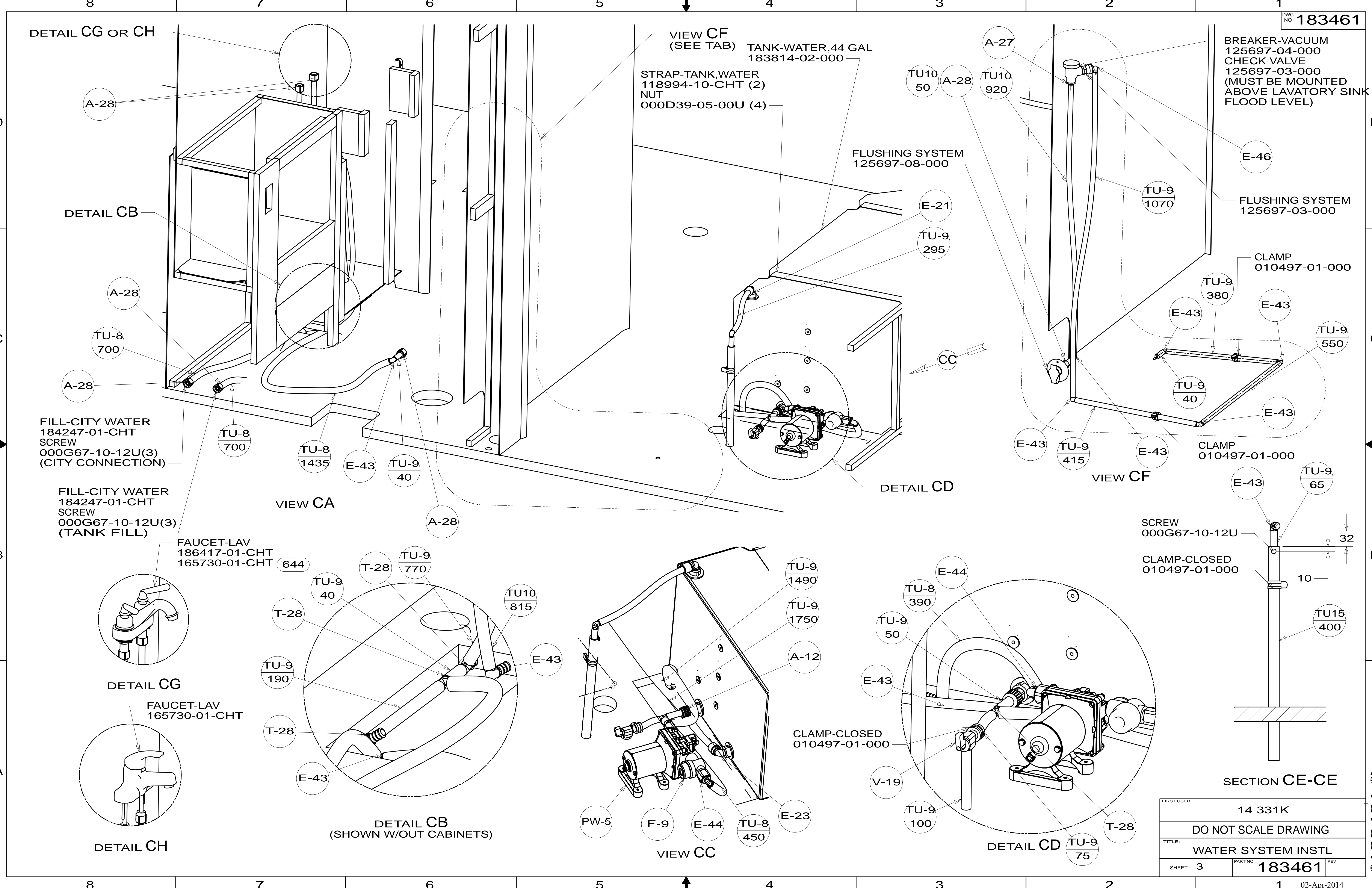
NOTES:

644 GREAT ALASKAN RENTAL PACKAGE

		COPYRIGHT 2014 WINNEBAGO INDUSTRIES, INC.	
DFT-ORIG	ORIG. DATE	ALL DIMENSIONS ARE IN MILLIMETERS	
CHKR			
P.E.			
M.E.	FIRST USED	14 331K	
DSNR			
UNSPECIFIED TOLERANCES ARE:		MATERIAL:	
WHOLE DIM (X)	: 3		
ONE-PLACE (X.X)	: 1.5		
TWO-PLACE (X.XX)	: 0.50		
ANGLE	: 1°		
THIRD ANGLE PROJECTION			
DO NOT SCALE DRAWING		REFER TO ES0018 FOR FASTENER TIGHTENING GUIDELINES	
TITLE: WATER SYSTEM INSTL			
SHEET 1 OF 3	PART NO	183461	REV
REF:	1	02-Apr-2014	

FOR WATER CALLOUTS SEE DWG NO 116230-01-000

* 183461 * A



VIEW CF
(SEE TAB) TANK-WATER, 44 GAL
183814-02-000

STRAP-TANK, WATER
118994-10-CHT (2)
NUT
000D39-05-00U (4)

FLUSHING SYSTEM
125697-08-000

BREAKER-VACUUM
125697-04-000
CHECK VALVE
125697-03-000
(MUST BE MOUNTED
ABOVE LAVATORY SINK
FLOOD LEVEL)

FILL-CITY WATER
184247-01-CHT
SCREW
000G67-10-12U(3)
(CITY CONNECTION)

FILL-CITY WATER
184247-01-CHT
SCREW
000G67-10-12U(3)
(TANK FILL)

FAUCET-LAV
186417-01-CHT
165730-01-CHT

DETAIL CG

FAUCET-LAV
165730-01-CHT

DETAIL CH

VIEW CA

DETAIL CD

VIEW CF

SECTION CE-CE

VIEW CC

DETAIL CD

FIRST USED	14 331K
DO NOT SCALE DRAWING	
TITLE:	WATER SYSTEM INSTL
SHEET 3	PART NO 183461 REV