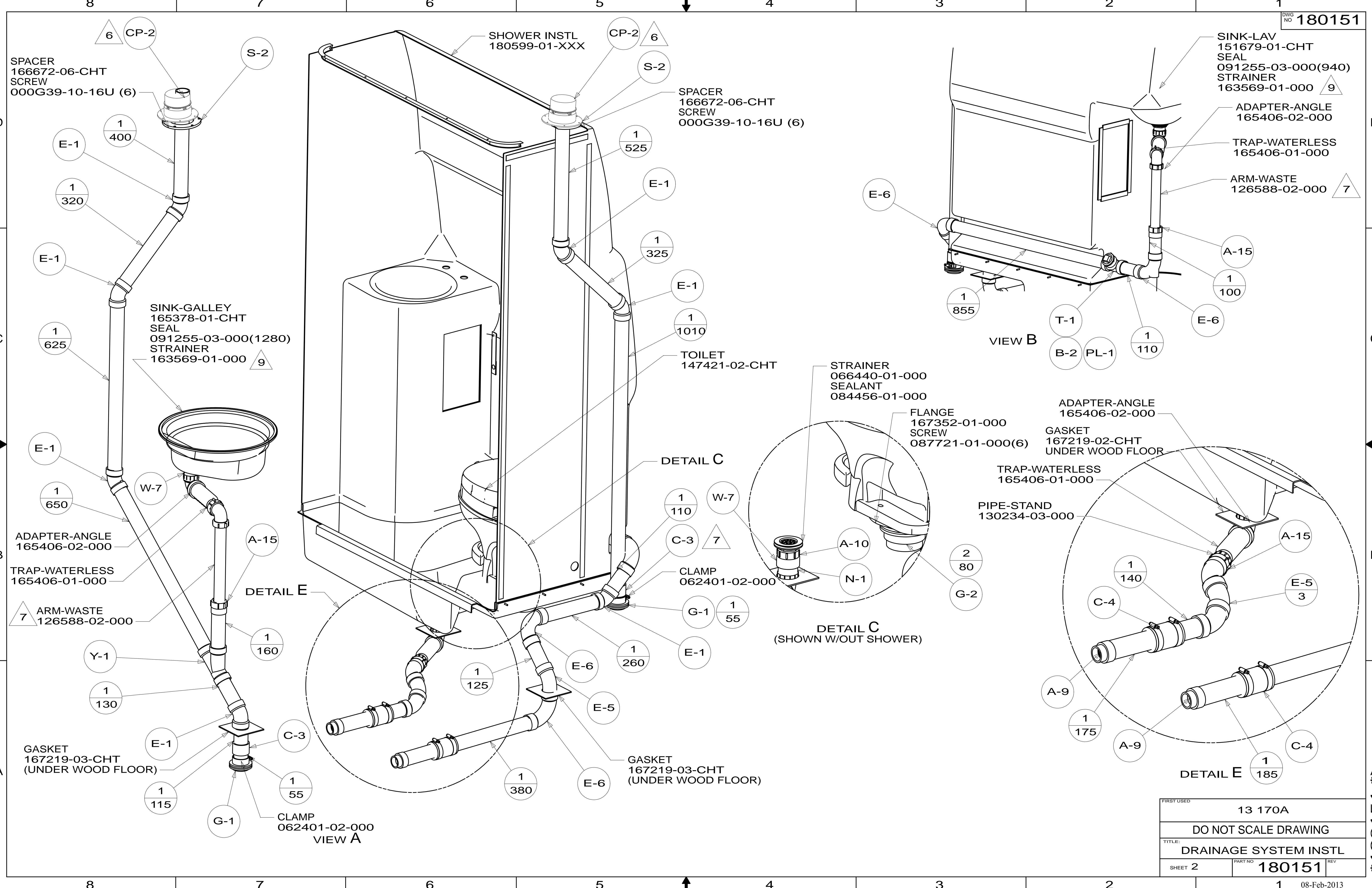


- NOTES:
- 9 USE SMOOTH PLUMBERS PUTTY 167459-01-000 TO SEAL STRAINER (0.2 PER STRAINERS)
 - 8 NIPPLE TO BE TRIMMED TO LENGTH ON INSTALL.
 - 7 TRIM TO FIT.
 - 6 VENT PIPE MUST PROJECT 51 MIN AND 64 MAX ABOVE ROOF FOR PROPER FIT AND FUNCTION.
 5. SEAL AROUND SHOWER WITH SILICONE.
 4. SECURE DRAINAGE PIPES TO CABINET USING WIRE TIE 108046-02-000, AND SCREW 000G67-10-12B AT INTERVALS OF NOT MORE THAN 4 FEET APART.
 3. ALL PIPE AND FITTINGS TO BE ASSEMBLED WITH SOLVENT 004020-01-000 (USA), 004020-02-000 (CAN)
 2. SLOPE OF TRAP ARM MUST BE 6 PER 305 mm.
 1. SLOPE OF HORIZONTAL PIPING TO BE MINIMUM OF 3 PER 305 mm.

FOR DRAINAGE CALLOUTS SEE DWG NO 116229-01-000

WINNEBAGO		COPYRIGHT 2013 WINNEBAGO INDUSTRIES, INC.	
DFTR	ORIG. DATE	ALL DIMENSIONS ARE IN MILLIMETERS	
CHKR			
P.E.			
M.E.	FIRST USED		
DSNR		13 170A	
UNSPECIFIED TOLERANCES ARE:		MATERIAL:	
WHOLE DIM (X)	: 3		
ONE-PLACE (X.X)	: 1.5		
TWO-PLACE (X.XX)	: 0.50		
ANGLE	: 1°		
THIRD ANGLE PROJECTION			
DO NOT SCALE DRAWING		REFER TO ES0018 FOR FASTENER TIGHTENING GUIDELINES	
TITLE: DRAINAGE SYSTEM INSTL			
SHEET 1 OF 4	PART NO	180151	REV
REF:	1	08-Feb-2013	

* 180151 * A



SPACER
166672-06-CHT
SCREW
000G39-10-16U (6)

SINK-GALLEY
165378-01-CHT
SEAL
091255-03-000(1280)
STRAINER
163569-01-000 (9)

GASKET
167219-03-CHT
(UNDER WOOD FLOOR)

SHOWER INSTL
180599-01-XXX

SPACER
166672-06-CHT
SCREW
000G39-10-16U (6)

TOILET
147421-02-CHT

GASKET
167219-03-CHT
(UNDER WOOD FLOOR)

SINK-LAV
151679-01-CHT
SEAL
091255-03-000(940)
STRAINER
163569-01-000 (9)

ADAPTER-ANGLE
165406-02-000

TRAP-WATERLESS
165406-01-000

ARM-WASTE
126588-02-000 (7)

VIEW B

DETAIL C

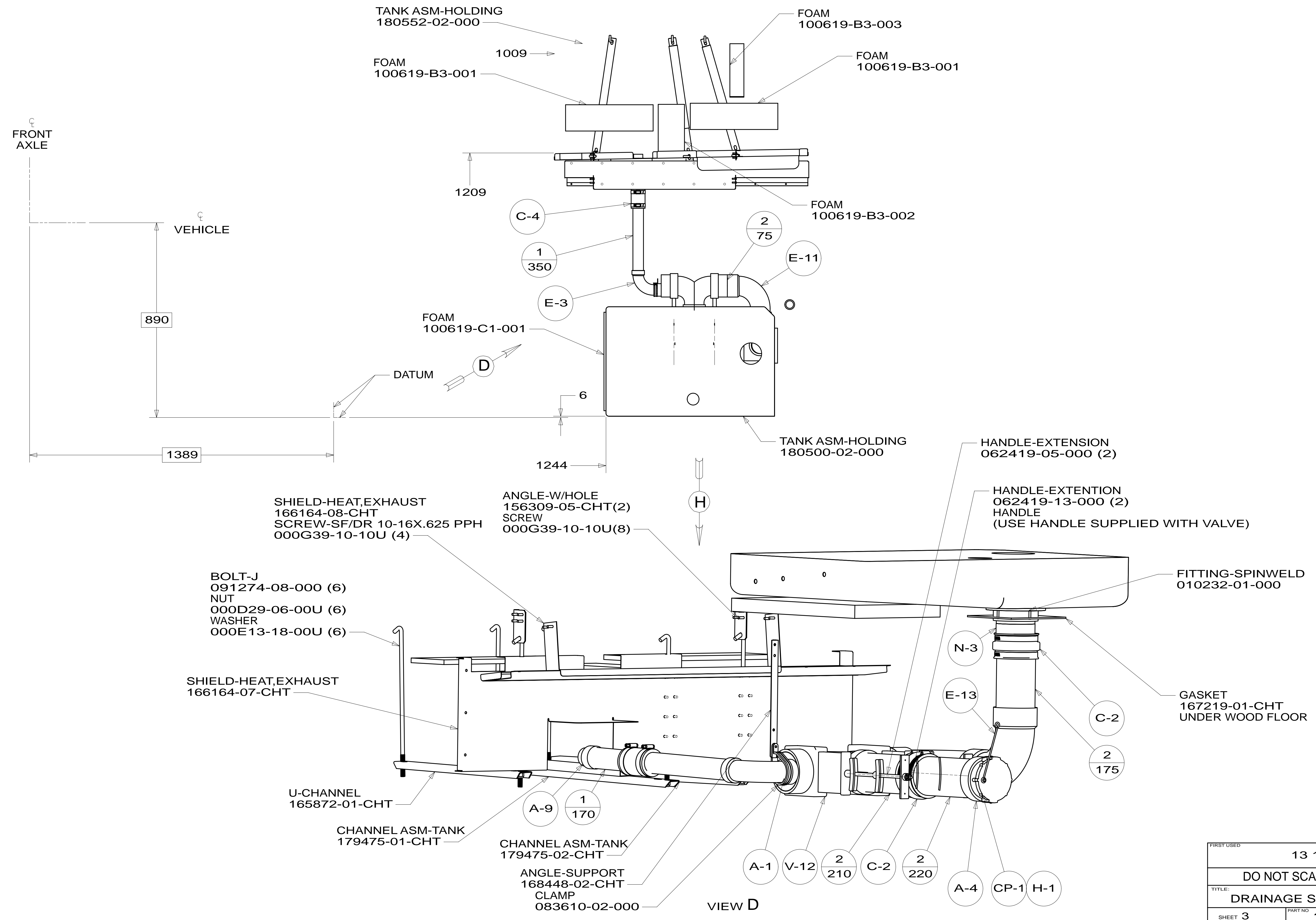
DETAIL C
(SHOWN W/OUT SHOWER)

DETAIL E

DETAIL E

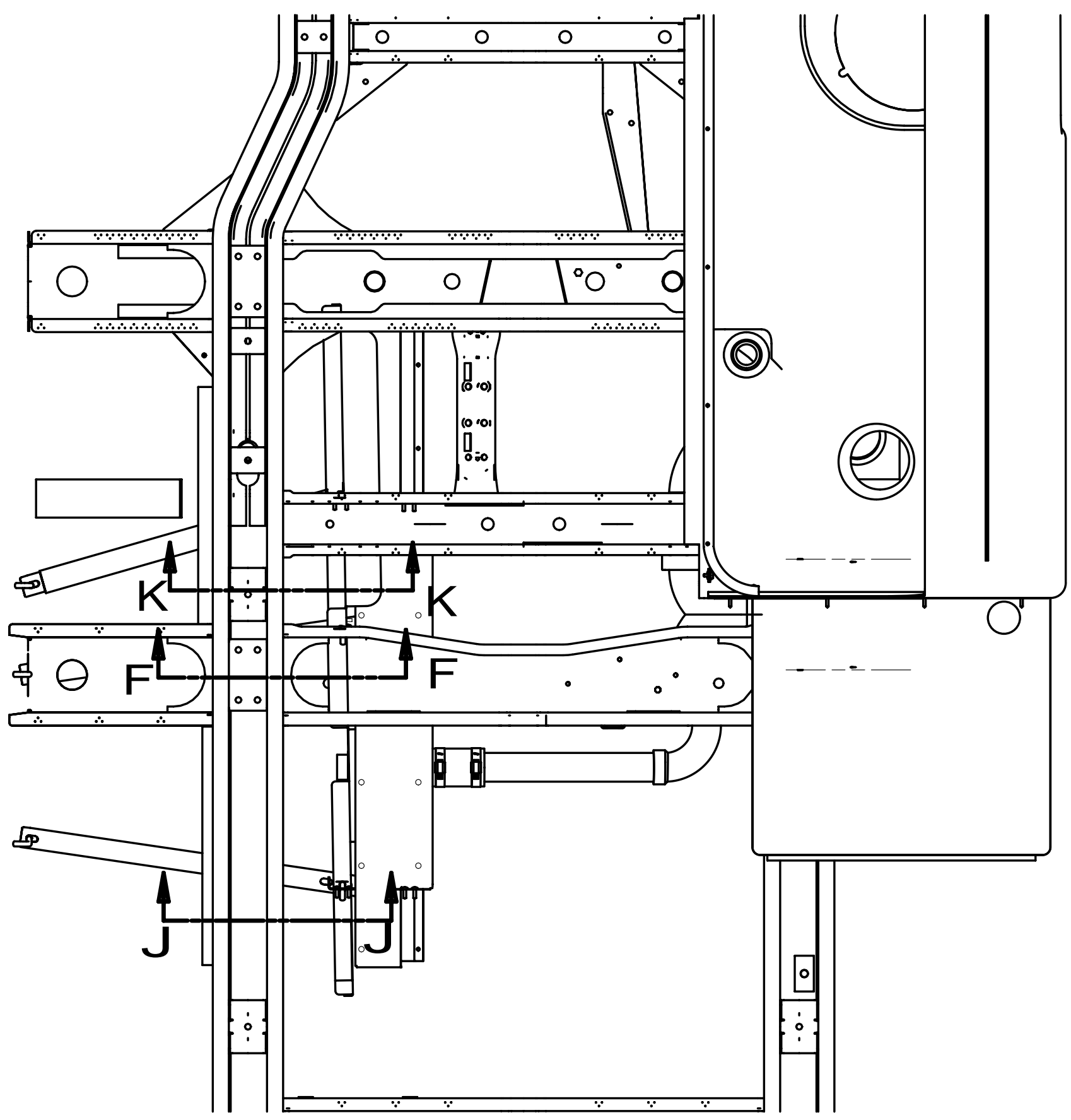
FIRST USED	13 170A	
DO NOT SCALE DRAWING		
TITLE:	DRAINAGE SYSTEM INSTL	
SHEET 2	PART NO	180151
		REV
		08-Feb-2013

* 180151 A

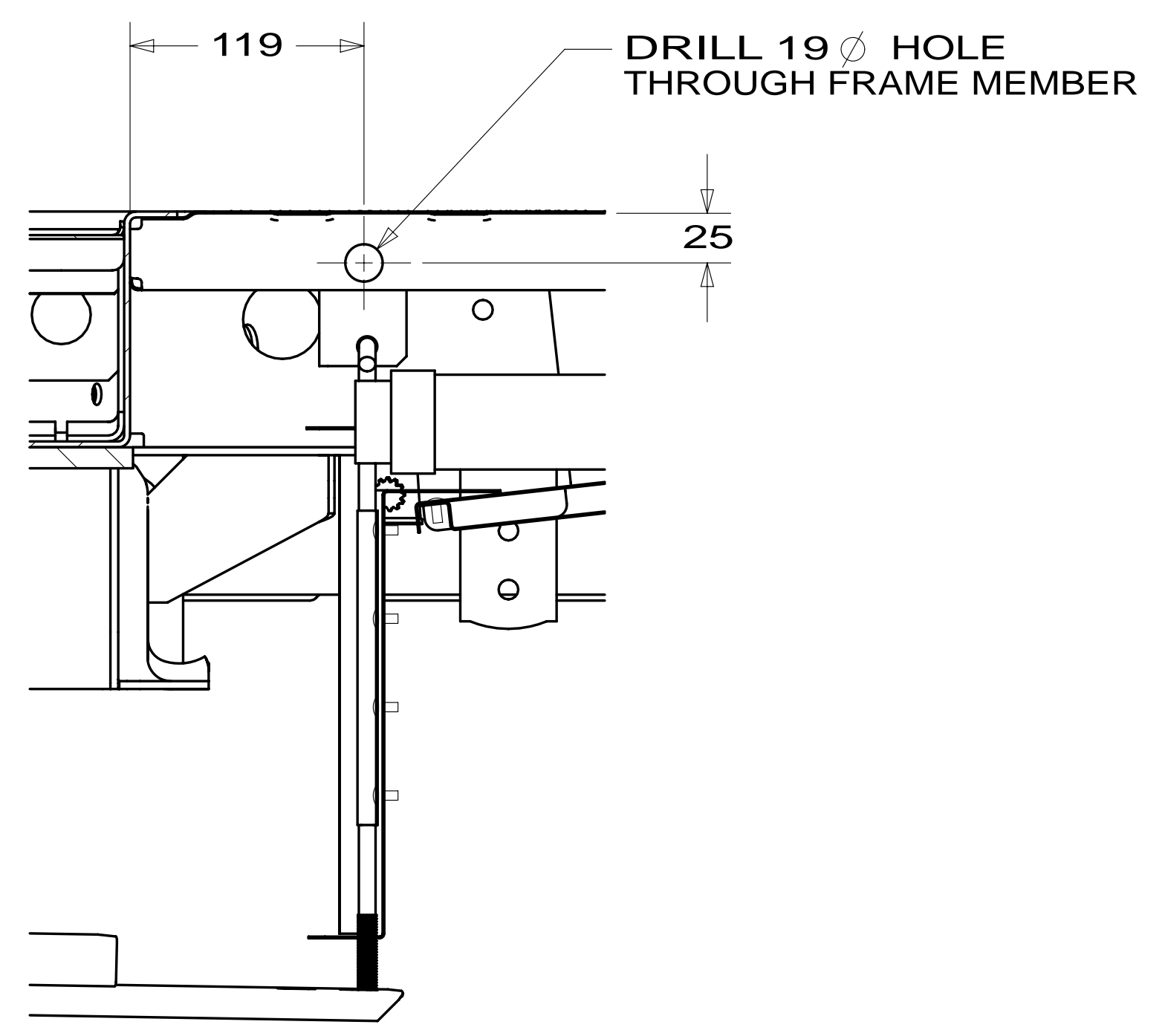


FIRST USED	13 170A	
DO NOT SCALE DRAWING		
TITLE: DRAINAGE SYSTEM INSTL		
SHEET 3	PART NO 180151	REV
		08-Feb-2013

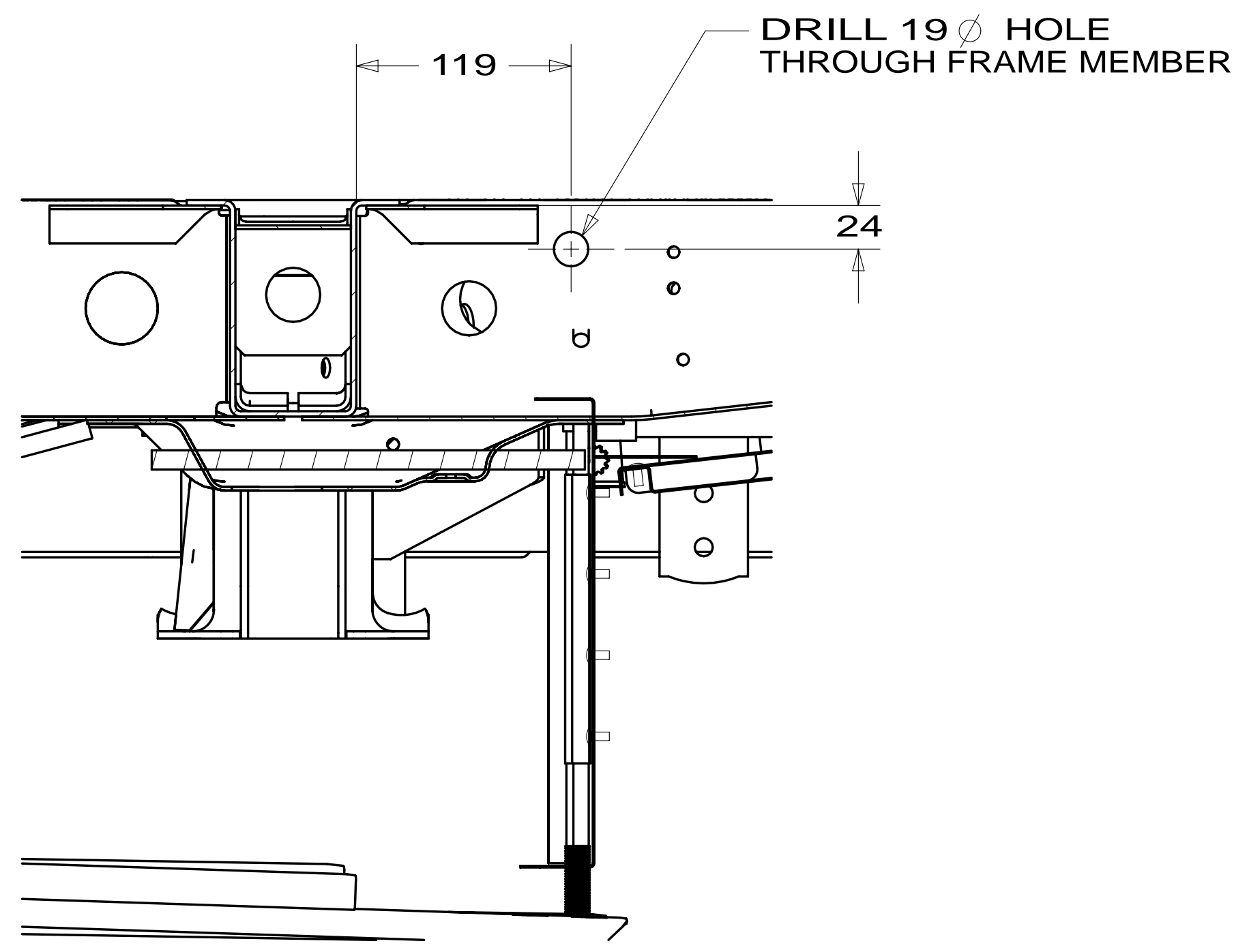
* 180151 * A



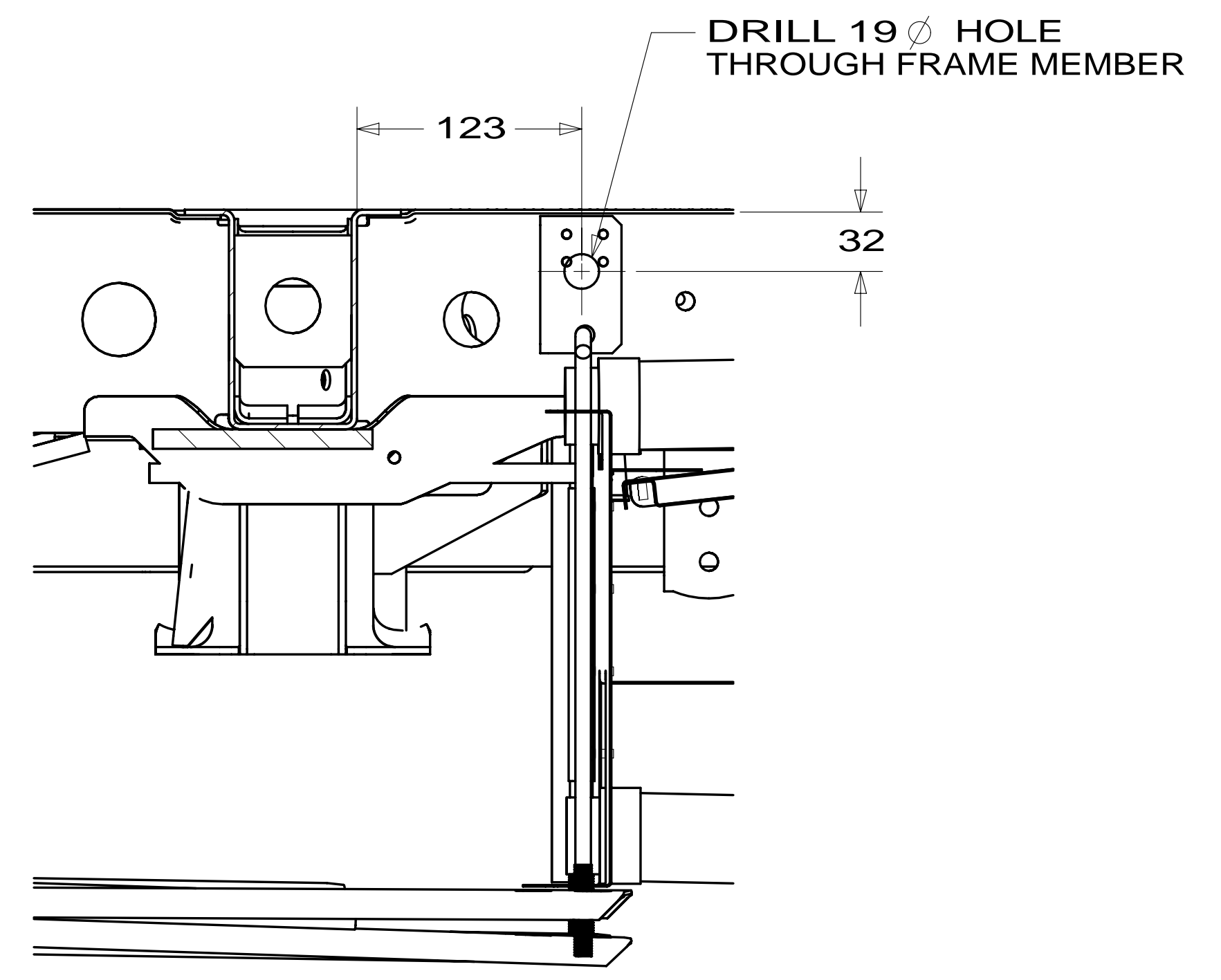
VIEW H



SECTION K-K



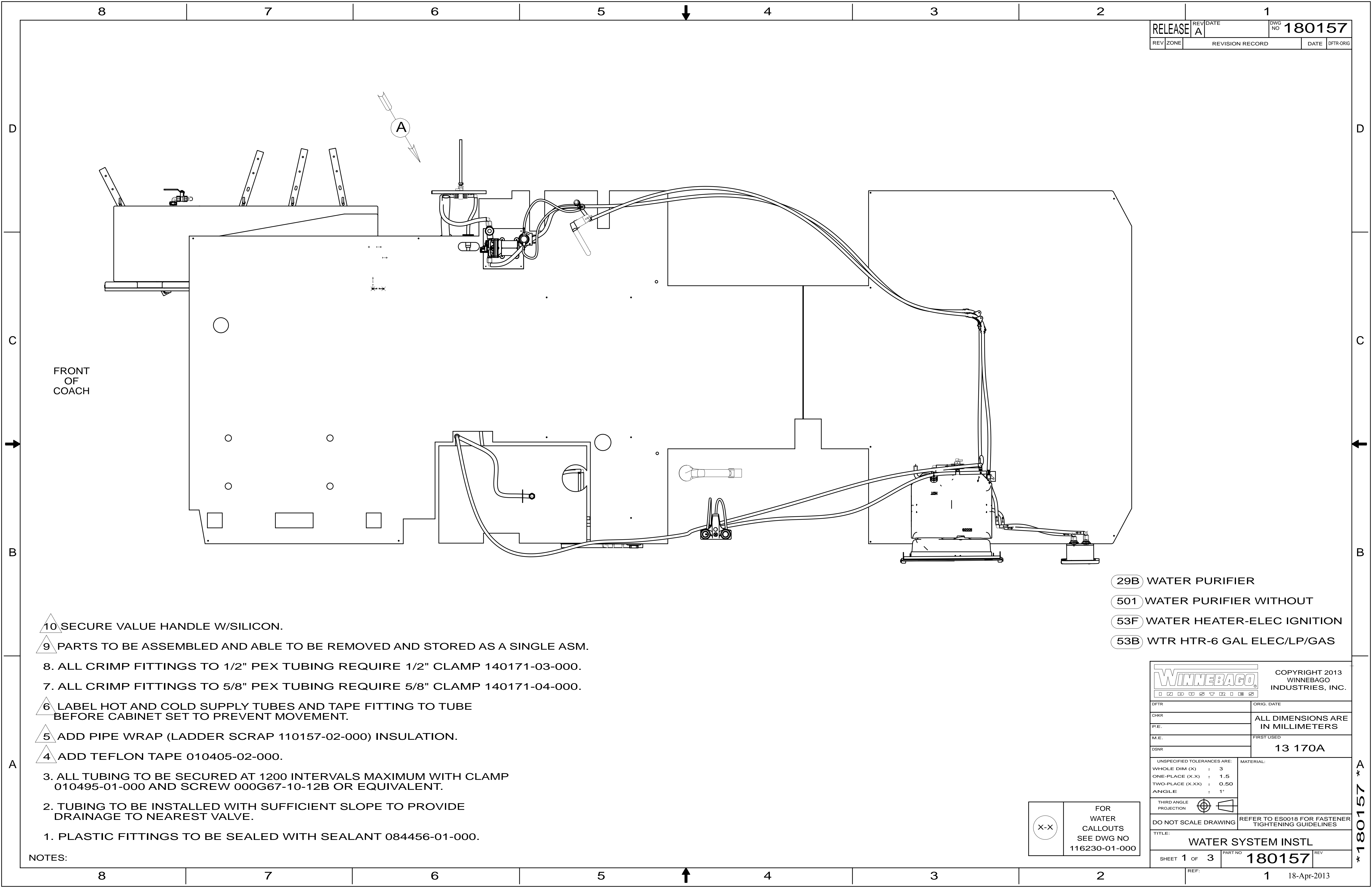
SECTION F-F



SECTION J-J

FIRST USED	13 170A		
TITLE:	DO NOT SCALE DRAWING		
TITLE:	DRAINAGE SYSTEM INSTL		
SHEET 4	PART NO	180151	REV
		1	08-Feb-2013

* 180151 * A



FRONT OF COACH

- 10 SECURE VALVE HANDLE W/SILICON.
- 9 PARTS TO BE ASSEMBLED AND ABLE TO BE REMOVED AND STORED AS A SINGLE ASM.
- 8. ALL CRIMP FITTINGS TO 1/2" PEX TUBING REQUIRE 1/2" CLAMP 140171-03-000.
- 7. ALL CRIMP FITTINGS TO 5/8" PEX TUBING REQUIRE 5/8" CLAMP 140171-04-000.
- 6 LABEL HOT AND COLD SUPPLY TUBES AND TAPE FITTING TO TUBE BEFORE CABINET SET TO PREVENT MOVEMENT.
- 5 ADD PIPE WRAP (LADDER SCRAP 110157-02-000) INSULATION.
- 4 ADD TEFLON TAPE 010405-02-000.
- 3. ALL TUBING TO BE SECURED AT 1200 INTERVALS MAXIMUM WITH CLAMP 010495-01-000 AND SCREW 000G67-10-12B OR EQUIVALENT.
- 2. TUBING TO BE INSTALLED WITH SUFFICIENT SLOPE TO PROVIDE DRAINAGE TO NEAREST VALVE.
- 1. PLASTIC FITTINGS TO BE SEALED WITH SEALANT 084456-01-000.

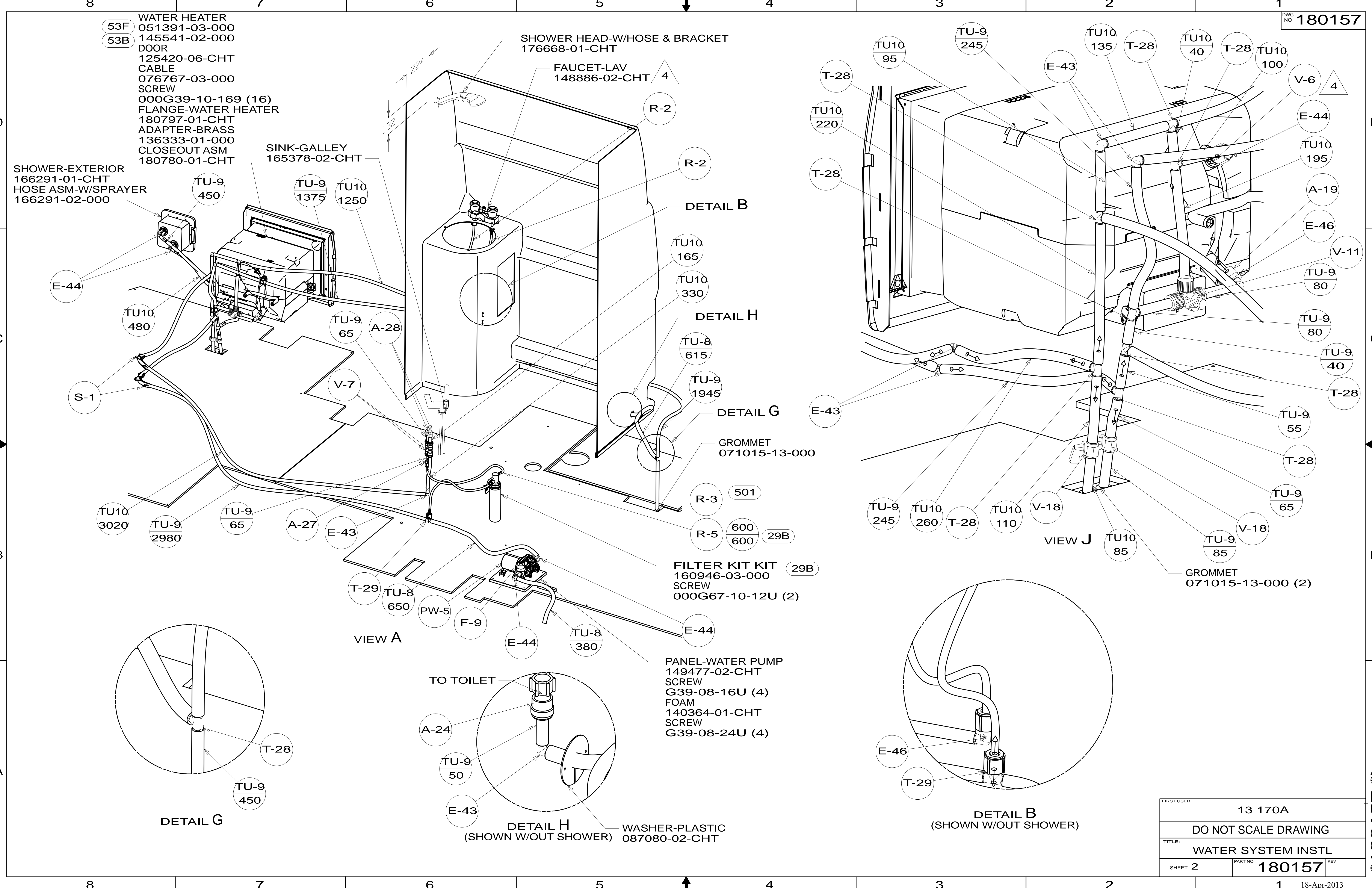
- 29B WATER PURIFIER
- 501 WATER PURIFIER WITHOUT
- 53F WATER HEATER-ELEC IGNITION
- 53B WTR HTR-6 GAL ELEC/LP/GAS

NOTES:

X-X
FOR WATER CALLOUTS SEE DWG NO 116230-01-000

		COPYRIGHT 2013 WINNEBAGO INDUSTRIES, INC.	
DFT-ORIG	ORIG. DATE	ALL DIMENSIONS ARE IN MILLIMETERS	
CHKR			
P.E.			
M.E.	FIRST USED		
DSNR		13 170A	
UNSPECIFIED TOLERANCES ARE:		MATERIAL:	
WHOLE DIM (X)	: 3		
ONE-PLACE (X.X)	: 1.5		
TWO-PLACE (X.XX)	: 0.50		
ANGLE	: 1°		
THIRD ANGLE PROJECTION			
DO NOT SCALE DRAWING		REFER TO ES0018 FOR FASTENER TIGHTENING GUIDELINES	
TITLE: WATER SYSTEM INSTL			
SHEET 1 OF 3	PART NO	180157	REV
REF:	1	18-Apr-2013	

* 180157 * A



- 53F 051391-03-000 WATER HEATER
- 53B 145541-02-000 DOOR
- 125420-06-CHT CABLE
- 076767-03-000 SCREW
- 000G39-10-169 (16) FLANGE-WATER HEATER
- 180797-01-CHT ADAPTER-BRASS
- 136333-01-000 CLOSEOUT ASM
- 180780-01-CHT SINK-GALLEY

SHOWER HEAD-W/HOSE & BRACKET
176668-01-CHT

FAUCET-LAV
148886-02-CHT

SINK-GALLEY
165378-02-CHT

SHOWER-EXTERIOR
166291-01-CHT
HOSE ASM-W/SPRAYER
166291-02-000

DETAIL B

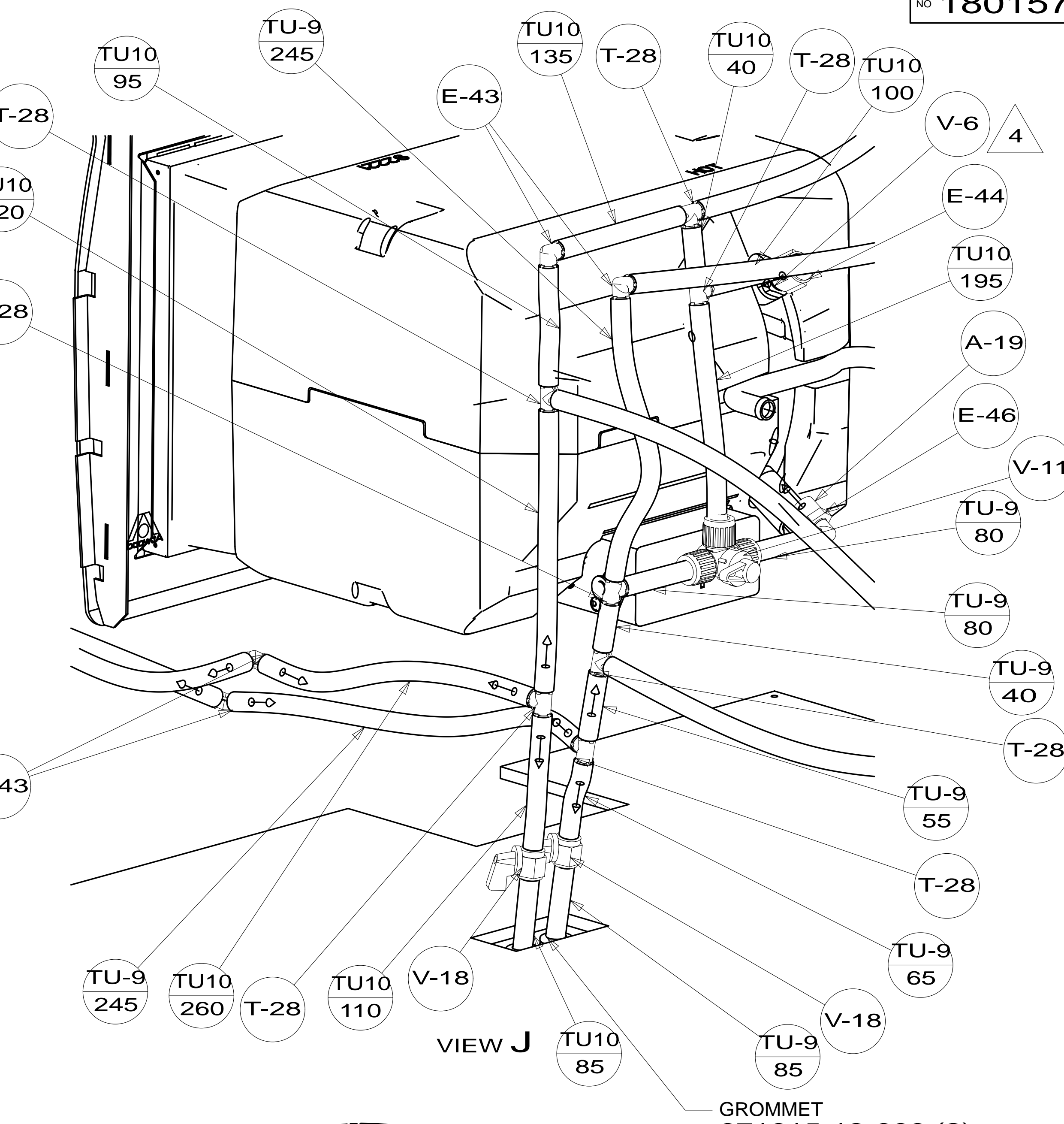
DETAIL H

DETAIL G

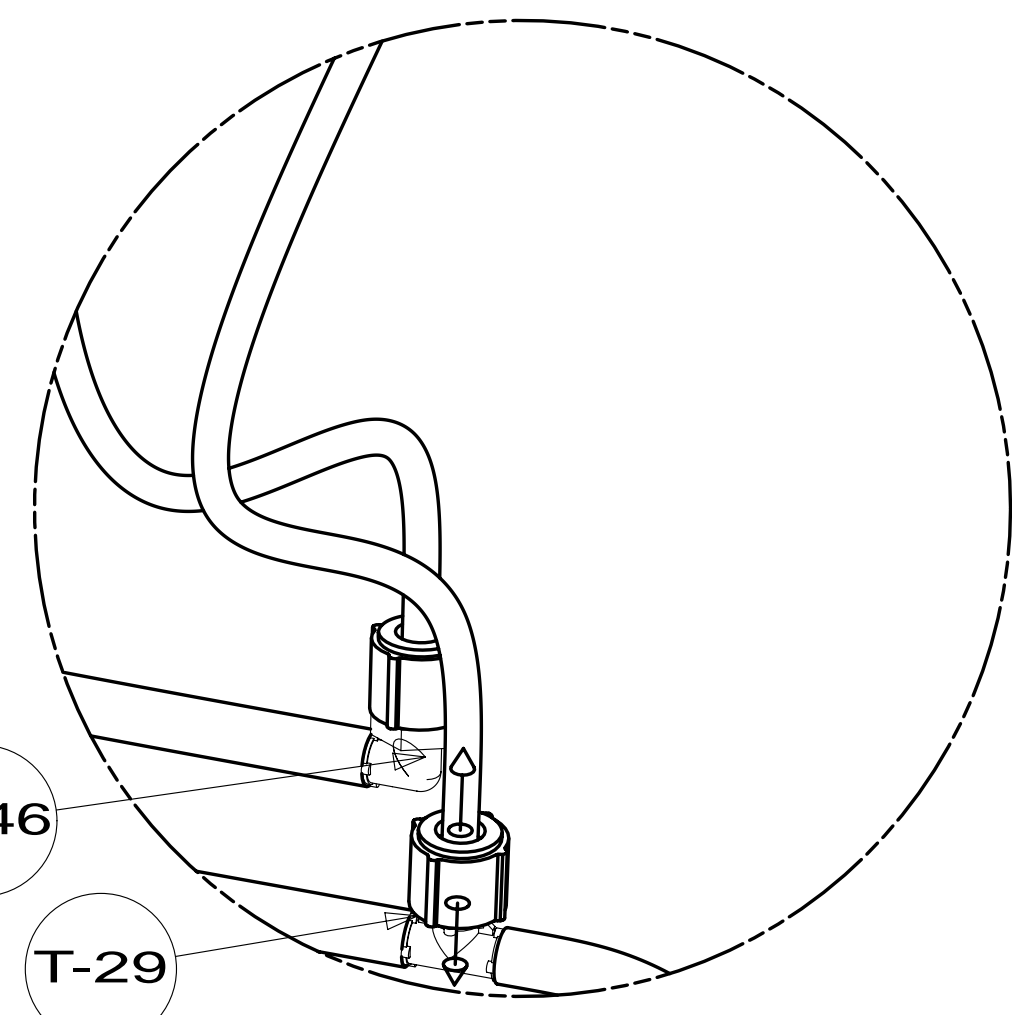
FILTER KIT KIT
160946-03-000
SCREW
000G67-10-12U (2)

PANEL-WATER PUMP
149477-02-CHT
SCREW
G39-08-16U (4)
FOAM
140364-01-CHT
SCREW
G39-08-24U (4)

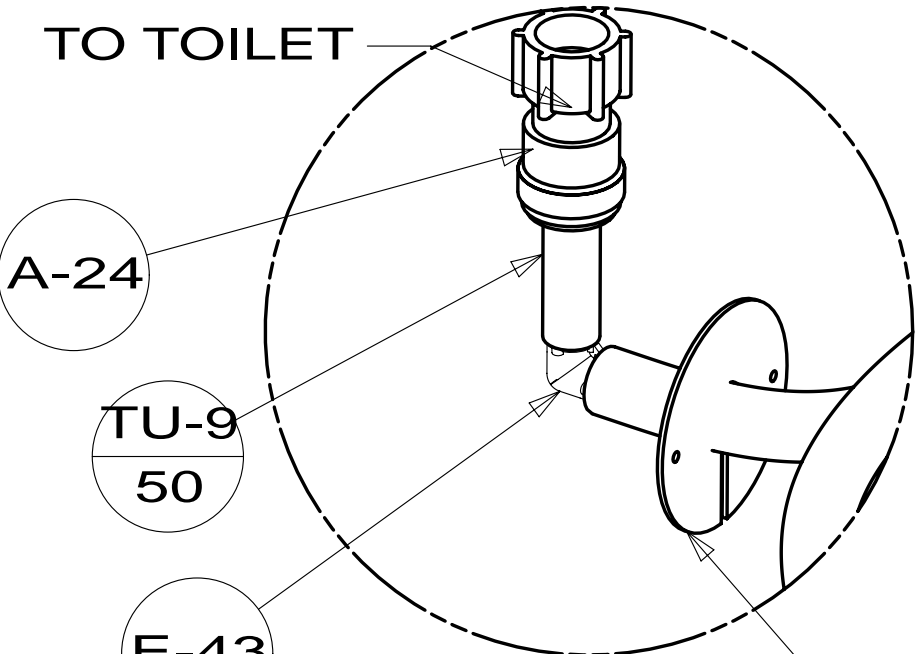
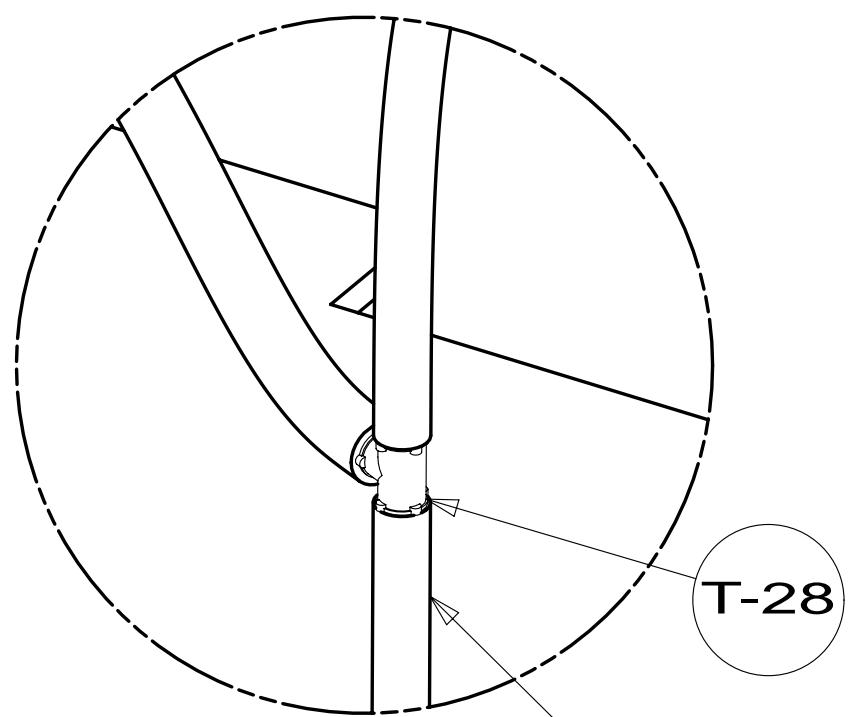
WASHER-PLASTIC
087080-02-CHT



VIEW J

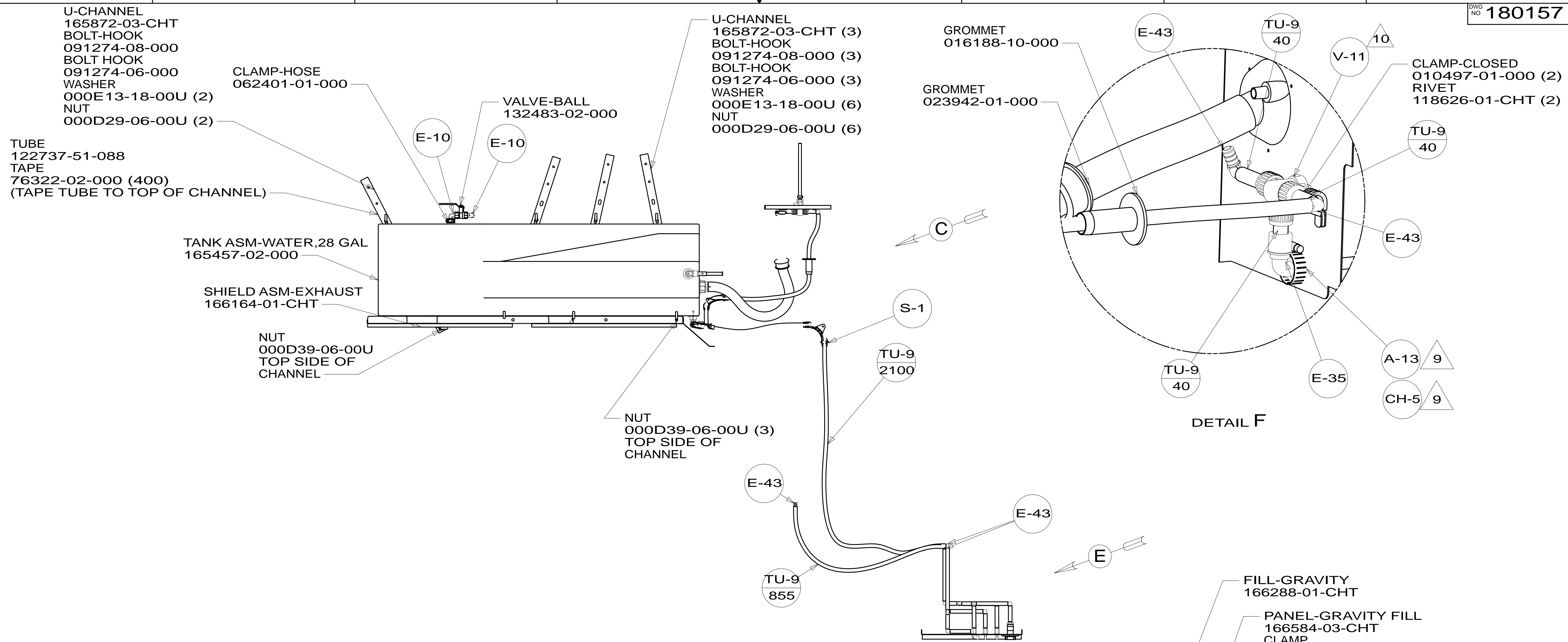


VIEW A

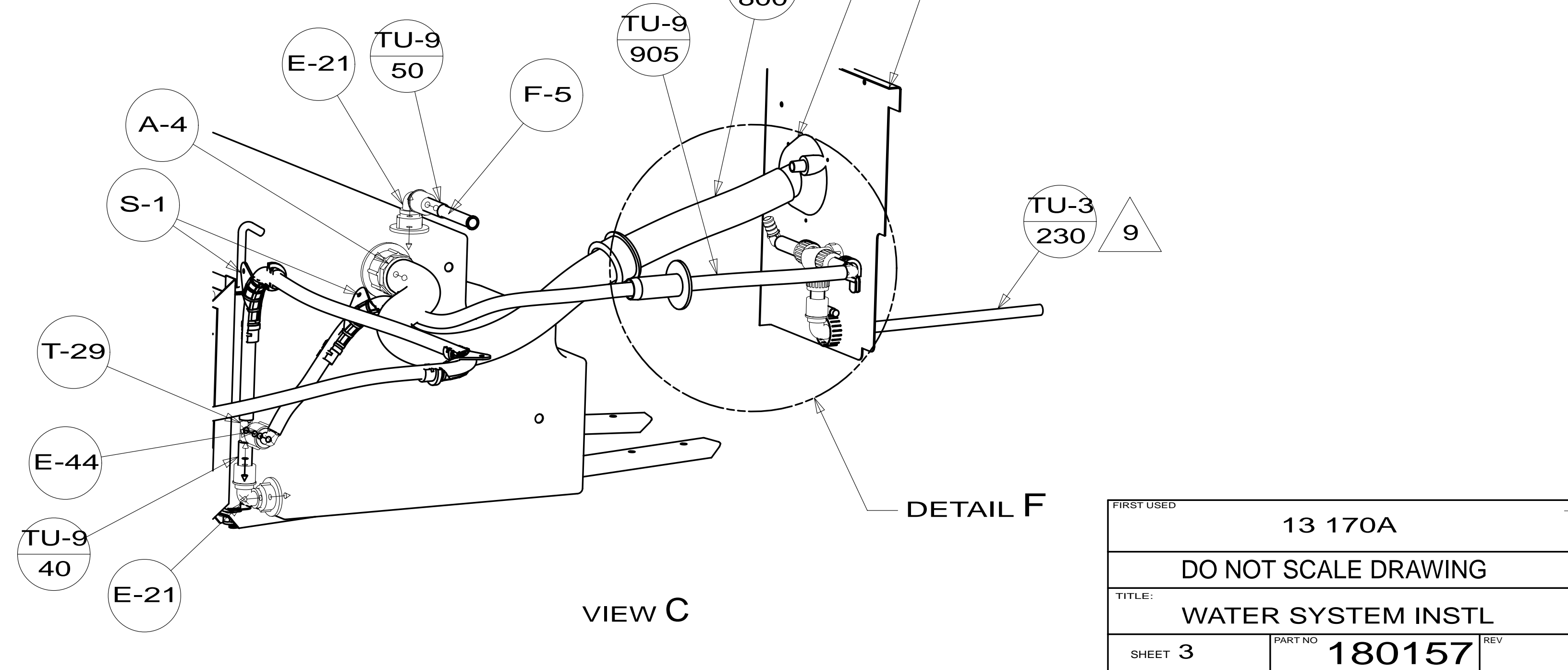
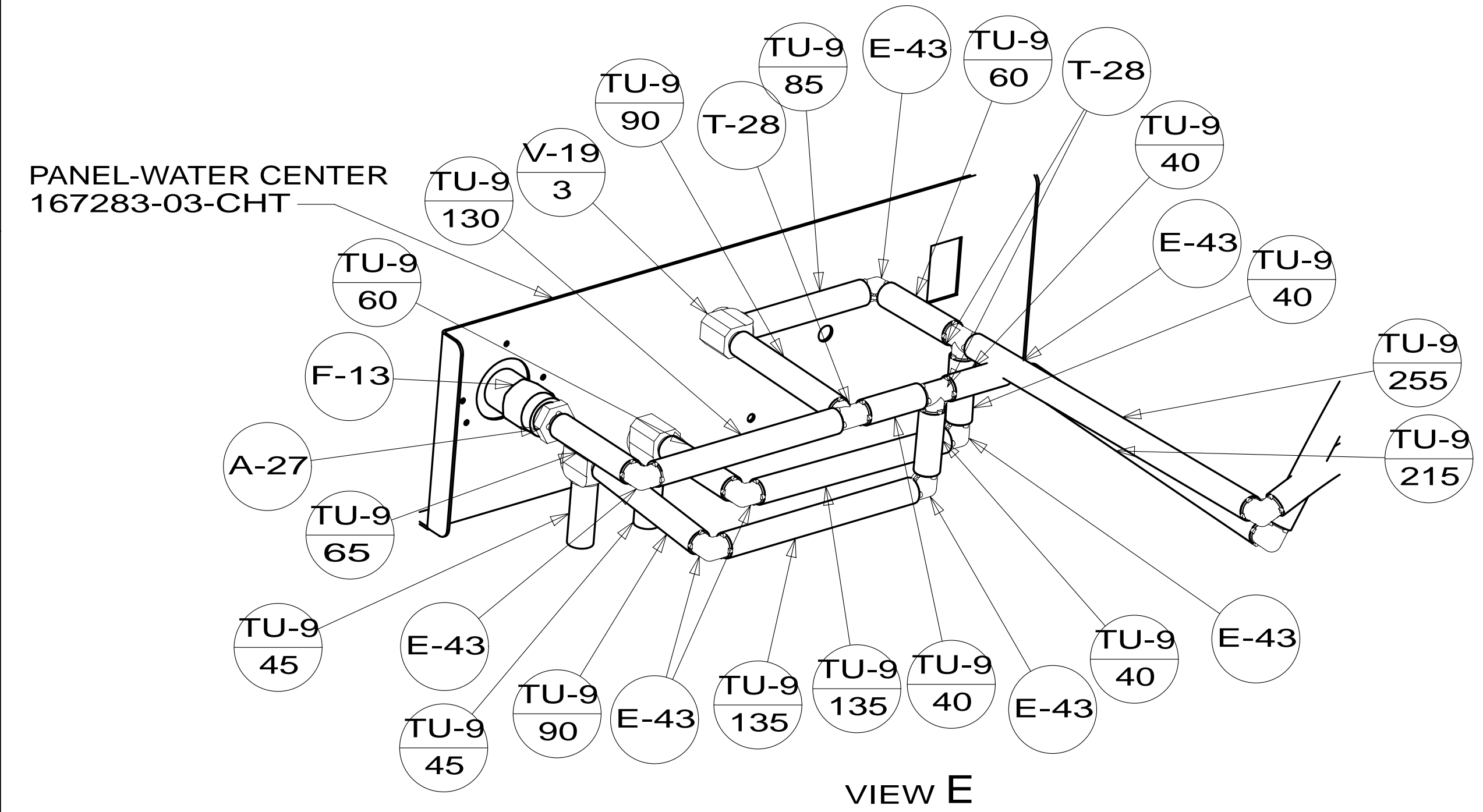


FIRST USED	13 170A
DO NOT SCALE DRAWING	
TITLE:	WATER SYSTEM INSTL
SHEET 2	PART NO 180157 REV
18-Apr-2013	

* 180157 * A



WATER LINES AND TANKS UNDER FLOOR



FIRST USED	13 170A	
TITLE:	DO NOT SCALE DRAWING	
SHEET 3	PART NO	180157
	REV	
18-Apr-2013		

* 180157 * A