



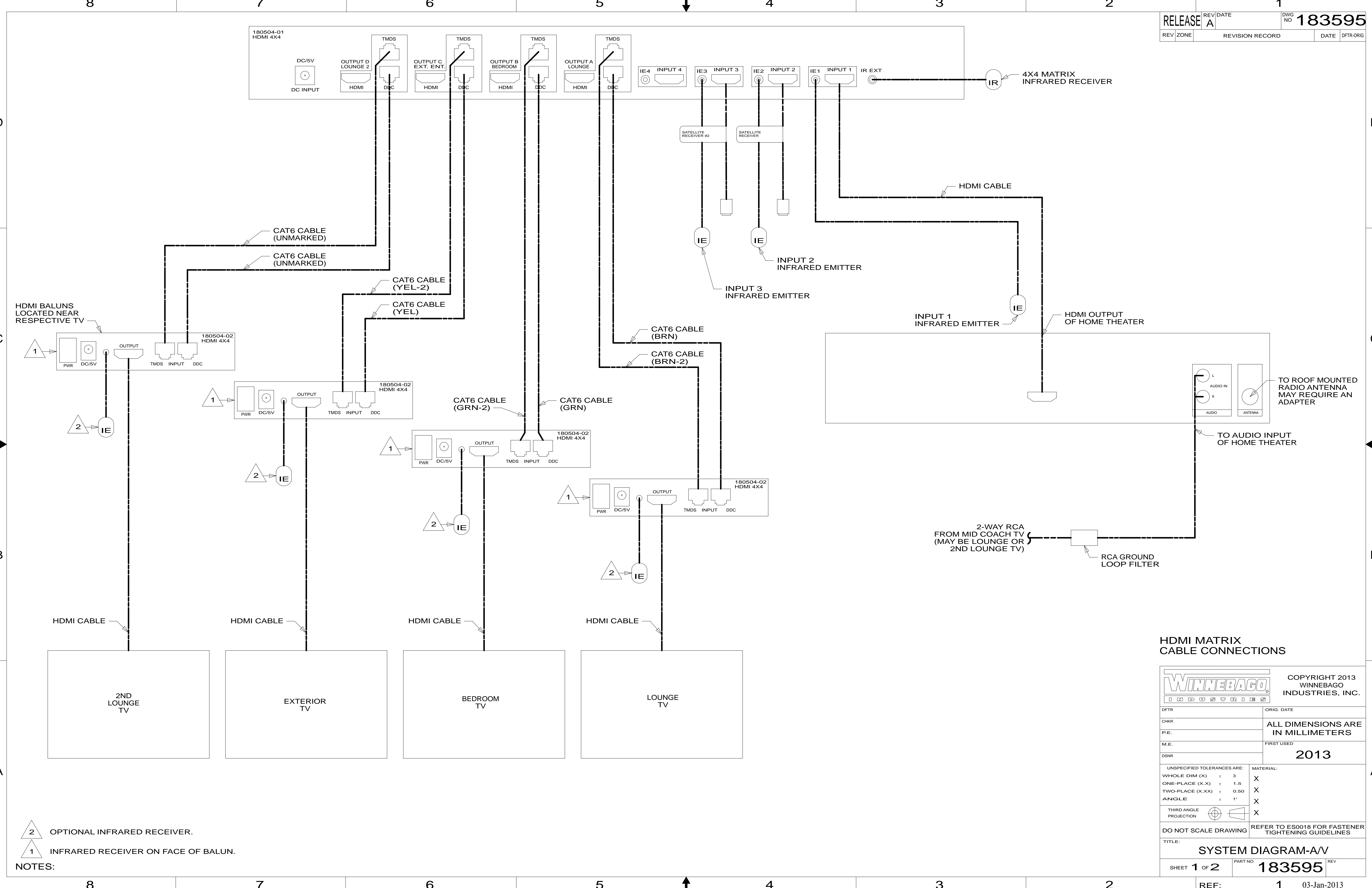
**DANGER**

**Danger of electrical shock, burns or death.** Always remove all power sources before attempting any repair, service or diagnostic work. Power can be present from shore power, generator, inverter or battery. All power sources must be disabled and secured before performing any service.



**CAUTION**

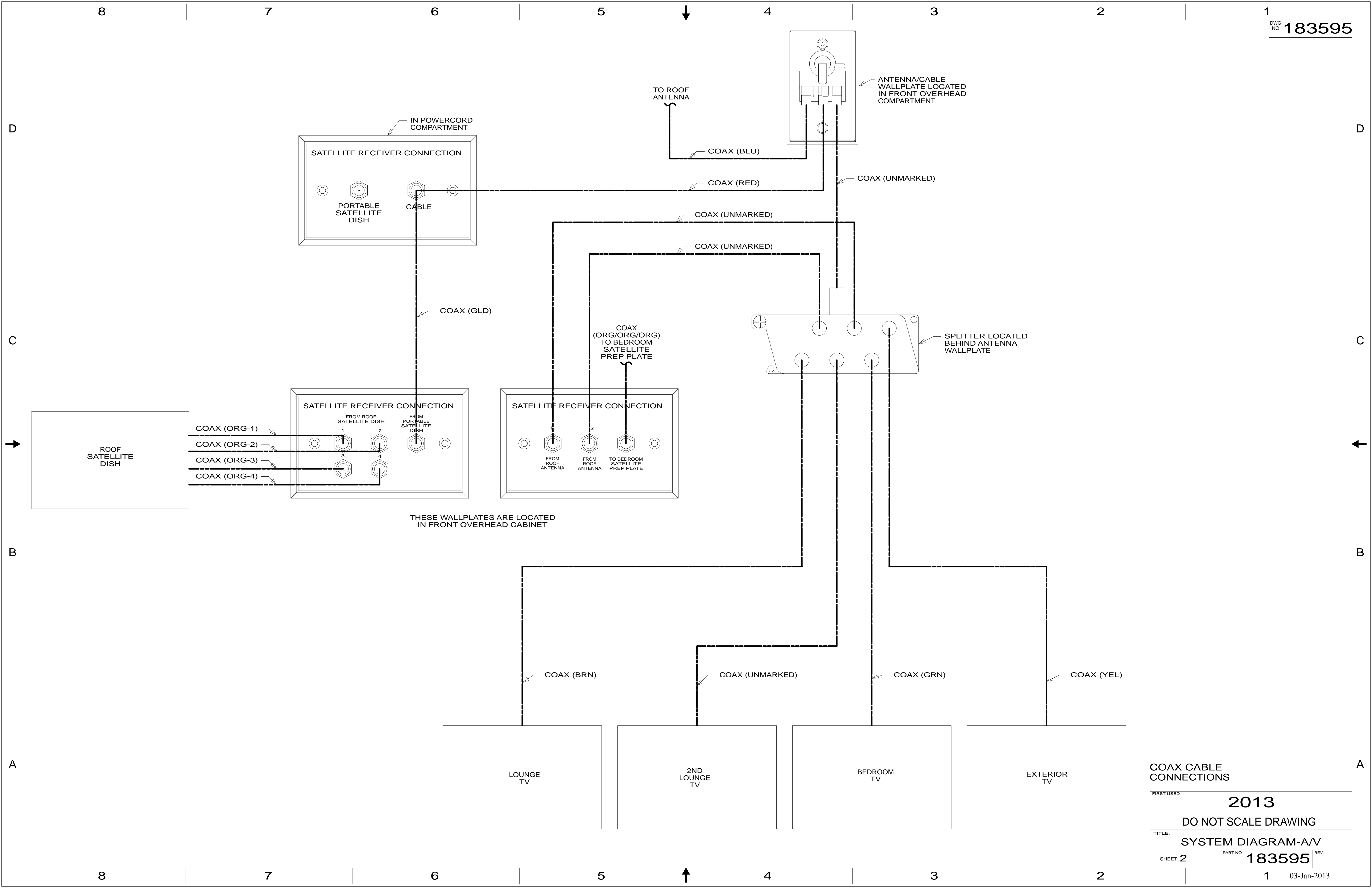
If you lack the skills, tools or equipment to perform diagnostic or repair work leave such work to an authorized Winnebago Industries dealer or other qualified shop.



NOTES:  
 2 OPTIONAL INFRARED RECEIVER.  
 1 INFRARED RECEIVER ON FACE OF BALUN.

HDMI MATRIX CABLE CONNECTIONS

		COPYRIGHT 2013 WINNEBAGO INDUSTRIES, INC.
DFTR	ORIG. DATE	
CHKR		ALL DIMENSIONS ARE IN MILLIMETERS
P.E.		
M.E.	FIRST USED	2013
DSNR		
UNSPECIFIED TOLERANCES ARE:		MATERIAL:
WHOLE DIM (X)	: 3	X
ONE-PLACE (X.X)	: 1.5	X
TWO-PLACE (X.XX)	: 0.50	X
ANGLE	: 1°	X
THIRD ANGLE PROJECTION		X
DO NOT SCALE DRAWING		REFER TO ES0018 FOR FASTENER TIGHTENING GUIDELINES
TITLE: SYSTEM DIAGRAM-A/V		
SHEET 1 OF 2	PART NO 183595	REV
REF: 1	03-Jan-2013	



THESE WALLPLATES ARE LOCATED IN FRONT OVERHEAD CABINET

COAX CABLE CONNECTIONS

FIRST USED	2013		
DO NOT SCALE DRAWING			
TITLE:	SYSTEM DIAGRAM-A/V		
SHEET 2	PART NO	183595	REV
	1		03-Jan-2013