



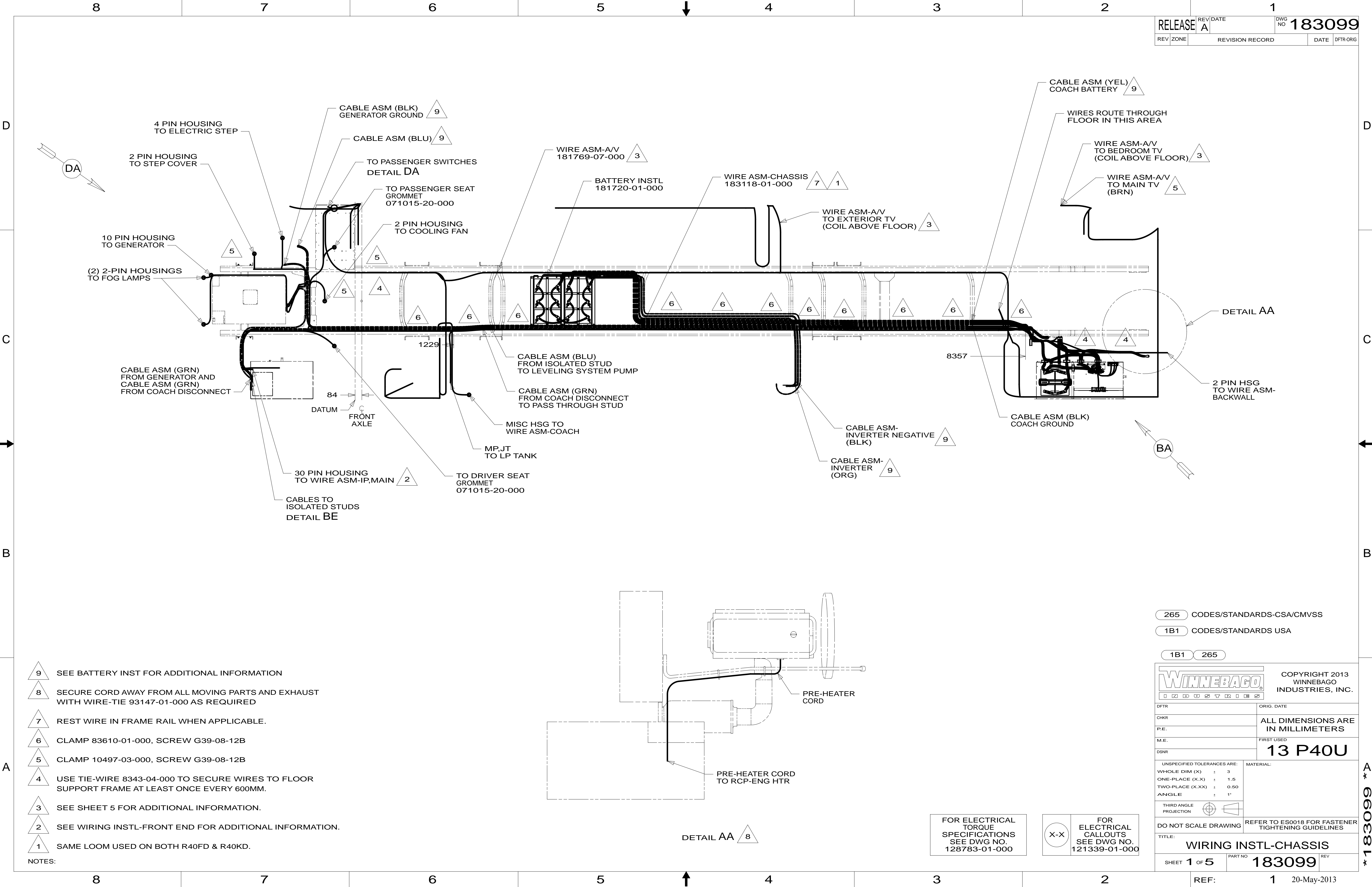
DANGER

Danger of electrical shock, burns or death. Always remove all power sources before attempting any repair, service or diagnostic work. Power can be present from shore power, generator, inverter or battery. All power sources must be disabled and secured before performing any service.

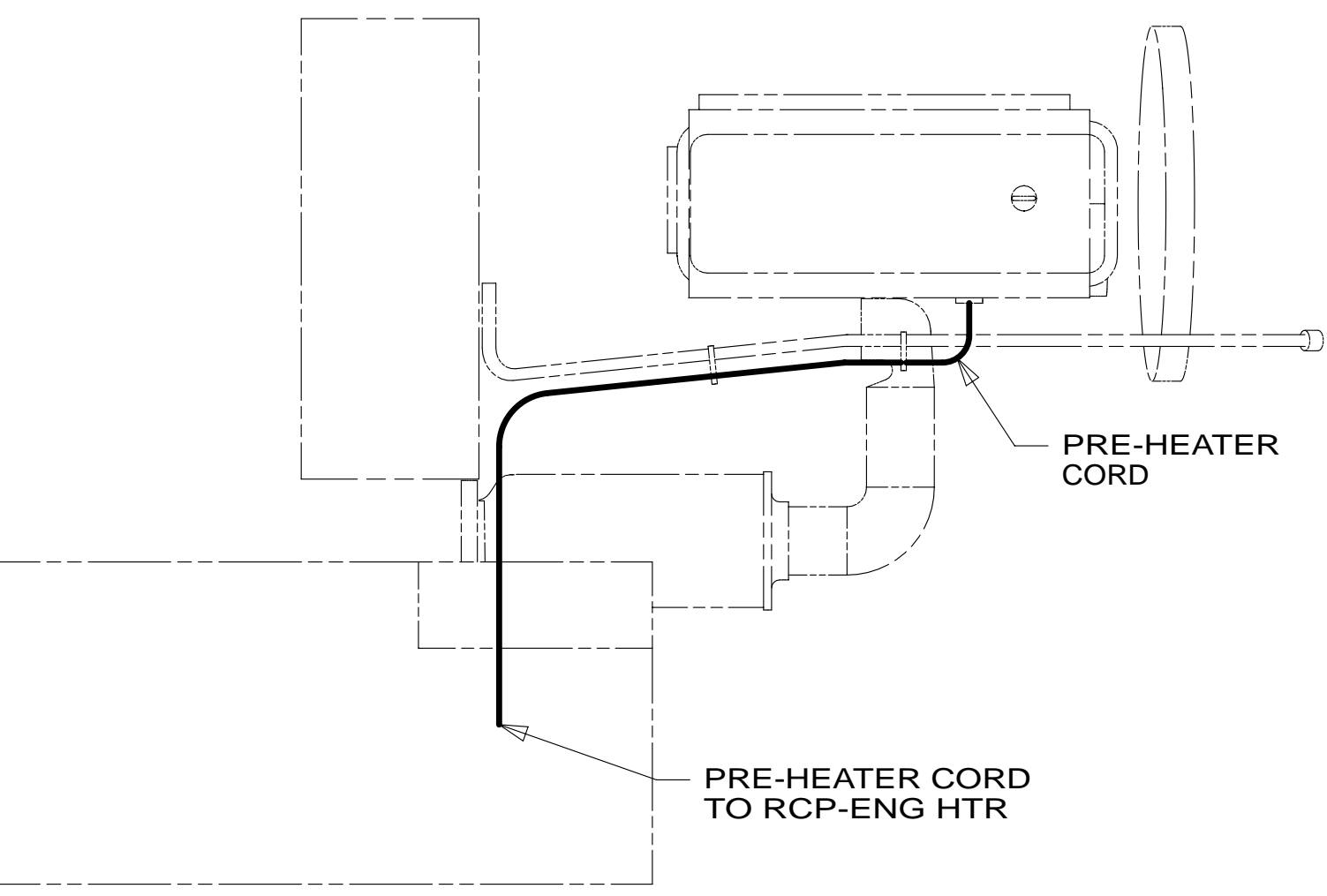


CAUTION

If you lack the skills, tools or equipment to perform diagnostic or repair work leave such work to an authorized Winnebago Industries dealer or other qualified shop.



- NOTES:
- 9 SEE BATTERY INST FOR ADDITIONAL INFORMATION
 - 8 SECURE CORD AWAY FROM ALL MOVING PARTS AND EXHAUST WITH WIRE-TIE 93147-01-000 AS REQUIRED
 - 7 REST WIRE IN FRAME RAIL WHEN APPLICABLE.
 - 6 CLAMP 83610-01-000, SCREW G39-08-12B
 - 5 CLAMP 10497-03-000, SCREW G39-08-12B
 - 4 USE TIE-WIRE 8343-04-000 TO SECURE WIRES TO FLOOR SUPPORT FRAME AT LEAST ONCE EVERY 600MM.
 - 3 SEE SHEET 5 FOR ADDITIONAL INFORMATION.
 - 2 SEE WIRING INSTL-FRONT END FOR ADDITIONAL INFORMATION.
 - 1 SAME LOOM USED ON BOTH R40FD & R40KD.



FOR ELECTRICAL TORQUE SPECIFICATIONS SEE DWG NO. 128783-01-000

FOR ELECTRICAL CALLOUTS SEE DWG NO. 121339-01-000

- 265 CODES/STANDARDS-CSA/CMVSS
- 1B1 CODES/STANDARDS USA
- 1B1 265

WINNEBAGO INDUSTRIES, INC. COPYRIGHT 2013

ALL DIMENSIONS ARE IN MILLIMETERS

13 P40U

UNSPECIFIED TOLERANCES ARE:

WHOLE DIM (X)	: 3
ONE-PLACE (X.X)	: 1.5
TWO-PLACE (X.XX)	: 0.50
ANGLE	: 1°

THIRD ANGLE PROJECTION

DO NOT SCALE DRAWING REFER TO ES0018 FOR FASTENER TIGHTENING GUIDELINES

TITLE: **WIRING INSTL-CHASSIS**

SHEET 1 OF 5 PART NO. 183099 REV 1 20-May-2013

* 183099

CIRCUIT BREAKERS
DETAIL CA

FREIGHTLINER
STARTER CABLE

CHASSIS
BATTERIES
(REF)

PANEL-CLOSEOUT
161730-05-CHT
SCREW
G39-08-12U (4)

PANEL-CLOSEOUT
178322-03-CHT
RIVET-POP
113133-01-CHT (6)

SLIDEOUT
ROOM
CONTROLLERS

BATTERY MODE
SOLENOID AND
RELAYS

WARRANTY INFORMATION
ELECTRICAL COMPONENTS
& WIRING PARTS FROM
THIS LEFT HAND
VEHICLE ONLY

LABEL
98379-09-000

LABEL
98379-04-000

LABEL
98379-08-000

VIEW BA

265 CODES/STANDARDS-CSA/CMVSS

1B1 CODES/STANDARDS USA

1B1 265

FIRST USED
13 P40U

DO NOT SCALE DRAWING

TITLE:
WIRING INSTL-CHASSIS

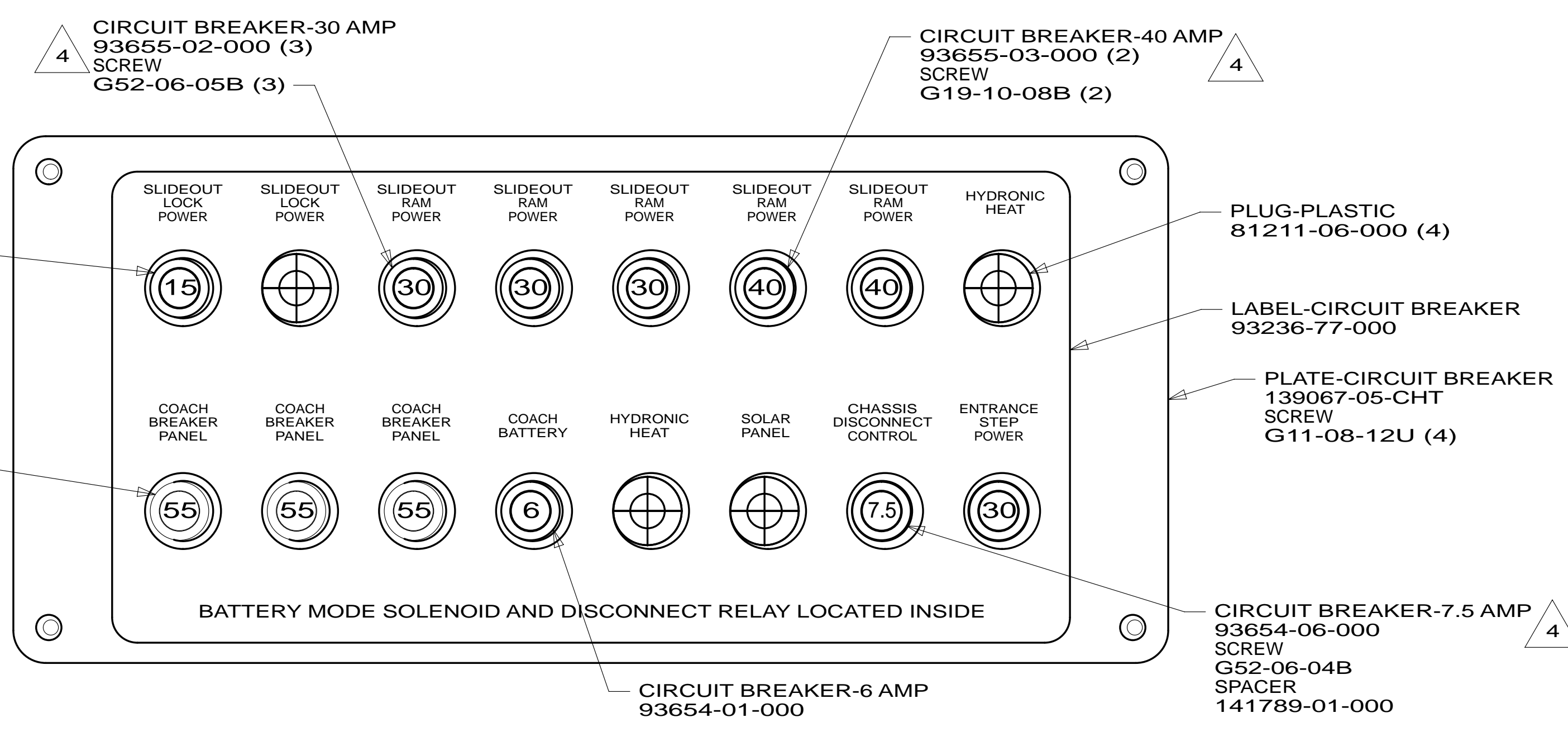
SHEET 2 PART NO **183099** REV

FOR ELECTRICAL
TORQUE
SPECIFICATIONS
SEE DWG NO.
128783-01-000

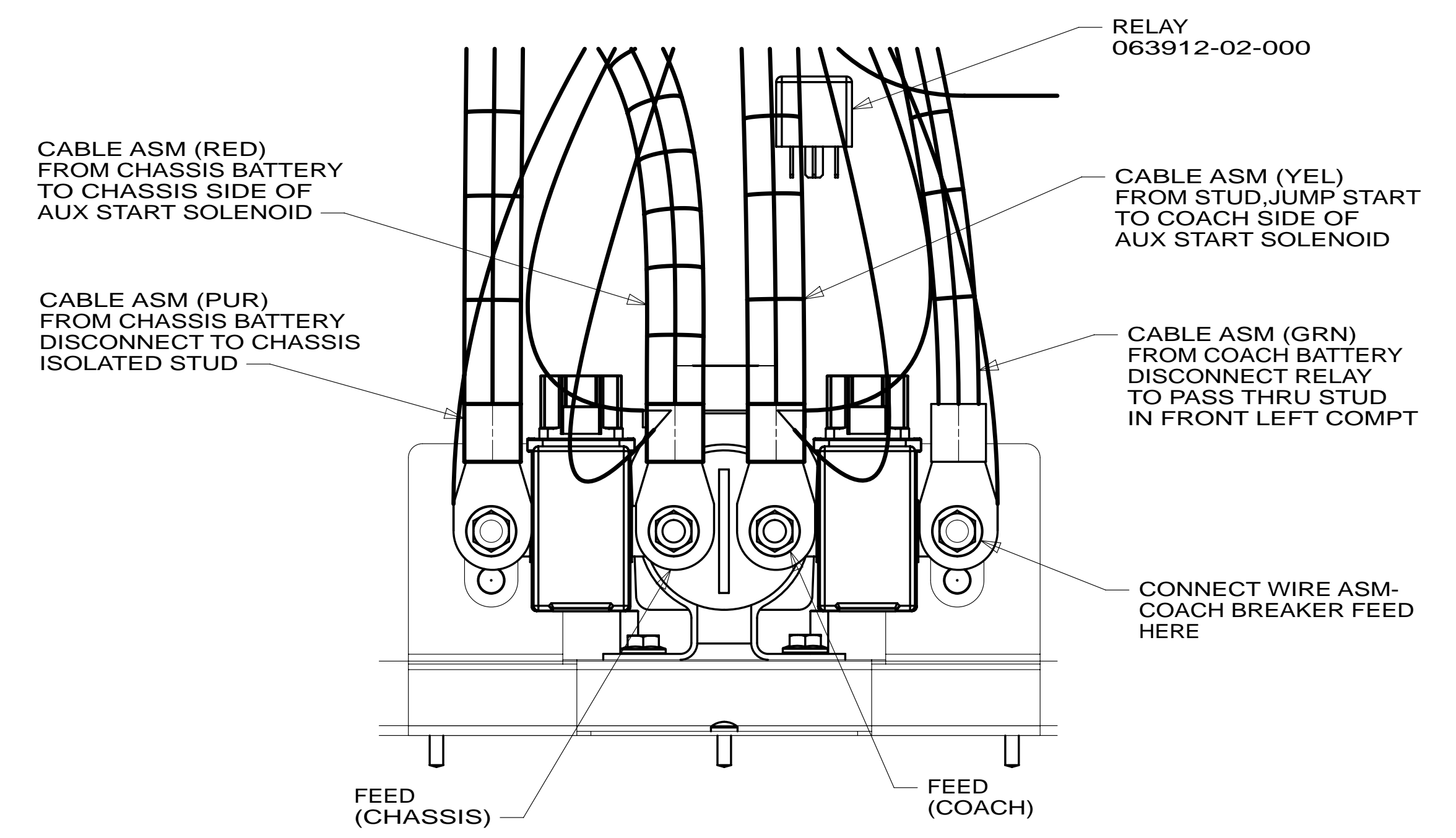
FOR
ELECTRICAL
CALLOUTS
SEE DWG NO.
121339-01-000

X-X

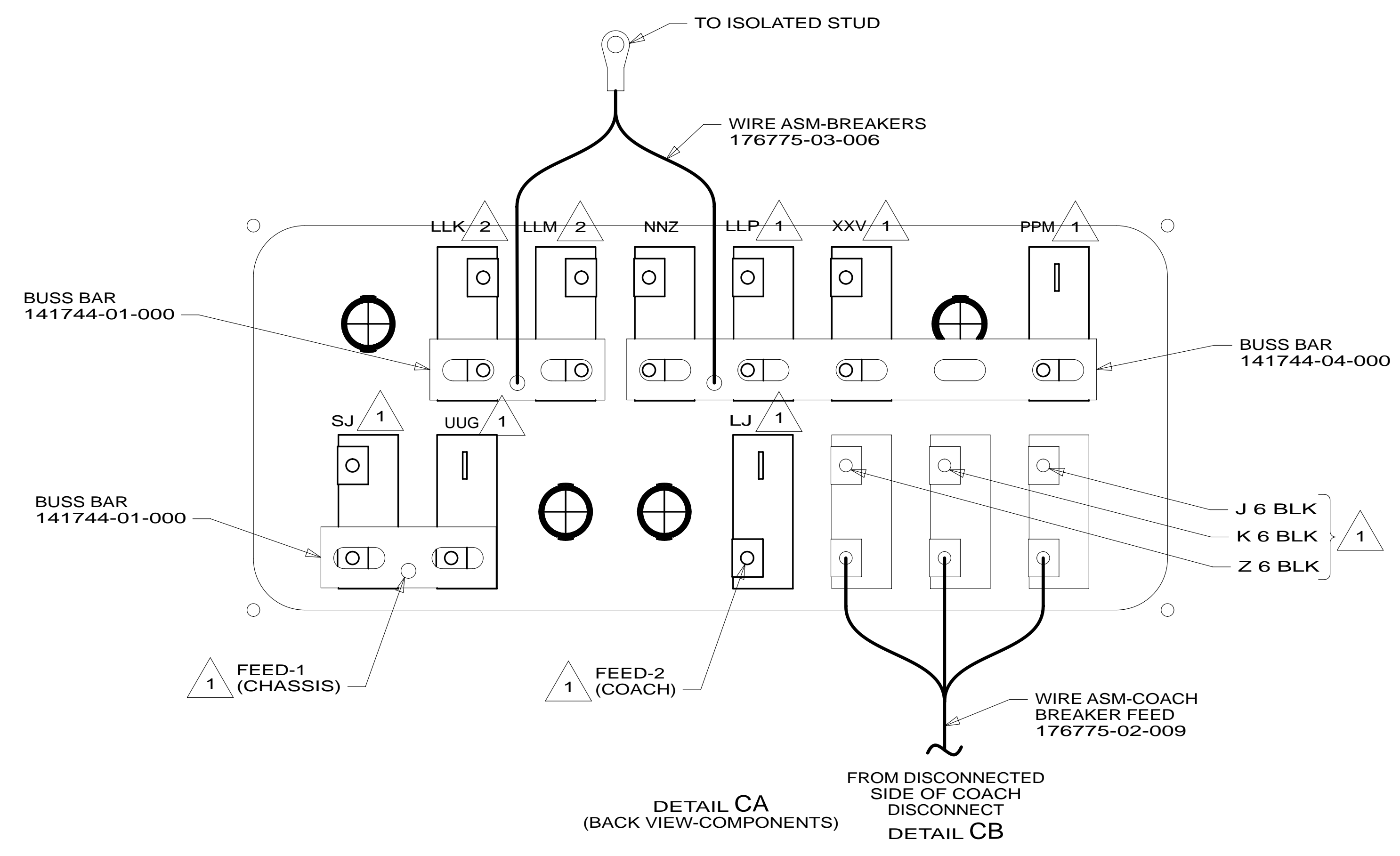
A * 183099



DETAIL CA

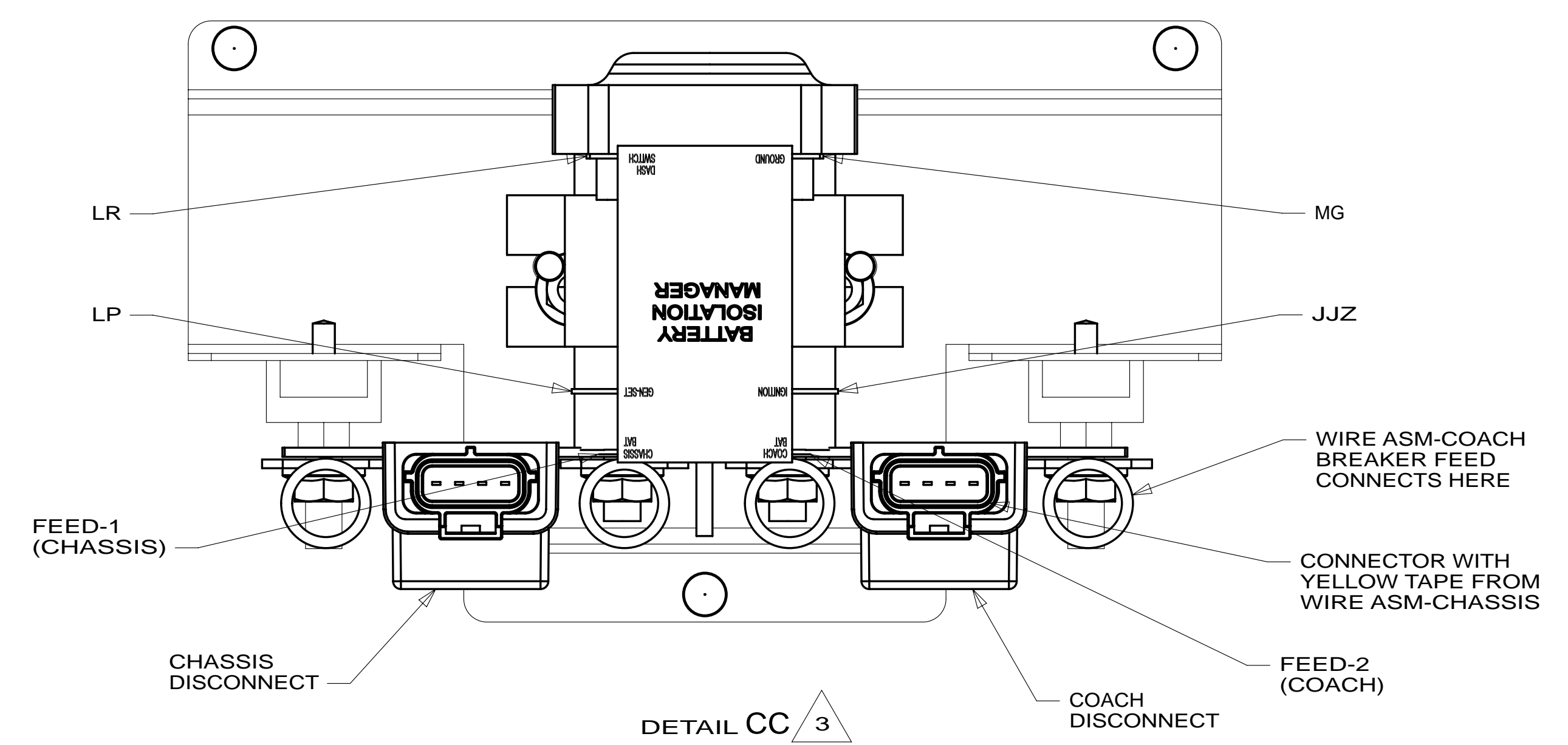


VIEW CB



DETAIL CA (BACK VIEW-COMPONENTS)

DETAIL CB



DETAIL CC 3

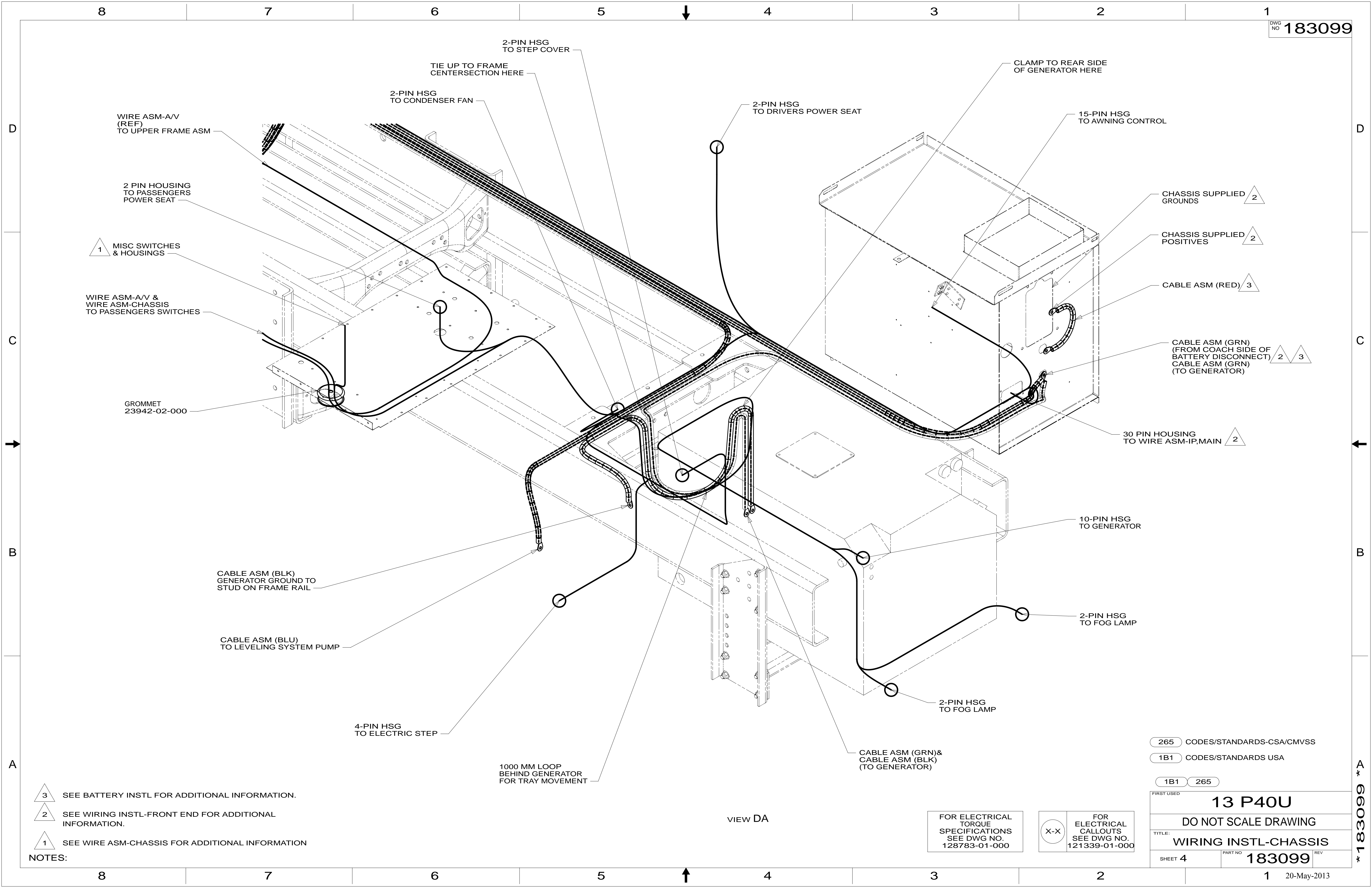
- NOTES:
- 4 REPLACE EXISTING SCREW TO PROPERLY ATTACH BREAKER TO BUSS BAR.
 - 3 SEE BATTERY INSTL FOR ADDITIONAL INFORMATION.
 - 2 FROM WIRE ASM-SLIDEOUT POWER.
 - 1 CIRCUITS BRANCH FROM WIRE ASM-CHASSIS.

FOR ELECTRICAL TORQUE SPECIFICATIONS SEE DWG NO. 128783-01-000

FOR ELECTRICAL CALLOUTS SEE DWG NO. 121339-01-000

265	CODES/STANDARDS-CSA/CMVSS
1B1	CODES/STANDARDS USA
1B1	265
FIRST USED	
13 P40U	
DO NOT SCALE DRAWING	
TITLE: WIRING INSTL-CHASSIS	
SHEET 3	PART NO. 183099 REV
20-May-2013	

* 183099



- NOTES:
- 3 SEE BATTERY INSTL FOR ADDITIONAL INFORMATION.
 - 2 SEE WIRING INSTL-FRONT END FOR ADDITIONAL INFORMATION.
 - 1 SEE WIRE ASM-CHASSIS FOR ADDITIONAL INFORMATION

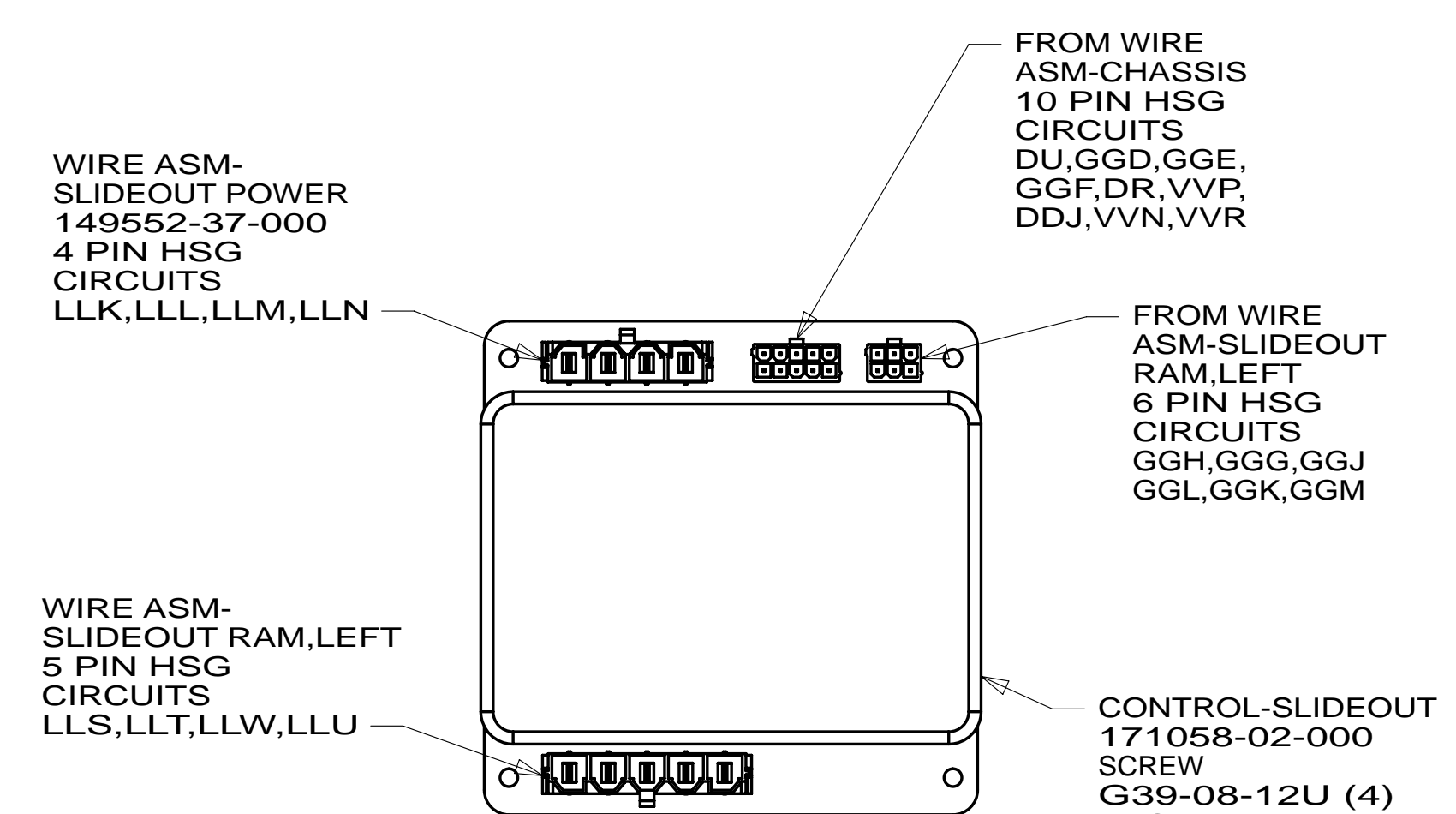
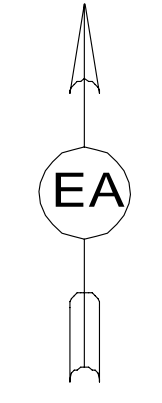
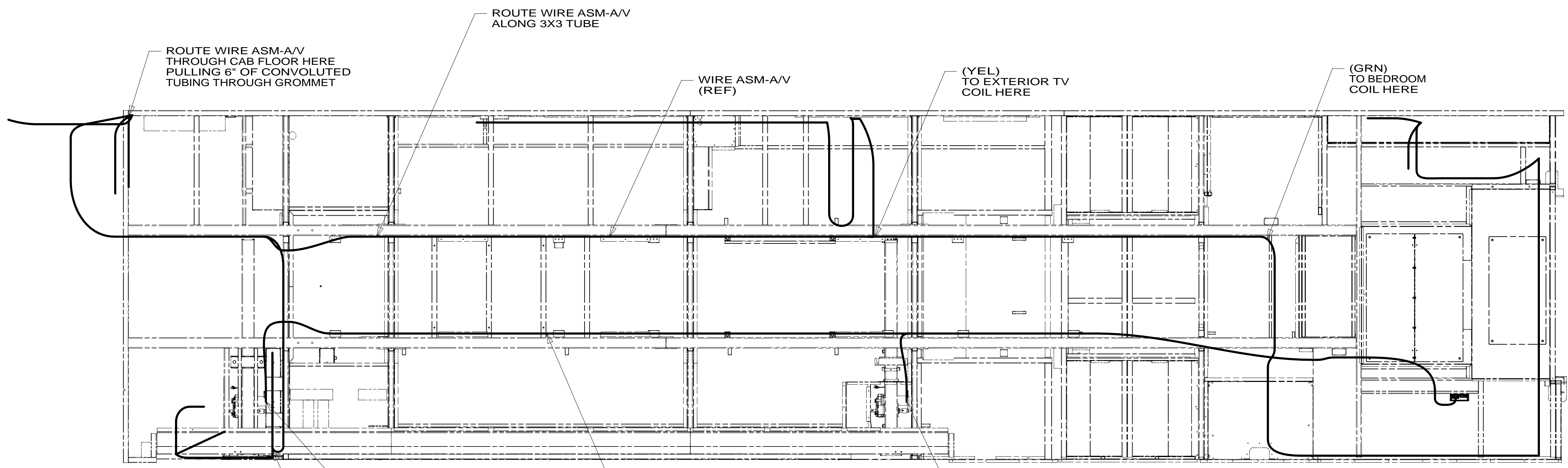
- 265 CODES/STANDARDS-CSA/CMVSS
- 1B1 CODES/STANDARDS USA
- 1B1 265

FOR ELECTRICAL TORQUE SPECIFICATIONS SEE DWG NO. 128783-01-000

FOR ELECTRICAL CALLOUTS SEE DWG NO. 121339-01-000

FIRST USED	
13 P40U	
DO NOT SCALE DRAWING	
TITLE: WIRING INSTL-CHASSIS	
SHEET 4	PART NO 183099 REV

* 183099 A *



VIEW EA

1. ALL WIRES TO BE CLAMPED WITH 10495-01-000 OR WIRE TIE 8343-02-000 EVERY 600MM, UNLESS OTHERWISE SPECIFIED.

NOTES:

265 CODES/STANDARDS-CSA/CMVSS

1B1 CODES/STANDARDS USA

1B1 265

FIRST USED
13 P40U

DO NOT SCALE DRAWING

TITLE: **WIRING INSTL-CHASSIS**

SHEET 5 PART NO **183099** REV

FOR ELECTRICAL TORQUE SPECIFICATIONS SEE DWG NO. 128783-01-000

FOR ELECTRICAL CALLOUTS SEE DWG NO. 121339-01-000

* 183099 * A