



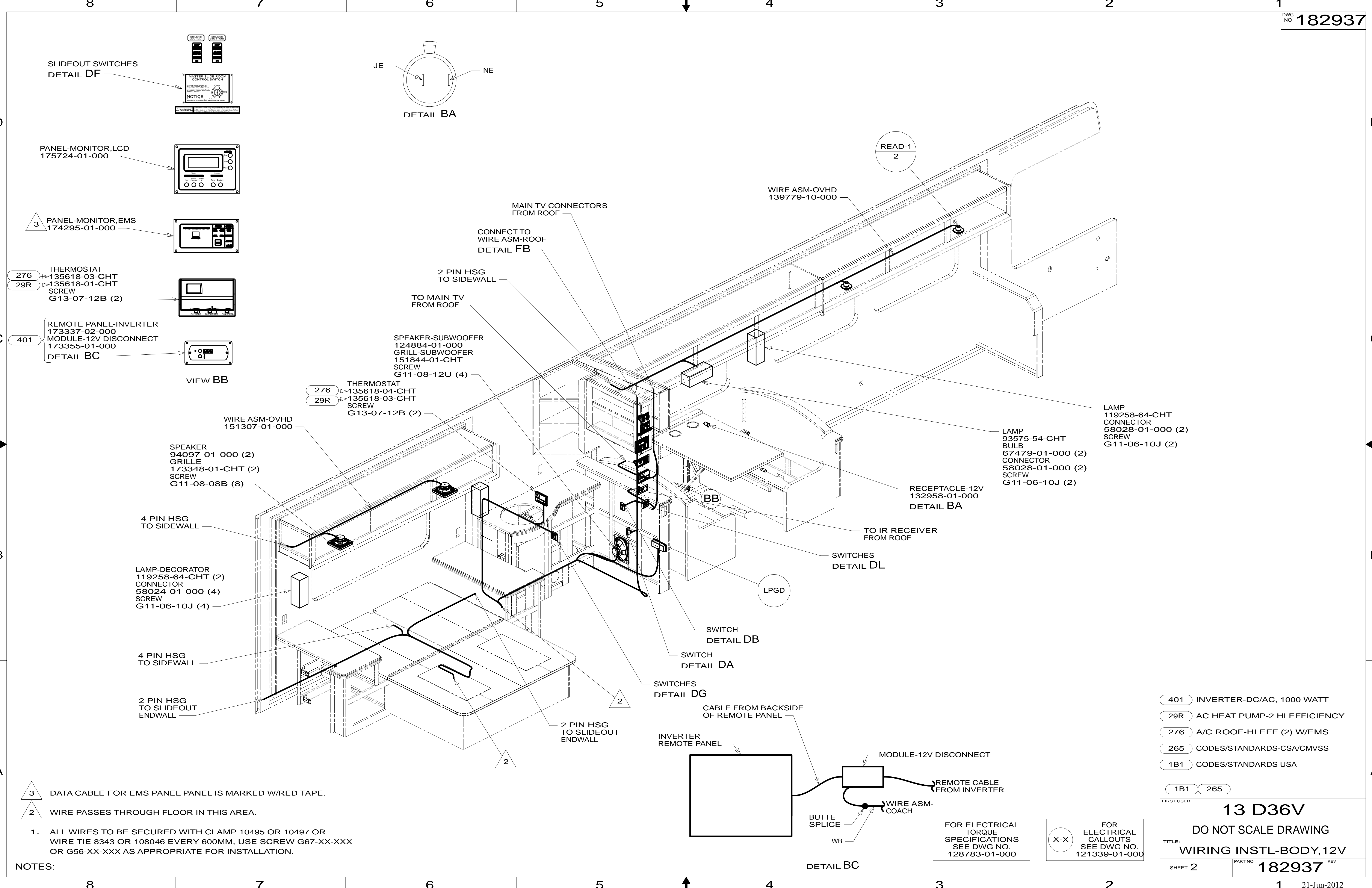
DANGER

Danger of electrical shock, burns or death. Always remove all power sources before attempting any repair, service or diagnostic work. Power can be present from shore power, generator, inverter or battery. All power sources must be disabled and secured before performing any service.

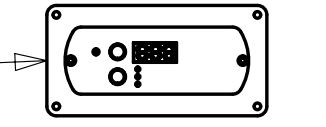
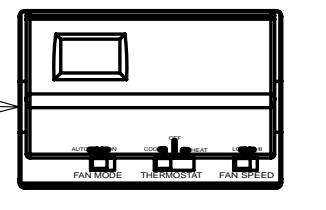
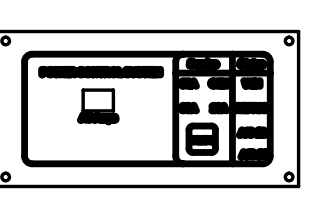
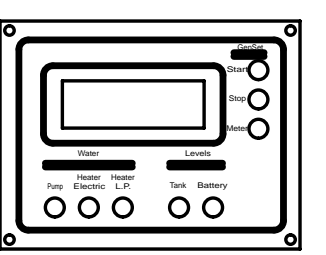
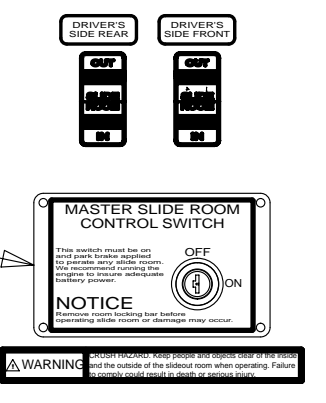


CAUTION

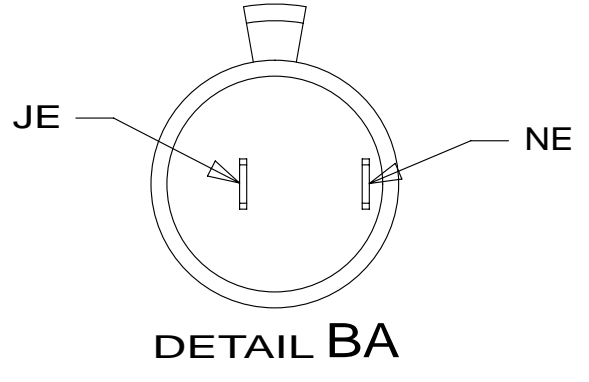
If you lack the skills, tools or equipment to perform diagnostic or repair work leave such work to an authorized Winnebago Industries dealer or other qualified shop.



- SLIDEOUT SWITCHES
DETAIL DF
- PANEL-MONITOR,LCD
175724-01-000
- 3 PANEL-MONITOR,EMS
174295-01-000
- 276 THERMOSTAT
135618-03-CHT
29R 135618-01-CHT
SCREW
G13-07-12B (2)
- 401 REMOTE PANEL-INVERTER
173337-02-000
MODULE-12V DISCONNECT
173355-01-000
DETAIL BC



VIEW BB



DETAIL BA

- 276 THERMOSTAT
135618-04-CHT
29R 135618-03-CHT
SCREW
G13-07-12B (2)

- 151307-01-000 WIRE ASM-OVHD
- 94097-01-000 (2) SPEAKER
173348-01-CHT (2) GRILLE
SCREW
G11-08-08B (8)

- 119258-64-CHT (2) LAMP-DECORATOR
58024-01-000 (4) CONNECTOR
SCREW
G11-06-10J (4)

- 4 PIN HSG TO SIDEWALL
- 4 PIN HSG TO SIDEWALL
- 2 PIN HSG TO SLIDEOUT
ENDWALL

- 3 DATA CABLE FOR EMS PANEL IS MARKED W/RED TAPE.
- 2 WIRE PASSES THROUGH FLOOR IN THIS AREA.

1. ALL WIRES TO BE SECURED WITH CLAMP 10495 OR 10497 OR WIRE TIE 8343 OR 108046 EVERY 600MM, USE SCREW G67-XX-XXX OR G56-XX-XXX AS APPROPRIATE FOR INSTALLATION.

NOTES:

- 124884-01-000 SPEAKER-SUBWOOFER
151844-01-CHT GRILL-SUBWOOFER
SCREW
G11-08-12U (4)
- 139779-10-000 WIRE ASM-OVHD
- 132958-01-000 RECEPTACLE-12V
DETAIL BA

- 276 THERMOSTAT
135618-04-CHT
29R 135618-03-CHT
SCREW
G13-07-12B (2)

- 94097-01-000 (2) SPEAKER
173348-01-CHT (2) GRILLE
SCREW
G11-08-08B (8)

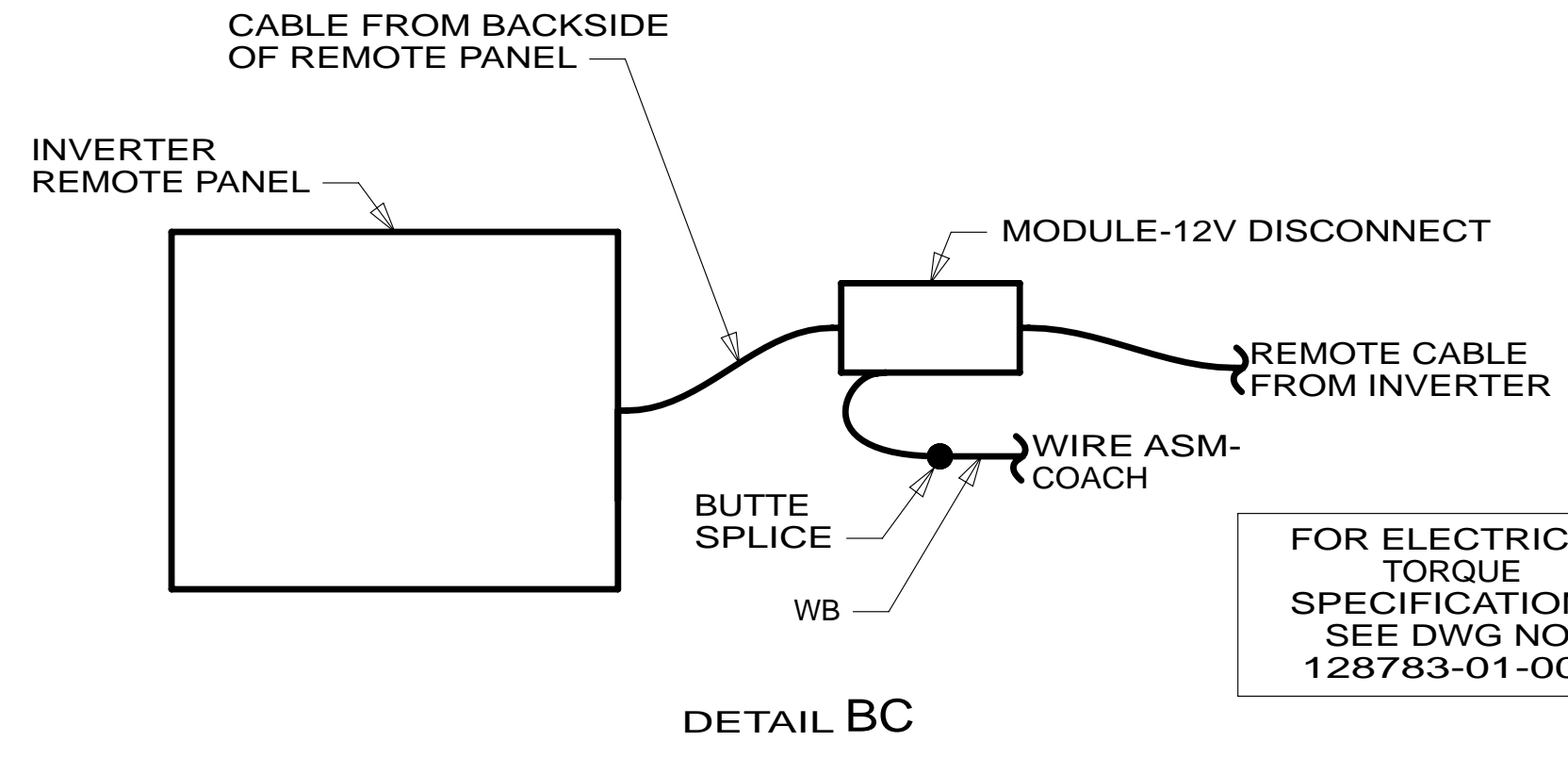
- 119258-64-CHT (2) LAMP-DECORATOR
58024-01-000 (4) CONNECTOR
SCREW
G11-06-10J (4)

- 4 PIN HSG TO SIDEWALL
- 4 PIN HSG TO SIDEWALL
- 2 PIN HSG TO SLIDEOUT
ENDWALL

- 3 DATA CABLE FOR EMS PANEL IS MARKED W/RED TAPE.
- 2 WIRE PASSES THROUGH FLOOR IN THIS AREA.

1. ALL WIRES TO BE SECURED WITH CLAMP 10495 OR 10497 OR WIRE TIE 8343 OR 108046 EVERY 600MM, USE SCREW G67-XX-XXX OR G56-XX-XXX AS APPROPRIATE FOR INSTALLATION.

NOTES:



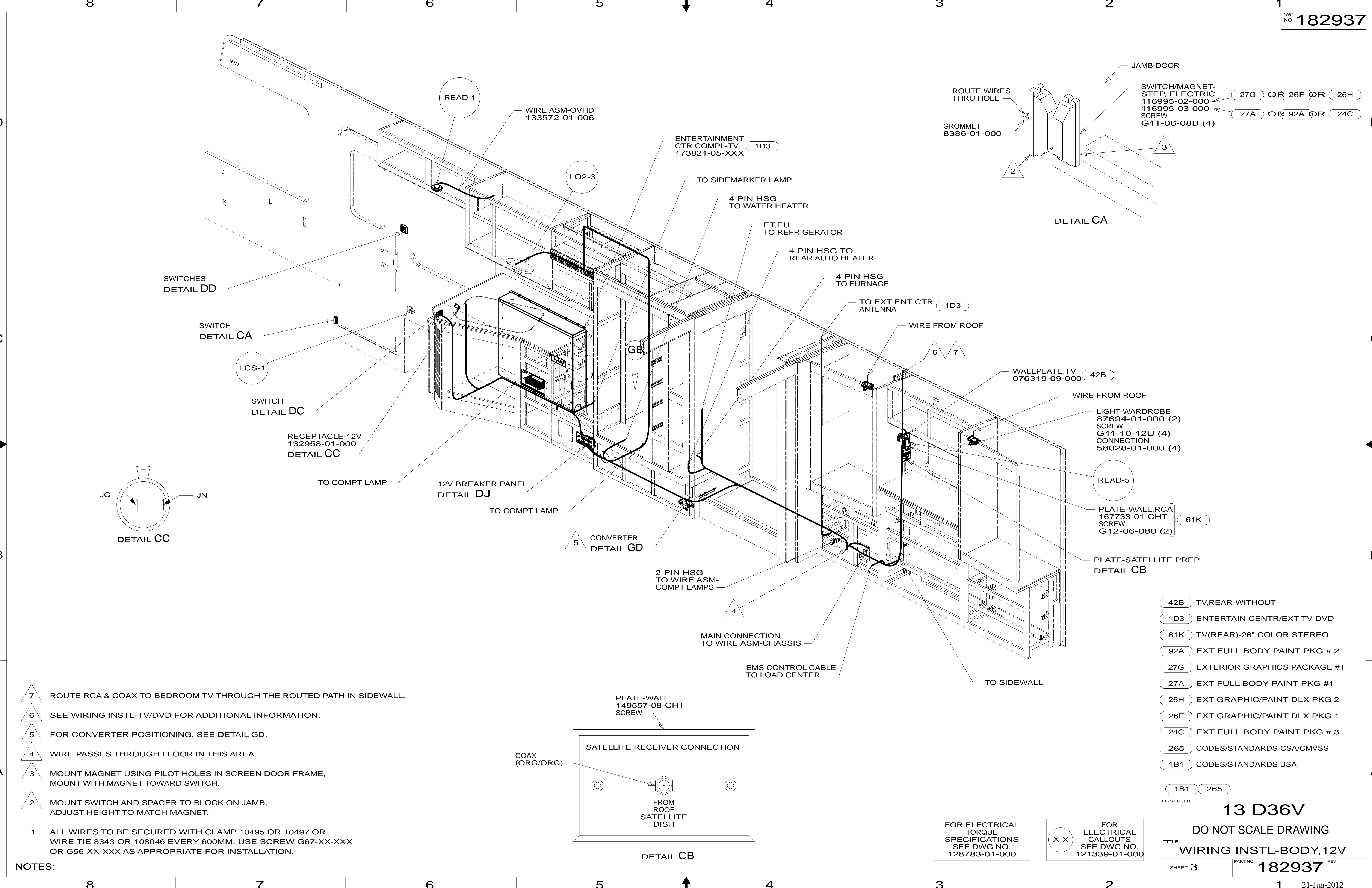
DETAIL BC

FOR ELECTRICAL TORQUE SPECIFICATIONS SEE DWG NO. 128783-01-000

FOR ELECTRICAL CALLOUTS SEE DWG NO. 121339-01-000

- 401 INVERTER-DC/AC, 1000 WATT
- 29R AC HEAT PUMP-2 HI EFFICIENCY
- 276 A/C ROOF-HI EFF (2) W/EMS
- 265 CODES/STANDARDS-CSA/CMVSS
- 1B1 CODES/STANDARDS USA

| | | | |
|------------------------------|---------|---------|-------------|
| FIRST USED | | 13 D36V | |
| DO NOT SCALE DRAWING | | | |
| TITLE: WIRING INSTL-BODY,12V | | | |
| SHEET 2 | PART NO | 182937 | REV |
| | | 1 | 21-Jun-2012 |



- 7 ROUTE RCA & COAX TO BEDROOM TV THROUGH THE ROUTED PATH IN SIDEWALL.
- 6 SEE WIRING INSTL-TV/DVD FOR ADDITIONAL INFORMATION.
- 5 FOR CONVERTER POSITIONING, SEE DETAIL GD.
- 4 WIRE PASSES THROUGH FLOOR IN THIS AREA.
- 3 MOUNT MAGNET USING PILOT HOLES IN SCREEN DOOR FRAME, MOUNT WITH MAGNET TOWARD SWITCH.
- 2 MOUNT SWITCH AND SPACER TO BLOCK ON JAMB, ADJUST HEIGHT TO MATCH MAGNET.

1. ALL WIRES TO BE SECURED WITH CLAMP 10495 OR 10497 OR WIRE TIE 8343 OR 108046 EVERY 600MM, USE SCREW G67-XX-XXX OR G56-XX-XXX AS APPROPRIATE FOR INSTALLATION.

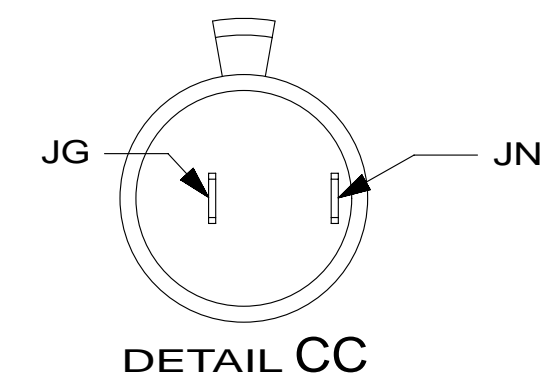
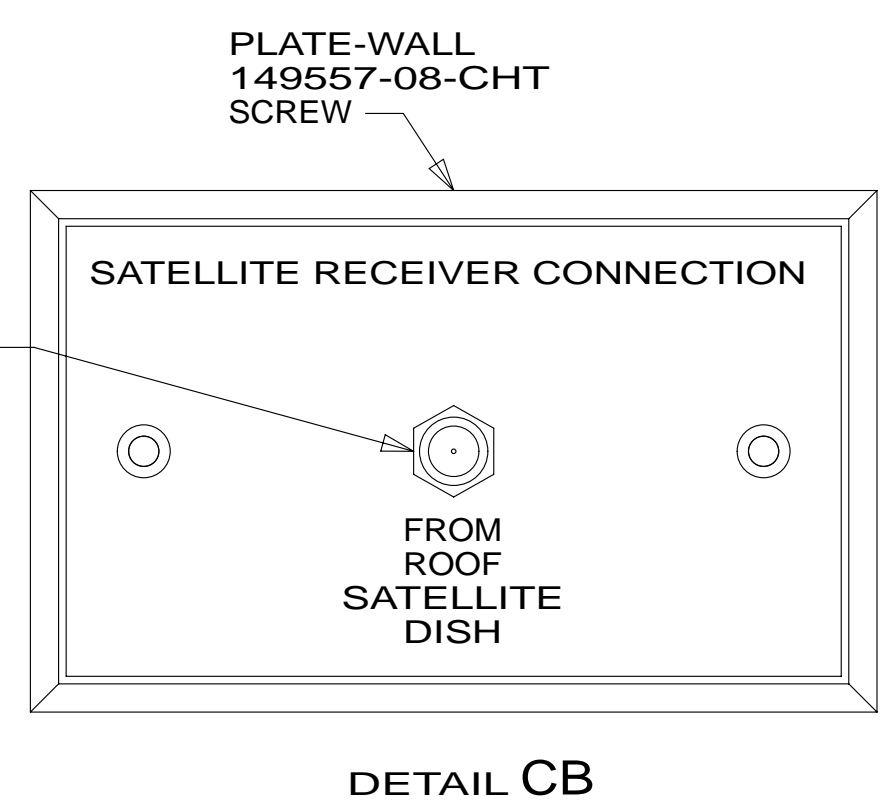
NOTES:

- 42B TV,REAR-WITHOUT
- 1D3 ENTERTAIN CENTR/EXT TV-DVD
- 61K TV(REAR)-26" COLOR STEREO
- 92A EXT FULL BODY PAINT PKG # 2
- 27G EXTERIOR GRAPHICS PACKAGE #1
- 27A EXT FULL BODY PAINT PKG #1
- 26H EXT GRAPHIC/PAINT-DLX PKG 2
- 26F EXT GRAPHIC/PAINT DLX PKG 1
- 24C EXT FULL BODY PAINT PKG # 3
- 265 CODES/STANDARDS-CSA/CMVSS
- 1B1 CODES/STANDARDS USA

| | |
|--------------------------------------|---------------------------|
| 1B1 | 265 |
| FIRST USED | |
| 13 D36V | |
| DO NOT SCALE DRAWING | |
| TITLE: WIRING INSTL-BODY, 12V | |
| SHEET 3 | PART NO 182937 REV |
| 21-Jun-2012 | |

FOR ELECTRICAL TORQUE SPECIFICATIONS SEE DWG NO. 128783-01-000

FOR ELECTRICAL CALLOUTS SEE DWG NO. 121339-01-000



SWITCHES
DETAIL DD

SWITCH
DETAIL CA

LCS-1

SWITCH
DETAIL DC

RECEPTACLE-12V
132958-01-000
DETAIL CC

TO COMPT LAMP

12V BREAKER PANEL
DETAIL DJ

TO COMPT LAMP

5 CONVERTER
DETAIL GD

2-PIN HSG
TO WIRE ASM-
COMPT LAMPS

4 MAIN CONNECTION
TO WIRE ASM-CHASSIS

EMS CONTROL CABLE
TO LOAD CENTER

TO SIDEWALL

ROUTE WIRES
THRU HOLE

GROMMET
8386-01-000

2

DETAIL CA

JAMB-DOOR

SWITCH/MAGNET-
STEP, ELECTRIC
116995-02-000
116995-03-000
SCREW
G11-06-08B (4)

- 27G OR 26F OR 26H
- 27A OR 92A OR 24C

3

ENTERTAINMENT
CTR COMPL-TV
173821-05-XXX
1D3

TO SIDEMARKER LAMP

4 PIN HSG
TO WATER HEATER

ET,EU
TO REFRIGERATOR

4 PIN HSG
TO REAR AUTO HEATER

4 PIN HSG
TO FURNACE

TO EXT ENT CTR
ANTENNA
1D3

WIRE FROM ROOF

6 7

WALLPLATE,TV
076319-09-000
42B

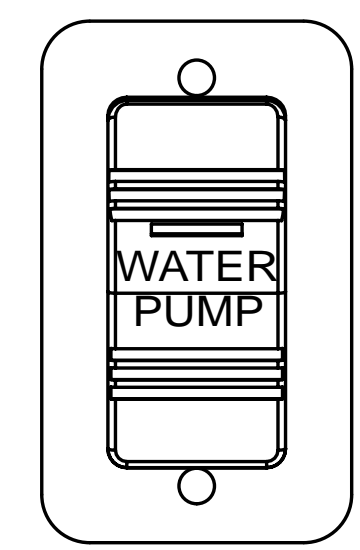
WIRE FROM ROOF

LIGHT-WARDROBE
87694-01-000 (2)
SCREW
G11-10-12U (4)
CONNECTION
58028-01-000 (4)

READ-5

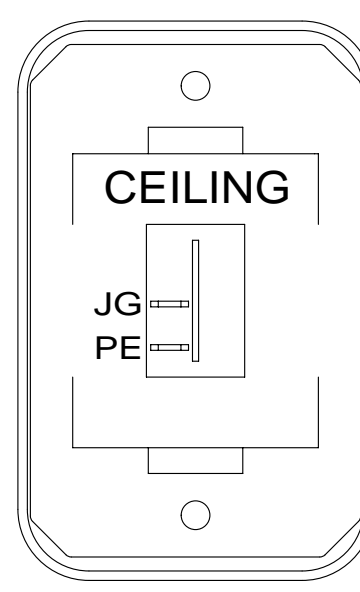
PLATE-WALL,RCA
167733-01-CHT
SCREW
G12-06-080 (2)
61K

PLATE-SATELLITE PREP
DETAIL CB



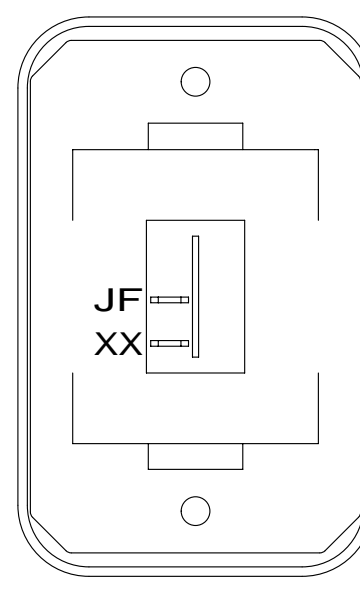
SWITCH-PUMP
108357-21-000
ACTUATOR
108356-23-CHT
PLATE
098351-07-CHT
SCREW
G11-06-10U (2)

DETAIL DA



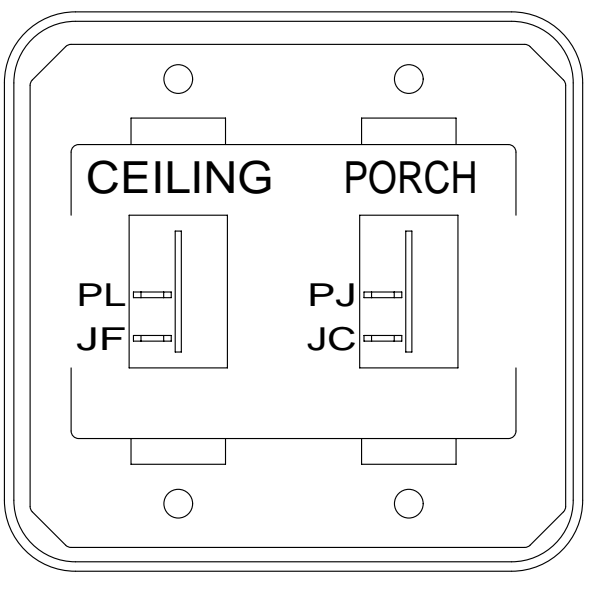
SWITCH-ROCKER
135740-01-CHT
SWITCH-BASE
135741-01-CHT
SWITCH-BEZEL
135742-07-CHT
SCREW
G11-08-08U (2)

DETAIL DB



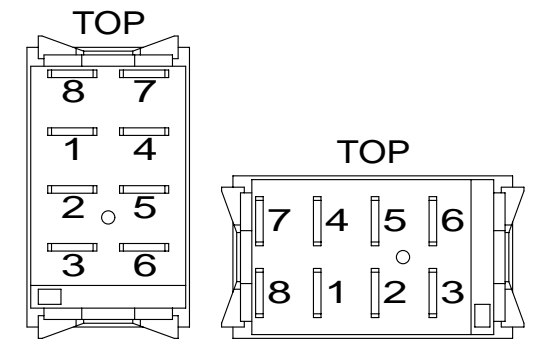
SWITCH-ROCKER
135740-01-CHT
SWITCH-BASE
135741-01-CHT
SWITCH-BEZEL
135742-01-CHT
SCREW
G11-08-08U (2)

DETAIL DC

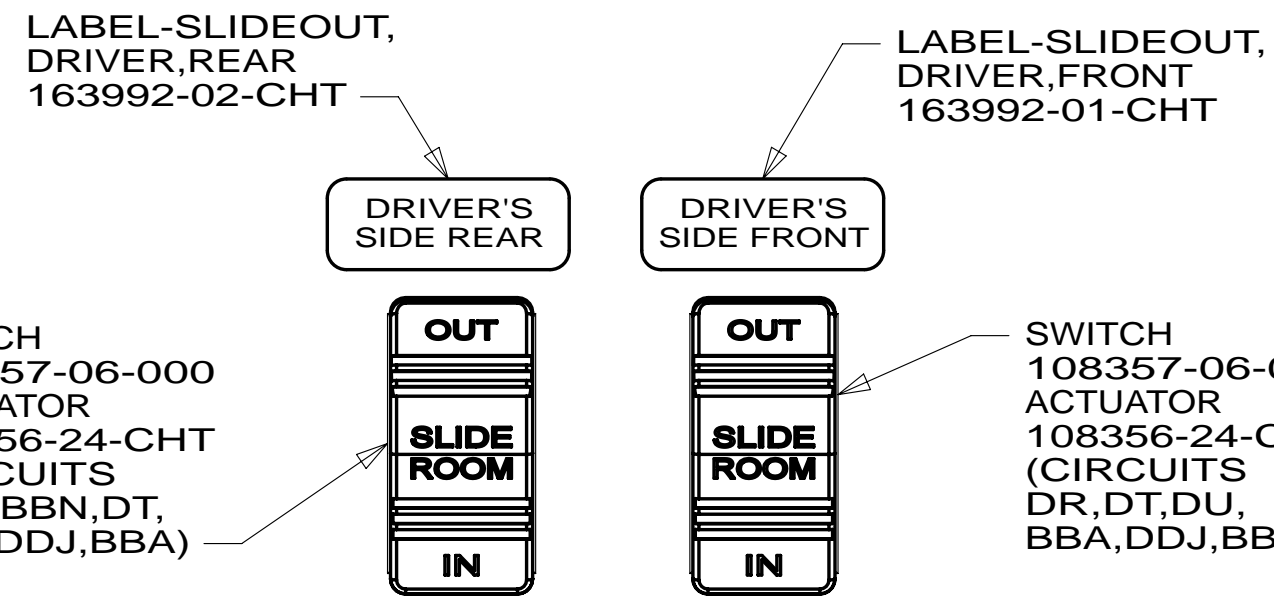


SWITCH-ROCKER
135740-01-CHT (2)
SWITCH-BASE
135741-02-CHT
SWITCH-BEZEL
135742-19-CHT
SCREW
G11-08-08U (4)

DETAIL DD

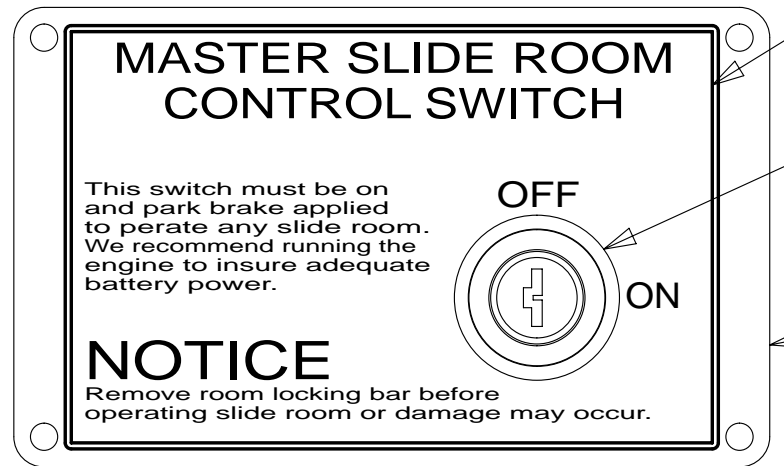


DETAIL DE



SWITCH
108357-06-000
ACTUATOR
108356-24-CHT
(CIRCUITS
BBM, BBN, DT,
BBA, DDJ, BBA)

SWITCH
108357-06-000
ACTUATOR
108356-24-CHT
(CIRCUITS
DR, DT, DU,
BBA, DDJ, BBA)



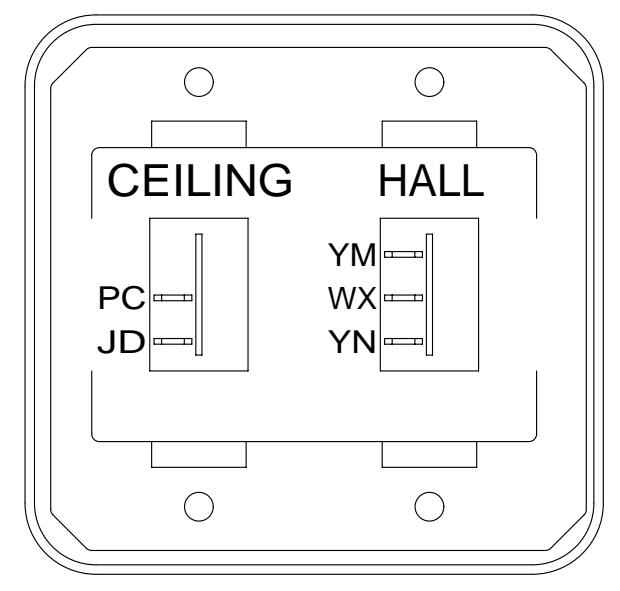
MASTER SLIDE ROOM
CONTROL SWITCH

This switch must be on
and park brake applied
to operate any slide room.
We recommend running the
engine to insure adequate
battery power.

NOTICE
Remove room locking bar before
operating slide room or damage may occur.

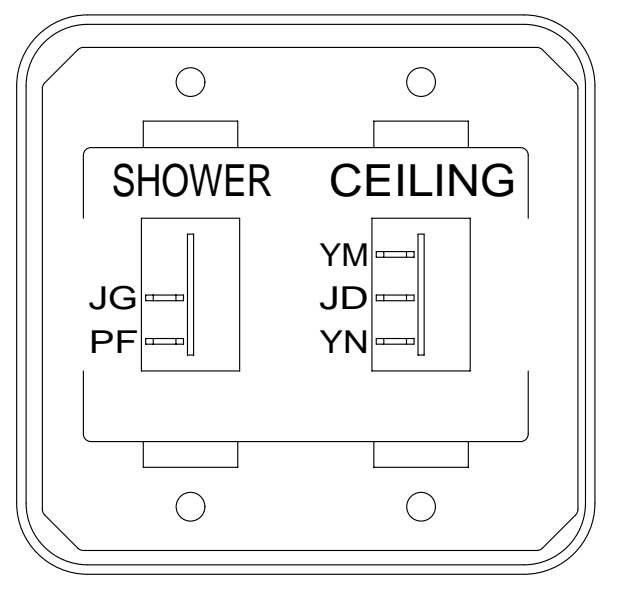
WARNING CRUSH HAZARD. Keep people and objects clear of the inside
and the outside of the slide room when operating. Failure to
comply could result in death or serious injury.

DETAIL DF



SWITCH-ROCKER
135740-01-CHT
135740-02-CHT
SWITCH-BASE
135741-02-CHT
SWITCH-BEZEL
135742-16-CHT
SCREW
G11-08-08U (4)

DETAIL DG



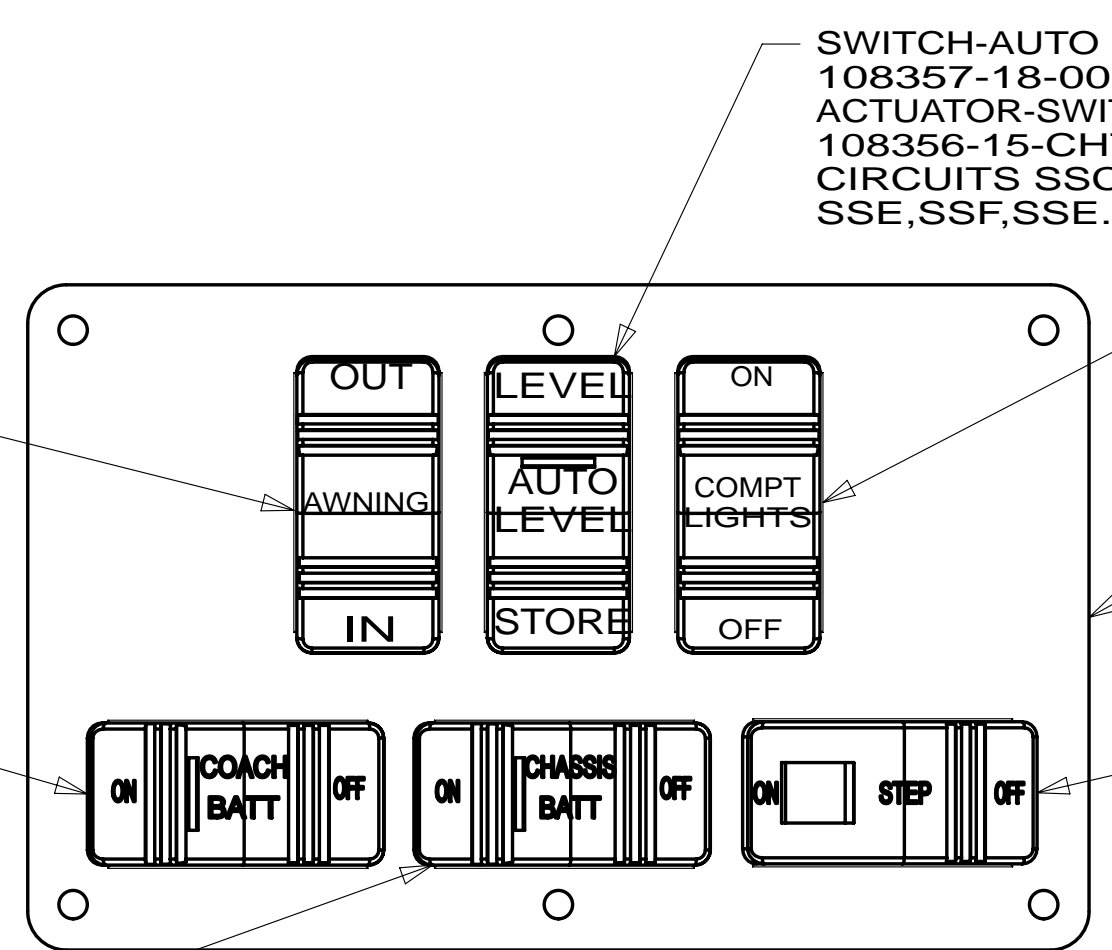
SWITCH-ROCKER
135740-01-CHT
135740-02-CHT
SWITCH-BASE
135741-02-CHT
SWITCH-BEZEL
135742-15-CHT
SCREW
G11-08-08U (4)

DETAIL DL

SWITCH-AWNING
108357-06-000
ACTUATOR-SWITCH
108356-12-CHT
CIRCUITS
FFD, FFR, FFE,
FFE, JJR, FFD

SWITCH-COACH BATT
108357-18-000
ACTUATOR-SWITCH
108356-19-CHT
CIRCUITS KF, LG, LJ,
, LJ, LH, KF, KF, LK

SWITCH-CHASSIS BATTERY
108357-18-000
ACTUATOR-SWITCH
108356-20-CHT
CIRCUITS UUC, TTY, UUB
UUB, TTZ, UUC, UUC, UUA



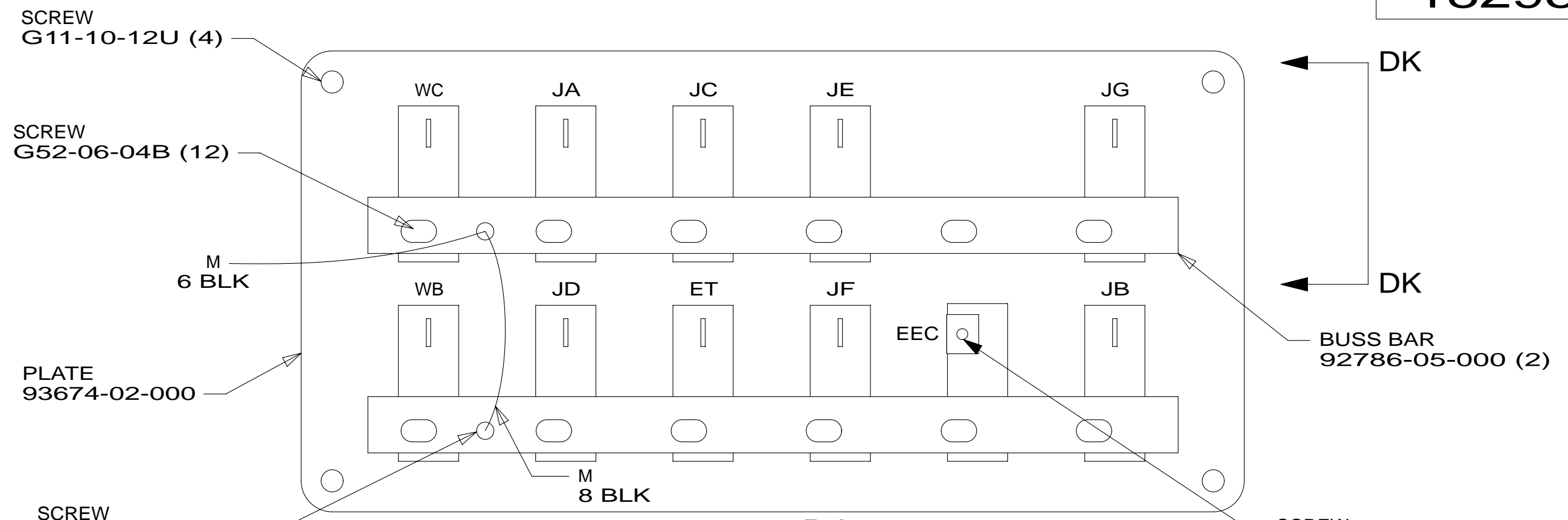
SWITCH-AUTO LEVEL
108357-18-000
ACTUATOR-SWITCH
108356-15-CHT
CIRCUITS SSC, SSD,
SSE, SSF, SSE.

SWITCH-COMPT LIGHTS
108357-01-000
ACTUATOR-SWITCH
108356-14-CHT
CIRCUITS WC, NW

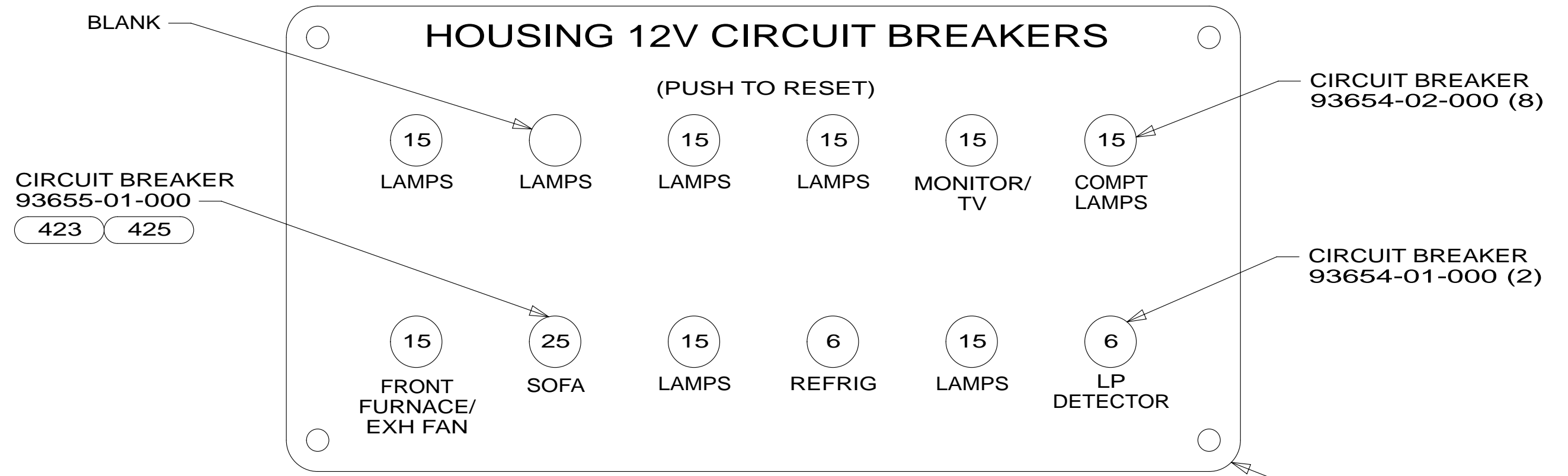
PLATE-SWITCH
158431-03-CHT
SCREW
G11-06-10U (6)

SWITCH-STEP
108357-19-000
CIRCUITS ER, ES

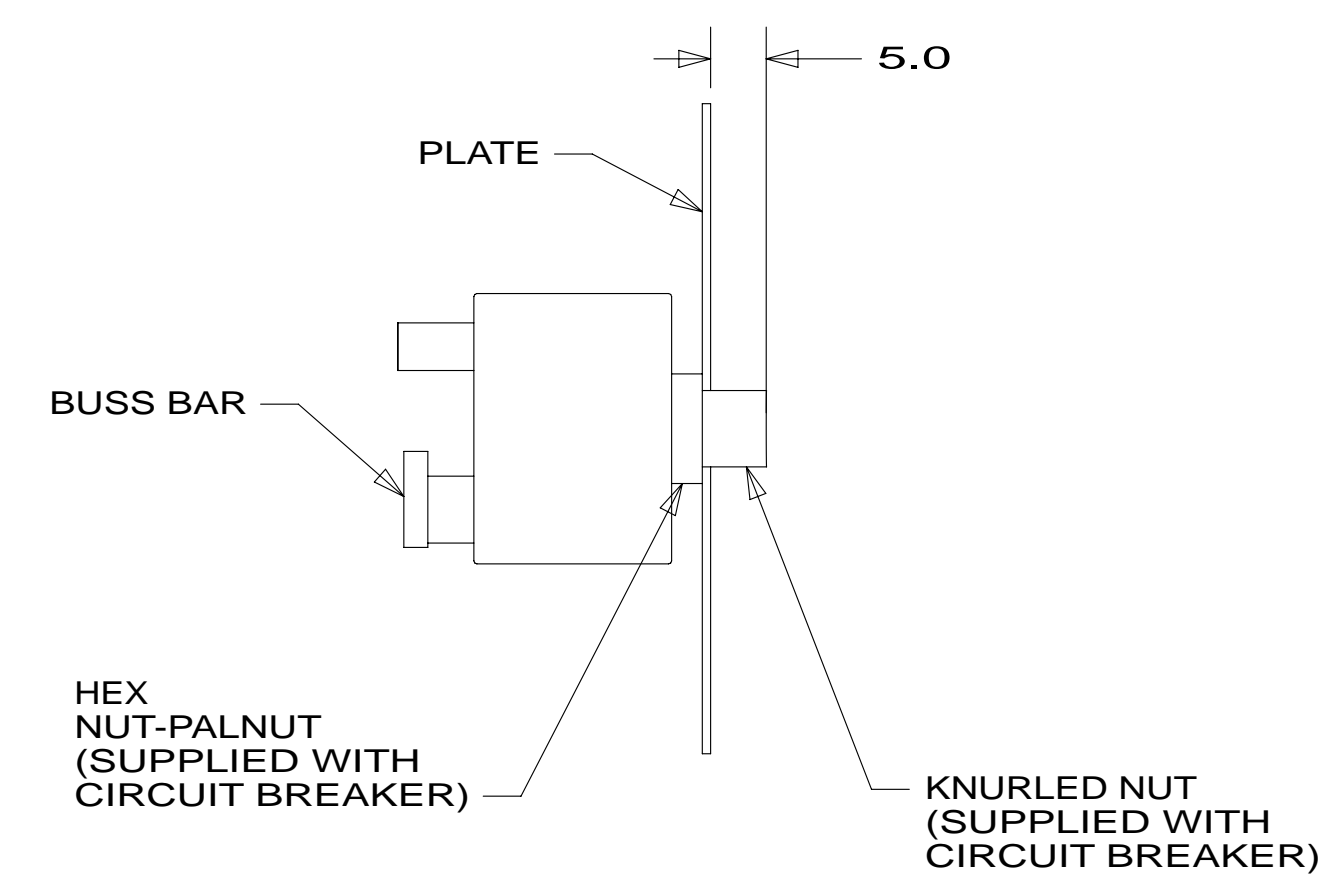
DETAIL DH



DETAIL DJ
(BACK VIEW)



DETAIL DJ
(FRONT VIEW)



DETAIL DK

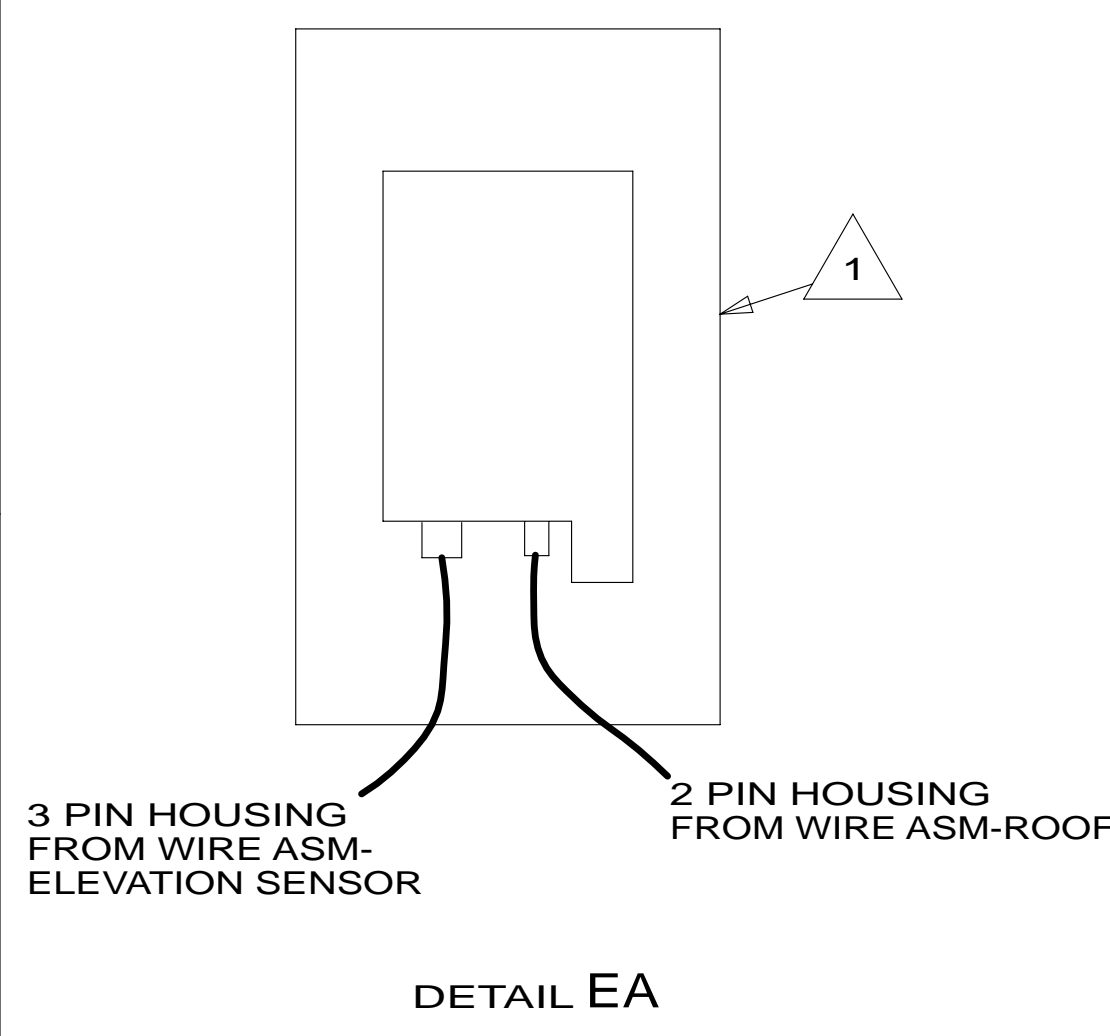
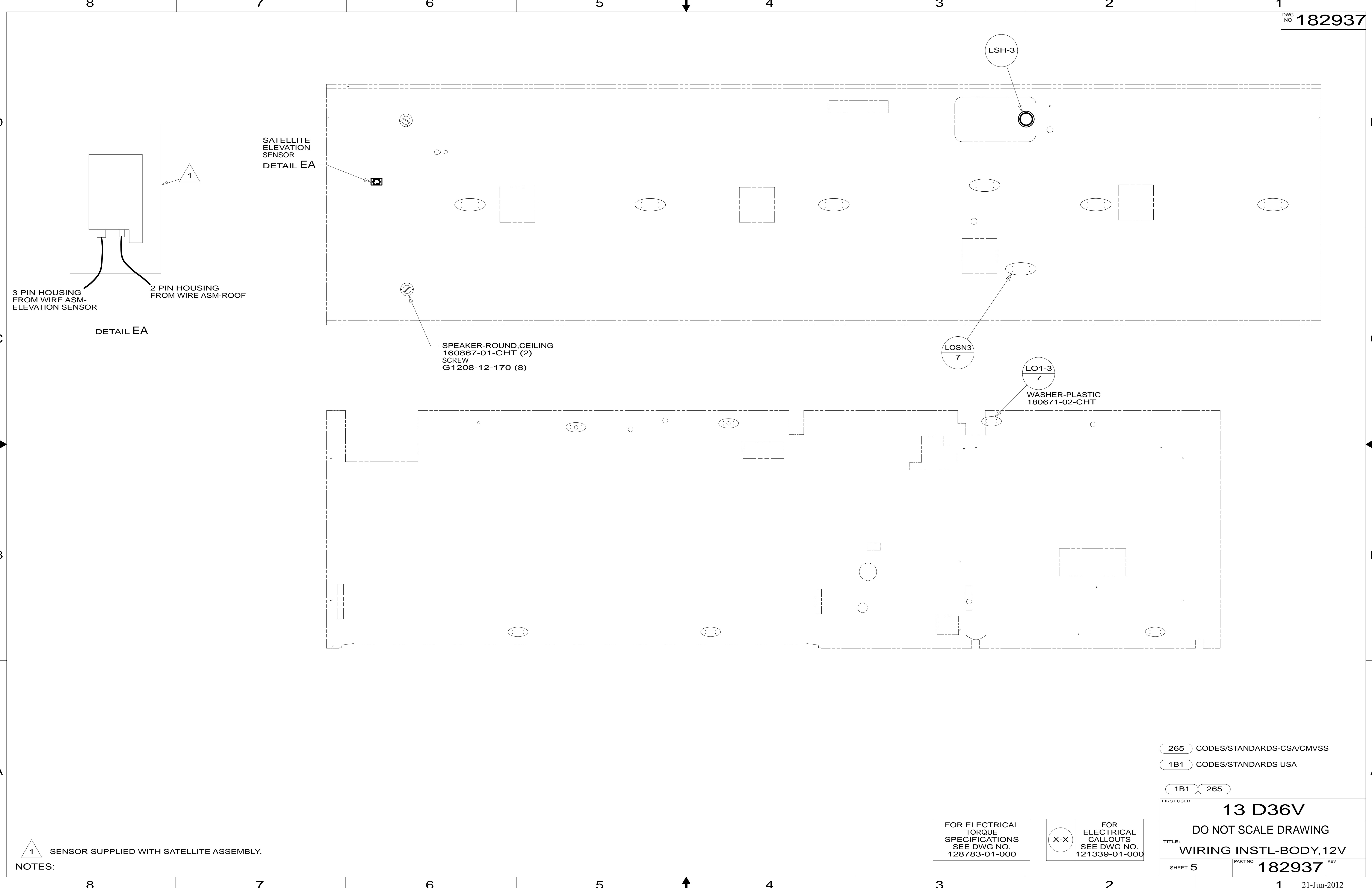
- 423 RESTEASY-SECTION-UL LTR DUAL
- 425 RESTEASY-SECTIONAL-ULTRALEAT
- 52N AWNING - PATIO, ELECTRIC
- 265 CODES/STANDARDS-CSA/CMVSS
- 1B1 CODES/STANDARDS USA

| | |
|--------------------------------------|---------------------------|
| 1B1 | 265 |
| FIRST USED | |
| 13 D36V | |
| DO NOT SCALE DRAWING | |
| TITLE: WIRING INSTL-BODY, 12V | |
| SHEET 4 | PART NO 182937 REV |

FOR ELECTRICAL
TORQUE
SPECIFICATIONS
SEE DWG NO.
128783-01-000

FOR
ELECTRICAL
CALLOUTS
SEE DWG NO.
121339-01-000

NOTES:
1 FOR SWITCH ORIENTATION SEE DETAIL DE



SATELLITE ELEVATION SENSOR
DETAIL EA

3 PIN HOUSING FROM WIRE ASM-ELEVATION SENSOR
2 PIN HOUSING FROM WIRE ASM-ROOF

DETAIL EA

SPEAKER-ROUND, CEILING
160867-01-CHT (2)
SCREW
G1208-12-170 (8)

LOS3
7

LO1-3
7

WASHER-PLASTIC
180671-02-CHT

NOTES:
1 SENSOR SUPPLIED WITH SATELLITE ASSEMBLY.

FOR ELECTRICAL TORQUE SPECIFICATIONS SEE DWG NO. 128783-01-000

FOR ELECTRICAL CALLOUTS SEE DWG NO. 121339-01-000

265 CODES/STANDARDS-CSA/CMVSS

1B1 CODES/STANDARDS USA

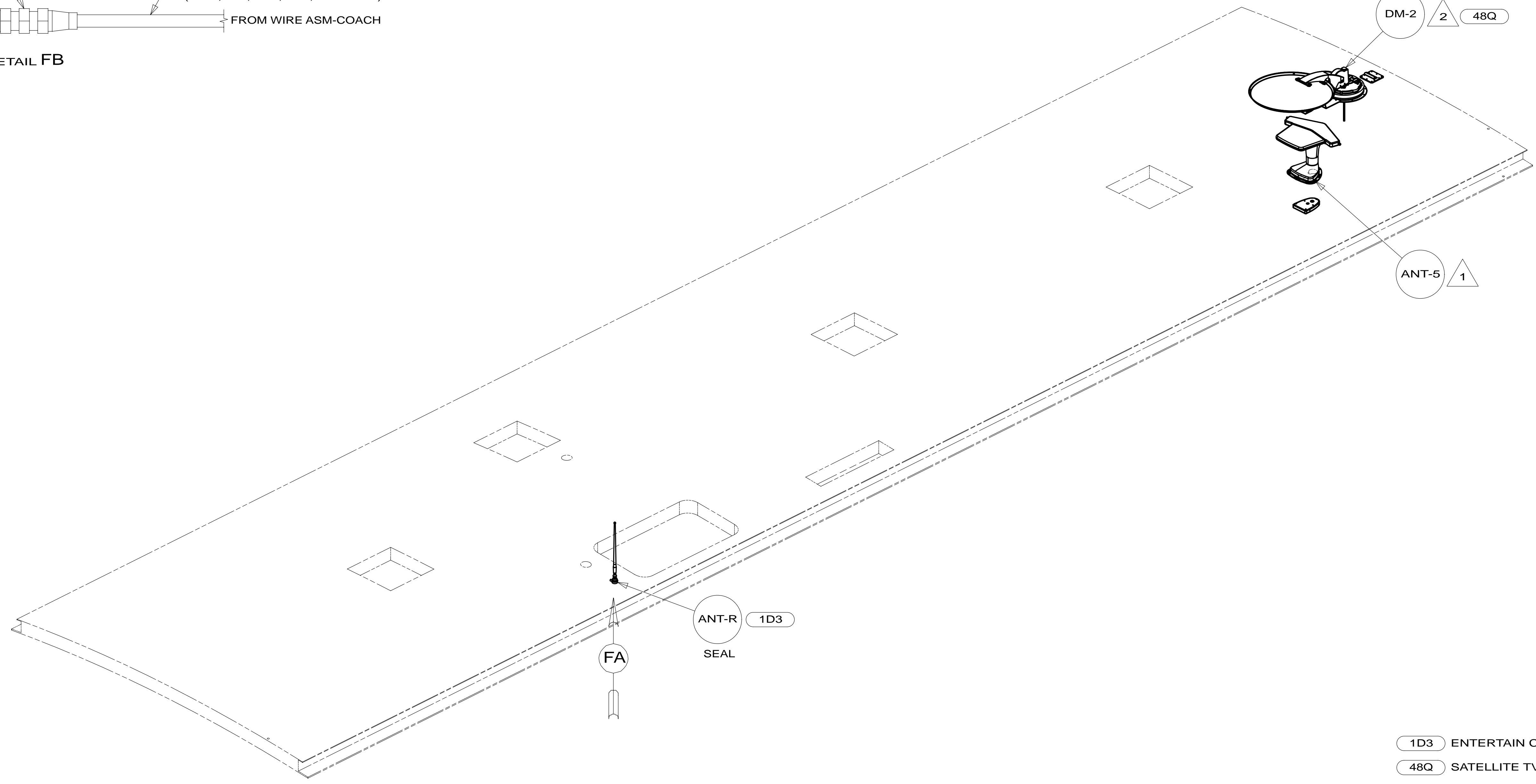
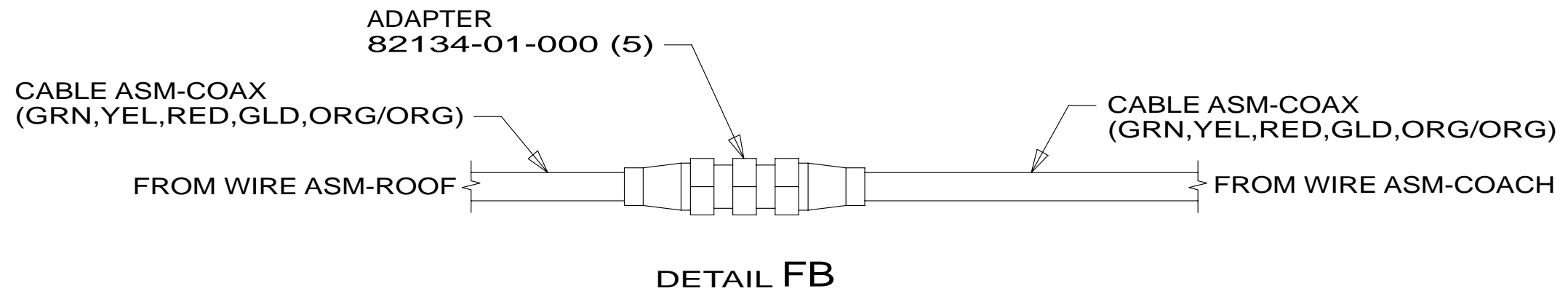
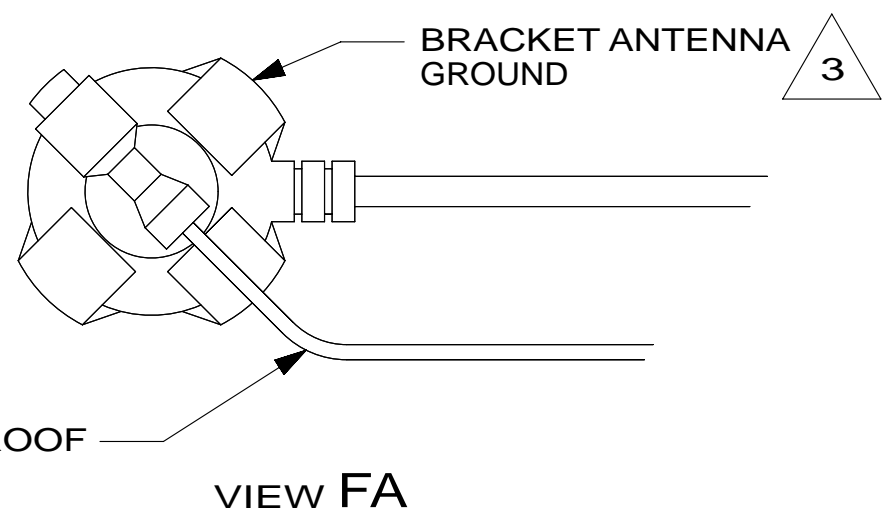
1B1 265

FIRST USED 13 D36V

DO NOT SCALE DRAWING

TITLE: WIRING INSTL-BODY, 12V

SHEET 5 PART NO 182937 REV



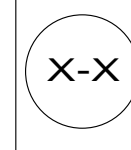
- NOTES:
- 3 WRAP LEGS AROUND ANTENNA BASE.
 - 2 CONNECT THE ORANGE COAX FROM ROOF ASM TO ONE OF THE 2 GRAY COAX CABLES ON THE SATELLITE DISH, THE OTHER GRAY COAX IS NOT USED.
 - 1 SEE DWG 76319-01-000 FOR INSTALLATION INSTRUCTIONS.

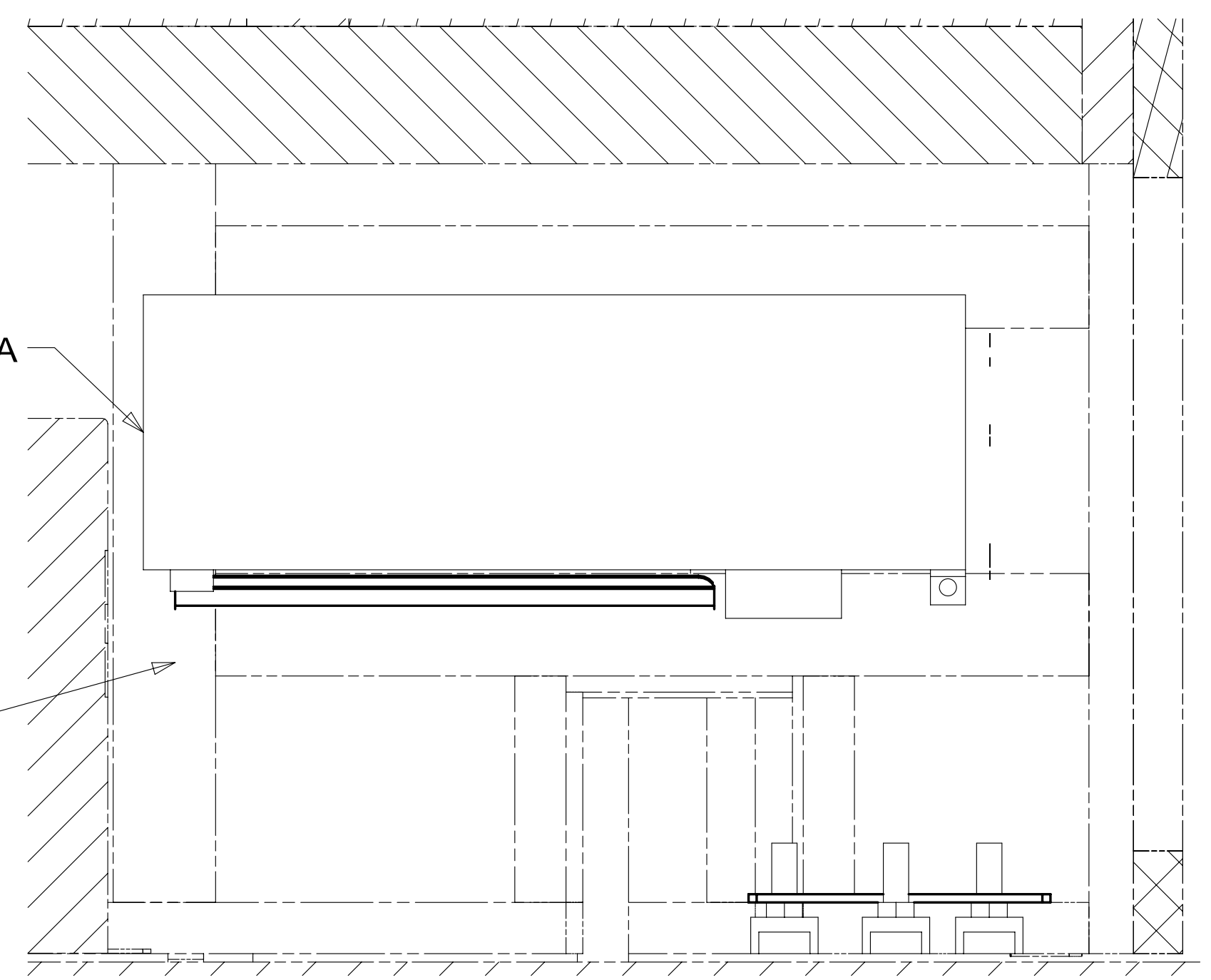
- 1D3 ENTERTAIN CENTR/EXT TV-DVD
- 48Q SATELLITE TV SYSTEM MANUAL
- 265 CODES/STANDARDS-CSA/CMVSS
- 1B1 CODES/STANDARDS USA

| | |
|-------------------------------------|---------------------------|
| FIRST USED | |
| 13 D36V | |
| DO NOT SCALE DRAWING | |
| TITLE: WIRING INSTL-BODY,12V | |
| SHEET 6 | PART NO 182937 REV |

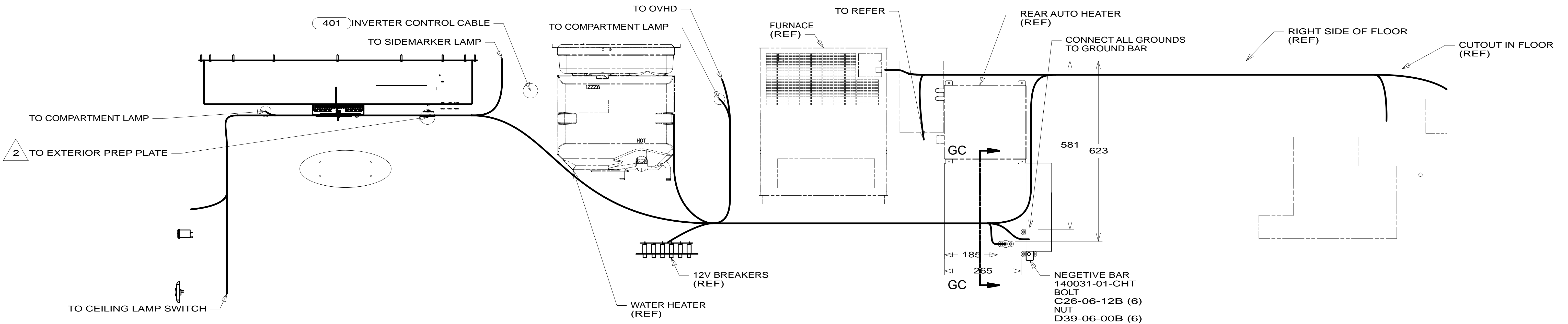
FOR ELECTRICAL TORQUE SPECIFICATIONS SEE DWG NO. 128783-01-000

FOR ELECTRICAL CALLOUTS SEE DWG NO. 121339-01-000

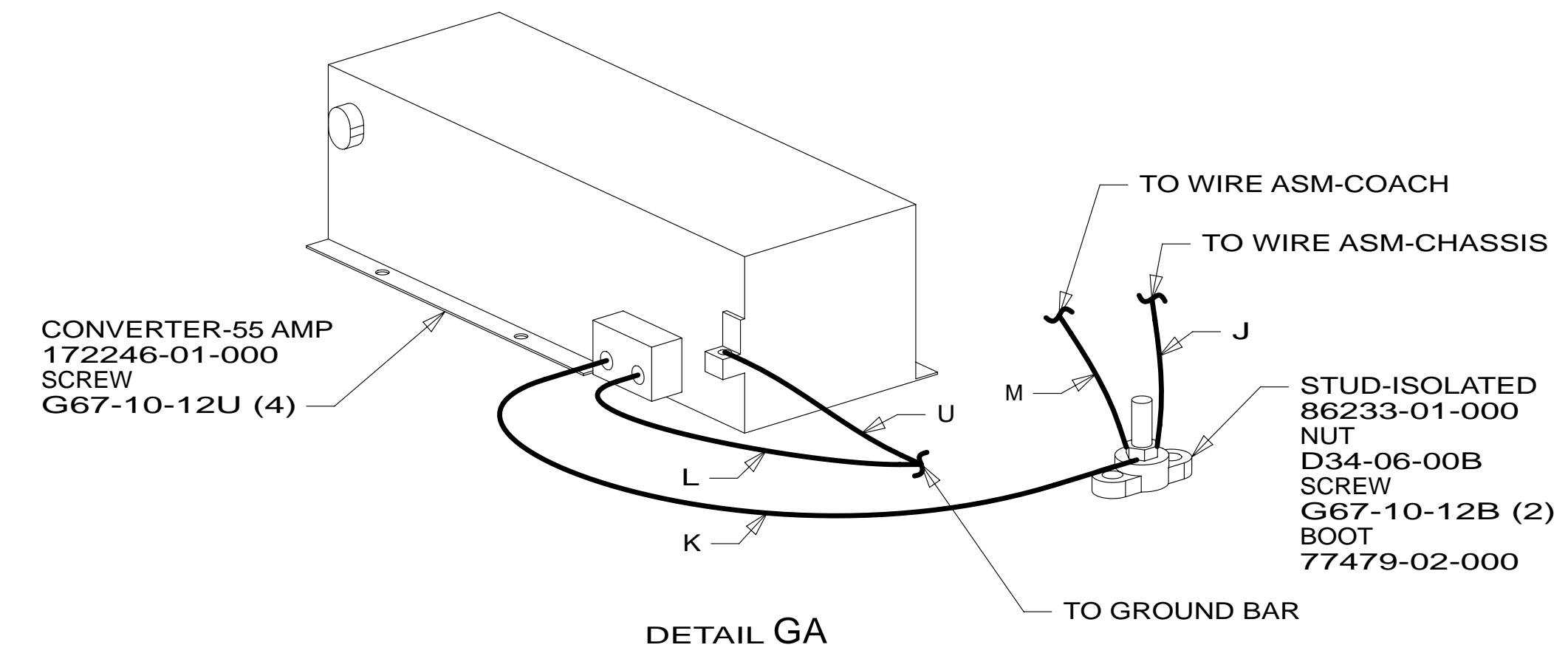




VIEW GC



VIEW GB



- 401 INVERTER-DC/AC, 1000 WATT
- 1D3 ENTERTAIN CENTR/EXT TV-DVD
- 265 CODES/STANDARDS-CSA/CMVSS
- 1B1 CODES/STANDARDS USA

| | |
|---|--------------------|
| FIRST USED | |
| 13 D36V | |
| DO NOT SCALE DRAWING | |
| TITLE: WIRING INSTL-BODY, 12V | |
| SHEET 7 | PART NO 182937 REV |

FOR ELECTRICAL TORQUE SPECIFICATIONS SEE DWG NO. 128783-01-000

FOR ELECTRICAL CALLOUTS SEE DWG NO. 121339-01-000

- NOTES:
- 2 WITHOUT 1D3
 - 1 USE WIRE TIE 8343-02-000 AND SECURE WIRE HARNESS TO WIRE TRAYS.