



**DANGER**

**Danger of electrical shock, burns or death.** Always remove all power sources before attempting any repair, service or diagnostic work. Power can be present from shore power, generator, inverter or battery. All power sources must be disabled and secured before performing any service.

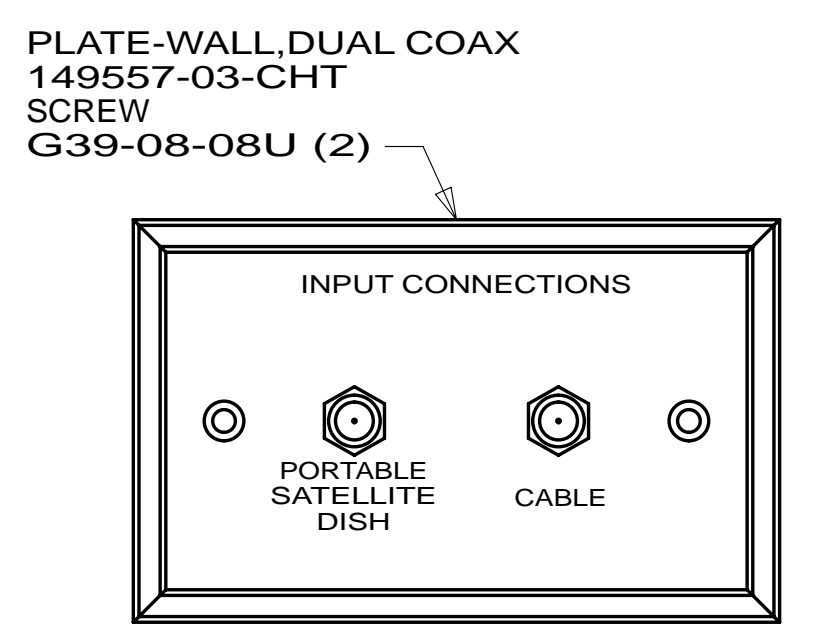
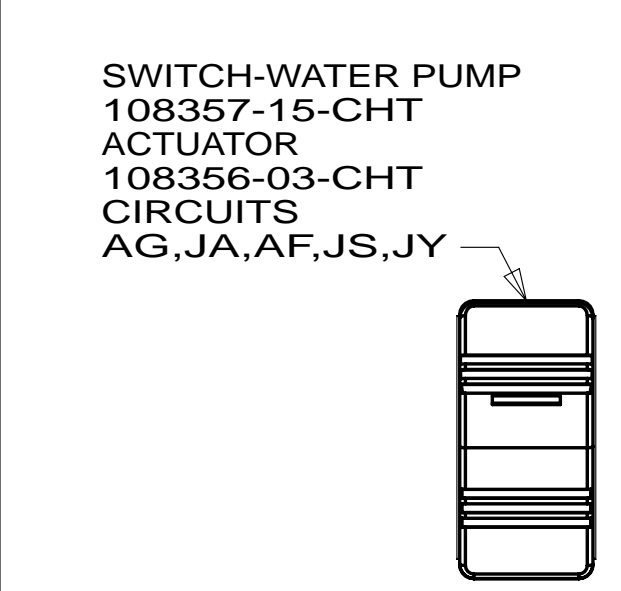


**CAUTION**

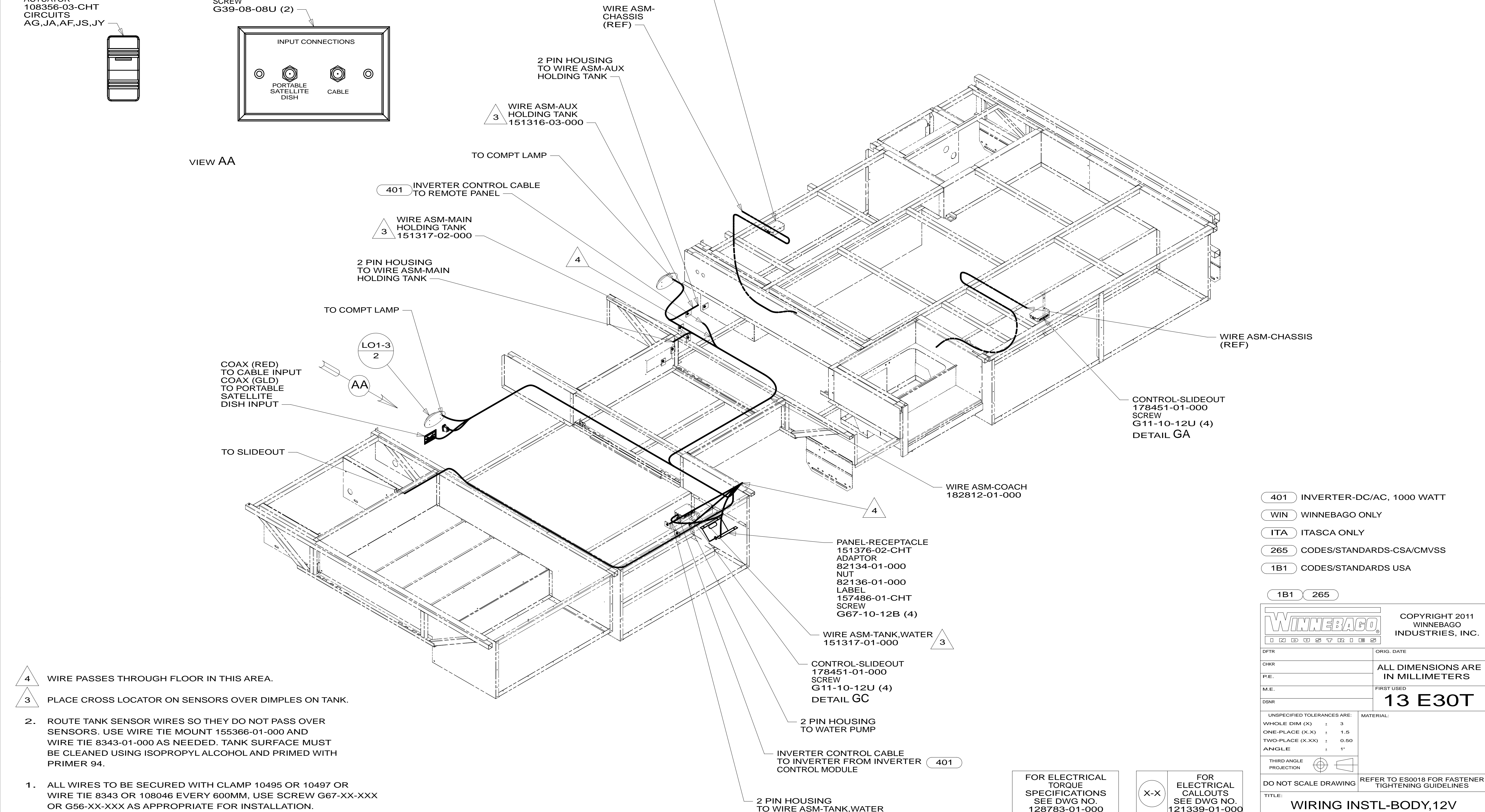
If you lack the skills, tools or equipment to perform diagnostic or repair work leave such work to an authorized Winnebago Industries dealer or other qualified shop.

DRAWING NO.	FEATURE
182809-01	WIN
182809-02	ITA

RELEASE	REV/DATE	DWG NO	182809
REV ZONE	REVISION RECORD	DATE	DTR-ORIG



VIEW AA



- 4 WIRE PASSES THROUGH FLOOR IN THIS AREA.
- 3 PLACE CROSS LOCATOR ON SENSORS OVER DIMPLES ON TANK.
- ROUTE TANK SENSOR WIRES SO THEY DO NOT PASS OVER SENSORS. USE WIRE TIE MOUNT 155366-01-000 AND WIRE TIE 8343-01-000 AS NEEDED. TANK SURFACE MUST BE CLEANED USING ISOPROPYL ALCOHOL AND PRIMED WITH PRIMER 94.
  - ALL WIRES TO BE SECURED WITH CLAMP 10495 OR 10497 OR WIRE TIE 8343 OR 108046 EVERY 600MM, USE SCREW G67-XX-XXX OR G56-XX-XXX AS APPROPRIATE FOR INSTALLATION.

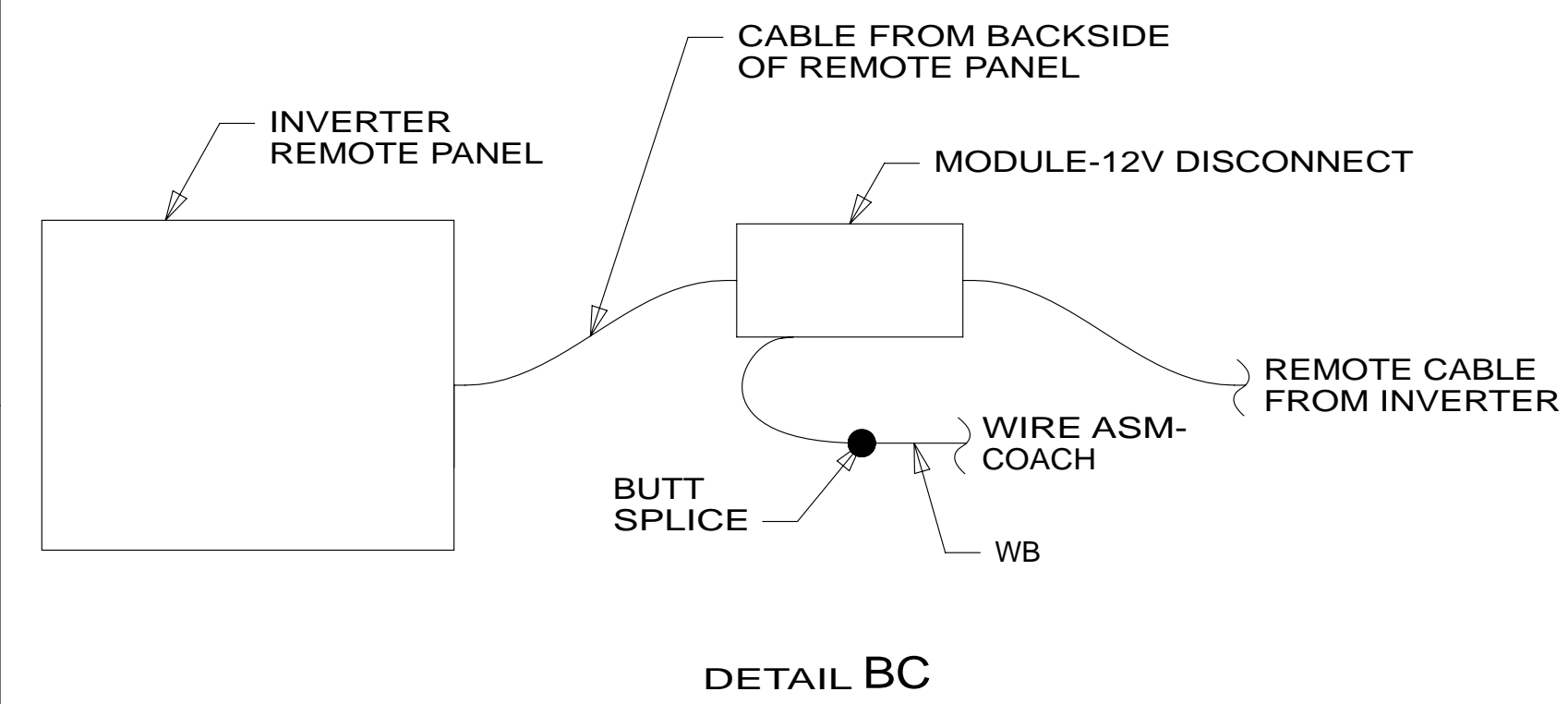
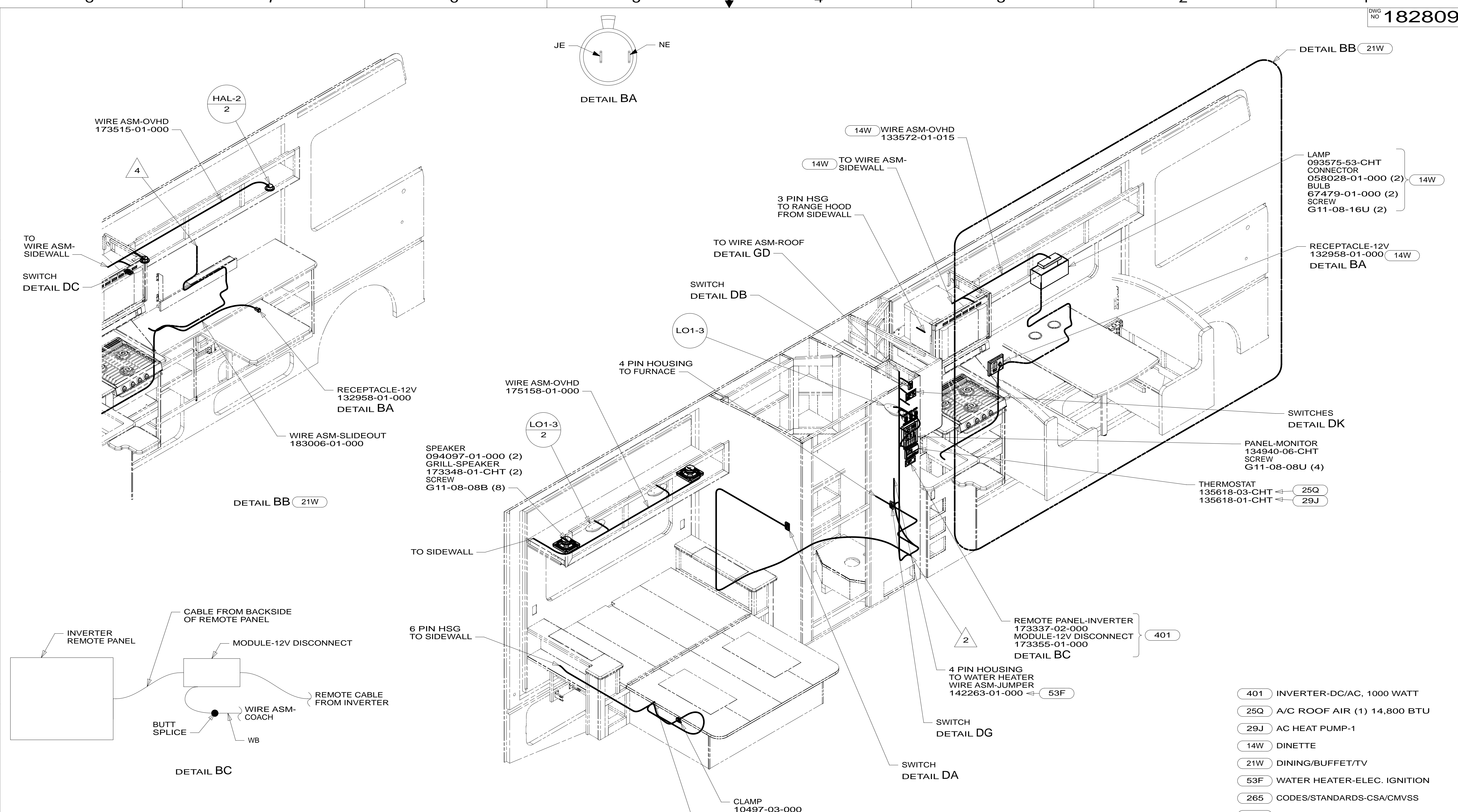
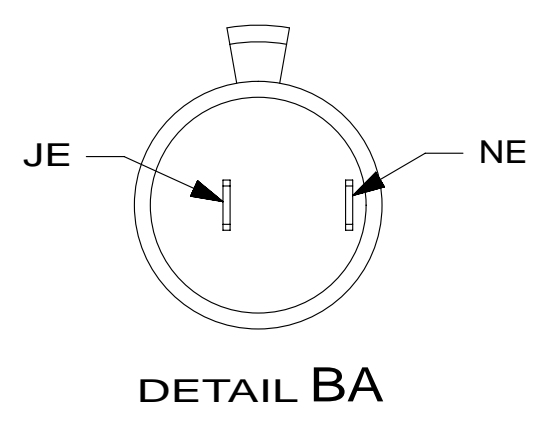
- 401 INVERTER-DC/AC, 1000 WATT
- WIN WINNEBAGO ONLY
- ITA ITASCA ONLY
- 265 CODES/STANDARDS-CSA/CMVSS
- 1B1 CODES/STANDARDS USA

**WINNEBAGO** COPYRIGHT 2011 WINNEBAGO INDUSTRIES, INC.

DTR	ORIG. DATE
CHKR	ALL DIMENSIONS ARE IN MILLIMETERS
P.E.	FIRST USED
M.E.	<b>13 E30T</b>
DSNR	MATERIAL:
UNSPECIFIED TOLERANCES ARE:	
WHOLE DIM (X)	: 3
ONE-PLACE (X.X)	: 1.5
TWO-PLACE (X.XX)	: 0.50
ANGLE	: 1°
THIRD ANGLE PROJECTION	
DO NOT SCALE DRAWING	REFER TO ES0018 FOR FASTENER TIGHTENING GUIDELINES
TITLE: <b>WIRING INSTL-BODY,12V</b>	
SHEET 1 OF 8	PART NO <b>182809</b> REV
REF:	1 28-Jun-2012

FOR ELECTRICAL TORQUE SPECIFICATIONS SEE DWG NO. 128783-01-000

FOR ELECTRICAL CALLOUTS SEE DWG NO. 121339-01-000



- 401 INVERTER-DC/AC, 1000 WATT
- 25Q A/C ROOF AIR (1) 14,800 BTU
- 29J AC HEAT PUMP-1
- 14W DINETTE
- 21W DINING/BUFFET/TV
- 53F WATER HEATER-ELEC. IGNITION
- 265 CODES/STANDARDS-CSA/CMVSS
- 1B1 CODES/STANDARDS USA

- 3 SEE WIRING INSTL-TV/DVD FOR ADDITIONAL INFORMATION.
- 2 WIRE ROUTED WITH 110V WIRING. SEE WIRING INSTL-BODY,110V FOR ROUTING INFORMATION.

1. ALL WIRES TO BE SECURED WITH CLAMP 10495 OR 10497 OR WIRE TIE 8343 OR 108046 EVERY 600MM, USE SCREW G67-XX-XXX OR G56-XX-XXX AS APPROPRIATE FOR INSTALLATION.

NOTES:

FOR ELECTRICAL TORQUE SPECIFICATIONS SEE DWG NO. 128783-01-000

FOR ELECTRICAL CALLOUTS SEE DWG NO. 121339-01-000

FIRST USED

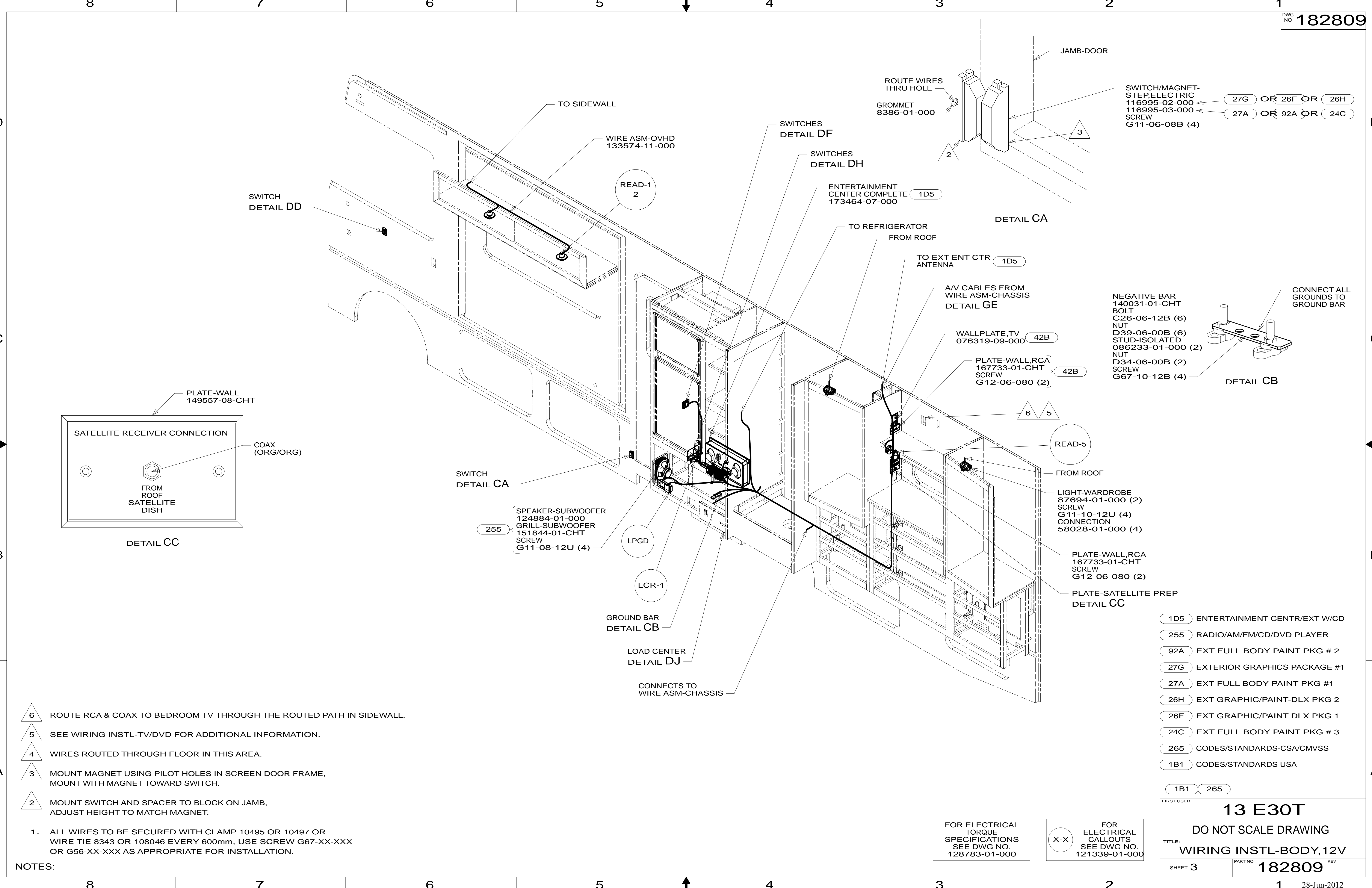
**13 E30T**

DO NOT SCALE DRAWING

TITLE: **WIRING INSTL-BODY,12V**

SHEET 2 PART NO **182809** REV

28-Jun-2012



- 6 ROUTE RCA & COAX TO BEDROOM TV THROUGH THE ROUTED PATH IN SIDEWALL.
- 5 SEE WIRING INSTL-TV/DVD FOR ADDITIONAL INFORMATION.
- 4 WIRES ROUTED THROUGH FLOOR IN THIS AREA.
- 3 MOUNT MAGNET USING PILOT HOLES IN SCREEN DOOR FRAME, MOUNT WITH MAGNET TOWARD SWITCH.
- 2 MOUNT SWITCH AND SPACER TO BLOCK ON JAMB, ADJUST HEIGHT TO MATCH MAGNET.

1. ALL WIRES TO BE SECURED WITH CLAMP 10495 OR 10497 OR WIRE TIE 8343 OR 108046 EVERY 600mm, USE SCREW G67-XX-XXX OR G56-XX-XXX AS APPROPRIATE FOR INSTALLATION.

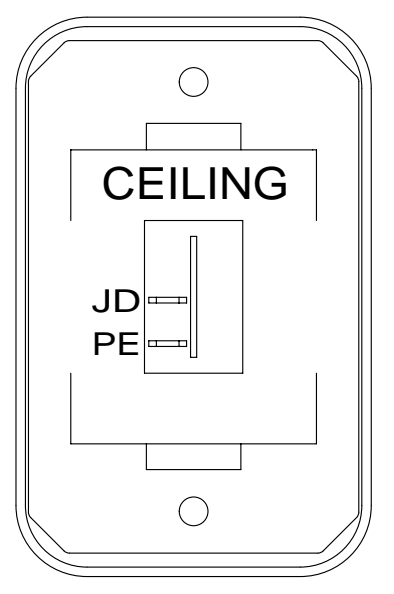
NOTES:

- 1D5 ENTERTAINMENT CENTR/EXT W/CD
- 255 RADIO/AM/FM/CD/DVD PLAYER
- 92A EXT FULL BODY PAINT PKG # 2
- 27G EXTERIOR GRAPHICS PACKAGE #1
- 27A EXT FULL BODY PAINT PKG #1
- 26H EXT GRAPHIC/PAINT-DLX PKG 2
- 26F EXT GRAPHIC/PAINT DLX PKG 1
- 24C EXT FULL BODY PAINT PKG # 3
- 265 CODES/STANDARDS-CSA/CMVSS
- 1B1 CODES/STANDARDS USA

FIRST USED	
<b>13 E30T</b>	
DO NOT SCALE DRAWING	
TITLE: <b>WIRING INSTL-BODY,12V</b>	
SHEET 3	PART NO <b>182809</b> REV
28-Jun-2012	

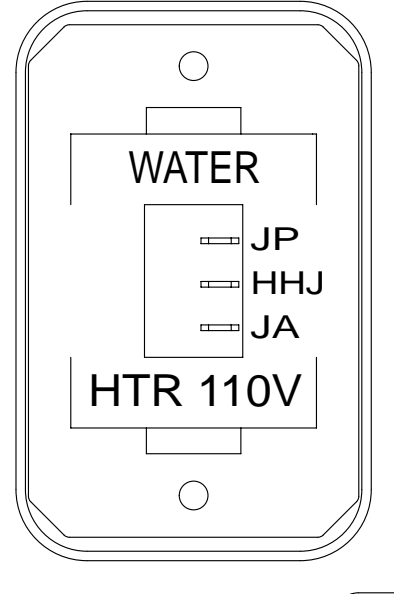
FOR ELECTRICAL TORQUE SPECIFICATIONS SEE DWG NO. 128783-01-000

FOR ELECTRICAL CALLOUTS SEE DWG NO. 121339-01-000



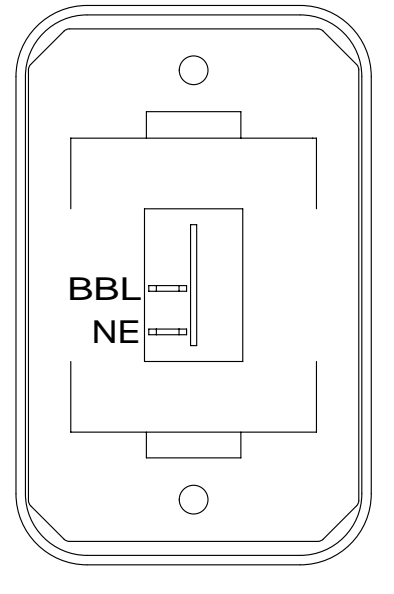
SWITCH-ROCKER  
135740-01-CHT  
SWITCH-BASE  
135741-01-CHT  
SWITCH-BEZEL  
135742-07-CHT  
SCREW  
G11-08-08U (2)

DETAIL DA



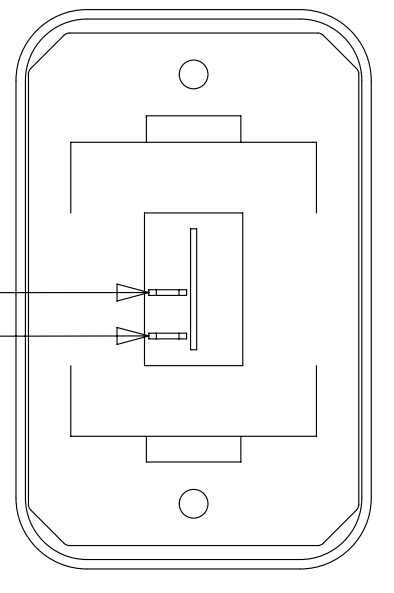
SWITCH-ROCKER  
135740-06-CHT  
SWITCH-BASE  
135741-01-CHT  
SWITCH-BEZEL  
135742-35-CHT  
SCREW  
G11-08-08U (2)

DETAIL DB 53D



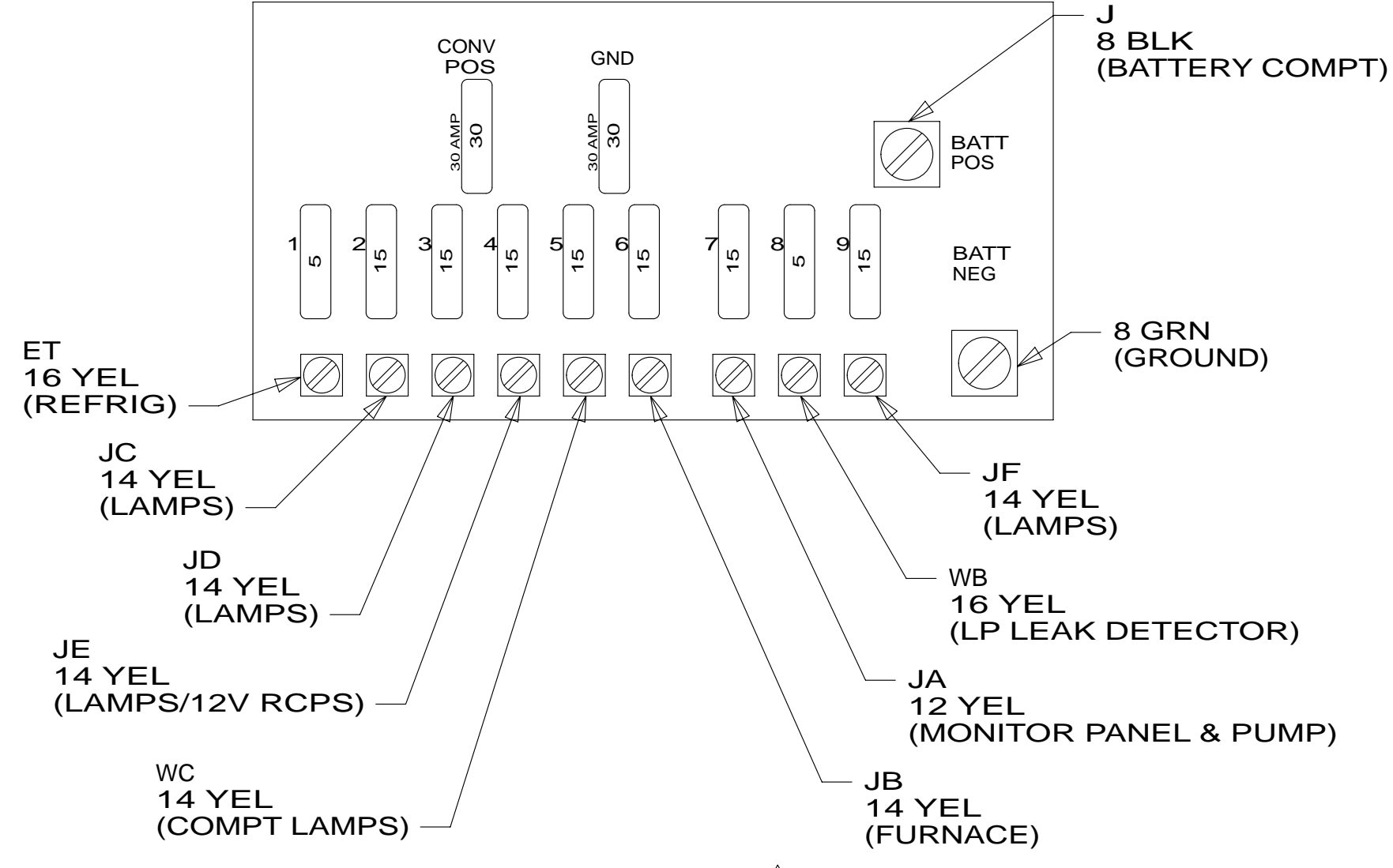
SWITCH-ROCKER  
135740-01-CHT  
SWITCH-BASE  
135741-01-CHT  
SWITCH-BEZEL  
135742-01-CHT  
SCREW  
G11-08-08U (2)

DETAIL DC 21W

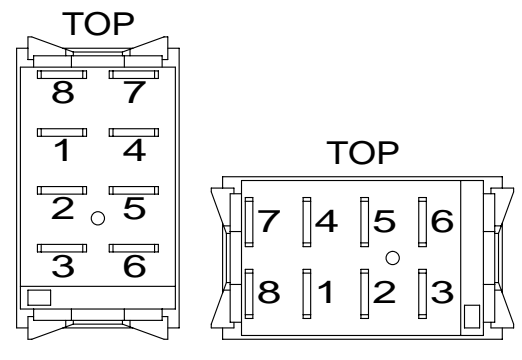


SWITCH-ROCKER  
135740-01-CHT  
SWITCH-BASE  
135741-01-CHT  
SWITCH-BEZEL  
135742-01-CHT  
SCREW  
G11-08-08U (2)

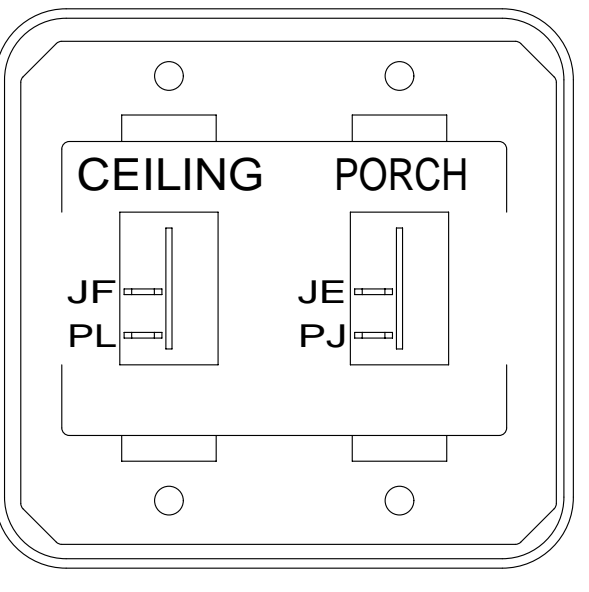
DETAIL DD



DETAIL DJ 1

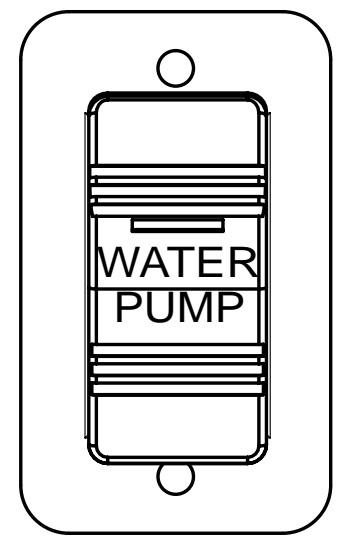


DETAIL DE



SWITCH-ROCKER  
135740-01-CHT (2)  
SWITCH-BASE  
135741-02-CHT  
SWITCH-BEZEL  
135742-19-CHT  
SCREW  
G11-08-08U (4)

DETAIL DF



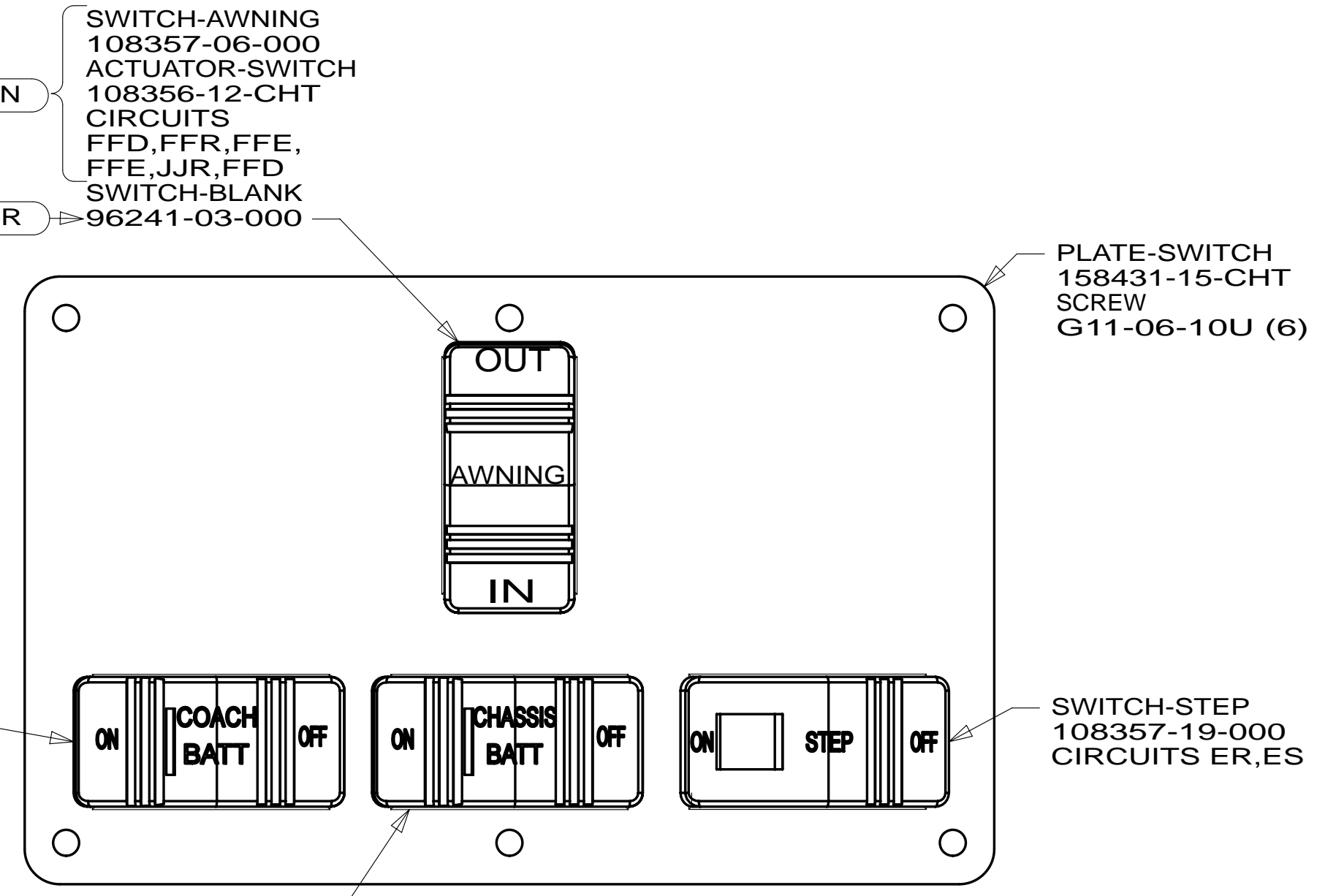
SWITCH-PUMP  
108357-15-000  
ACTUATOR  
108356-23-CHT  
PLATE  
98351-07-CHT  
SCREW  
G11-06-10U (2)

DETAIL DG

SWITCH-COACH BATTERY  
108357-18-000  
ACTUATOR-SWITCH  
108356-19-CHT  
CIRCUITS KF,LG,LJ,  
LJ,LH,KF,KF,LK

SWITCH-CHASSIS BATTERY  
108357-18-000  
ACTUATOR-SWITCH  
108356-20-CHT  
CIRCUITS UUC,TTY,UUB,  
UUB,TTZ,UUC,UUC,UUA

DETAIL DH 2



DETAIL DK

LABEL-SLIDEOUT,DRIVER,REAR  
163992-02-CHT

DRIVER'S  
SIDE REAR

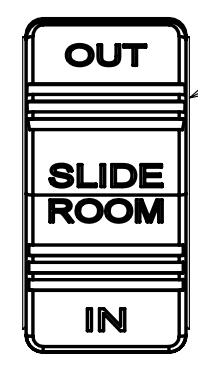
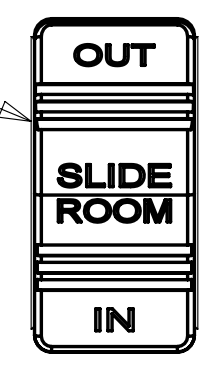
DRIVER'S  
SIDE FRONT

PASSENGER'S  
SIDE FRONT

LABEL-SLIDEOUT,DRIVER,FRONT  
163992-01-CHT

LABEL-SLIDEOUT,PASSENGER,FRONT  
163992-04-CHT

SWITCH  
108357-06-000  
ACTUATOR  
108356-24-CHT  
(CIRCUITS BBM,BBN)



SWITCH  
108357-06-000  
ACTUATOR  
108356-24-CHT  
(CIRCUITS HHA,HHF)

SWITCH  
108357-06-000  
ACTUATOR  
108356-24-CHT  
(CIRCUITS DR,DU)

**WARNING** CRUSH HAZARD. Keep people and objects clear of the inside and the outside of the slideout room when operating. Failure to comply could result in death or serious injury.

LABEL-WARNING, SLIDEOUT  
116549-01-000

NOTES:  
2 FOR SWITCH ORIENTATION SEE DETAIL DE  
1 FOR REFERENCE ONLY. SEE LOAD CENTER ASM FOR ADDITIONAL INFORMATION.

FOR ELECTRICAL TORQUE SPECIFICATIONS SEE DWG NO. 128783-01-000

FOR ELECTRICAL CALLOUTS SEE DWG NO. 121339-01-000

- 21W DINING/BUFFET/TV
- 53D WTR HTR-6GAL/ELE/LP/MOTORAID
- 265 CODES/STANDARDS-CSA/CMVSS
- 1B1 CODES/STANDARDS USA

FIRST USED	
<b>13 E30T</b>	
<b>DO NOT SCALE DRAWING</b>	
<b>TITLE: WIRING INSTL-BODY,12V</b>	
SHEET 4	PART NO 182809 REV
28-Jun-2012	

8 7 6 5 4 3 2 1

D

D

C

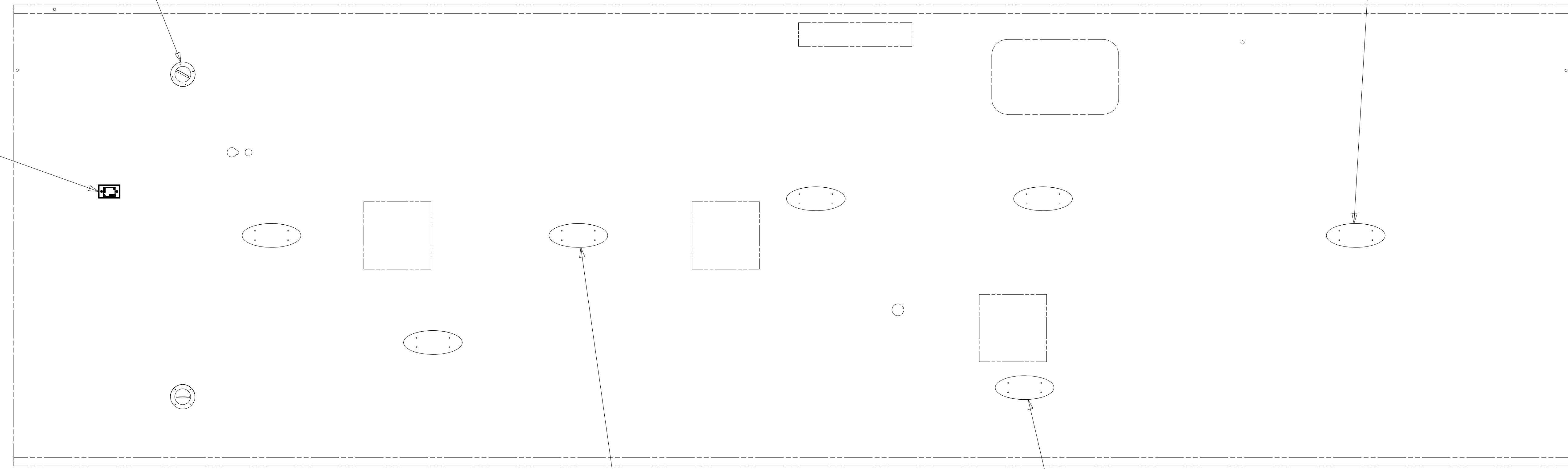
C

B

B

A

A



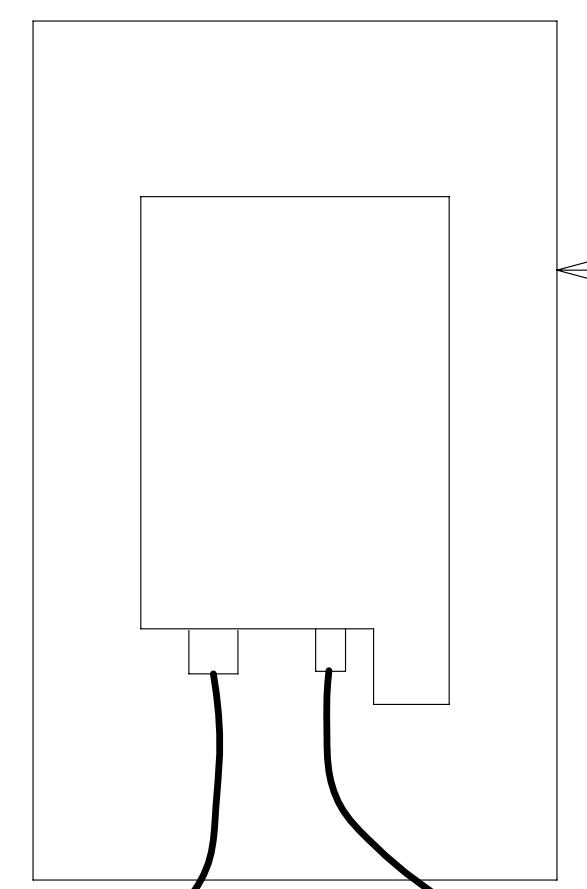
255 SPEAKER-ROUND,CEILING  
160867-01-CHT (2)  
SCREW  
G1208-12-170 (8)

SATELLITE  
ELEVATION  
SENSOR  
DETAIL EA

LO2-3  
5

LOSN3

LOSN3



3 PIN HOUSING  
FROM WIRE ASM-  
ELEVATION SENSOR

2 PIN HOUSING  
FROM WIRE ASM-ROOF

DETAIL EA

1 SENSOR SUPPLIED WITH SATELLITE ASSEMBLY.

NOTES:

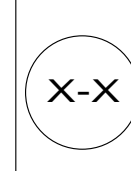
- 255 RADIO/AM/FM/CD/DVD PLAYER
- 265 CODES/STANDARDS-CSA/CMVSS
- 1B1 CODES/STANDARDS USA

1B1 265

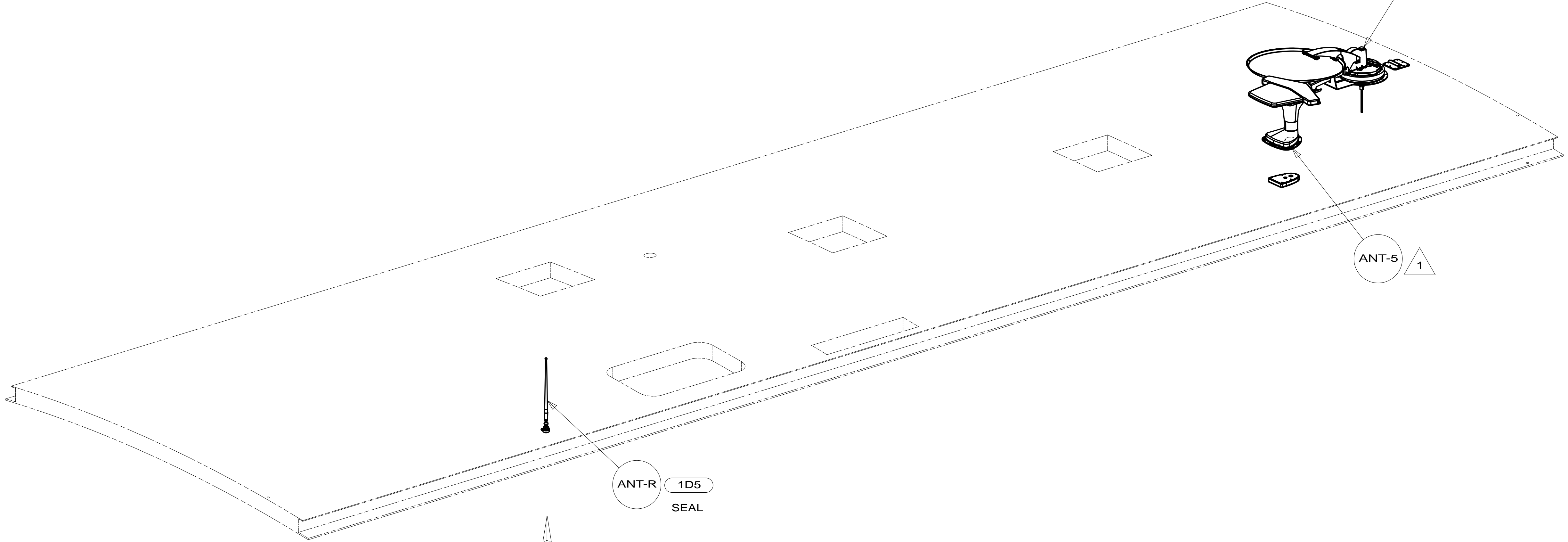
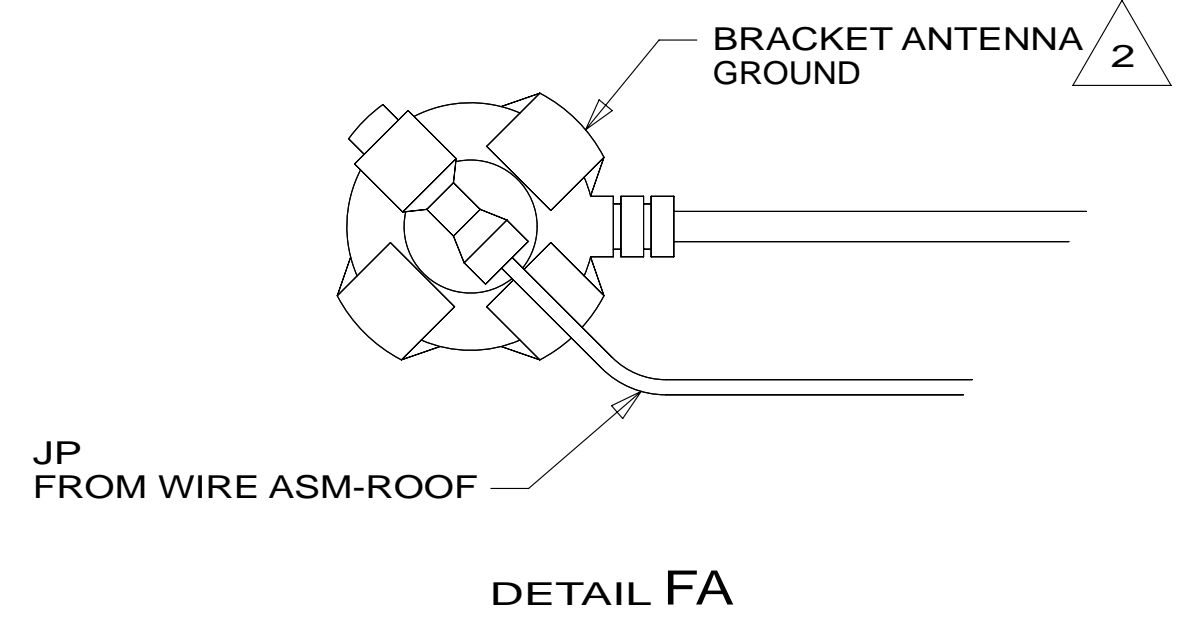
FIRST USED		<b>13 E30T</b>	
<b>DO NOT SCALE DRAWING</b>			
TITLE: <b>WIRING INSTL-BODY,12V</b>			
SHEET 5	PART NO	<b>182809</b>	REV

FOR ELECTRICAL  
TORQUE  
SPECIFICATIONS  
SEE DWG NO.  
128783-01-000

FOR  
ELECTRICAL  
CALLOUTS  
SEE DWG NO.  
121339-01-000



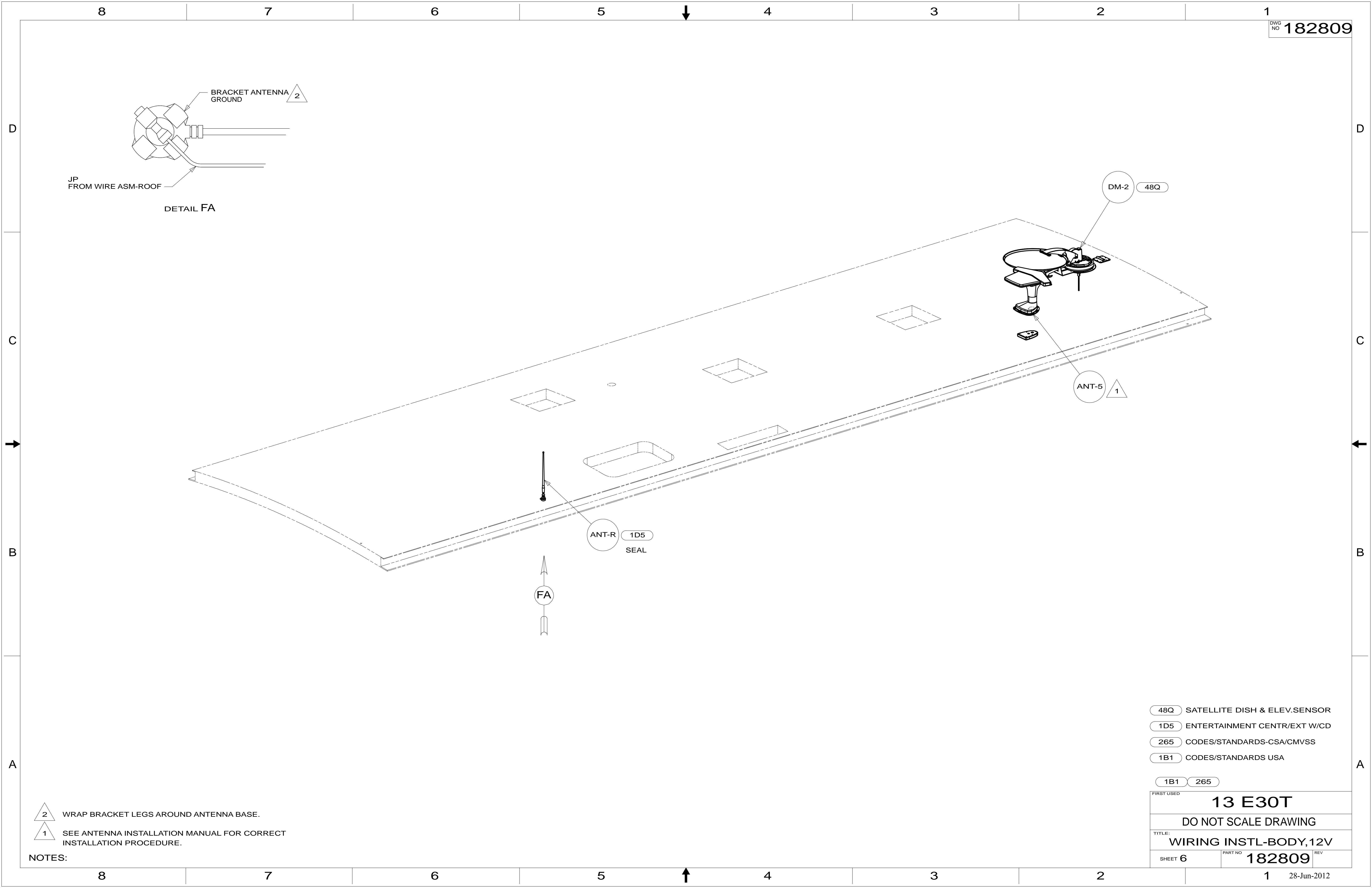
8 7 6 5 4 3 2 1

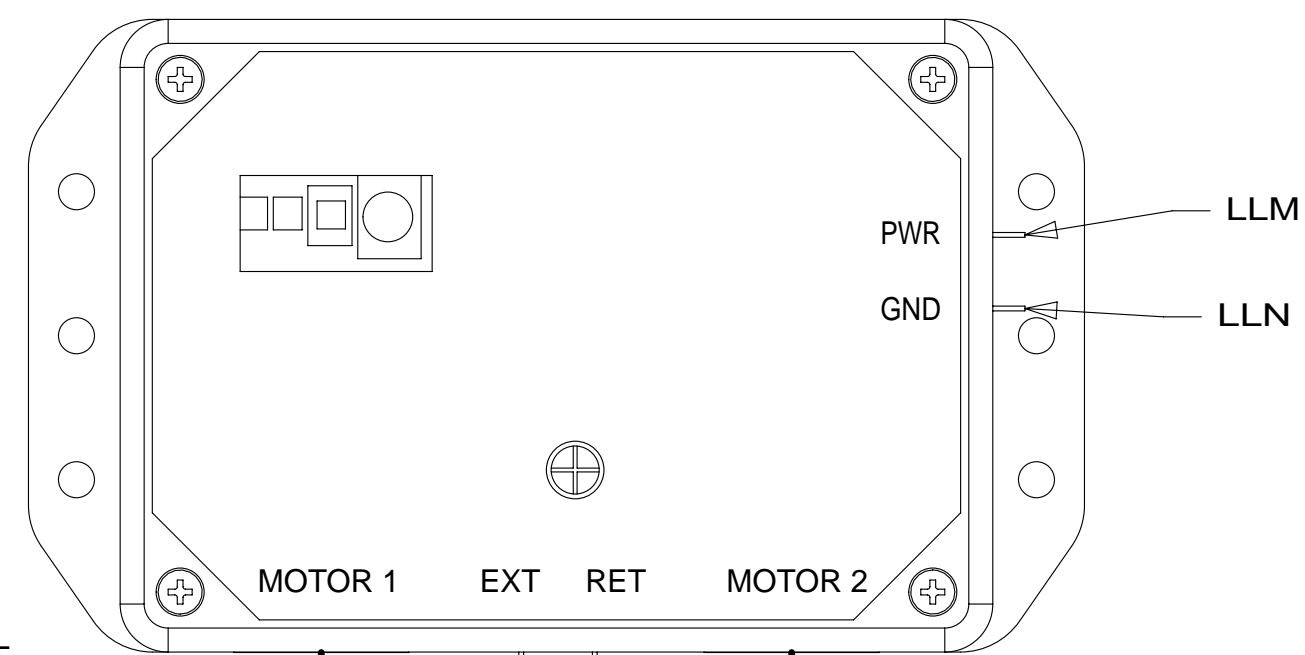


- 48Q SATELLITE DISH & ELEV.SENSOR
- 1D5 ENTERTAINMENT CENTR/EXT W/CD
- 265 CODES/STANDARDS-CSA/CMVSS
- 1B1 CODES/STANDARDS USA

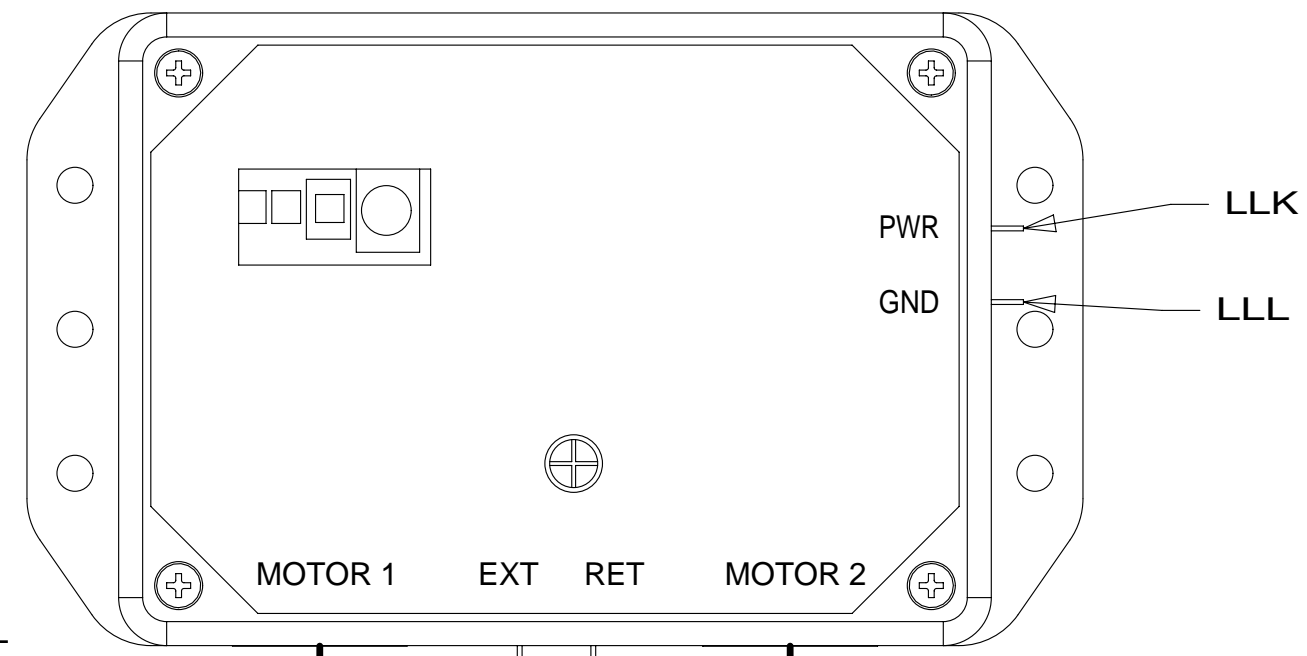
FIRST USED	
<b>13 E30T</b>	
DO NOT SCALE DRAWING	
TITLE: <b>WIRING INSTL-BODY,12V</b>	
SHEET 6	PART NO <b>182809</b> REV

- NOTES:
- 2 WRAP BRACKET LEGS AROUND ANTENNA BASE.
  - 1 SEE ANTENNA INSTALLATION MANUAL FOR CORRECT INSTALLATION PROCEDURE.

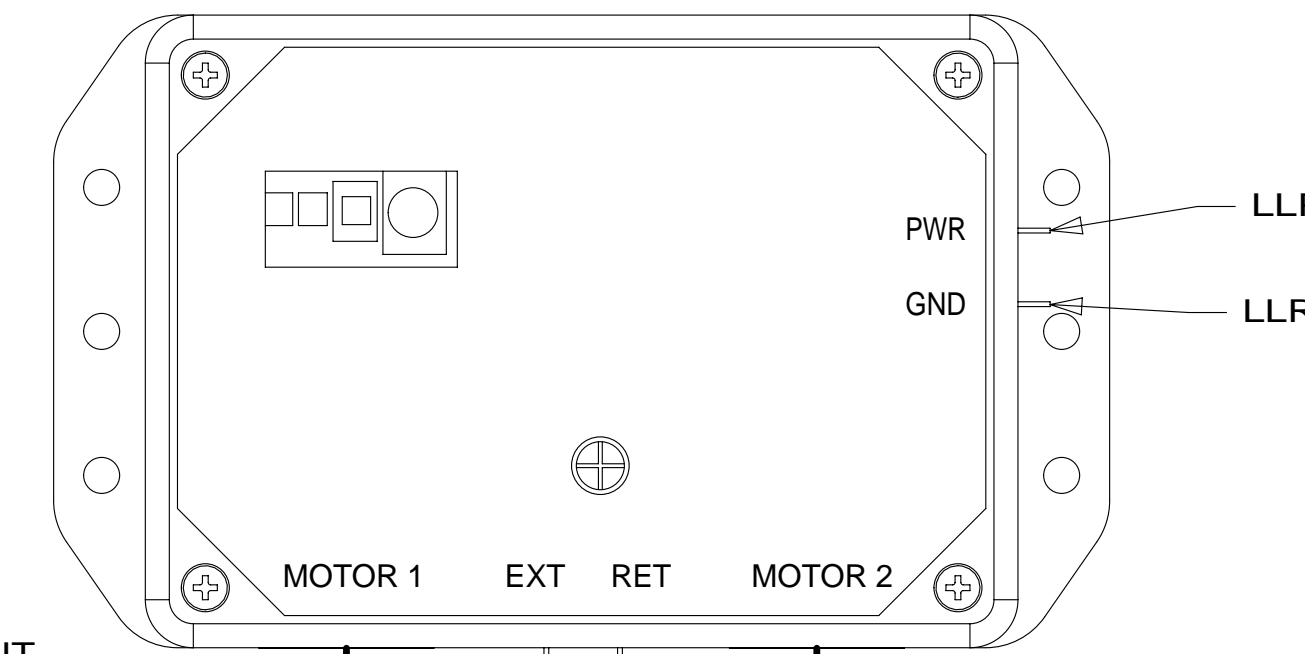




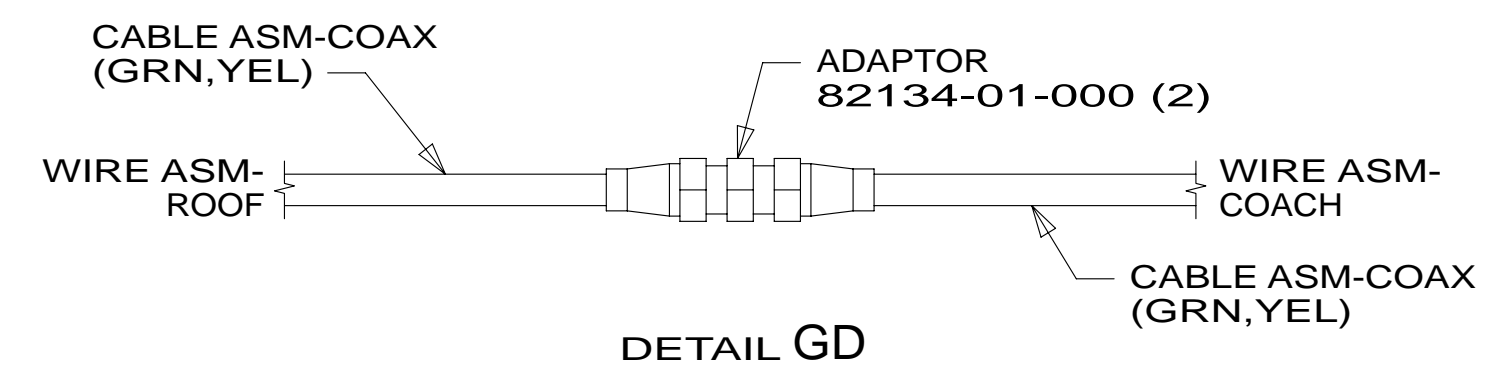
DETAIL GA



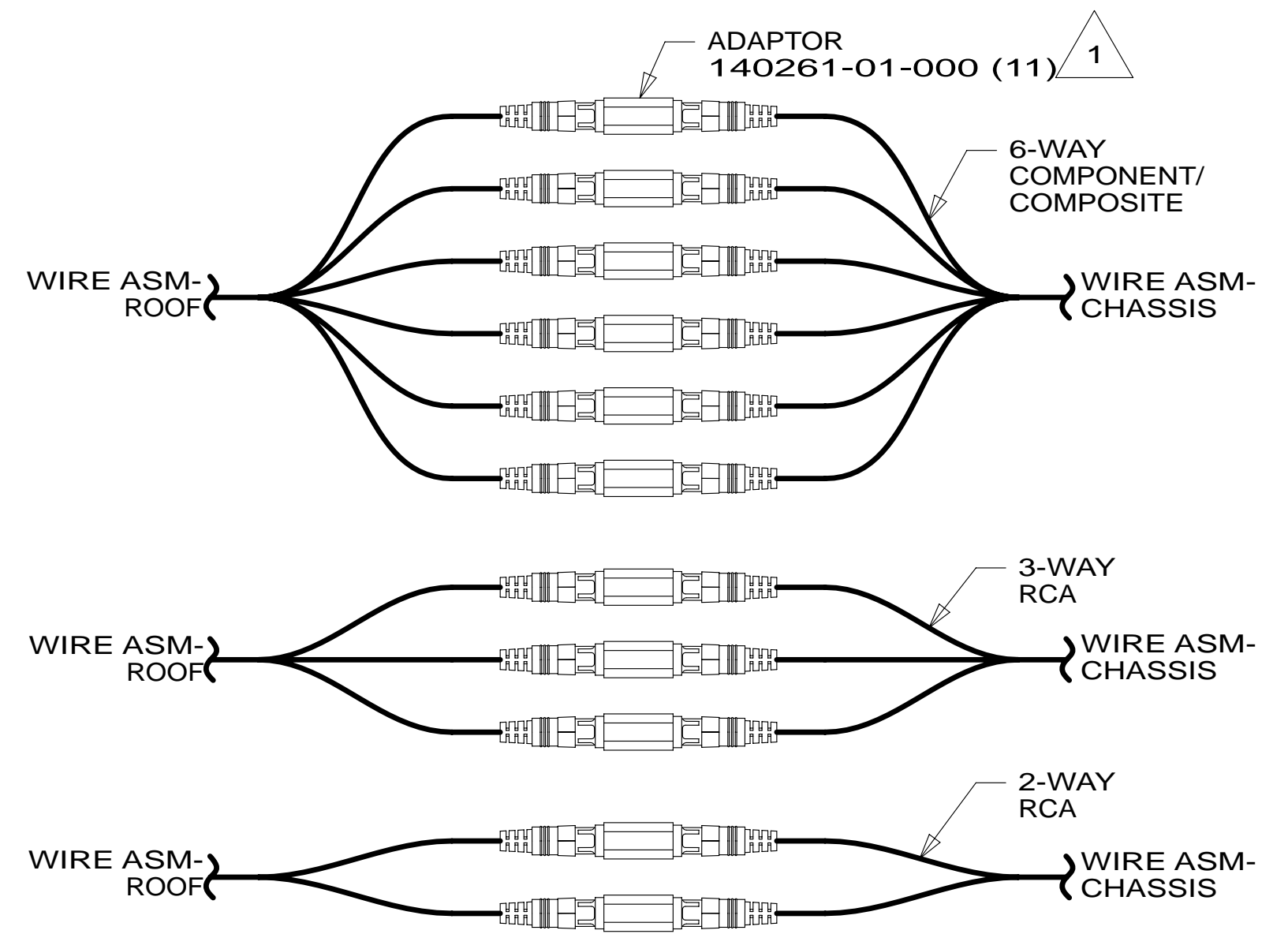
DETAIL GB



DETAIL GC



DETAIL GD



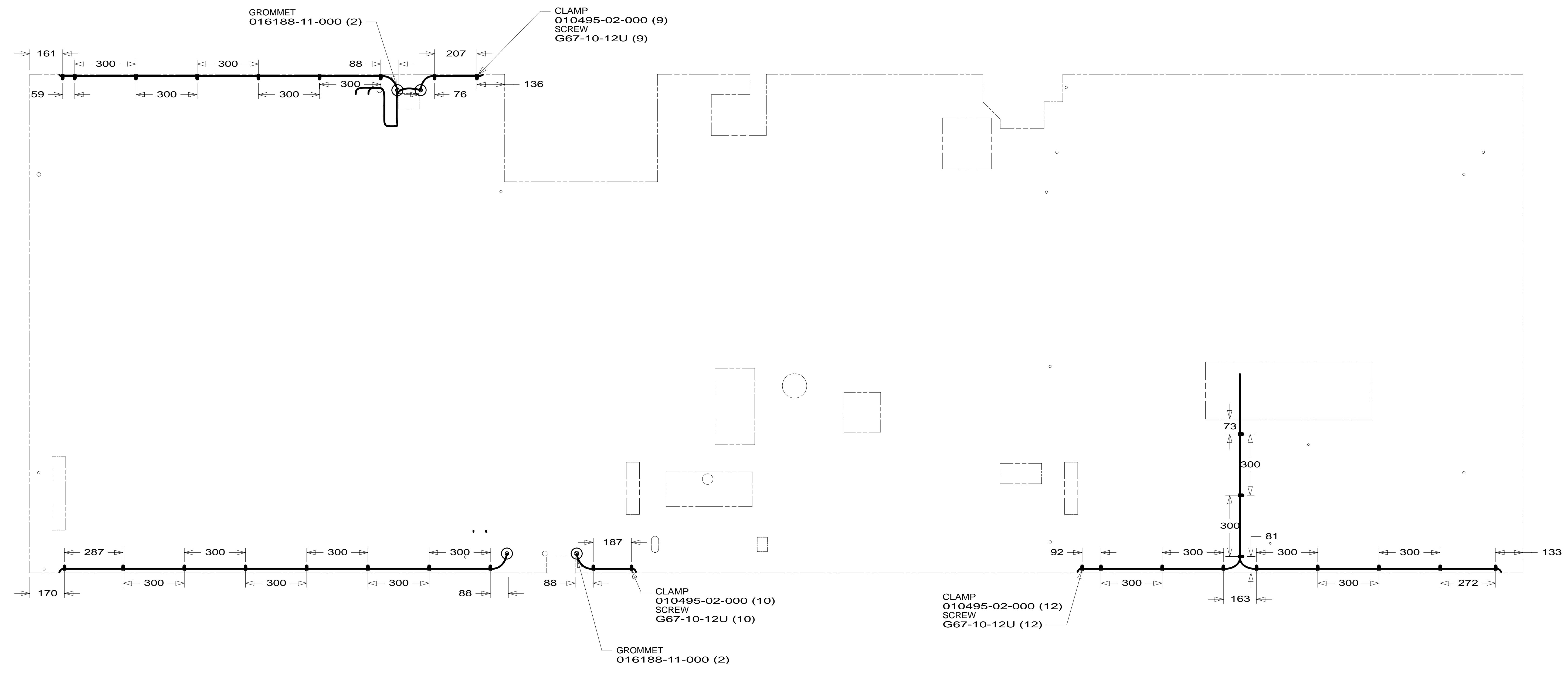
DETAIL GE

- NOTES:
- 5 WITH SLIDEOUT ROOM IN, ALLOW 400 MM OF WIRE BETWEEN U-CHANNEL, WIRE TRAY AND SUPPORT ASM-WIRE FOR PROPER OPERATION.
  - 4 CONVOLUTE TUBING STOPS HERE AND BRAIDED SLEEVING STARTS
  - 3 WIRES PART OF WIRE ASM-CHASSIS
  - 2. USE WIRE TIE 8343-02-000 AND SECURE WIRE HARNESS TO WIRE TRAYS.
  - 1 WRAP BOTH ENDS OF ADAPTOR WITH TAPE 8363-01-000 TO SECURE CONNECTION.

- 1D5 ENTERTAINMENT CENTR/EXT W/CD
- 265 CODES/STANDARDS-CSA/CMVSS
- 1B1 CODES/STANDARDS USA

FIRST USED		<b>13 E30T</b>	
<b>DO NOT SCALE DRAWING</b>			
<b>TITLE: WIRING INSTL-BODY, 12V</b>			
SHEET 7	PART NO	<b>182809</b>	REV
			28-Jun-2012





265 CODES/STANDARDS-CSA/CMVSS  
 1B1 CODES/STANDARDS USA

1B1 265

FIRST USED	<b>13 E30T</b>	
DO NOT SCALE DRAWING		
TITLE: <b>WIRING INSTL-BODY,12V</b>		
SHEET 8	PART NO <b>182809</b>	REV

FOR ELECTRICAL TORQUE SPECIFICATIONS SEE DWG NO. 128783-01-000

X-X FOR ELECTRICAL CALLOUTS SEE DWG NO. 121339-01-000