



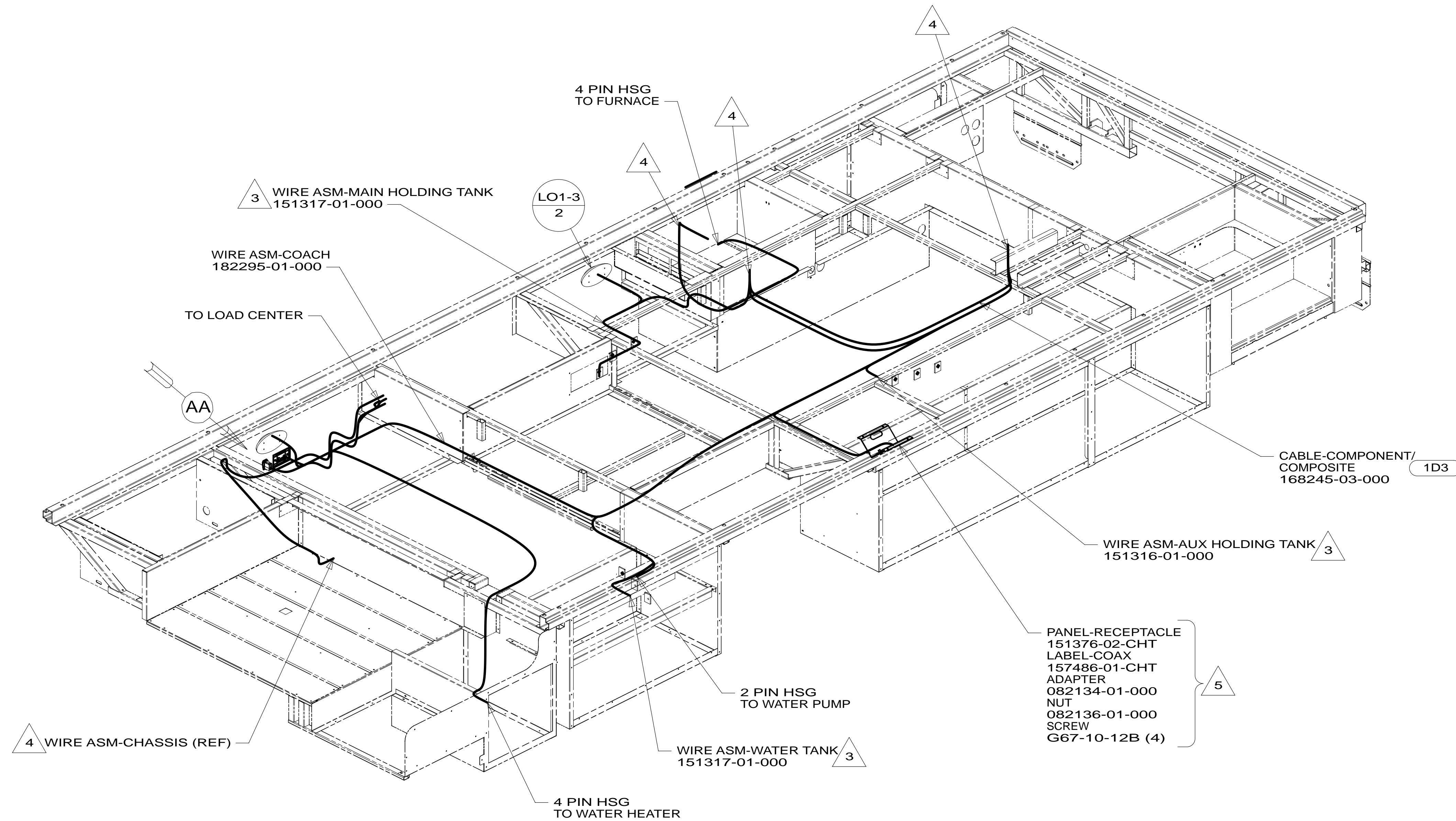
DANGER

Danger of electrical shock, burns or death. Always remove all power sources before attempting any repair, service or diagnostic work. Power can be present from shore power, generator, inverter or battery. All power sources must be disabled and secured before performing any service.



CAUTION

If you lack the skills, tools or equipment to perform diagnostic or repair work leave such work to an authorized Winnebago Industries dealer or other qualified shop.



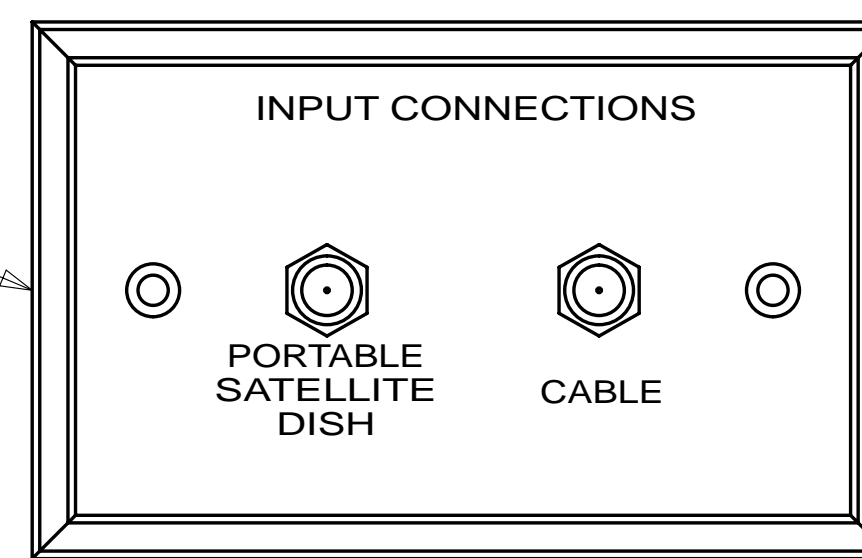
- 5 NOT USED WITH 1D3
- 4 WIRE PASSES THROUGH FLOOR IN THIS AREA.
- 3 PLACE CROSS LOCATOR ON SENSORS OVER DIMPLES ON TANK.

2. ROUTE TANK SENSOR WIRES SO THEY DO NOT PASS OVER SENSORS. USE WIRE TIE MOUNT 155366-01-000 AND WIRE TIE 8343-01-000 AS NEEDED. TANK SURFACE MUST BE CLEANED USING ISOPROPYL ALCOHOL AND PRIMED WITH PRIMER 94.

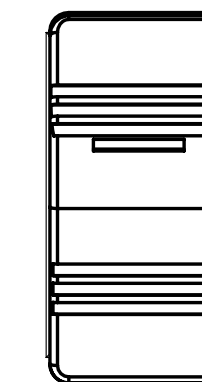
1. ALL WIRES TO BE SECURED WITH CLAMP 10495 OR 10497 OR WIRE TIE 8343 OR 108046 EVERY 600MM, USE SCREW G67-XX-XXX OR G56-XX-XXX AS APPROPRIATE FOR INSTALLATION.

NOTES:

PLATE-WALL, DUAL COAX 149557-03-CHT SCREW G39-08-08U (2)



VIEW AA



SWITCH-WATER PUMP 108357-15-CHT ACTUATOR 108356-03-CHT CIRCUITS AG,JA,AF,JS,JY

FOR ELECTRICAL TORQUE SPECIFICATIONS SEE DWG NO. 128783-01-000

FOR ELECTRICAL CALLOUTS SEE DWG NO. 121339-01-000

- 1D3 ENTERTAIN CENTR/EXT TV-DVD
- 401 INVERTER-DC/AC, 1000 WATT
- 265 CODES/STANDARDS-CSA/CMVSS
- 1B1 CODES/STANDARDS USA

1B1 265

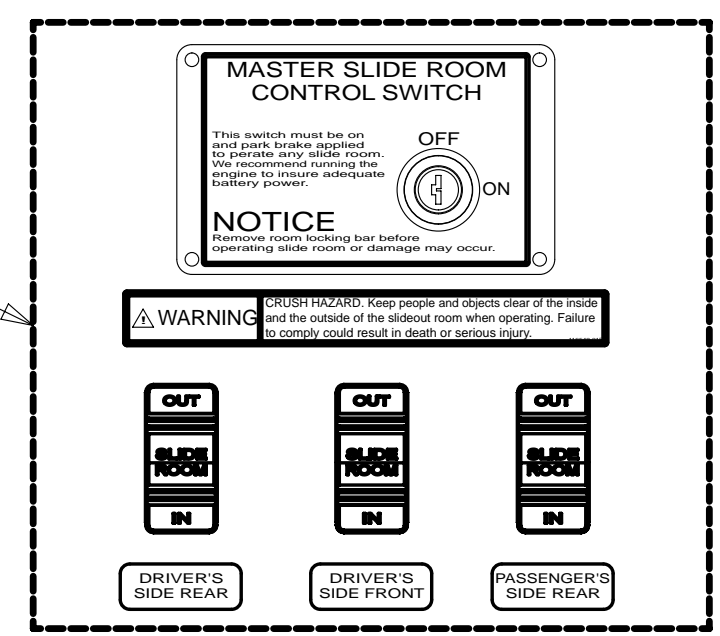
WINNEBAGO COPYRIGHT 2011 WINNEBAGO INDUSTRIES, INC.

DTR	ORIG. DATE
CHKR	ALL DIMENSIONS ARE IN MILLIMETERS
P.E.	
M.E.	FIRST USED
DSNR	13 E27N
UNSPECIFIED TOLERANCES ARE:	
WHOLE DIM (X)	: 3
ONE-PLACE (X.X)	: 1.5
TWO-PLACE (X.XX)	: 0.50
ANGLE	: 1°
THIRD ANGLE PROJECTION	

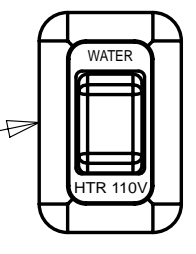
DO NOT SCALE DRAWING REFER TO ES0018 FOR FASTENER TIGHTENING GUIDELINES

TITLE: **WIRING INSTL-BODY,12V**

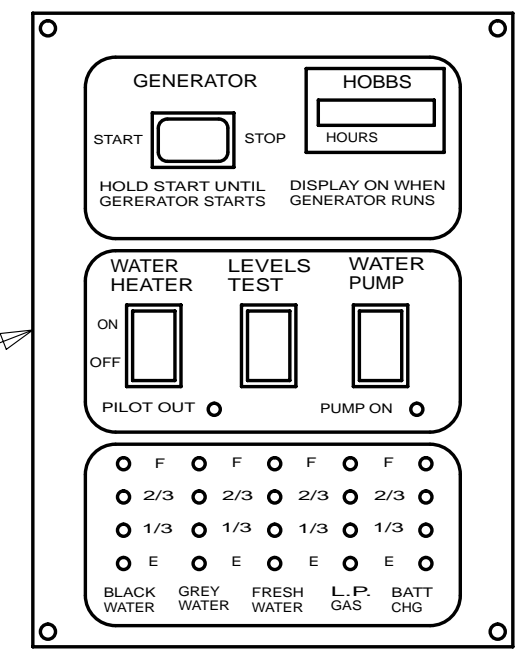
SHEET 1 OF 6 PART NO 182292 REV 1 13-Jun-2012



SWITCHES
DETAIL DG

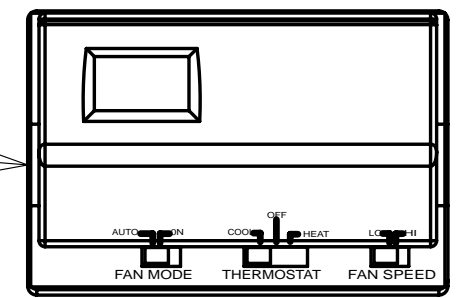


SWITCH
DETAIL DF

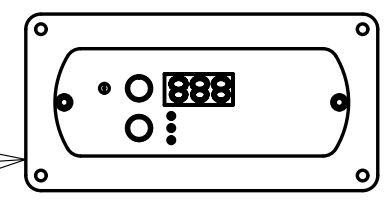


PANEL-MONITOR
134940-06-CHT
SCREW
G11-08-08U (4)

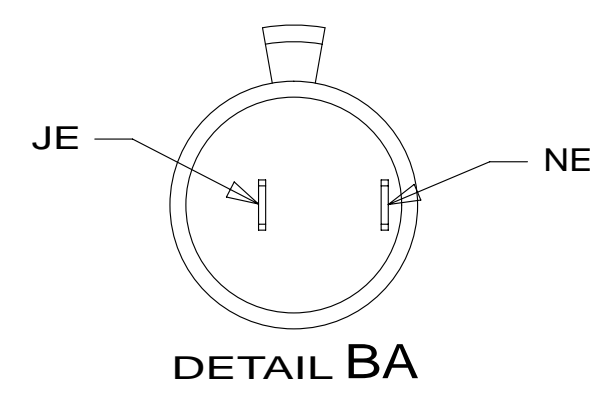
- 25Q 135618-03-CHT OR 135618-01-CHT SCREW G13-07-12U (2)



- 401 REMOTE PANEL-INVERTER 173337-02-000 MODULE-12V DISCONNECT 173355-01-000



DETAIL BB



DETAIL BA

- 22L OR 41Q 133574-01-000 WIRE ASM-OVHD OR 14W 133572-01-015

TO WIRE ASM-ROOF
DETAIL FA

TO REAR SLIDEOUT MOTOR

TO WIRE ASM-SLIDEOUT

MAIN TV CONNECTORS
FROM ROOF

- 3 68D TV-40" (REF)

RECEPTACLE-12V
132958-01-000
DETAIL BA

TO FRONT
SLIDEOUT MOTOR

TO REAR SLIDEOUT MOTOR

6-PIN HSG
TO WIRE ASM-ROOF

WIRE ASM-OVHD
182761-01-000

SPEAKER
94097-01-000 (2)
GRILLE
173348-01-CHT (2)
SCREW
G11-08-08U (8)

- LO1-3
2

HOUSINGS TO
SLIDEOUT MOTORS

TO FRONT SLIDEOUT MOTOR

- 41Q READ-1
2

- LAMP 93575-62-CHT BULB 67479-01-000 (2) CONNECTOR 58028-01-000 (2) SCREW G11-06-10U (2)

CLAMPS-SLIDEOUT WIRES
10495-02-000 (4)

TO IR RECEIVER
FROM ROOF

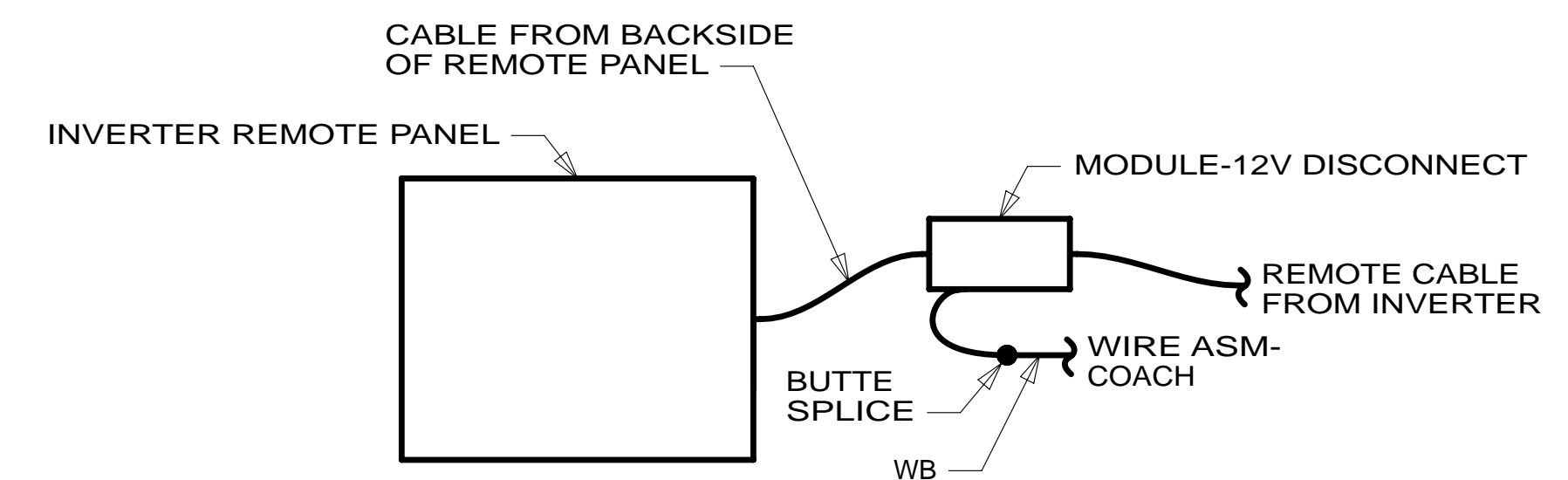
SWITCH
DETAIL DB

SPEAKER-SUBWOOFER
124884-01-000
GRILL-SUBWOOFER
151844-01-CHT
SCREW
G11-08-12U (4)

- 41Q SOFA/SLEEPER-ULTRALEATHER
- 22L DINETTE UPGRADE
- 14W DINETTE
- 68D TV-40" COLOR,STEREO W/REMOTE
- 255 RADIO/AM/FM/CD/DVD PLAYER
- 401 INVERTER-DC/AC, 1000 WATT
- 29J AC HEAT PUMP-1
- 25Q A/C ROOF AIR (1) 14,800 BTU
- 265 CODES/STANDARDS-CSA/CMVSS
- 1B1 CODES/STANDARDS USA

- 1B1 265

FIRST USED		13 E27N	
DO NOT SCALE DRAWING			
TITLE: WIRING INSTL-BODY,12V			
SHEET 2	PART NO	182292	REV



DETAIL BC

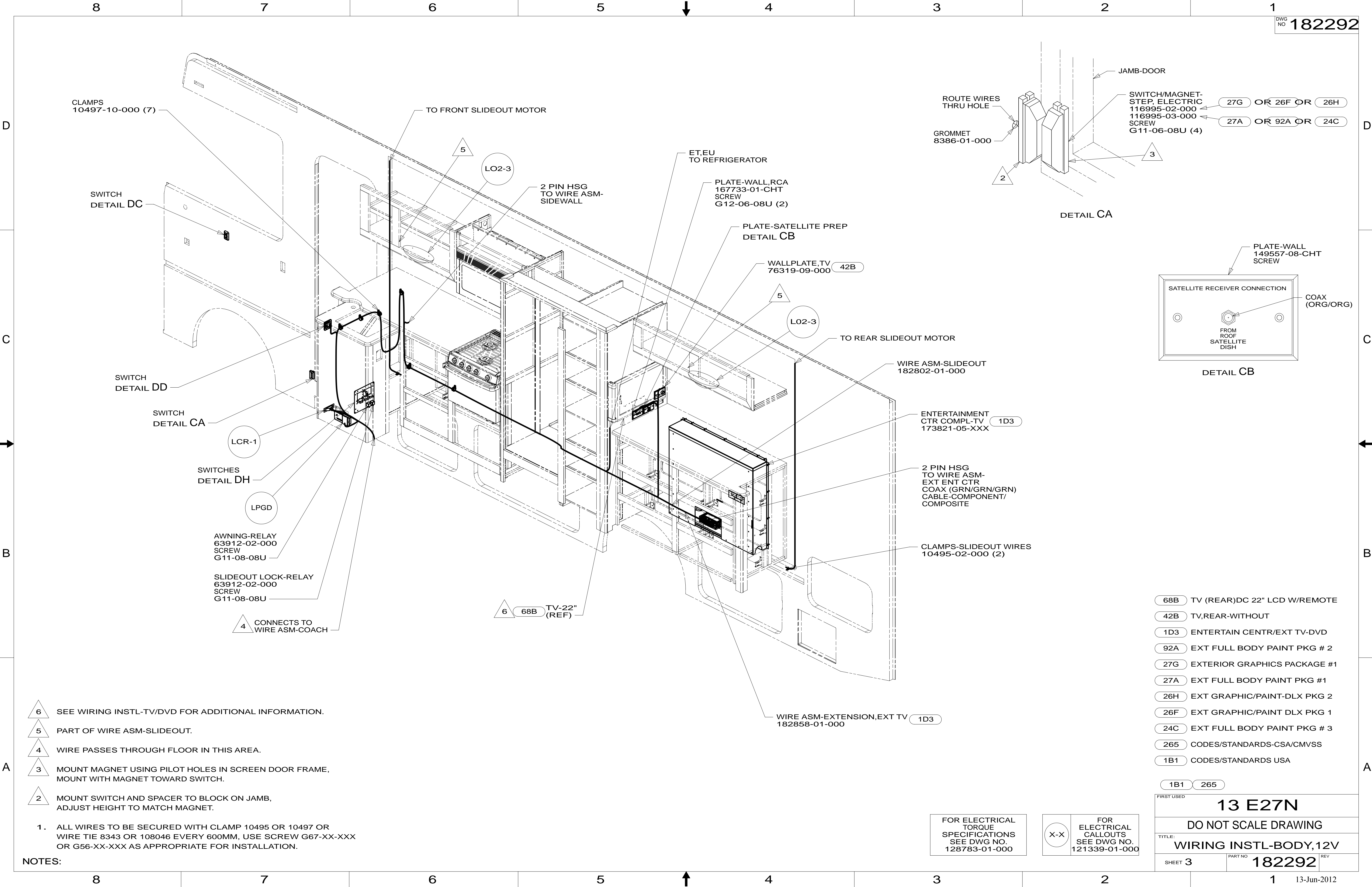
FOR ELECTRICAL TORQUE SPECIFICATIONS SEE DWG NO. 128783-01-000

FOR ELECTRICAL CALLOUTS SEE DWG NO. 121339-01-000

- 3 SEE WIRING INSTL-TV/DVD FOR ADDITIONAL INFORMATION.
- 2 WIRE PASSES THROUGH FLOOR IN THIS AREA.

1. ALL WIRES TO BE SECURED WITH CLAMP 10495 OR 10497 OR WIRE TIE 8343 OR 108046 EVERY 600MM, USE SCREW G67-XX-XXX OR G56-XX-XXX AS APPROPRIATE FOR INSTALLATION.

NOTES:



- 6 SEE WIRING INSTL-TV/DVD FOR ADDITIONAL INFORMATION.
- 5 PART OF WIRE ASM-SLIDEOUT.
- 4 WIRE PASSES THROUGH FLOOR IN THIS AREA.
- 3 MOUNT MAGNET USING PILOT HOLES IN SCREEN DOOR FRAME, MOUNT WITH MAGNET TOWARD SWITCH.
- 2 MOUNT SWITCH AND SPACER TO BLOCK ON JAMB, ADJUST HEIGHT TO MATCH MAGNET.

1. ALL WIRES TO BE SECURED WITH CLAMP 10495 OR 10497 OR WIRE TIE 8343 OR 108046 EVERY 600MM, USE SCREW G67-XX-XXX OR G56-XX-XXX AS APPROPRIATE FOR INSTALLATION.

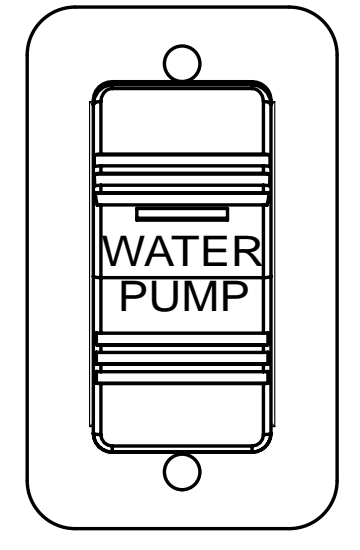
NOTES:

- 68B TV (REAR)DC 22" LCD W/REMOTE
- 42B TV,REAR-WITHOUT
- 1D3 ENTERTAIN CTR/EXT TV-DVD
- 92A EXT FULL BODY PAINT PKG # 2
- 27G EXTERIOR GRAPHICS PACKAGE #1
- 27A EXT FULL BODY PAINT PKG #1
- 26H EXT GRAPHIC/PAINT-DLX PKG 2
- 26F EXT GRAPHIC/PAINT DLX PKG 1
- 24C EXT FULL BODY PAINT PKG # 3
- 265 CODES/STANDARDS-CSA/CMVSS
- 1B1 CODES/STANDARDS USA

1B1	265
FIRST USED	
13 E27N	
DO NOT SCALE DRAWING	
TITLE: WIRING INSTL-BODY,12V	
SHEET 3	PART NO 182292 REV

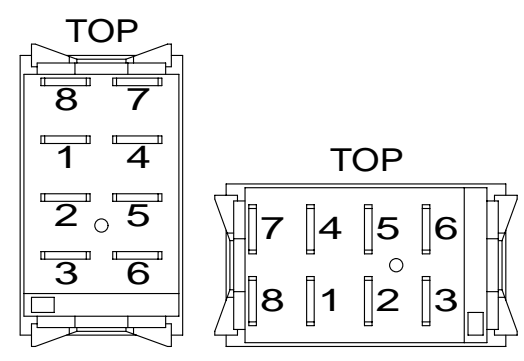
FOR ELECTRICAL TORQUE SPECIFICATIONS SEE DWG NO. 128783-01-000

FOR ELECTRICAL CALLOUTS SEE DWG NO. 121339-01-000

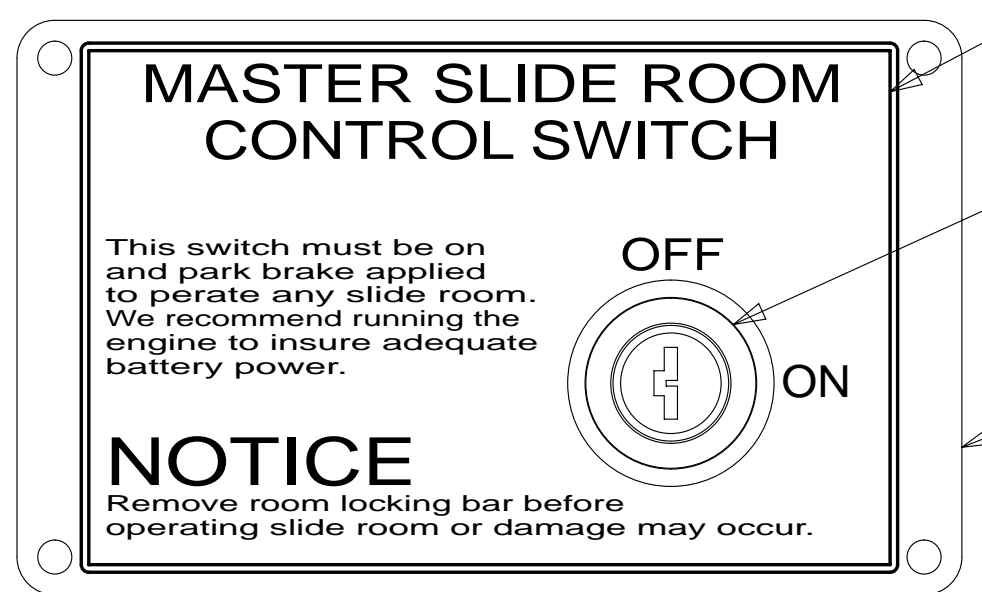


SWITCH-PUMP
108357-15-000
ACTUATOR
108356-23-CHT
PLATE
98351-07-CHT
SCREW
G11-06-10U (2)

DETAIL DA
(2 PLACES)



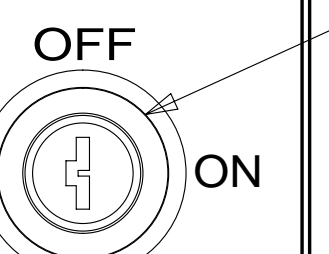
DETAIL DE



LABEL-SLIDROOM CONTROL,MAN 163988-01-CHT
SWITCH-KEY,SPST-ILLINOIS LCK 163097-01-000 (CONNECTS TO CIRCUITS DY & DDJ)
PLATE-KEY, SLIDE ROOM 163987-01-CHT SCREW 76790-05-000 (4)

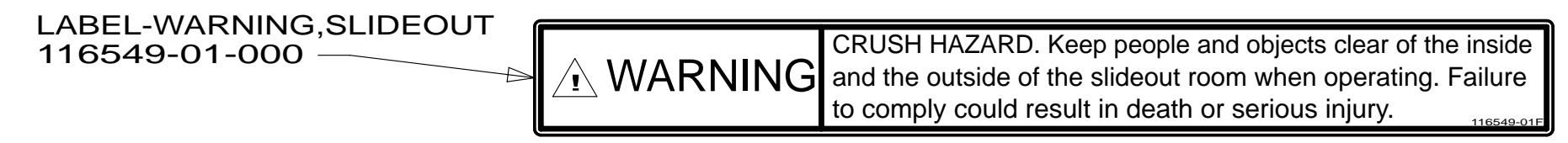
MASTER SLIDE ROOM CONTROL SWITCH

This switch must be on and park brake applied to operate any slide room. We recommend running the engine to insure adequate battery power.

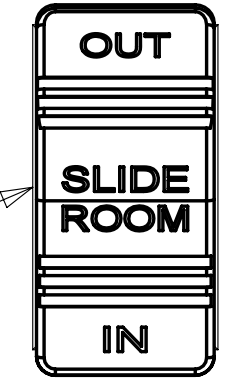


NOTICE

Remove room locking bar before operating slide room or damage may occur.



SWITCH 108357-06-000 ACTUATOR 108356-24-CHT CIRCUITS BBM,DT,BBN, BBA,DDJ,BBA



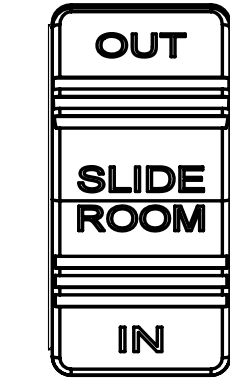
DRIVER'S SIDE REAR

LABEL-SLIDEOUT, DRIVER,REAR 163992-02-CHT



DRIVER'S SIDE FRONT

LABEL-SLIDEOUT, DRIVER,FRONT 163992-01-CHT



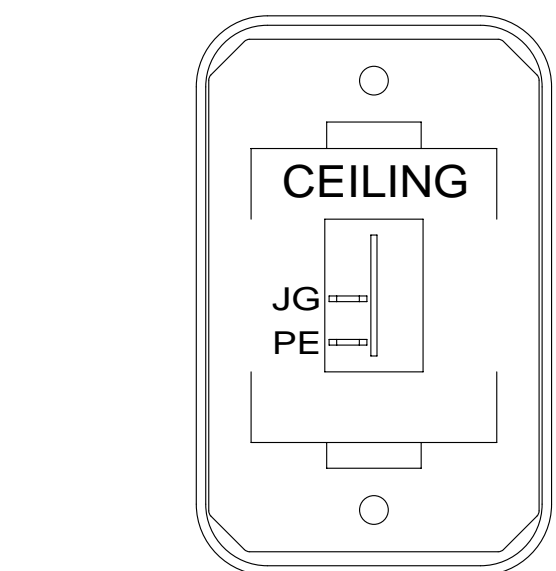
PASSENGER'S SIDE REAR

SWITCH 108357-06-000 ACTUATOR 108356-24-CHT CIRCUITS DR,DT,DU, BBA,DDJ,BBA

SWITCH 108357-06-000 ACTUATOR 108356-24-CHT CIRCUITS LLZ,DT,MMC, BBA,DDJ,BBA

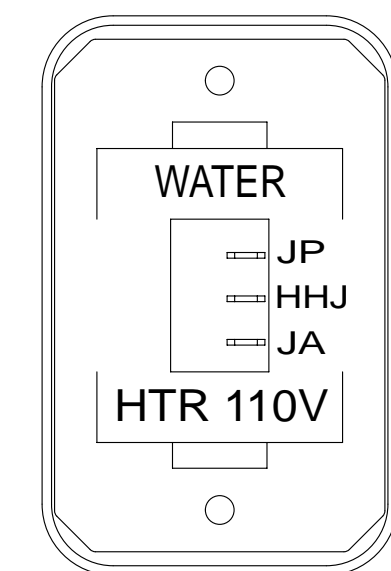
LABEL-SLIDEOUT PASS,REAR 163992-03-CHT

DETAIL DG



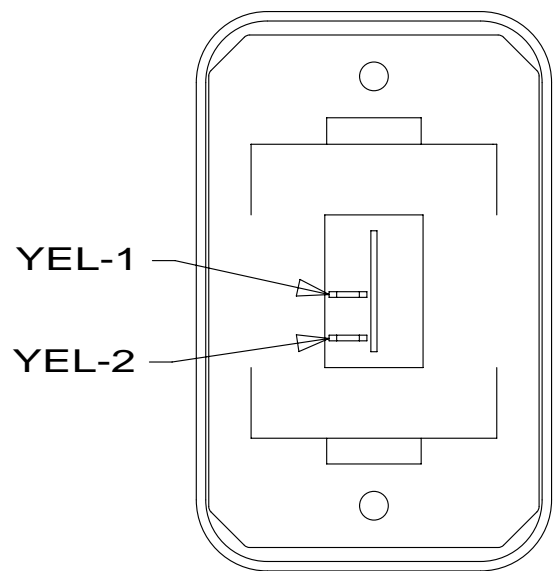
SWITCH-ROCKER 135740-01-CHT SWITCH-BASE 135741-01-CHT SWITCH-BEZEL 135742-07-CHT SCREW G11-08-08U (2)

DETAIL DB



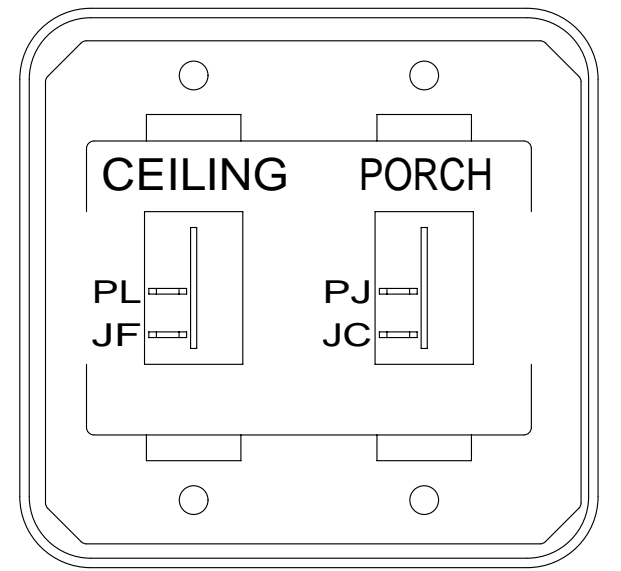
SWITCH-ROCKER 135740-06-CHT SWITCH-BASE 135741-01-CHT SWITCH-BEZEL 135742-35-CHT SCREW G11-08-08U (2)

DETAIL DF



SWITCH-ROCKER 135740-01-CHT SWITCH-BASE 135741-01-CHT SWITCH-BEZEL 135742-01-CHT SCREW G11-08-08U (2)

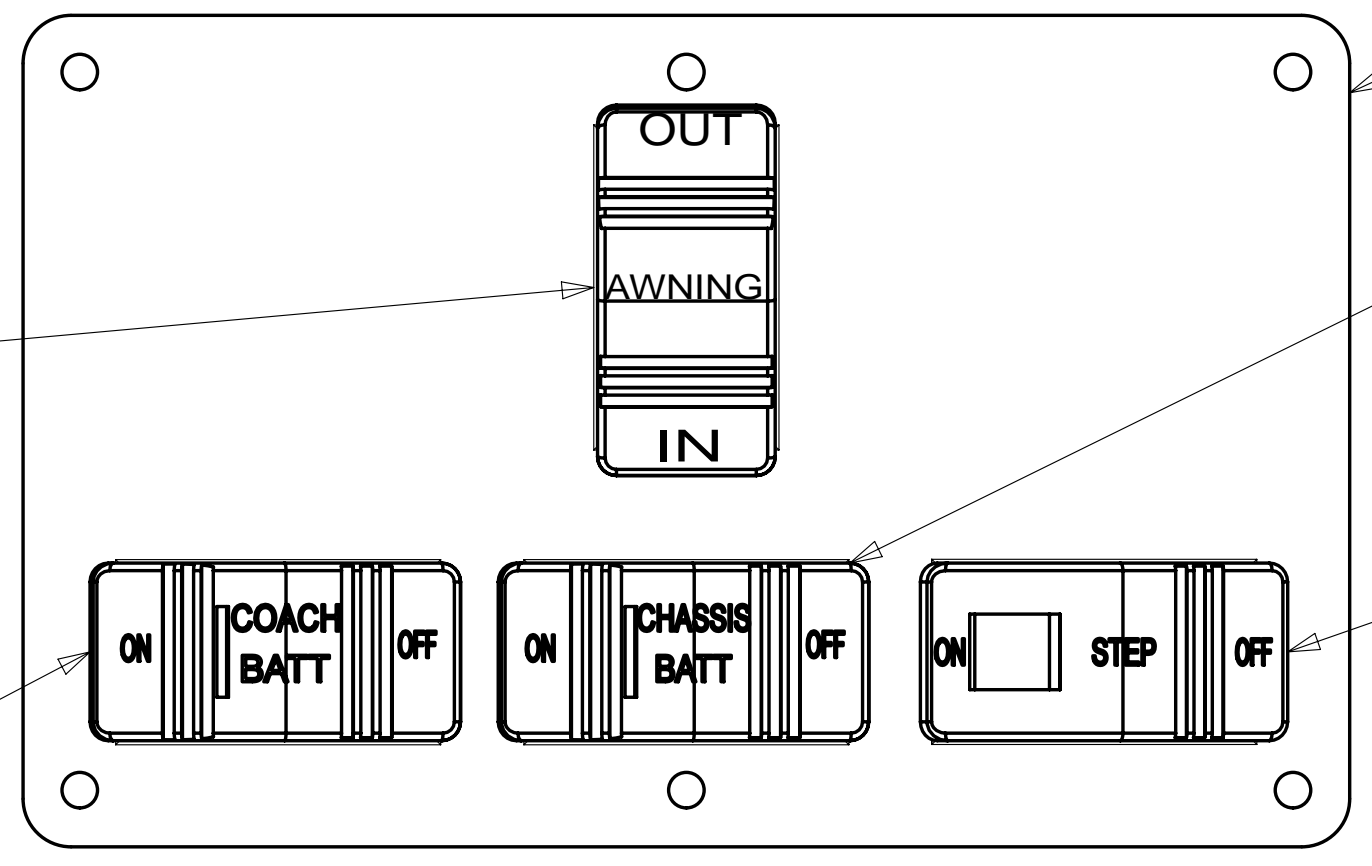
DETAIL DC



SWITCH-ROCKER 135740-01-CHT (2) SWITCH-BASE 135741-02-CHT SWITCH-BEZEL 135742-19-CHT SCREW G11-08-08U (4)

DETAIL DD

SWITCH-AWNING 108357-06-000 ACTUATOR-SWITCH 108356-12-CHT CIRCUITS FFD,FFR,FFE, FFE,JJR,FFD



DETAIL DH 1

PLATE-SWITCH 158431-15-CHT SCREW G11-06-10U (6)

SWITCH-CHASSIS BATTERY 108357-18-000 ACTUATOR-SWITCH 108356-20-CHT CIRCUITS UUC,TTY,UUB UUB,TTZ,MK

SWITCH-COACH BATT 108357-18-000 ACTUATOR-SWITCH 108356-19-CHT CIRCUITS KF,LG,LJ,LH,WC

SWITCH-STEP 108357-19-000 CIRCUITS ER,ES

NOTES:
1 FOR SWITCH ORIENTATION SEE DETAIL DE

FOR ELECTRICAL TORQUE SPECIFICATIONS SEE DWG NO. 128783-01-000

FOR ELECTRICAL CALLOUTS SEE DWG NO. 121339-01-000

265	CODES/STANDARDS-CSA/CMVSS
1B1	CODES/STANDARDS USA
1B1	265

FIRST USED	13 E27N
TITLE:	DO NOT SCALE DRAWING
	WIRING INSTL-BODY,12V
SHEET 4	PART NO 182292 REV

8

7

6

5

4

3

2

1

1

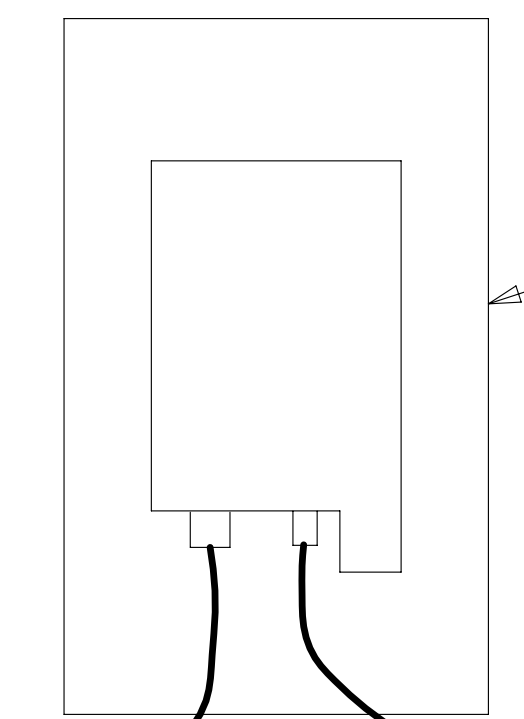
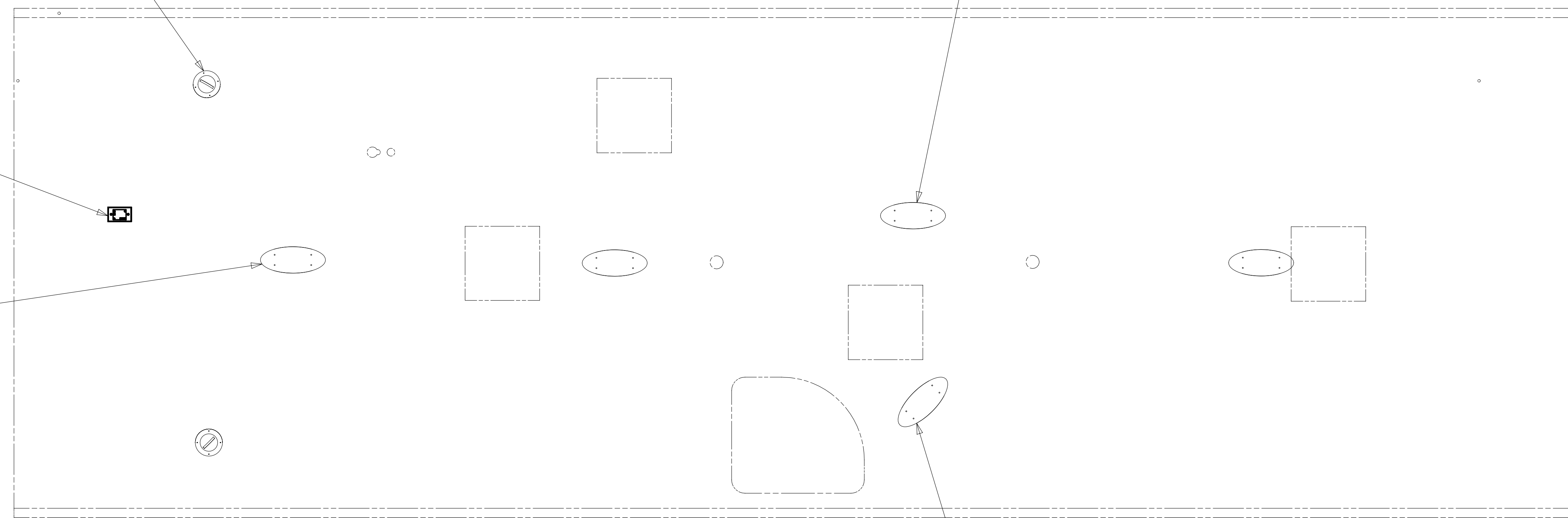
255 SPEAKER-ROUND,CEILING
160867-01-CHT (2)
SCREW
G1208-12-170 (8)

SATELLITE
ELEVATION
SENSOR
DETAIL EA

LOSN3

LO2-3
3

LOSN3



3 PIN HOUSING
FROM WIRE ASM-
ELEVATION SENSOR

2 PIN HOUSING
FROM WIRE ASM-ROOF

DETAIL EA

1 SENSOR SUPPLIED WITH SATELLITE ASSEMBLY.

NOTES:

- 255 RADIO/AM/FM/CD/DVD PLAYER
- 265 CODES/STANDARDS-CSA/CMVSS
- 1B1 CODES/STANDARDS USA

1B1 265

FIRST USED	13 E27N	
DO NOT SCALE DRAWING		
TITLE: WIRING INSTL-BODY,12V		
SHEET 5	PART NO 182292	REV

FOR ELECTRICAL
TORQUE
SPECIFICATIONS
SEE DWG NO.
128783-01-000

X-X
FOR
ELECTRICAL
CALLOUTS
SEE DWG NO.
121339-01-000

8

7

6

5

4

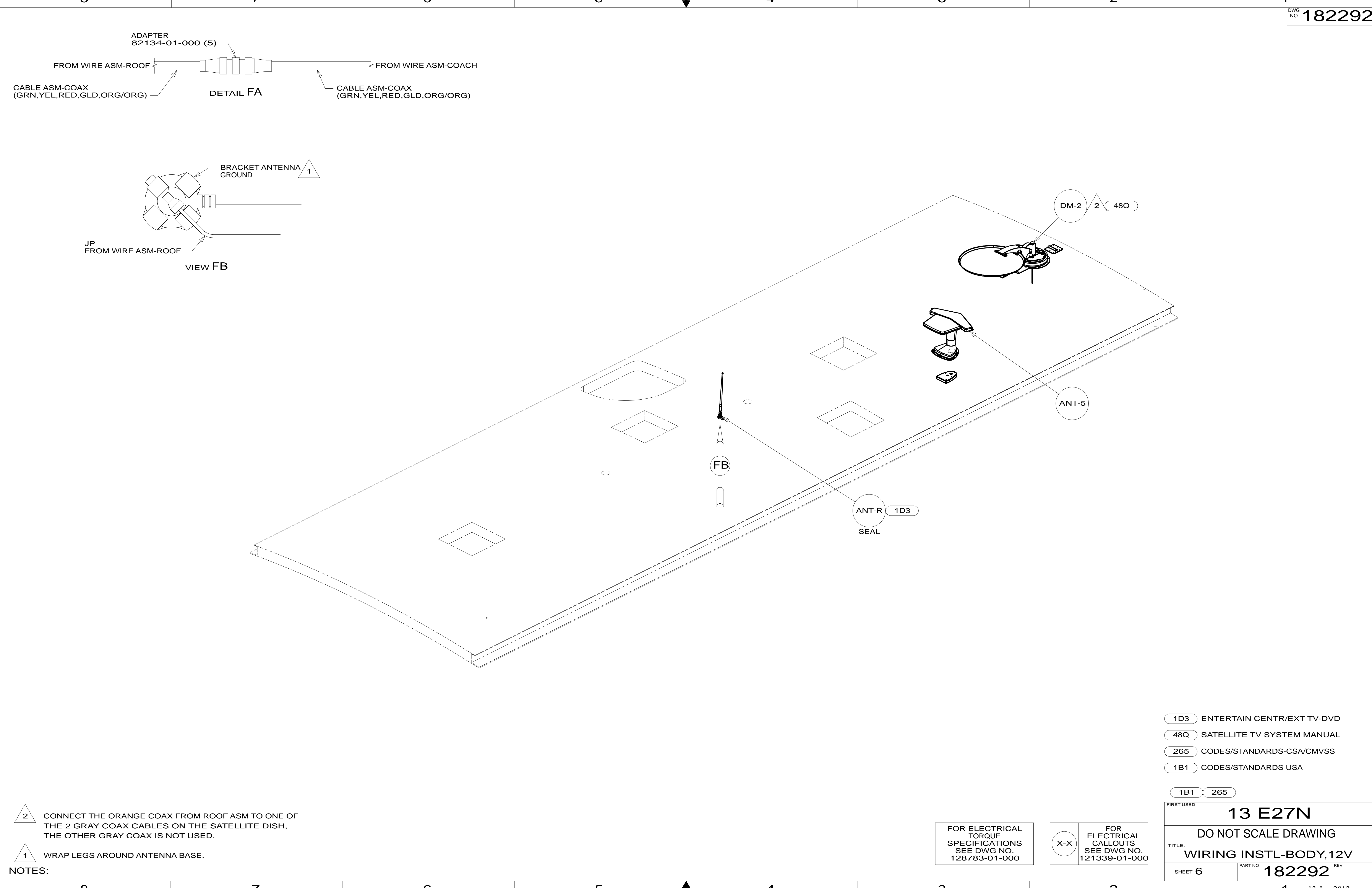
3

2

1

1

13-Jun-2012



- NOTES:
- 2 CONNECT THE ORANGE COAX FROM ROOF ASM TO ONE OF THE 2 GRAY COAX CABLES ON THE SATELLITE DISH, THE OTHER GRAY COAX IS NOT USED.
 - 1 WRAP LEGS AROUND ANTENNA BASE.

- 1D3 ENTERTAIN CENTR/EXT TV-DVD
- 48Q SATELLITE TV SYSTEM MANUAL
- 265 CODES/STANDARDS-CSA/CMVSS
- 1B1 CODES/STANDARDS USA

FIRST USED	
13 E27N	
DO NOT SCALE DRAWING	
TITLE: WIRING INSTL-BODY,12V	
SHEET 6	PART NO 182292 REV

FOR ELECTRICAL TORQUE SPECIFICATIONS SEE DWG NO. 128783-01-000

FOR ELECTRICAL CALLOUTS SEE DWG NO. 121339-01-000

