



DANGER

Danger of electrical shock, burns or death. Always remove all power sources before attempting any repair, service or diagnostic work. Power can be present from shore power, generator, inverter or battery. All power sources must be disabled and secured before performing any service.



CAUTION

If you lack the skills, tools or equipment to perform diagnostic or repair work leave such work to an authorized Winnebago Industries dealer or other qualified shop.

8 7 6 5 4 3 2 1

D

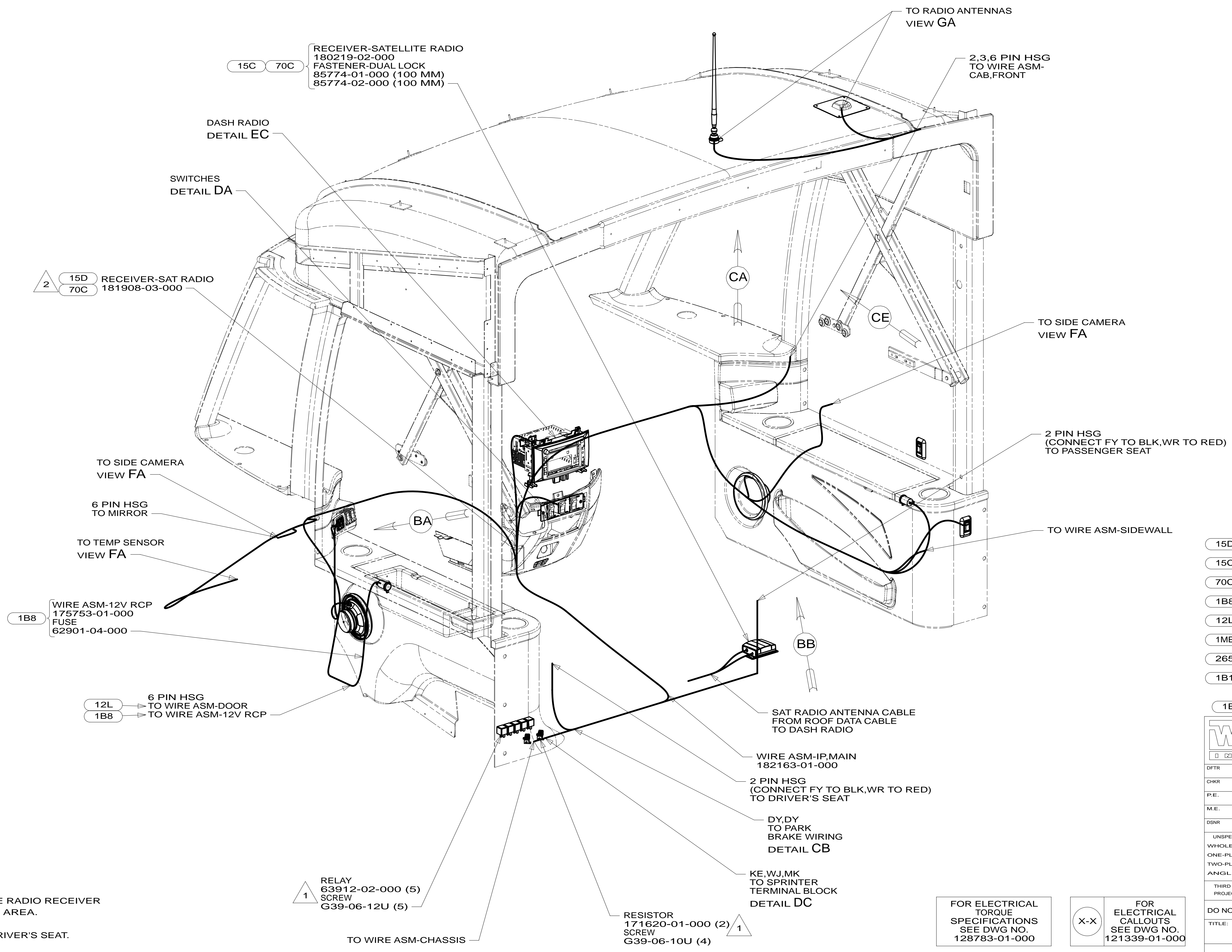
C

B

A

NOTES:

- 2 WIRE TIE SATELLITE RADIO RECEIVER TO WIRING IN THIS AREA.
- 1 LOCATED BELOW DRIVER'S SEAT.



- 15D INFOTAINMENT CENTER/GPS
- 15C GPS-NAVIGATION SYSTEM W/O
- 70C RADIO - SATELLITE
- 1B8 DOOR-DRIVER WITHOUT
- 12L DOOR-DRIVER
- 1ME MERCEDES-11,030# DIESEL,COWL
- 265 CODES/STANDARDS-CSA/CMVSS
- 1B1 CODES/STANDARDS USA

		COPYRIGHT 2013 WINNEBAGO INDUSTRIES, INC.
DTR	ORIG. DATE	
CHKR	ALL DIMENSIONS ARE IN MILLIMETERS	
P.E.		
M.E.	FIRST USED	
DSNR		13 H-SERIES
UNSPECIFIED TOLERANCES ARE:		MATERIAL:
WHOLE DIM (X)	: 3	
ONE-PLACE (X.X)	: 1.5	
TWO-PLACE (X.XX)	: 0.50	
ANGLE	: 1°	
THIRD ANGLE PROJECTION		
DO NOT SCALE DRAWING	REFER TO ES0018 FOR FASTENER TIGHTENING GUIDELINES	
TITLE: WIRING INSTL-FRONT END		
SHEET 1 OF 7	PART NO	182136
REF:	1	16-Jan-2013

FOR ELECTRICAL TORQUE SPECIFICATIONS SEE DWG NO. 128783-01-000

X-X FOR ELECTRICAL CALLOUTS SEE DWG NO. 121339-01-000

8 7 6 5 4 3 2 1

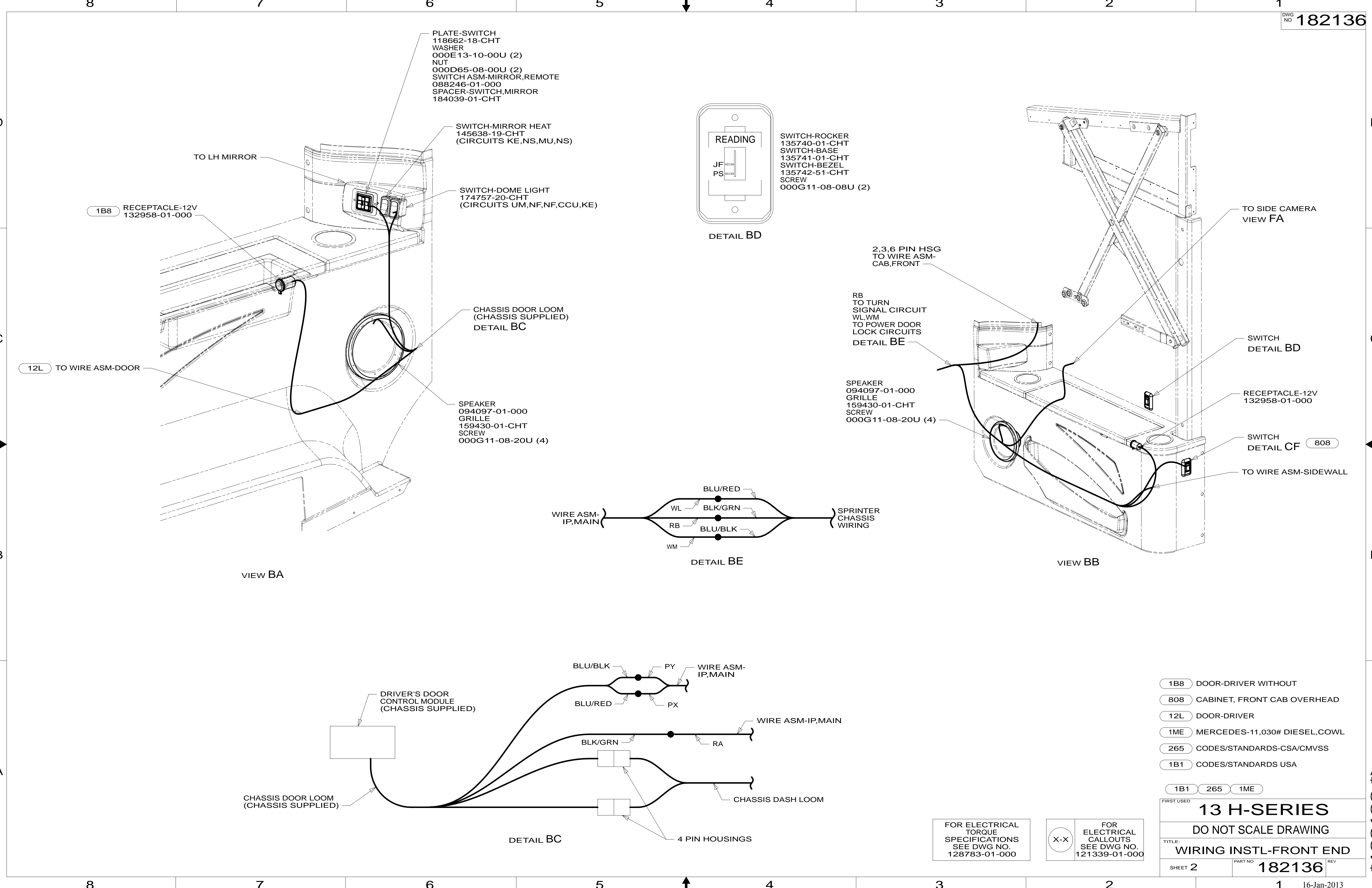
D

C

B

A

* 182136 *



- 1B8 DOOR-DRIVER WITHOUT
- 808 CABINET, FRONT CAB OVERHEAD
- 12L DOOR-DRIVER
- 1ME MERCEDES-11,030# DIESEL,COWL
- 265 CODES/STANDARDS-CSA/CMVSS
- 1B1 CODES/STANDARDS USA

1B1	265	1ME
FIRST USED		
13 H-SERIES		
DO NOT SCALE DRAWING		
TITLE: WIRING INSTL-FRONT END		
SHEET 2	PART NO 182136	REV

FOR ELECTRICAL TORQUE SPECIFICATIONS SEE DWG NO. 128783-01-000

FOR ELECTRICAL CALLOUTS SEE DWG NO. 121339-01-000

* 182136 *

8 7 6 5 4 3 2 1

D

D

C

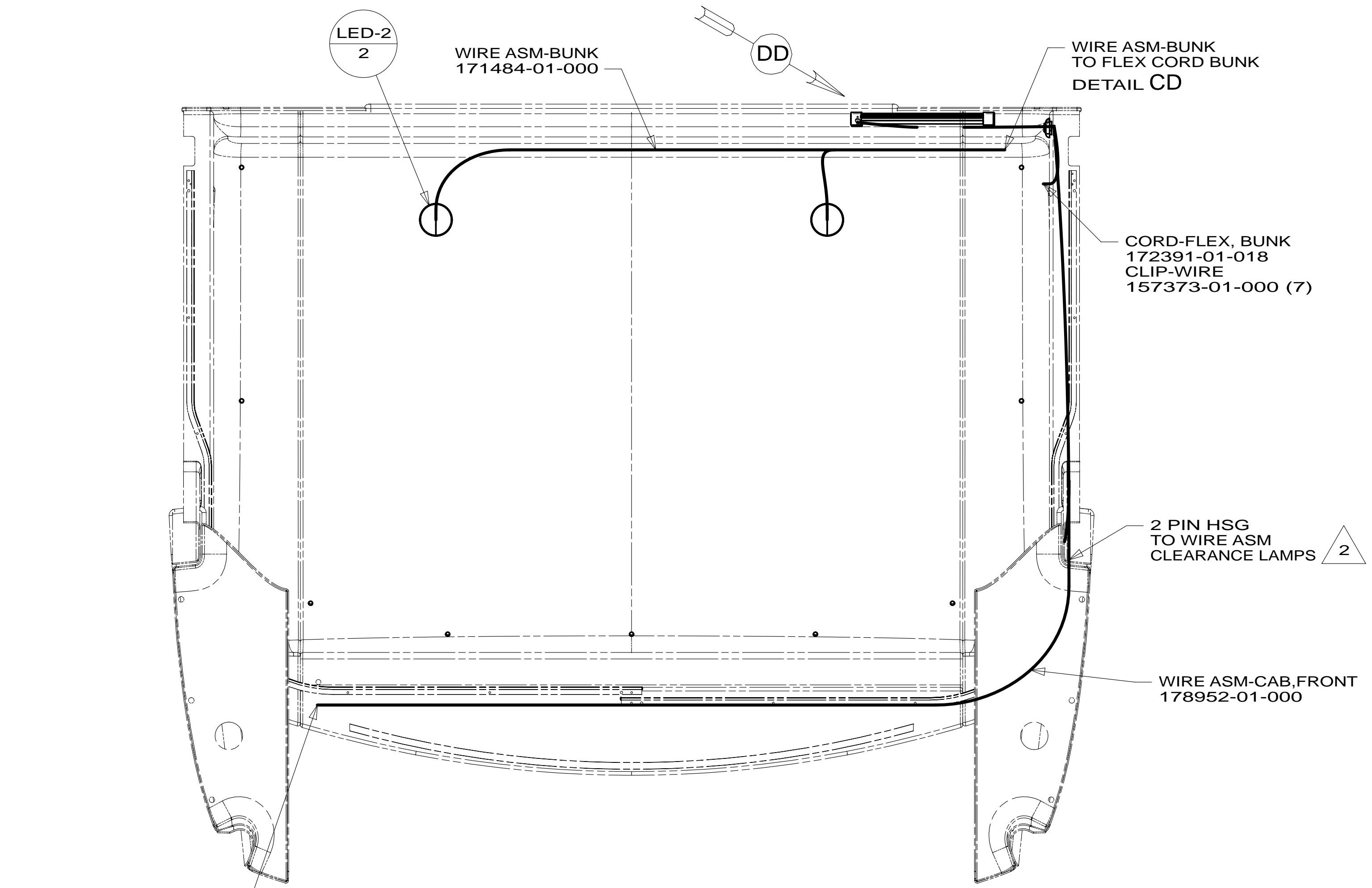
C

B

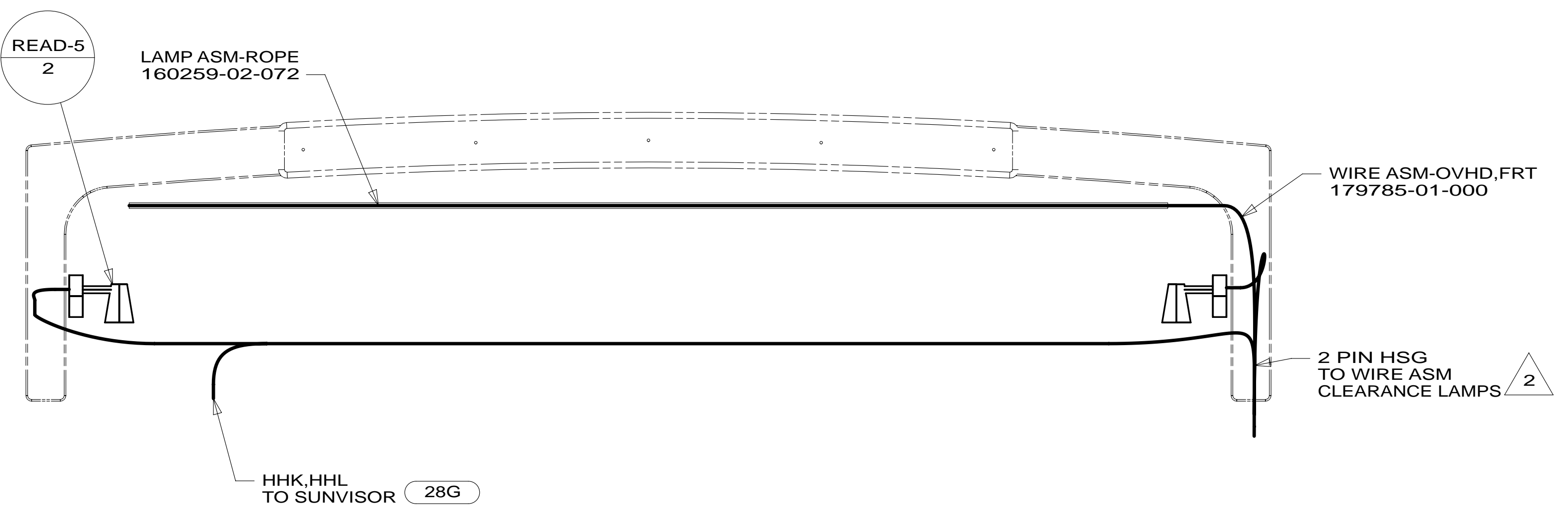
B

A

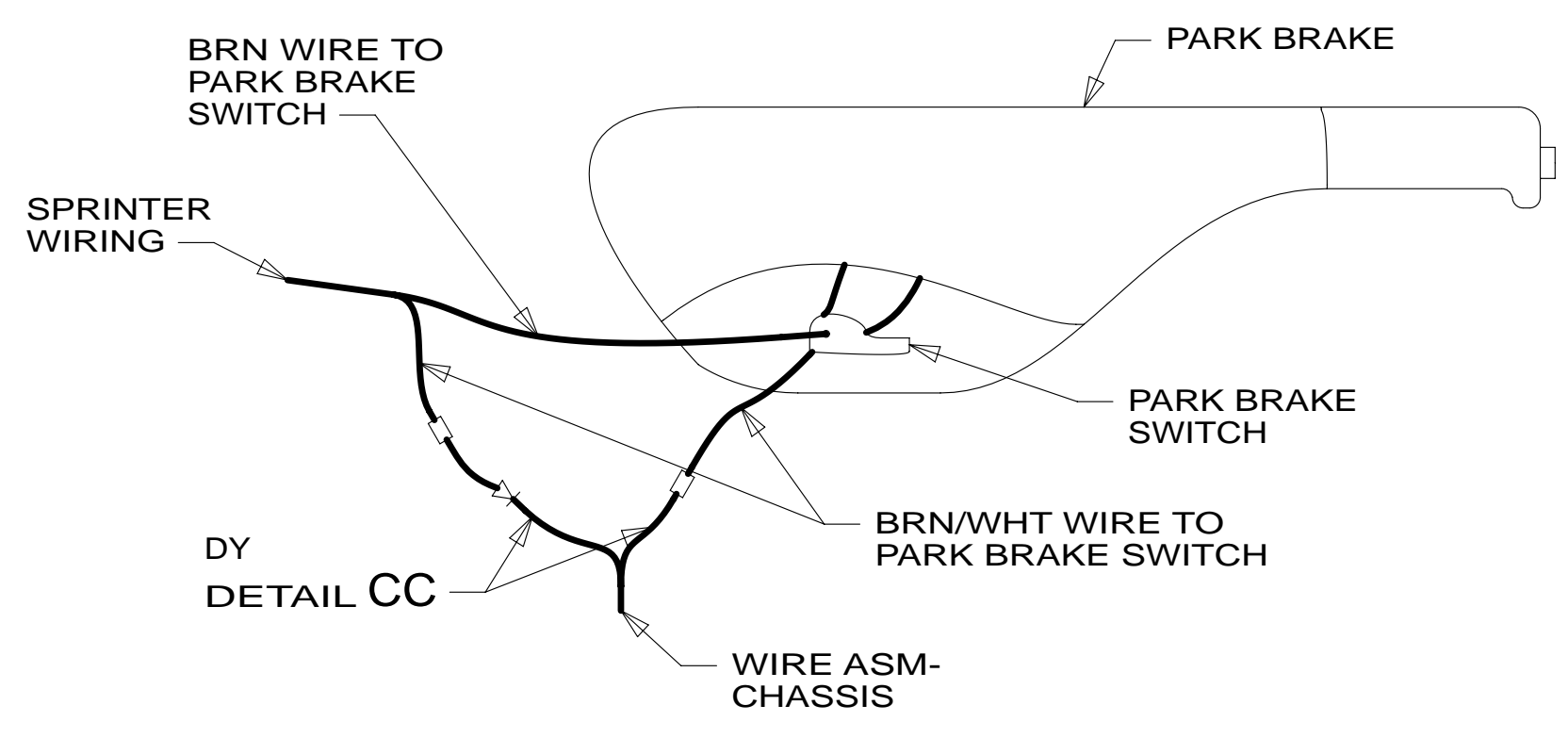
A



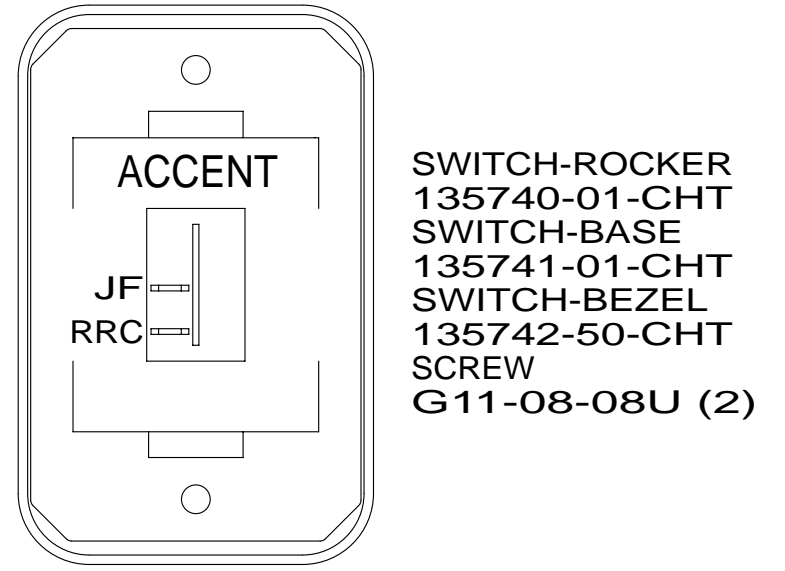
VIEW CA 50R



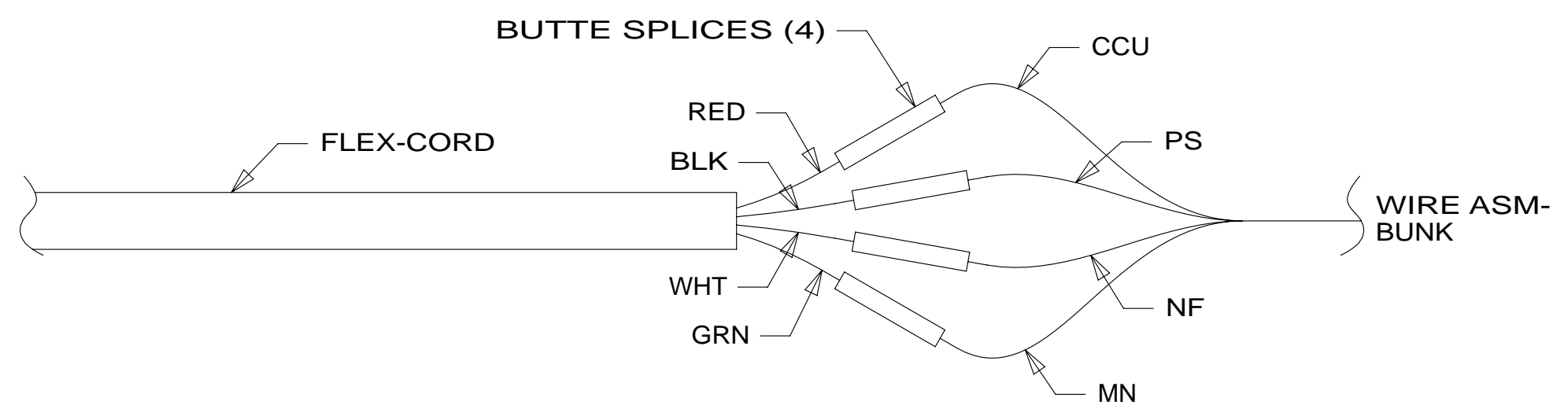
VIEW CE 808



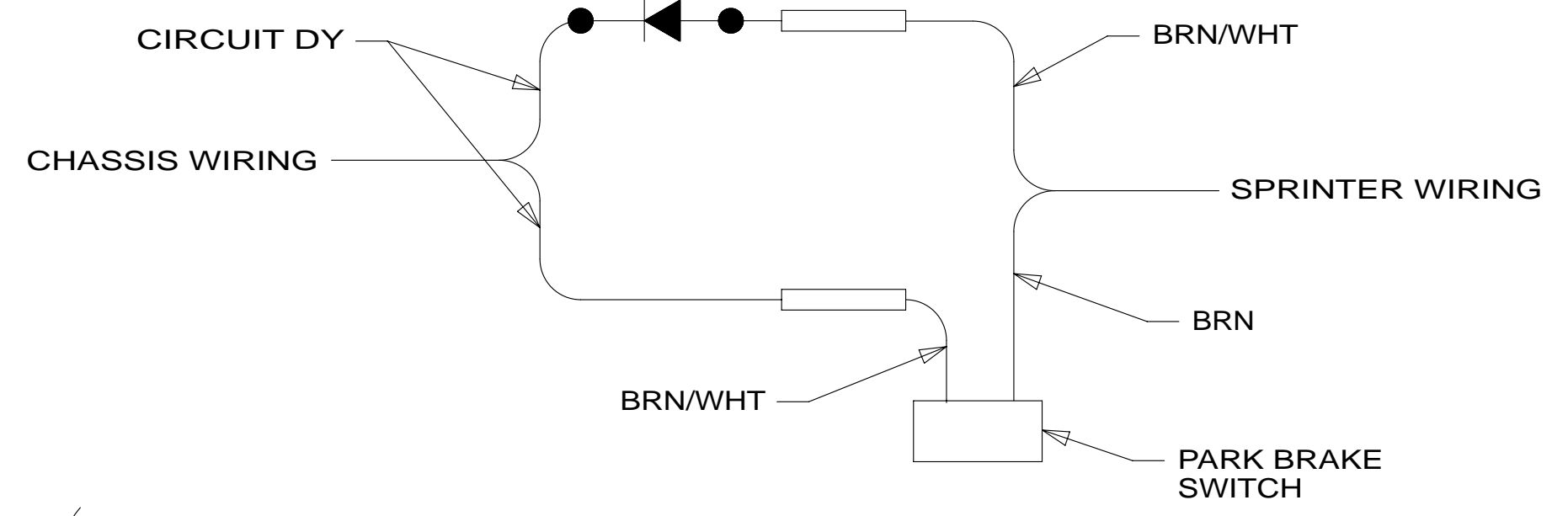
DETAIL CB



DETAIL CF 808



DETAIL CD 50R



DETAIL CC 1

- 808 CABINET, FRONT CAB OVERHEAD
- 50R FRONT BUNK-PULL DOWN
- 28G SUNVISOR-POWERED (1)
- 1ME MERCEDES-11,030# DIESEL, COWL
- 265 CODES/STANDARDS-CSA/CMVSS
- 1B1 CODES/STANDARDS USA

FIRST USED		
13 H-SERIES		
DO NOT SCALE DRAWING		
TITLE: WIRING INSTL-FRONT END		
SHEET 3	PART NO 182136	REV
16-Jan-2013		

NOTES:

2 SEE WIRING INSTL-EXTERIOR LAMPS FOR ADDITIONAL INFORMATION.

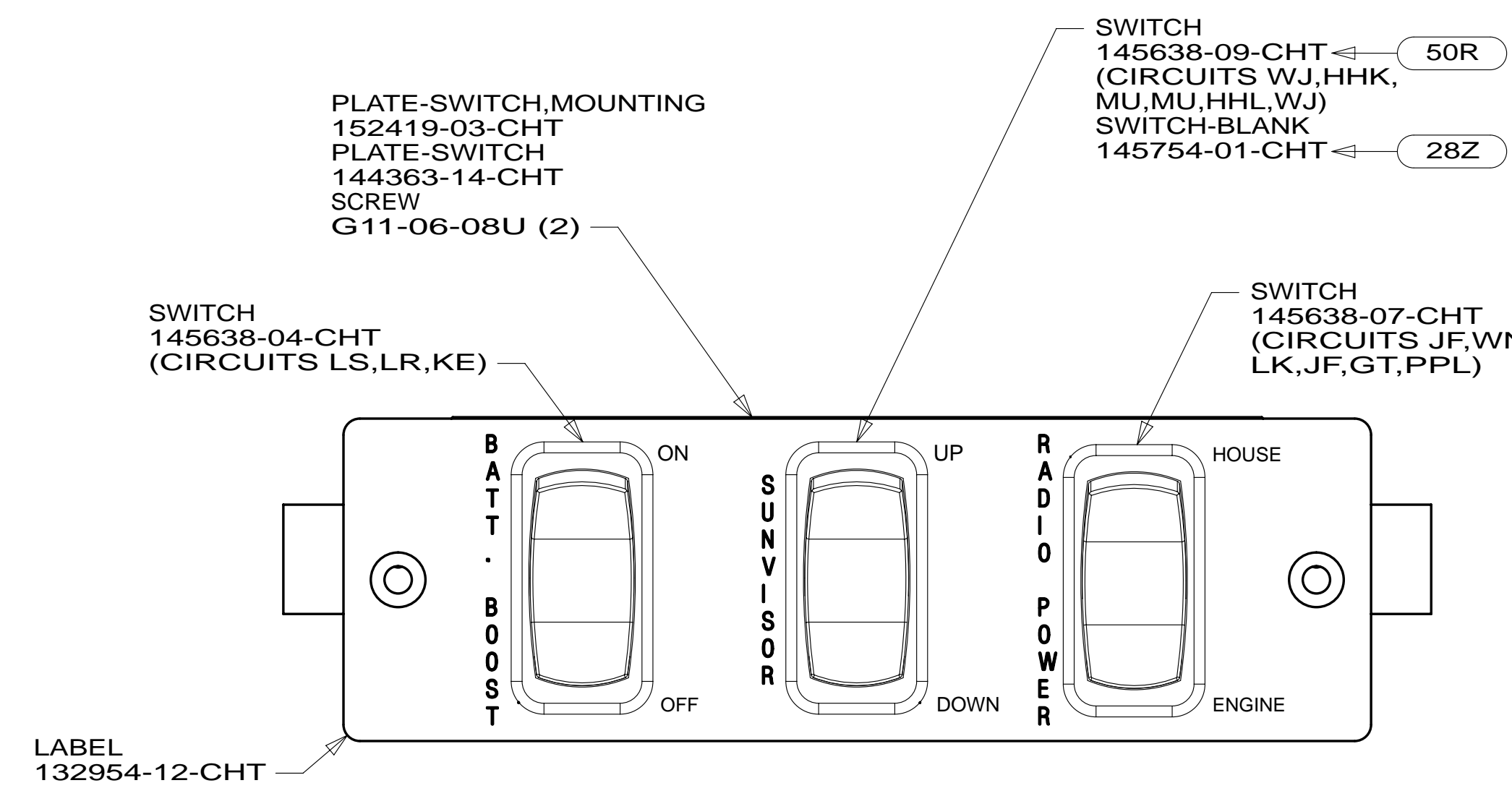
1 CUT BRN/WHT WIRE FROM PARK BRAKE SWITCH AND RECONNECT TO CIRCUIT DY OF WIRE ASM-CHASSIS AS SHOWN.

FOR ELECTRICAL TORQUE SPECIFICATIONS SEE DWG NO. 128783-01-000

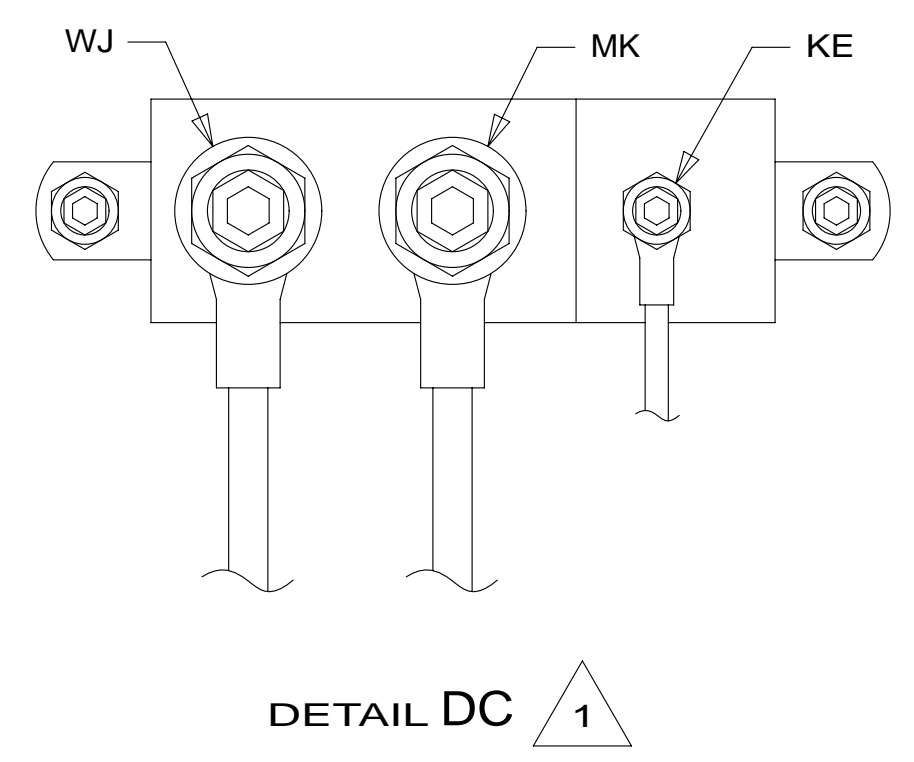
FOR ELECTRICAL CALLOUTS SEE DWG NO. 121339-01-000

8 7 6 5 4 3 2 1

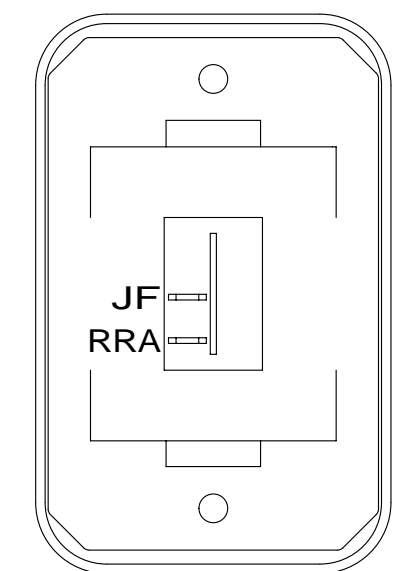
* 182136 *



VIEW DA

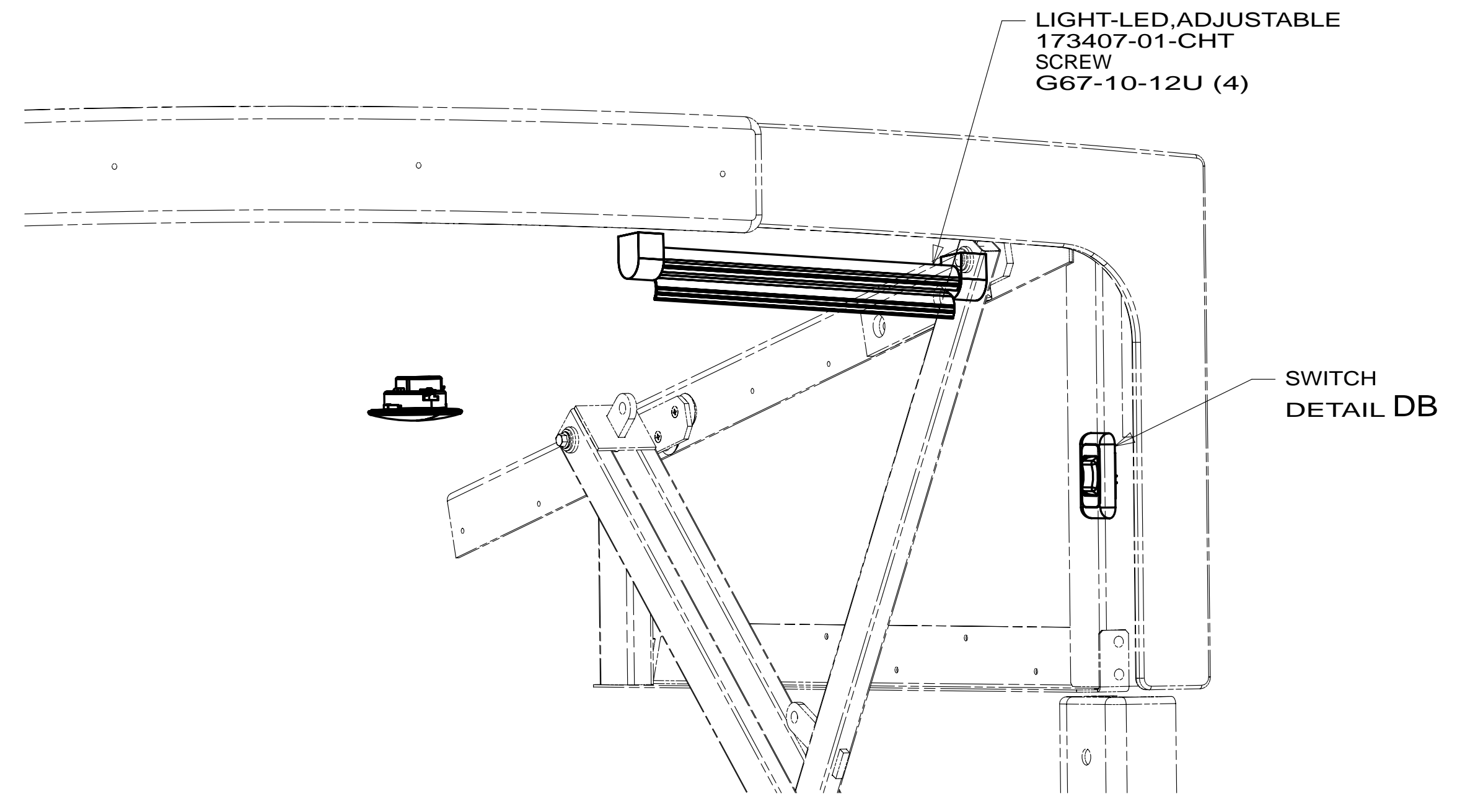


DETAIL DC 1



DETAIL DB

SWITCH-ROCKER
135740-01-CHT
SWITCH-BASE
135741-01-CHT
SWITCH-BEZEL
135742-01-CHT
SCREW
G11-08-08U (2)



DETAIL DD 50R

- 28Z SUNVISORS - MANUAL(3)
- 50R FRONT BUNK-PULL DOWN
- 1ME MERCEDES-11,030# DIESEL,COWL
- 265 CODES/STANDARDS-CSA/CMVSS
- 1B1 CODES/STANDARDS USA

1B1 265 1ME

FIRST USED
13 H-SERIES

DO NOT SCALE DRAWING

TITLE: **WIRING INSTL-FRONT END**

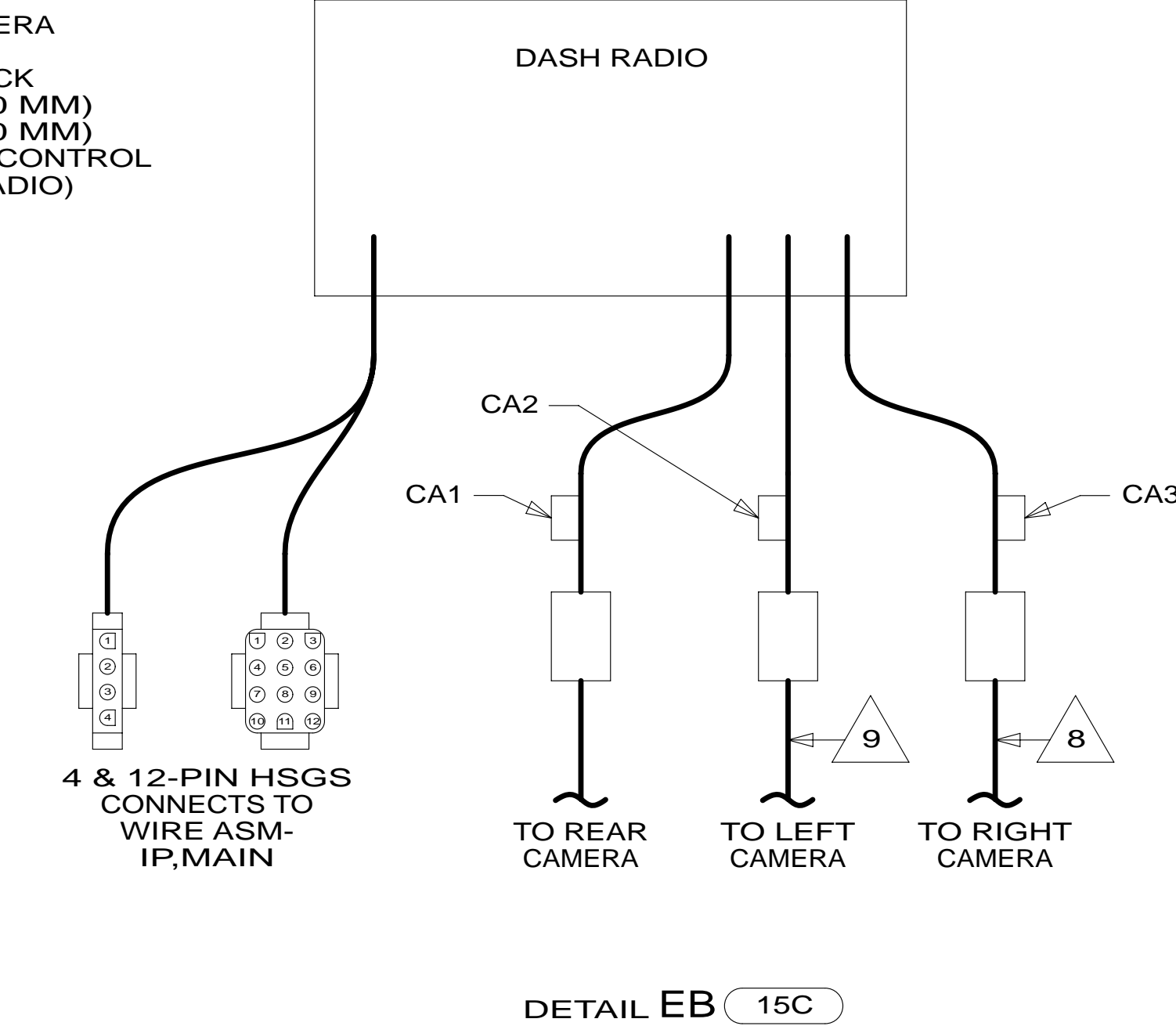
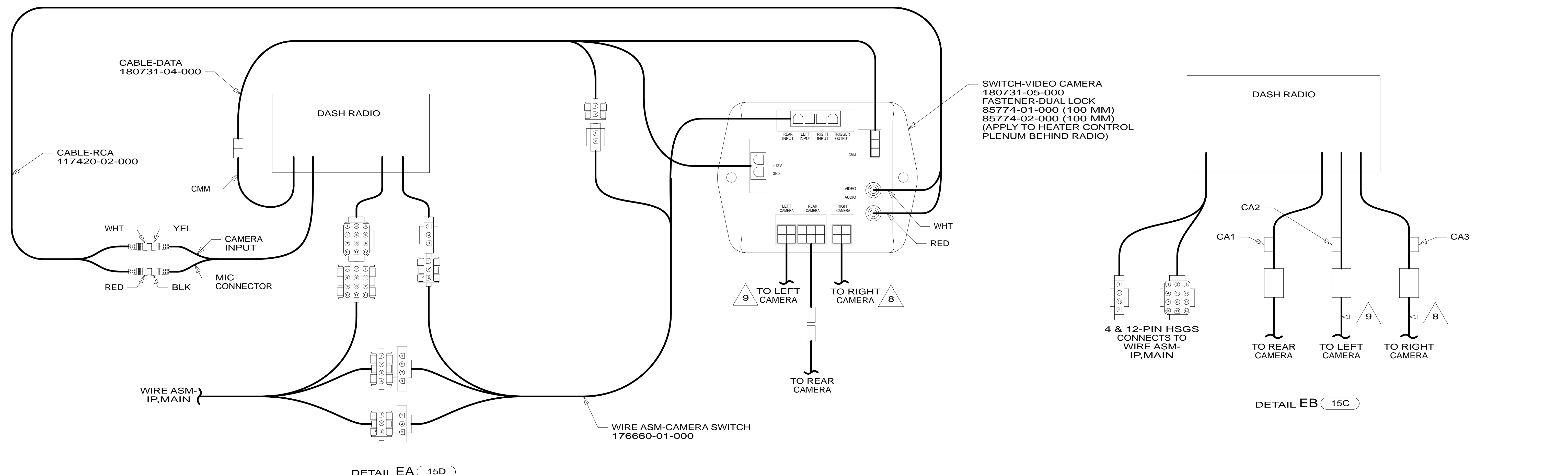
SHEET 4 PART NO **182136** REV

FOR ELECTRICAL TORQUE SPECIFICATIONS SEE DWG NO. 128783-01-000

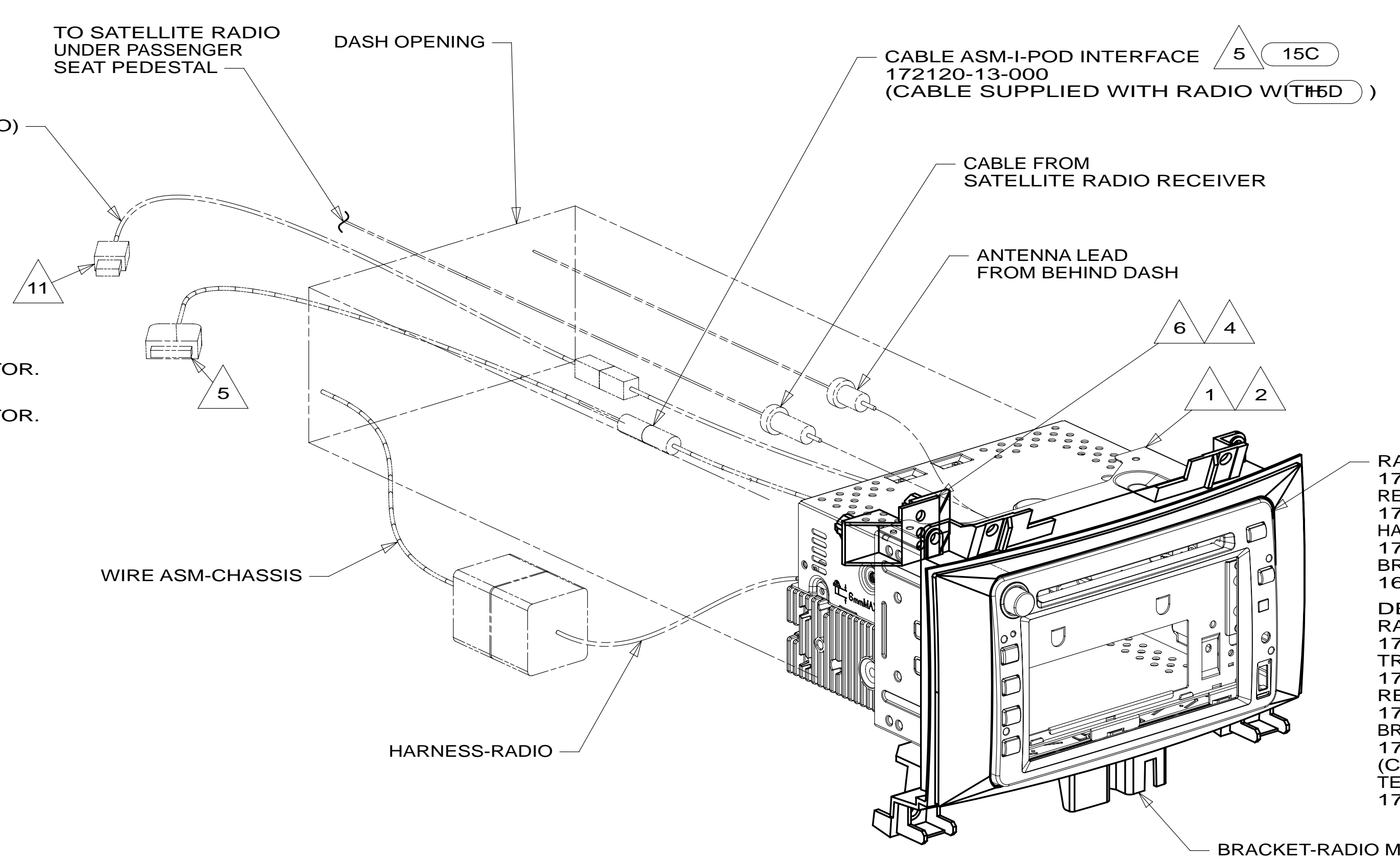
FOR ELECTRICAL CALLOUTS SEE DWG NO. 121339-01-000

NOTES:
1 CONNECTION POINT IS LOCATED UNDER DRIVER'S SEAT.

* 182136 * A



- NOTES:**
- 11 ROUTE USB CABLE ALONG WITH IPOD CABLE TO TRAY ON TOP OF DASH ABOVE RADIO.
 - 10 MOUNT GPS ANTENNA ON TOP OF DEFROST PLENUM BEHIND RADIO.
 - 9 MARK LEFT CABLE WITH YELLOW TAPE 900000-07-000 NEXT TO CONNECTOR.
 - 8 MARK RIGHT CABLE WITH WHITE TAPE 900000-08-000 NEXT TO CONNECTOR.
 - 7 ROUTE TEMP SENSOR CABLE FROM RADIO ALONG WITH CAMERA CABLE TO DRIVER'S SIDE OF CAB THEN ROUTE SENSOR CABLE BEHIND FENDER TO FRONT BUMPER. SEE SHEET 6.
 - 6 SUPPLIED WITH RADIO MOUNT BRACKET.
 - 5 PLUG I-POD CABLE INTO LEAD ON BACK OF RADIO MARKED I-POD. DRILL 16 MM DIAMETER HOLE IN THE TRAY ABOVE THE RADIO. THE HOLE IS TO BE LOCATED ON THE PASSENGER SIDE OF THE TRAY 50 MM FROM THE END NEAREST THE WINDSHIELD. ROUTE I-POD CABLE INTO THE TRAY AND LEAVE 200 MM OF WIRE IN THE TRAY.
 - 4 INSTALL REAR SUPPORT TO TOP EDGE OF RADIO.
 - 3 TO BE SUPPLIED LOOSE IN WINNEBAGO OWNERS CASE.
 - 2 BEND TABS ON ALL 4 SIDES TO SECURE MOUNTING BRACKET TO DASH OPENING.
 - 1 SUPPLIED WITH RADIO.



RADIO-AM/FM/CD
 172120-17-000
 REMOTE CONTROL
 172120-07-000
 HARNESS
 172120-11-000
 BRACKET-RADIO MOUNT
 168430-03-000

DETAIL EB
 RADIO-INFOTAINMENT
 176654-14-000
 TRIM-RADIO MOUNTING
 176654-08-000
 REMOTE-NAVIGATION/RADIO
 176654-04-000
 BRACKET
 178610-01-000
 (CHASSIS SUPPLIED)
 TEMP SENSOR
 176654-13-000

19V
15C
15D **10**
15D **10**

15D GPS-NAVIGATION SYSTEM
15C GPS-NAVIGATION SYSTEM W/O
19R RADIO/REARVIEW MONITOR SYS
70C RADIO - SATELLITE
19V RADIO-AM/FM STEREO CD PLAYER
265 CODES/STANDARDS-CSA/CMVSS
1B1 CODES/STANDARDS USA

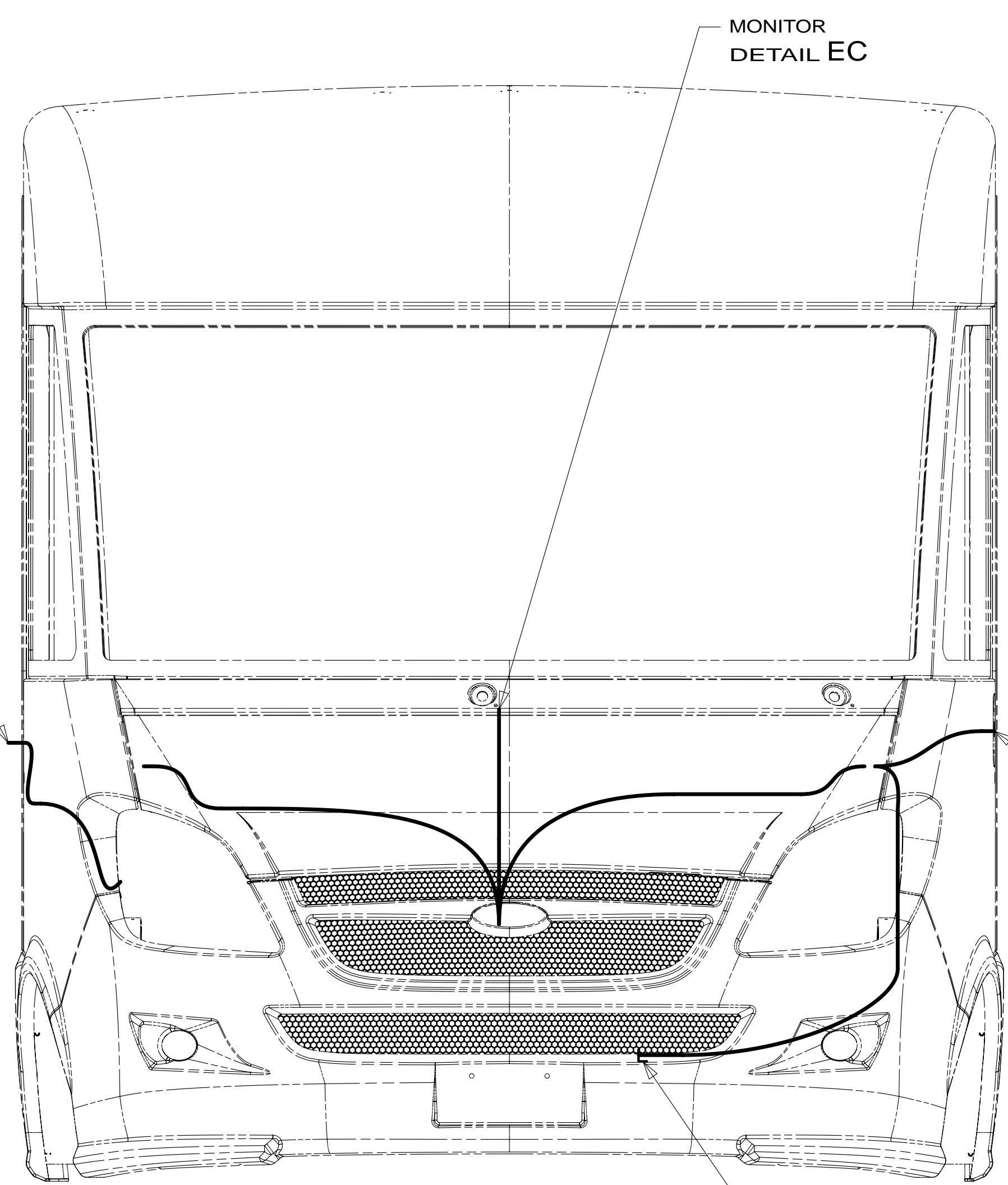
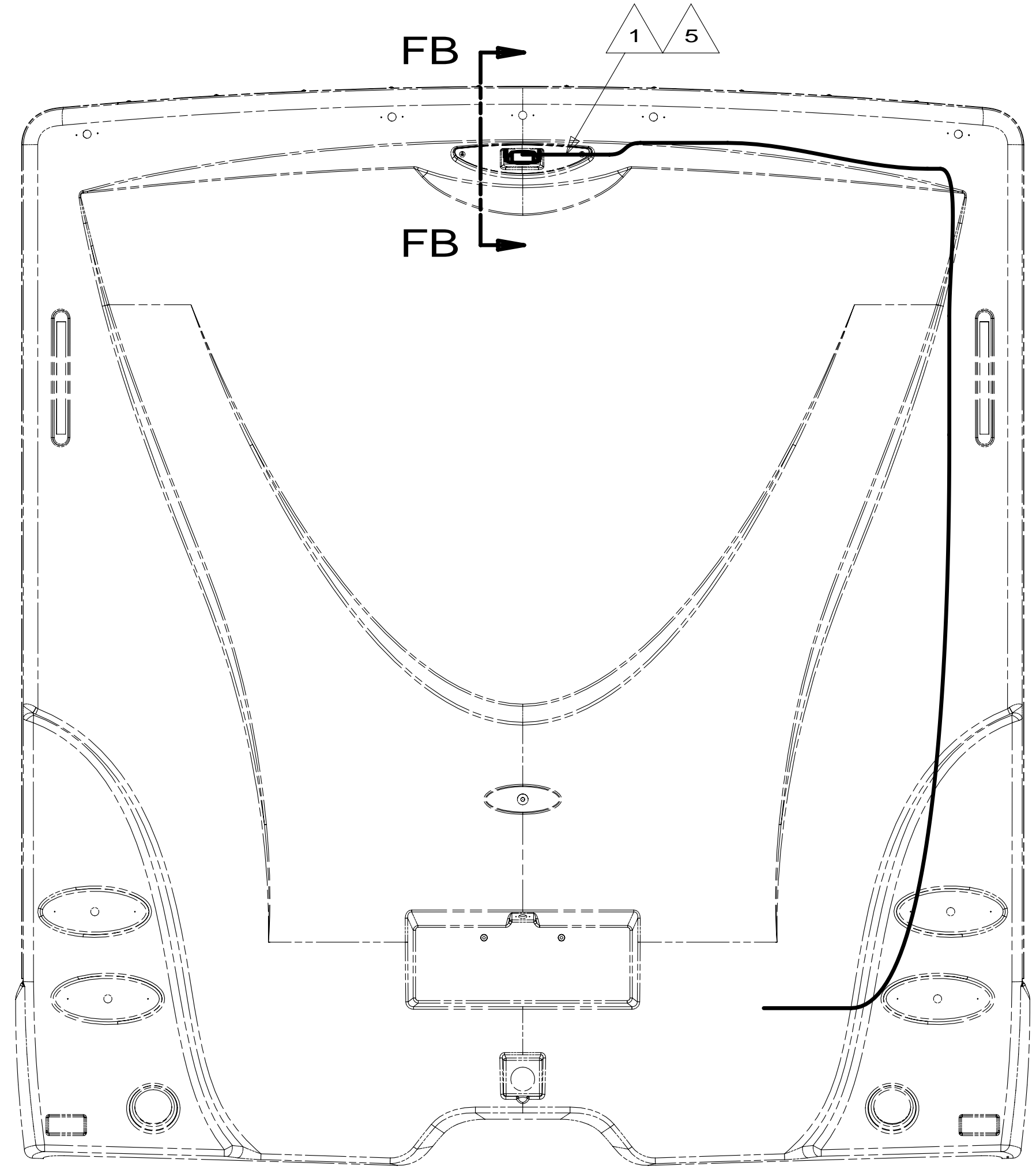
1B1 **265**

13 H-SERIES
DO NOT SCALE DRAWING
WIRING INSTL-FRONT END
 SHEET 5 PART NO 182136 REV 16-Jan-2013

FOR ELECTRICAL TORQUE SPECIFICATIONS SEE DWG NO. 128783-01-000

FOR ELECTRICAL CALLOUTS SEE DWG NO. 121339-01-000

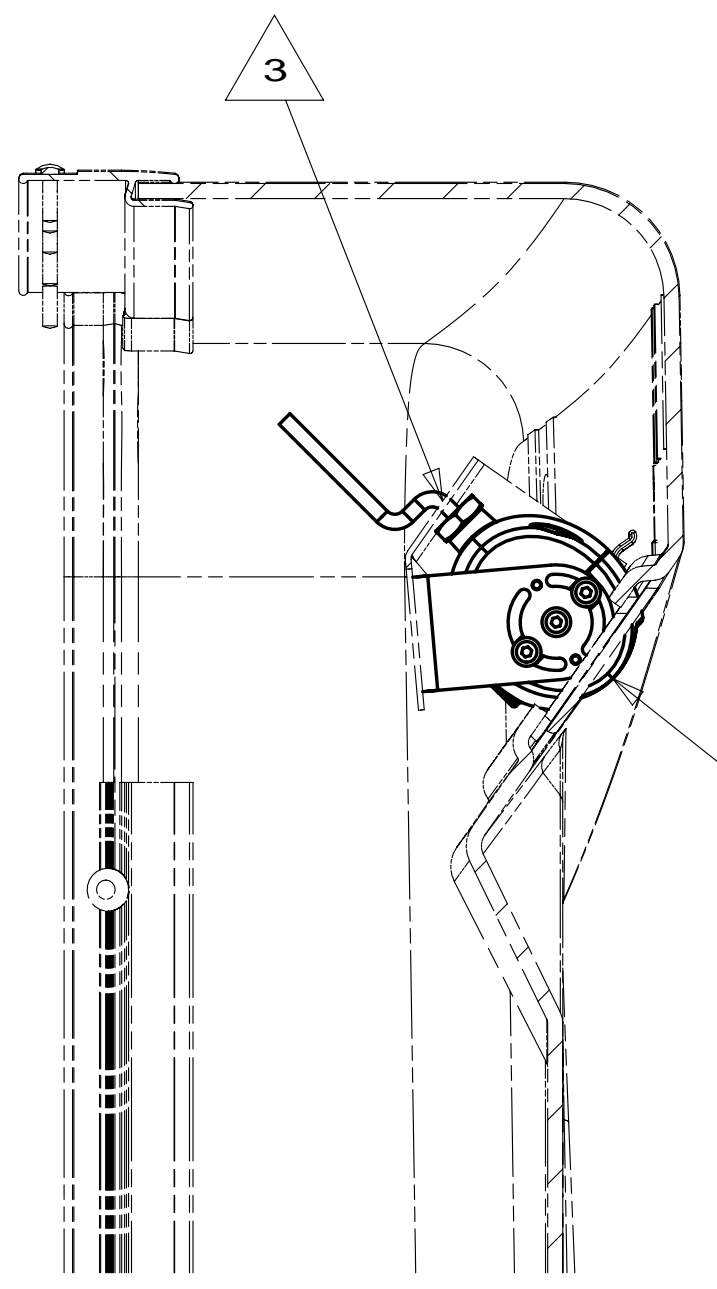
* 182136



- 2 74C & 15C CABLE-MONITOR 144677-15-000
- 2 74C & 15D CABLE-MONITOR 144677-21-000

- 74C & 15C 2 CABLE-MONITOR 144677-15-000
- 74C & 15D 2 CABLE-MONITOR 144677-21-000

- 4 BRACKET-TEMP SENSOR 147428-01-CHT
- SCREW G39-08-08U (2)



- 74J & 15C CAMERA-REARVIEW 181408-01-CHT
- SCREW G39-10-12U (EXT)(5)
- 74J & 15D CAMERA-REARVIEW 176654-09-CHT
- SCREW G39-10-12U (EXT)(4)

SECTION FB-FB

- NOTES:
- 5 SECURE CABLE TO BACKWALL USING CABLE TIE 108046-02-000 OR EQUIVALENT.
 - 4 MOUNT ON TOP OF BUMPER NEXT TO CHASSIS TEMP SENSOR.
 - 3 APPLY TAPE 180131-01-CHT TO SEAL CAMERA CONNECTOR, THEN COVER WITH TAPE 8363-01-000. USE WITH 15D
 - 2 CONNECT CAMERA CABLE TO MIRROR AND SECURE CONNECTION WITH ELECTRICAL TAPE 008363-01-000.
 - 1 ROUTE CAMERA CABLE UP BACKWALL TO REAR VIEW CAMERA

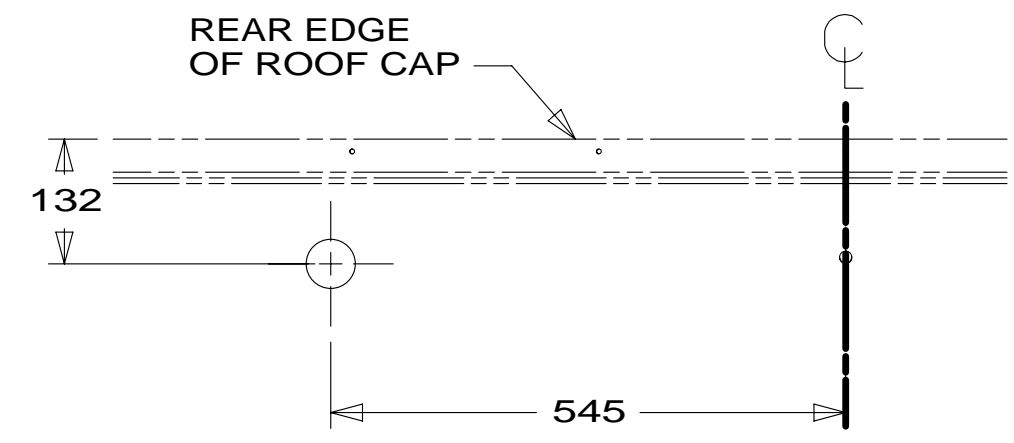
- 15D GPS-NAVIGATION SYSTEM
- 15C GPS-NAVIGATION SYSTEM W/O
- 74C VIDEO CAMERA SYSTEM
- 74J REARVIEW MONITOR SYS W/AUDIO
- 265 CODES/STANDARDS-CSA/CMVSS
- 1B1 CODES/STANDARDS USA

FIRST USED	
13 H-SERIES	
DO NOT SCALE DRAWING	
TITLE: WIRING INSTL-FRONT END	
SHEET 6	PART NO 182136 REV

FOR ELECTRICAL TORQUE SPECIFICATIONS SEE DWG NO. 128783-01-000

FOR ELECTRICAL CALLOUTS SEE DWG NO. 121339-01-000

* 182136 * A



DETAIL GB 70C

- ANTENNA-SATELLITE RADIO
- 177020-01-000 15C
- 181908-02-000 15C
- PLATE-SATELLITE RADIO 15D
- 177256-01-CHT 15C
- 177256-03-CHT 15D
- WASHER 15C
- E13-26-00U (2) 15D
- SCREW G11-08-08U (4) 15C
- SEAL
- DETAIL GB

- ANTENNA-RADIO 90944-01-000 2 6 7 8
- SCREW G39-08-12U

70C CABLE ASM-SAT (SUPPLIED WITH ANTENNA)

TO RADIO

CABLE ASM-ANTENNA (REF) 1 9

RECEIVER-SAT RADIO (REF)

VIEW GA

- 9 CABLE IS INTEGRATED INTO WIRE ASM-IP,MAIN.
- 8 REMOVE AND REINSTALL AFTER PAINT.
- 7 CUT AND REMOVE A 75MM X 75MM AREA OF THE ALUMINUM INSULATION, CENTERED ABOUT THE RADIO ANTENNA ROOF CAP.
- 6 USE SCREW TO ATTACH ANTENNA GROUND CABLE TO CAB STEEL STRUCTURE.
- 5 ROUTE SATELLITE RADIO ANTENNA CABLE FROM PASSENGER SEAT PEDESTAL UP A-PILLAR TO ROOF CAP.
- 4 SEE WIRING INSTL-CHASSIS FOR ADDITIONAL INFORMATION.
- 3 MOUNT ANTENNA SUCH THAT BASE IS SQUARE W/REAR OF ROOF CAP & CENTER HOLE OF ANTENNA DIRECTLY OVER HOLE IN FIBERGLASS. SEAL HOLE, BASE, AND SCREWS.
- 2 SEAL AROUND ANTENNA BASE.
- 1 ROUTE RADIO ANTENNA CABLE FROM DASH RADIO UNDER DASH UP PASSENGER SIDE A-PILLAR TO ROOF CAP.

NOTES:

- 70C RADIO - SATELLITE
- 265 CODES/STANDARDS-CSA/CMVSS
- 1B1 CODES/STANDARDS USA

FIRST USED	
13 H-SERIES	
DO NOT SCALE DRAWING	
TITLE: WIRING INSTL-FRONT END	
SHEET 7	PART NO 182136 REV
16-Jan-2013	

FOR ELECTRICAL TORQUE SPECIFICATIONS SEE DWG NO. 128783-01-000

FOR ELECTRICAL CALLOUTS SEE DWG NO. 121339-01-000

* 182136 * A