



DANGER

Danger of electrical shock, burns or death. Always remove all power sources before attempting any repair, service or diagnostic work. Power can be present from shore power, generator, inverter or battery. All power sources must be disabled and secured before performing any service.

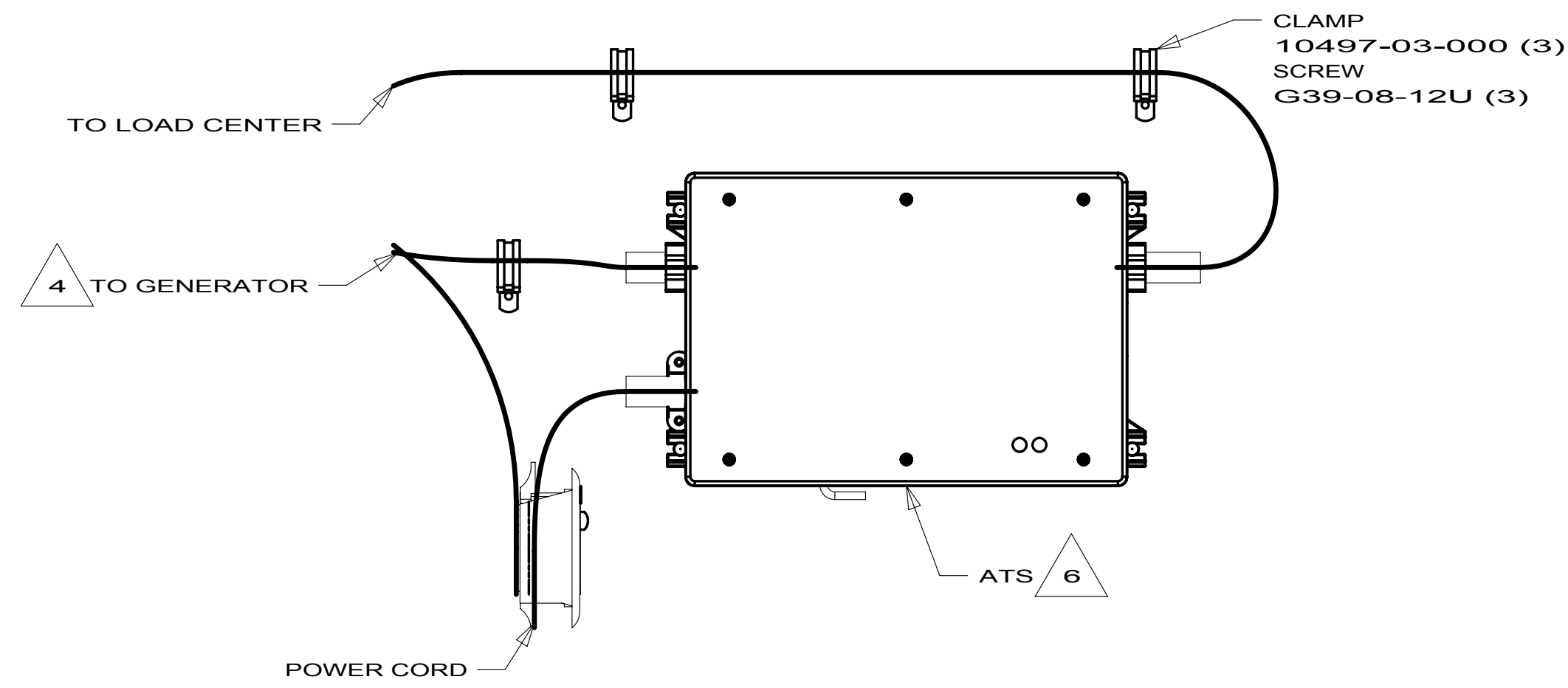
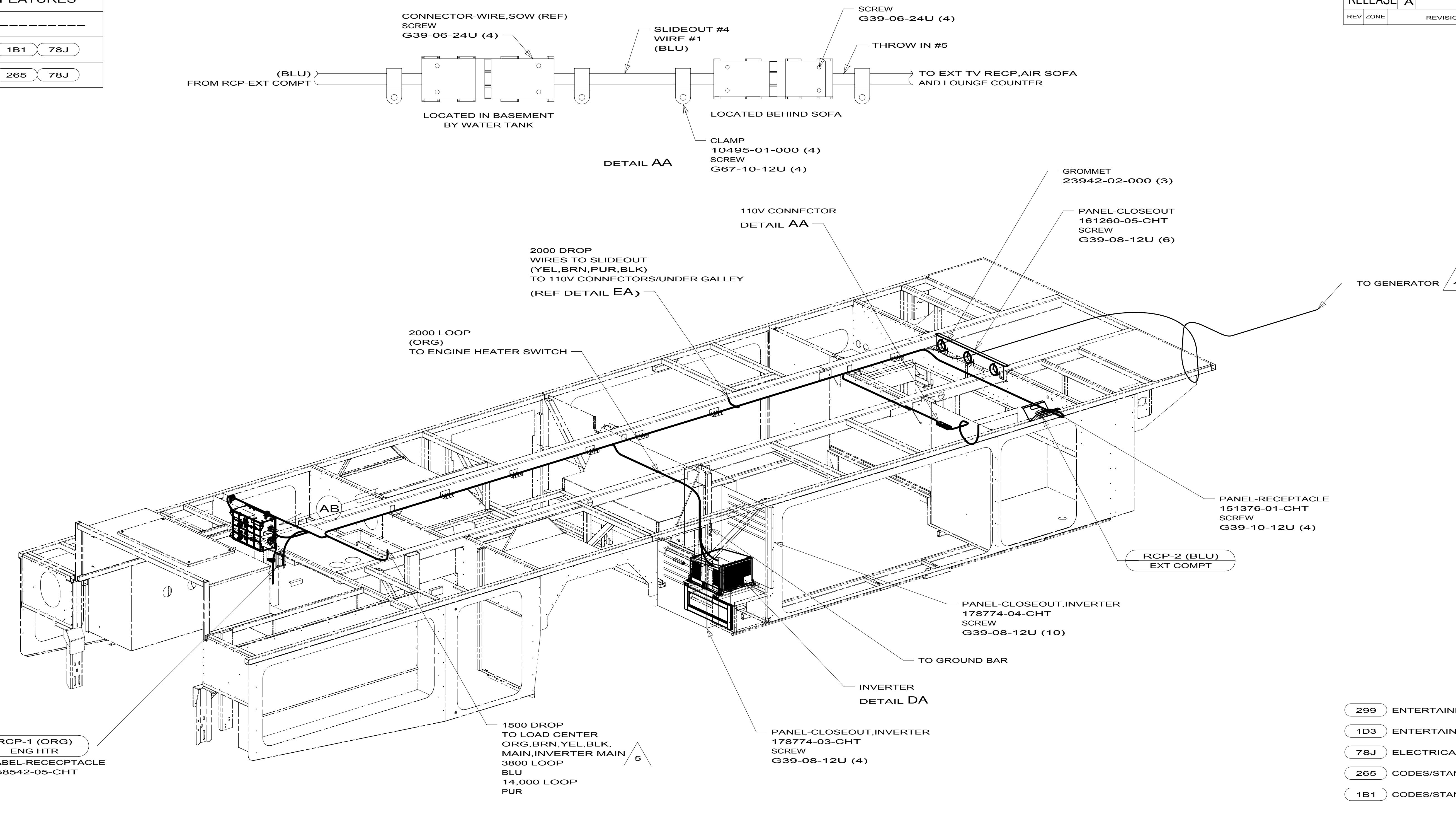


CAUTION

If you lack the skills, tools or equipment to perform diagnostic or repair work leave such work to an authorized Winnebago Industries dealer or other qualified shop.

| DRAWING NO. | FEATURES |
|-------------|----------|
| 182048-01 | ----- |
| 182048-12 | 1B1 78J |
| 182048-16 | 265 78J |

| | | | |
|----------|-----------------|--------|----------|
| RELEASE | REV DATE | DWG NO | 182048 |
| REV ZONE | REVISION RECORD | DATE | DFT-ORIG |



- 299 ENTERTAINMENT CENTER EXT.W/O
- 1D3 ENTERTAIN CENTR/EXT TV-DVD
- 78J ELECTRICAL SYSTEM-50 AMP
- 265 CODES/STANDARDS-CSA/CMVSS
- 1B1 CODES/STANDARDS USA

WINNEBAGO INDUSTRIES

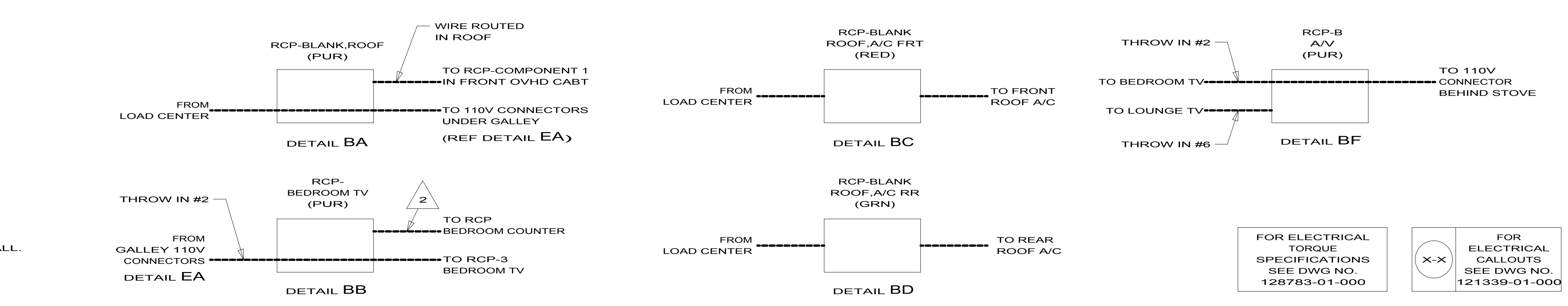
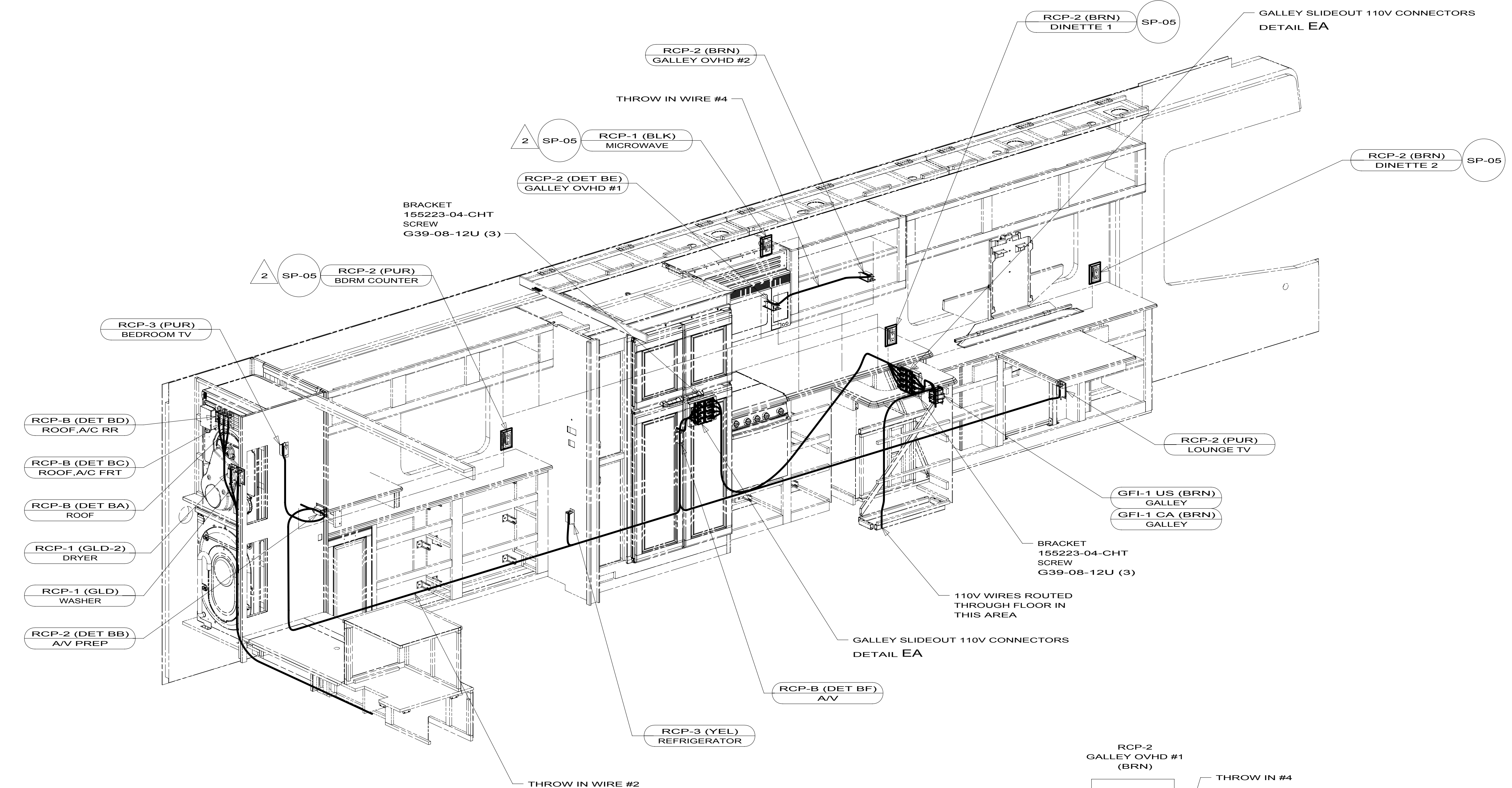
COPYRIGHT 2011 WINNEBAGO INDUSTRIES, INC.

| | |
|---------------------------------------|--|
| DFT-ORIG | ORIG. DATE |
| CHKR | ALL DIMENSIONS ARE IN MILLIMETERS |
| P.E. | FIRST USED |
| M.E. | 13 P34B |
| DSNR | MATERIAL: |
| UNSPECIFIED TOLERANCES ARE: | |
| WHOLE DIM (X) | : 3 |
| ONE-PLACE (X.X) | : 1.5 |
| TWO-PLACE (X.XX) | : 0.50 |
| ANGLE | : 1° |
| THIRD ANGLE PROJECTION | |
| DO NOT SCALE DRAWING | REFER TO ES0018 FOR FASTENER TIGHTENING GUIDELINES |
| TITLE: WIRING INSTL-BODY, 110V | |
| SHEET 1 OF 5 | PART NO 182048 REV |

- 6 SEE LOAD CENTER/ATS ASM FOR ADDITIONAL INFORMATION.
- 5 TO ABOVE FLOOR.
- 4 SEE GENERATOR INSTL FOR ADDITIONAL INFORMATION.
3. WIRES THAT REST ON WIRE TRAYS ARE TO BE TIED DOWN WITH WIRE TIE 8343-04-000.
 2. CLAMP TO FLOOR SUPPORT TUBES AS NECESSARY WITH CLAMP 10497-01-000.
 1. ALL WIRES TO BE SECURED WITH CLAMP 10495 OR 10497 OR WIRE TIE 8343 OR 108046 EVERY 600 MM. USE SCREW G67-XX-XXX OR G56-XX-XXX AS APPROPRIATE FOR INSTALLATION.

FOR ELECTRICAL TORQUE SPECIFICATIONS SEE DWG NO. 128783-01-000

FOR ELECTRICAL CALLOUTS SEE DWG NO. 121339-01-000



- 48D BED-QUEEN, AIR SLEEP SYSTEM
- 48A BED-QUEEN, INNERSPRING
- 21P DINING TABLE/BUFFET/CHAIRS
- 146 DINETTE-SECTIONAL/EXTEND TBL
- 265 CODES/STANDARDS-CSA/CMVSS
- 1B1 CODES/STANDARDS USA

NOTES:
 2 WIRE IN SIDEWALL.
 1 WITHOUT 48D

FOR ELECTRICAL TORQUE SPECIFICATIONS SEE DWG NO. 128783-01-000

FOR ELECTRICAL CALLOUTS SEE DWG NO. 121339-01-000

FIRST USED

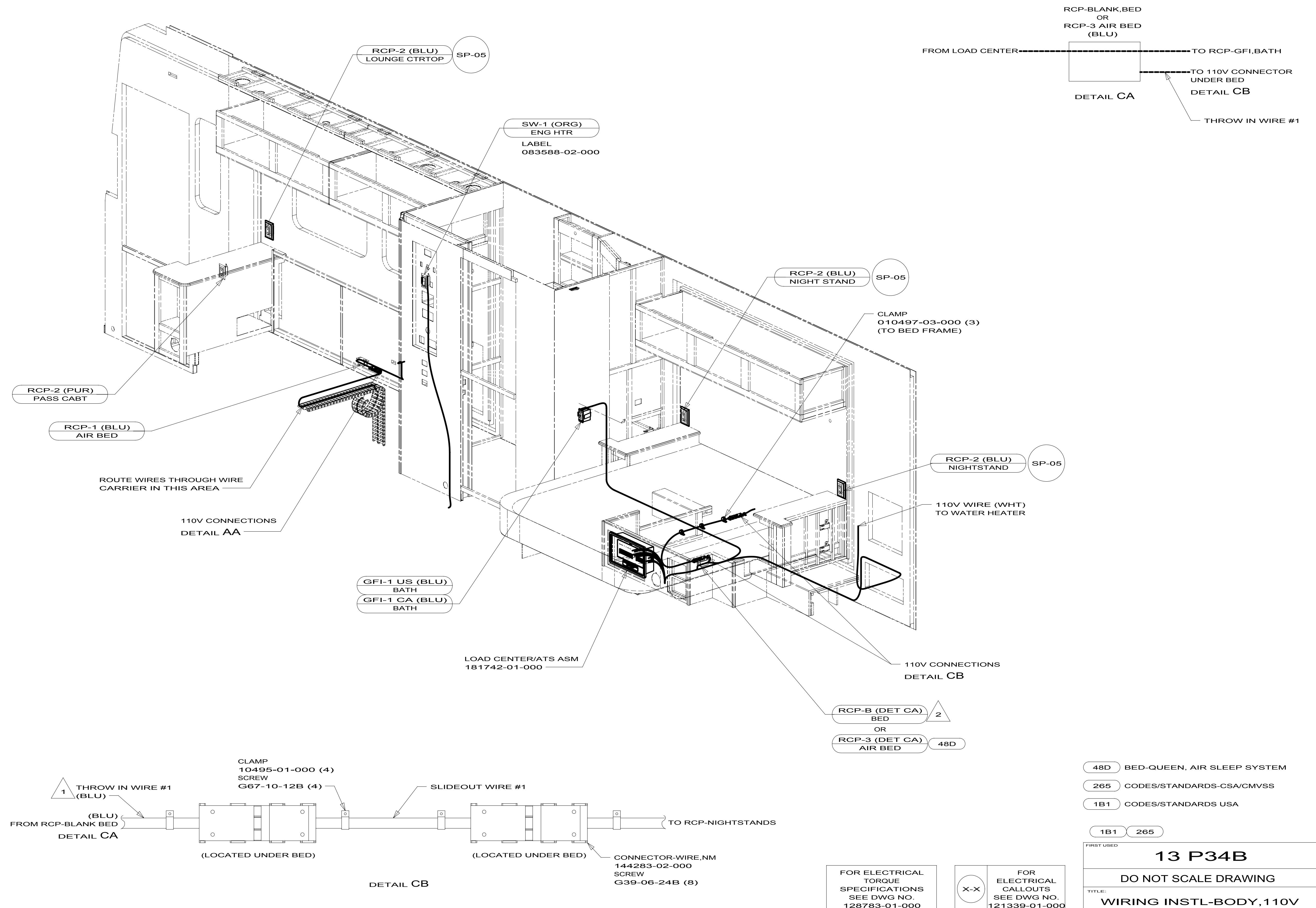
13 P34B

DO NOT SCALE DRAWING

TITLE: **WIRING INSTL-BODY, 110V**

SHEET 2 PART NO. **182048** REV

3/22/2012



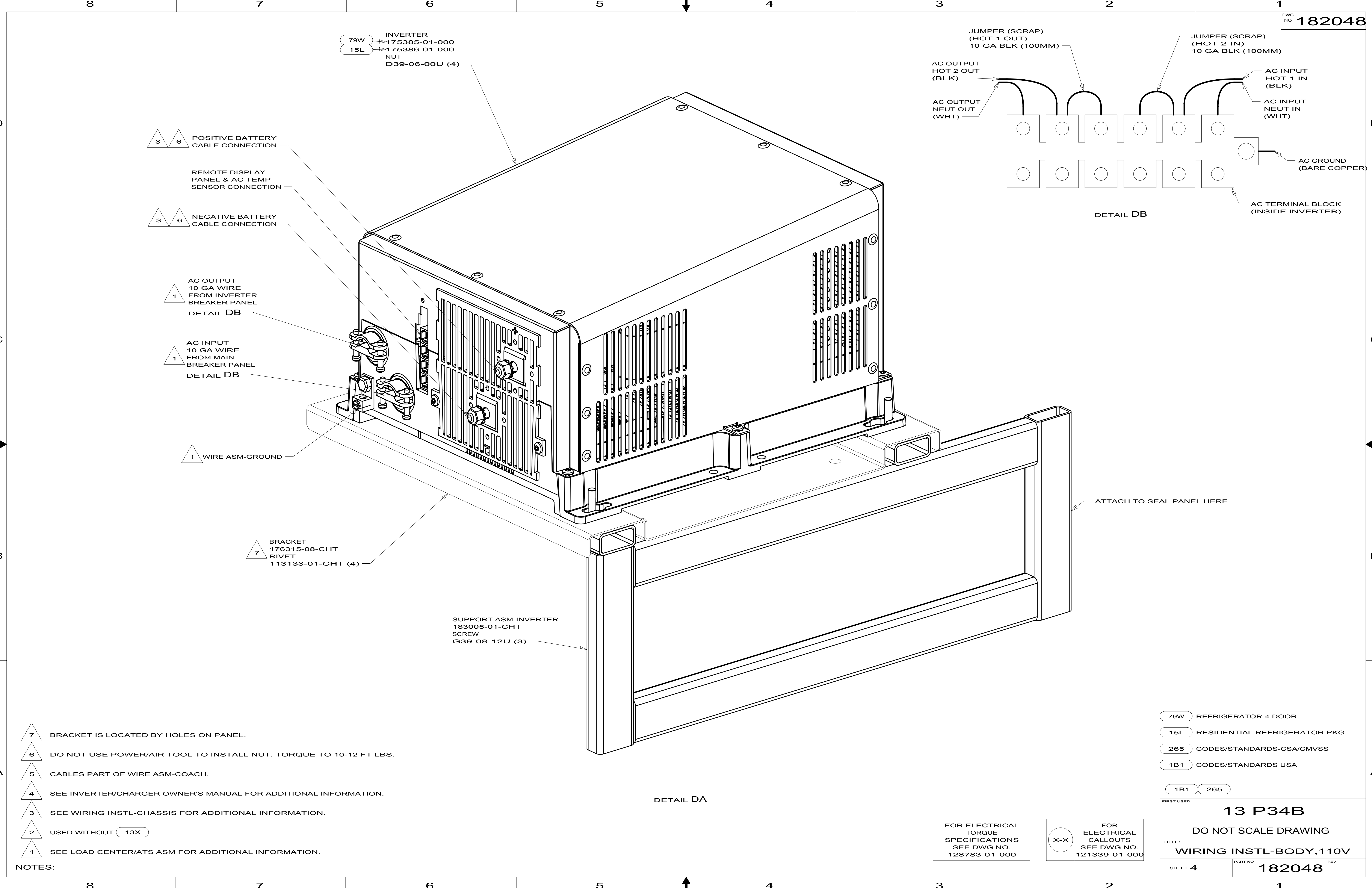
- NOTES:
- 2 WITHOUT 48D
 - 1 WIRE IN SIDEWALL.

- 48D BED-QUEEN, AIR SLEEP SYSTEM
- 265 CODES/STANDARDS-CSA/CMVSS
- 1B1 CODES/STANDARDS USA

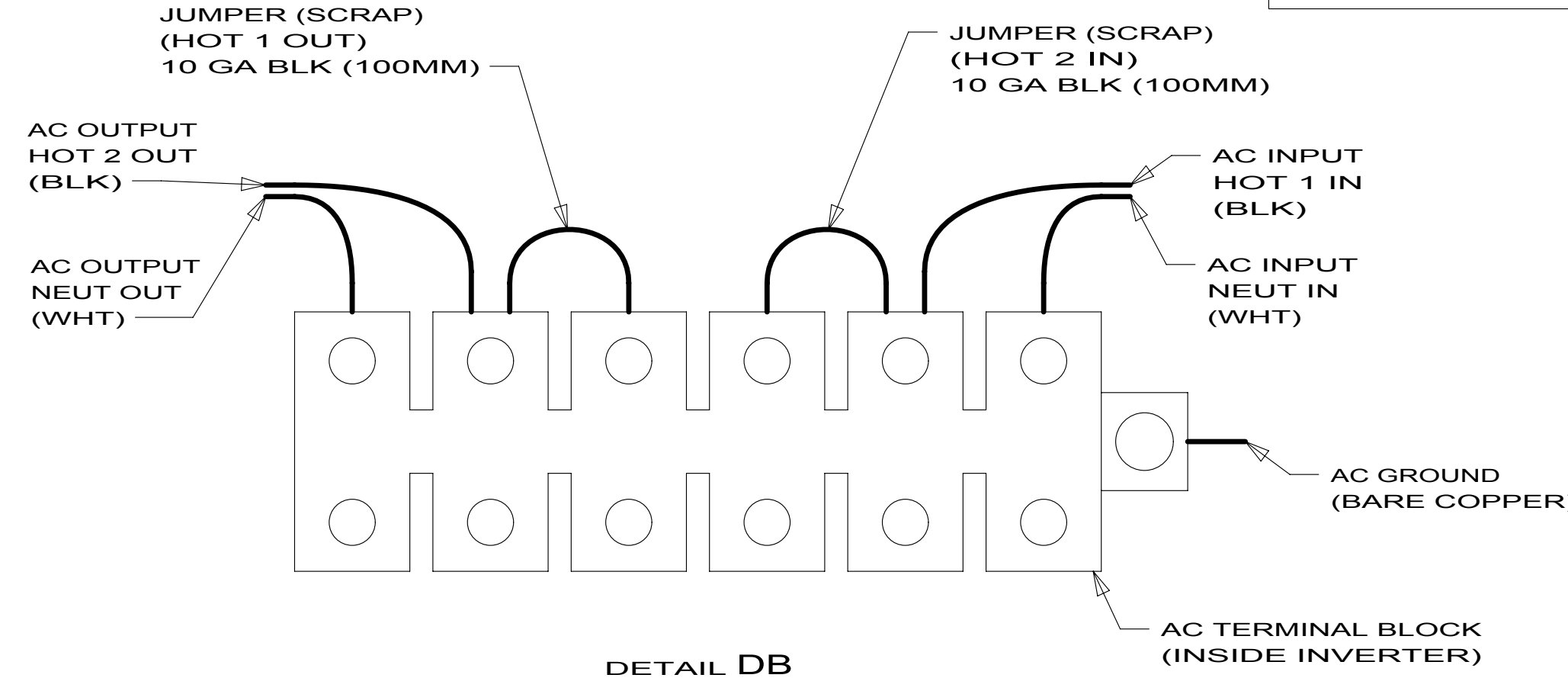
| | |
|---------------------------------------|---------------------------|
| FIRST USED | |
| 13 P34B | |
| DO NOT SCALE DRAWING | |
| TITLE: WIRING INSTL-BODY, 110V | |
| SHEET 3 | PART NO 182048 REV |

FOR ELECTRICAL TORQUE SPECIFICATIONS SEE DWG NO. 128783-01-000

FOR ELECTRICAL CALLOUTS SEE DWG NO. 121339-01-000



INVERTER
 79W → 175385-01-000
 15L → 175386-01-000
 NUT
 D39-06-00U (4)



3 6 POSITIVE BATTERY
 CABLE CONNECTION

REMOTE DISPLAY
 PANEL & AC TEMP
 SENSOR CONNECTION

3 6 NEGATIVE BATTERY
 CABLE CONNECTION

1 AC OUTPUT
 10 GA WIRE
 FROM INVERTER
 BREAKER PANEL
 DETAIL DB

1 AC INPUT
 10 GA WIRE
 FROM MAIN
 BREAKER PANEL
 DETAIL DB

1 WIRE ASM-GROUND

7 BRACKET
 176315-08-CHT
 RIVET
 113133-01-CHT (4)

SUPPORT ASM-INVERTER
 183005-01-CHT
 SCREW
 G39-08-12U (3)

ATTACH TO SEAL PANEL HERE

DETAIL DA

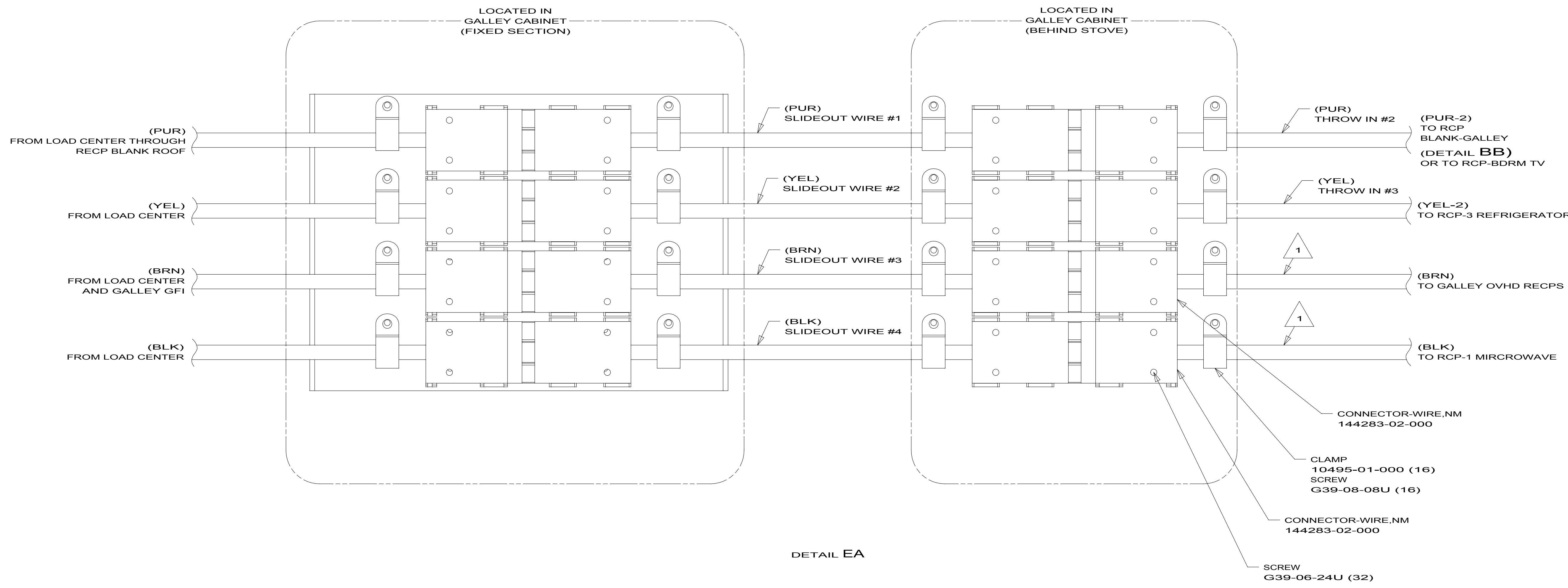
- NOTES:
- 7 BRACKET IS LOCATED BY HOLES ON PANEL.
 - 6 DO NOT USE POWER/AIR TOOL TO INSTALL NUT. TORQUE TO 10-12 FT LBS.
 - 5 CABLES PART OF WIRE ASM-COACH.
 - 4 SEE INVERTER/CHARGER OWNER'S MANUAL FOR ADDITIONAL INFORMATION.
 - 3 SEE WIRING INSTL-CHASSIS FOR ADDITIONAL INFORMATION.
 - 2 USED WITHOUT 13X
 - 1 SEE LOAD CENTER/ATS ASM FOR ADDITIONAL INFORMATION.

- 79W REFRIGERATOR-4 DOOR
- 15L RESIDENTIAL REFRIGERATOR PKG
- 265 CODES/STANDARDS-CSA/CMVSS
- 1B1 CODES/STANDARDS USA

| | | | |
|---------------------------------------|---------|----------------|-----|
| FIRST USED | | 13 P34B | |
| DO NOT SCALE DRAWING | | | |
| TITLE: WIRING INSTL-BODY, 110V | | | |
| SHEET 4 | PART NO | 182048 | REV |

FOR ELECTRICAL
 TORQUE
 SPECIFICATIONS
 SEE DWG NO.
 128783-01-000

FOR ELECTRICAL
 CALLOUTS
 SEE DWG NO.
 121339-01-000



DETAIL EA

NOTES:

1 WIRE ROUTED IN SIDEWALL.

FOR ELECTRICAL TORQUE SPECIFICATIONS SEE DWG NO. 128783-01-000

FOR ELECTRICAL CALLOUTS SEE DWG NO. 121339-01-000

- 78J ELECTRICAL SYSTEM-50 AMP
- 265 CODES/STANDARDS-CSA/CMVSS
- 1B1 CODES/STANDARDS USA

1B1 265 78J

| | | |
|---------------------------------------|-----------------------|-----|
| FIRST USED | | |
| 13 P34B | | |
| DO NOT SCALE DRAWING | | |
| TITLE: WIRING INSTL-BODY, 110V | | |
| SHEET 5 | PART NO 182048 | REV |