



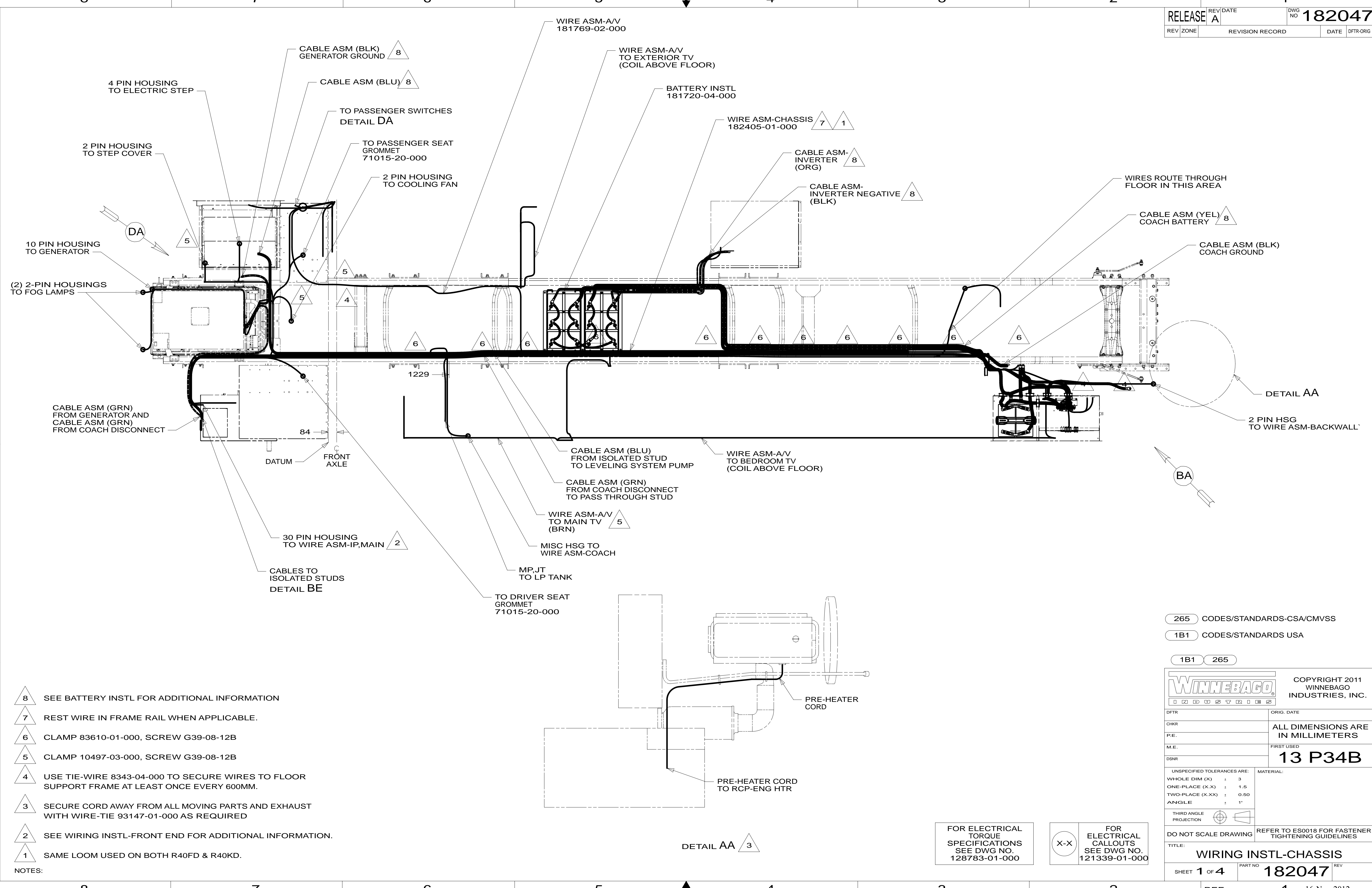
**DANGER**

**Danger of electrical shock, burns or death.** Always remove all power sources before attempting any repair, service or diagnostic work. Power can be present from shore power, generator, inverter or battery. All power sources must be disabled and secured before performing any service.



**CAUTION**

If you lack the skills, tools or equipment to perform diagnostic or repair work leave such work to an authorized Winnebago Industries dealer or other qualified shop.



- NOTES:
- 8 SEE BATTERY INSTL FOR ADDITIONAL INFORMATION
  - 7 REST WIRE IN FRAME RAIL WHEN APPLICABLE.
  - 6 CLAMP 83610-01-000, SCREW G39-08-12B
  - 5 CLAMP 10497-03-000, SCREW G39-08-12B
  - 4 USE TIE-WIRE 8343-04-000 TO SECURE WIRES TO FLOOR SUPPORT FRAME AT LEAST ONCE EVERY 600MM.
  - 3 SECURE CORD AWAY FROM ALL MOVING PARTS AND EXHAUST WITH WIRE-TIE 93147-01-000 AS REQUIRED
  - 2 SEE WIRING INSTL-FRONT END FOR ADDITIONAL INFORMATION.
  - 1 SAME LOOM USED ON BOTH R40FD & R40KD.

265 CODES/STANDARDS-CSA/CMVSS  
 1B1 CODES/STANDARDS USA  
 1B1 265

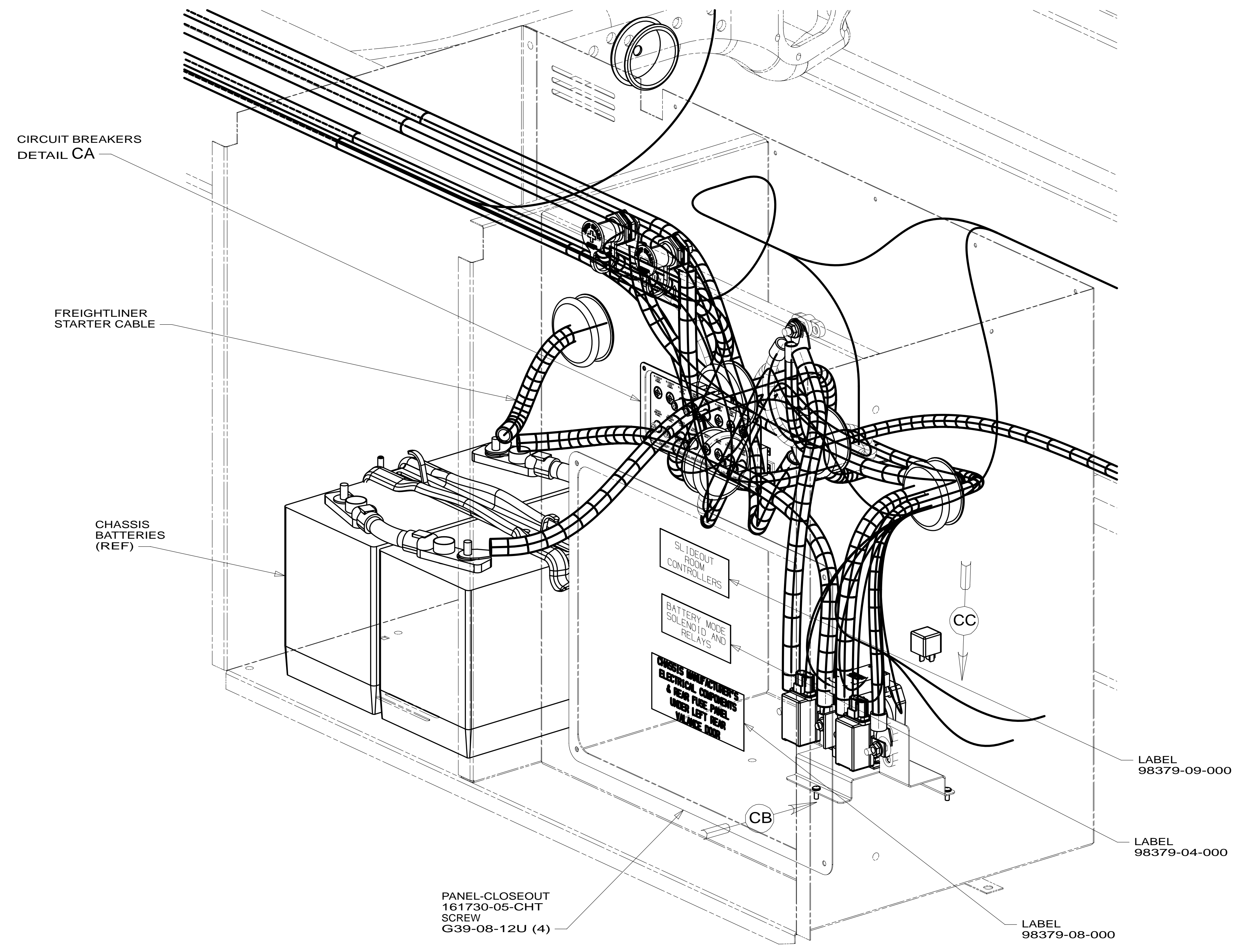
**WINNEBAGO** INDUSTRIES, INC. COPYRIGHT 2011

DFTR	ORIG. DATE
CHKR	ALL DIMENSIONS ARE IN MILLIMETERS
P.E.	FIRST USED
M.E.	<b>13 P34B</b>
DSNR	MATERIAL:
UNSPECIFIED TOLERANCES ARE:	
WHOLE DIM (X)	: 3
ONE-PLACE (X.X)	: 1.5
TWO-PLACE (X.XX)	: 0.50
ANGLE	: 1°
THIRD ANGLE PROJECTION	
DO NOT SCALE DRAWING	REFER TO ES0018 FOR FASTENER TIGHTENING GUIDELINES
TITLE: <b>WIRING INSTL-CHASSIS</b>	
SHEET 1 OF 4	PART NO <b>182047</b> REV
REF:	1 16-Nov-2012

FOR ELECTRICAL TORQUE SPECIFICATIONS SEE DWG NO. 128783-01-000

X-X FOR ELECTRICAL CALLOUTS SEE DWG NO. 121339-01-000

DETAIL AA 3



VIEW BA

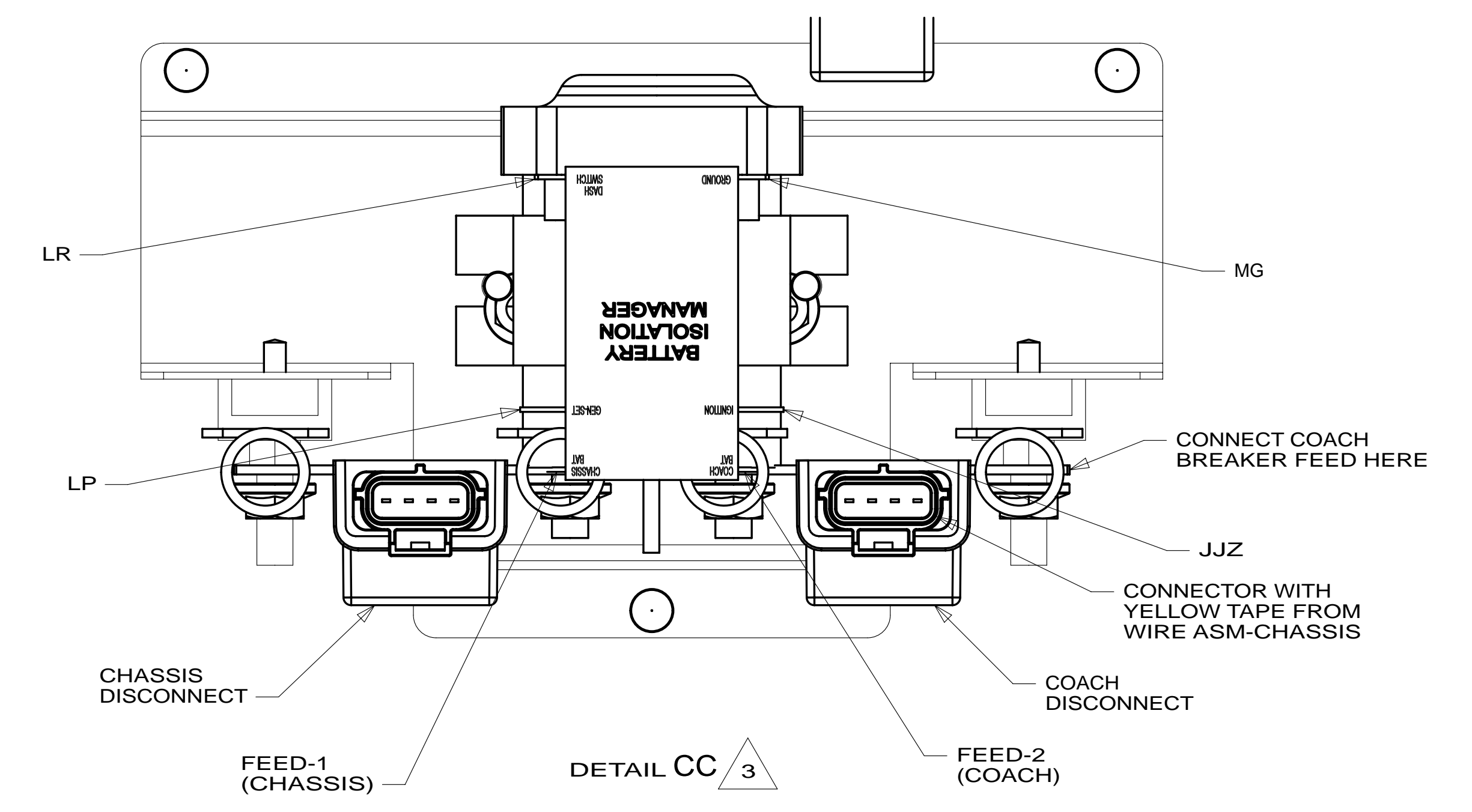
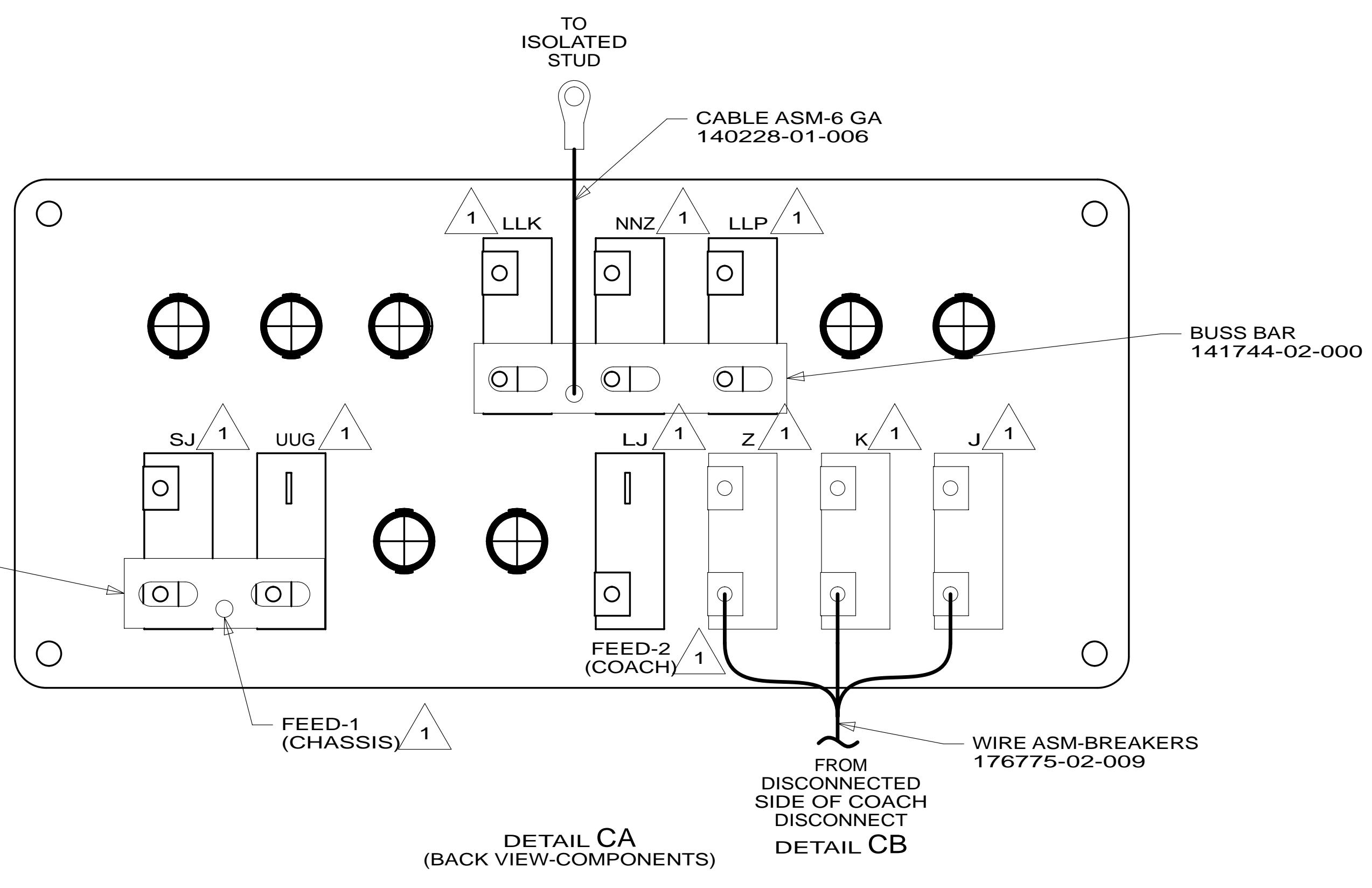
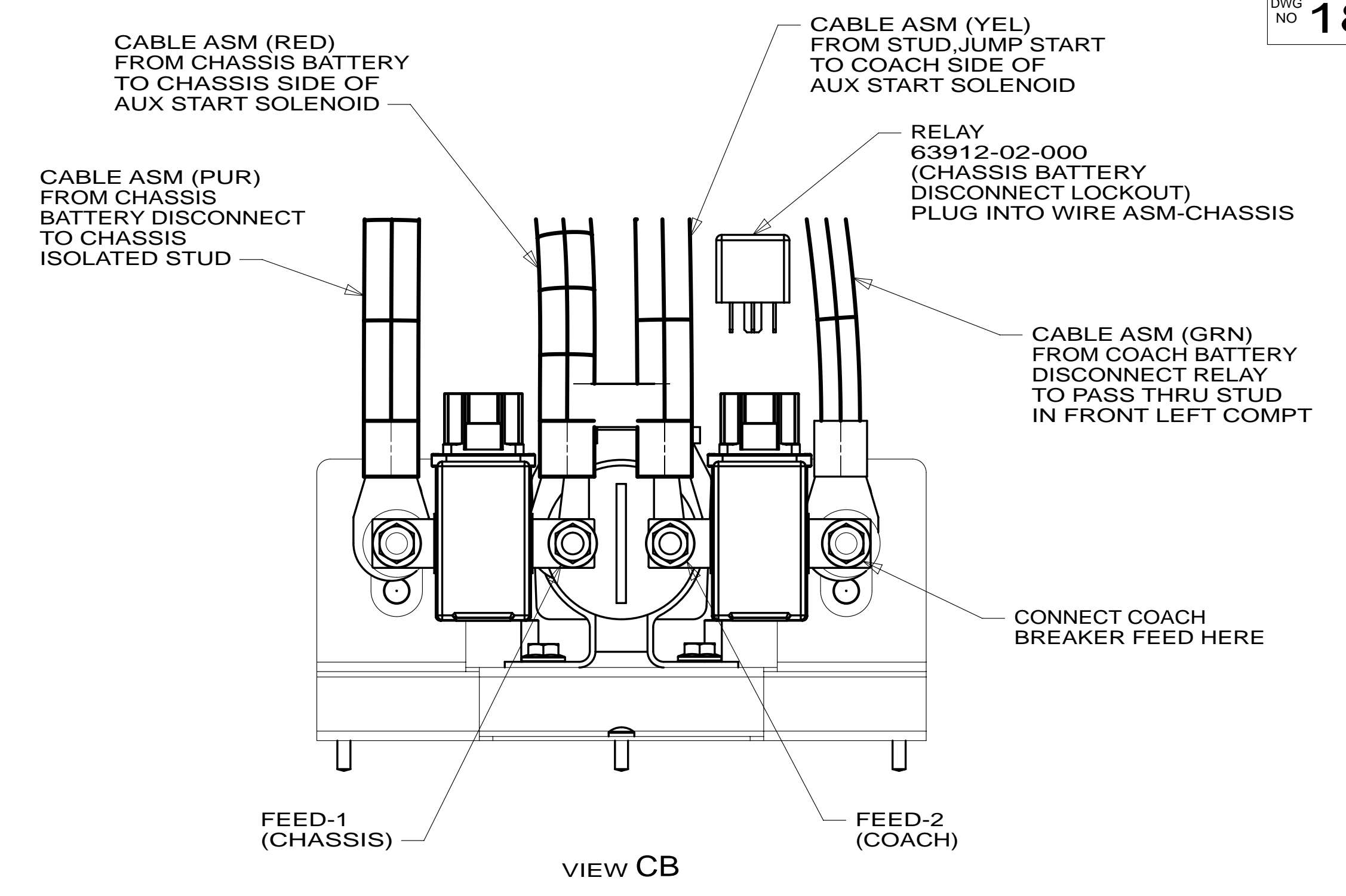
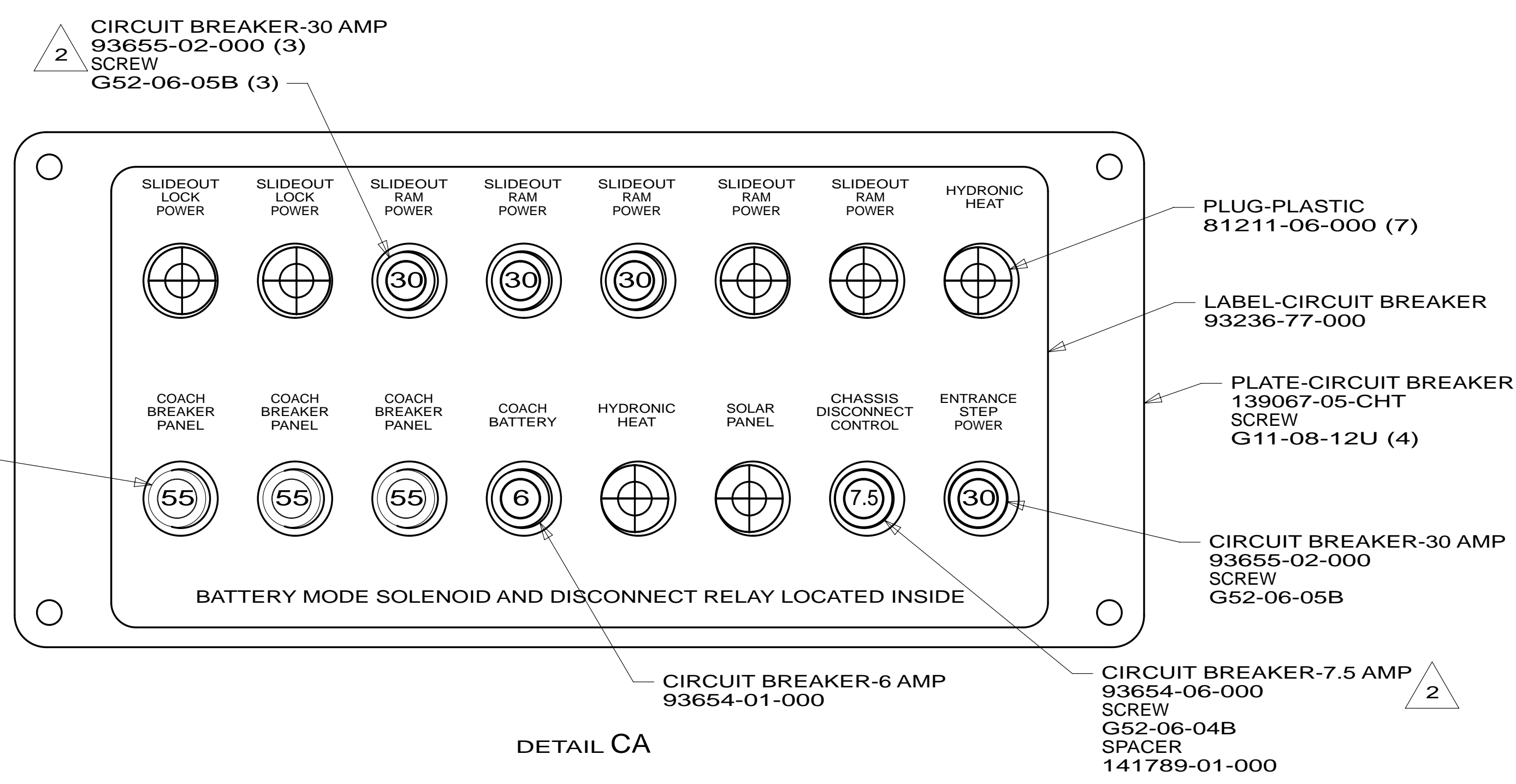
- 265 CODES/STANDARDS-CSA/CMVSS
- 1B1 CODES/STANDARDS USA

1B1 265

FIRST USED	<b>13 P34B</b>	
<b>DO NOT SCALE DRAWING</b>		
<b>TITLE: WIRING INSTL-CHASSIS</b>		
SHEET 2	PART NO <b>182047</b>	REV

FOR ELECTRICAL  
TORQUE  
SPECIFICATIONS  
SEE DWG NO.  
128783-01-000

X-X  
FOR  
ELECTRICAL  
CALLOUTS  
SEE DWG NO.  
121339-01-000



- NOTES:**
- 3 SEE BATTERY INSTL FOR ADDITIONAL INFORMATION.
  - 2 REPLACE EXISTING SCREW TO PROPERLY ATTACH BREAKER TO BUSS BAR.
  - 1 CIRCUITS BRANCH FROM WIRE ASM-CHASSIS.

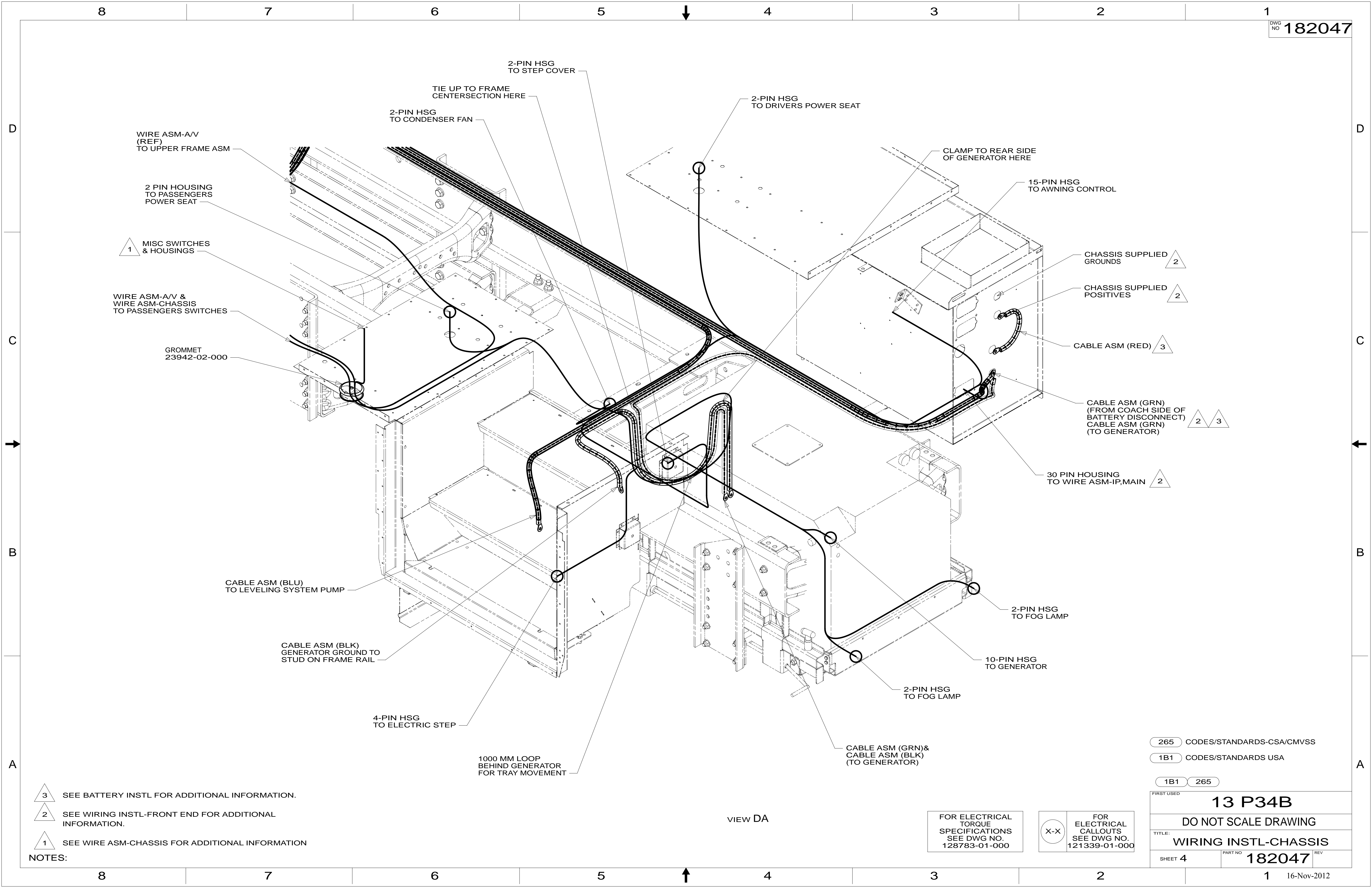
FOR ELECTRICAL TORQUE SPECIFICATIONS SEE DWG NO. 128783-01-000

FOR ELECTRICAL CALLOUTS SEE DWG NO. 121339-01-000

265	CODES/STANDARDS-CSA/CMVSS
1B1	CODES/STANDARDS USA
1B1	265

FIRST USED	<b>13 P34B</b>	
TITLE:	<b>DO NOT SCALE DRAWING</b>	
	<b>WIRING INSTL-CHASSIS</b>	
SHEET 3	PART NO <b>182047</b>	REV





- NOTES:
- 3 SEE BATTERY INSTL FOR ADDITIONAL INFORMATION.
  - 2 SEE WIRING INSTL-FRONT END FOR ADDITIONAL INFORMATION.
  - 1 SEE WIRE ASM-CHASSIS FOR ADDITIONAL INFORMATION

VIEW DA

FOR ELECTRICAL TORQUE SPECIFICATIONS SEE DWG NO. 128783-01-000

FOR ELECTRICAL CALLOUTS SEE DWG NO. 121339-01-000

265	CODES/STANDARDS-CSA/CMVSS
1B1	CODES/STANDARDS USA
1B1	265
FIRST USED	
<b>13 P34B</b>	
<b>DO NOT SCALE DRAWING</b>	
TITLE: <b>WIRING INSTL-CHASSIS</b>	
SHEET 4	PART NO <b>182047</b> REV
16-Nov-2012	