



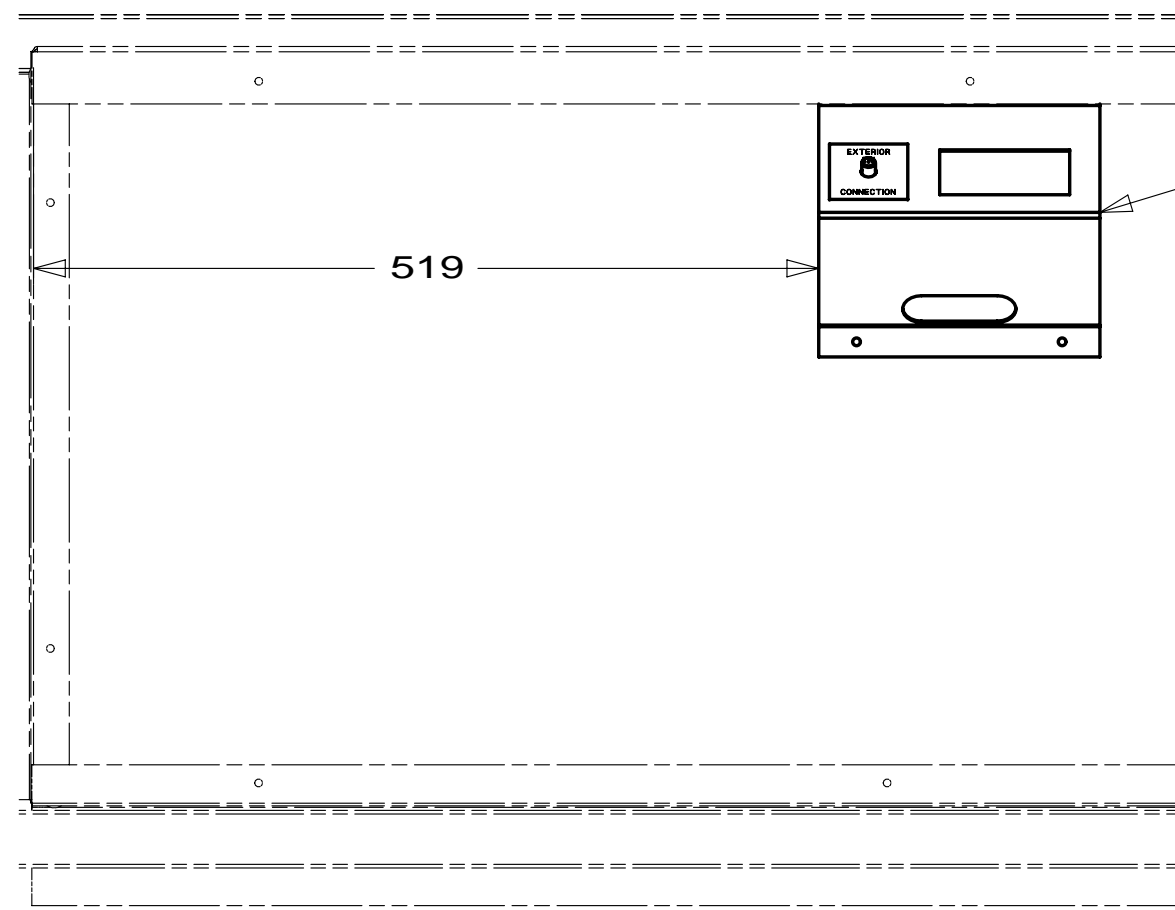
DANGER

Danger of electrical shock, burns or death. Always remove all power sources before attempting any repair, service or diagnostic work. Power can be present from shore power, generator, inverter or battery. All power sources must be disabled and secured before performing any service.



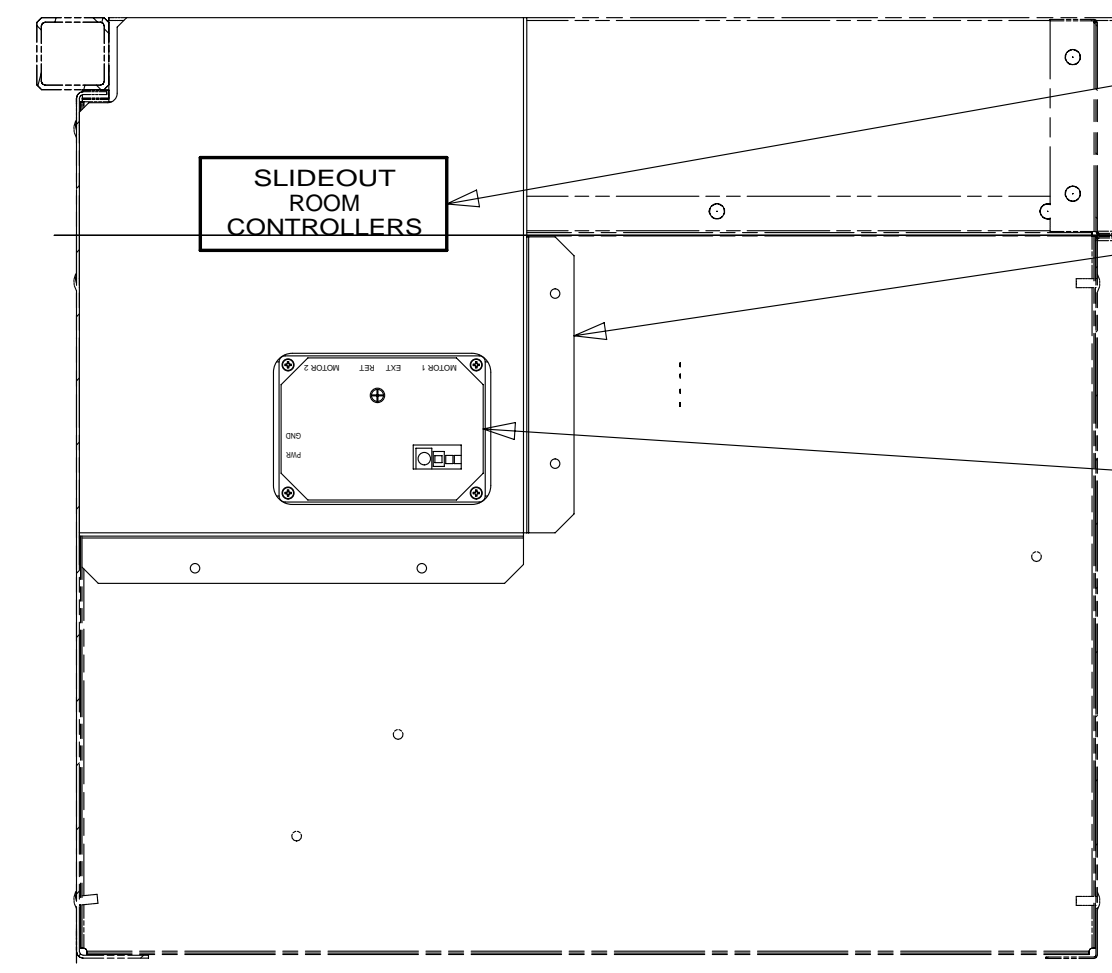
CAUTION

If you lack the skills, tools or equipment to perform diagnostic or repair work leave such work to an authorized Winnebago Industries dealer or other qualified shop.



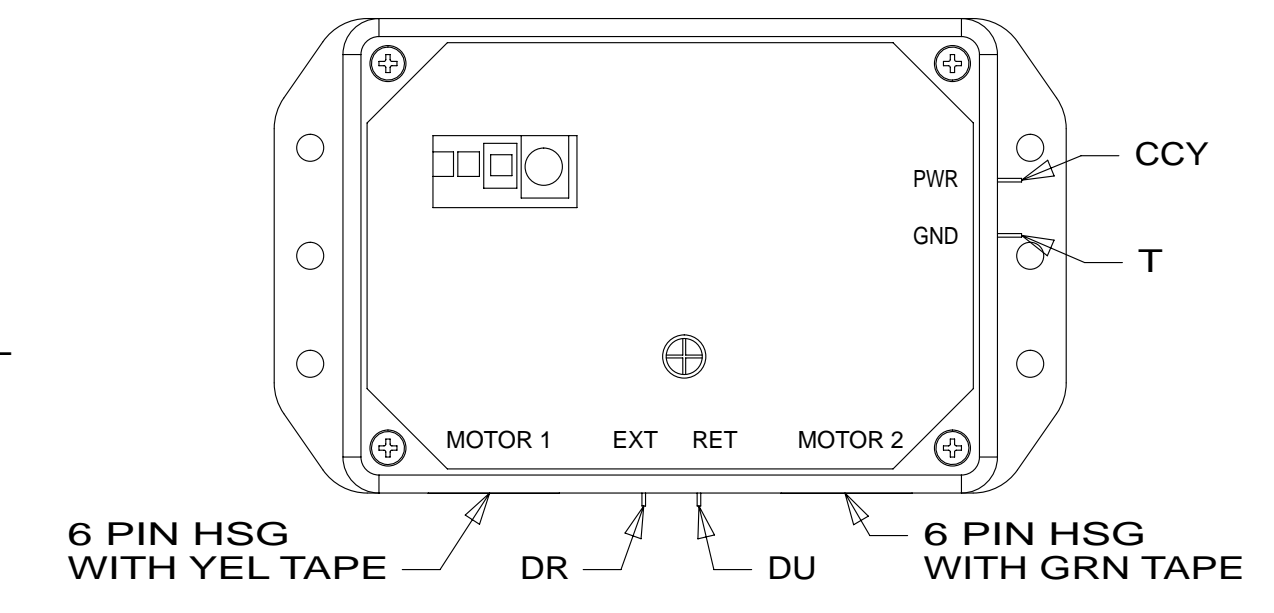
VIEW AA

- PANEL-RCP
151376-02-CHT
ADAPTER
082134-01-000
NUT
82136-01-000
LABEL
157486-01-CHT
SCREW
G67-10-12U (4)

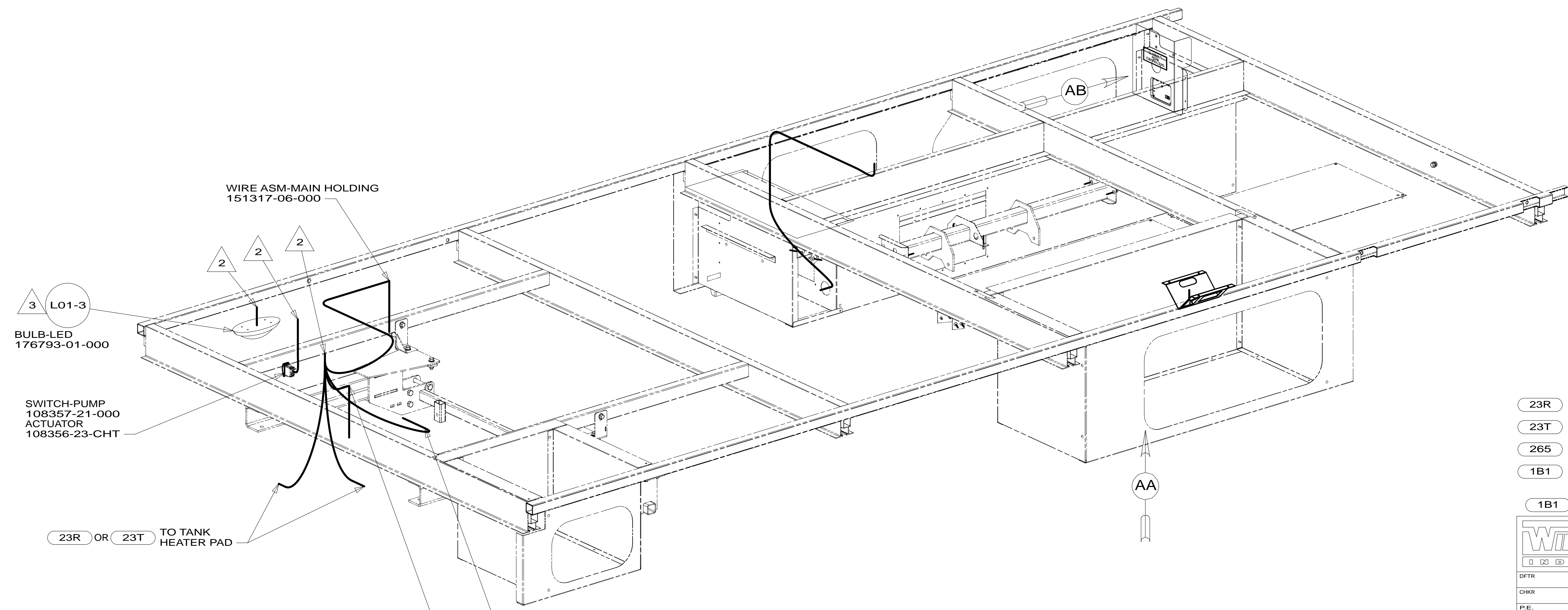


VIEW AB

- LABEL
98379-09-000
- BRACKET,COVER-CONTROL MODULE
180171-02-CHT
SCREW
G39-10-12U (4)
- CONTROL-SLIDEOUT,IN-WALL
178451-01-000
SCREW
G39-08-12U (4)
DETAIL AC



VIEW AC



- WIRE ASM-MAIN HOLDING
151317-06-000
- BULB-LED
176793-01-000
- SWITCH-PUMP
108357-21-000
ACTUATOR
108356-23-CHT

23R OR 23T TO TANK HEATER PAD

TO TANK HEATER PAD 23R OR 23T

WIRE ASM-AUX HOLDING
151316-02-000

- 3 REMOVE BULB SUPPLIED WITH LAMP, SEND BULB TO STOCK AS PART NUMBER 117805-02-000, REPLACE WITH LED BULB
- 2 WIRE ROUTED THROUGH FLOOR IN THIS AREA.
- 1. ROUTE TANK SENSOR WIRES SO THEY DO NOT PASS OVER SENSORS. USE WIRE TIE MOUNT 155366-01-000 AS NEEDED. TANK SURFACE MUST BE CLEANED USING ISOPROPYL ALCOHOL AND PRIME WITH PRIMER 94.

NOTES:

- 23R DRAINAGE SYSTEM/HEAT-PREWIRE
- 23T DRAINAGE SYSTEM-HEATED
- 265 CODES/STANDARDS-CSA/CMVSS
- 1B1 CODES/STANDARDS USA

1B1 265

WINNEBAGO COPYRIGHT 2011
WINNEBAGO INDUSTRIES, INC.

DTR	ORIG. DATE
CHKR	ALL DIMENSIONS ARE IN MILLIMETERS
P.E.	
M.E.	
DSNR	
13 524J	
UNSPECIFIED TOLERANCES ARE:	
WHOLE DIM (X)	: 3
ONE-PLACE (X.X)	: 1.5
TWO-PLACE (X.XX)	: 0.50
ANGLE	: 1°
THIRD ANGLE PROJECTION	

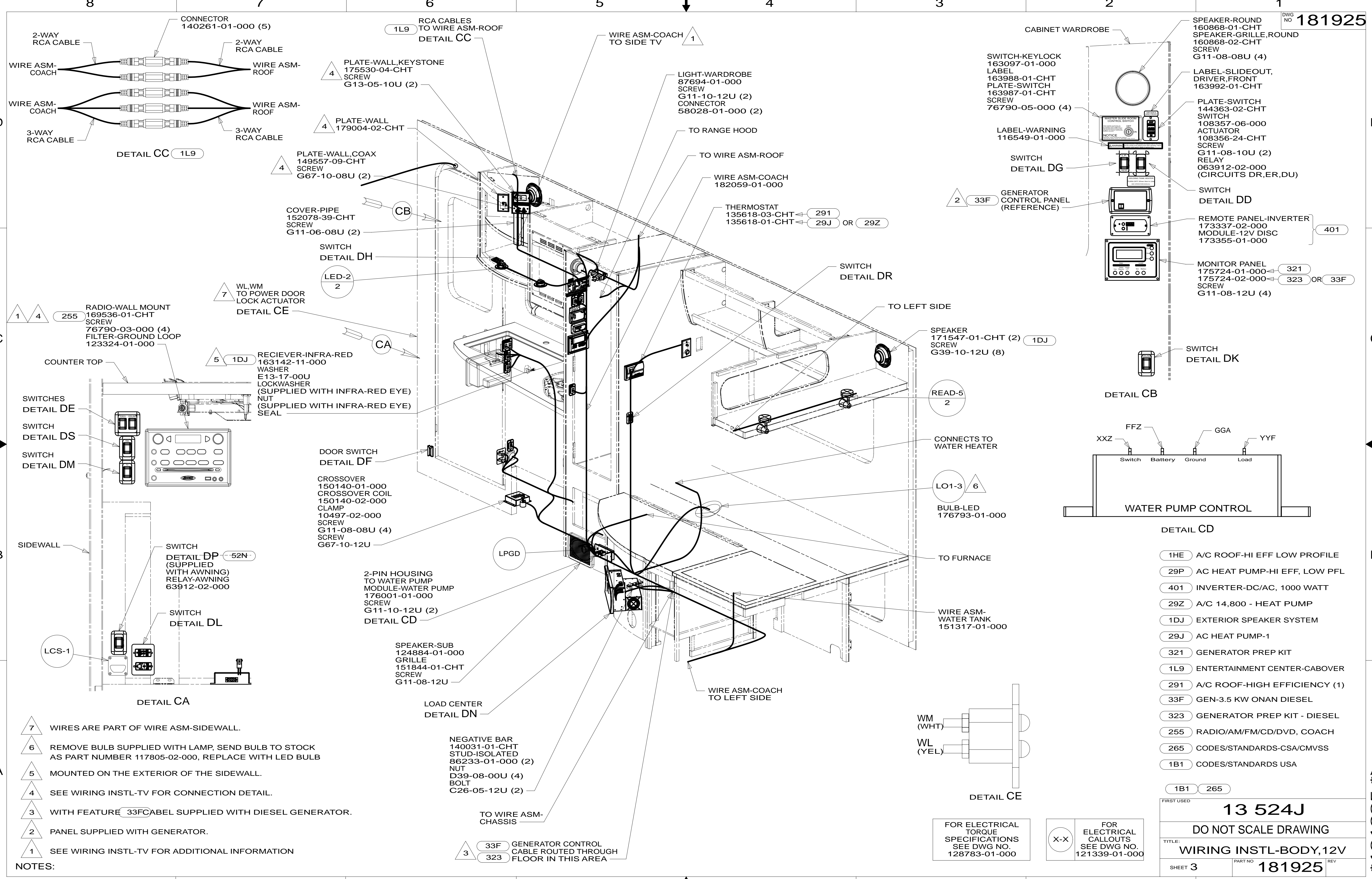
FOR ELECTRICAL TORQUE SPECIFICATIONS SEE DWG NO. 128783-01-000

FOR ELECTRICAL CALLOUTS SEE DWG NO. 121339-01-000

DO NOT SCALE DRAWING REFER TO ES0018 FOR FASTENER TIGHTENING GUIDELINES

TITLE: **WIRING INSTL-BODY,12V**
SHEET 1 OF 6 PART NO. **181925** REV

* 181925 *



8 2-WAY RCA CABLE
WIRE ASM-COACH
WIRE ASM-COACH
3-WAY RCA CABLE
CONNECTOR 140261-01-000 (5)
2-WAY RCA CABLE
WIRE ASM-ROOF
WIRE ASM-ROOF
3-WAY RCA CABLE
DETAIL CC 1L9

7 PLATE-WALL, KEYSTONE 175530-04-CHT SCREW G13-05-10U (2)
PLATE-WALL 179004-02-CHT
PLATE-WALL, COAX 149557-09-CHT SCREW G67-10-08U (2)
COVER-PIPE 152078-39-CHT SCREW G11-06-08U (2)
SWITCH DETAIL DH
WL, WM TO POWER DOOR LOCK ACTUATOR DETAIL CE
RADIO-WALL MOUNT 169536-01-CHT SCREW 76790-03-000 (4) FILTER-GROUND LOOP 123324-01-000
COUNTER TOP
SWITCHES DETAIL DE
SWITCH DETAIL DS
SWITCH DETAIL DM
SWITCH DETAIL DP (SUPPLIED WITH AWNING) RELAY-AWNING 63912-02-000
SWITCH DETAIL DL
LCS-1

6 RCA CABLES TO WIRE ASM-ROOF DETAIL CC
WIRE ASM-COACH TO SIDE TV
LIGHT-WARDROBE 87694-01-000 SCREW G11-10-12U (2) CONNECTOR 58028-01-000 (2)
TO RANGE HOOD
TO WIRE ASM-ROOF
WIRE ASM-COACH 182059-01-000
THERMOSTAT 135618-03-CHT 291 135618-01-CHT 29J OR 29Z
SWITCH DETAIL DR
TO LEFT SIDE
SPEAKER 171547-01-CHT (2) 1DJ SCREW G39-10-12U (8)
READ-5 2
CONNECTS TO WATER HEATER
LO1-3 6
BULB-LED 176793-01-000
TO FURNACE
WIRE ASM-WATER TANK 151317-01-000
WIRE ASM-COACH TO LEFT SIDE
WIRE ASM-COACH TO WIRE ASM-CHASSIS
NEGATIVE BAR 140031-01-CHT STUD-ISOLATED 86233-01-000 (2) NUT D39-08-00U (4) BOLT C26-05-12U (2)
TO WIRE ASM-CHASSIS

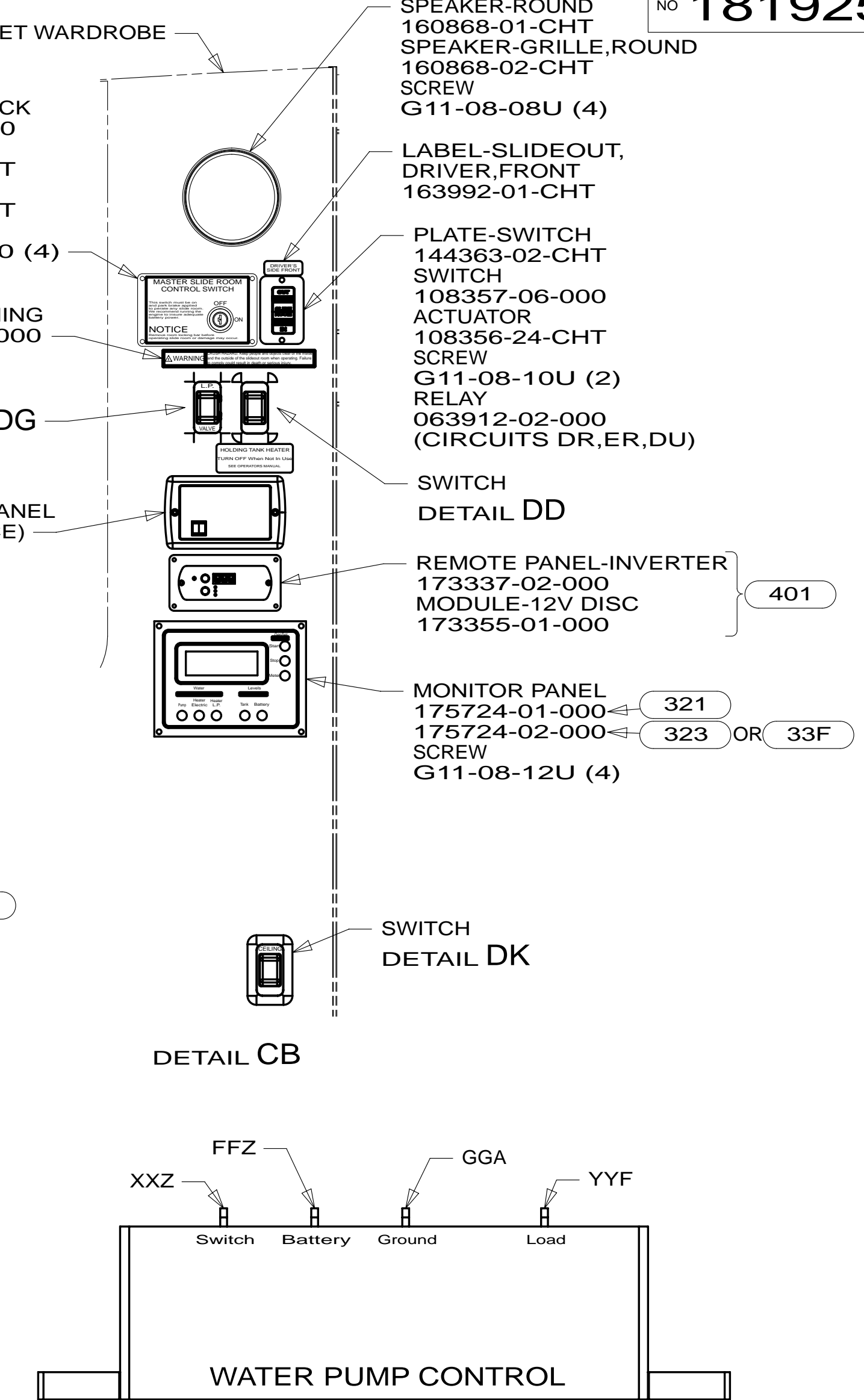
5 WIRE ASM-COACH TO SIDE TV
WIRE ASM-COACH TO WIRE ASM-ROOF
WIRE ASM-COACH TO WIRE ASM-CHASSIS

4 WIRE ASM-COACH TO WIRE ASM-ROOF
WIRE ASM-COACH TO WIRE ASM-CHASSIS

3 WIRE ASM-COACH TO WIRE ASM-CHASSIS

2 WIRE ASM-COACH TO WIRE ASM-CHASSIS

1 WIRE ASM-COACH TO WIRE ASM-CHASSIS



DETAIL CD

1HE	A/C ROOF-HI EFF LOW PROFILE
29P	AC HEAT PUMP-HI EFF, LOW PFL
401	INVERTER-DC/AC, 1000 WATT
29Z	A/C 14,800 - HEAT PUMP
1DJ	EXTERIOR SPEAKER SYSTEM
29J	AC HEAT PUMP-1
321	GENERATOR PREP KIT
1L9	ENTERTAINMENT CENTER-CABOVER
291	A/C ROOF-HIGH EFFICIENCY (1)
33F	GEN-3.5 KW ONAN DIESEL
323	GENERATOR PREP KIT - DIESEL
255	RADIO/AM/FM/CD/DVD, COACH
265	CODES/STANDARDS-CSA/CMVSS
1B1	CODES/STANDARDS USA

1B1 265

FIRST USED

13 524J

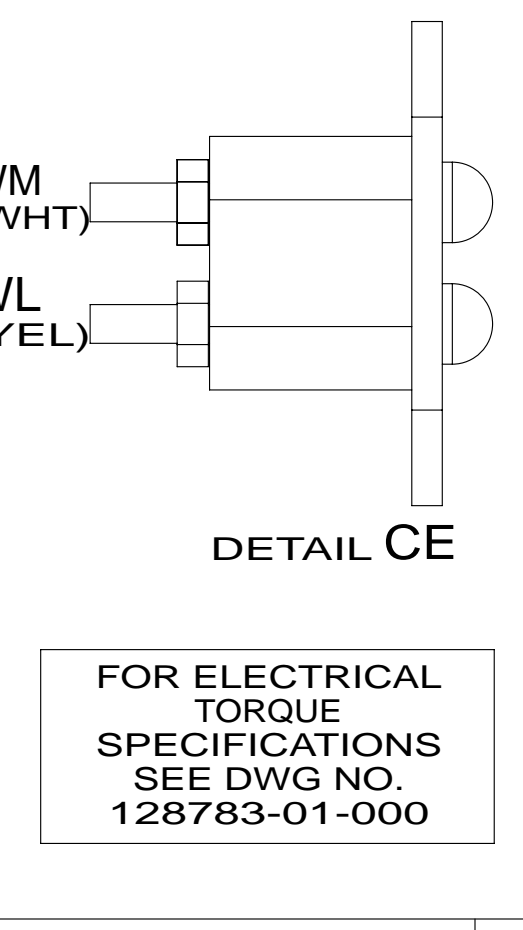
DO NOT SCALE DRAWING

TITLE: **WIRING INSTL-BODY, 12V**

SHEET 3 PART NO. **181925** REV

19-Nov-2012

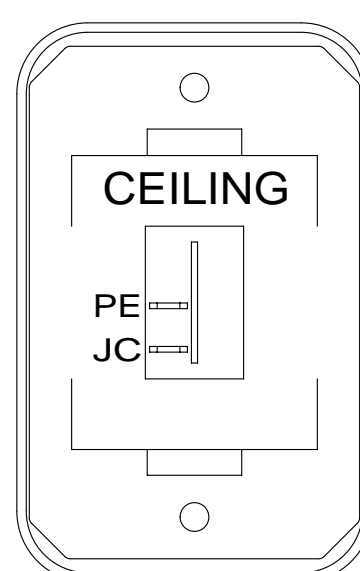
- NOTES:**
- 7 WIRES ARE PART OF WIRE ASM-SIDEWALL.
 - 6 REMOVE BULB SUPPLIED WITH LAMP, SEND BULB TO STOCK AS PART NUMBER 117805-02-000, REPLACE WITH LED BULB
 - 5 MOUNTED ON THE EXTERIOR OF THE SIDEWALL.
 - 4 SEE WIRING INSTL-TV FOR CONNECTION DETAIL.
 - 3 WITH FEATURE 33F LABEL SUPPLIED WITH DIESEL GENERATOR.
 - 2 PANEL SUPPLIED WITH GENERATOR.
 - 1 SEE WIRING INSTL-TV FOR ADDITIONAL INFORMATION



FOR ELECTRICAL TORQUE SPECIFICATIONS SEE DWG NO. 128783-01-000

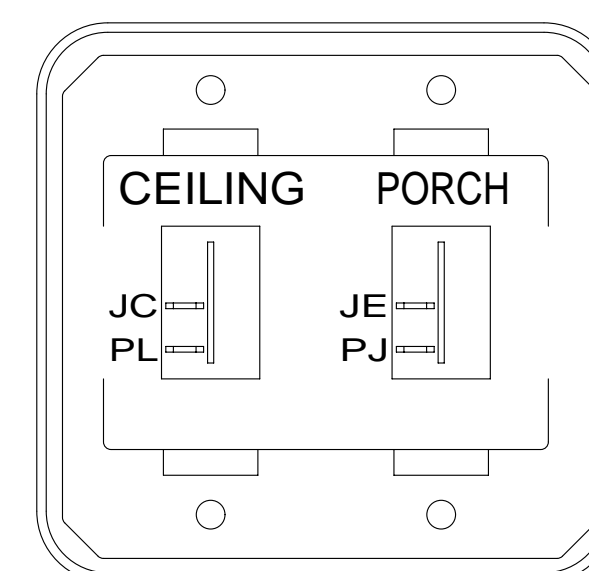
FOR ELECTRICAL CALLOUTS SEE DWG NO. 121339-01-000

* 181925



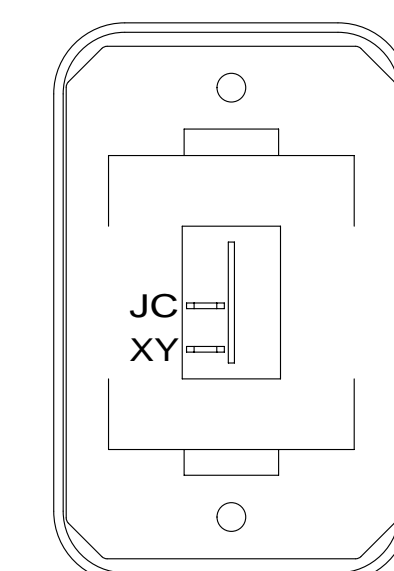
SWITCH-ROCKER
135740-01-CHT
SWITCH-BASE
135741-01-CHT
SWITCH-BEZEL
135742-07-CHT
SCREW
G11-08-08U (2)

DETAIL DA



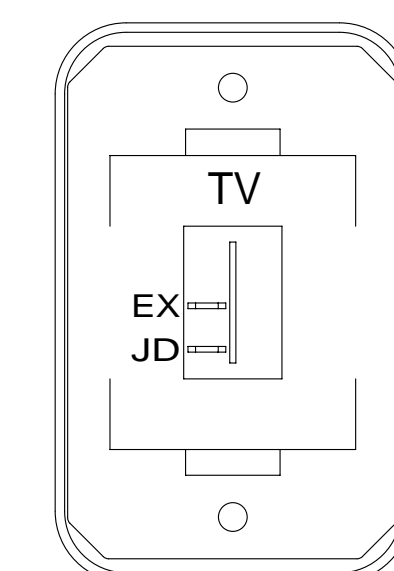
SWITCH-ROCKER
135740-01-CHT (2)
SWITCH-BASE
135741-02-CHT
SWITCH-BEZEL
135742-19-CHT
SCREW
G11-08-08U (4)

DETAIL DE



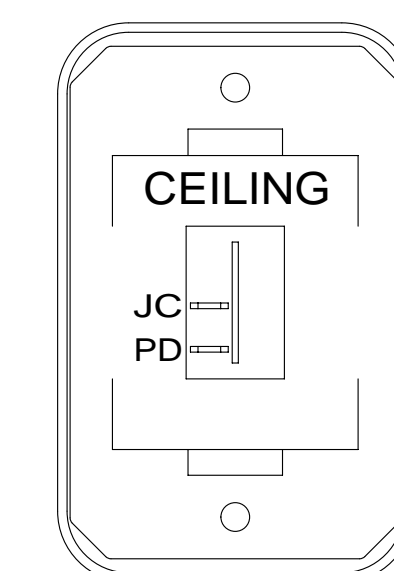
SWITCH-ROCKER
135740-01-CHT
SWITCH-BASE
135741-01-CHT
SWITCH-BEZEL
135742-01-CHT
SCREW
G11-08-08U (2)

DETAIL DJ



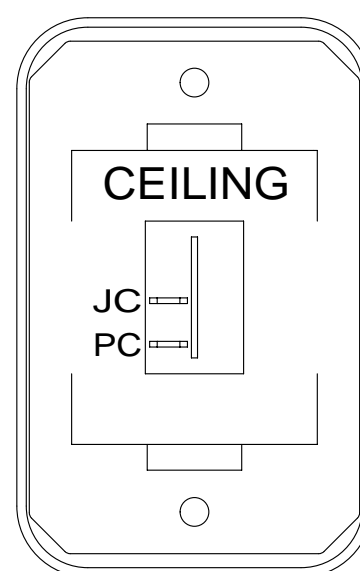
SWITCH-ROCKER
135740-01-CHT
SWITCH-BASE
135741-01-CHT
SWITCH-BEZEL
135742-45-CHT
SCREW
G11-08-08U (2)

DETAIL DM (1LK)



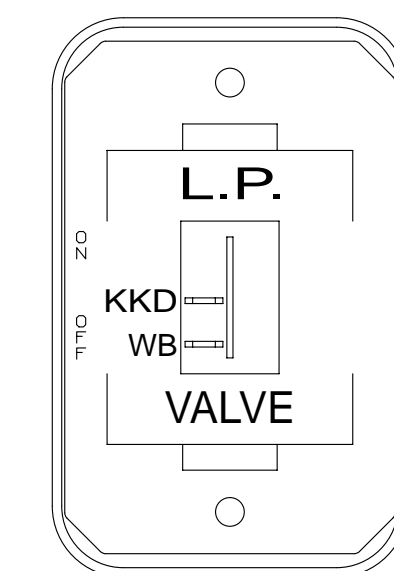
SWITCH-ROCKER
135740-01-CHT
SWITCH-BASE
135741-01-CHT
SWITCH-BEZEL
135742-07-CHT
SCREW
G11-08-08U (2)

DETAIL DR



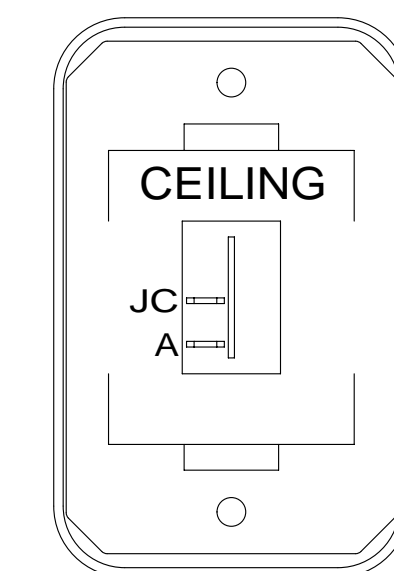
SWITCH-ROCKER
135740-01-CHT
SWITCH-BASE
135741-01-CHT
SWITCH-BEZEL
135742-07-CHT
SCREW
G11-08-08U (2)

DETAIL DB



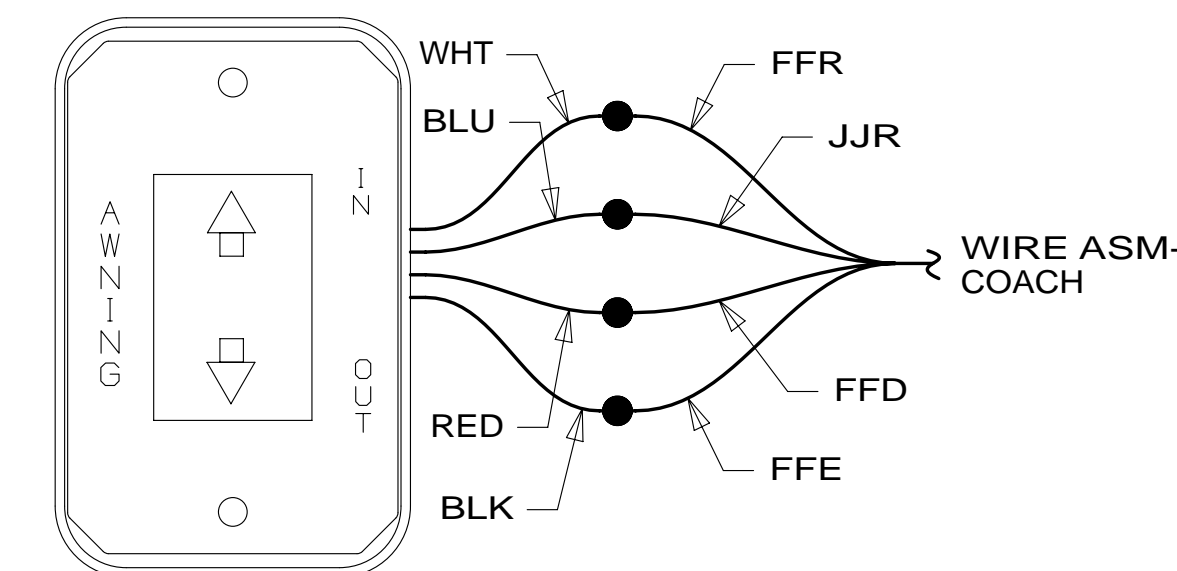
SWITCH-ROCKER
135740-01-CHT
SWITCH-BASE
135741-01-CHT
SWITCH-BEZEL
135742-59-CHT
SCREW
G11-08-08U (2)

DETAIL DG

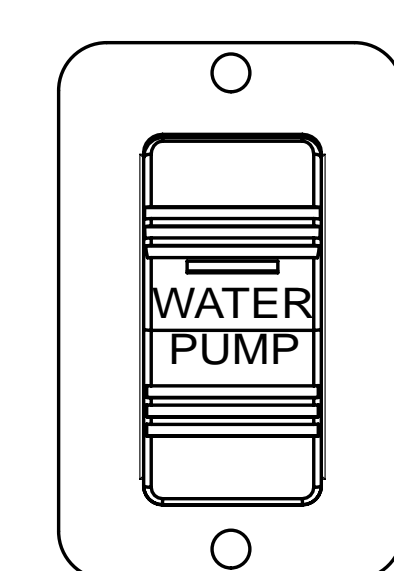


SWITCH-ROCKER
135740-01-CHT
SWITCH-BASE
135741-01-CHT
SWITCH-BEZEL
135742-07-CHT
SCREW
G11-08-08U (2)

DETAIL DK

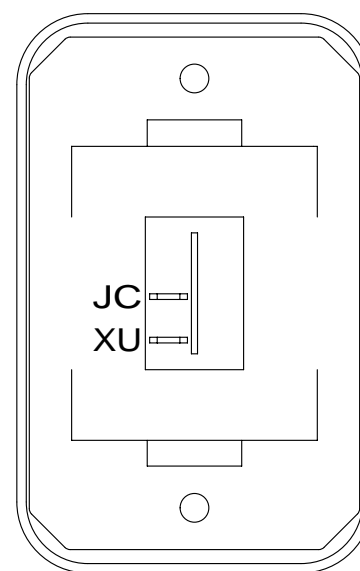


DETAIL DP (SUPPLIED WITH AWNING) (52N)



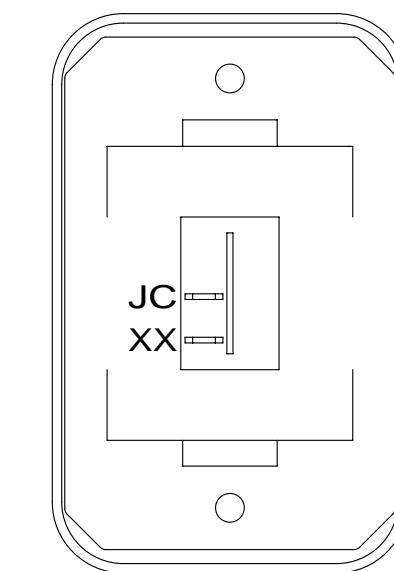
SWITCH-WATER PUMP
108357-21-000
ACTUATOR
108356-23-CHT
PLATE
144363-02-CHT
SCREW
G11-06-10U (2)

DETAIL DT



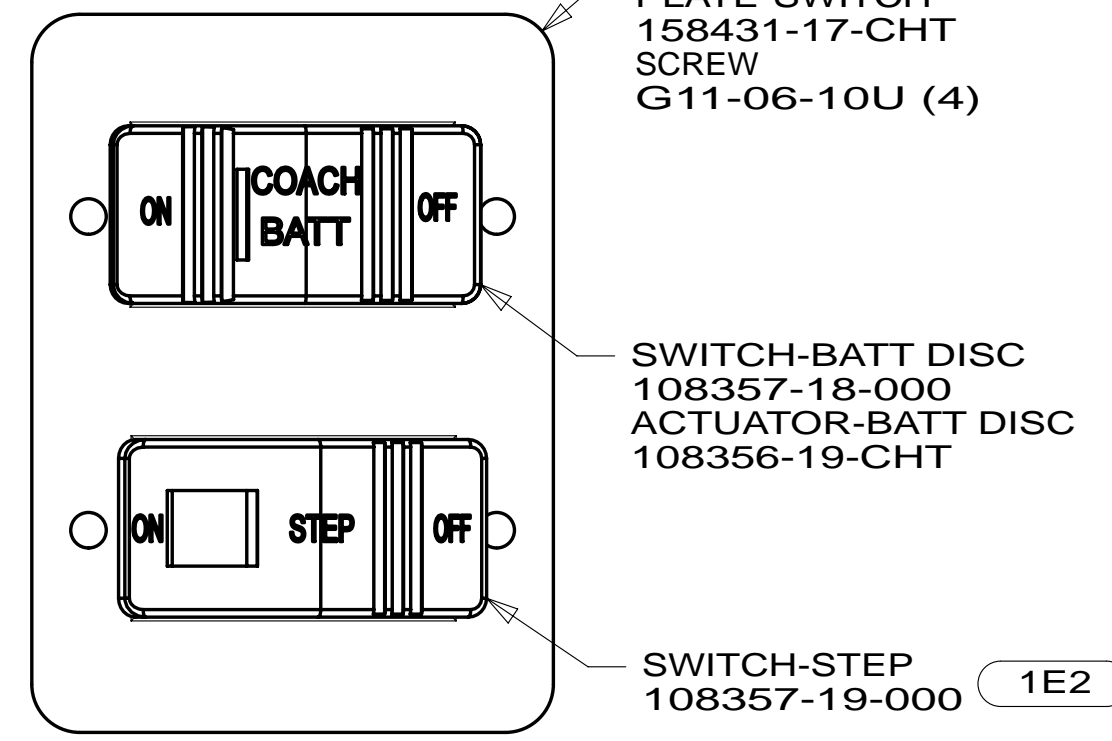
SWITCH-ROCKER
135740-01-CHT (2)
SWITCH-BASE
135741-01-CHT (2)
SWITCH-BEZEL
135742-01-CHT (2)
SCREW
G11-08-08U (4)

DETAIL DC (14W) OR (141)

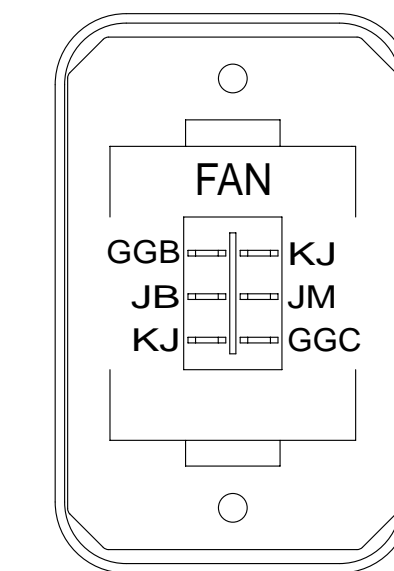


SWITCH-ROCKER
135740-01-CHT
SWITCH-BASE
135741-01-CHT
SWITCH-BEZEL
135742-01-CHT
SCREW
G11-08-08U (2)

DETAIL DH

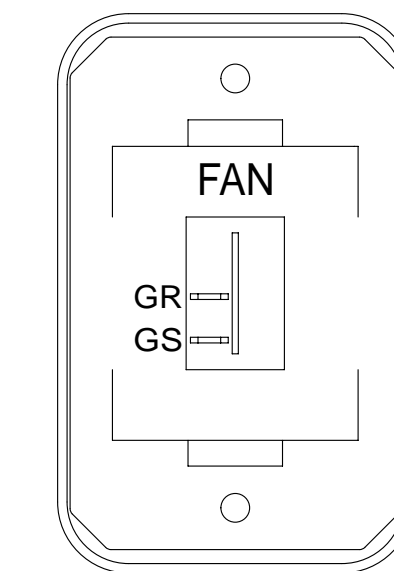


DETAIL DL



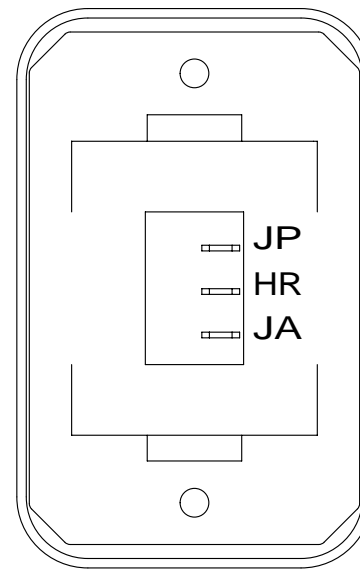
SWITCH-ROCKER
135740-03-CHT
SWITCH-BASE
135741-01-CHT
SWITCH-BEZEL
135742-12-CHT
SCREW
G11-08-08U (2)

DETAIL DS (316)



SWITCH-ROCKER
135740-01-CHT
SWITCH-BASE
135741-01-CHT
SWITCH-BEZEL
135742-12-CHT
SCREW
G11-08-08U (2)

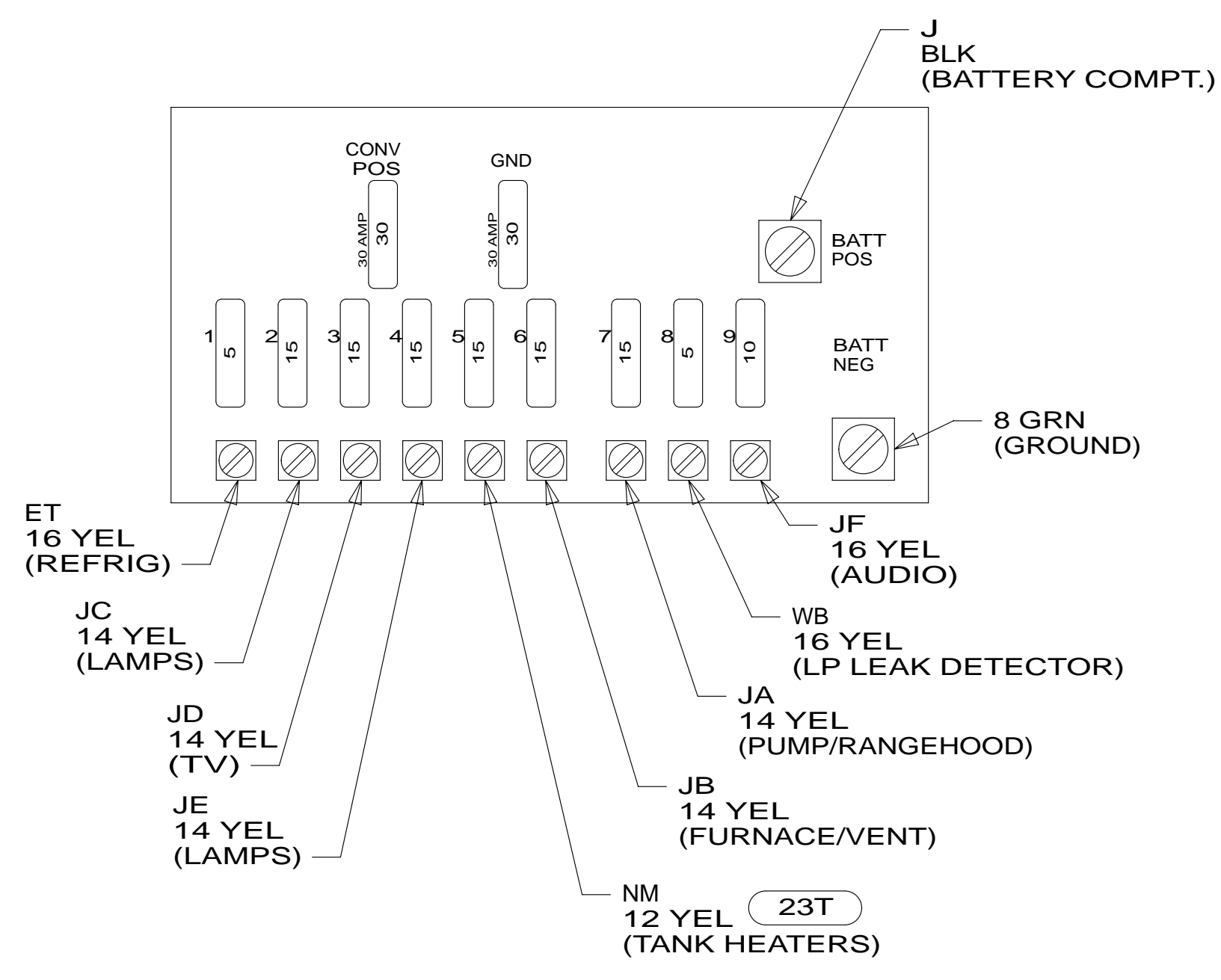
DETAIL DS (710)



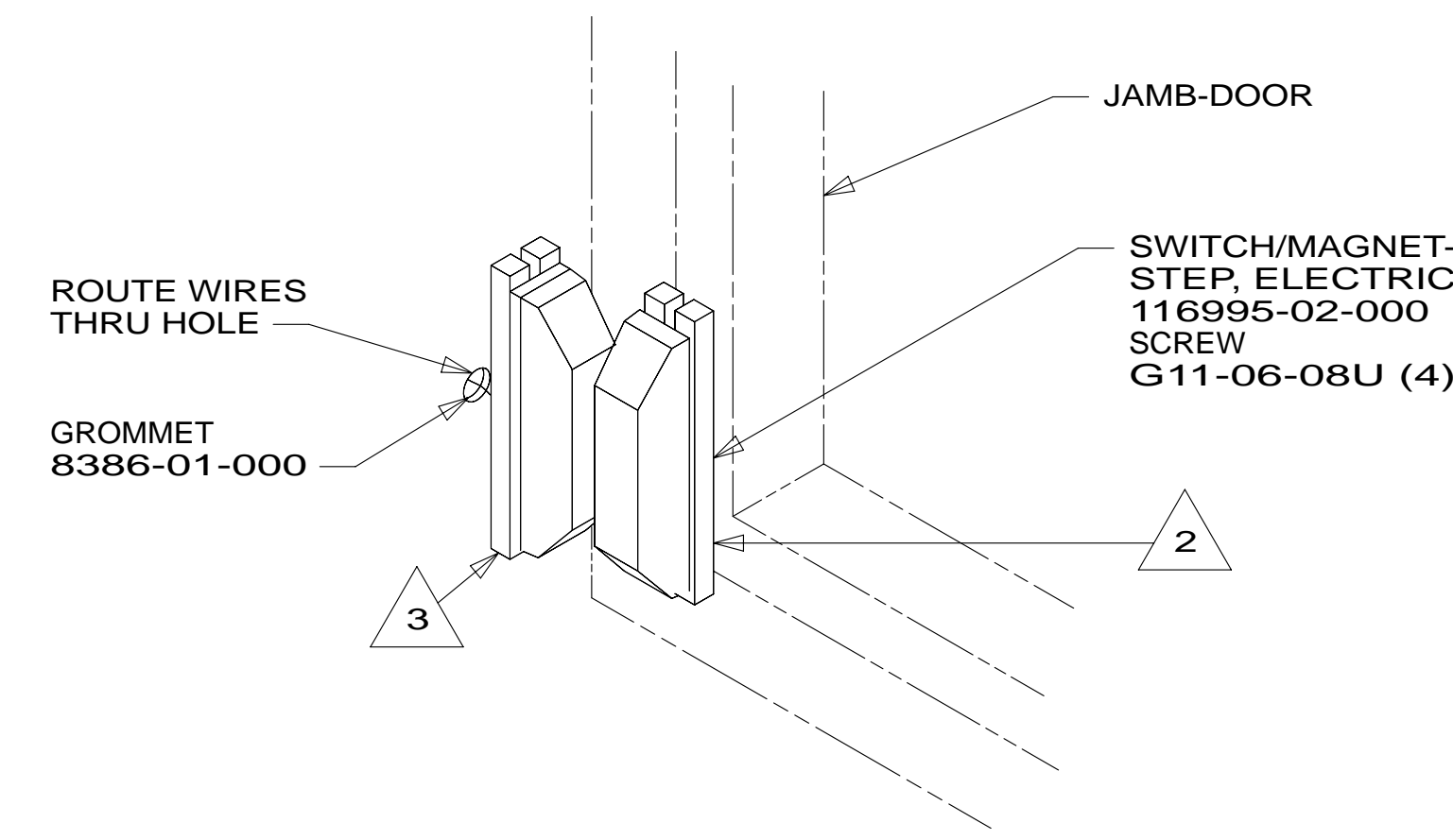
SWITCH-BLANK
138253-01-CHT
SWITCH-ROCKER
135740-06-CHT
SWITCH-BASE
135741-01-CHT
SWITCH-BEZEL
135742-01-CHT
SCREW
G11-08-08U (2)
LABEL-SWITCH
134563-01-CHT

DETAIL DD

HOLDING TANK HEATER
TURN OFF When Not In Use
SEE OPERATORS MANUAL



DETAIL DN (4)



DETAIL DF

FOR ELECTRICAL TORQUE SPECIFICATIONS SEE DWG NO. 128783-01-000

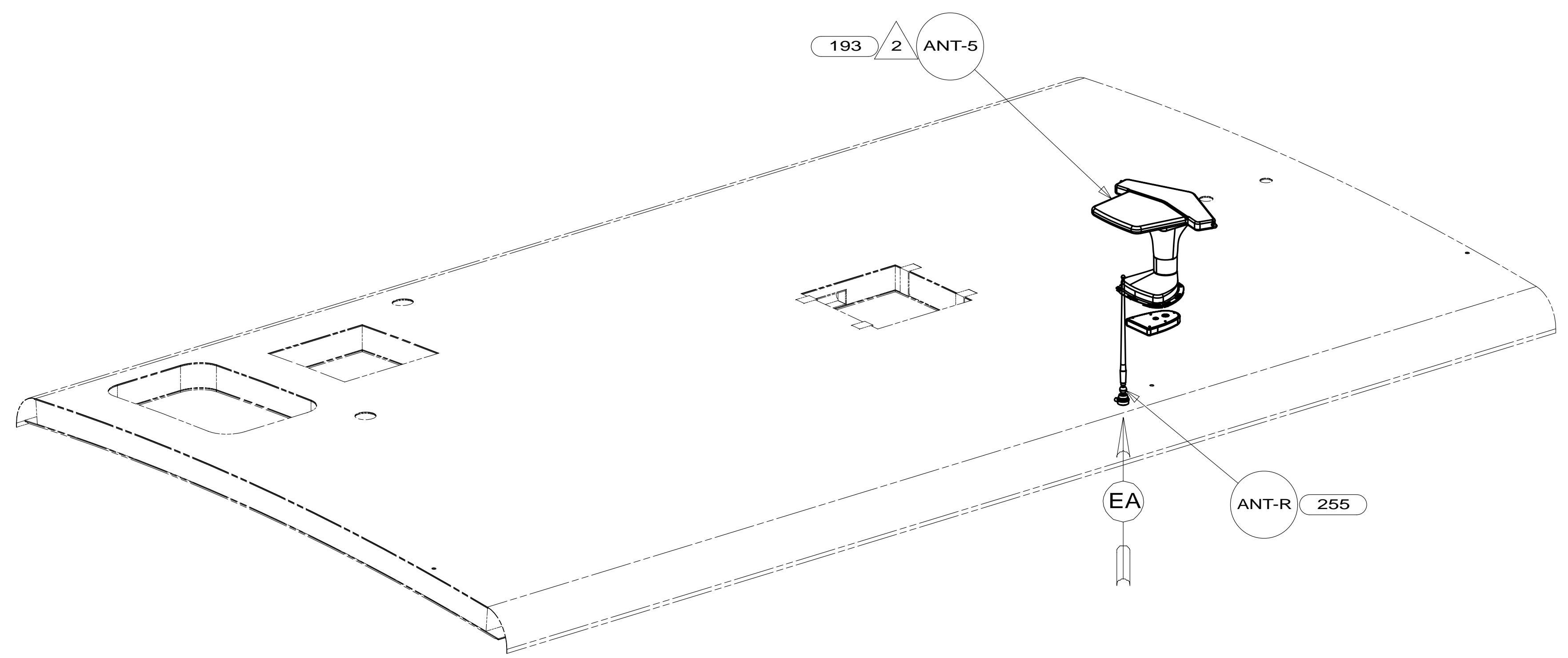
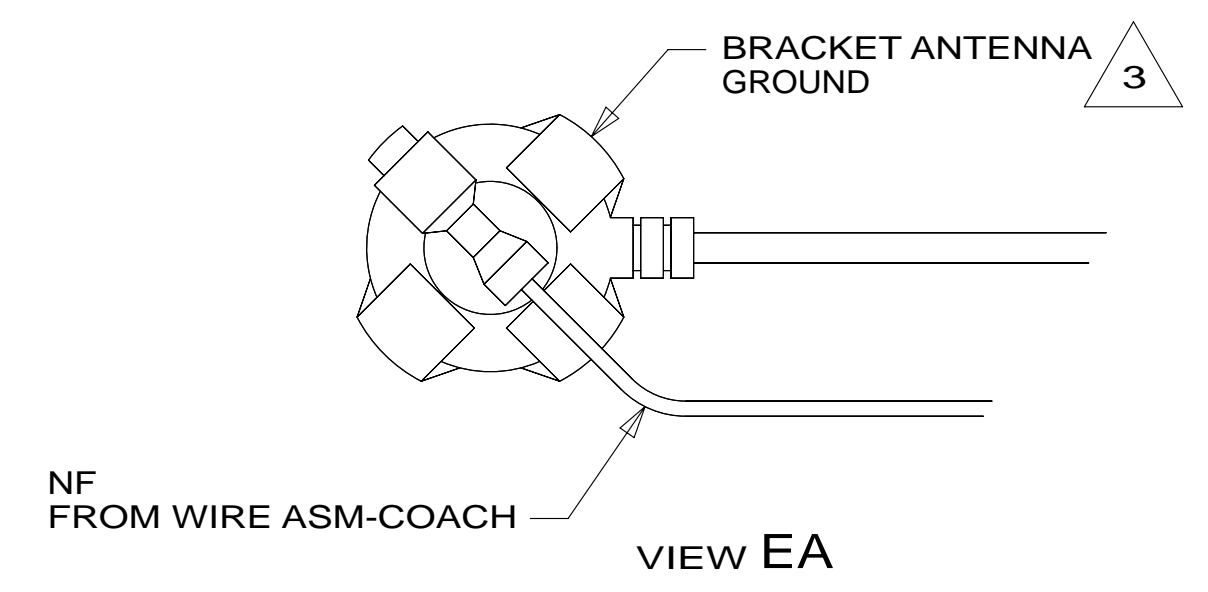
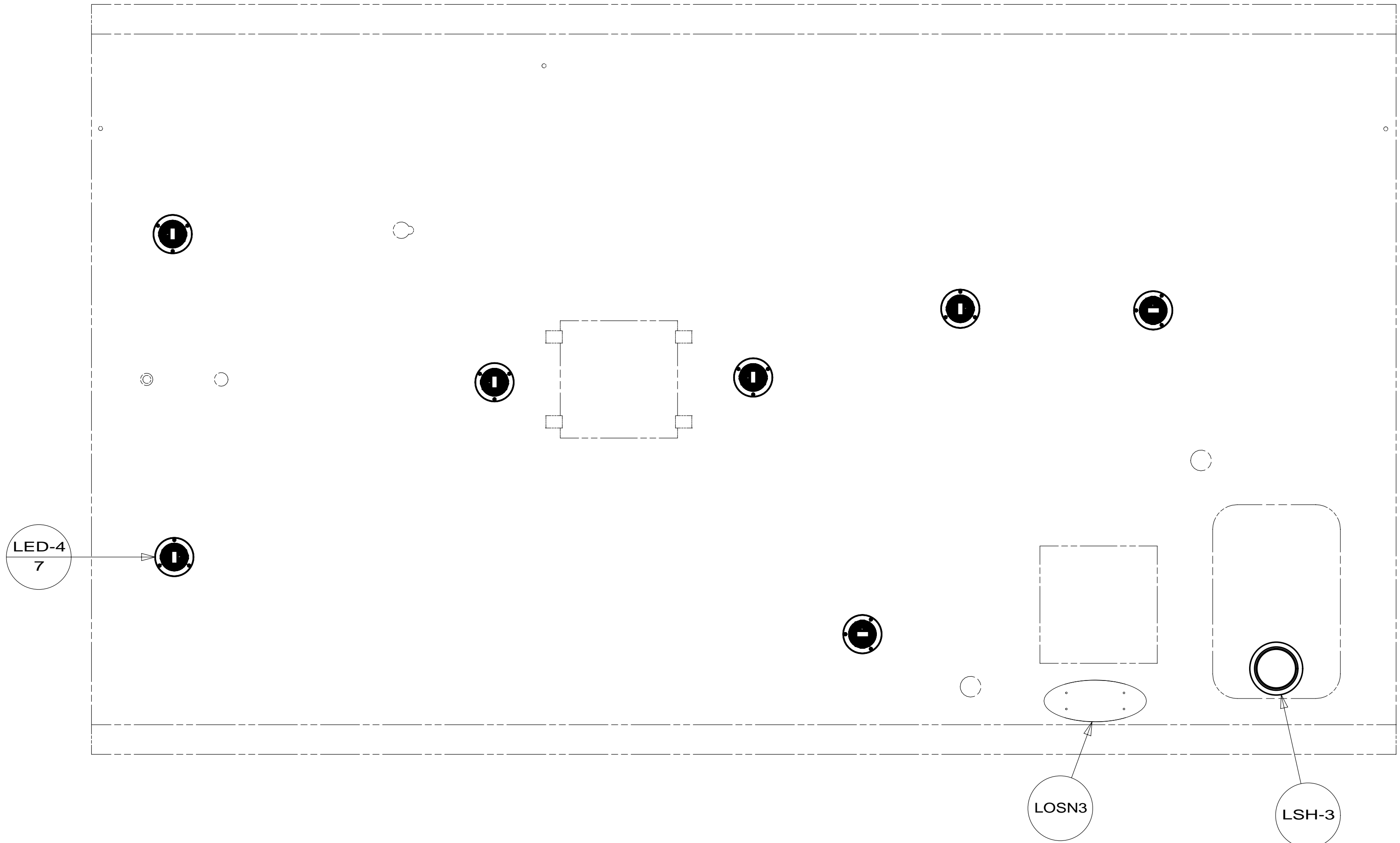
FOR ELECTRICAL CALLOUTS SEE DWG NO. 121339-01-000

- (141) DINETTE - ULTRALEATHER
- (14W) DINETTE
- (710) VENT ROOF-POWERED,INSULATED
- (316) SKYLIGHT/ROOF VENT, POWER
- (23R) DRAINAGE SYSTEM/HEAT-PREWIRED
- (52N) AWNING - PATIO, ELECTRIC
- (23T) DRAINAGE SYSTEM-HEATED
- (1LK) TV-20"DC,COLOR,LCD W/REMOTE
- (1E2) ENTRANCE STEP-ELEC.
- (265) CODES/STANDARDS-CSA/CMVSS
- (1B1) CODES/STANDARDS USA

FIRST USED	
13 524J	
DO NOT SCALE DRAWING	
WIRING INSTL-BODY,12V	
SHEET 4	PART NO 181925 REV

- NOTES:
- 4 FOR REFERENCE ONLY. SEE LOAD CENTER/ATS ASM FOR ADDITIONAL INFORMATION.
 - 3 MOUNT SWITCH AND SPACER TO BLOCK ON JAMB. ADJUST HEIGHT TO MATCH MAGNET.
 - 2 MOUNT MAGNET USING PILOT HOLES IN SCREEN DOOR FRAME. MOUNT WITH MAGNET TOWARD SWITCH.
 - 1 WITHOUT (23T) OR (23R)

* 181925 * A



- 3 WRAP BRACKET LEGS AROUND ANTENNA BASE.
- 2 SEE ANTENNA INSTALLATION MANUAL FOR CORRECT INSTALLATION PROCEDURE.
- 1. SEE ROOF ASM FOR ADDITIONAL INFORMATION.

NOTES:

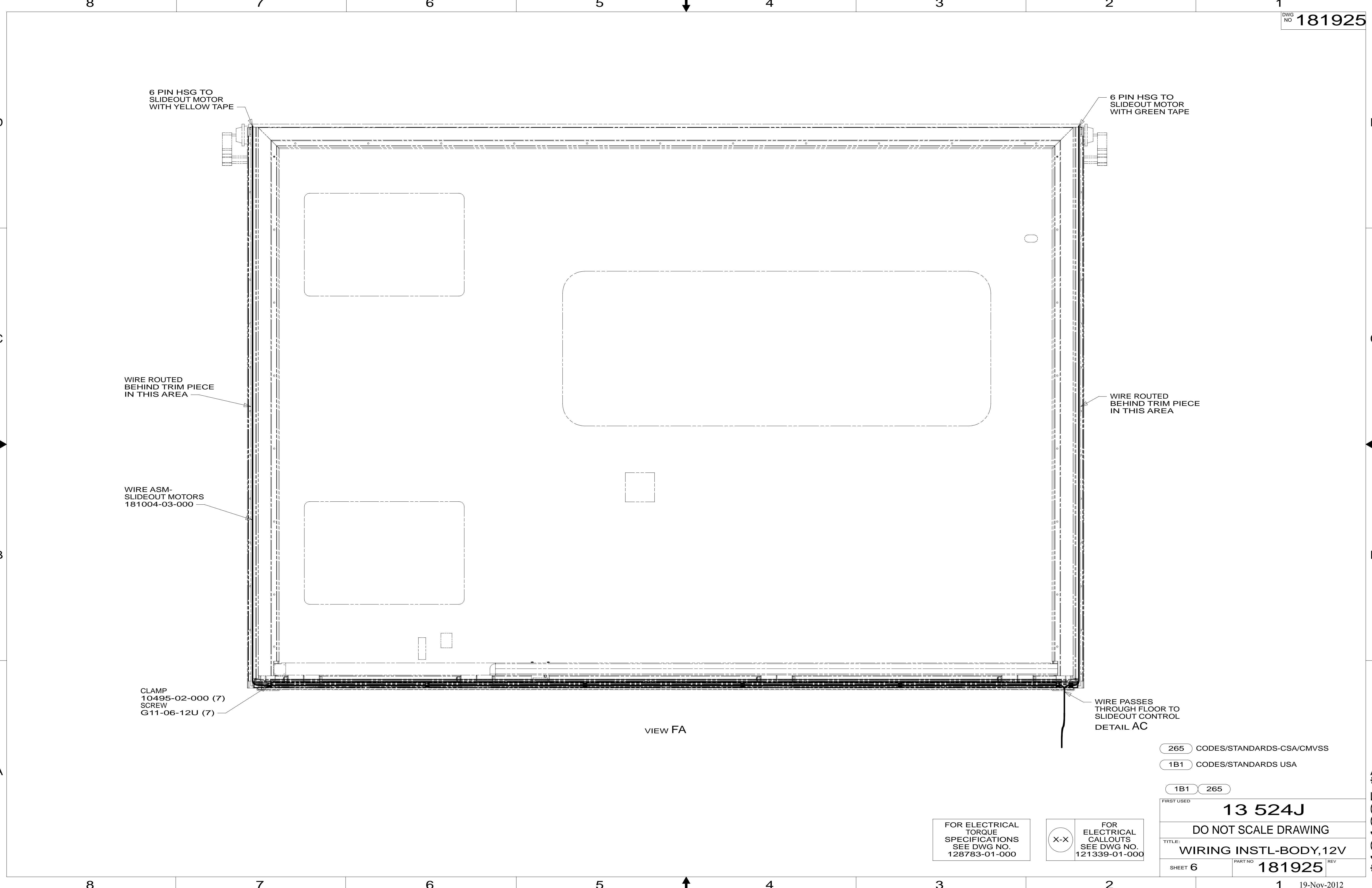
- 193 TV ANTENNA-AMPLIFIED SYSTEM
- 255 RADIO/AM/FM/CD/DVD, COACH
- 265 CODES/STANDARDS-CSA/CMVSS
- 1B1 CODES/STANDARDS USA

FIRST USED	13 524J	
DO NOT SCALE DRAWING		
TITLE: WIRING INSTL-BODY,12V		
SHEET 5	PART NO 181925	REV

FOR ELECTRICAL TORQUE SPECIFICATIONS SEE DWG NO. 128783-01-000

FOR ELECTRICAL CALLOUTS SEE DWG NO. 121339-01-000

* 181925 * A



VIEW FA

265 CODES/STANDARDS-CSA/CMVSS

1B1 CODES/STANDARDS USA

1B1 265

FIRST USED 13 524J

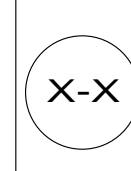
DO NOT SCALE DRAWING

TITLE: WIRING INSTL-BODY,12V

SHEET 6 PART NO 181925 REV

FOR ELECTRICAL TORQUE SPECIFICATIONS SEE DWG NO. 128783-01-000

FOR ELECTRICAL CALLOUTS SEE DWG NO. 121339-01-000



* 181925 * A