



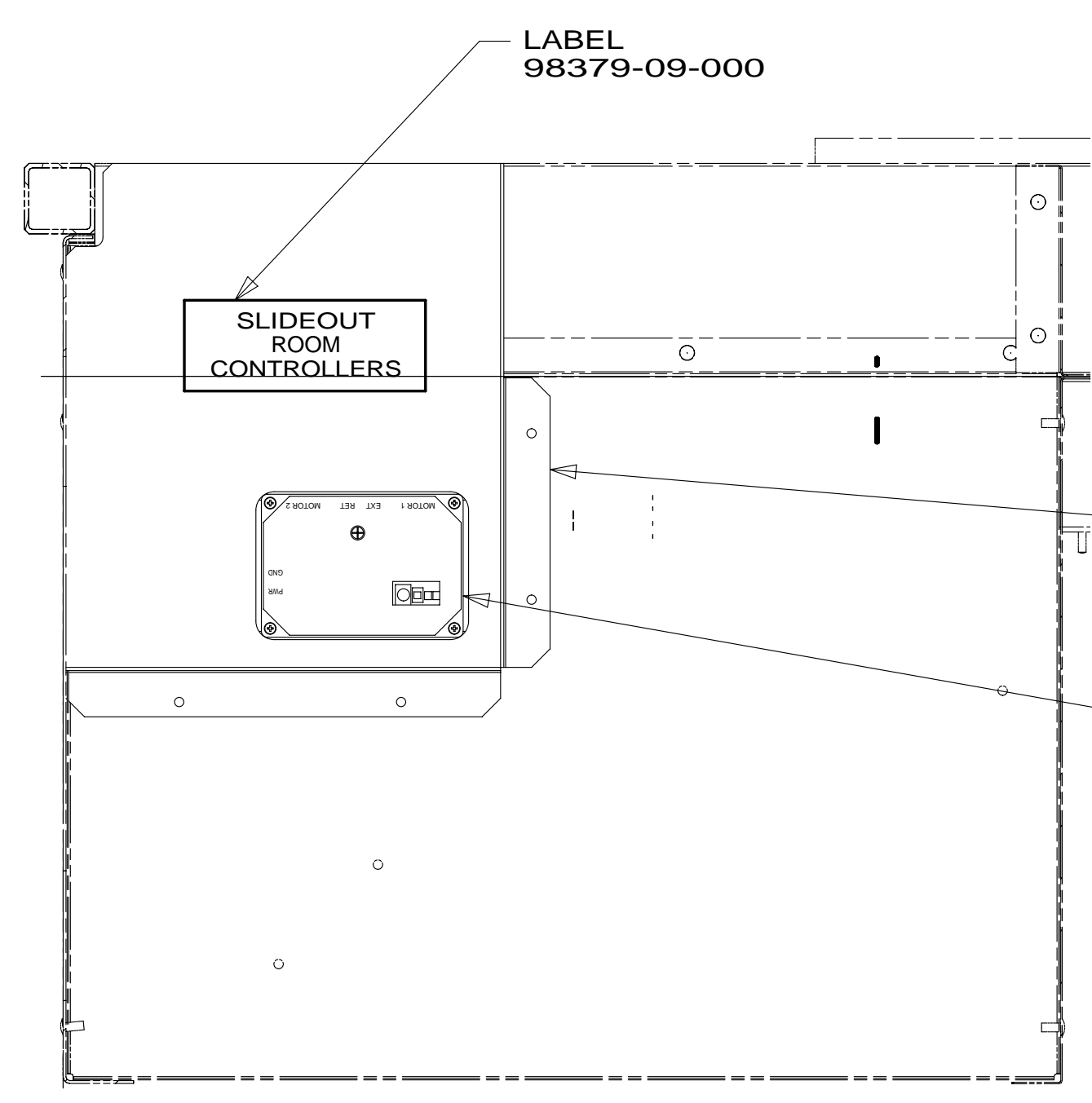
DANGER

Danger of electrical shock, burns or death. Always remove all power sources before attempting any repair, service or diagnostic work. Power can be present from shore power, generator, inverter or battery. All power sources must be disabled and secured before performing any service.

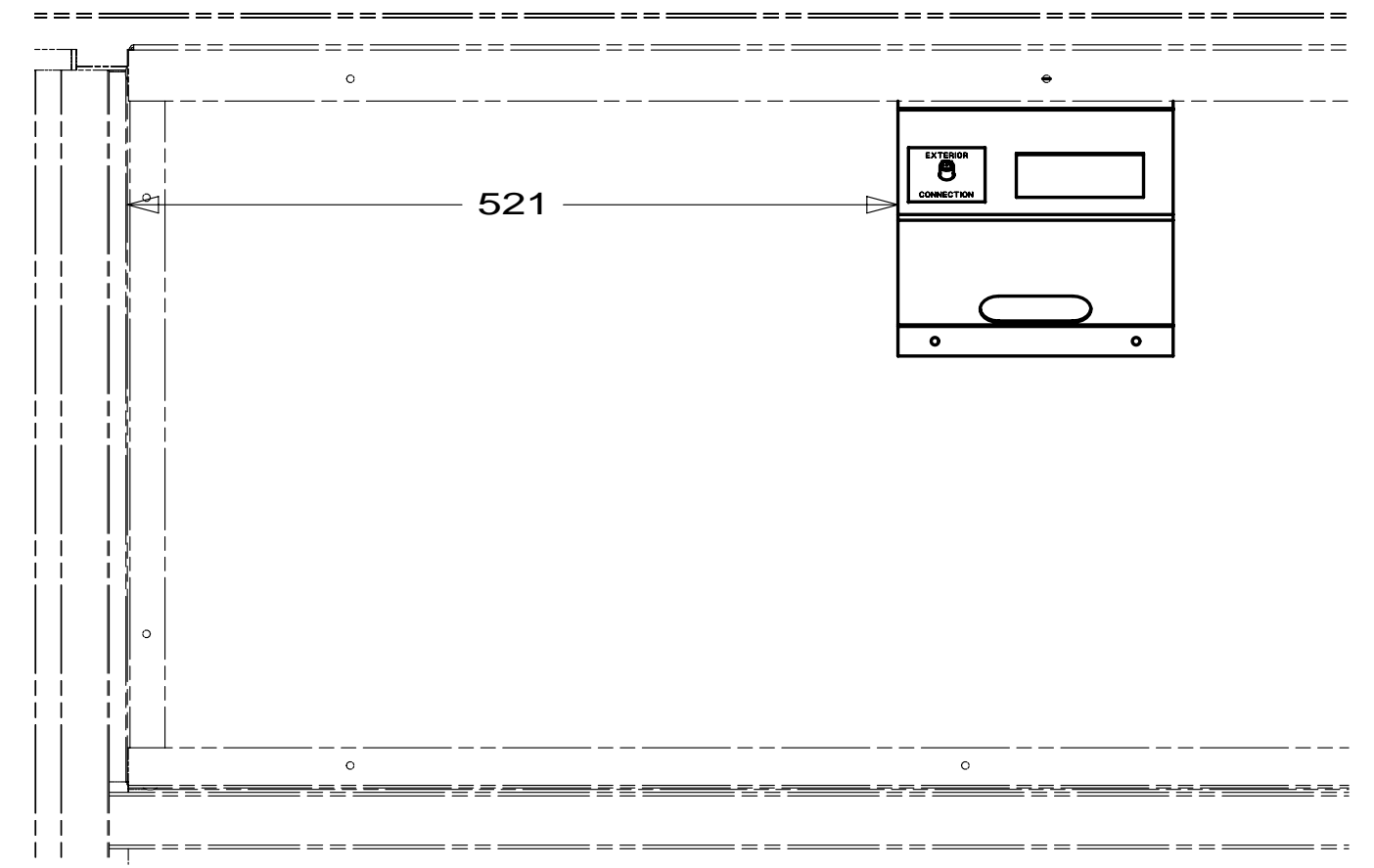


CAUTION

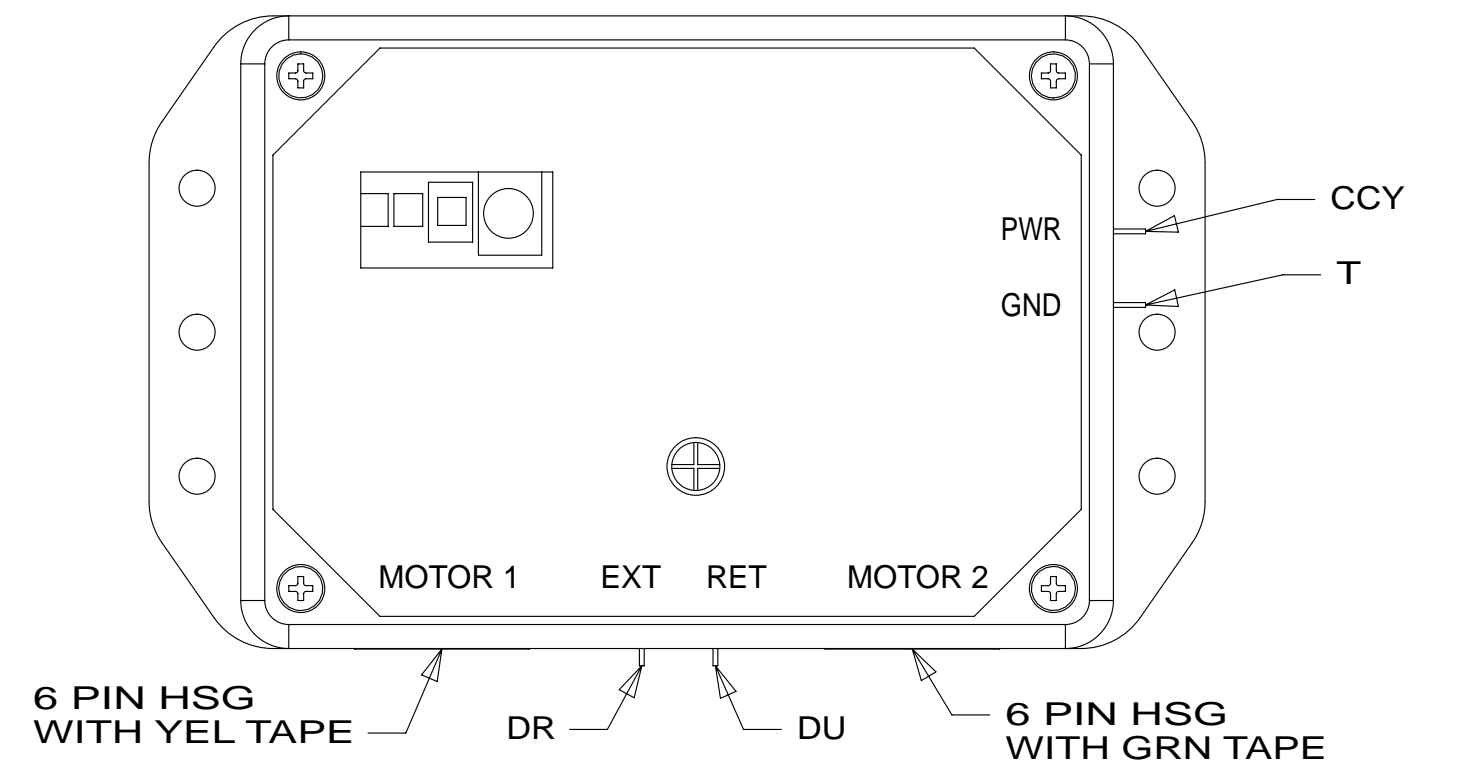
If you lack the skills, tools or equipment to perform diagnostic or repair work leave such work to an authorized Winnebago Industries dealer or other qualified shop.



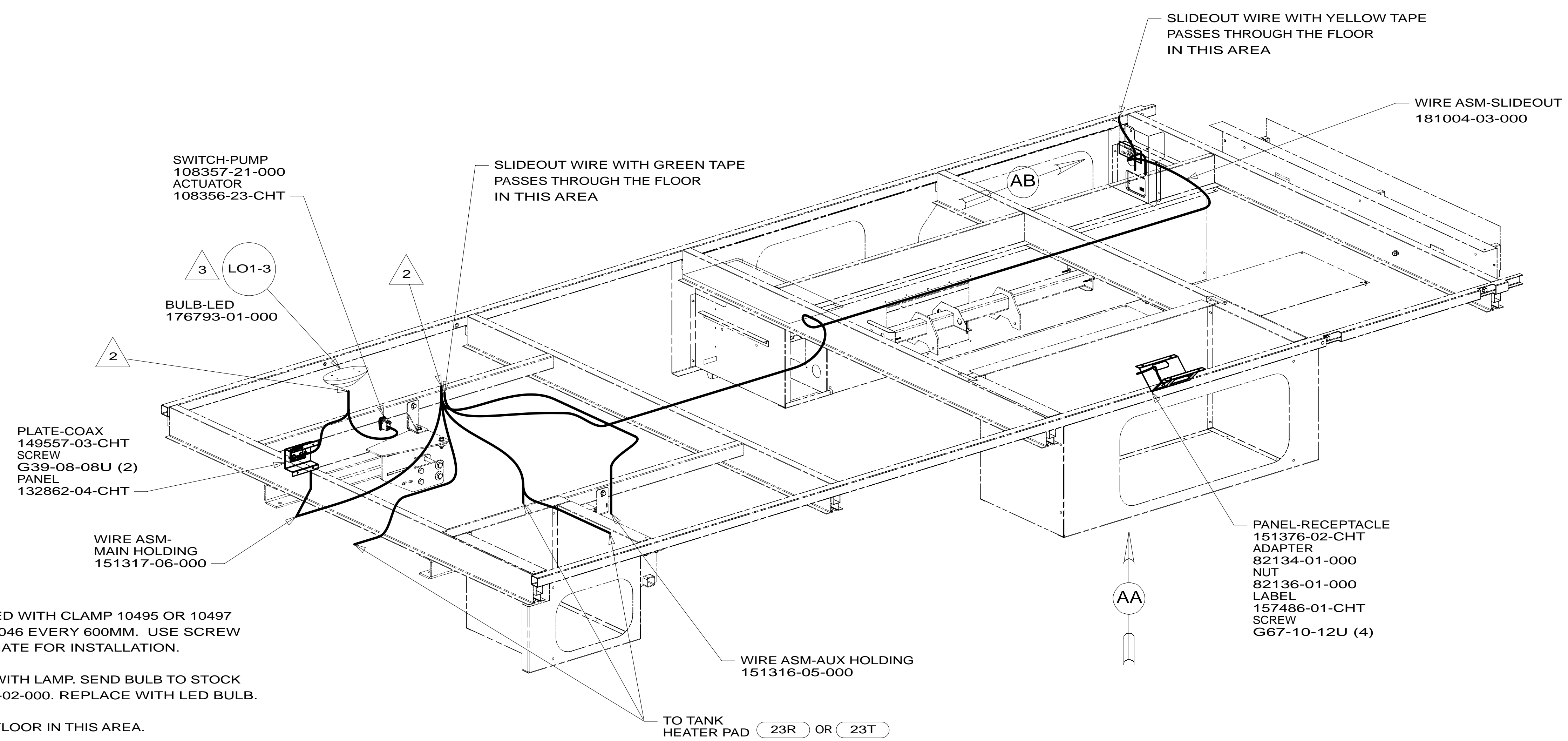
VIEW AB



VIEW AA



DETAIL AC



- NOTES:
- ROUTE TANK SENSOR WIRES SO THEY DO NOT PASS OVER SENSORS. USE WIRE TIE MOUNT 155366-01-000 AS NEEDED. TANK SURFACE MUST BE CLEANED USING ISOPROPYL ALCOHOL AND PRIME WITH PRIMER 94.
 - WIRE ROUTED THROUGH FLOOR IN THIS AREA.
 - REMOVE BULB SUPPLIED WITH LAMP. SEND BULB TO STOCK AS PART NUMBER 117805-02-000. REPLACE WITH LED BULB.
 - ALL WIRES TO BE CLAMPED WITH CLAMP 10495 OR 10497 OR WIRE TIE 8343 OR 108046 EVERY 600MM. USE SCREW G39-XX-XXX AS APPROPRIATE FOR INSTALLATION.

- 23T DRAINAGE SYSTEM-HEATED
- 23R DRAINAGE SYSTEM/HEAT-PREWIRE
- 265 CODES/STANDARDS-CSA/CMVSS
- 1B1 CODES/STANDARDS USA

1B1 265

WINNEBAGO COPYRIGHT 2011 WINNEBAGO INDUSTRIES, INC.

DFTR	ORIG. DATE
CHKR	ALL DIMENSIONS ARE IN MILLIMETERS
P.E.	FIRST USED
M.E.	13 524M
DSNR	

UNSPECIFIED TOLERANCES ARE:

WHOLE DIM (X)	: 3
ONE-PLACE (X.X)	: 1.5
TWO-PLACE (X.XX)	: 0.50
ANGLE	: 1°

THIRD ANGLE PROJECTION

DO NOT SCALE DRAWING REFER TO ES0018 FOR FASTENER TIGHTENING GUIDELINES

TITLE: **WIRING INSTL-BODY, 12V**

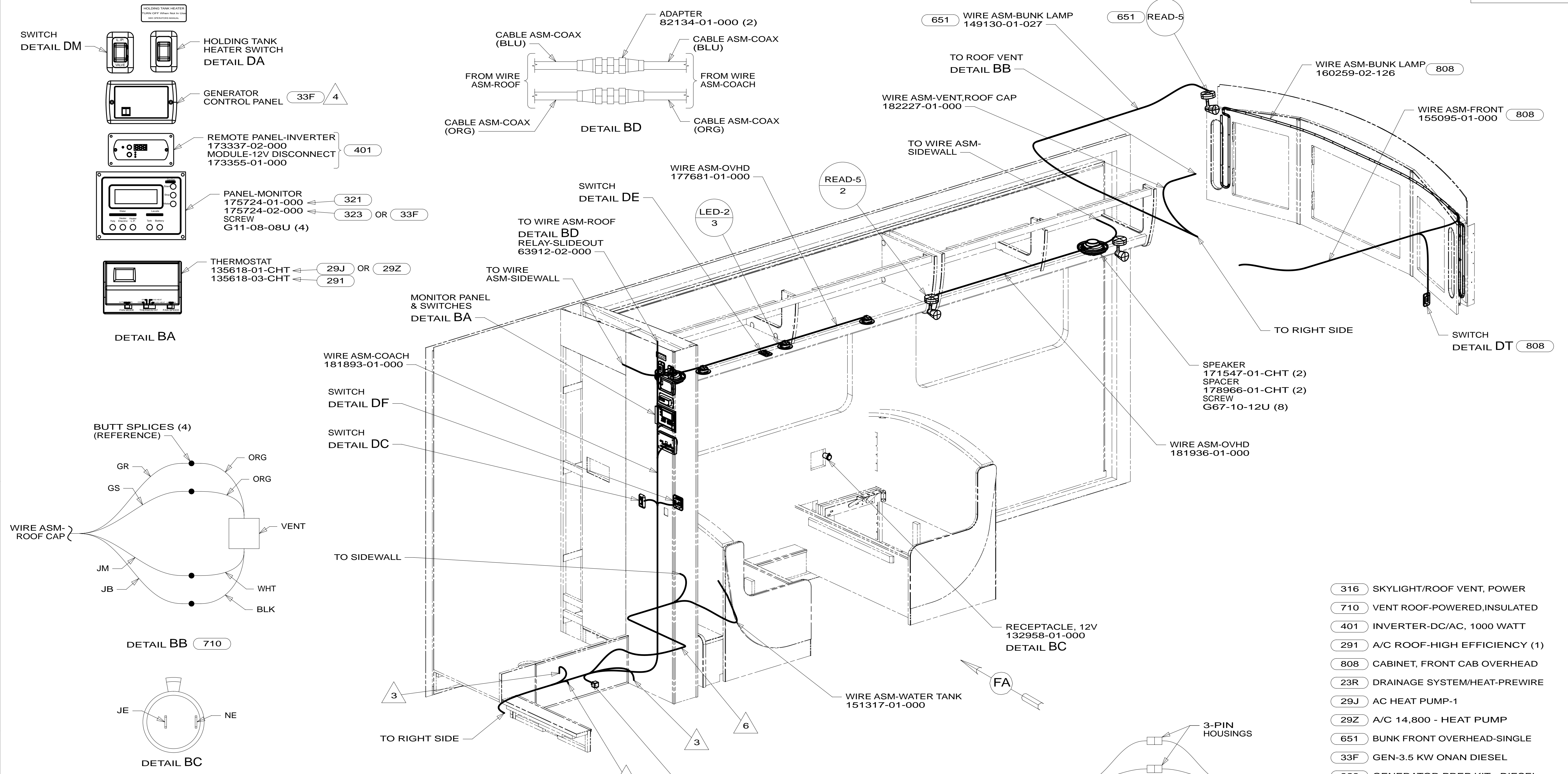
SHEET **1** OF **6** PART NO **181758** REV

REF: **1** 03-Dec-2012

FOR ELECTRICAL TORQUE SPECIFICATIONS SEE DWG NO. 128783-01-000

FOR ELECTRICAL CALLOUTS SEE DWG NO. 121339-01-000

* 181758 *



- NOTES:**
- 6 ROUTE WIRES WITH WATER LINES INTO SLIDEOUT.
 - 5 WIRE ROUTED IN SIDEWALL.
 - 4 PANEL SUPPLIED WITH GENERATOR.
 - 3 WIRE PASSES THROUGH FLOOR AT THIS POINT.
2. SEE WIRING DIAGRAM-BODY,12V FOR ADDITIONAL INFORMATION.
1. ALL WIRES TO BE CLAMPED WITH CLAMP 10495 OR 10497 OR WIRE TIE 8343 OR 108046 EVERY 600MM, USE SCREW G67-XX-XXXX OR G65-XX-XXX AS APPROPRIATE FOR INSTALLATION.

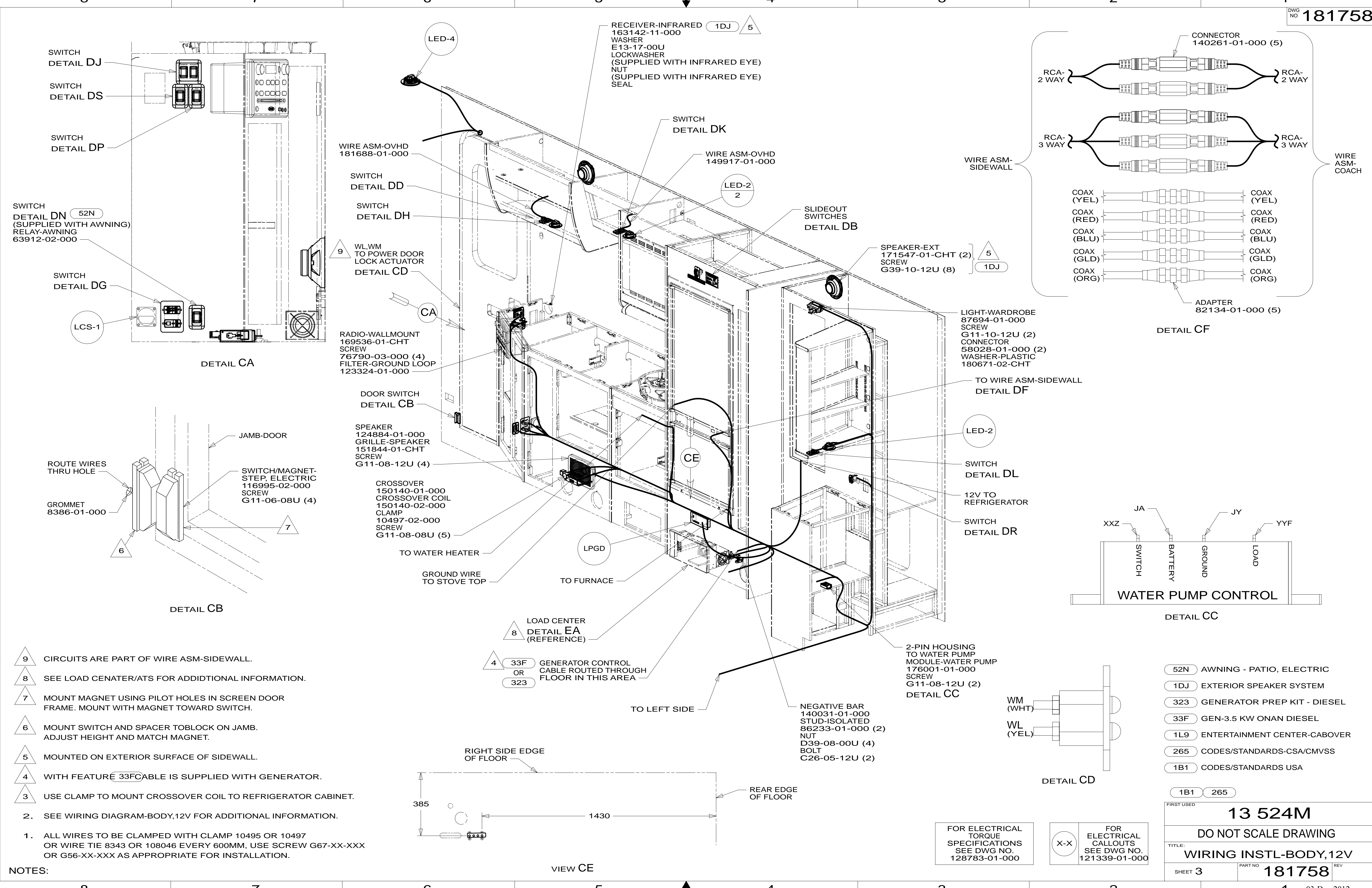
- 316 SKYLIGHT/ROOF VENT, POWER
- 710 VENT ROOF-POWERED,INSULATED
- 401 INVERTER-DC/AC, 1000 WATT
- 291 A/C ROOF-HIGH EFFICIENCY (1)
- 808 CABINET, FRONT CAB OVERHEAD
- 23R DRAINAGE SYSTEM/HEAT-PREWIRE
- 29J AC HEAT PUMP-1
- 29Z A/C 14,800 - HEAT PUMP
- 651 BUNK FRONT OVERHEAD-SINGLE
- 33F GEN-3.5 KW ONAN DIESEL
- 323 GENERATOR PREP KIT - DIESEL
- 321 GENERATOR PREP KIT
- 23T DRAINAGE SYSTEM-HEATED
- 265 CODES/STANDARDS-CSA/CMVSS
- 1B1 CODES/STANDARDS USA

FOR ELECTRICAL TORQUE SPECIFICATIONS SEE DWG NO. 128783-01-000

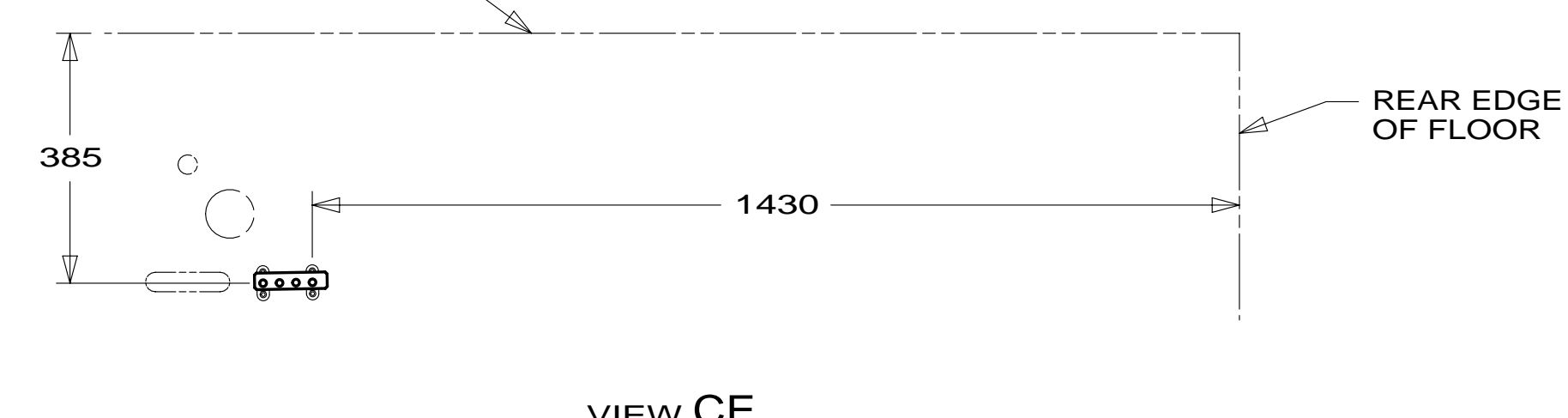
FOR ELECTRICAL CALLOUTS SEE DWG NO. 121339-01-000

FIRST USED		13 524M	
DO NOT SCALE DRAWING			
TITLE: WIRING INSTL-BODY,12V			
SHEET 2	PART NO	181758	REV
		1	03-Dec-2012

* 181758 * A



- 9 CIRCUITS ARE PART OF WIRE ASM-SIDEWALL.
 - 8 SEE LOAD CENTER/ATS FOR ADDITIONAL INFORMATION.
 - 7 MOUNT MAGNET USING PILOT HOLES IN SCREEN DOOR FRAME. MOUNT WITH MAGNET TOWARD SWITCH.
 - 6 MOUNT SWITCH AND SPACER TOBLOCK ON JAMB. ADJUST HEIGHT AND MATCH MAGNET.
 - 5 MOUNTED ON EXTERIOR SURFACE OF SIDEWALL.
 - 4 WITH FEATURE 33FCABLE IS SUPPLIED WITH GENERATOR.
 - 3 USE CLAMP TO MOUNT CROSSOVER COIL TO REFRIGERATOR CABINET.
2. SEE WIRING DIAGRAM-BODY,12V FOR ADDITIONAL INFORMATION.
1. ALL WIRES TO BE CLAMPED WITH CLAMP 10495 OR 10497 OR WIRE TIE 8343 OR 108046 EVERY 600MM, USE SCREW G67-XX-XXX OR G56-XX-XXX AS APPROPRIATE FOR INSTALLATION.



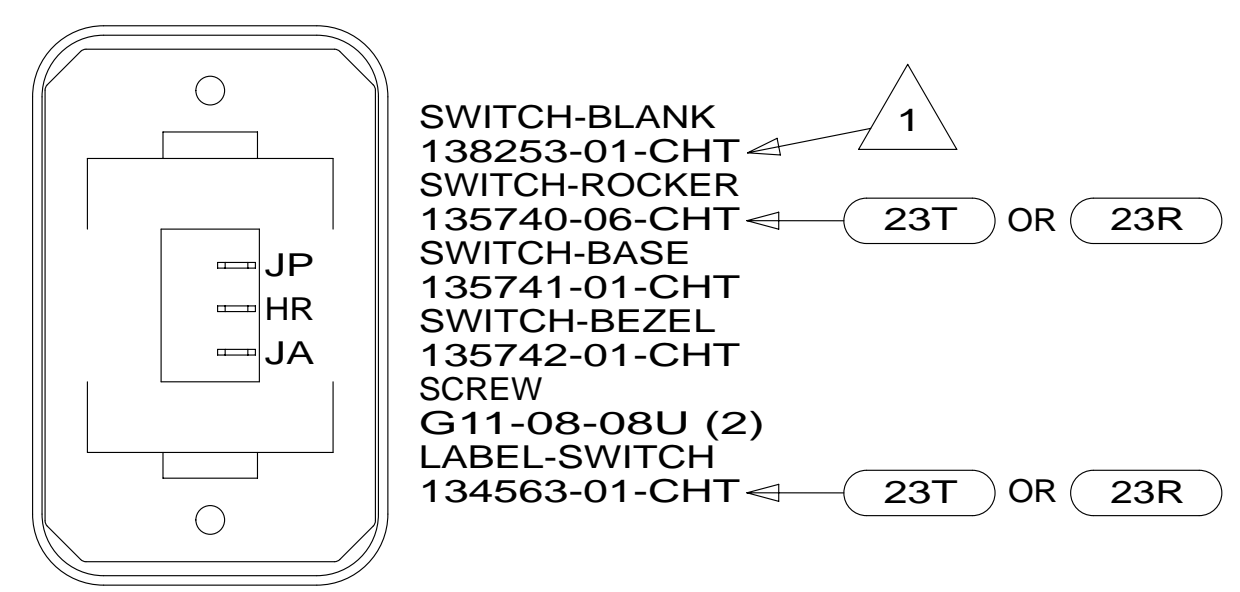
FOR ELECTRICAL TORQUE SPECIFICATIONS SEE DWG NO. 128783-01-000

FOR ELECTRICAL CALLOUTS SEE DWG NO. 121339-01-000

- 52N AWNING - PATIO, ELECTRIC
- 1DJ EXTERIOR SPEAKER SYSTEM
- 323 GENERATOR PREP KIT - DIESEL
- 33F GEN-3.5 KW ONAN DIESEL
- 1L9 ENTERTAINMENT CENTER-CABOVER
- 265 CODES/STANDARDS-CSA/CMVSS
- 1B1 CODES/STANDARDS USA

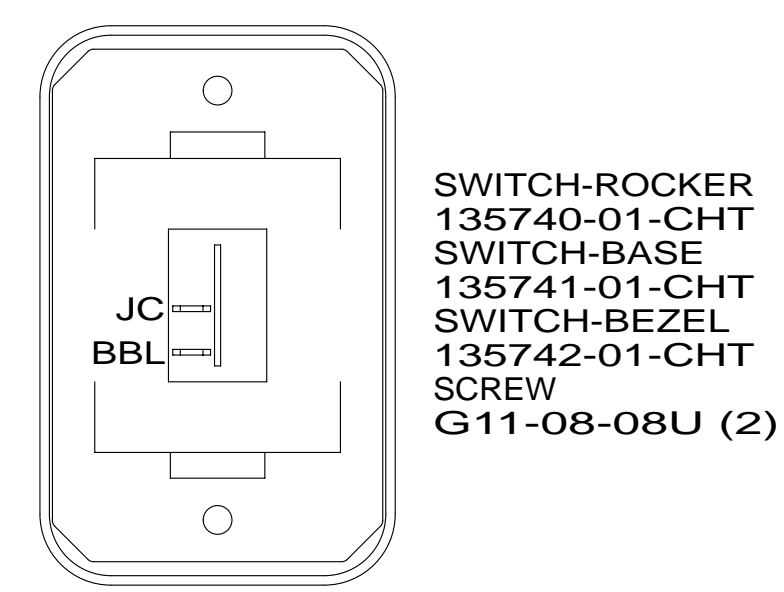
FIRST USED	13 524M
DO NOT SCALE DRAWING	
TITLE: WIRING INSTL-BODY, 12V	
SHEET 3	PART NO 181758 REV
03-Dec-2012	

* 181758 * A

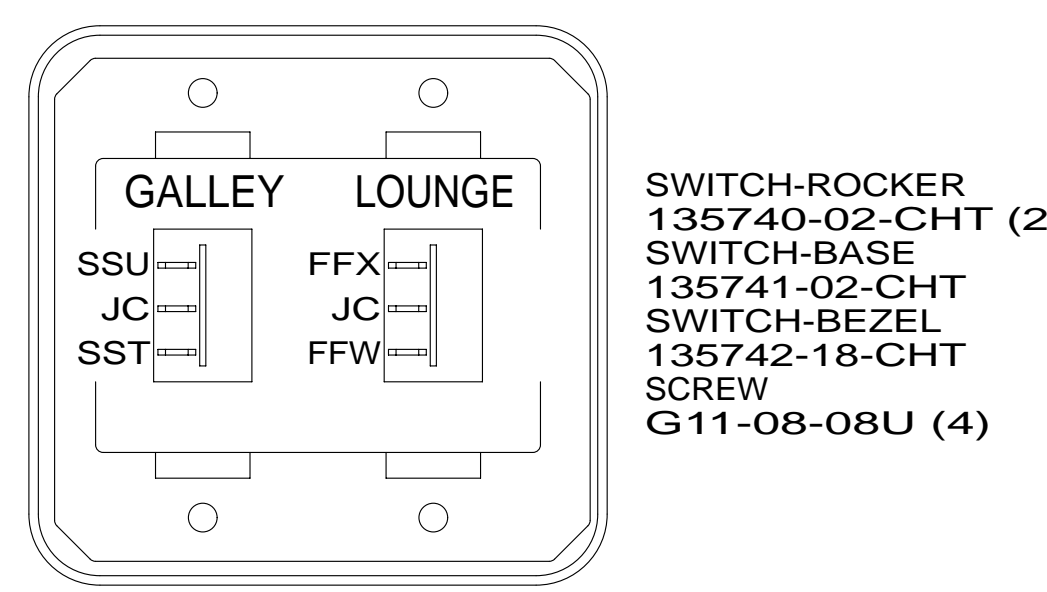


HOLDING TANK HEATER
TURN OFF When Not In Use
SEE OPERATORS MANUAL

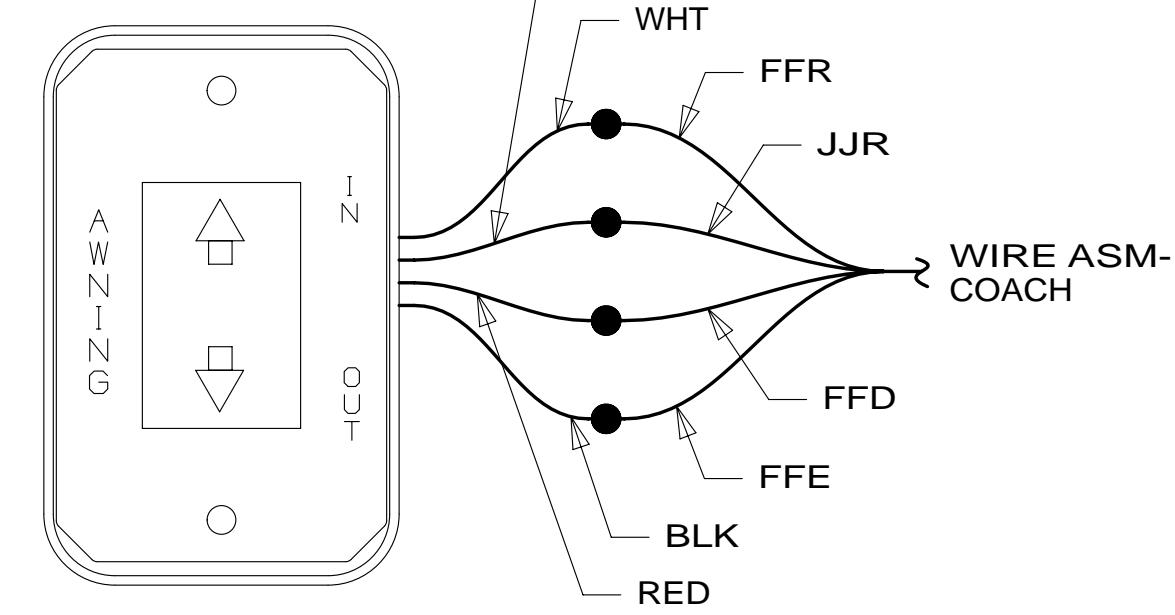
DETAIL DA



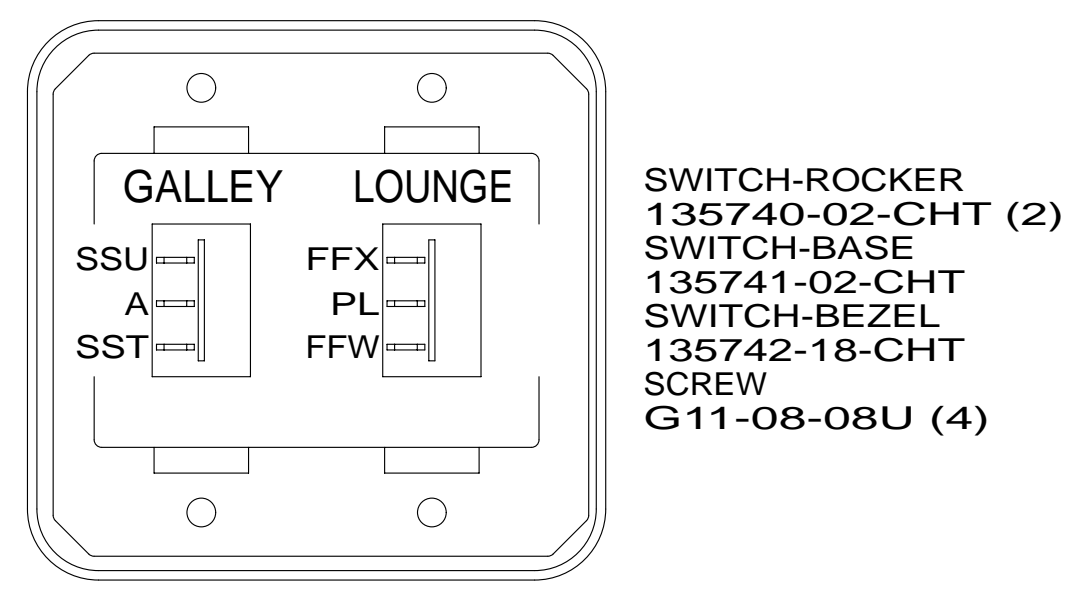
DETAIL DE



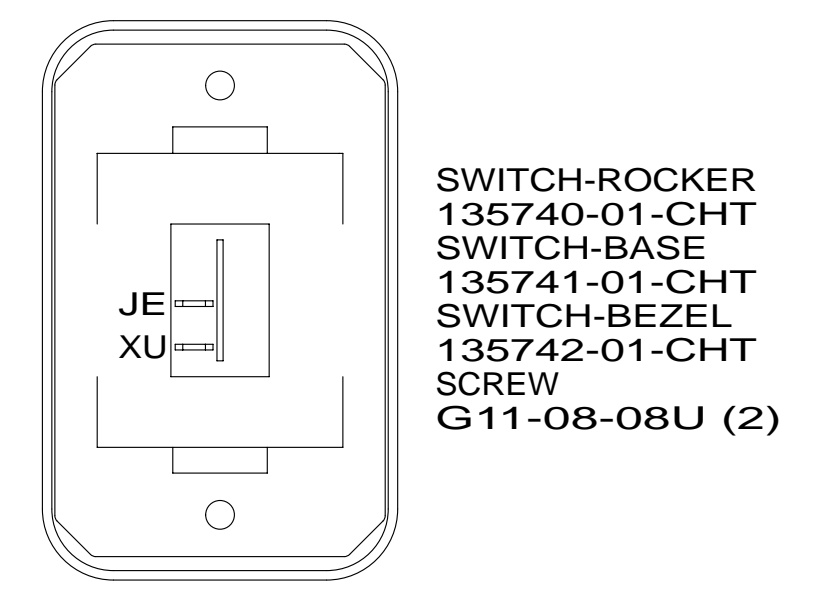
DETAIL DJ



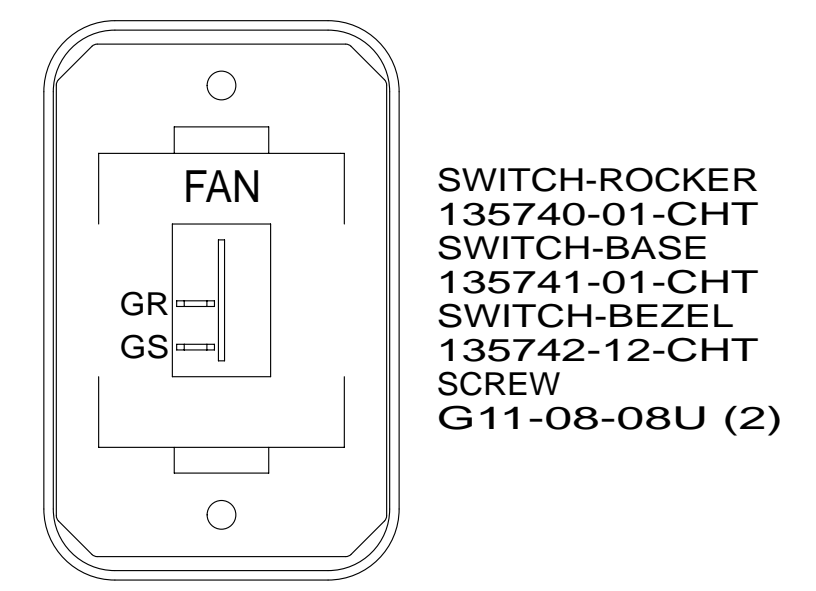
DETAIL DN
(SUPPLIED WITH AWNING) 52N



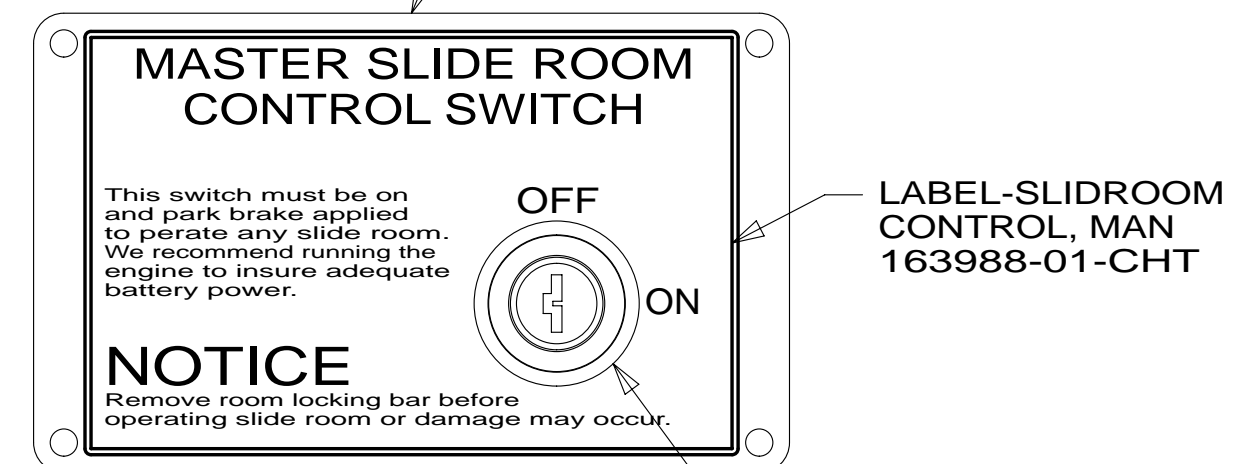
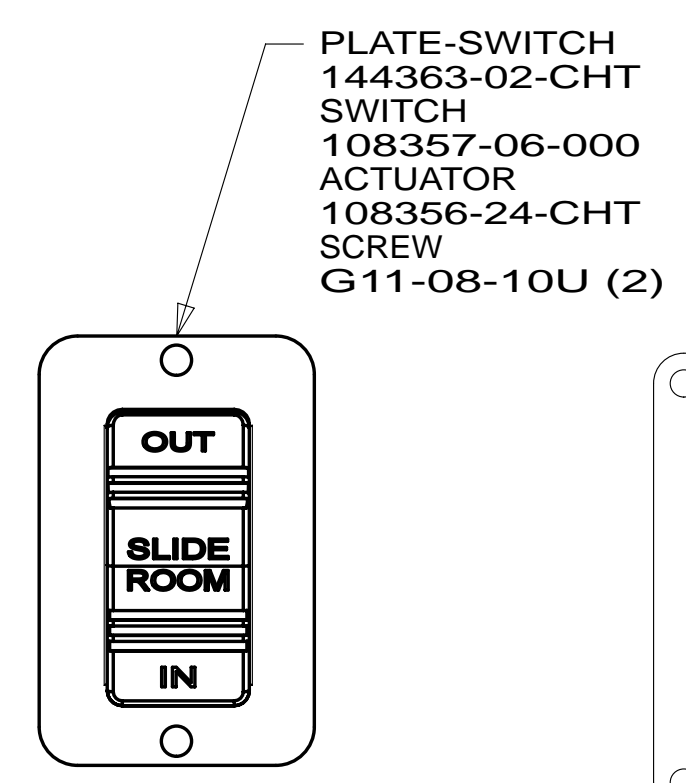
DETAIL DF



DETAIL DK



DETAIL DP 710

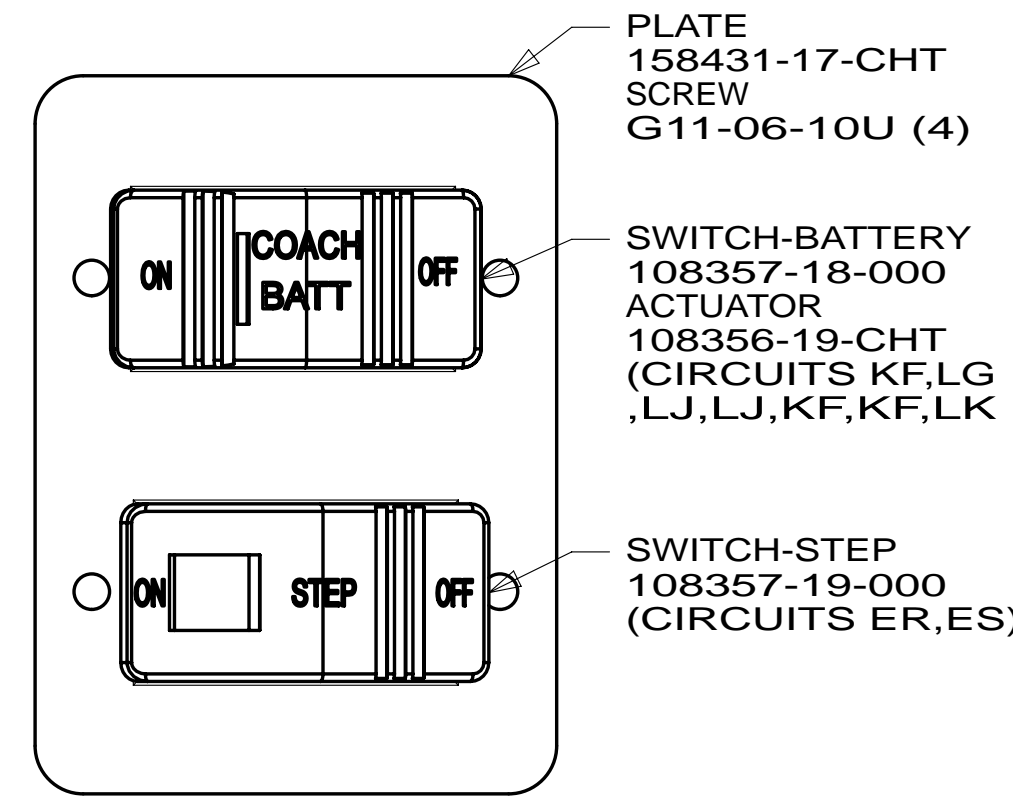


WARNING CRUSH HAZARD. Keep people and objects clear of the inside and the outside of the slideout room when operating. Failure to comply could result in death or serious injury.

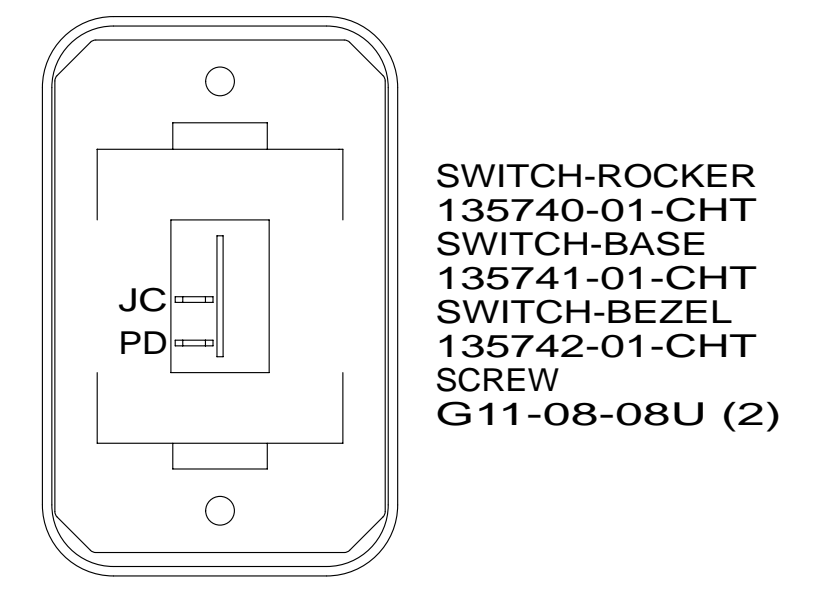
LABEL-WARNING
116549-01-000

SWITCH-KEY, SPST-ILLINOIS LCK
163097-01-000
(CONNECTS TO CIRCUITS DT & ER)

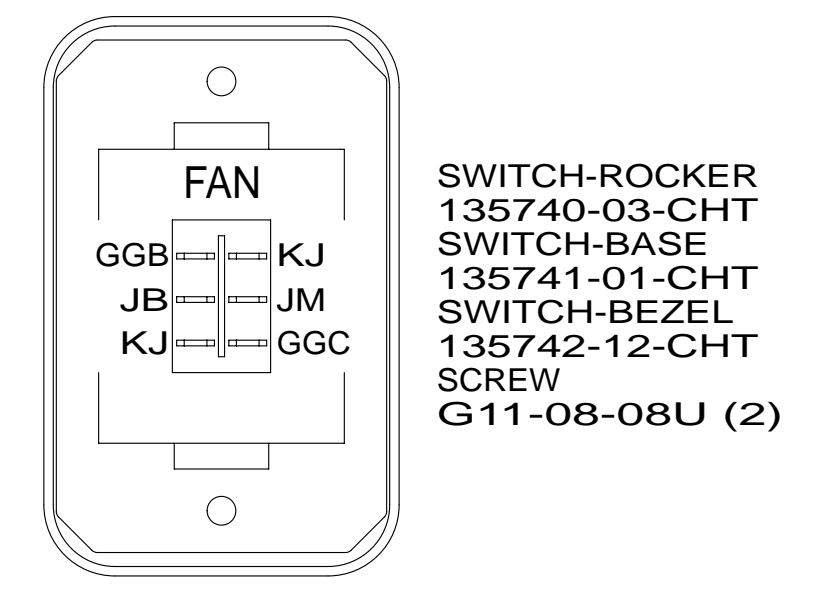
DETAIL DB



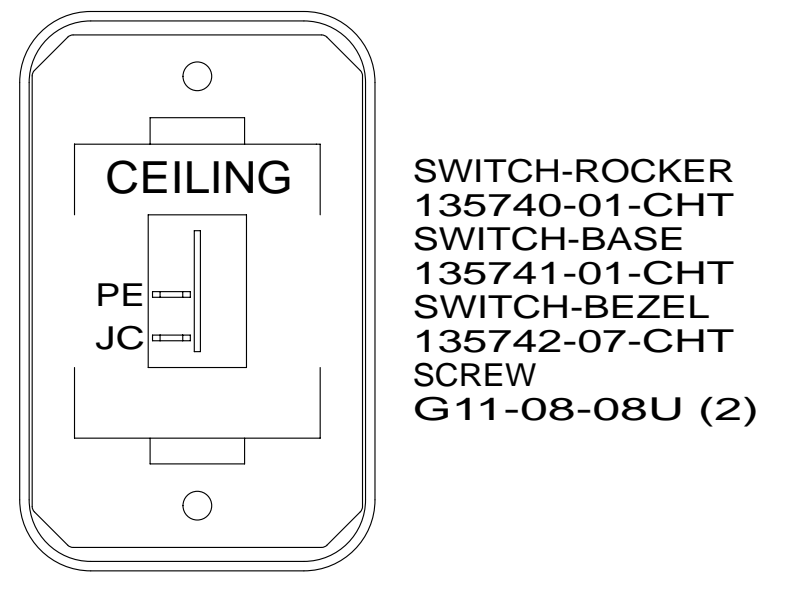
DETAIL DG



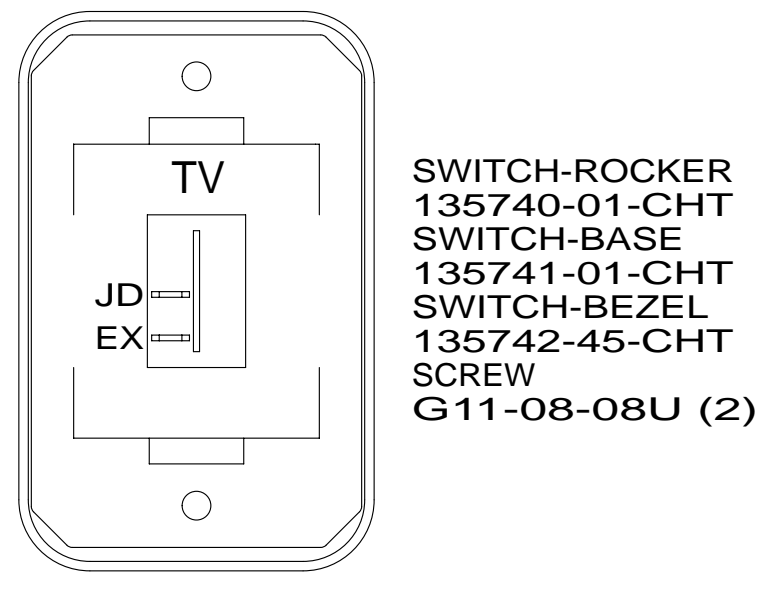
DETAIL DL



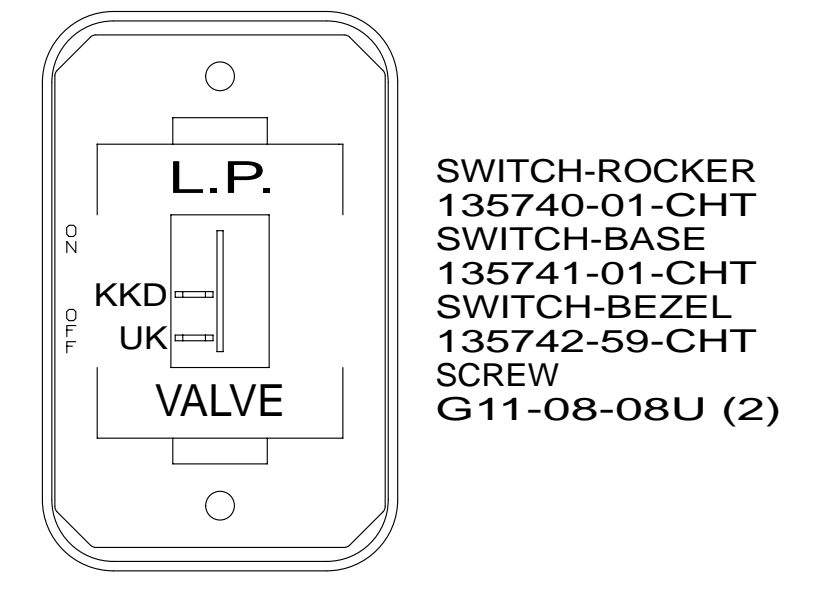
DETAIL DP 316



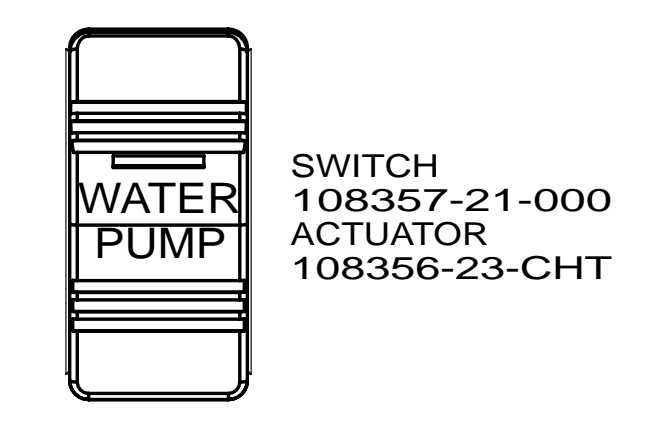
DETAIL DC



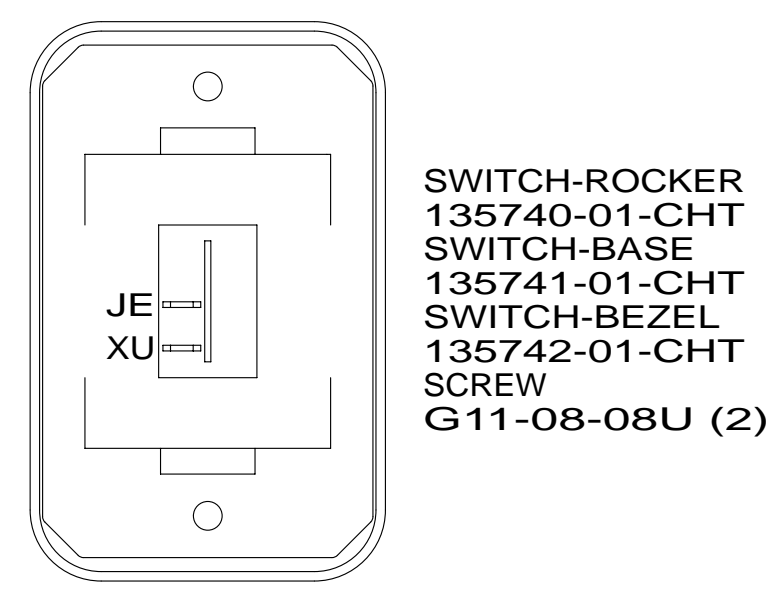
DETAIL DD



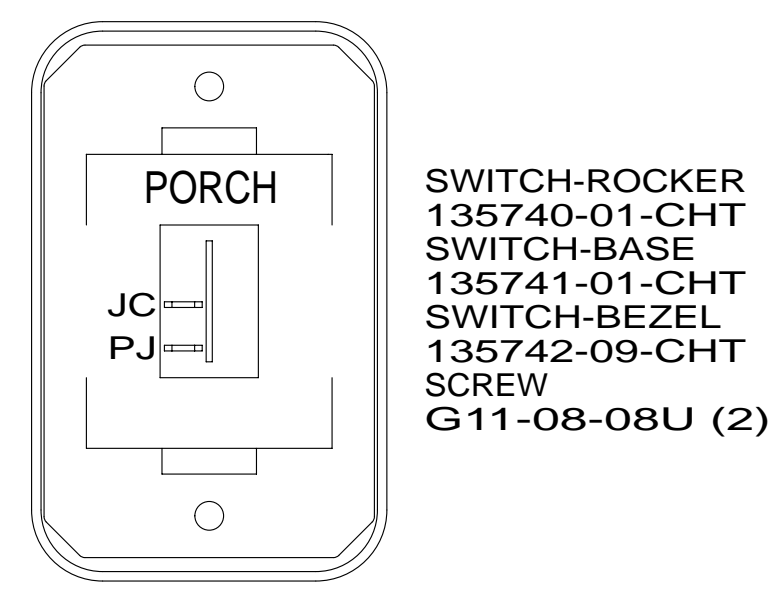
DETAIL DM



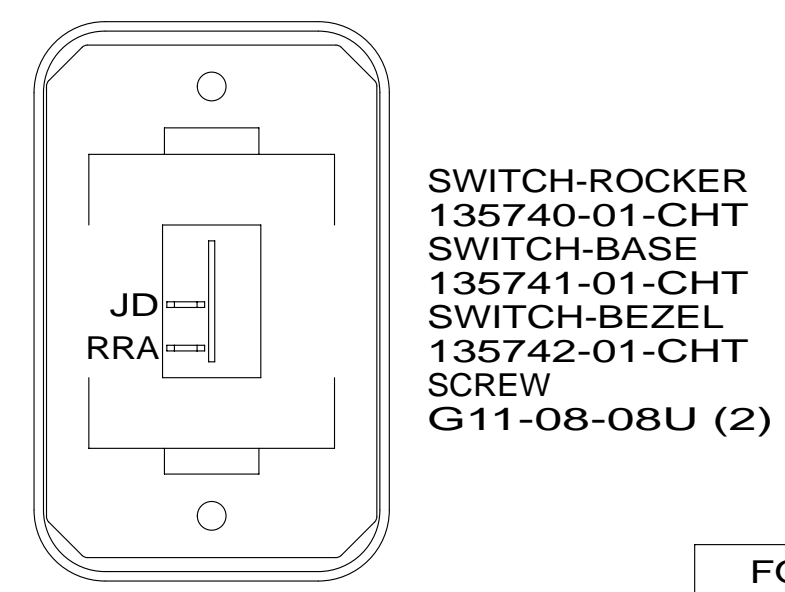
DETAIL DR



DETAIL DH



DETAIL DS



DETAIL DT 808

- 316 SKYLIGHT/ROOF VENT, POWER
- 710 VENT ROOF-POWERED, INSULATED
- 808 808 CABINET, FRONT CAB OVERHEAD
- 23R DRAINAGE SYSTEM/HEAT-PREWIRE
- 52N AWNING - PATIO, ELECTRIC
- 23T DRAINAGE SYSTEM-HEATED
- 265 CODES/STANDARDS-CSA/CMVSS
- 1B1 CODES/STANDARDS USA

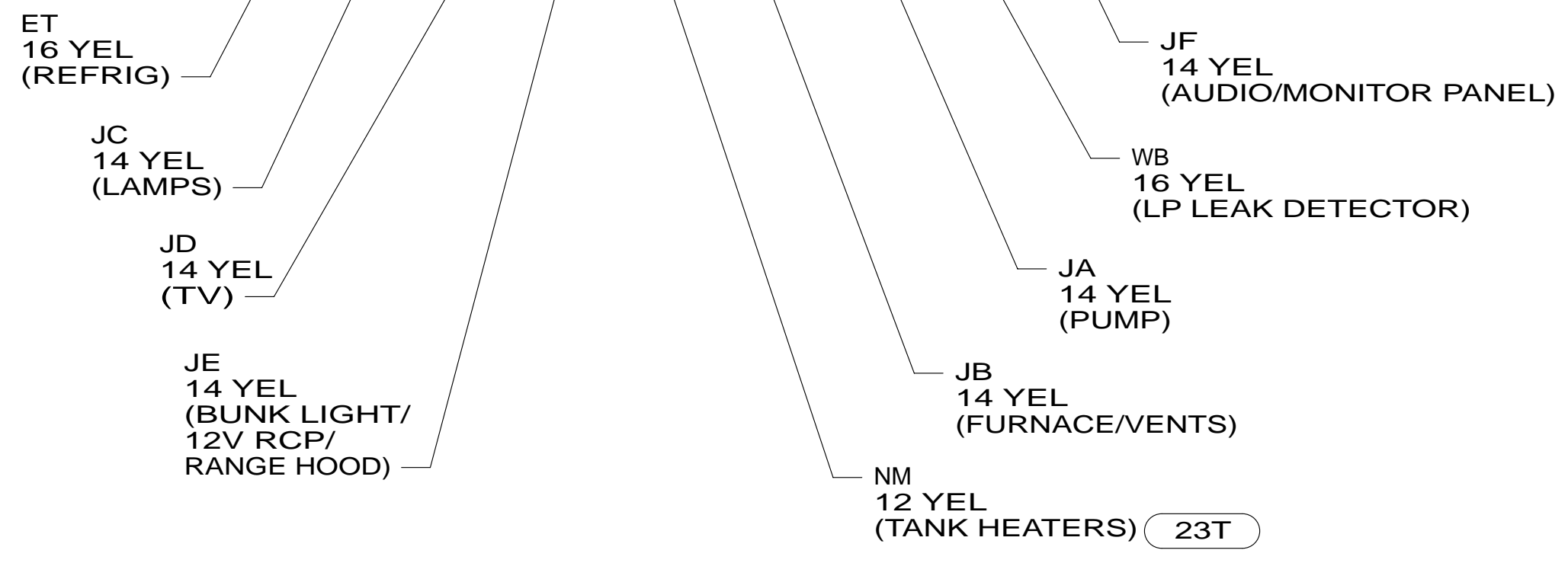
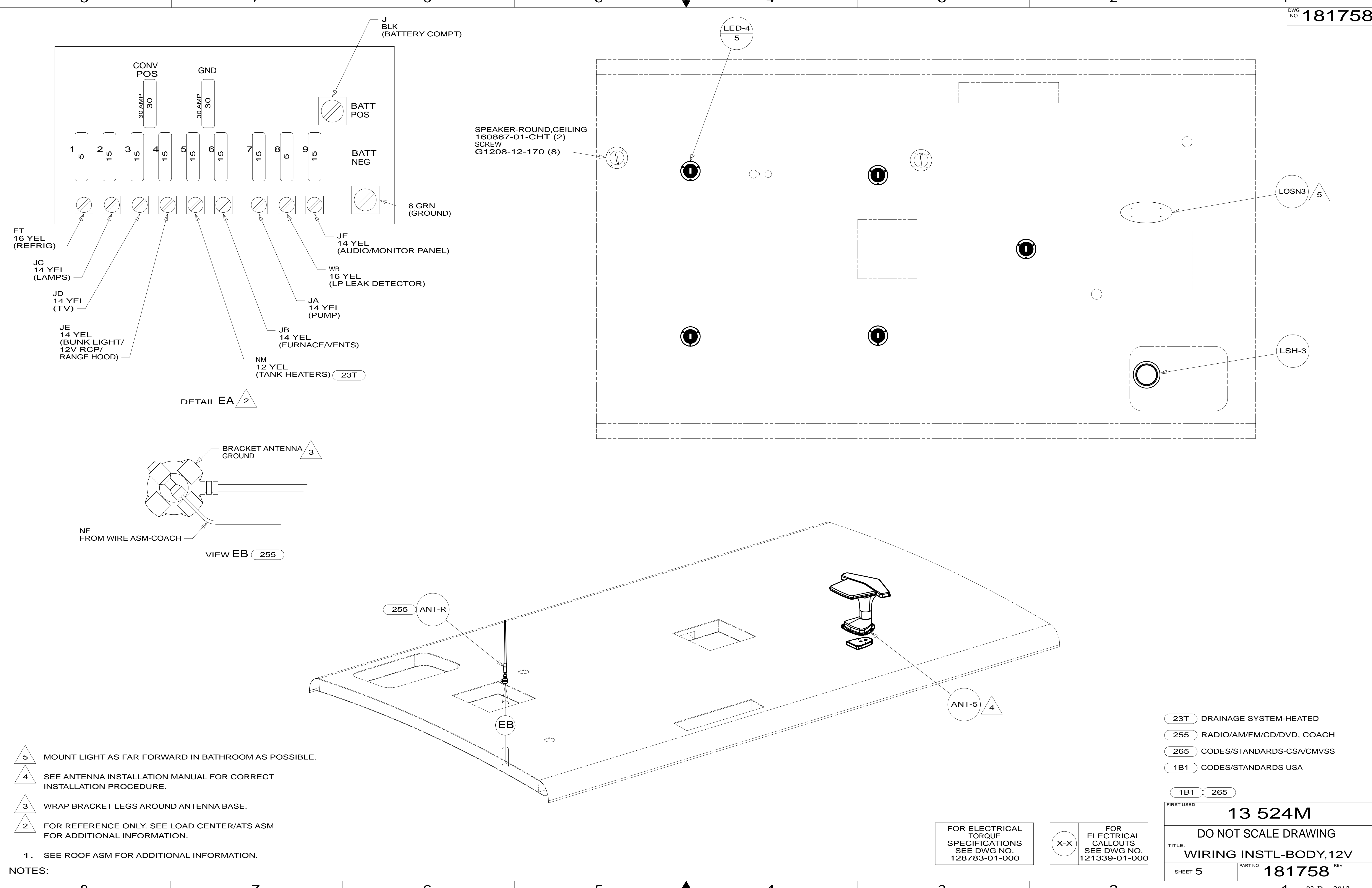
1B1	265
FIRST USED	
13 524M	
DO NOT SCALE DRAWING	
TITLE: WIRING INSTL-BODY, 12V	
SHEET 4	PART NO 181758 REV
03-Dec-2012	

FOR ELECTRICAL TORQUE SPECIFICATIONS SEE DWG NO. 128783-01-000

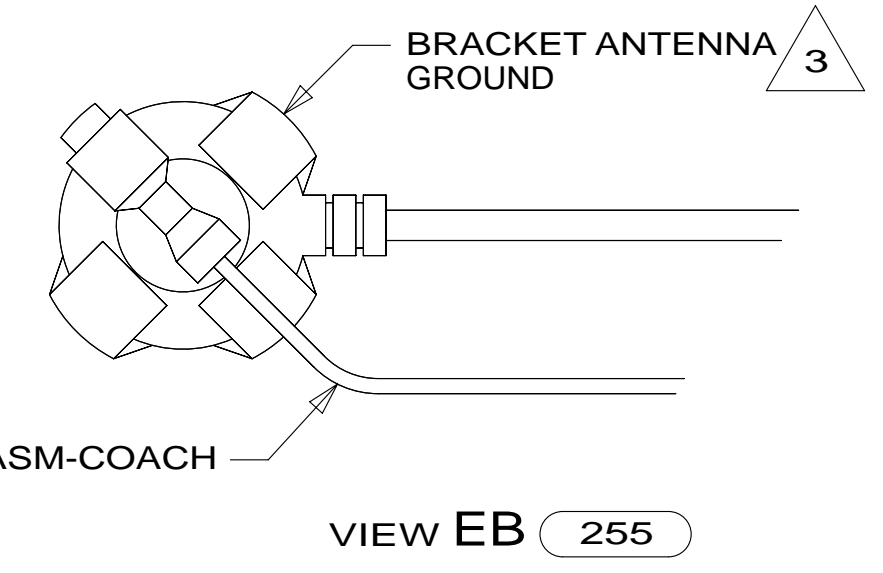
FOR ELECTRICAL CALLOUTS SEE DWG NO. 121339-01-000

NOTES:
1 WITHOUT 23T OR 23R

* 181758 * A



SPEAKER-ROUND, CEILING
160867-01-CHT (2)
SCREW
G1208-12-170 (8)



- NOTES:
- 5 MOUNT LIGHT AS FAR FORWARD IN BATHROOM AS POSSIBLE.
 - 4 SEE ANTENNA INSTALLATION MANUAL FOR CORRECT INSTALLATION PROCEDURE.
 - 3 WRAP BRACKET LEGS AROUND ANTENNA BASE.
 - 2 FOR REFERENCE ONLY. SEE LOAD CENTER/ATS ASM FOR ADDITIONAL INFORMATION.
 - 1. SEE ROOF ASM FOR ADDITIONAL INFORMATION.

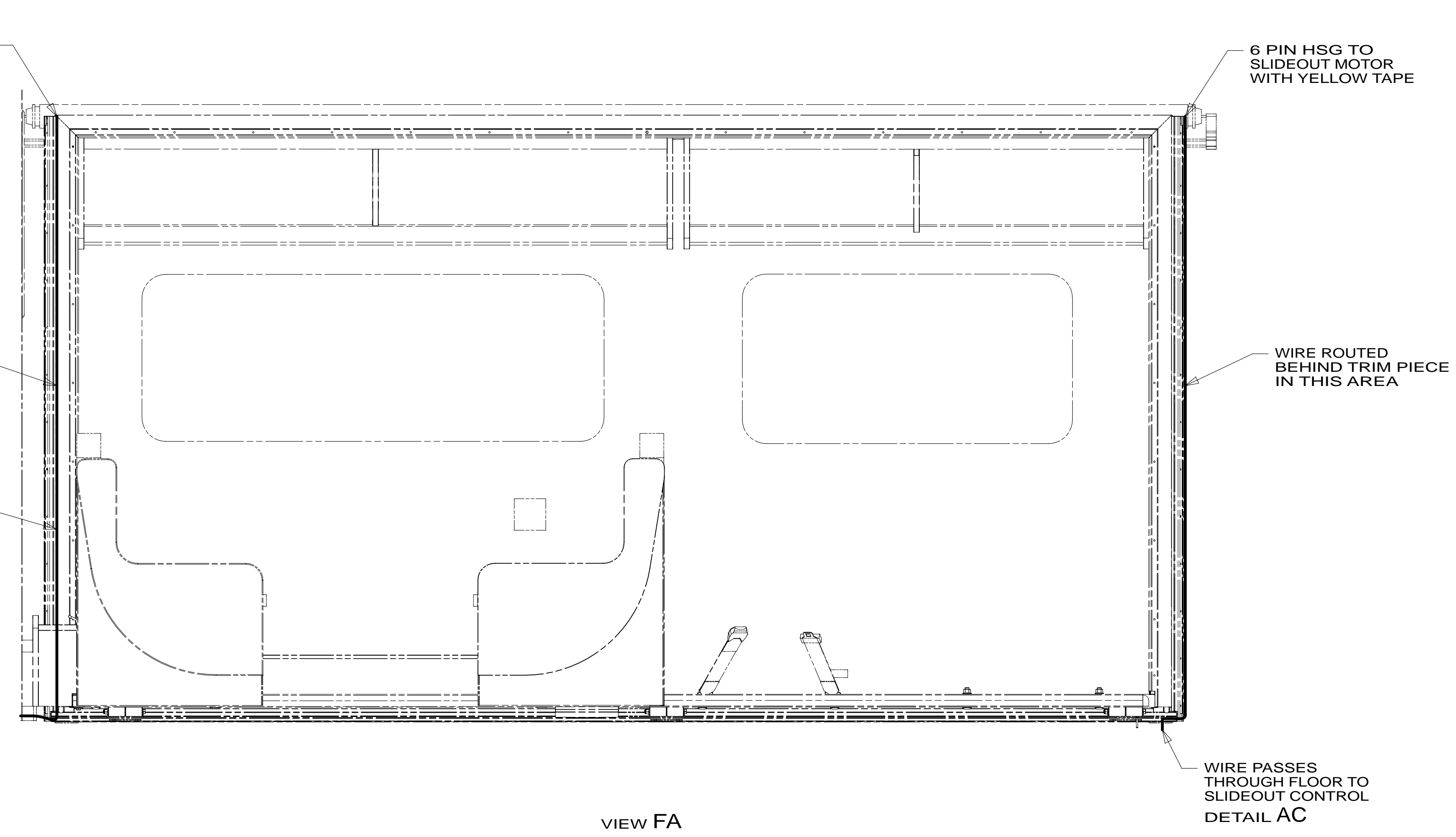
- 23T DRAINAGE SYSTEM-HEATED
- 255 RADIO/AM/FM/CD/DVD, COACH
- 265 CODES/STANDARDS-CSA/CMVSS
- 1B1 CODES/STANDARDS USA

FOR ELECTRICAL TORQUE SPECIFICATIONS SEE DWG NO. 128783-01-000

FOR ELECTRICAL CALLOUTS SEE DWG NO. 121339-01-000

FIRST USED	13 524M	
DO NOT SCALE DRAWING		
TITLE: WIRING INSTL-BODY, 12V		
SHEET 5	PART NO. 181758	REV

* 181758 * A



VIEW FA

265 CODES/STANDARDS-CSA/CMVSS

1B1 CODES/STANDARDS USA

1B1 265

FIRST USED **13 524M**

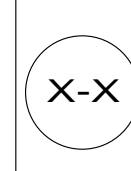
DO NOT SCALE DRAWING

TITLE: **WIRING INSTL-BODY,12V**

SHEET 6 PART NO **181758** REV

FOR ELECTRICAL TORQUE SPECIFICATIONS SEE DWG NO. 128783-01-000

FOR ELECTRICAL CALLOUTS SEE DWG NO. 121339-01-000



*181758 *A