



DANGER

Danger of electrical shock, burns or death. Always remove all power sources before attempting any repair, service or diagnostic work. Power can be present from shore power, generator, inverter or battery. All power sources must be disabled and secured before performing any service.



CAUTION

If you lack the skills, tools or equipment to perform diagnostic or repair work leave such work to an authorized Winnebago Industries dealer or other qualified shop.

DRAWING NO.	MODEL	SHEETS
181742-01	P34B	1,2,4,5
181742-02	P40U	1,2,3,5
181742-03	P36M	1,2,4,5
181742-04	P42E	1,2,3,5

RELEASE	REV/DATE	DWG NO	181742
REV ZONE	REVISION RECORD	DATE	DFT-ORIG

		P34B	P40U	P36M	P42E
RED	1B1	136135-07-072	136135-07-080	136135-07-080	136135-07-090
	265	136136-07-072	136136-07-080	136136-07-080	136136-07-090
GRN	1B1	136135-08-072	136135-08-080	136135-08-080	136135-08-090
	265	136136-08-072	136136-08-080	136136-08-080	136136-08-090
LT BLU	1B1		136135-21-080		136135-21-090
	265		136136-21-080		136136-21-090
YEL	1B1	136131-05-075 ¹	136131-05-055 ¹	136131-05-054 ¹	136131-05-015 ¹
	265	136134-05-075 ¹	136134-05-055 ¹	136134-05-054 ¹	136134-05-015 ¹
GLD	1B1	136131-10-068	136131-10-070	136131-10-054 ¹	136131-10-070
	265	136134-10-068	136134-10-070	136134-10-054 ¹	136134-10-070
GLD-2	1B1	136131-20-068	136131-20-070	136131-20-054 ¹	136131-20-070
	265	136134-20-068	136134-20-070	136134-20-054 ¹	136134-20-070
WHT	1B1	136135-09-051	136135-09-050	136135-09-060 ²	136135-09-065
	265	136136-09-051	136136-09-050	136136-09-060 ²	136136-09-065
BLU	1B1	136131-02-200 ¹	136131-02-090 ¹	136131-02-083 ¹	136131-02-072 ¹
	265	136134-02-200 ¹	136134-02-090 ¹	136134-02-083 ¹	136134-02-072 ¹
BRN	1B1	136131-03-080 ¹	136131-03-120 ¹	136131-03-198 ¹	136131-03-155
	265	136134-03-080 ¹	136134-03-120 ¹	136134-03-198 ¹	136134-03-155

		P34B	P40U	P36M	P42E
PUR	1B1	136131-04-202 ¹	136131-04-065 ¹	136131-04-142 ¹	136131-04-090
	265	136134-04-202 ¹	136134-04-065 ¹	136134-04-142 ¹	136134-04-090
ORG	1B1	136131-16-126	136131-16-140	136131-16-170	136131-16-140
	265	136134-16-126	136134-16-140	136134-16-170	136134-16-140
BLK	1B1	136131-06-075 ¹	136131-06-053 ¹	136131-06-054 ¹	136131-06-040 ¹
	265	136134-06-075 ¹	136134-06-053 ¹	136134-06-054 ¹	136134-06-040 ¹
GRY	1B1		136131-15-055 ¹		136131-15-015 ¹
	265		136134-15-055 ¹		136134-15-015 ¹
INVERTER CHARGER MAIN	1B1	136137-01-065	136137-01-070	136137-01-065	136137-01-053
	265	136138-01-065	136138-01-070	136138-01-065	136138-01-053
INVERTER CHARGER SUB MAIN	1B1	136137-01-065	136137-01-070	136137-01-065	136137-01-053
	265	136138-01-065	136138-01-070	136138-01-065	136138-01-053
CABLE ASM-MAIN,6 AWG		176841-01-030	176841-01-025	176841-01-025	176841-01-045
MAIN GROUND		136145-01-058	136145-01-014	136145-01-065	136145-01-050
ATS GROUND		136145-01-052	136145-01-010	136145-01-050	136145-01-025
INVERTER GROUND		136145-04-009	136145-04-045	136145-04-006	136145-04-025
GENERATOR CABLE ASM		136148-02-104	136148-02-123	136148-02-115	136148-02-088

14C

- 14C FIREPLACE-ELECTRIC
- 265 CODES/STANDARDS-CSA/CMVSS
- 1B1 CODES/STANDARDS USA

1B1 265

WINNEBAGO COPYRIGHT 2013 WINNEBAGO INDUSTRIES, INC.

DFT-ORIG	ORIG. DATE
CHKR	ALL DIMENSIONS ARE IN MILLIMETERS
P.E.	
M.E.	FIRST USED
DSNR	13 P-SERIES

UNSPECIFIED TOLERANCES ARE:

WHOLE DIM (X)	: 3
ONE-PLACE (X.X)	: 1.5
TWO-PLACE (X.XX)	: 0.50
ANGLE	: 1°

THIRD ANGLE PROJECTION

DO NOT SCALE DRAWING REFER TO ES0018 FOR FASTENER TIGHTENING GUIDELINES

TITLE: **LOAD CENTER/ATS ASM**

SHEET 1 OF 5 PART NO **181742** REV

REF: 1 28-May-2013

² SEE DETAIL BD FOR CONNECTOR INSTALLATION.

¹ SEE DETAIL BA FOR CONNECTOR INSTALLATION.

NOTES:

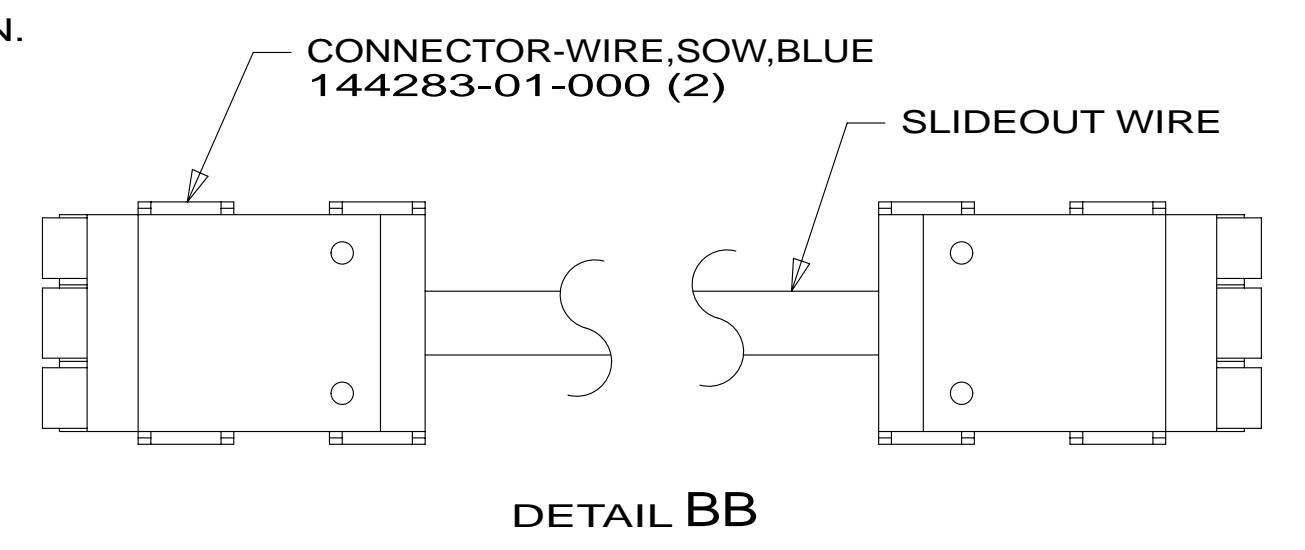
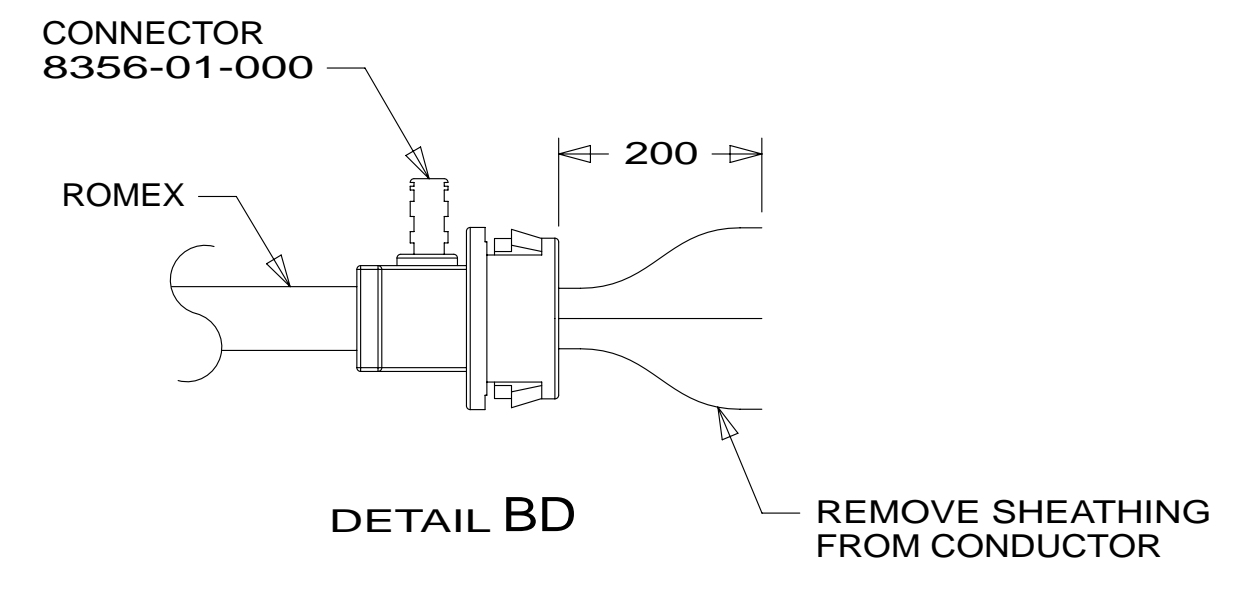
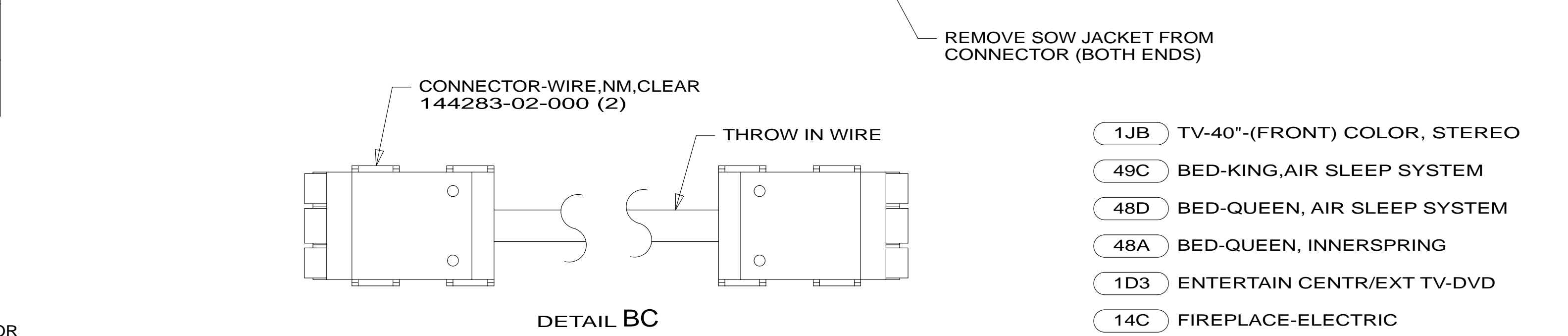
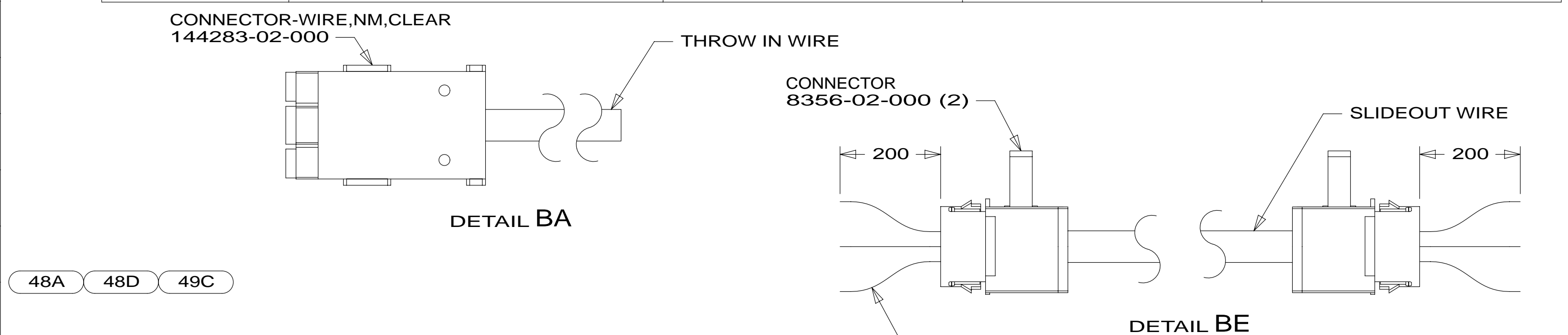
FOR ELECTRICAL TORQUE SPECIFICATIONS SEE DWG NO. 128783-01-000

FOR ELECTRICAL CALLOUTS SEE DWG NO. 121339-01-000

* 181742 * A

		P34B	P40U	P36M	P42E
THROW IN WIRE #1	1B1	136131-02-006	136131-02-070	136131-05-032	136131-02-110
	265	136134-02-006	136134-02-070	136134-05-032	136134-02-110
THROW IN WIRE #2	1B1	136131-04-075		136131-02-015	136131-04-010
	265	136134-04-075		136134-02-015	136134-04-010
THROW IN WIRE #3	1B1	136131-05-025	136131-04-110	136131-02-075	136131-05-023
	265	136134-05-025	136134-04-110	136134-02-075	136134-05-023
THROW IN WIRE #4	1B1	136131-03-015	136131-04-030	136131-10-040	136131-02-010
	265	136134-03-015	136134-04-030	136134-10-040	136134-02-010
THROW IN WIRE #5	1B1	136131-02-006	136131-05-016	136131-20-040	136131-04-010
	265	136134-02-006	136134-05-016	136134-20-040	136134-04-010
THROW IN WIRE #6	1B1	136131-04-045	136131-03-015	136131-02-086	
	265	136134-04-045	136134-03-015	136134-02-086	
THROW IN WIRE #7	1B1		136131-02-006	136131-04-010	
	265		136134-02-006	136134-04-010	
THROW IN WIRE #8	1B1				
	265				
THROW IN WIRE #9	1B1				
	265				
THROW IN WIRE #10	1B1				
	265				
THROW IN WIRE #11	1B1				
	265				
THROW IN WIRE #12	1B1			136135-09-055	
	265			136136-09-055	

	P34B	P40U	P36M	P42E
SLIDEOUT #1 WIRE #1	136151-04-026	136151-03-030	136151-03-027	136151-02-058
SLIDEOUT #1 WIRE #2	136151-05-026	136151-04-030		136151-06-058
SLIDEOUT #1 WIRE #3	136151-03-026	136151-05-030		
SLIDEOUT #1 WIRE #4	136151-06-026	136151-15-030		
SLIDEOUT #2 WIRE #1		136151-04-012		136151-04-015
SLIDEOUT #2 WIRE #2				
SLIDEOUT #3 WIRE #1	136151-02-016	136151-04-016		136151-04-042
SLIDEOUT #3 WIRE #2				136151-15-042
SLIDEOUT #3 WIRE #3				136151-05-042
SLIDEOUT #4 WIRE #1	136151-02-023	136151-02-048	136151-05-025	
SLIDEOUT #4 WIRE #2		136151-06-048	136151-06-025	
SLIDEOUT #4 WIRE #3			136151-02-025	
SLIDEOUT #4 WIRE #4			136151-04-025	
SLIDEOUT #4 WIRE #5			136151-10-025	
SLIDEOUT #4 WIRE #6			136151-20-025	
SLIDEOUT #4 WIRE #7			136152-09-028	



- NOTES:
- SEE WIRING INSTL-TV/DVD FOR ADDITIONAL INFORMATION.
 - SEE DETAIL BD FOR CONNECTOR INSTALLATION.
 - SEE DETAIL BE FOR CONNECTOR INSTALLATION.
 - SEE DETAIL BC FOR CONNECTOR INSTALLATION.
 - SEE DETAIL BB FOR CONNECTOR INSTALLATION.
 - SEE DETAIL BA FOR CONNECTOR INSTALLATION.

- TV-40"-(FRONT) COLOR, STEREO
- BED-KING,AIR SLEEP SYSTEM
- BED-QUEEN, AIR SLEEP SYSTEM
- BED-QUEEN, INNERSPRING
- ENTERTAIN CENTR/EXT TV-DVD
- FIREPLACE-ELECTRIC
- CODES/STANDARDS-CSA/CMVSS
- CODES/STANDARDS-USA

FOR ELECTRICAL TORQUE SPECIFICATIONS SEE DWG NO. 128783-01-000

FOR ELECTRICAL CALLOUTS SEE DWG NO. 121339-01-000

FIRST USED

13 P-SERIES

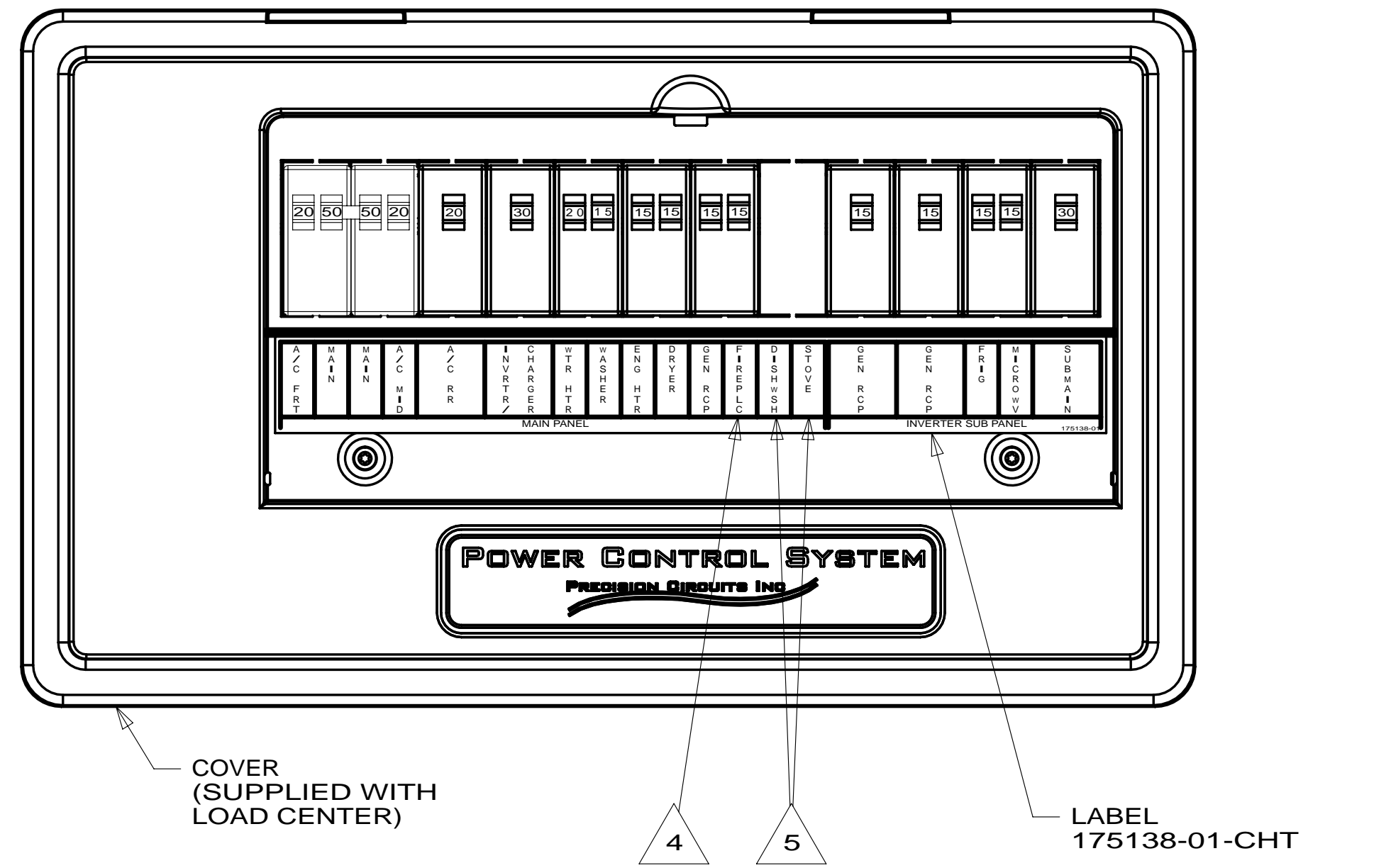
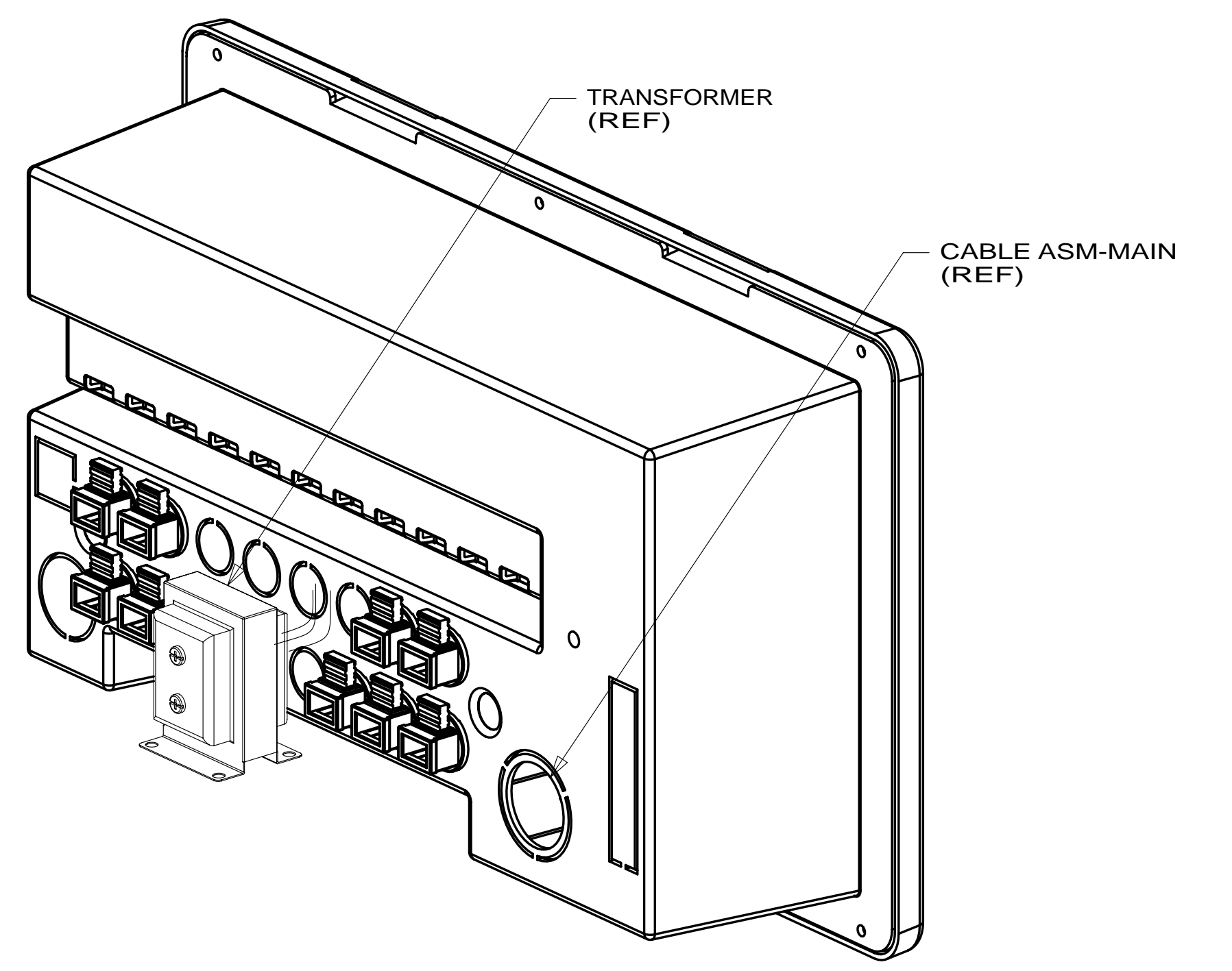
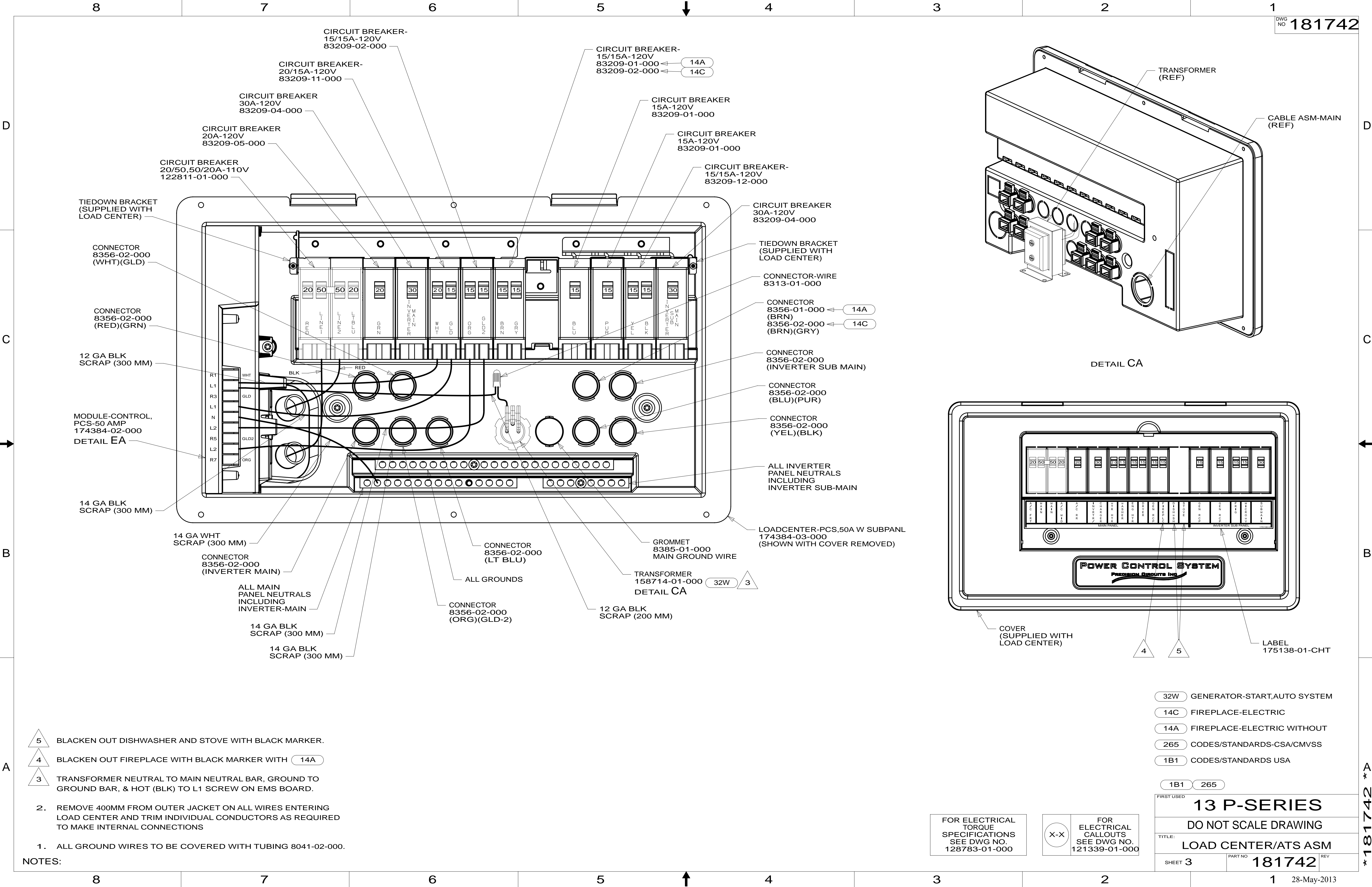
DO NOT SCALE DRAWING

TITLE: **LOAD CENTER/ATS ASM**

SHEET 2 PART NO **181742** REV

28-May-2013

* 181742 *



- 5 BLACKEN OUT DISHWASHER AND STOVE WITH BLACK MARKER.
- 4 BLACKEN OUT FIREPLACE WITH BLACK MARKER WITH 14A
- 3 TRANSFORMER NEUTRAL TO MAIN NEUTRAL BAR, GROUND TO GROUND BAR, & HOT (BLK) TO L1 SCREW ON EMS BOARD.

2. REMOVE 400MM FROM OUTER JACKET ON ALL WIRES ENTERING LOAD CENTER AND TRIM INDIVIDUAL CONDUCTORS AS REQUIRED TO MAKE INTERNAL CONNECTIONS
1. ALL GROUND WIRES TO BE COVERED WITH TUBING 8041-02-000.

NOTES:

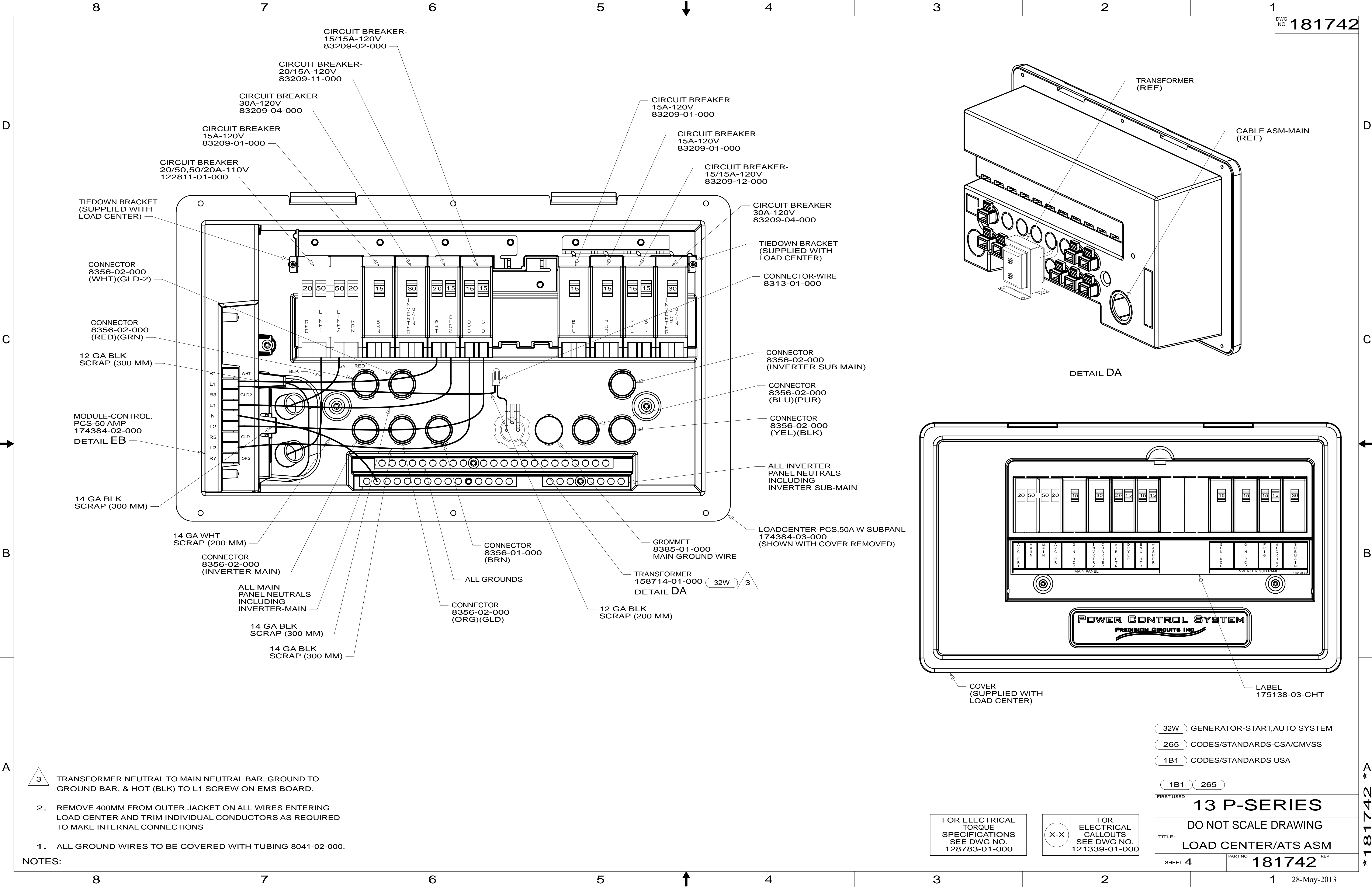
- 32W GENERATOR-START,AUTO SYSTEM
- 14C FIREPLACE-ELECTRIC
- 14A FIREPLACE-ELECTRIC WITHOUT
- 265 CODES/STANDARDS-CSA/CMVSS
- 1B1 CODES/STANDARDS USA

FIRST USED	13 P-SERIES
TITLE:	DO NOT SCALE DRAWING
SHEET 3	LOAD CENTER/ATS ASM
PART NO	181742
REV	

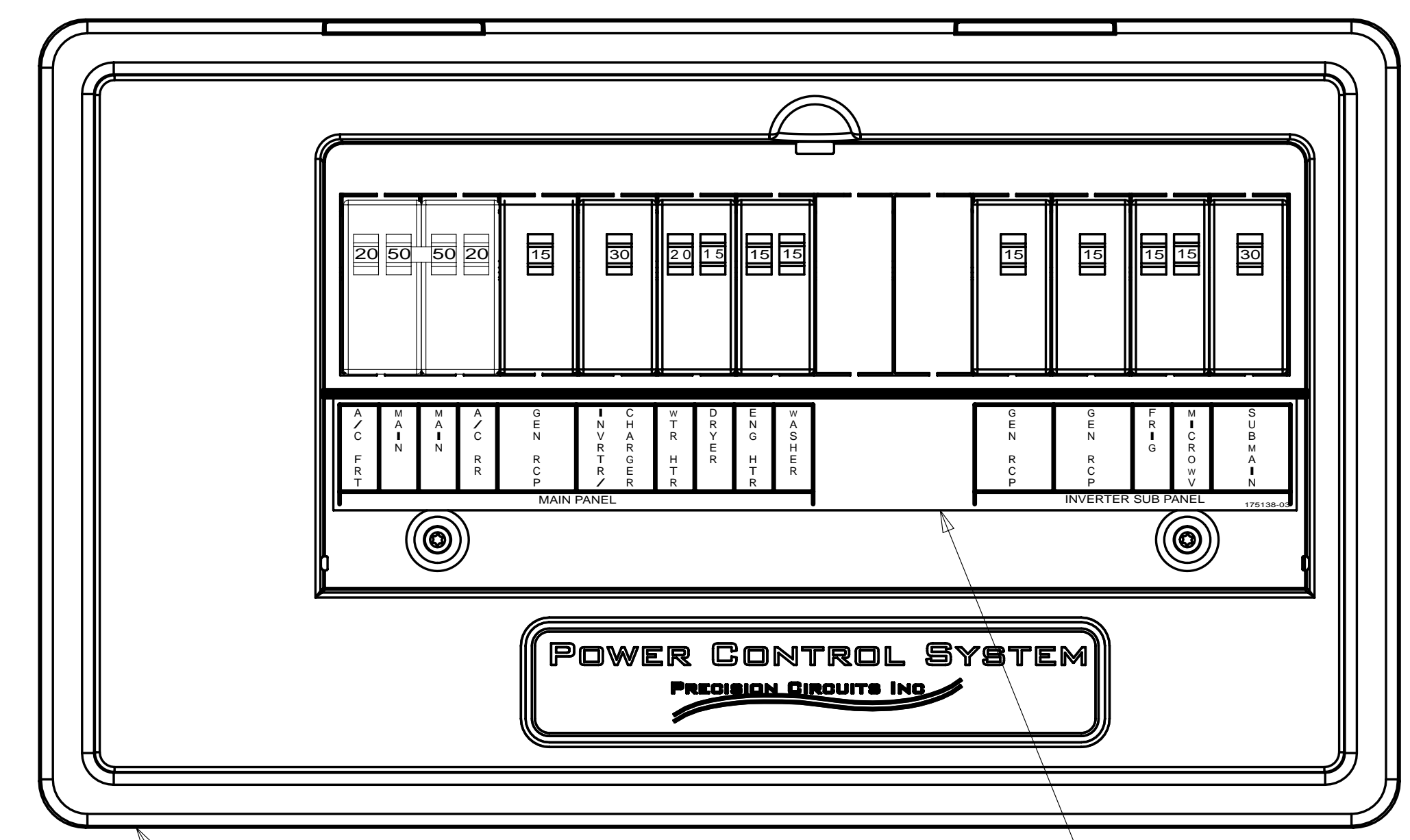
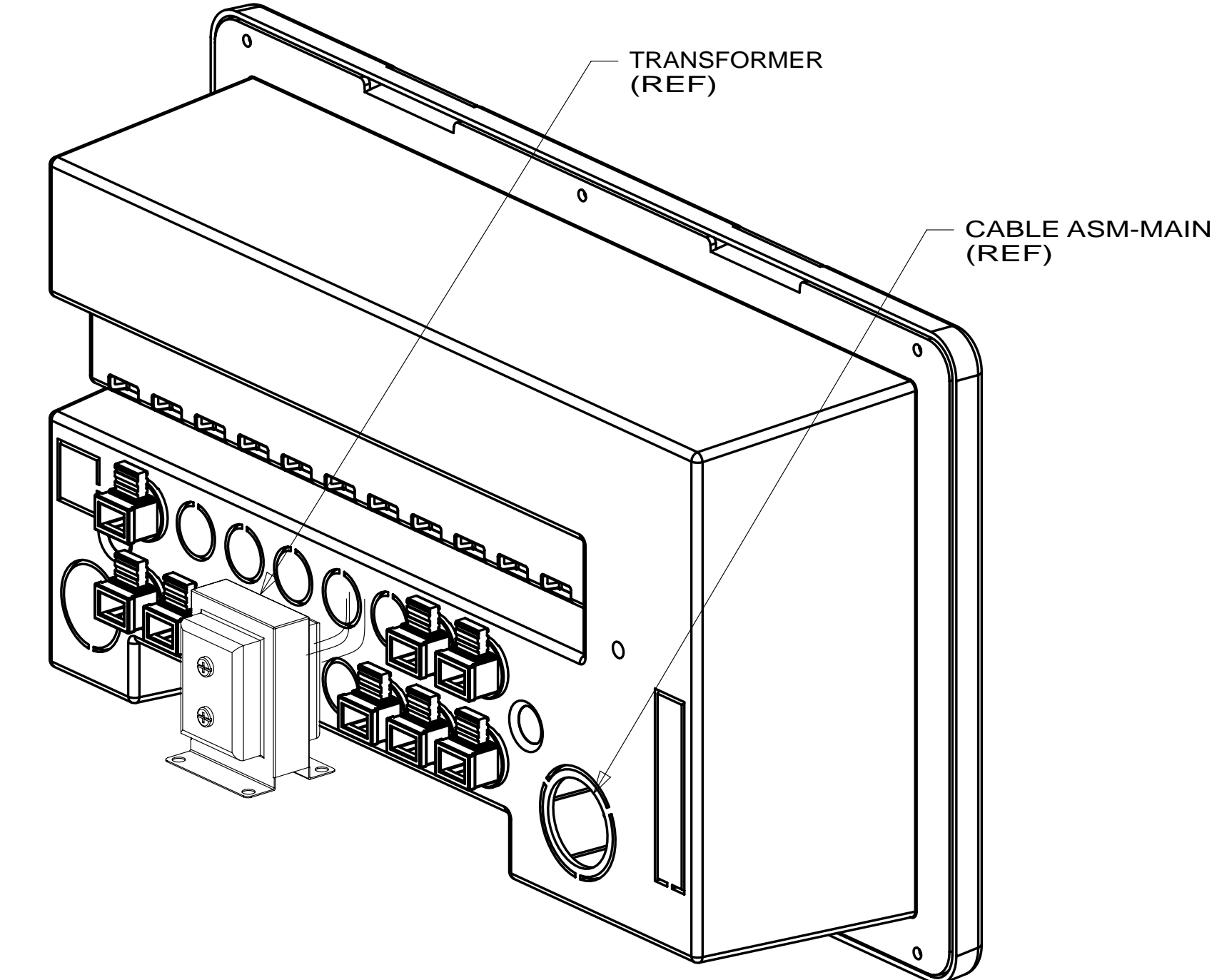
FOR ELECTRICAL TORQUE SPECIFICATIONS SEE DWG NO. 128783-01-000

FOR ELECTRICAL CALLOUTS SEE DWG NO. 121339-01-000

* 181742 *



- CIRCUIT BREAKER- 15/15A-120V 83209-02-000
- CIRCUIT BREAKER- 20/15A-120V 83209-11-000
- CIRCUIT BREAKER 30A-120V 83209-04-000
- CIRCUIT BREAKER 15A-120V 83209-01-000
- CIRCUIT BREAKER 20/50,50/20A-110V 122811-01-000
- TIEDOWN BRACKET (SUPPLIED WITH LOAD CENTER)
- CONNECTOR 8356-02-000 (WHT)(GLD-2)
- CONNECTOR 8356-02-000 (RED)(GRN)
- 12 GA BLK SCRAP (300 MM)
- MODULE-CONTROL, PCS-50 AMP 174384-02-000 DETAIL EB
- 14 GA BLK SCRAP (300 MM)
- 14 GA WHT SCRAP (200 MM)
- CONNECTOR 8356-02-000 (INVERTER MAIN)
- ALL MAIN PANEL NEUTRALS INCLUDING INVERTER-MAIN
- 14 GA BLK SCRAP (300 MM)
- 14 GA BLK SCRAP (300 MM)
- CIRCUIT BREAKER 15A-120V 83209-01-000
- CIRCUIT BREAKER 15A-120V 83209-01-000
- CIRCUIT BREAKER 15/15A-120V 83209-12-000
- CIRCUIT BREAKER 30A-120V 83209-04-000
- TIEDOWN BRACKET (SUPPLIED WITH LOAD CENTER)
- CONNECTOR-WIRE 8313-01-000
- CONNECTOR 8356-02-000 (INVERTER SUB MAIN)
- CONNECTOR 8356-02-000 (BLU)(PUR)
- CONNECTOR 8356-02-000 (YEL)(BLK)
- ALL INVERTER PANEL NEUTRALS INCLUDING INVERTER SUB-MAIN
- LOADCENTER-PCS,50A W SUBPANEL 174384-03-000 (SHOWN WITH COVER REMOVED)
- GROMMET 8385-01-000 MAIN GROUND WIRE
- TRANSFORMER 158714-01-000 32W 3 DETAIL DA
- ALL GROUNDS
- CONNECTOR 8356-01-000 (BRN)
- CONNECTOR 8356-02-000 (ORG)(GLD)
- 12 GA BLK SCRAP (200 MM)



- NOTES:
- ALL GROUND WIRES TO BE COVERED WITH TUBING 8041-02-000.
 - REMOVE 400MM FROM OUTER JACKET ON ALL WIRES ENTERING LOAD CENTER AND TRIM INDIVIDUAL CONDUCTORS AS REQUIRED TO MAKE INTERNAL CONNECTIONS
 - TRANSFORMER NEUTRAL TO MAIN NEUTRAL BAR, GROUND TO GROUND BAR, & HOT (BLK) TO L1 SCREW ON EMS BOARD.

FOR ELECTRICAL TORQUE SPECIFICATIONS SEE DWG NO. 128783-01-000

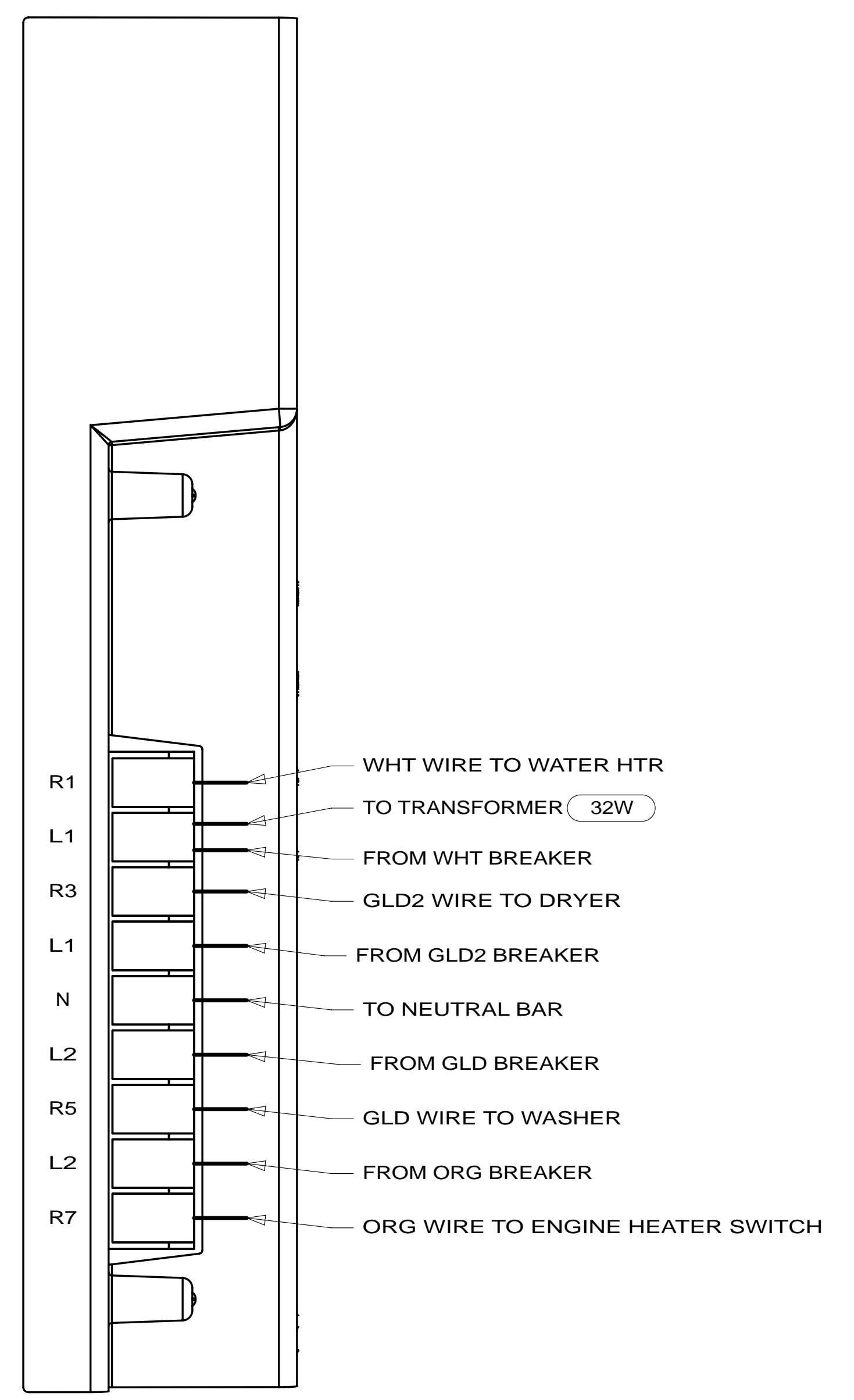
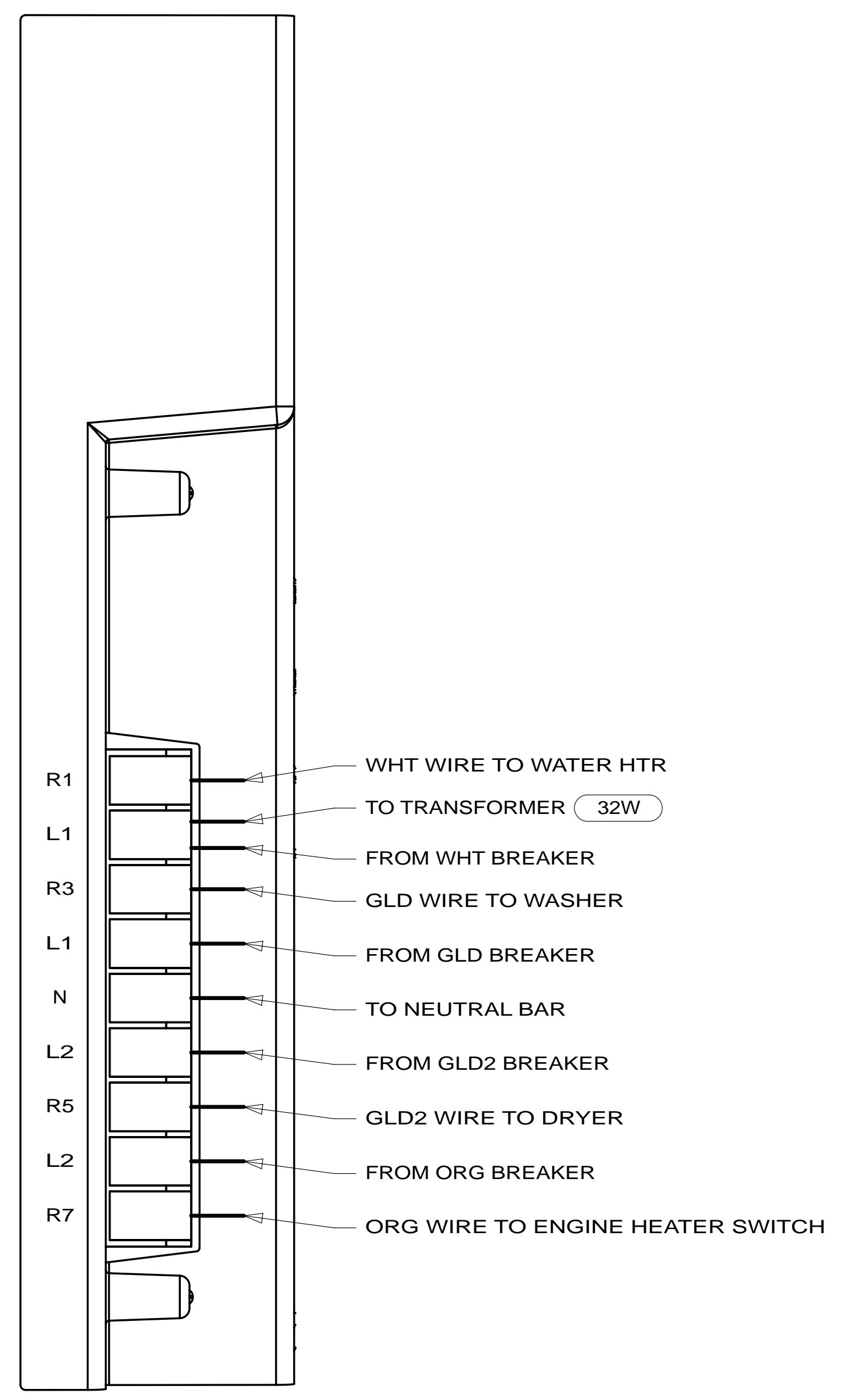
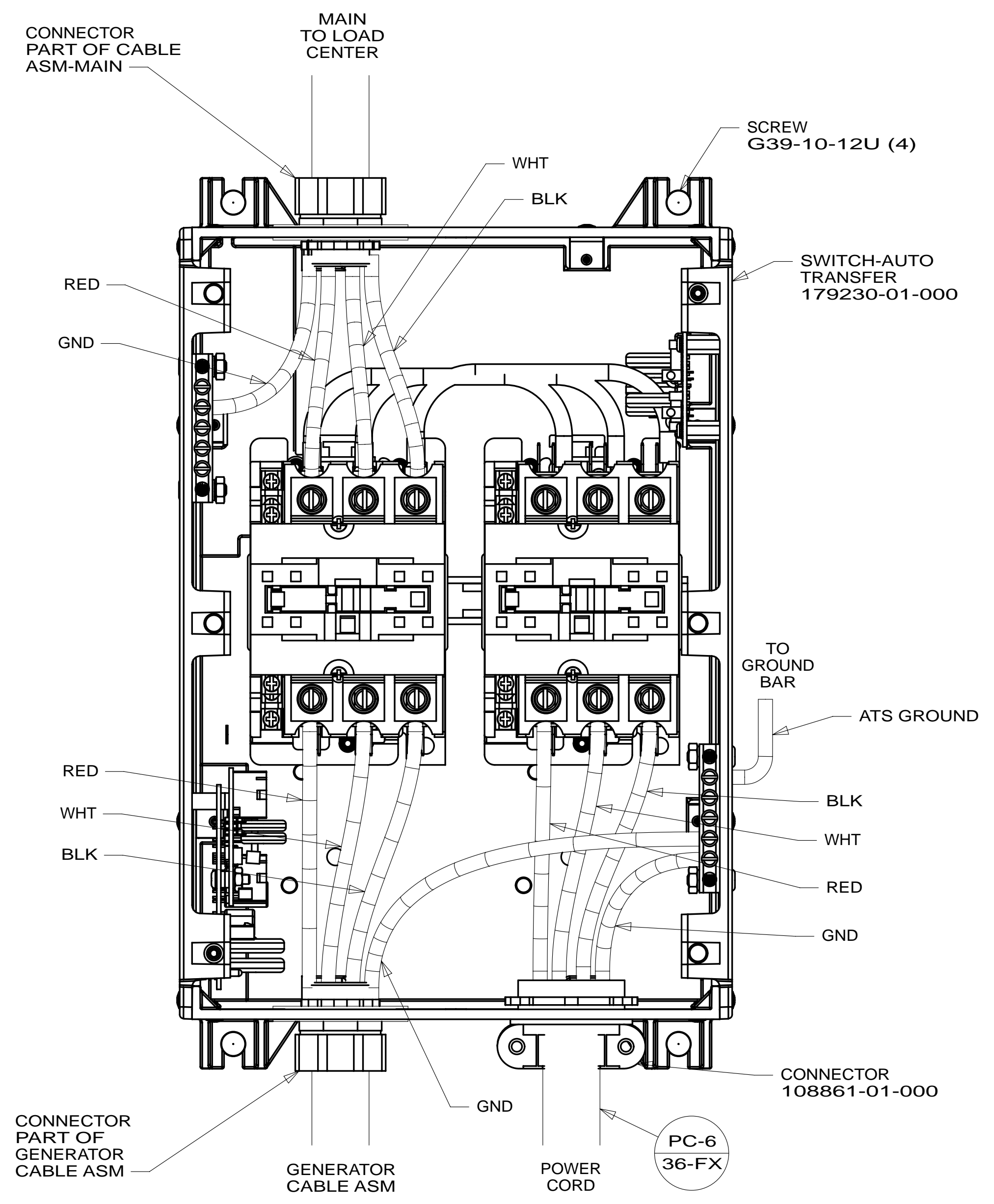
X-X

FOR ELECTRICAL CALLOUTS SEE DWG NO. 121339-01-000

- 32W GENERATOR-START,AUTO SYSTEM
- 265 CODES/STANDARDS-CSA/CMVSS
- 1B1 CODES/STANDARDS USA

FIRST USED	1B1	265
13 P-SERIES		
DO NOT SCALE DRAWING		
TITLE:	LOAD CENTER/ATS ASM	
SHEET 4	PART NO	181742
	REV	

* 181742 *



DETAIL EA

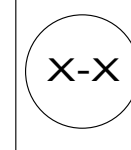
DETAIL EB

- 32W GENERATOR-START,AUTO SYSTEM
- 265 CODES/STANDARDS-CSA/CMVSS
- 1B1 CODES/STANDARDS USA

1B1	265
FIRST USED	
13 P-SERIES	
DO NOT SCALE DRAWING	
TITLE: LOAD CENTER/ATS ASM	
SHEET 5	PART NO. 181742 REV
28-May-2013	

FOR ELECTRICAL TORQUE SPECIFICATIONS SEE DWG NO. 128783-01-000

FOR ELECTRICAL CALLOUTS SEE DWG NO. 121339-01-000



* 181742 * A