



DANGER

Danger of electrical shock, burns or death. Always remove all power sources before attempting any repair, service or diagnostic work. Power can be present from shore power, generator, inverter or battery. All power sources must be disabled and secured before performing any service.



CAUTION

If you lack the skills, tools or equipment to perform diagnostic or repair work leave such work to an authorized Winnebago Industries dealer or other qualified shop.

DRAWING NO.	MODELS	SHEETS
181720-01	P40U	1,2,3,5
181720-02	P36M	1,3,4,5
181720-03	P42E	1,3,6,8
181720-04	P34B	1,3,5,7

RELEASE	REV/DATE	DWG NO	181720
REV ZONE	REVISION RECORD	DATE	DFT-ORIG

	P40U	P36M	P42E	P34B
CABLE ASM (YEL) FROM COACH BATTERY TO COACH STUD,JUMP START	175207-52-086	175207-52-068	175207-52-090	175207-52-063
CABLE ASM (YEL) FROM STUD,JUMP START TO COACH SIDE OF AUX START SOLENOID	175207-52-009	175207-52-009	175207-52-004	175207-52-009
CABLE ASM (BLK) FROM STUD,JUMP START "GROUND" TO FRAME RAIL GROUND	175211-01-005	175211-01-005	175211-01-008	175211-01-005
CABLE ASM (ORG) FROM COACH BATTERY TO INVERTER FUSE	175207-62-010	175207-62-010	175207-62-010	175207-62-010
CABLE ASM (ORG) FROM INVERTER FUSE TO INVERTER POSITIVE TERMINAL	175207-62-040	175207-62-023	175207-62-032	175207-62-015
CABLE ASM (BLK) FROM BATTERY TO INVERTER NEGATIVE TERMINAL	175211-01-044	175211-01-028	175211-01-034	175211-01-021
CABLE ASM (BLK) FROM COACH BATTERY TO FRAME RAIL GROUND	175211-02-072	175211-02-060	175211-02-085	175211-02-055
CABLE ASM (PUR) FROM CHASSIS BATTERY DISCONNECT TO CHASSIS ISOLATED STUD	175207-15-005	175207-15-005	175207-15-004	175207-15-005
CABLE ASM (BLU) FROM CHASSIS ISOLATED STUD TO LEVELING SYSTEM PUMP	141416-26-125	141416-26-108	141416-26-129	141416-26-103
CABLE ASM (BLK) FROM LEVELING SYSTEM TO FRAME RAIL GROUND	133567-11-005	133567-11-005	133567-11-005	133567-11-005
CABLE ASM (GRN) FROM COACH BAT DISC RELAY TO PASS THRU STUD IN FRONT LEFT COMPT	175207-42-130	175207-42-115	175207-42-135	175207-42-110
CABLE ASM (GRN) FROM PASS THRU STUD IN FRONT LEFT COMPT TO GENERATOR	175207-42-031	175207-42-031	175207-42-031	175207-42-031
CABLE ASM (BLK) FROM GENERATOR TO FRAME RAIL GROUND BOLT	175211-02-020	175211-02-020	175211-02-020	175211-02-020
CABLE ASM (YEL) JUMPER BETWEEN POSITIVE POSTS ON COACH BATTERY	141417-52-004 (15L 79W) 141417-51-002 (2) (79W) 141417-51-002 (4) (15L)	141417-52-004 (15L 79W) 141417-51-002 (2) (79W) 141417-51-002 (4) (15L)	141417-52-004 (15L 79W) 141417-51-002 (2) (79W) 141417-51-002 (4) (15L)	141417-52-004 (15L 79W) 141417-51-002 (2) (79W) 141417-51-002 (4) (15L)
CABLE ASM (BLK) JUMPER BETWEEN NEGATIVE POSTS ON COACH BATTERY	133568-12-004 (15L 79W) 133568-11-002 (2) (79W) 133568-11-002 (4) (15L)	133568-12-004 (15L 79W) 133568-11-002 (2) (79W) 133568-11-002 (4) (15L)	133568-12-004 (15L 79W) 133568-11-002 (2) (79W) 133568-11-002 (4) (15L)	133568-12-004 (15L 79W) 133568-11-002 (2) (79W) 133568-11-002 (4) (15L)
CABLE ASM (RED) JUMPER BETWEEN POSITIVE POSTS IN LEFT FRONT COMPT	141417-32-002	141417-32-002	141417-32-002	141417-32-002
CABLE ASM-TEMPERATURE,BATTERY	175385-03-000	175385-03-000	175385-03-000	175385-03-000
CABLE ASM (RED) FROM CHASSIS BATTERY TO CHASSIS SIDE OF AUX START SOLENOID	175207-35-008	175207-35-008	175207-35-008	175207-35-008

- 2
- 2
- 1
- 1
- 2
- 3
- 2
- 3
- 3

- 79W REFRIGERATOR-4 DOOR
- 15L RESIDENTIAL REFRIGERATOR PKG
- 265 CODES/STANDARDS-CSA/CMVSS
- 1B1 CODES/STANDARDS USA
- 1B1 265

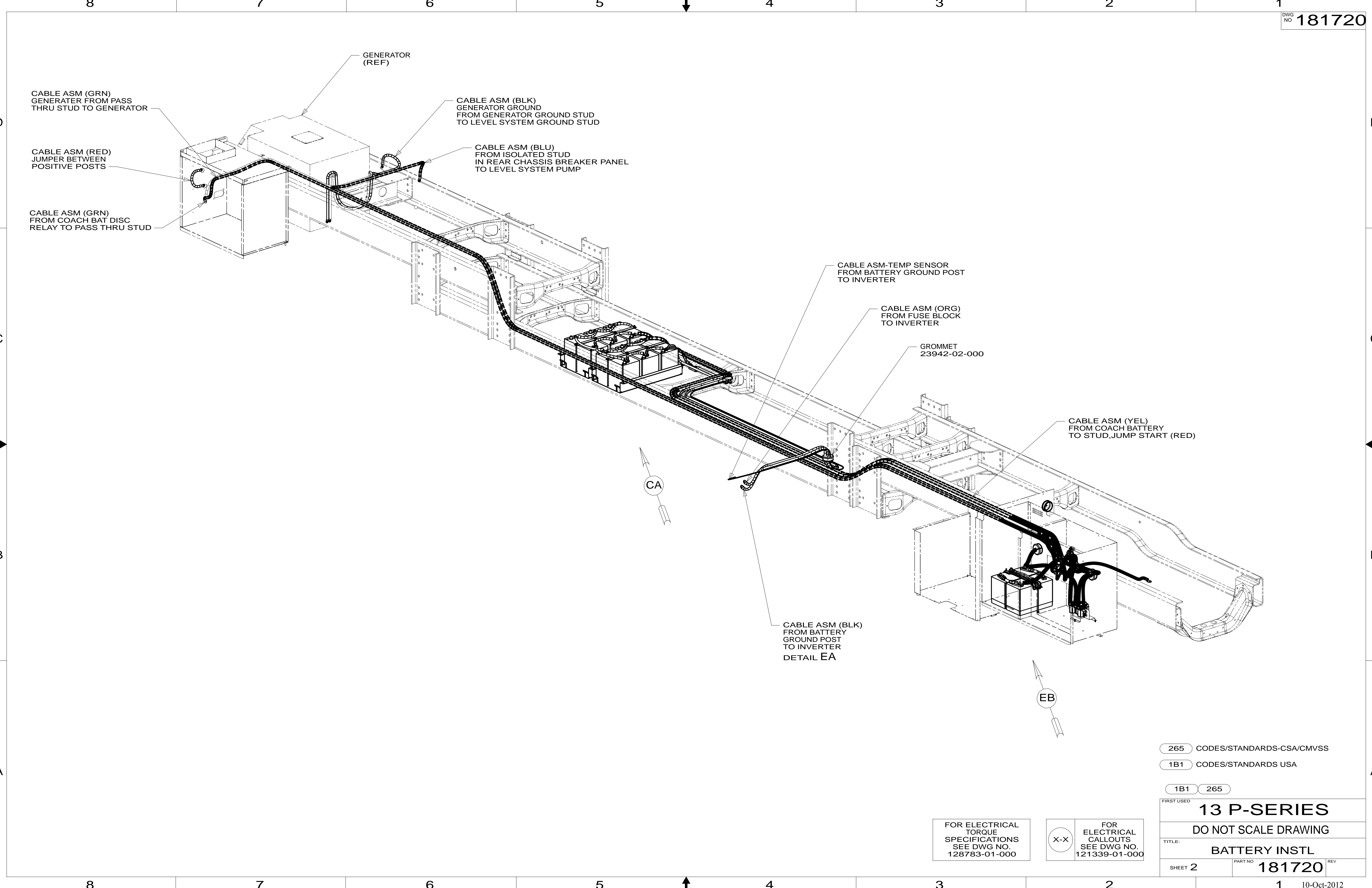
WINNEBAGO COPYRIGHT 2011 WINNEBAGO INDUSTRIES, INC.

DFT-ORIG	ORIG. DATE
CHKR	ALL DIMENSIONS ARE IN MILLIMETERS
P.E.	
M.E.	FIRST USED
DSNR	13 P-SERIES
UNSPECIFIED TOLERANCES ARE:	
WHOLE DIM (X)	: 3
ONE-PLACE (X.X)	: 1.5
TWO-PLACE (X.XX)	: 0.50
ANGLE	: 1'
THIRD ANGLE PROJECTION	
DO NOT SCALE DRAWING	REFER TO ES0018 FOR FASTENER TIGHTENING GUIDELINES
TITLE: BATTERY INSTL	
SHEET 1 OF 8	PART NO 181720 REV

- NOTES:
- 4 STANDARDIZED LENGTH, CHECK WITH ENGINEERING BEFORE CHANGING.
 - 3 SEE WIRING INSTL-FRONT END FOR ADDITIONAL INFORMATION.
 - 2 SEE WIRING INSTL-CHASSIS FOR ADDITIONAL INFORMATION.
 - 1 SEE LEVELING SYSTEM INSTL FOR ADDITIONAL INFORMATION.

FOR ELECTRICAL TORQUE SPECIFICATIONS SEE DWG NO. 128783-01-000

FOR ELECTRICAL CALLOUTS SEE DWG NO. 121339-01-000



265 CODES/STANDARDS-CSA/CMVSS

1B1 CODES/STANDARDS USA

1B1 265

FIRST USED **13 P-SERIES**

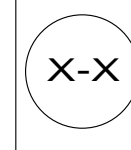
DO NOT SCALE DRAWING

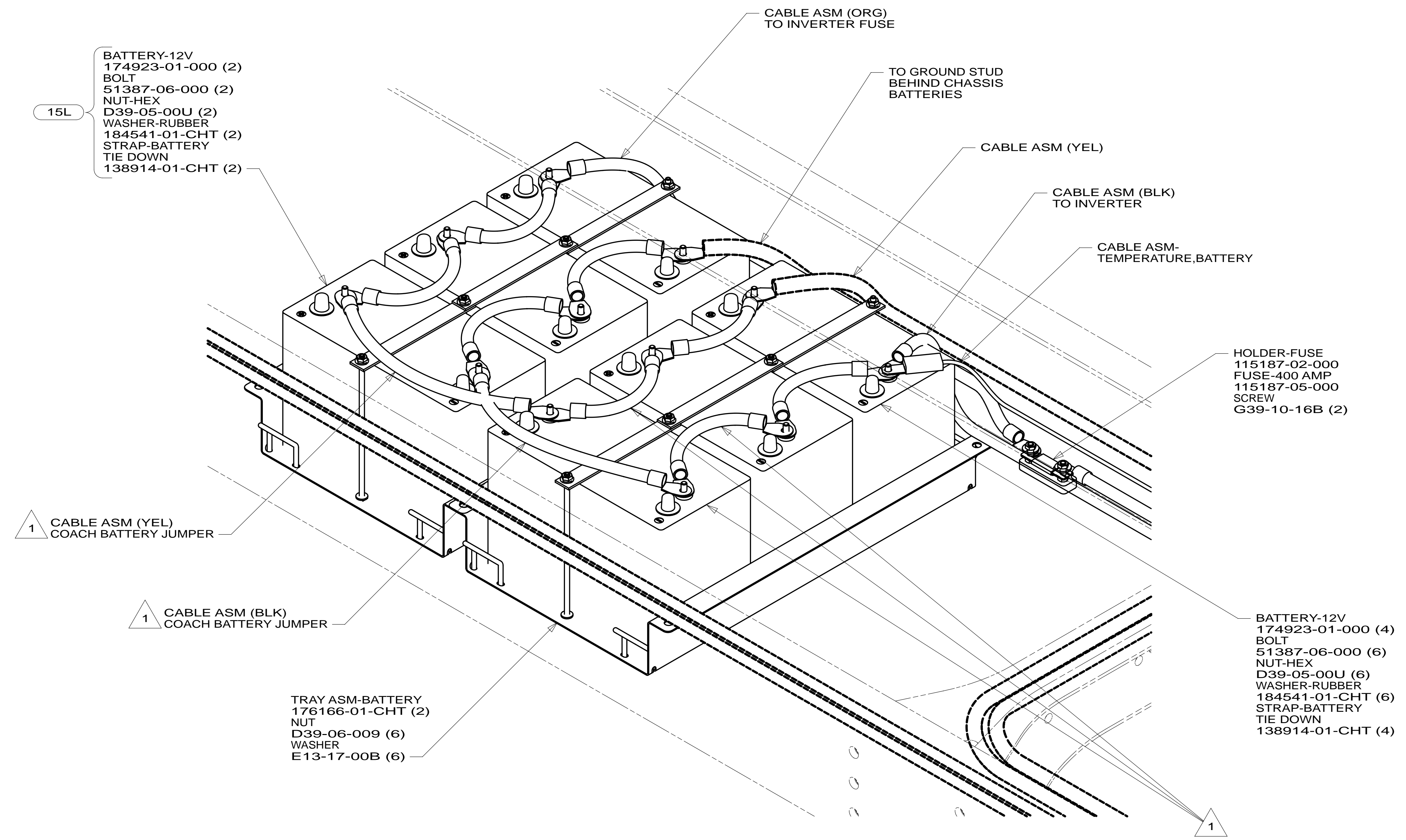
TITLE: **BATTERY INSTL**

SHEET 2 PART NO **181720** REV

FOR ELECTRICAL TORQUE SPECIFICATIONS SEE DWG NO. 128783-01-000

FOR ELECTRICAL CALLOUTS SEE DWG NO. 121339-01-000





VIEW CA

1 CONNECT JUMPER CABLES TO MIDDLE BATTERIES WITH **13X**

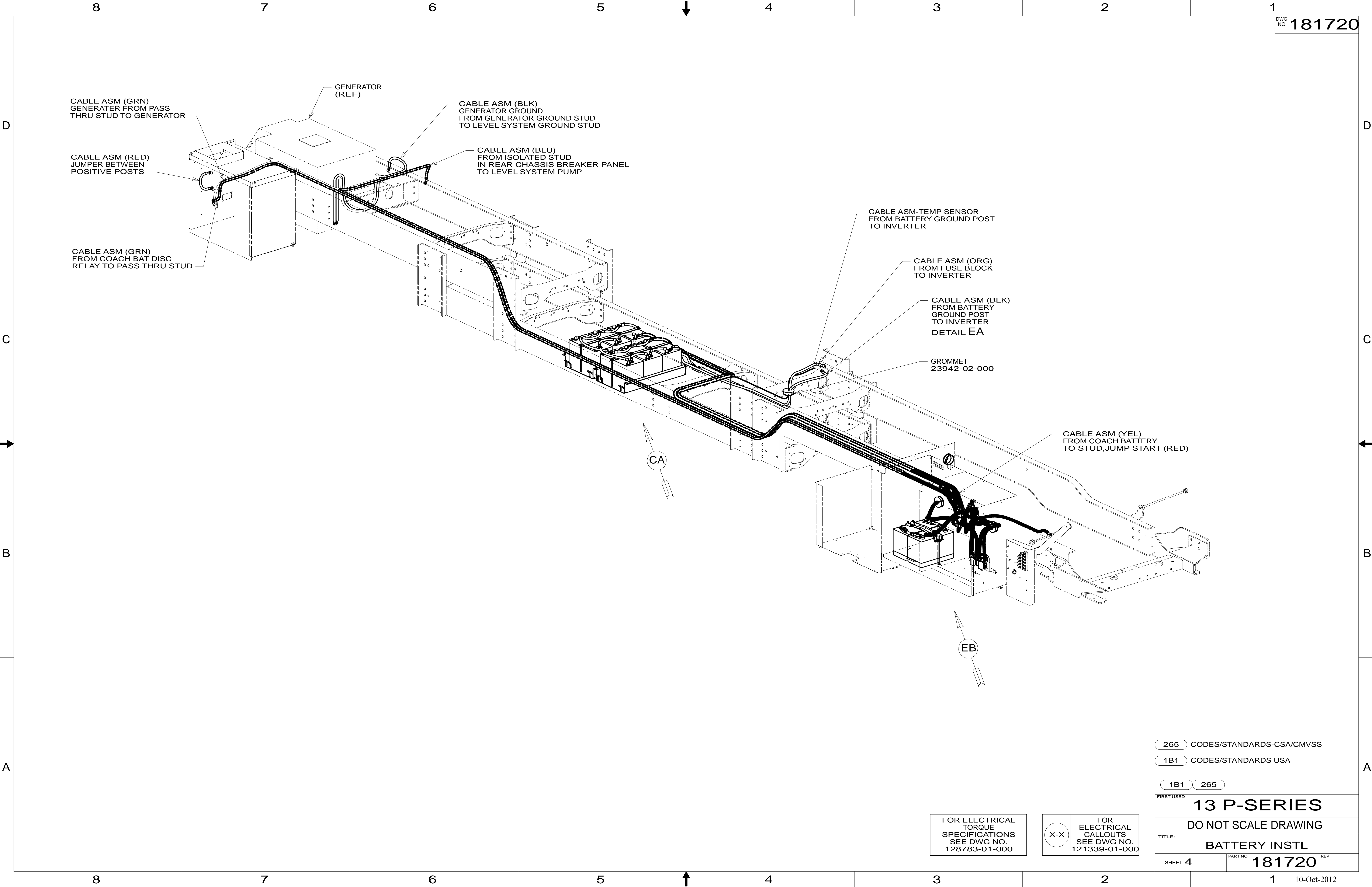
NOTES:

FOR ELECTRICAL
TORQUE
SPECIFICATIONS
SEE DWG NO.
128783-01-000

X-X
FOR
ELECTRICAL
CALLOUTS
SEE DWG NO.
121339-01-000

- 15L** RESIDENTIAL REFRIGERATOR PKG
- 265** CODES/STANDARDS-CSA/CMVSS
- 1B1** CODES/STANDARDS USA

1B1	265
FIRST USED	
13 P-SERIES	
DO NOT SCALE DRAWING	
TITLE:	
BATTERY INSTL	
SHEET 3	PART NO 181720 REV



265 CODES/STANDARDS-CSA/CMVSS

1B1 CODES/STANDARDS USA

1B1 265

FIRST USED **13 P-SERIES**

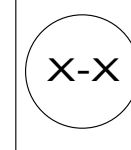
DO NOT SCALE DRAWING

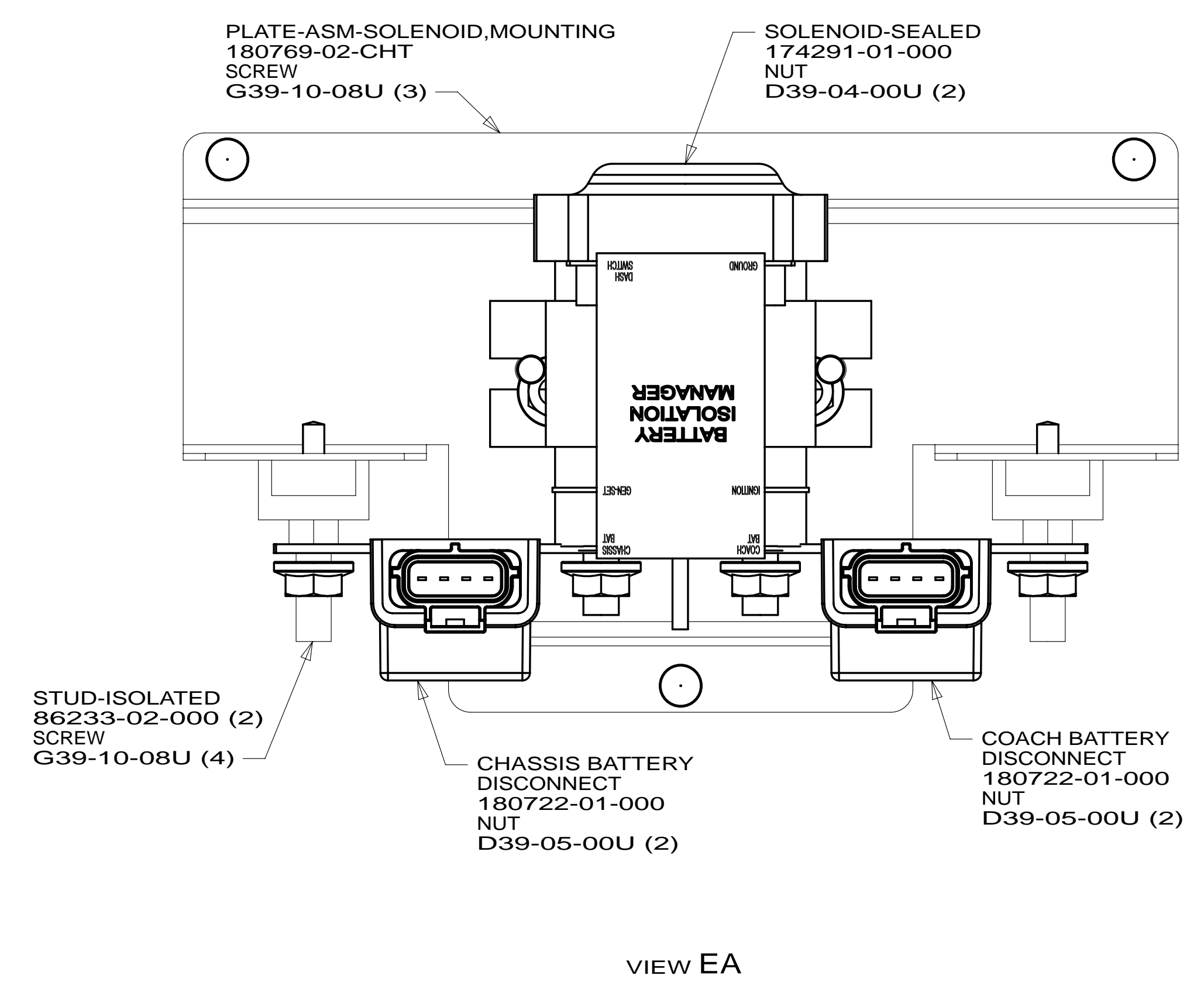
TITLE: **BATTERY INSTL**

SHEET 4 PART NO **181720** REV

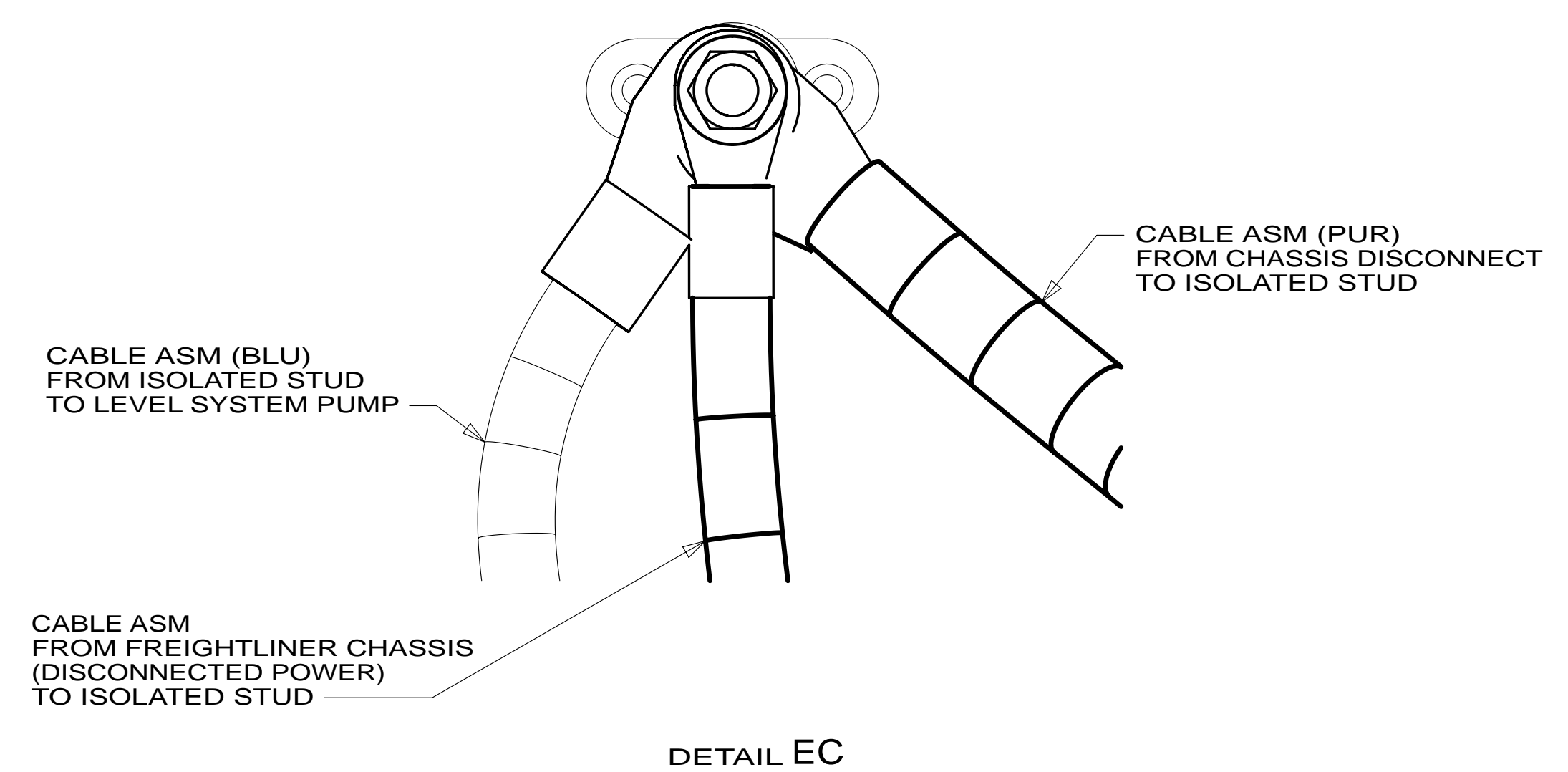
FOR ELECTRICAL TORQUE SPECIFICATIONS SEE DWG NO. 128783-01-000

FOR ELECTRICAL CALLOUTS SEE DWG NO. 121339-01-000

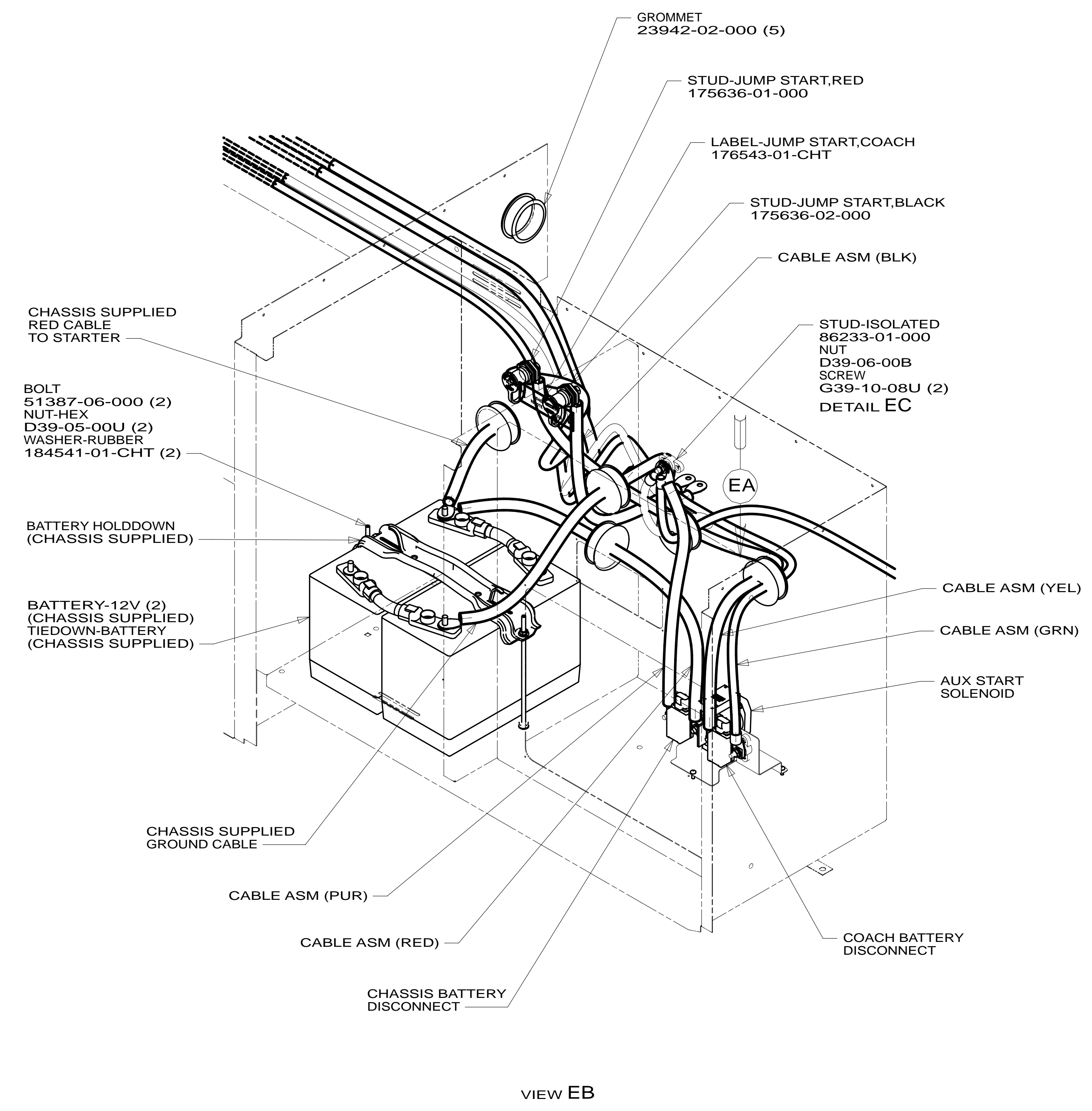




VIEW EA



DETAIL EC



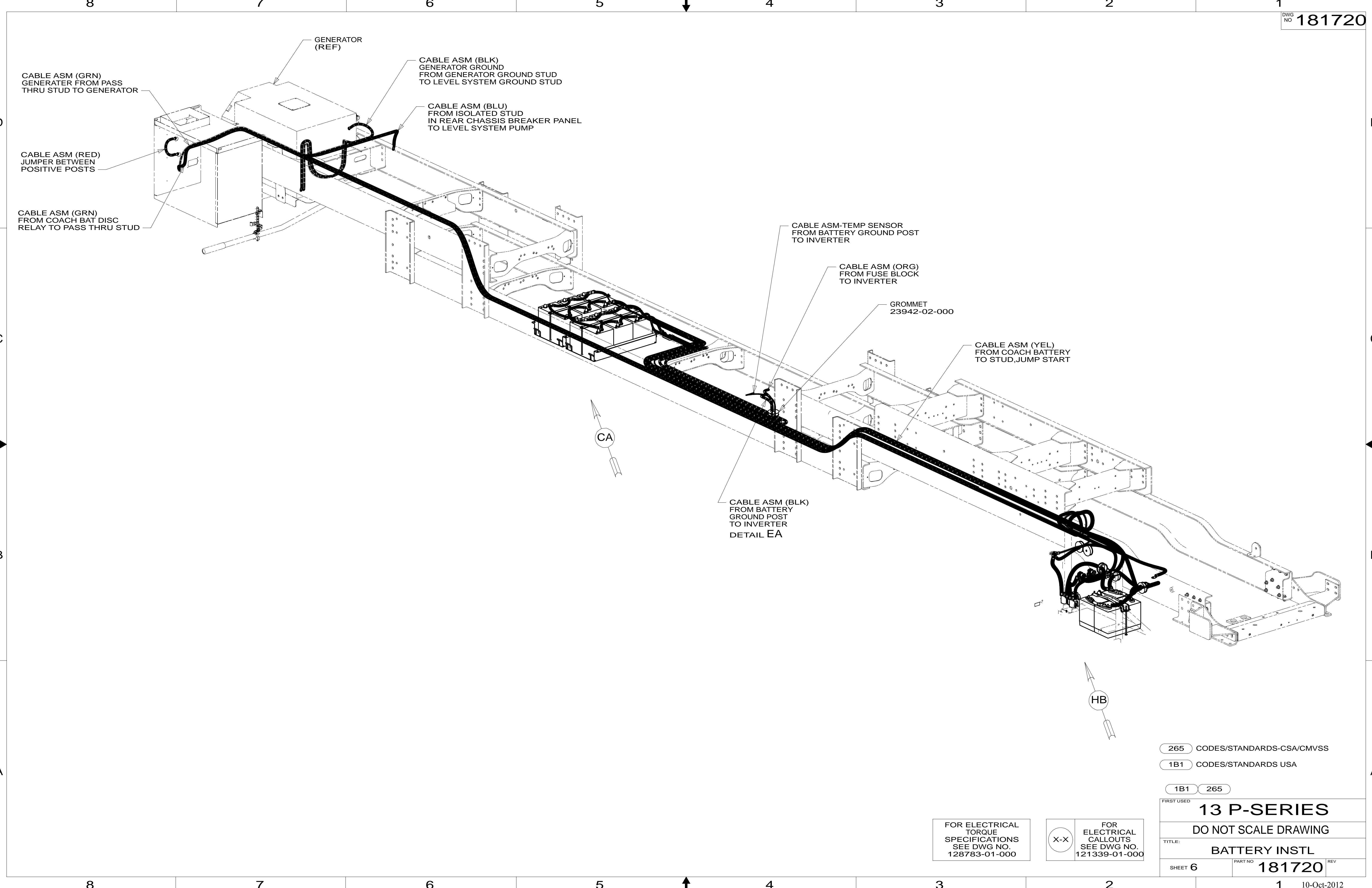
VIEW EB

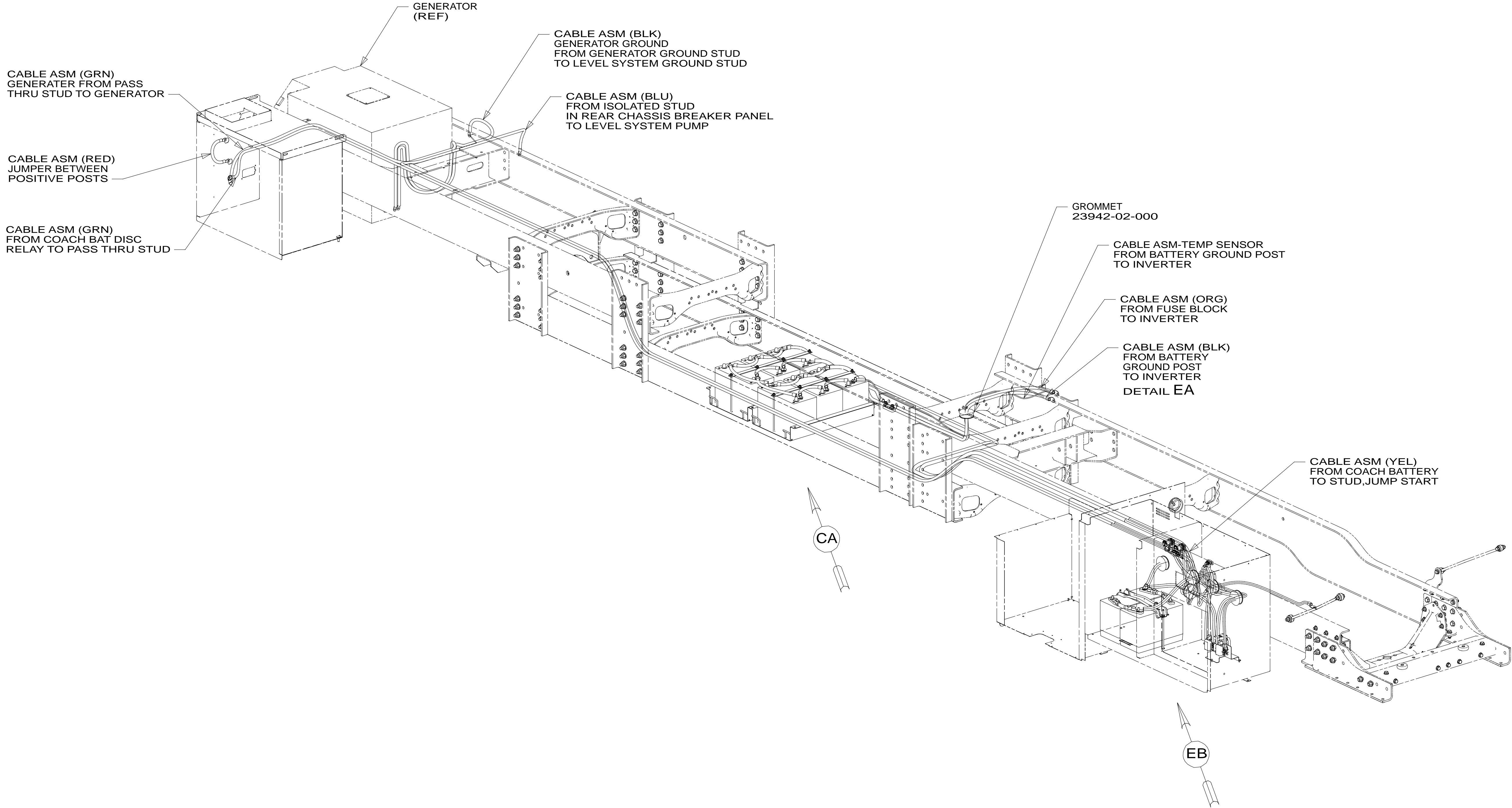
265 CODES/STANDARDS-CSA/CMVSS
 1B1 CODES/STANDARDS USA
 1B1 265

FOR ELECTRICAL TORQUE SPECIFICATIONS SEE DWG NO. 128783-01-000

X-X FOR ELECTRICAL CALLOUTS SEE DWG NO. 121339-01-000

FIRST USED
13 P-SERIES
 DO NOT SCALE DRAWING
 TITLE: **BATTERY INSTL**
 SHEET 5 PART NO **181720** REV
 10-Oct-2012





- 265 CODES/STANDARDS-CSA/CMVSS
- 1B1 CODES/STANDARDS USA
- 1B1 265

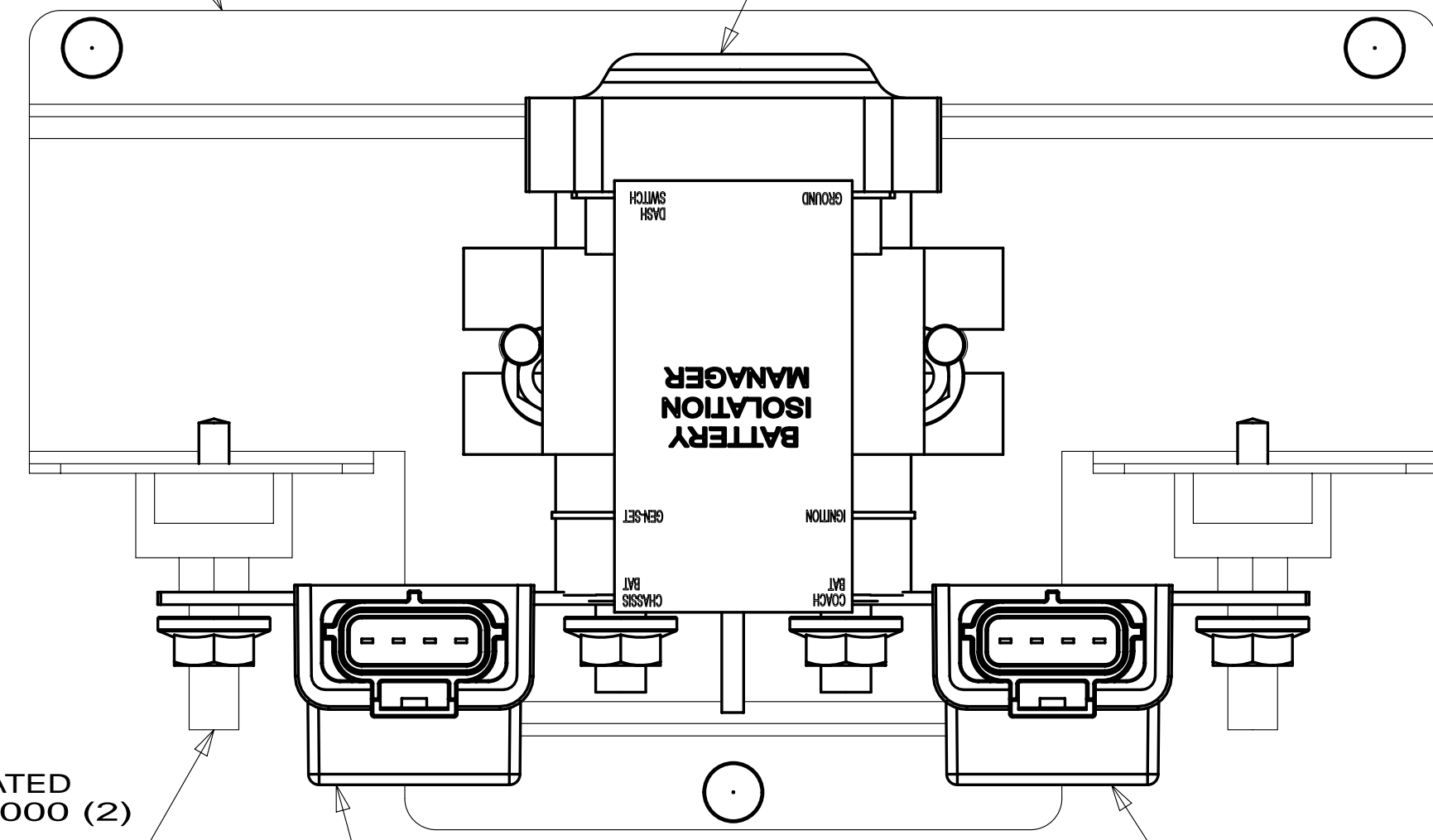
FOR ELECTRICAL TORQUE SPECIFICATIONS SEE DWG NO. 128783-01-000

FOR ELECTRICAL CALLOUTS SEE DWG NO. 121339-01-000

FIRST USED	
13 P-SERIES	
DO NOT SCALE DRAWING	
TITLE: BATTERY INSTL	
SHEET 7	PART NO 181720 REV

PLATE-ASM-SOLENOID,MOUNTING
180769-02-CHT
SCREW
G39-10-08U (3)

SOLENOID-SEALED
174291-01-000
NUT
D39-04-00U (2)



STUD-ISOLATED
86233-02-000 (2)
SCREW
G39-10-08U (4)

CHASSIS BATTERY
DISCONNECT
180722-01-000
NUT
D39-05-00U (2)

COACH BATTERY
DISCONNECT
180722-01-000
NUT
D39-05-00U (2)

VIEW HA

LABEL-JUMP START,COACH
176543-01-CHT

STUD-ISOLATED
86233-01-000
NUT
D39-06-00B
SCREW
G39-10-08U (2)
DETAIL HC

STUD-JUMP START,RED
175636-01-000

CABLE ASM (RED)

CABLE ASM (PUR)

CHASSIS BATTERY
DISCONNECT

COACH BATTERY
DISCONNECT

HA

GROMMET
23942-02-000 (5)

STUD-JUMP START,BLACK
175636-02-000

CABLE ASM (GRN)

CABLE ASM (YEL)

CABLE ASM (BLK)

AUX START
SOLENOID

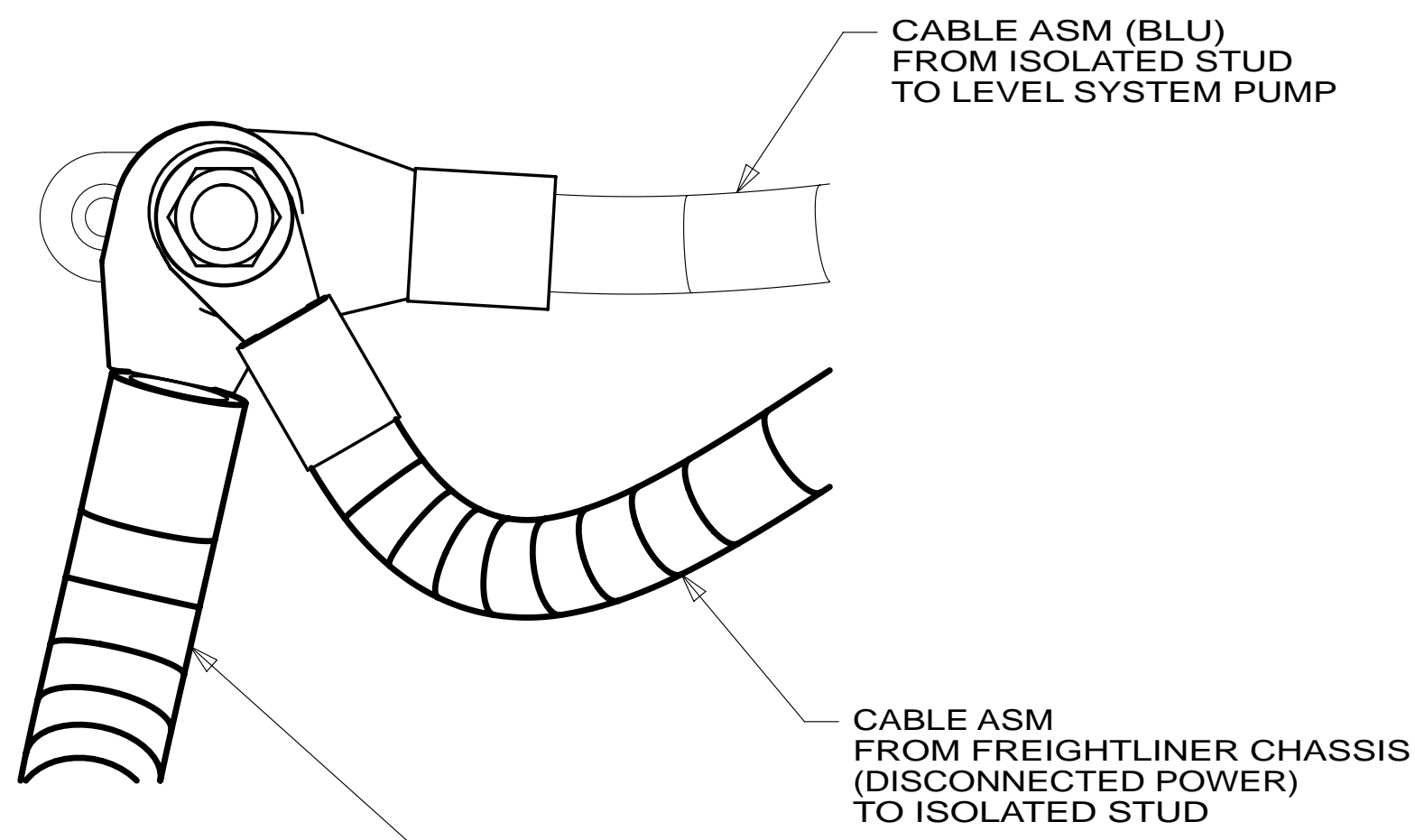
CHASSIS SUPPLIED
RED CABLE
TO STARTER

CHASSIS SUPPLIED
GROUND CABLE

BATTERY HOLDDOWN
(CHASSIS SUPPLIED)

BATTERY-12V (2)
(CHASSIS SUPPLIED)
TIEDOWN-BATTERY
(CHASSIS SUPPLIED)

BOLT
51387-06-000 (2)
NUT-HEX
D39-05-00U (2)
WASHER-RUBBER
184541-01-CHT (2)



CABLE ASM (BLU)
FROM ISOLATED STUD
TO LEVEL SYSTEM PUMP

CABLE ASM
FROM FREIGHTLINER CHASSIS
(DISCONNECTED POWER)
TO ISOLATED STUD

CABLE ASM (PUR)
FROM CHASSIS DISCONNECT
TO ISOLATED STUD

DETAIL HC

VIEW HB

265 CODES/STANDARDS-CSA/CMVSS

1B1 CODES/STANDARDS USA

1B1 265

FIRST USED
13 P-SERIES

DO NOT SCALE DRAWING

TITLE:
BATTERY INSTL

SHEET 8 PART NO **181720** REV

FOR ELECTRICAL
TORQUE
SPECIFICATIONS
SEE DWG NO.
128783-01-000

X-X
FOR
ELECTRICAL
CALLOUTS
SEE DWG NO.
121339-01-000