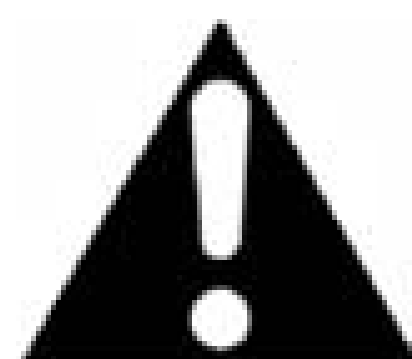




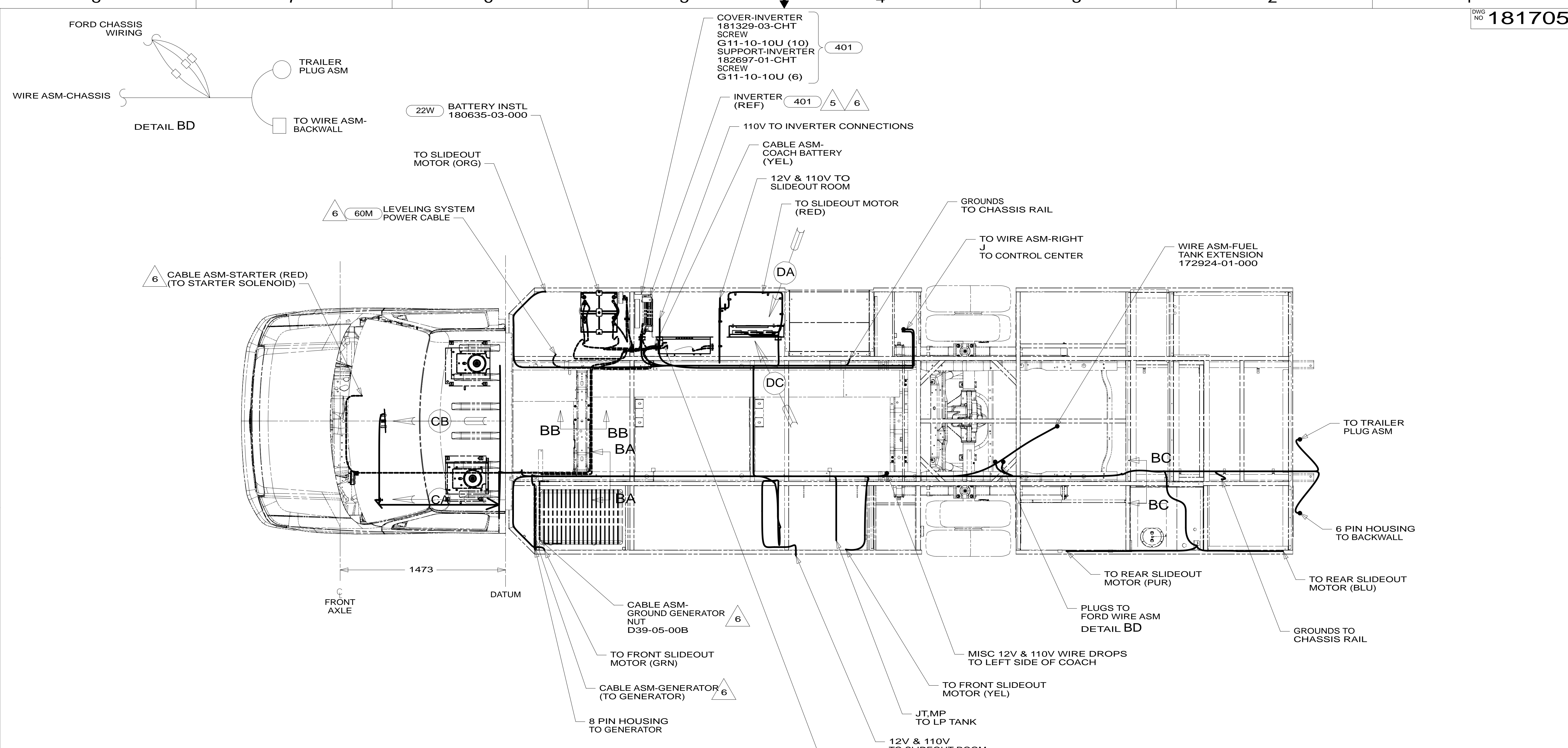
DANGER

Danger of electrical shock, burns or death. Always remove all power sources before attempting any repair, service or diagnostic work. Power can be present from shore power, generator, inverter or battery. All power sources must be disabled and secured before performing any service.

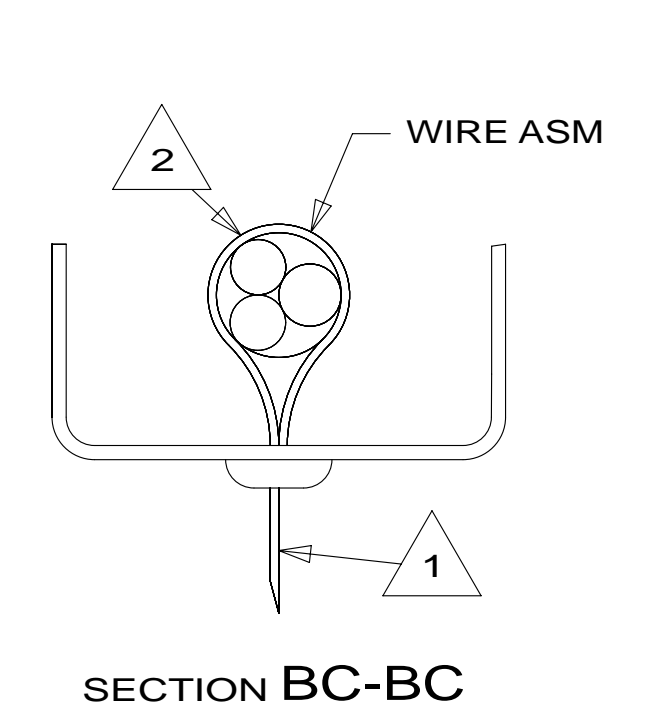
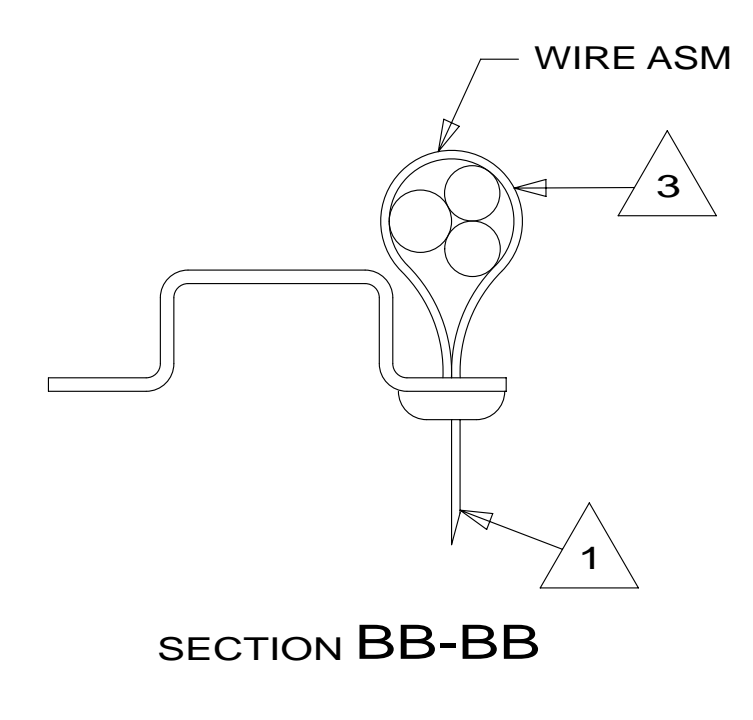
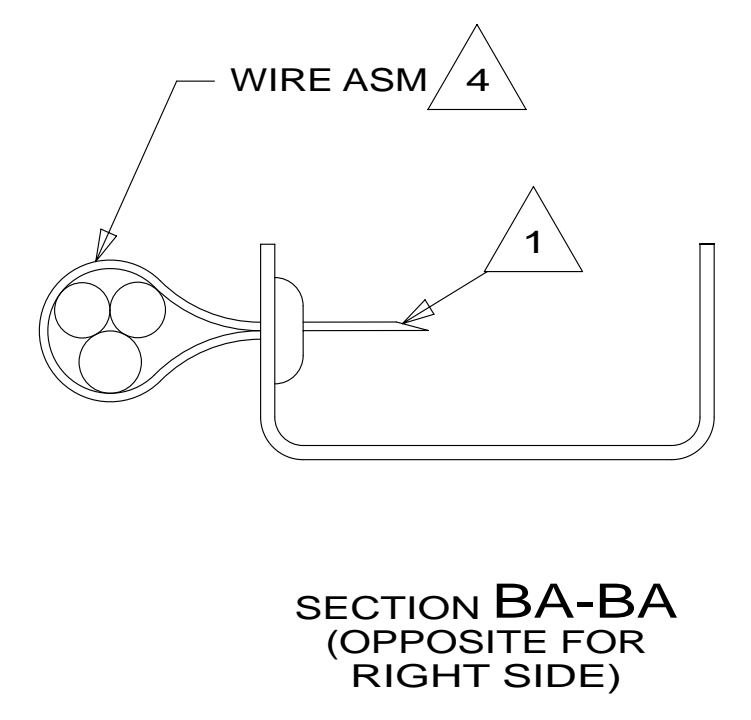


CAUTION

If you lack the skills, tools or equipment to perform diagnostic or repair work leave such work to an authorized Winnebago Industries dealer or other qualified shop.



- NOTES:
- 6 SEE BATTERY INSTL FOR ADDITIONAL INFORMATION.
 - 5 SEE LOAD CENTER/ATS ASM FOR ADDITIONAL INFORMATION.
 - 4 WIRES TO BE TIED TO CROSS MEMBER USING EXISTING HOLES.
 - 3 WIRES TO BE TIED TO TOP OF RAIL USING EXISTING HOLES.
 - 2 WIRES TO BE TIED TO INSIDE OF RAIL USING EXISTING HOLES.
 - 1 CUT OFF EXCESS END OF WIRE TIE.



FOR ELECTRICAL TORQUE SPECIFICATIONS SEE DWG NO. 128783-01-000

FOR ELECTRICAL CALLOUTS SEE DWG NO. 121339-01-000

- 40A INVERTER-DC/AC WITHOUT
- 401 INVERTER-DC/AC, 1000 WATT
- 60M HYDRAULIC LEVEL JACKS-AUTO
- 22W BATTERY-SECOND
- 16Y FORD CHASSIS - 14,500#
- 265 CODES/STANDARDS-CSA/CMVSS
- 1B1 CODES/STANDARDS USA

FIRST USED

13 730C

DO NOT SCALE DRAWING

TITLE: **WIRING INSTL-CHASSIS**

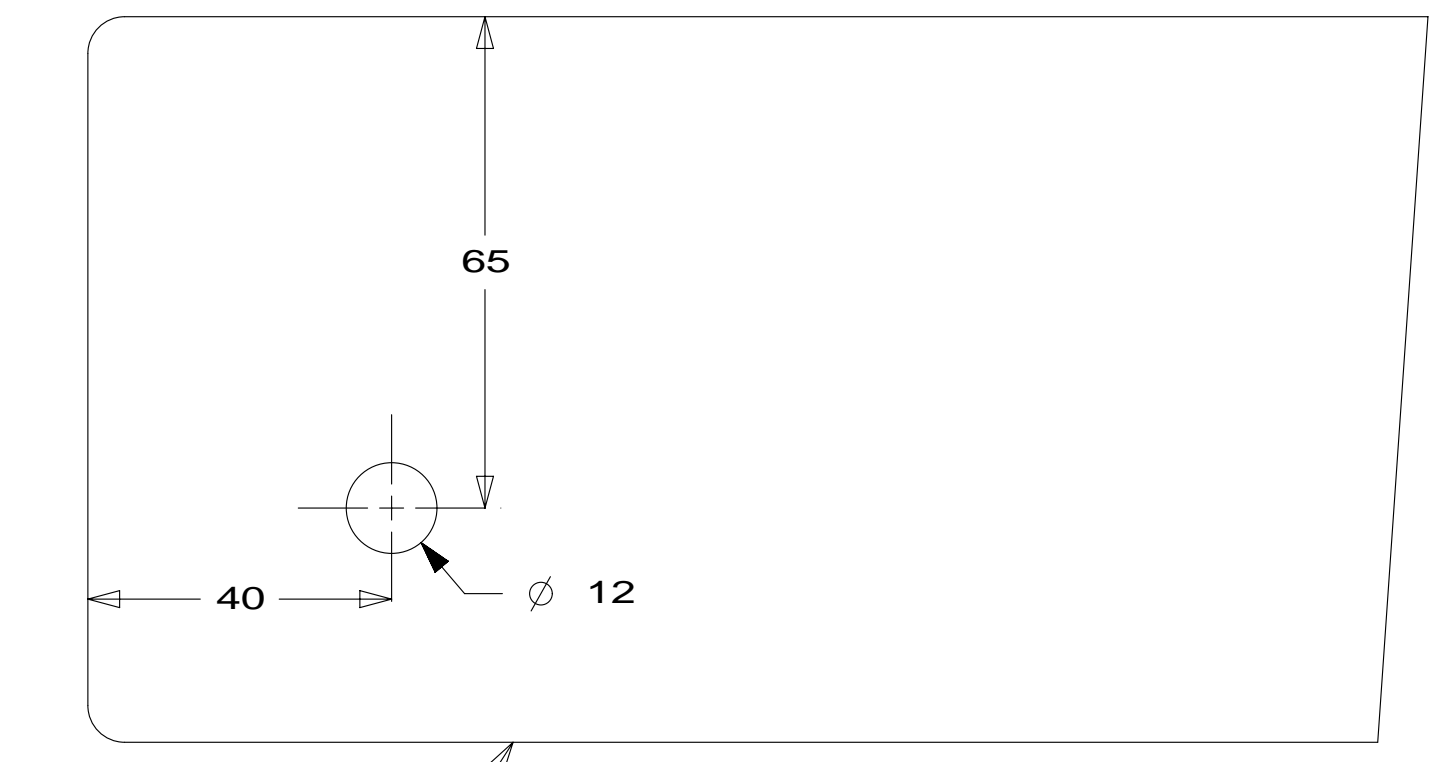
SHEET 2 PART NO **181705** REV

25-Jun-2012

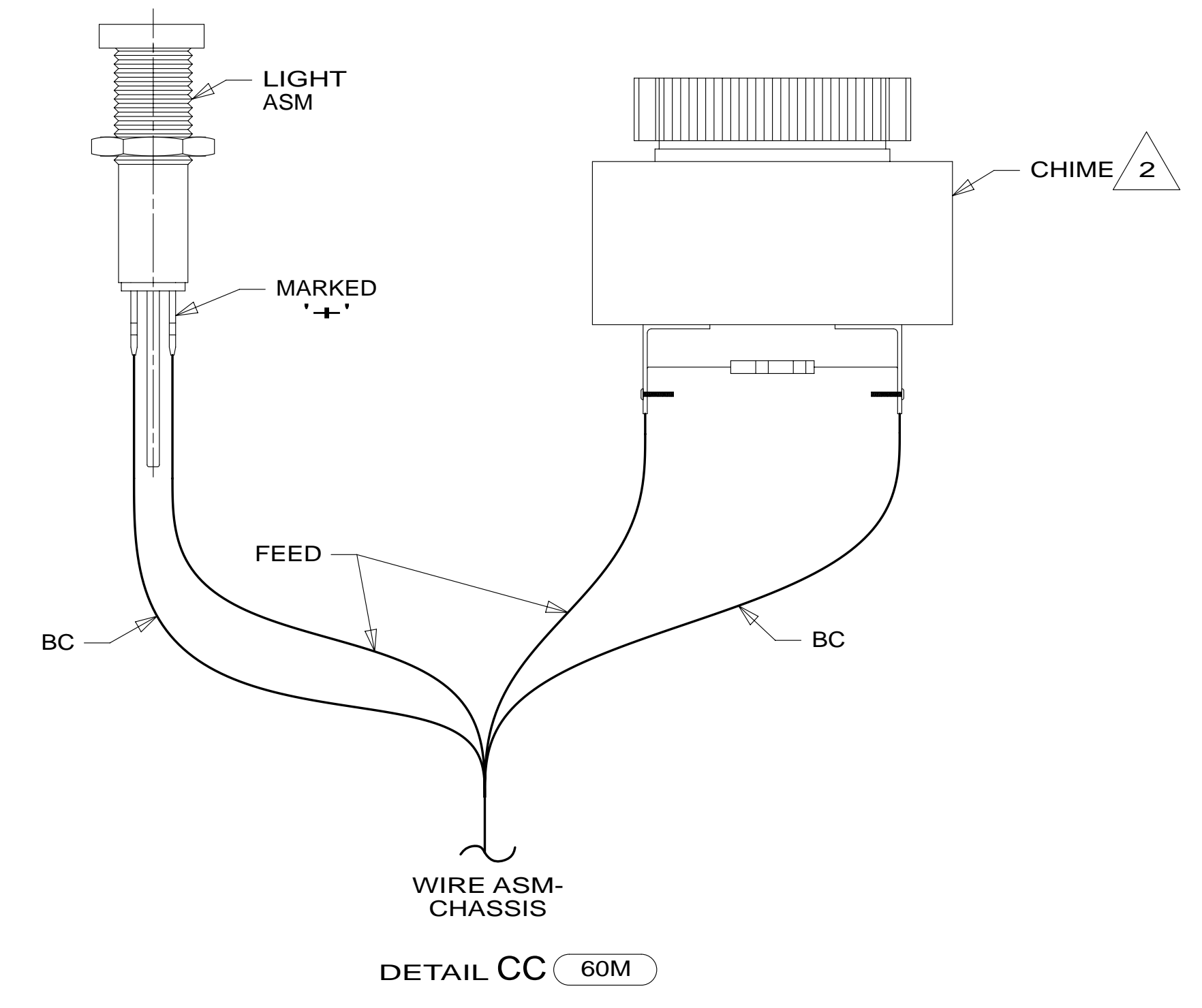
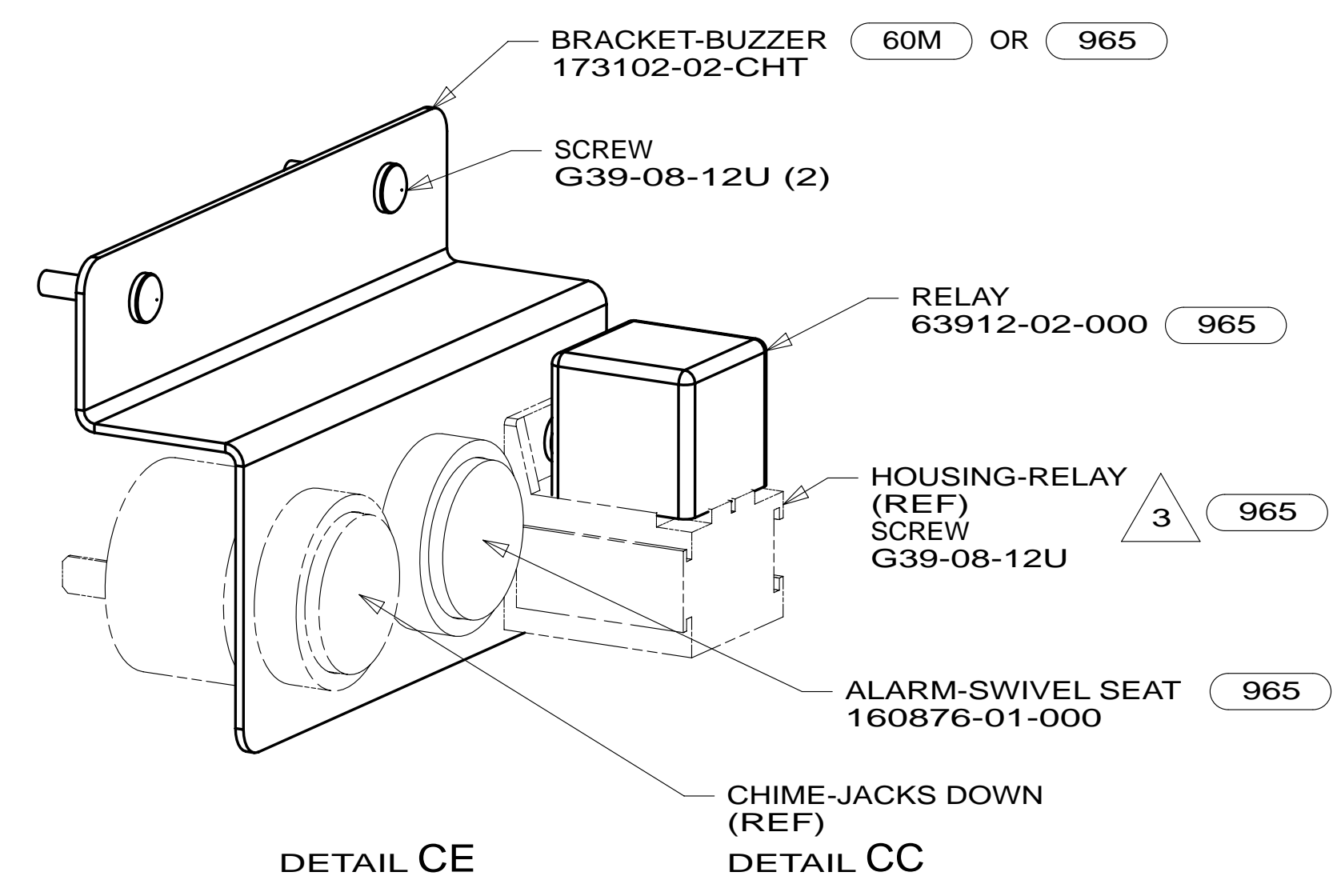
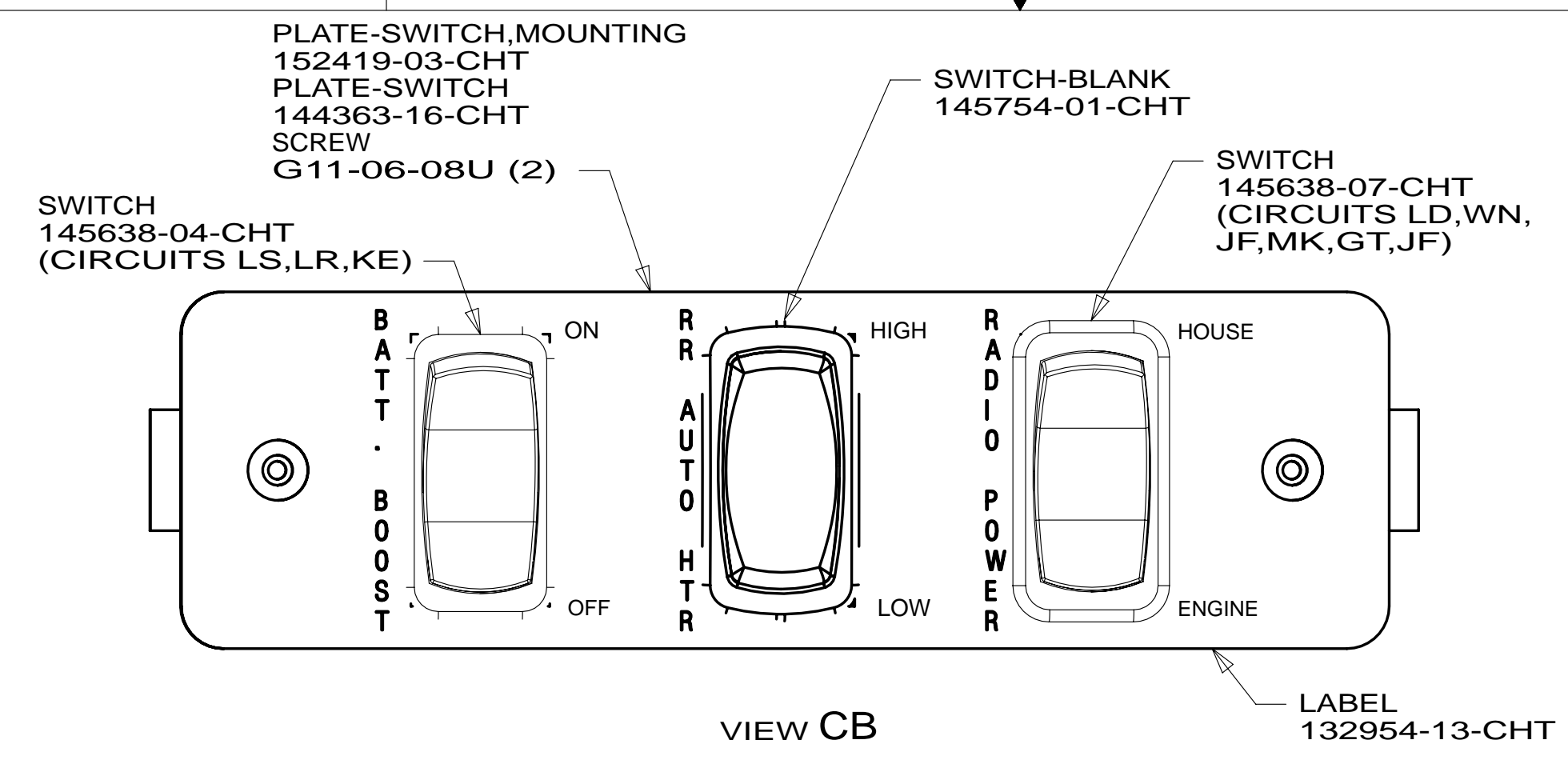
LIGHT ASSEMBLY-INDICATOR
150237-01-000
DETAIL CC

JACKS DOWN LABEL-JACKS DOWN
133533-01-CHT

DETAIL CA 60M



LEFT SIDE OF STEERING COLUMN
DETAIL CD 60M



ANGLE-FORMED, SWITCH
177419-01-CHT
SCREW-PAN, HEAD
G39-08-12U (2)

CLAMP-CABLE
10495-02-000 (4)
SCREW-PAN, HEAD
G39-08-12U (4)

BRACKET-SWIVEL SEAT
177471-01-CHT
SCREW-PAN, HEAD
G39-08-06U (2)

ANGLE-FORMED, SWITCH
177419-01-CHT
SCREW-PAN, HEAD
G39-08-12U (2)

BRACKET-SWIVEL SEAT
177471-01-CHT
SCREW-PAN, HEAD
G39-08-06U (2)

PEDESTAL-SEAT,
SWIVEL, DRIVER
(REF)

SWITCH-LEAF ACTIVATOR
56264-01-000
SCREW-MACHINE
G18-04-10U (2)
NUT-HEX, LOCK
D27-04-00U (2)

DETAIL CF

SWITCH-LEAF ACTIVATOR
56264-01-000
SCREW-MACHINE
G18-04-10U (2)
NUT-HEX, LOCK
D27-04-00U (2)

CLAMP-CABLE
10495-02-000 (2)
SCREW-PAN, HEAD
G39-08-12U (2)

DETAIL CG

PEDESTAL-SEAT,
SWIVEL, PASSENGER
(REF)

- 965 SEAT PEDESTALS-SWIVEL/SLIDE
- 60M HYDRAULIC LEVEL JACKS-AUTO
- 16Y FORD CHASSIS - 14,500#
- 265 CODES/STANDARDS-CSA/CMVSS
- 1B1 CODES/STANDARDS USA

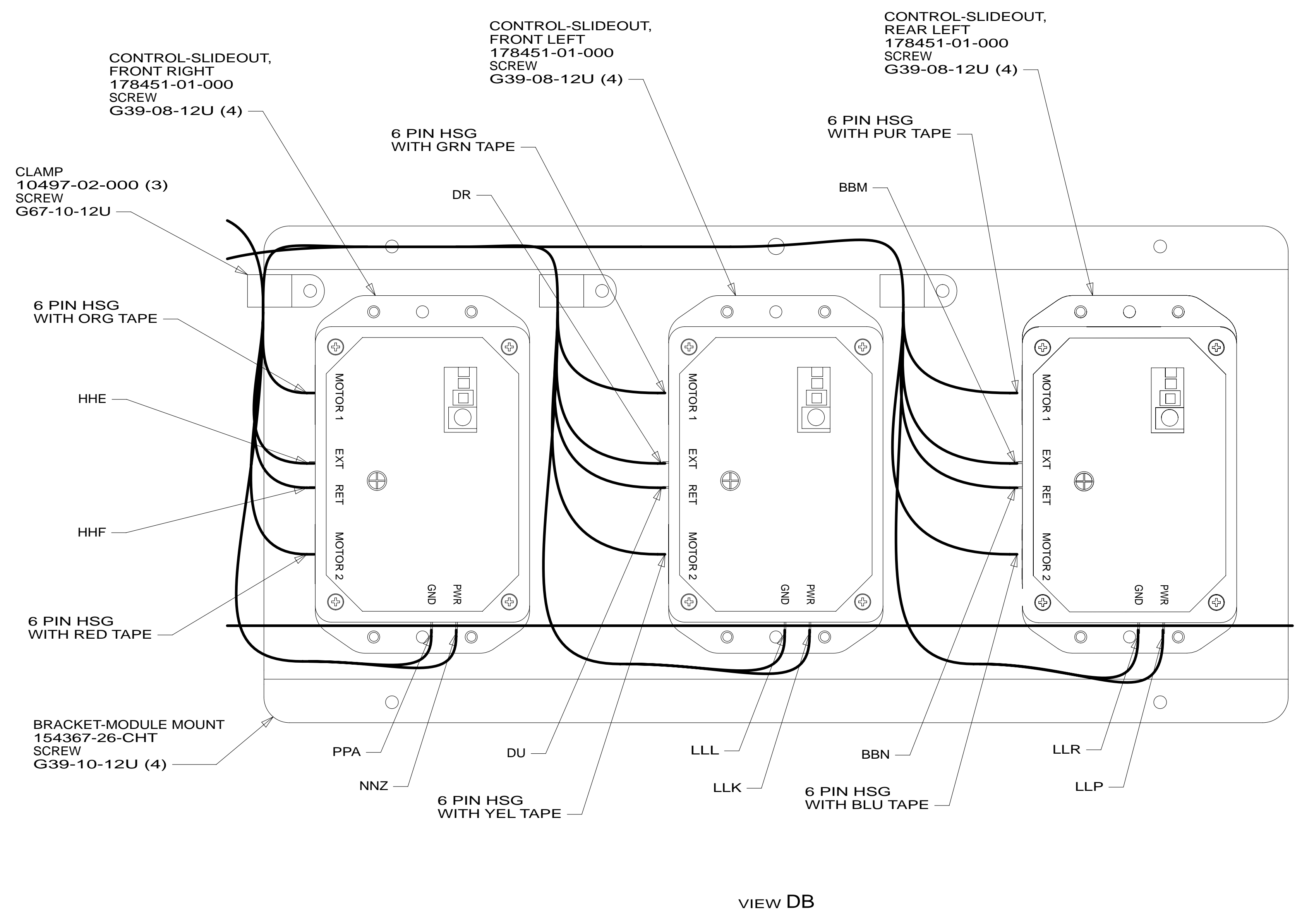
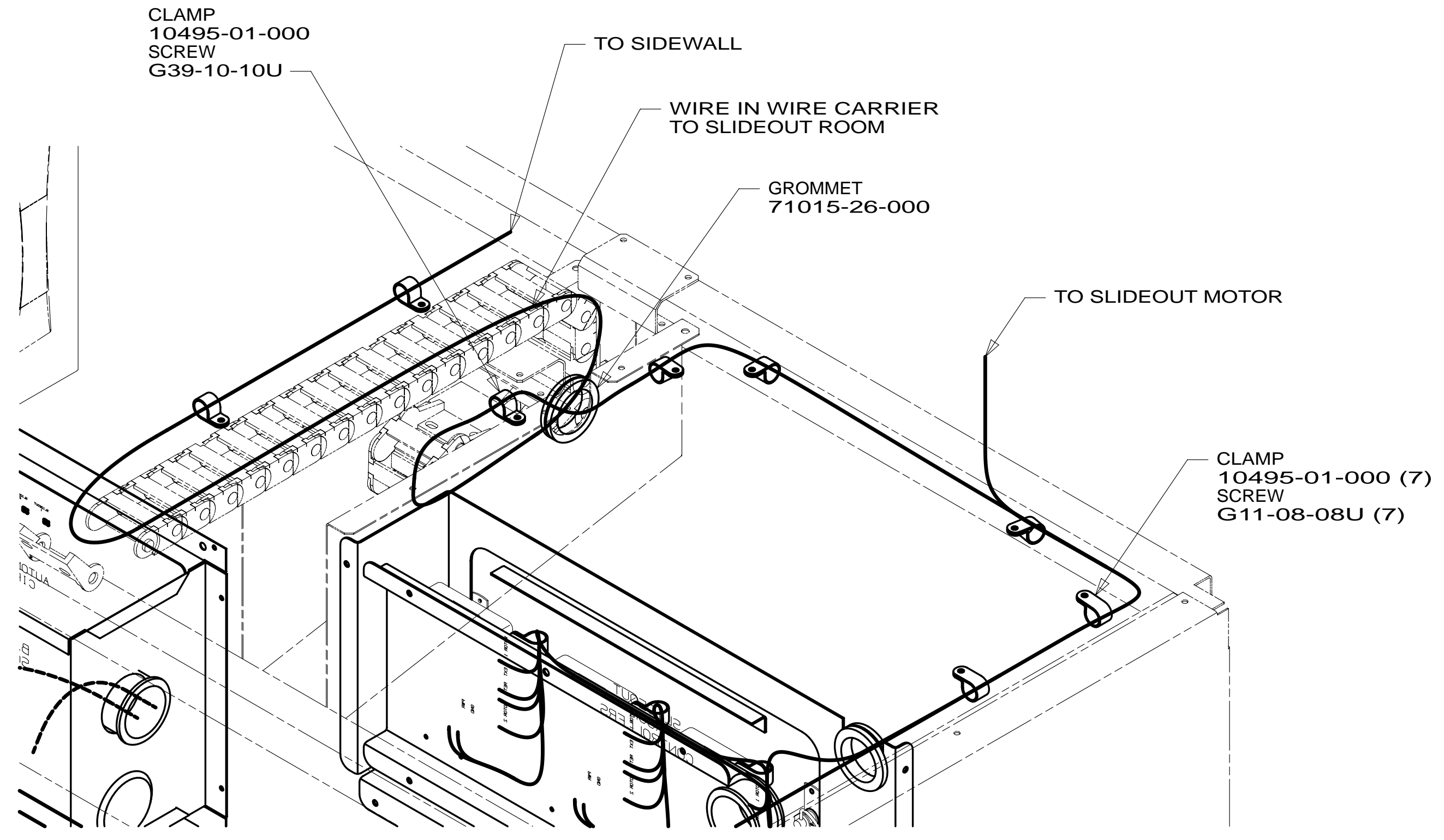
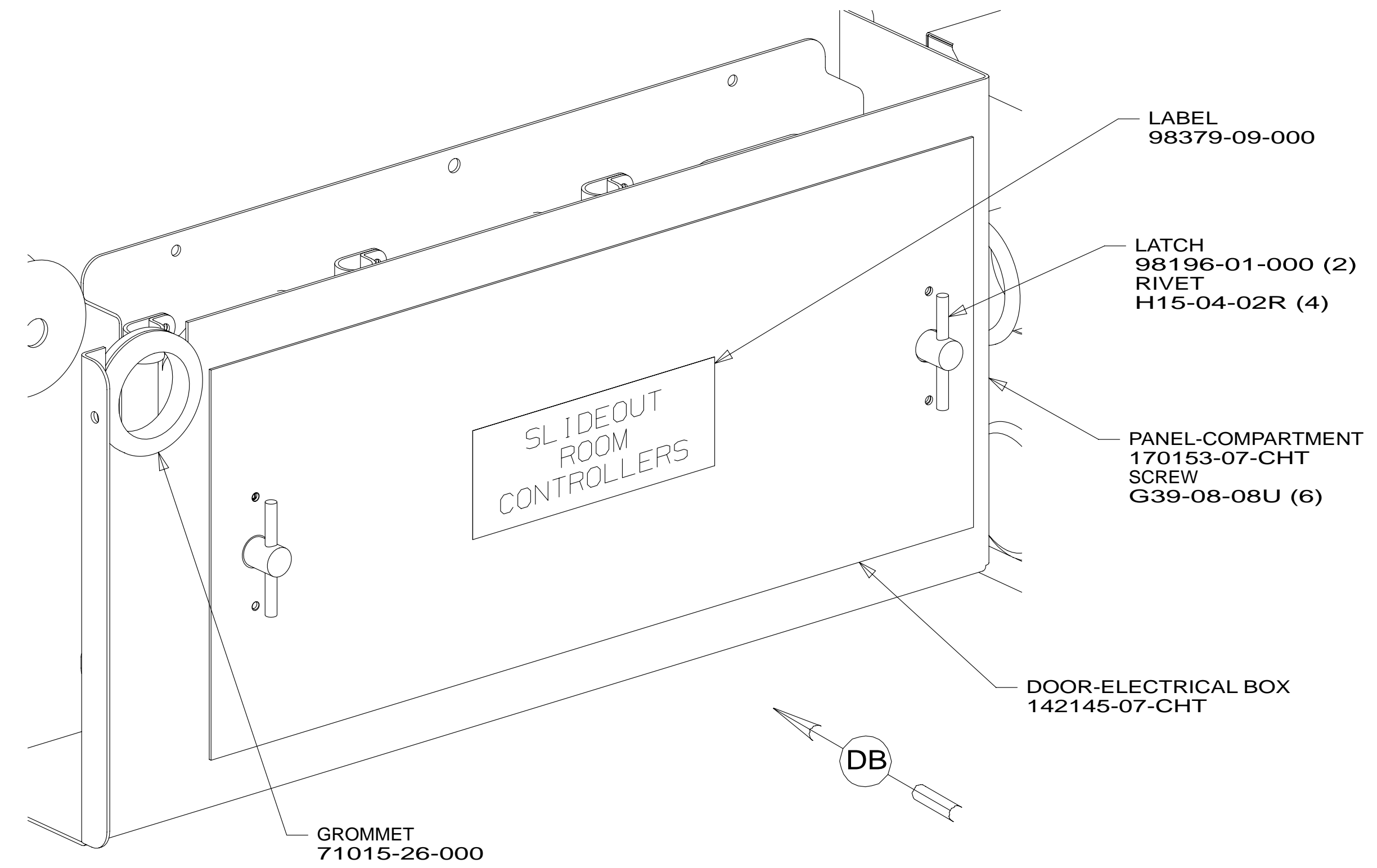
- NOTES:
- 5 ATTACH WIRE TIE 116673-01-000 TO FORD SEAT WIRING.
 - 4 INSTALL CLAMP FOR FORD SEAT WIRING.
 - 3 PART OF WIRE ASM-CHASSIS.
 - 2 SUPPLIED WITH LEVELING SYSTEM.
 - 1 FOR HOLE SIZE AND LOCATION SEE DETAIL CD.

6 COVER WIRING WITH CONVOLUTE 41953-01-000 (150 MM) TO PROTECT WIRES FROM SHARP EDGES WHERE THEY PASS THROUGH SEAT PEDESTAL. SECURE BOTH ENDS TO WIRES WITH TAPE 8363-01-000.

FOR ELECTRICAL TORQUE SPECIFICATIONS SEE DWG NO. 128783-01-000

FOR ELECTRICAL CALLOUTS SEE DWG NO. 121339-01-000

FIRST USED
13 730C
DO NOT SCALE DRAWING
TITLE: **WIRING INSTL-CHASSIS**
SHEET 3 PART NO **181705** REV
25-Jun-2012



- LABEL
98379-09-000
- LATCH
98196-01-000 (2)
RIVET
H15-04-02R (4)
- PANEL-COMPARTMENT
170153-07-CHT
SCREW
G39-08-08U (6)
- DOOR-ELECTRICAL BOX
142145-07-CHT

- CONTROL-SLIDEOUT,
FRONT RIGHT
178451-01-000
SCREW
G39-08-12U (4)
- CONTROL-SLIDEOUT,
FRONT LEFT
178451-01-000
SCREW
G39-08-12U (4)
- CONTROL-SLIDEOUT,
REAR LEFT
178451-01-000
SCREW
G39-08-12U (4)
- CLAMP
10497-02-000 (3)
SCREW
G67-10-12U
- 6 PIN HSG
WITH GRN TAPE
- 6 PIN HSG
WITH PUR TAPE
- 6 PIN HSG
WITH ORG TAPE
- 6 PIN HSG
WITH RED TAPE
- 6 PIN HSG
WITH YEL TAPE
- 6 PIN HSG
WITH BLU TAPE
- BRACKET-MODULE MOUNT
154367-26-CHT
SCREW
G39-10-12U (4)
- CLAMP
10495-01-000 (7)
SCREW
G11-08-08U (7)

FIRST USED	13 730C	
TITLE:	DO NOT SCALE DRAWING	
	WIRING INSTL-CHASSIS	
SHEET 4	PART NO 181705	REV