



DANGER

Danger of electrical shock, burns or death. Always remove all power sources before attempting any repair, service or diagnostic work. Power can be present from shore power, generator, inverter or battery. All power sources must be disabled and secured before performing any service.



CAUTION

If you lack the skills, tools or equipment to perform diagnostic or repair work leave such work to an authorized Winnebago Industries dealer or other qualified shop.

DRAWING NO.	MODEL	SHEETS
181620-01	224V	1,4
181620-02	231C/P, 226Q/P, 231W/P	2,4
181620-03	231J/P, 231R/P, 231W/P	3,4

RELEASE	REV/DATE	DWG NO	181620
REV ZONE	REVISION RECORD	DATE	DFT-ORIG

D

D

C

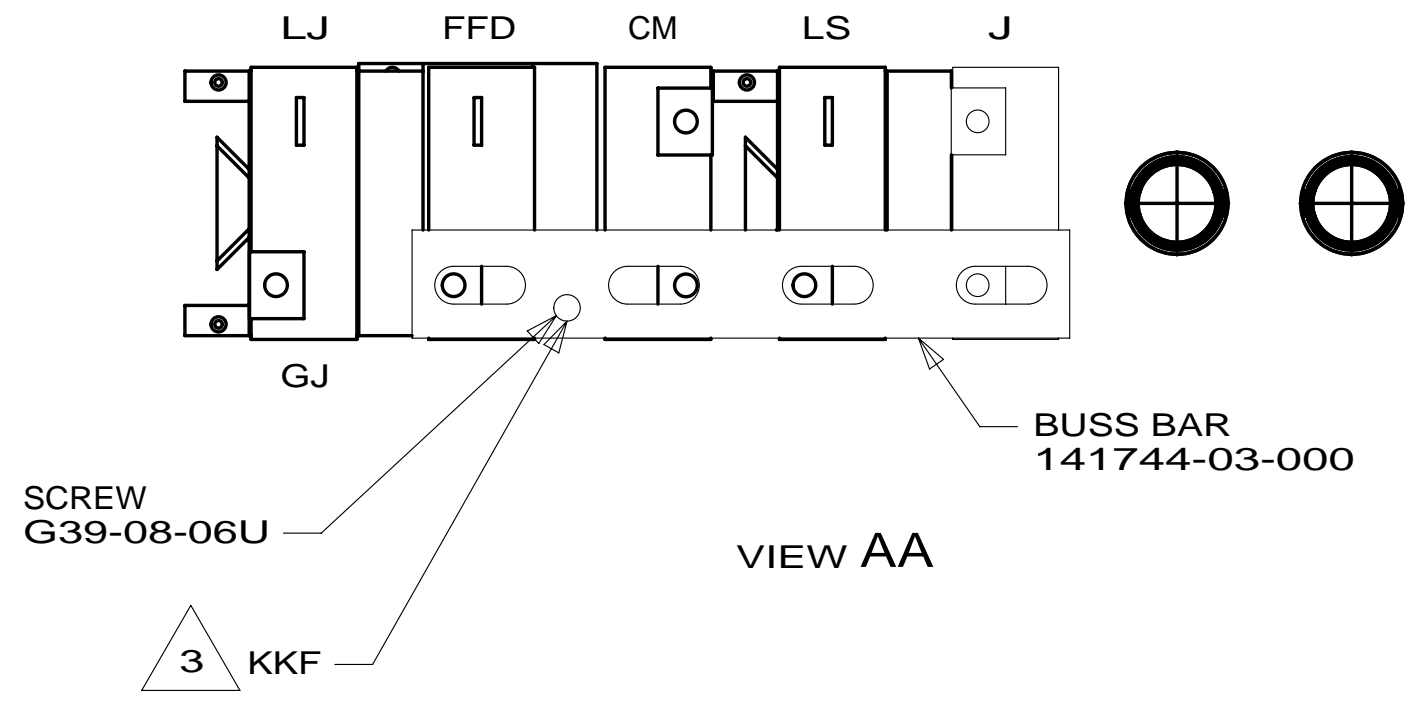
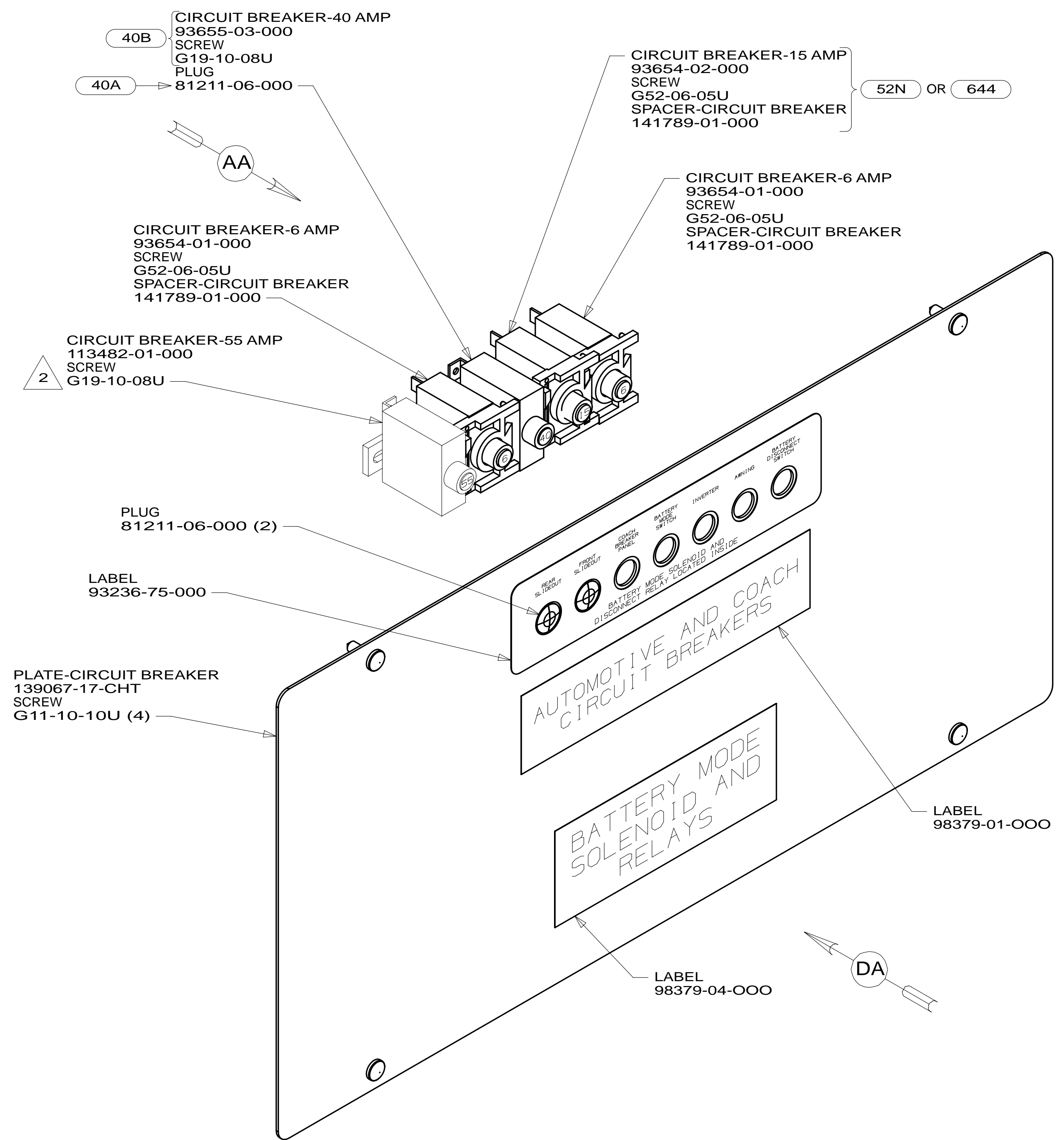
C

B

B

A

A



- 099 SLIDEOUT ROOM - DELETE
- 1D2 SLIDEOUT ROOM-REAR RIGHTHAND
- 644 GREAT ALASKAN RENTAL PACKAGE
- 52N AWNING - PATIO, ELECTRIC
- 40B INVERTER-DC/AC, 300 WATT
- 40A INVERTER-DC/AC WITHOUT
- 265 CODES/STANDARDS-CSA/CMVSS
- 1B1 CODES/STANDARDS USA

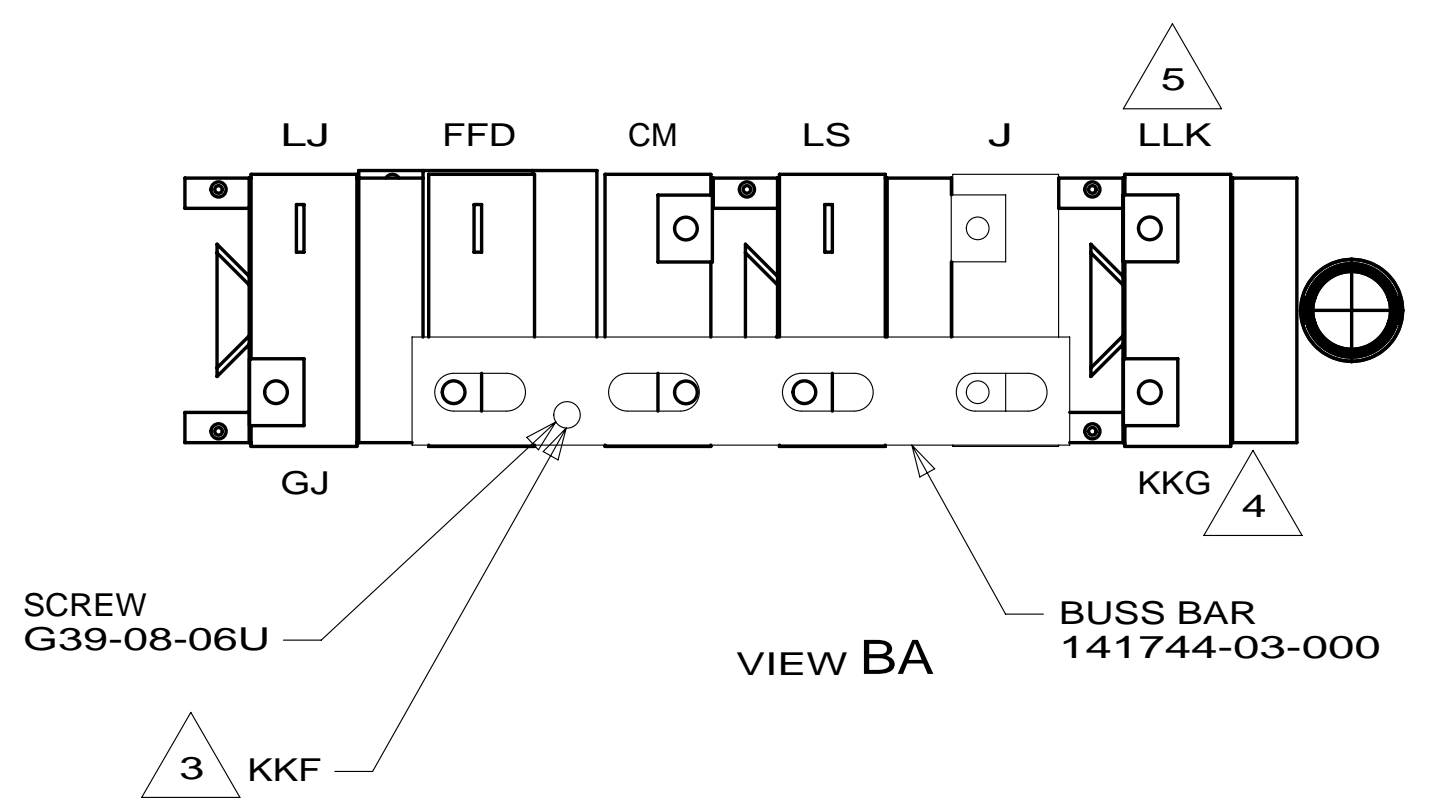
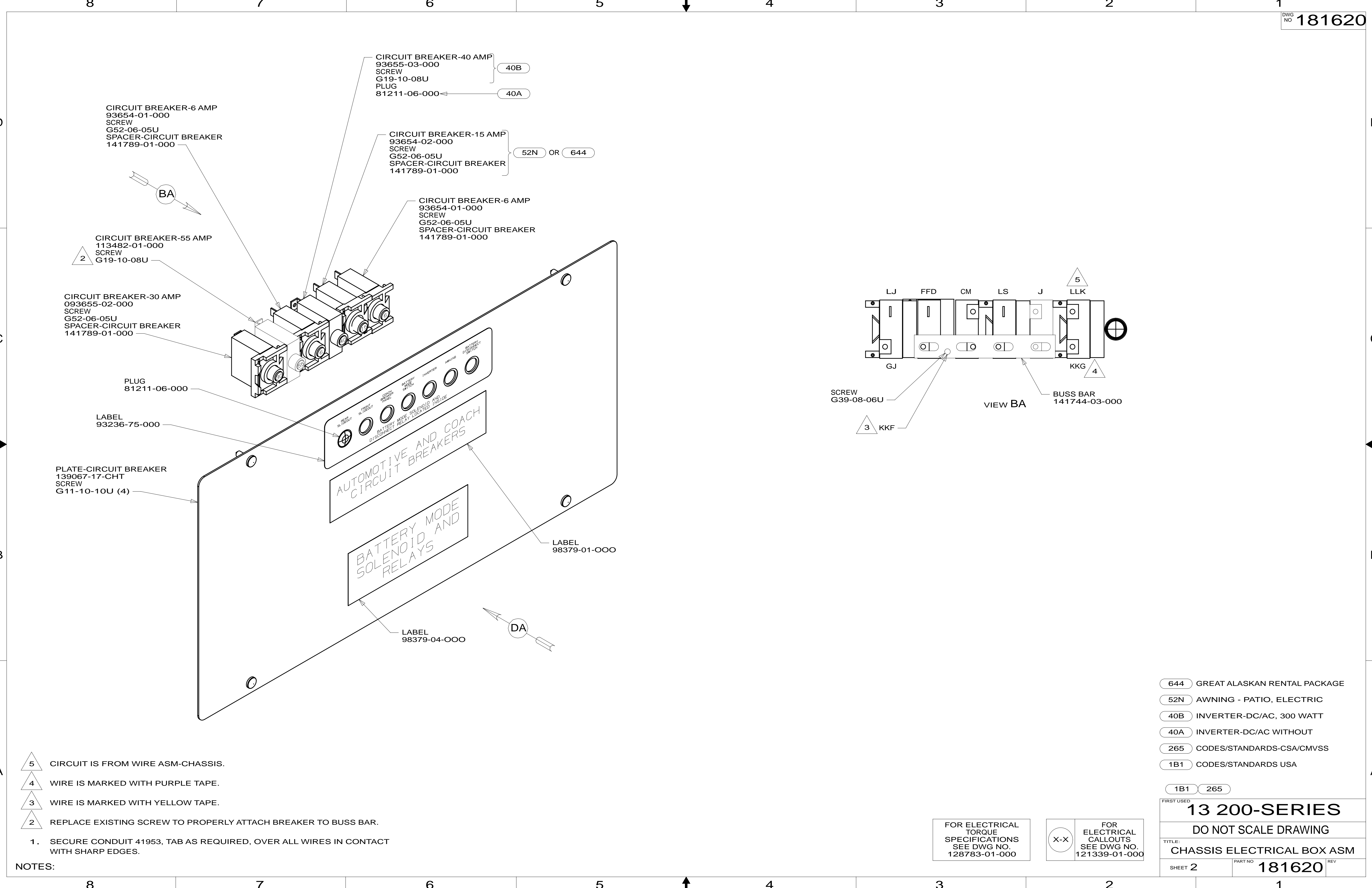
- 1B1 265

		COPYRIGHT 2011 WINNEBAGO INDUSTRIES, INC.
DFT-ORIG	ORIG. DATE	
CHKR	ALL DIMENSIONS ARE IN MILLIMETERS	
P.E.	FIRST USED	
M.E.	13 200-SERIES	
DSNR	UNSPECIFIED TOLERANCES ARE:	
WHOLE DIM (X) :		MATERIAL:
ONE-PLACE (X.X) :		
TWO-PLACE (X.XX) :		
ANGLE :		
THIRD ANGLE PROJECTION		
DO NOT SCALE DRAWING		REFER TO ES0018 FOR FASTENER TIGHTENING GUIDELINES
TITLE: CHASSIS ELECTRICAL BOX ASM		
SHEET 1 OF 4	PART NO	181620
REF:	1	

- NOTES:
- 5 231W/P WITH 1D2
 - 4 231W/P WITH 099
 - 3 WIRE IS MARKED WITH YELLOW TAPE.
 - 2 REPLACE EXISTING SCREW TO PROPERLY ATTACH BREAKER TO BUSS BAR.
 - 1. SECURE CONDUIT 41953, TAB AS REQUIRED, OVER ALL WIRES IN CONTACT WITH SHARP EDGES.

FOR ELECTRICAL
TORQUE
SPECIFICATIONS
SEE DWG NO.
128783-01-000

FOR
ELECTRICAL
CALLOUTS
SEE DWG NO.
121339-01-000



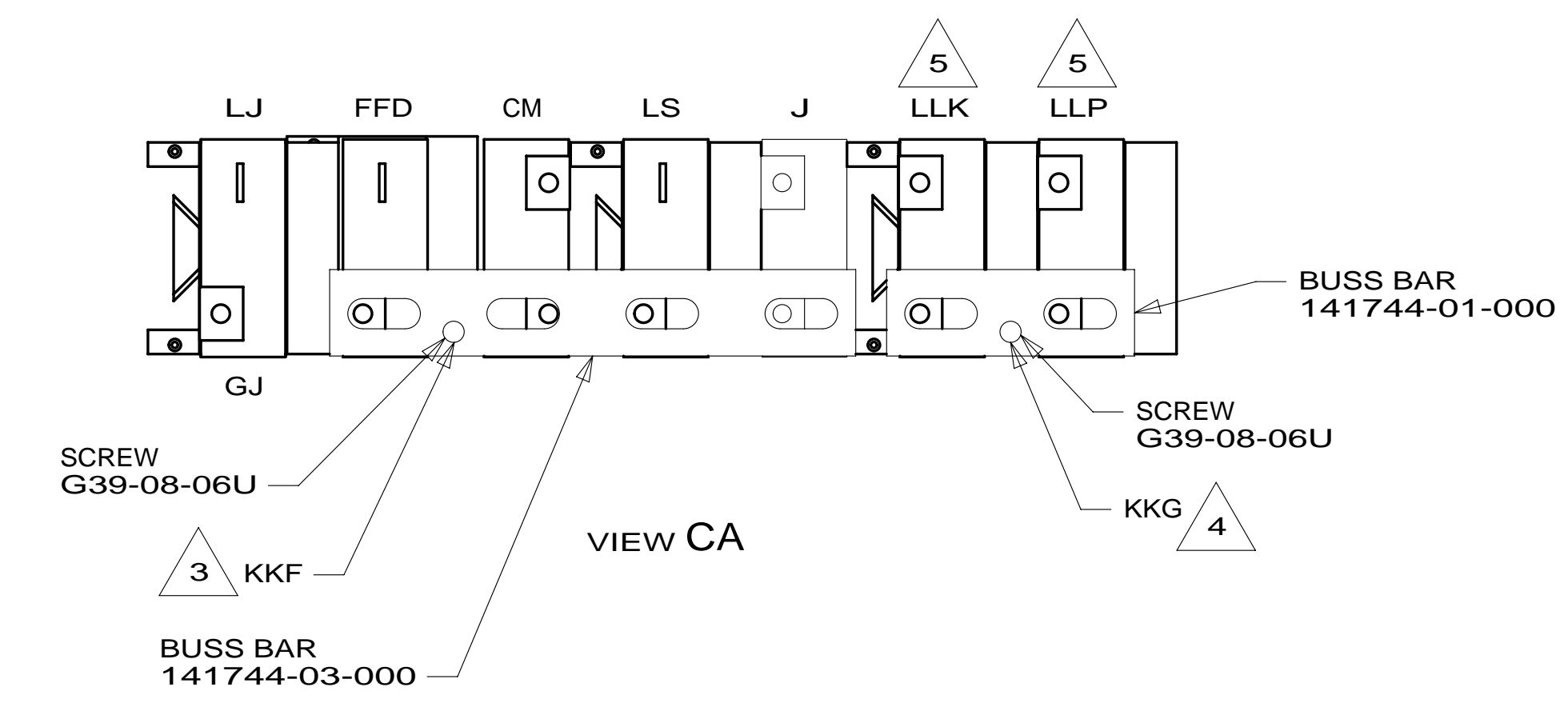
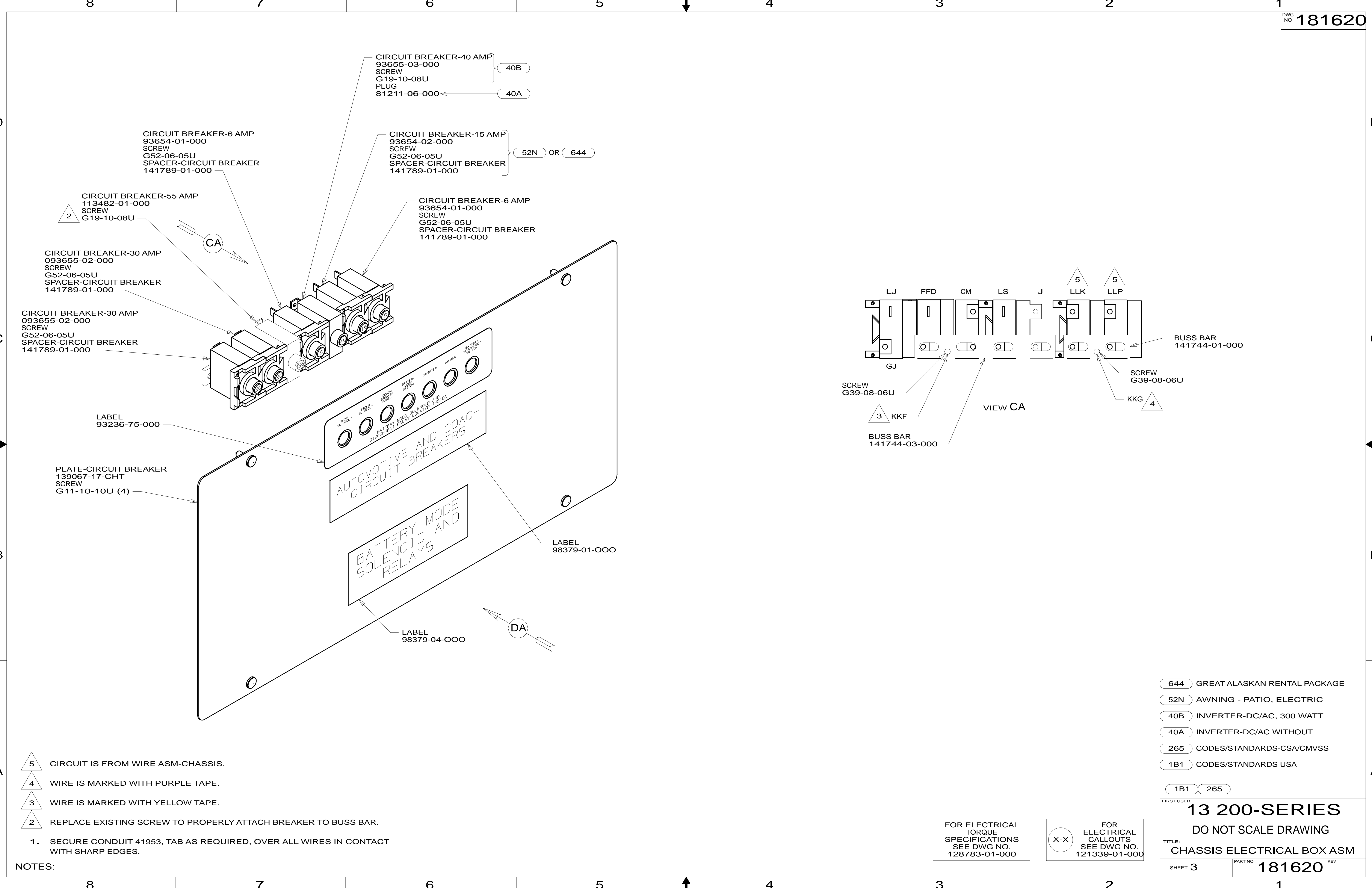
- NOTES:**
- 5 CIRCUIT IS FROM WIRE ASM-CHASSIS.
 - 4 WIRE IS MARKED WITH PURPLE TAPE.
 - 3 WIRE IS MARKED WITH YELLOW TAPE.
 - 2 REPLACE EXISTING SCREW TO PROPERLY ATTACH BREAKER TO BUSS BAR.
 - 1. SECURE CONDUIT 41953, TAB AS REQUIRED, OVER ALL WIRES IN CONTACT WITH SHARP EDGES.

- 644 GREAT ALASKAN RENTAL PACKAGE
- 52N AWNING - PATIO, ELECTRIC
- 40B INVERTER-DC/AC, 300 WATT
- 40A INVERTER-DC/AC WITHOUT
- 265 CODES/STANDARDS-CSA/CMVSS
- 1B1 CODES/STANDARDS USA

FOR ELECTRICAL TORQUE SPECIFICATIONS SEE DWG NO. 128783-01-000

FOR ELECTRICAL CALLOUTS SEE DWG NO. 121339-01-000

FIRST USED	
13 200-SERIES	
DO NOT SCALE DRAWING	
TITLE: CHASSIS ELECTRICAL BOX ASM	
SHEET 2	PART NO 181620 REV



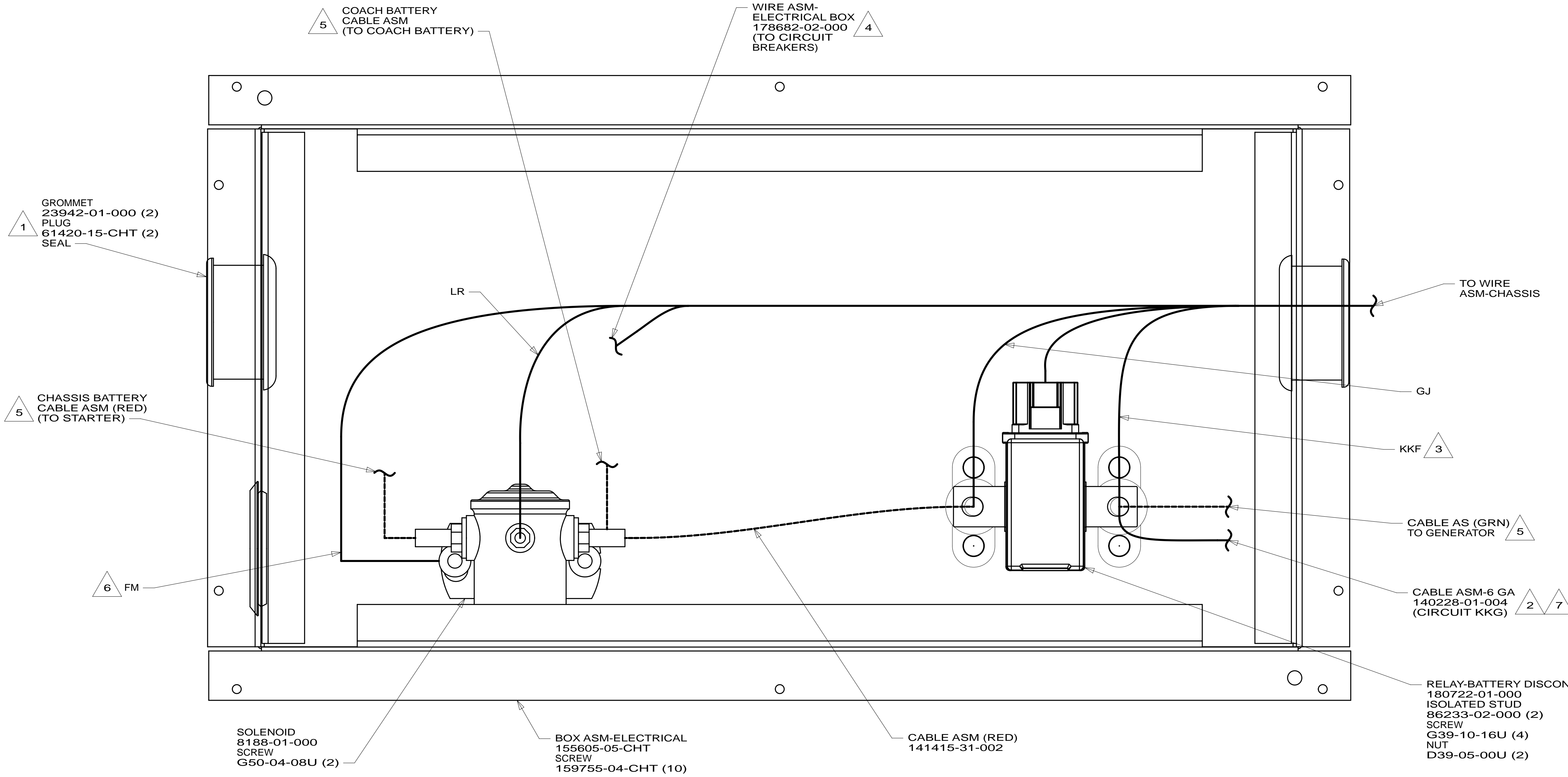
- NOTES:
- 5 CIRCUIT IS FROM WIRE ASM-CHASSIS.
 - 4 WIRE IS MARKED WITH PURPLE TAPE.
 - 3 WIRE IS MARKED WITH YELLOW TAPE.
 - 2 REPLACE EXISTING SCREW TO PROPERLY ATTACH BREAKER TO BUSS BAR.
 - 1. SECURE CONDUIT 41953, TAB AS REQUIRED, OVER ALL WIRES IN CONTACT WITH SHARP EDGES.

- 644 GREAT ALASKAN RENTAL PACKAGE
- 52N AWNING - PATIO, ELECTRIC
- 40B INVERTER-DC/AC, 300 WATT
- 40A INVERTER-DC/AC WITHOUT
- 265 CODES/STANDARDS-CSA/CMVSS
- 1B1 CODES/STANDARDS USA

FIRST USED	
13 200-SERIES	
DO NOT SCALE DRAWING	
TITLE: CHASSIS ELECTRICAL BOX ASM	
SHEET 3	PART NO 181620 REV

FOR ELECTRICAL TORQUE SPECIFICATIONS SEE DWG NO. 128783-01-000

FOR ELECTRICAL CALLOUTS SEE DWG NO. 121339-01-000



VIEW DA 4

- NOTES:
- 7 NOT USED ON 224V.
 - 6 SECURE WITH SOLENOID MOUNTING SCREW.
 - 5 SEE WIRING INSTL-CHASSIS FOR ADDITIONAL INFORMATION.
 - 4 TAPE BACK UNUSED WIRES TO HARNESS.
 - 3 WIRE IS MARKED WITH YELLOW TAPE.
 - 2 WIRE IS MARKED WITH PURPLE TAPE.
 - 1 LOCATION OF GROMMET & PLUG DEPENDENT ON LOCATION OF BOX.

265 CODES/STANDARDS-CSA/CMVSS
1B1 CODES/STANDARDS USA

1B1 265

FIRST USED
13 200-SERIES
DO NOT SCALE DRAWING
TITLE: **CHASSIS ELECTRICAL BOX ASM**
SHEET 4 PART NO. **181620** REV

FOR ELECTRICAL TORQUE SPECIFICATIONS SEE DWG NO. 128783-01-000

FOR ELECTRICAL CALLOUTS SEE DWG NO. 121339-01-000

