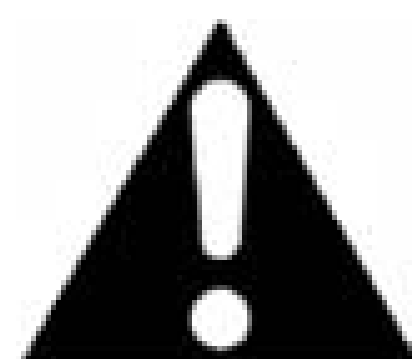




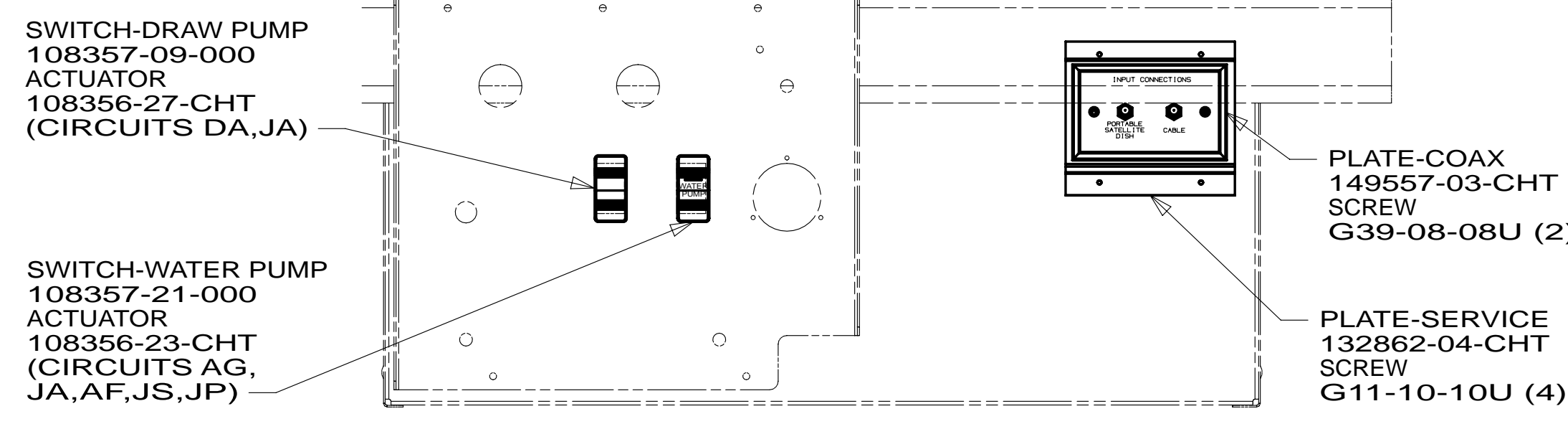
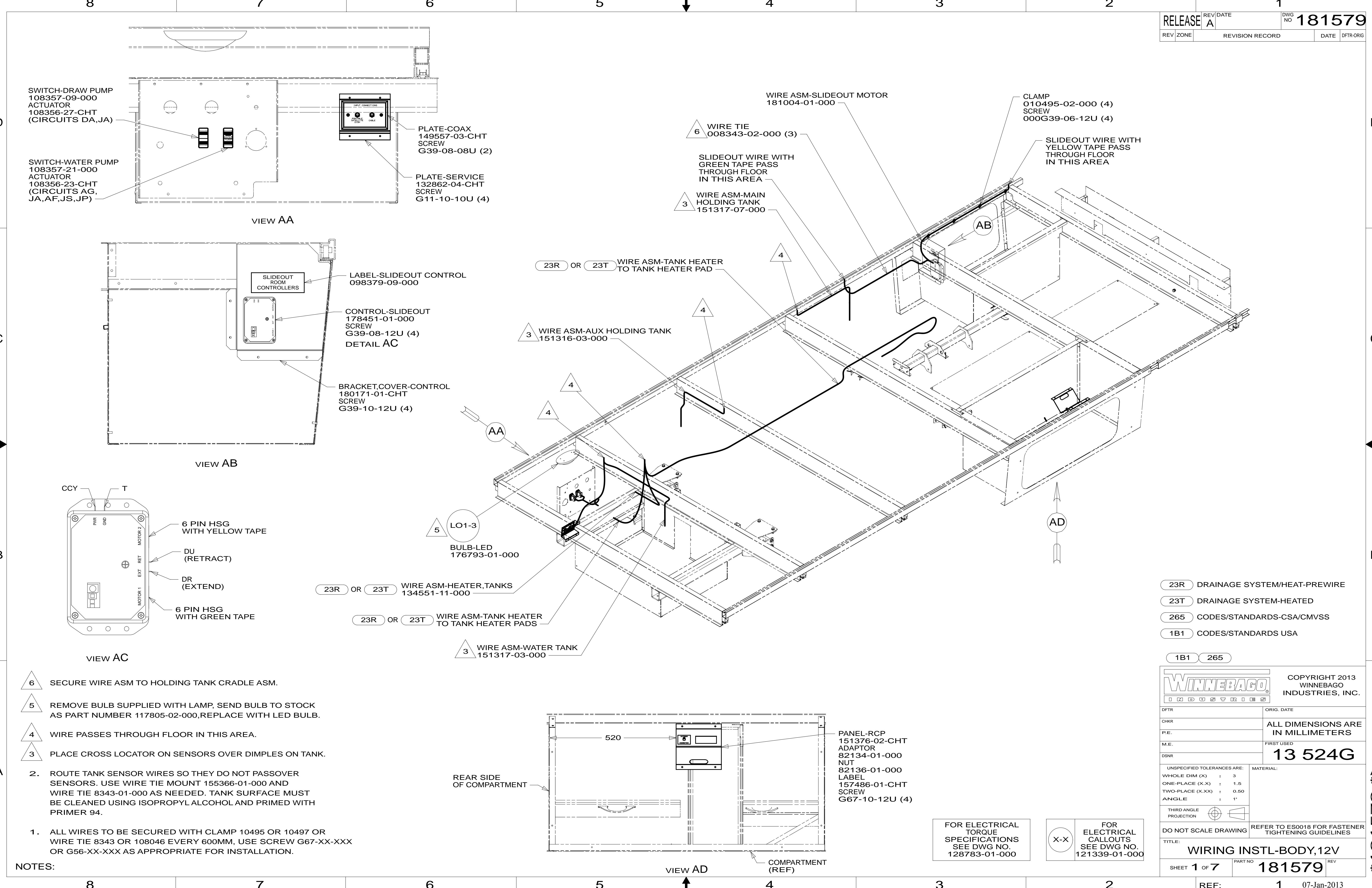
DANGER

Danger of electrical shock, burns or death. Always remove all power sources before attempting any repair, service or diagnostic work. Power can be present from shore power, generator, inverter or battery. All power sources must be disabled and secured before performing any service.

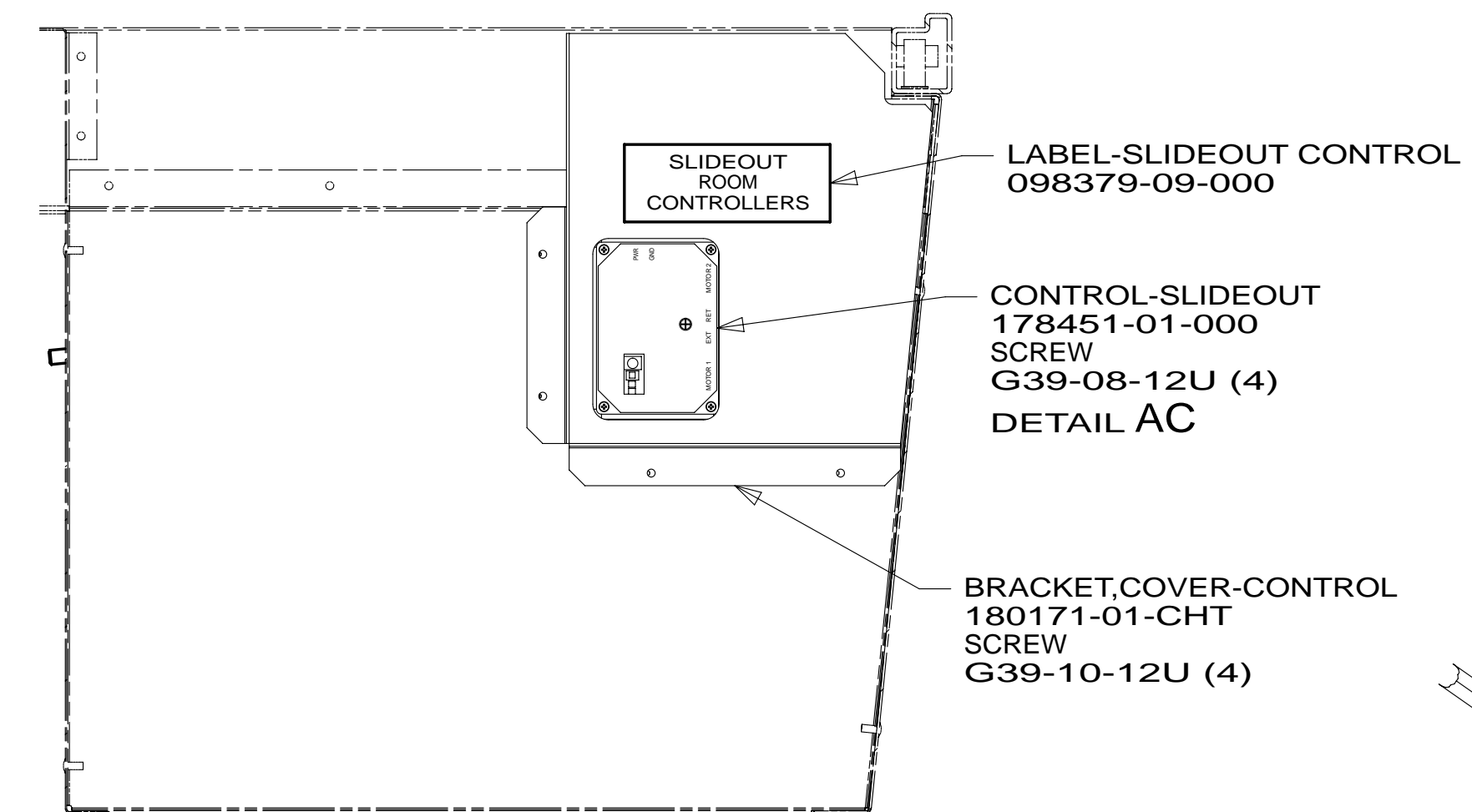


CAUTION

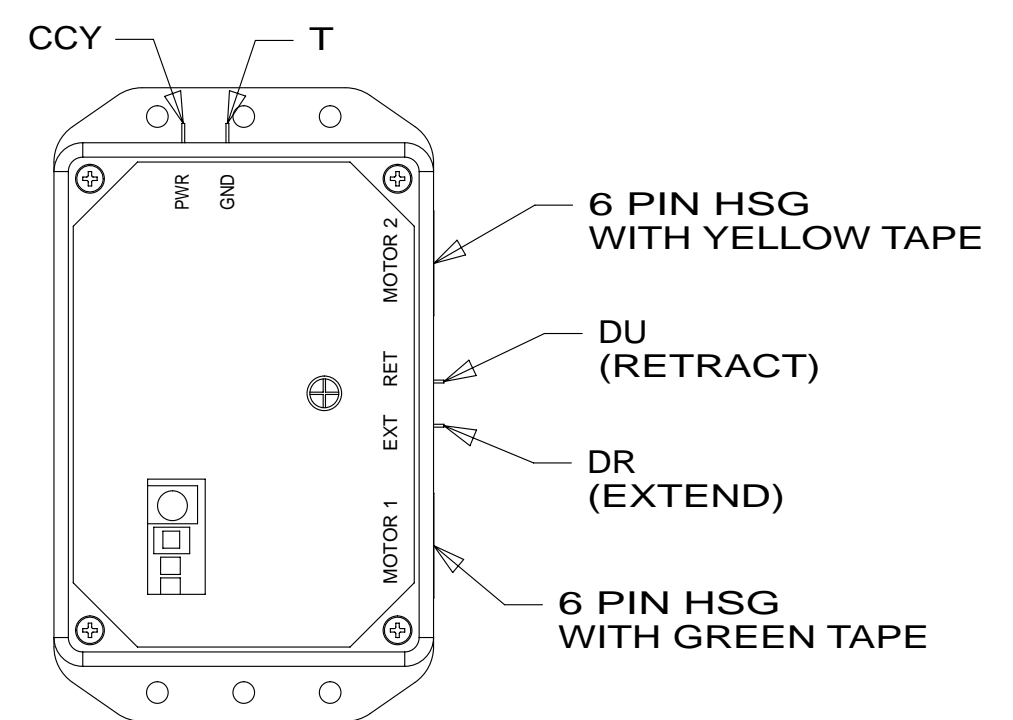
If you lack the skills, tools or equipment to perform diagnostic or repair work leave such work to an authorized Winnebago Industries dealer or other qualified shop.



VIEW AA



VIEW AB



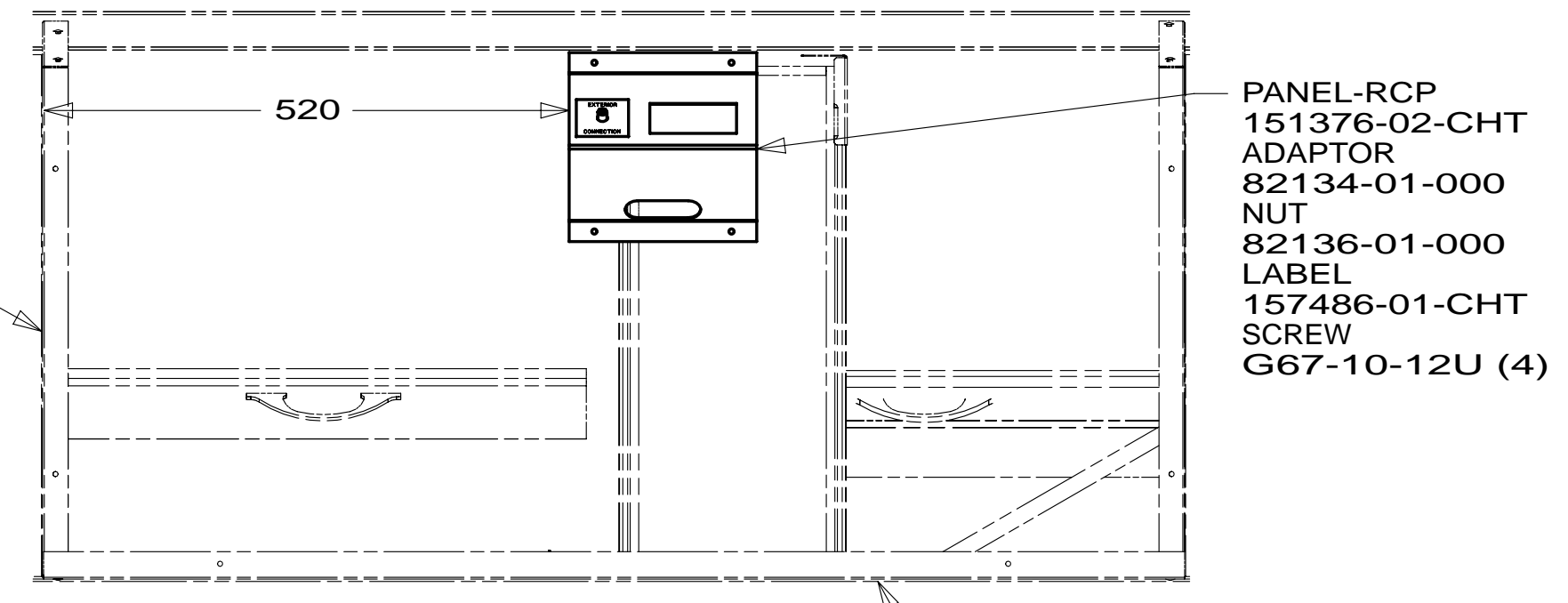
VIEW AC

- 6 SECURE WIRE ASM TO HOLDING TANK CRADLE ASM.
- 5 REMOVE BULB SUPPLIED WITH LAMP, SEND BULB TO STOCK AS PART NUMBER 117805-02-000, REPLACE WITH LED BULB.
- 4 WIRE PASSES THROUGH FLOOR IN THIS AREA.
- 3 PLACE CROSS LOCATOR ON SENSORS OVER DIMPLES ON TANK.

2. ROUTE TANK SENSOR WIRES SO THEY DO NOT PASSOVER SENSORS. USE WIRE TIE MOUNT 155366-01-000 AND WIRE TIE 8343-01-000 AS NEEDED. TANK SURFACE MUST BE CLEANED USING ISOPROPYL ALCOHOL AND PRIMED WITH PRIMER 94.

1. ALL WIRES TO BE SECURED WITH CLAMP 10495 OR 10497 OR WIRE TIE 8343 OR 108046 EVERY 600MM, USE SCREW G67-XX-XXX OR G56-XX-XXX AS APPROPRIATE FOR INSTALLATION.

NOTES:



VIEW AD

- 23R DRAINAGE SYSTEM/HEAT-PREWIRE
- 23T DRAINAGE SYSTEM-HEATED
- 265 CODES/STANDARDS-CSA/CMVSS
- 1B1 CODES/STANDARDS USA

1B1 265

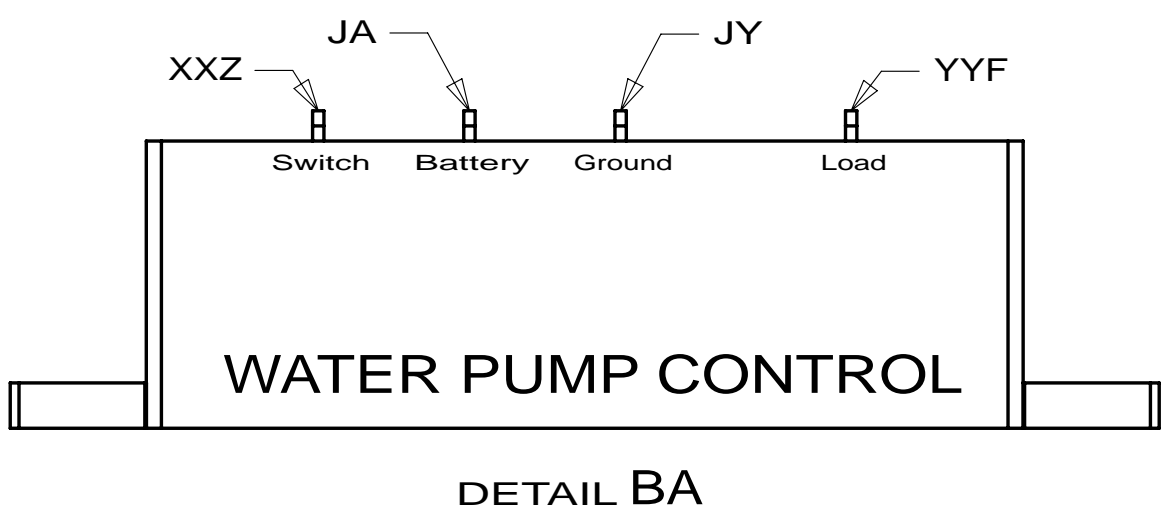


| | |
|-------------------------------------|--|
| DFTR | ORIG. DATE |
| CHKR | ALL DIMENSIONS ARE IN MILLIMETERS |
| P.E. | FIRST USED |
| M.E. | 13 524G |
| DSNR | |
| UNSPECIFIED TOLERANCES ARE: | |
| WHOLE DIM (X) | : 3 |
| ONE-PLACE (X.X) | : 1.5 |
| TWO-PLACE (X.XX) | : 0.50 |
| ANGLE | : 1° |
| THIRD ANGLE PROJECTION | |
| DO NOT SCALE DRAWING | REFER TO ES0018 FOR FASTENER TIGHTENING GUIDELINES |
| TITLE: WIRING INSTL-BODY,12V | |

FOR ELECTRICAL TORQUE SPECIFICATIONS SEE DWG NO. 128783-01-000

FOR ELECTRICAL CALLOUTS SEE DWG NO. 121339-01-000

* 181579 *



23R OR 23T
WIRE ASM-HEATER, RELAY
153891-01-000
RELAY
63912-02-000
SCREW
G11-08-12U

TO SLIDEOUT CONTROL
VIEW DG

2 PIN HSG
TO WATER PUMP

CONTROL-WATER
PUMP
176001-01-000
SCREW
G11-08-12U (2)
DETAIL BA

LIGHT-WARDROBE W/SWITCH
87694-01-000

WIRE ASM-COACH
TO ROOF

TO FURNACE

WIRE ASM-OVHD
182387-01-000

SWITCH
DETAIL ER

LED-2
2

SWITCH
DETAIL EA

SPEAKER
171547-01-CHT (2)
SPACER
178966-01-CHT (2)
SCREW
G67-10-12U (8)

THERMOSTAT
135618-03-CHT 291
135618-01-CHT 29J OR 29Z

TO WIRE ASM-
SIDEWALL

SWITCH
DETAIL EC

SWITCH
DETAIL ET

2 PIN HSG
TO BLACK TANK
SENSOR HARNESS

WIRE ASM-COACH
181693-01-000

SWITCH
DETAIL EJ

WIRE ASM-COACH
TO RIGHT SIDE

- 29J AC HEAT PUMP-1
- 29Z A/C 14,800 - HEAT PUMP
- 291 A/C ROOF-HIGH EFFICIENCY (1)
- 23R DRAINAGE SYSTEM/HEAT-PREWIRE
- 23T DRAINAGE SYSTEM-HEATED
- 265 CODES/STANDARDS-CSA/CMVSS
- 1B1 CODES/STANDARDS USA

| | | | |
|-------------------------------|---------|---------|-----|
| FIRST USED | | 13 524G | |
| DO NOT SCALE DRAWING | | | |
| TITLE: WIRING INSTL-BODY, 12V | | | |
| SHEET 2 | PART NO | 181579 | REV |

FOR ELECTRICAL
TORQUE
SPECIFICATIONS
SEE DWG NO.
128783-01-000

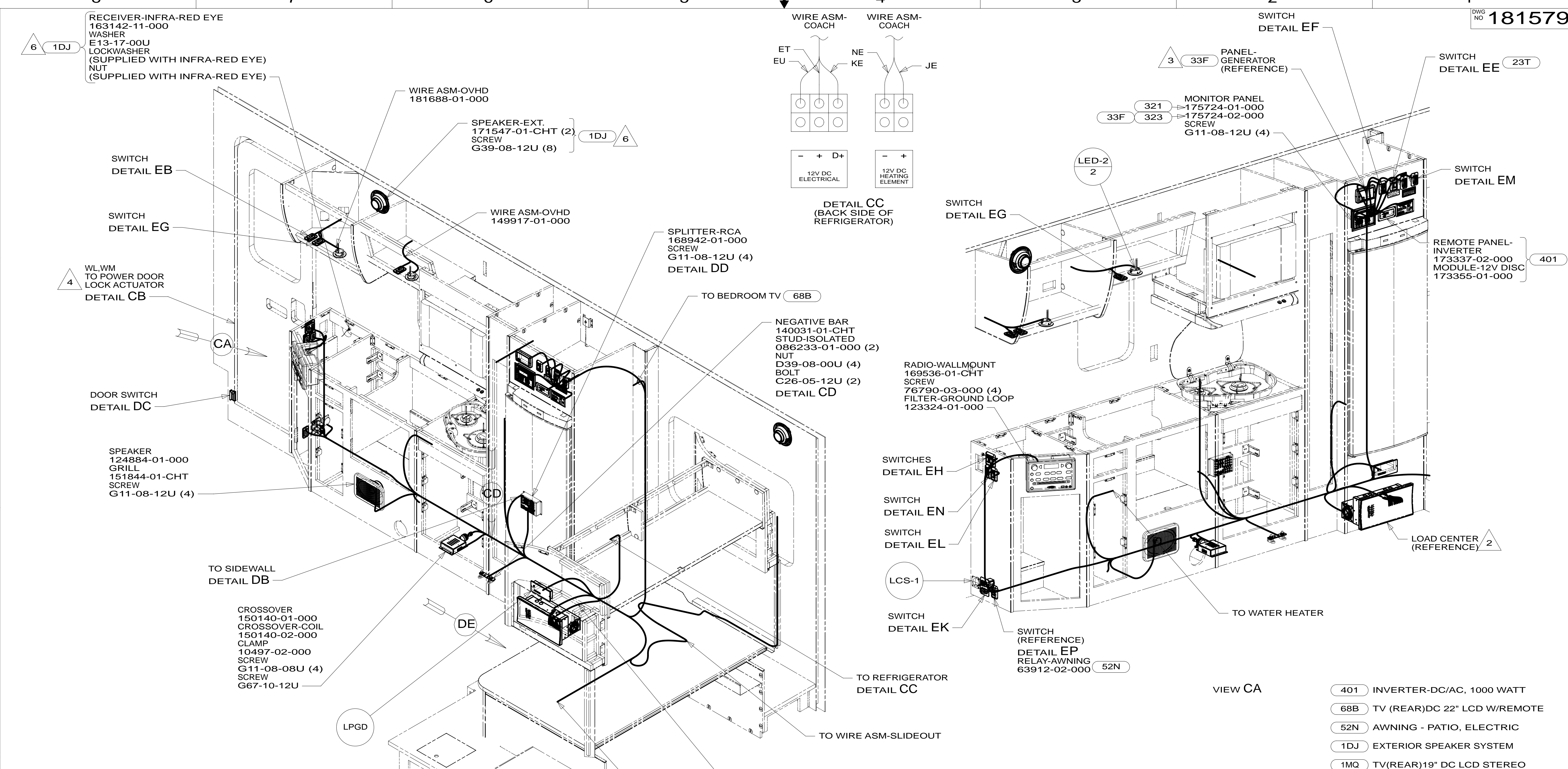
FOR
ELECTRICAL
CALLOUTS
SEE DWG NO.
121339-01-000

- 3 PLACE CROSS LOCATOR ON SENSORS OVER DIMPLES ON TANK.
- 2 WIRE PASSES THROUGH FLOOR IN THIS AREA.

1. ALL WIRES TO BE SECURED WITH CLAMP 10495 OR 10497 OR WIRE TIE 8343 OR 108046 EVERY 600MM, USE SCREW G67-XX-XXX OR G56-XX-XXX AS APPROPRIATE FOR INSTALLATION.

NOTES:

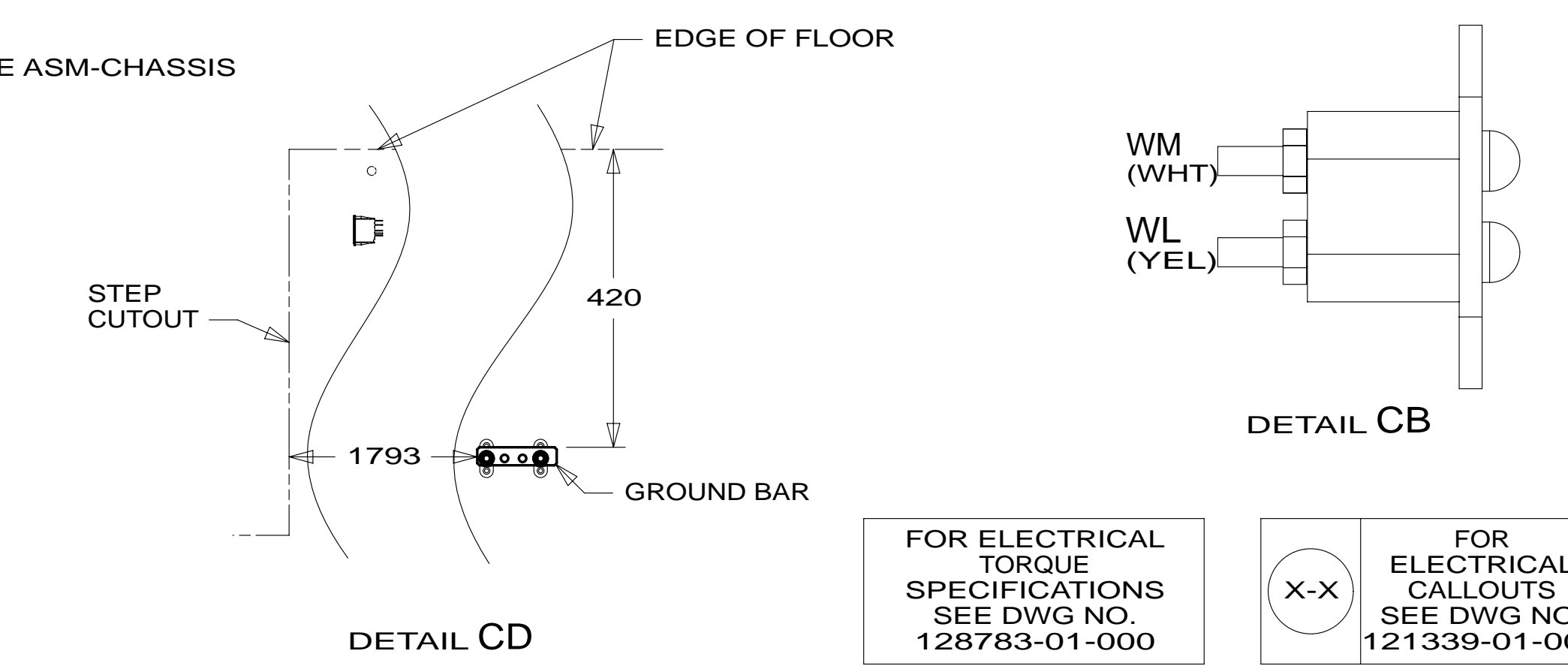
* 181579 * A



- 6 MOUNTED ON EXTERIOR SURFACE OF SIDEWALL.
- 5 REMOVE CIRCULAR MOUNTING BASE FROM SPEAKER. ATTACH MOUNTING BASE TO BACK SIDE OF PANEL ASM-BUNK USING WOOD SCREWS. USE MACHINE SCREW TO ATTACH SPEAKER TO MOUNTING BASE, SANDWICHING PANEL ASM-BUNK BETWEEN SPEAKER AND MOUNTING BASE.
- 4 CIRCUITS ARE PART OF WIRE ASM-SIDEWALL.
- 3 SUPPLIED WITH GENERATOR.
- 2 SEE LOAD CENTER/ATS FOR ADDITIONAL INFORMATION.

1. ALL WIRES TO BE SECURED WITH CLAMP 10495 OR 10497 OR WIRE TIE 8343 OR 108046 EVERY 600MM, USE SCREW G67-XX-XXX OR G56-XX-XXX AS APPROPRIATE FOR INSTALLATION.

NOTES:



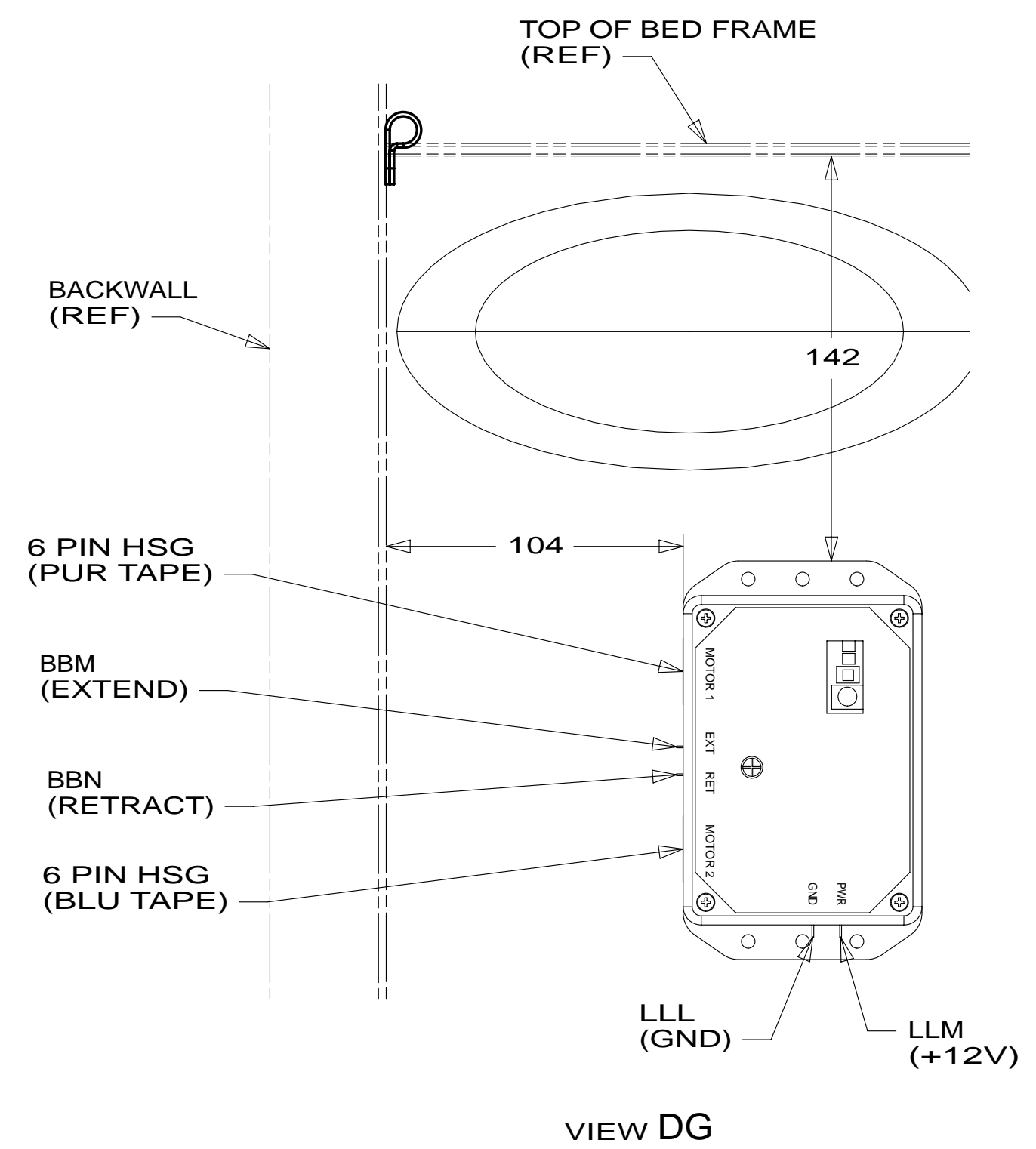
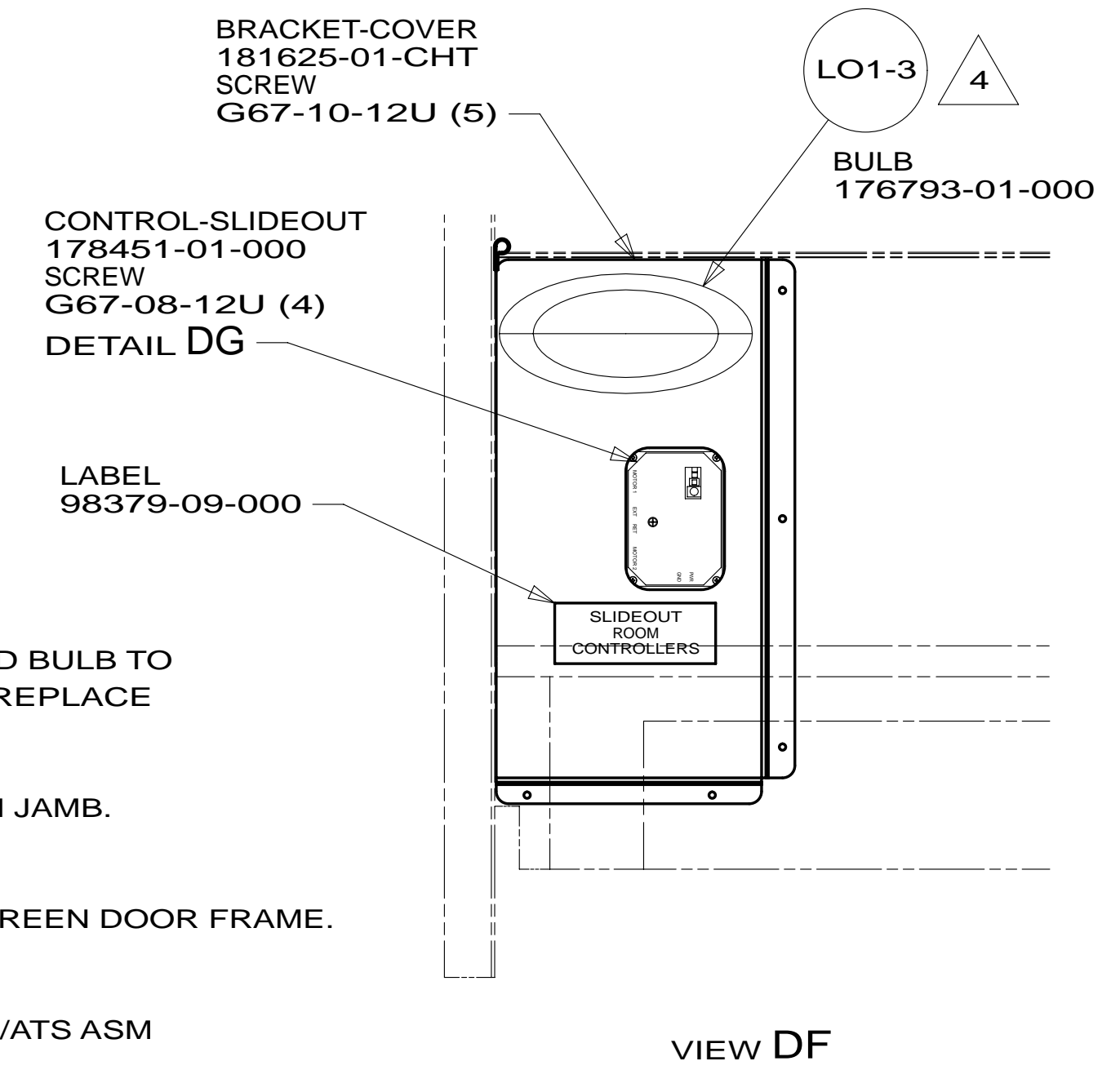
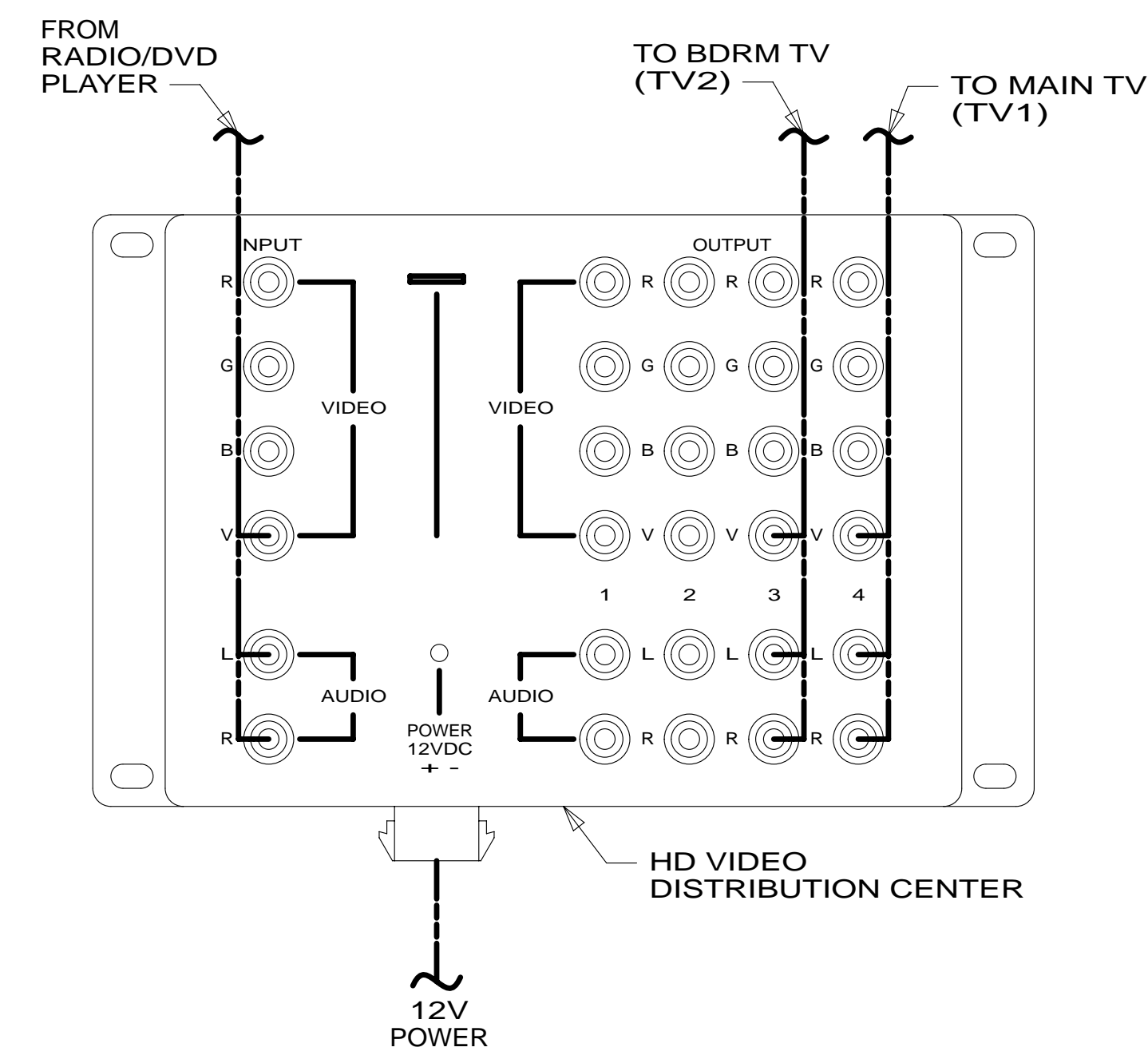
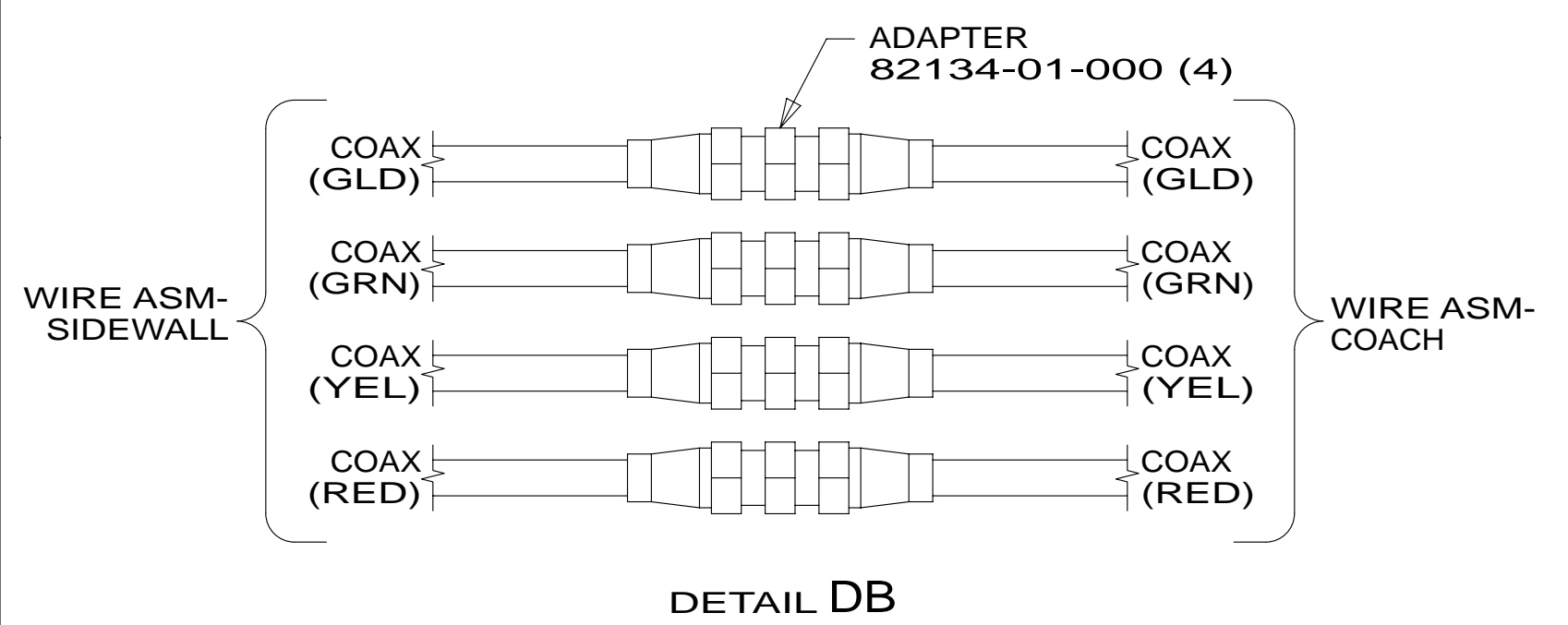
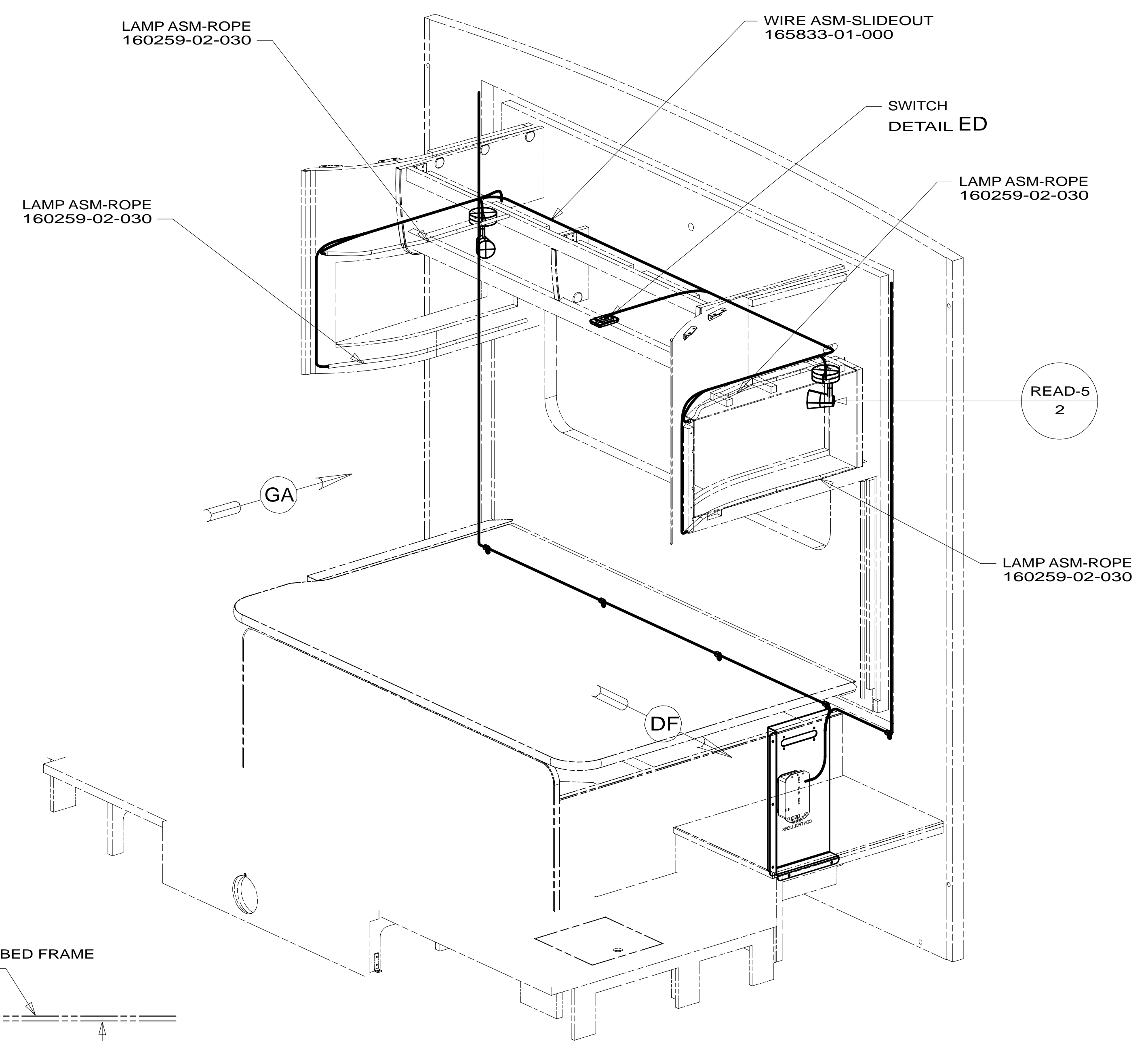
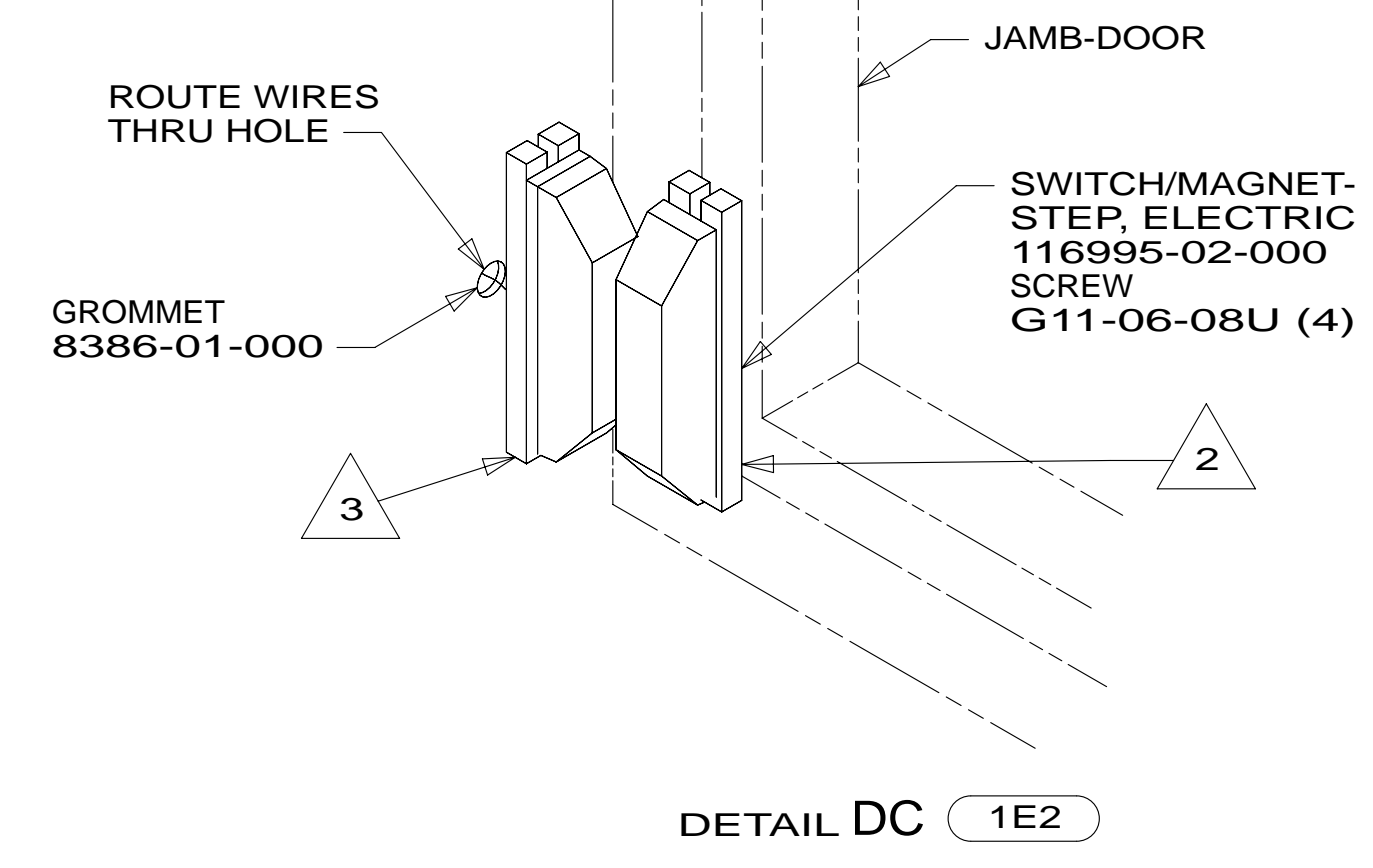
FOR ELECTRICAL TORQUE SPECIFICATIONS SEE DWG NO. 128783-01-000

FOR ELECTRICAL CALLOUTS SEE DWG NO. 121339-01-000

- 401 INVERTER-DC/AC, 1000 WATT
- 68B TV (REAR)DC 22" LCD W/REMOTE
- 52N AWNING - PATIO, ELECTRIC
- 1DJ EXTERIOR SPEAKER SYSTEM
- 1MQ TV(REAR)19" DC LCD STEREO
- 323 GENERATOR PREP KIT - DIESEL
- 321 GENERATOR PREP KIT
- 33F GEN-3.2 KW ONAN DIESEL
- 23T DRAINAGE SYSTEM-HEATED
- 265 CODES/STANDARDS-CSA/CMVSS
- 1B1 CODES/STANDARDS USA

| | |
|-------------------------------------|---------------------------|
| 1B1 | 265 |
| FIRST USED | |
| 13 524G | |
| DO NOT SCALE DRAWING | |
| TITLE: WIRING INSTL-BODY,12V | |
| SHEET 3 | PART NO 181579 REV |
| 07-Jan-2013 | |

* 181579 *



- NOTES:
- 4 REMOVE BULB SUPPLIED WITH LAMP, SEND BULB TO STOCK AS PART NUMBER 117805-02-000, REPLACE WITH LED BULBS.
 - 3 MOUNT SWITCH AND SPACER TO BLOCK ON JAMB. ADJUST HEIGHT TO MATCH MAGNET.
 - 2 MOUNT MAGNET USING PILOT HOLES IN SCREEN DOOR FRAME. MOUNT WITH MAGNET TOWARD SWITCH.
 - 1 FOR REFERENCE ONLY. SEE LOAD CENTER/ATS ASM FOR ADDITIONAL INFORMATION.

- 23T DRAINAGE SYSTEM-HEATED
- 1E2 ENTRANCE STEP-ELEC.
- 265 CODES/STANDARDS-CSA/CMVSS
- 1B1 CODES/STANDARDS USA

FOR ELECTRICAL TORQUE SPECIFICATIONS SEE DWG NO. 128783-01-000

FOR ELECTRICAL CALLOUTS SEE DWG NO. 121339-01-000

FIRST USED

13 524G

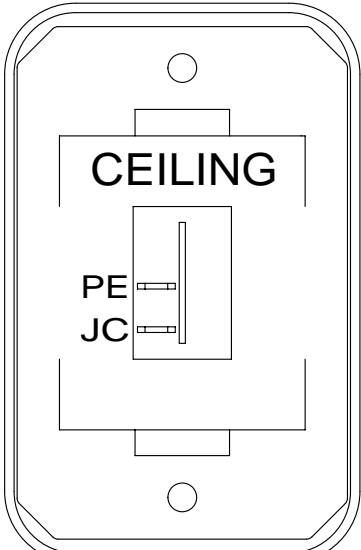
DO NOT SCALE DRAWING

TITLE: **WIRING INSTL-BODY, 12V**

SHEET 4 PART NO **181579** REV

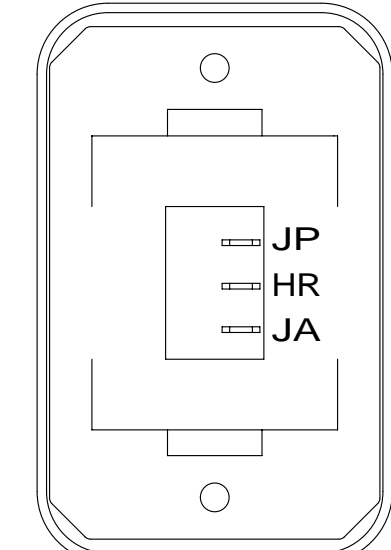
07-Jan-2013

* 181579 *



SWITCH-ROCKER
135740-01-CHT
SWITCH-BASE
135741-01-CHT
SWITCH-BEZEL
135742-07-CHT
SCREW
G11-08-08U (2)

DETAIL EA



SWITCH-BLANK
138253-01-CHT
SWITCH-ROCKER
135740-06-CHT
SWITCH-BASE
135741-01-CHT
SWITCH-BEZEL
135742-01-CHT
SCREW
G11-08-08U (2)
LABEL
134563-01-CHT

DETAIL EE

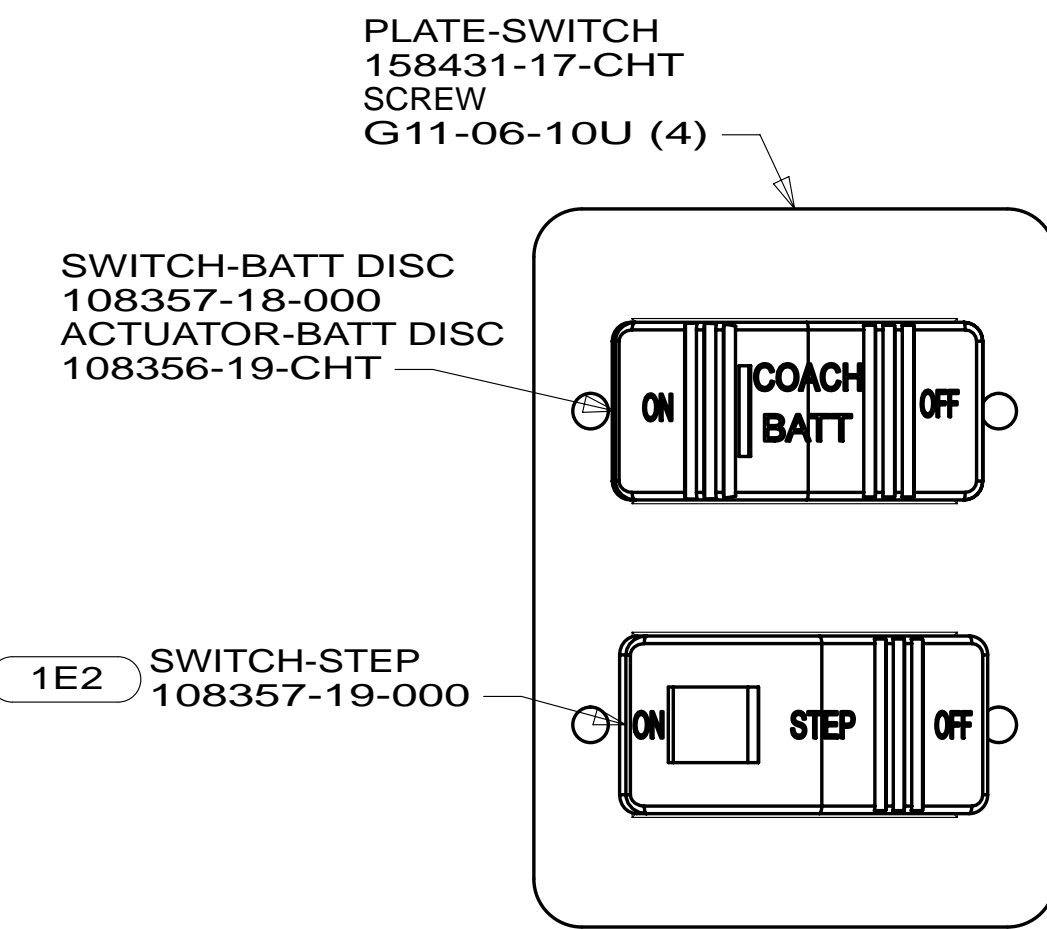
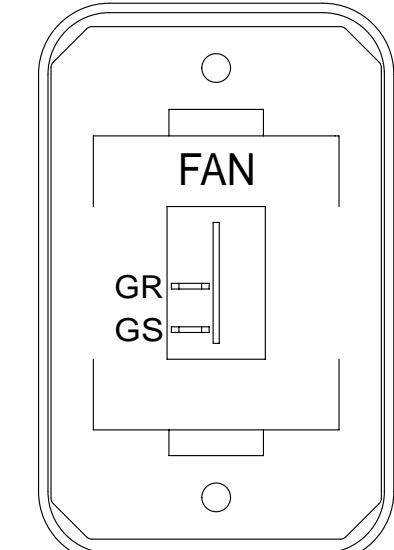


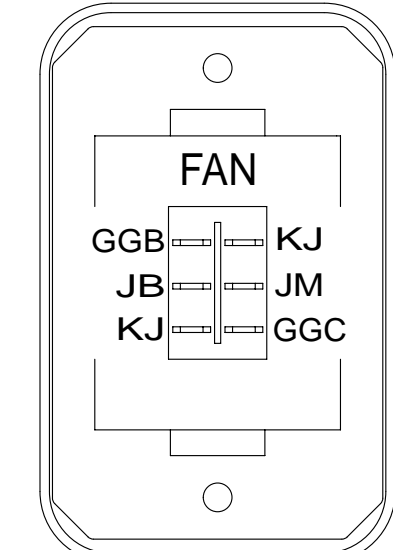
PLATE-SWITCH
158431-17-CHT
SCREW
G11-06-10U (4)

DETAIL EK



SWITCH-ROCKER
135740-01-CHT
SWITCH-BASE
135741-01-CHT
SWITCH-BEZEL
135742-12-CHT
SCREW
G11-08-08U (2)

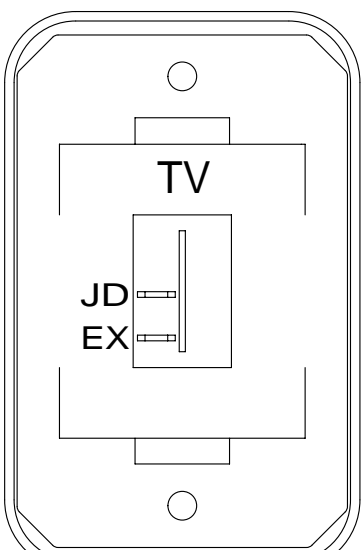
DETAIL EN 710



SWITCH-ROCKER
135740-03-CHT
SWITCH-BASE
135741-01-CHT
SWITCH-BEZEL
135742-12-CHT
SCREW
G11-08-08U (2)

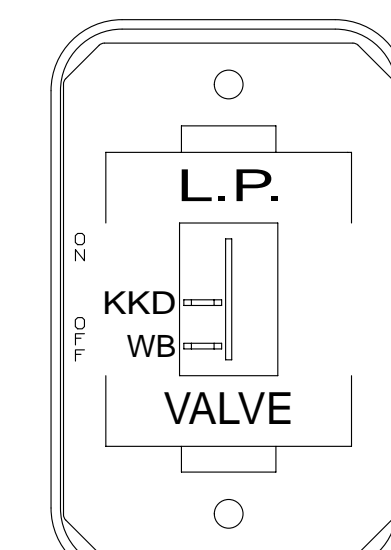
DETAIL EN 316

HOLDING TANK HEATER
TURN OFF When Not In Use
SEE OPERATORS MANUAL



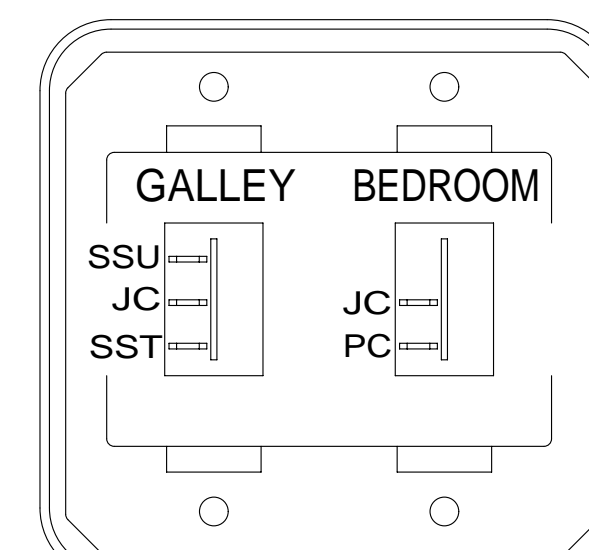
SWITCH-ROCKER
135740-01-CHT
SWITCH-BASE
135741-01-CHT
SWITCH-BEZEL
135742-45-CHT
SCREW
G11-08-08U (2)

DETAIL EB



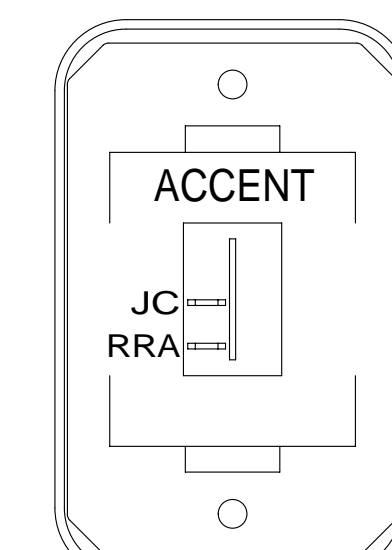
SWITCH-ROCKER
135740-01-CHT
SWITCH-BASE
135741-01-CHT
SWITCH-BEZEL
135742-59-CHT
SCREW
G11-08-08U (2)

DETAIL EF



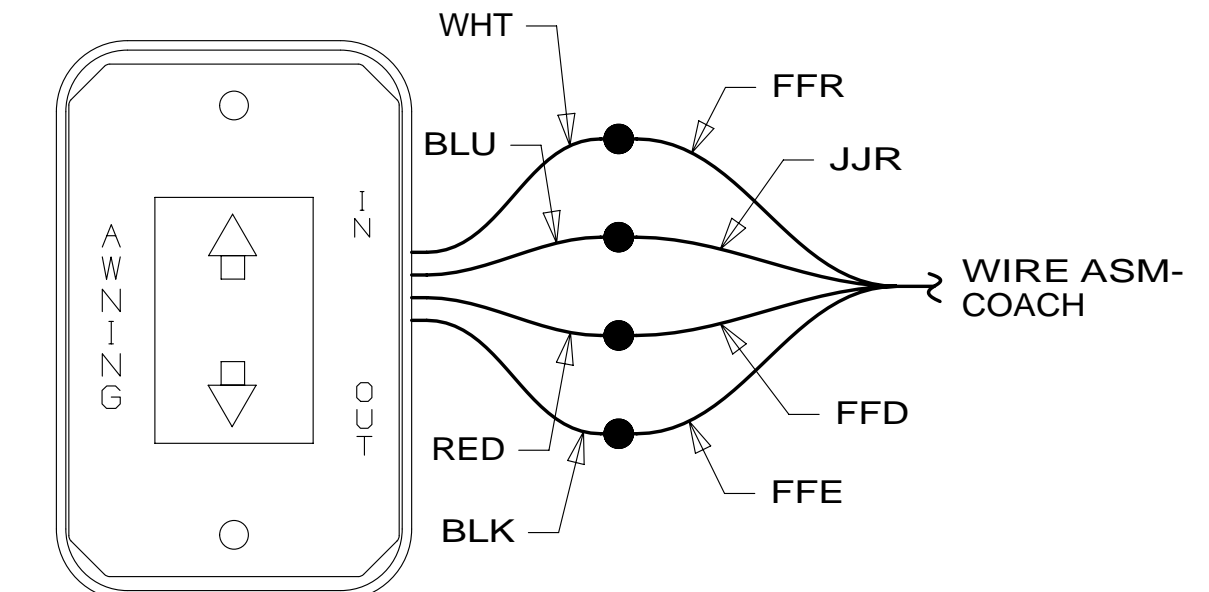
SWITCH-ROCKER
135740-01-CHT
135740-02-CHT
SWITCH-BASE
135741-02-CHT
SWITCH-BEZEL
135742-54-CHT
SCREW
G11-08-08U (4)

DETAIL EJ

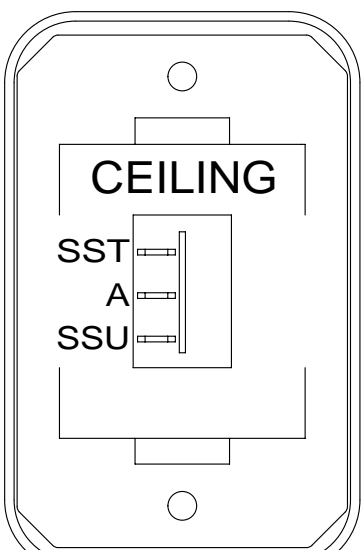


SWITCH-ROCKER
135740-01-CHT
SWITCH-BASE
135741-01-CHT
SWITCH-BEZEL
135742-50-CHT
SCREW
G11-08-08U (2)

DETAIL EL

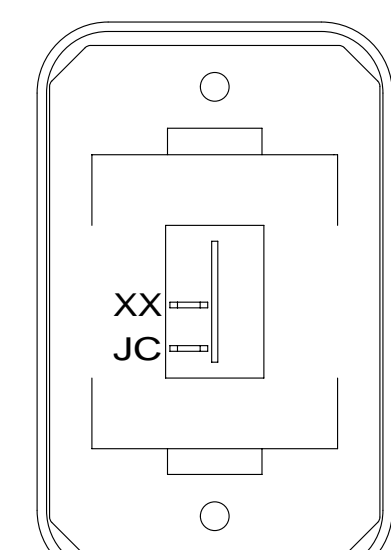


DETAIL EP
(REFERENCE SUPPLIED WITH AWNING)



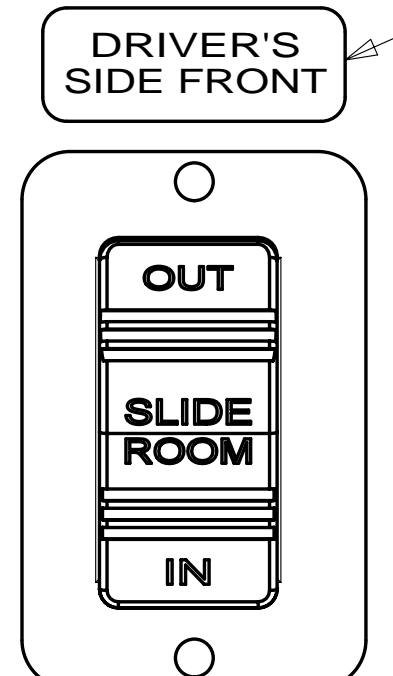
SWITCH-ROCKER
135740-02-CHT
SWITCH-BASE
135741-01-CHT
SWITCH-BEZEL
135742-07-CHT
SCREW
G11-08-08U (2)

DETAIL EC



SWITCH-ROCKER
135740-01-CHT
SWITCH-BASE
135741-01-CHT
SWITCH-BEZEL
135742-01-CHT
SCREW
G11-08-08U (2)

DETAIL EG
(2 PLACES)



LABEL-SLIDEOUT, DRIVER, FRONT
163992-01-CHT

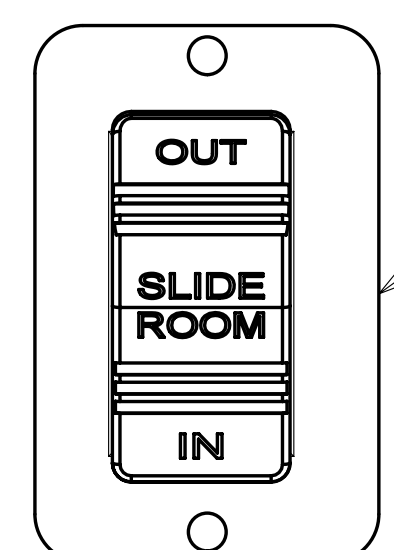
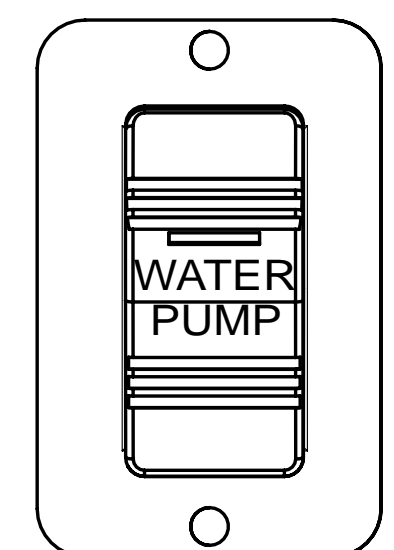
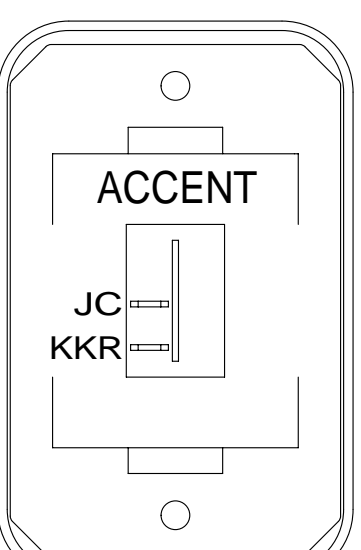


PLATE-SWITCH
144363-02-CHT (2)
SWITCH
108357-06-000 (2)
ACTUATOR
108356-24-CHT (2)
SCREW
G11-06-10U (4)
RELAY
063912-02-000



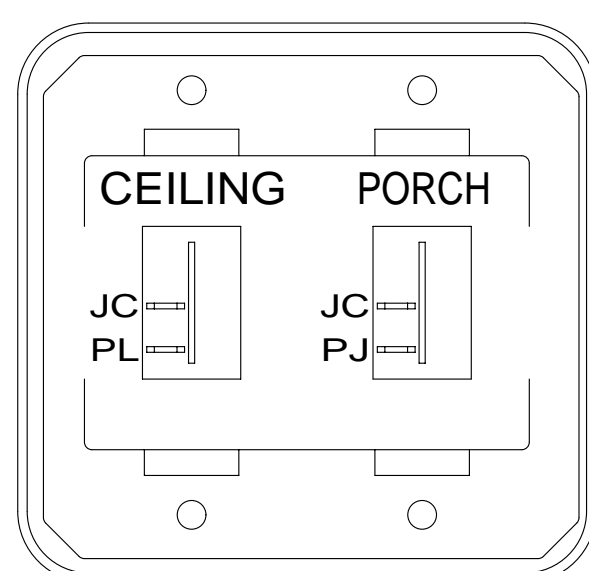
SWITCH
108357-21-000
ACTUATOR
108356-23-CHT
SCREW
G11-06-10U (2)
PLATE-SWITCH
144363-02-CHT

DETAIL ET



SWITCH-ROCKER
135740-01-CHT
SWITCH-BASE
135741-01-CHT
SWITCH-BEZEL
135742-50-CHT
SCREW
G11-08-08U (2)

DETAIL ED



SWITCH-ROCKER
135740-01-CHT (2)
SWITCH-BASE
135741-02-CHT
SWITCH-BEZEL
135742-19-CHT
SCREW
G11-08-08U (4)

DETAIL EH

WARNING
CRUSH HAZARD. Keep people and objects clear of the inside and outside of the slideout room when operating. Failure to comply could result in death or serious injury.

LABEL-WARNING
116549-02-000

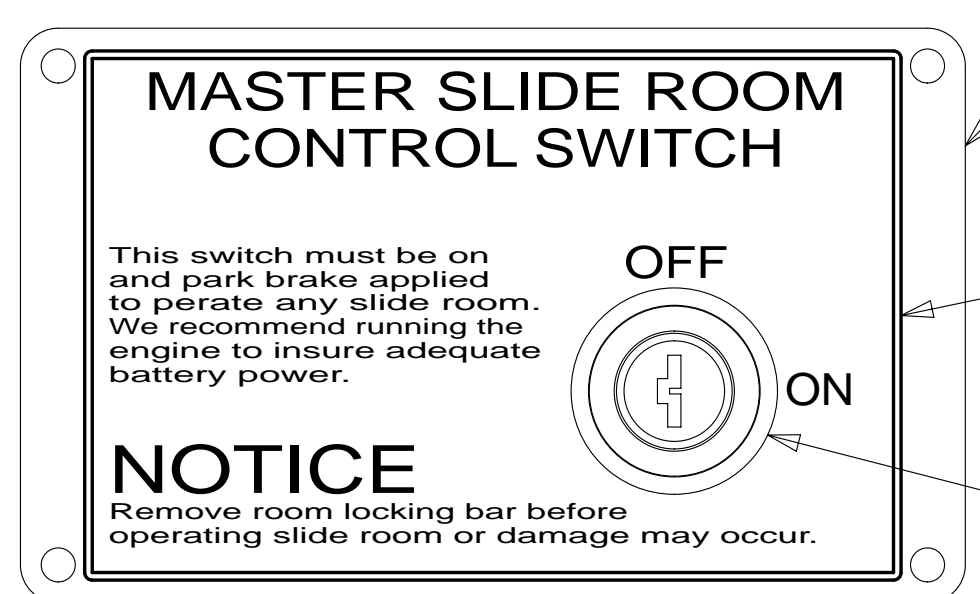
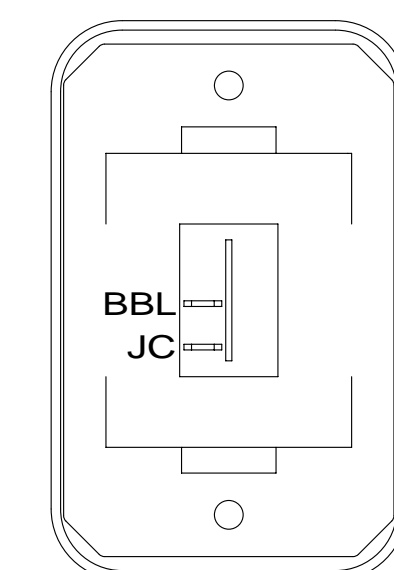


PLATE-KEY, SLIDE ROOM
163987-01-CHT
SCREW
76790-05-000 (4)

LABEL-SLIDROOM CONTROL, MAN
163988-01-CHT

SWITCH-KEY, SPST-ILLINOIS LCK
163097-01-000
(CONNECTS TO CIRCUITS DT & ER)

DETAIL EM



SWITCH-ROCKER
135740-01-CHT
SWITCH-BASE
135741-01-CHT
SWITCH-BEZEL
135742-01-CHT
SCREW
G11-08-08U (2)

DETAIL ER

FOR ELECTRICAL TORQUE SPECIFICATIONS SEE DWG NO. 128783-01-000

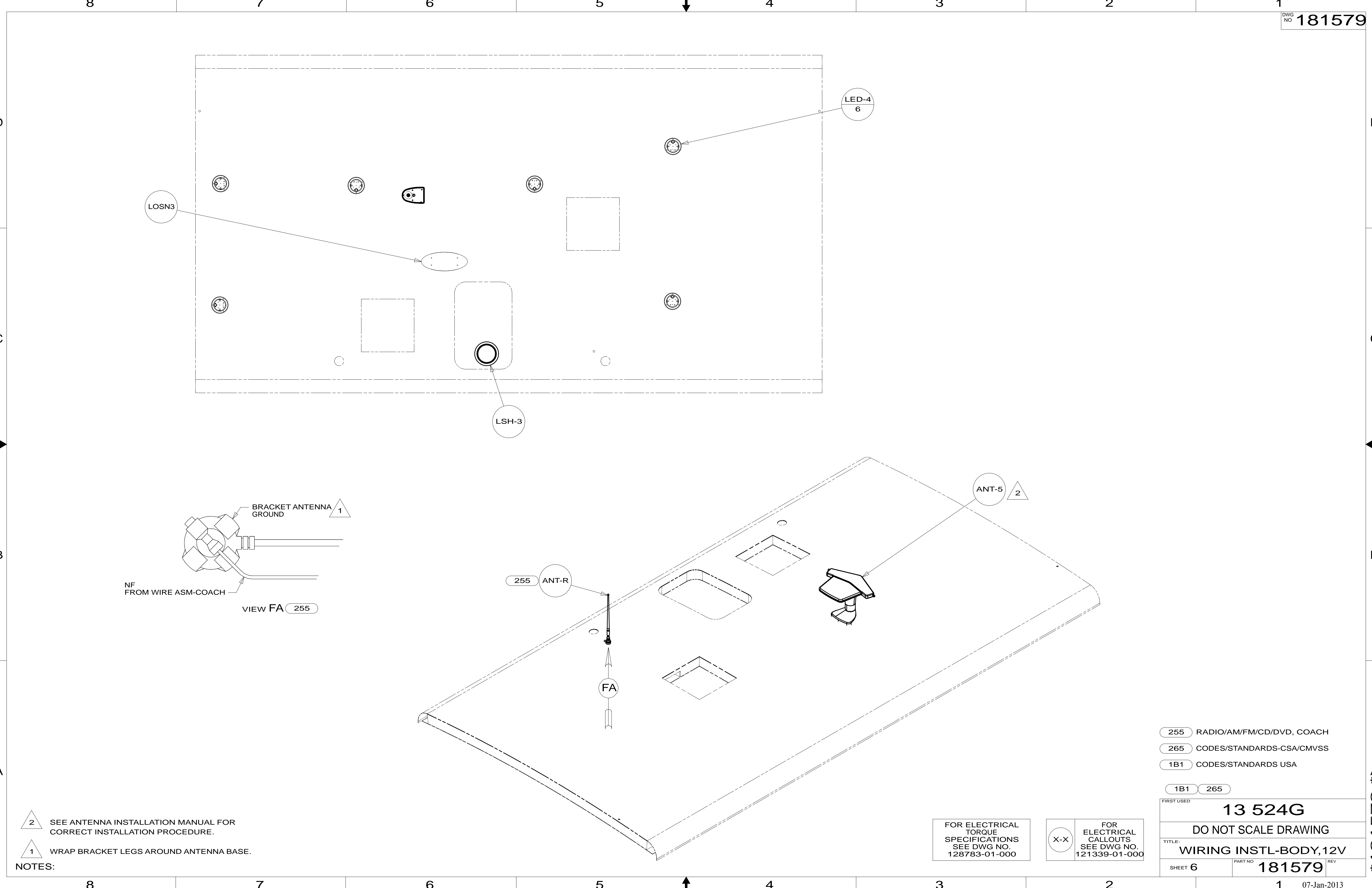
FOR ELECTRICAL CALLOUTS SEE DWG NO. 121339-01-000

- 316 SKYLIGHT/ROOF VENT, POWER
- 710 VENT ROOF-POWERED, INSULATED
- 23R DRAINAGE SYSTEM/HEAT-PREWIRE
- 23T DRAINAGE SYSTEM-HEATED
- 1E2 ENTRANCE STEP-ELEC.
- 265 CODES/STANDARDS-CSA/CMVSS
- 1B1 CODES/STANDARDS USA

| | |
|-------------------------------|--------------------|
| 1B1 | 265 |
| FIRST USED | |
| 13 524G | |
| DO NOT SCALE DRAWING | |
| WIRING INSTL-BODY, 12V | |
| SHEET 5 | PART NO 181579 REV |
| 07-Jan-2013 | |

NOTES:
1 WITHOUT 23T OR 23R

* 181579 A



- NOTES:
- 2 SEE ANTENNA INSTALLATION MANUAL FOR CORRECT INSTALLATION PROCEDURE.
 - 1 WRAP BRACKET LEGS AROUND ANTENNA BASE.

- 255 RADIO/AM/FM/CD/DVD, COACH
- 265 CODES/STANDARDS-CSA/CMVSS
- 1B1 CODES/STANDARDS USA

| | | |
|--------------------------------------|-----------------------|-------------|
| FIRST USED | 13 524G | |
| DO NOT SCALE DRAWING | | |
| TITLE: WIRING INSTL-BODY, 12V | | |
| SHEET 6 | PART NO 181579 | REV |
| | | 07-Jan-2013 |

FOR ELECTRICAL TORQUE SPECIFICATIONS SEE DWG NO. 128783-01-000

FOR ELECTRICAL CALLOUTS SEE DWG NO. 121339-01-000

* 181579 * A

8 7 6 5 4 3 2 1

D

D

C

C

B

B

A

A

→

←

↑

↓

6 PIN HSG TO SLIDEOUT MOTOR WITH PURPLE TAPE

6 PIN HSG TO SLIDEOUT MOTOR WITH BLUE TAPE

6 PIN HSG TO SLIDEOUT MOTOR WITH GREEN TAPE

6 PIN HSG TO SLIDEOUT MOTOR WITH YELLOW TAPE

WIRE ROUTED BELOW FLOOR ASM-SLIDEOUT IN THIS AREA

WIRE ROUTED BELOW FLOOR ASM-SLIDEOUT IN THIS AREA

WIRE ROUTED BELOW FLOOR ASM-SLIDEOUT IN THIS AREA

WIRE ROUTED BELOW FLOOR ASM-SLIDEOUT IN THIS AREA

WIRE ASM-SLIDEOUT MOTOR 181004-02-000

WIRE ASM-SLIDEOUT MOTOR (REFERENCE)

CLAMP 10495-01-000 (5)
SCREW G39-06-12U (5)

TO SLIDEOUT CONTROL

VIEW GA

VIEW GB

WIRE PASSES THROUGH FLOOR IN THIS AREA

WIRE PASSES THROUGH FLOOR IN THIS AREA

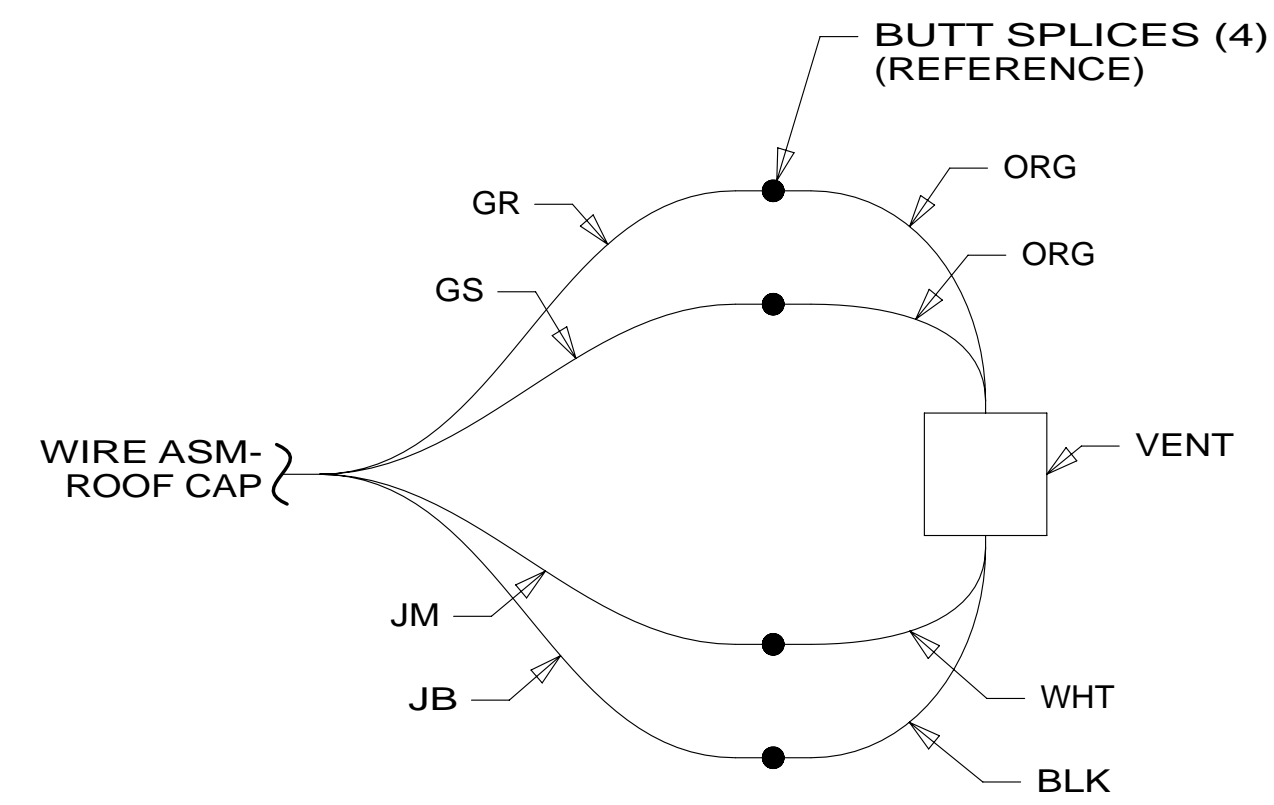
TO VENT
DETAIL GD

TO WIRE ASM-ROOF

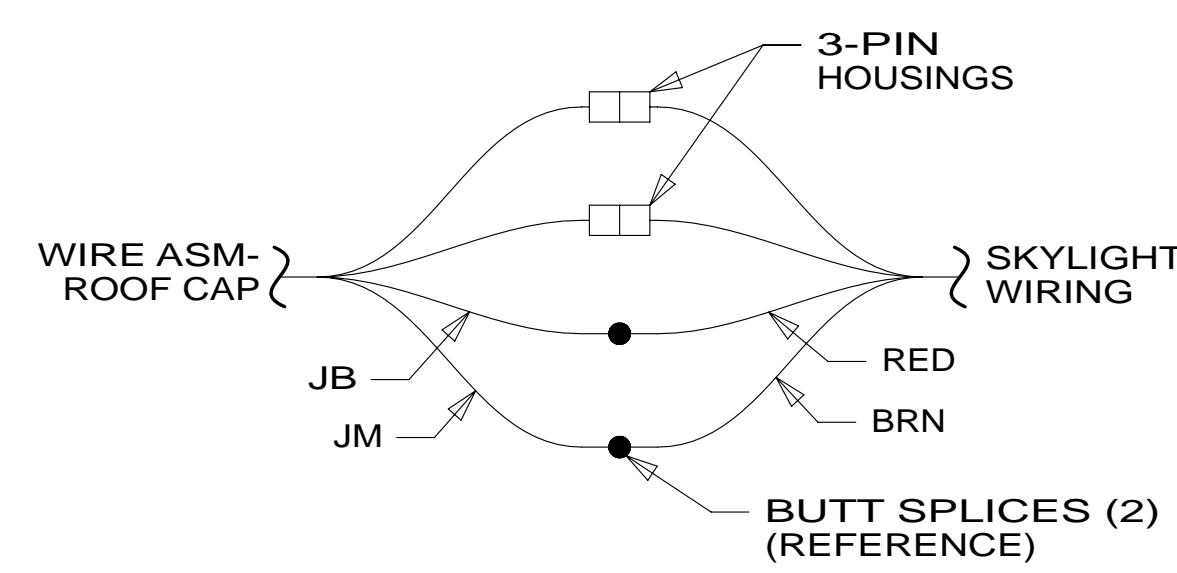
SPEAKER-ROUND,CEILING 160868-01-CHT (2)
GRILLE 160868-02-CHT (2)

LED-2
2

WIRE ASM-181049-01-000



DETAIL GD 710



DETAIL GD 316

HOLE IN FLOOR ASM-UPPER

3 CLAMP 10495-01-000
SCREW G39-06-16U

WIRE ROUTED BELOW FLOOR ASM-SLIDEOUT IN THIS AREA

CLAMP 10495-01-000
SCREW G39-06-16U

FLOOR ASM-SLIDEOUT (REF)

SIDEWALL ASM-LEFT (REF)

VIEW GC

- 3 CLAMP TO BE ATTACHED TO EDGE OF SLIDEOUT FLOOR.
- 2 WIRE PASSES THROUGH FLOOR IN THIS AREA.

1. ALL WIRES TO BE SECURED WITH CLAMP 10495 OR 10497 OR WIRE TIE 8343 OR 108046 EVERY 600MM, USE SCREW G67-XX-XXX OR G56-XX-XXX AS APPROPRIATE FOR INSTALLATION.

NOTES:

FOR ELECTRICAL TORQUE SPECIFICATIONS SEE DWG NO. 128783-01-000

FOR ELECTRICAL CALLOUTS SEE DWG NO. 121339-01-000

- 710 VENT ROOF-POWERED,INSULATED
- 316 SKYLIGHT/ROOF VENT, POWER
- 265 CODES/STANDARDS-CSA/CMVSS
- 1B1 CODES/STANDARDS USA

| | | |
|------------|------------------------------|-----|
| FIRST USED | 13 524G | |
| TITLE | DO NOT SCALE DRAWING | |
| TITLE | WIRING INSTL-BODY,12V | |
| SHEET 7 | PART NO 181579 | REV |

8 7 6 5 4 3 2 1 07-Jan-2013

* 181579 *