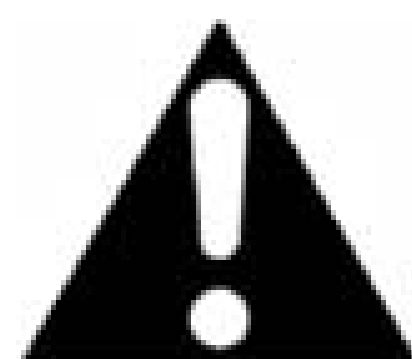




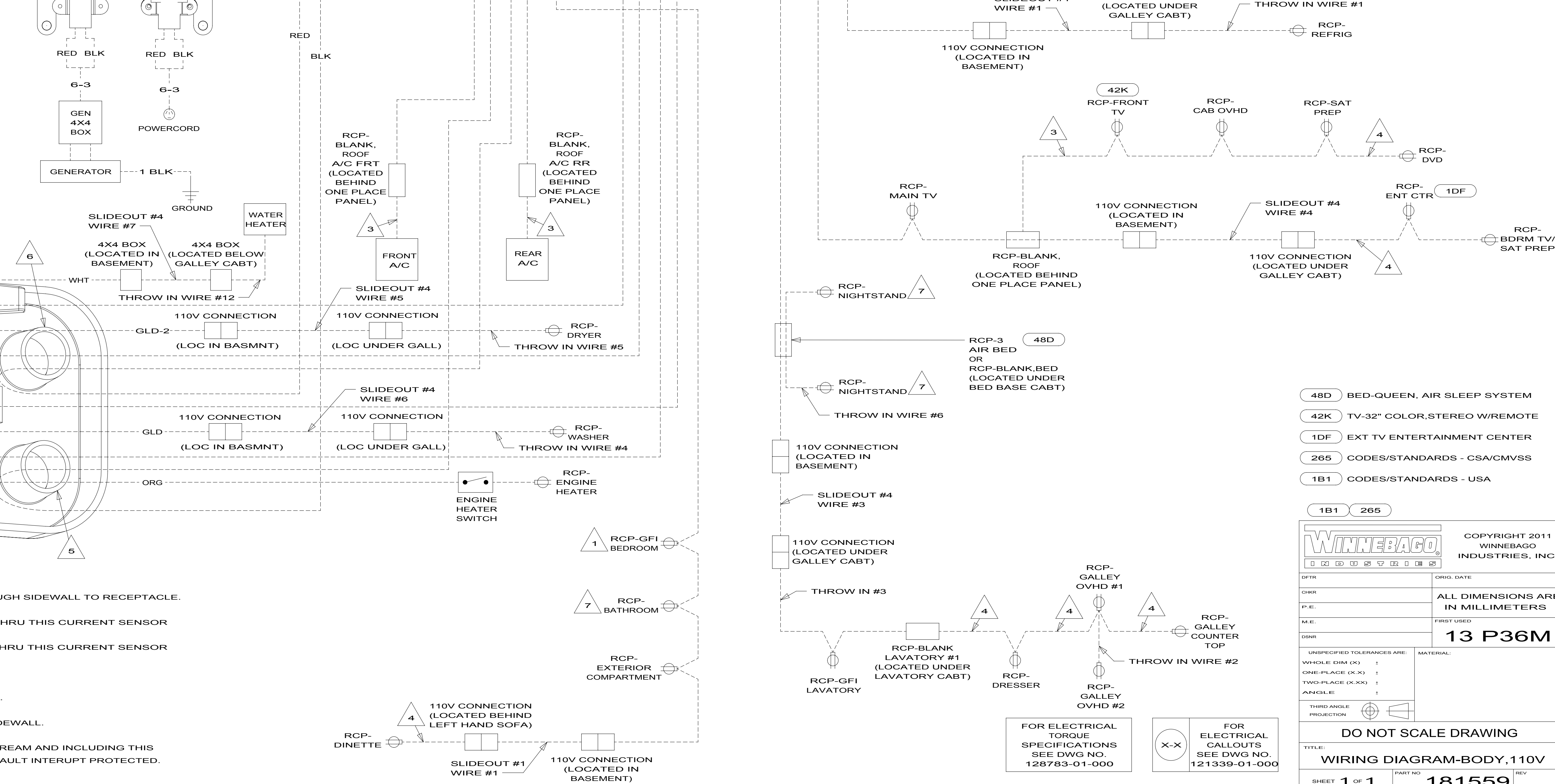
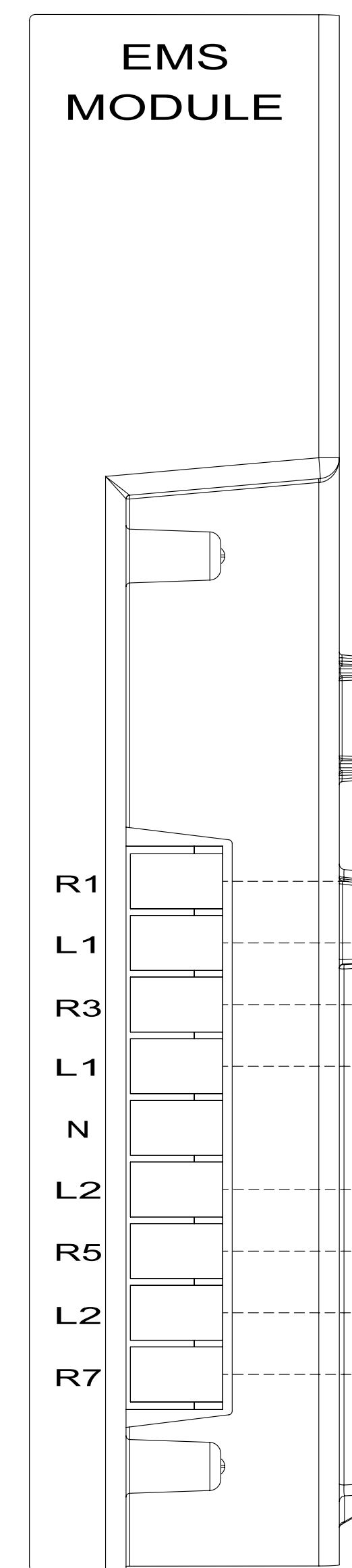
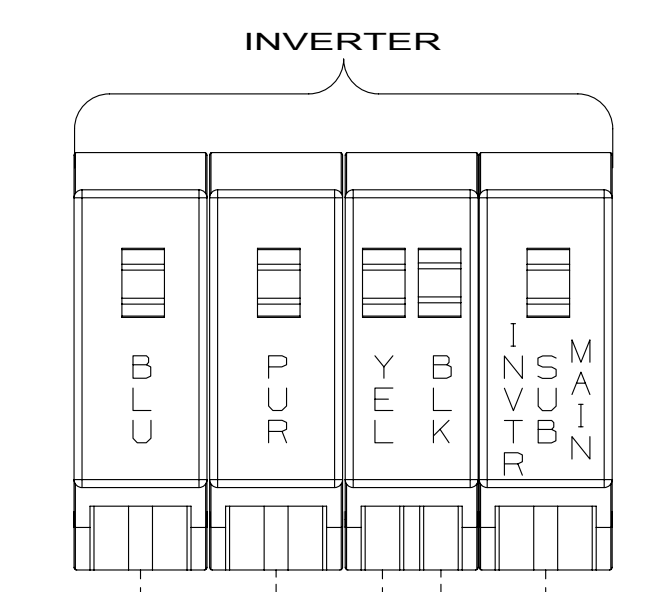
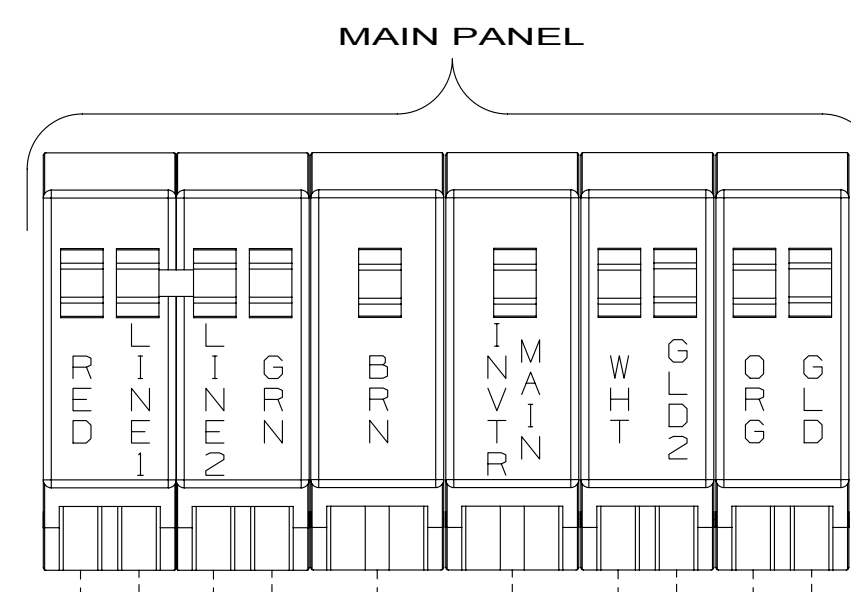
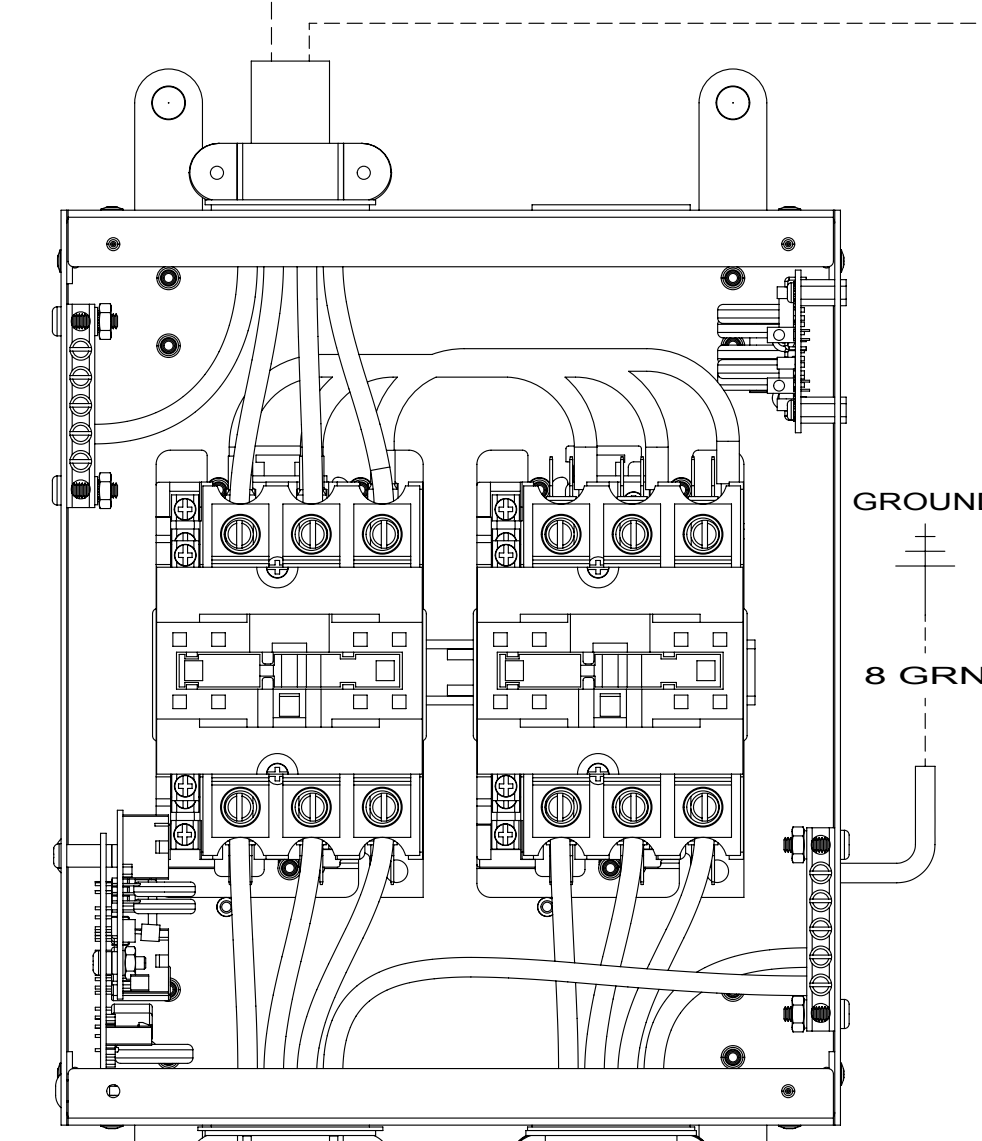
**DANGER**

**Danger of electrical shock, burns or death.** Always remove all power sources before attempting any repair, service or diagnostic work. Power can be present from shore power, generator, inverter or battery. All power sources must be disabled and secured before performing any service.



**CAUTION**

If you lack the skills, tools or equipment to perform diagnostic or repair work leave such work to an authorized Winnebago Industries dealer or other qualified shop.



- NOTES:
- 7 WIRE IS PUSHED THROUGH SIDEWALL TO RECEPTACLE.
  - 6 LINE 2 (RED) ROUTED THRU THIS CURRENT SENSOR
  - 5 LINE 1 (BLK) ROUTED THRU THIS CURRENT SENSOR
  - 4 WIRE IN SIDEWALL
  - 3 WIRE ROUTED IN ROOF.
  - 2 WIRE ROUTED THRU SIDEWALL.
  - 1 ALL OUTLETS DOWN STREAM AND INCLUDING THIS OUTLET ARE GROUND GAULT INTERRUPT PROTECTED.

- 48D BED-QUEEN, AIR SLEEP SYSTEM
- 42K TV-32" COLOR, STEREO W/REMOTE
- 1DF EXT TV ENTERTAINMENT CENTER
- 265 CODES/STANDARDS - CSA/CMVSS
- 1B1 CODES/STANDARDS - USA

FOR ELECTRICAL TORQUE SPECIFICATIONS SEE DWG NO. 128783-01-000

FOR ELECTRICAL CALLOUTS SEE DWG NO. 121339-01-000

**WINNEBAGO** INDUSTRIES

COPYRIGHT 2011 WINNEBAGO INDUSTRIES, INC.

DFT-ORIG	ORIG. DATE
CHKR	ALL DIMENSIONS ARE IN MILLIMETERS
P.E.	FIRST USED
M.E.	
DSNR	<b>13 P36M</b>

UNSPECIFIED TOLERANCES ARE:

WHOLE DIM (X)	MATERIAL:
ONE-PLACE (X.X)	
TWO-PLACE (X.XX)	
ANGLE	

THIRD ANGLE PROJECTION

**DO NOT SCALE DRAWING**

TITLE: **WIRING DIAGRAM-BODY, 110V**

SHEET **1** OF **1** PART NO **181559** REV

REF: **1** 10/24/2011