



DANGER

Danger of electrical shock, burns or death. Always remove all power sources before attempting any repair, service or diagnostic work. Power can be present from shore power, generator, inverter or battery. All power sources must be disabled and secured before performing any service.

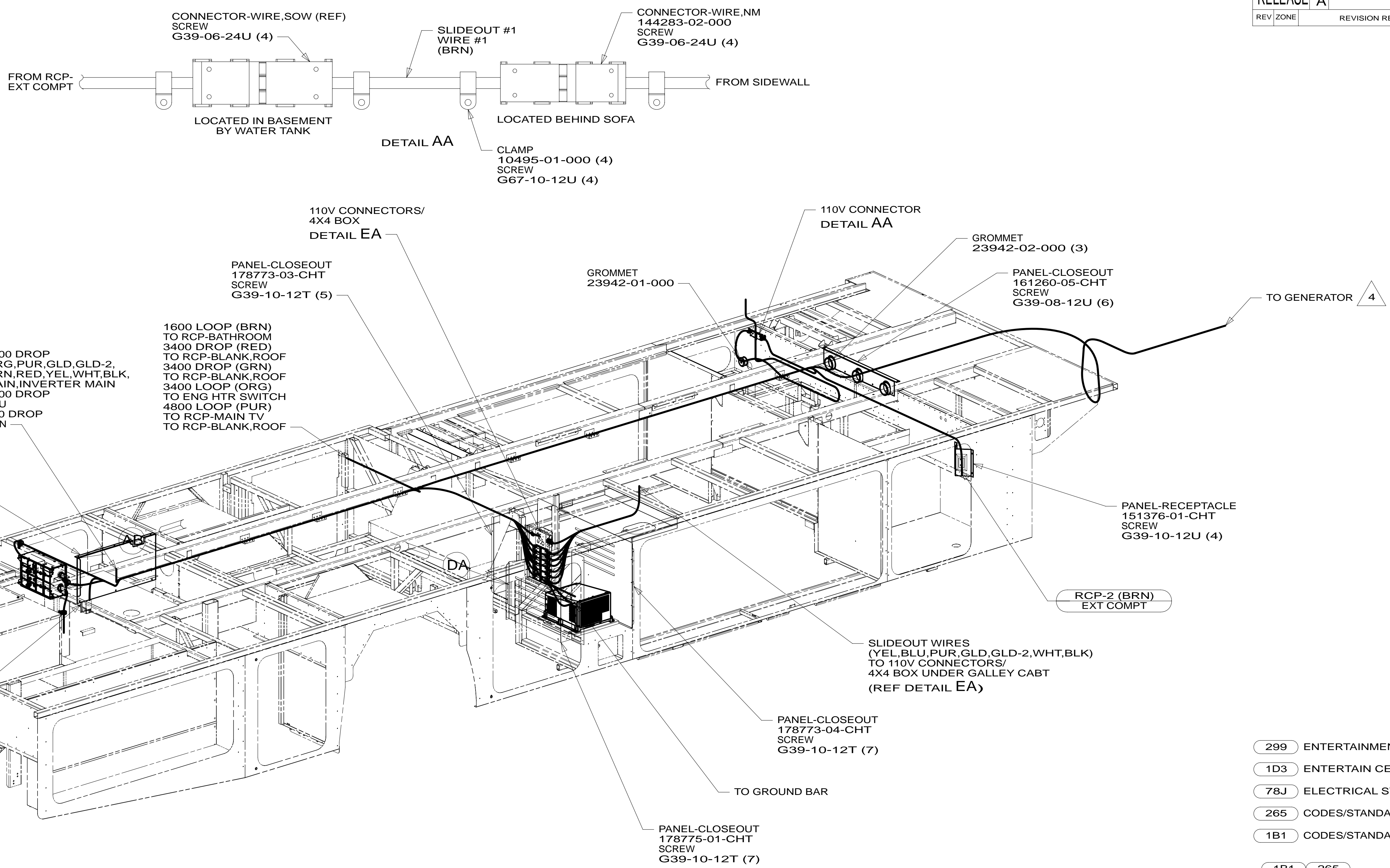


CAUTION

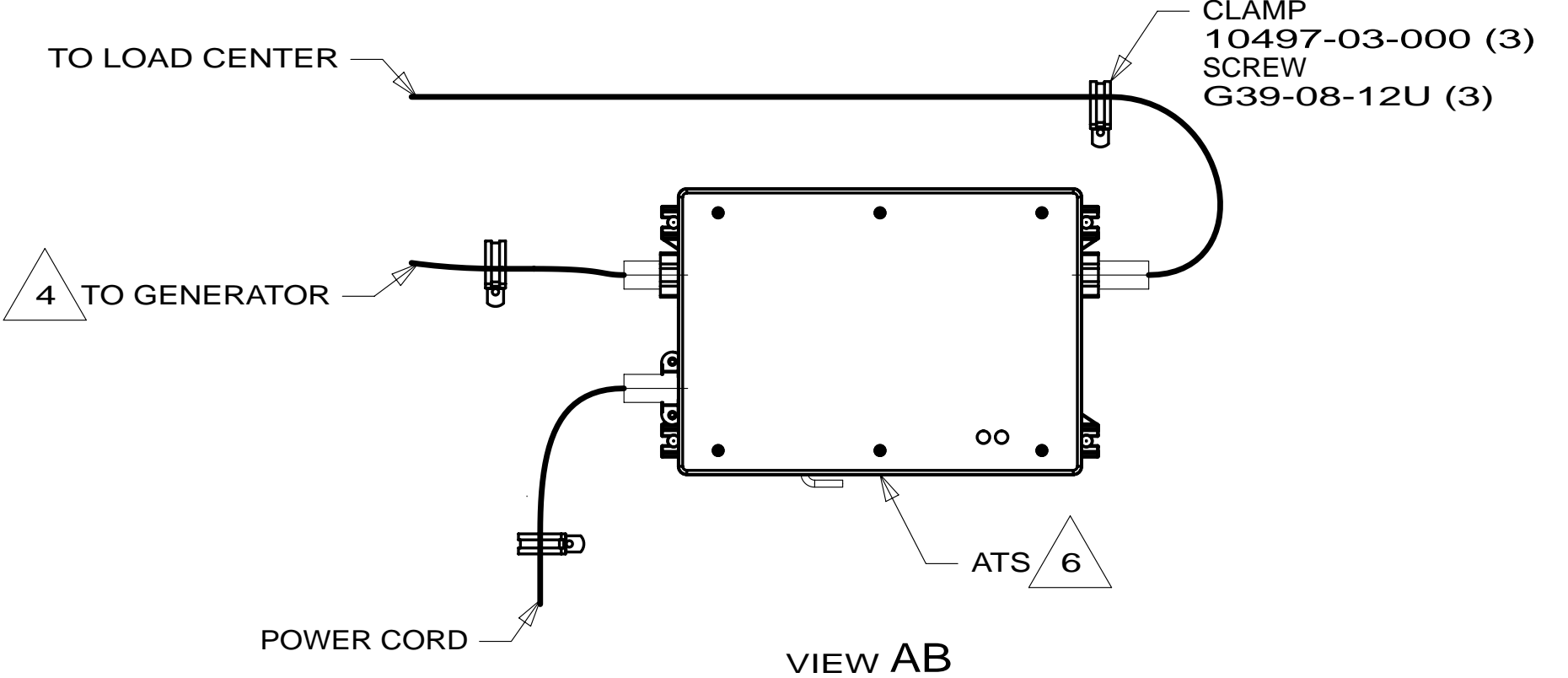
If you lack the skills, tools or equipment to perform diagnostic or repair work leave such work to an authorized Winnebago Industries dealer or other qualified shop.

DRAWING NO.	FEATURES
181558-01	-----
181558-12	1B1 78J
181558-16	265 78J

RELEASE	REV/DATE	DWG NO	181558
REV ZONE	REVISION RECORD	DATE	DFT-ORIG



- 6 SEE LOAD CENTER/ATS ASM FOR ADDITIONAL INFORMATION.
- 5 TO ABOVE FLOOR.
- 4 SEE GENERATOR INSTL FOR ADDITIONAL INFORMATION.
3. WIRES THAT REST ON WIRE TRAYS ARE TO BE TIED DOWN WITH WIRE TIE 8343-04-000.
2. CLAMP TO FLOOR SUPPORT TUBES AS NECESSARY WITH CLAMP 10497-01-000.
1. ALL WIRES TO BE SECURED WITH CLAMP 10495 OR 10497 OR WIRE TIE 8343 OR 108046 EVERY 600 MM. USE SCREW G67-XX-XXX OR G56-XX-XXX AS APPROPRIATE FOR INSTALLATION.



- 299 ENTERTAINMENT CENTER EXT.W/O
- 1D3 ENTERTAIN CENTR/EXT TV-DVD
- 78J ELECTRICAL SYSTEM-50 AMP
- 265 CODES/STANDARDS-CSA/CMVSS
- 1B1 CODES/STANDARDS USA

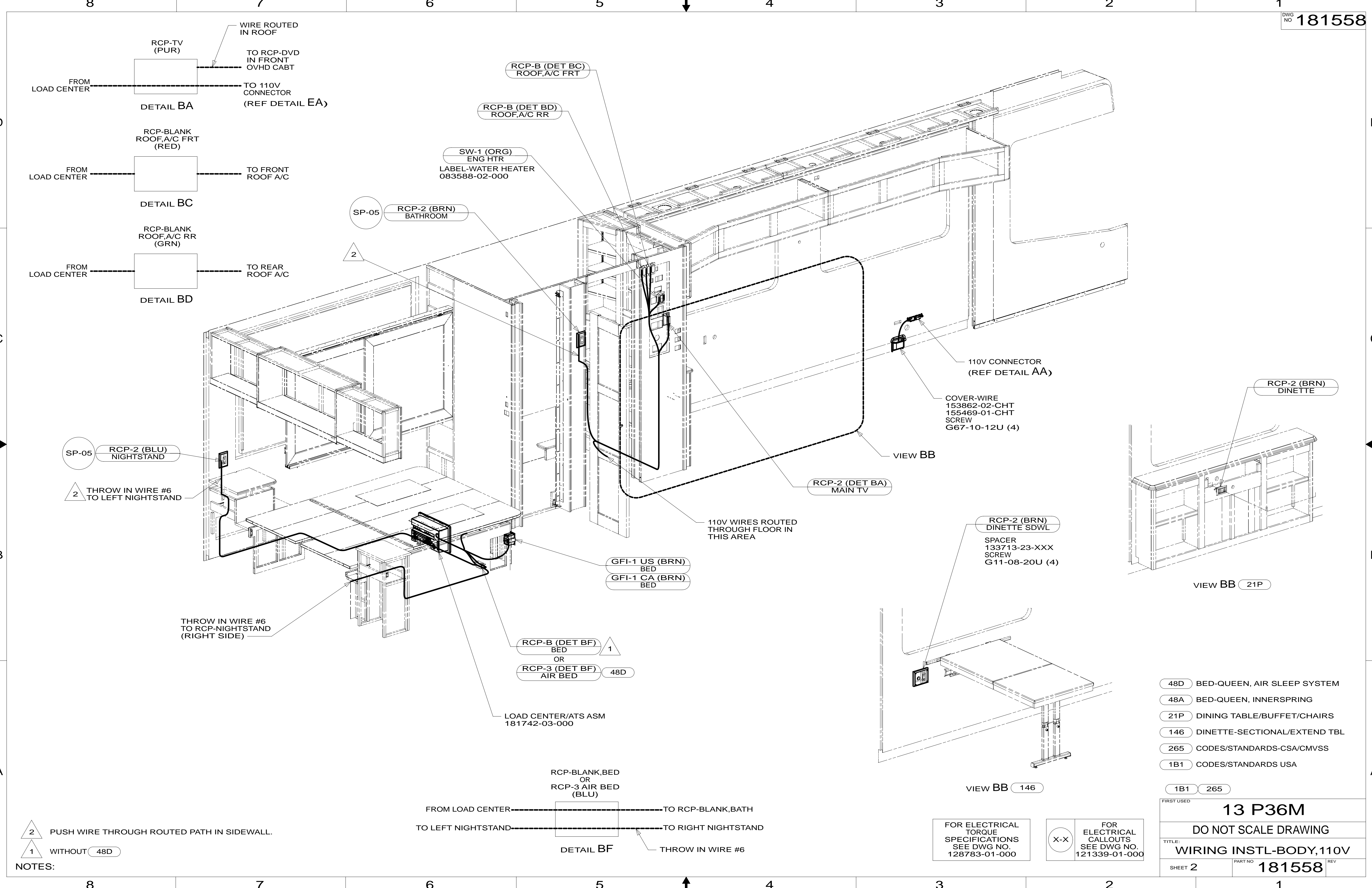
1B1 265

WINNEBAGO COPYRIGHT 2011 WINNEBAGO INDUSTRIES, INC.

DFT-ORIG	ORIG. DATE
CHKR	ALL DIMENSIONS ARE IN MILLIMETERS
P.E.	FIRST USED
M.E.	13 P36M
DSNR	MATERIAL:
UNSPECIFIED TOLERANCES ARE:	
WHOLE DIM (X)	: 3
ONE-PLACE (X.X)	: 1.5
TWO-PLACE (X.XX)	: 0.50
ANGLE	: 1°
THIRD ANGLE PROJECTION	
DO NOT SCALE DRAWING	REFER TO ES0018 FOR FASTENER TIGHTENING GUIDELINES
TITLE: WIRING INSTL-BODY, 110V	
SHEET 1 OF 5	PART NO 181558 REV

FOR ELECTRICAL TORQUE SPECIFICATIONS SEE DWG NO. 128783-01-000

X-X FOR ELECTRICAL CALLOUTS SEE DWG NO. 121339-01-000



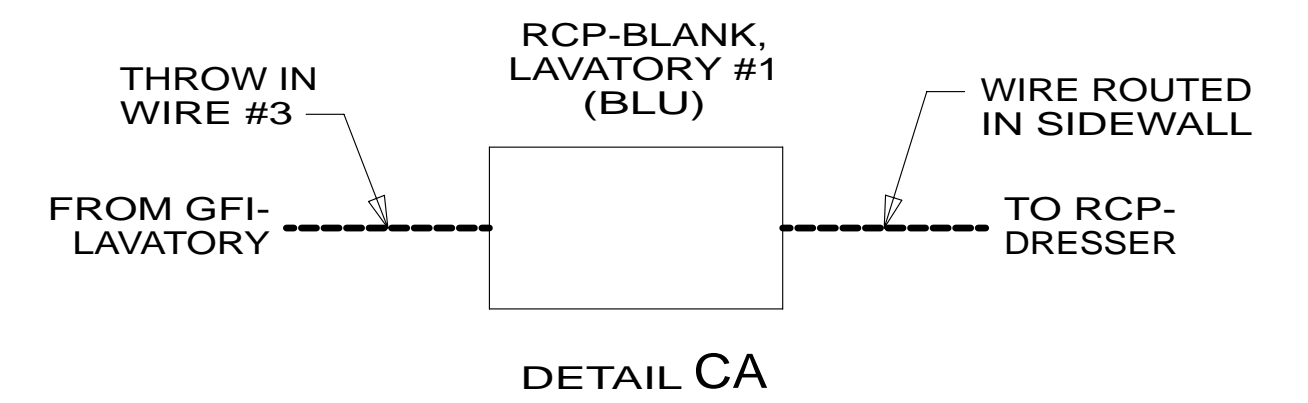
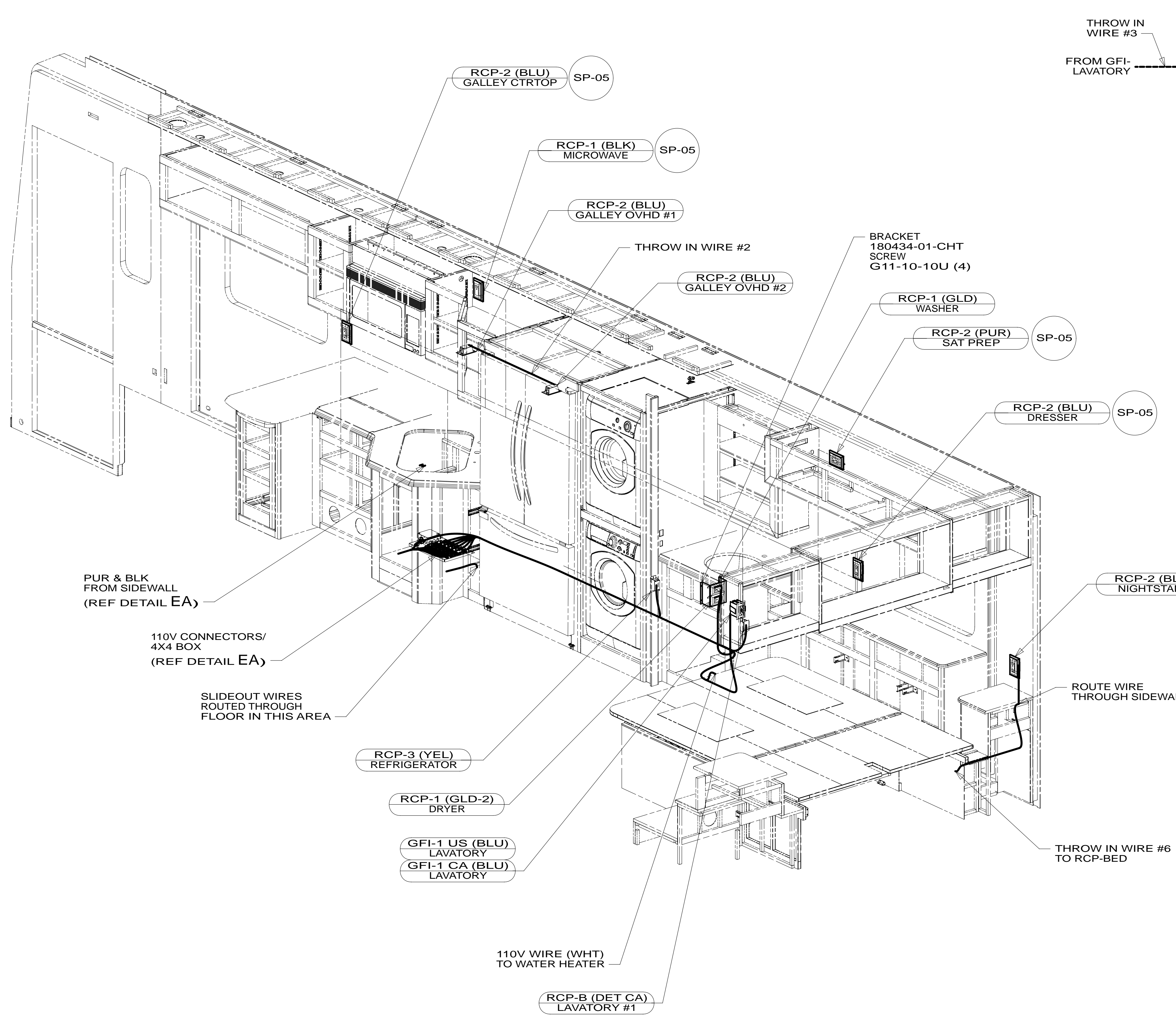
NOTES:
 2 PUSH WIRE THROUGH ROUTED PATH IN SIDEWALL.
 1 WITHOUT 48D

FOR ELECTRICAL TORQUE SPECIFICATIONS SEE DWG NO. 128783-01-000

FOR ELECTRICAL CALLOUTS SEE DWG NO. 121339-01-000

- 48D BED-QUEEN, AIR SLEEP SYSTEM
- 48A BED-QUEEN, INNERSPRING
- 21P DINING TABLE/BUFFET/CHAIRS
- 146 DINETTE-SECTIONAL/EXTEND TBL
- 265 CODES/STANDARDS-CSA/CMVSS
- 1B1 CODES/STANDARDS USA

FIRST USED	
13 P36M	
DO NOT SCALE DRAWING	
TITLE: WIRING INSTL-BODY, 110V	
SHEET 2	PART NO 181558 REV



265 CODES/STANDARDS-CSA/CMVSS

1B1 CODES/STANDARDS USA

1B1 265

FIRST USED 13 P36M

DO NOT SCALE DRAWING

TITLE: WIRING INSTL-BODY, 110V

SHEET 3 PART NO 181558 REV

FOR ELECTRICAL TORQUE SPECIFICATIONS SEE DWG NO. 128783-01-000

X-X FOR ELECTRICAL SPECIFICATIONS SEE DWG NO. 121339-01-000

D
C
B
A

D
C
B
A

8

7

6

5

4

3

2

1

8

7

6

5

4

3

2

1

79W INVERTER
175385-01-000
15L 175386-01-000
NUT
D39-06-00B (4)

3 6 POSITIVE BATTERY
CABLE CONNECTION

REMOTE DISPLAY
PANEL & AC TEMP
SENSOR CONNECTION

1 AC OUTPUT
10 GA WIRE
FROM INVERTER
BREAKER PANEL
DETAIL DB

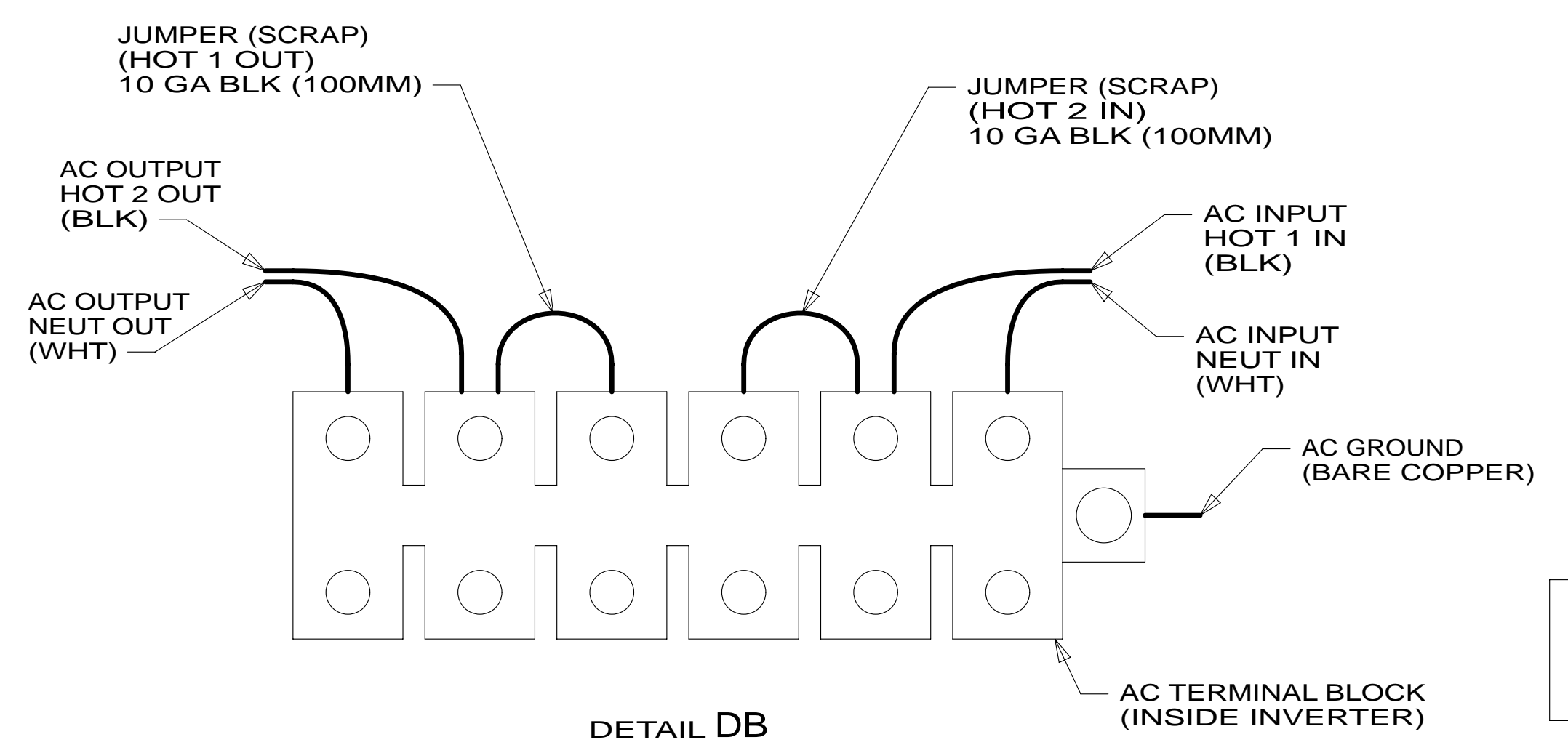
1 WIRE ASM-GROUND

1 AC INPUT
10 GA WIRE
FROM MAIN
BREAKER PANEL
DETAIL DB

3 6 NEGATIVE BATTERY
CABLE CONNECTION

BRACKET
176315-08-CHT
RIVET
113133-01-CHT (4)

VIEW DA



DETAIL DB

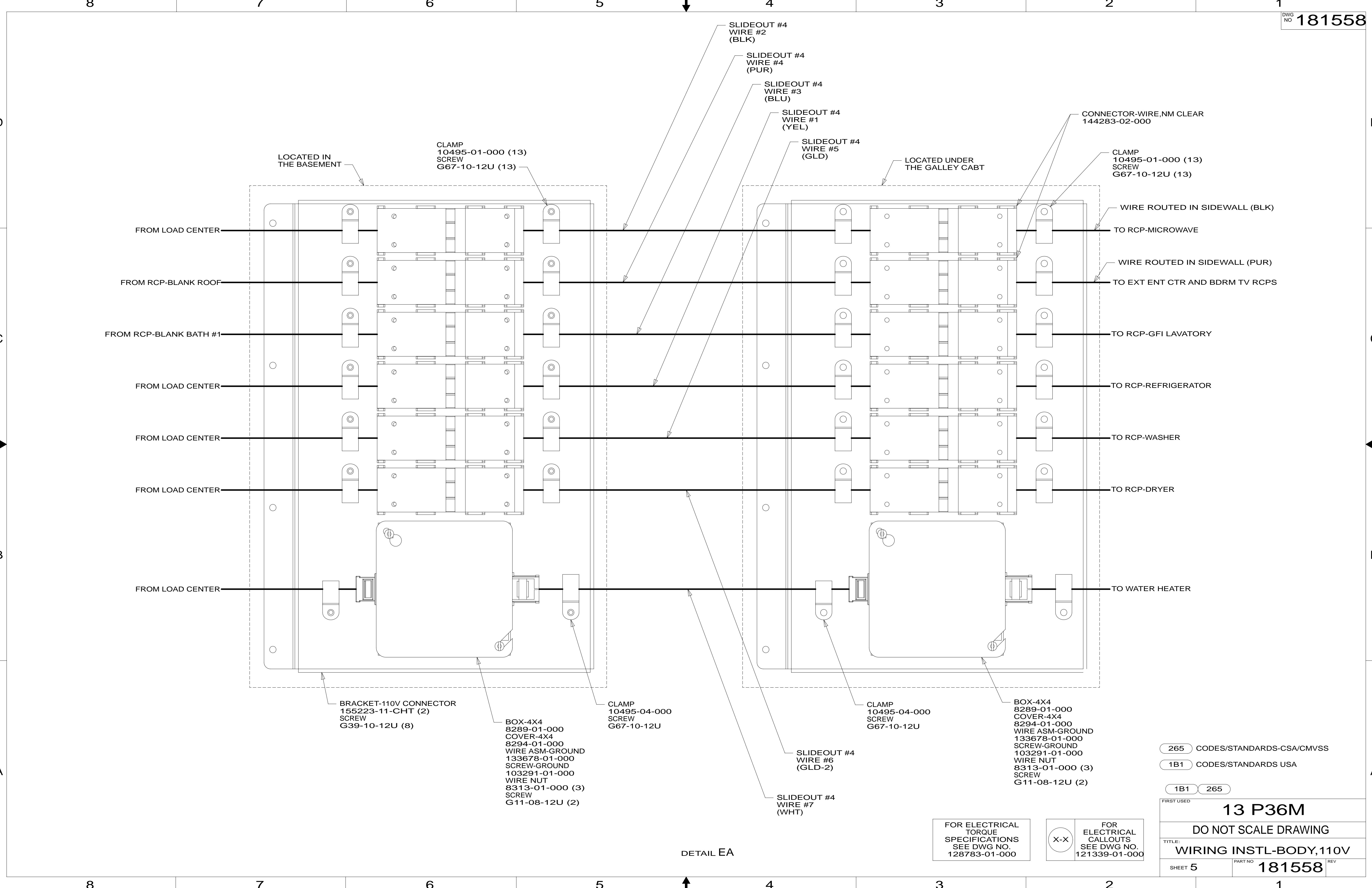
- NOTES:
- 7 BRACKET IS LOCATED BY HOLES ON PANEL.
 - 6 DO NOT USE POWER/AIR TOOL TO INSTALL NUT. TORQUE TO 10-12 FT LBS.
 - 5 CABLES PART OF WIRE ASM-COACH.
 - 4 SEE INVERTER/CHARGER OWNER'S MANUAL FOR ADDITIONAL INFORMATION.
 - 3 SEE WIRING INSTL-CHASSIS FOR ADDITIONAL INFORMATION.
 - 2 USED WITHOUT 13X
 - 1 SEE LOAD CENTER/ATS ASM FOR ADDITIONAL INFORMATION.

- 79W REFRIGERATOR-4 DOOR
- 15L RESIDENTIAL REFRIGERATOR PKG
- 265 CODES/STANDARDS-CSA/CMVSS
- 1B1 CODES/STANDARDS USA

FIRST USED	
13 P36M	
DO NOT SCALE DRAWING	
TITLE: WIRING INSTL-BODY, 110V	
SHEET 4	PART NO 181558 REV

FOR ELECTRICAL
TORQUE
SPECIFICATIONS
SEE DWG NO.
128783-01-000

FOR ELECTRICAL
CALLOUTS
SEE DWG NO.
121339-01-000



LOCATED IN THE BASEMENT
CLAMP 10495-01-000 (13)
SCREW G67-10-12U (13)
LOCATED UNDER THE GALLEY CABT
CLAMP 10495-01-000 (13)
SCREW G67-10-12U (13)

FROM LOAD CENTER
FROM RCP-BLANK ROOF
FROM RCP-BLANK BATH #1
FROM LOAD CENTER
FROM LOAD CENTER
FROM LOAD CENTER
FROM LOAD CENTER
TO RCP-MICROWAVE
TO EXT ENT CTR AND BDRM TV RCPS
TO RCP-GFI LAVATORY
TO RCP-REFRIGERATOR
TO RCP-WASHER
TO RCP-DRYER
TO WATER HEATER

BRACKET-110V CONNECTOR 155223-11-CHT (2)
SCREW G39-10-12U (8)
BOX-4X4 8289-01-000
COVER-4X4 8294-01-000
WIRE ASM-GROUND 133678-01-000
SCREW-GROUND 103291-01-000
WIRE NUT 8313-01-000 (3)
SCREW G11-08-12U (2)
CLAMP 10495-04-000
SCREW G67-10-12U
CLAMP 10495-04-000
SCREW G67-10-12U
BOX-4X4 8289-01-000
COVER-4X4 8294-01-000
WIRE ASM-GROUND 133678-01-000
SCREW-GROUND 103291-01-000
WIRE NUT 8313-01-000 (3)
SCREW G11-08-12U (2)
SLIDEOUT #4 WIRE #6 (GLD-2)
SLIDEOUT #4 WIRE #7 (WHT)

265 CODES/STANDARDS-CSA/CMVSS
1B1 CODES/STANDARDS USA
1B1 265

FIRST USED	
13 P36M	
DO NOT SCALE DRAWING	
TITLE: WIRING INSTL-BODY, 110V	
SHEET 5	PART NO 181558 REV

FOR ELECTRICAL TORQUE SPECIFICATIONS SEE DWG NO. 128783-01-000

FOR ELECTRICAL CALLOUTS SEE DWG NO. 121339-01-000

DETAIL EA