



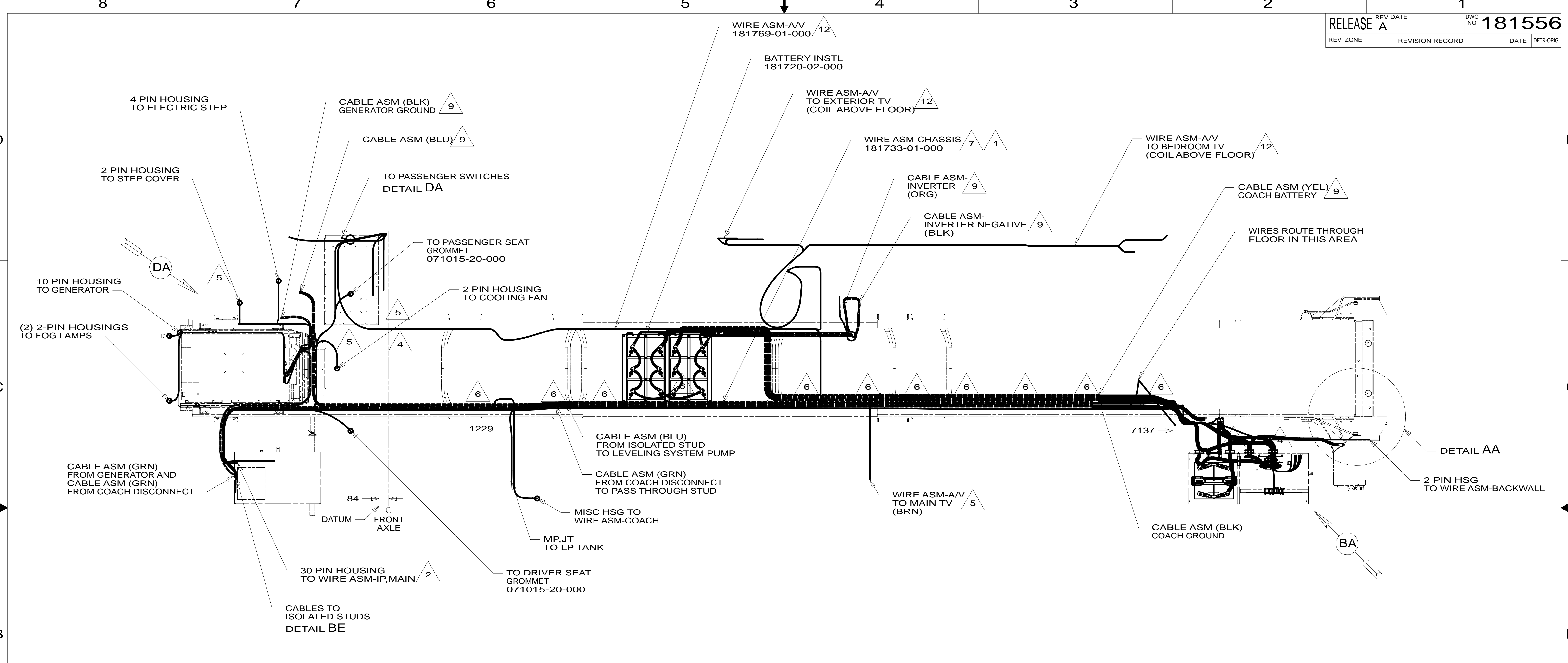
DANGER

Danger of electrical shock, burns or death. Always remove all power sources before attempting any repair, service or diagnostic work. Power can be present from shore power, generator, inverter or battery. All power sources must be disabled and secured before performing any service.

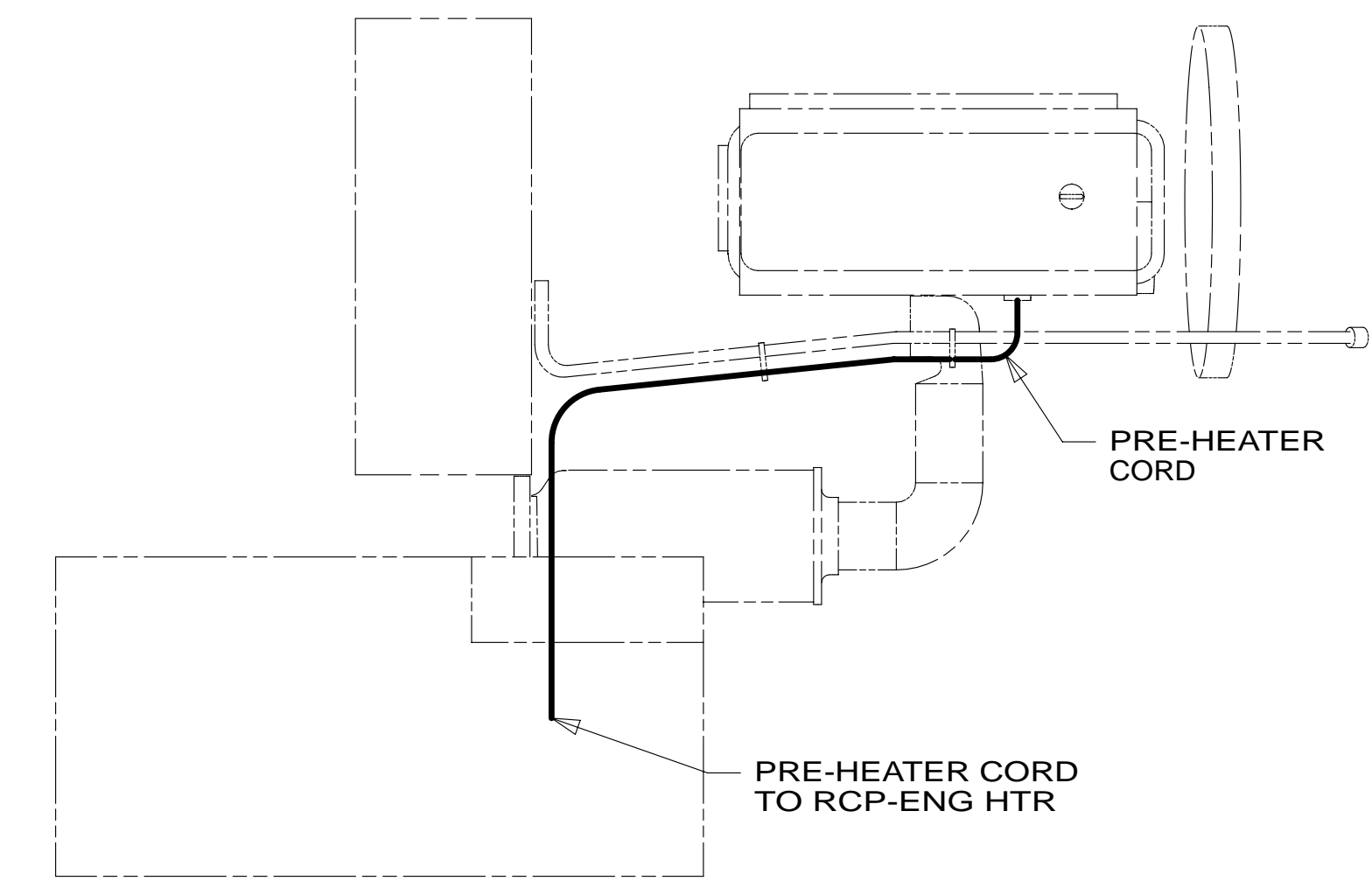


CAUTION

If you lack the skills, tools or equipment to perform diagnostic or repair work leave such work to an authorized Winnebago Industries dealer or other qualified shop.



- NOTES:
- 12 SEE SHEET 5 FOR ADDITIONAL INFORMATION.
 - 11 CONNECTION TO BE MADE ABOVE FLOOR.
 - 10 SECURE CORD AWAY FROM ALL MOVING PARTS AND EXHAUST WITH WIRE-TIE 93147-01-000 AS REQUIRED
 - 9 SEE BATTERY INST FOR ADDITIONAL INFORMATION
 - 8 SEE WIRE ASM-CHASSIS FOR ADDITIONAL INFORMATION
 - 7 REST WIRE IN FRAME RAIL WHEN APPLICABLE.
 - 6 CLAMP 83610-01-000, SCREW G39-08-12B
 - 5 CLAMP 10497-03-000, SCREW G39-08-12B
 - 4 USE TIE-WIRE 8343-04-000 TO SECURE WIRES TO FLOOR SUPPORT FRAME AT LEAST ONCE EVERY 600MM.
 - 3 ROUTE AND CLAMP WIRE ALONG UPPER TUBE IN BATTERY COMPT.
 - 2 SEE WIRING INSTL-FRONT END FOR ADDITIONAL INFORMATION.
 - 1 SAME LOOM USED ON BOTH R40FD & R40KD.



265 CODES/STANDARDS-CSA/CMVSS
1B1 CODES/STANDARDS USA
1B1 265

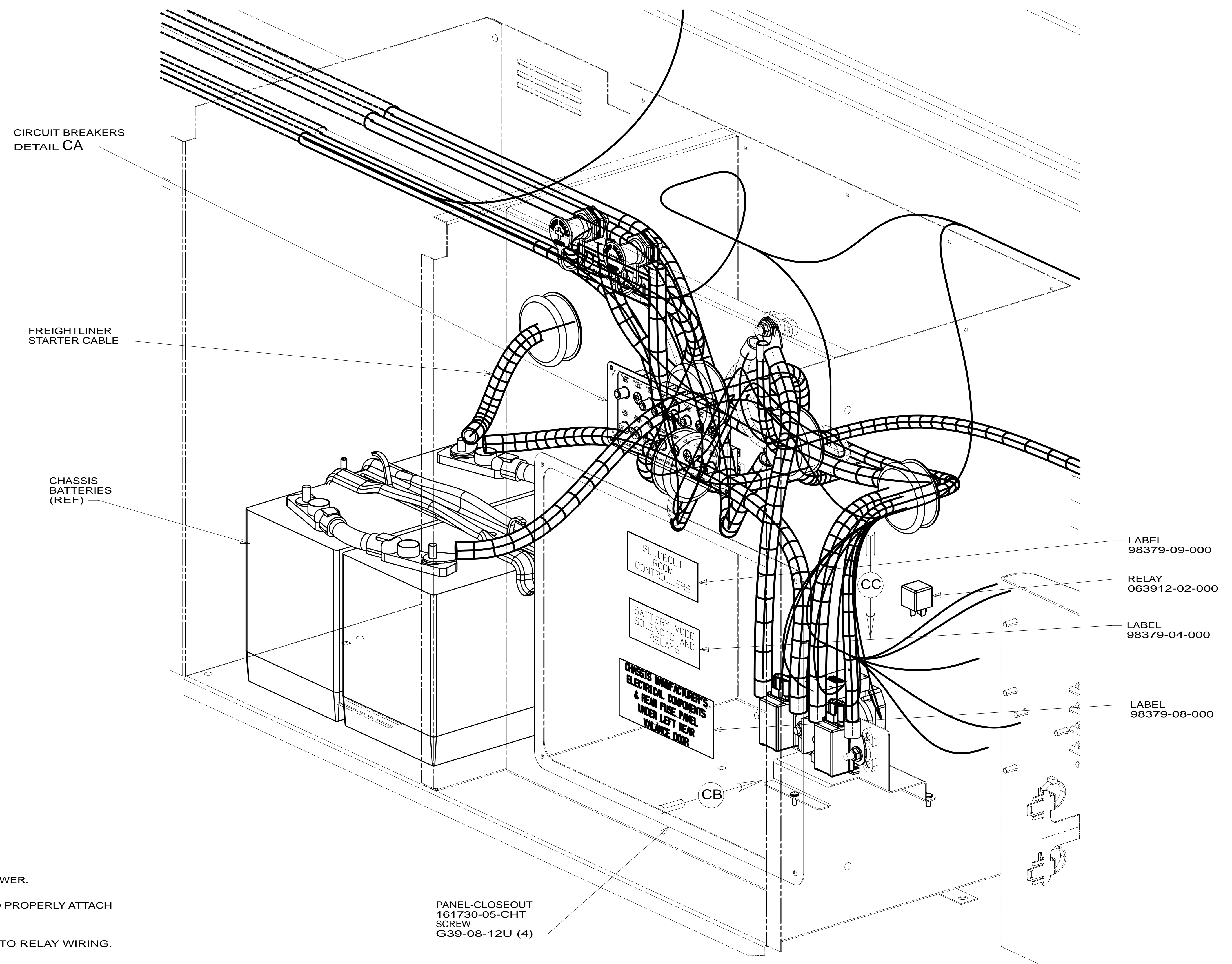
WINNEBAGO COPYRIGHT 2011 WINNEBAGO INDUSTRIES, INC.

DFT-ORIG	ORIG. DATE
CHKR	ALL DIMENSIONS ARE IN MILLIMETERS
P.E.	FIRST USED
M.E.	13 P36M
DSNR	MATERIAL:
UNSPECIFIED TOLERANCES ARE:	
WHOLE DIM (X)	: 3
ONE-PLACE (X.X)	: 1.5
TWO-PLACE (X.XX)	: 0.50
ANGLE	: 1°
THIRD ANGLE PROJECTION	
DO NOT SCALE DRAWING	REFER TO ES0018 FOR FASTENER TIGHTENING GUIDELINES
TITLE: WIRING INSTL-CHASSIS	
SHEET 1 OF 5	PART NO 181556 REV
REF: 1	19-Nov-2012

FOR ELECTRICAL TORQUE SPECIFICATIONS SEE DWG NO. 128783-01-000

X-X FOR ELECTRICAL CALLOUTS SEE DWG NO. 121339-01-000

* 181556 *



CIRCUIT BREAKERS
DETAIL CA

FREIGHTLINER
STARTER CABLE

CHASSIS
BATTERIES
(REF)

SLIDEOUT
ROOM
CONTROLLERS

BATTERY MODE
SOLENOID AND
RELAYS

CHASSIS MANUFACTURER'S
ELECTRICAL COMPONENTS
& REAR FUSE PANEL
UNDER LEFT REAR
VALVE DOOR

LABEL
98379-09-000

RELAY
063912-02-000

LABEL
98379-04-000

LABEL
98379-08-000

PANEL-CLOSEOUT
161730-05-CHT
SCREW
G39-08-12U (4)

- NOTES:
- 7 FROM WIRE ASM-SLIDEOUT POWER.
 - 6 REPLACE EXISTING SCREW TO PROPERLY ATTACH BREAKER TO BUSS BAR.
 - 5 WIRE TIE THE FUSE WIRING TO RELAY WIRING.
 - 4 SEE WIRE ASM-CHASSIS FOR ADDITIONAL INFORMATION
 - 3 SEE BATTERY INSTL FOR ADDITIONAL INFORMATION.
 - 2 SEE WIRING INSTL-FRONT END FOR ADDITIONAL INFORMATION.
 - 1 CIRCUITS BRANCH FROM WIRE ASM-CHASSIS.

FOR ELECTRICAL
TORQUE
SPECIFICATIONS
SEE DWG NO.
128783-01-000

FOR
ELECTRICAL
CALLOUTS
SEE DWG NO.
121339-01-000

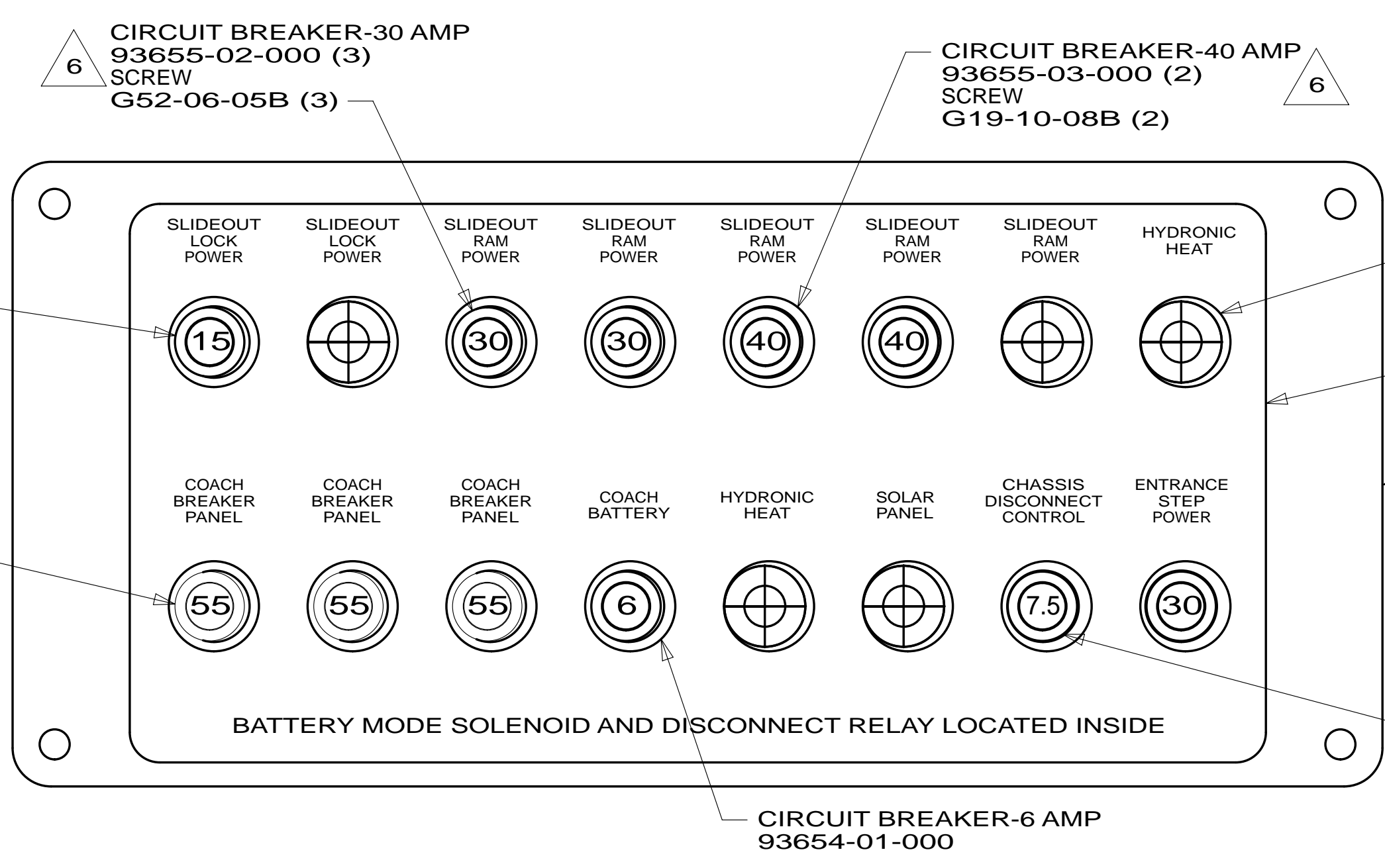
265 CODES/STANDARDS-CSA/CMVSS
1B1 CODES/STANDARDS USA

1B1 265

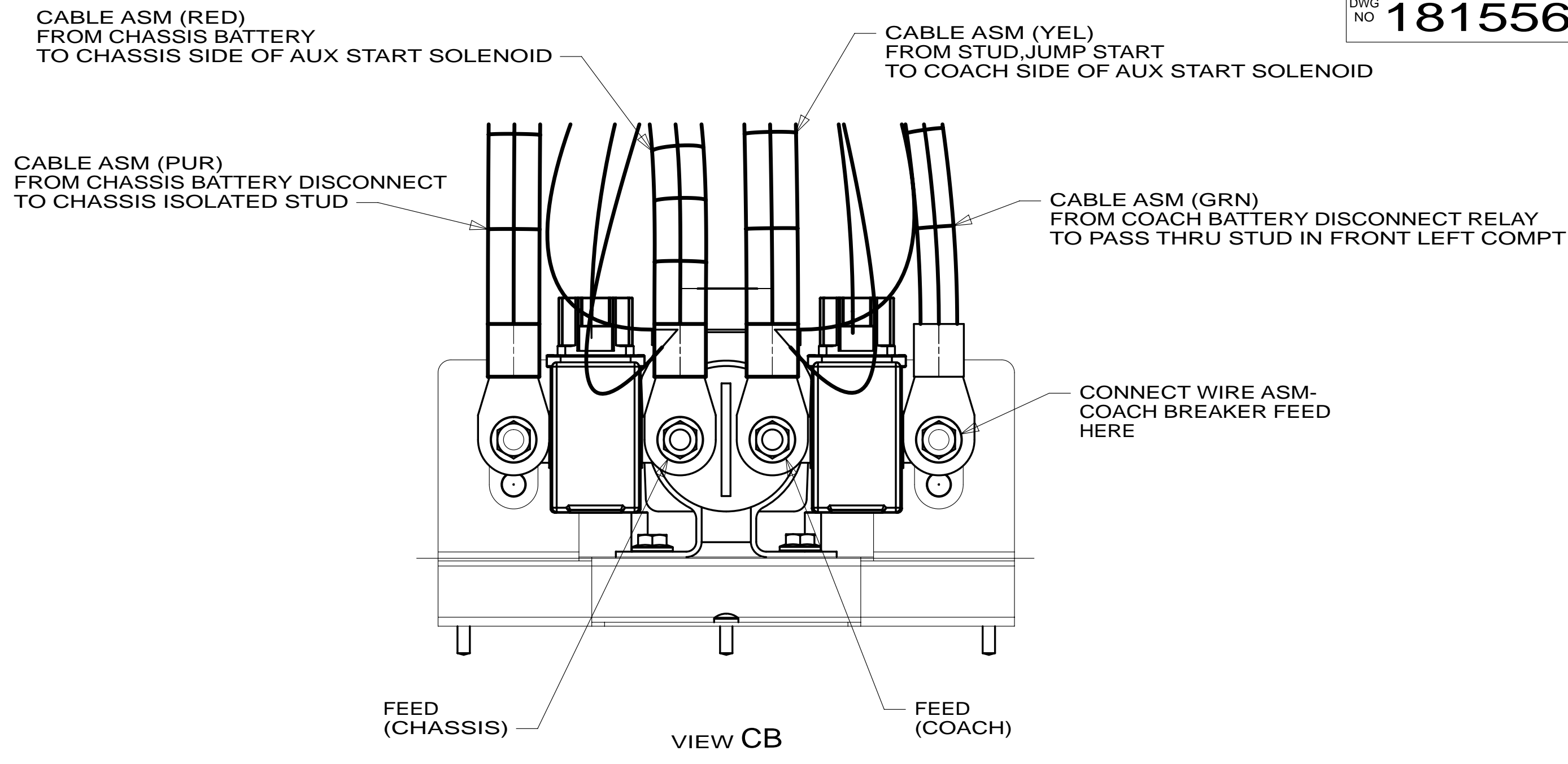
FIRST USED	
13 P36M	
DO NOT SCALE DRAWING	
TITLE: WIRING INSTL-CHASSIS	
SHEET 2	PART NO 181556 REV

* 181556 * A

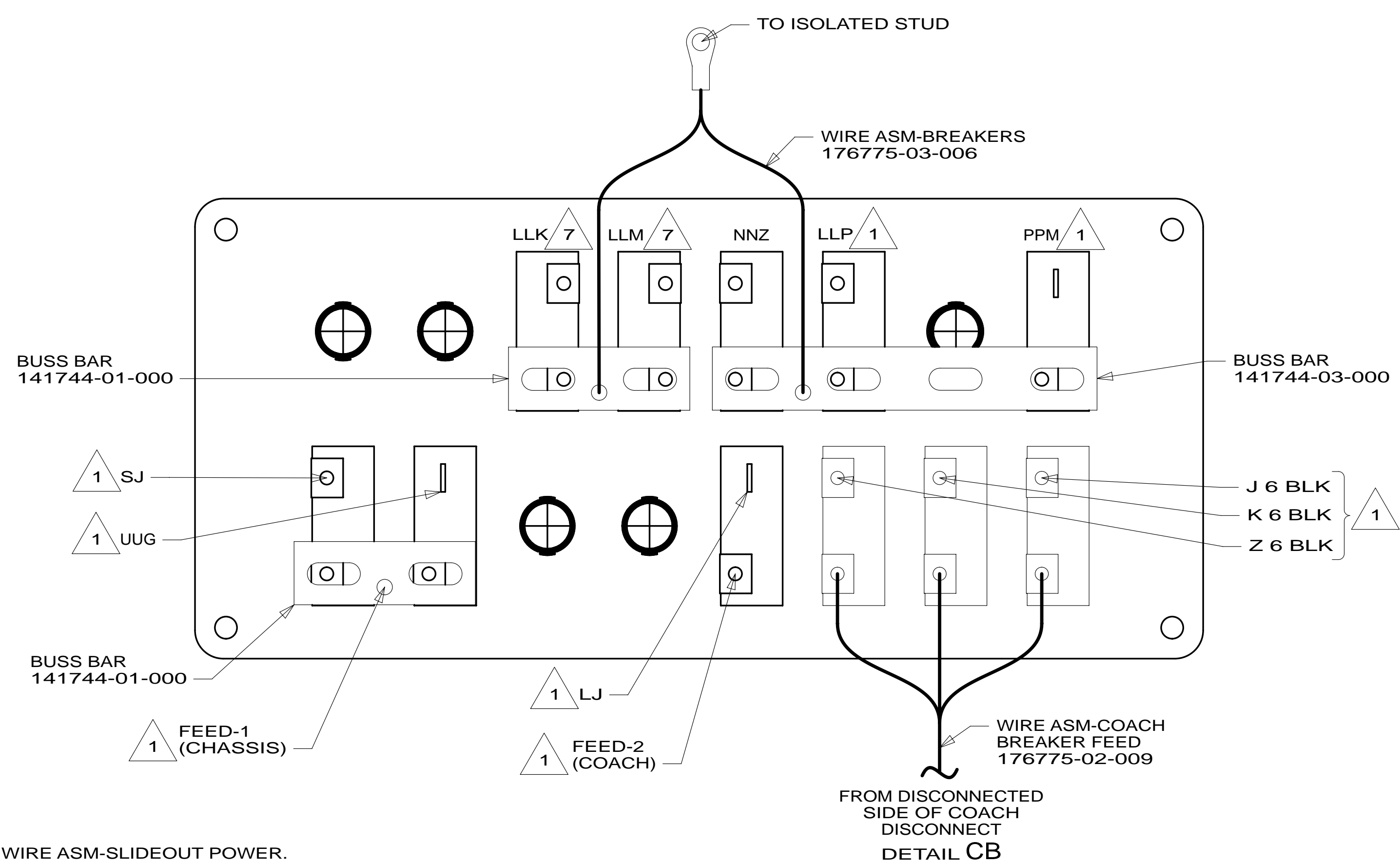
VIEW BA



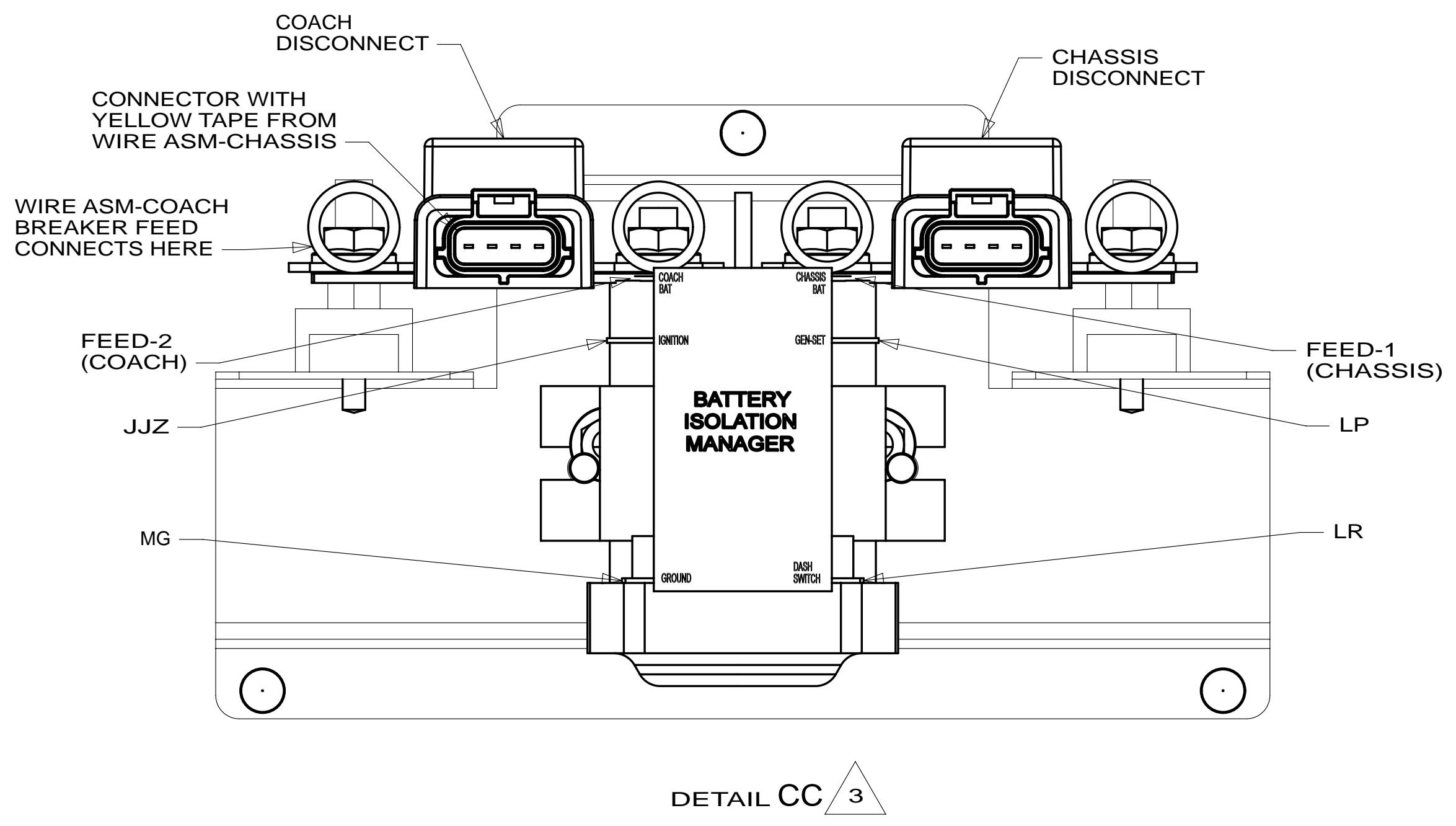
DETAIL CA



VIEW CB



DETAIL CA (BACK VIEW-COMPONENTS)



DETAIL CC

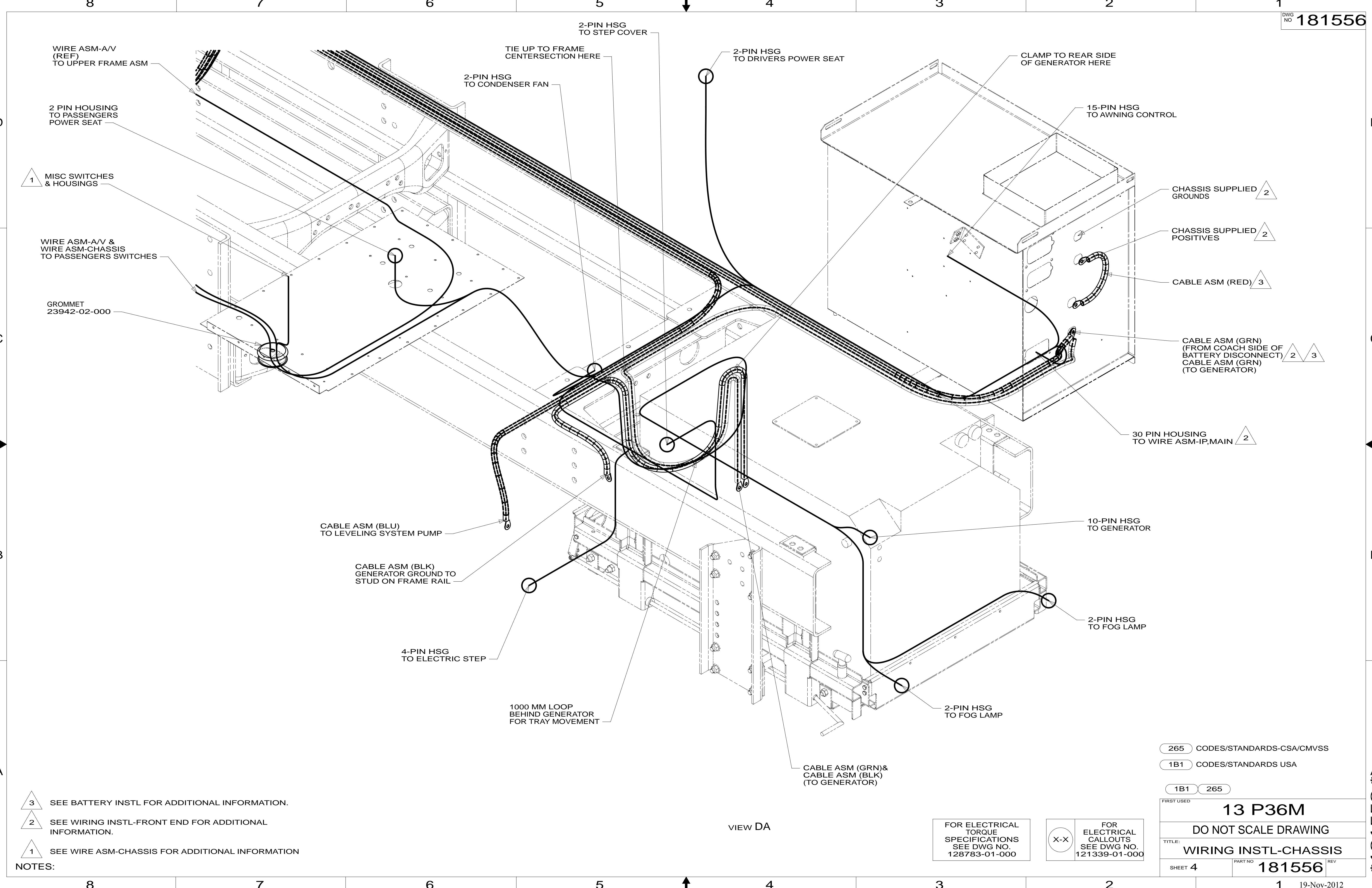
- NOTES:
- 7 FROM WIRE ASM-SLIDEOUT POWER.
 - 6 REPLACE EXISTING SCREW TO PROPERLY ATTACH BREAKER TO BUSS BAR.
 - 5 WIRE TIE THE FUSE WIRING TO RELAY WIRING.
 - 4 SEE WIRE ASM-CHASSIS FOR ADDITIONAL INFORMATION
 - 3 SEE BATTERY INSTL FOR ADDITIONAL INFORMATION.
 - 2 SEE WIRING INSTL-FRONT END FOR ADDITIONAL INFORMATION.
 - 1 CIRCUITS BRANCH FROM WIRE ASM-CHASSIS.

FOR ELECTRICAL TORQUE SPECIFICATIONS SEE DWG NO. 128783-01-000

FOR ELECTRICAL CALLOUTS SEE DWG NO. 121339-01-000

- 265 CODES/STANDARDS-CSA/CMVSS
- 1B1 CODES/STANDARDS USA
- 1B1 265

FIRST USED	13 P36M	
DO NOT SCALE DRAWING		
TITLE: WIRING INSTL-CHASSIS		
SHEET 3	PART NO 181556	REV



- NOTES:
- 3 SEE BATTERY INSTL FOR ADDITIONAL INFORMATION.
 - 2 SEE WIRING INSTL-FRONT END FOR ADDITIONAL INFORMATION.
 - 1 SEE WIRE ASM-CHASSIS FOR ADDITIONAL INFORMATION

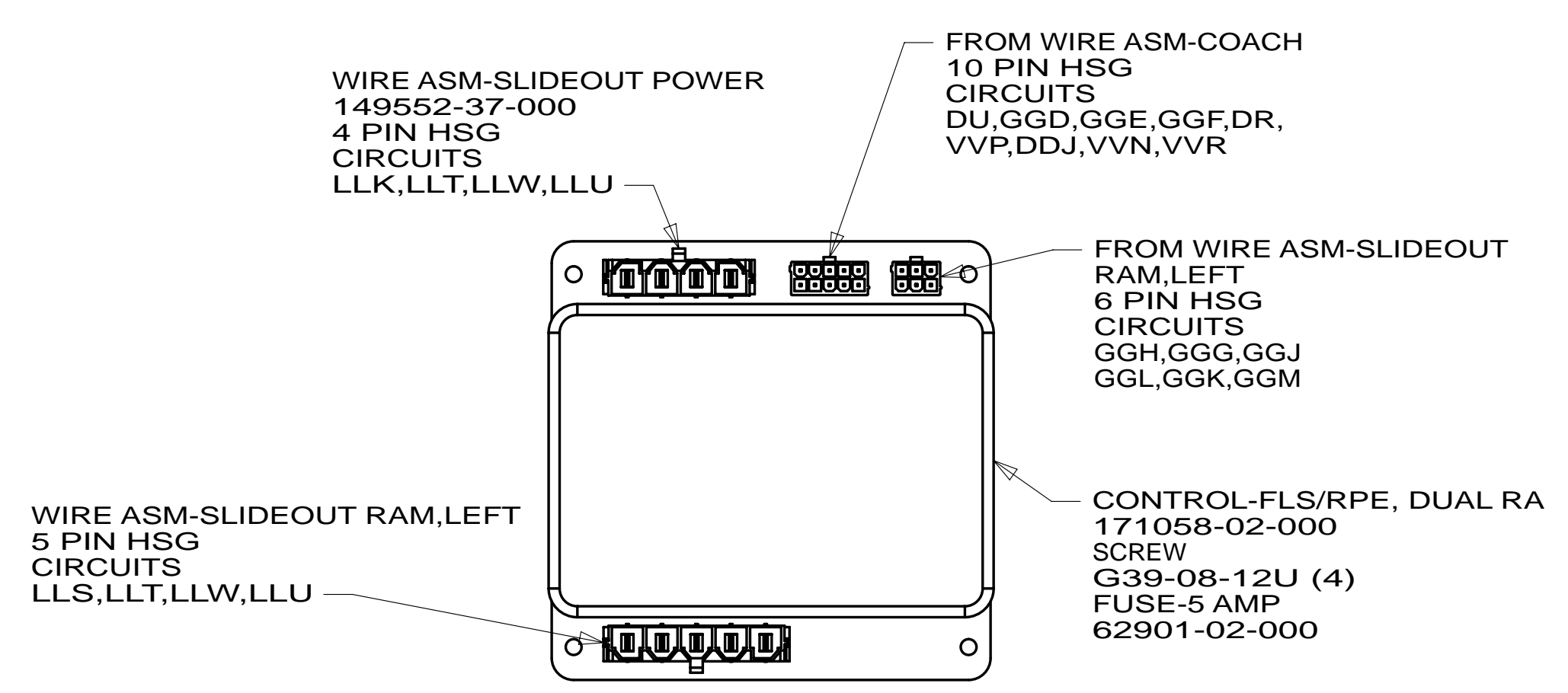
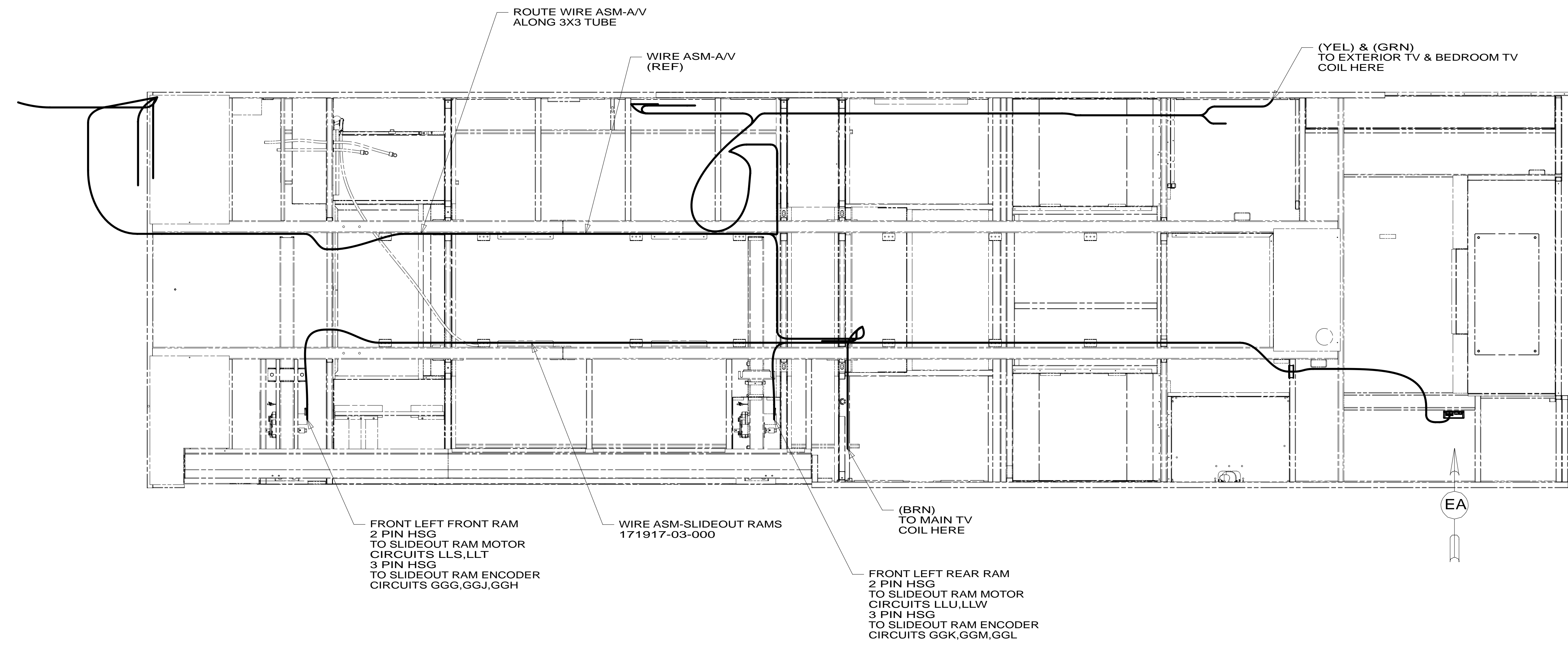
FOR ELECTRICAL TORQUE SPECIFICATIONS SEE DWG NO. 128783-01-000

FOR ELECTRICAL CALLOUTS SEE DWG NO. 121339-01-000

- 265 CODES/STANDARDS-CSA/CMVSS
- 1B1 CODES/STANDARDS USA
- 1B1 265

FIRST USED	13 P36M	
DO NOT SCALE DRAWING		
TITLE: WIRING INSTL-CHASSIS		
SHEET 4	PART NO. 181556	REV

* 181556 *



- NOTES:
- 3 SECURE SLIDEOUT RAM WIRES TO SLIDEOUT MOTOR WITH WIRE TIE 8343-04-000.
 - 2 SEE WIRING DIAGRAM-BODY,12V FOR ADDITIONAL INFORMATION.
 - 1. ALL WIRES TO BE CLAMPED WITH 10495-01-000 OR WIRE TIE 8343-02-000 EVERY 600MM, UNLESS OTHERWISE SPECIFIED.

265	CODES/STANDARDS-CSA/CMVSS
1B1	CODES/STANDARDS USA
1B1	265

FIRST USED	13 P36M
TITLE:	DO NOT SCALE DRAWING
SHEET 5	WIRING INSTL-CHASSIS
PART NO	181556
REV	

FOR ELECTRICAL TORQUE SPECIFICATIONS SEE DWG NO. 128783-01-000

FOR ELECTRICAL CALLOUTS SEE DWG NO. 121339-01-000

* 181556 * A