



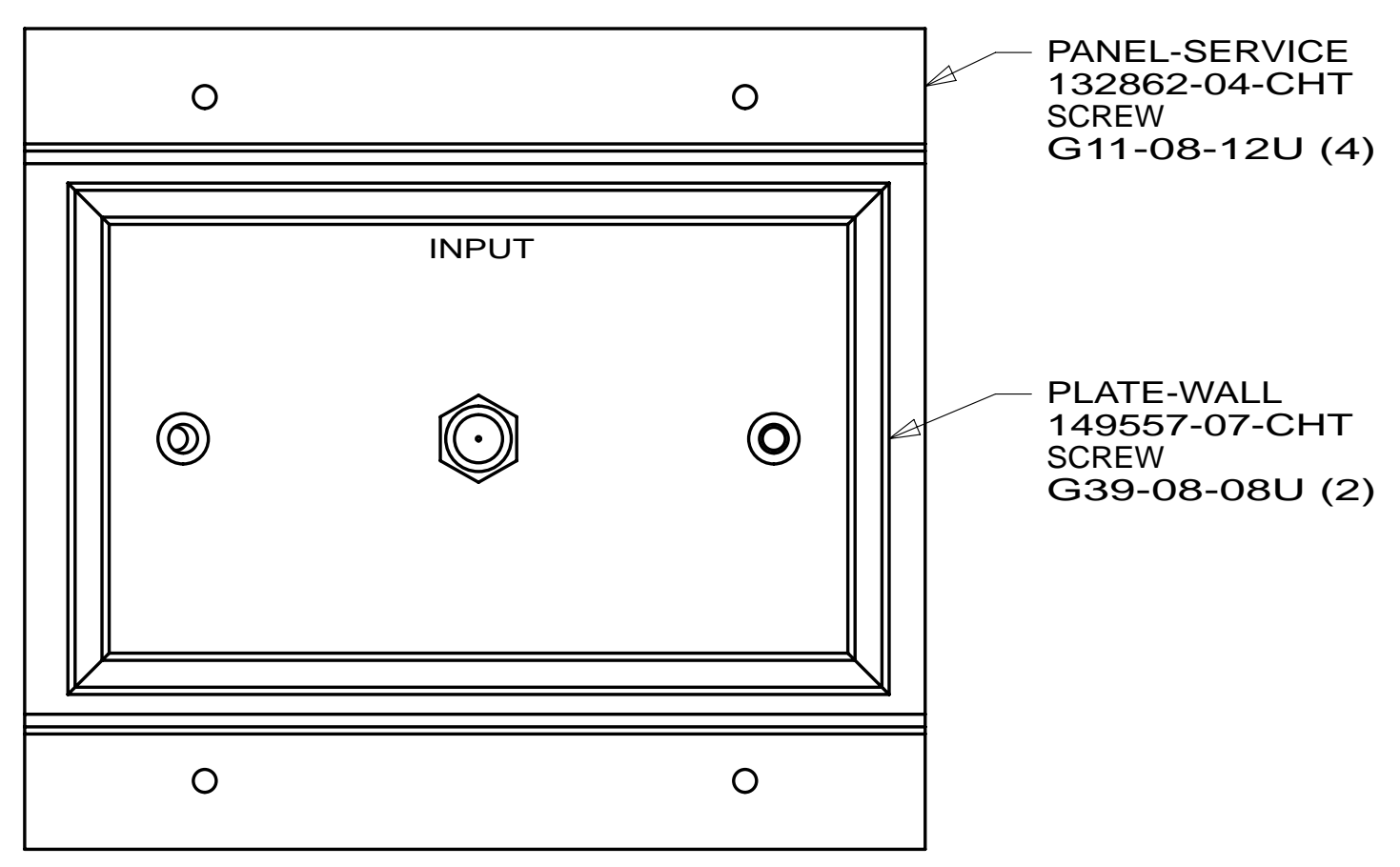
**DANGER**

**Danger of electrical shock, burns or death.** Always remove all power sources before attempting any repair, service or diagnostic work. Power can be present from shore power, generator, inverter or battery. All power sources must be disabled and secured before performing any service.

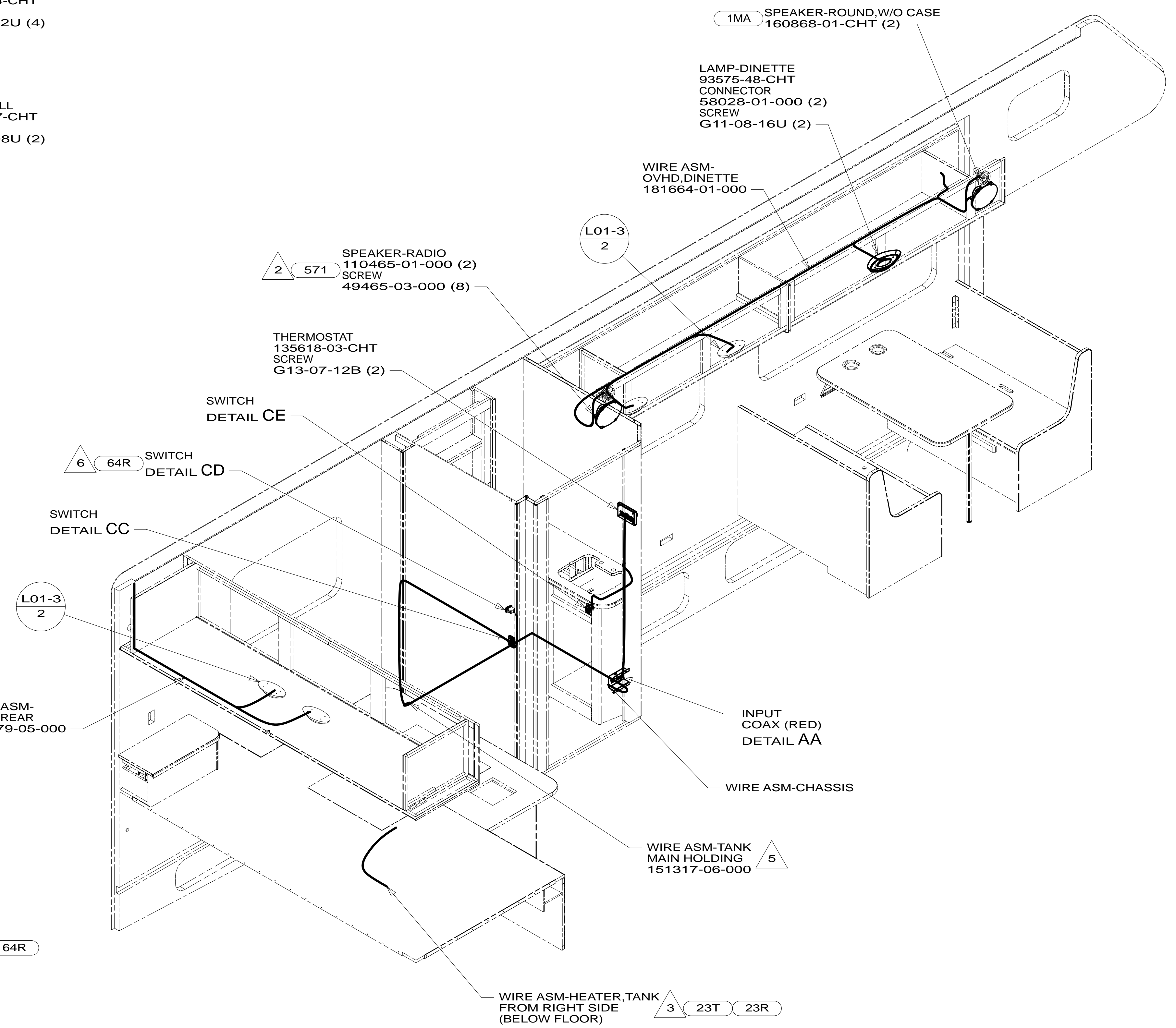


**CAUTION**

If you lack the skills, tools or equipment to perform diagnostic or repair work leave such work to an authorized Winnebago Industries dealer or other qualified shop.



DETAIL AA



- 6 INSTALL SWITCH ON WIRE ASM, ROUTE AND SECURE PUMP SWITCH BRANCH TO WIRE ASM-CHASSIS. WITHOUT 64R
- 5 WIRE ROUTED ALONG DRAINAGE PIPE.
- 4 SEE DRAINAGE SYSTEM INSTALLATION FOR ADDITIONAL INFORMATION.
- 3 WIRE ROUTED ALONG DRAINAGE PIPE AND CONNECTED TO PIPE WITH TIE-WIRE 8343-04-000.
- 2 USE ONE OF THE 4 SPEAKER ASM'S PROVIDED IN KIT. SEND SCREW IN THE KIT TO THE SURPLUS STORE TO BE SOLD. SEND THE WIRE ASM W/HSG TO WIRE PREP TO BE INCORPORATED INTO THE NECESSARY WIRE LOOM.

1. ROUTE TANK SENSOR WIRES SO THEY DO NOT PASS OVER SENSORS. USE WIRE TIE MOUNT 155366-01-000 AND WIRE TIE 8343-01-000 AS NEEDED. TANK SURFACE MUST BE CLEANED USING ISOPROPYL ALCOHOL AND PRIME WITH PRIMER 94.

NOTES:

- 1MA ENTERTAINMENT SYSTEM
- 64R EXTERIOR WASH STATION
- 571 RADIO SPEAKERS
- 23R DRAINAGE SYSTEM/HEAT-PREWIRE
- 23T DRAINAGE SYSTEM-HEATED
- 265 CODES/STANDARDS-CSA/CMVSS
- 1B1 CODES/STANDARDS USA

1B1 265



DFT-ORIG	ORIG. DATE
CHKR	ALL DIMENSIONS ARE IN MILLIMETERS
P.E.	
M.E.	FIRST USED
DSNR	13 231W
UNSPECIFIED TOLERANCES ARE:	
WHOLE DIM (X)	: 3
ONE-PLACE (X.X)	: 1.5
TWO-PLACE (X.XX)	: 0.50
ANGLE	: 1°
THIRD ANGLE PROJECTION	

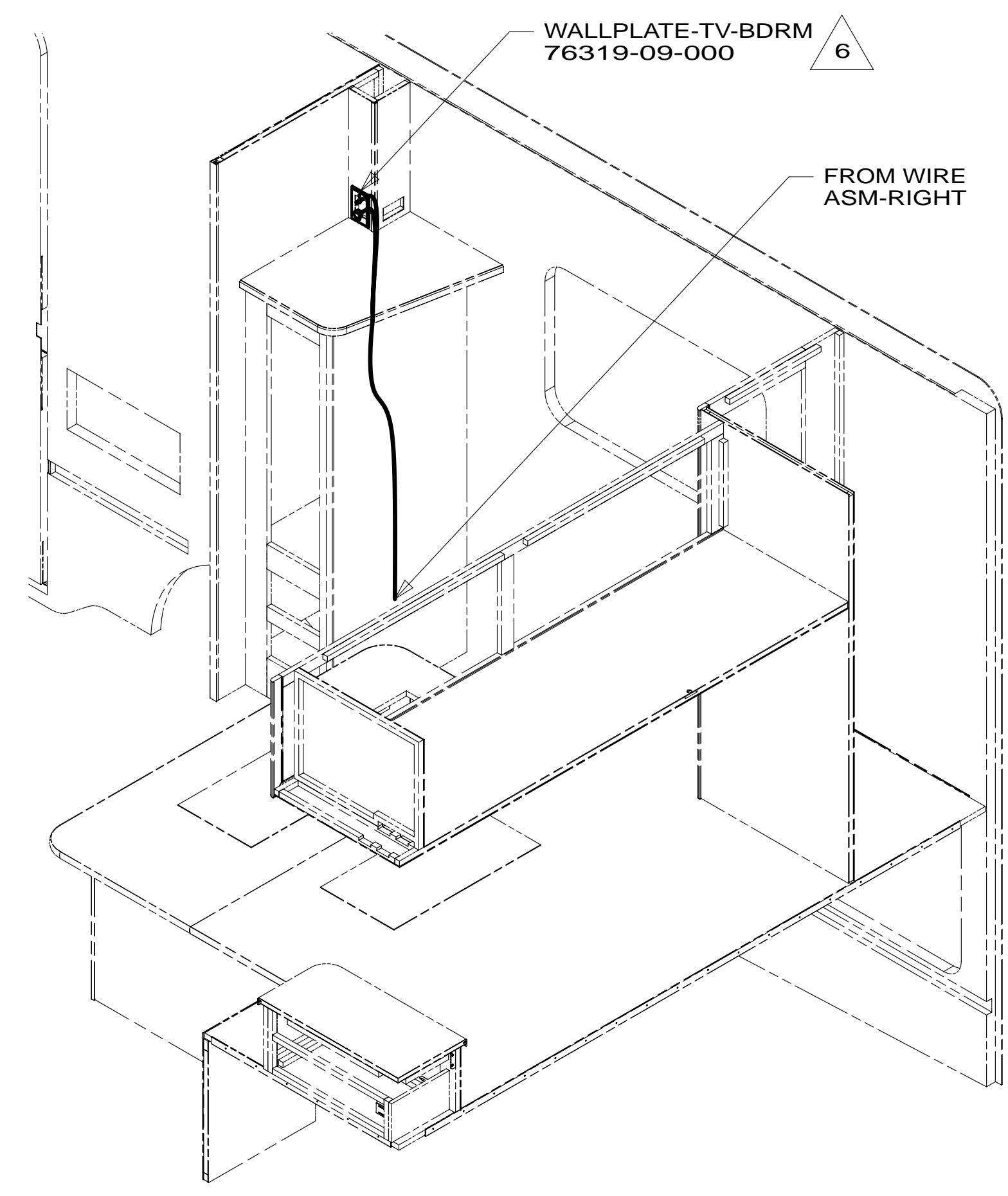
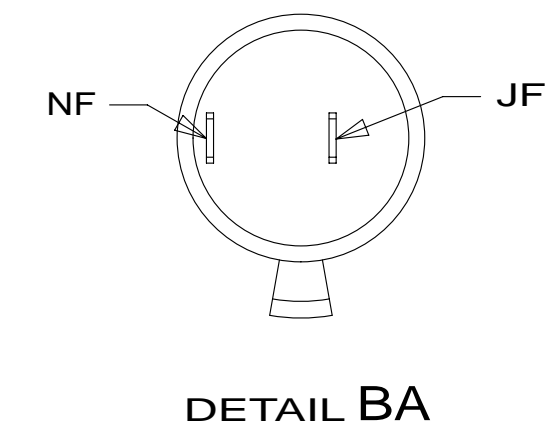
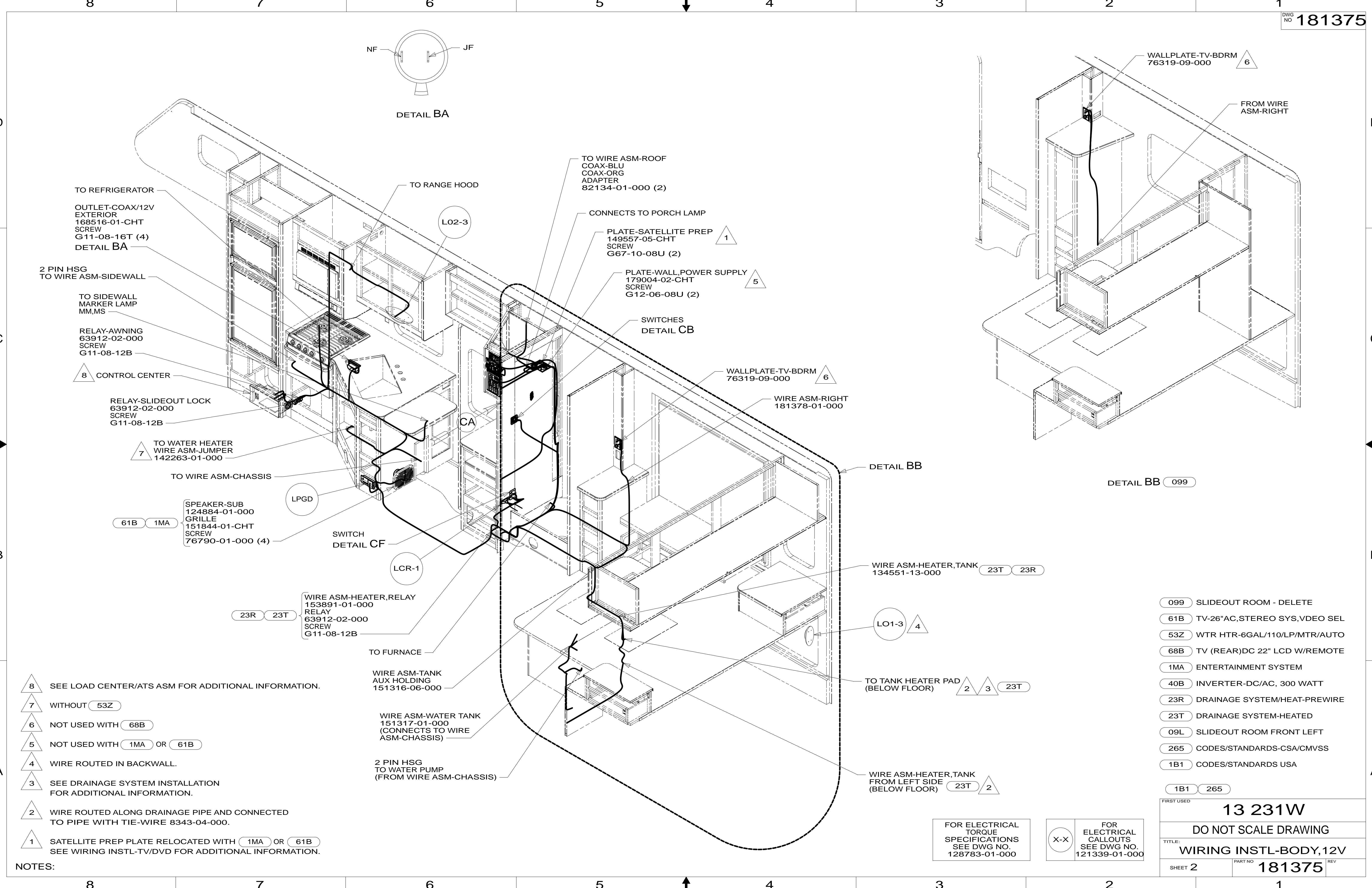
FOR ELECTRICAL TORQUE SPECIFICATIONS SEE DWG NO. 128783-01-000

FOR ELECTRICAL CALLOUTS SEE DWG NO. 121339-01-000

DO NOT SCALE DRAWING REFER TO ES0018 FOR FASTENER TIGHTENING GUIDELINES

TITLE: WIRING INSTL-BODY, 12V  
SHEET 1 OF 4 PART NO 181375 REV

REF: 1



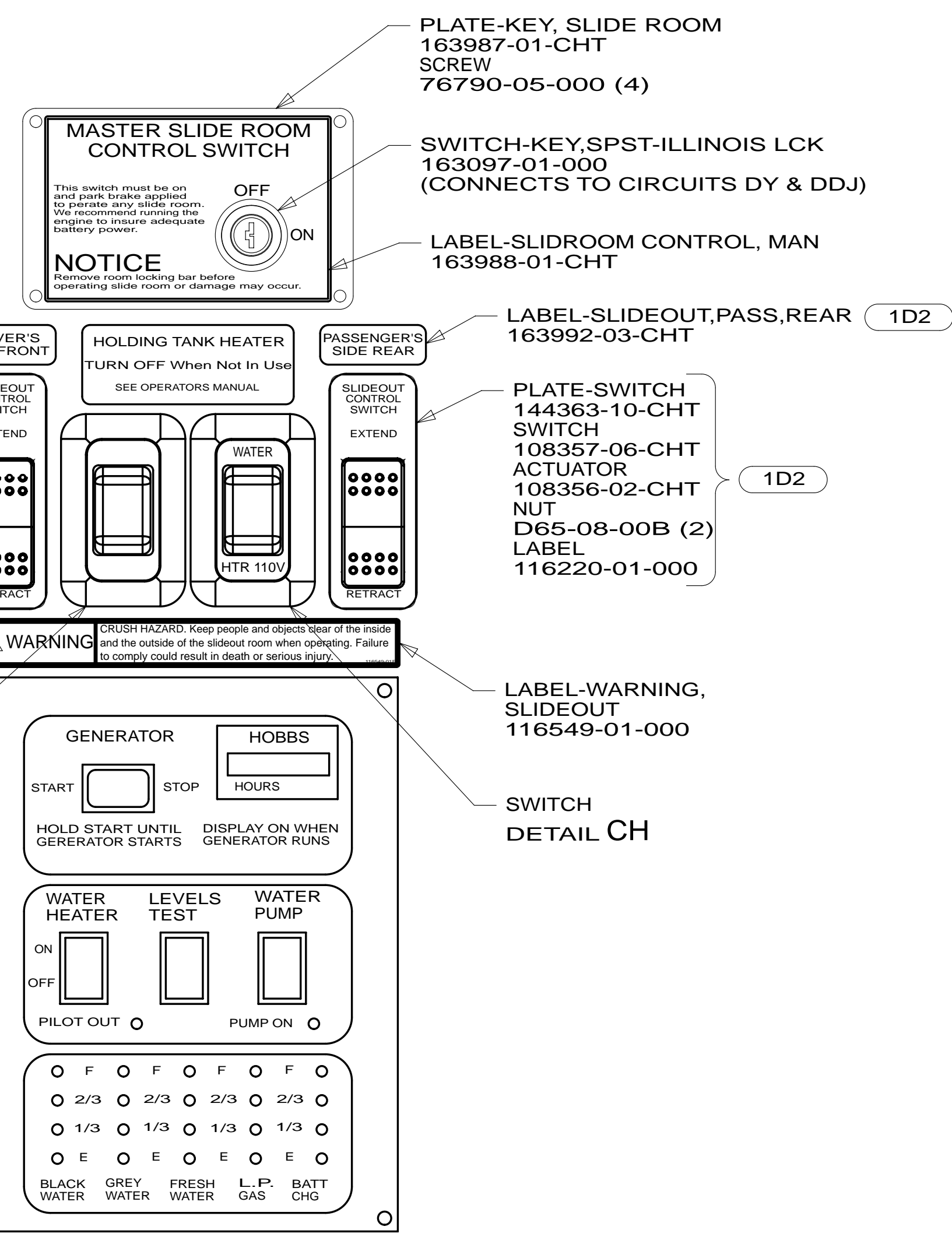
- NOTES:
- 8 SEE LOAD CENTER/ATS ASM FOR ADDITIONAL INFORMATION.
  - 7 WITHOUT (53Z)
  - 6 NOT USED WITH (68B)
  - 5 NOT USED WITH (1MA) OR (61B)
  - 4 WIRE ROUTED IN BACKWALL.
  - 3 SEE DRAINAGE SYSTEM INSTALLATION FOR ADDITIONAL INFORMATION.
  - 2 WIRE ROUTED ALONG DRAINAGE PIPE AND CONNECTED TO PIPE WITH TIE-WIRE 8343-04-000.
  - 1 SATELLITE PREP PLATE RELOCATED WITH (1MA) OR (61B) SEE WIRING INSTL-TV/DVD FOR ADDITIONAL INFORMATION.

- (099) SLIDEOUT ROOM - DELETE
- (61B) TV-26"AC,STEREO SYS,VDEO SEL
- (53Z) WTR HTR-6GAL/110/LP/MTR/AUTO
- (68B) TV (REAR)DC 22" LCD W/REMOTE
- (1MA) ENTERTAINMENT SYSTEM
- (40B) INVERTER-DC/AC, 300 WATT
- (23R) DRAINAGE SYSTEM/HEAT-PREWIRE
- (23T) DRAINAGE SYSTEM-HEATED
- (09L) SLIDEOUT ROOM FRONT LEFT
- (265) CODES/STANDARDS-CSA/CMVSS
- (1B1) CODES/STANDARDS USA

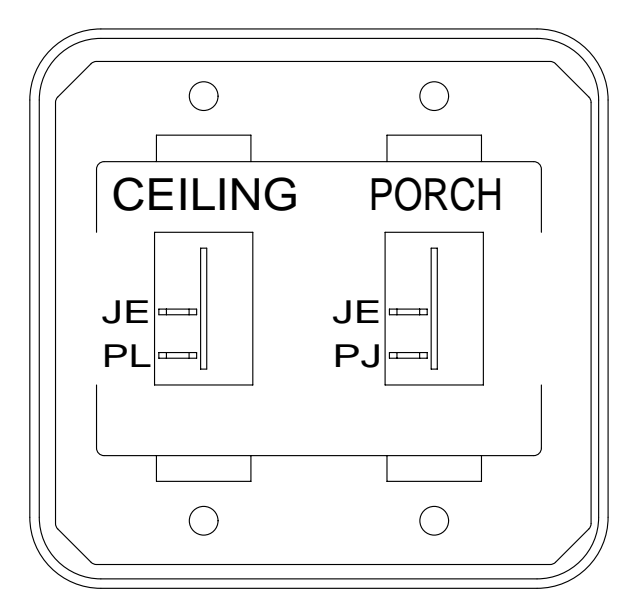
FOR ELECTRICAL TORQUE SPECIFICATIONS SEE DWG NO. 128783-01-000

FOR ELECTRICAL CALLOUTS SEE DWG NO. 121339-01-000

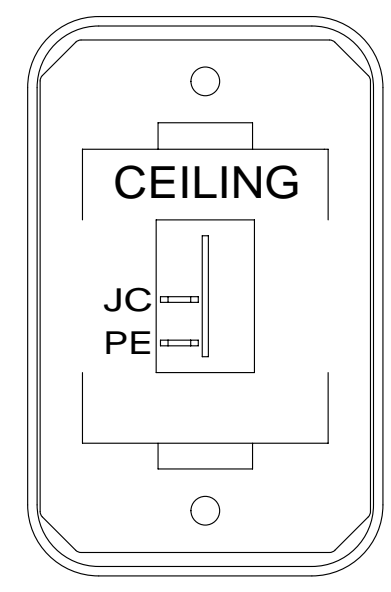
FIRST USED		<b>13 231W</b>	
<b>DO NOT SCALE DRAWING</b>			
<b>WIRING INSTL-BODY,12V</b>			
SHEET 2	PART NO	<b>181375</b>	REV



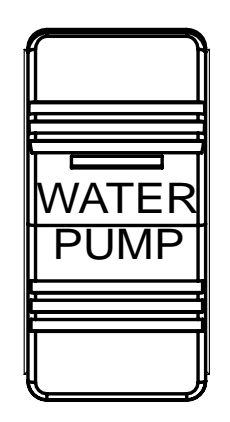
DETAIL CA



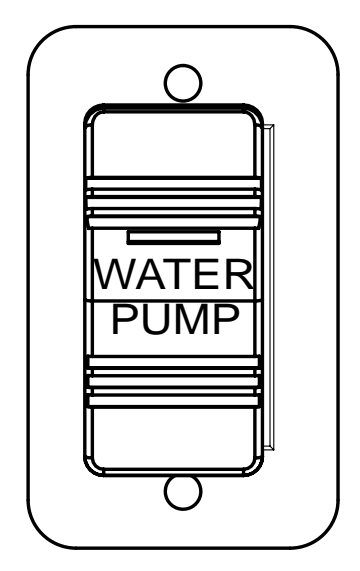
DETAIL CB



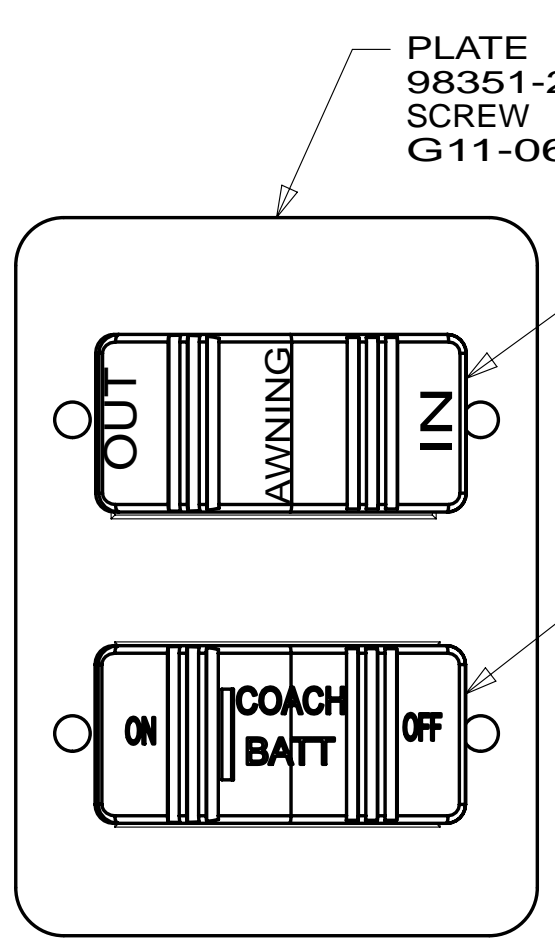
DETAIL CC



DETAIL CD 64R



DETAIL CE



DETAIL CF

SWITCH-ROCKER  
135740-01-CHT  
SWITCH-BASE  
135741-01-CHT  
SWITCH-BEZEL  
135742-07-CHT  
SCREW  
G11-08-08U (2)

SWITCH-ROCKER  
135740-06-CHT  
SWITCH-BASE  
135741-01-CHT  
SWITCH-BEZEL  
135742-01-CHT  
SCREW  
G11-08-08U (2)  
LABEL-SWITCH  
134563-01-CHT

HOLDING TANK HEATER  
TURN OFF When Not In Use  
SEE OPERATORS MANUAL

DETAIL CG 23T 23R

SWITCH-PUMP  
108357-15-000  
ACTUATOR  
108356-23-CHT

SWITCH-ROCKER  
135740-06-CHT  
SWITCH-BASE  
135741-01-CHT  
SWITCH-BEZEL  
135742-35-CHT  
SCREW  
G11-08-08U (2)

DETAIL CH 53Z

SWITCH-PUMP  
108357-15-000  
ACTUATOR  
108356-23-CHT  
PLATE  
98351-07-CHT  
SCREW  
G11-06-10U (2)

PLATE  
98351-22-CHT  
SCREW  
G11-06-10U (4)

SWITCH-AWNING  
108357-06-000  
ACTUATOR-SWITCH  
108356-12-CHT

SWITCH-BATT DISC  
108357-17-000  
ACTUATOR  
108356-19-CHT  
(CIRCUITS  
LG, LH, LJ, JF, NF)

- 1D2 SLIDEOUT ROOM-REAR RIGHTHAND
- 53Z WTR HTR-6GAL/110/LP/MTR/AUTO
- 64R EXTERIOR WASH STATION
- 23R DRAINAGE SYSTEM/HEAT-PREWIRE
- 23T DRAINAGE SYSTEM-HEATED
- 265 CODES/STANDARDS-CSA/CMVSS
- 1B1 CODES/STANDARDS USA

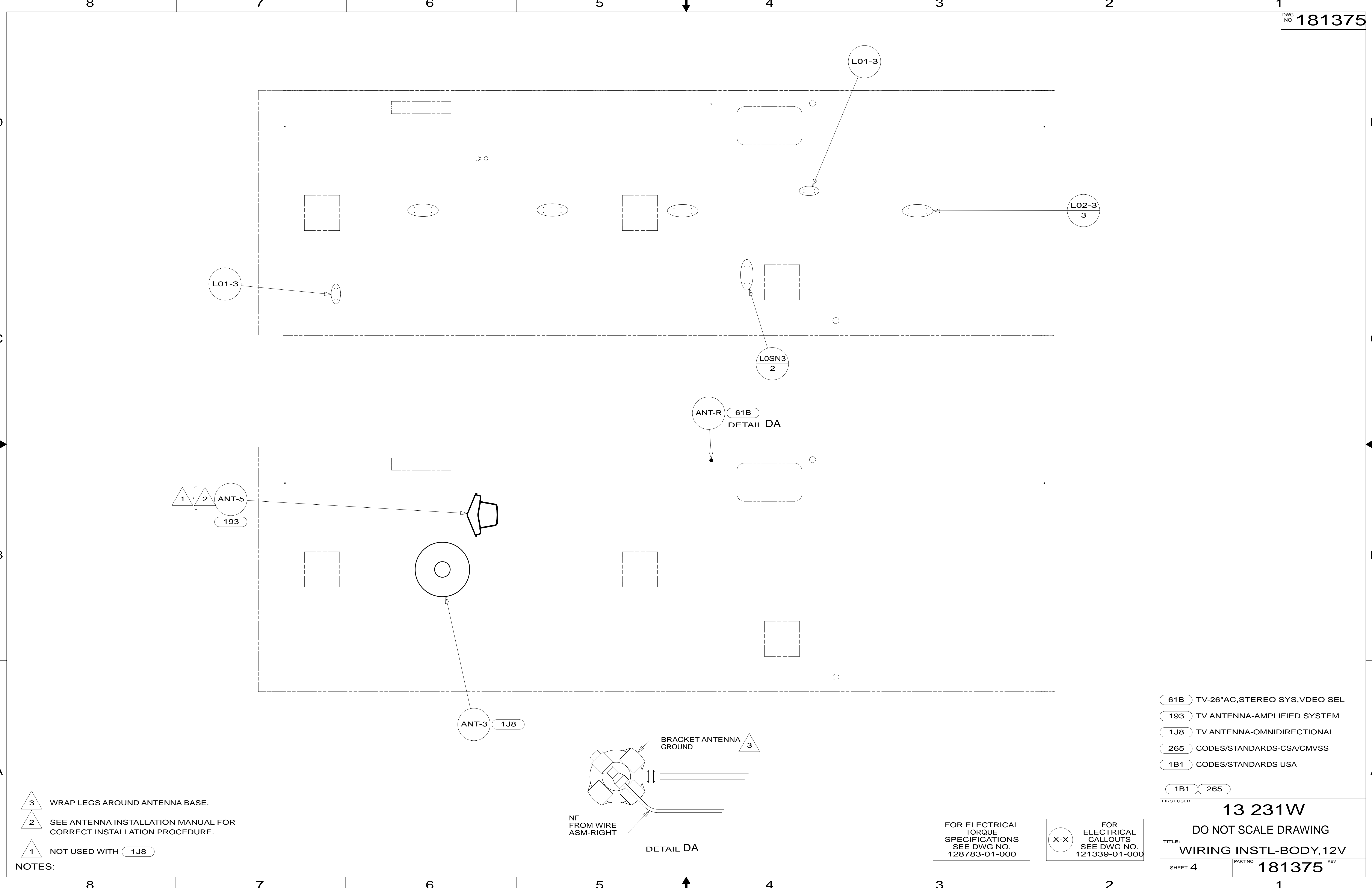
1B1	265
FIRST USED	
<b>13 231W</b>	
DO NOT SCALE DRAWING	
TITLE: <b>WIRING INSTL-BODY, 12V</b>	
SHEET 3	PART NO. <b>181375</b> REV

FOR ELECTRICAL  
TORQUE  
SPECIFICATIONS  
SEE DWG NO.  
128783-01-000

FOR  
ELECTRICAL  
CALLOUTS  
SEE DWG NO.  
121339-01-000

1 INSTALL SWITCH INTO STEP SWITCH LOCATION BUT DO NOT CONNECT THE AWNING WIRES TO THE SWITCH WITH 644

NOTES:



- NOTES:
- 3 WRAP LEGS AROUND ANTENNA BASE.
  - 2 SEE ANTENNA INSTALLATION MANUAL FOR CORRECT INSTALLATION PROCEDURE.
  - 1 NOT USED WITH 1J8

- 61B TV-26"AC,STEREO SYS,VDEO SEL
- 193 TV ANTENNA-AMPLIFIED SYSTEM
- 1J8 TV ANTENNA-OMNIDIRECTIONAL
- 265 CODES/STANDARDS-CSA/CMVSS
- 1B1 CODES/STANDARDS USA

FIRST USED		<b>13 231W</b>	
<b>DO NOT SCALE DRAWING</b>			
TITLE: <b>WIRING INSTL-BODY,12V</b>			
SHEET 4	PART NO.	<b>181375</b>	REV

FOR ELECTRICAL TORQUE SPECIFICATIONS SEE DWG NO. 128783-01-000

FOR ELECTRICAL CALLOUTS SEE DWG NO. 121339-01-000

