



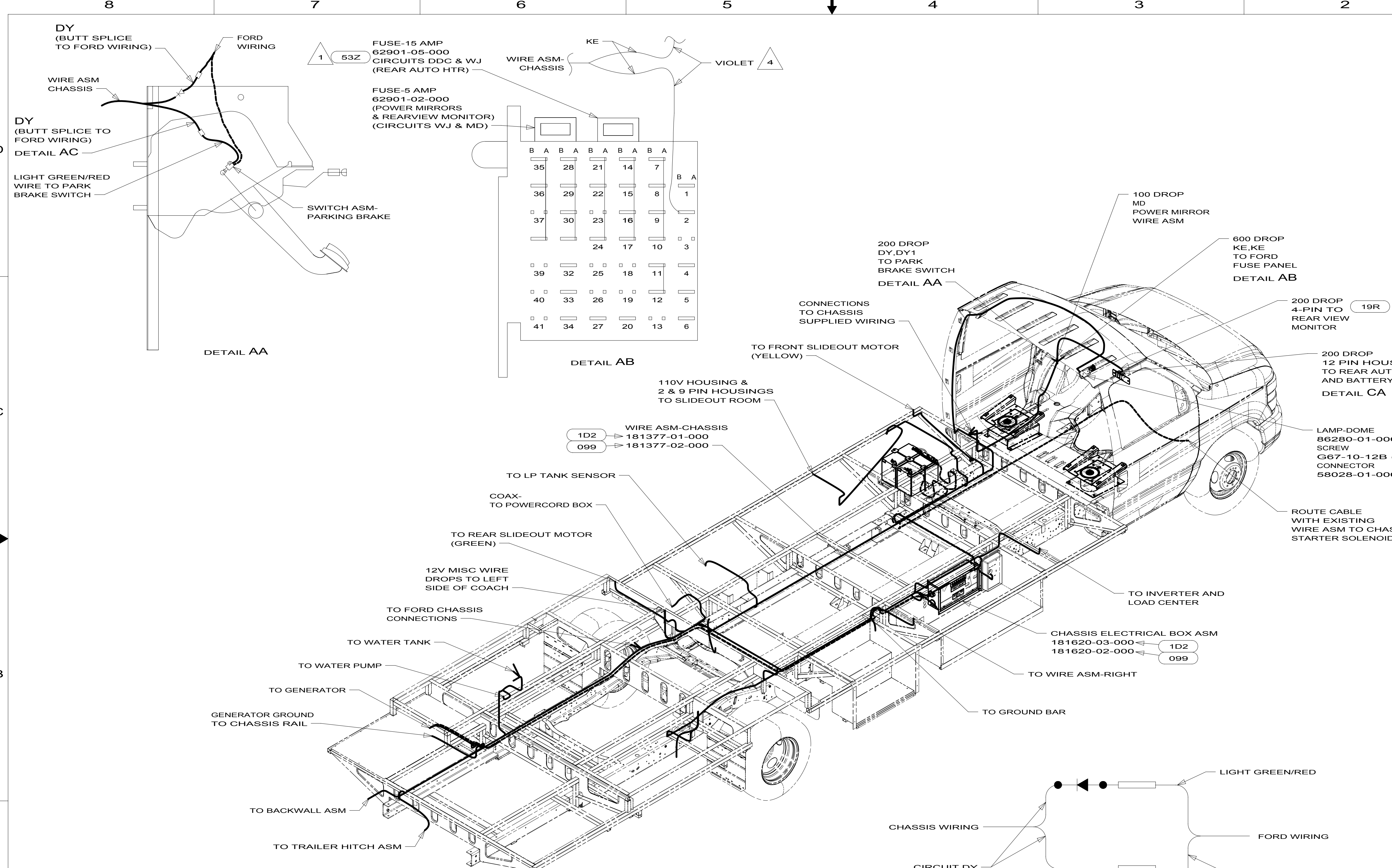
**DANGER**

**Danger of electrical shock, burns or death.** Always remove all power sources before attempting any repair, service or diagnostic work. Power can be present from shore power, generator, inverter or battery. All power sources must be disabled and secured before performing any service.



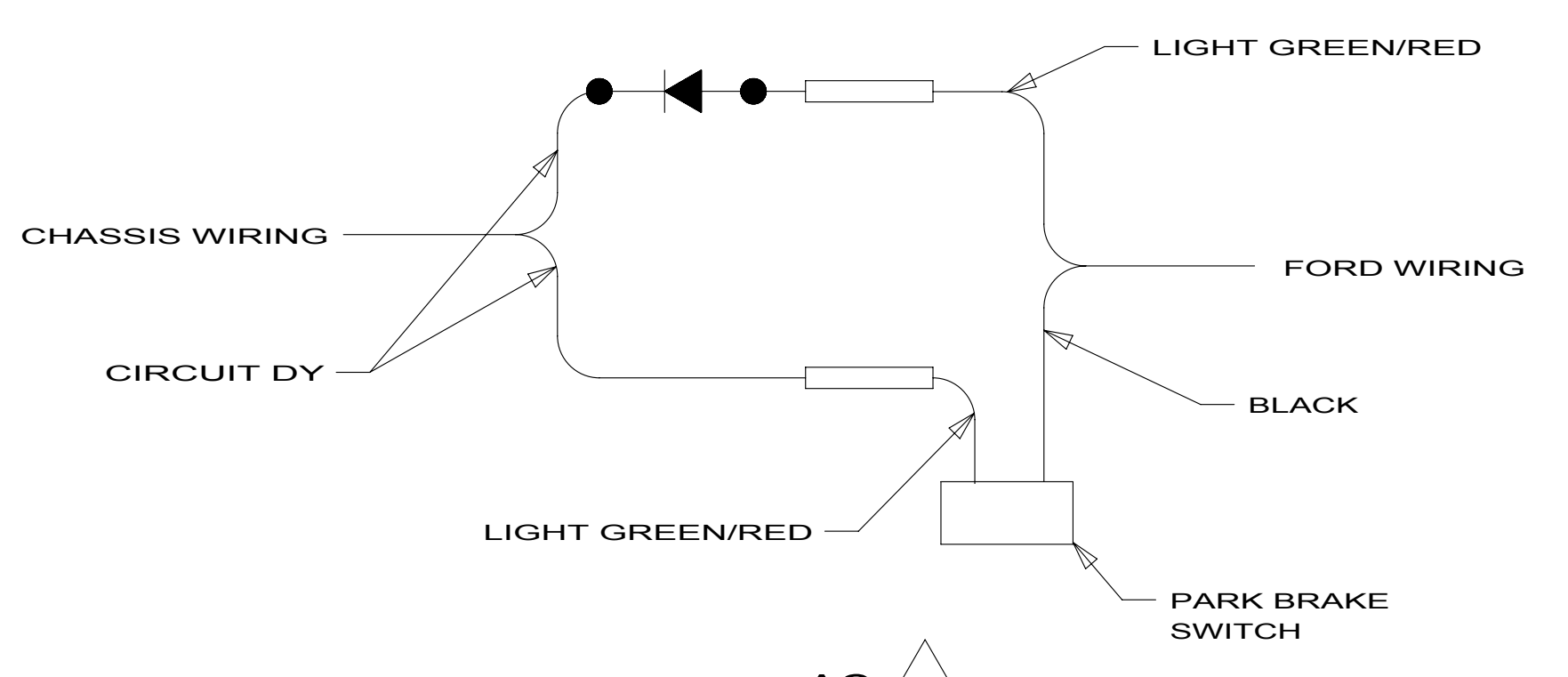
**CAUTION**

If you lack the skills, tools or equipment to perform diagnostic or repair work leave such work to an authorized Winnebago Industries dealer or other qualified shop.



- NOTES:**
- 5 CUT LIGHT GREEN/RED WIRE FROM PARK BRAKE SWITCH AND RECONNECT TO CIRCUIT DY OF CHASSIS ASM AS SHOWN.
  - 4 CUT WIRE AND RECONNECT AS SHOWN.
  - 3. USE WIRE TIES 8343-04-000 AND 116673-01-000 APPROXIMATELY 600MM ON CENTER UNLESS OTHERWISE SPECIFIED.
  - 2. SECURE CONDUIT 41953, TAB AS REQUIRED, OVER ALL WIRES IN CONTACT WITH SHARP EDGES.
  - 1 WIRING IS PART OF WIRE ASM-CHASSIS.

B	A	B	A	B	A	B	A	B	A
35	28	21	14	7					
36	29	22	15	8	B	A			
37	30	23	16	9					
		24	17	10					
39	32	25	18	11					
40	33	26	19	12					
41	34	27	20	13					



- 1D2 SLIDEOUT ROOM-REAR RIGHTHAND
- 099 SLIDEOUT ROOM - DELETE
- 53Z WTR HTR-6GAL/110/LP/MTR/AUTO
- 19R REARVIEW MONITOR SYSTEM
- 16Y FORD CHASSIS - 14,500#\_GVWR
- 265 CODES/STANDARDS-CSA/CMVSS
- 1B1 CODES/STANDARDS USA

**WINNEBAGO INDUSTRIES**

COPYRIGHT 2011 WINNEBAGO INDUSTRIES, INC.

ALL DIMENSIONS ARE IN MILLIMETERS

13 231W

UNSPECIFIED TOLERANCES ARE:

WHOLE DIM (X)	: 3
ONE-PLACE (X.X)	: 1.5
TWO-PLACE (X.XX)	: 0.50
ANGLE	: 1°

THIRD ANGLE PROJECTION

DO NOT SCALE DRAWING REFER TO ES0018 FOR FASTENER TIGHTENING GUIDELINES

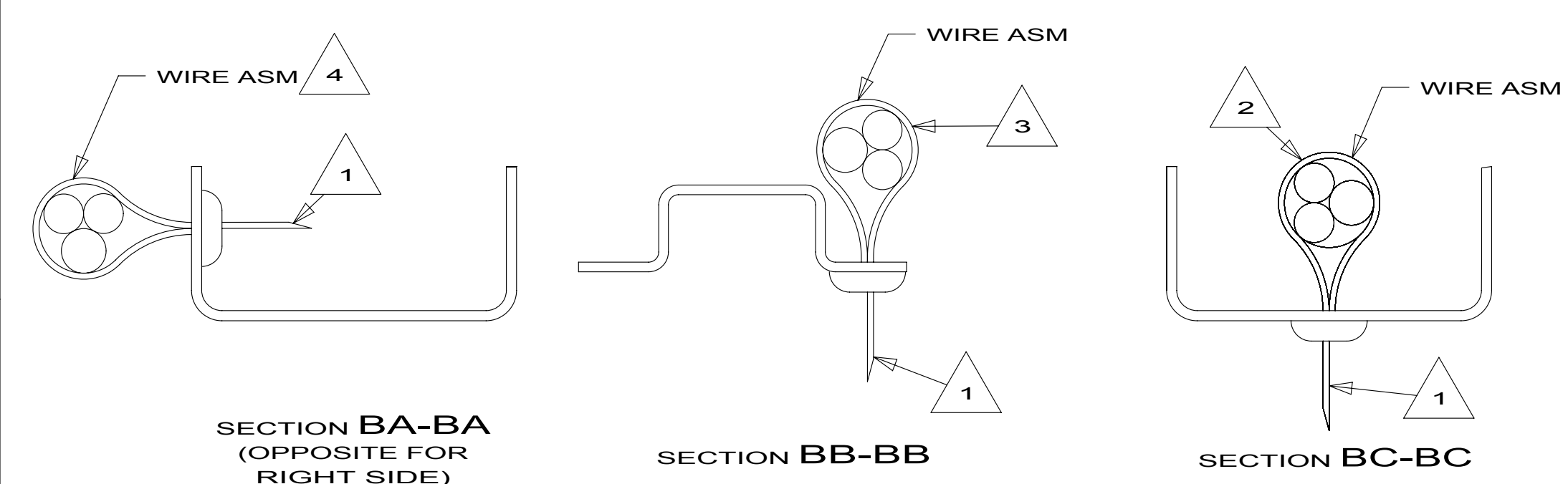
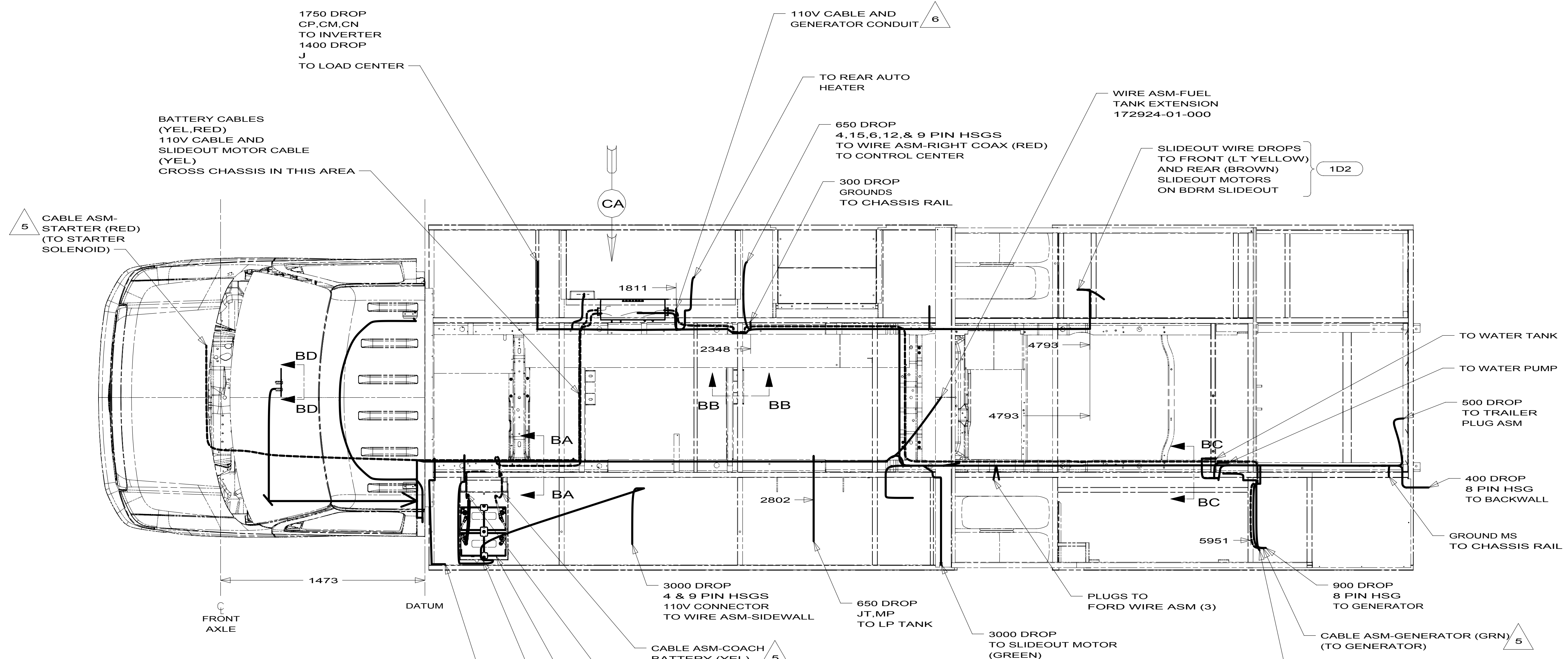
TITLE: **WIRING INSTL-CHASSIS**

SHEET 1 OF 3 PART NO 181374 REV

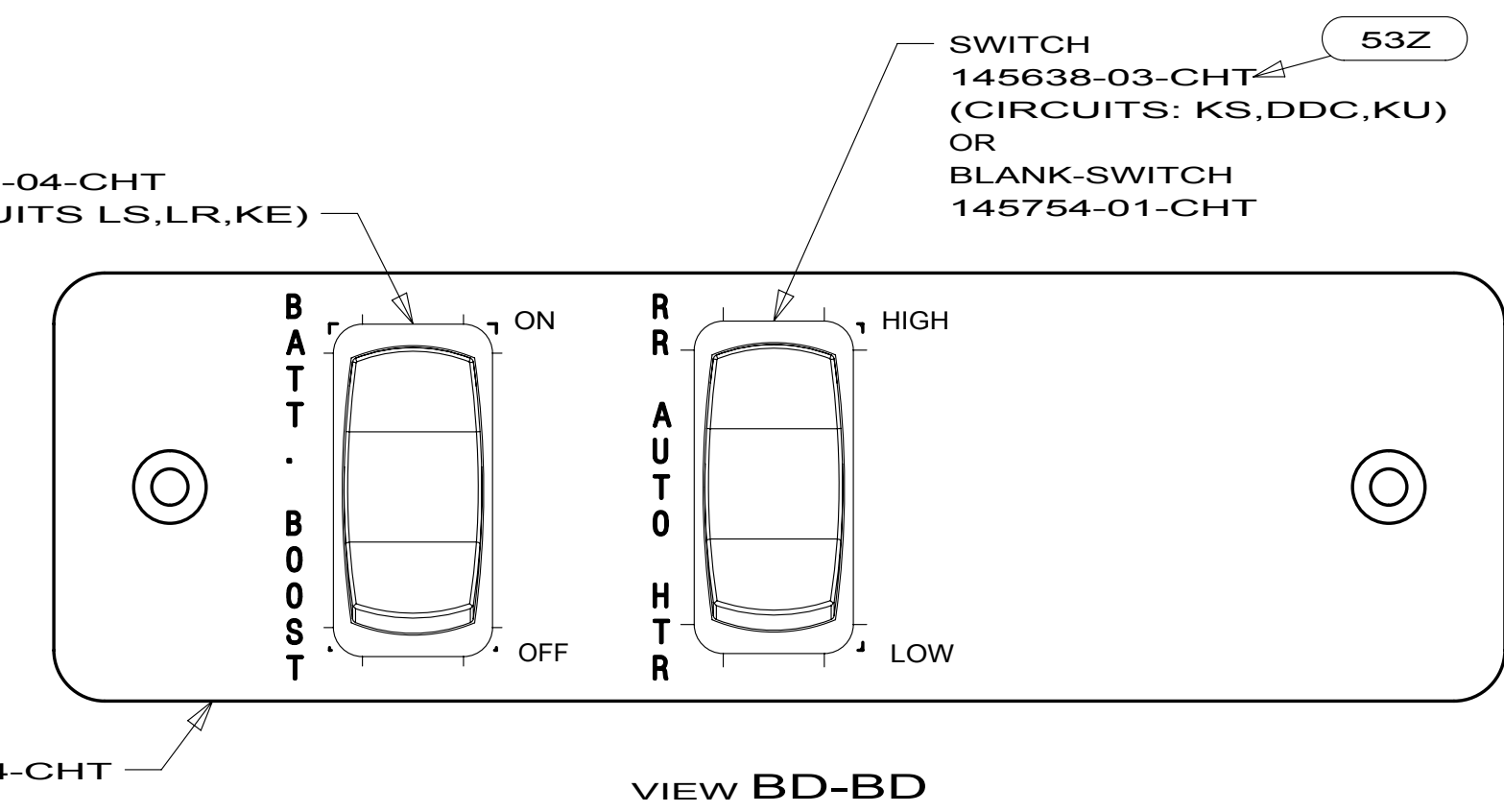
REF: 1 3/14/2012

FOR ELECTRICAL TORQUE SPECIFICATIONS SEE DWG NO. 128783-01-000

FOR ELECTRICAL CALLOUTS SEE DWG NO. 121339-01-000



- NOTES:
- 6 WIRE ROUTES THROUGH FLOOR IN THIS AREA.
  - 5 SEE BATTERY INSTL FOR ADDITIONAL INFORMATION.
  - 4 WIRES TO BE TIED TO CROSS MEMBER USING EXISTING HOLES.
  - 3 WIRES TO BE TIED TO TOP OF RAIL USING EXISTING HOLES.
  - 2 WIRES TO BE TIED TO INSIDE OF RAIL USING EXISTING HOLES.
  - 1 CUT OFF EXCESS END OF WIRE TIE.

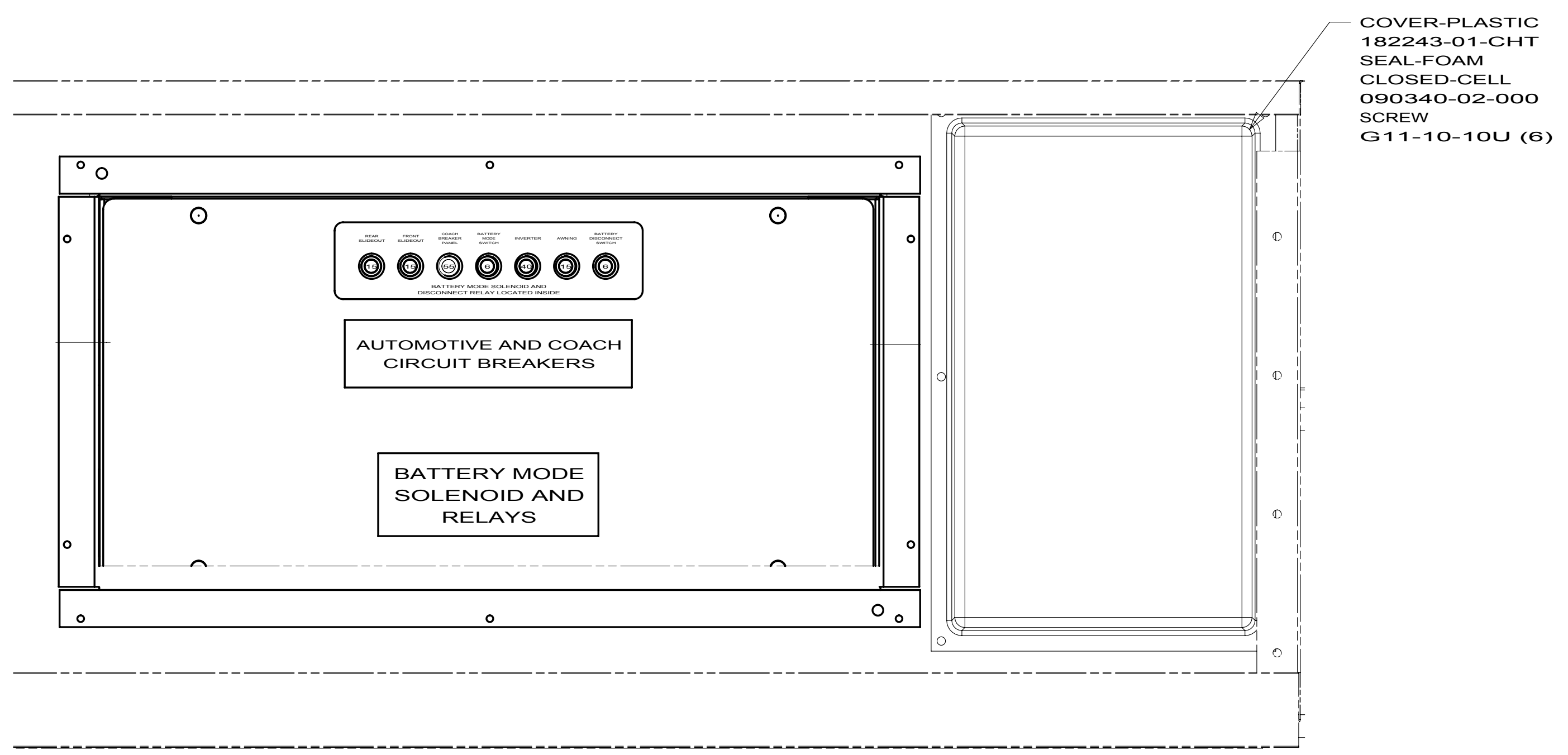


FOR ELECTRICAL TORQUE SPECIFICATIONS SEE DWG NO. 128783-01-000

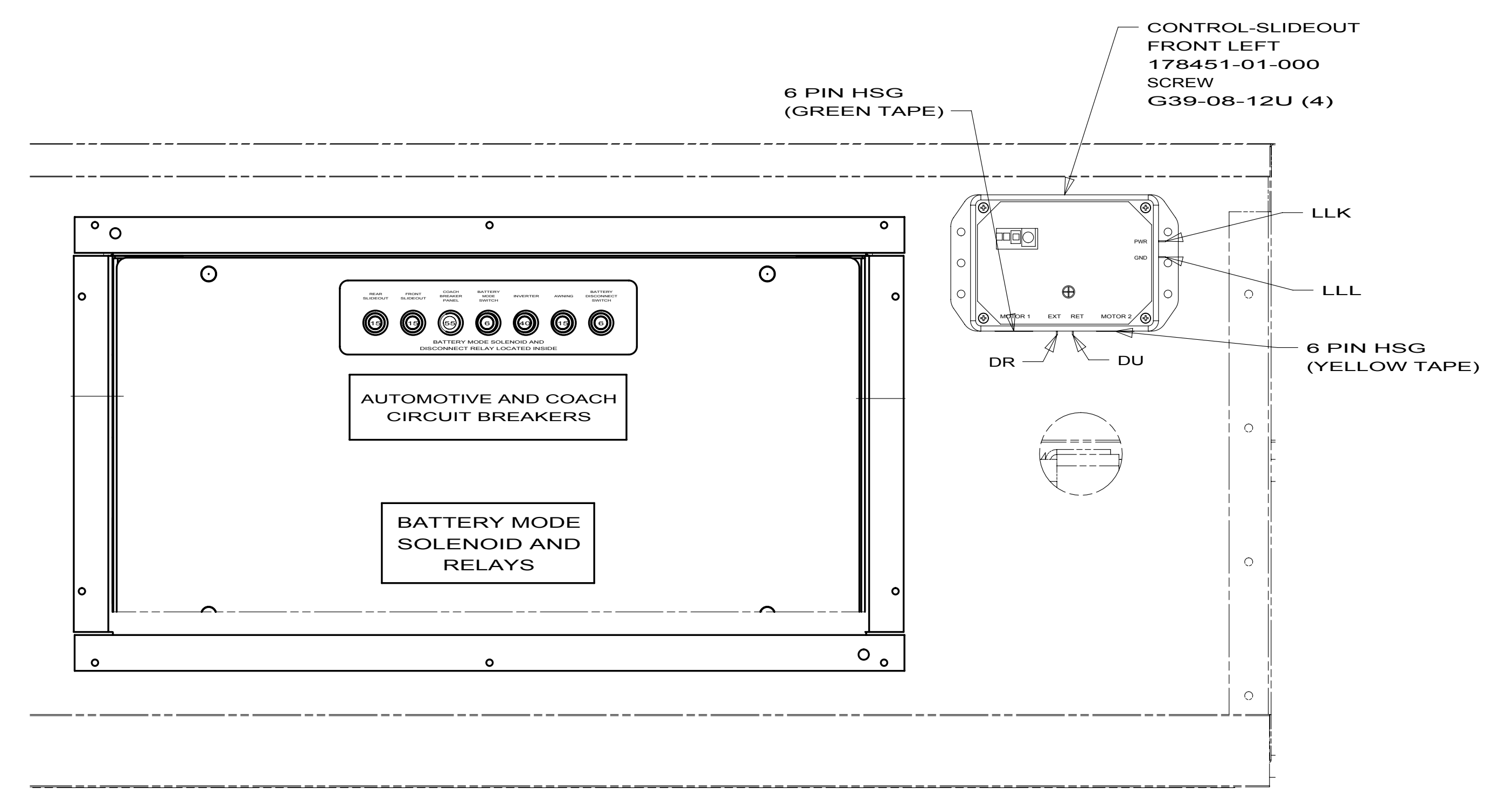
FOR ELECTRICAL CALLOUTS SEE DWG NO. 121339-01-000

- 1D2 SLIDEOUT ROOM-REAR RIGHTHAND
- 53Z WTR HTR-6GAL/ELE/LP/MTR/AUTO
- 16Y FORD CHASSIS - 14,500#\_GVWR
- 265 CODES/STANDARDS-CSA/CMVSS
- 1B1 CODES/STANDARDS USA

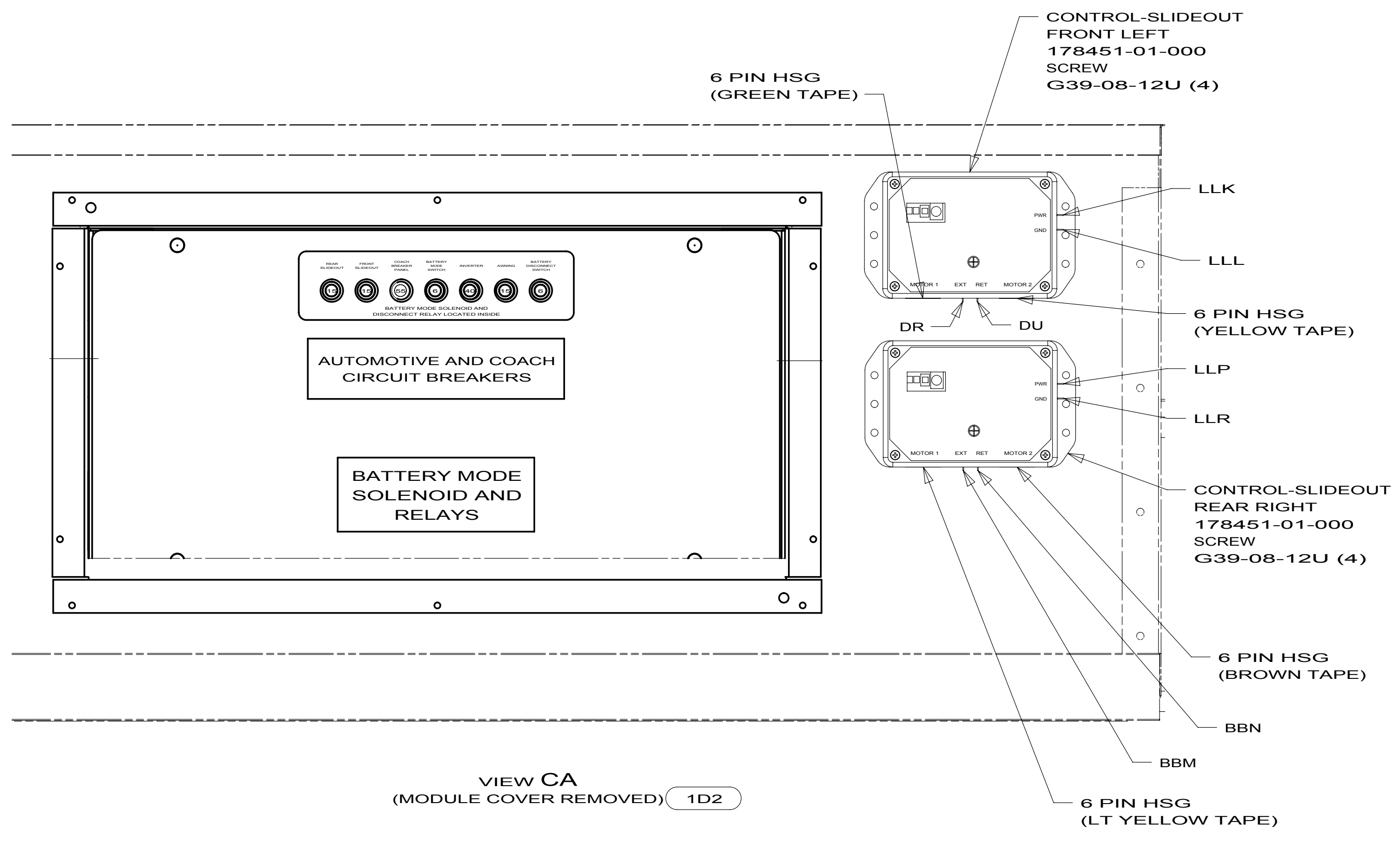
FIRST USED		<b>13 231W</b>	
<b>DO NOT SCALE DRAWING</b>			
<b>TITLE: WIRING INSTL-CHASSIS</b>			
SHEET 2	PART NO	<b>181374</b>	REV



VIEW CA



VIEW CA (MODULE COVER REMOVED) 099



VIEW CA (MODULE COVER REMOVED) 1D2

- 1D2 SLIDEOUT ROOM-REAR RIGHTHAND
- 099 SLIDEOUT ROOM - DELETE
- 16Y FORD CHASSIS - 14,500#\_GVWR
- 265 CODES/STANDARDS-CSA/CMVSS
- 1B1 CODES/STANDARDS USA

FIRST USED		<b>13 231W</b>	
<b>DO NOT SCALE DRAWING</b>			
<b>TITLE: WIRING INSTL-CHASSIS</b>			
SHEET 3	PART NO.	<b>181374</b>	REV

FOR ELECTRICAL TORQUE SPECIFICATIONS SEE DWG NO. 128783-01-000

FOR ELECTRICAL CALLOUTS SEE DWG NO. 121339-01-000