



**DANGER**

**Danger of electrical shock, burns or death.** Always remove all power sources before attempting any repair, service or diagnostic work. Power can be present from shore power, generator, inverter or battery. All power sources must be disabled and secured before performing any service.

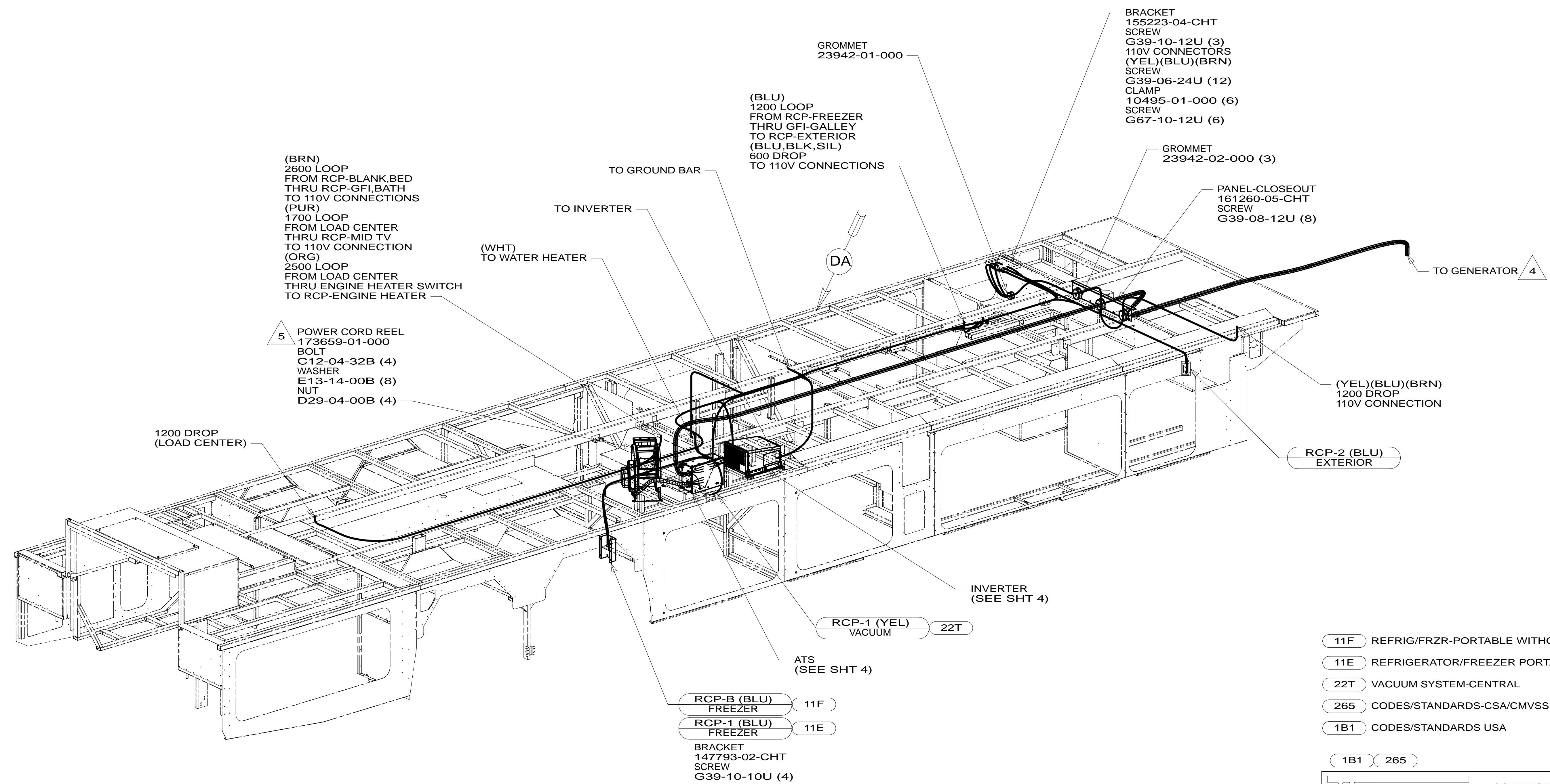


**CAUTION**

If you lack the skills, tools or equipment to perform diagnostic or repair work leave such work to an authorized Winnebago Industries dealer or other qualified shop.

DRAWING NO.	FEATURE
181366-01	-----
181366-14	1B1
181366-18	265

RELEASE	REV DATE	DWG NO	181366
REV ZONE	REVISION RECORD	DATE	DTR-ORIG



- 5 INSERT BOLT FROM BOTTOM OF COMPARTMENT.
- 4 SEE GENERATOR INSTL FOR ADDITIONAL INFORMATION.
3. WIRES THAT REST ON WIRE TRAYS ARE TO BE TIED DOWN WITH WIRE TIE 8343-04-000.
2. CLAMP TO FLOOR SUPPORT TUBES AS NECESSARY WITH CLAMP 10497-01-000.
1. ALL WIRES TO BE SECURED WITH CLAMP 10495 OR 10497 OR WIRE TIE 8343 OR 108046 EVERY 600MM, USE SCREW G67-XX-XXX OR G56-XX-XXX AS APPROPRIATE FOR INSTALLATION.

- 11F REFRIG/FRZR-PORTABLE WITHOUT
- 11E REFRIGERATOR/FREEZER PORTABL
- 22T VACUUM SYSTEM-CENTRAL
- 265 CODES/STANDARDS-CSA/CMVSS
- 1B1 CODES/STANDARDS USA

1B1 265

**WINNEBAGO** COPYRIGHT 2011 WINNEBAGO INDUSTRIES, INC.

DTR	ORIG. DATE
CHKR	ALL DIMENSIONS ARE IN MILLIMETERS
P.E.	
M.E.	FIRST USED
DSNR	<b>13 R42GD</b>

UNSPECIFIED TOLERANCES ARE:

WHOLE DIM (X)	: 3
ONE-PLACE (X.X)	: 1.5
TWO-PLACE (X.XX)	: 0.50
ANGLE	: 1'

THIRD ANGLE PROJECTION

DO NOT SCALE DRAWING REFER TO ES0018 FOR FASTENER TIGHTENING GUIDELINES

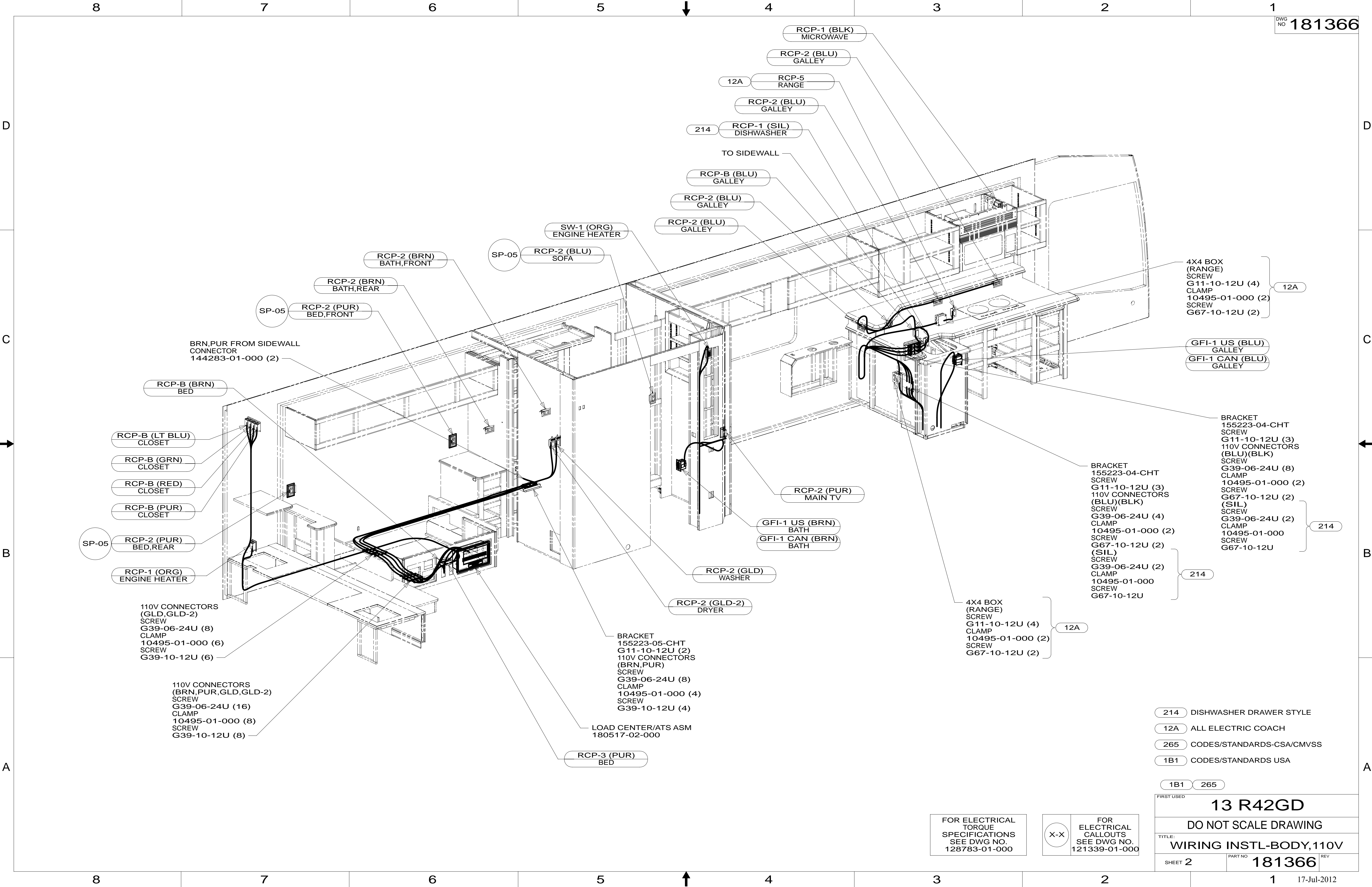
TITLE: **WIRING INSTL-BODY,110V**

SHEET 1 OF 5 PART NO **181366** REV

REF: 1 17-Jul-2012

FOR ELECTRICAL TORQUE SPECIFICATIONS SEE DWG NO. 128783-01-000

FOR ELECTRICAL CALLOUTS SEE DWG NO. 121339-01-000

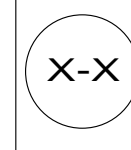


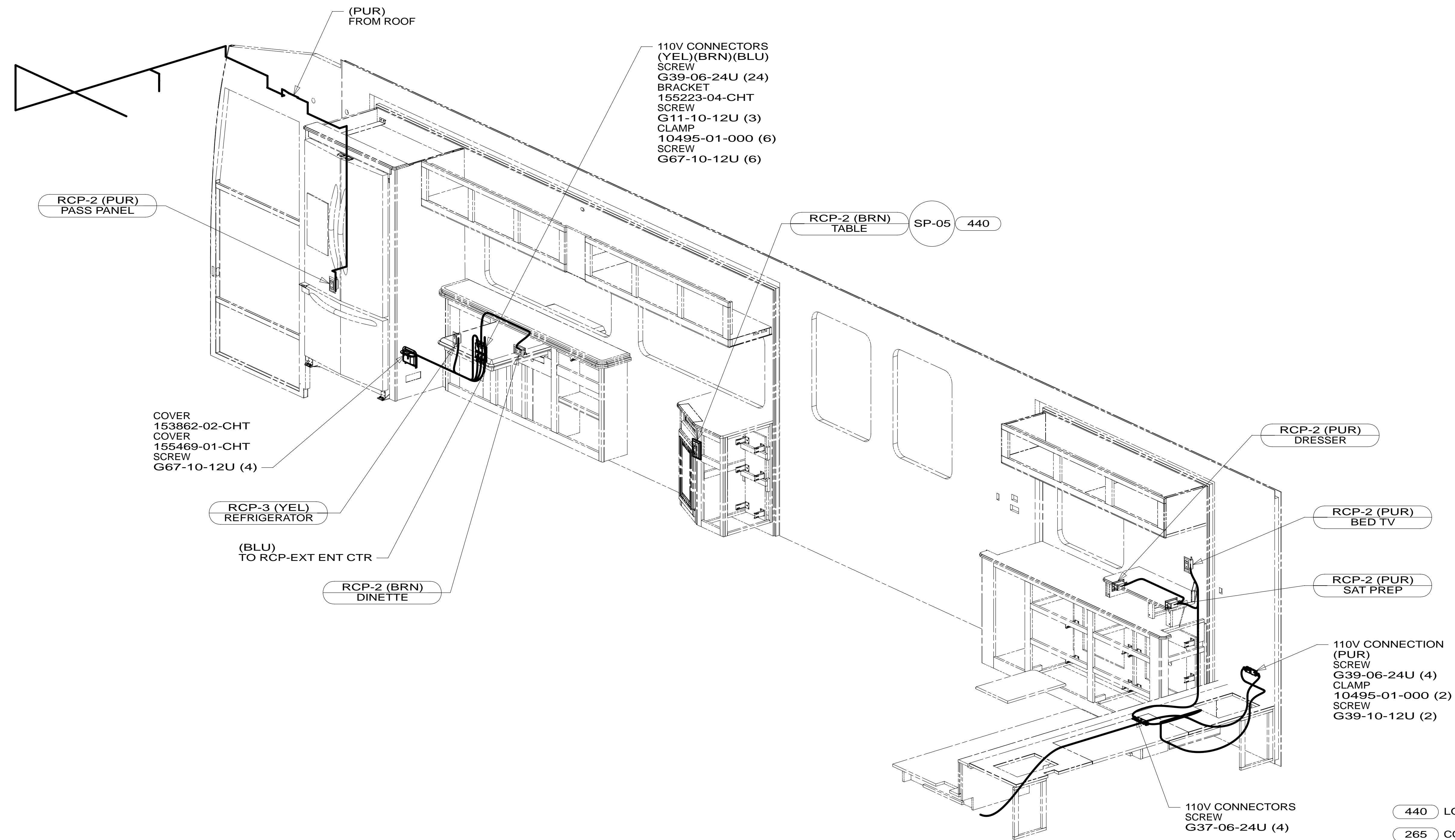
- 214 DISHWASHER DRAWER STYLE
- 12A ALL ELECTRIC COACH
- 265 CODES/STANDARDS-CSA/CMVSS
- 1B1 CODES/STANDARDS USA

1B1	265
FIRST USED	
<b>13 R42GD</b>	
DO NOT SCALE DRAWING	
TITLE: <b>WIRING INSTL-BODY,110V</b>	
SHEET 2	PART NO <b>181366</b> REV
17-Jul-2012	

FOR ELECTRICAL TORQUE SPECIFICATIONS SEE DWG NO. 128783-01-000

FOR ELECTRICAL CALLOUTS SEE DWG NO. 121339-01-000





110V CONNECTORS  
(YEL)(BRN)(BLU)  
SCREW  
G39-06-24U (24)  
BRACKET  
155223-04-CHT  
SCREW  
G11-10-12U (3)  
CLAMP  
10495-01-000 (6)  
SCREW  
G67-10-12U (6)

RCP-2 (PUR)  
PASS PANEL

RCP-2 (BRN)  
TABLE SP-05 440

COVER  
153862-02-CHT  
COVER  
155469-01-CHT  
SCREW  
G67-10-12U (4)

RCP-3 (YEL)  
REFRIGERATOR

(BLU)  
TO RCP-EXT ENT CTR

RCP-2 (BRN)  
DINETTE

RCP-2 (PUR)  
DRESSER

RCP-2 (PUR)  
BED TV

RCP-2 (PUR)  
SAT PREP

110V CONNECTION  
(PUR)  
SCREW  
G39-06-24U (4)  
CLAMP  
10495-01-000 (2)  
SCREW  
G39-10-12U (2)

110V CONNECTORS  
SCREW  
G37-06-24U (4)

- 440 LOUNGE CHAIR WITH CABINET
- 265 CODES/STANDARDS-CSA/CMVSS
- 1B1 CODES/STANDARDS USA

1B1 265

FOR ELECTRICAL  
TORQUE  
SPECIFICATIONS  
SEE DWG NO.  
128783-01-000

X-X  
FOR  
ELECTRICAL  
CALLOUTS  
SEE DWG NO.  
121339-01-000

FIRST USED		<b>13 R42GD</b>	
DO NOT SCALE DRAWING			
TITLE: <b>WIRING INSTL-BODY, 110V</b>			
SHEET 3	PART NO	<b>181366</b>	REV
			17-Jul-2012

8

7

6

5

4

3

2

1

D

D

C

C

B

B

A

A

8

7

6

5

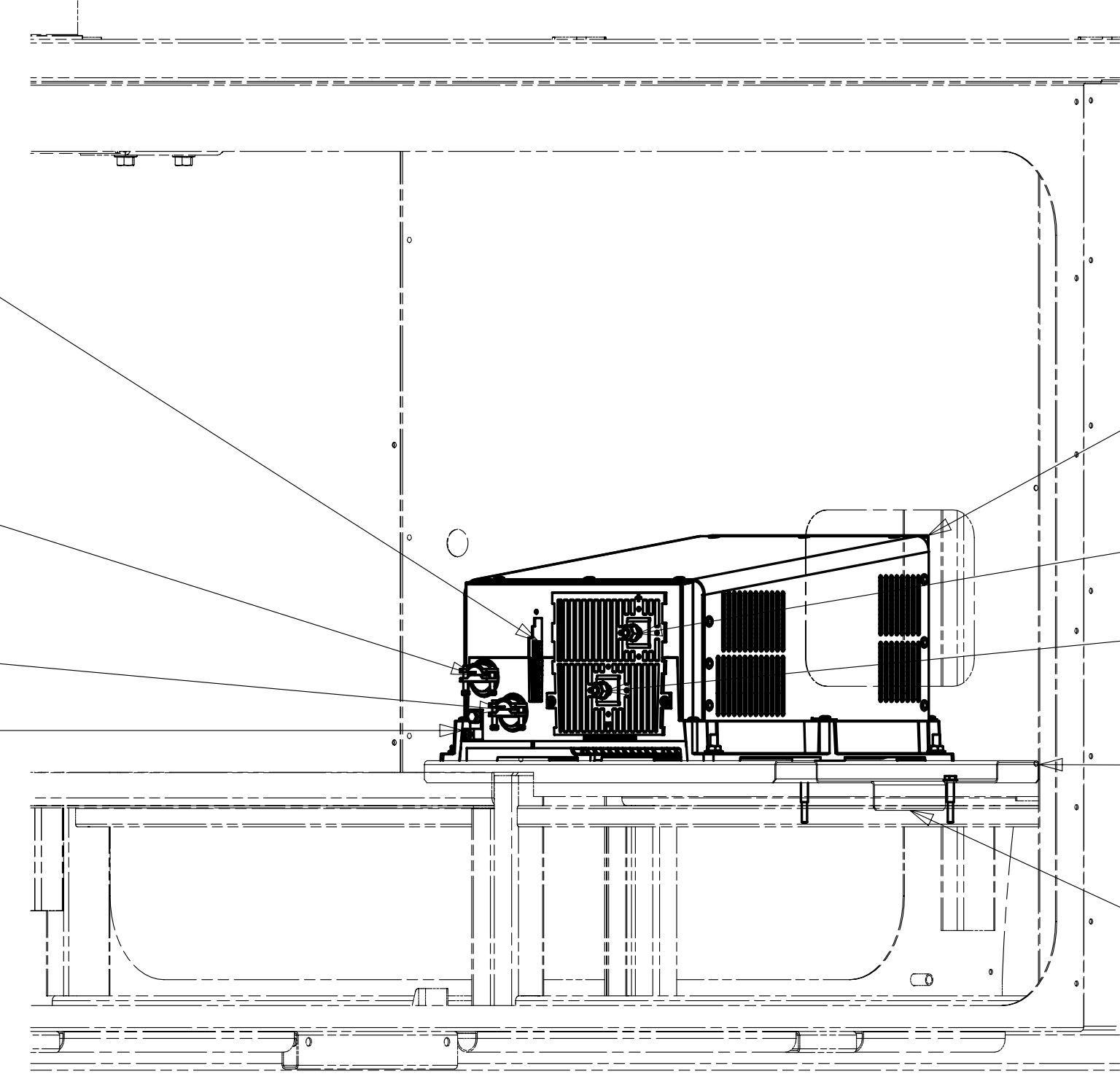
4

3

2

1

17-Jul-2012



view DA

REMOTE DISPLAY PANEL & AC TEMP SENSOR CONNECTION

AC OUTPUT  
10 GA WIRE FROM INVERTER BREAKER PANEL  
DETAIL DC

AC INPUT  
10 GA WIRE FROM MAIN BREAKER PANEL  
DETAIL DC

WIRE ASM-GROUND

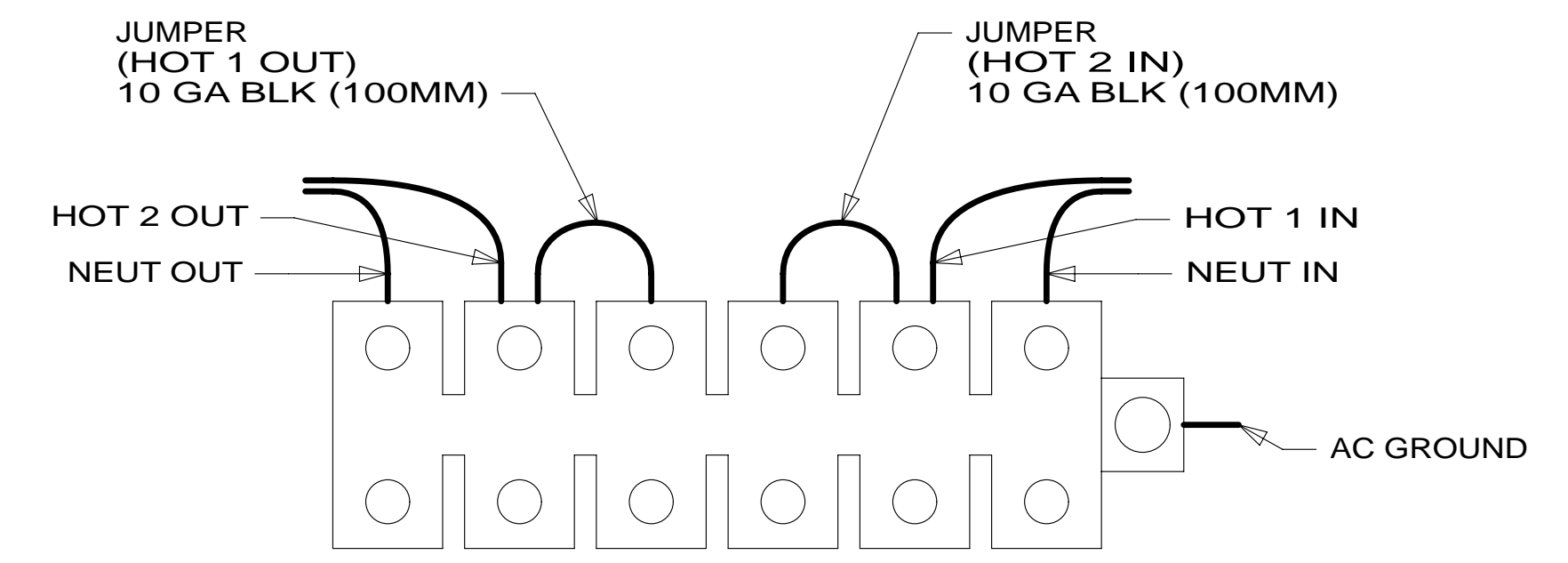
INVERTER  
175385-01-000 (79W)  
175386-01-000 (15L)  
NUT  
D39-04-00B (4)

POSITIVE BATTERY CABLE CONNECTION (2) (5)

NEGATIVE BATTERY CABLE CONNECTION (2) (5)

BRACKET  
176315-02-CHT (4)  
SCREW  
G42-04-24U (2)  
G39-10-12U (2)

THIS FLANGE TIGHT TO COMPARTMENT LIGHT



DETAIL DC

JUMPER (HOT 1 OUT)  
10 GA BLK (100MM)

JUMPER (HOT 2 IN)  
10 GA BLK (100MM)

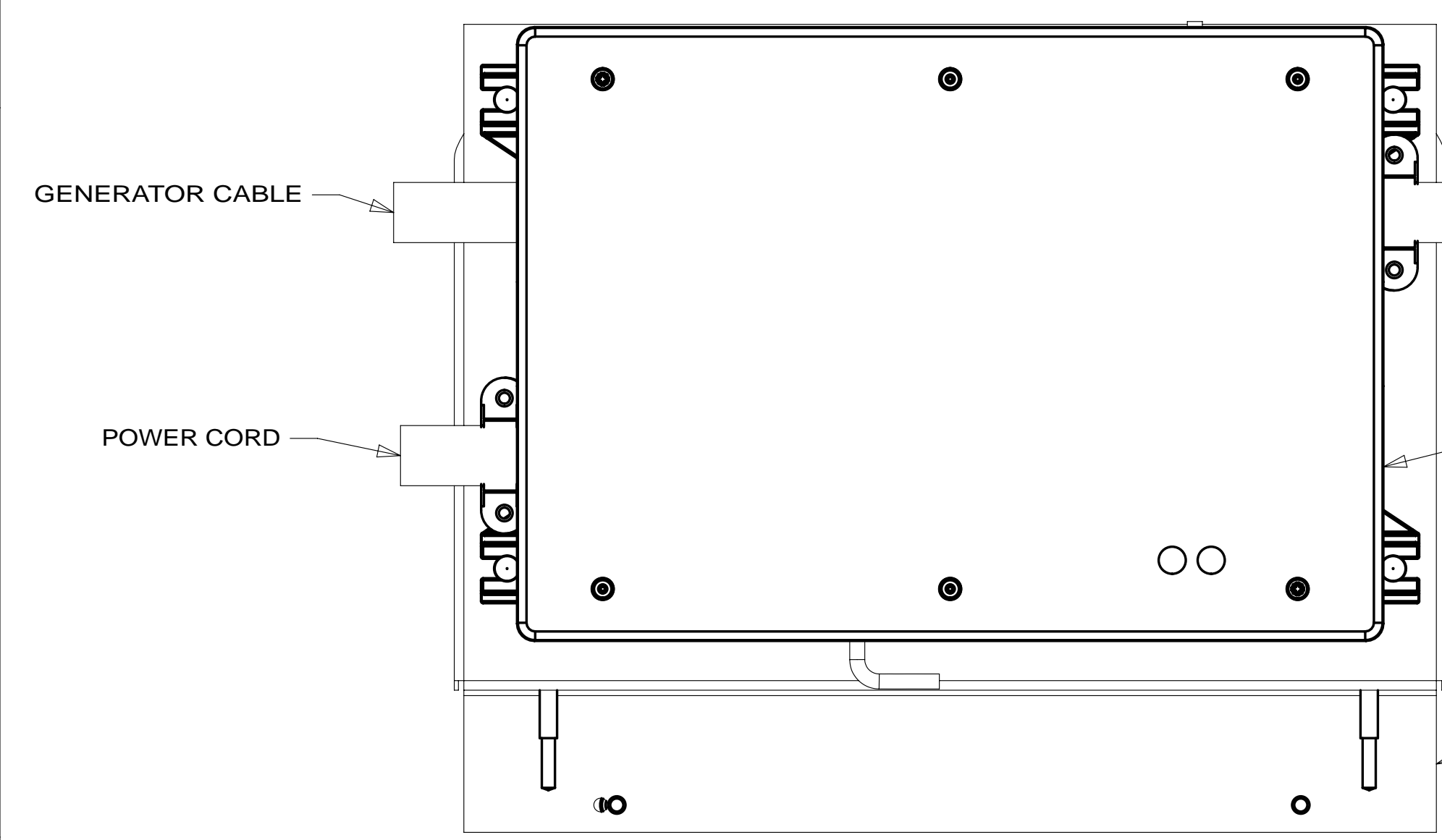
HOT 2 OUT

NEUT OUT

HOT 1 IN

NEUT IN

AC GROUND



view DB

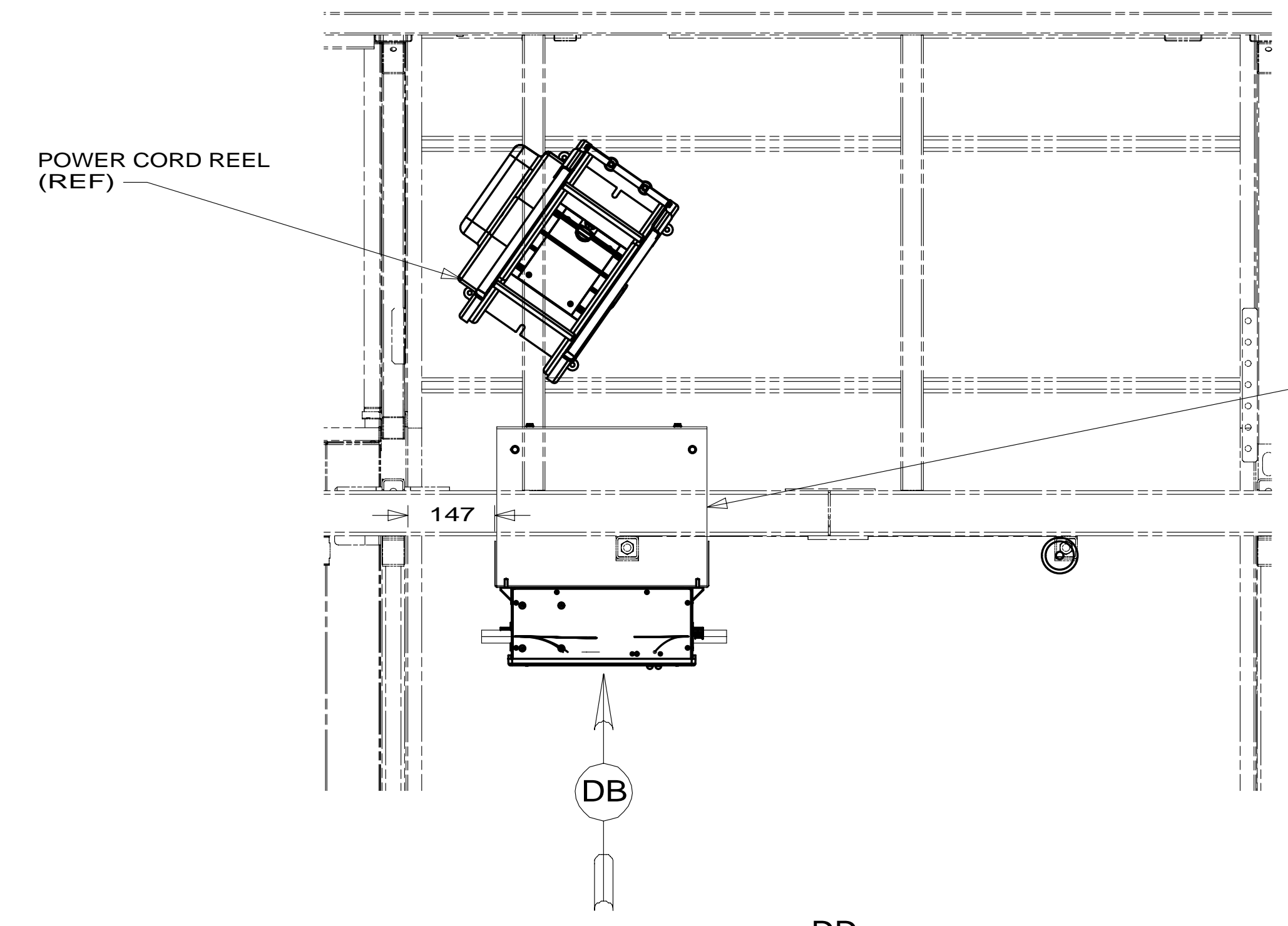
GENERATOR CABLE

POWER CORD

TO LOAD CENTER

ATS (1)

BRACKET ASM-MOUNT,ATS  
179648-02-CHT  
BOLT  
G42-04-24U (4)



view DD

POWER CORD REEL (REF)

BRACKET-ATS (REF)

147

DB

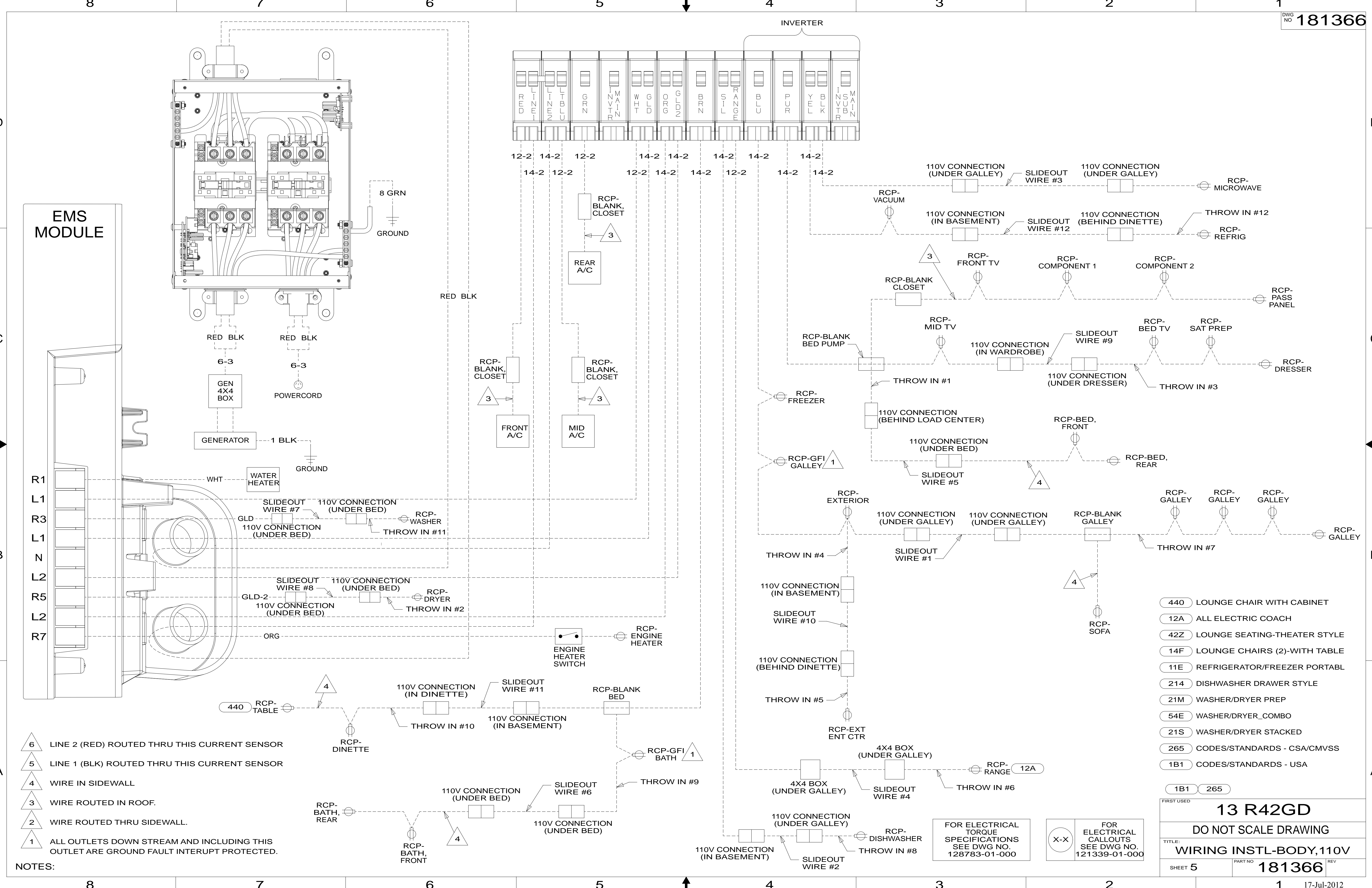
- NOTES:
- (5) TORQUE TO 10-12 FT LBS.
  - (4) INVERTER IS LOCATED BY SCREW HOLES ON CLOSEOUT PANEL.
  - (3) INSERT BOLT FROM BOTTOM OF COMPARTMENT.
  - (2) SEE BATTERY INSTL FOR ADDITIONAL INFORMATION.
  - (1) SEE LOAD CENTER/ATS ASM FOR ADDITIONAL INFORMATION.

- (15L) REFR/FRZR 2DOOR RESIDENTIAL
- (79W) REFRIGERATOR-4 DOOR
- (265) CODES/STANDARDS-CSA/CMVSS
- (1B1) CODES/STANDARDS USA

FIRST USED	
<b>13 R42GD</b>	
DO NOT SCALE DRAWING	
TITLE: <b>WIRING INSTL-BODY, 110V</b>	
SHEET 4	PART NO <b>181366</b> REV

FOR ELECTRICAL TORQUE SPECIFICATIONS SEE DWG NO. 128783-01-000

FOR ELECTRICAL CALLOUTS SEE DWG NO. 121339-01-000



- NOTES:
- △ 6 LINE 2 (RED) ROUTED THRU THIS CURRENT SENSOR
  - △ 5 LINE 1 (BLK) ROUTED THRU THIS CURRENT SENSOR
  - △ 4 WIRE IN SIDEWALL
  - △ 3 WIRE ROUTED IN ROOF.
  - △ 2 WIRE ROUTED THRU SIDEWALL.
  - △ 1 ALL OUTLETS DOWN STREAM AND INCLUDING THIS OUTLET ARE GROUND FAULT INTERRUPT PROTECTED.

440	LOUNGE CHAIR WITH CABINET
12A	ALL ELECTRIC COACH
42Z	LOUNGE SEATING-THEATER STYLE
14F	LOUNGE CHAIRS (2)-WITH TABLE
11E	REFRIGERATOR/FREEZER PORTABL
214	DISHWASHER DRAWER STYLE
21M	WASHER/DRYER PREP
54E	WASHER/DRYER_COMBO
21S	WASHER/DRYER STACKED
265	CODES/STANDARDS - CSA/CMVSS
1B1	CODES/STANDARDS - USA

FIRST USED <b>13 R42GD</b>		
DO NOT SCALE DRAWING		
TITLE: <b>WIRING INSTL-BODY, 110V</b>		
SHEET 5	PART NO.	<b>181366</b> REV
		17-Jul-2012

FOR ELECTRICAL TORQUE SPECIFICATIONS SEE DWG NO. 128783-01-000

FOR ELECTRICAL CALLOUTS SEE DWG NO. 121339-01-000