



**DANGER**

**Danger of electrical shock, burns or death.** Always remove all power sources before attempting any repair, service or diagnostic work. Power can be present from shore power, generator, inverter or battery. All power sources must be disabled and secured before performing any service.

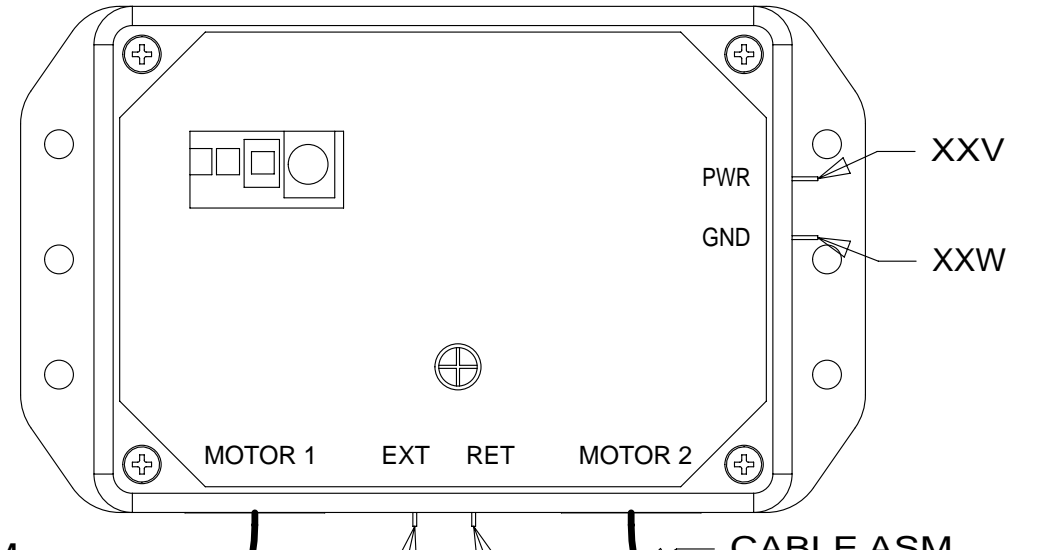
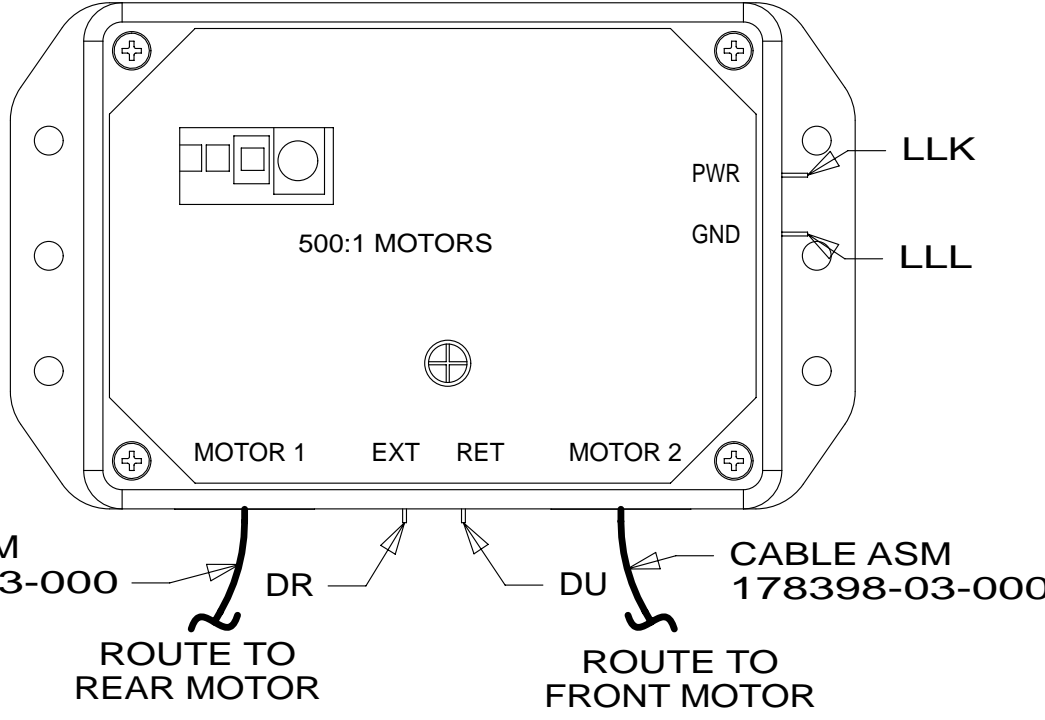
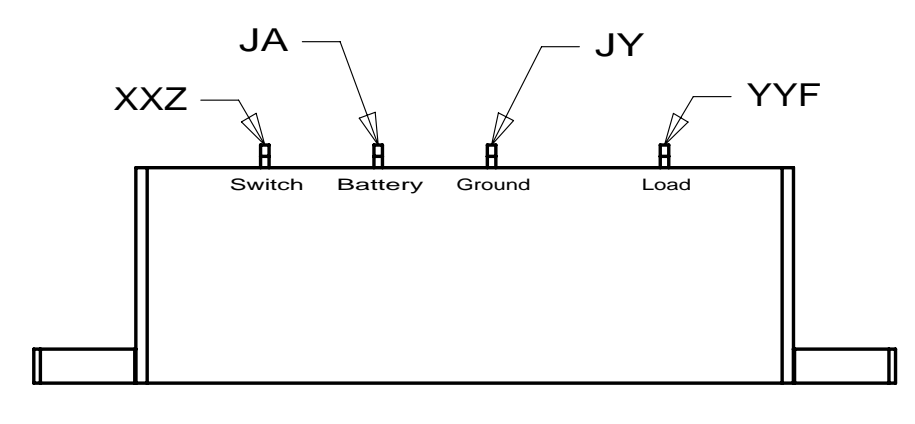
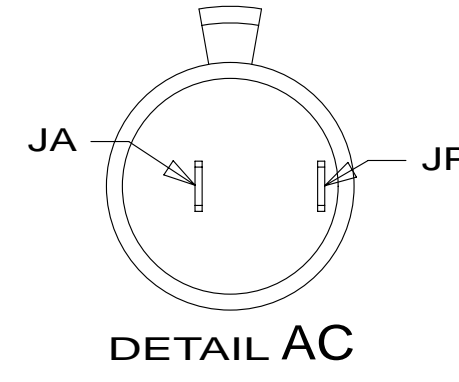
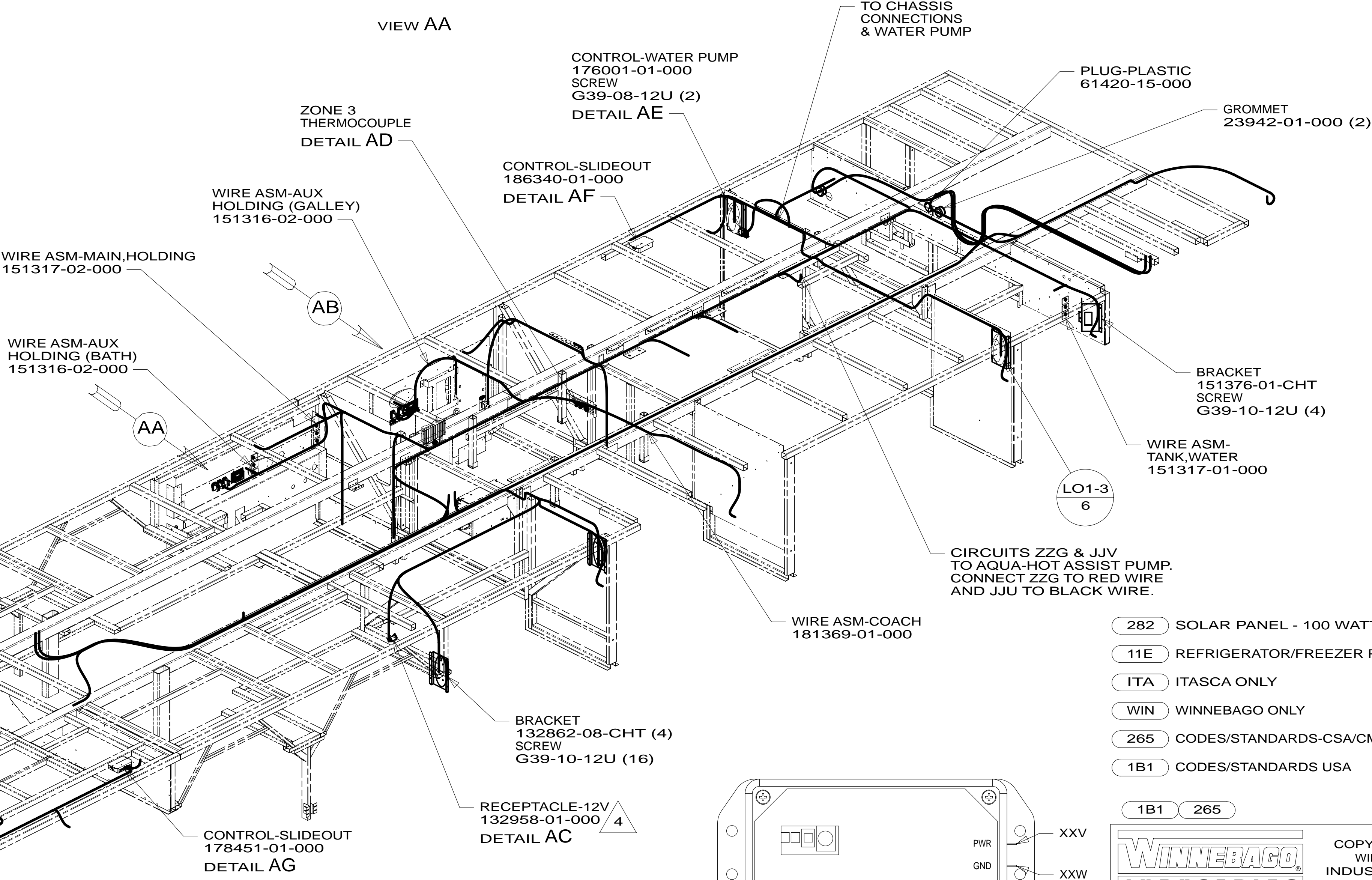
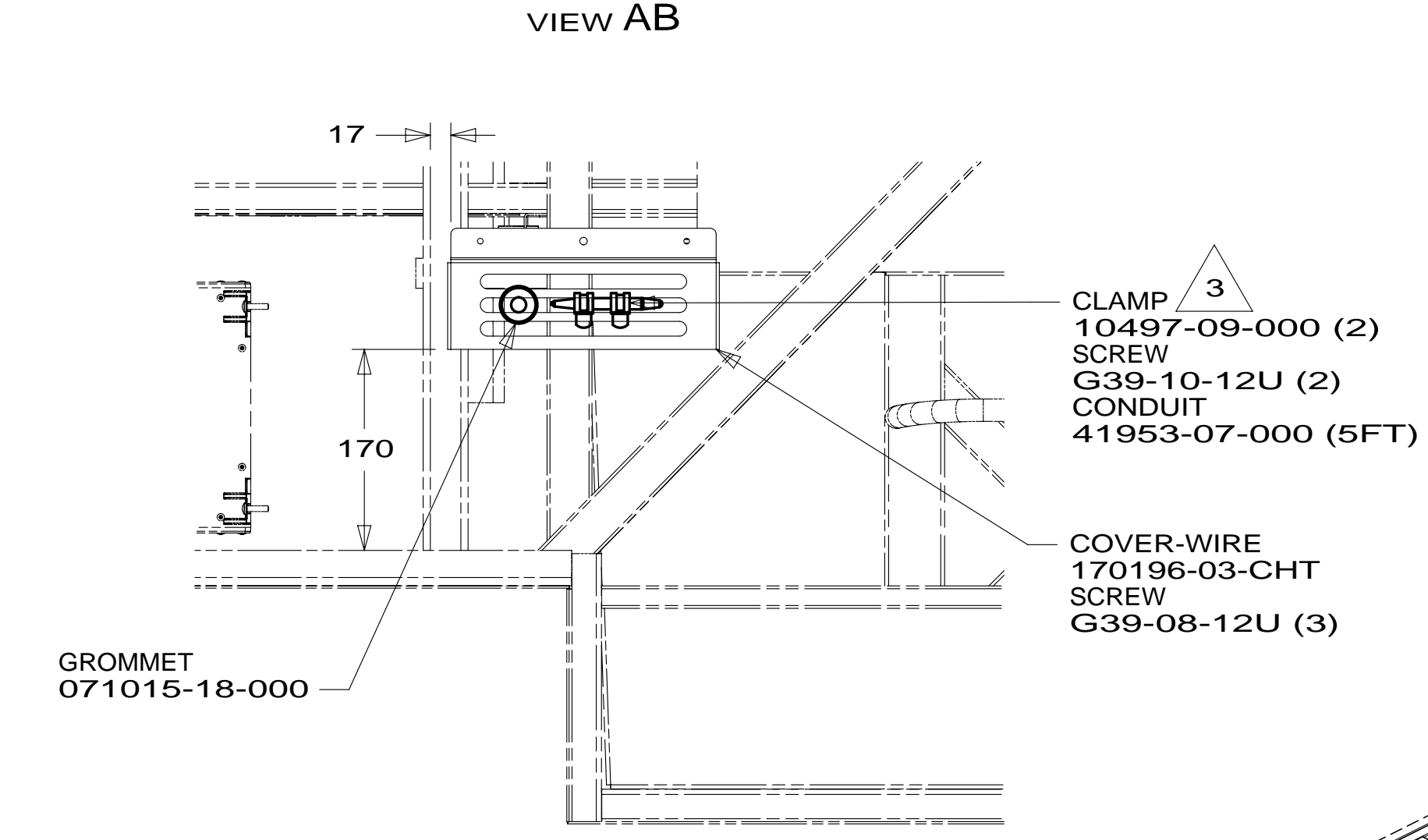
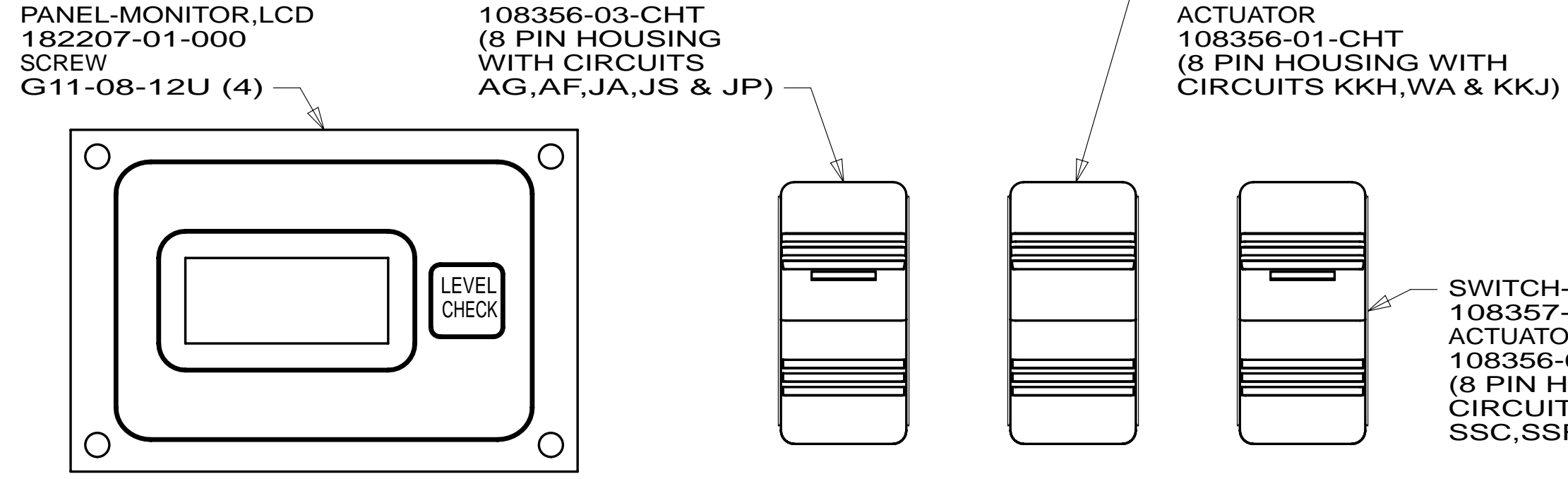
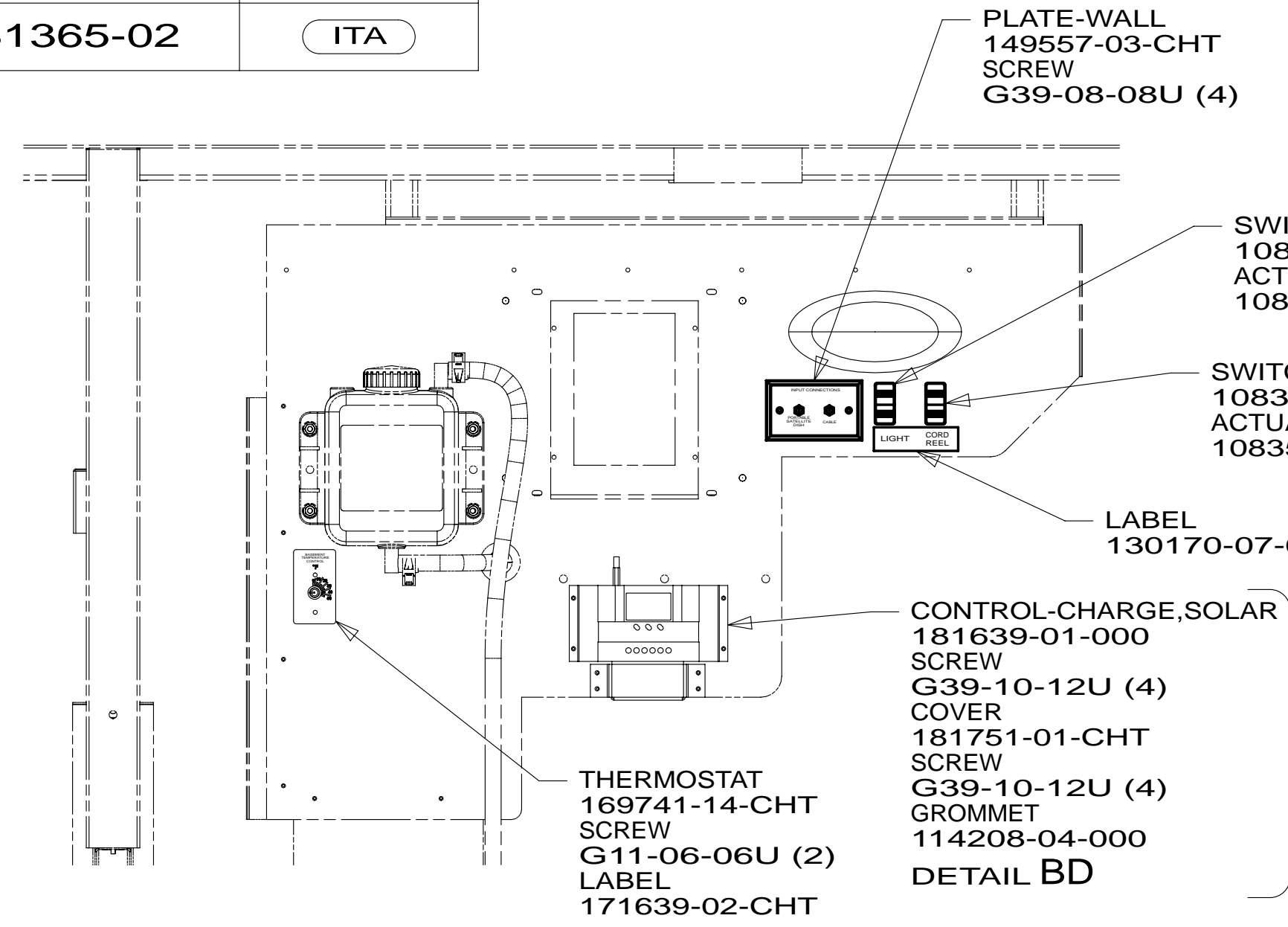


**CAUTION**

If you lack the skills, tools or equipment to perform diagnostic or repair work leave such work to an authorized Winnebago Industries dealer or other qualified shop.

DRAWING NO.	FEATURES
181365-01	WIN
181365-02	ITA

RELEASE	REV/DATE	DWG NO	181365
REV ZONE	REVISION RECORD	DATE	DFT-ORIG



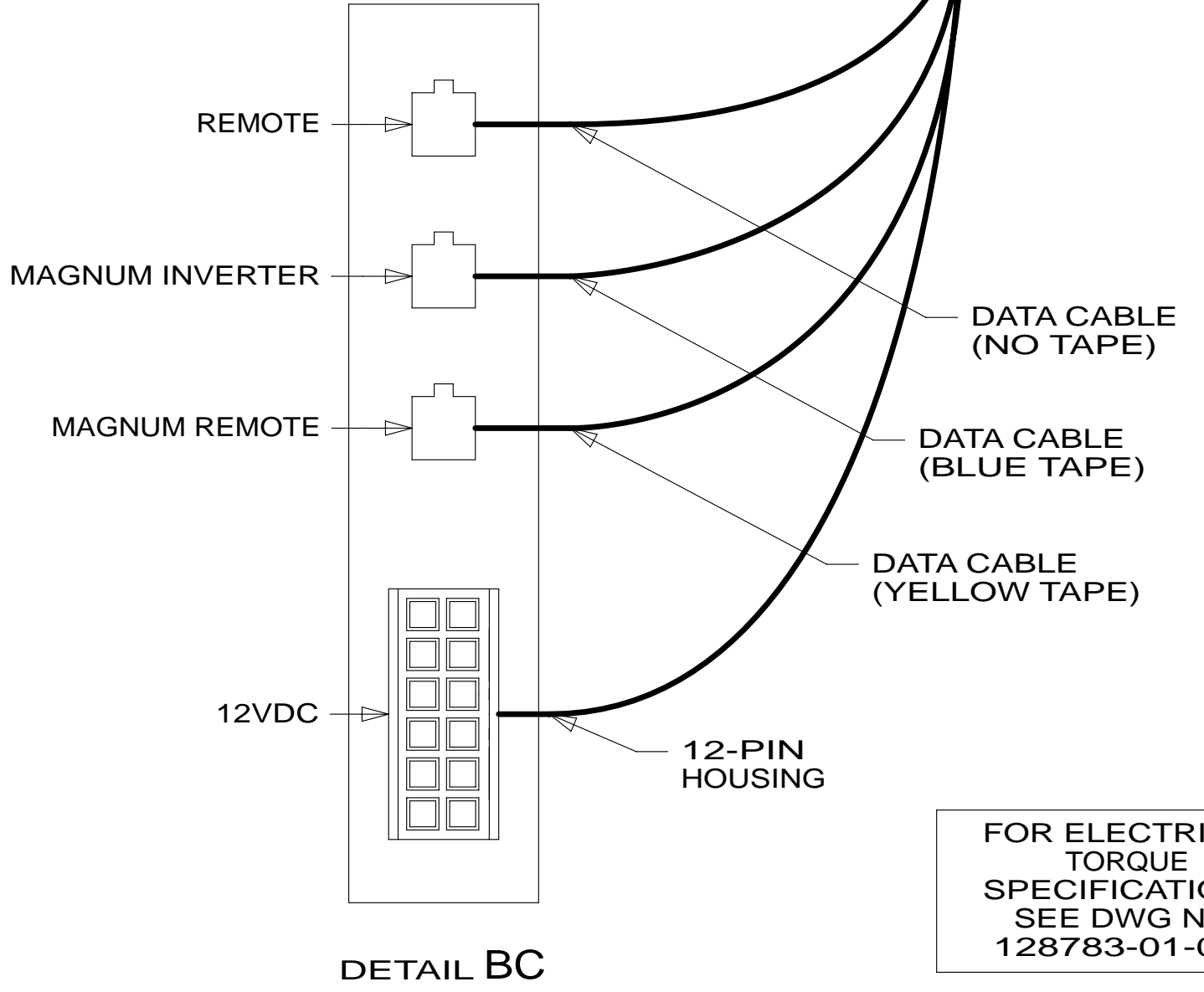
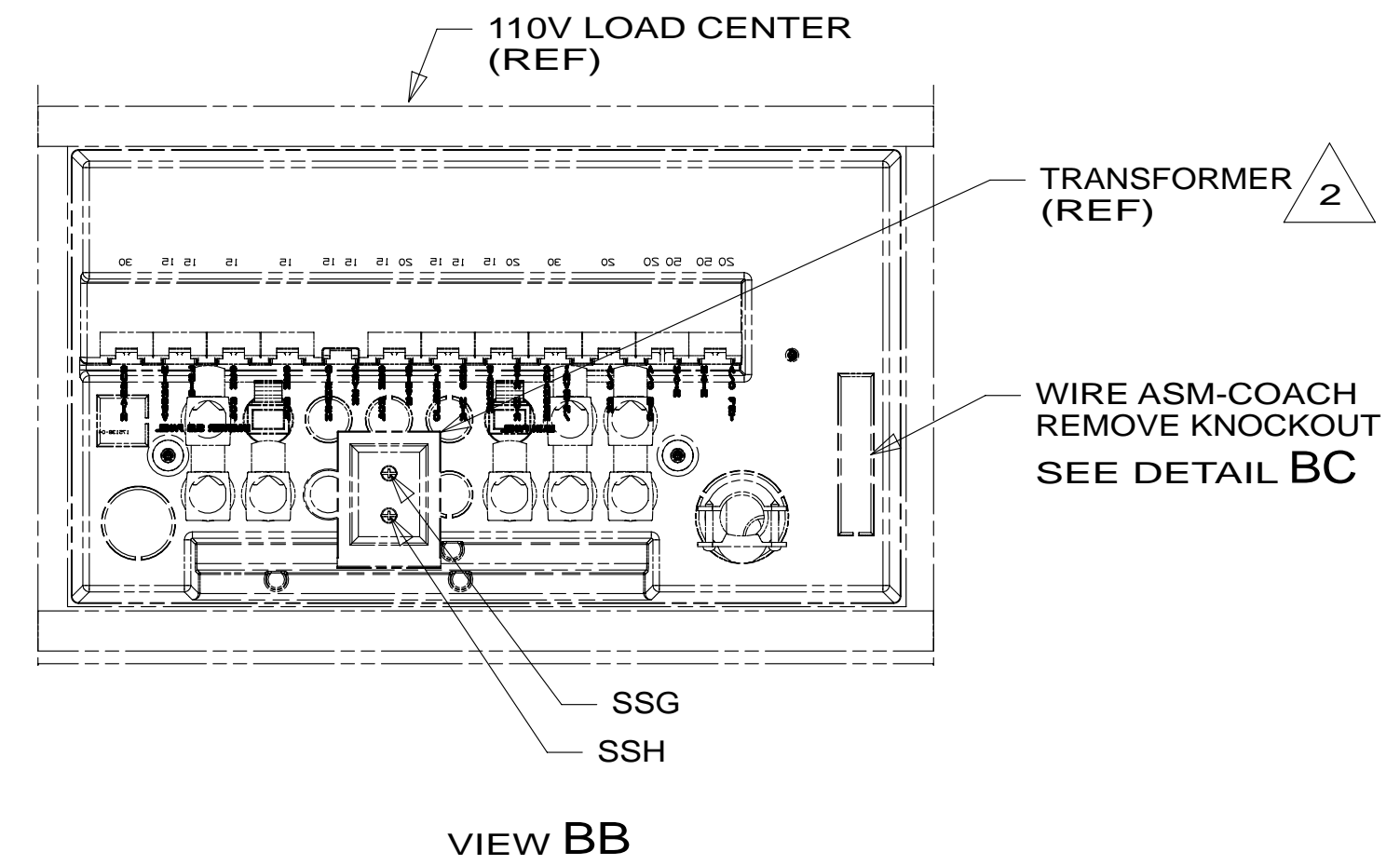
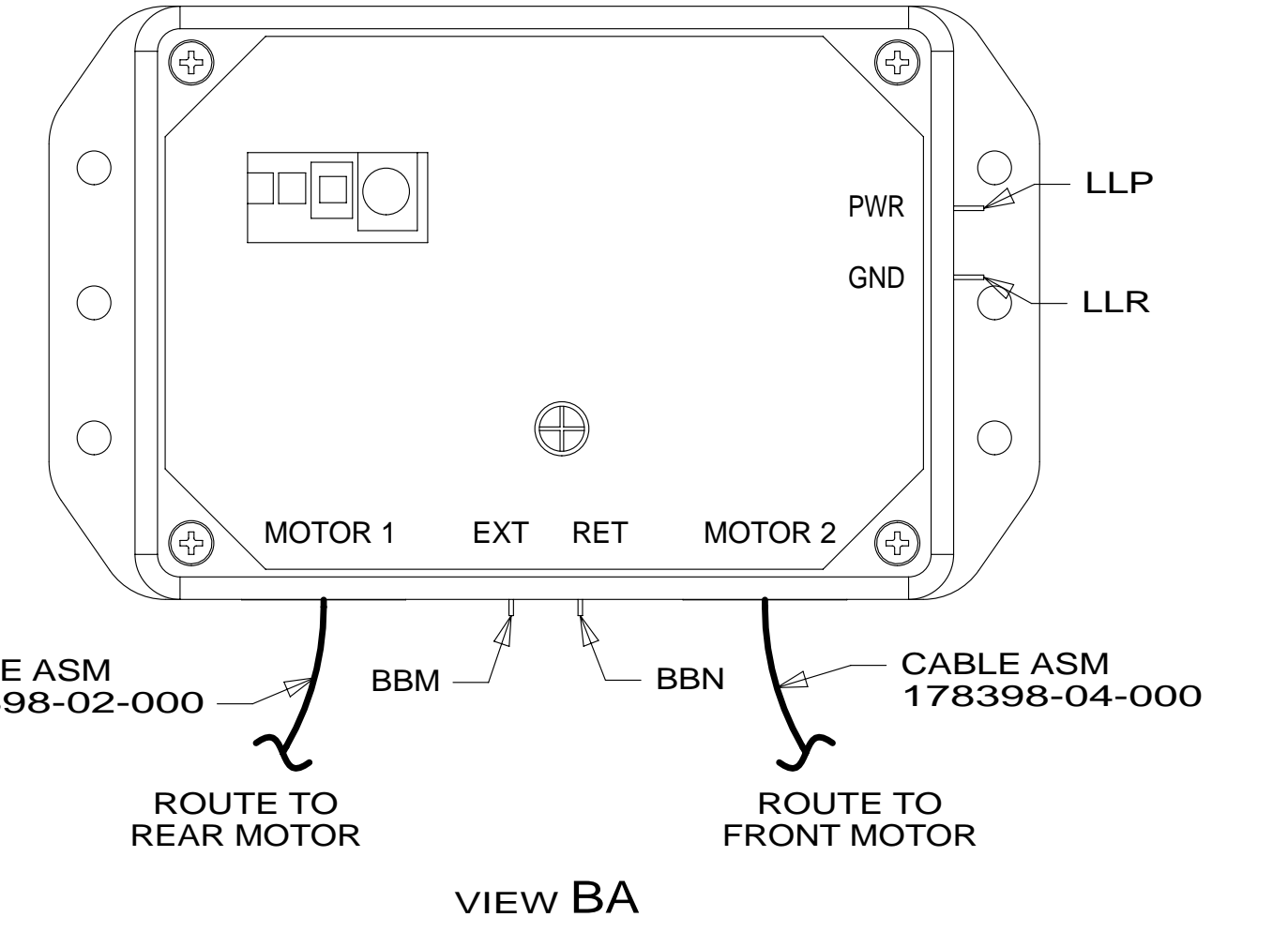
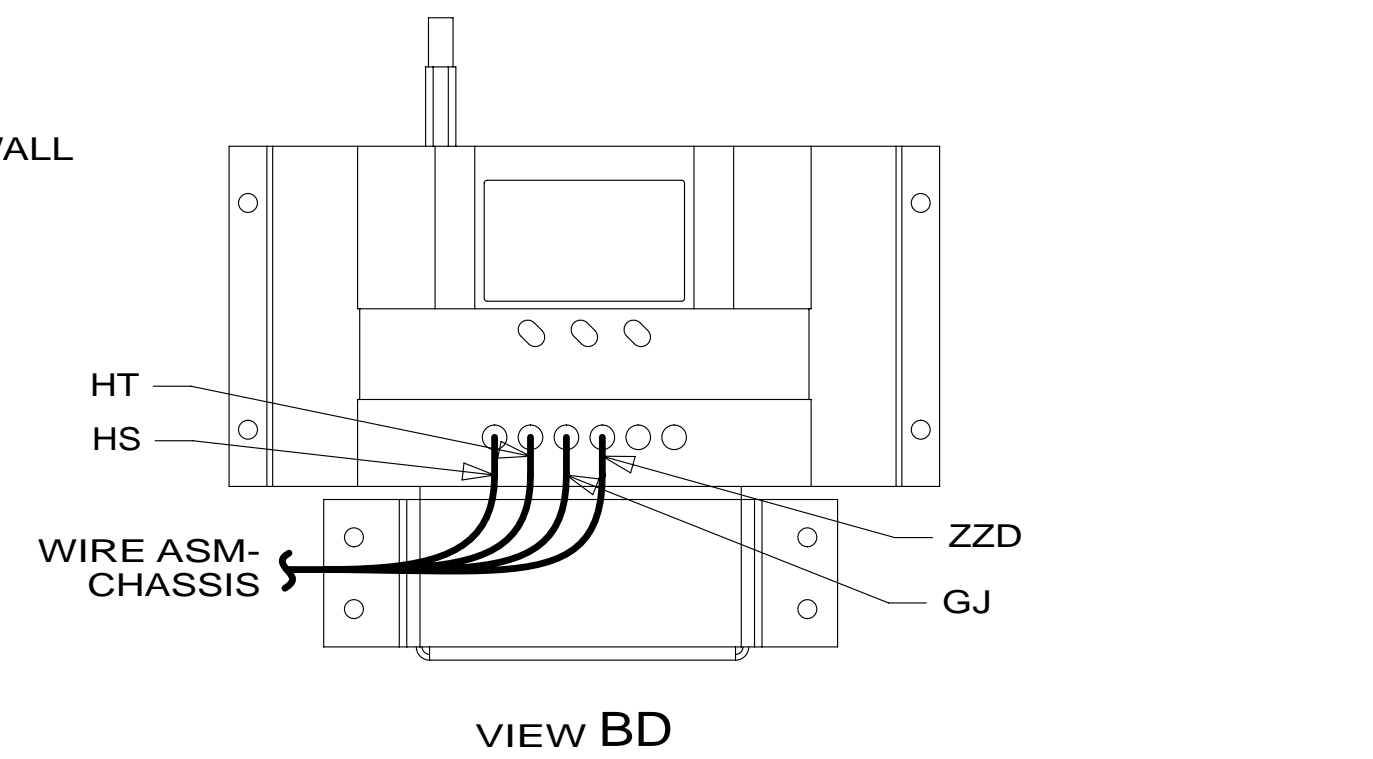
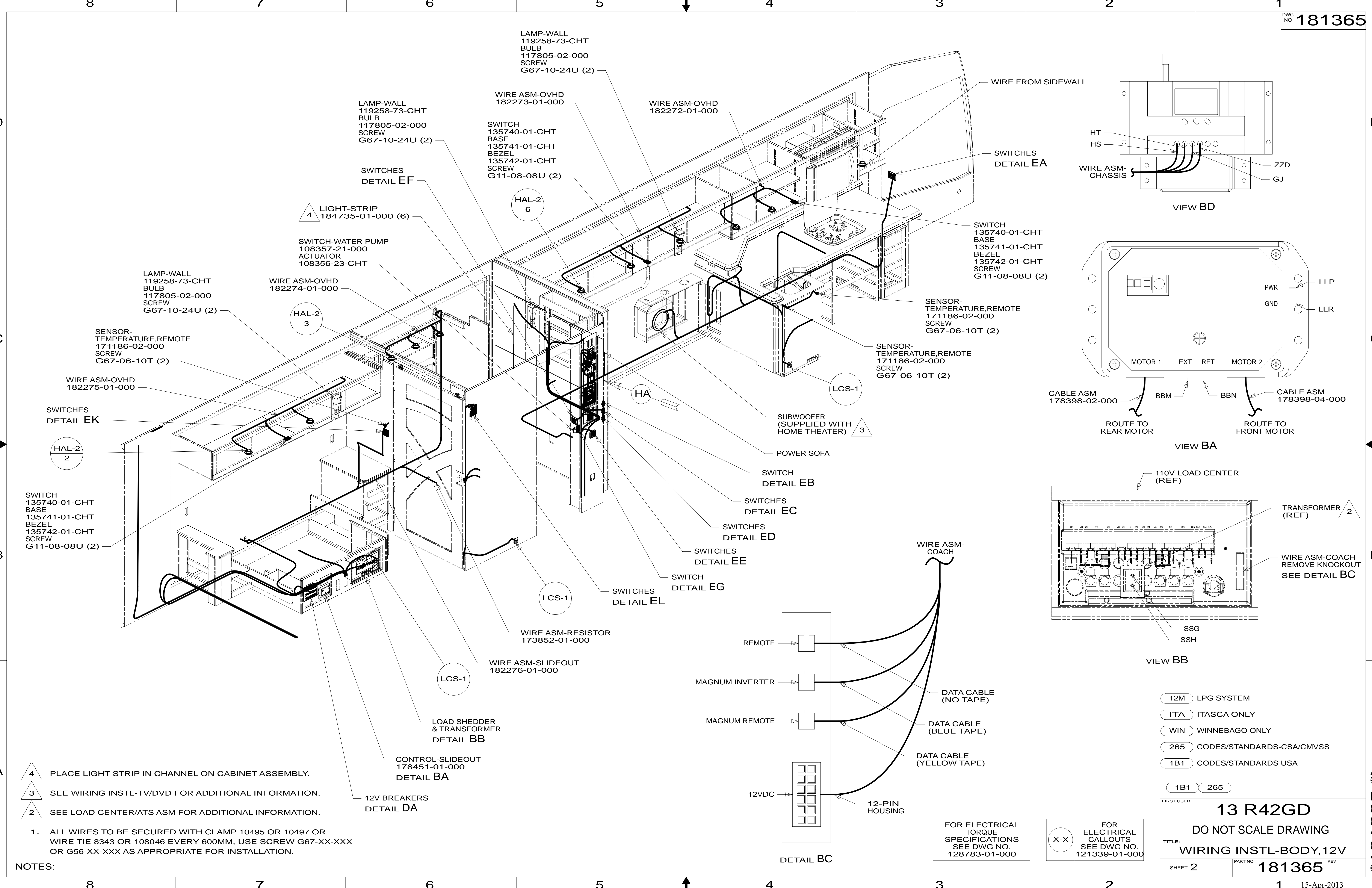
- 282 SOLAR PANEL - 100 WATT
- 11E REFRIGERATOR/FREEZER PORTABL
- ITA ITASCA ONLY
- WIN WINNEBAGO ONLY
- 265 CODES/STANDARDS-CSA/CMVSS
- 1B1 CODES/STANDARDS USA

1B1 265	
COPYRIGHT 2013 WINNEBAGO INDUSTRIES, INC.	
DFT-ORIG	ORIG. DATE
CHKR	ALL DIMENSIONS ARE IN MILLIMETERS
P.E.	FIRST USED
M.E.	13 R42GD
DSNR	UNSPECIFIED TOLERANCES ARE:
	WHOLE DIM (X) : 3
	ONE-PLACE (X.X) : 1.5
	TWO-PLACE (X.XX) : 0.50
	ANGLE : 1°
	THIRD ANGLE PROJECTION
DO NOT SCALE DRAWING	REFER TO ES0018 FOR FASTENER TIGHTENING GUIDELINES
TITLE: WIRING INSTL-BODY, 12V	
SHEET 1 OF 8	PART NO 181365 REV

- 4 SEE WIRING INSTL-BODY, 110V FOR ADDITIONAL INFORMATION.
- 3 ADD CONDUIT TO COVER CAPILLARY TUBE COMPLETELY. CLAMP OR WIRE TIE TO FRAME TUBES.
2. ROUTE TANK SENSOR WIRES SO THEY DO NOT PASS OVER SENSORS. USE WIRE TIE MOUNT 155366-01-000 AND WIRE TIE 8343-01-000 AS NEEDED. TANK SURFACE MUST BE CLEANED USING ISOPROPYL ALCOHOL AND PRIMED WITH PRIMER 94.
1. ALL WIRES TO BE SECURED WITH CLAMP 10495 OR 10497 OR WIRE TIE 8343 OR 108046 EVERY 600MM, USE SCREW G67-XX-XXX OR G56-XX-XXX AS APPROPRIATE FOR INSTALLATION.

FOR ELECTRICAL TORQUE SPECIFICATIONS SEE DWG NO. 128783-01-000

FOR ELECTRICAL CALLOUTS SEE DWG NO. 121339-01-000



- 4 PLACE LIGHT STRIP IN CHANNEL ON CABINET ASSEMBLY.
- 3 SEE WIRING INSTL-TV/DVD FOR ADDITIONAL INFORMATION.
- 2 SEE LOAD CENTER/ATS ASM FOR ADDITIONAL INFORMATION.

1. ALL WIRES TO BE SECURED WITH CLAMP 10495 OR 10497 OR WIRE TIE 8343 OR 108046 EVERY 600MM, USE SCREW G67-XX-XXX OR G56-XX-XXX AS APPROPRIATE FOR INSTALLATION.

NOTES:

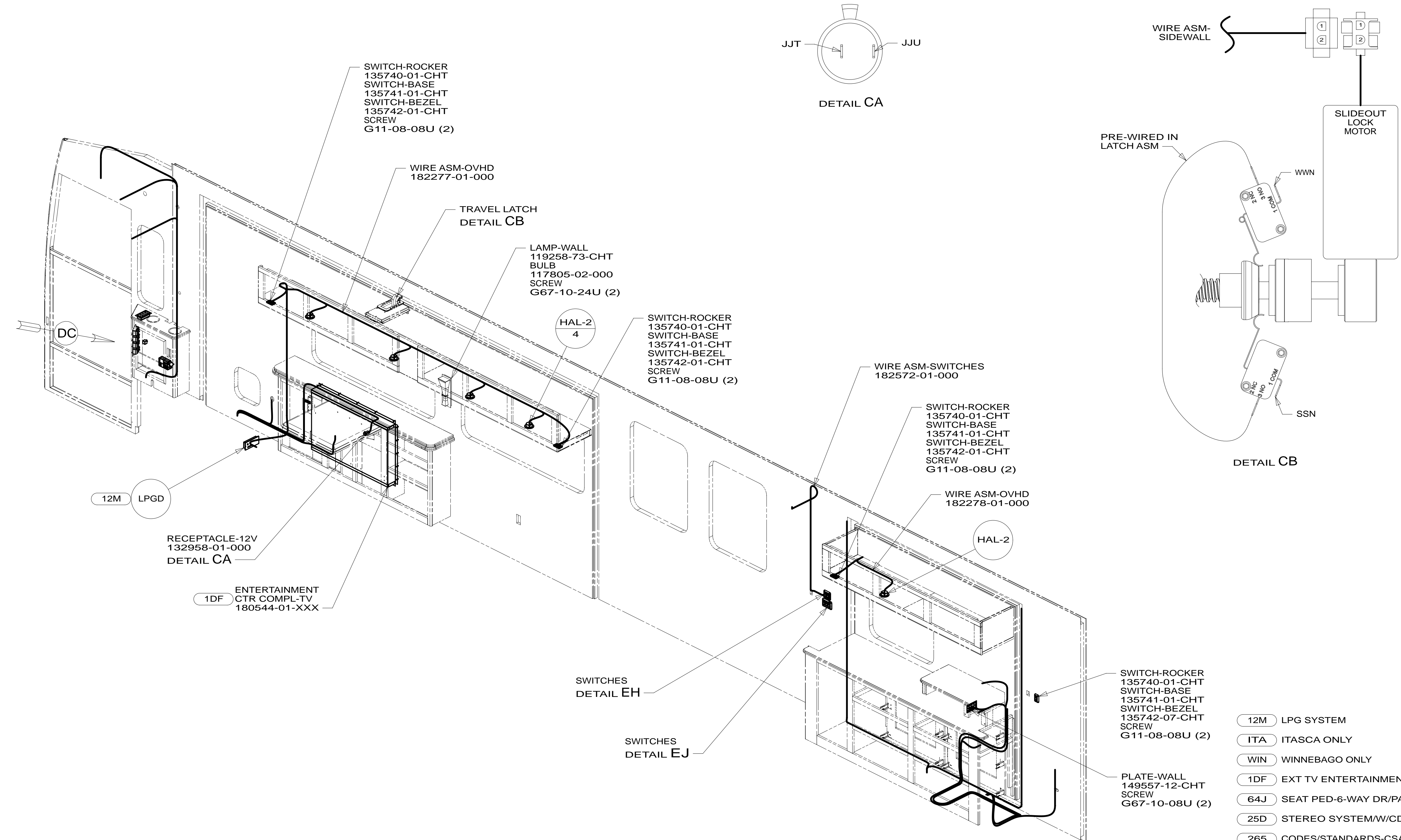
FOR ELECTRICAL TORQUE SPECIFICATIONS SEE DWG NO. 128783-01-000

FOR ELECTRICAL CALLOUTS SEE DWG NO. 121339-01-000

- 12M LPG SYSTEM
- ITA ITASCA ONLY
- WIN WINNEBAGO ONLY
- 265 CODES/STANDARDS-CSA/CMVSS
- 1B1 CODES/STANDARDS USA

FIRST USED	<b>13 R42GD</b>	
DO NOT SCALE DRAWING		
TITLE: <b>WIRING INSTL-BODY,12V</b>		
SHEET 2	PART NO <b>181365</b>	REV

\* 181365 \*



1. ALL WIRES TO BE SECURED WITH CLAMP 10495 OR 10497 OR WIRE TIE 8343 OR 108046 EVERY 600MM, USE SCREW G67-XX-XXX OR G56-XX-XXX AS APPROPRIATE FOR INSTALLATION.

NOTES:

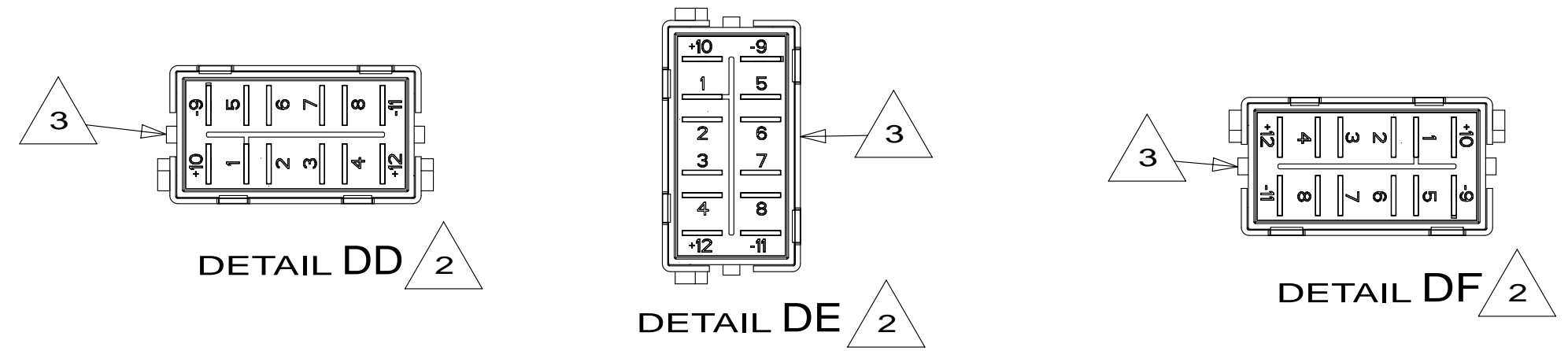
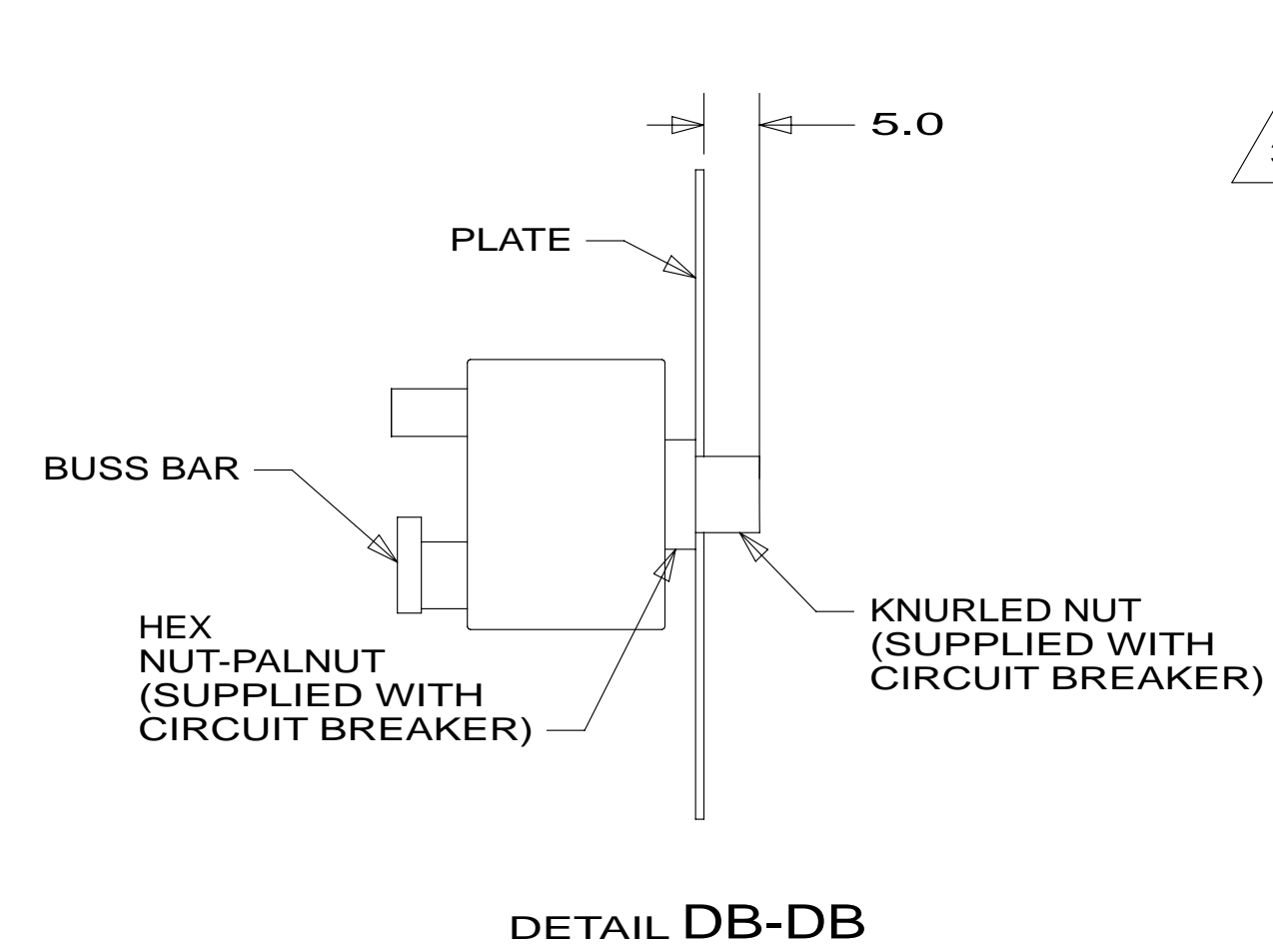
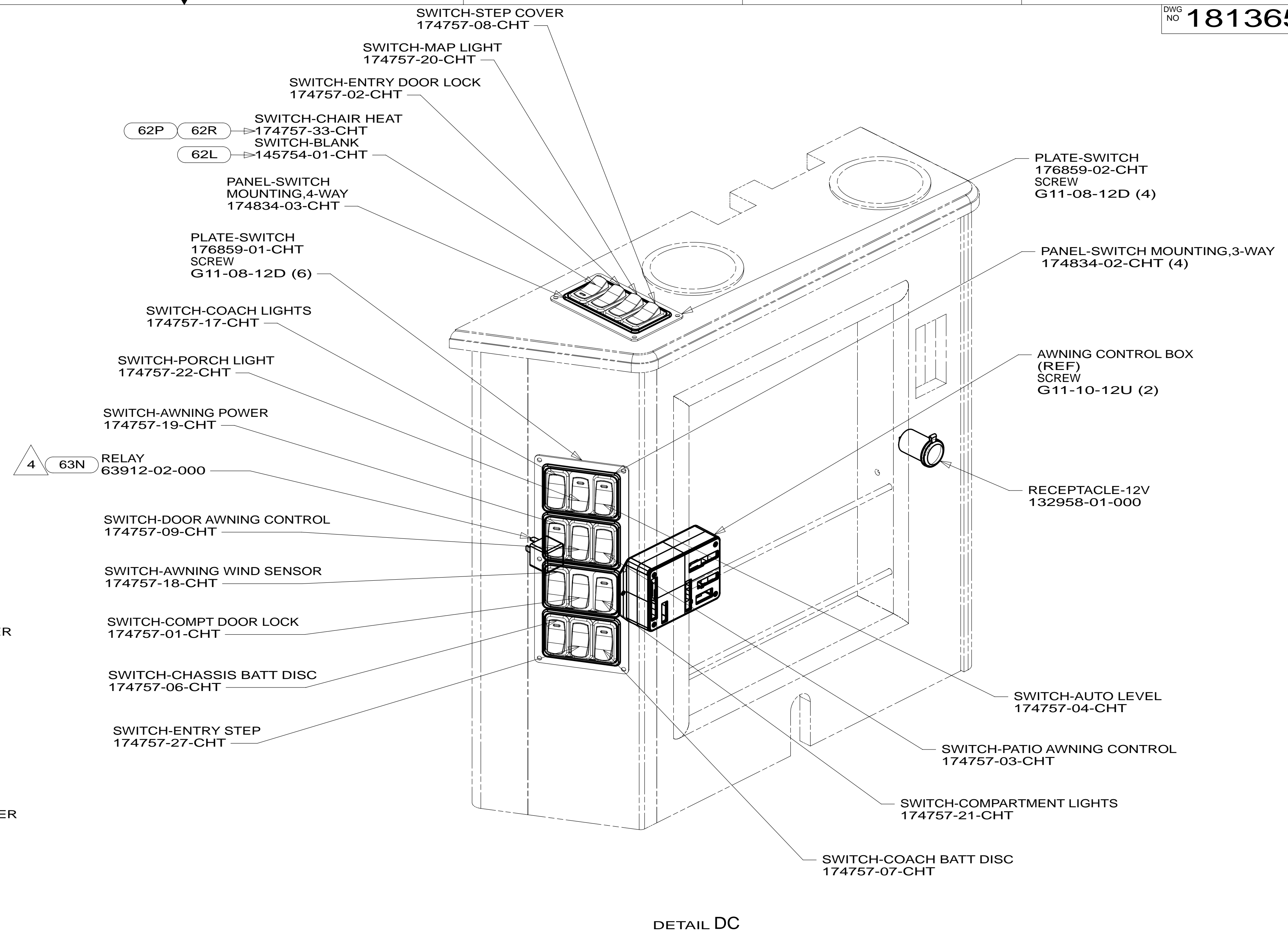
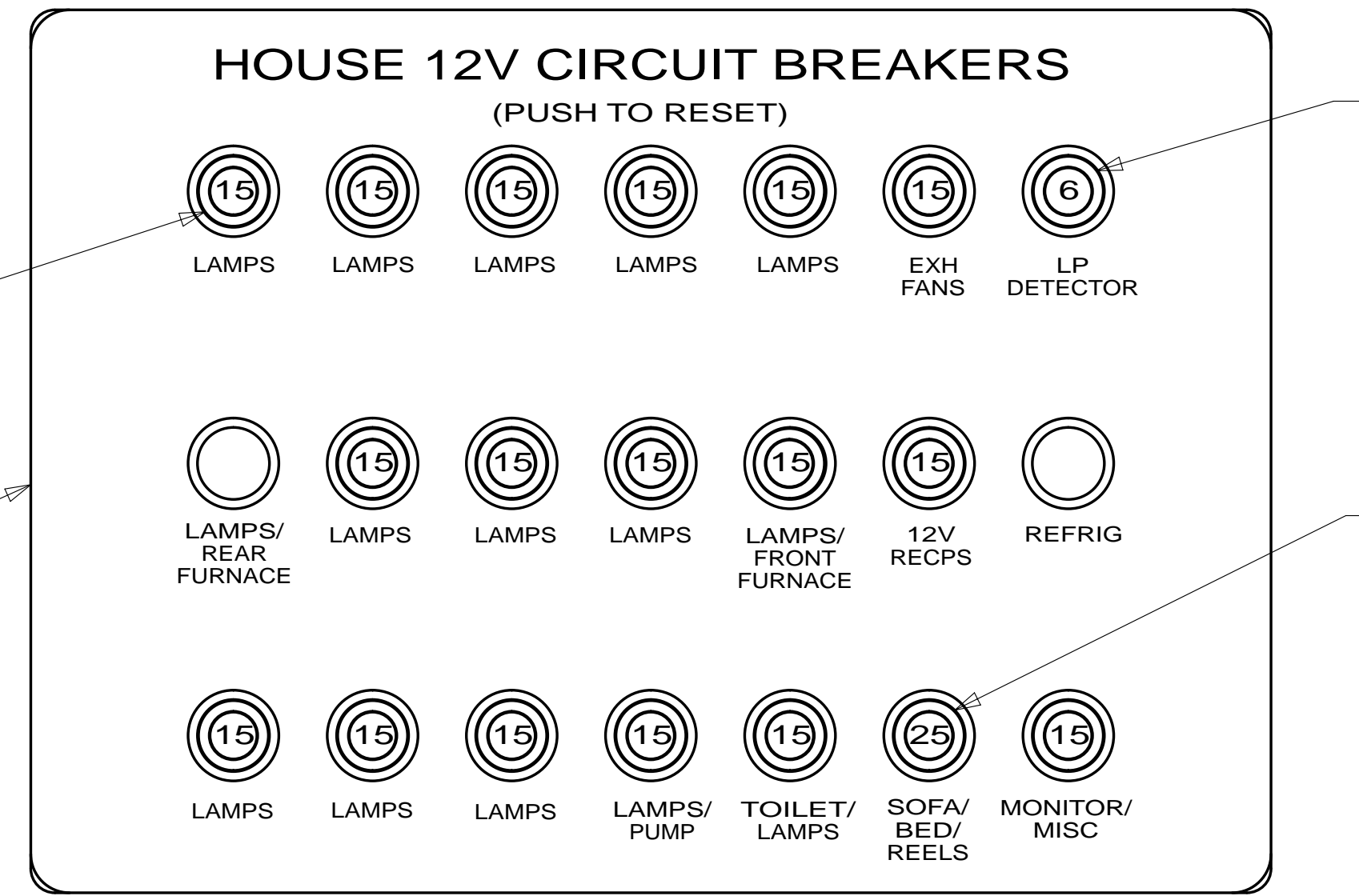
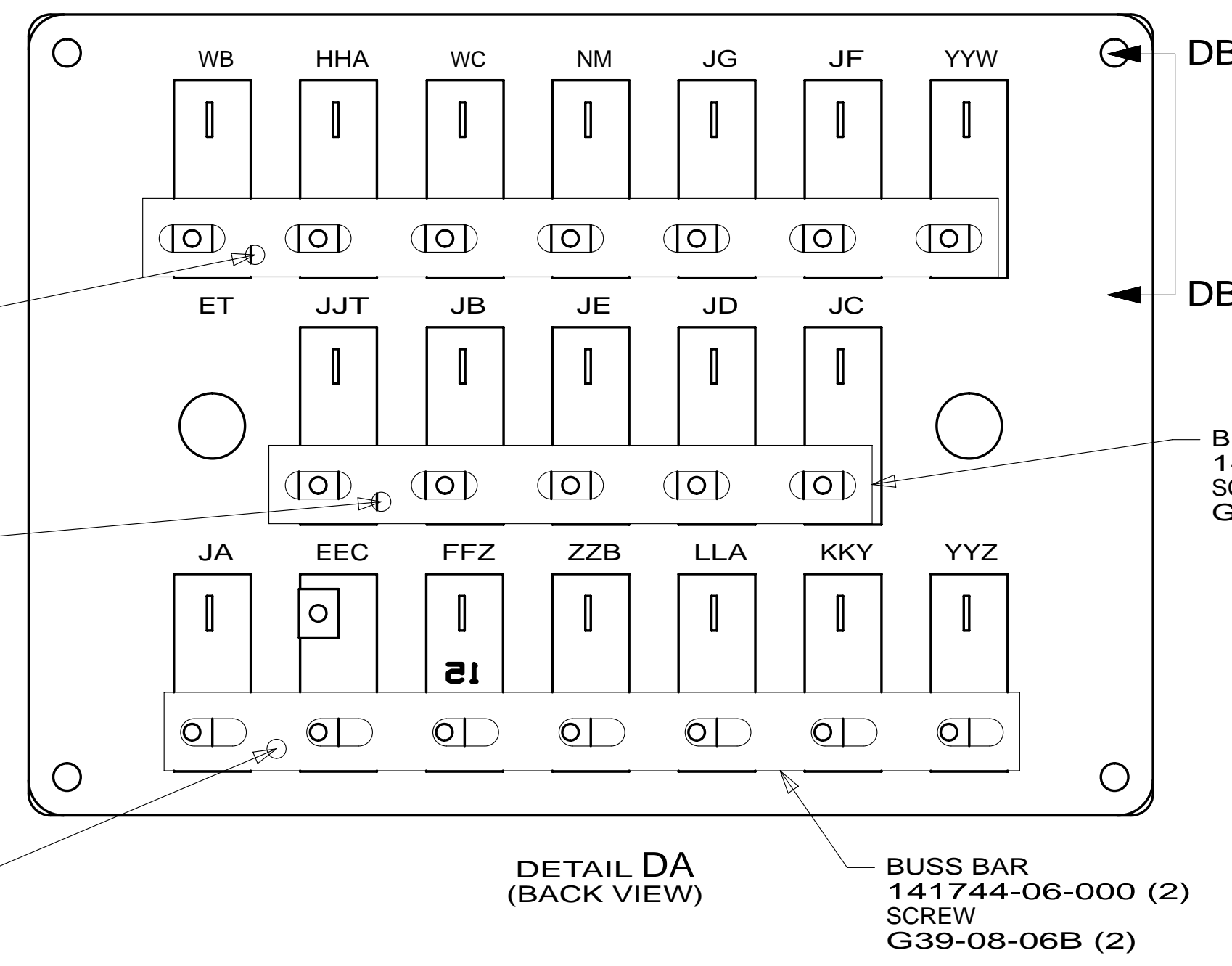
FOR ELECTRICAL TORQUE SPECIFICATIONS SEE DWG NO. 128783-01-000

FOR ELECTRICAL CALLOUTS SEE DWG NO. 121339-01-000

- 12M LPG SYSTEM
- ITA ITASCA ONLY
- WIN WINNEBAGO ONLY
- 1DF EXT TV ENTERTAINMENT CENTER
- 64J SEAT PED-6-WAY DR/PASS POWER
- 25D STEREO SYSTEM/W/CD/DVD REAR
- 265 CODES/STANDARDS-CSA/CMVSS
- 1B1 CODES/STANDARDS USA

FIRST USED	
<b>13 R42GD</b>	
<b>DO NOT SCALE DRAWING</b>	
<b>TITLE: WIRING INSTL-BODY,12V</b>	
SHEET 3	PART NO <b>181365</b> REV

\* 181365 \* A



- 4 SCREW RELAY HOUSING TO SIDEWALL WITH SCREW G11-10-12U.
- 3 WITH SWITCH INSTALLED, THIS SIDE OF SWITCH WILL FACE LEFT SIDEWALL.
- 2 DETAIL IS LOOKING AT SWITCH FROM THE BACKSIDE OF SWITCH WHEN IT IS INSTALLED.

NOTES:  
1. ALL WIRES TO BE SECURED WITH CLAMP 10495 OR 10497 OR WIRE TIE 8343 OR 108046 EVERY 600MM, USE SCREW G67-XX-XXX OR G56-XX-XXX AS APPROPRIATE FOR INSTALLATION.

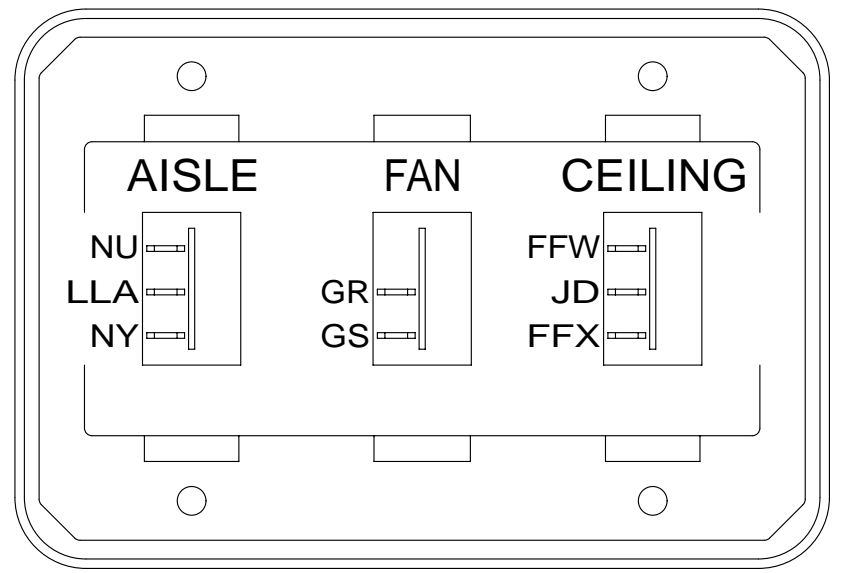
FOR ELECTRICAL TORQUE SPECIFICATIONS SEE DWG NO. 128783-01-000

X-X FOR ELECTRICAL CALLOUTS SEE DWG NO. 121339-01-000

- 62R SEATS-W/QUEEN PASS.- HEATED
- 62P SEATS-DR/PASS UL/HEAT/TABLET
- 62L SEATS-LUXURY CAB
- 63N AWNING-ENTRY, ELECTRIC
- 265 CODES/STANDARDS-CSA/CMVSS
- 1B1 CODES/STANDARDS USA

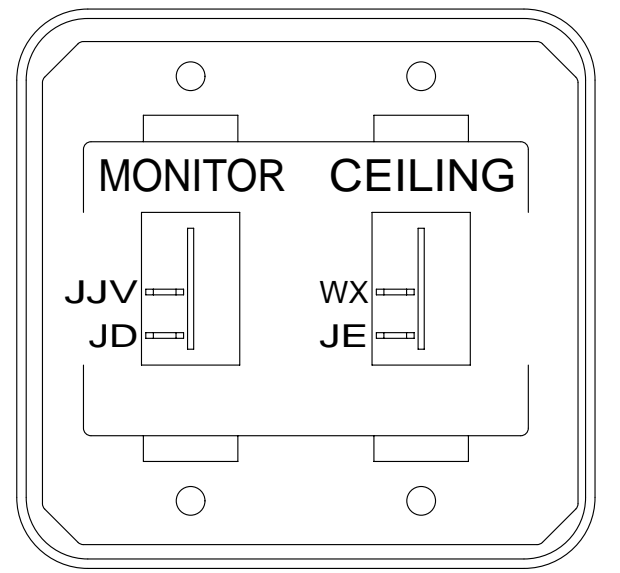
FIRST USED	
<b>13 R42GD</b>	
<b>DO NOT SCALE DRAWING</b>	
<b>WIRING INSTL-BODY, 12V</b>	
SHEET 4	PART NO <b>181365</b> REV
15-Apr-2013	

\* 181365 \*



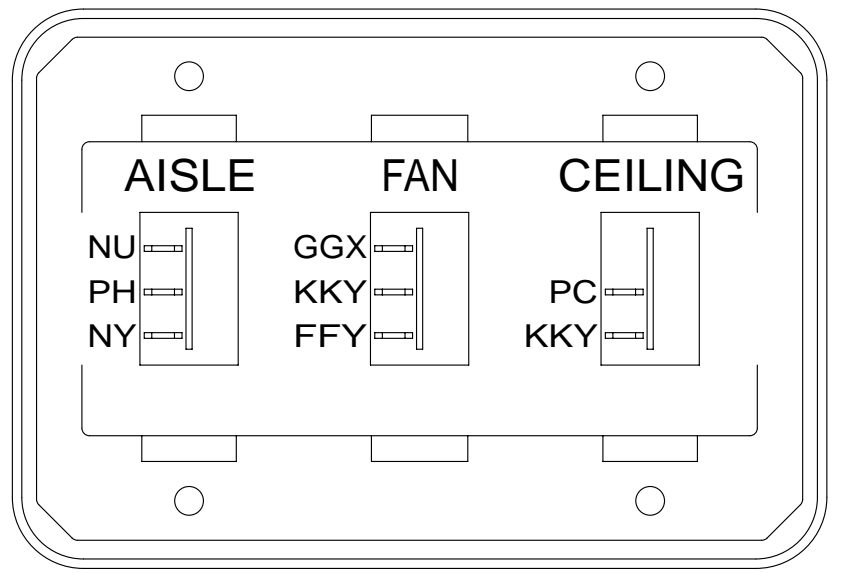
SWITCH-ROCKER  
135740-01-CHT  
135740-02-CHT (2)  
SWITCH-BASE  
135741-03-CHT  
SWITCH-BEZEL  
135742-23-CHT  
SCREW  
G11-08-08U (4)

DETAIL EA

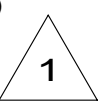


SWITCH-ROCKER  
135740-01-CHT (2)  
SWITCH-BASE  
135741-02-CHT  
SWITCH-BEZEL  
135742-31-CHT  
SCREW  
G11-08-08U (4)

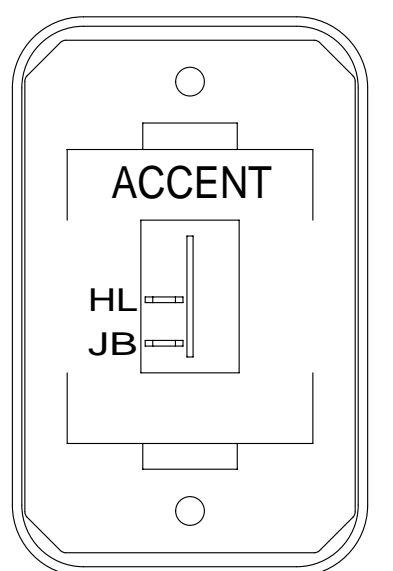
DETAIL EE



SWITCH-ROCKER  
135740-01-CHT  
135740-02-CHT  
135740-04-CHT  
SWITCH-BASE  
135741-03-CHT  
SWITCH-BEZEL  
135742-23-CHT  
SCREW  
G11-08-08U (4)  
RESISTER-FAN  
140195-01-000

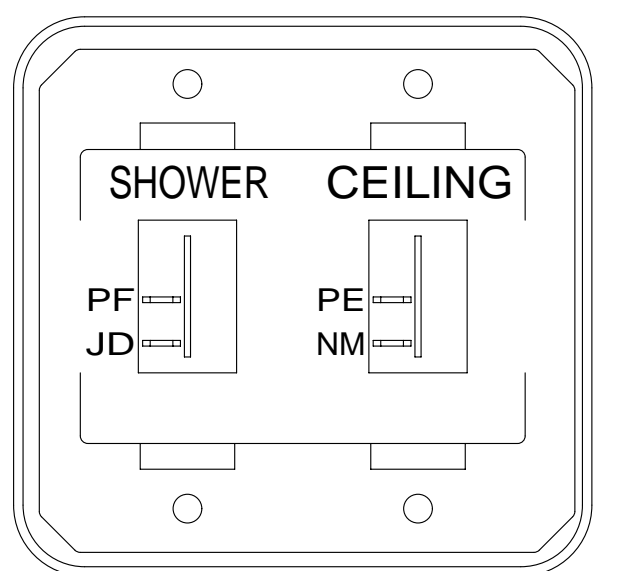


DETAIL EJ



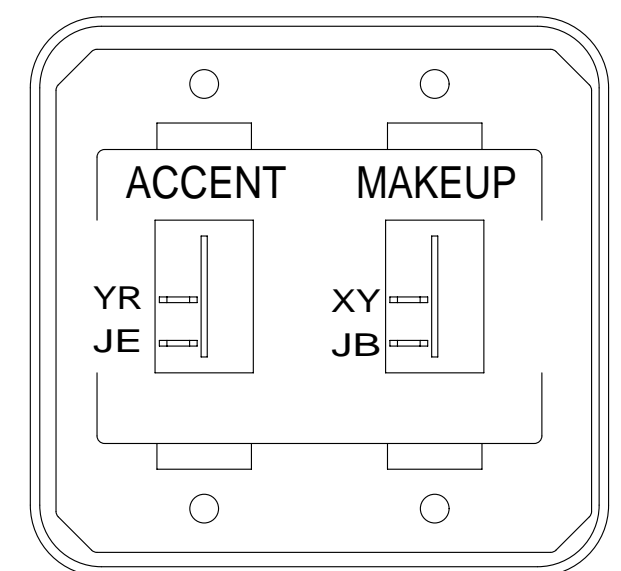
SWITCH-ROCKER  
135740-01-CHT  
SWITCH-BASE  
135741-01-CHT  
SWITCH-BEZEL  
135742-50-CHT  
SCREW  
G11-08-08U (2)

DETAIL EB



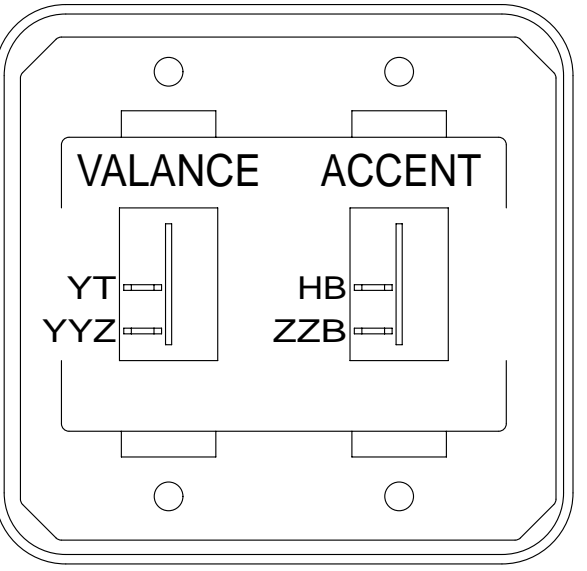
SWITCH-ROCKER  
135740-01-CHT (2)  
SWITCH-BASE  
135741-02-CHT  
SWITCH-BEZEL  
135742-15-CHT  
SCREW  
G11-08-08U (4)

DETAIL EF



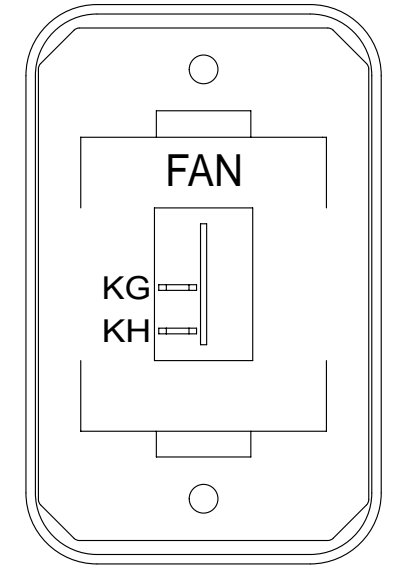
SWITCH-ROCKER  
135740-01-CHT (2)  
SWITCH-BASE  
135741-02-CHT  
SWITCH-BEZEL  
135742-46-CHT  
SCREW  
G11-08-08U (4)

DETAIL EK



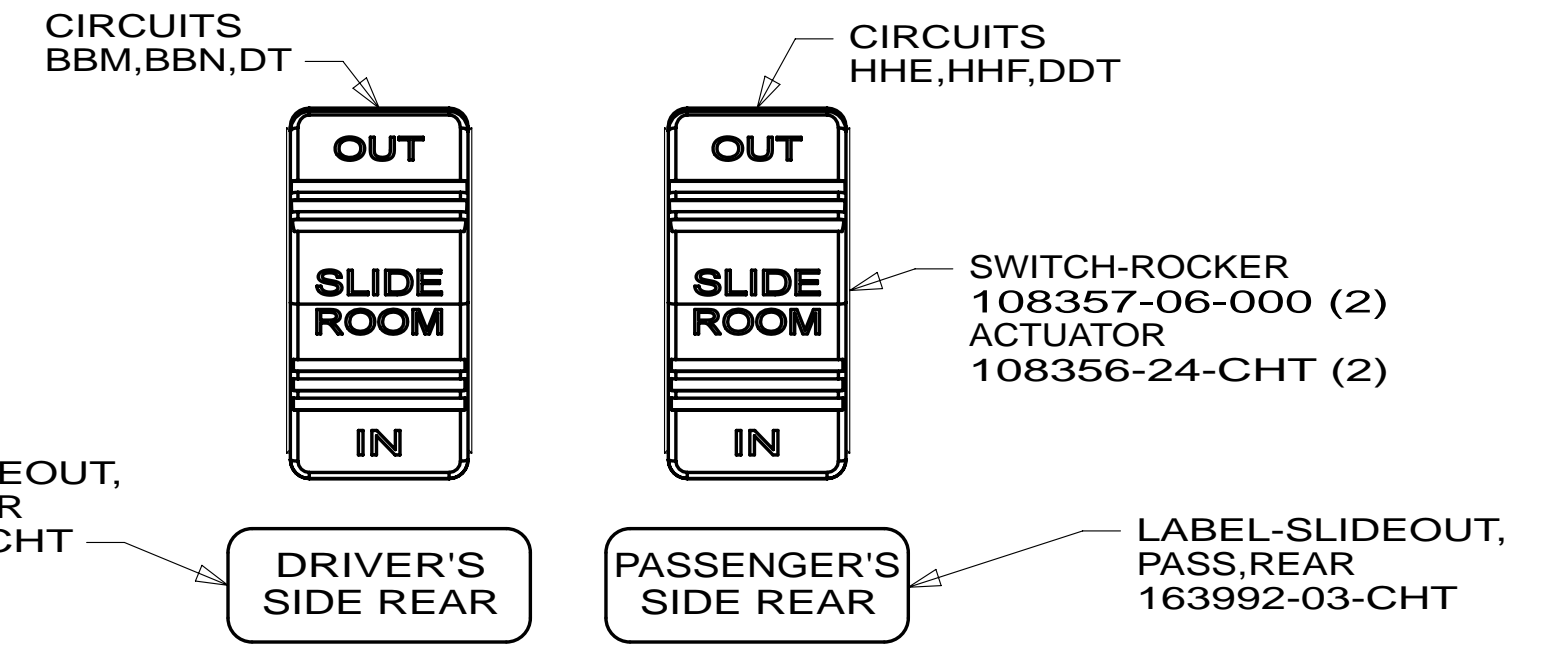
SWITCH-ROCKER  
135740-01-CHT (2)  
SWITCH-BASE  
135741-02-CHT  
SWITCH-BEZEL  
135742-36-CHT  
SCREW  
G11-08-08U (4)

DETAIL EC



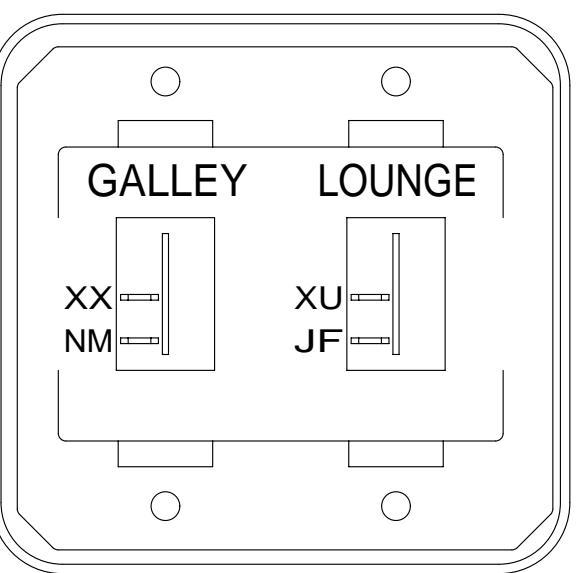
SWITCH-ROCKER  
135740-01-CHT  
SWITCH-BASE  
135741-01-CHT  
SWITCH-BEZEL  
135742-12-CHT  
SCREW  
G11-08-08U (2)

DETAIL EG



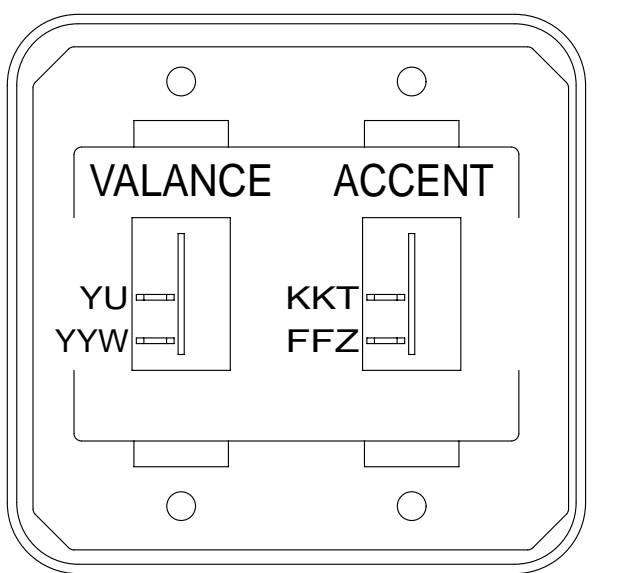
**WARNING**  
CRUSH HAZARD. Keep people and objects clear of the inside and outside of the slideout room when operating. Failure to comply could result in death or serious injury.

DETAIL EL



SWITCH-ROCKER  
135740-01-CHT (2)  
SWITCH-BASE  
135741-02-CHT  
SWITCH-BEZEL  
135742-18-CHT  
SCREW  
G11-08-08U (4)

DETAIL ED



SWITCH-ROCKER  
135740-01-CHT (2)  
SWITCH-BASE  
135741-02-CHT  
SWITCH-BEZEL  
135742-36-CHT  
SCREW  
G11-08-08U (4)

DETAIL EH

1 CONNECT WIRE ASM-RESISTOR,FAN TO 2-PIN HOUSING LOCATED BY THE SWITCH WIRES.

NOTES:

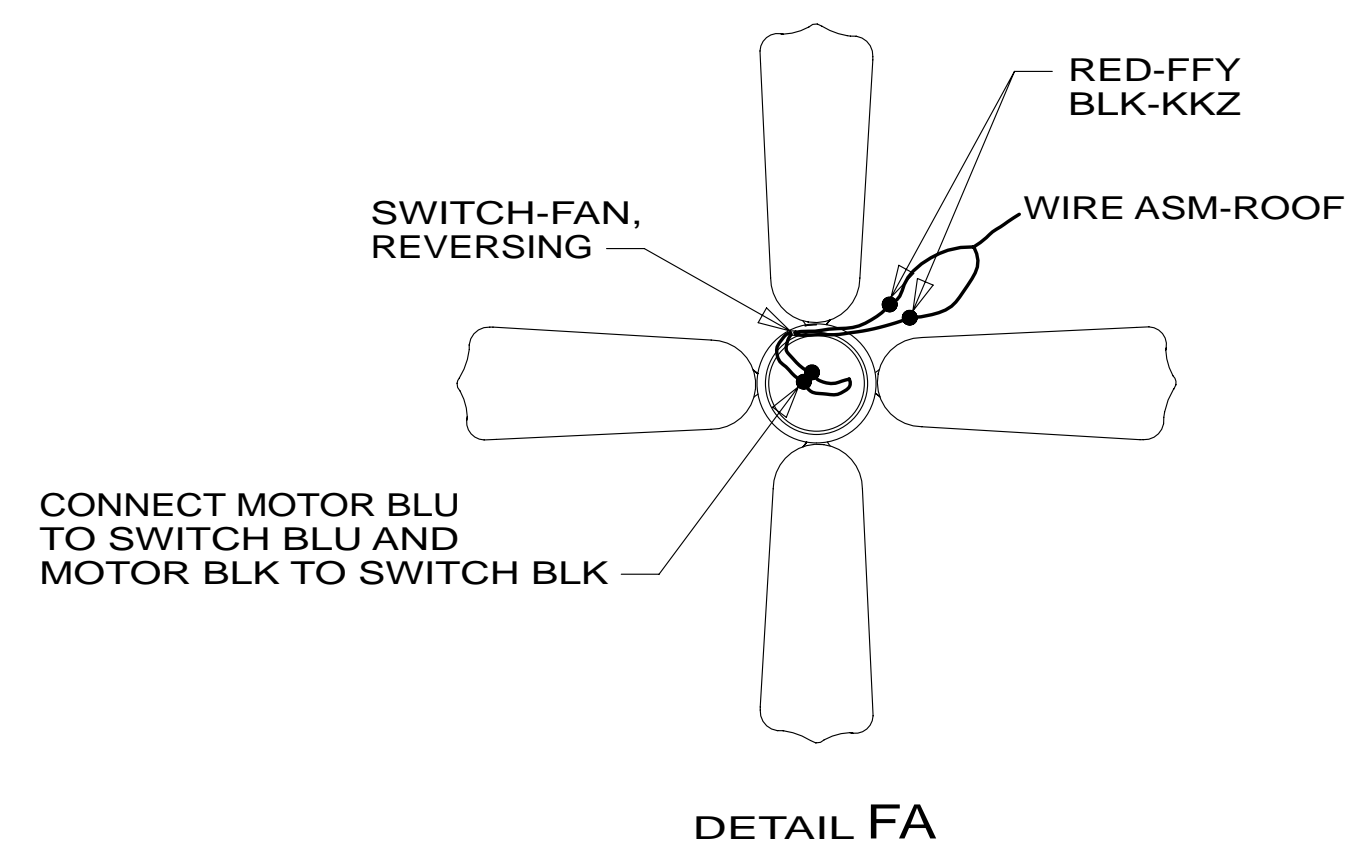
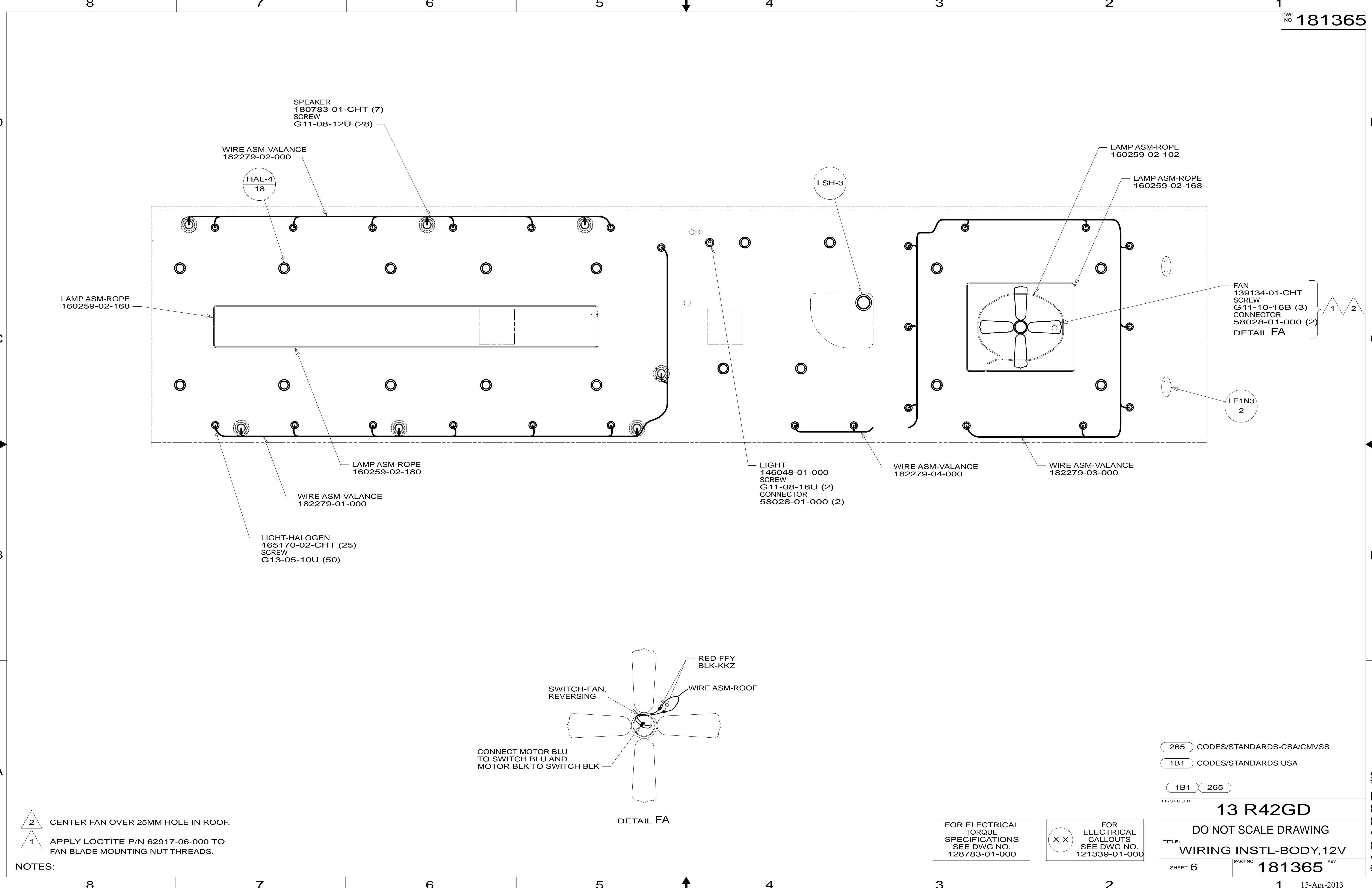
FOR ELECTRICAL TORQUE SPECIFICATIONS SEE DWG NO. 128783-01-000

X-X FOR ELECTRICAL CALLOUTS SEE DWG NO. 121339-01-000

265 CODES/STANDARDS-CSA/CMVSS  
1B1 CODES/STANDARDS USA  
1B1 265

FIRST USED  
**13 R42GD**  
DO NOT SCALE DRAWING  
TITLE: **WIRING INSTL-BODY,12V**  
SHEET 5 PART NO. **181365** REV

\* 181365 \* A



NOTES:

2 CENTER FAN OVER 25MM HOLE IN ROOF.

1 APPLY LOCTITE P/N 62917-06-000 TO FAN BLADE MOUNTING NUT THREADS.

FOR ELECTRICAL TORQUE SPECIFICATIONS SEE DWG NO. 128783-01-000

FOR ELECTRICAL CALLOUTS SEE DWG NO. 121339-01-000

265 CODES/STANDARDS-CSA/CMVSS

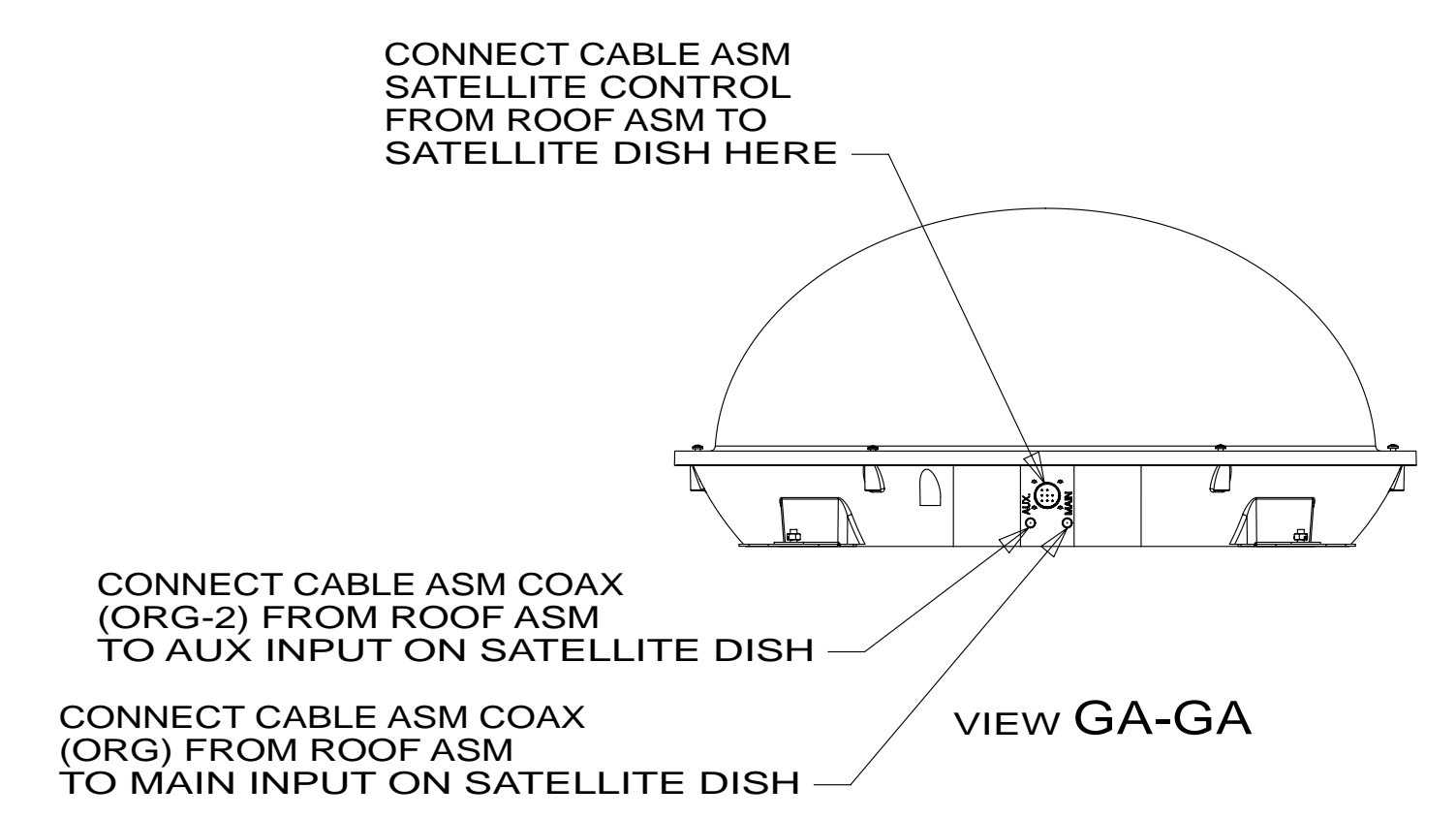
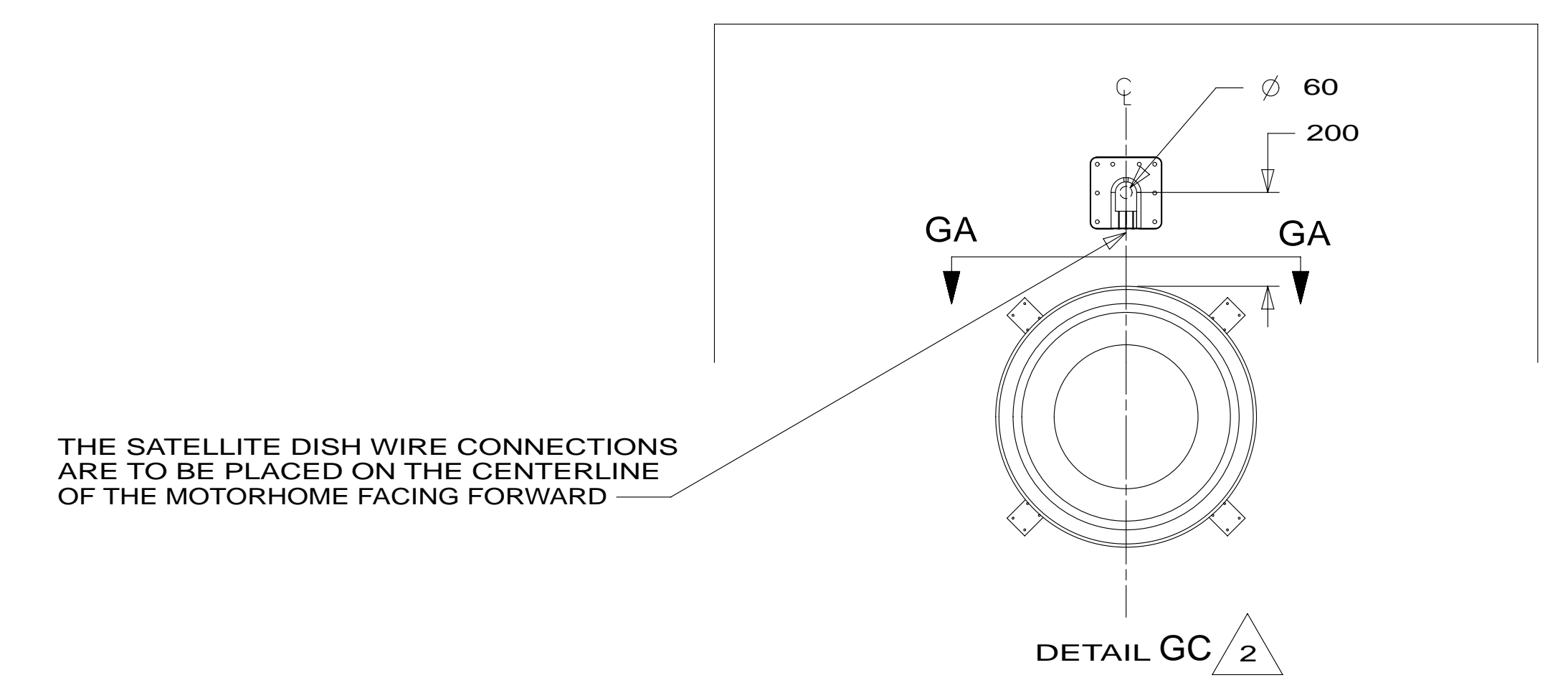
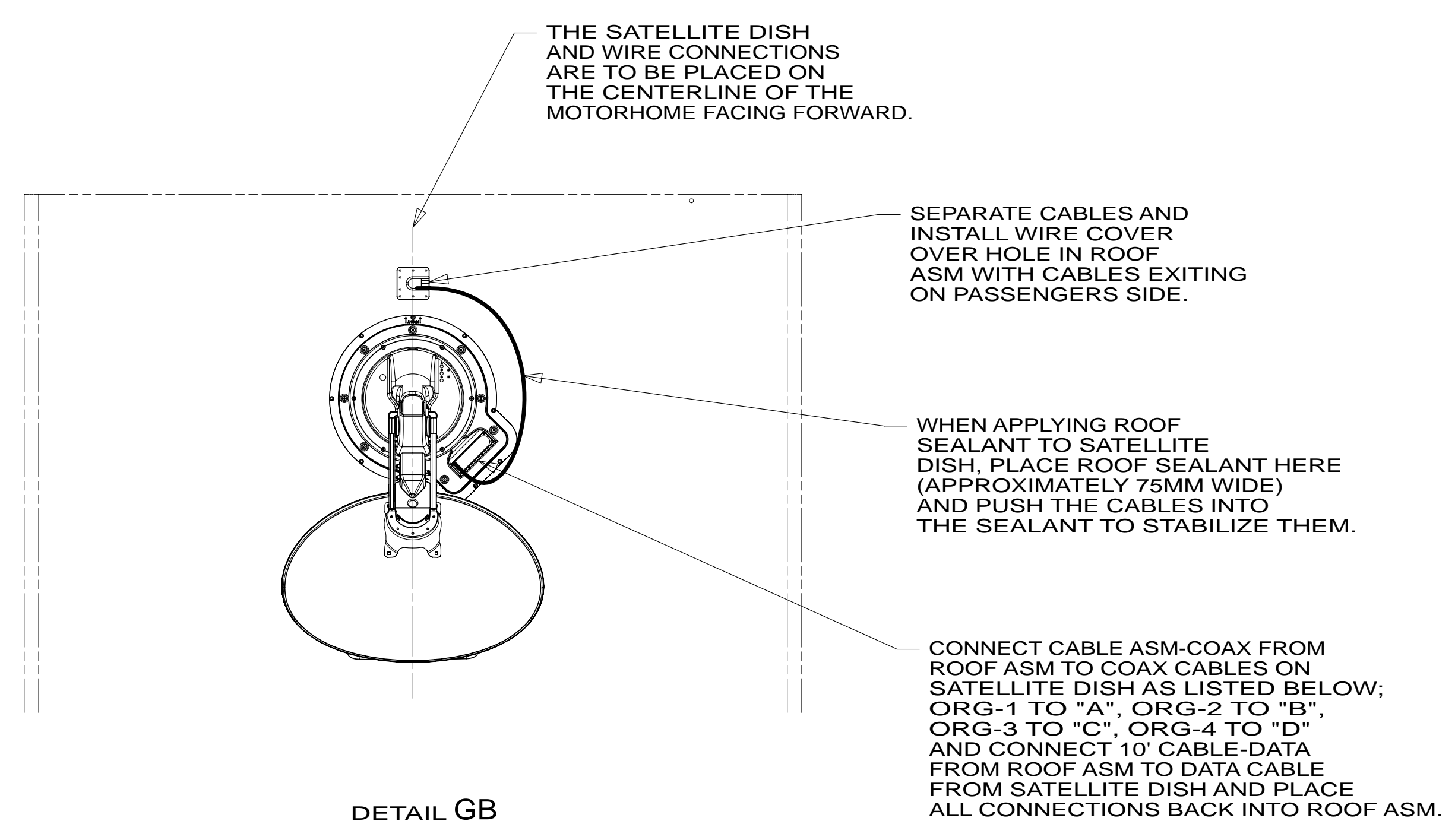
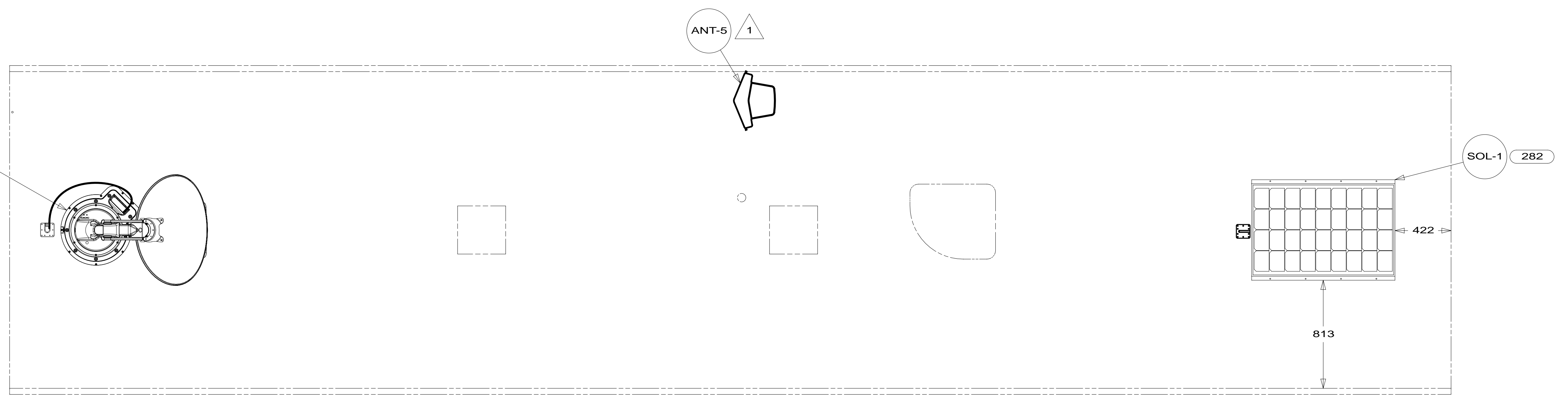
1B1 CODES/STANDARDS USA

1B1 265

FIRST USED	<b>13 R42GD</b>	
TITLE:	<b>DO NOT SCALE DRAWING</b>	
	<b>WIRING INSTL-BODY, 12V</b>	
SHEET 6	PART NO <b>181365</b>	REV

\* 181365 \* A

- 1 48P DI-2  
DETAIL GC
- 1 78K DA-2  
DETAIL GC
- 1 783 DA-3  
DETAIL GB



- 783 SATELLITE HD TV SYSTEM AUTOC
- 282 SOLAR PANEL - 100 WATT
- 78K SATELLITE DISH-AUTOMATIC
- 1D3 ENTERTAIN CENTR/EXT TV-DVD
- 48P SAT TV SYSTEM IN-MOTION
- 25D STEREO SYSTEM/W/CD/DVD REAR
- 265 CODES/STANDARDS-CSA/CMVSS
- 1B1 CODES/STANDARDS USA

- NOTES:
- 3 SEAL
  - 2 REMOVE ALL SHIPPING RESTRAINTS AND FIRMLY INSERT THE SUPPLIED PLUGS INTO THE APPROPRIATE SIZED HOLES AS SPECIFIED IN THE INSTALLATION PROCESS.
  - 1 SEE MANUFACTURER'S INSTALLATION FOR ADDITIONAL INFORMATION.

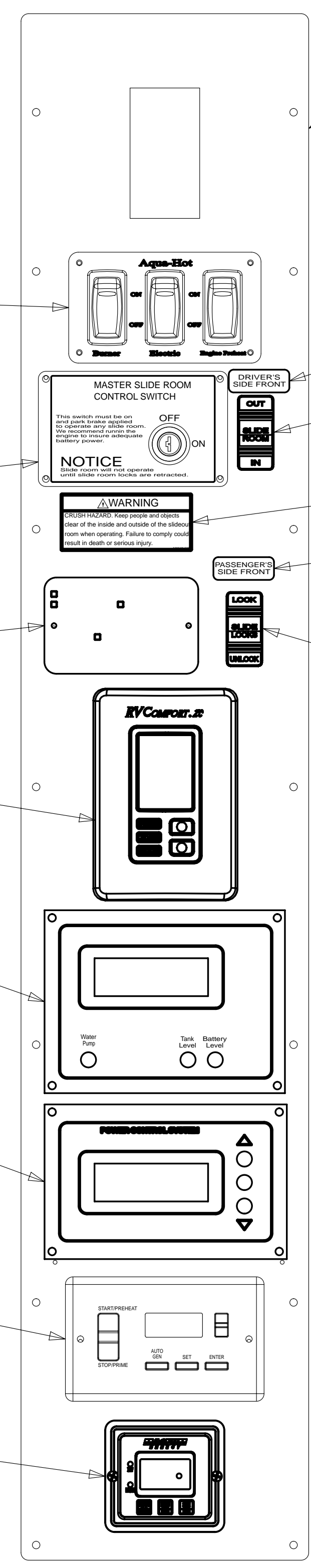
FOR ELECTRICAL TORQUE SPECIFICATIONS SEE DWG NO. 128783-01-000

FOR ELECTRICAL CALLOUTS SEE DWG NO. 121339-01-000

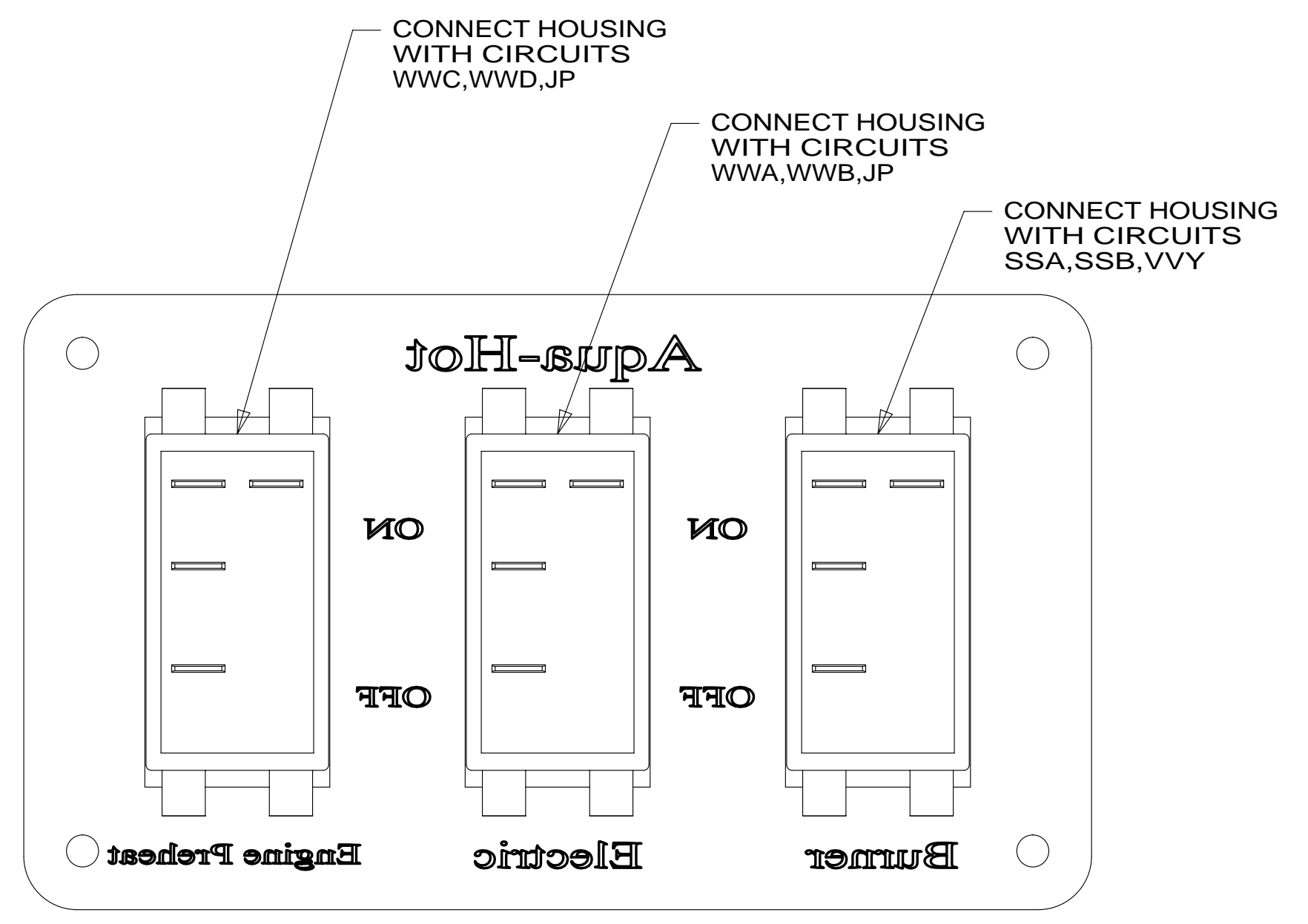
FIRST USED	
<b>13 R42GD</b>	
DO NOT SCALE DRAWING	
TITLE: <b>WIRING INSTL-BODY,12V</b>	
SHEET 7	PART NO <b>181365</b> REV
15-Apr-2013	

\* 181365 \* A





- PLATE-SWITCH  
181605-01-CHT  
SCREW  
G67-10-12U (14)
- SWITCH-ASM  
169741-13-CHT  
DETAIL HB
- PLATE-KEY,SLIDE ROOM  
163987-01-CHT  
LABEL-SLIDEROOM CONTROL,ELEC  
163988-02-CHT  
SWITCH-KEY,SPST-ILLINOIS LCK  
163097-01-000  
SCREW  
G11-08-08U (4)
- TOUCH PANEL-SLIDEOUT  
171341-01-000  
SCREW  
G11-08-08U (2)
- THERMOSTAT-A/C FURNACE  
RELAY  
171186-04-CHT  
63912-02-000 (4)
- PANEL-MONITOR  
175724-03-000  
SCREW  
G11-08-08U (4)
- PANEL-MONITOR  
174384-01-000  
SCREW  
G11-08-08U (4)
- 1 AUTO GEN START  
158425-01-000
- 2 REMOTE PANEL  
175385-02-000
- MASTER SLIDE ROOM  
CONTROL SWITCH
- DRIVERS  
SIDE FRONT
- LABEL-SLIDEOUT,DRIVER,FRONT  
163992-01-CHT
- SWITCH-ROCKER  
108357-06-000  
ACTUATOR-SWITCH  
108356-24-CHT
- LABEL  
116549-02-000
- LABEL-SLIDEOUT,PASS,FRONT  
163992-04-CHT
- PASSENGER'S  
SIDE FRONT
- SWITCH-SLIDEOUT  
108357-06-000  
ACTUATOR  
108356-25-CHT



- CONNECT HOUSING  
WITH CIRCUITS  
WWC,WWD,JP
- CONNECT HOUSING  
WITH CIRCUITS  
WWA,WWB,JP
- CONNECT HOUSING  
WITH CIRCUITS  
SSA,SSB,VVY

DETAIL HB

DETAIL HA

- 2 SET 'BAT TYPE' TO 'AGM2'  
SET 'LBCO' TO '11VDC'  
SEE OWNER'S MANUAL FOR SETUP PROCEDURE
- 1 SET 'GEN TYPE' TO MATCH GENERATOR MODEL INSTALLED IN COACH.  
SET 'SAFETY TYPE' TO 'IGNITION'.  
SEE OWNER'S MANUAL FOR SETUP PROCEDURE.

NOTES:

- 32W GENERATOR-START,AUTO SYSTEM
- 265 CODES/STANDARDS-CSA/CMVSS
- 1B1 CODES/STANDARDS USA

1B1 265

FIRST USED	<b>13 R42GD</b>	
<b>DO NOT SCALE DRAWING</b>		
<b>TITLE: WIRING INSTL-BODY,12V</b>		
SHEET 8	PART NO <b>181365</b>	REV

FOR ELECTRICAL  
TORQUE  
SPECIFICATIONS  
SEE DWG NO.  
128783-01-000

(X-X)  
FOR  
ELECTRICAL  
CALLOUTS  
SEE DWG NO.  
121339-01-000

\* 181365 \* A