



**DANGER**

**Danger of electrical shock, burns or death.** Always remove all power sources before attempting any repair, service or diagnostic work. Power can be present from shore power, generator, inverter or battery. All power sources must be disabled and secured before performing any service.



**CAUTION**

If you lack the skills, tools or equipment to perform diagnostic or repair work leave such work to an authorized Winnebago Industries dealer or other qualified shop.

DRAWING NO.	MODEL
181299-01	J32H
181299-02	J35P
181299-03	J37F

RELEASE	REV/DATE A	DWG NO 181299
REV ZONE	REVISION RECORD	DATE DFR-ORIG

		J32H	J37F	J35P
BLK	1B1	136131-06-040	136131-06-085	136131-06-040
	265	136134-06-040	136134-06-085	136134-06-040
BLU	1B1	136131-02-105	136131-02-261	136131-02-095
	265	136134-02-105	136134-02-261	136134-02-095
BRN	1B1	136131-03-040	136131-03-085	136131-03-040
	265	136134-03-040	136134-03-085	136134-03-040
GLD	1B1		136131-10-085	136131-10-040
	265		136134-10-085	136134-10-040
GLD-2	1B1		136131-20-085	136131-20-040
	265		136134-20-085	136134-20-040
GRN	1B1	136135-08-050	136135-08-050	136135-08-045
	265	136136-08-050	136136-08-050	136136-08-045
PUR	1B1	136131-04-040	136131-04-065	136131-04-040
	265	136134-04-040	136134-04-065	136134-04-040
RED	1B1	136135-07-050	136135-07-050	136135-07-045
	265	136136-07-050	136136-07-050	136136-07-045
WHT	1B1	136135-09-025	136135-09-051	136135-09-025
	265	136136-09-025	136136-09-051	136136-09-025
YEL	1B1	136131-05-020	136131-05-065	136131-05-020
	265	136134-05-020	136134-05-065	136134-05-020
YEL-2	1B1	136131-13-040	136131-13-085	136131-13-040
	265	136134-13-040	136134-13-085	136134-13-040
MAIN	1B1	136139-01-078	136139-01-048	136139-01-085
	265	136140-01-078	136140-01-048	136140-01-085
MAIN GROUND				
ATS GROUND		136145-01-015	136145-01-020	136145-01-015

21M OR 21S

21M OR 21S

- WASHER & DRYER-PAIR
- WASHER/DRYER PREP
- ELECTRICAL SYSTEM-50 AMP
- CODES/STANDARDS-CSA/CMVSS
- CODES/STANDARDS USA



DFTR	ORIG. DATE
CHKR	ALL DIMENSIONS ARE IN MILLIMETERS
P.E.	
M.E.	FIRST USED
DSNR	<b>13 J-SERIES</b>
UNSPECIFIED TOLERANCES ARE:	
WHOLE DIM (X)	: 3
ONE-PLACE (X.X)	: 1.5
TWO-PLACE (X.XX)	: 0.50
ANGLE	: 1°
THIRD ANGLE PROJECTION	
DO NOT SCALE DRAWING	REFER TO ES0018 FOR FASTENER TIGHTENING GUIDELINES
TITLE: <b>LOAD CENTER/ATS ASM</b>	
SHEET 1 OF 4	PART NO <b>181299</b> REV

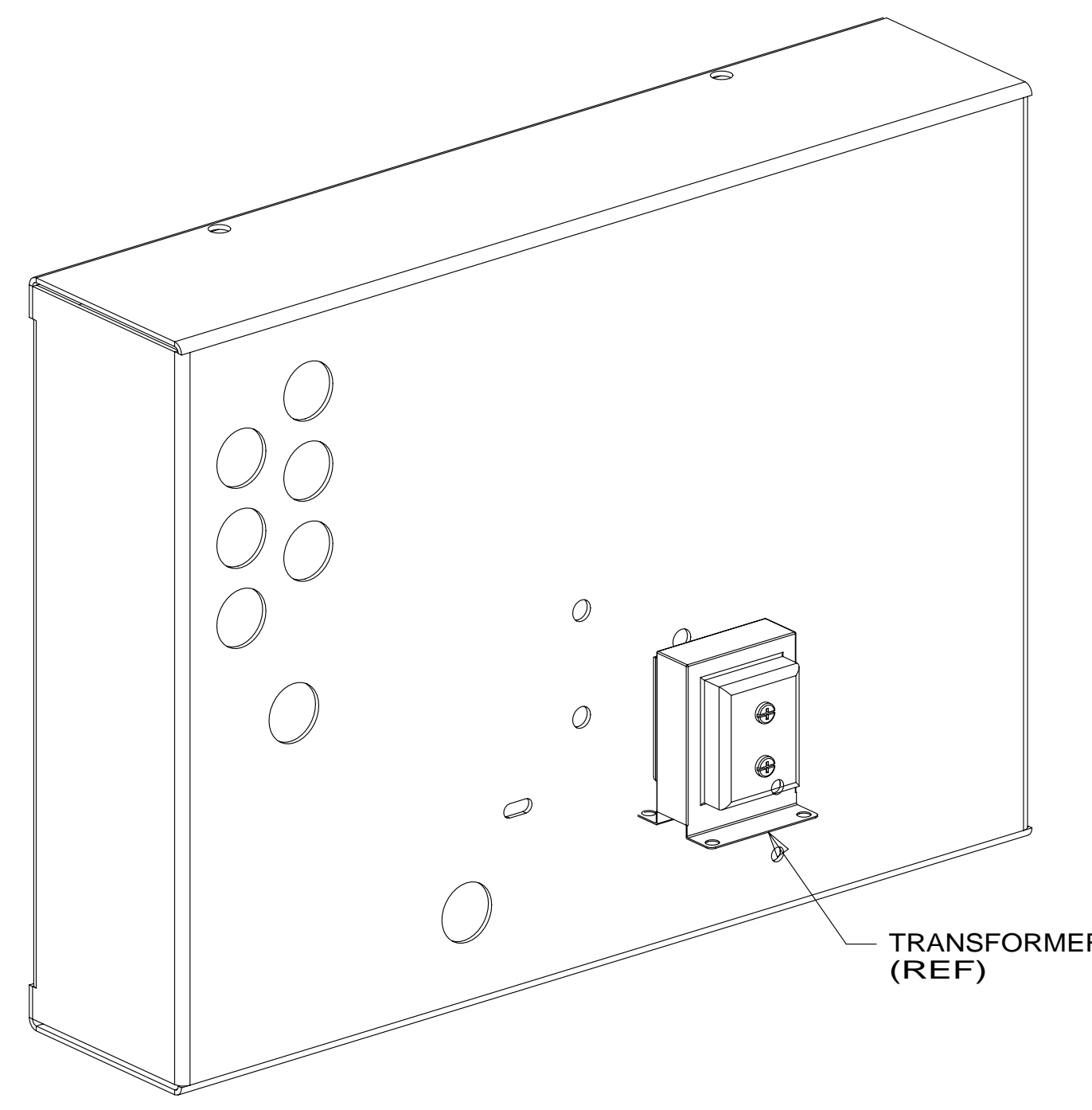
- PART OF WIRE ASM-CHASSIS.
- SEE DETAIL DA.

FOR ELECTRICAL TORQUE SPECIFICATIONS SEE DWG NO. 128783-01-000

FOR ELECTRICAL CALLOUTS SEE DWG NO. 121339-01-000

		J32H	J37F	J35P
THROW IN WIRE #1	1B1	136131-03-080 1	136131-03-070 1	136131-03-080 1
	265	136134-03-080 1	136134-03-070 1	136134-03-080 1
THROW IN WIRE #2	1B1			
	265			
THROW IN WIRE #3	1B1	136131-12-057 1	136131-12-145 1	136131-12-065 1
	265	136134-12-057 1	136134-12-145 1	136134-12-065 1
THROW IN WIRE #4	1B1	136131-13-023 1	136131-13-028 1	136131-13-028 1
	265	136134-13-023 1	136134-13-028 1	136134-13-028 1
THROW IN WIRE #5	1B1	136131-12-150 3	136131-12-160 3	136131-12-115 3
	265	136134-12-150 3	136134-12-160 3	136134-12-115 3
THROW IN WIRE #6	1B1	136131-04-010 1 4 401	136131-04-010 1 4 401	136131-04-010 1 4 401
	265	136134-04-010 1 4 401	136134-04-010 1 4 401	136134-04-010 1 4 401
THROW IN WIRE #7	1B1	136131-12-018 1 49M	136131-12-055 1	136131-12-090 1
	265	136134-12-018 1 49M	136134-12-055 1	136134-12-090 1
THROW IN WIRE #8	1B1	136131-12-010 1 4 401	136131-12-010 1 4 401	136131-12-010 1 4 401
	265	136134-12-010 1 4 401	136134-12-010 1 4 401	136134-12-010 1 4 401
THROW IN WIRE #9	1B1	136131-12-090 1	136131-10-044 1	136131-10-040 1
	265	136134-12-090 1	136134-10-044 1	136134-10-040 1
THROW IN WIRE #10	1B1		136131-20-043 1	136131-20-040 1
	265		136134-20-043 1	136134-20-040 1
THROW IN WIRE #11	1B1			136131-12-018 1 49M 49N
	265			136134-12-018 1 49M 49N

	J32H	J37F	J35P
SLIDEOUT WIRE #1	136151-03-017 5	136151-03-017 5	136151-03-017 5
SLIDEOUT WIRE #2	136151-06-017 5	136151-06-017 5	136151-06-017 5
SLIDEOUT WIRE #3	136151-12-017 5	136151-12-017 5	136151-12-017 5
SLIDEOUT WIRE #4	136151-13-017 5	136151-13-017 5	136151-13-017 5
SLIDEOUT WIRE #5	136151-12-028 2	136151-10-019 5	136151-10-019 5
SLIDEOUT WIRE #6		136151-04-015 2	136151-12-018 2
SLIDEOUT WIRE #7		136151-02-023 2	136151-02-027 2
SLIDEOUT WIRE #8		136151-20-017 5	136151-20-017 5



DETAIL BA  
(LOAD CENTER SHOWN FROM THE BACK SIDE)

- NOTES:
- 5 SEE DETAIL DE.
  - 4 SEE DETAIL DF.
  - 3 SEE DETAIL DC.
  - 2 SEE DETAIL DB.
  - 1 SEE DETAIL DA.

- 21R DINING/BUFFET/POWERED TV
- 49N SLEEP NUMBER BED-KING SIZE
- 49M SLEEP NUMBER BED-QUEEN SIZE
- 401 INVERTER-DC/AC, 1000 WATT
- 78J ELECTRICAL SYSTEM-50 AMP
- 265 CODES/STANDARDS-CSA/CMVSS
- 1B1 CODES/STANDARDS USA

1B1 265 78J

FIRST USED

## 13 J-SERIES

DO NOT SCALE DRAWING

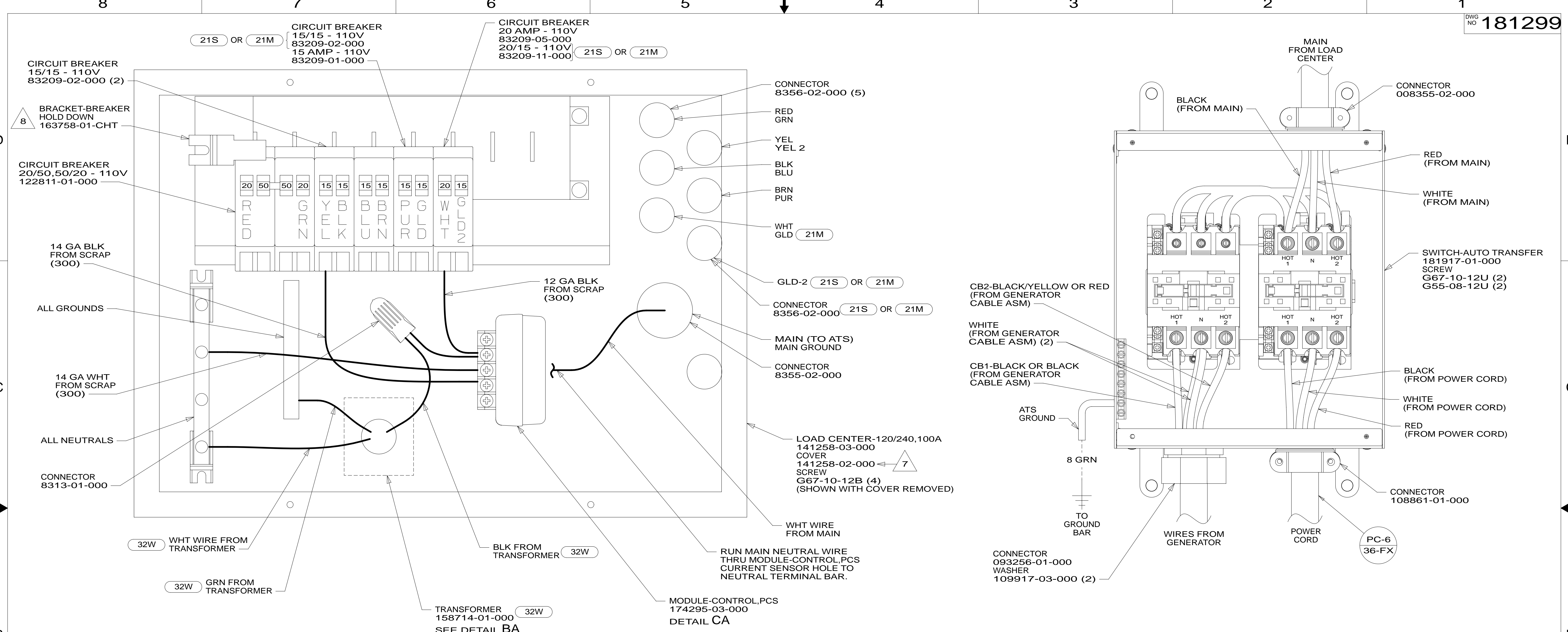
TITLE: LOAD CENTER/ATS ASM

SHEET 2 PART NO 181299 REV

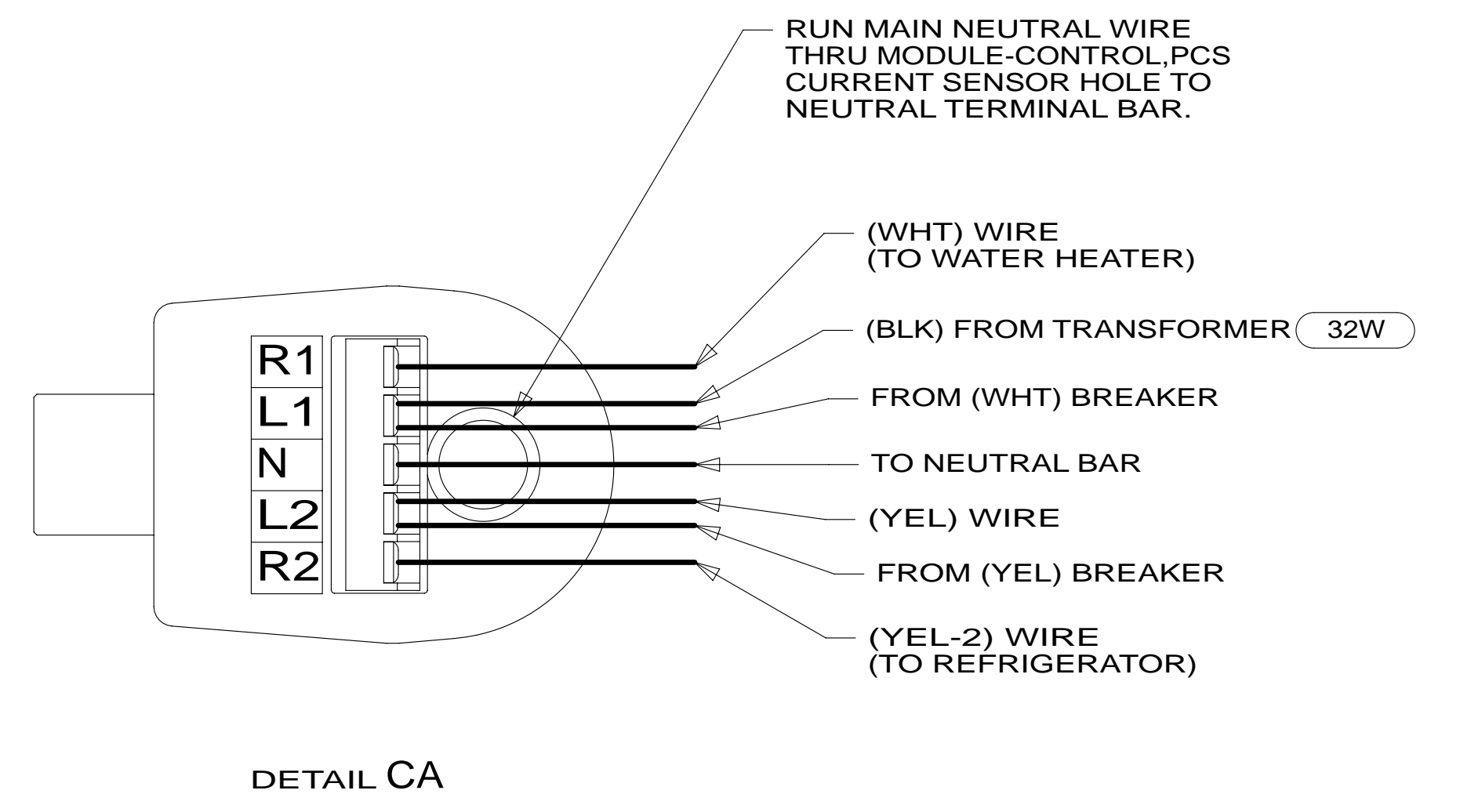
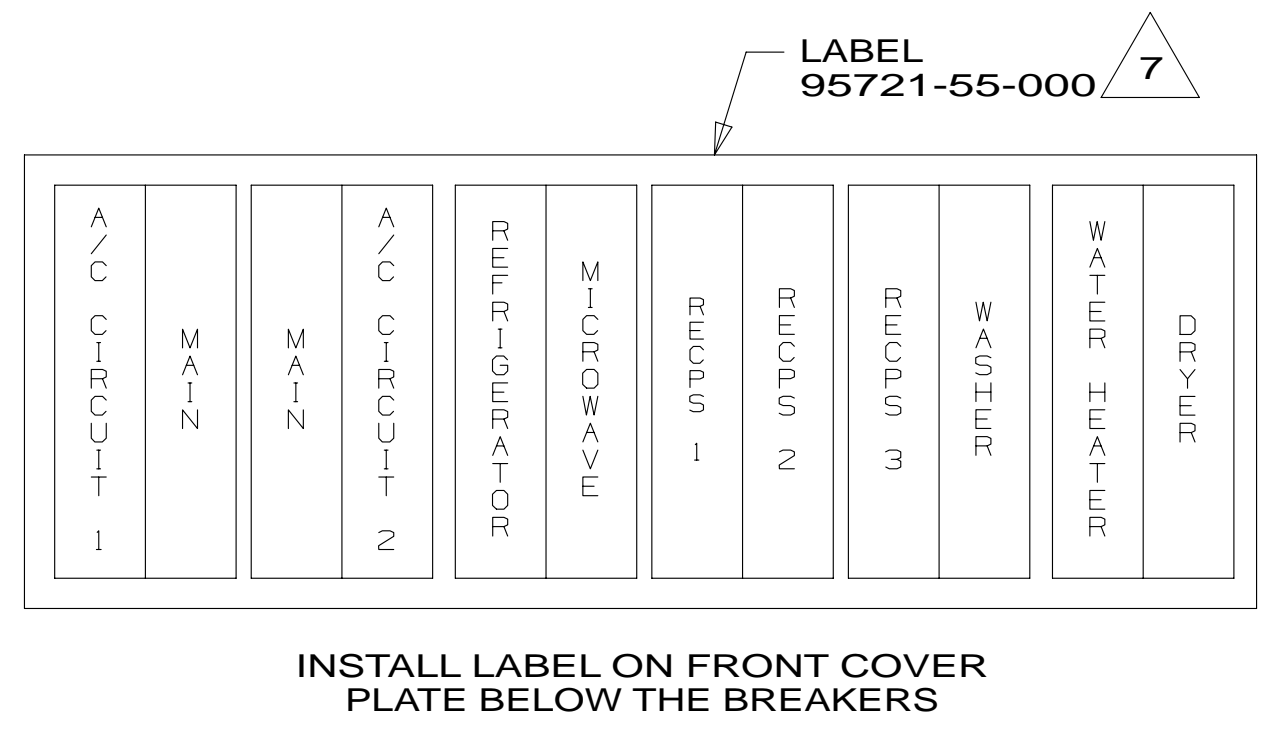
19-Sep-2012

FOR ELECTRICAL TORQUE SPECIFICATIONS SEE DWG NO. 128783-01-000

FOR ELECTRICAL CALLOUTS SEE DWG NO. 121339-01-000



- 8** LOOSEN LEFT BUSS BAR MOUNTING SCREW, INSERT BRACKET-BREAKER HOLD DOWN UNDER SCREW, ORIENTATE BRACKET TOWARD MAIN BREAKER AS SHOWN AND TIGHTEN SCREW.
- 7** INSTALLED BY ASSEMBLY LINE.
- 6.** REMOVE 400MM FROM OUTER JACKET ON ALL WIRES ENTERING LOAD CENTER AND TRIM INDIVIDUAL CONDUCTORS AS REQUIRED TO MAKE INTERNAL CONNECTIONS.
- 5.** ATTACH WIRES TO BACKSIDE OF LOAD CENTER, USE EXISTING HOLES AND TIE-WIRE 116673-01-000.
- 4.** ALL 110V STRANDED WIRE W/O TERMINALS TO BE STRIPPED 10MM AND SOLDER DIPPED.
- 3.** ALL WIRES TO BE CLAMPED WITHIN 200MM OF ATS.
- 2.** GROUND WIRES ARE NOT SHOWN FOR CLARITY.
- 1.** ALL GROUND WIRES TO BE COVERED WITH TUBING 8041-02-000.
- NOTES:**



- (21S) WASHER & DRYER-PAIR
- (32W) GENERATOR-START,AUTO SYSTEM
- (21M) WASHER/DRYER PREP
- (78J) ELECTRICAL SYSTEM-50 AMP
- (265) CODES/STANDARDS-CSA/CMVSS
- (1B1) CODES/STANDARDS USA

FOR ELECTRICAL TORQUE SPECIFICATIONS SEE DWG NO. 128783-01-000

FOR ELECTRICAL CALLOUTS SEE DWG NO. 121339-01-000

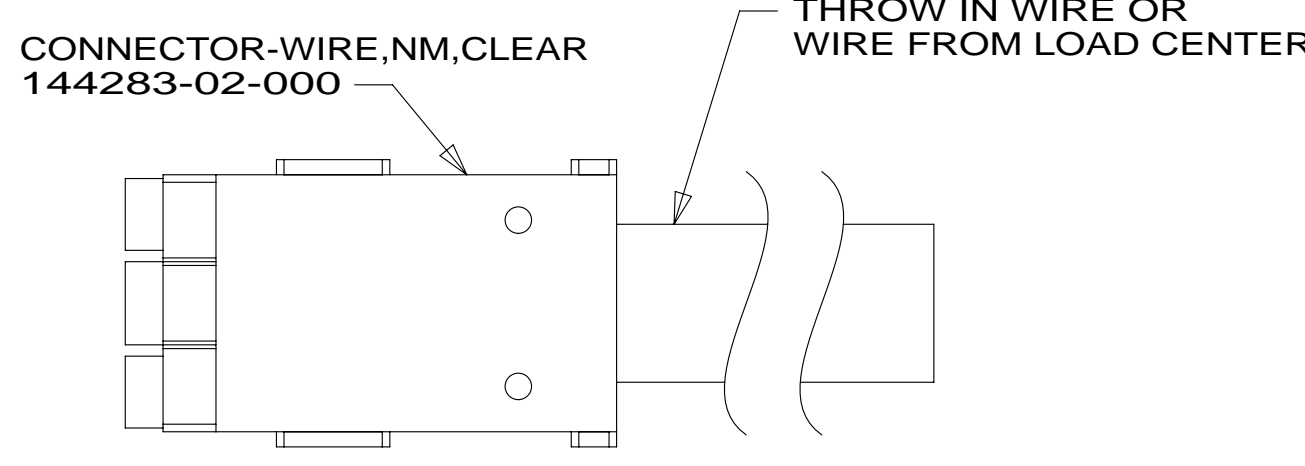
**13 J-SERIES**

**DO NOT SCALE DRAWING**

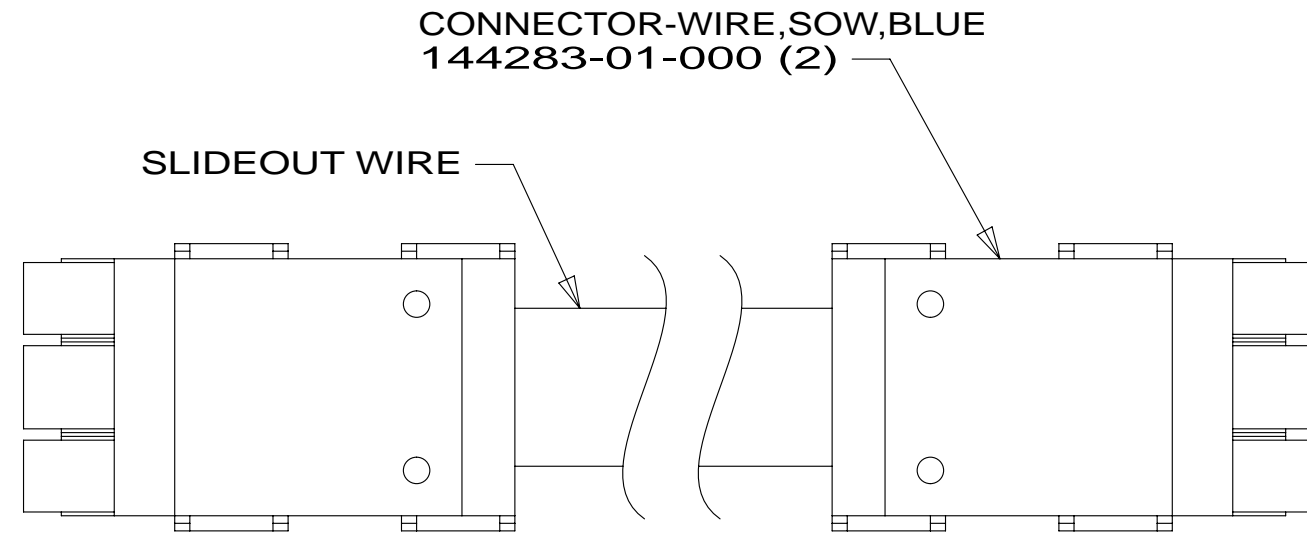
TITLE: **LOAD CENTER/ATS ASM**

SHEET **3** PART NO. **181299** REV

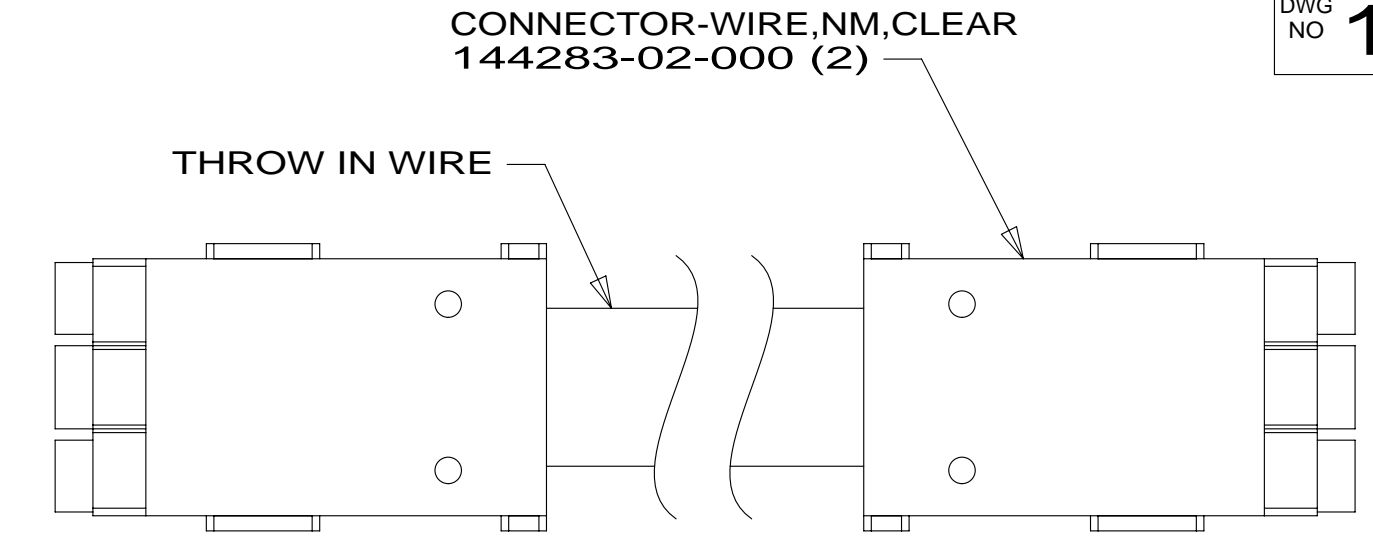
19-Sep-2012



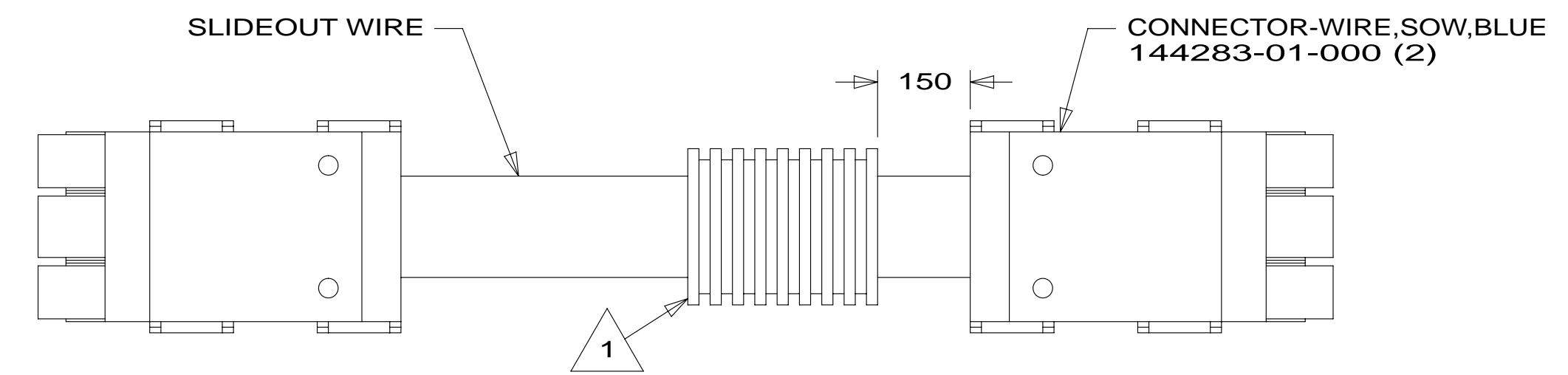
DETAIL DA



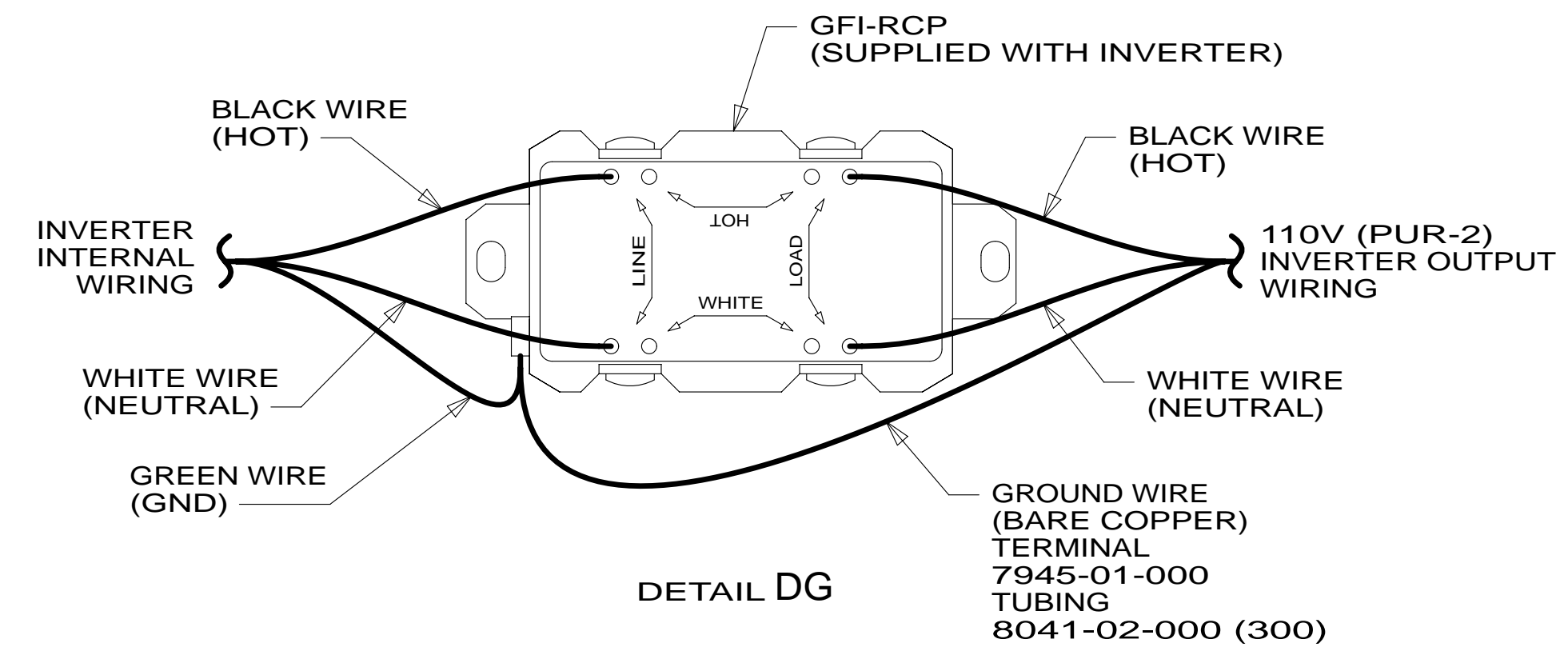
DETAIL DB



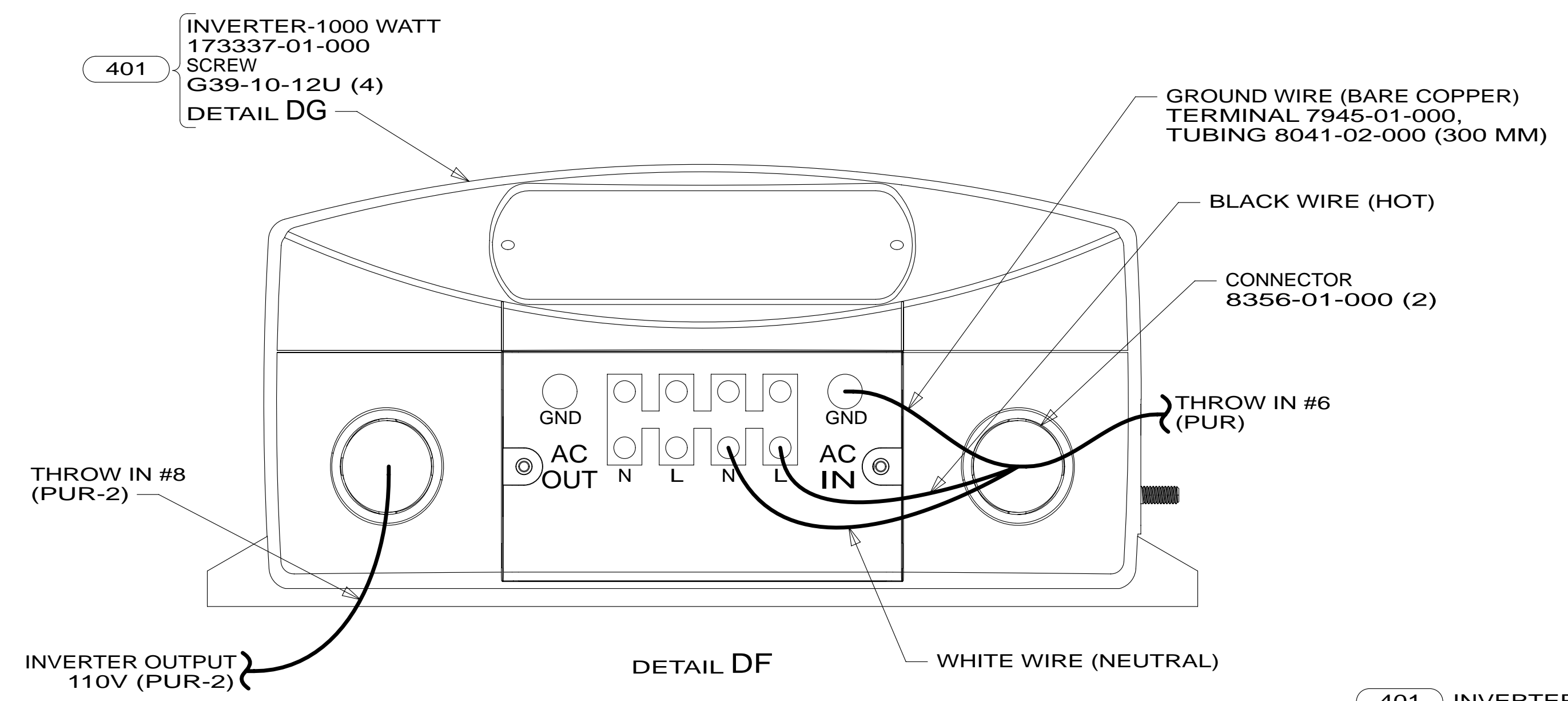
DETAIL DC



DETAIL DE



DETAIL DG



DETAIL DF

1 APPLY 300MM OF CONDUIT-CONVOLUTE 41953-05-000 OVER WIRE AT DIMENSION SHOWN AND SECURE BOTH ENDS OF TUBING TO WIRE WITH TAPE 8363-01-000.

NOTES:

FOR ELECTRICAL TORQUE SPECIFICATIONS SEE DWG NO. 128783-01-000

FOR ELECTRICAL CALLOUTS SEE DWG NO. 121339-01-000

- 401 INVERTER-DC/AC, 1000 WATT
- 78J ELECTRICAL SYSTEM-50 AMP
- 265 CODES/STANDARDS-CSA/CMVSS
- 1B1 CODES/STANDARDS USA

FIRST USED	
<b>13 J-SERIES</b>	
DO NOT SCALE DRAWING	
TITLE: <b>LOAD CENTER/ATS ASM</b>	
SHEET 4	PART NO <b>181299</b> REV
19-Sep-2012	