



DANGER

Danger of electrical shock, burns or death. Always remove all power sources before attempting any repair, service or diagnostic work. Power can be present from shore power, generator, inverter or battery. All power sources must be disabled and secured before performing any service.

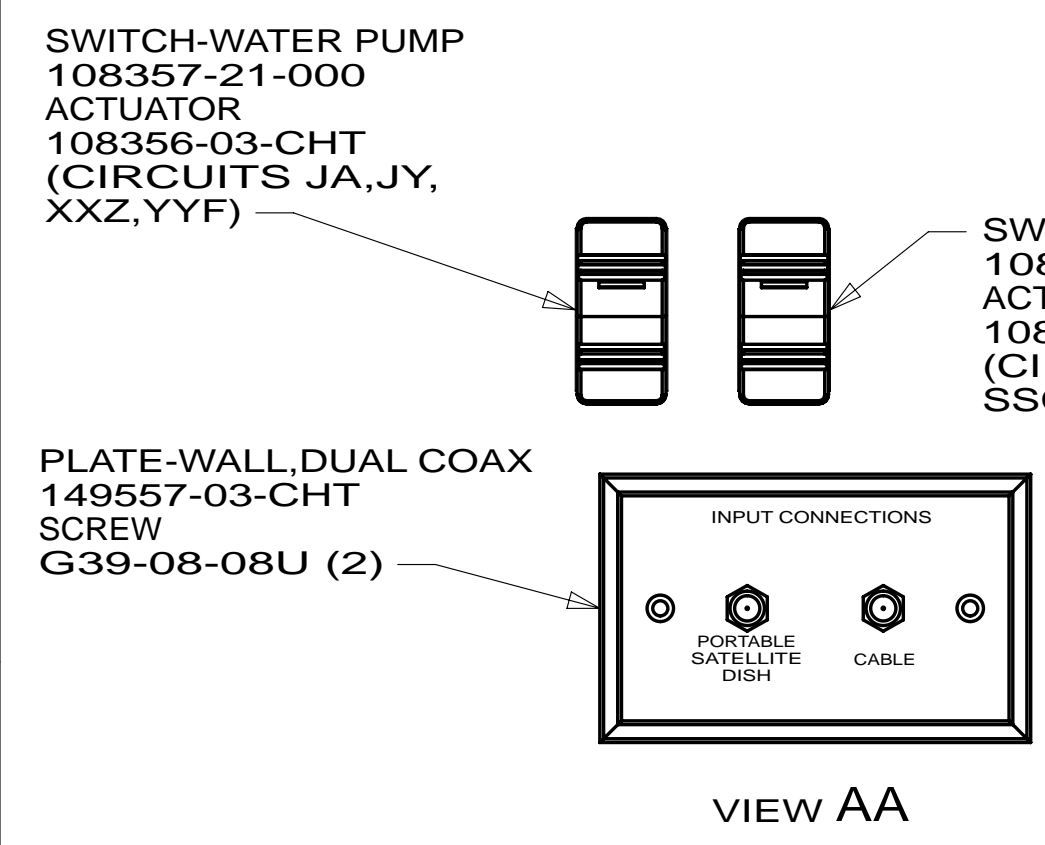


CAUTION

If you lack the skills, tools or equipment to perform diagnostic or repair work leave such work to an authorized Winnebago Industries dealer or other qualified shop.

DRAWING NO.	FEATURE
181087-01	WIN
181087-02	ITA

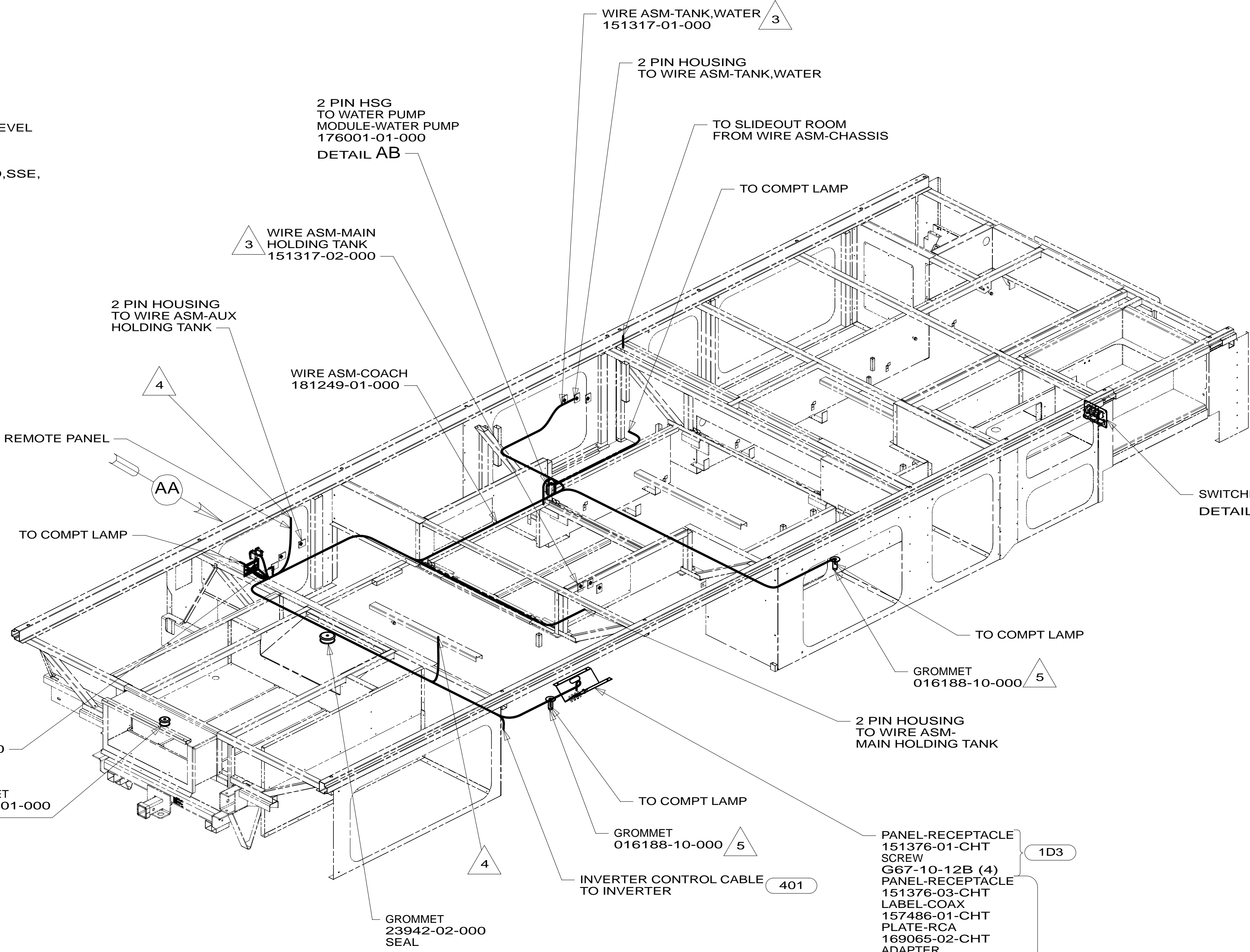
RELEASE	REV/DATE	DWG NO	181087
REV ZONE	REVISION RECORD	DATE	DTR-ORIG



SWITCH-WATER PUMP
108357-21-000
ACTUATOR
108356-03-CHT
(CIRCUITS JA,,JY,
XXZ,YYF)

PLATE-WALL,DUAL COAX
149557-03-CHT
SCREW
G39-08-08U (2)

SWITCH-AUTO LEVEL
108357-18-000
ACTUATOR
108356-03-CHT
(CIRCUITS SSD,SSE,
SSC,SSF,SSE)

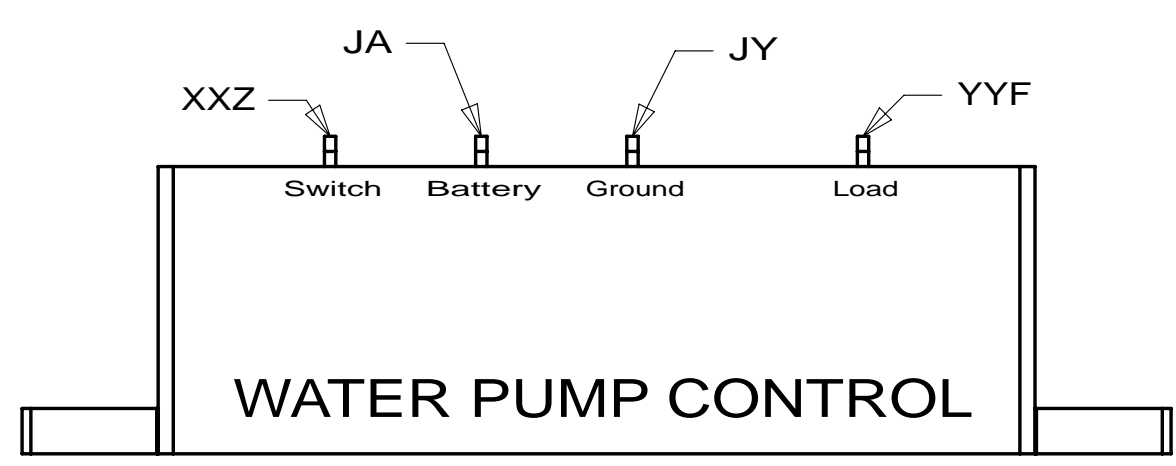


- 5 TRIM EXCESS GROMMET LENGTH.
- 4 WIRE PASSES THRU FLOOR IN THIS AREA.
- 3 PLACE CROSS LOCATOR ON SENSORS OVER DIMPLES ON TANK.

2. ROUTE TANK SENSOR WIRES SO THEY DO NOT PASS OVER SENSORS. USE WIRE TIE MOUNT 155366-01-000 AND WIRE TIE 8343-01-000 AS NEEDED. TANK SURFACE MUST BE CLEANED USING ISOPROPYL ALCOHOL AND PRIME WITH PRIMER 94.

1. ALL WIRES TO BE SECURED WITH CLAMP 10495 OR 10497 OR WIRE TIE 8343 OR 108046 EVERY 600MM, USE SCREW G67-XX-XXX OR G56-XX-XXX AS APPROPRIATE FOR INSTALLATION.

NOTES:



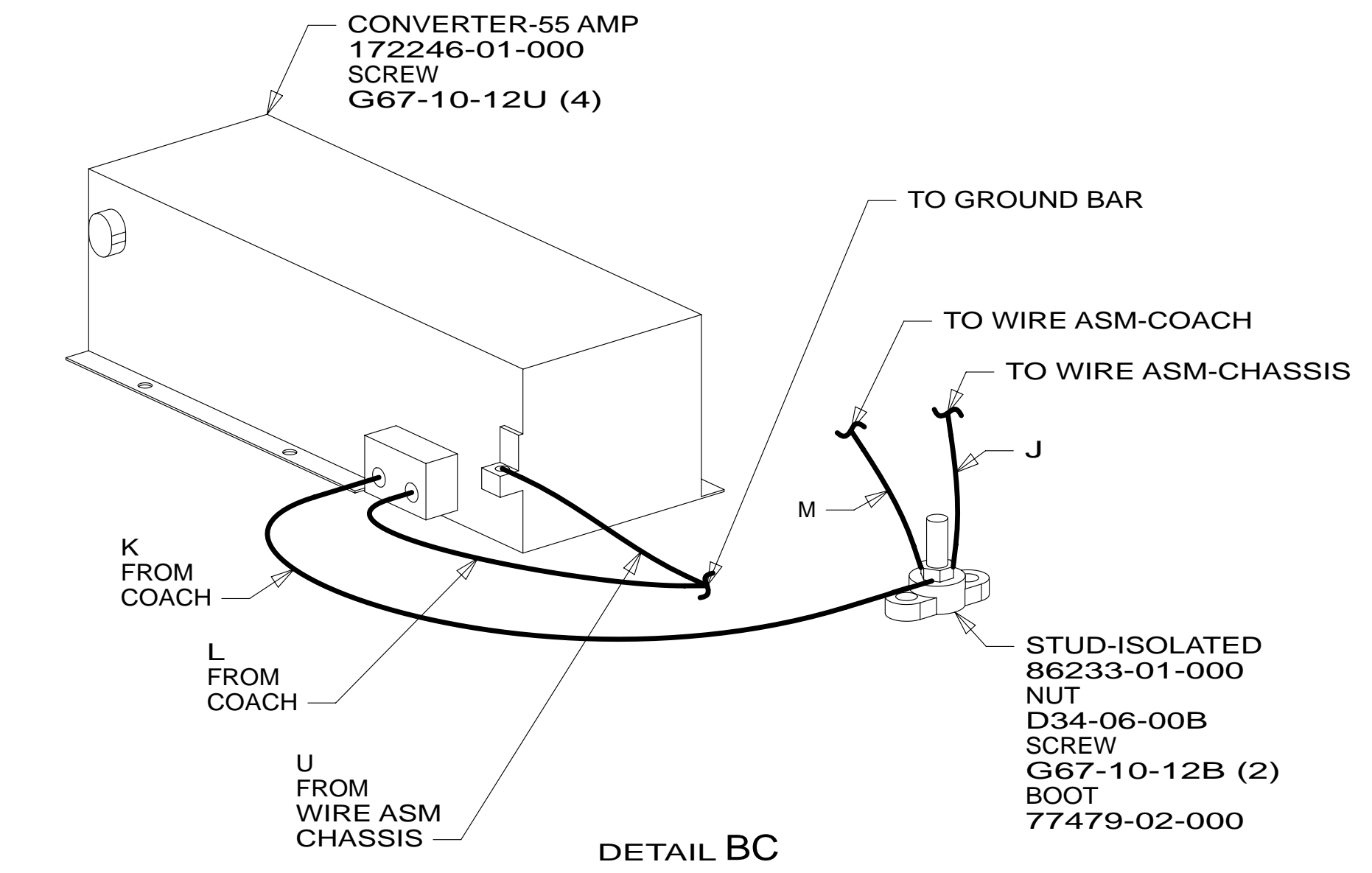
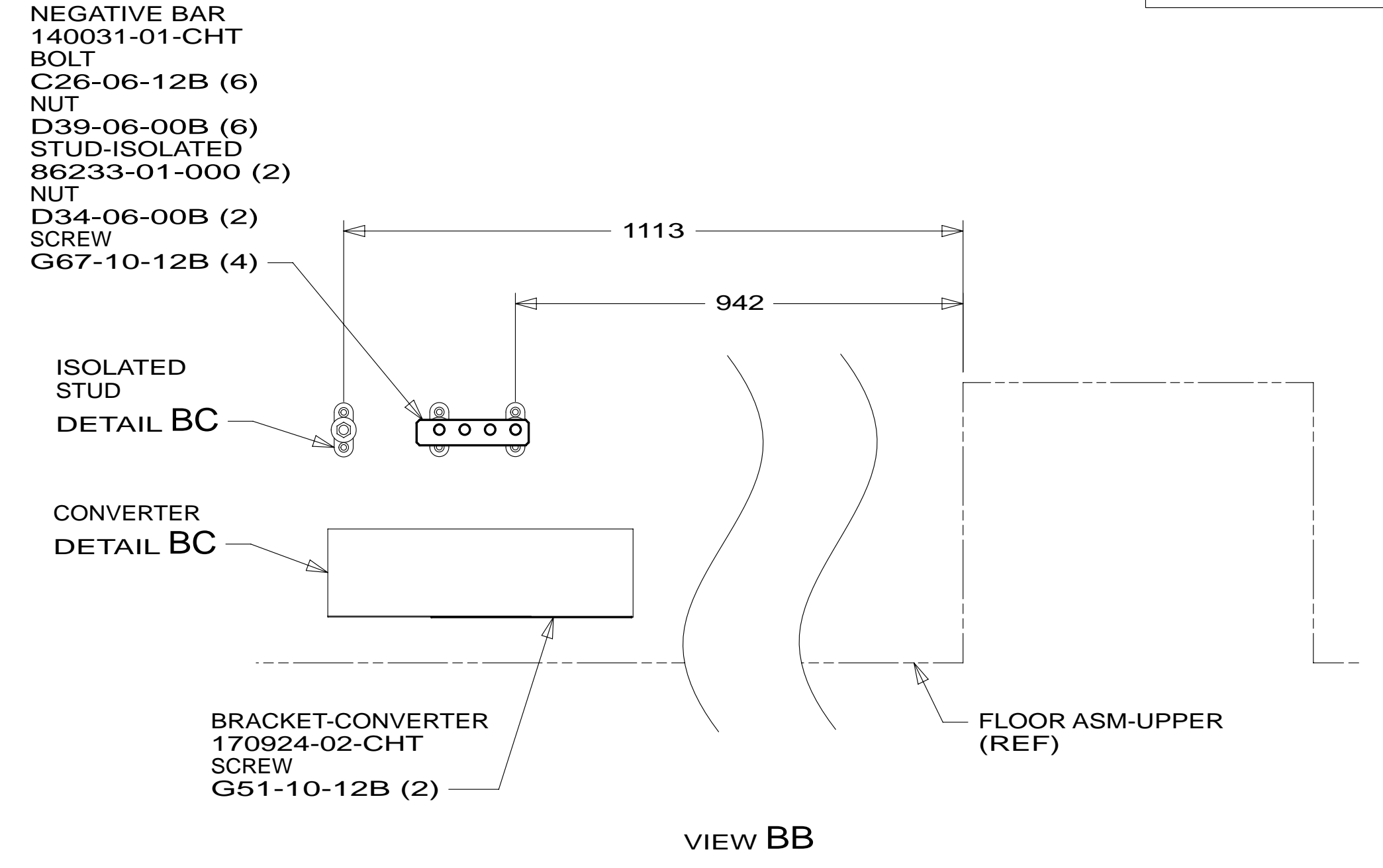
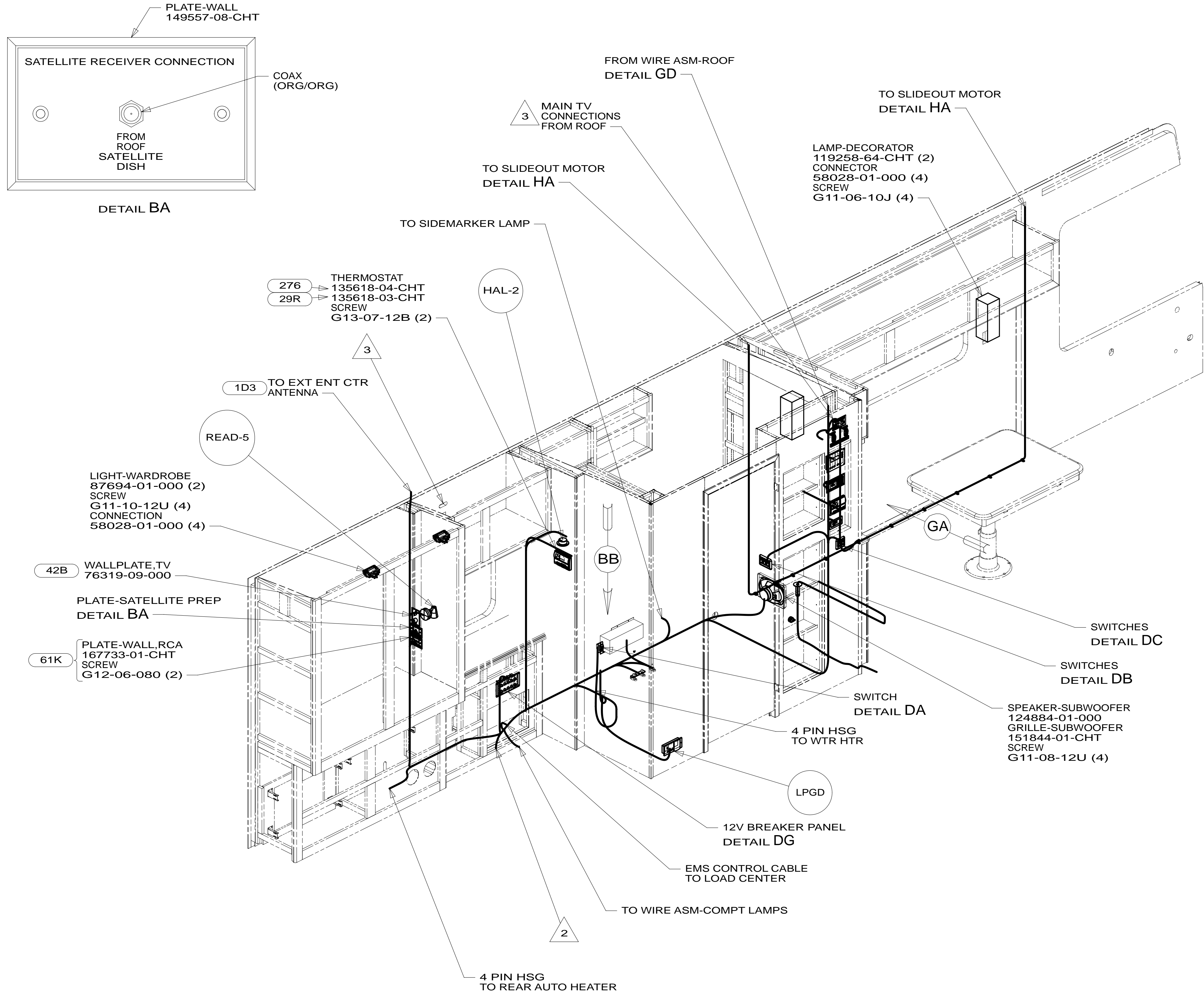
FOR ELECTRICAL TORQUE SPECIFICATIONS SEE DWG NO. 128783-01-000

FOR ELECTRICAL CALLOUTS SEE DWG NO. 121339-01-000

- 299 ENTERTAINMENT CENTER EXT.W/O
- 1D3 ENTERTAIN CENTR/EXT TV-DVD
- 401 INVERTER-DC/AC, 1000 WATT
- ITA ITASCA ONLY
- WIN WINNEBAGO ONLY
- 265 CODES/STANDARDS-CSA/CMVSS
- 1B1 CODES/STANDARDS USA

WINNEBAGO COPYRIGHT 2011 WINNEBAGO INDUSTRIES, INC.

DTR	ORIG. DATE
CHKR	ALL DIMENSIONS ARE IN MILLIMETERS
P.E.	FIRST USED
M.E.	13 D30A
DSNR	MATERIAL:
UNSPECIFIED TOLERANCES ARE:	
WHOLE DIM (X)	: 3
ONE-PLACE (X.X)	: 1.5
TWO-PLACE (X.XX)	: 0.50
ANGLE	: 1°
THIRD ANGLE PROJECTION	
DO NOT SCALE DRAWING	REFER TO ES0018 FOR FASTENER TIGHTENING GUIDELINES
TITLE: WIRING INSTL-BODY,12V	
SHEET 1 OF 8	PART NO 181087 REV
REF:	1 12-Jun-2012



3 FOR ADDITIONAL INFORMATION SEE WIRING INSTL-TV/DVD.

2 WIRE PASSES THRU FLOOR IN THIS AREA.

1. ALL WIRES TO BE SECURED WITH CLAMP 10495 OR 10497 OR WIRE TIE 8343 OR 108046 EVERY 600MM, USE SCREW G67-XX-XXX OR G56-XX-XXX AS APPROPRIATE FOR INSTALLATION.

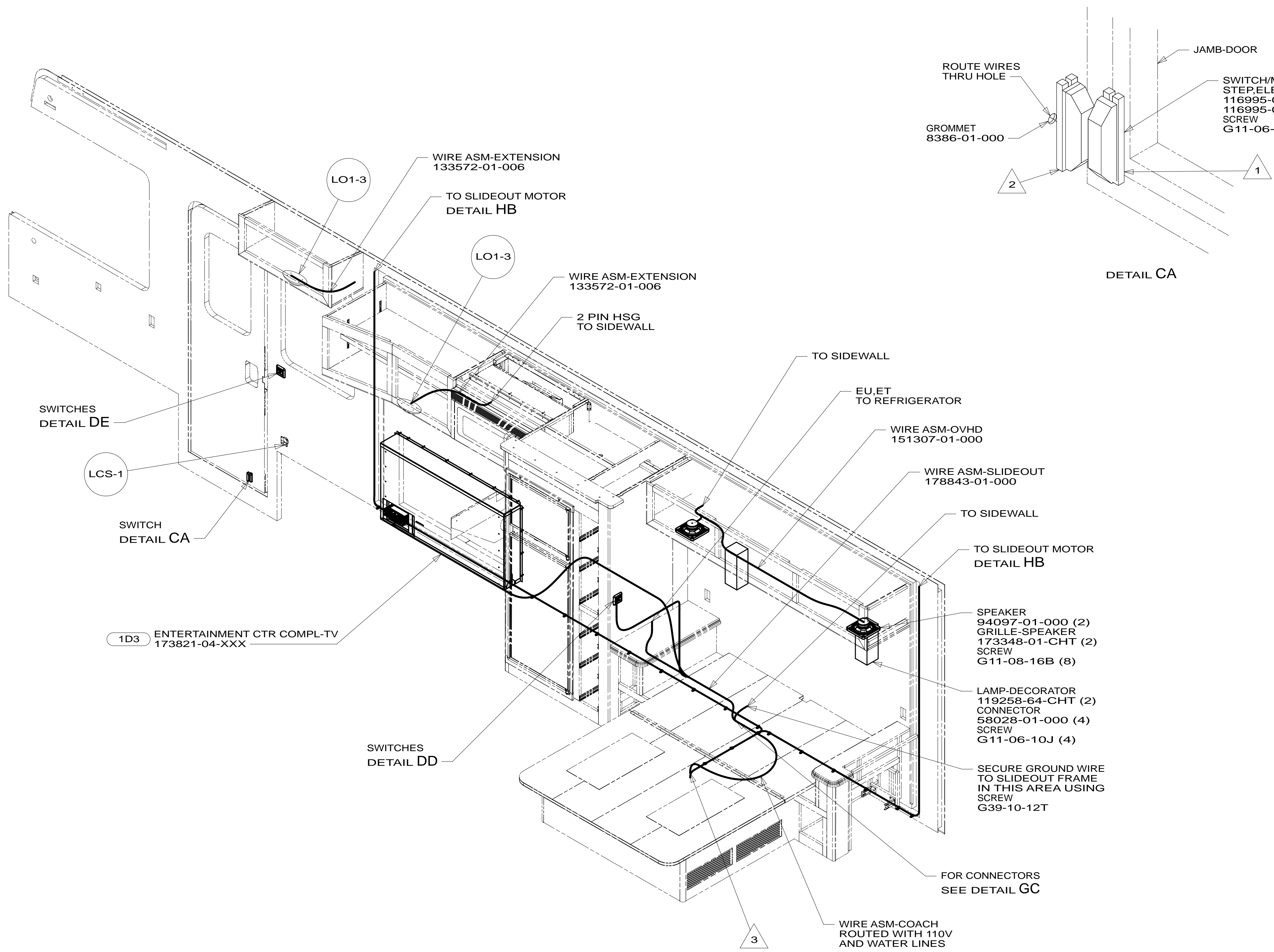
NOTES:

FOR ELECTRICAL TORQUE SPECIFICATIONS SEE DWG NO. 128783-01-000

FOR ELECTRICAL CALLOUTS SEE DWG NO. 121339-01-000

- 42B TV,REAR-WITHOUT
- 1D3 ENTERTAIN CENTR/EXT TV-DVD
- 276 A/C ROOF-HI EFF (2) W/EMS
- 29R AC HEAT PUMP-2 HI EFFICIENCY
- 61K TV(REAR)-26" COLOR STEREO
- 265 CODES/STANDARDS-CSA/CMVSS
- 1B1 CODES/STANDARDS USA

1B1	265
FIRST USED	
13 D30A	
DO NOT SCALE DRAWING	
TITLE: WIRING INSTL-BODY,12V	
SHEET 2	PART NO 181087 REV
12-Jun-2012	



- 92K EXTERIOR GRAPHICS PACKAGE #2
- 92A EXT FULL BODY PAINT PKG # 2
- 29R AC HEAT PUMP-2 HI EFFICIENCY
- 27G EXTERIOR GRAPHICS PACKAGE #1
- 27A EXT FULL BODY PAINT PKG #1
- 276 A/C ROOF-HI EFF (2) W/EMS
- 26H EXT GRAPHIC/PAINT-DLX PKG 2
- 26F EXT GRAPHIC/PAINT DLX PKG 1
- 24C EXT FULL BODY PAINT PKG # 3
- 1D3 ENTERTAIN CTR/EXT TV-DVD
- 265 CODES/STANDARDS-CSA/CMVSS
- 1B1 CODES/STANDARDS USA

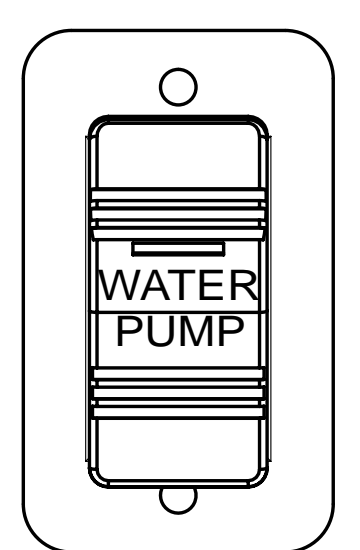
4. ALL WIRES TO BE SECURED WITH CLAMP 10495 OR 10497 OR WIRE TIE 8343 OR 108046 EVERY 600MM, USE SCREW G67-XX-XXX OR G56-XX-XXX AS APPROPRIATE FOR INSTALLATION.

- 3 WIRE PASSES THRU FLOOR IN THIS AREA.
- 2 MOUNT SWITCH AND SPACER TO BLOCK ON JAMB, ADJUST HEIGHT TO MATCH MAGNET.
- 1 MOUNT MAGNET USING PILOT HOLES IN SCREEN DOOR FRAME. MOUNT WITH MAGNET TOWARD SWITCH.

FOR ELECTRICAL TORQUE SPECIFICATIONS SEE DWG NO. 128783-01-000

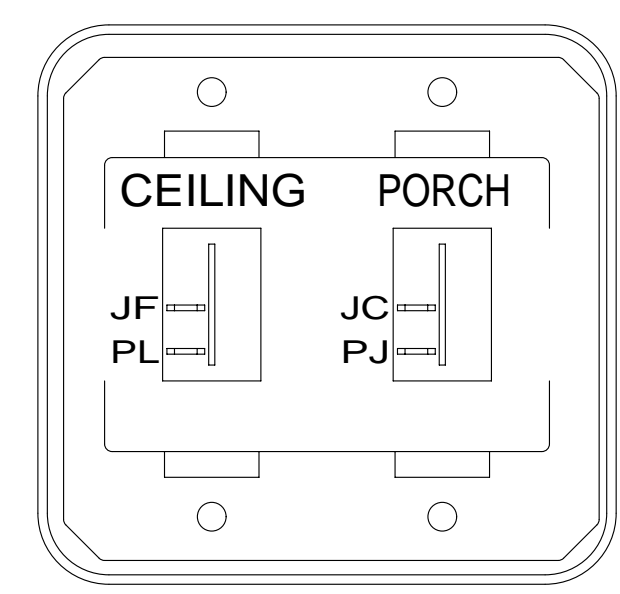
FOR ELECTRICAL CALLOUTS SEE DWG NO. 121339-01-000

FIRST USED	13 D30A	
DO NOT SCALE DRAWING		
TITLE:	WIRING INSTL-BODY,12V	
SHEET 3	PART NO 181087	REV



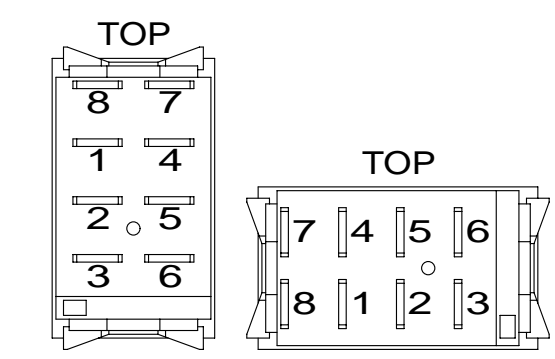
SWITCH-PUMP
108357-21-000
ACTUATOR
108356-23-CHT
PLATE
98351-07-CHT
SCREW
G11-06-10U (2)

DETAIL DA

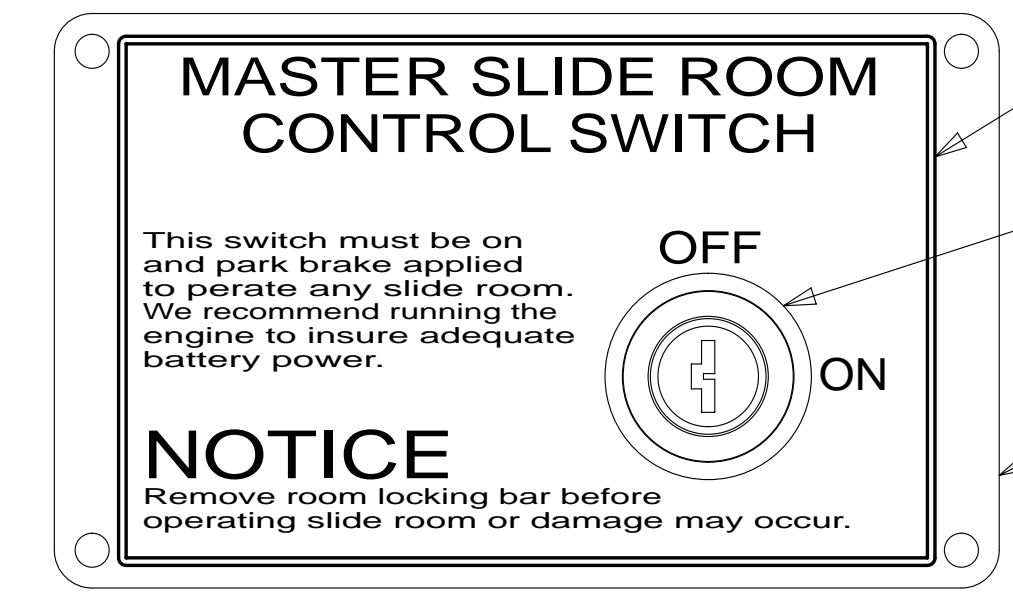


SWITCH-ROCKER
135740-01-CHT (2)
SWITCH-BASE
135741-02-CHT
SWITCH-BEZEL
135742-19-CHT
SCREW
G11-08-08U (4)

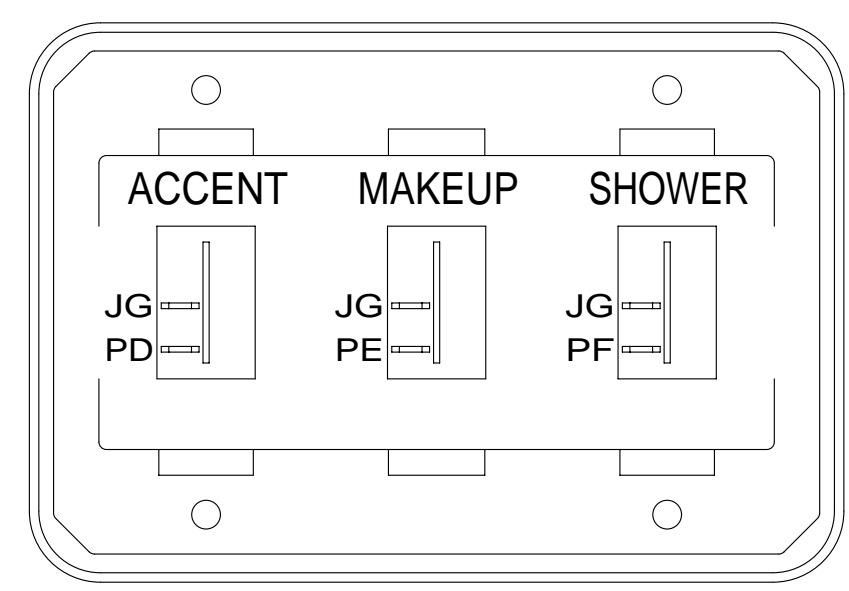
DETAIL DE



DETAIL DK

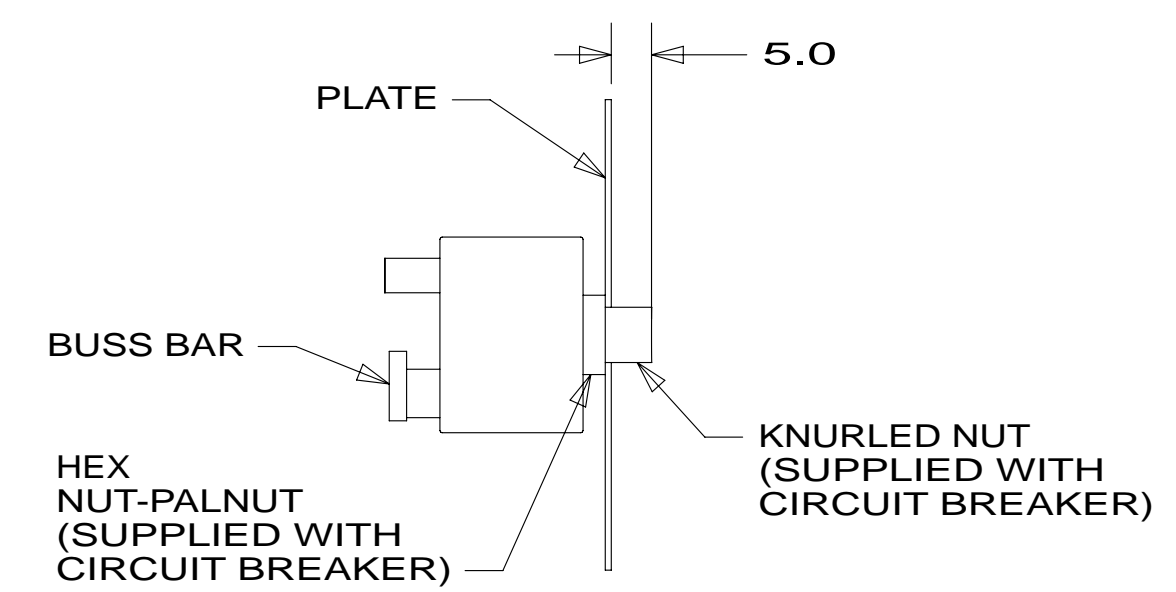


LABEL-SLIDEROOM CONTROL, MAN
163988-01-CHT
SWITCH-KEY, SPST-ILLINOIS LCK
163097-01-000
CONNECTS TO CIRCUITS DY,DDJ
PLATE-KEY, SLIDE ROOM
163987-01-CHT
SCREW
76790-05-000 (4)

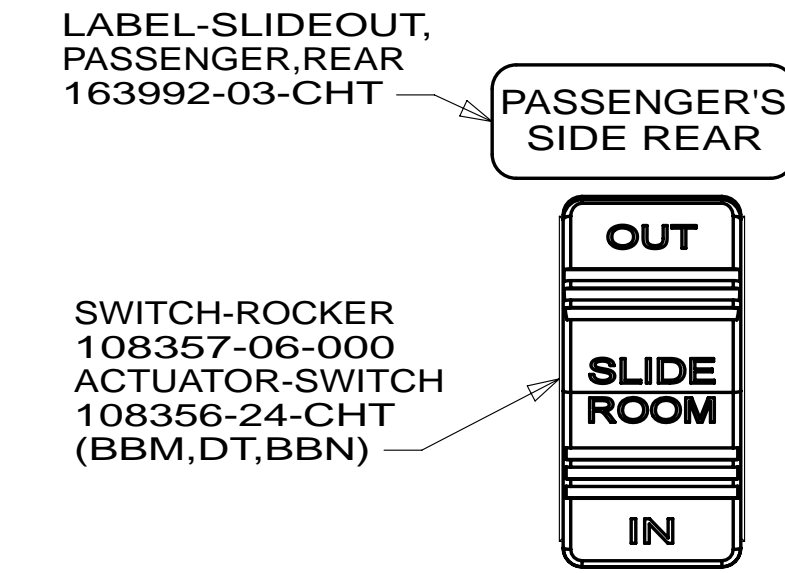


SWITCH-ROCKER
135740-01-CHT (3)
SWITCH-BASE
135741-03-CHT
SWITCH-BEZEL
135742-47-CHT
SCREW
G11-08-08U (4)

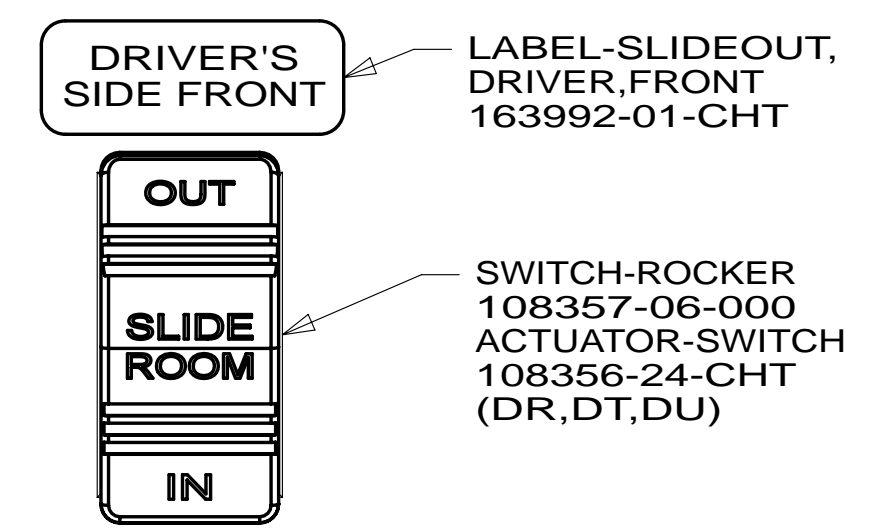
DETAIL DB



DETAIL DF-DF



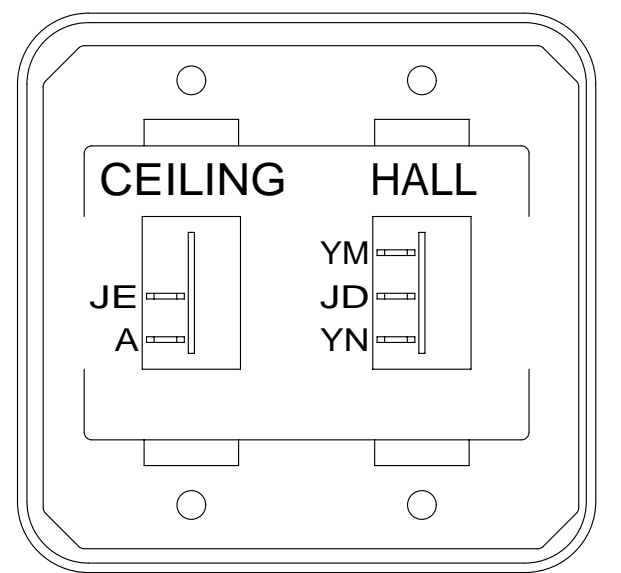
LABEL-SLIDEOUT, PASSENGER,REAR
163992-03-CHT
SWITCH-ROCKER
108357-06-000
ACTUATOR-SWITCH
108356-24-CHT (BBM,DT,BBN)



LABEL-SLIDEOUT, DRIVER,FRONT
163992-01-CHT
SWITCH-ROCKER
108357-06-000
ACTUATOR-SWITCH
108356-24-CHT (DR,DT,DU)

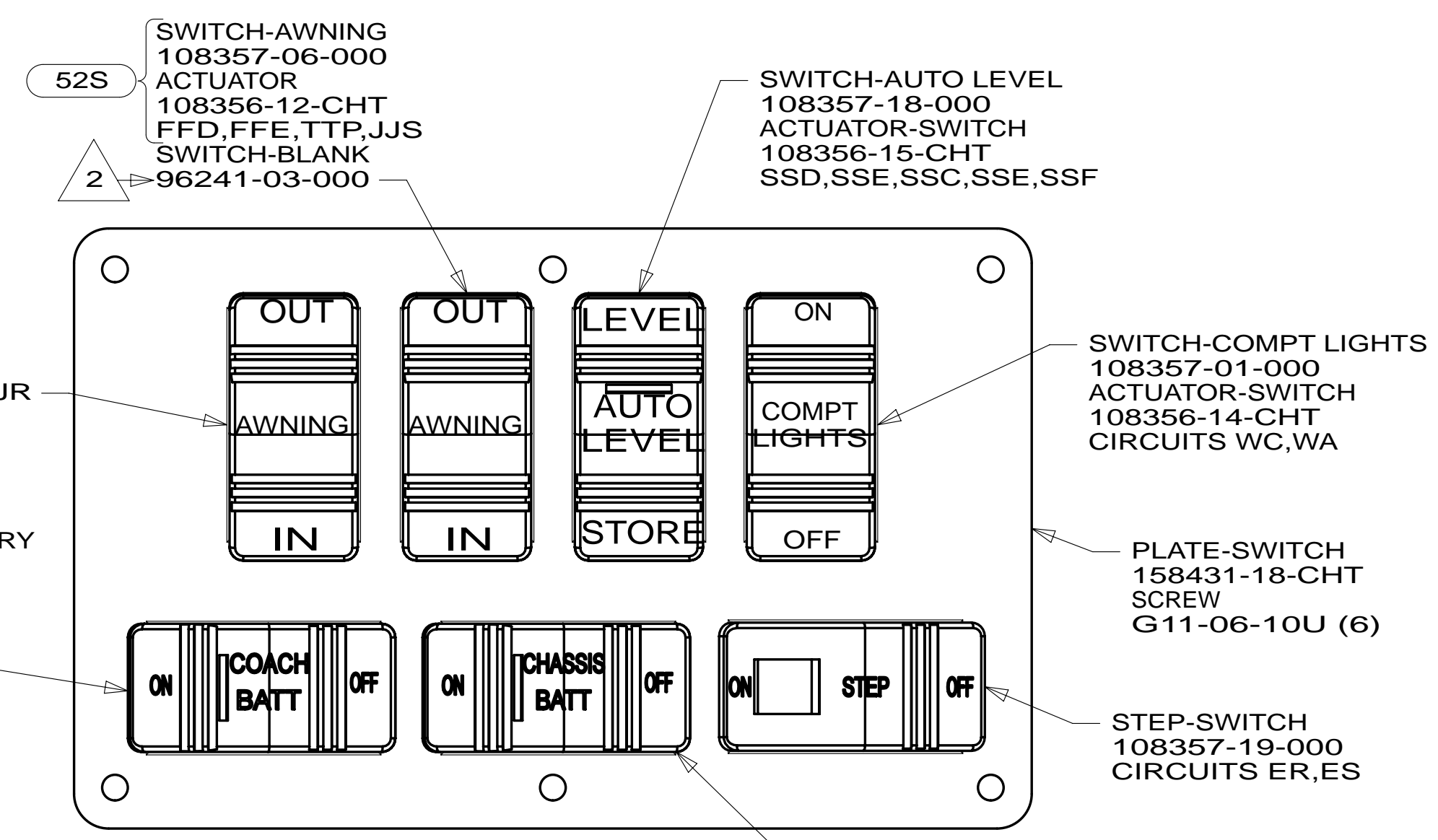
WARNING CRUSH HAZARD. Keep people and objects clear of the inside and the outside of the slideout room when operating. Failure to comply could result in death or serious injury.

DETAIL DJ



SWITCH-ROCKER
135740-01-CHT
135740-02-CHT
SWITCH-BASE
135741-02-CHT
SWITCH-BEZEL
135742-16-CHT
SCREW
G11-08-08U (4)

DETAIL DC



SWITCH-AWNING
108357-06-000
ACTUATOR
108356-12-CHT
FFD,FFE,TTP,JJS
SWITCH-BLANK
96241-03-000

SWITCH-AUTO LEVEL
108357-18-000
ACTUATOR-SWITCH
108356-15-CHT
SSD,SSE,SSC,SSE,SSF

SWITCH-AWNING
108357-06-000
ACTUATOR
108356-12-CHT
FFD,FFE,FFR,JJR

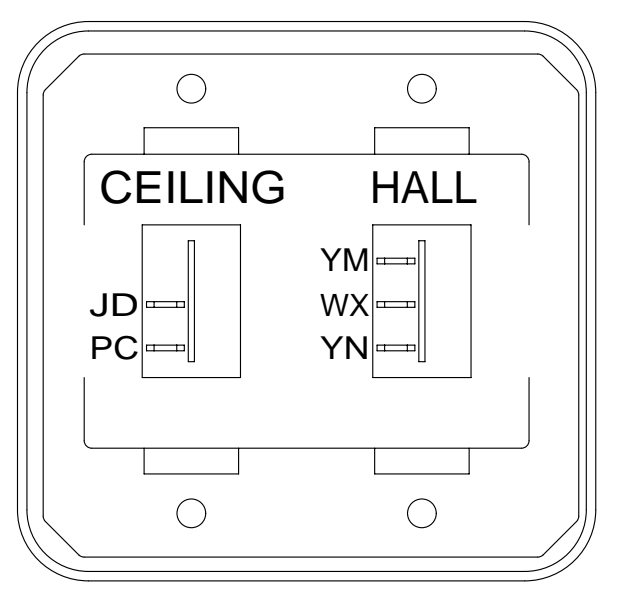
SWITCH-COMPT LIGHTS
108357-01-000
ACTUATOR-SWITCH
108356-14-CHT
CIRCUITS WC,WA

PLATE-SWITCH
158431-18-CHT
SCREW
G11-06-10U (6)

STEP-SWITCH
108357-19-000
CIRCUITS ER,ES

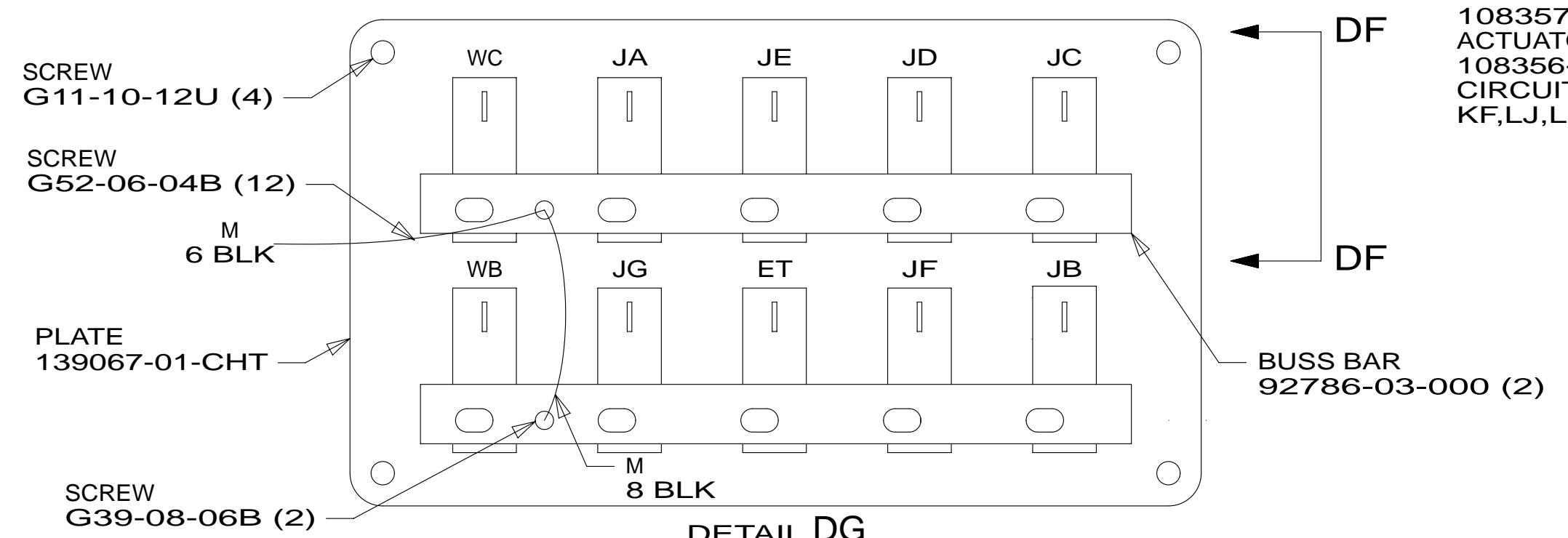
SWITCH-CHASSIS BATTERY
108357-18-000
ACTUATOR-SWITCH
108356-20-CHT
CIRCUITS
TTY,TTZ,MK,UUB,UUC

DETAIL DH

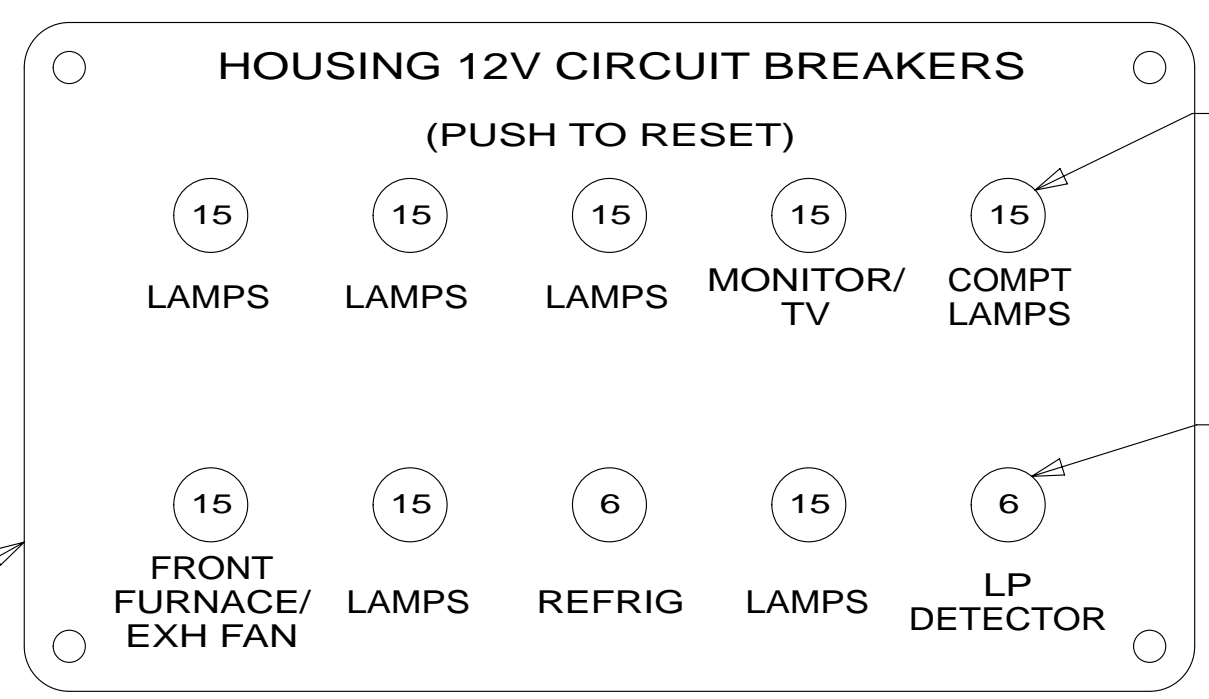


SWITCH-ROCKER
135740-01-CHT
135740-02-CHT
SWITCH-BASE
135741-02-CHT
SWITCH-BEZEL
135742-16-CHT
SCREW
G11-08-08U (4)

DETAIL DD



DETAIL DG (BACK VIEW)



DETAIL DG (FRONT VIEW)

CIRCUIT BREAKER
93654-02-000 (8)

CIRCUIT BREAKER
93654-01-000 (2)

LABEL
92547-06-000

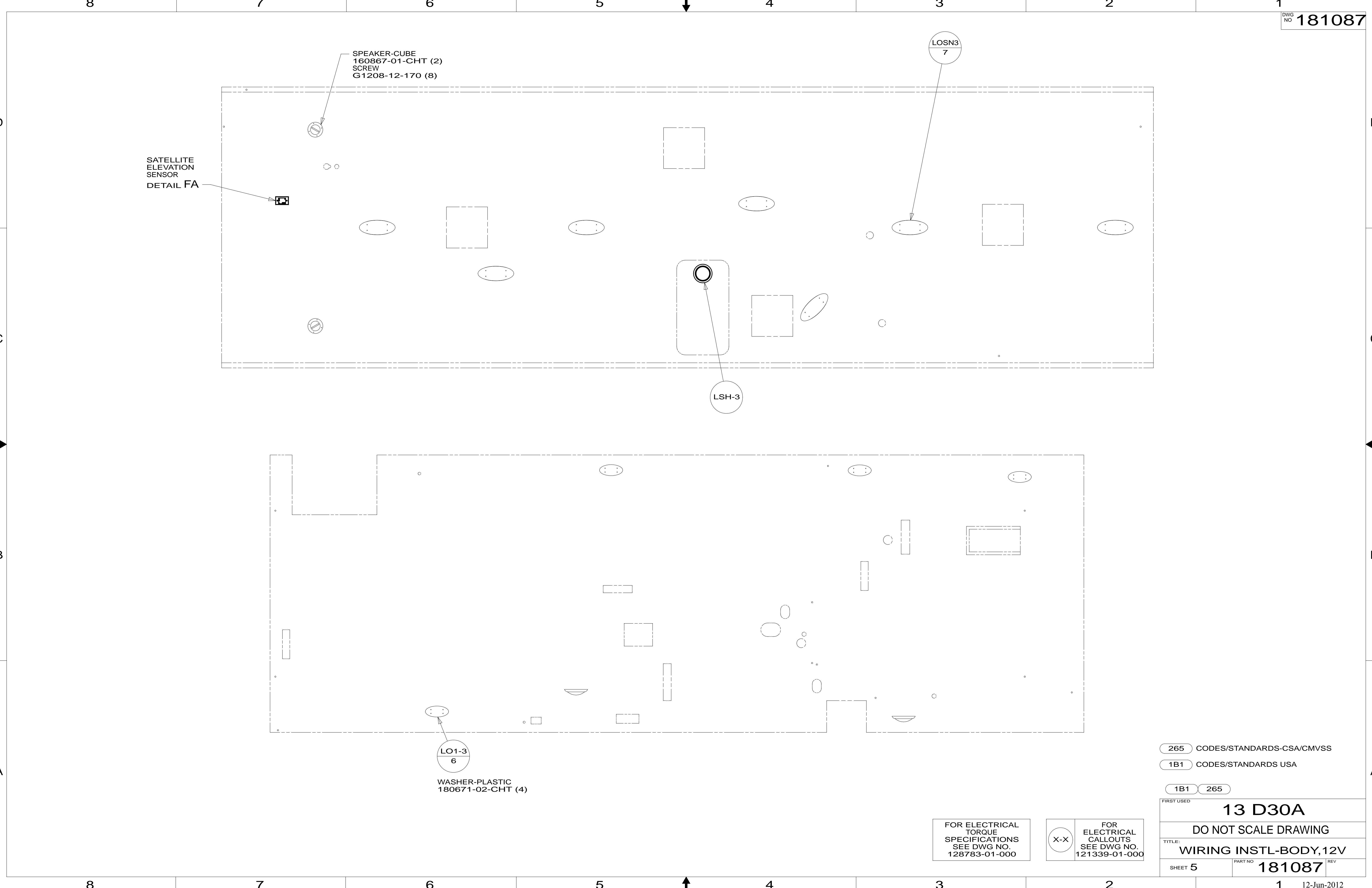
- 52N AWNING - PATIO, ELECTRIC
- 52S AWNING - 2ND PATIO, ELECTRIC
- 265 CODES/STANDARDS-CSA/CMVSS
- 1B1 CODES/STANDARDS USA

FIRST USED	
13 D30A	
DO NOT SCALE DRAWING	
WIRING INSTL-BODY,12V	
SHEET 4	PART NO 181087 REV

FOR ELECTRICAL TORQUE SPECIFICATIONS SEE DWG NO. 128783-01-000

FOR ELECTRICAL CALLOUTS SEE DWG NO. 121339-01-000

NOTES:
 2 WITHOUT 52S
 1 FOR SWITCH ORIENTATION SEE DETAIL DK.



SATELLITE ELEVATION SENSOR
DETAIL FA

SPEAKER-CUBE
160867-01-CHT (2)
SCREW
G1208-12-170 (8)

LOS3
7

LSH-3

LO1-3
6

WASHER-PLASTIC
180671-02-CHT (4)

FOR ELECTRICAL TORQUE SPECIFICATIONS SEE DWG NO. 128783-01-000

FOR ELECTRICAL CALLOUTS SEE DWG NO. 121339-01-000

265 CODES/STANDARDS-CSA/CMVSS

1B1 CODES/STANDARDS USA

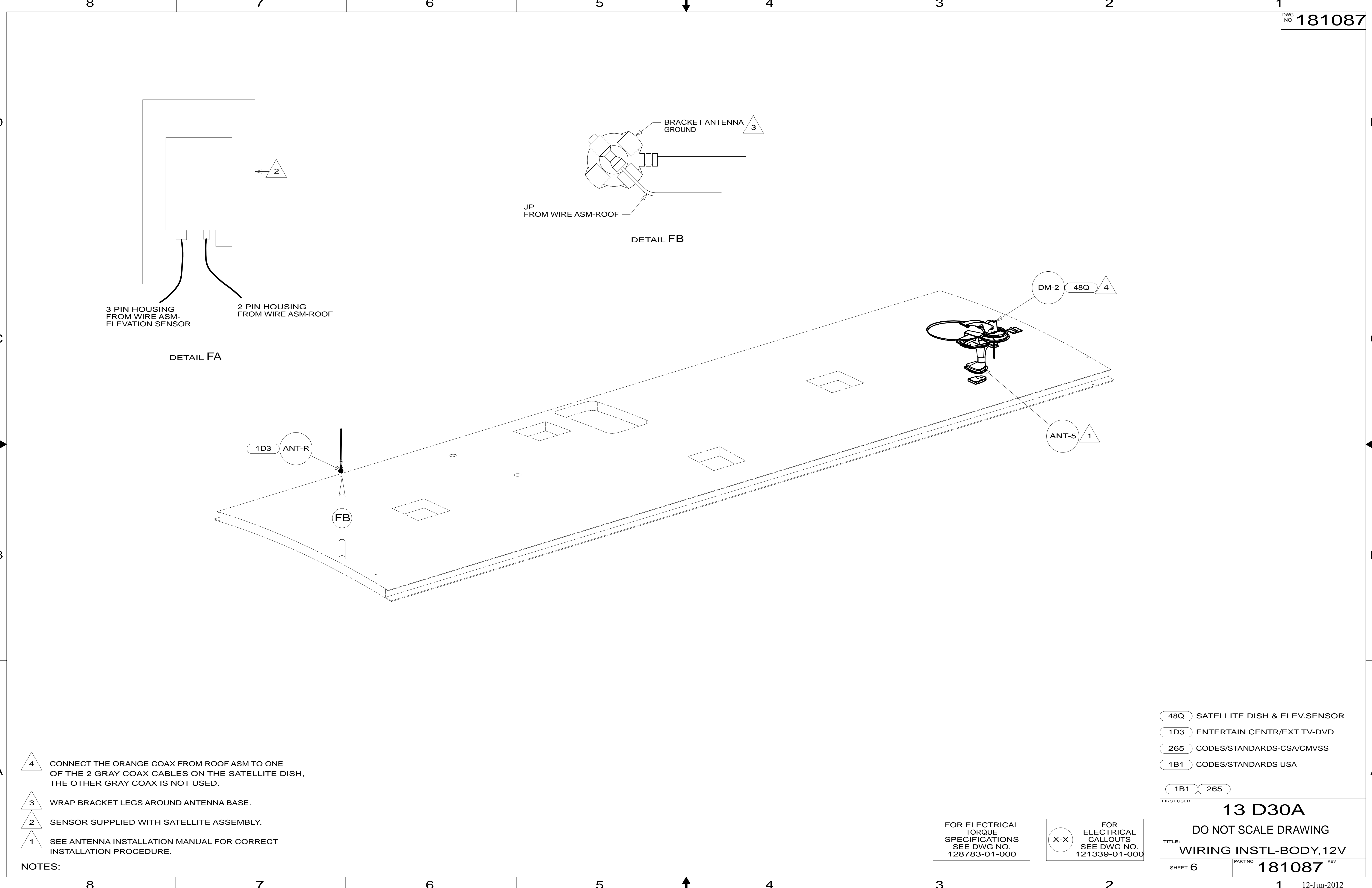
1B1 265

FIRST USED **13 D30A**

DO NOT SCALE DRAWING

TITLE: **WIRING INSTL-BODY, 12V**

SHEET 5 PART NO **181087** REV



3 PIN HOUSING FROM WIRE ASM-ELEVATION SENSOR

2 PIN HOUSING FROM WIRE ASM-ROOF

DETAIL FA

BRACKET ANTENNA GROUND

JP FROM WIRE ASM-ROOF

DETAIL FB

1D3 ANT-R

FB

DM-2 48Q

ANT-5 1

- NOTES:
- 4 CONNECT THE ORANGE COAX FROM ROOF ASM TO ONE OF THE 2 GRAY COAX CABLES ON THE SATELLITE DISH, THE OTHER GRAY COAX IS NOT USED.
 - 3 WRAP BRACKET LEGS AROUND ANTENNA BASE.
 - 2 SENSOR SUPPLIED WITH SATELLITE ASSEMBLY.
 - 1 SEE ANTENNA INSTALLATION MANUAL FOR CORRECT INSTALLATION PROCEDURE.

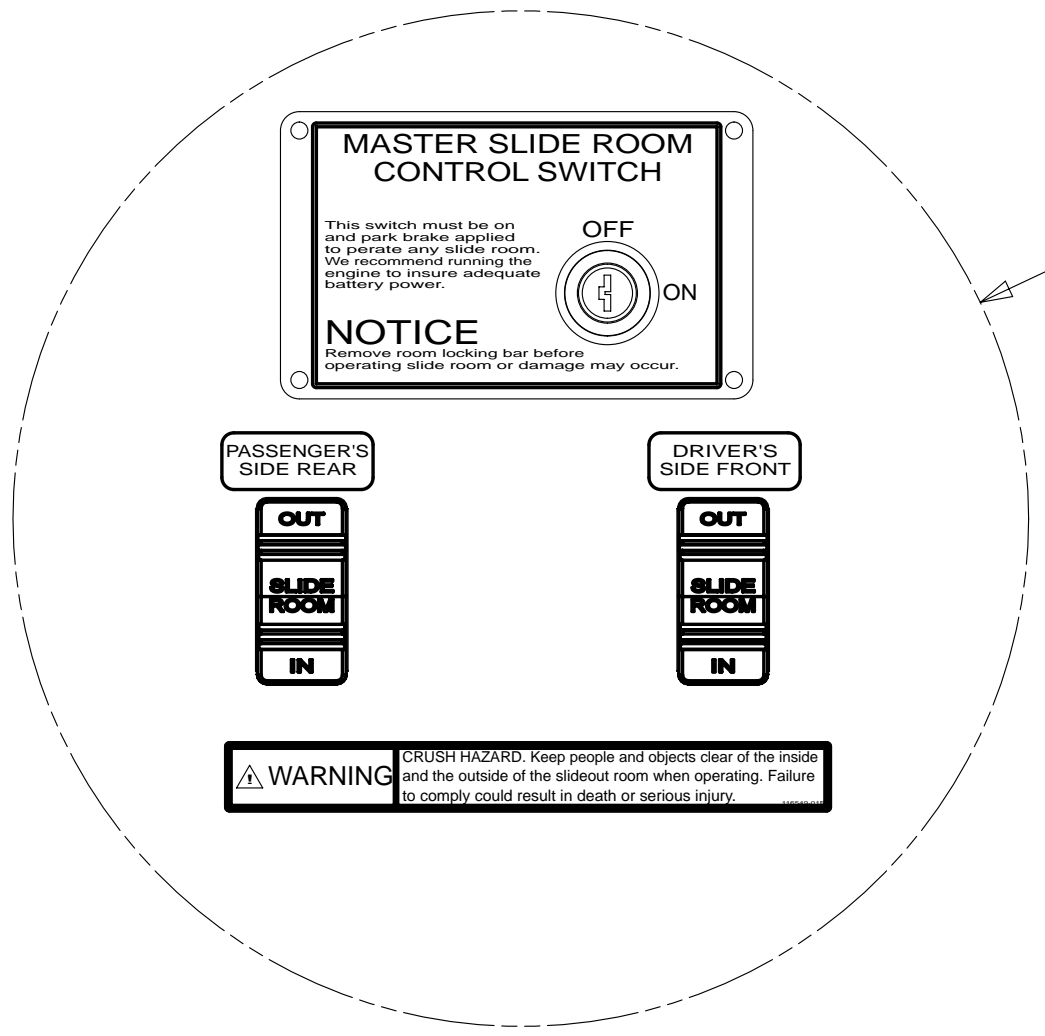
- 48Q SATELLITE DISH & ELEV.SENSOR
- 1D3 ENTERTAIN CENTR/EXT TV-DVD
- 265 CODES/STANDARDS-CSA/CMVSS
- 1B1 CODES/STANDARDS USA

FIRST USED	
13 D30A	
DO NOT SCALE DRAWING	
TITLE: WIRING INSTL-BODY,12V	
SHEET 6	PART NO 181087 REV

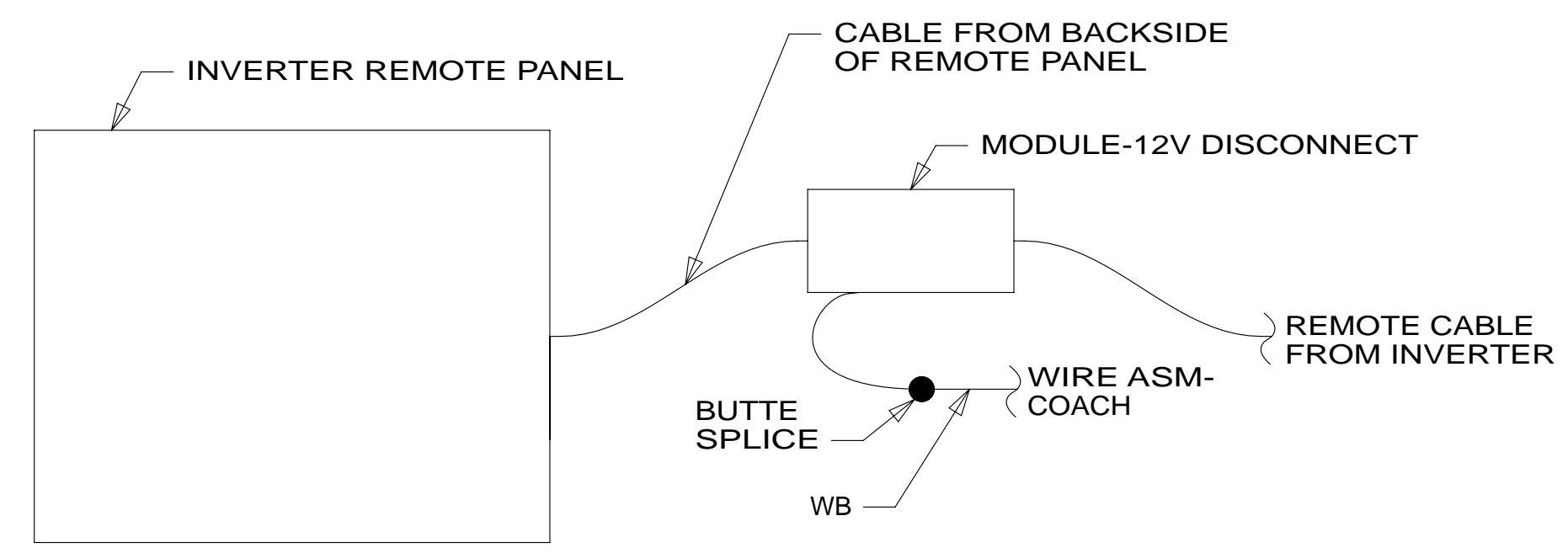
FOR ELECTRICAL TORQUE SPECIFICATIONS SEE DWG NO. 128783-01-000

FOR ELECTRICAL CALLOUTS SEE DWG NO. 121339-01-000

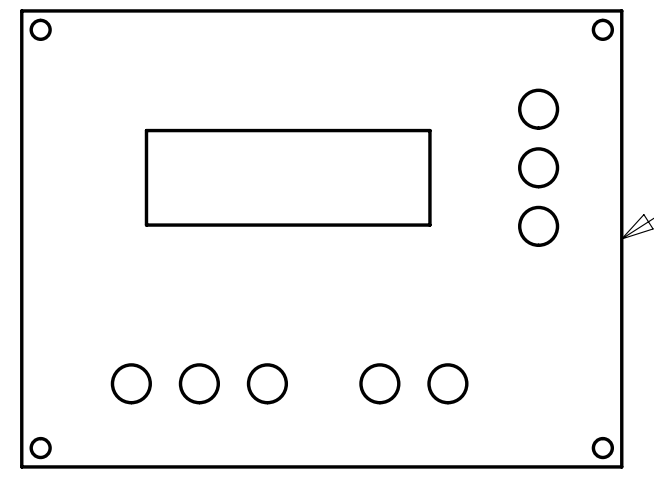
X-X



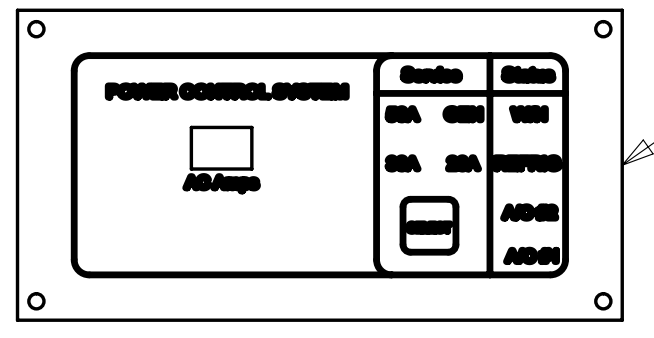
SWITCHES
DETAIL DJ



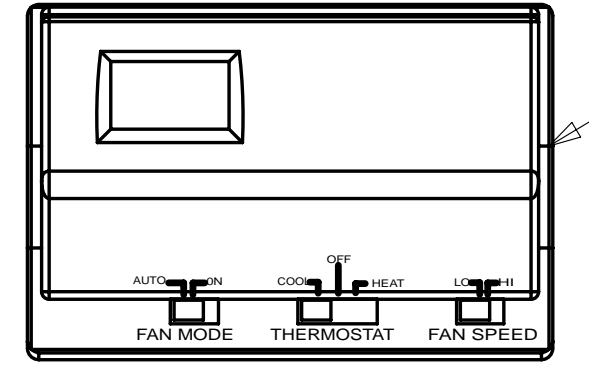
DETAIL GB 401



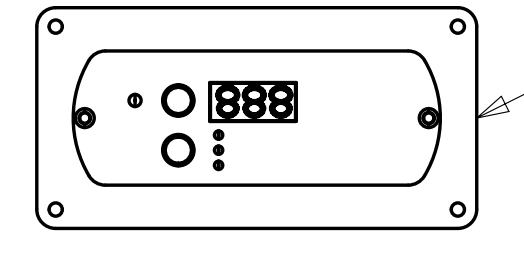
PANEL-MONITOR
175724-01-000
SCREW
G11-08-08U (4)



PANEL-MONITOR,EMS
174295-01-000

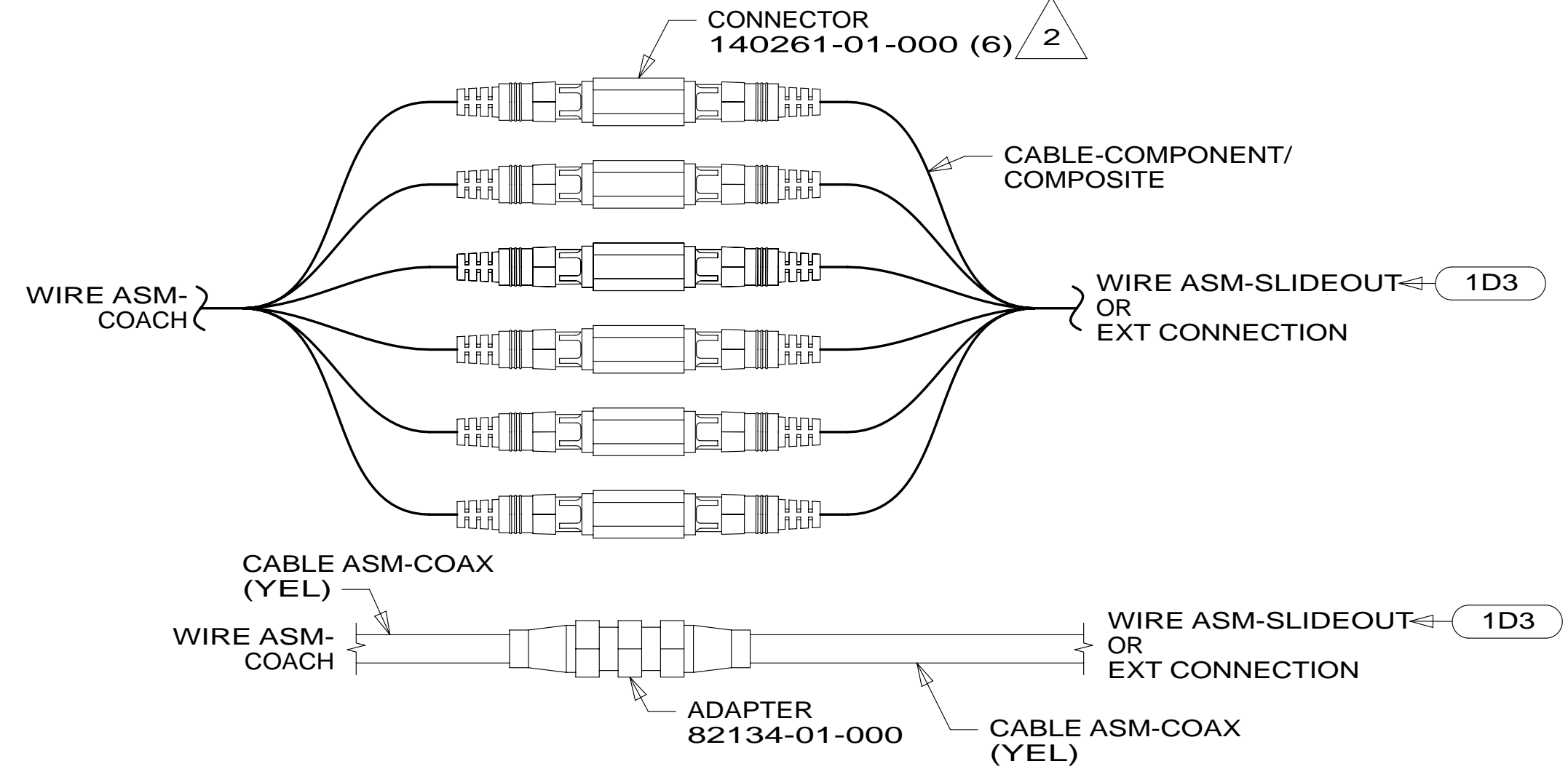


THERMOSTAT
135618-03-CHT (276)
135618-01-CHT (29R)
SCREW
G13-07-12B (2)
GASKET-THERMOSTAT
134588-09-000

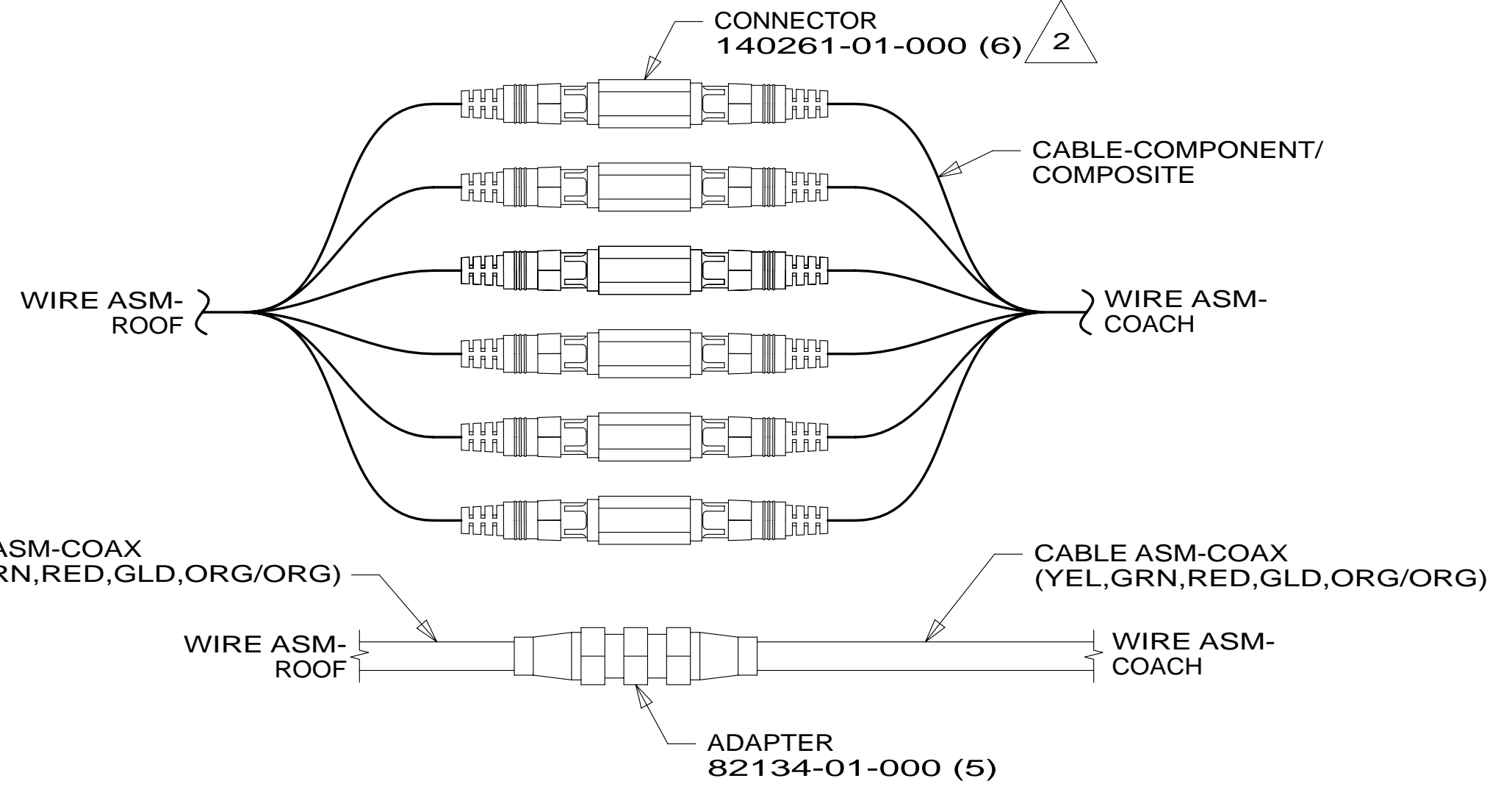


REMOTE PANEL-INVERTER
173337-02-000
MODULE 12V-DISCONNECT
173355-01-000
DETAIL GB

VIEW GA



DETAIL GC



DETAIL GD

- NOTES:
- 3 DATA CABLE FOR EMS IS MARKED WITH RED TAPE.
 - 2 WRAP BOTH ENDS WITH TAPE 8363-01-000 TO SECURE CONNECTION.
 - 1 INSTALL GASKET ON BACK SIDE OF ONE PLACE AFTER INTALLATION OF THERMOSTAT,MAKE SURE THAT THE GASKET COVERS AND SEALS THE THAT THE WIRES PASS THROUGH.

- 401 INVERTER-DC/AC, 1000 WATT
- 1D3 ENTERTAIN CENTR/EXT TV-DVD
- 29R AC HEAT PUMP-2 HI EFFICIENCY
- 276 A/C ROOF-HI EFF (2) W/EMS
- 265 CODES/STANDARDS-CSA/CMVSS
- 1B1 CODES/STANDARDS USA

FIRST USED		13 D30A	
DO NOT SCALE DRAWING			
TITLE: WIRING INSTL-BODY,12V			
SHEET 7	PART NO	181087	REV
		1	12-Jun-2012

FOR ELECTRICAL TORQUE SPECIFICATIONS SEE DWG NO. 128783-01-000

FOR ELECTRICAL CALLOUTS SEE DWG NO. 121339-01-000

TO SLIDEOUT MOTOR
CABLE MARKED
WITH GREEN TAPE

GROMMET
016188-11-000

TO SLIDEOUT MOTOR
CABLE MARKED WITH
YELLOW TAPE

212

2311

CLAMP
010495-02-000 (11)
SCREW
G11-10-16B (11)

SLIDEOUT WIRES FROM
WIRE ASM-CHASSIS

CLAMP
010497-03-000 (3)
SCREW
G11-10-16B (3)

WIRES ROUTE THRU HOLE
IN SLIDEOUT FLOOR HERE

UPPER FLOOR
(REF)

DETAIL HA
(FRONT LEFT)

TO SLIDEOUT MOTOR
CABLE MARKED
WITH BROWN TAPE

3641

1434

TO SLIDEOUT MOTOR
CABLE MARKED WITH
LIGHT YELLOW TAPE

CLAMP
010495-02-000 (22)
SCREW
G11-10-16B (22)

UPPER FLOOR
(REF)

DETAIL HB
(REAR RIGHT)

265 CODES/STANDARDS-CSA/CMVSS

1B1 CODES/STANDARDS USA

1B1 265

FIRST USED
13 D30A

DO NOT SCALE DRAWING

TITLE:
WIRING INSTL-BODY,12V

SHEET 8 PART NO **181087** REV

FOR ELECTRICAL
TORQUE
SPECIFICATIONS
SEE DWG NO.
128783-01-000

X-X
FOR
ELECTRICAL
CALLOUTS
SEE DWG NO.
121339-01-000