



**DANGER**

**Danger of electrical shock, burns or death.** Always remove all power sources before attempting any repair, service or diagnostic work. Power can be present from shore power, generator, inverter or battery. All power sources must be disabled and secured before performing any service.



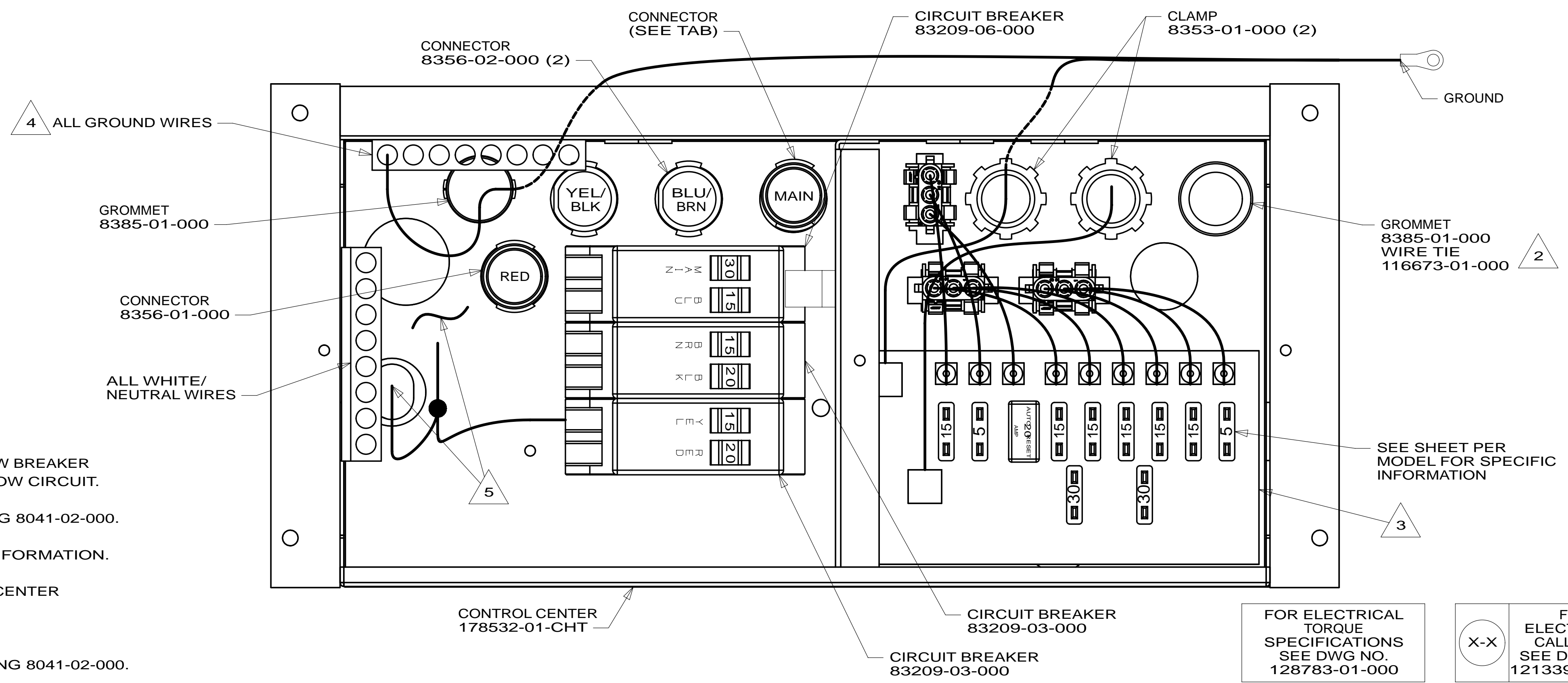
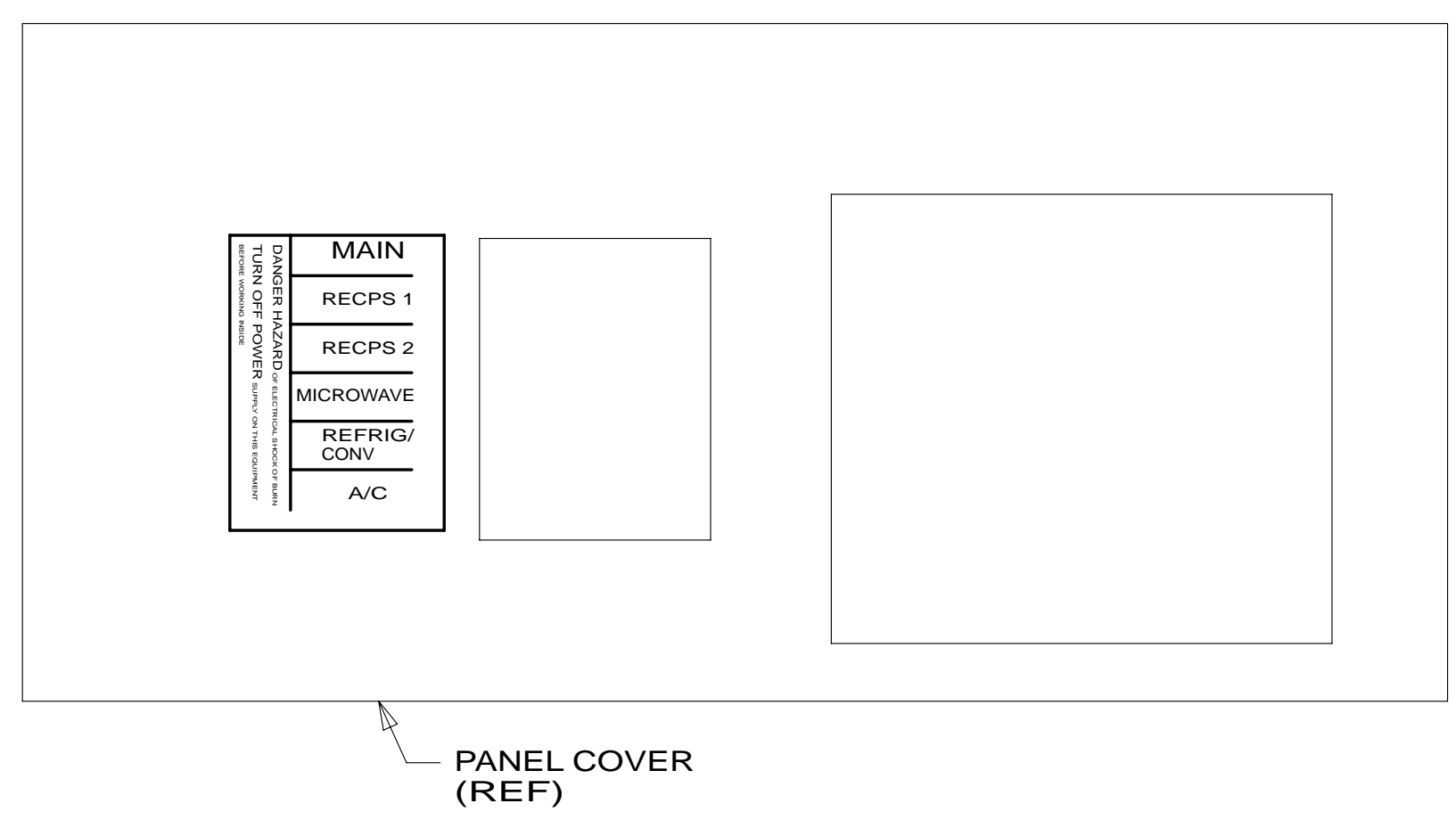
**CAUTION**

If you lack the skills, tools or equipment to perform diagnostic or repair work leave such work to an authorized Winnebago Industries dealer or other qualified shop.

DRAWING NO.	MODEL	SHEET	CONNECTOR
181052-01	524G	1,2,3	NONE
181052-02	524M	1,2,4	8356-02-000
181052-03	524J	1,2,5	8356-02-000
181052-04	524V	1,2,6	8356-02-000

		524M	524J	524G	524V	
GROUND	6-G	178545-01-015	178545-01-018	178545-01-020	178545-01-028	
WIRE ASM 110V US		181873-01-000	182085-01-000	181650-01-000	181073-01-000	
WIRE ASM 110V CA		181873-02-000	182085-02-000	181650-02-000	181073-02-000	
GENERATOR CABLE ASM	UL	164957-02-042	164957-07-030	164957-02-042	164957-02-042	33F
	CA	164957-04-042	164957-08-030	164957-04-042	164957-04-042	33F
MODULE-ALS GROUND	8-G	136145-05-010	136145-05-015	136145-05-016	136145-05-030	
THROW IN WIRE #1	UL		136131-05-015 $\triangle$ 6	136131-19-024 $\triangle$ 6		
	CA		136134-05-015 $\triangle$ 6	136134-19-024 $\triangle$ 6		
THROW IN WIRE #2	UL		136131-19-040 $\triangle$ 6 1L9	136131-19-003 $\triangle$ 6 $\triangle$ 8	136131-19-003 $\triangle$ 6 $\triangle$ 8	
	CA		136134-19-040 $\triangle$ 6 1L9	136134-19-003 $\triangle$ 6 $\triangle$ 8	136134-19-003 $\triangle$ 6 $\triangle$ 8	
THROW IN WIRE #3	UL			136131-19-006 $\triangle$ 6 $\triangle$ 8	136131-19-009 $\triangle$ 6 $\triangle$ 8	
	CA			136134-19-006 $\triangle$ 6 $\triangle$ 8	136134-19-009 $\triangle$ 6 $\triangle$ 8	
THROW IN WIRE #4	UL	136131-03-006 $\triangle$ 6	136131-03-006 $\triangle$ 6	136131-03-006 $\triangle$ 6	136131-03-006 $\triangle$ 6	401
	CA	136134-03-006 $\triangle$ 6	136134-03-006 $\triangle$ 6	136134-03-006 $\triangle$ 6	136134-03-006 $\triangle$ 6	401
THROW IN WIRE #5	UL	136131-19-004 $\triangle$ 6	136131-19-004 $\triangle$ 6	136131-19-004 $\triangle$ 6	136131-19-004 $\triangle$ 6	401
	CA	136134-19-004 $\triangle$ 6	136134-19-004 $\triangle$ 6	136134-19-004 $\triangle$ 6	136134-19-004 $\triangle$ 6	401
SLIDEOUT WIRE #1				136151-19-013 $\triangle$ 7		
SLIDEOUT WIRE #2		136151-19-042 $\triangle$ 7		136151-19-035 $\triangle$ 7 $\triangle$ 8	136151-19-035 $\triangle$ 7 $\triangle$ 8	

RELEASE	REV/DATE	DWG NO	181052
REV ZONE	REVISION RECORD	DATE	DFT-ORIG



- $\triangle$  8 NOT USED WITH 22K
  - $\triangle$  7 FOR CONNECTOR INSTALLATION SE DETAIL BC.
  - $\triangle$  6 FOR CONNECTOR INSTALLTION SEE DETAIL BB.
  - $\triangle$  5 CONNECT CONVERTER POWER CIRCUIT INTO YELLOW BREAKER AND USE SUPPLIED WIRE NUT TO CONNECT YELLOW CIRCUIT.
  - $\triangle$  4 ALL GROUND WIRE TO BE COVERED WITH TUBING 8041-02-000.
  - $\triangle$  3 SEE WIRING INSTL-BODY,12V FOR ADDITIONAL INFORMATION.
  - $\triangle$  2 INSERT GROMMET FROM THE INSIDE OF CONTROL CENTER SECURE WIRES TO BACKSIDE OF LOAD CENTER WITH WIRE TIE.
1. ALL GROUND WIRES TO BE COVERED WITH TUBING 8041-02-000.

- 401 INVERTER-DC/AC, 1000 WATT
- 22K DINETTE L-SHAPED-SECTIONAL
- 41R SOFA/SLEEPER
- 41Q SOFA/SLEEPER-ULTRALEATHER
- 1L9 ENTERTAINMENT CENTER-CABOVER
- 52G GEN-3.6KW ONAN LP MICROQUIET
- 33F GEN-3.5 KW ONAN DIESEL
- 265 CODES/STANDARDS-CSA/CMVSS
- 1B1 CODES/STANDARDS USA

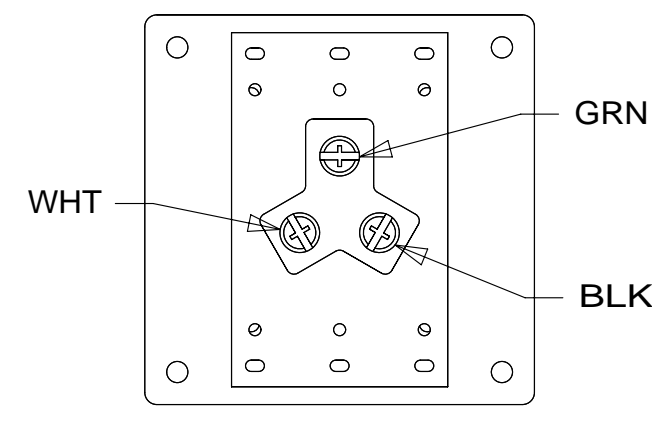
**WINNEBAGO** COPYRIGHT 2011 WINNEBAGO INDUSTRIES, INC.

DFT-ORIG	ORIG. DATE
CHKR	ALL DIMENSIONS ARE IN MILLIMETERS
P.E.	FIRST USED
M.E.	13 500-SERIES
DSNR	MATERIAL:
UNSPECIFIED TOLERANCES ARE:	
WHOLE DIM (X)	: 3
ONE-PLACE (X.X)	: 1.5
TWO-PLACE (X.XX)	: 0.50
ANGLE	: 1°
THIRD ANGLE PROJECTION	
DO NOT SCALE DRAWING	REFER TO ES0018 FOR FASTENER TIGHTENING GUIDELINES
TITLE: <b>LOAD CENTER/ATS ASM</b>	
SHEET 1 OF 6	PART NO <b>181052</b> REV

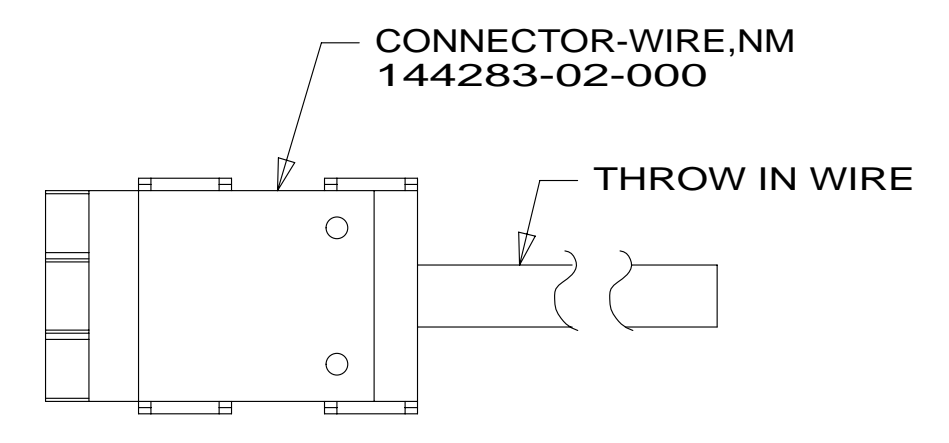
REF: 1 20-Aug-2012

FOR ELECTRICAL TORQUE SPECIFICATIONS SEE DWG NO. 128783-01-000

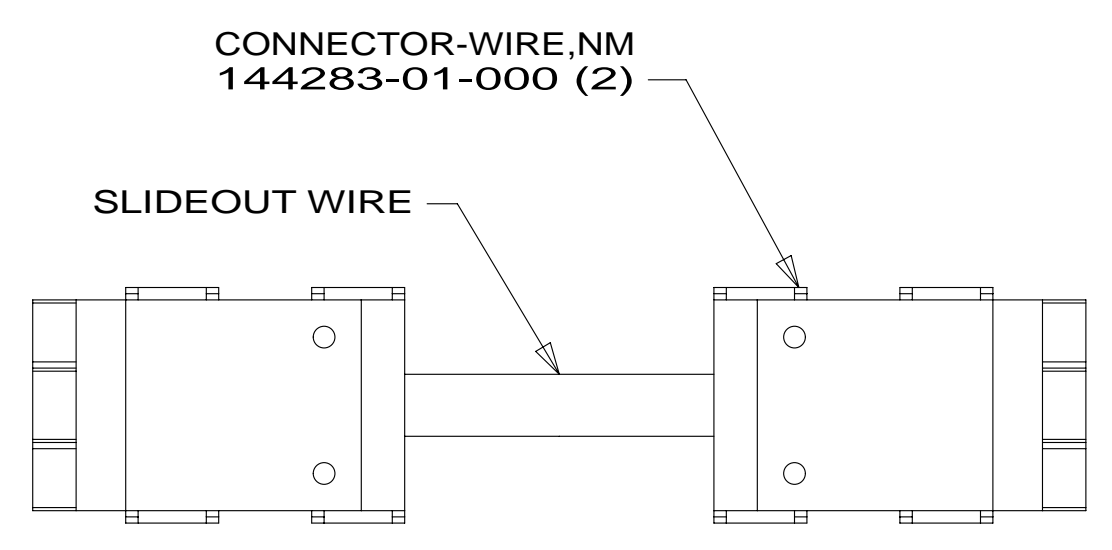
FOR ELECTRICAL CALLOUTS SEE DWG NO. 121339-01-000



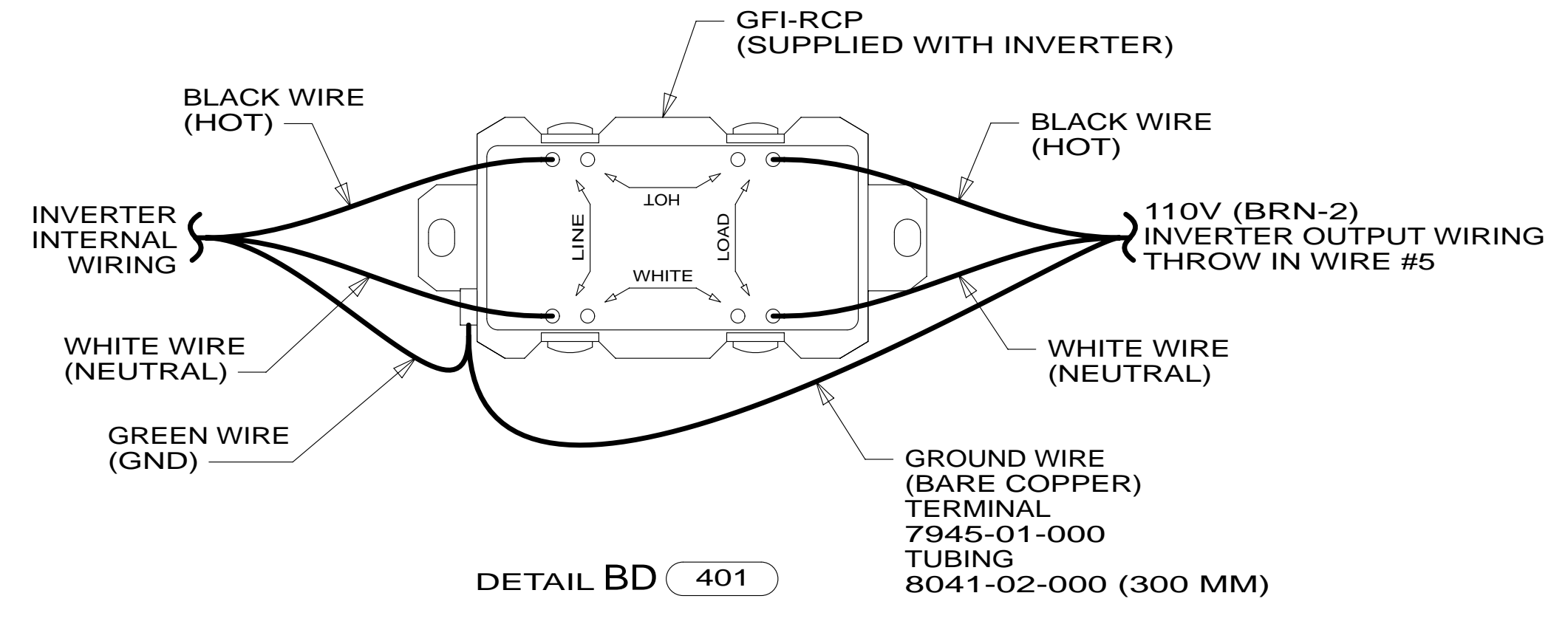
DETAIL BA  
(BACK VIEW)



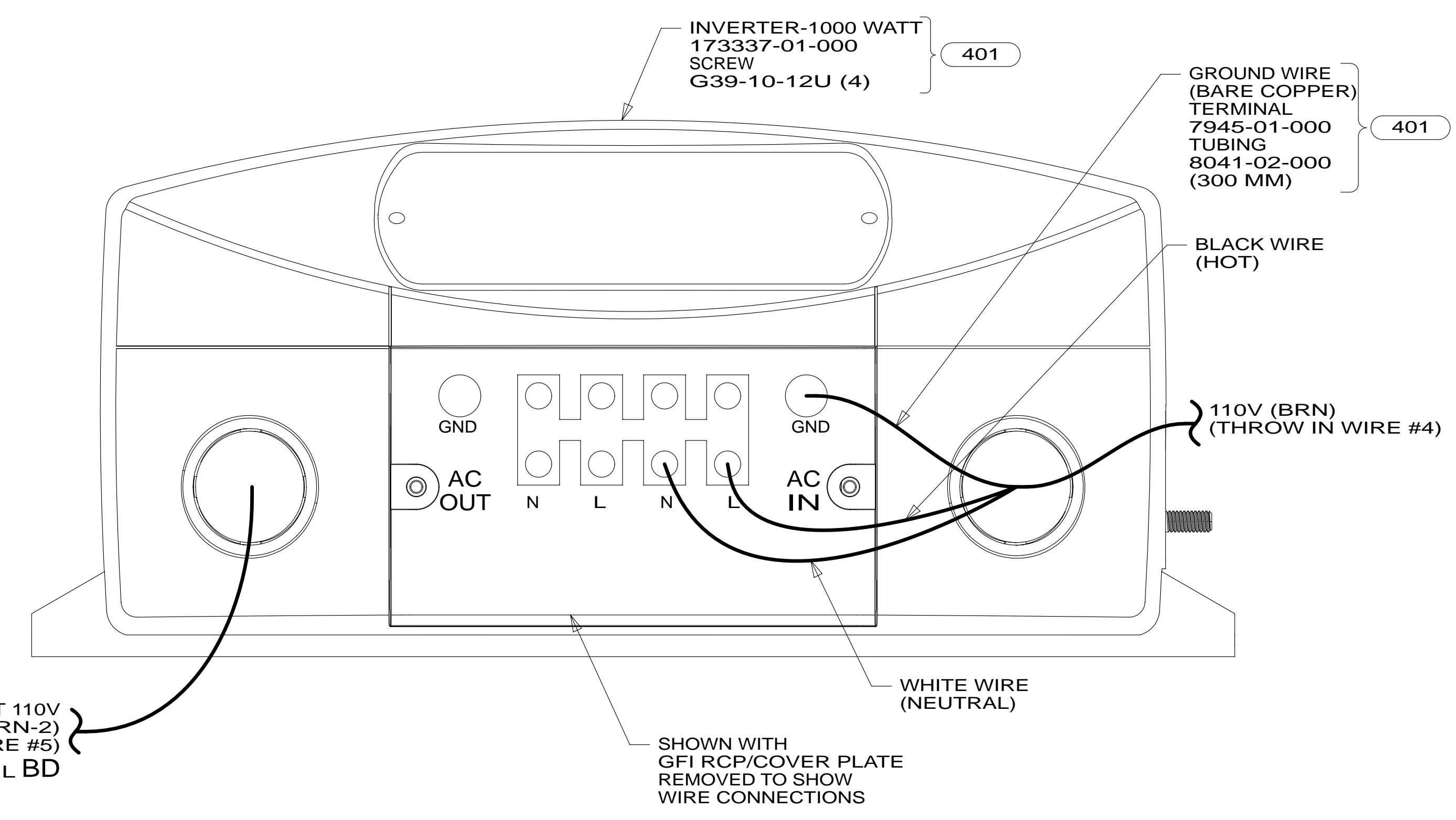
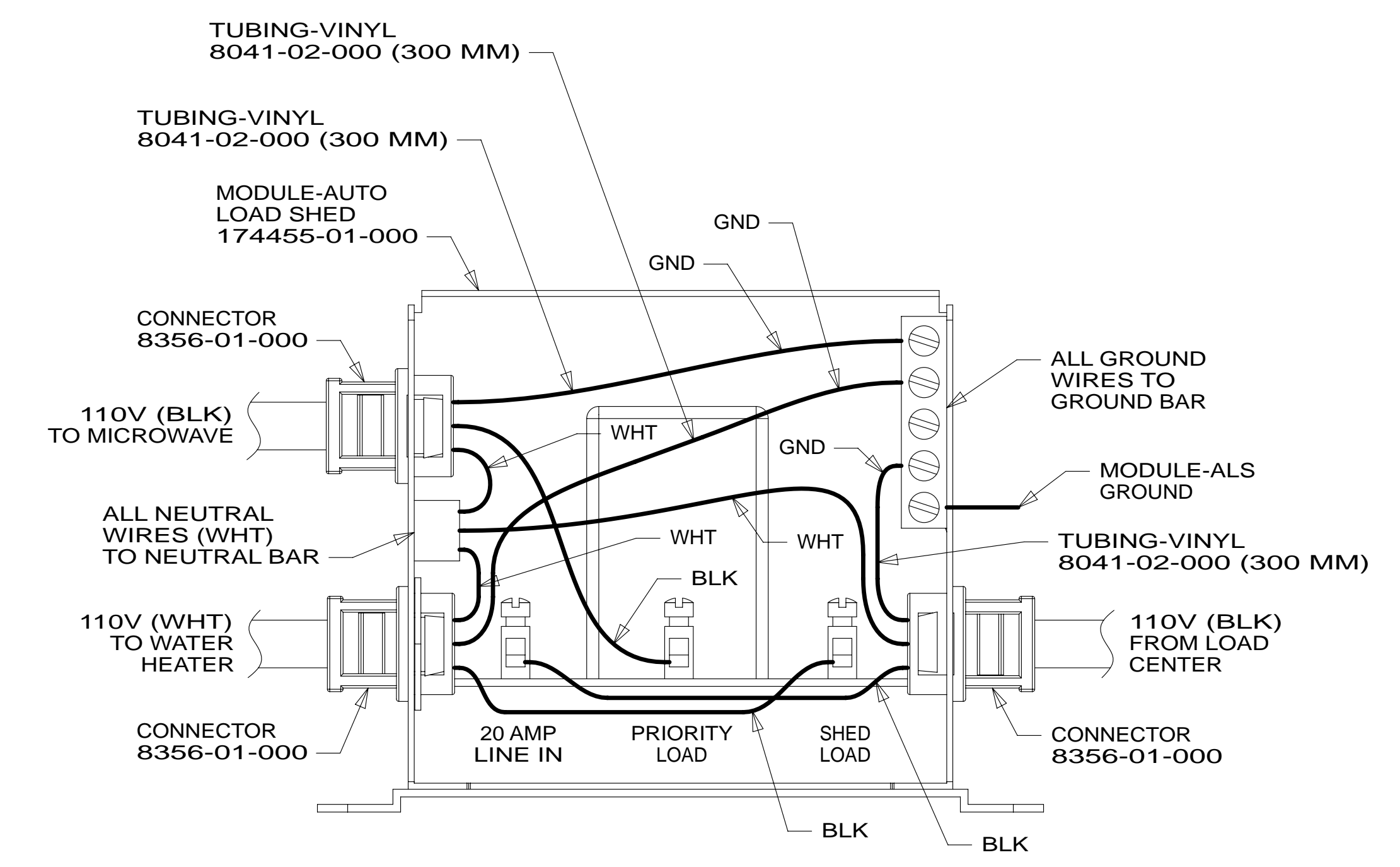
DETAIL BB



DETAIL BC



DETAIL BD 401



INVERTER OUTPUT 110V (BRN-2) (THROW IN WIRE #5)  
DETAIL BD

SHOWN WITH GFI RCP/COVER PLATE REMOVED TO SHOW WIRE CONNECTIONS

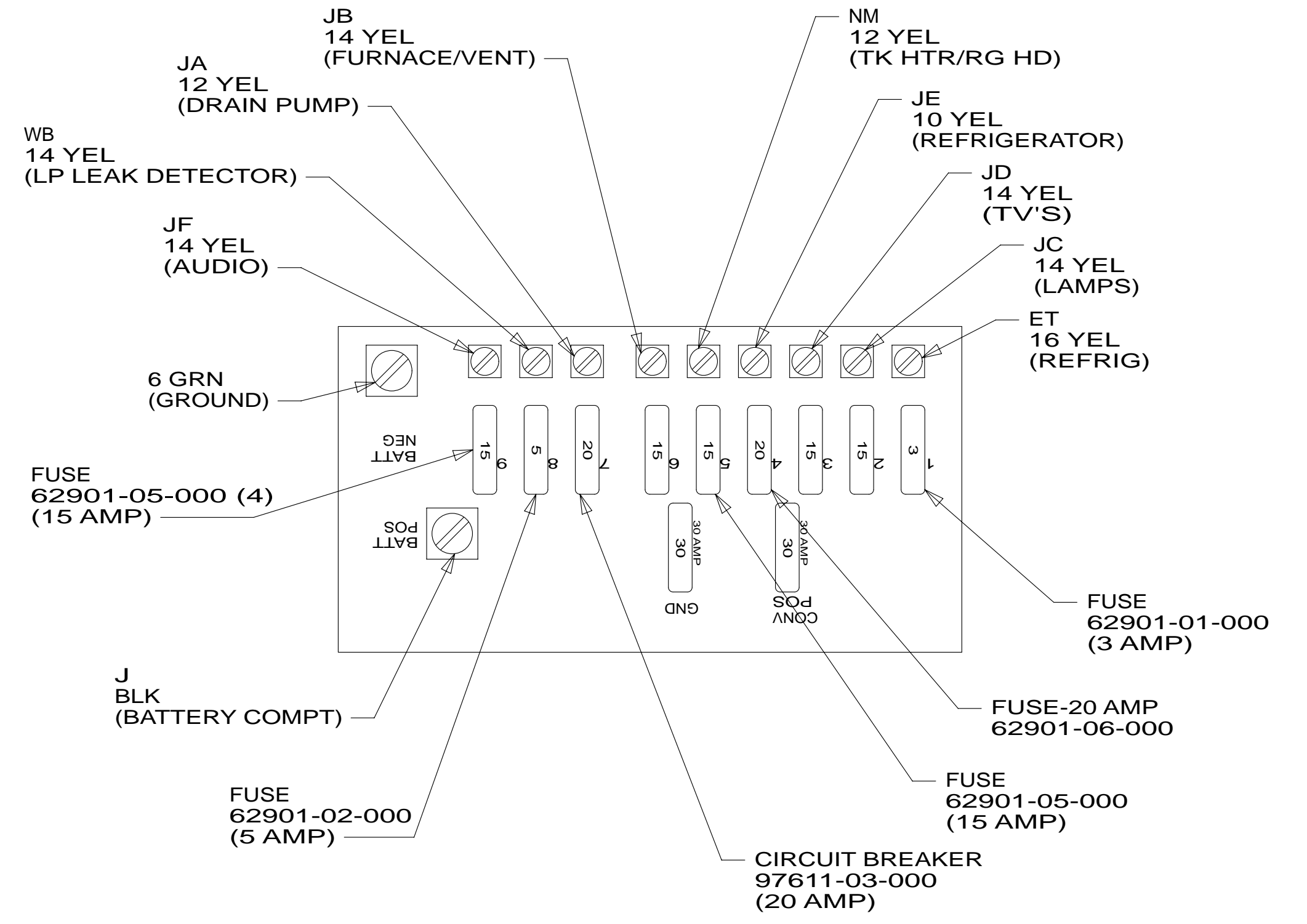
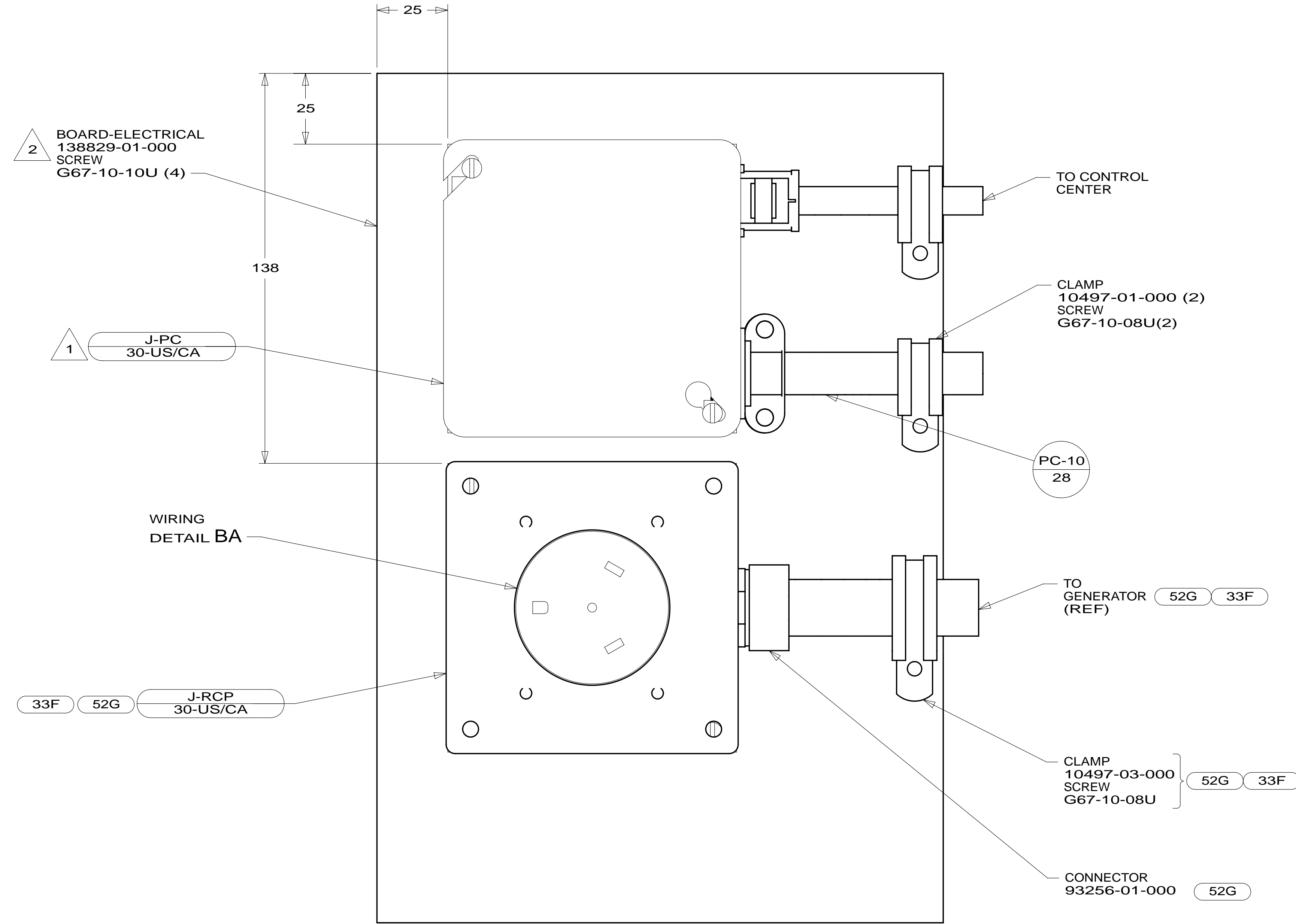
- 401 INVERTER-DC/AC, 1000 WATT
- 265 CODES/STANDARDS-CSA/CMVSS
- 1B1 CODES/STANDARDS USA

1B1 265

FIRST USED	
<b>13 500-SERIES</b>	
DO NOT SCALE DRAWING	
TITLE: <b>LOAD CENTER/ATS ASM</b>	
SHEET 2	PART NO <b>181052</b> REV

FOR ELECTRICAL TORQUE SPECIFICATIONS SEE DWG NO. 128783-01-000

X-X FOR ELECTRICAL CALLOUTS SEE DWG NO. 121339-01-000



- 33F GEN-3.5 KW ONAN DIESEL
- 52G GEN-3.6KW ONAN LP MICROQUIET
- 265 CODES/STANDARDS-CSA/CMVSS
- 1B1 CODES/STANDARDS USA

- 1B1 265

FIRST USED

## 13 500-SERIES

DO NOT SCALE DRAWING

TITLE: LOAD CENTER/ATS ASM

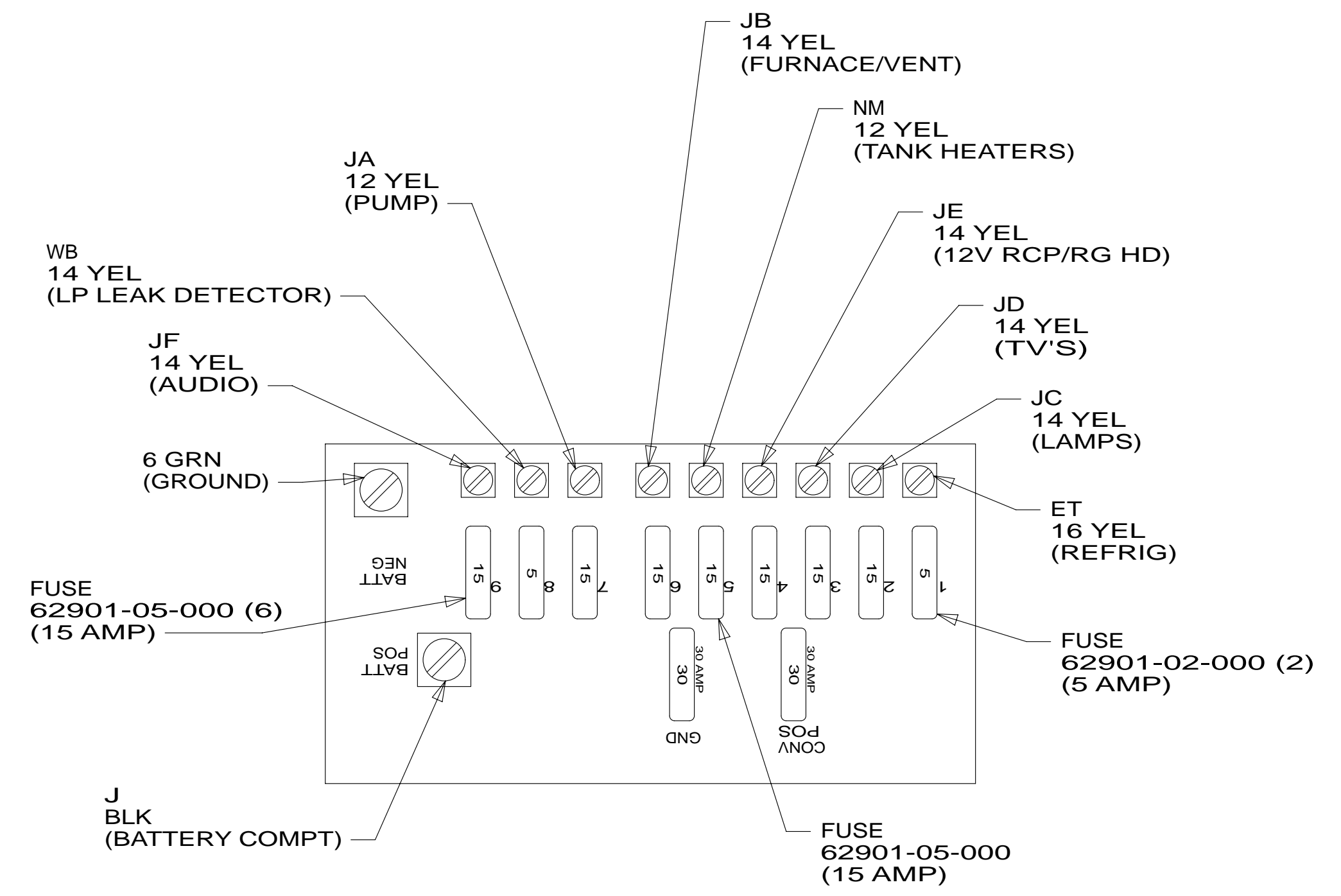
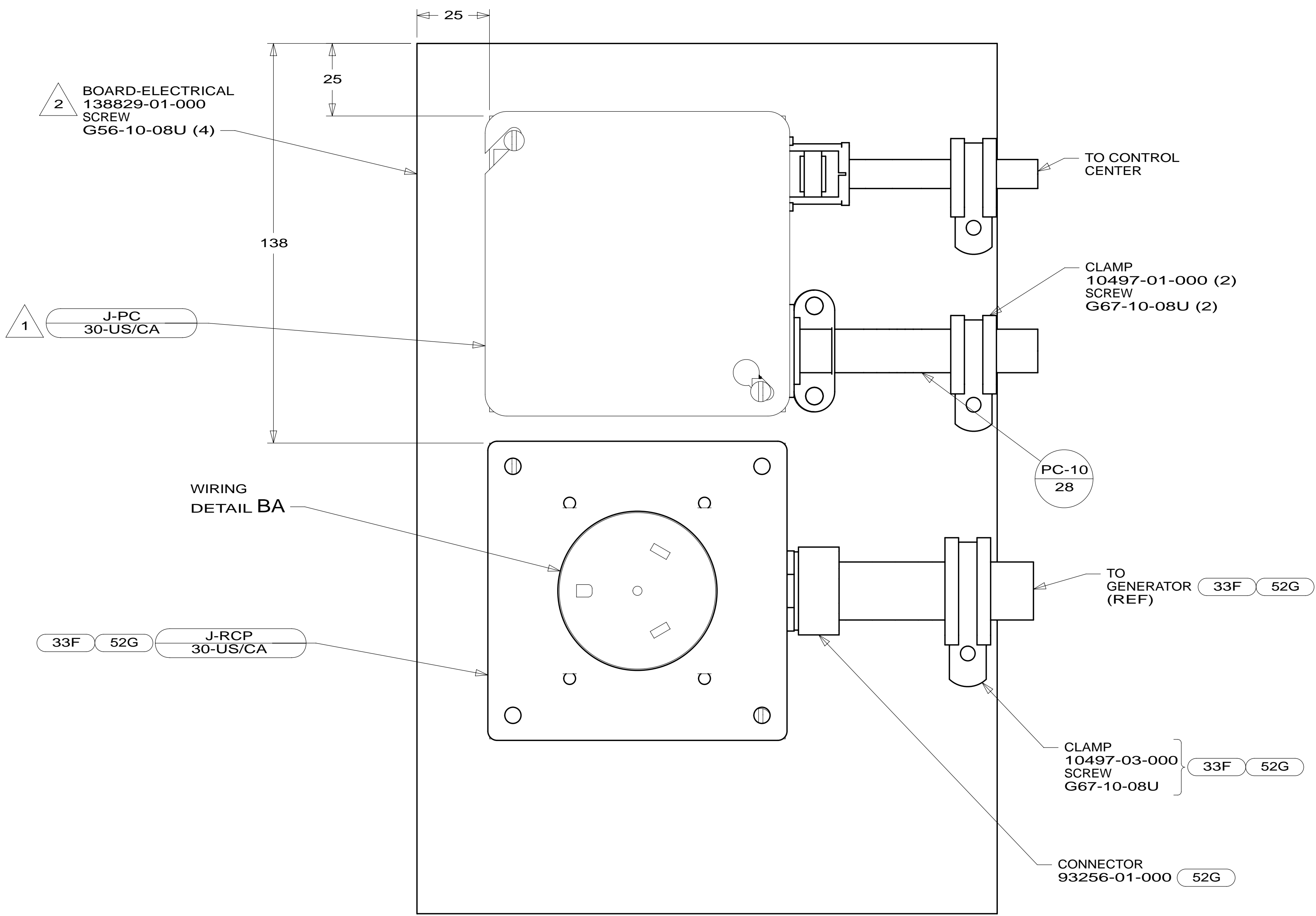
SHEET 3 PART NO 181052 REV

20-Aug-2012

FOR ELECTRICAL TORQUE SPECIFICATIONS SEE DWG NO. 128783-01-000

X-X FOR ELECTRICAL CALLOUTS SEE DWG NO. 121339-01-000

NOTES:  
 1 CONNECT BLK TO BLK, WHT TO WHT, AND GRNDS TO GRNDS.



NOTES:  
 2 SCREW INTO BACKSIDE OF BOARD THRU PANEL DURING INSTALLATION.  
 1 CONNECT BLK TO BLK, WHT TO WHT, AND GRNDS TO GRNDS.

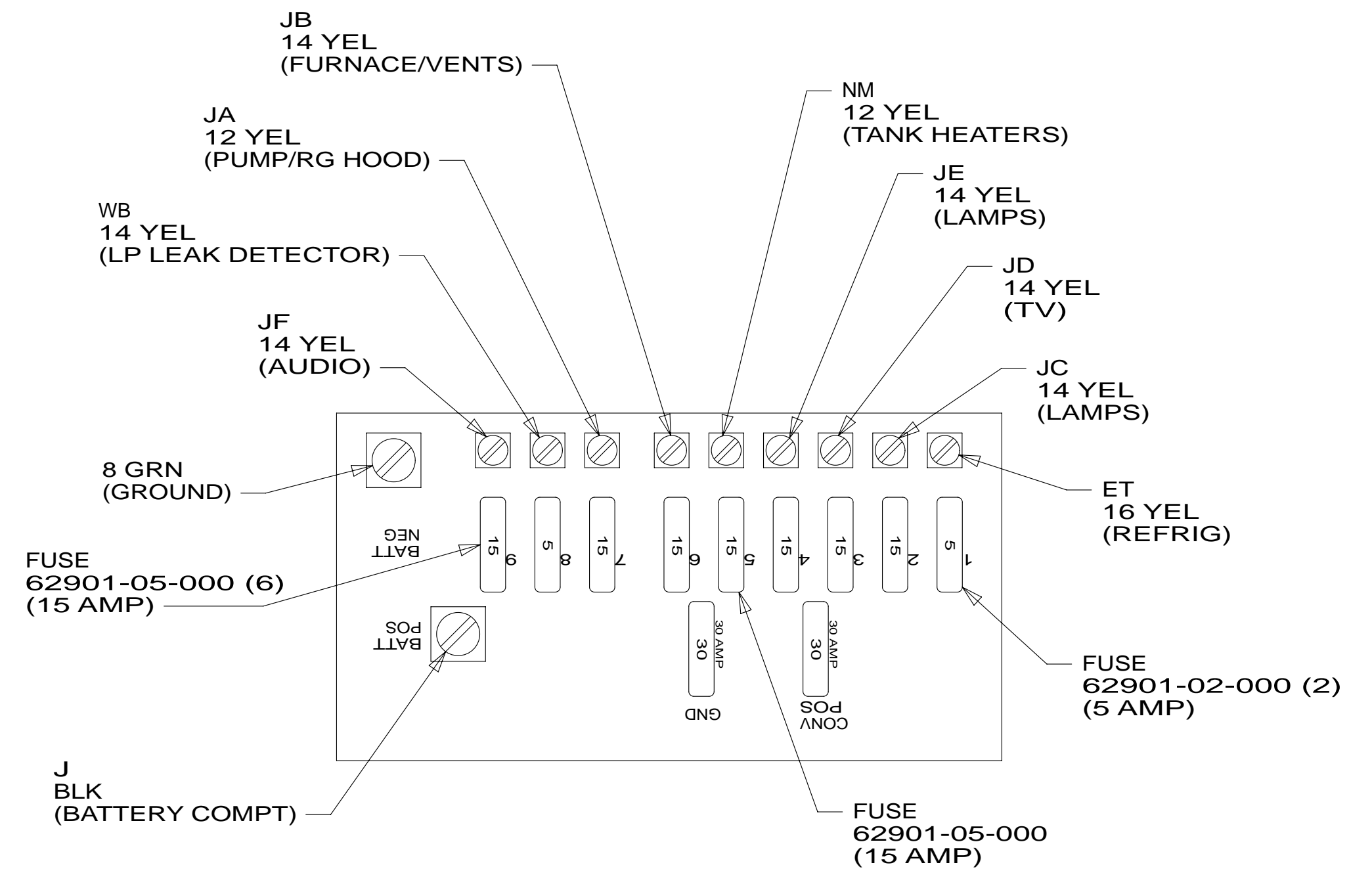
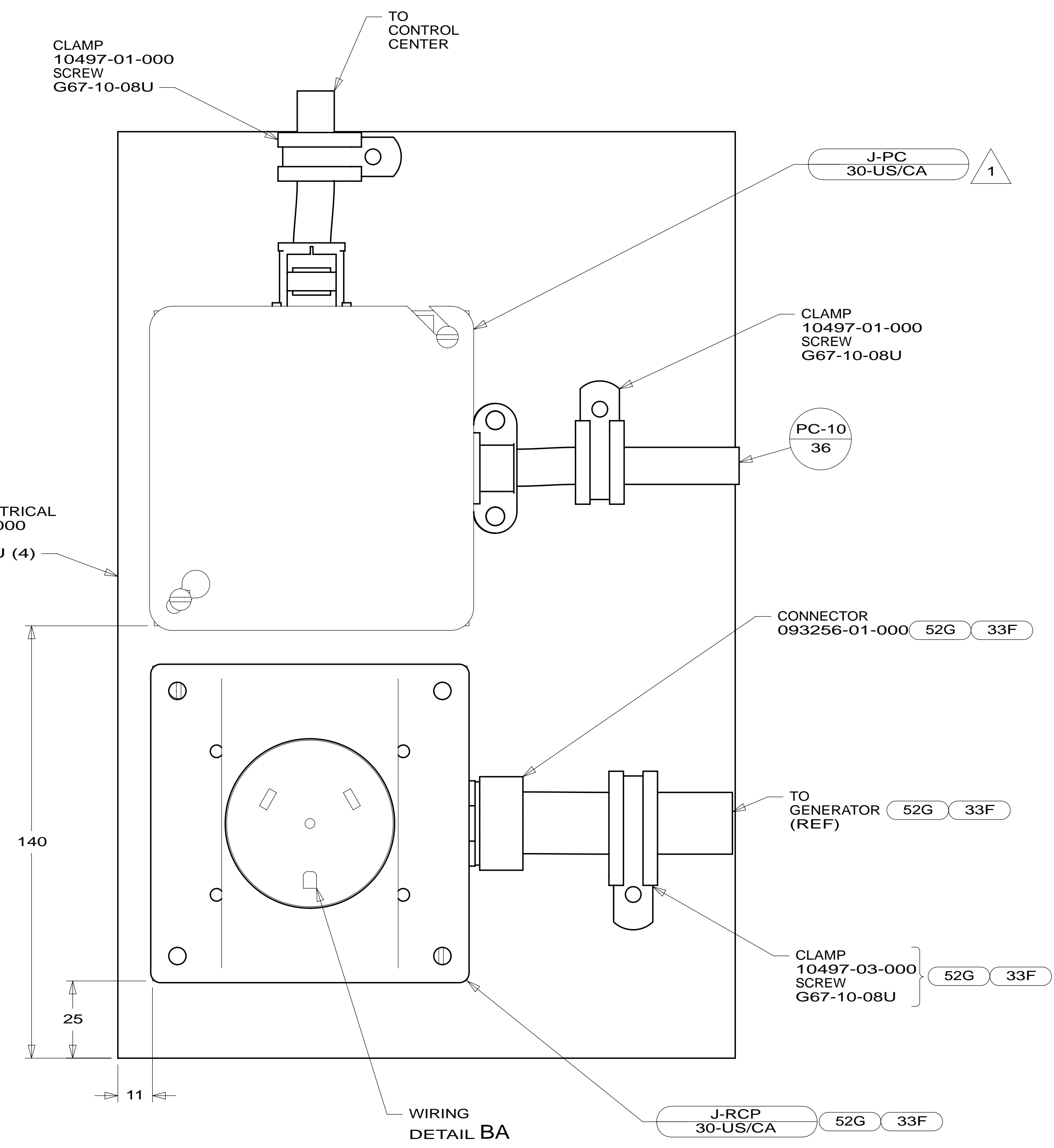
FOR ELECTRICAL TORQUE SPECIFICATIONS SEE DWG NO. 128783-01-000

FOR ELECTRICAL CALLOUTS SEE DWG NO. 121339-01-000

- 33F GEN-3.5 KW ONAN DIESEL
- 52G GEN-3.6KW ONAN LP MICROQUIET
- 265 CODES/STANDARDS-CSA/CMVSS
- 1B1 CODES/STANDARDS USA

1B1 265

FIRST USED  
**13 500-SERIES**  
 DO NOT SCALE DRAWING  
 TITLE: **LOAD CENTER/ATS ASM**  
 SHEET 4 PART NO **181052** REV



NOTES:

1 CONNECT BLK TO BLK, WHT TO WHT, AND GRNDS TO GRNDS.

FOR ELECTRICAL TORQUE SPECIFICATIONS SEE DWG NO. 128783-01-000

FOR ELECTRICAL CALLOUTS SEE DWG NO. 121339-01-000

- 33F GEN-3.5 KW ONAN DIESEL
- 52G GEN-3.6KW ONAN LP MICROQUIET
- 265 CODES/STANDARDS-CSA/CMVSS
- 1B1 CODES/STANDARDS USA

1B1 265

FIRST USED

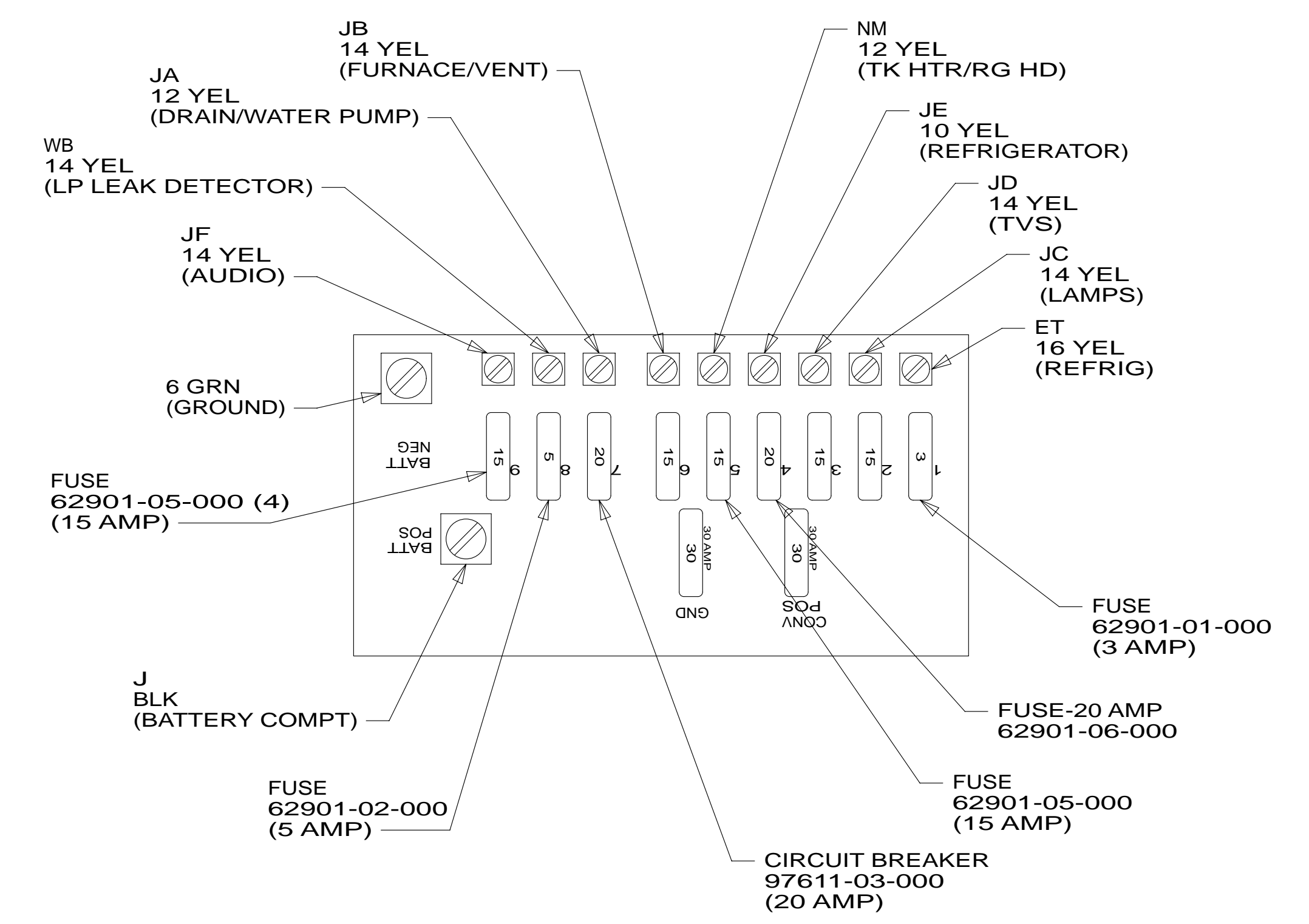
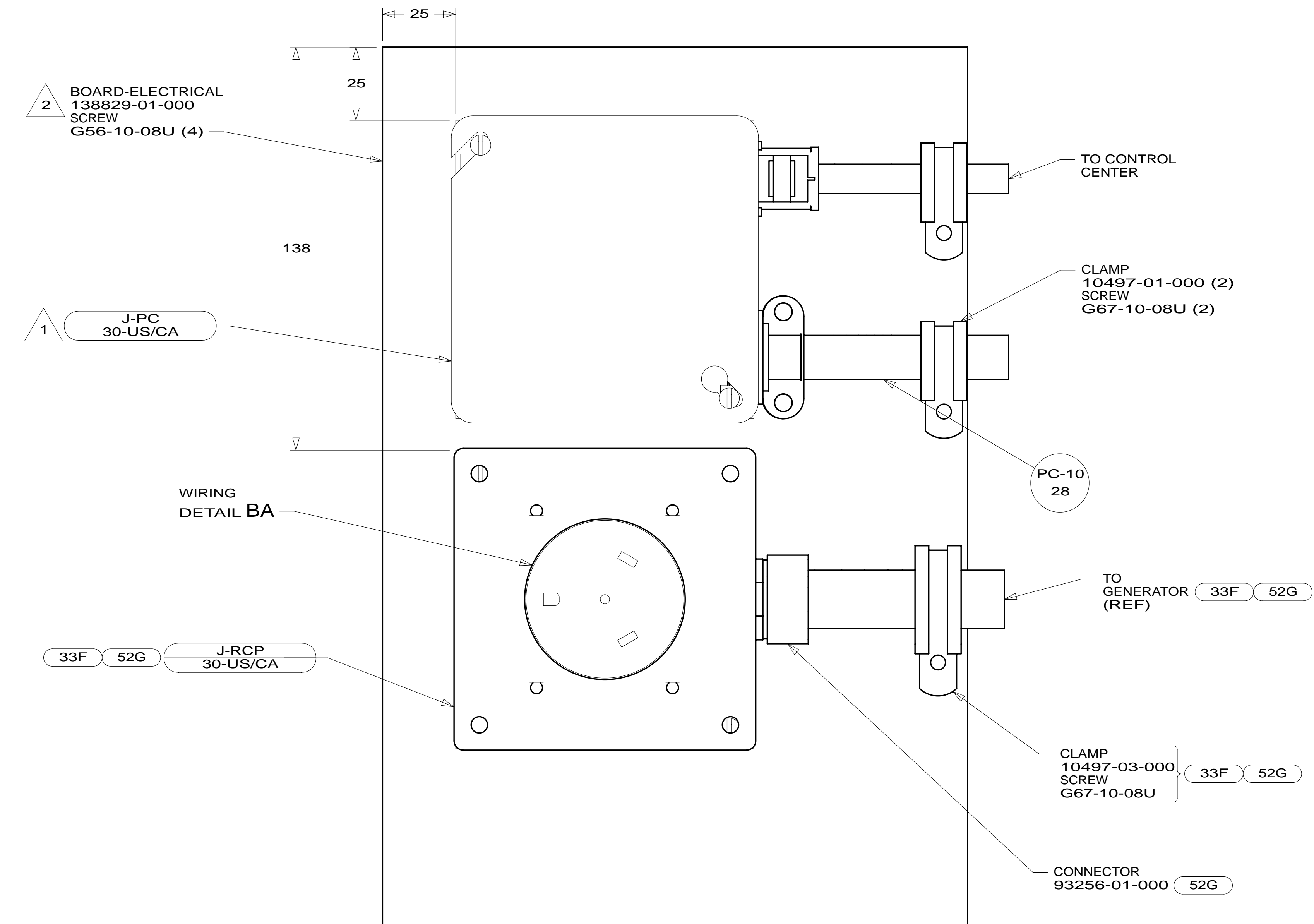
**13 500-SERIES**

DO NOT SCALE DRAWING

TITLE: **LOAD CENTER/ATS ASM**

SHEET 5 PART NO **181052** REV

20-Aug-2012



NOTES:  
 2 SCREW INTO BACKSIDE OF BOARD THRU PANEL DURING INSTALLATION.  
 1 CONNECT BLK TO BLK, WHT TO WHT, AND GRNDS TO GRNDS.

FOR ELECTRICAL  
TORQUE  
SPECIFICATIONS  
SEE DWG NO.  
128783-01-000

FOR  
ELECTRICAL  
CALLOUTS  
SEE DWG NO.  
121339-01-000

- 33F GEN-3.5 KW ONAN DIESEL
- 52G GEN-3.6KW ONAN LP MICROQUIET
- 265 CODES/STANDARDS-CSA/CMVSS
- 1B1 CODES/STANDARDS USA

1B1 265

FIRST USED

**13 500-SERIES**

DO NOT SCALE DRAWING

TITLE: **LOAD CENTER/ATS ASM**

SHEET 6 PART NO **181052** REV

20-Aug-2012