



DANGER

Danger of electrical shock, burns or death. Always remove all power sources before attempting any repair, service or diagnostic work. Power can be present from shore power, generator, inverter or battery. All power sources must be disabled and secured before performing any service.



CAUTION

If you lack the skills, tools or equipment to perform diagnostic or repair work leave such work to an authorized Winnebago Industries dealer or other qualified shop.

8	7	6	5	4	3	2	1
DRAWING NO.	MODEL						
180920-01	524G						
180920-02	524J						
180920-03	524M						
180920-04	524V						

RELEASE	REV/DATE	DWG NO	180920
REV ZONE	REVISION RECORD	DATE	DFT-ORIG

	524M	524J	524G	524V
CABLE ASM-STARTER (RED)	141415-37-013	141415-37-013	141415-37-013	141415-37-013
CABLE ASM-COACH BATTERY (YEL)	141415-52-043	141415-52-043	141415-52-043	141415-52-043
CABLE ASM-COACH BATTERY GND (BLK)	133567-12-006	133567-12-006	133567-12-006	133567-12-006
CABLE ASM-GENERATOR (GRN) (321)	141415-42-075	141415-42-075	141415-42-077	141415-42-077
CABLE ASM-GENERATOR GND (BLK) (321)	133566-12-017	133566-12-017	133566-12-017	133566-12-017
CABLE ASM-GENERATOR (GRN) (33F) OR (323)	141416-42-070	141416-42-070	141416-42-070	141416-42-070
CABLE ASM-GENERATOR GND (BLK) (33F) OR (323)	133567-12-011	133567-12-011	133567-12-011	133567-12-011
CABLE ASM-INVERTOR FUSE (ORG) (401)	141415-62-003	141415-62-003	141415-62-003	141415-62-003
CABLE ASM-INVERTOR (ORG) (401)	141415-62-024	141415-62-024	141415-62-024	141415-62-024
CABLE ASM-INVERTOR BND (BLK) (401)	133566-12-011	133566-12-011	133566-12-011	133566-12-011

- (401) INVERTER-DC/AC, 1000 WATT
- (33F) GEN-3.2 KW ONAN DIESEL
- (323) GENERATOR PREP KIT - DIESEL
- (321) GENERATOR PREP KIT
- (265) CODES/STANDARDS-CSA/CMVSS
- (1B1) CODES/STANDARDS USA

WINNEBAGO

COPYRIGHT 2013 WINNEBAGO INDUSTRIES, INC.

DFT-ORIG	ORIG. DATE
CHKR	ALL DIMENSIONS ARE IN MILLIMETERS
P.E.	
M.E.	FIRST USED
DSNR	13 500-SERIES

UNSPECIFIED TOLERANCES ARE:

WHOLE DIM (X)	:	MATERIAL:
ONE-PLACE (X.X)	:	
TWO-PLACE (X.XX)	:	
ANGLE	:	

THIRD ANGLE PROJECTION

DO NOT SCALE DRAWING REFER TO ES0018 FOR FASTENER TIGHTENING GUIDELINES

TITLE: BATTERY INSTL

SHEET 1 OF 2 PART NO 180920 REV

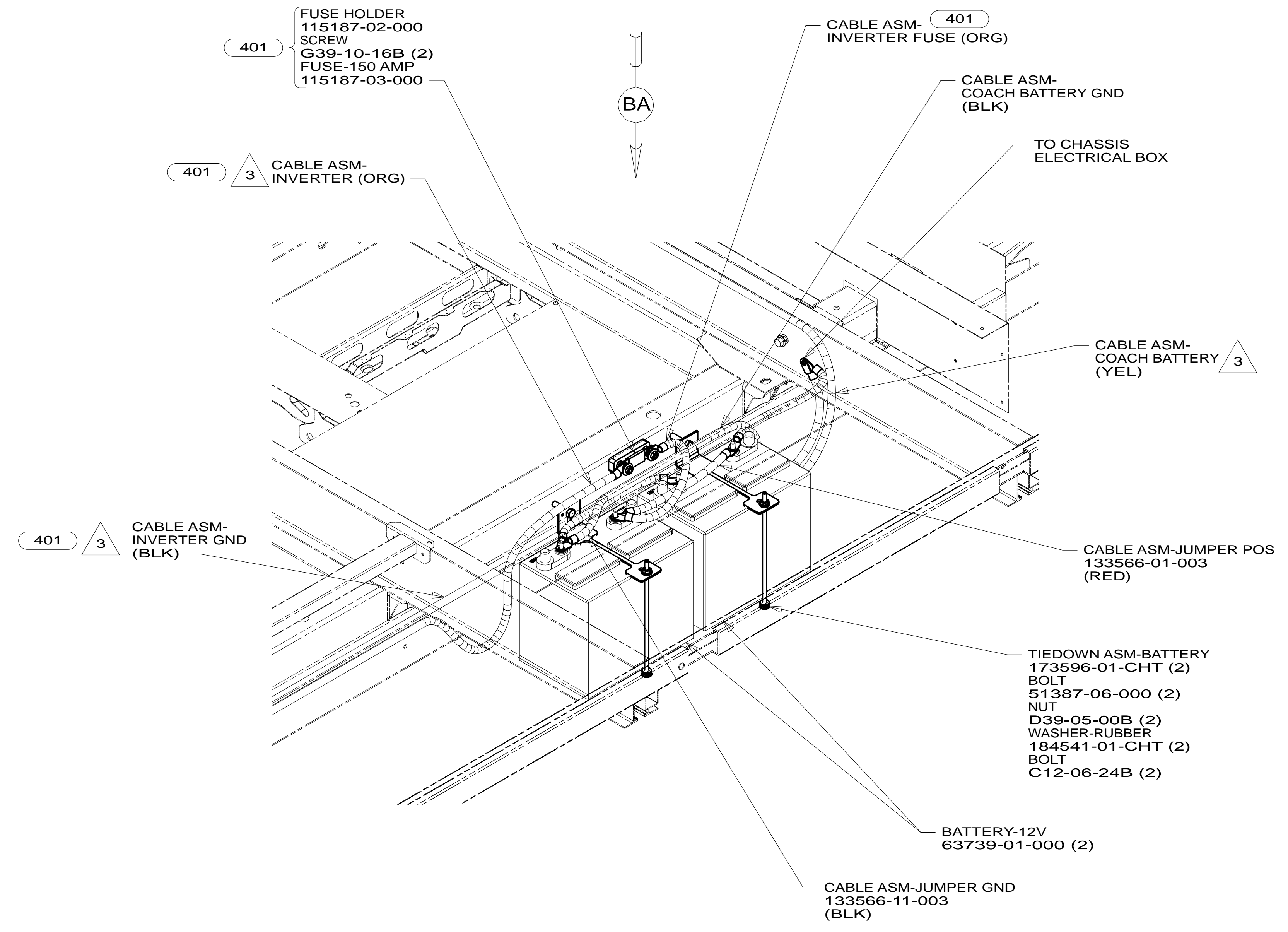
REF: 1 05-Sep-2013

- NOTES:
- SEE WIRING INSTL-CHASSIS FOR ADDITIONAL INFORMATION FOR ROUTING CABLES.
 - BATTERY CABLES ARE NOT TO BE ROUTED OVER BATTERY FILL CAPS.

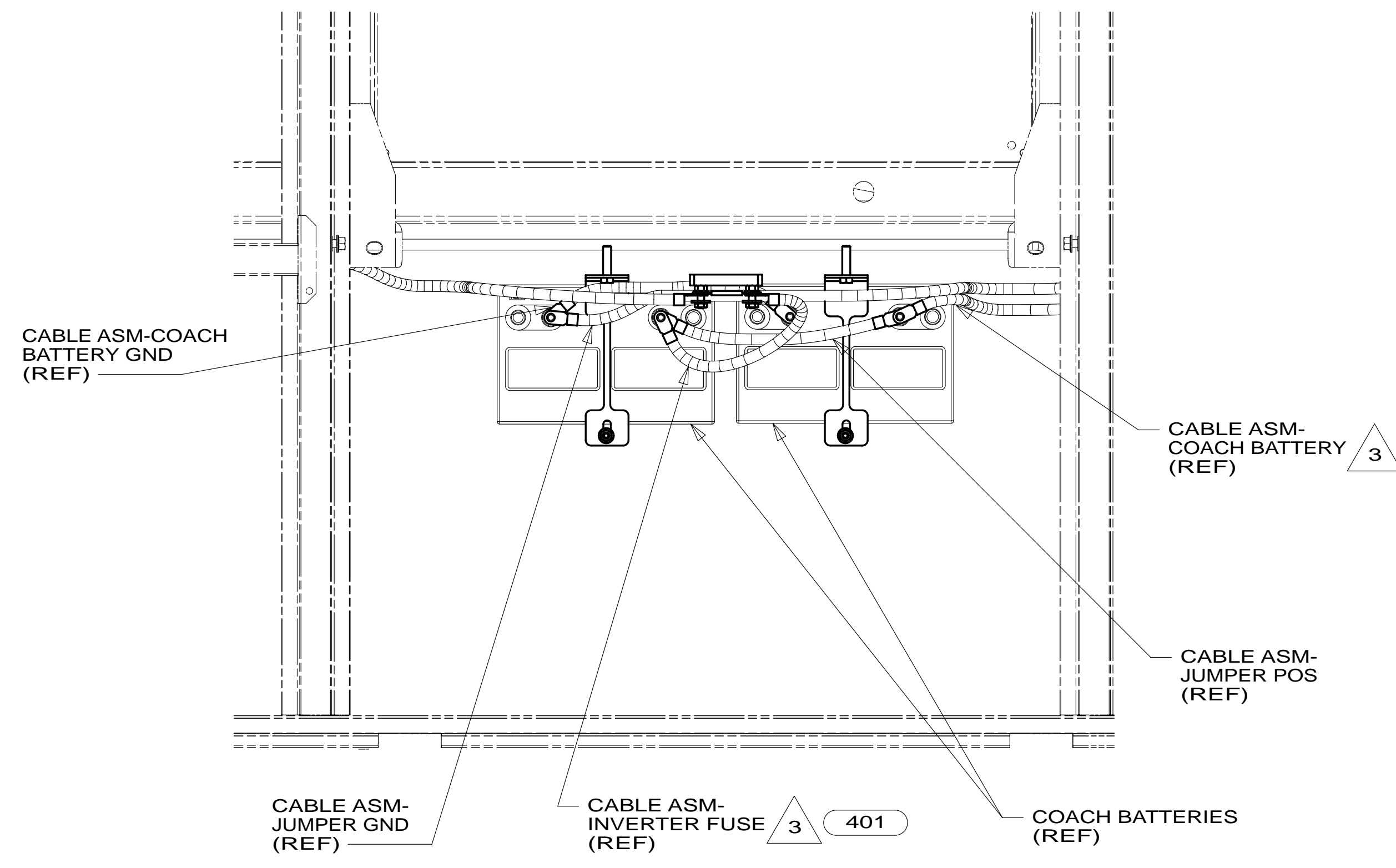
FOR ELECTRICAL TORQUE SPECIFICATIONS SEE DWG NO. 128783-01-000

FOR ELECTRICAL CALLOUTS SEE DWG NO. 121339-01-000

* 180920 * A



BATTERY BOX



VIEW BA

- NOTES:
- 3 SEE WIRING INSTL-CHASSIS FOR ROUTING OF CABLE.
 - 2. BATTERY CABLES ARE NOT TO BE ROUTED OVER BATTERY FILL CAPS.
 - 1. CHASSIS FOR ADDITIONAL INFORMATION FOR ROUTING CABLES.

- 401 INVERTER-DC/AC, 1000 WATT
- 265 CODES/STANDARDS-CSA/CMVSS
- 1B1 CODES/STANDARDS USA

FIRST USED	
13 500-SERIES	
DO NOT SCALE DRAWING	
TITLE: BATTERY INSTL	
SHEET 2	PART NO 180920 REV

FOR ELECTRICAL TORQUE SPECIFICATIONS SEE DWG NO. 128783-01-000

FOR ELECTRICAL CALLOUTS SEE DWG NO. 121339-01-000

* 180920 A *