



DANGER

Danger of electrical shock, burns or death. Always remove all power sources before attempting any repair, service or diagnostic work. Power can be present from shore power, generator, inverter or battery. All power sources must be disabled and secured before performing any service.



CAUTION

If you lack the skills, tools or equipment to perform diagnostic or repair work leave such work to an authorized Winnebago Industries dealer or other qualified shop.

DRAWING NO.	MODEL
180823-01	E27N
180823-02	E26P
180823-03	E30T
180823-04	E35B
180823-05	E35F
180823-06	E26HE

		E27N	E26P	E30T	E35B	E35F	E26HE
RED	1B1	136135-07-091	136135-07-091	136135-07-073	136135-07-060	136135-07-035	136135-07-045
	265	136136-07-091	136136-07-091	136136-07-073	136136-07-060	136136-07-035	136136-07-045
YEL	1B1	136131-05-070	136131-05-020	136131-05-024	136131-05-035	136131-05-016	136131-05-010
	265	136134-05-070	136134-05-020	136134-05-024	136134-05-035	136134-05-016	136134-05-010
YEL-2	1B1				136131-13-049	136131-13-020	
	265				136134-13-049	136134-13-020	
BRN	1B1	136131-03-056	136131-03-076	136131-03-043	136131-03-114	136131-03-049	136131-03-051
	265	136134-03-056	136134-03-076	136134-03-043	136134-03-114	136134-03-049	136134-03-051
BLU	1B1	136131-02-150	136131-02-156	136131-02-140	136131-02-140	136131-02-208	136131-02-085
	265	136134-02-150	136134-02-156	136134-02-140	136134-02-140	136134-02-208	136134-02-085
MAIN	1B1	136137-01-020	136137-01-070	136137-01-064			136137-01-065
	265	136138-01-020	136138-01-070	136138-01-064			136138-01-065
MAIN	1B1				136139-01-082	136139-01-059	
	265				136140-01-082	136140-01-059	
GRN	1B1				136135-08-060	136135-08-035	
	265				136136-08-060	136136-08-035	
GRN	1B1						
	265						
GRN-2	1B1						
	265						
GRN-3	1B1						
	265						
PUR	1B1				136131-04-045	136131-04-020	
	265				136134-04-045	136134-04-020	
BLK	1B1				136131-06-060	136131-06-047	
	265				136134-06-060	136134-06-047	
BLK	1B1	136135-06-080	136135-06-049	136135-06-022			136135-06-017
	265	136136-06-080	136136-06-049	136136-06-022			136136-06-017
WHT	1B1	136135-09-030	136135-09-018	136135-09-053	136135-09-025	136135-09-022	
	265	136136-09-030	136136-09-018	136136-09-053	136136-09-025	136136-09-022	

- ELECTRICAL SYSTEM-50 AMP
- ELECTRICAL SYSTEM 30 AMP
- CODES/STANDARDS-CSA/CMVSS
- CODES/STANDARDS USA



COPYRIGHT 2013
WINNEBAGO
INDUSTRIES, INC.

DFTR	ORIG. DATE
CHKR	ALL DIMENSIONS ARE IN MILLIMETERS
P.E.	
M.E.	FIRST USED
DSNR	13 E-SERIES
UNSPECIFIED TOLERANCES ARE:	
WHOLE DIM (X)	: 3
ONE-PLACE (X.X)	: 1.5
TWO-PLACE (X.XX)	: 0.50
ANGLE	: 1°
THIRD ANGLE PROJECTION	
DO NOT SCALE DRAWING	REFER TO ES0018 FOR FASTENER TIGHTENING GUIDELINES
TITLE: LOAD CENTER/ATS ASM	
SHEET 1 OF 6	PART NO 180823 REV

FOR ELECTRICAL
TORQUE
SPECIFICATIONS
SEE DWG NO.
128783-01-000

FOR
ELECTRICAL
CALLOUTS
SEE DWG NO.
121339-01-000

- SEE DETAIL FD FOR EMS INSTALLATION.
- SEE DETAIL FB FOR CONNECTOR INSTALLATION.
- 1. ALL GROUNDS WIRES TO BE COVERED WITH TUBING
8041-02-000.

		E27N	E26P	E30T	E35B	E35F	E26HE
THROW IN WIRE #1	1B1	136131-03-012	136131-03-018	136131-02-010	136131-12-055	136131-03-055	136131-03-061
	265	136134-03-012	136134-03-018	136134-02-010	136134-12-055	136134-03-055	136134-03-061
THROW IN WIRE #2	1B1	136131-02-043	136131-03-020	136131-19-180	136131-12-150	136131-12-190	136131-05-012
	265	136134-02-043	136134-03-020	136134-19-180	136134-12-150	136134-12-190	136134-05-012
THROW IN WIRE #3	1B1	136131-03-011 401	136131-03-011 401	136131-03-009 401	136131-04-013 401	136131-04-011 401	
	265	136134-03-011 401	136134-03-011 401	136134-03-009 401	136134-04-013 401	136134-04-011 401	
THROW IN WIRE #4	1B1	136131-19-011 401	136131-19-011 401	136131-19-009 401	136131-12-013 401	136131-12-011 401	
	265	136134-19-011 401	136134-19-011 401	136134-19-009 401	136134-12-013 401	136134-12-011 401	
THROW IN WIRE #5	1B1	136131-19-100	136131-19-103	136131-02-003	136131-12-036		
	265	136134-19-100	136134-19-103	136134-02-003	136134-12-036		
THROW IN WIRE #6	1B1	136131-19-040	136131-05-012	136131-19-025 21W			
	265	136134-19-040	136134-05-012	136134-19-025 21W			
THROW IN WIRE #7	1B1			136131-03-043	136131-03-016		
	265			136134-03-043	136134-03-016		
GENERATOR CABLE ASM	1B1					136137-01-038	
	265					136138-01-038	
GENERATOR CABLE ASM	1B1				174762-01-049	136137-01-038	
	265				174762-01-049	136138-01-038	
GROUND MAIN		136145-02-024	136145-02-012	136145-02-027	136145-01-048	136145-01-028	136145-02-012
GROUND ATS		136145-01-015	136145-01-065	136145-01-042	136145-01-062	136145-01-048	
GROUND MODULE ALS		136145-05-022	136145-05-008	136145-05-027			
SLIDEOUT WIRE #1		136151-02-018	136151-03-028	136151-03-031	136151-12-034	136151-03-015	
SLIDEOUT WIRE #2		136151-05-018			136151-12-032	136151-03-040	
SLIDEOUT WIRE #3		136151-03-018					
SLIDEOUT WIRE #4		136152-06-018					

- SEE DETAIL FC FOR CONNECTOR INSTALLATION.
- SEE DETAIL FA FOR CONNECTOR INSTALLATION.
- SEE DETAIL FG FOR ADDITIONAL INFORMATION.
- SEE DETAIL FE FOR ADDITIONAL INFORMATION.
- SEE DETAIL FB FOR CONNECTOR INSTALLATION.

1. ALL GROUNDS WIRES TO BE COVERED WITH TUBING 8041-02-000.

NOTES:

- DINING/BUFFET/TV
- WTR HTR-6GAL/ELE/LP/MOTORAID
- ENTERTAIN CENTR/EXT TV-DVD
- INVERTER-DC/AC, 1000 WATT
- CODES/STANDARDS-CSA/CMVSS
- CODES/STANDARDS USA

FIRST USED

13 E-SERIES

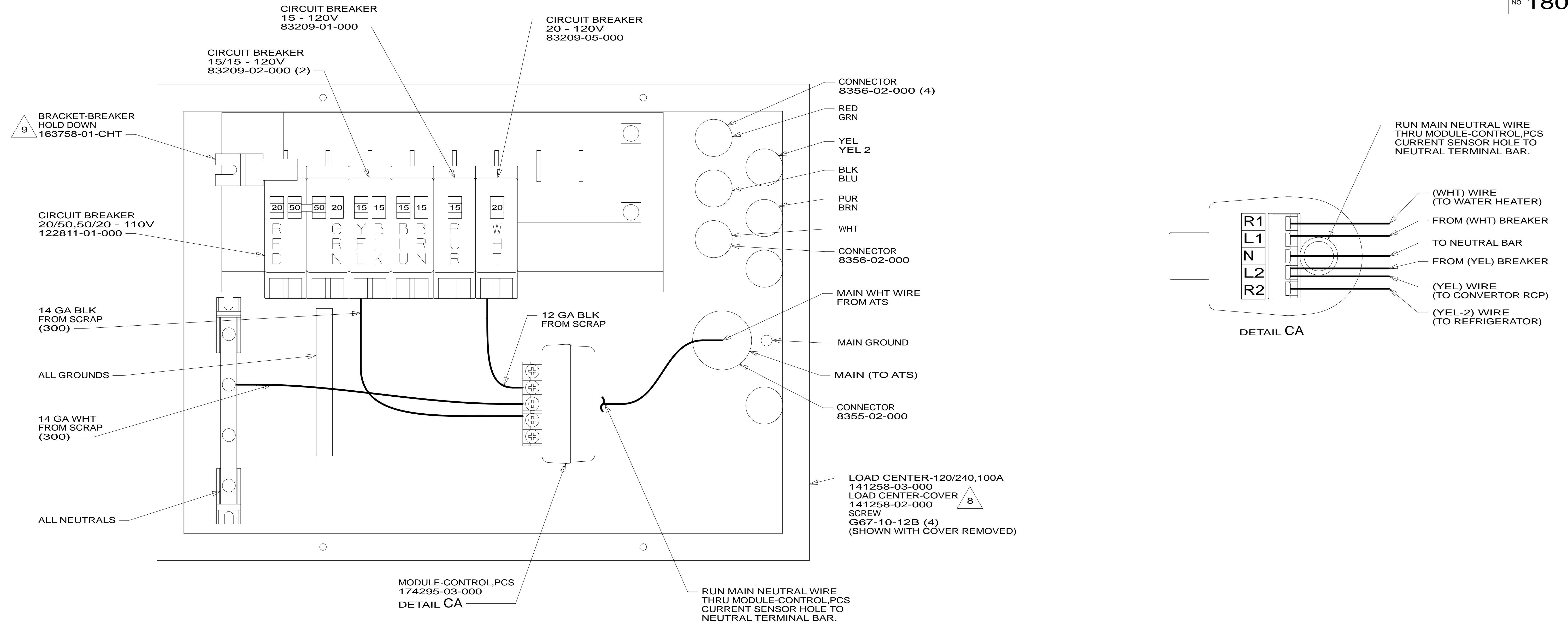
DO NOT SCALE DRAWING

TITLE: **LOAD CENTER/ATS ASM**

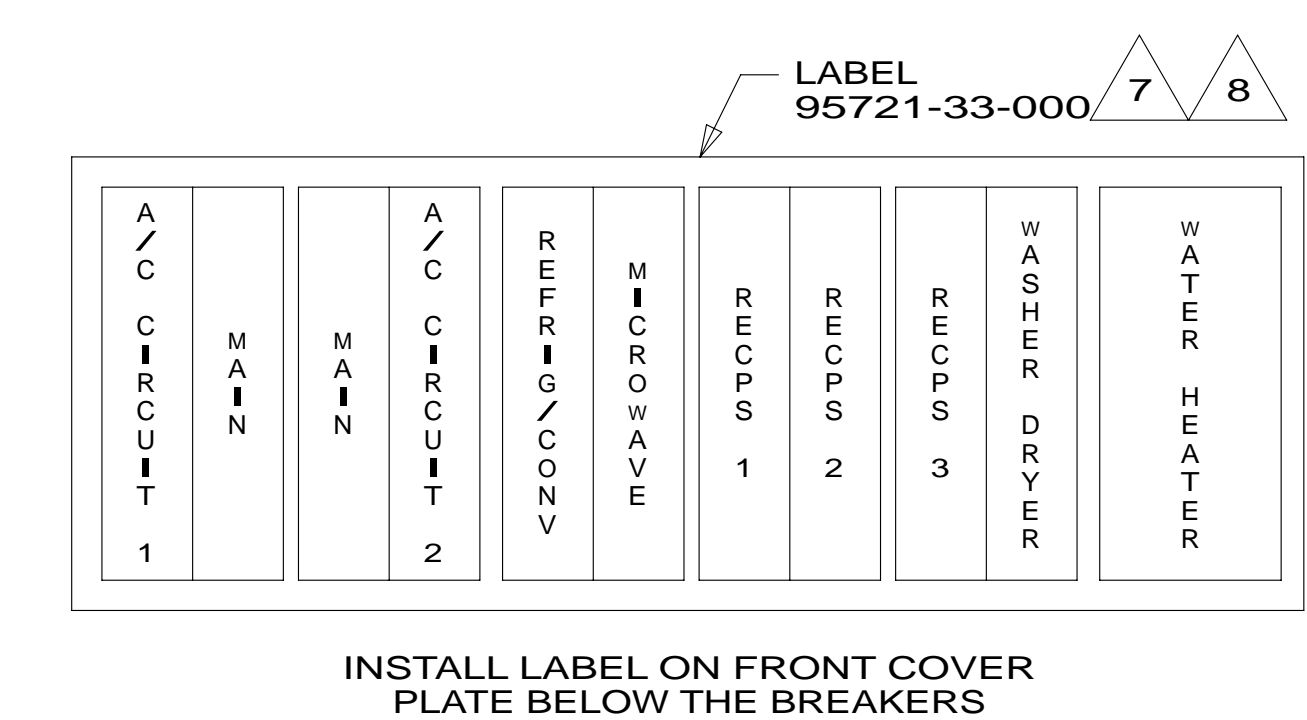
SHEET 2 PART NO **180823** REV

FOR ELECTRICAL TORQUE SPECIFICATIONS SEE DWG NO. 128783-01-000

FOR ELECTRICAL CALLOUTS SEE DWG NO. 121339-01-000



- NOTES:**
- 1. ALL GROUND WIRES TO BE COVERED WITH TUBING 8041-02-000.
 - 2. GROUND WIRES ARE NOT SHOWN FOR CLARITY.
 - 3. ALL WIRES TO BE CLAMPED WITHIN 200MM OF ATS.
 - 4. ALL 110V STRANDED WIRE W/O TERMINALS TO BE STRIPPED 10MM AND SOLDER DIPPED.
 - 5. REMOVE 400MM FROM OUTER JACKET ON ALL WIRES ENTERING LOAD CENTER AND TRIM INDIVIDUAL CONDUCTORS AS REQUIRED TO MAKE INTERNAL CONNECTIONS
 - 6. ATTACH WIRES TO BACKSIDE OF LOAD CENTER, USE EXISTING HOLES AND TIE-WIRE 116673-01-000.
 - 7. BLACKEN OUT "WASHER DRYER" WITH BLACK MARKER.
 - 8. INSTALLED BY ASSEMBLY LINE.
 - 9. LOOSEN LEFT BUSS BAR MOUNTING SCREW, INSERT BRACKET-BREAKER HOLD DOWN UNDER SCREW, ORIENTATE BRACKET TOWARD MAIN BREAKER AS SHOWN AND TIGHTEN SCREW.



E35B,E35F

FOR ELECTRICAL TORQUE SPECIFICATIONS SEE DWG NO. 128783-01-000

FOR ELECTRICAL CALLOUTS SEE DWG NO. 121339-01-000

- 53D WTR HTR-6GAL/ELE/LP/MOTORAID
- 29R AC HEAT PUMP-2 HI EFFICIENCY
- 276 A/C ROOF-HI EFF (2) W/EMS
- 78J ELECTRICAL SYSTEM-50 AMP
- 265 CODES/STANDARDS-CSA/CMVSS
- 1B1 CODES/STANDARDS USA

FIRST USED

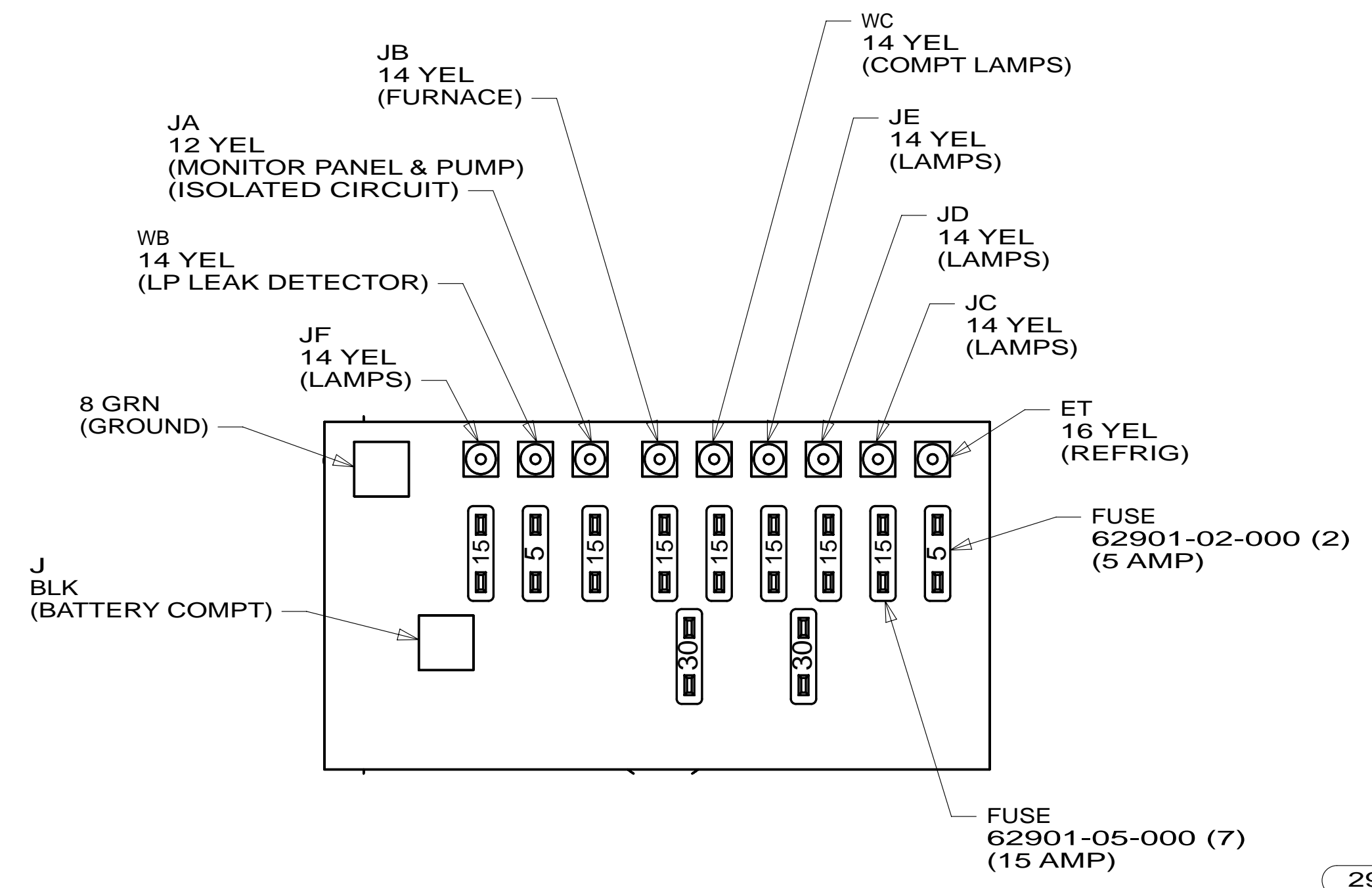
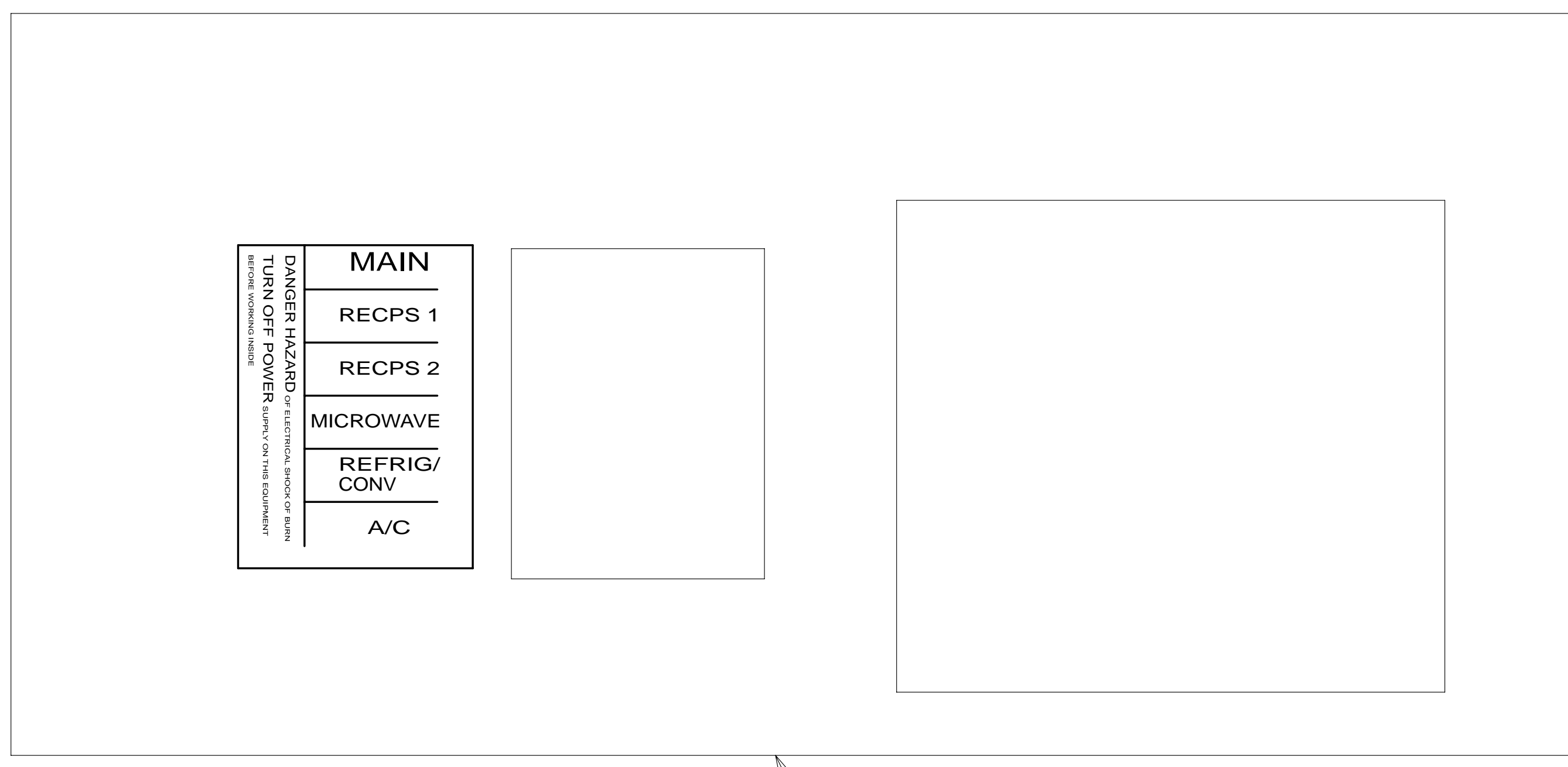
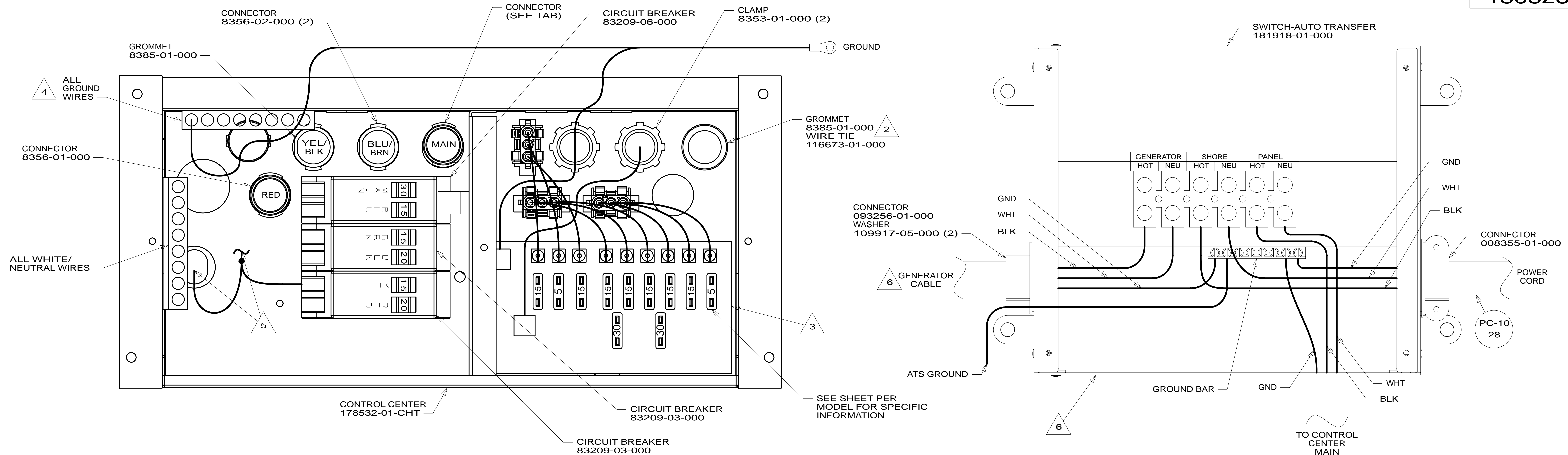
13 E-SERIES

DO NOT SCALE DRAWING

TITLE: **LOAD CENTER/ATS ASM**

SHEET 3 PART NO. **180823** REV

14-Feb-2013



- NOTES:
- 1. ALL GROUND WIRES TO BE COVERED WITH TUBING 8041-02-000.
 - 2. INSERT GROMMET FROM THE INSIDE OF CONTROL CENTER SECURE WIRES TO BACKSIDE OF LOAD CENTER WITH WIRE TIE.
 - 3. SEE WIRING INSTL-BODY,12V FOR ADDITIONAL INFORMATION.
 - 4. ALL GROUND WIRE TO BE COVERED WITH TUBING 8041-02-000.
 - 5. CONNECT CONVERTER POWER CIRCUIT INTO YELLOW BREAKER AND USE SUPPLIED WIRE NUT TO CONNECT YELLOW CIRCUIT.

6. GENERATOR CABLE ON BOTTOM FOR E30T.

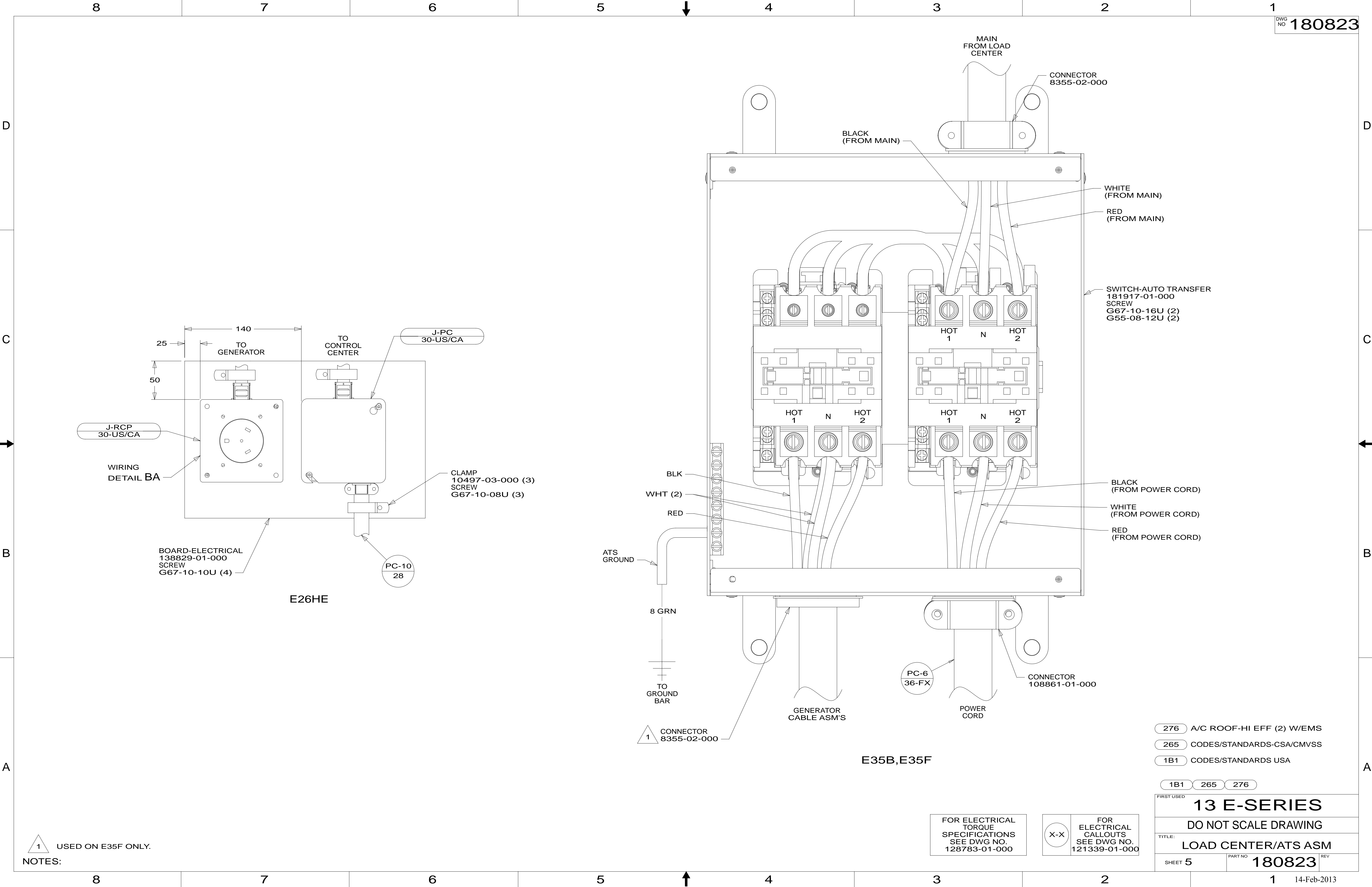
E27N,E26P,E30T

FOR ELECTRICAL TORQUE SPECIFICATIONS SEE DWG NO. 128783-01-000

FOR ELECTRICAL CALLOUTS SEE DWG NO. 121339-01-000

- 29J AC HEAT PUMP-1
- 25Q A/C ROOF AIR (1) 14,800 BTU
- 12D ELECTRICAL SYSTEM 30 AMP
- 265 CODES/STANDARDS-CSA/CMVSS
- 1B1 CODES/STANDARDS USA

1B1	265	12D	25Q	29J
FIRST USED				
13 E-SERIES				
DO NOT SCALE DRAWING				
TITLE: LOAD CENTER/ATS ASM				
SHEET 4	PART NO	180823		REV



NOTES:
 1 USED ON E35F ONLY.

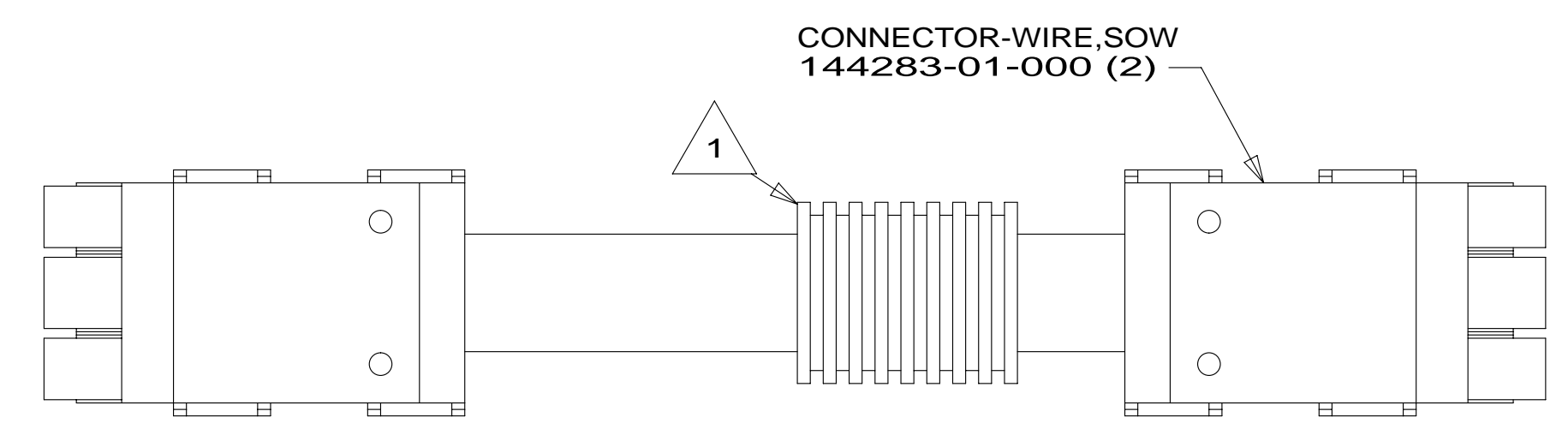
FOR ELECTRICAL TORQUE SPECIFICATIONS SEE DWG NO. 128783-01-000

FOR ELECTRICAL CALLOUTS SEE DWG NO. 121339-01-000

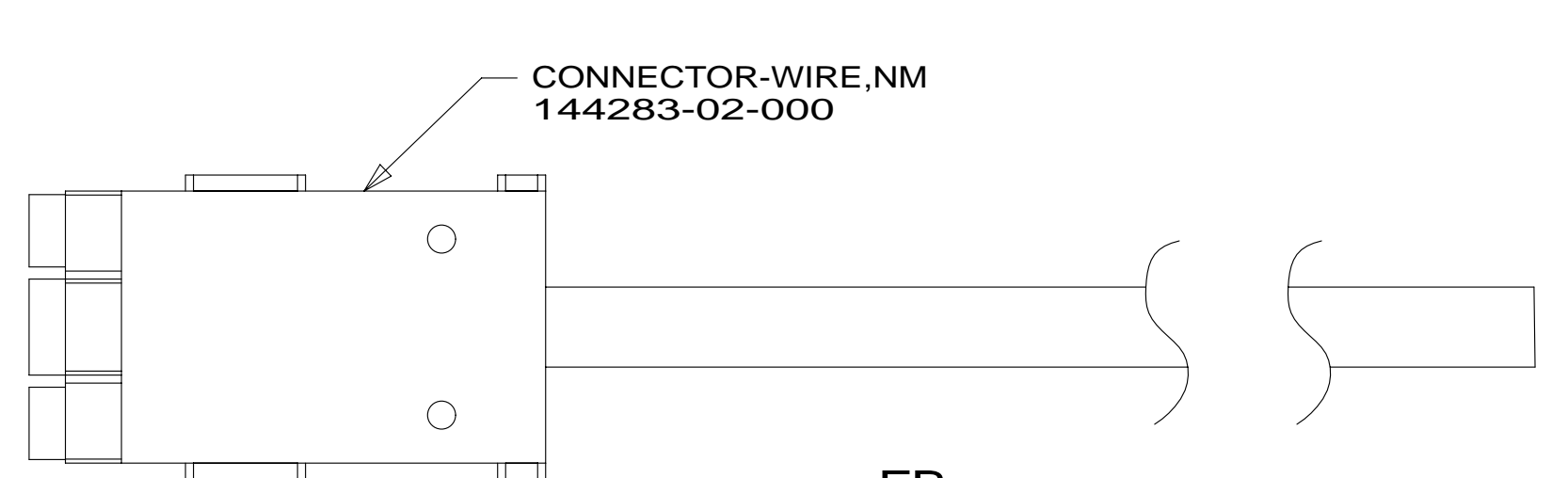
- 276 A/C ROOF-HI EFF (2) W/EMS
- 265 CODES/STANDARDS-CSA/CMVSS
- 1B1 CODES/STANDARDS USA

1B1 265 276

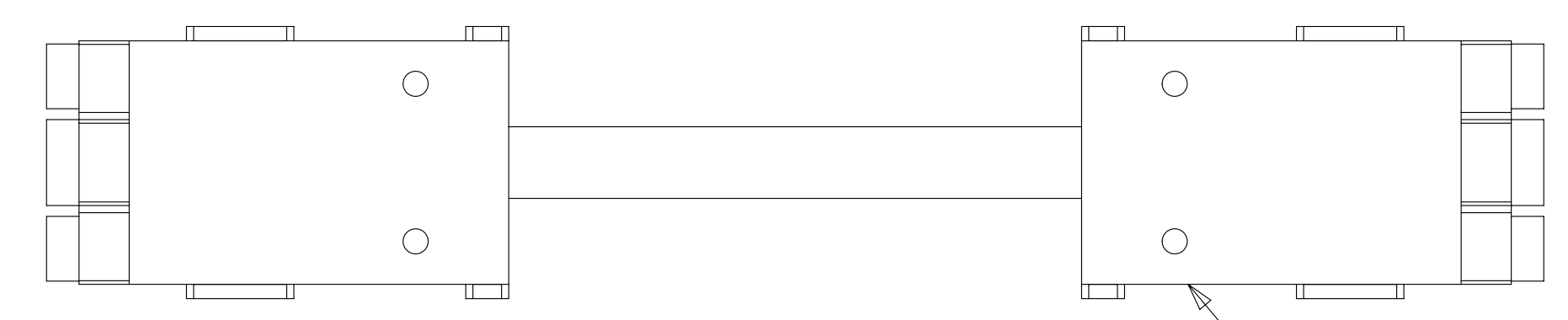
FIRST USED	
13 E-SERIES	
DO NOT SCALE DRAWING	
TITLE: LOAD CENTER/ATS ASM	
SHEET 5	PART NO 180823 REV



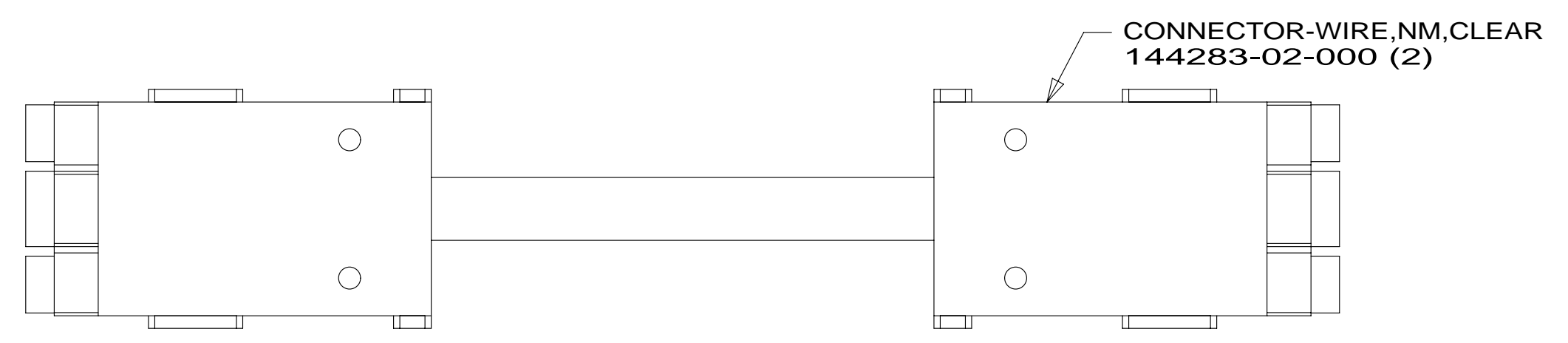
DETAIL FA



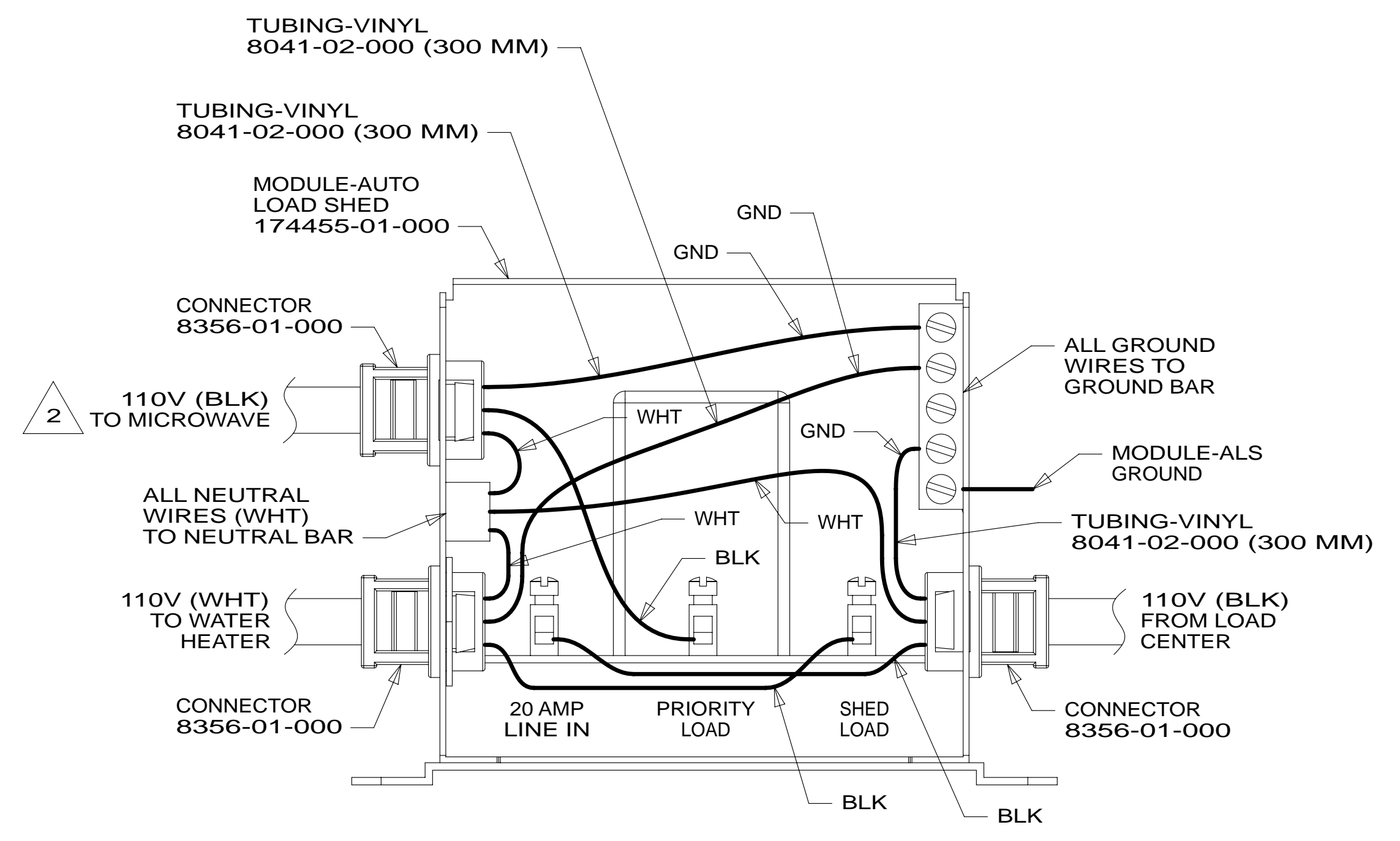
DETAIL FB



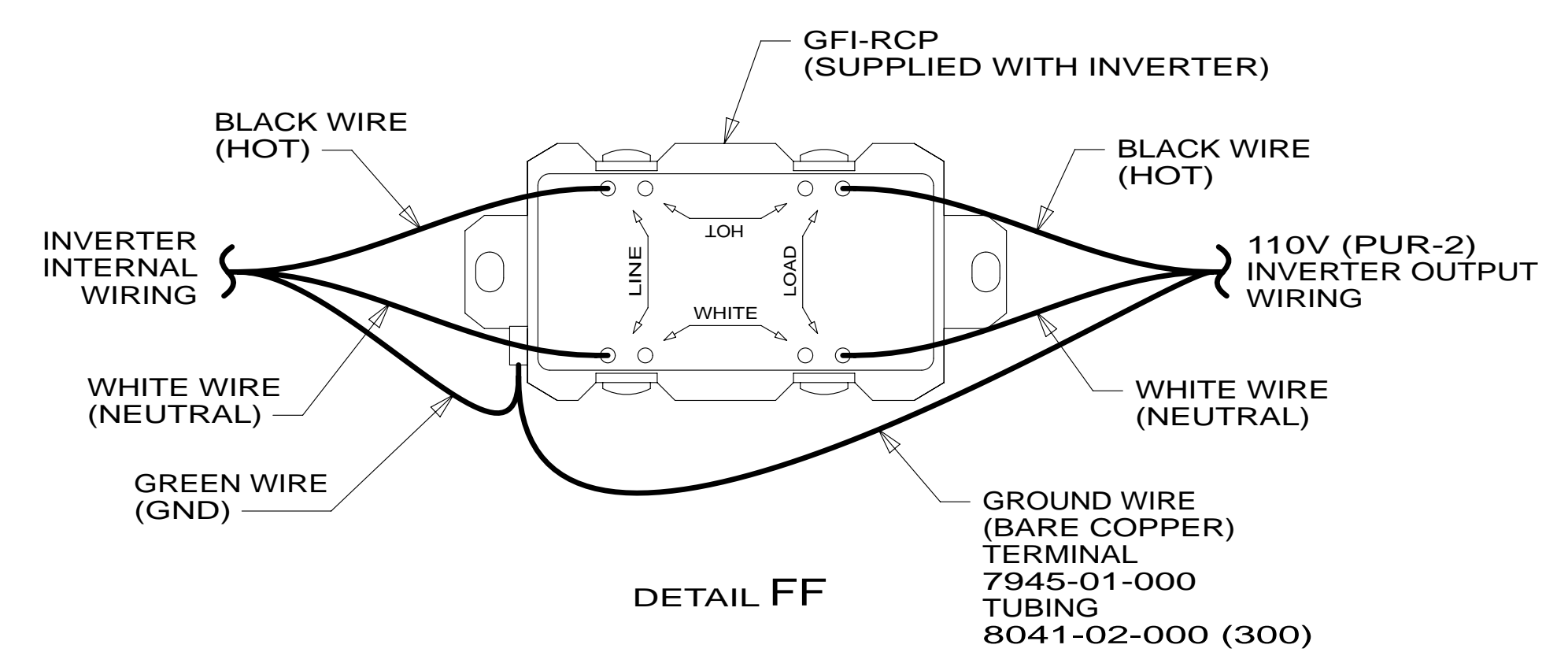
DETAIL FC



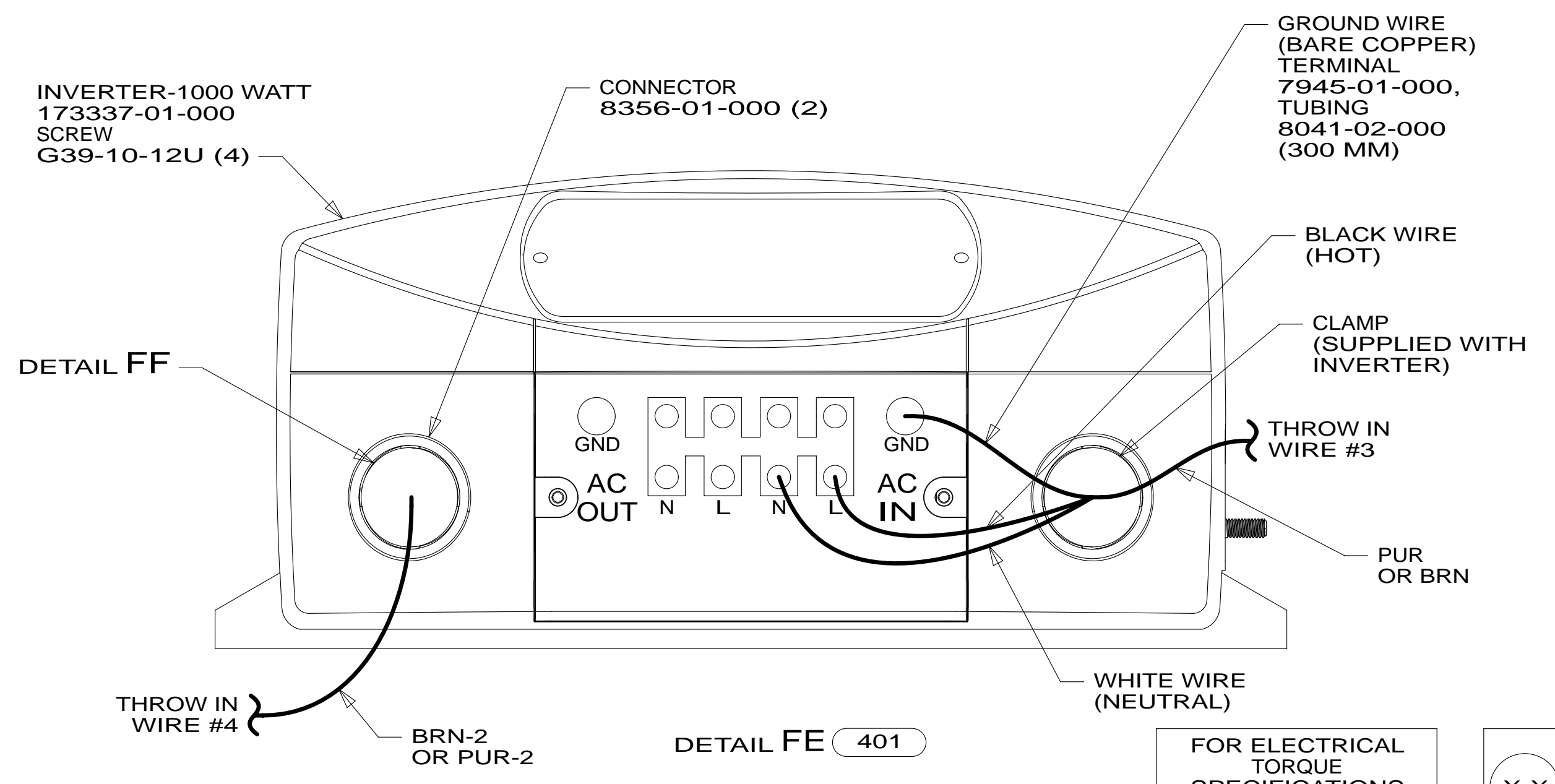
DETAIL FG



DETAIL FD



DETAIL FF



DETAIL FE 401

2 ON E26P, MEASURE 2400MM FROM THE BACK OF THE LOAD CENTER, LOOP THE BLACK WIRE AND CONNECT AS SHOWN. ON E30W MEASURE BACK 1200. ON E27N, MEASURE BACK 700.

1 APPLY 300MM OF CONDUIT-CONVOLUTE 41953-05-000 OVER WIRE AT DIMENSION SHOWN AND SECURE BOTH ENDS OF TUBING TO WIRE WITH TAPE 8363-01-000.

NOTES:

- 53D WTR HTR-6GAL/ELE/LP/MOTORAID
- 53B WTR HTR-6GAL ELECTRIC/LP GAS
- 401 INVERTER-DC/AC, 1000 WATT
- 265 CODES/STANDARDS-CSA/CMVSS
- 1B1 CODES/STANDARDS USA

1B1	265
FIRST USED	
13 E-SERIES	
DO NOT SCALE DRAWING	
TITLE: LOAD CENTER/ATS ASM	
SHEET 6	PART NO 180823 REV

FOR ELECTRICAL TORQUE SPECIFICATIONS SEE DWG NO. 128783-01-000

FOR ELECTRICAL CALLOUTS SEE DWG NO. 121339-01-000

