



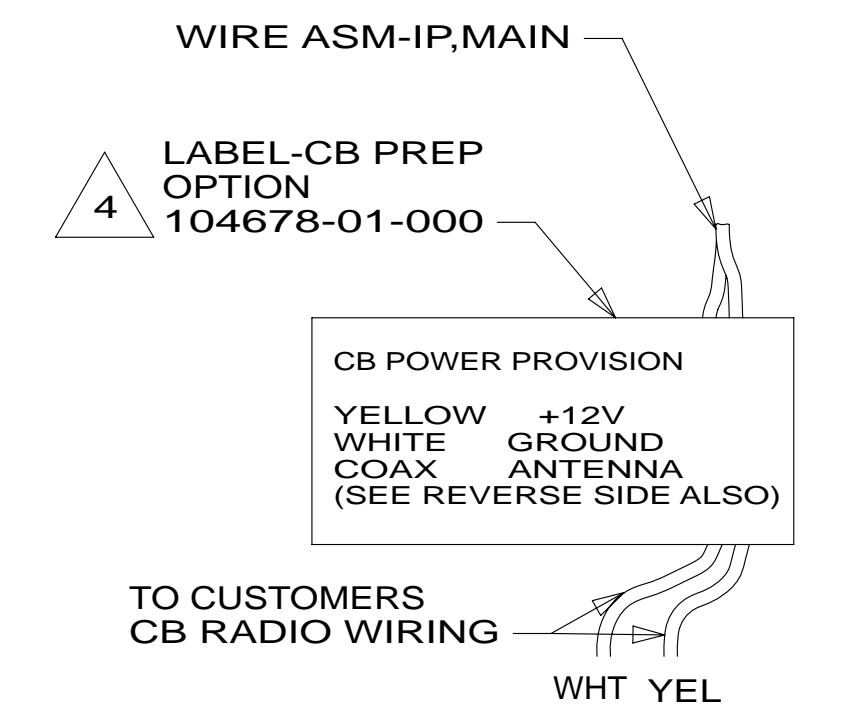
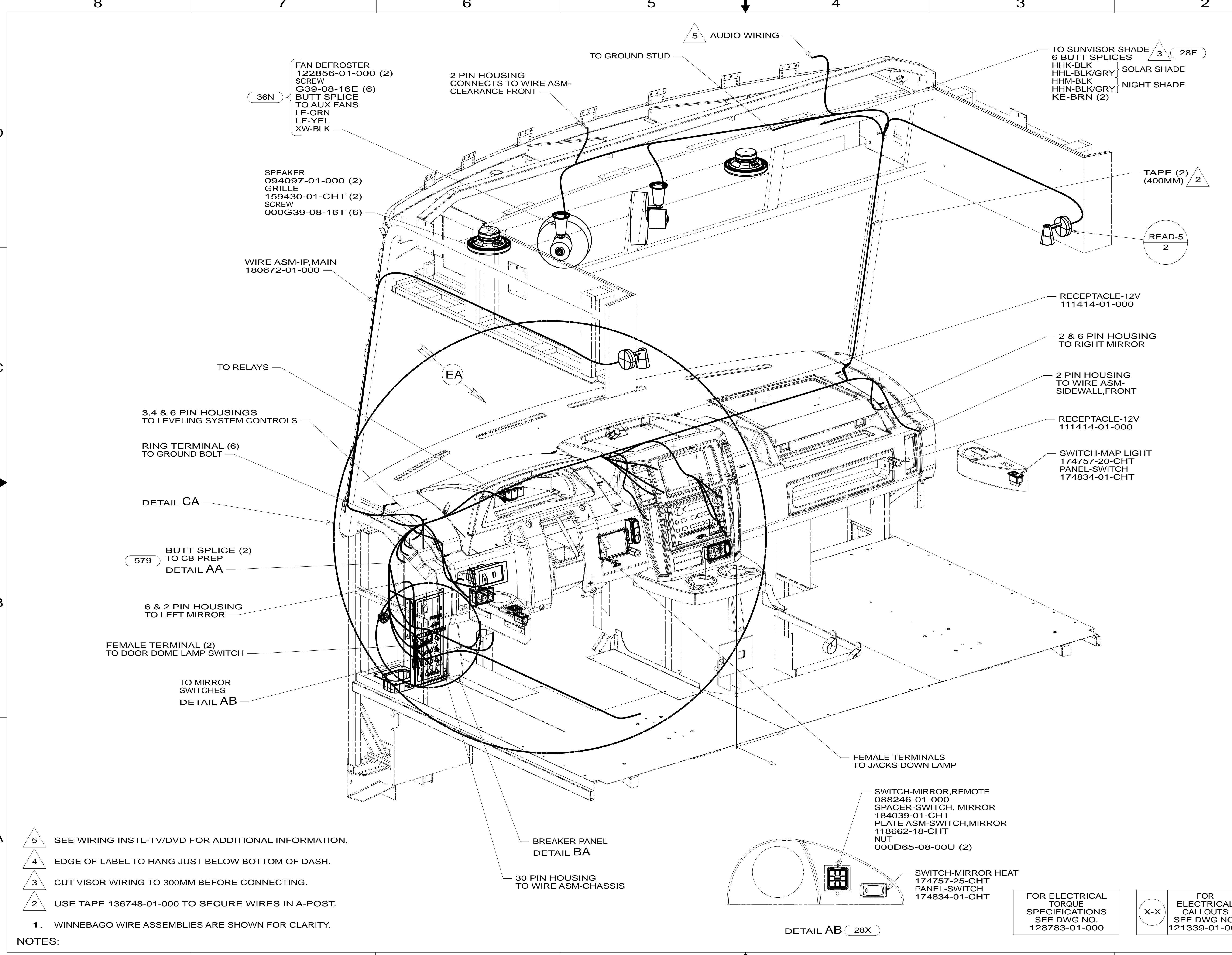
DANGER

Danger of electrical shock, burns or death. Always remove all power sources before attempting any repair, service or diagnostic work. Power can be present from shore power, generator, inverter or battery. All power sources must be disabled and secured before performing any service.



CAUTION

If you lack the skills, tools or equipment to perform diagnostic or repair work leave such work to an authorized Winnebago Industries dealer or other qualified shop.



DETAIL AA 579

- 579 RADIO - CB WIRE PREP
- 36N FANS-DEFROSTER, AUXILIARY
- 28F FRONT SHADE-POWERED
- 265 CODES/STANDARDS-CSA/CMVSS
- 1B1 CODES/STANDARDS USA

UNSPECIFIED TOLERANCES ARE:		MATERIAL:	
WHOLE DIM (X)	: 3		
ONE-PLACE (X.X)	: 1.5		
TWO-PLACE (X.XX)	: 0.50		
ANGLE	: 1°		
THIRD ANGLE PROJECTION			
DO NOT SCALE DRAWING		REFER TO ES0018 FOR FASTENER TIGHTENING GUIDELINES	
TITLE: WIRING INSTL-FRONT END			
SHEET 1 OF 9		PART NO 180673 REV	
REF: 1		31-Jan-2013	

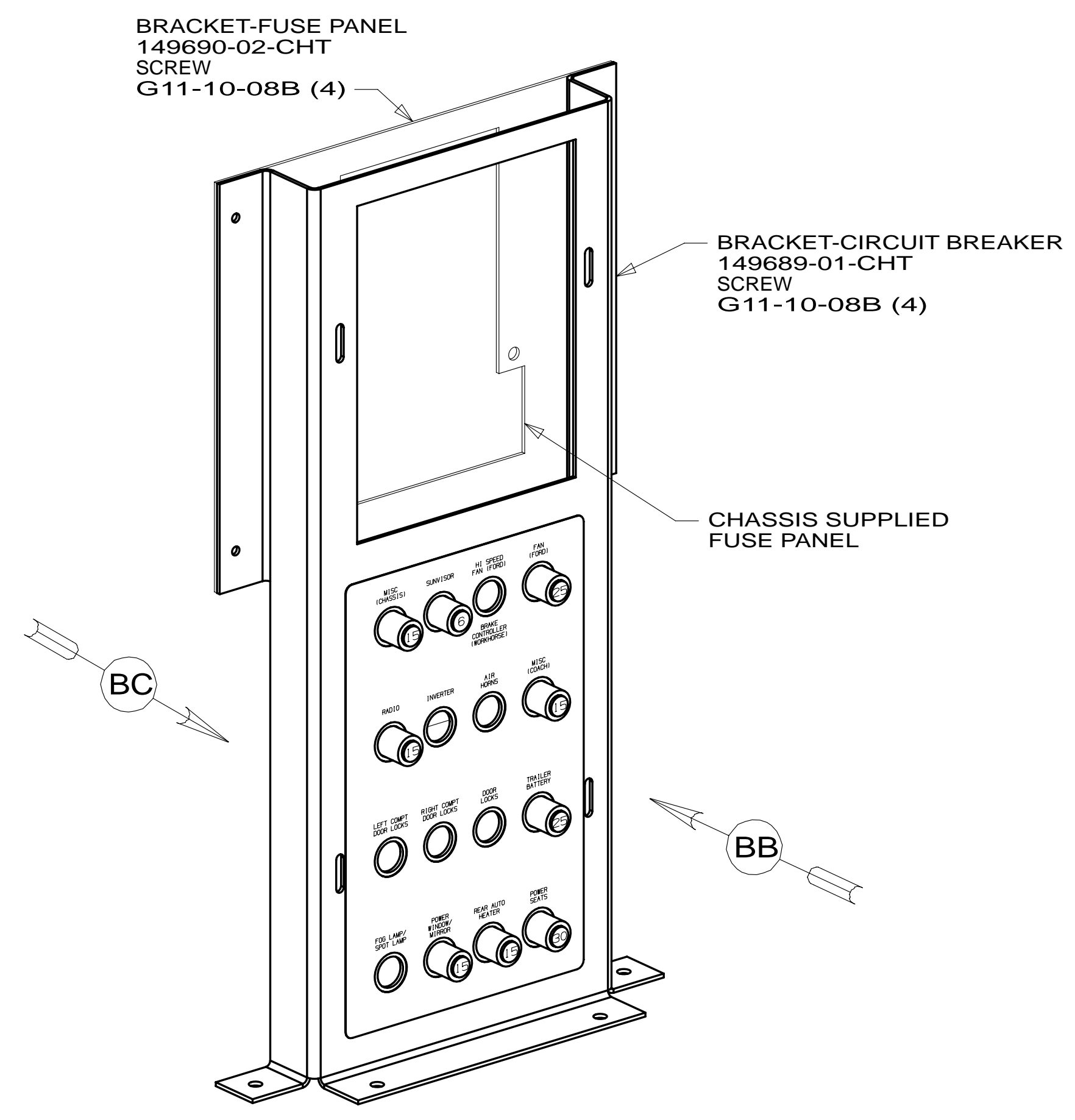
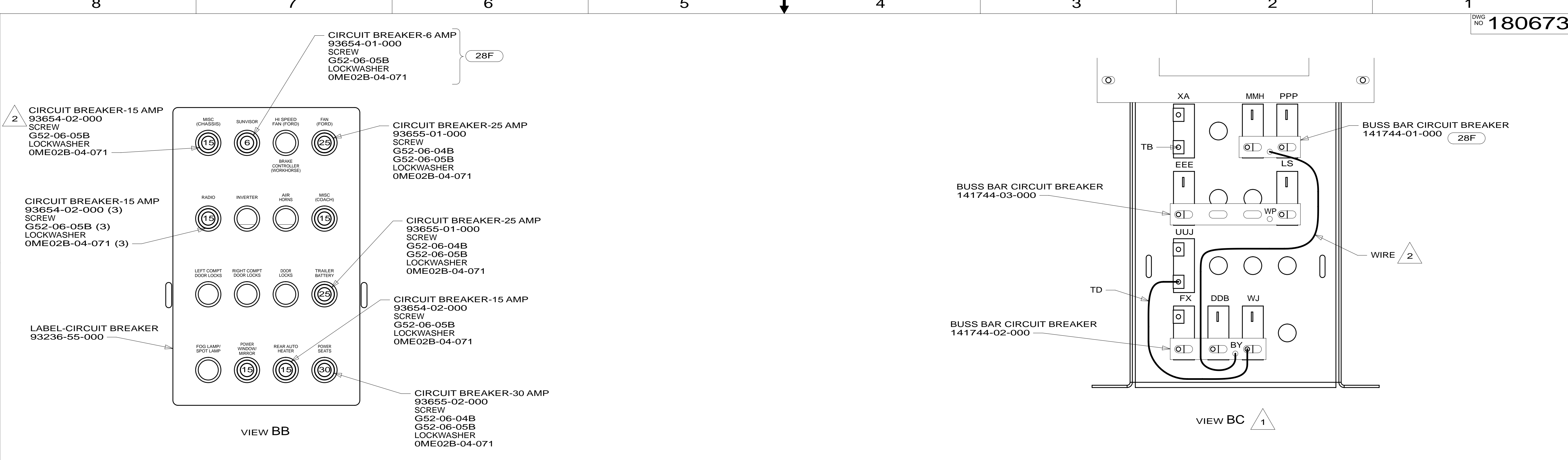
- 5 SEE WIRING INSTL-TV/DVD FOR ADDITIONAL INFORMATION.
 - 4 EDGE OF LABEL TO HANG JUST BELOW BOTTOM OF DASH.
 - 3 CUT VISOR WIRING TO 300MM BEFORE CONNECTING.
 - 2 USE TAPE 136748-01-000 TO SECURE WIRES IN A-POST.
1. WINNEBAGO WIRE ASSEMBLIES ARE SHOWN FOR CLARITY.
- NOTES:

FOR ELECTRICAL TORQUE SPECIFICATIONS SEE DWG NO. 128783-01-000

FOR ELECTRICAL CALLOUTS SEE DWG NO. 121339-01-000

DETAIL AB 28X

* 180673 *



DETAIL BA

2 USED ON D33C AND D35G FOR THE SLIDEOUT LOCK.
1 ALL CIRCUITS ARE IN WIRE ASM-IP,MAIN.

NOTES:

FOR ELECTRICAL TORQUE SPECIFICATIONS SEE DWG NO. 128783-01-000

FOR ELECTRICAL CALLOUTS SEE DWG NO. 121339-01-000

- 28F FRONT SHADE-POWERED
- 265 CODES/STANDARDS-CSA/CMVSS
- 1B1 CODES/STANDARDS USA

1B1	265
FIRST USED	
13 D-SERIES	
DO NOT SCALE DRAWING	
TITLE: WIRING INSTL-FRONT END	
SHEET 2	PART NO 180673 REV

* 180673 * A

8

7

6

5

4

3

2

1

D

D

C

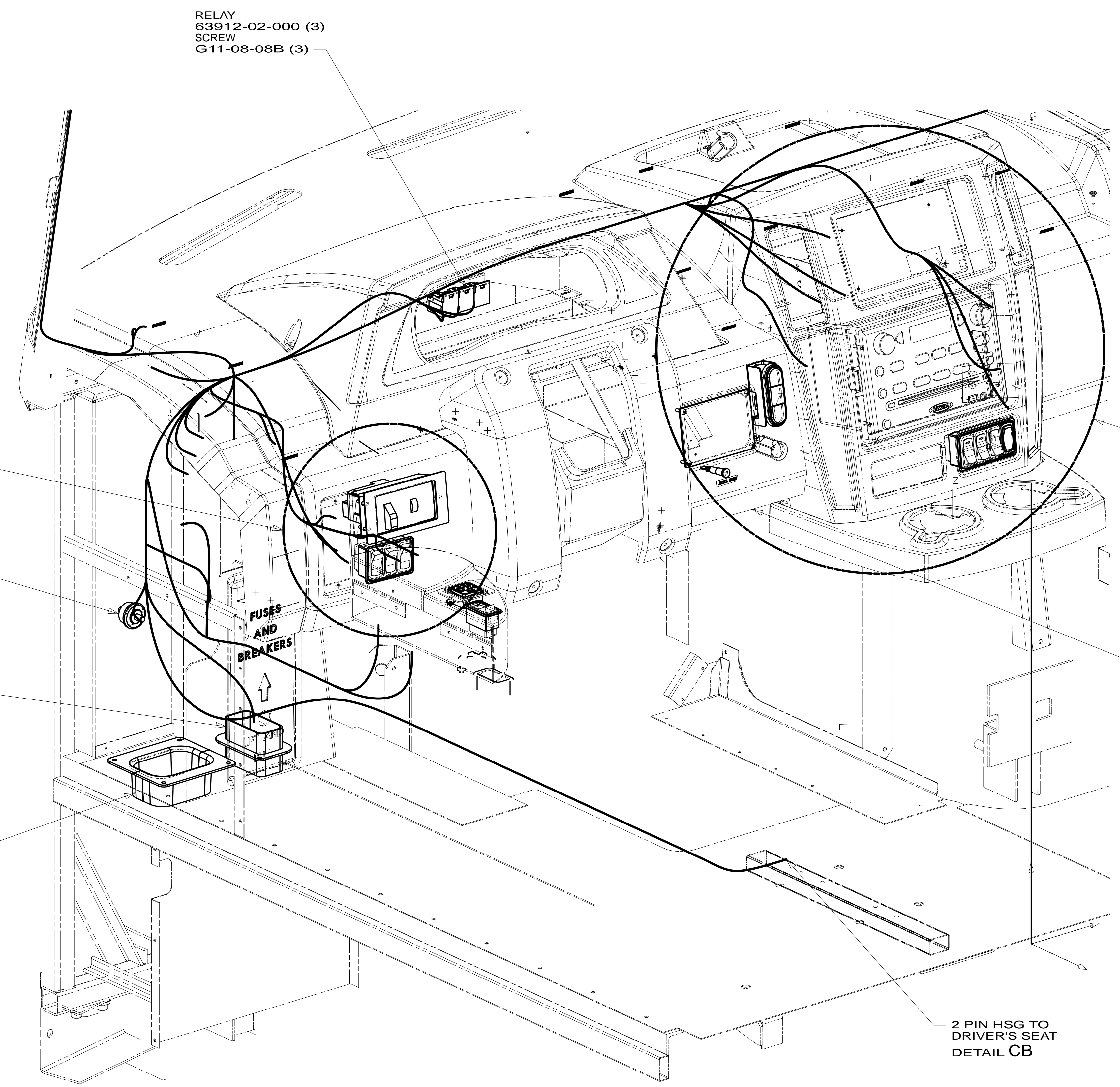
C

B

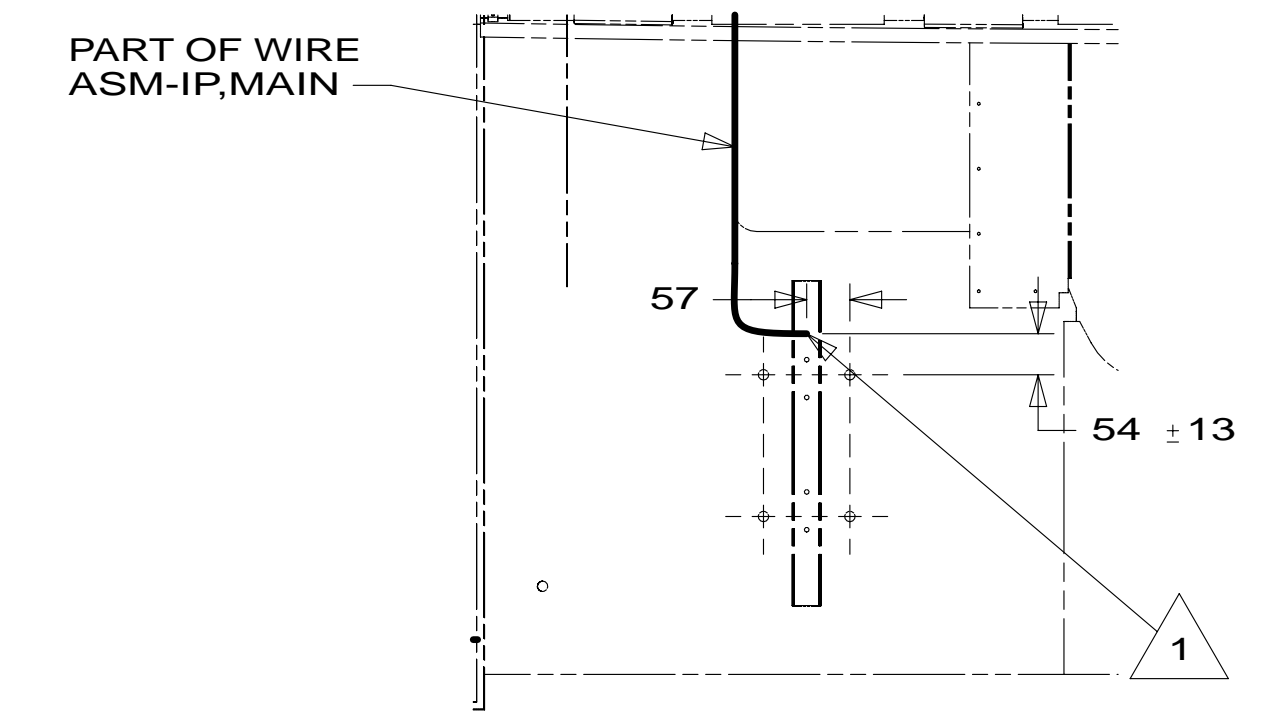
B

A

A



RELAY
63912-02-000 (3)
SCREW
G11-08-08B (3)



DETAIL CB 64Q

DETAIL DA

DETAIL DB

STUD-FEED THRU
118499-01-000

FUSES
AND
BREAKERS

BRACKET-MOUNTING
118571-07-000
NUT
D11-10-00B (2)

FORD DIAGNOSTIC CONNECTOR
NUT-SPEED
40921-03-000
SCREW
G11-10-10U (2)

SEAL-WIRES,CAB FLOOR
134542-01-CHT (2)
SCREW
G39-10-12B (6)

2 PIN HSG TO
DRIVER'S SEAT
DETAIL CB

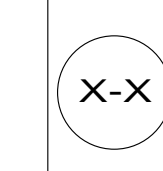
- 64Q SEAT PED-6-WAY POWER DRIVER
- 265 CODES/STANDARDS-CSA/CMVSS
- 1B1 CODES/STANDARDS USA

1B1 265

FIRST USED	
13 D-SERIES	
DO NOT SCALE DRAWING	
TITLE: WIRING INSTL-FRONT END	
SHEET 3	PART NO 180673 REV

FOR ELECTRICAL
TORQUE
SPECIFICATIONS
SEE DWG NO.
128783-01-000

FOR
ELECTRICAL
CALLOUTS
SEE DWG NO.
121339-01-000



DETAIL CA

1 LEAVE 675±50MM OF WIRE FOR SEAT TRAVEL.

NOTES:

8

7

6

5

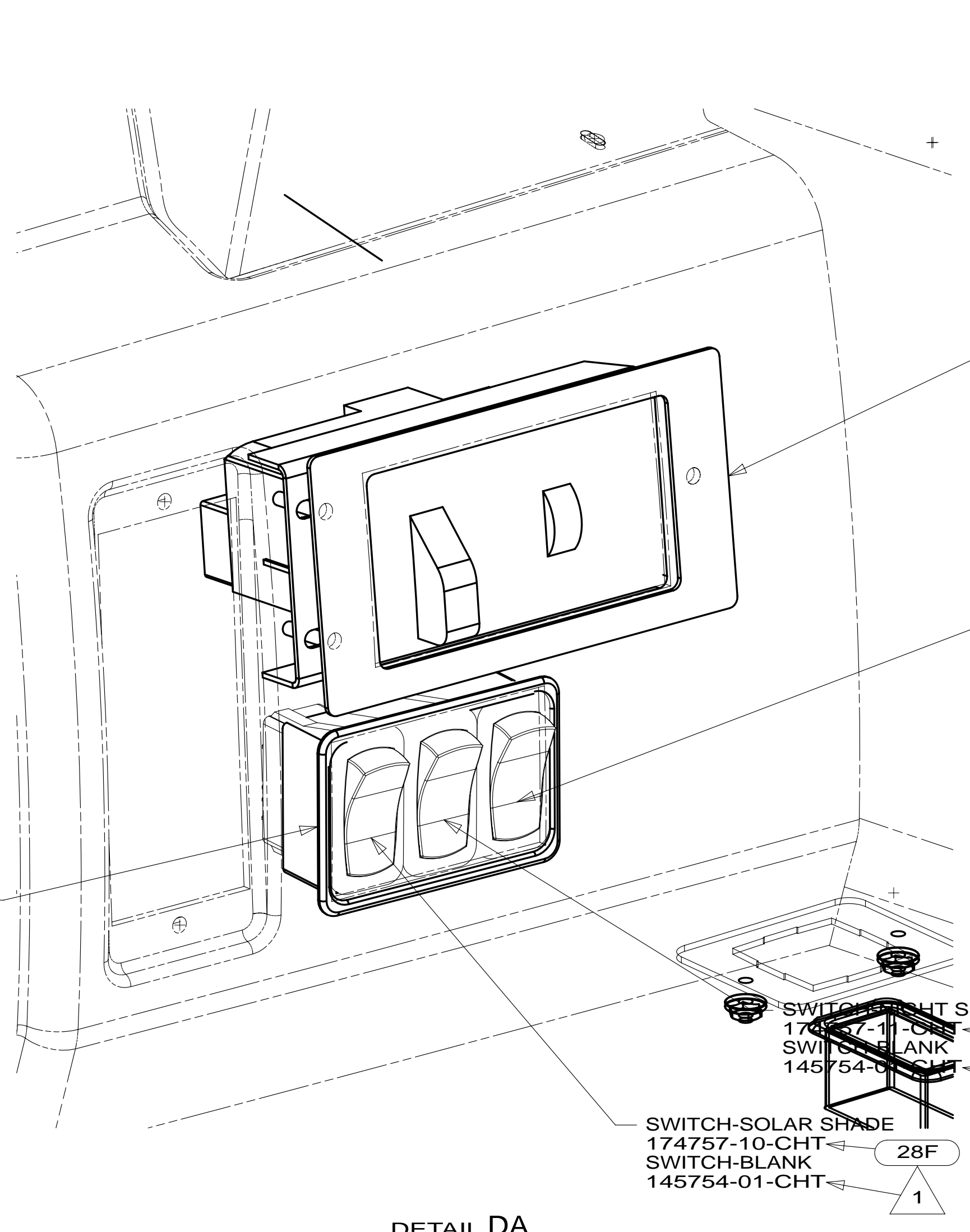
4

3

2

1

* 180673 * A



INSERT ASM-SWITCH,HDLMP
155589-10-CHT
MOUNT-HEADLAMP-SWITCH
155516-01-CHT
SEAL
155523-01-CHT
WASHER
E13-10-00U (7)
NUT
D65-08-00U (7)

SWITCH-BATTERY BOOST
174757-31-CHT

PANEL-SWITCH
174834-02-CHT

SWITCH-LIGHT SHADE
174757-10-CHT
SWITCH-BLANK
145754-01-CHT
28F
1

SWITCH-SOLAR SHADE
174757-10-CHT
SWITCH-BLANK
145754-01-CHT
28F
1

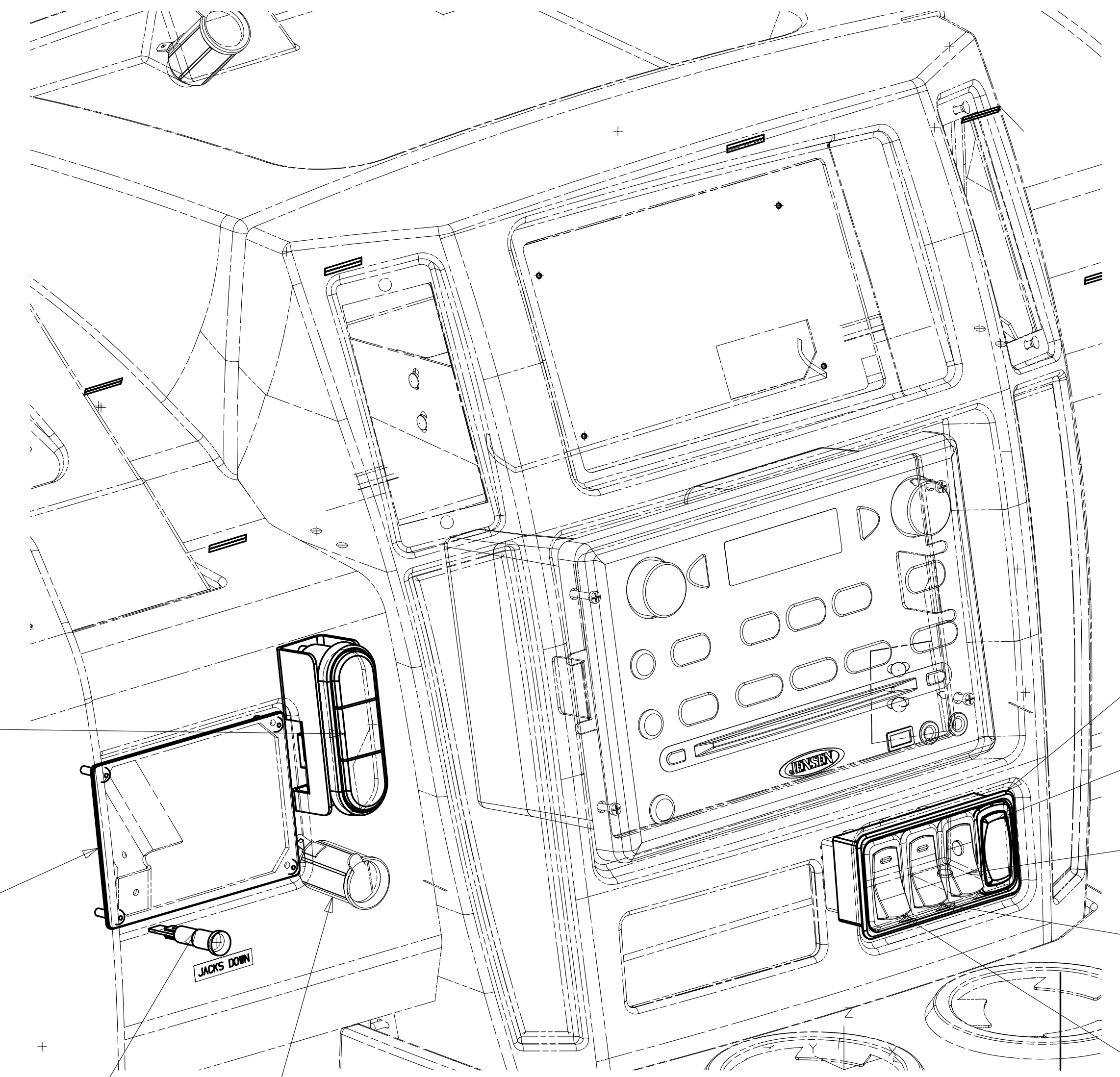
DETAIL DA

3 INFORMATION SWITCH
BEZEL-SWITCH
172173-01-CHT
CLAMP-BEZEL
172175-01-CHT
SCREW
G11-08-08U (2)

1A4 PLATE
134149-01-CHT
APPLIQUE
156292-11-CHT
SCREW
G11-08-12U (4)

4 5 LIGHT ASM-INDICATOR,RED
150237-01-000
LABEL-JACKS DOWN
133533-01-CHT

RECEPTACLE-12V
111414-01-000



PANEL-SWITCH
174834-03-CHT

SWITCH-BLANK
145754-01-CHT

SWITCH-RADIO POWER
174757-12-CHT

SWITCH-REAR
AUTO HEATER
174757-28-CHT

SWITCH-DEFROST FAN
174757-14-CHT
SWITCH-BLANK
145754-01-CHT
36N
2

DETAIL DB

- NOTES:
- 5 WIRING FROM LEVELING SYSTEM. SEE LEVELING SYSTEM INSTL FOR ADDITIONAL INFORMATION.
 - 4 CONNECT POSITIVE WIRE TO TERMINAL MARKED WITH A "+".
 - 3 CHASSIS SUPPLIED
 - 2 WITHOUT 36N
 - 1 WITHOUT 28F

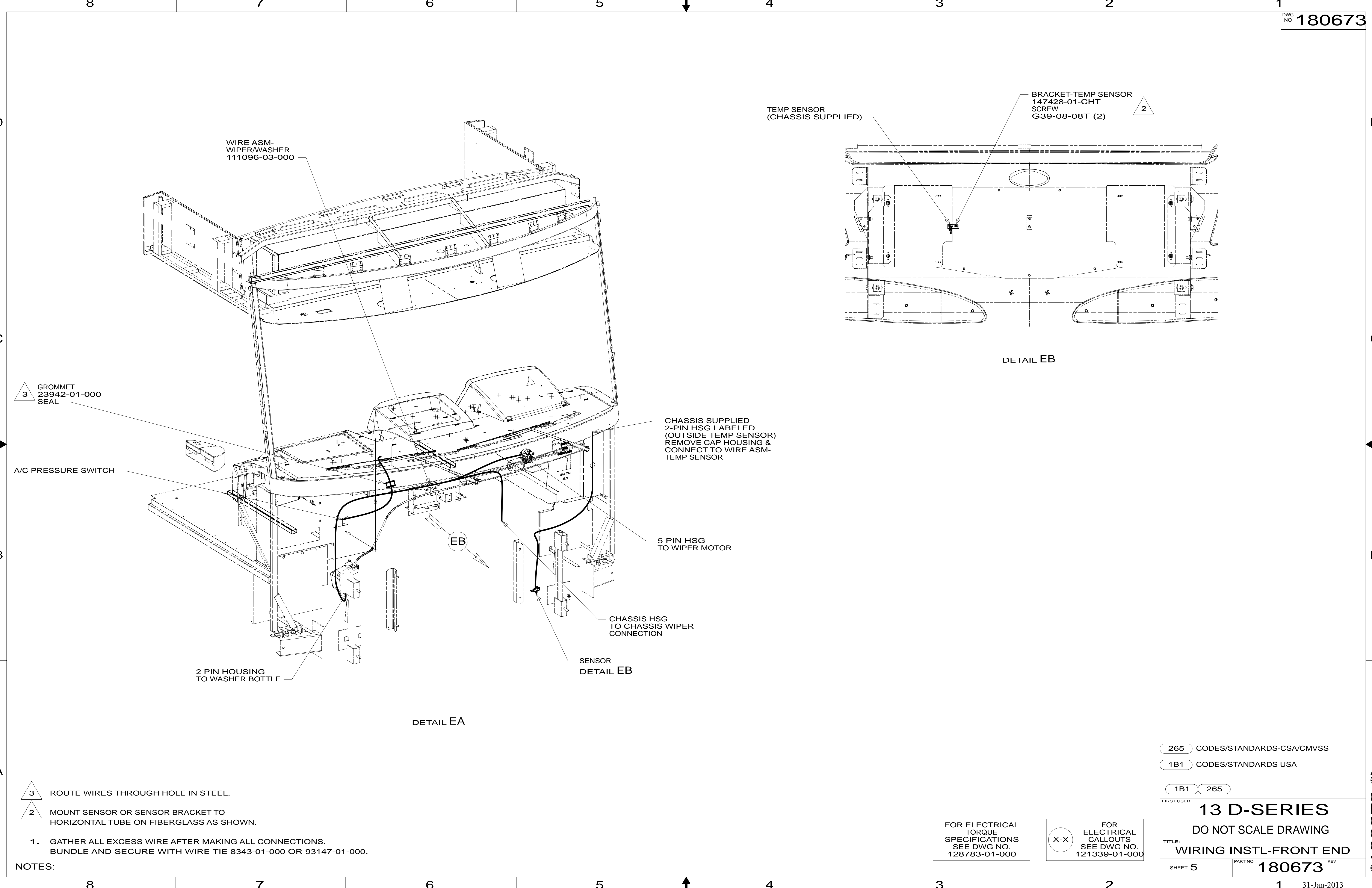
- 28F FRONT SHADE-POWERED
- 36N FANS-DEFROSTER, AUXILIARY
- 265 CODES/STANDARDS-CSA/CMVSS
- 1B1 CODES/STANDARDS USA

FIRST USED	
13 D-SERIES	
DO NOT SCALE DRAWING	
TITLE: WIRING INSTL-FRONT END	
SHEET 4	PART NO 180673 REV

FOR ELECTRICAL TORQUE SPECIFICATIONS SEE DWG NO. 128783-01-000

FOR ELECTRICAL CALLOUTS SEE DWG NO. 121339-01-000

* 180673 *



3 GROMMET 23942-01-000 SEAL

A/C PRESSURE SWITCH

2 PIN HOUSING TO WASHER BOTTLE

DETAIL EA

CHASSIS SUPPLIED 2-PIN HSG LABELED (OUTSIDE TEMP SENSOR) REMOVE CAP HOUSING & CONNECT TO WIRE ASM-TEMP SENSOR

5 PIN HSG TO WIPER MOTOR

CHASSIS HSG TO CHASSIS WIPER CONNECTION

SENSOR DETAIL EB

TEMP SENSOR (CHASSIS SUPPLIED)

BRACKET-TEMP SENSOR 147428-01-CHT SCREW G39-08-08T (2)

DETAIL EB

3 ROUTE WIRES THROUGH HOLE IN STEEL.

2 MOUNT SENSOR OR SENSOR BRACKET TO HORIZONTAL TUBE ON FIBERGLASS AS SHOWN.

1. GATHER ALL EXCESS WIRE AFTER MAKING ALL CONNECTIONS. BUNDLE AND SECURE WITH WIRE TIE 8343-01-000 OR 93147-01-000.

NOTES:

265 CODES/STANDARDS-CSA/CMVSS

1B1 CODES/STANDARDS USA

1B1 265

FIRST USED 13 D-SERIES

DO NOT SCALE DRAWING

TITLE: WIRING INSTL-FRONT END

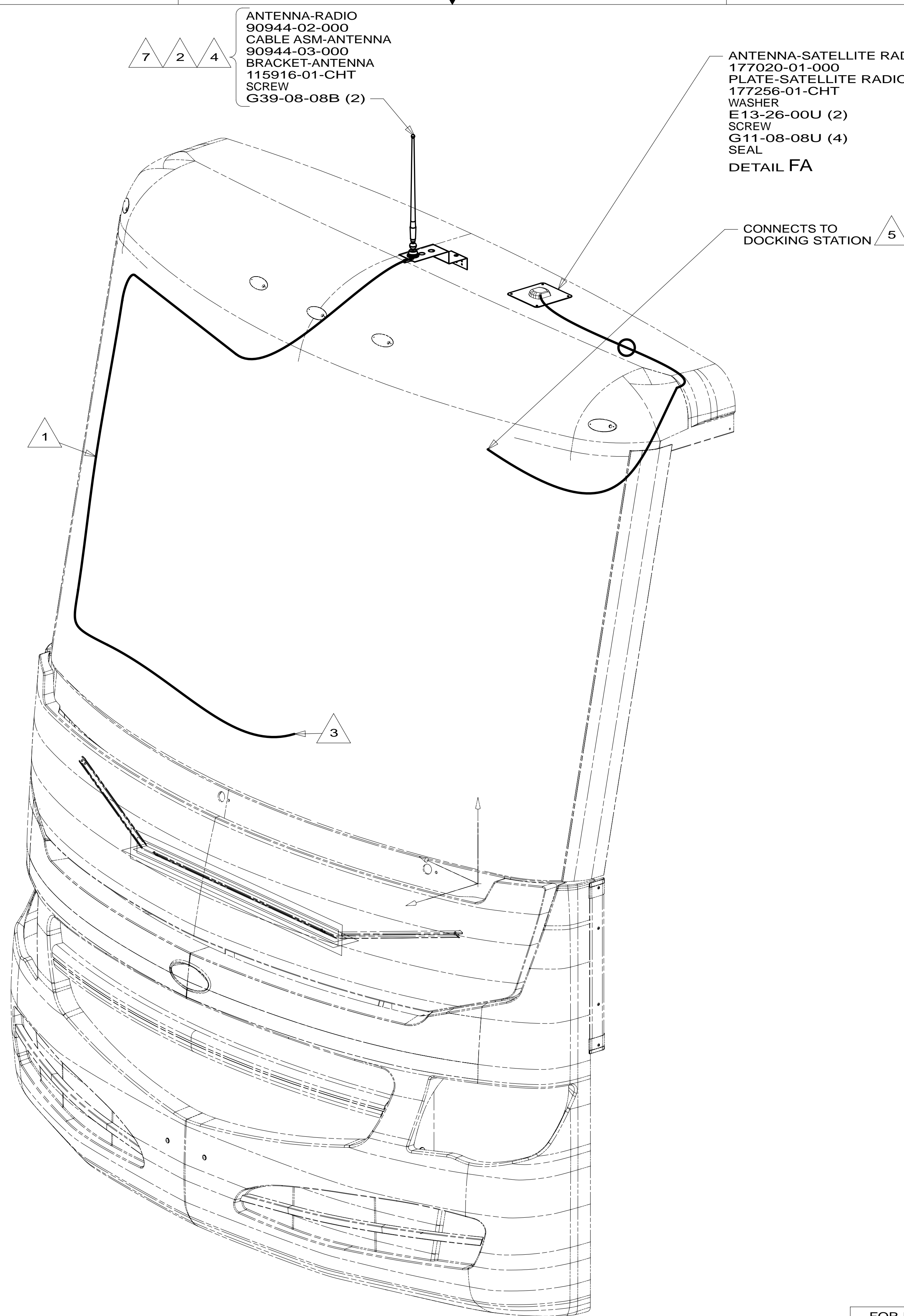
SHEET 5 PART NO 180673 REV

FOR ELECTRICAL TORQUE SPECIFICATIONS SEE DWG NO. 128783-01-000

FOR ELECTRICAL CALLOUTS SEE DWG NO. 121339-01-000

X-X

* 180673 * A

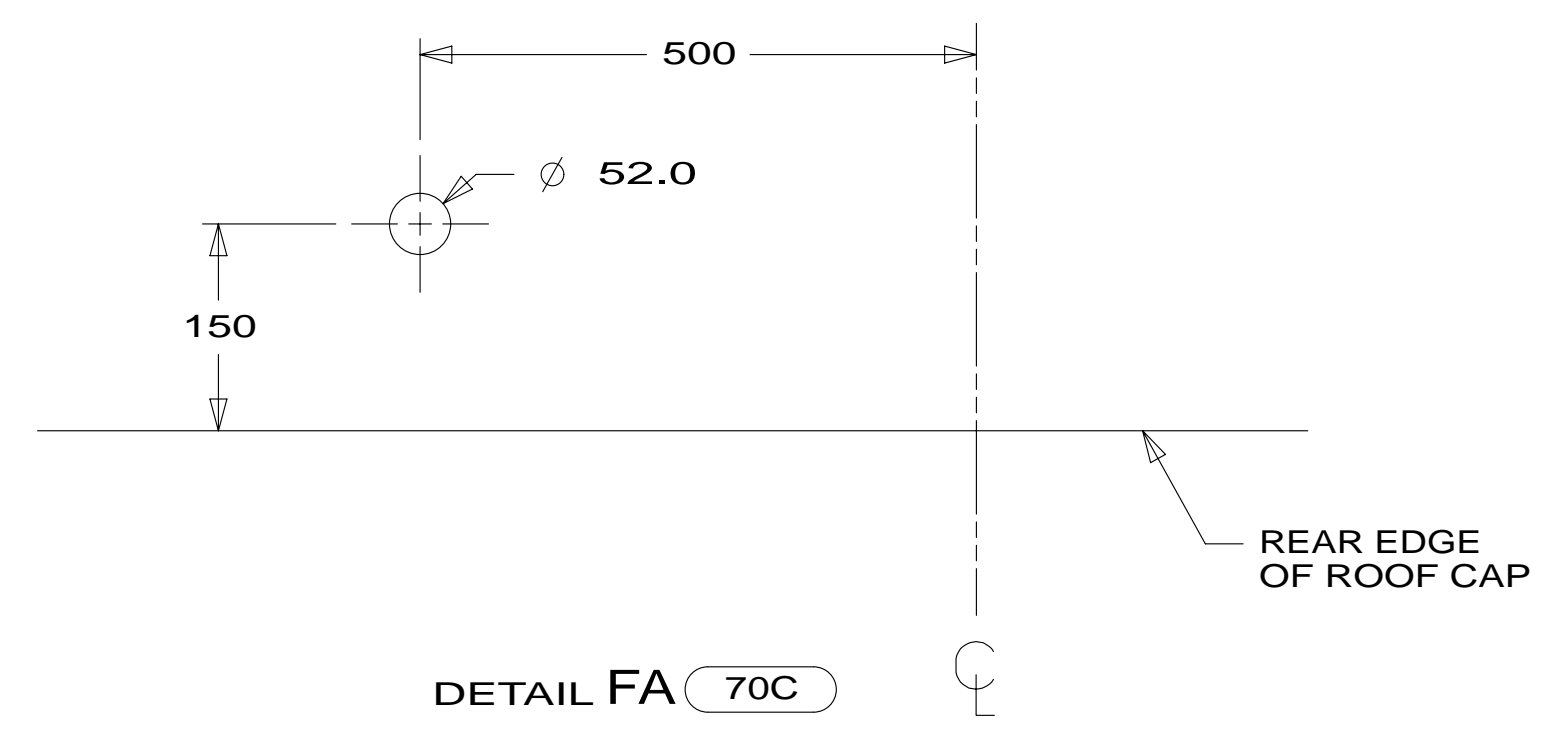


ANTENNA-RADIO
 90944-02-000
 CABLE ASM-ANTENNA
 90944-03-000
 BRACKET-ANTENNA
 115916-01-CHT
 SCREW
 G39-08-08B (2)

ANTENNA-SATELLITE RADIO
 177020-01-000
 PLATE-SATELLITE RADIO
 177256-01-CHT
 WASHER
 E13-26-00U (2)
 SCREW
 G11-08-08U (4)
 SEAL
 DETAIL FA

CONNECTS TO DOCKING STATION 5

70C 6



- NOTES:
- 7 REMOVE AND REINSTALL AFTER PAINT.
 - 6 MOUNT ANTENNA SUCH THAT BASE IS SQUARE W/REAR OF ROOF CAP & HOLE IS DIRECTLY OVER HOLE IN FIBERGLASS. SEAL HOLE IN ROOF CAP, BASE AT SCREWS.
 - 5 SEE WIRING INSTL-FRONT END FOR ADDITIONAL INFORMATION.
 - 4 USE HOLE IN BRACKET AS GUIDE TO DRILL 13 DIAMETER HOLE IN FIBERGLASS.
 - 3 TO RADIO.
 - 2 SEAL AROUND ANTENNA BASE.
 - 1 ROUTE CABLE ALONG A-POST, UNDER TRIM COVER.

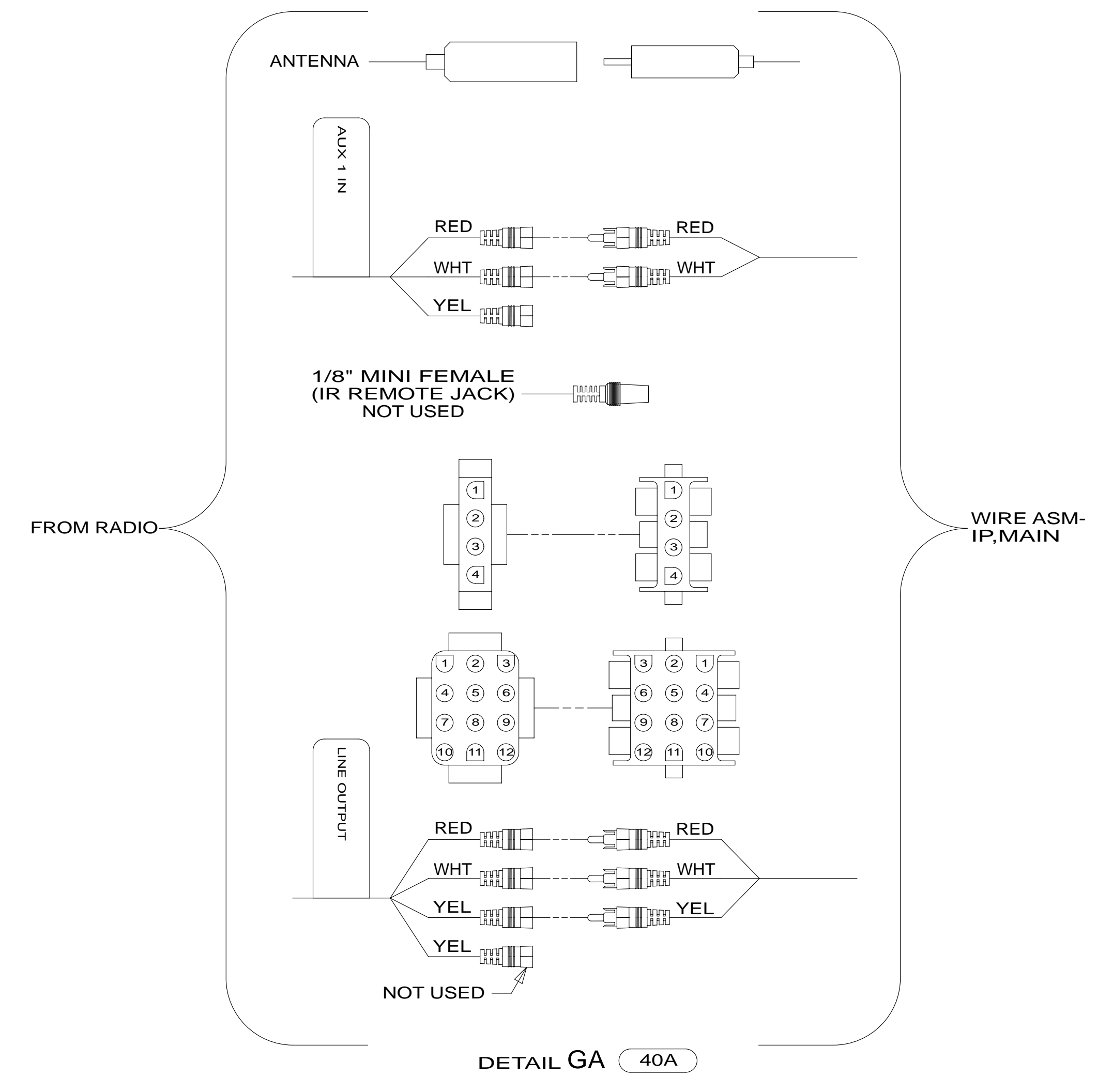
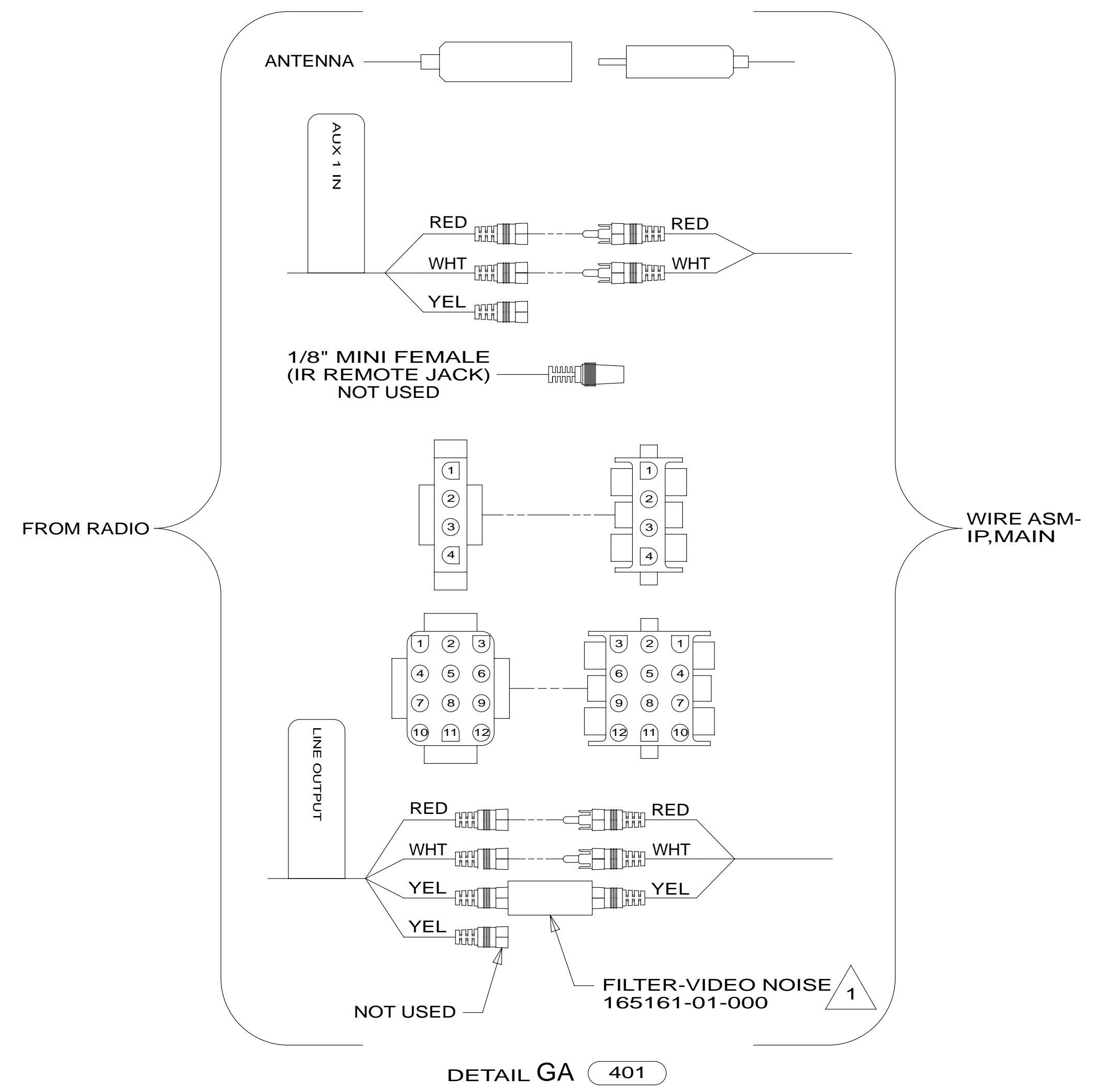
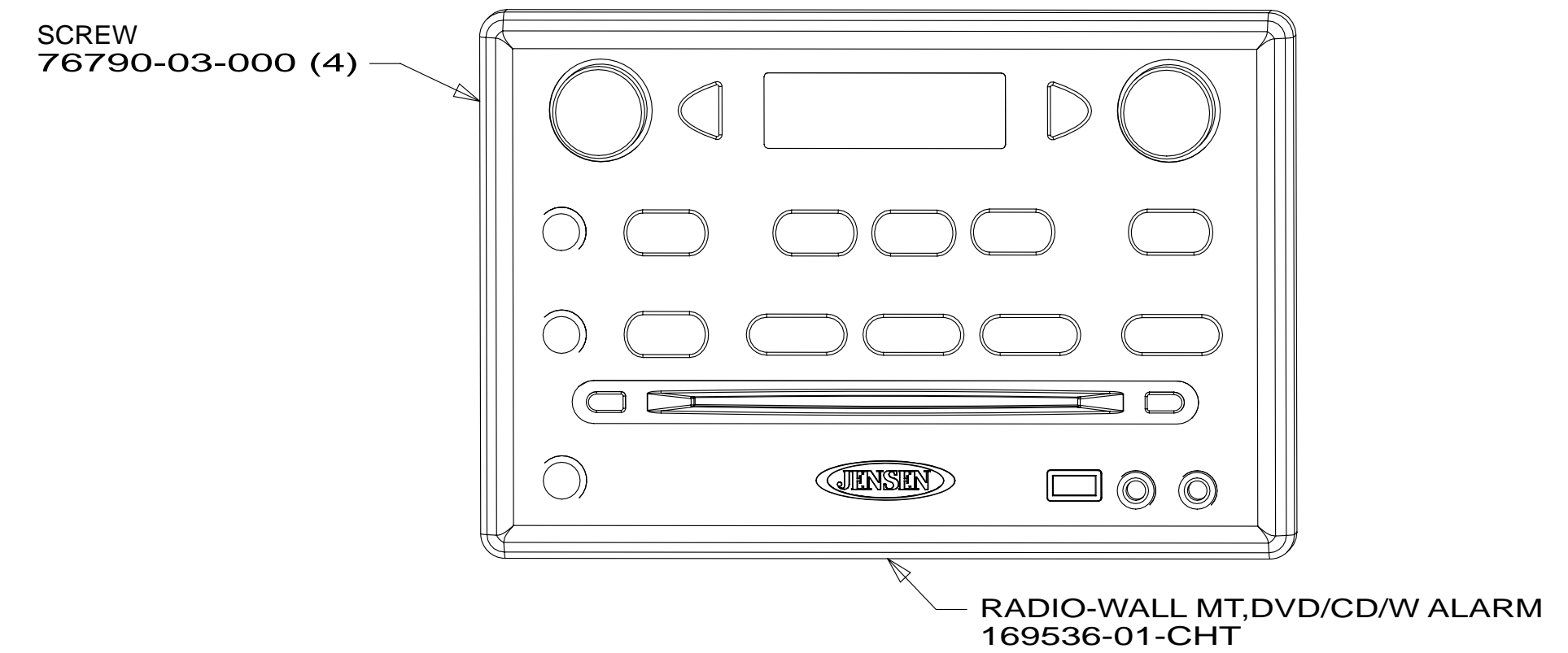
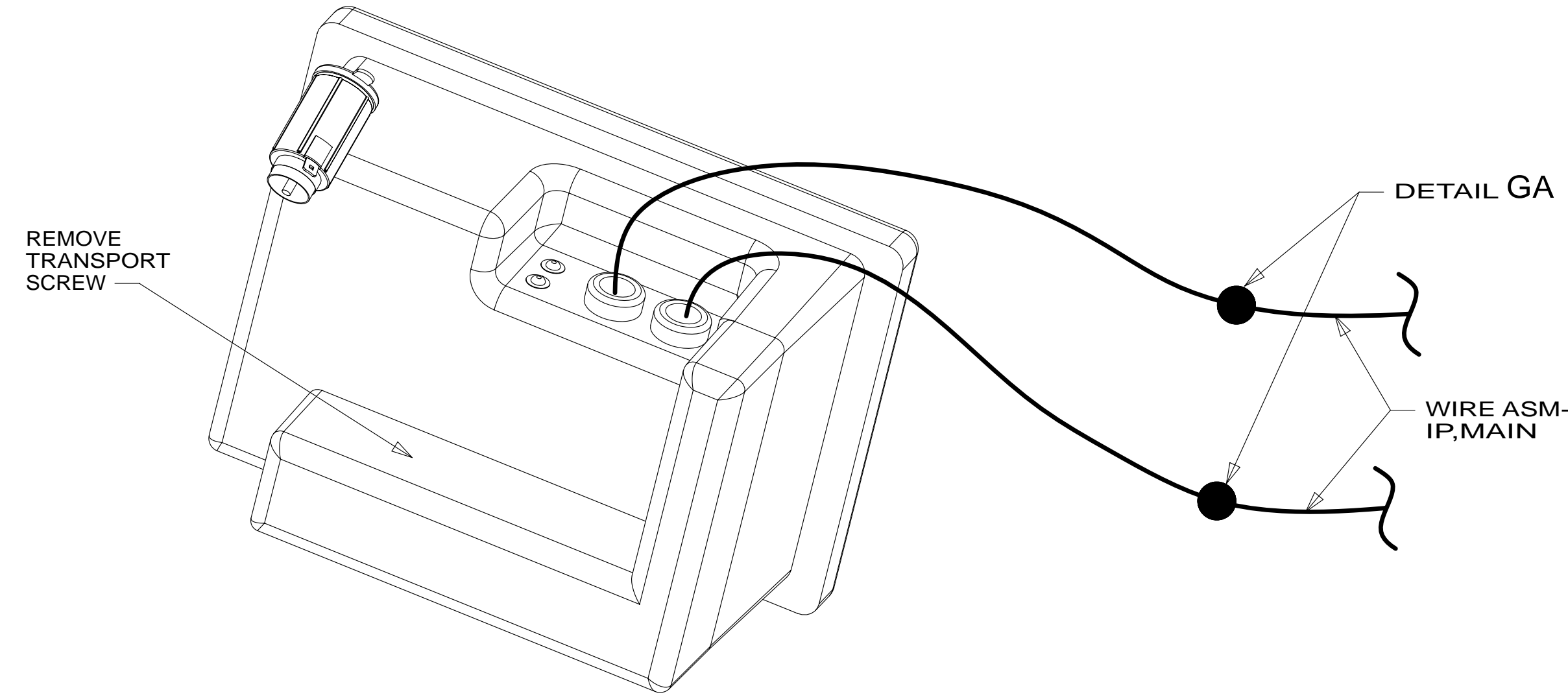
- 70C RADIO - SATELLITE
- 265 CODES/STANDARDS-CSA/CMVSS
- 1B1 CODES/STANDARDS USA

FIRST USED	13 D-SERIES
DO NOT SCALE DRAWING	
TITLE: WIRING INSTL-FRONT END	
SHEET 6	PART NO 180673 REV
31-Jan-2013	

FOR ELECTRICAL TORQUE SPECIFICATIONS SEE DWG NO. 128783-01-000

FOR ELECTRICAL CALLOUTS SEE DWG NO. 121339-01-000

* 180673 * A



1 CONNECTS IN-LINE OF YELLOW VIDEO CABLE. WRAP BOTH ENDS OF FILTER CONNECTIONS WITH TAPE 8363-01-000 TO SECURE FILTER TO WIRE ASM.

FOR ELECTRICAL TORQUE SPECIFICATIONS SEE DWG NO. 128783-01-000

FOR ELECTRICAL CALLOUTS SEE DWG NO. 121339-01-000

- 401 INVERTER-DC/AC, 1000 WATT
- 40A INVERTER-DC/AC WITHOUT
- 255 RADIO/AM/FM/CD/DVD PLAYER
- 265 CODES/STANDARDS-CSA/CMVSS
- 1B1 CODES/STANDARDS USA

1B1 265 255

FIRST USED

13 D-SERIES

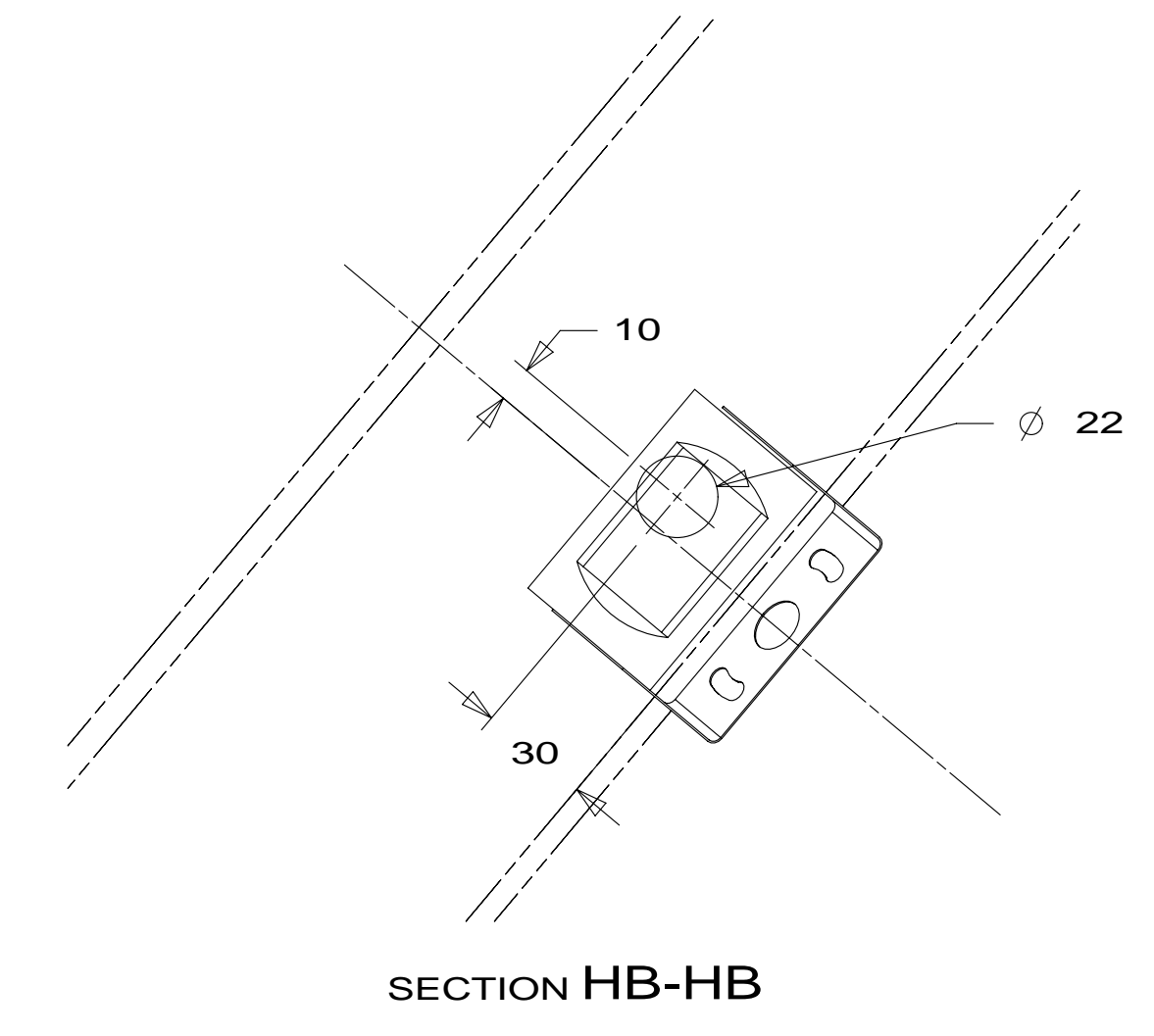
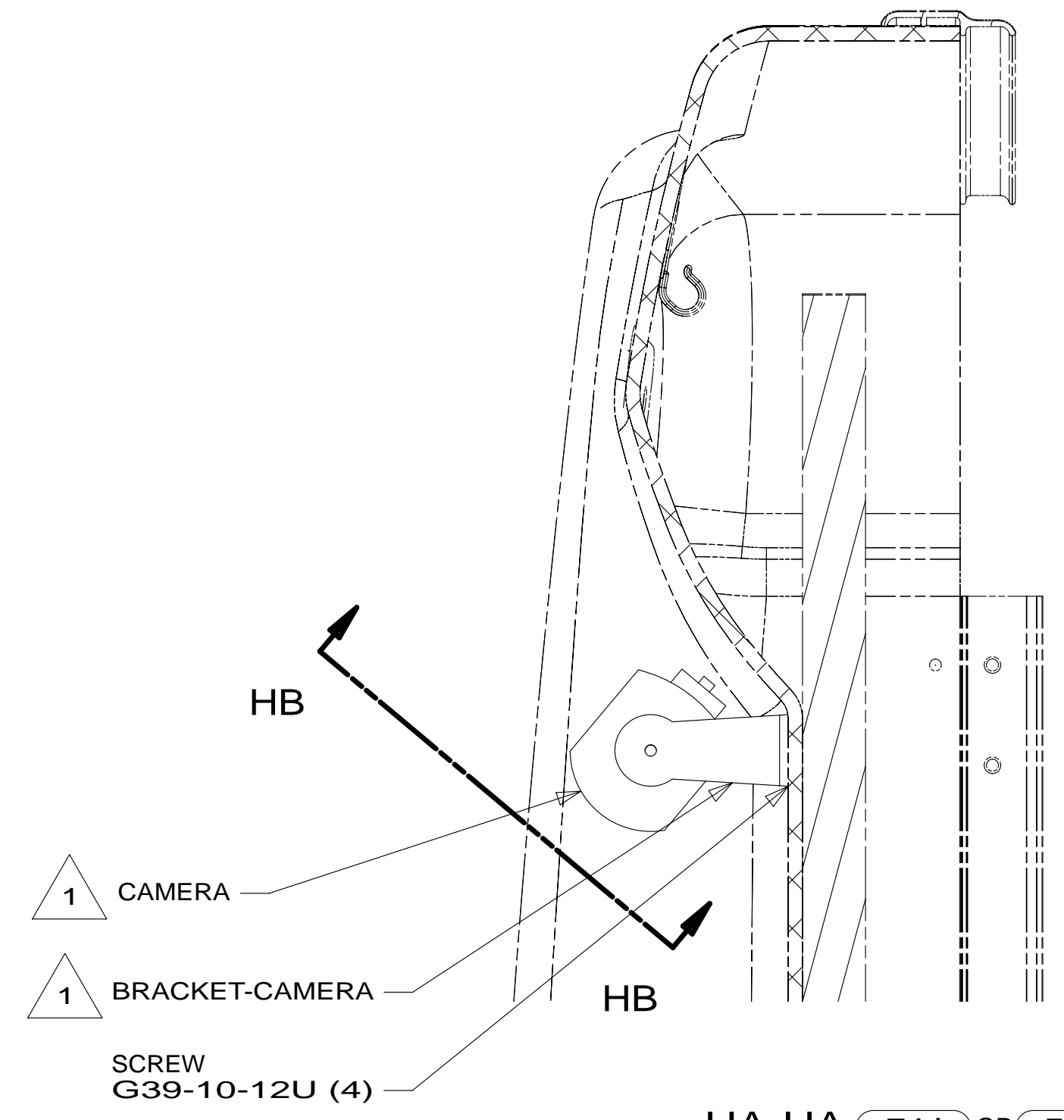
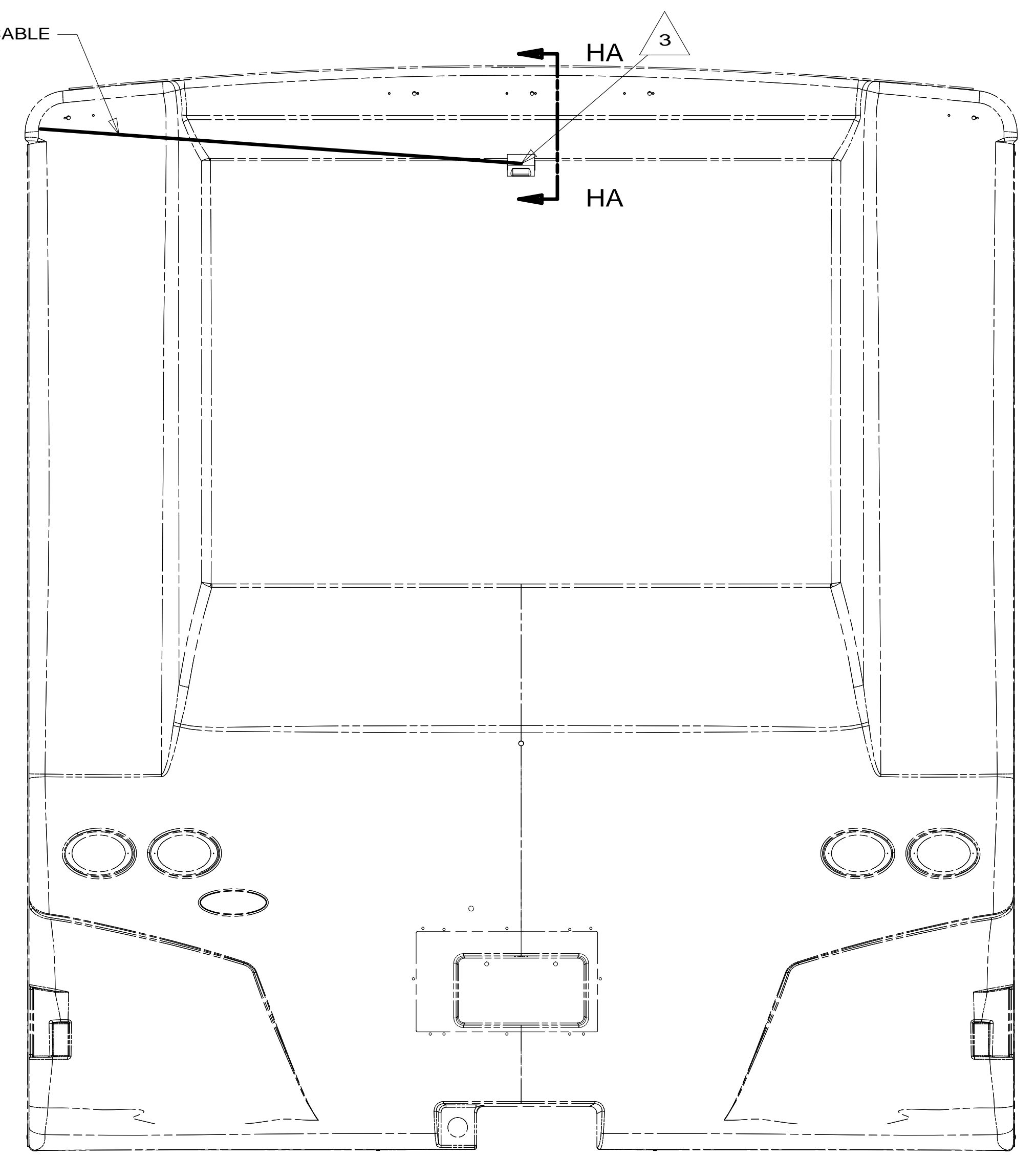
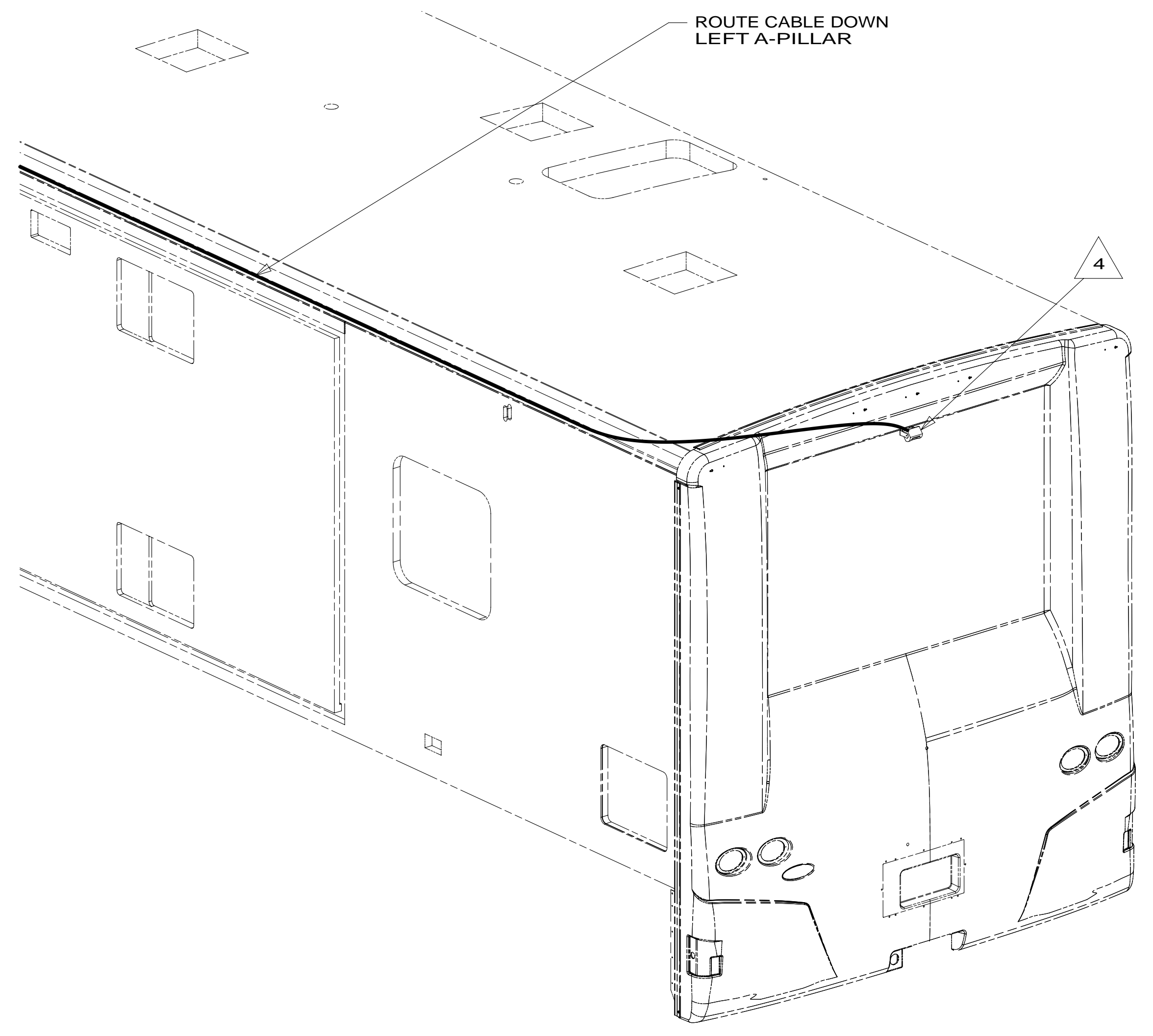
DO NOT SCALE DRAWING

TITLE: **WIRING INSTL-FRONT END**

SHEET 7 PART NO **180673** REV

31-Jan-2013

* 180673 * A



- NOTES:
- 4 ALIGN CAMERA TO CENTER OF BACKWALL AND ADJUST SO BACKWALL IS JUST VISIBLE.
 - 3 END STANDARD CABLE IN THIS AREA ON UNITS WITHOUT MONITOR (1A5) (1H4)
 - 2 RUN CABLE THRU LEFT-HAND COVE TO REAR OF UNIT. STANDARD ON ALL UNITS WITH (1A5) (1H4) (74J)
 - 1 PARTS SUPPLIED WITH CAMERA KIT P/N 177259-02-CHT (74J) OR (74C)

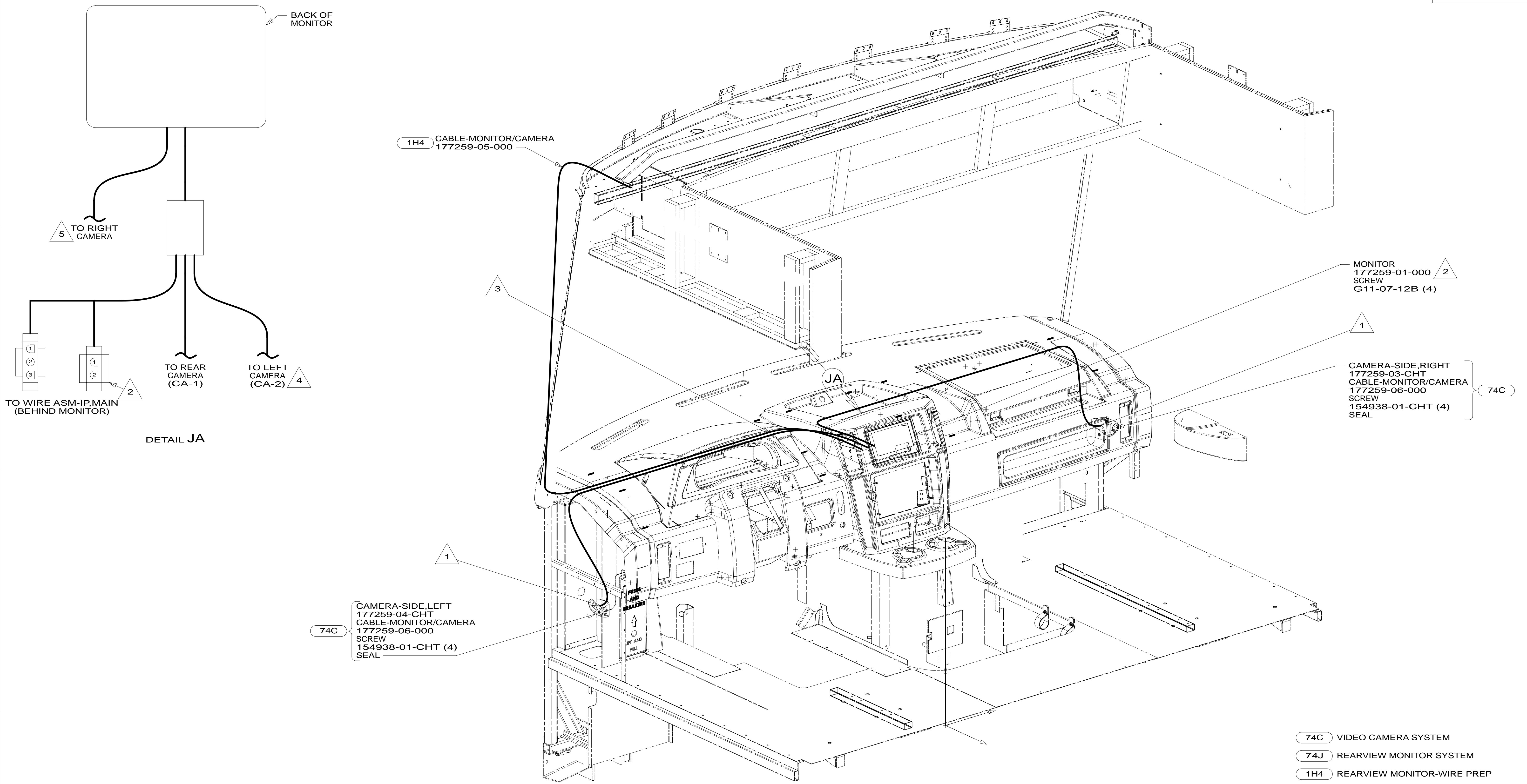
- (74C) VIDEO CAMERA SYSTEM
- (74J) REARVIEW MONITOR SYSTEM
- (1H4) REARVIEW MONITOR-WIRE PREP
- (1A5) REARVIEW MONITOR SYSTEM W/O
- (265) CODES/STANDARDS-CSA/CMVSS
- (1B1) CODES/STANDARDS USA

FIRST USED	
13 D-SERIES	
DO NOT SCALE DRAWING	
TITLE: WIRING INSTL-FRONT END	
SHEET 8	PART NO. 180673 REV
31-Jan-2013	

FOR ELECTRICAL TORQUE SPECIFICATIONS SEE DWG NO. 128783-01-000

FOR ELECTRICAL CALLOUTS SEE DWG NO. 121339-01-000

* 180673 *



- NOTES:
- 5 MARK RIGHT CABLE WITH WHITE TAPE 900000-08-000 NEXT TO CONNECTOR.
 - 4 MARK LEFT CABLE WITH YELLOW TAPE 900000-07-000 NEXT TO CONNECTOR.
 - 3 END CABLE IN THIS AREA ON UNITS W/O MONITOR. (1A5) (1H4)
 - 2 DO NOT CONNECT 2-PIN HOUSING TO IP.MAIN ON UNITS WITH (74J)
CONNECT FOUR SIDE CAMERA TRIGGERS ONLY WITH (74C)
 - 1 CONNECT CAMERA THRU HOLE IN SIDEWALL, PUSH CONNECTOR BACK THRU SIDEWALL, AND SEAL HOLE.

- (74C) VIDEO CAMERA SYSTEM
- (74J) REARVIEW MONITOR SYSTEM
- (1H4) REARVIEW MONITOR-WIRE PREP
- (1A5) REARVIEW MONITOR SYSTEM W/O
- (265) CODES/STANDARDS-CSA/CMVSS
- (1B1) CODES/STANDARDS USA

FIRST USED

13 D-SERIES

DO NOT SCALE DRAWING

TITLE: **WIRING INSTL-FRONT END**

SHEET 9 PART NO. **180673** REV

31-Jan-2013

FOR ELECTRICAL TORQUE SPECIFICATIONS SEE DWG NO. 128783-01-000

FOR ELECTRICAL CALLOUTS SEE DWG NO. 121339-01-000

* 180673 *