



DANGER

Danger of electrical shock, burns or death. Always remove all power sources before attempting any repair, service or diagnostic work. Power can be present from shore power, generator, inverter or battery. All power sources must be disabled and secured before performing any service.

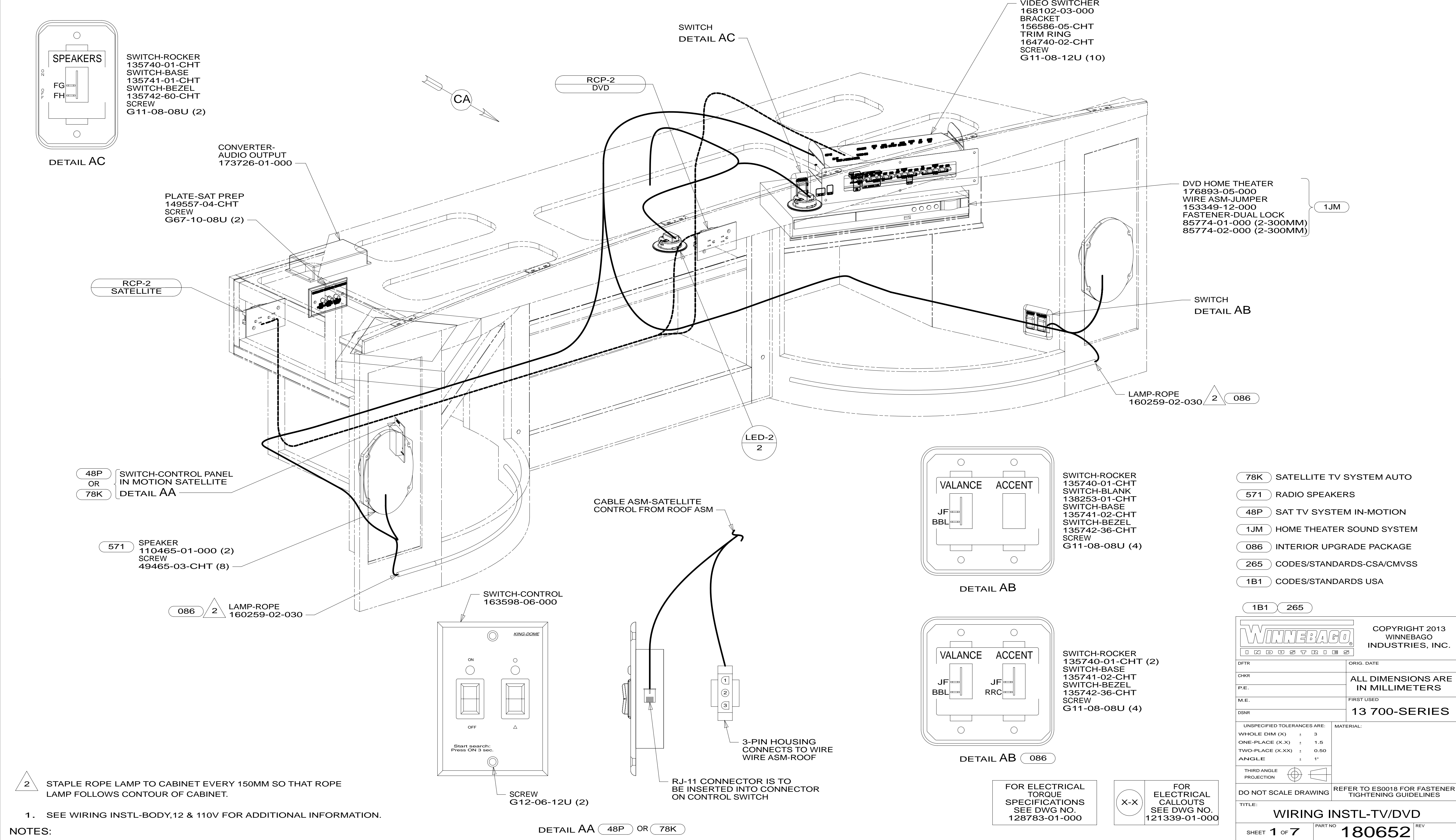


CAUTION

If you lack the skills, tools or equipment to perform diagnostic or repair work leave such work to an authorized Winnebago Industries dealer or other qualified shop.

DRAWING NO.	MODEL	SHEETS
180652-01	728T	-----
180652-02	730C	4,5,6
180652-03	727K	1,2,3,7

RELEASE	REV/DATE	DWG NO	180652
REV ZONE	REVISION RECORD	DATE	DTR-ORIG



2 STAPLE ROPE LAMP TO CABINET EVERY 150MM SO THAT ROPE LAMP FOLLOWS CONTOUR OF CABINET.

1. SEE WIRING INSTL-BODY,12 & 110V FOR ADDITIONAL INFORMATION.

NOTES:

- 78K SATELLITE TV SYSTEM AUTO
- 571 RADIO SPEAKERS
- 48P SAT TV SYSTEM IN-MOTION
- 1JM HOME THEATER SOUND SYSTEM
- 086 INTERIOR UPGRADE PACKAGE
- 265 CODES/STANDARDS-CSA/CMVSS
- 1B1 CODES/STANDARDS USA

		COPYRIGHT 2013 WINNEBAGO INDUSTRIES, INC.
DTR	ORIG. DATE	
CHKR	ALL DIMENSIONS ARE IN MILLIMETERS	
P.E.		
M.E.	FIRST USED	
DSNR	13 700-SERIES	
UNSPECIFIED TOLERANCES ARE:		MATERIAL:
WHOLE DIM (X)	: 3	
ONE-PLACE (X.X)	: 1.5	
TWO-PLACE (X.XX)	: 0.50	
ANGLE	: 1°	
THIRD ANGLE PROJECTION		
DO NOT SCALE DRAWING		REFER TO ES0018 FOR FASTENER TIGHTENING GUIDELINES
TITLE: WIRING INSTL-TV/DVD		
SHEET 1 OF 7	PART NO	180652
REF:	1	23-Apr-2013

FOR ELECTRICAL TORQUE SPECIFICATIONS SEE DWG NO. 128783-01-000

X-X FOR ELECTRICAL CALLOUTS SEE DWG NO. 121339-01-000

* 180652 *

TV-26", FLAT
 PANEL LED, HDTV
 179870-01-000
 SCREW
 (SUPPLIED WITH TV)
 AC POWER SUPPLY
 170909-04-000

BA

BB

TAPE-FOAM, DBL COATED
 76322-21-000 (530 MM) (2) 2

TAPE-FOAM, DBL COATED
 76322-21-000 (210 MM) (2) 2

WIRES/CABLES ROUTED
 OUT OF SIDEWALL IN
 THIS AREA

TIE-WIRE, MOUNT
 155366-01-000
 TIE-WIRE
 8343-03-000

TIE-WIRE
 8343-02-000 1

VIEW BB

MOUNT TV BRACKET SO
 THAT SLOT IN BRACKET
 LINES UP WITH SLOT
 IN SIDEWALL

VIEW BA

2 CLEAN AND APPLY ADHESIVE PROMOTOR 87211-01-000
 TO BOTH SURFACES AND BOND WHERE BRACKET CONTACTS
 PLASTIC TV CASE.

1 USE HOLES ON PLATE-MOUNTING, TV TO ATTACH WIRE
 ASM TO PLATE-MOUNTING, TV WITH WIRE TIES.

NOTES:

265 CODES/STANDARDS-CSA/CMVSS

1B1 CODES/STANDARDS USA

1B1 265

FIRST USED
13 700-SERIES

DO NOT SCALE DRAWING

TITLE:
WIRING INSTL-TV/DVD

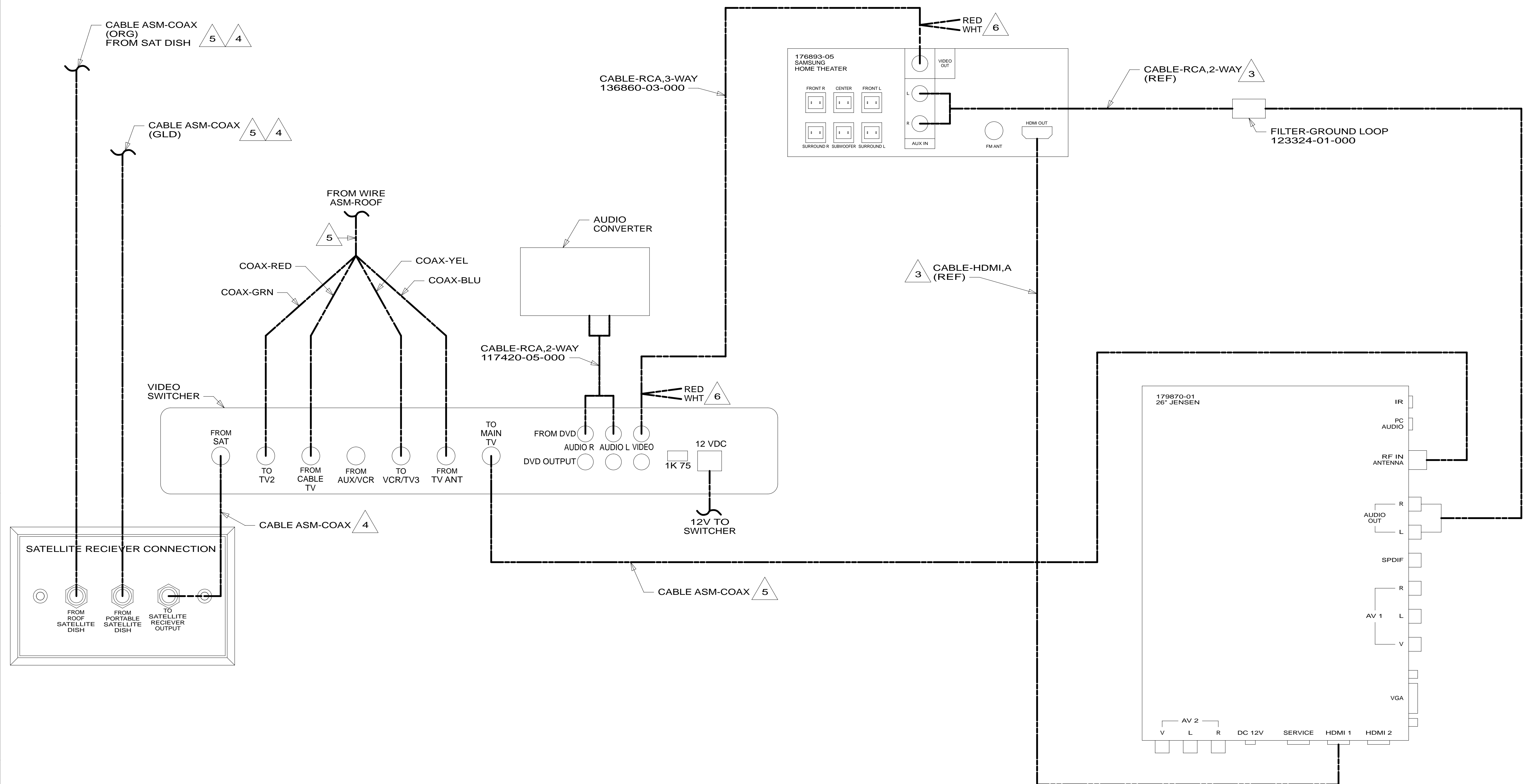
SHEET 2 PART NO **180652** REV

FOR ELECTRICAL
 TORQUE
 SPECIFICATIONS
 SEE DWG NO.
 128783-01-000

FOR ELECTRICAL
 CALLOUTS
 SEE DWG NO.
 121339-01-000

X-X

* 180652 * A



- 6 RCA CONNECTOR IS NOT USED. TAPE BACK TO CABLE.
- 5 COAX IS FROM WIRE ASM-ROOF.
- 4 CONNECTS TO BACK SIDE OF PLATE.
- 3 CABLE IS ROUTED IN ROOF.

- 2. ALL CONNECTIONS ARE SHOWN FROM BACKSIDE OF COMPONENTS.
- 1. SEE WIRING INSTL-BODY,12V FOR ADDITIONAL INFORMATION.

NOTES:

265 CODES/STANDARDS-CSA/CMVSS
 1B1 CODES/STANDARDS USA

1B1 265

FIRST USED
13 700-SERIES

DO NOT SCALE DRAWING

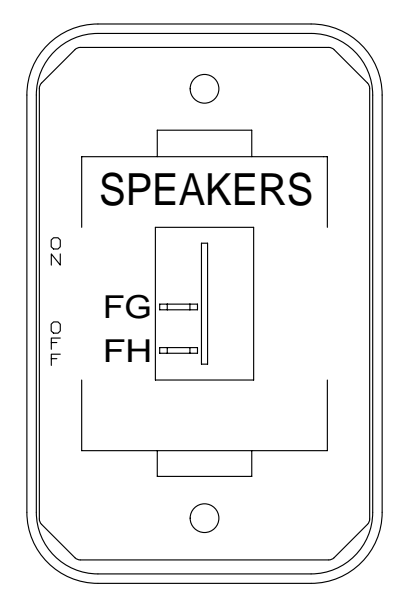
TITLE:
WIRING INSTL-TV/DVD

SHEET 3 PART NO **180652** REV

FOR ELECTRICAL TORQUE SPECIFICATIONS SEE DWG NO. 128783-01-000

FOR ELECTRICAL CALLOUTS SEE DWG NO. 121339-01-000

* 180652 *



SWITCH-ROCKER
135740-01-CHT
SWITCH-BASE
135741-01-CHT
SWITCH-BEZEL
135742-36-CHT
SCREW
G11-08-08U (2)

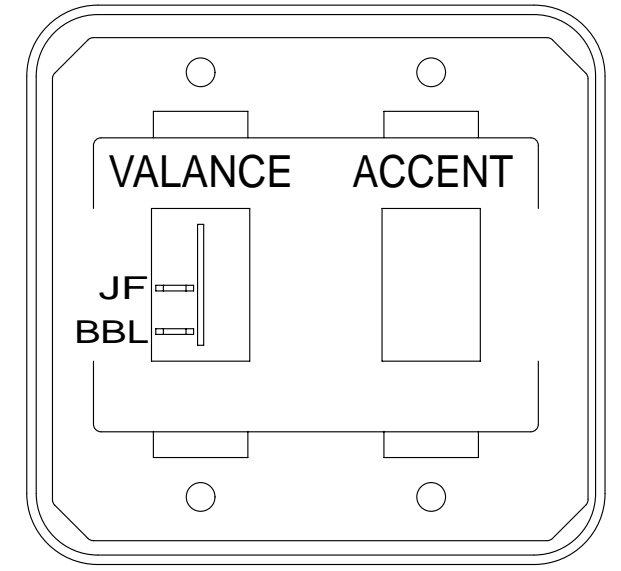
DETAIL DC

CONVERTER-AUDIO OUTPUT
173726-01-000

COAX (UNMARKED)
CONNECTS TO TV

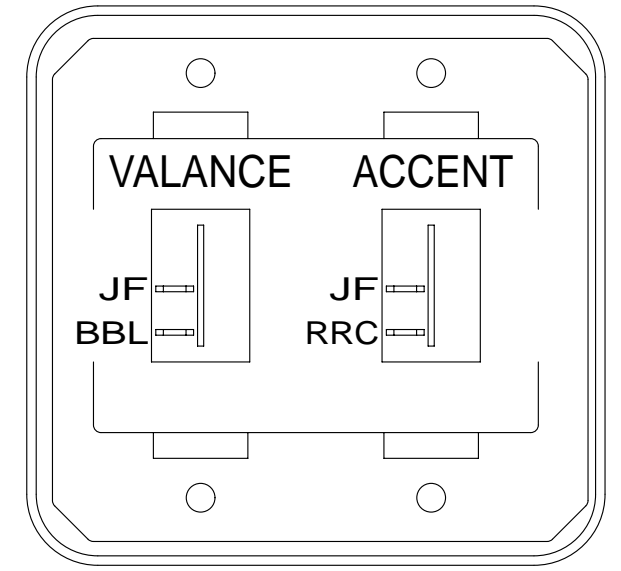
SWITCH
DETAIL DC

VIDEO SWITCHER
168102-03-000
BRACKET
156586-05-CHT
TRIM RING
164740-02-CHT
SCREW
G11-08-12U (10)



SWITCH-ROCKER
135740-01-CHT
SWITCH-BLANK
138253-01-CHT
SWITCH-BASE
135741-02-CHT
SWITCH-BEZEL
135742-36-CHT
SCREW
G11-08-08U (4)

DETAIL DB



SWITCH-ROCKER
135740-01-CHT (2)
SWITCH-BASE
135741-02-CHT
SWITCH-BEZEL
135742-36-CHT
SCREW
G11-08-08U (4)

DETAIL DB 086

PLATE-SAT PREP
149557-04-CHT
SCREW
G67-10-08U (2)

CONNECTS TO
WIRE ASM-ROOF

RCP-2
SATELLITE

SPEAKER-ROUND
160868-01-CHT (2)
SCREW
G11-08-08B (8)

48P
OR
78K
SWITCH-CONTROL PANEL
IN MOTION SATELLITE
DETAIL DA

571 SPEAKER
110465-01-000 (2)
SCREW
49465-03-CHT (8)

086 2 LAMP-ROPE
160259-02-030

RCP-2
TV

LED-2
2

TV-28" FLAT
PANEL ELED,HDTV
186599-01-000
SCREW
OMG02B-04-010 (2)
(STAND SUPPORT)
SCREW
VESA MOUNT
(SUPPLIED W/TV)

SPEAKER-ROUND
179783-01-CHT
SCREW
G1208-12-170 (4)

LAMP-ROPE
160259-02-030 2 086

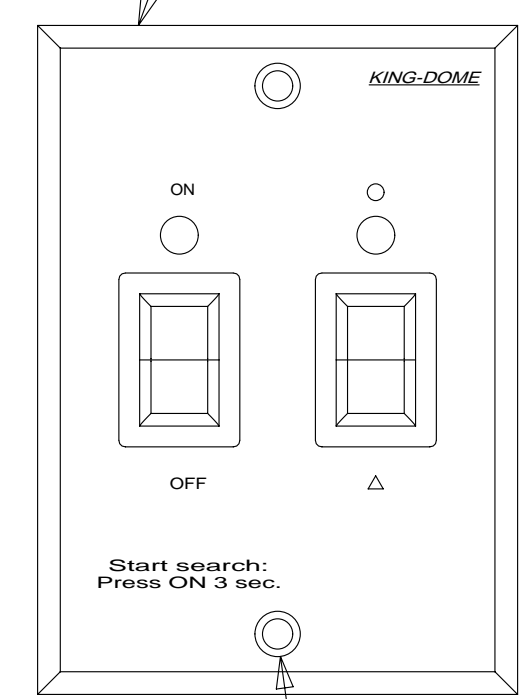
SWITCH
DETAIL DB

DVD HOME THEATER
176893-05-000
WIRE ASM-JUMPER
153349-12-000
FASTENER-DUAL LOCK
85774-01-000 (2-300MM)
85774-02-000 (2-300MM)

1JM

CABLE ASM-SATELLITE
CONTROL FROM ROOF ASM

SWITCH-CONTROL
163598-06-000



SCREW
G12-06-12U (2)

DETAIL DA 48P OR 78K

3-PIN HOUSING
CONNECTS TO WIRE
WIRE ASM-ROOF

RJ-11 CONNECTOR IS TO
BE INSERTED INTO CONNECTOR
ON CONTROL SWITCH

FOR ELECTRICAL
TORQUE
SPECIFICATIONS
SEE DWG NO.
128783-01-000

FOR
ELECTRICAL
CALLOUTS
SEE DWG NO.
121339-01-000

- 78K SATELLITE TV SYSTEM AUTO
- 571 RADIO SPEAKERS
- 48P SAT TV SYSTEM IN-MOTION
- 1JM HOME THEATER SOUND SYSTEM
- 086 INTERIOR UPGRADE PACKAGE
- 61E TV(FRONT)-26" COLOR STEREO
- 265 CODES/STANDARDS-CSA/CMVSS
- 1B1 CODES/STANDARDS USA

1B1 265 61E

FIRST USED
13 700-SERIES

DO NOT SCALE DRAWING

TITLE:
WIRING INSTL-TV/DVD

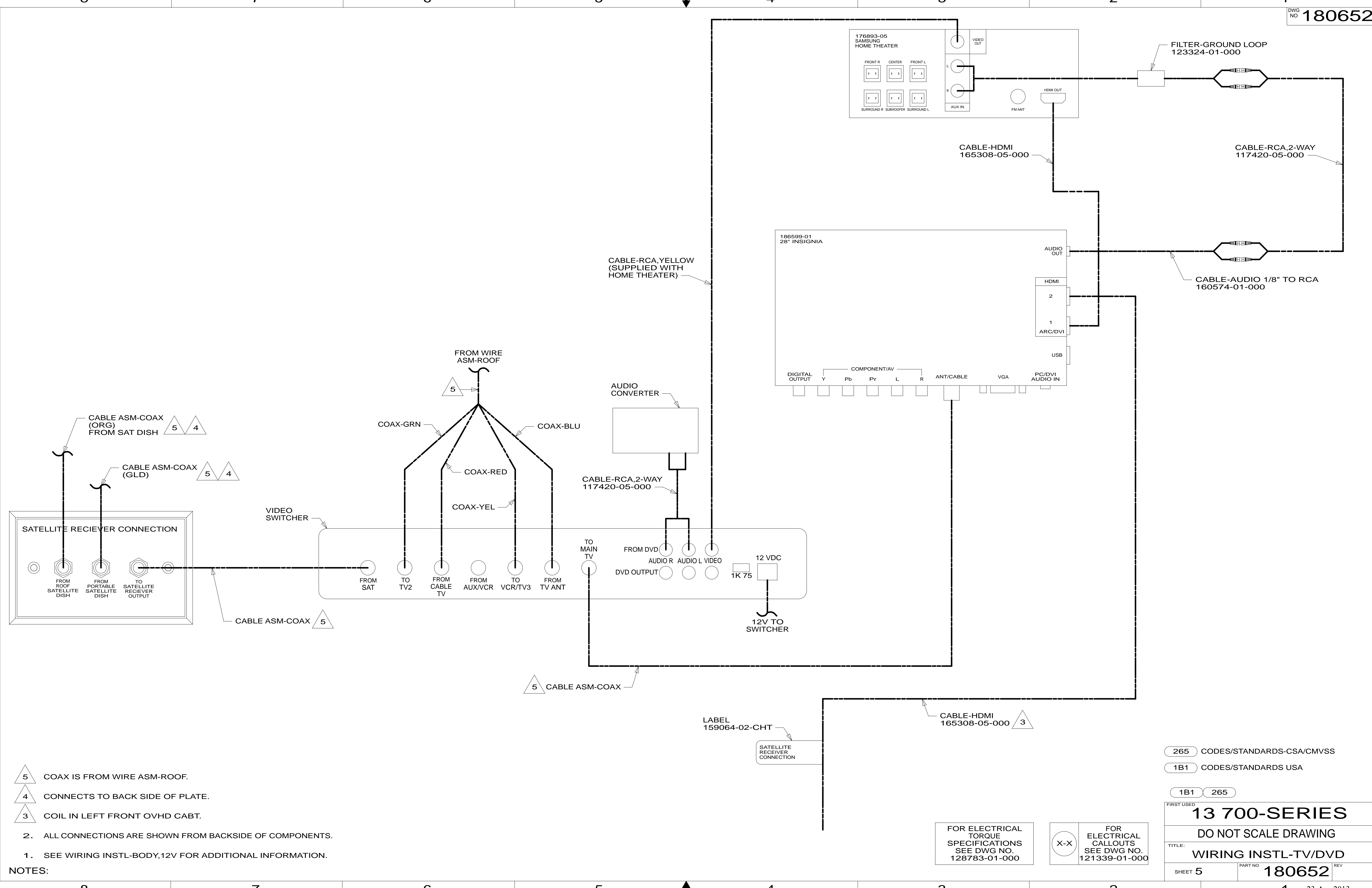
SHEET 4 PART NO **180652** REV

2 STAPLE ROPE LAMP TO CABINET EVERY 150MM SO THAT ROPE LAMP FOLLOWS CONTOUR OF CABINET.

1. SEE WIRING INSTL-BODY,12 & 110V FOR ADDITIONAL INFORMATION.

NOTES:

* 180652



- NOTES:
- 5 COAX IS FROM WIRE ASM-ROOF.
 - 4 CONNECTS TO BACK SIDE OF PLATE.
 - 3 COIL IN LEFT FRONT OVHD CABT.
 - 2. ALL CONNECTIONS ARE SHOWN FROM BACKSIDE OF COMPONENTS.
 - 1. SEE WIRING INSTL-BODY, 12V FOR ADDITIONAL INFORMATION.

265	CODES/STANDARDS-CSA/CMVSS
1B1	CODES/STANDARDS USA
1B1	265
FIRST USED	
13 700-SERIES	
DO NOT SCALE DRAWING	
TITLE: WIRING INSTL-TV/DVD	
SHEET 5	PART NO 180652 REV
23-Apr-2013	

FOR ELECTRICAL TORQUE SPECIFICATIONS SEE DWG NO. 128783-01-000

X-X

FOR ELECTRICAL CALLOUTS SEE DWG NO. 121339-01-000

* 180652

8

7

6

5

4

3

2

1

D

D

C

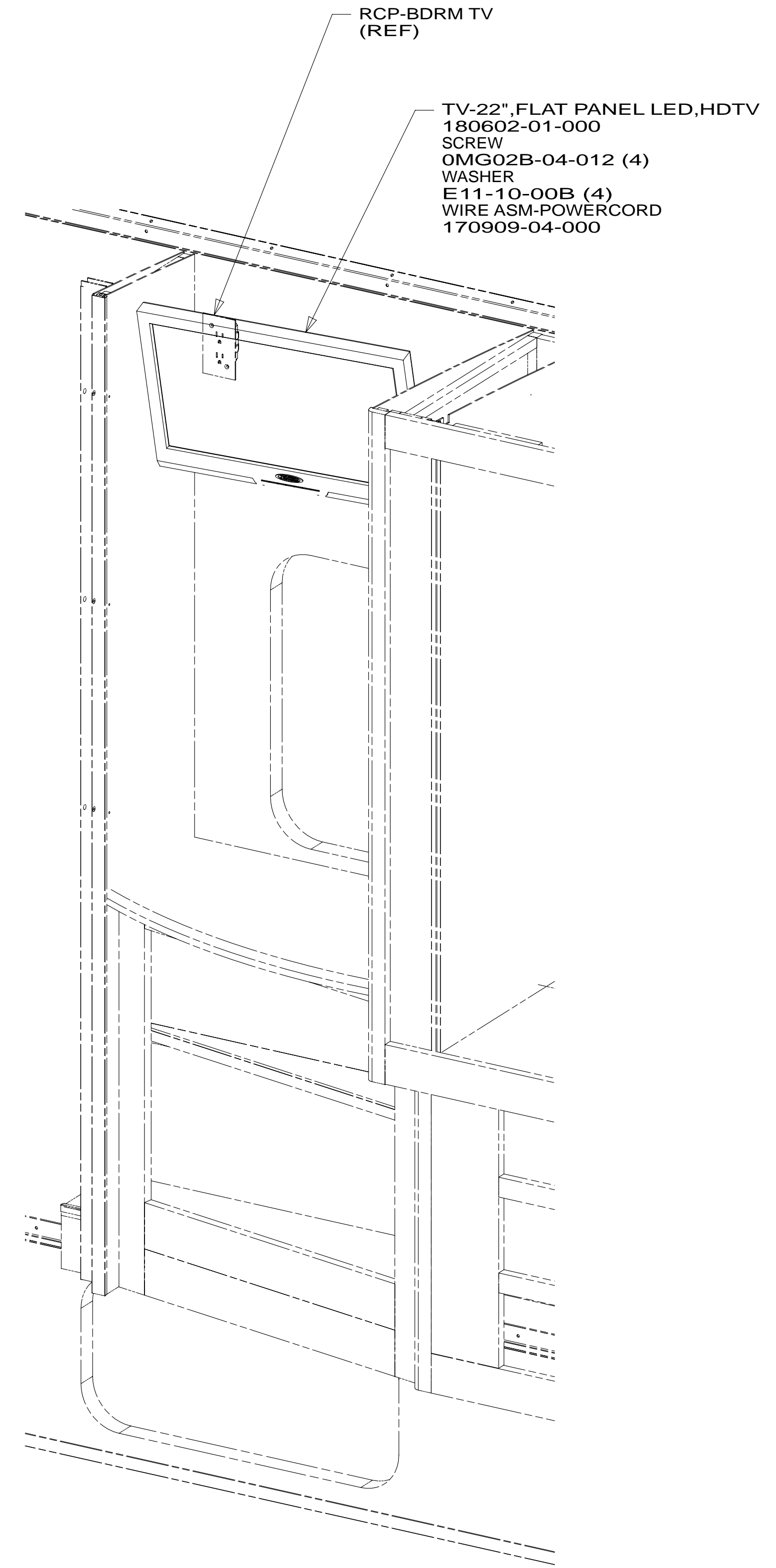
C

B

B

A

A



- 68B TV (REAR)DC 22" LCD W/REMOTE
- 265 CODES/STANDARDS-CSA/CMVSS
- 1B1 CODES/STANDARDS USA

1B1 265 68B

FIRST USED **13 700-SERIES**

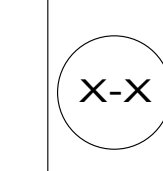
DO NOT SCALE DRAWING

TITLE: **WIRING INSTL-TV/DVD**

SHEET 6 PART NO **180652** REV

FOR ELECTRICAL TORQUE SPECIFICATIONS SEE DWG NO. 128783-01-000

FOR ELECTRICAL CALLOUTS SEE DWG NO. 121339-01-000



8

7

6

5

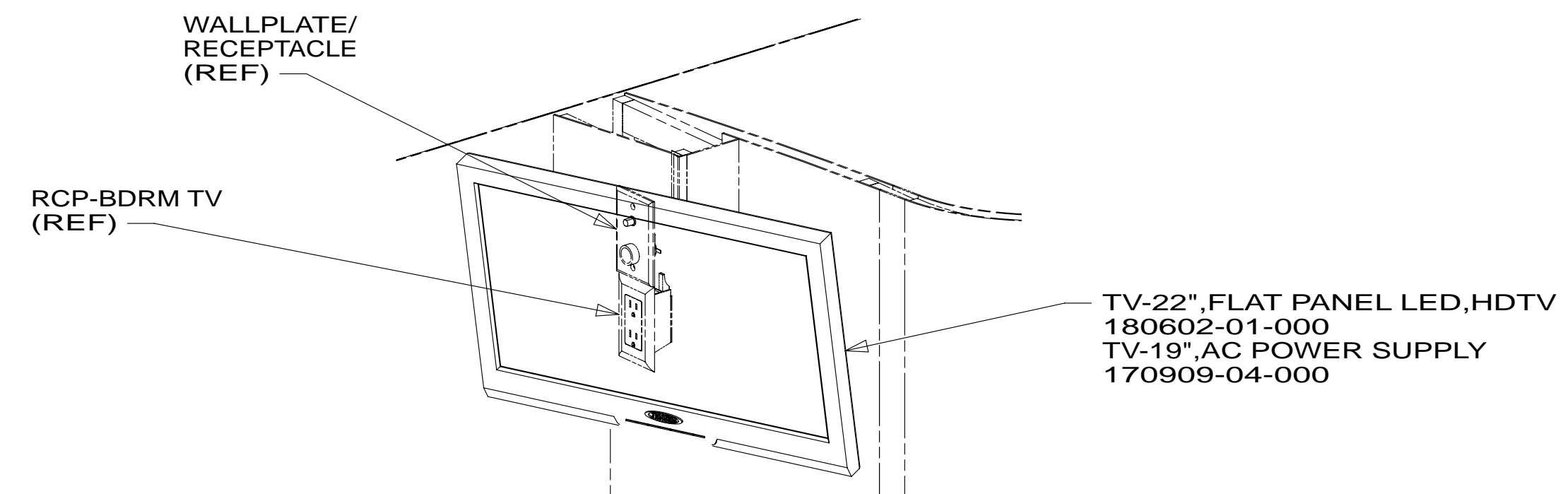
4

3

2

1

* 180652 * A



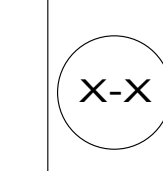
- 68B TV (REAR)DC 22" LCD W/REMOTE
- 265 CODES/STANDARDS-CSA/CMVSS
- 1B1 CODES/STANDARDS USA

1B1 265 68B

FIRST USED		
13 700-SERIES		
DO NOT SCALE DRAWING		
TITLE:		
WIRING INSTL-TV/DVD		
SHEET 7	PART NO	REV
	180652	
23-Apr-2013		

FOR ELECTRICAL
TORQUE
SPECIFICATIONS
SEE DWG NO.
128783-01-000

FOR
ELECTRICAL
CALLOUTS
SEE DWG NO.
121339-01-000



* 180652 * A