



**DANGER**

**Danger of electrical shock, burns or death.** Always remove all power sources before attempting any repair, service or diagnostic work. Power can be present from shore power, generator, inverter or battery. All power sources must be disabled and secured before performing any service.



**CAUTION**

If you lack the skills, tools or equipment to perform diagnostic or repair work leave such work to an authorized Winnebago Industries dealer or other qualified shop.

DRAWING NO.	MODELS
180646-01	R42QD
180646-02	R42JD
180646-03	R42GD

RELEASE	REV/DATE A	DWG NO 180646
REV ZONE	REVISION RECORD	DATE DFR-ORIG

	R42QD/AD/JD
CABLE ASM (YEL) FROM BATTERY TO STUD-JUMP START,RED	175207-52-090
CABLE ASM (YEL) FROM STUD-JUMP START,RED TO COACH SIDE OF AUX START SOLENOID	175207-52-004
CABLE ASM (ORG) FROM COACH BATTERY TO INVERTER FUSE	175207-62-010
CABLE ASM (BLK) FROM STUD-JUMP START,BLK TO FRAME RAIL GROUND	175211-01-006
CABLE ASM (ORG) FROM INVERTER FUSE TO INVERTER	175207-62-020
CABLE ASM (BLK) FROM BATTERY TO INVERTER	175211-01-022
CABLE ASM (BLK) FROM COACH BATTERY TO FRAME RAIL GROUND	175211-02-081
CABLE ASM (PUR) FROM DISCONNECT SOLENOID TO ISOLATED STUD	175207-15-004
CABLE ASM (RED) FROM BATTERY SIDE OF DISCONNECT SOLENOID TO CHASSIS SIDE OF AUX START SOLENOID	175207-35-008
CABLE ASM (BLU) FROM CHASSIS DISCONNECTED POWER ISOLATED STUD TO LEVELING SYSTEM POWER	141416-26-129
CABLE ASM (BLK) FROM LEVELING SYSTEM TO FRAME RAIL GROUND	133567-11-005
CABLE ASM (GRN) FROM BAT DISC RELAY TO PASS THRU STUD	175207-42-138
CABLE ASM (GRN) FROM PASS THRU STUD TO GENERATOR	175207-42-031
CABLE ASM (BLK) FROM GENERATOR TO FRAME RAIL GROUND	175211-02-022
CABLE ASM (YEL) JUMPER BETWEEN POSITIVE POSTS ON COACH BATTERY	141417-52-004
	141417-51-002 (4)
CABLE ASM (BLK) JUMPER BETWEEN NEGATIVE POSTS ON COACH BATTERY	133568-12-004
	133568-11-002 (4)
CABLE ASM (RED) JUMPER BETWEEN POSITIVE POSTS IN LEFT FRONT COMPT	141417-32-002
CABLE ASM-TEMPERATURE,BATTERY	175385-03-000

- 265 CODES/STANDARDS-CSA/CMVSS
- 1B1 CODES/STANDARDS USA
- 1B1 265

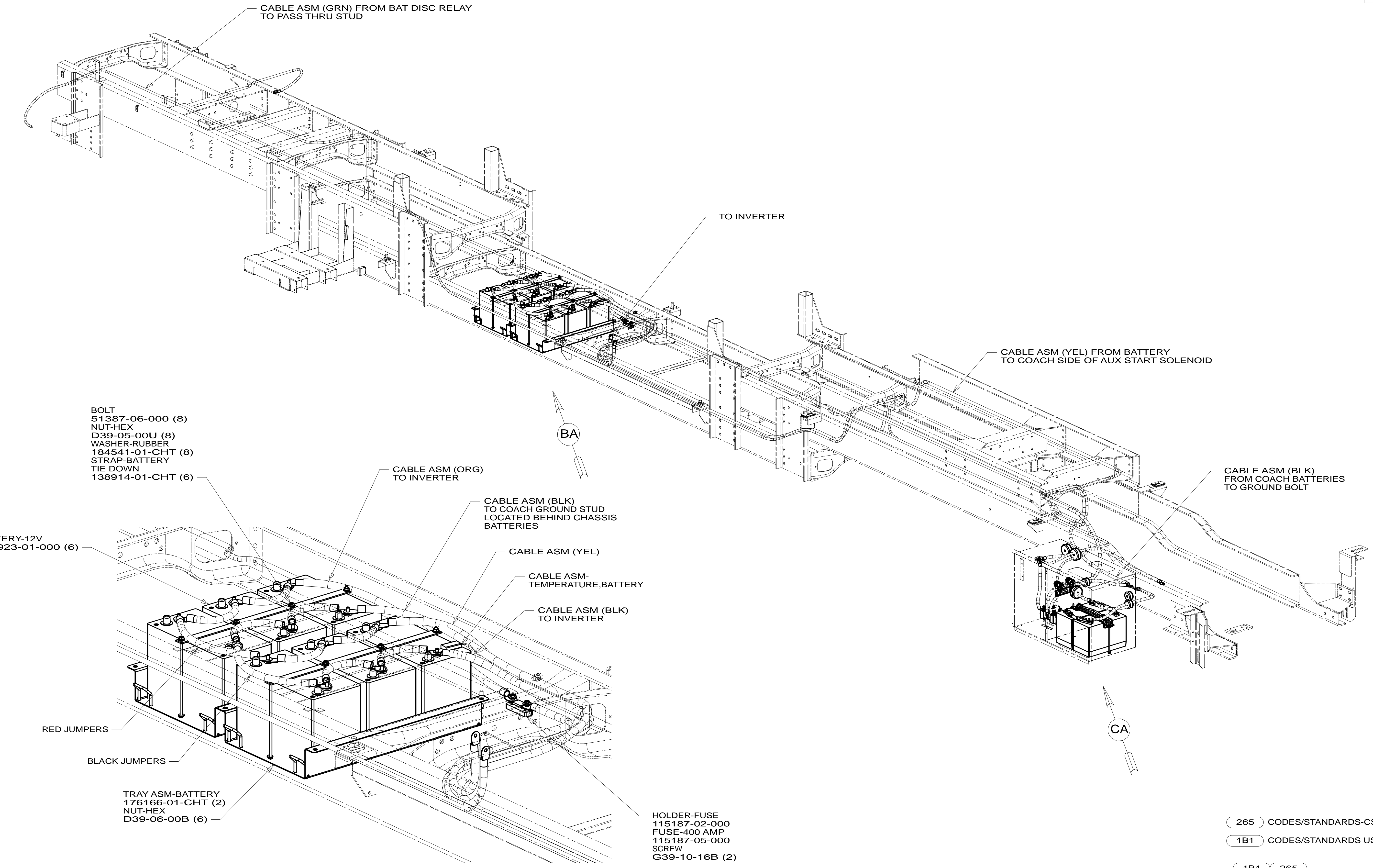
		COPYRIGHT 2011 WINNEBAGO INDUSTRIES, INC.	
DFTR	ORIG. DATE	ALL DIMENSIONS ARE IN MILLIMETERS	
CHKR			
P.E.			
M.E.	FIRST USED		
DSNR		<b>13 R-SERIES</b>	
UNSPECIFIED TOLERANCES ARE:		MATERIAL:	
WHOLE DIM (X)	: 3		
ONE-PLACE (X.X)	: 1.5		
TWO-PLACE (X.XX)	: 0.50		
ANGLE	: 1'		
THIRD ANGLE PROJECTION			
DO NOT SCALE DRAWING	REFER TO ES0018 FOR FASTENER TIGHTENING GUIDELINES		
TITLE: <b>BATTERY INSTL</b>			
SHEET 1 OF 3	PART NO 180646	REV	

NOTES:

- 3 SEE WIRING INSTL-FRONT END FOR ADDITIONAL INFORMATION.
- 2 SEE WIRING INSTL-CHASSIS FOR ADDITIONAL INFORMATION.
- 1 SEE LEVELING SYSTEM INSTL FOR ADDITIONAL INFORMATION.

FOR ELECTRICAL TORQUE SPECIFICATIONS SEE DWG NO. 128783-01-000

FOR ELECTRICAL CALLOUTS SEE DWG NO. 121339-01-000



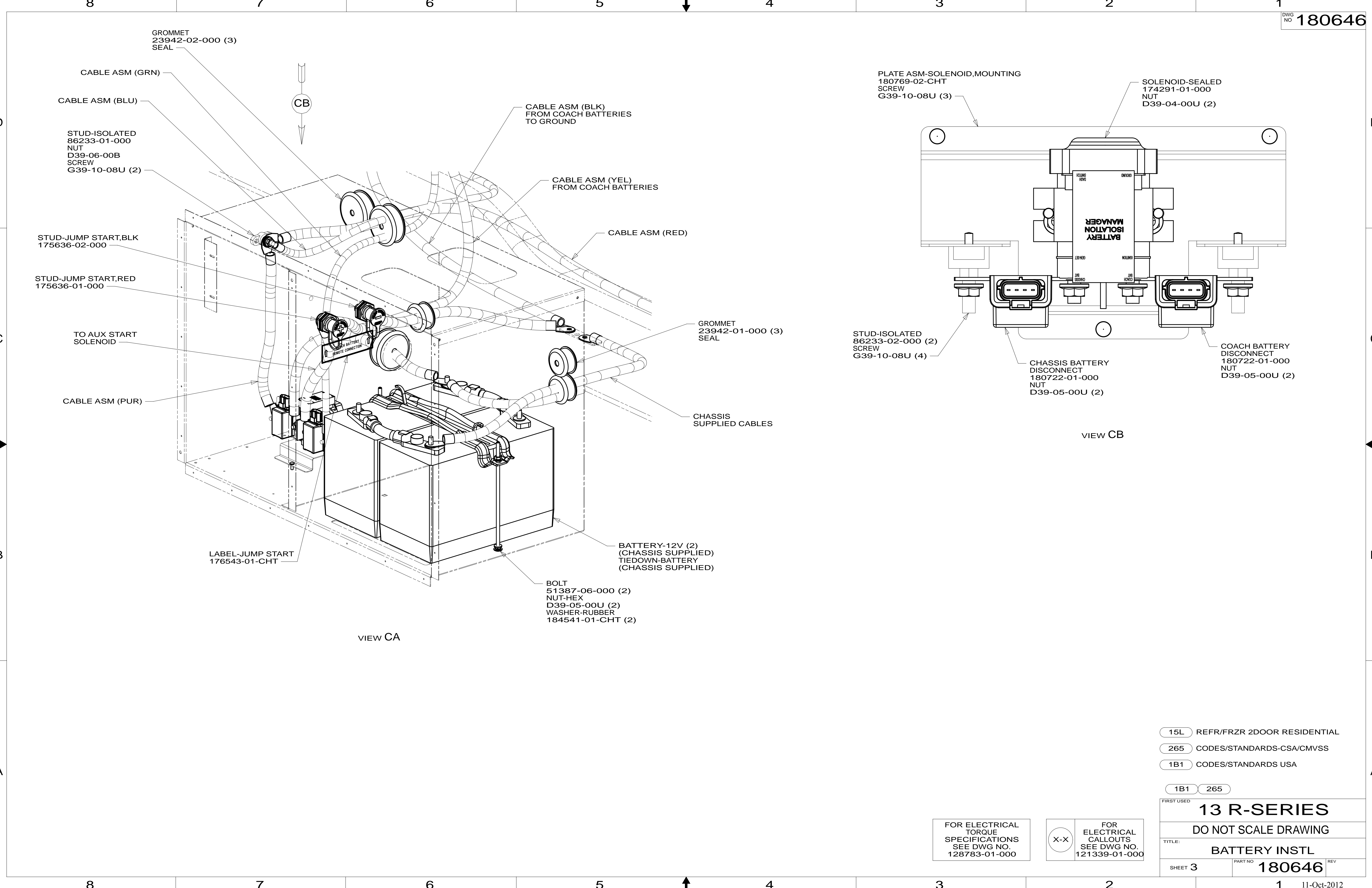
VIEW BA

- 265 CODES/STANDARDS-CSA/CMVSS
- 1B1 CODES/STANDARDS USA
- 1B1 265

FIRST USED	
<b>13 R-SERIES</b>	
DO NOT SCALE DRAWING	
TITLE: <b>BATTERY INSTL</b>	
SHEET 2	PART NO <b>180646</b> REV

FOR ELECTRICAL TORQUE SPECIFICATIONS SEE DWG NO. 128783-01-000

X-X FOR ELECTRICAL CALLOUTS SEE DWG NO. 121339-01-000



GROMMET  
23942-02-000 (3)  
SEAL

CABLE ASM (GRN)

CABLE ASM (BLU)

STUD-ISOLATED  
86233-01-000  
NUT  
D39-06-00B  
SCREW  
G39-10-08U (2)

STUD-JUMP START, BLK  
175636-02-000

STUD-JUMP START, RED  
175636-01-000

TO AUX START  
SOLENOID

CABLE ASM (PUR)

LABEL-JUMP START  
176543-01-CHT

VIEW CA

CABLE ASM (BLK)  
FROM COACH BATTERIES  
TO GROUND

CABLE ASM (YEL)  
FROM COACH BATTERIES

CABLE ASM (RED)

GROMMET  
23942-01-000 (3)  
SEAL

CHASSIS  
SUPPLIED CABLES

BATTERY-12V (2)  
(CHASSIS SUPPLIED)  
TIEDOWN-BATTERY  
(CHASSIS SUPPLIED)

BOLT  
51387-06-000 (2)  
NUT-HEX  
D39-05-00U (2)  
WASHER-RUBBER  
184541-01-CHT (2)

PLATE ASM-SOLENOID, MOUNTING  
180769-02-CHT  
SCREW  
G39-10-08U (3)

SOLENOID-SEALED  
174291-01-000  
NUT  
D39-04-00U (2)

STUD-ISOLATED  
86233-02-000 (2)  
SCREW  
G39-10-08U (4)

CHASSIS BATTERY  
DISCONNECT  
180722-01-000  
NUT  
D39-05-00U (2)

COACH BATTERY  
DISCONNECT  
180722-01-000  
NUT  
D39-05-00U (2)

VIEW CB

- 15L REFR/FRZR 2DOOR RESIDENTIAL
- 265 CODES/STANDARDS-CSA/CMVSS
- 1B1 CODES/STANDARDS USA

1B1 265

**13 R-SERIES**

DO NOT SCALE DRAWING

TITLE: **BATTERY INSTL**

SHEET 3 PART NO. **180646** REV

FOR ELECTRICAL  
TORQUE  
SPECIFICATIONS  
SEE DWG NO.  
128783-01-000

X-X  
FOR  
ELECTRICAL  
CALLOUTS  
SEE DWG NO.  
121339-01-000