



DANGER

Danger of electrical shock, burns or death. Always remove all power sources before attempting any repair, service or diagnostic work. Power can be present from shore power, generator, inverter or battery. All power sources must be disabled and secured before performing any service.



CAUTION

If you lack the skills, tools or equipment to perform diagnostic or repair work leave such work to an authorized Winnebago Industries dealer or other qualified shop.

DRAWING NO.	MODEL	SHEET
180640-01	D30A	1,2,3,4
180640-02	D33C	1,2,3,4
180640-03	D36V	1,2,3,4
180640-04	D35G	1,2,3,4,5

		D33C	D30A	D36V	D35G
SLIDEOUT WIRE #1		136151-03-026	136151-02-020	136151-03-025	136151-03-026
SLIDEOUT WIRE #2		136151-13-022	136151-06-020		
SLIDEOUT WIRE #3		136151-06-022	136151-12-020		
SLIDEOUT WIRE #4			136151-13-020		
SLIDEOUT WIRE #5		136151-12-022			
SLIDEOUT WIRE #6		136151-03-022			
THROW IN WIRE #1	1B1	136131-02-013	136131-12-218	136131-03-030	136131-03-015
	265	136134-02-013	136134-12-218	136134-03-030	136134-03-015
THROW IN WIRE #2	1B1	136131-12-033		136131-12-230	136131-12-024
	265	136134-12-033		136134-12-230	136134-12-024
THROW IN WIRE #3	1B1	136131-04-011	136131-04-011	136131-04-011	136131-04-011
	265	136134-04-011	136134-04-011	136134-04-011	136134-04-011
THROW IN WIRE #4	1B1	136131-12-011	136131-12-011	136131-12-011	136131-12-011
	265	136134-12-011	136134-12-011	136134-12-011	136134-12-011
THROW IN WIRE #5	1B1	136131-13-020	136131-02-078		136131-15-025
	265	136134-13-020	136134-02-078		136134-15-025
THROW IN WIRE #6	1B1	136131-12-263	136131-06-026		136131-12-162
	265	136134-12-263	136134-06-026		136134-12-162
THROW IN WIRE #7	1B1	136131-03-052	136131-12-038		136131-03-055
	265	136134-03-052	136134-12-038		136134-03-055
THROW IN WIRE #8	1B1	136131-03-049	136131-13-023		
	265	136134-03-049	136134-13-023		
GENERATOR CABLE ASM	1B1			136137-01-055	
	265			136138-01-055	
	1B1			136137-01-055	
	265			136138-01-055	

- SEE DETAIL DF FOR ADDITIONAL INFORMATION.
- SEE DETAIL DD FOR CONNECTOR INSTALLATION.
- SEE DETAIL DE FOR CONNECTOR INSTALLATION.
- SEE DETAIL DC FOR CONNECTOR INSTALLATION.
- SEE DETAIL DB FOR CONNECTOR INSTALLATION.
- SEE DETAIL DA FOR CONNECTOR INSTALLATION.
3. SEE WIRING INSTL-BODY,12V FOR ADDITIONAL INFORMATION.
2. SECURE WIRES TO BACKSIDE OF LOAD CENTER WITH WIRE TIE 116673-01-000.
1. ALL GROUNDS WIRES TO BE COVERED WITH TUBING 8041-02-000.

NOTES:

FOR ELECTRICAL TORQUE SPECIFICATIONS SEE DWG NO. 128783-01-000

FOR ELECTRICAL CALLOUTS SEE DWG NO. 121339-01-000

- ENTERTAIN CENTR/EXT TV-DVD
- INVERTER-DC/AC, 1000 WATT
- CODES/STANDARDS-CSA/CMVSS
- CODES/STANDARDS USA

COPYRIGHT 2013 WINNEBAGO INDUSTRIES, INC.

DFTR	ORIG. DATE
CHKR	ALL DIMENSIONS ARE IN MILLIMETERS
P.E.	
M.E.	FIRST USED
DSNR	13 D-SERIES

UNSPECIFIED TOLERANCES ARE:
 WHOLE DIM (X) : 3
 ONE-PLACE (X.X) : 1.5
 TWO-PLACE (X.XX) : 0.50
 ANGLE : 1°

THIRD ANGLE PROJECTION

DO NOT SCALE DRAWING REFER TO ES0018 FOR FASTENER TIGHTENING GUIDELINES

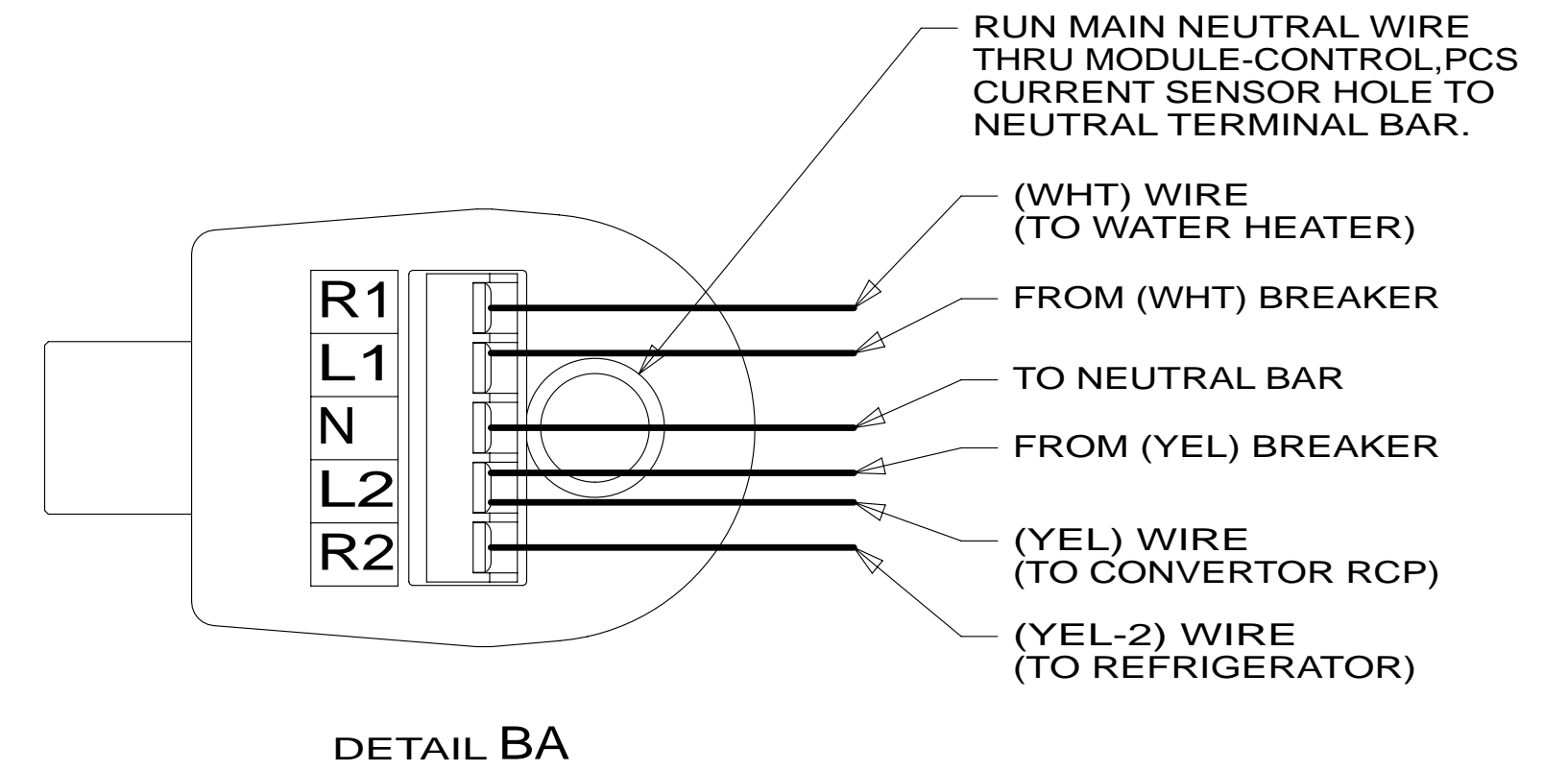
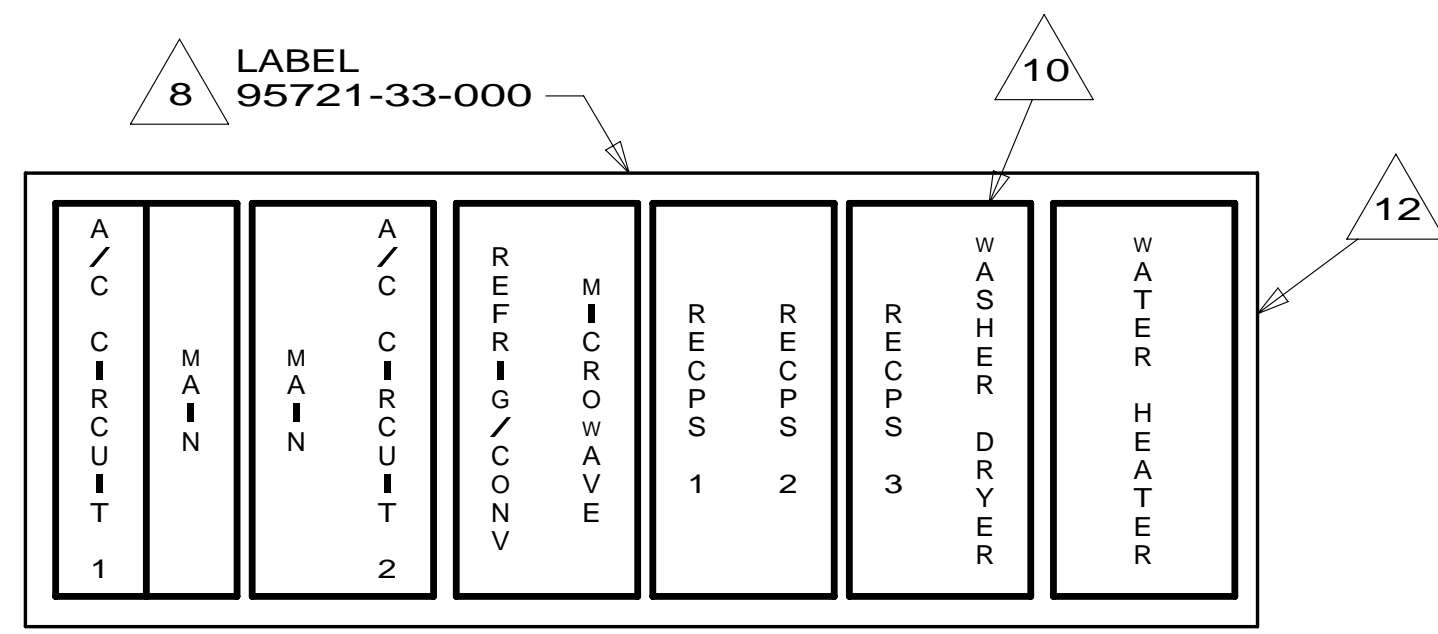
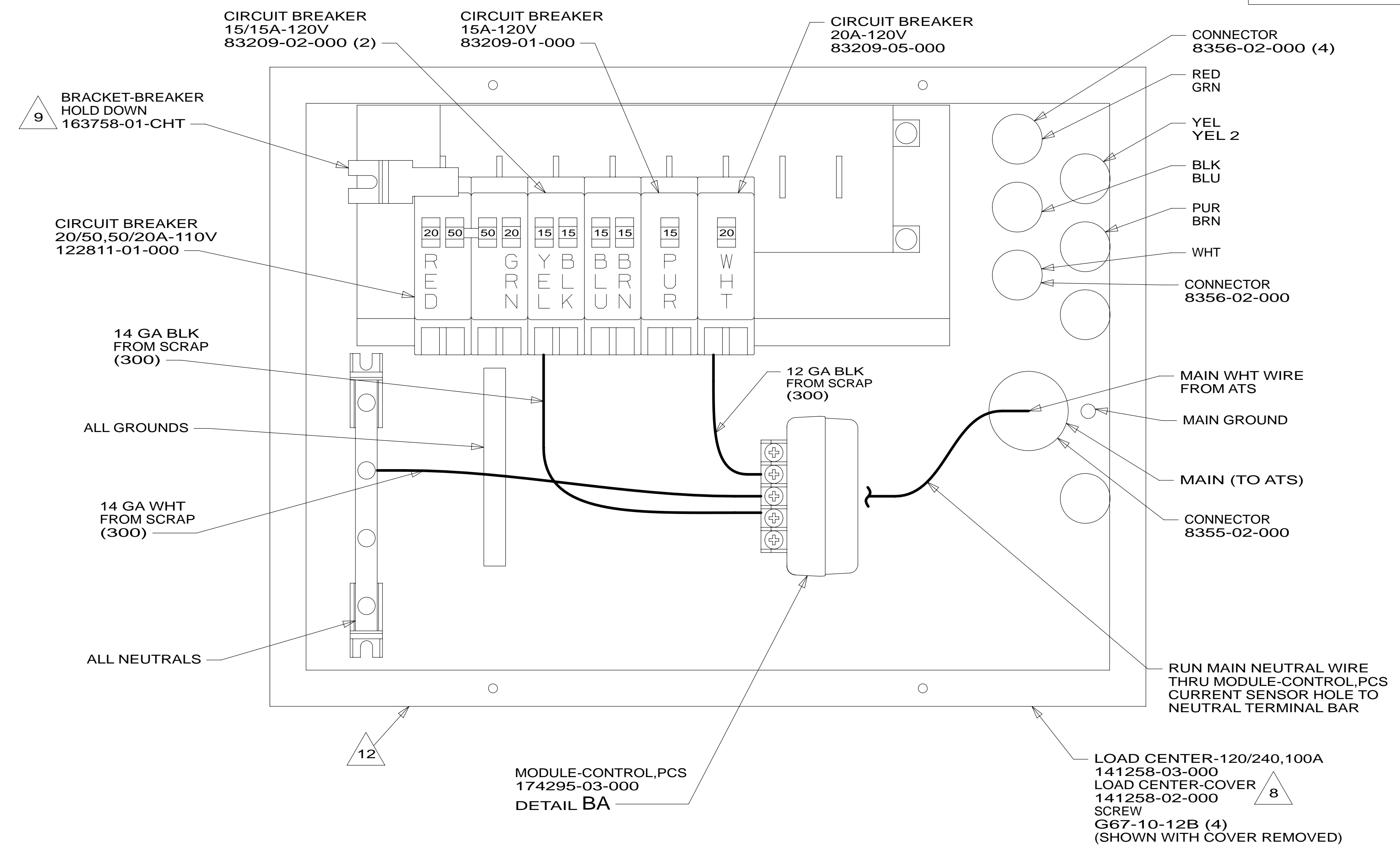
TITLE: **LOAD CENTER/ATS ASM**

SHEET **1** OF **5** PART NO **180640** REV

REF: **1** 08-Apr-2013

* 180640 *

		D33C	D30A	D36V	D35G
RED	1B1	136135-07-061	136135-07-063	136135-07-039	136135-07-052
	265	136136-07-061	136136-07-063	136136-07-039	136136-07-052
YEL	1B1	136131-05-016	136131-05-032	136131-05-034	136131-05-012
	265	136134-05-016	136134-05-032	136134-05-034	136134-05-012
YEL-2	1B1	136131-13-083 ¹¹	136131-13-045 ¹¹	136131-13-038	136131-13-062
	265	136134-13-083 ¹¹	136134-13-045 ¹¹	136134-13-038	136134-13-062
BLK	1B1	136131-06-089 ¹¹	136131-06-045 ¹¹	136131-06-075	136131-06-020 ¹¹
	265	136134-06-089 ¹¹	136134-06-045 ¹¹	136134-06-075	136134-06-020 ¹¹
BRN	1B1	136131-03-096 ¹¹	136131-03-166 ¹¹	136131-03-155 ¹¹	136131-03-034 ¹¹
	265	136134-03-096 ¹¹	136134-03-166 ¹¹	136134-03-155 ¹¹	136134-03-034 ¹¹
BLU	1B1	136131-02-076 ¹¹	136131-02-045 ¹¹	136131-02-125	136131-02-150
	265	136134-02-076 ¹¹	136134-02-045 ¹¹	136134-02-125	136134-02-150
GRN	1B1	136135-08-058	136135-08-063	136135-08-039	136135-08-052
	265	136136-08-058	136136-08-063	136136-08-039	136136-08-052
PUR	1B1	136131-04-068 ¹¹	136131-04-045 ¹¹	136131-04-064 ¹¹	136131-04-060 ¹¹
	265	136134-04-068 ¹¹	136134-04-045 ¹¹	136134-04-064 ¹¹	136134-04-060 ¹¹
WHT	1B1	136135-09-070	136135-09-033	136135-09-051	136135-09-043
	265	136136-09-070	136136-09-033	136136-09-051	136136-09-043
MAIN	1B1	136139-01-066	136139-01-033	136139-01-049	136139-01-030
	265	136140-01-066	136140-01-033	136140-01-049	136140-01-030
GROUND MAIN		136145-01-016	136145-01-031	136145-01-032	136145-01-015
GROUND ATS		136145-01-052	136145-01-022	136145-01-052	136145-01-025
GRAY	1B1				136131-15-020
	265				136134-15-020
GOLD	1B1				136131-10-061
	265				136134-10-061
GOLD 2	1B1				136131-20-061
	265				136134-20-061



- NOTES:
1. ALL GROUND WIRES TO BE COVERED WITH TUBING 8041-02-000.
 2. GROUND WIRES ARE NOT SHOWN FOR CLARITY.
 3. ALL WIRES TO BE CLAMPED WITHIN 200MM OF ATS.
 4. ALL 110V STRANDED WIRE W/O TERMINALS TO BE STRIPPED 10MM AND SOLDER DIPPED.
 5. REMOVE 400MM FROM OUTER JACKET ON ALL WIRES ENTERING LOAD CENTER AND TRIM INDIVIDUAL CONDUCTORS AS REQUIRED TO MAKE INTERNAL CONNECTIONS.

6. ATTACH WIRES TO BACKSIDE OF LOAD CENTER, USE EXISTING HOLES AND TIE-WIRE 116673-01-000.
7. SEE WIRING INSTL-BODY,12V FOR ADDITIONAL INFORMATION.
8. INSTALLED BY ASSEMBLY LINE.
9. LOOSEN LEFT BUSS BAR MOUNTING SCREW, INSERT BRACKET-BREAKER HOLD DOWN UNDER SCREW, ORIENTATE BRACKET TOWARD MAIN BREAKER AS SHOWN AND TIGHTEN SCREW.

10. BLACKEN OUT "WASHER DRYER" WITH BLACK MARKER.
11. SEE DETAIL DA FOR CONNECTOR INSTALLATION.
12. NOT USED ON D35G. SEE SHT5 FOR D35G LOAD CENTER AND LABEL.

FOR ELECTRICAL TORQUE SPECIFICATIONS SEE DWG NO. 128783-01-000

FOR ELECTRICAL CALLOUTS SEE DWG NO. 121339-01-000

265 CODES/STANDARDS-CSA/CMVSS
1B1 CODES/STANDARDS USA

1B1 265

FIRST USED

13 D-SERIES

DO NOT SCALE DRAWING

TITLE: **LOAD CENTER/ATS ASM**

SHEET 2 PART NO. **180640** REV

8 7 6 5 4 3 2 1

D

D

C

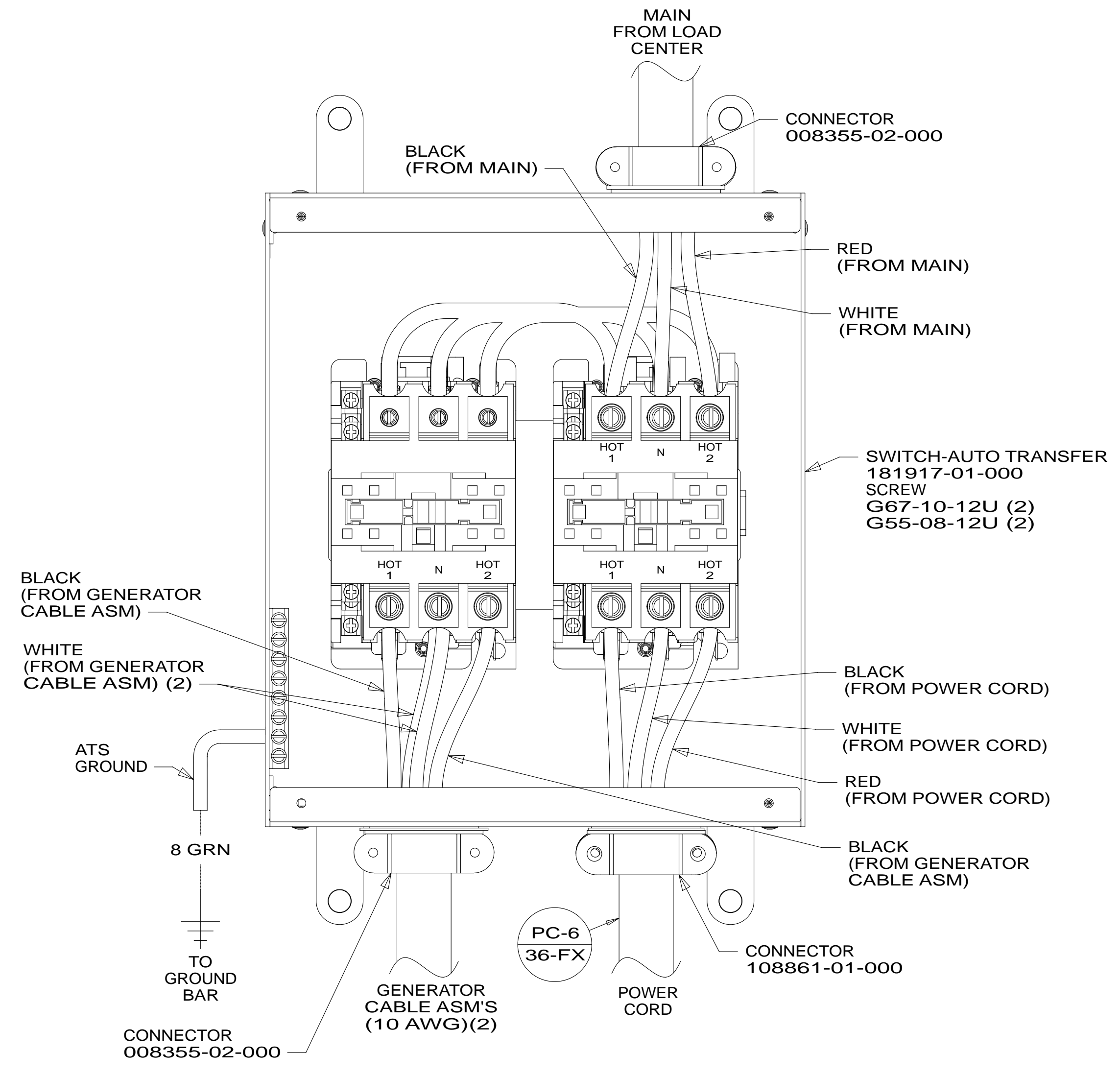
C

B

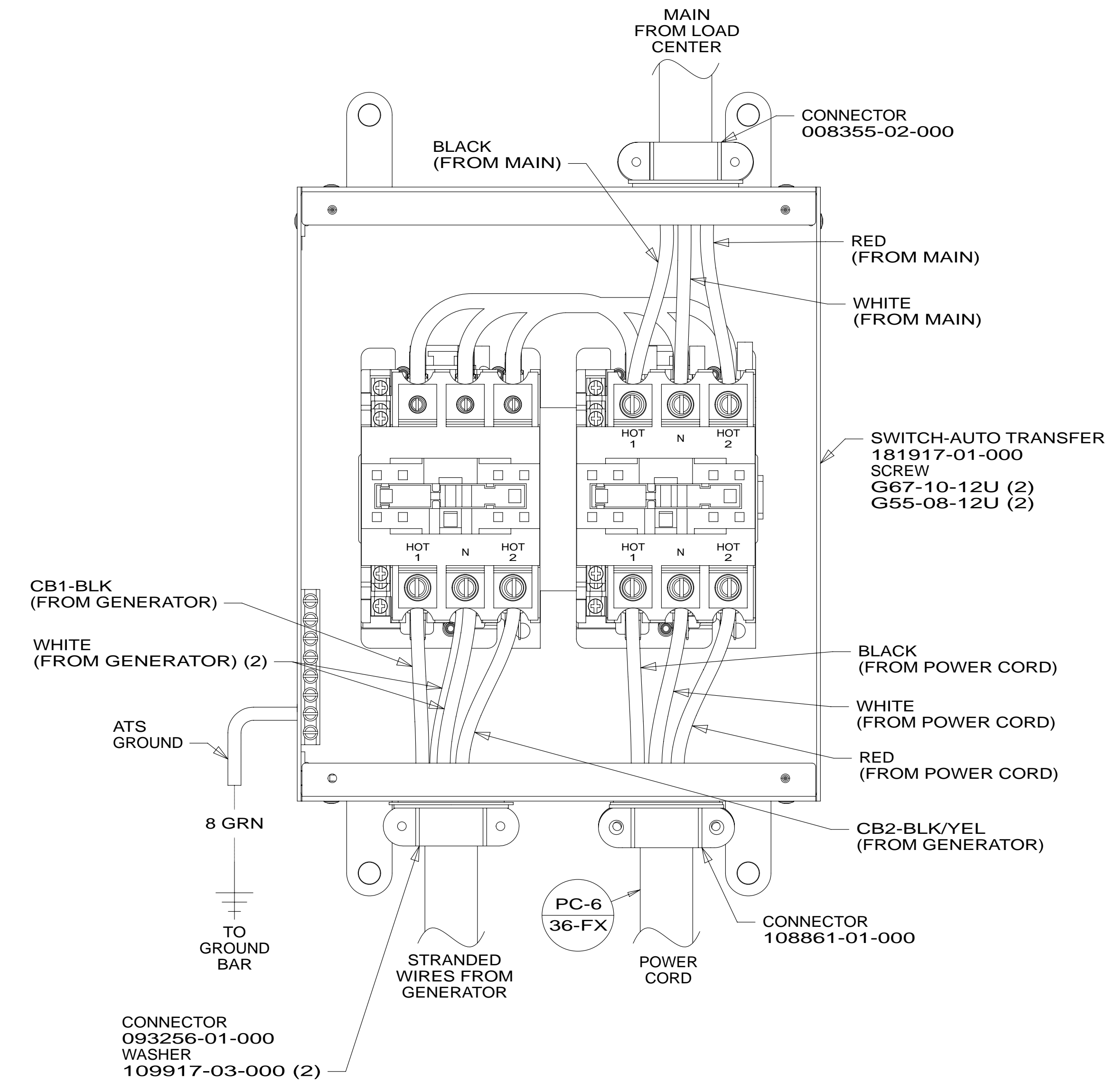
B

A

A



D36V



D33C,D30A,D35G

265 CODES/STANDARDS-CSA/CMVSS

1B1 CODES/STANDARDS USA

1B1 265

FIRST USED 13 D-SERIES

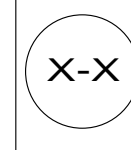
DO NOT SCALE DRAWING

TITLE: LOAD CENTER/ATS ASM

SHEET 3 PART NO 180640 REV

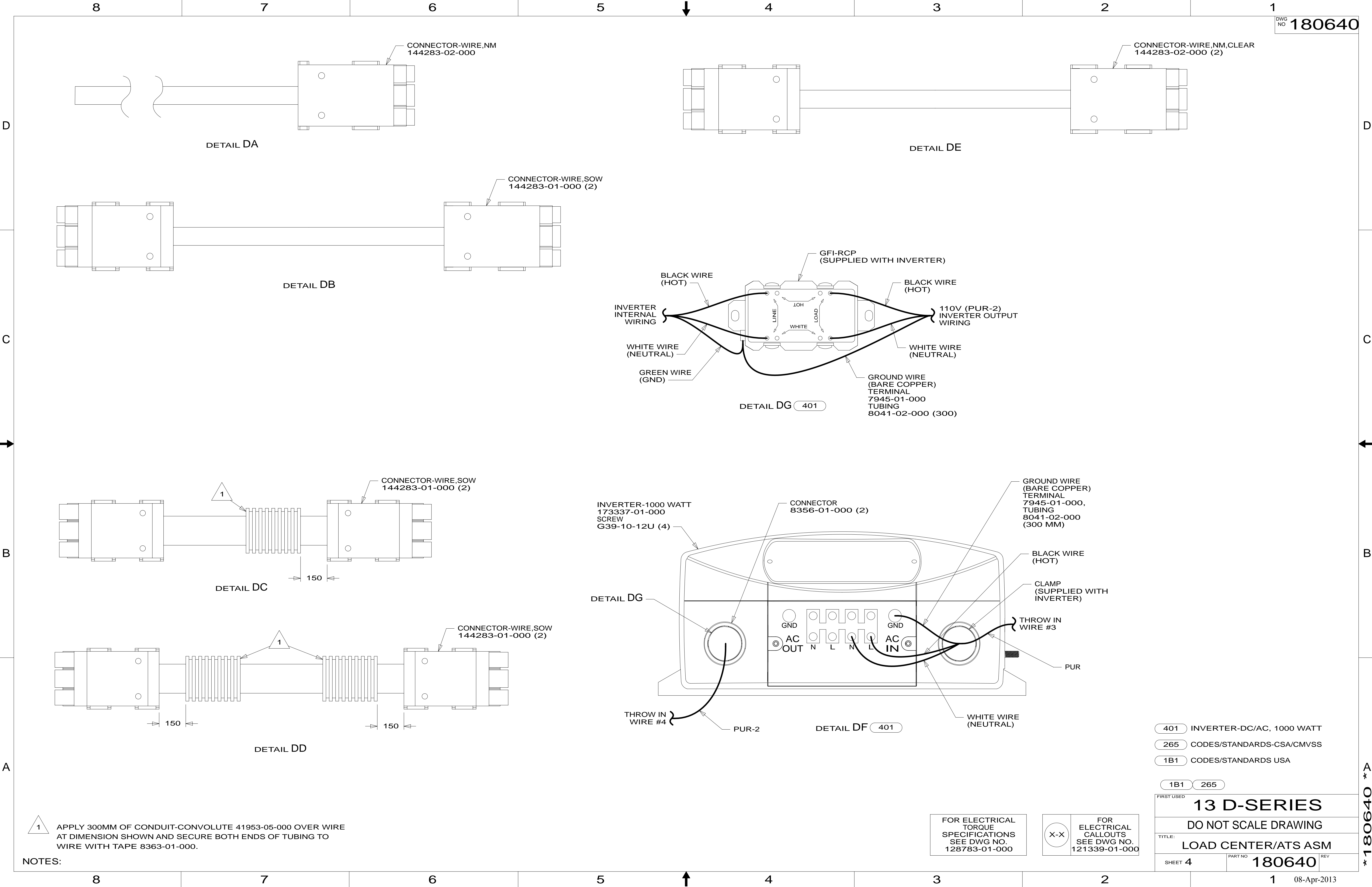
FOR ELECTRICAL TORQUE SPECIFICATIONS SEE DWG NO. 128783-01-000

FOR ELECTRICAL CALLOUTS SEE DWG NO. 121339-01-000



* 180640

8 7 6 5 4 3 2 1



1 APPLY 300MM OF CONDUIT-CONVOLUTE 41953-05-000 OVER WIRE AT DIMENSION SHOWN AND SECURE BOTH ENDS OF TUBING TO WIRE WITH TAPE 8363-01-000.

NOTES:

FOR ELECTRICAL TORQUE SPECIFICATIONS SEE DWG NO. 128783-01-000

FOR ELECTRICAL CALLOUTS SEE DWG NO. 121339-01-000

- 401 INVERTER-DC/AC, 1000 WATT
- 265 CODES/STANDARDS-CSA/CMVSS
- 1B1 CODES/STANDARDS USA

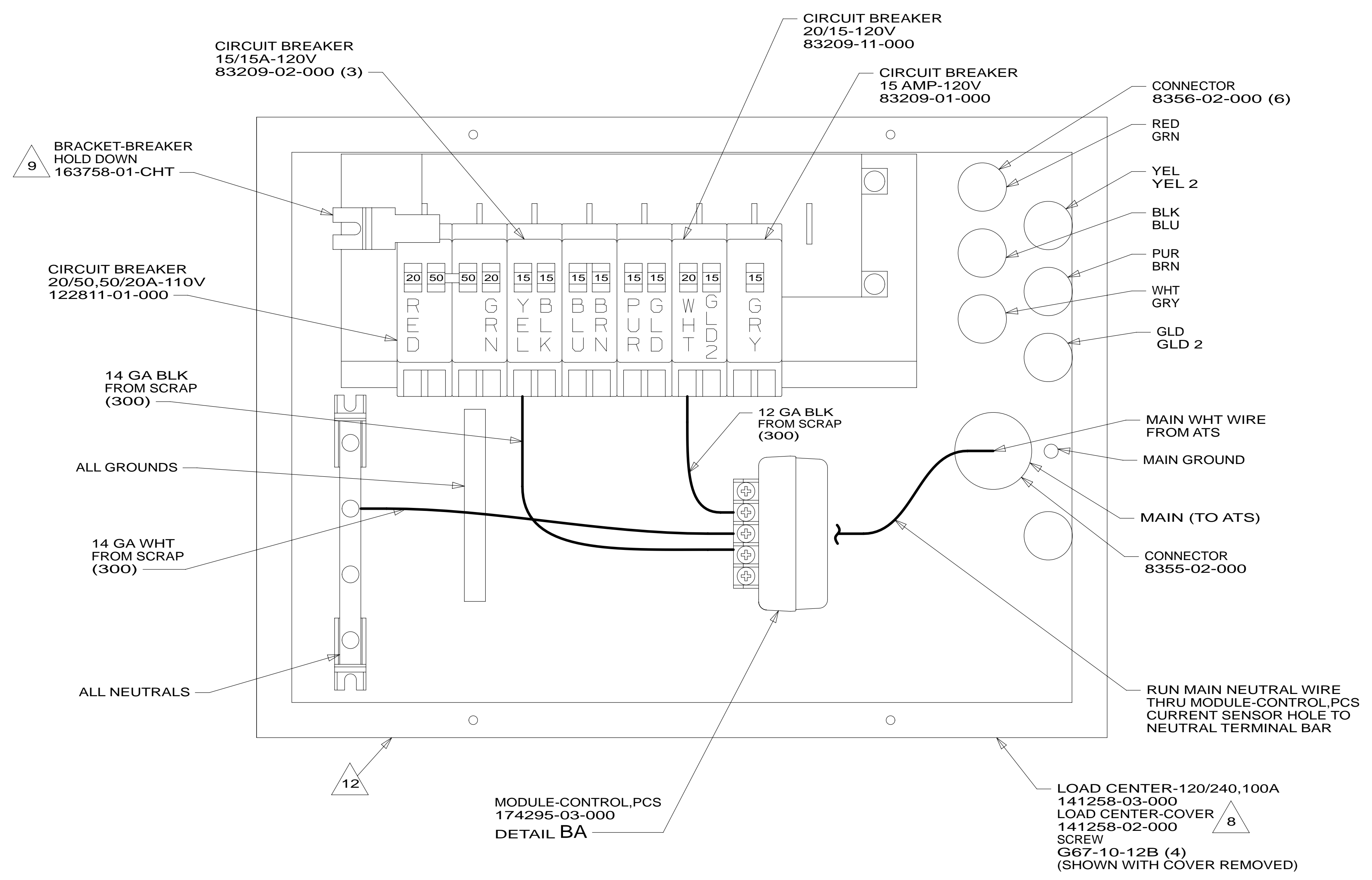
1B1 265

FIRST USED **13 D-SERIES**

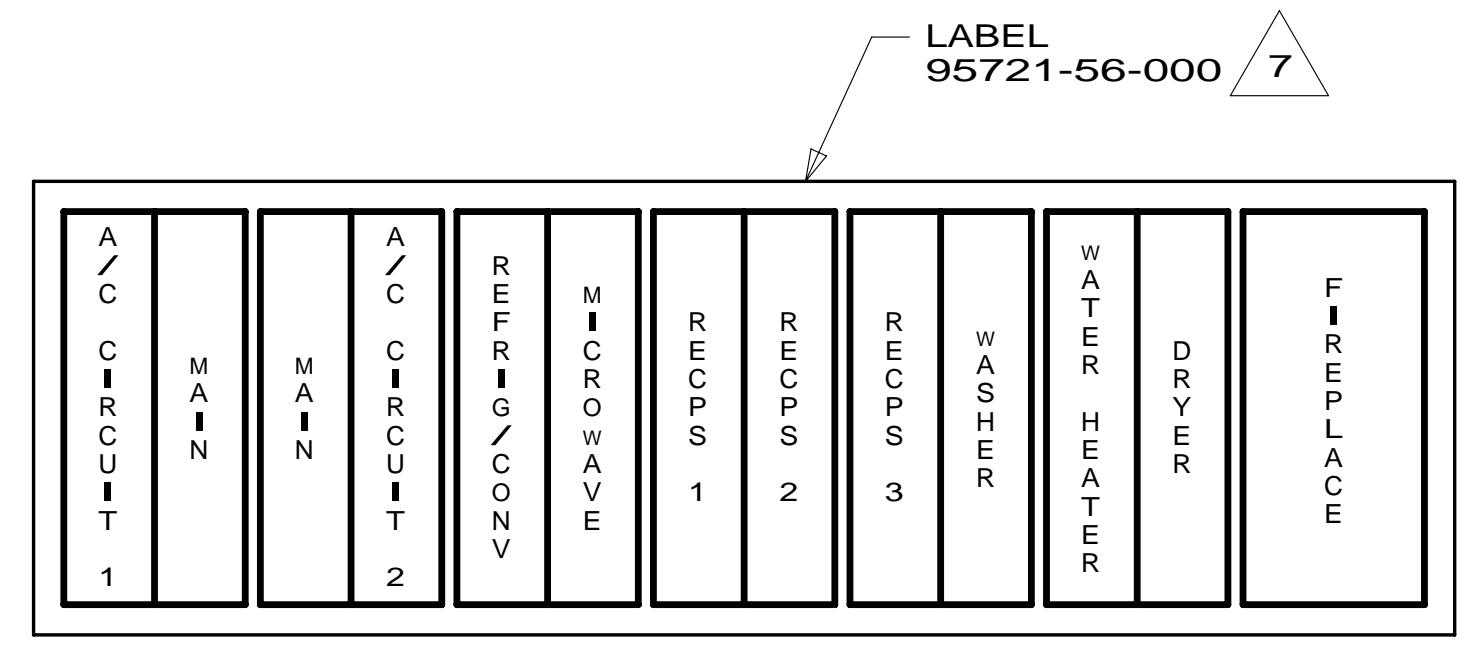
DO NOT SCALE DRAWING

TITLE: **LOAD CENTER/ATS ASM**

SHEET 4 PART NO **180640** REV



- 8 LOOSEN LEFT BUSS BAR MOUNTING SCREW, INSERT BRACKET-BREAKER HOLD DOWN UNDER SCREW, ORIENTATE BRACKET TOWARD MAIN BREAKER AS SHOWN AND TIGHTEN SCREW.
- 7 INSTALLED BY ASSEMBLY LINE.
- REMOVE 400MM FROM OUTER JACKET ON ALL WIRES ENTERING LOAD CENTER AND TRIM INDIVIDUAL CONDUCTORS AS REQUIRED TO MAKE INTERNAL CONNECTIONS
 - ATTACH WIRES TO BACKSIDE OF LOAD CENTER, USE EXISTING HOLES AND TIE-WIRE 116673-01-000.
 - ALL 110V STRANDED WIRE W/O TERMINALS TO BE STRIPPED 10MM AND SOLDER DIPPED.
 - ALL WIRES TO BE CLAMPED WITHIN 200MM OF ATS.
 - GROUND WIRES ARE NOT SHOWN FOR CLARITY.
 - ALL GROUND WIRES TO BE COVERED WITH TUBING 8041-02-000.



INSTALL LABEL ON FRONT COVER PLATE BELOW THE BREAKERS

265 CODES/STANDARDS-CSA/CMVSS
1B1 CODES/STANDARDS USA

1B1	265
FIRST USED	
13 D-SERIES	
DO NOT SCALE DRAWING	
TITLE: LOAD CENTER/ATS ASM	
SHEET 5	PART NO 180640 REV

FOR ELECTRICAL TORQUE SPECIFICATIONS SEE DWG NO. 128783-01-000

FOR ELECTRICAL CALLOUTS SEE DWG NO. 121339-01-000

* 180640