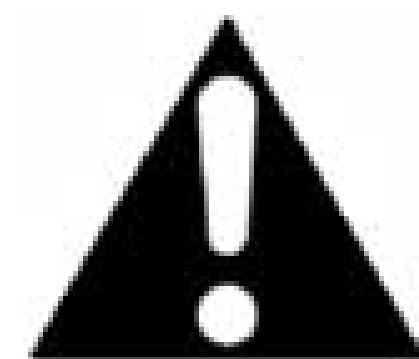




DANGER

Danger of electrical shock, burns or death. Always remove all power sources before attempting any repair, service or diagnostic work. Power can be present from shore power, generator, inverter or battery. All power sources must be disabled and secured before performing any service.

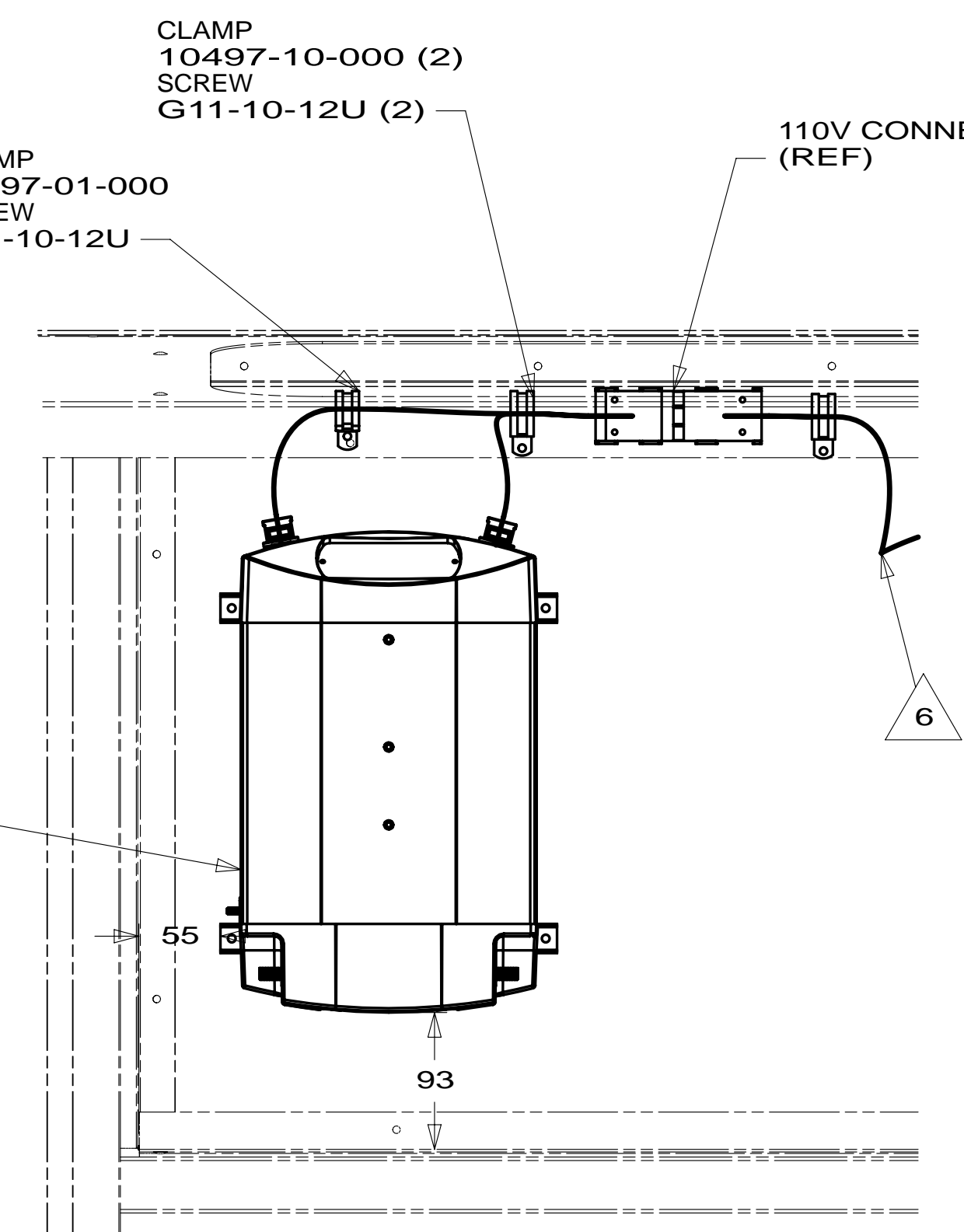
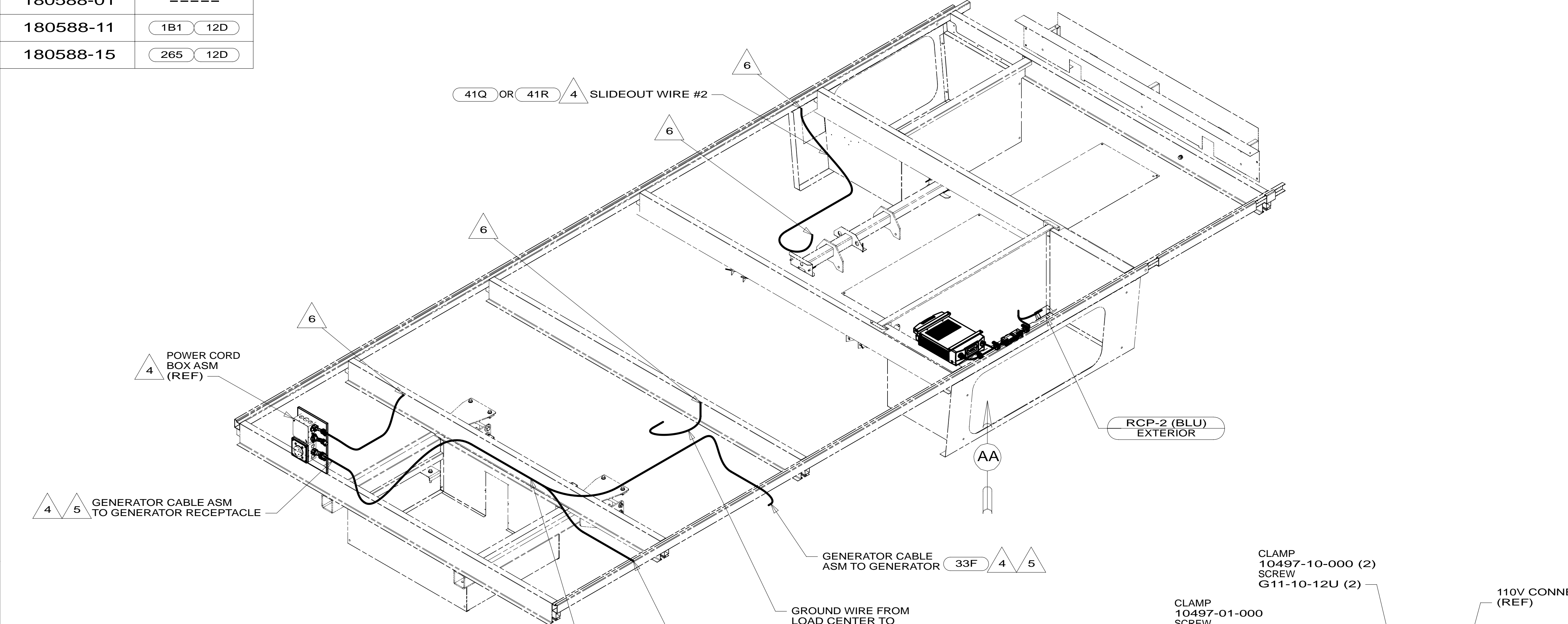


CAUTION

If you lack the skills, tools or equipment to perform diagnostic or repair work leave such work to an authorized Winnebago Industries dealer or other qualified shop.

| DRAWING NO. | FEATURE |
|-------------|---------|
| 180588-01 | ----- |
| 180588-11 | 1B1 12D |
| 180588-15 | 265 12D |

| | | | |
|----------|-----------------|--------|----------|
| RELEASE | REV/DATE | DWG NO | 180588 |
| REV ZONE | REVISION RECORD | DATE | DTR-ORIG |



- 41R SOFA/SLEEPER
- 41Q SOFA/SLEEPER-ULTRALEATHER
- 401 INVERTER-DC/AC, 1000 WATT
- 40A INVERTER-DC/AC WITHOUT
- 52G GEN-3.6KW ONAN LP MICROQUIET
- 33F GEN-3.2 KW ONAN DIESEL
- 12D ELECTRICAL SYSTEM 30 AMP
- 265 CODES/STANDARDS-CSA-CMVSS
- 1B1 CODES/STANDARDS USA

- 7 LEAVE WIRES ABOVE FLOOR AND CONNECT BRN AND BRN-2 110V CONNECTORS TOGETHER WITH OPTION 40A
 - 6 WIRES ROUTED THROUGH FLOOR IN THIS AREA.
 - 5 SEE GENERATOR INSTL FOR ADDITIONAL INFORMATION.
 - 4 SEE LOAD CENTER/ATS ASM FOR ADDITIONAL INFORMATION.
3. ALL GROUND WIRES TO BE COVERED WITH TUBING 8041-02-000.
 2. ALL 110V WIRE ARE TO BE CLAMPED WITH CLAMP 10497-05-000 WITHIN 200MM OF OUTLET BOXES, USE SCREW G67-10-12U.
 1. ALL WIRES TO BE SECURED WITH CLAMP 10495-01-000 OR CLIP 80734-01-000 EVERY 600MM. USE SCREW G67-10-12U UNLESS OTHERWISE SPECIFIED.

NOTES:

VIEW AA 401

FOR ELECTRICAL TORQUE SPECIFICATIONS SEE DWG NO. 128783-01-000

FOR ELECTRICAL CALLOUTS SEE DWG NO. 121339-01-000

WINNEBAGO COPYRIGHT 2011 WINNEBAGO INDUSTRIES, INC.

| | |
|------|-----------------------------------|
| DTR | ORIG. DATE |
| CHKR | ALL DIMENSIONS ARE IN MILLIMETERS |
| P.E. | FIRST USED |
| M.E. | 13 524V |
| DSNR | |

UNSPECIFIED TOLERANCES ARE:
 WHOLE DIM (X) : 3
 ONE-PLACE (X.X) : 1.5
 TWO-PLACE (X.XX) : 0.50
 ANGLE : 1°

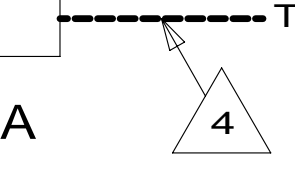
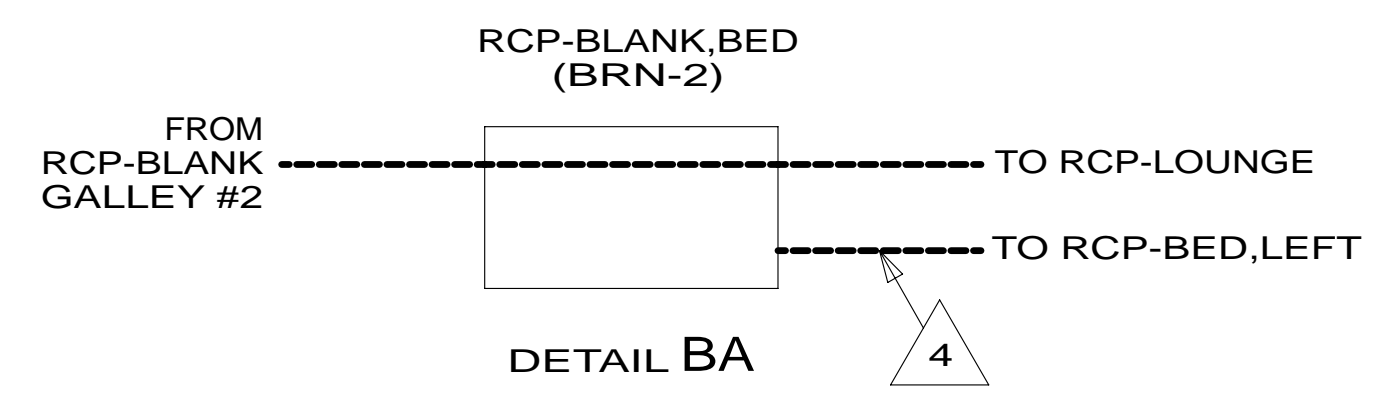
THIRD ANGLE PROJECTION

DO NOT SCALE DRAWING REFER TO ES0018 FOR FASTENER TIGHTENING GUIDELINES

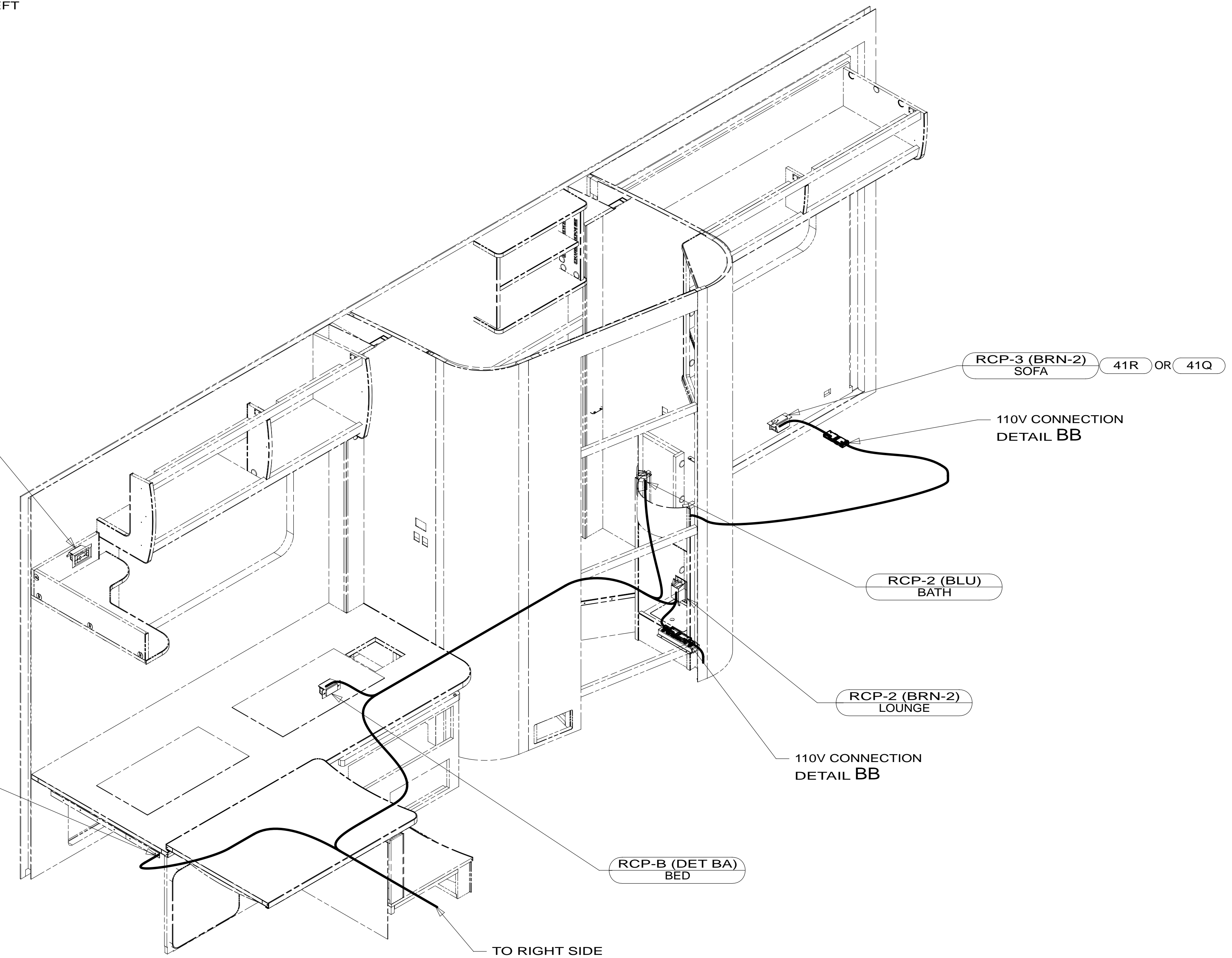
TITLE: **WIRING INSTL-BODY,110V**

SHEET 1 OF 3 PART NO. **180588** REV

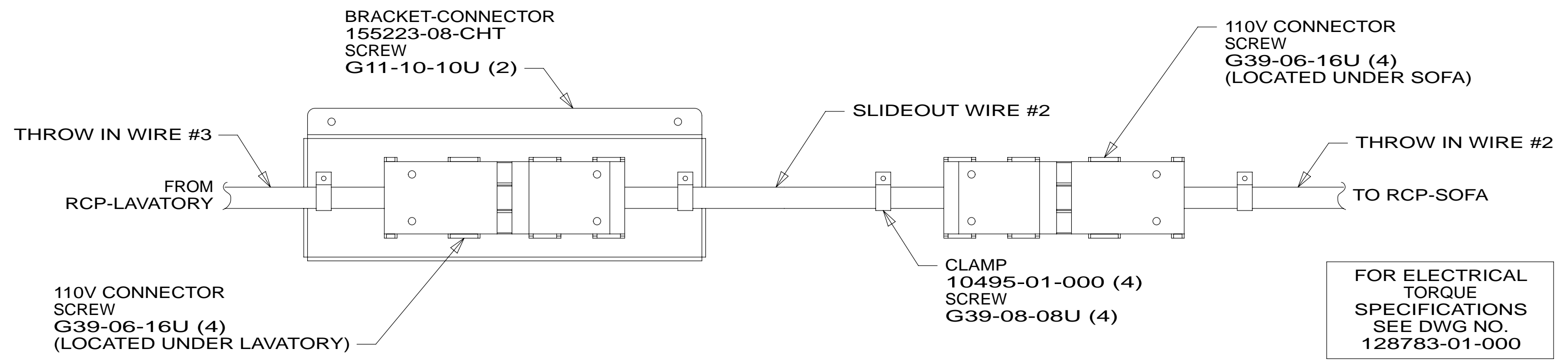
REF: 1 26-Jul-2012



110V (WHT) TO WATER HEATER



- NOTES:
- 4 WIRE ROUTED IN SIDEWALL.
 - 3. ALL GROUND WIRES TO BE COVERED WITH TUBING 8041-02-000.
 - 2. ALL WIRING TO BE SECURED WITHIN 200MM OF OUTLET BOXES.
 - 1. ALL WIRES TO BE SECURED WITH CLAMP 10495-01-000 OR CLIP 80734-01-000 EVERY 600MM. USE SCREW G67-10-12U UNLESS OTHERWISE SPECIFIED.



FOR ELECTRICAL TORQUE SPECIFICATIONS SEE DWG NO. 128783-01-000

FOR ELECTRICAL CALLOUTS SEE DWG NO. 121339-01-000

- 41R SOFA/SLEEPER
- 41Q SOFA/SLEEPER-ULTRALEATHER
- 12D ELECTRICAL SYSTEM 30 AMP
- 265 CODES/STANDARDS-CSA/CMVSS
- 1B1 CODES/STANDARDS USA

| | | | |
|---------------------------------------|---------|----------------|-----|
| FIRST USED | | 13 524V | |
| DO NOT SCALE DRAWING | | | |
| TITLE: WIRING INSTL-BODY, 110V | | | |
| SHEET 2 | PART NO | 180588 | REV |
| | | | |

