



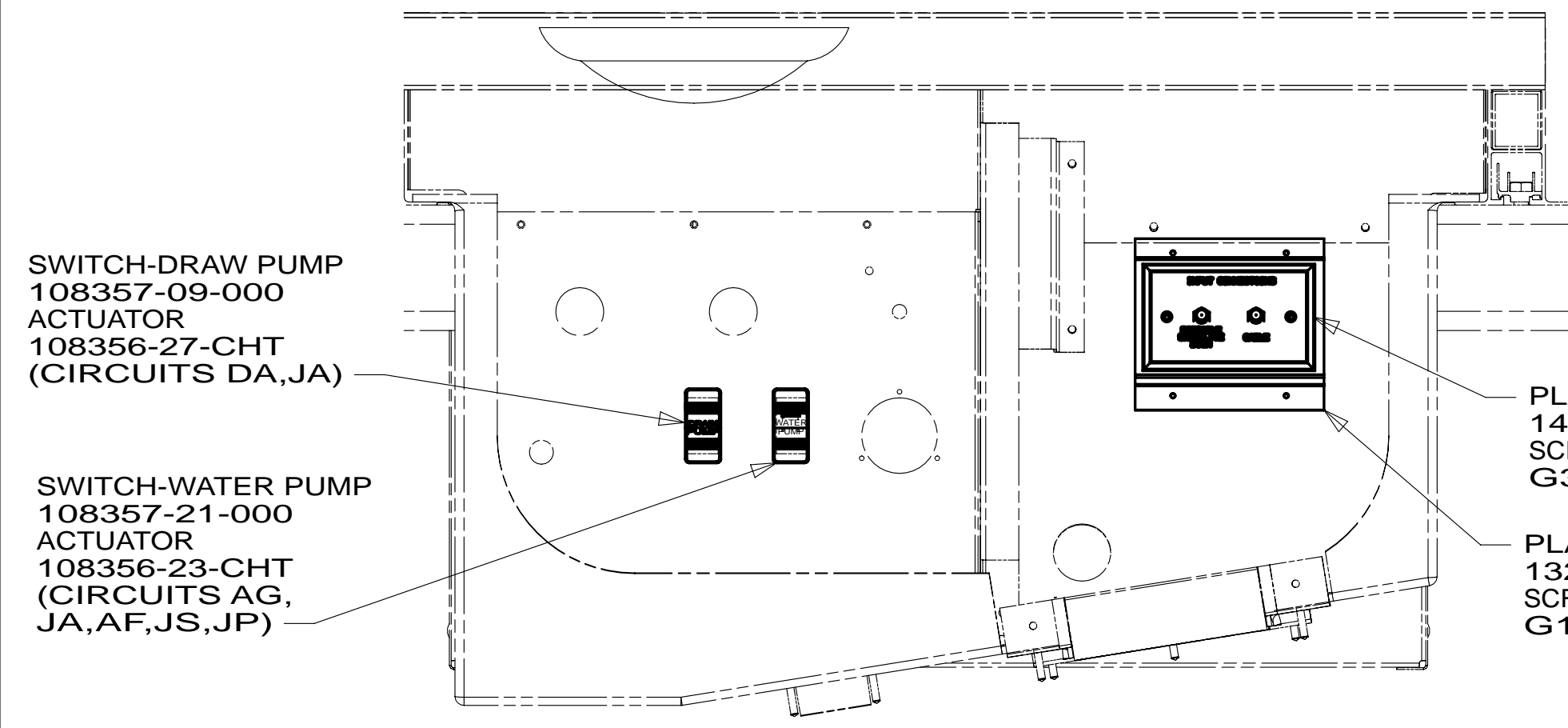
DANGER

Danger of electrical shock, burns or death. Always remove all power sources before attempting any repair, service or diagnostic work. Power can be present from shore power, generator, inverter or battery. All power sources must be disabled and secured before performing any service.

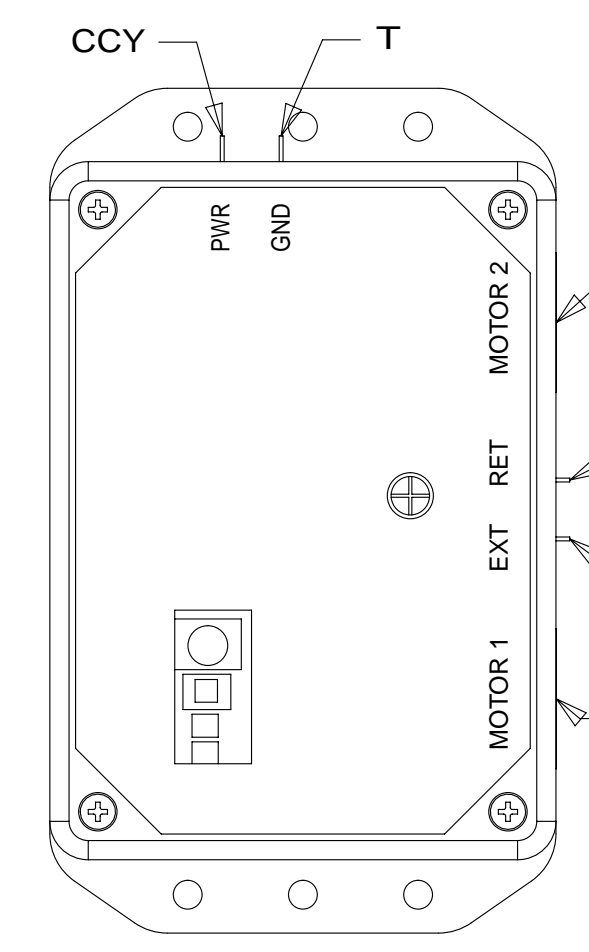


CAUTION

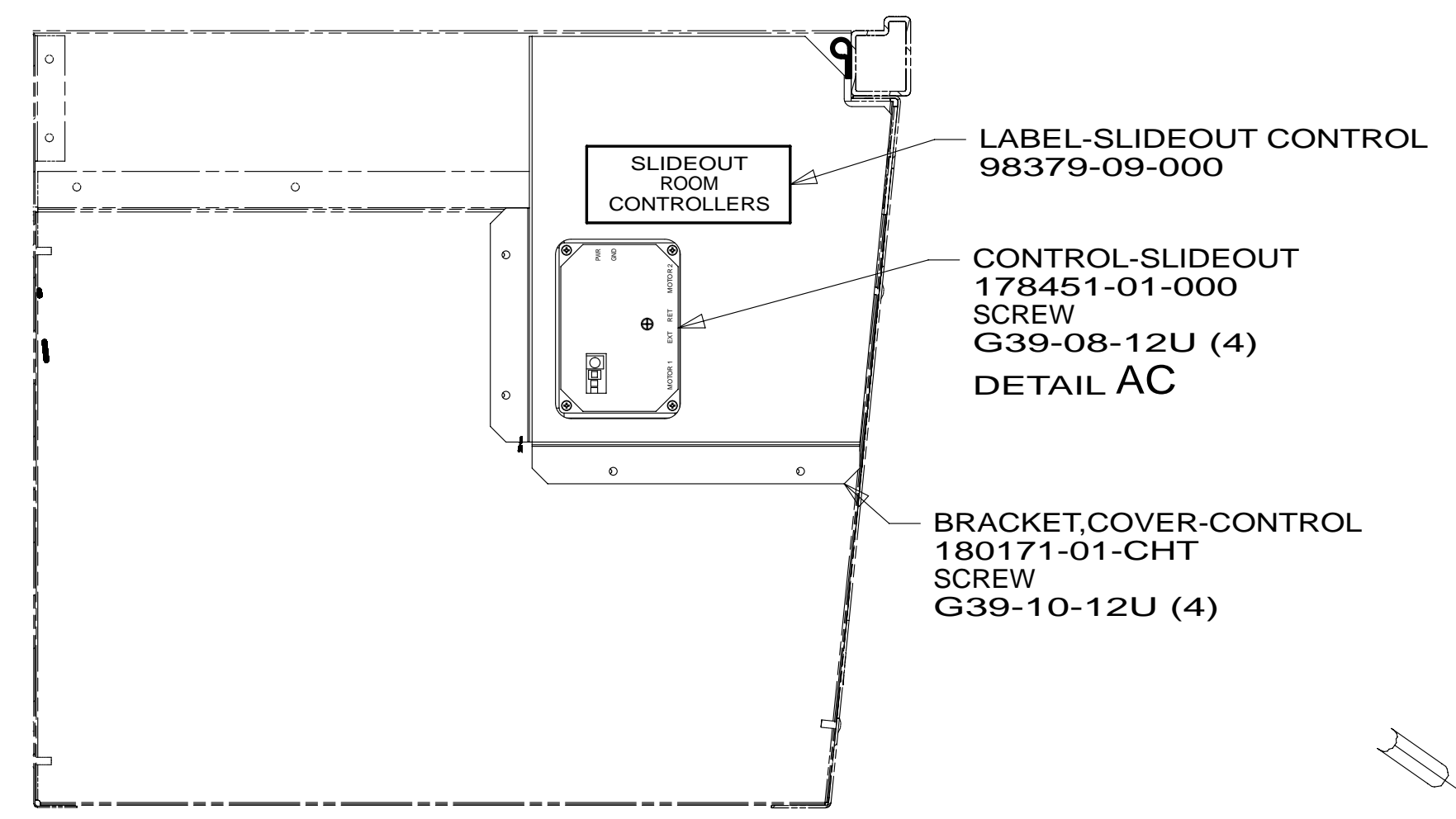
If you lack the skills, tools or equipment to perform diagnostic or repair work leave such work to an authorized Winnebago Industries dealer or other qualified shop.



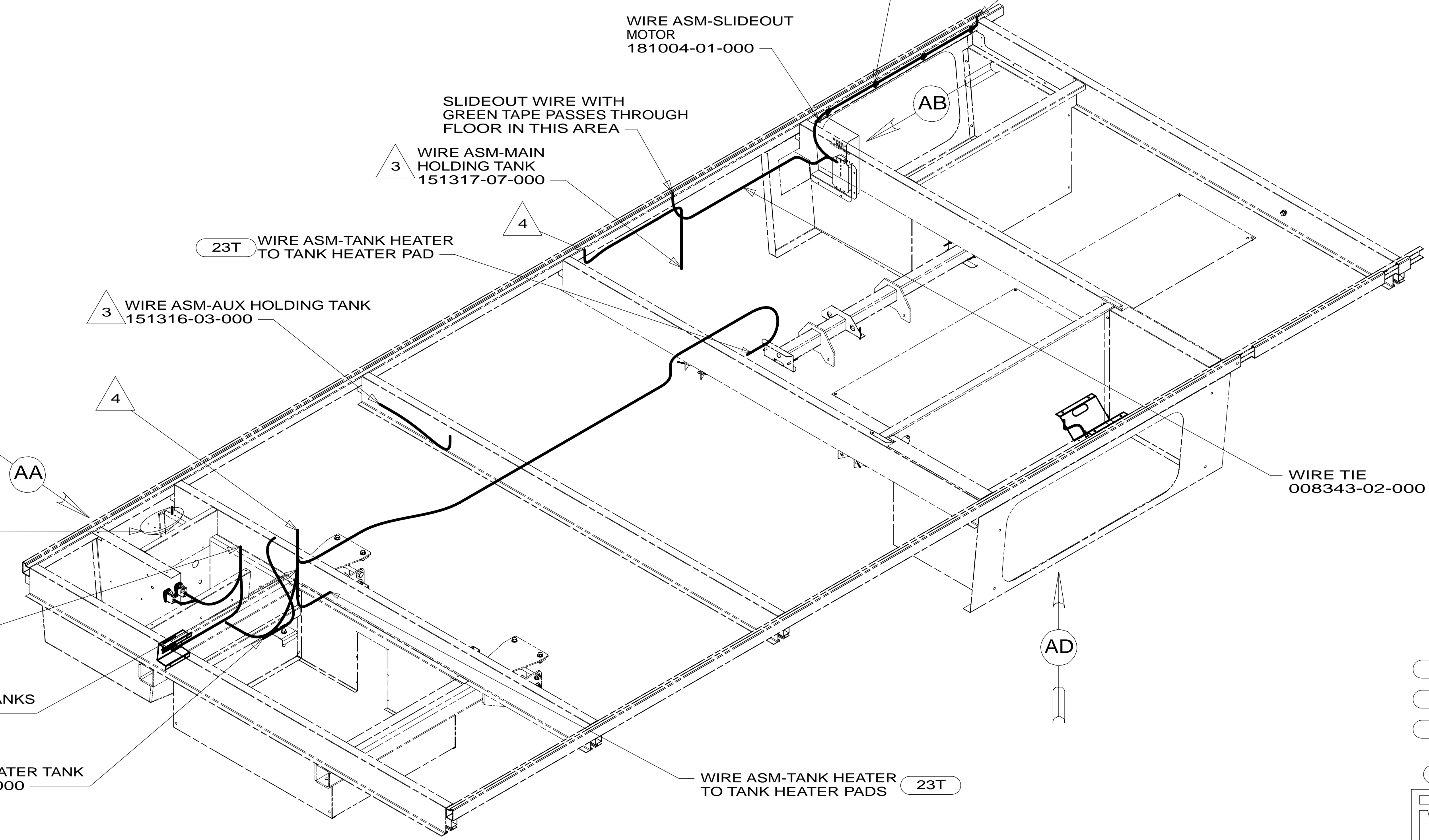
VIEW AA



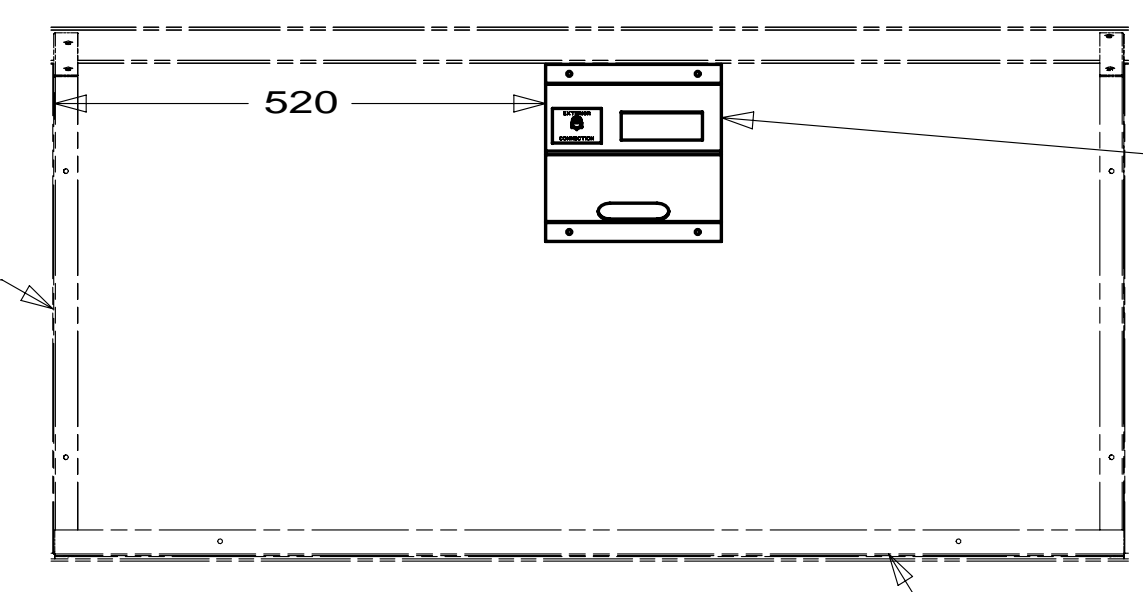
VIEW AC



VIEW AB



VIEW AD



- 6 SECURE WIRE ASM TO HOLDING TANK CRADLE ASM.
- 5 REMOVE BULB SUPPLIED WITH LAMP, SEND BULB TO STOCK AS PART NUMBER 117805-02-000, REPLACE WITH LED BULB.
- 4 WIRE PASSES THROUGH FLOOR IN THIS AREA.
- 3 PLACE CROSS LOCATOR ON SENSORS OVER DIMPLES ON TANK.
2. ROUTE TANK SENSOR WIRES SO THEY DO NOT PASSOVER SENSORS. USE WIRE TIE MOUNT 155366-01-000 AND WIRE TIE 8343-01-000 AS NEEDED. TANK SURFACE MUST BE CLEANED USING ISOPROPYL ALCOHOL AND PRIMED WITH PRIMER 94.
1. ALL WIRES TO BE SECURED WITH CLAMP 10495 OR 10497 OR WIRE TIE 8343 OR 108046 EVERY 600MM, USE SCREW G67-XX-XXX OR G56-XX-XXX AS APPROPRIATE FOR INSTALLATION.

NOTES:

- 23T DRAINAGE SYSTEM-HEATED
- 265 CODES/STANDARDS-CSA/CMVSS
- 1B1 CODES/STANDARDS USA

- 1B1 265

WINNEBAGO COPYRIGHT 2013 WINNEBAGO INDUSTRIES, INC.

DFTR	ORIG. DATE
CHKR	ALL DIMENSIONS ARE IN MILLIMETERS
P.E.	FIRST USED
M.E.	13 524V
DSNR	
UNSPECIFIED TOLERANCES ARE:	
WHOLE DIM (X)	: 3
ONE-PLACE (X.X)	: 1.5
TWO-PLACE (X.XX)	: 0.50
ANGLE	: 1°
THIRD ANGLE PROJECTION	
DO NOT SCALE DRAWING	REFER TO ES0018 FOR FASTENER TIGHTENING GUIDELINES

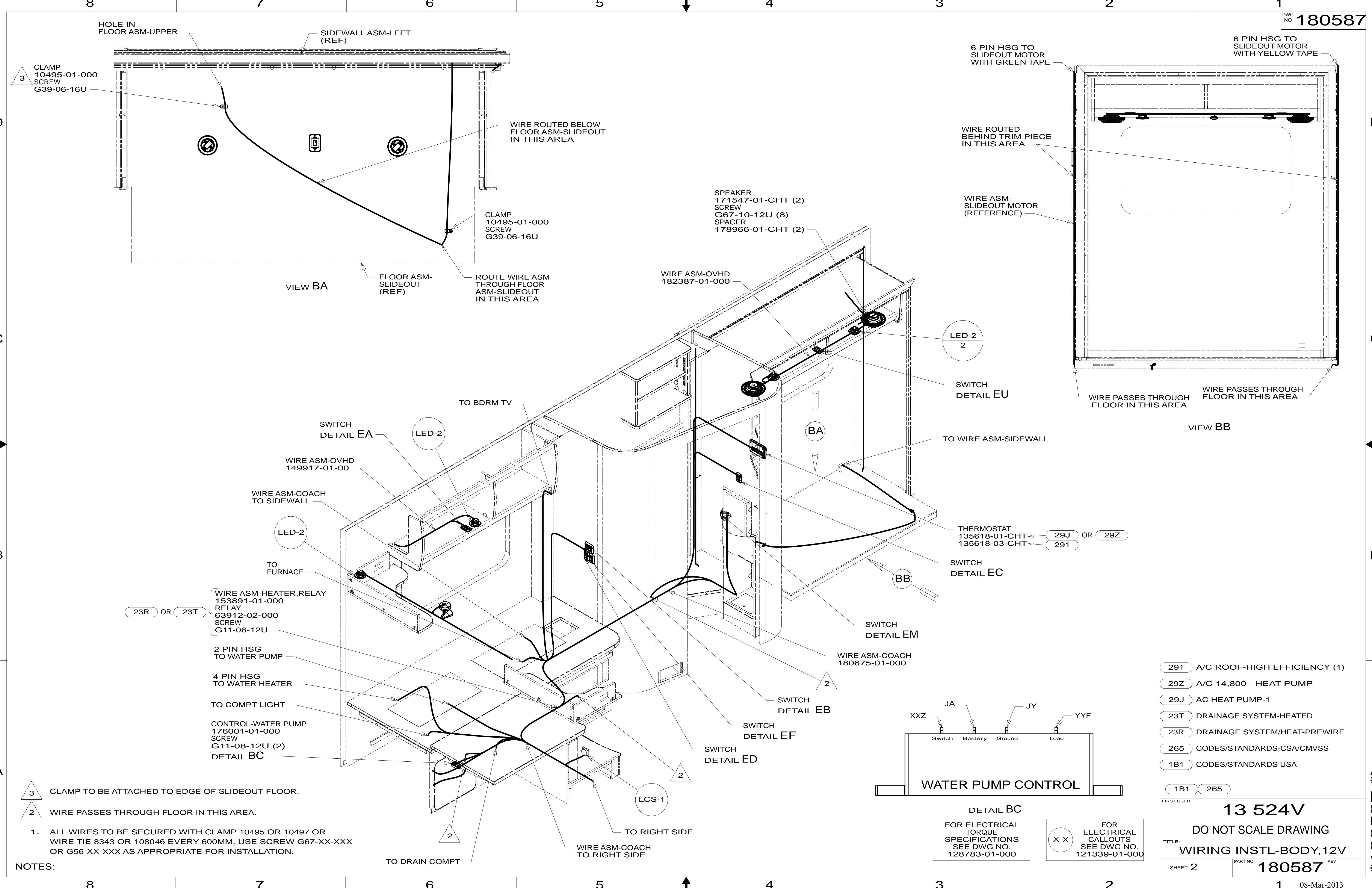
FOR ELECTRICAL TORQUE SPECIFICATIONS SEE DWG NO. 128783-01-000

FOR ELECTRICAL CALLOUTS SEE DWG NO. 121339-01-000

TITLE: **WIRING INSTL-BODY, 12V**

SHEET 1 OF 6 PART NO. **180587** REV

* 180587 *

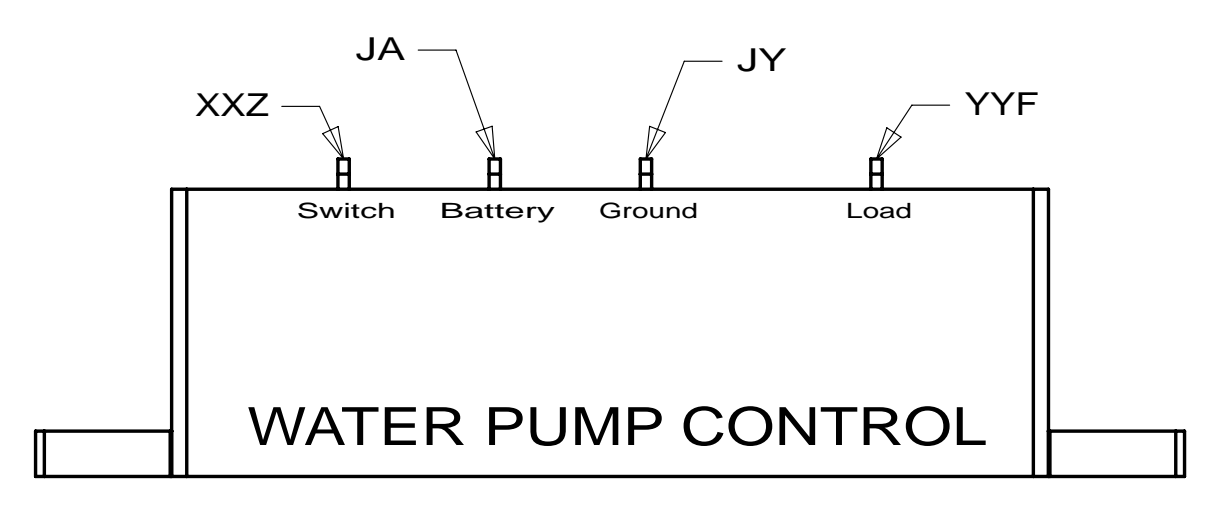


- 3 CLAMP TO BE ATTACHED TO EDGE OF SLIDEOUT FLOOR.
- 2 WIRE PASSES THROUGH FLOOR IN THIS AREA.
1. ALL WIRES TO BE SECURED WITH CLAMP 10495 OR 10497 OR WIRE TIE 8343 OR 108046 EVERY 600MM, USE SCREW G67-XX-XXX OR G56-XX-XXX AS APPROPRIATE FOR INSTALLATION.

NOTES:

- 291 A/C ROOF-HIGH EFFICIENCY (1)
- 29Z A/C 14,800 - HEAT PUMP
- 29J AC HEAT PUMP-1
- 23T DRAINAGE SYSTEM-HEATED
- 23R DRAINAGE SYSTEM/HEAT-PREWIRE
- 265 CODES/STANDARDS-CSA/CMVSS
- 1B1 CODES/STANDARDS USA

FIRST USED	13 524V	
DO NOT SCALE DRAWING		
WIRING INSTL-BODY, 12V		
SHEET 2	PART NO 180587	REV
08-Mar-2013		

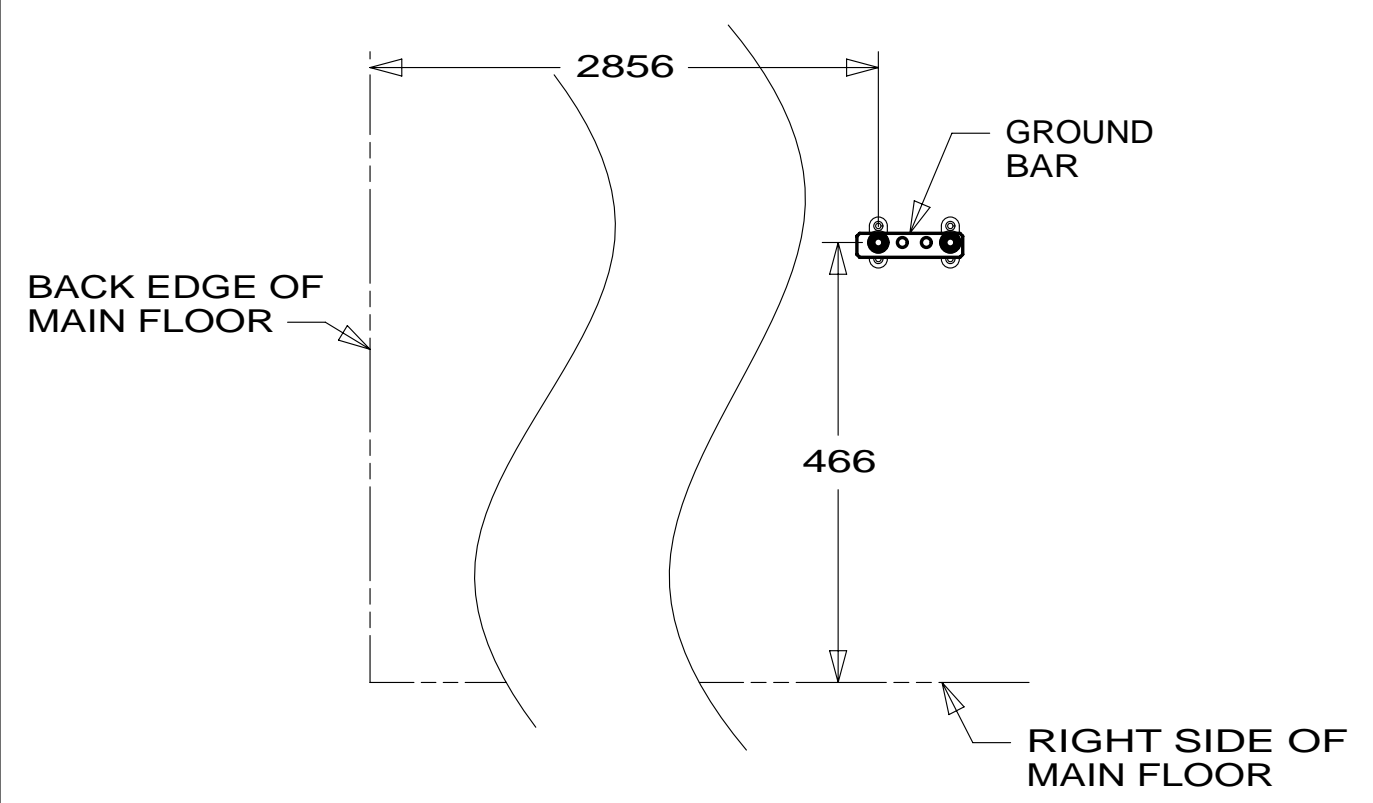
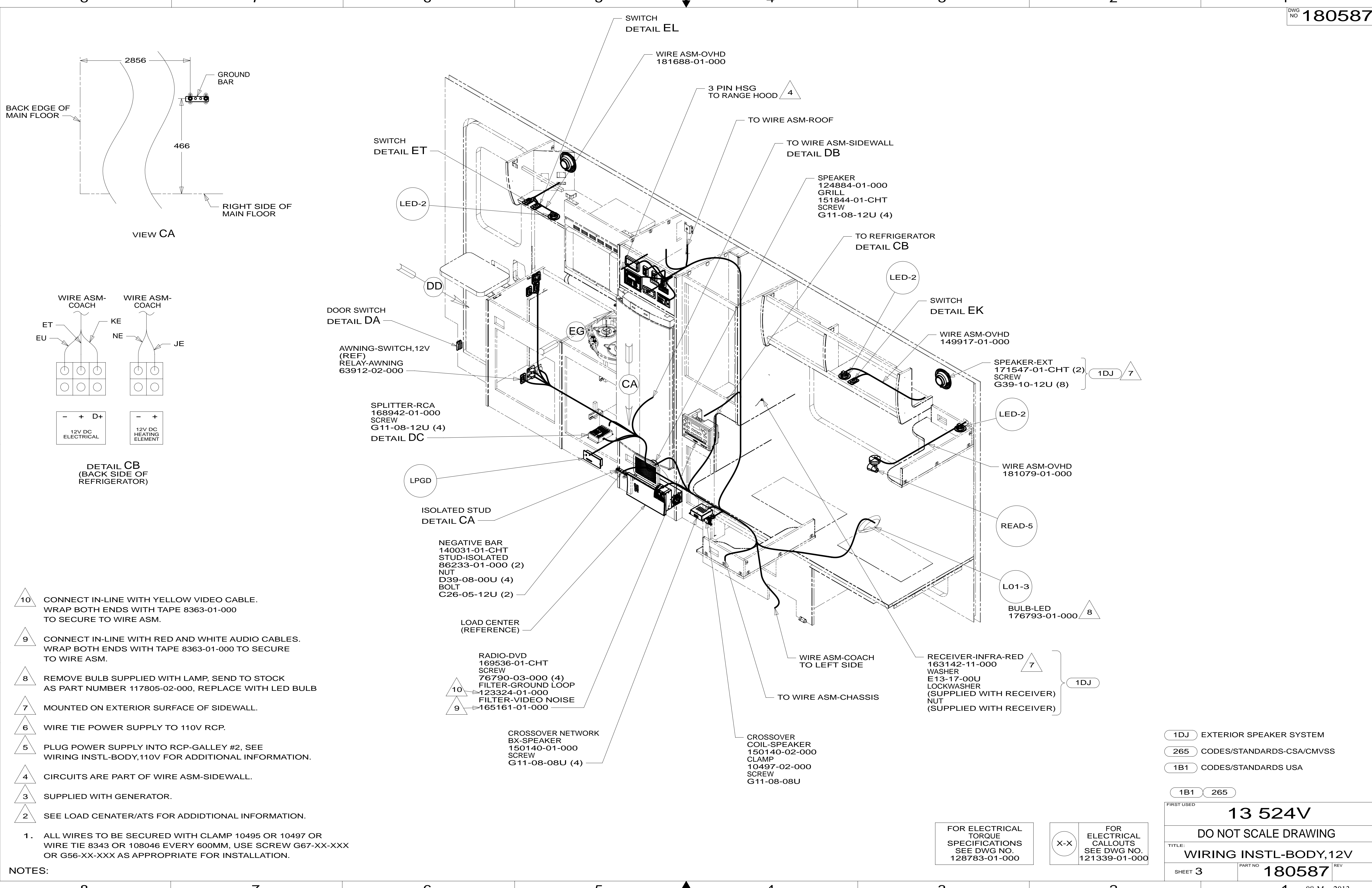


DETAIL BC

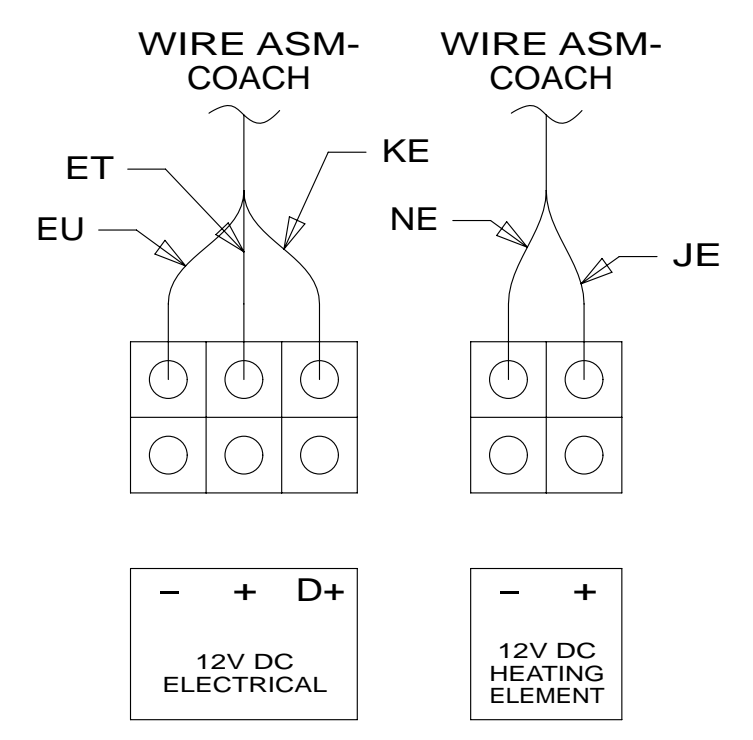
FOR ELECTRICAL TORQUE SPECIFICATIONS SEE DWG NO. 128783-01-000

FOR ELECTRICAL CALLOUTS SEE DWG NO. 121339-01-000

* 180587 *



VIEW CA



DETAIL CB
(BACK SIDE OF REFRIGERATOR)

- 10 CONNECT IN-LINE WITH YELLOW VIDEO CABLE. WRAP BOTH ENDS WITH TAPE 8363-01-000 TO SECURE TO WIRE ASM.
- 9 CONNECT IN-LINE WITH RED AND WHITE AUDIO CABLES. WRAP BOTH ENDS WITH TAPE 8363-01-000 TO SECURE TO WIRE ASM.
- 8 REMOVE BULB SUPPLIED WITH LAMP, SEND TO STOCK AS PART NUMBER 117805-02-000, REPLACE WITH LED BULB
- 7 MOUNTED ON EXTERIOR SURFACE OF SIDEWALL.
- 6 WIRE TIE POWER SUPPLY TO 110V RCP.
- 5 PLUG POWER SUPPLY INTO RCP-GALLEY #2, SEE WIRING INSTL-BODY,110V FOR ADDITIONAL INFORMATION.
- 4 CIRCUITS ARE PART OF WIRE ASM-SIDEWALL.
- 3 SUPPLIED WITH GENERATOR.
- 2 SEE LOAD CENATER/ATS FOR ADDITIONAL INFORMATION.

1. ALL WIRES TO BE SECURED WITH CLAMP 10495 OR 10497 OR WIRE TIE 8343 OR 108046 EVERY 600MM, USE SCREW G67-XX-XXX OR G56-XX-XXX AS APPROPRIATE FOR INSTALLATION.

NOTES:

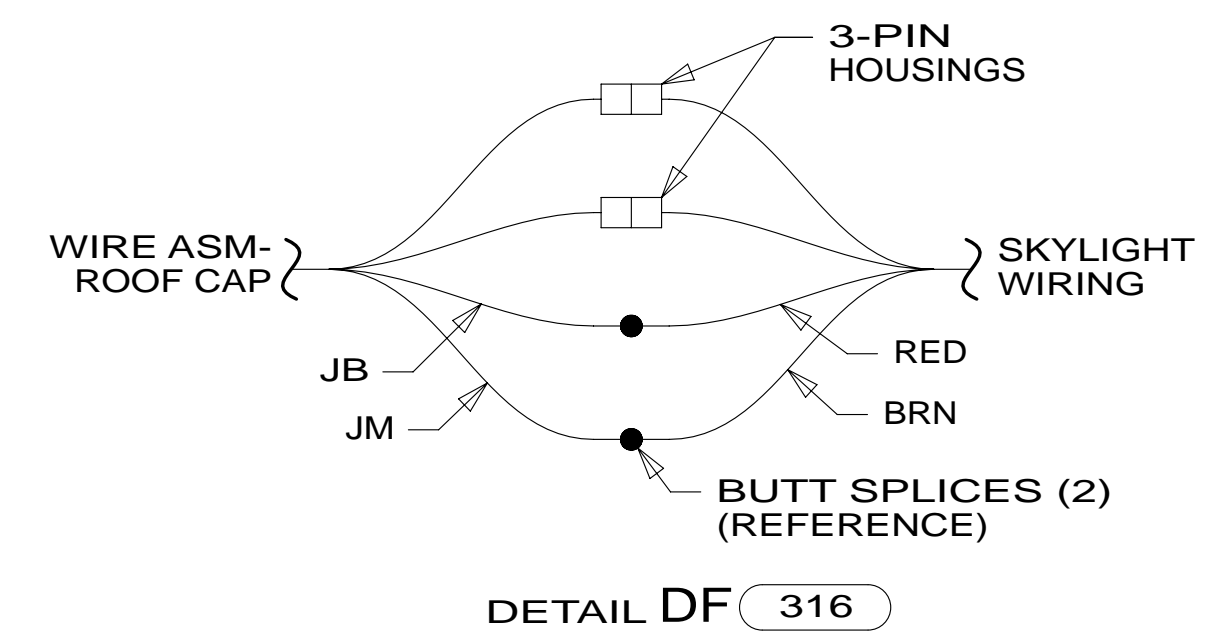
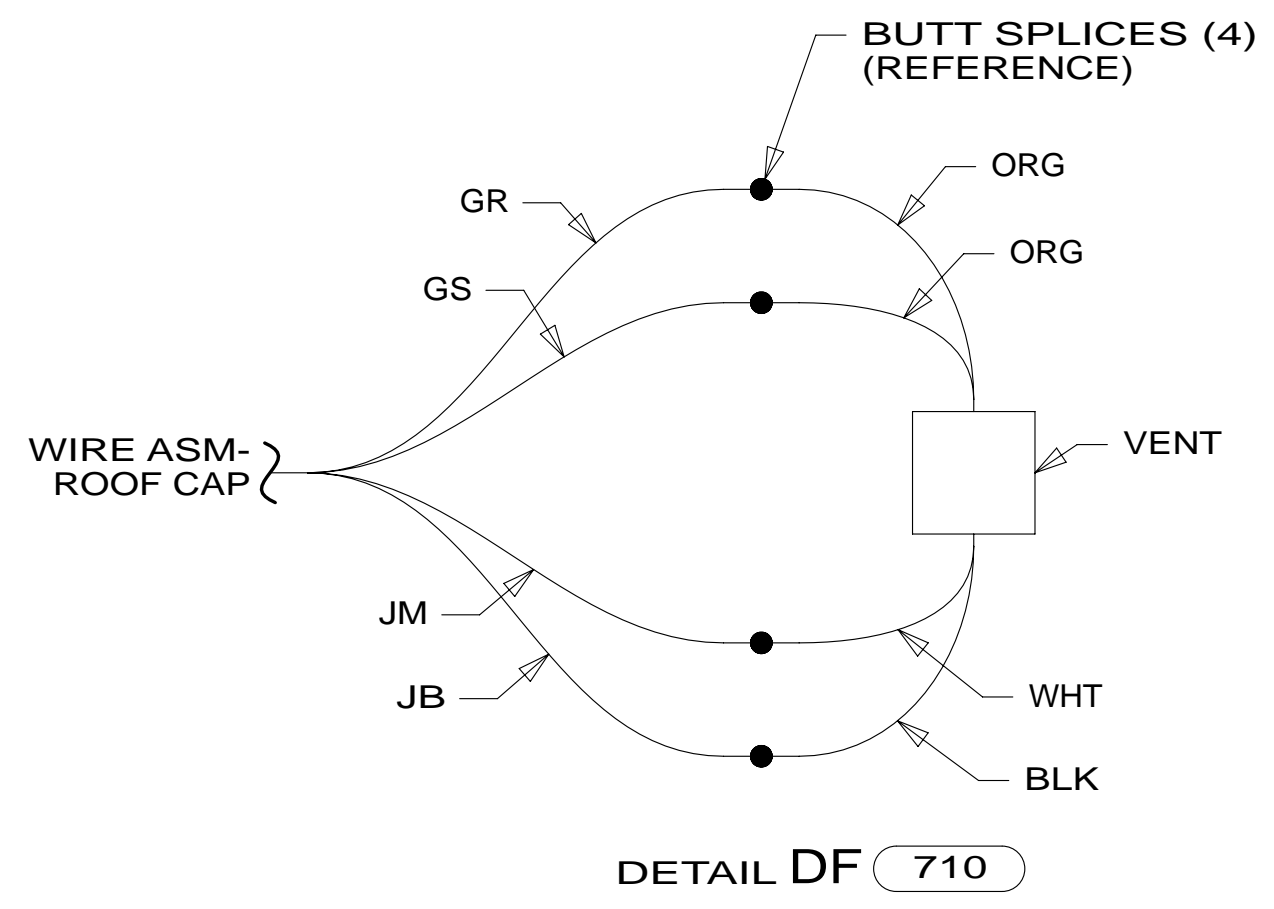
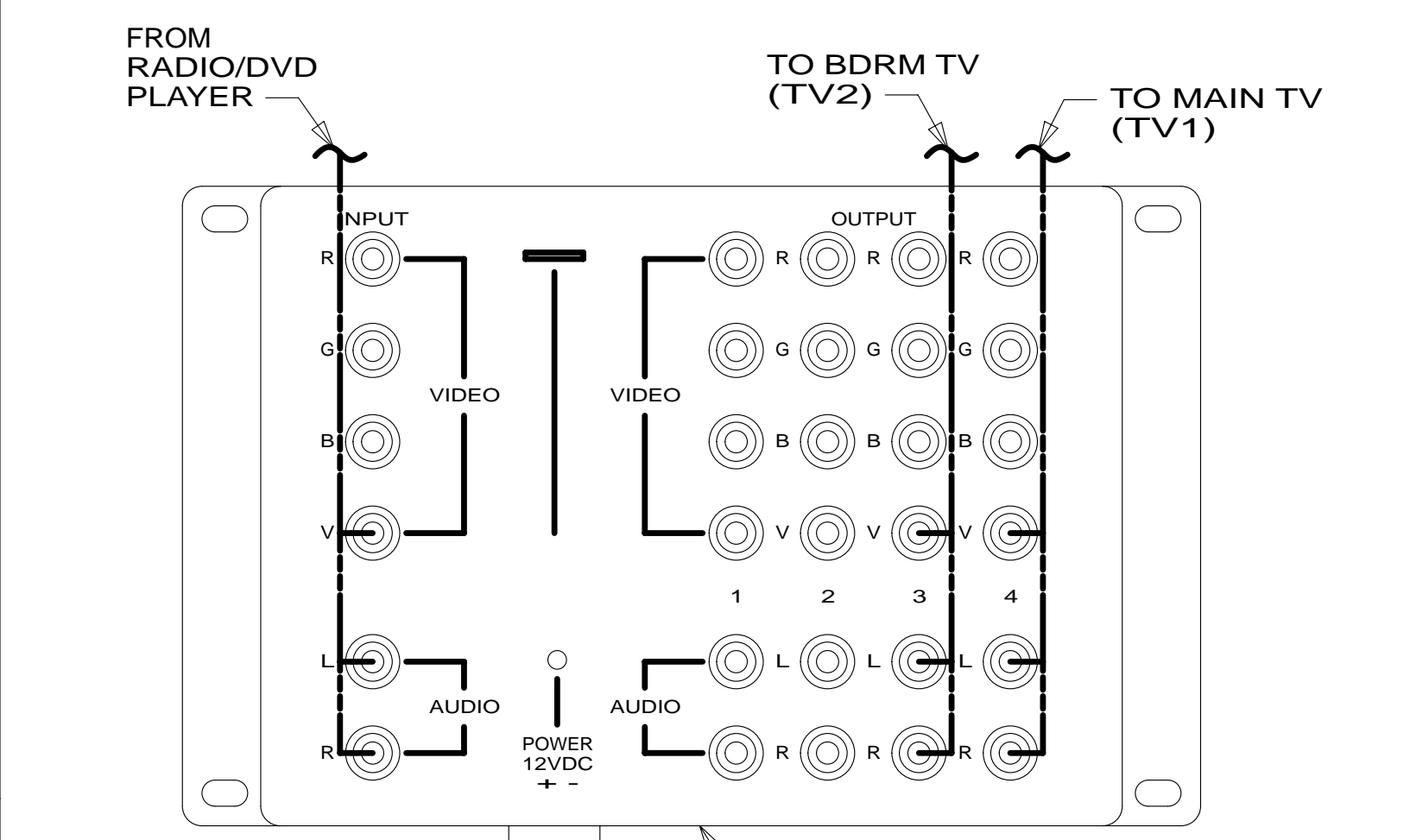
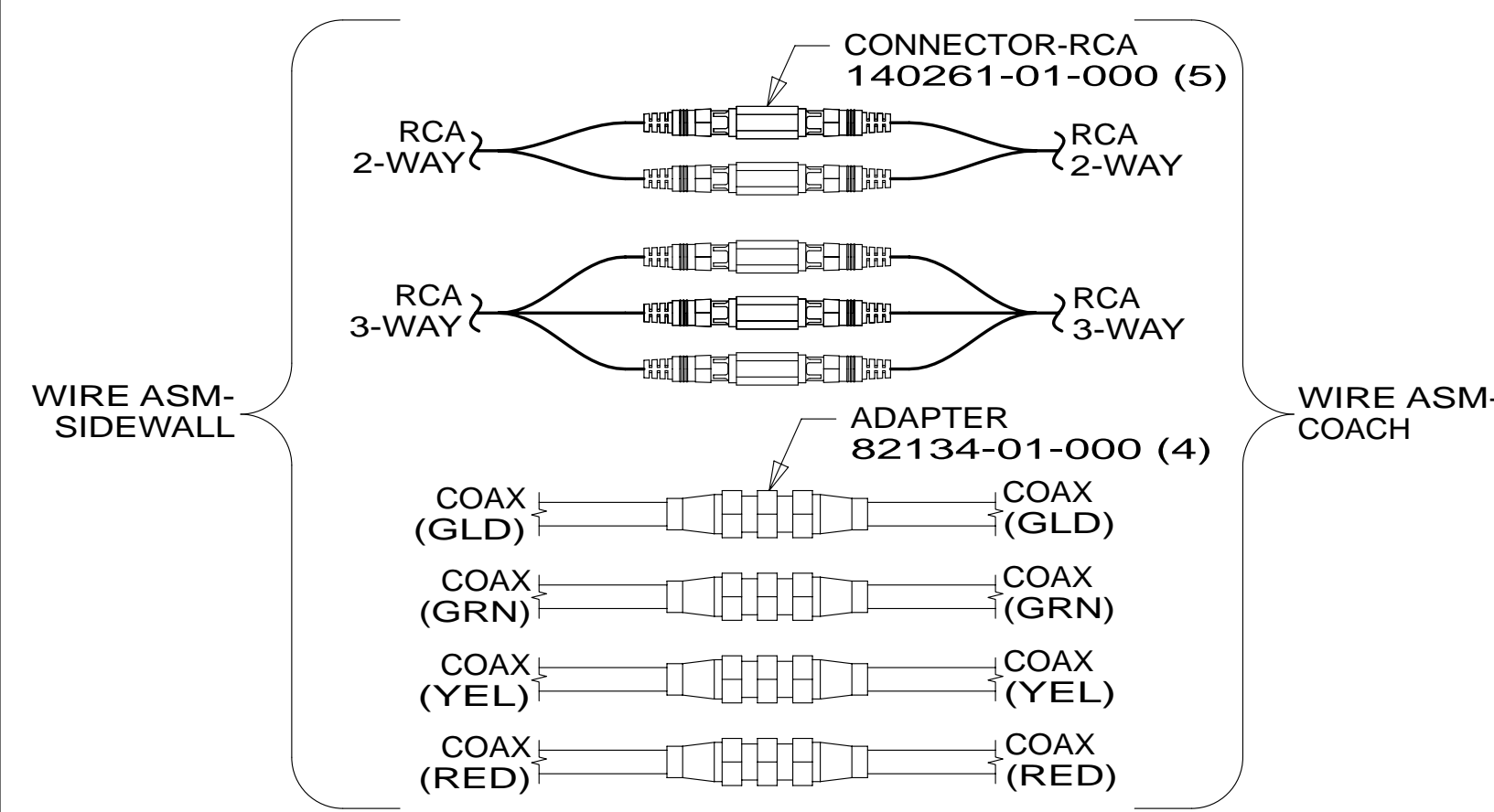
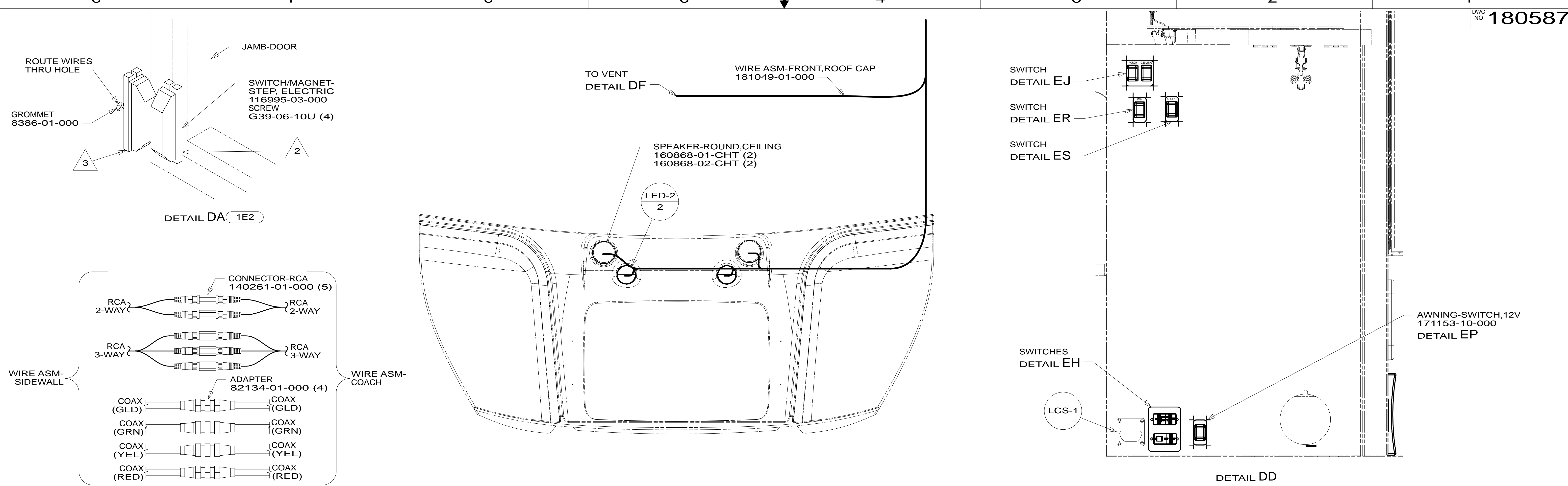
- 1DJ EXTERIOR SPEAKER SYSTEM
- 265 CODES/STANDARDS-CSA/CMVSS
- 1B1 CODES/STANDARDS USA

FIRST USED		13 524V	
DO NOT SCALE DRAWING			
TITLE: WIRING INSTL-BODY,12V			
SHEET 3	PART NO	180587	REV
			08-Mar-2013

FOR ELECTRICAL TORQUE SPECIFICATIONS SEE DWG NO. 128783-01-000

FOR ELECTRICAL CALLOUTS SEE DWG NO. 121339-01-000

* 180587 *



- NOTES:
- 4 SEE WIRING INSTL-BODY, 110V FOR ADDITIONAL INFORMATION.
 - 3 MOUNT SWITCH AND SPACER TO BLOCK ON JAMB. ADJUST HEIGHT TO MATCH MAGNET.
 - 2 MOUNT MAGNET USING PILOT HOLES IN SCREEN DOOR FRAME. MOUNT WITH MAGNET TOWARD SWITCH.
 - 1 FOR REFERENCE ONLY. SEE LOAD CENTER/ATS ASM FOR ADDITIONAL INFORMATION.

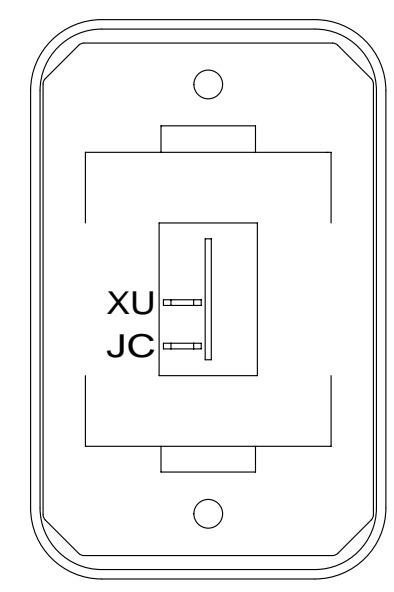
- 710 VENT ROOF-POWERED, INSULATED
- 316 SKYLIGHT/ROOF VENT, POWER
- 23R DRAINAGE SYSTEM/HEAT-PREWIRE
- 23T DRAINAGE SYSTEM-HEATED
- 1E2 ENTRANCE STEP-ELEC.
- 265 CODES/STANDARDS-CSA/CMVSS
- 1B1 CODES/STANDARDS USA

FOR ELECTRICAL TORQUE SPECIFICATIONS SEE DWG NO. 128783-01-000

FOR ELECTRICAL CALLOUTS SEE DWG NO. 121339-01-000

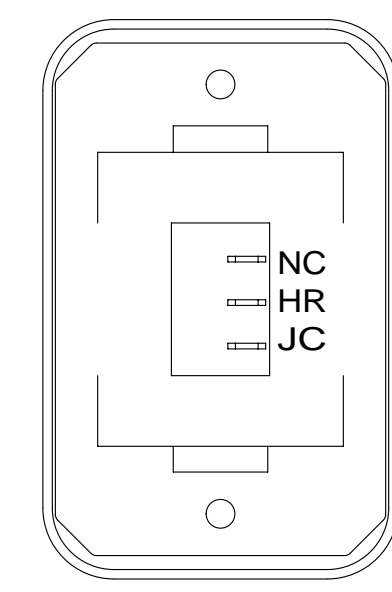
FIRST USED		13 524V	
DO NOT SCALE DRAWING			
TITLE: WIRING INSTL-BODY, 12V			
SHEET 4	PART NO	180587	REV
			08-Mar-2013

* 180587 * A

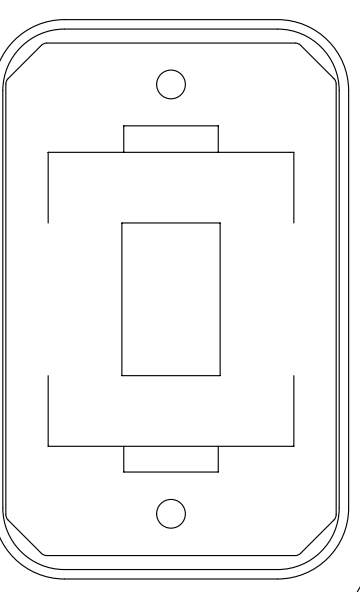


SWITCH-ROCKER
135740-01-CHT
SWITCH-BASE
135741-01-CHT
SWITCH-BEZEL
135742-01-CHT
SCREW
G11-08-08U (2)

DETAIL EA

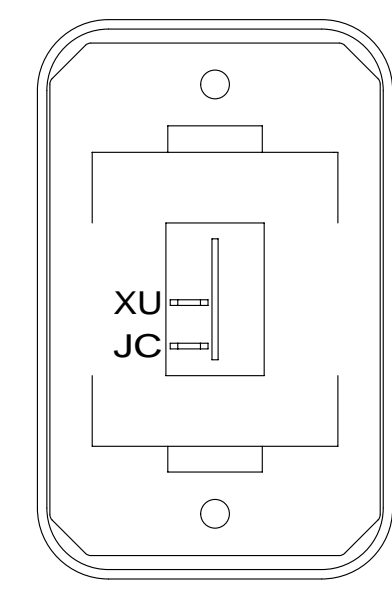


SWITCH-ROCKER
135740-06-CHT
SWITCH-BASE
135741-01-CHT
SWITCH-BEZEL
135742-01-CHT
SCREW
G11-08-08U (2)
LABEL
134563-01-CHT



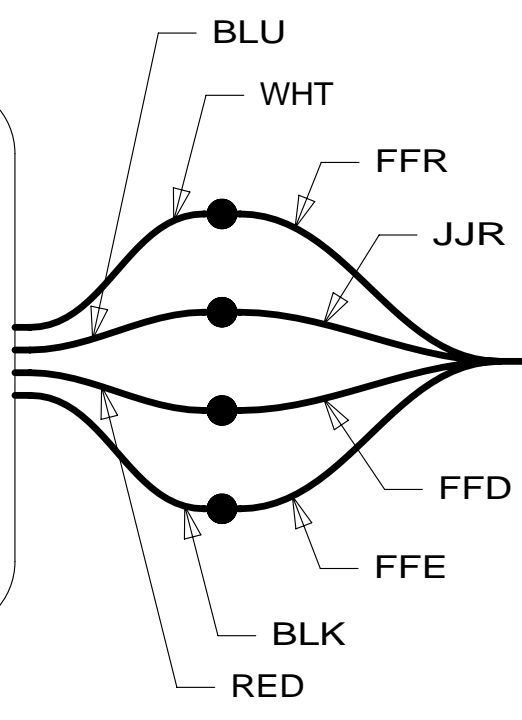
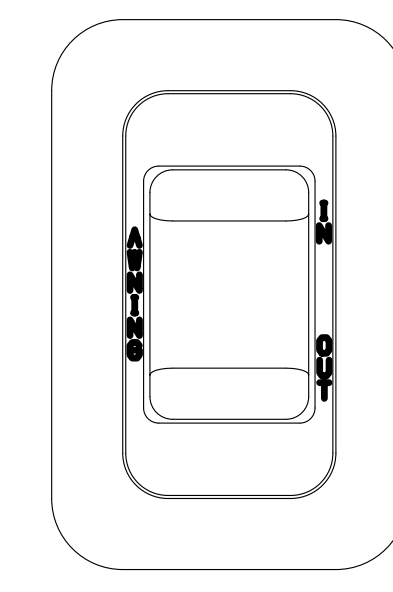
SWITCH-BLANK
138253-01-CHT
SWITCH-BASE
135741-01-CHT
SWITCH-BEZEL
135742-01-CHT
SCREW
G11-08-08U (2)

DETAIL EE ²



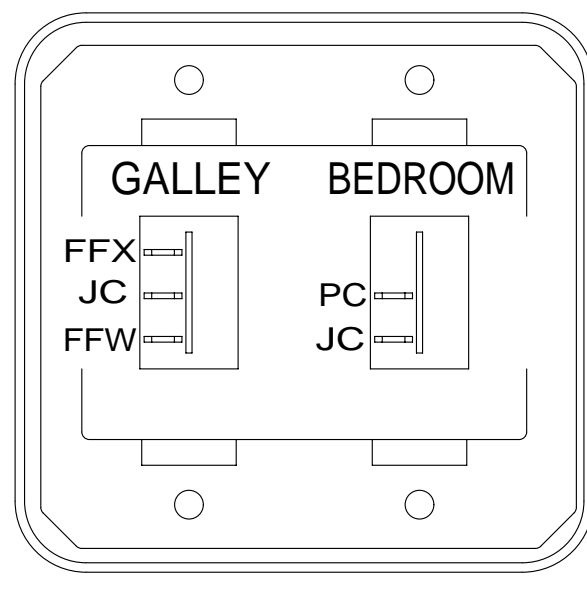
SWITCH-ROCKER
135740-01-CHT
SWITCH-BASE
135741-01-CHT
SWITCH-BEZEL
135742-01-CHT
SCREW
G11-08-08U (2)

DETAIL EL



DETAIL EP

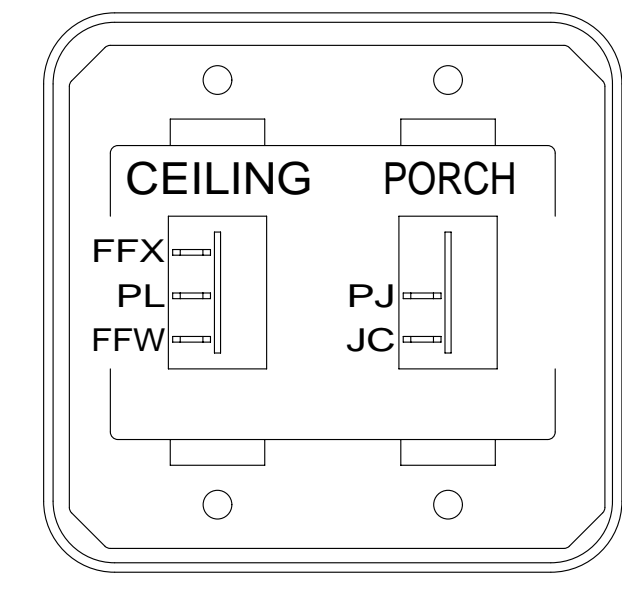
HOLDING TANK HEATER
TURN OFF When Not In Use
SEE OPERATORS MANUAL



SWITCH-ROCKER
135740-01-CHT
135740-02-CHT
SWITCH-BASE
135741-02-CHT
SWITCH-BEZEL
135742-54-CHT
SCREW
G11-08-08U (4)

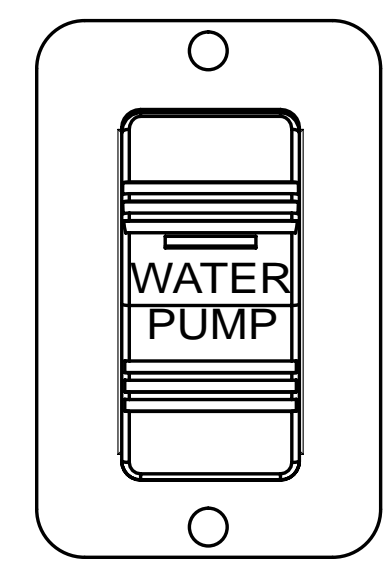
DETAIL EB

DETAIL EE ^{23T} OR ^{23R}



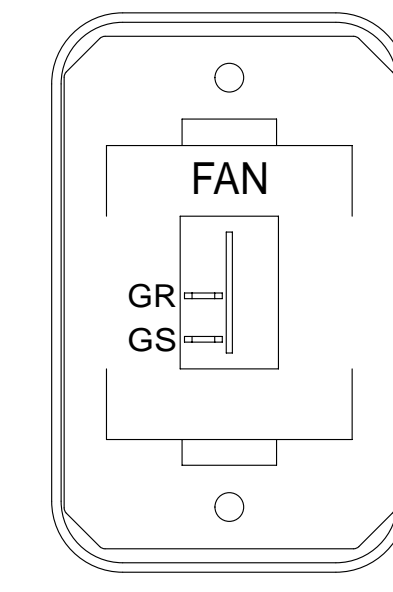
SWITCH-ROCKER
135740-01-CHT
135740-02-CHT
SWITCH-BASE
135741-02-CHT
SWITCH-BEZEL
135742-19-CHT
SCREW
G11-08-08U (4)

DETAIL EJ



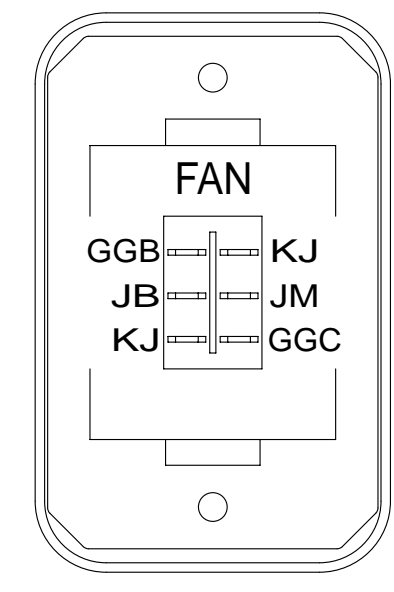
SWITCH-PUMP
108357-21-000
ACTUATOR
108356-23-CHT
PLATE
98351-07-CHT
SCREW
G11-06-10U (2)

DETAIL EM



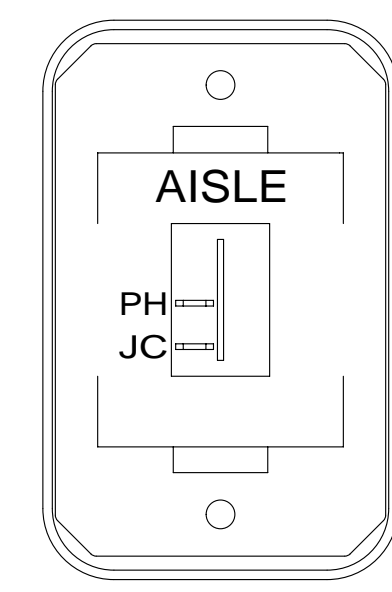
SWITCH-ROCKER
135740-01-CHT
SWITCH-BASE
135741-01-CHT
SWITCH-BEZEL
135742-12-CHT
SCREW
G11-08-08U (2)

DETAIL ER ⁷¹⁰



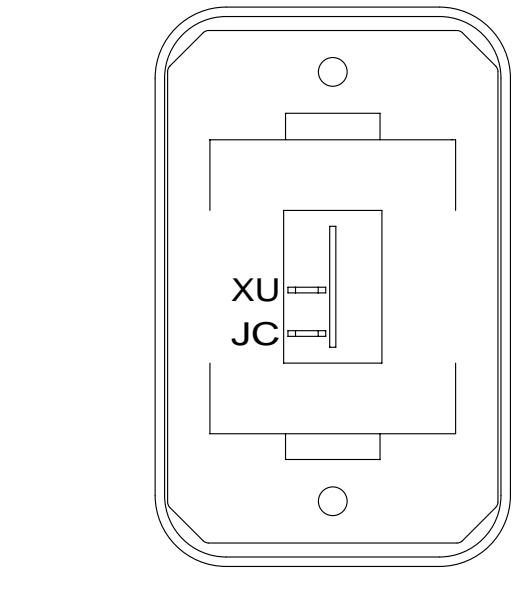
SWITCH-ROCKER
135740-03-CHT
SWITCH-BASE
135741-01-CHT
SWITCH-BEZEL
135742-12-CHT
SCREW
G11-08-08U (2)

DETAIL ER ³¹⁶



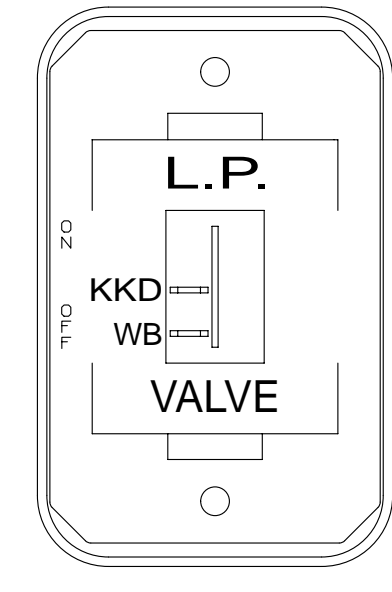
SWITCH-ROCKER
135740-01-CHT
SWITCH-BASE
135741-01-CHT
SWITCH-BEZEL
135742-06-CHT
SCREW
G11-08-08U (2)

DETAIL EF



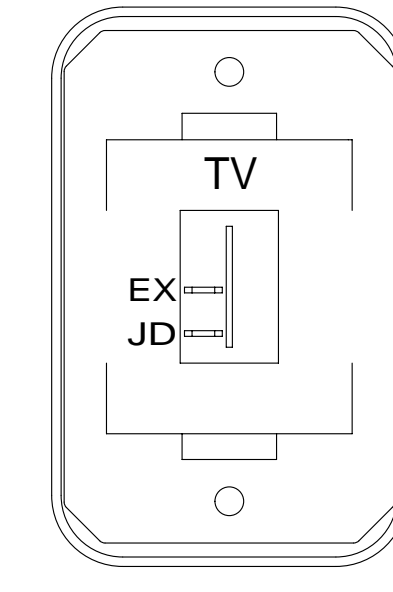
SWITCH-ROCKER
135740-01-CHT
SWITCH-BASE
135741-01-CHT
SWITCH-BEZEL
135742-01-CHT
SCREW
G11-08-08U (2)

DETAIL EK



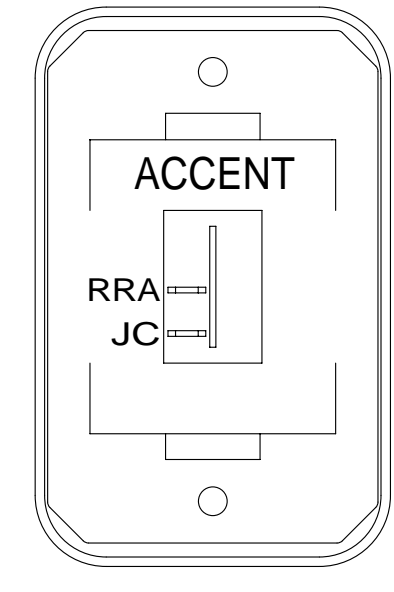
SWITCH-ROCKER
135740-01-CHT
SWITCH-BASE
135741-01-CHT
SWITCH-BEZEL
135742-59-CHT
SCREW
G11-08-08U (2)

DETAIL EN



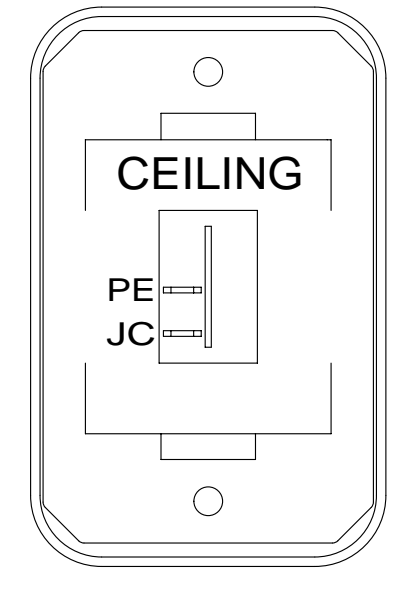
SWITCH-ROCKER
135740-01-CHT
SWITCH-BASE
135741-01-CHT
SWITCH-BEZEL
135742-45-CHT
SCREW
G11-08-08U (2)

DETAIL ET



SWITCH-ROCKER
135740-01-CHT
SWITCH-BASE
135741-01-CHT
SWITCH-BEZEL
135742-50-CHT
SCREW
G11-08-08U (2)

DETAIL ES



SWITCH-ROCKER
135740-01-CHT
SWITCH-BASE
135741-01-CHT
SWITCH-BEZEL
135742-07-CHT
SCREW
G11-08-08U (2)

DETAIL EC

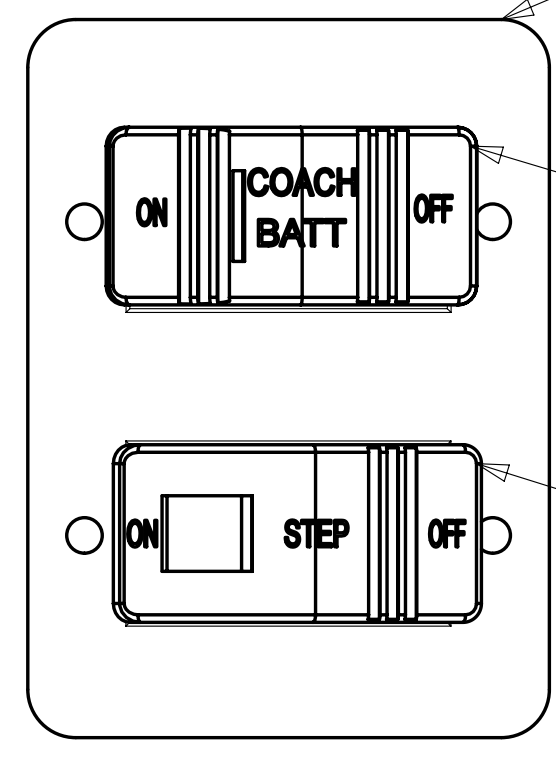
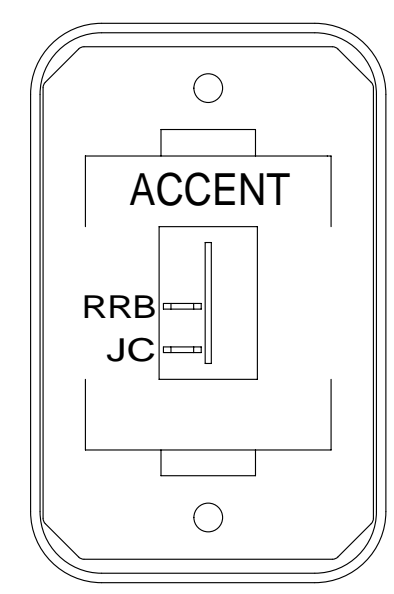


PLATE
158431-17-CHT
SCREW
G11-06-10U (4)

SWITCH-BATTERY
108357-18-000
ACTUATOR
108356-19-CHT
(CIRCUITS KF,LG,
LJ,LJ,KF,KF,LK)

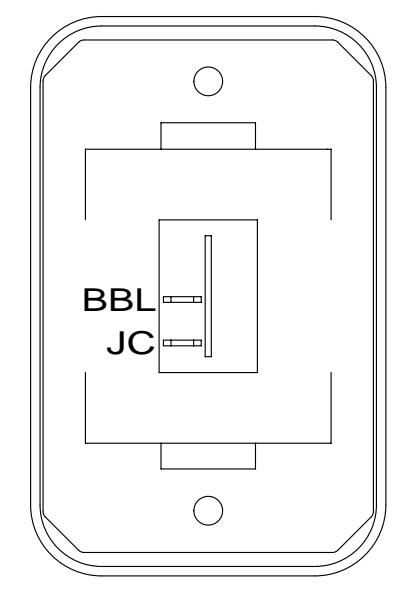
SWITCH-STEP
108357-19-000
(CIRCUITS ER,ES)

DETAIL EH



SWITCH-ROCKER
135740-01-CHT
SWITCH-BASE
135741-01-CHT
SWITCH-BEZEL
135742-50-CHT
SCREW
G11-08-08U (2)

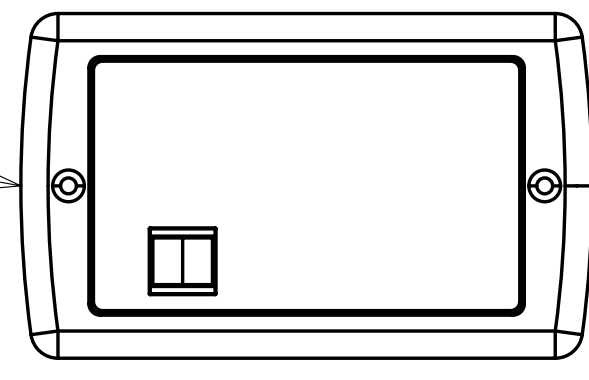
DETAIL ED



SWITCH-ROCKER
135740-01-CHT
SWITCH-BASE
135741-01-CHT
SWITCH-BEZEL
135742-01-CHT
SCREW
G11-08-08U (2)

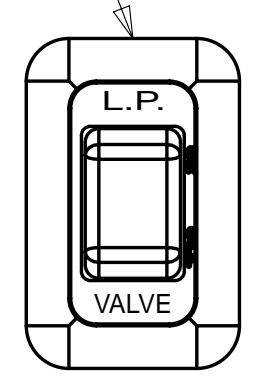
DETAIL EU

¹ 33F CONTROL-GENERATOR (REFERENCE)



³²¹ OR ^{52G} PANEL-MONITOR
175724-01-000
³²³ OR ^{33F} 175724-02-000
SCREW
G11-08-08U (4)

SWITCH
DETAIL EN



SWITCH
DETAIL EE

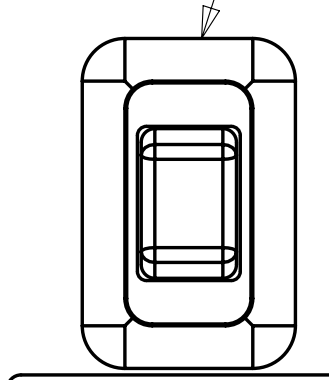
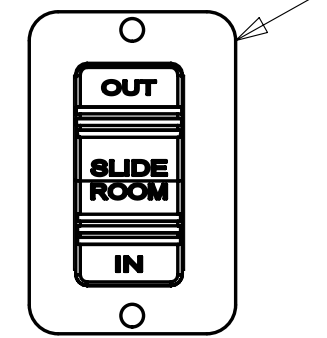


PLATE-SWITCH
144363-02-CHT
SWITCH
108357-06-000
ACTUATOR
108356-24-CHT
SCREW
G11-08-10U(2)
(CIRCUITS DR,DT,DU)
RELAY
63912-02-000

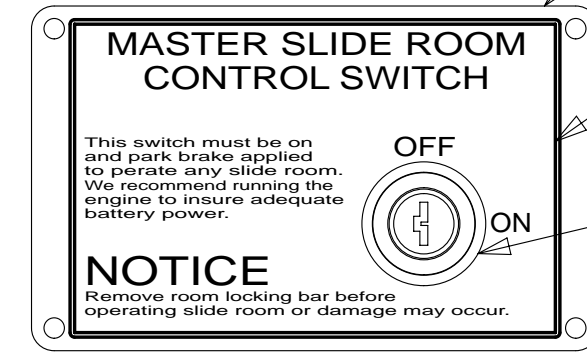


HOLDING TANK HEATER
TURN OFF When Not In Use
SEE OPERATORS MANUAL

WARNING
CRUSH HAZARD. Keep people and objects clear of the inside and outside of the slide room when operating. Failure to comply could result in death or serious injury.

LABEL-WARNING
116549-02-000

PLATE-KEY, SLIDE ROOM
163987-01-CHT
SCREW
76790-05-000 (4)



LABEL-SLIDROOM CONTROL, MAN
163988-01-CHT

SWITCH-KEY,SPST-ILLINOIS LCK
163097-01-000
(CONNECTS TO CIRCUITS DT & ER)

REMOTE PANEL-INVERTER
173337-02-000
MODULE-12V DISC
173355-01-000

FOR ELECTRICAL TORQUE SPECIFICATIONS SEE DWG NO. 128783-01-000

FOR ELECTRICAL CALLOUTS SEE DWG NO. 121339-01-000

- ⁴⁰¹ INVERTER-DC/AC, 1000 WATT
- ³¹⁶ SKYLIGHT/ROOF VENT, POWER
- ⁷¹⁰ VENT ROOF-POWERED,INSULATED
- ³²¹ GENERATOR PREP KIT
- ^{52G} GEN-3.6KW ONAN LP MICROQUIET
- ³²³ GENERATOR PREP KIT - DIESEL
- ^{33F} GEN-3.2 KW ONAN DIESEL
- ^{23R} DRAINAGE SYSTEM/HEAT-PREWIRE
- ^{23T} DRAINAGE SYSTEM-HEATED
- ²⁶⁵ CODES/STANDARDS-CSA/CMVSS
- ^{1B1} CODES/STANDARDS USA

FIRST USED	
13 524V	
DO NOT SCALE DRAWING	
TITLE: WIRING INSTL-BODY,12V	
SHEET 5	PART NO 180587 REV

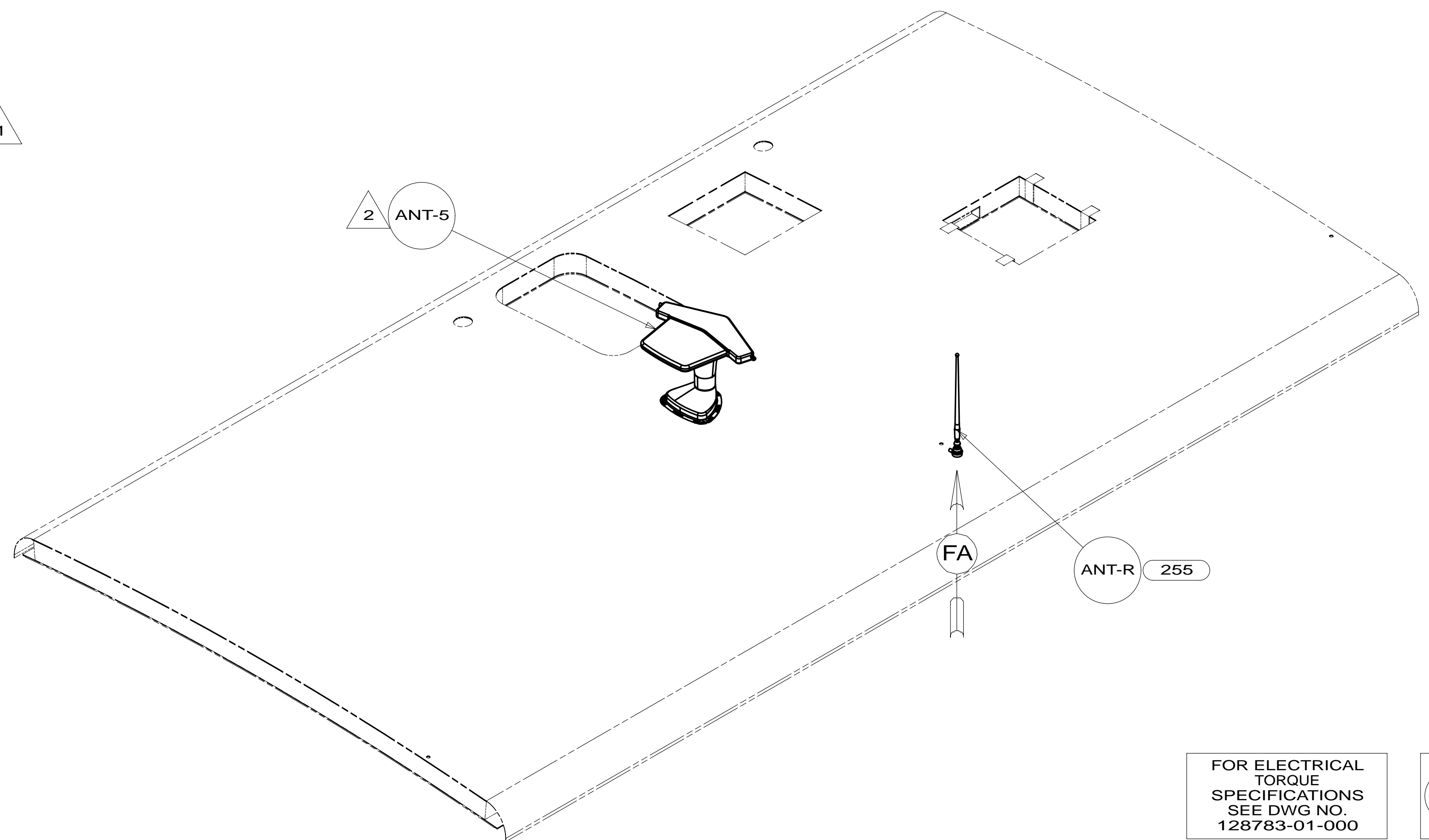
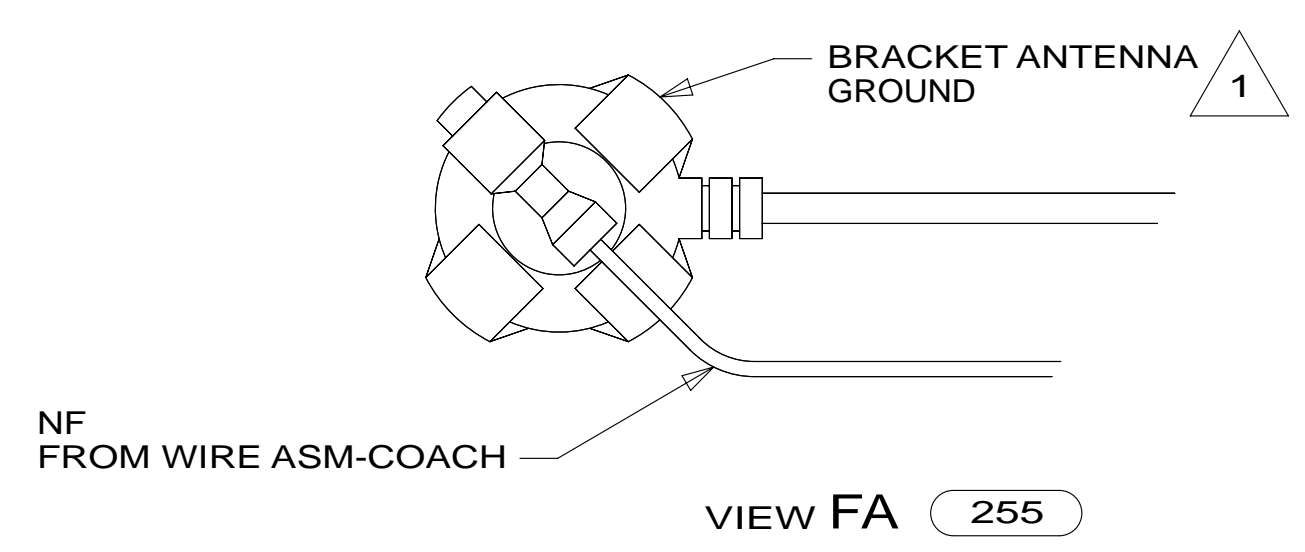
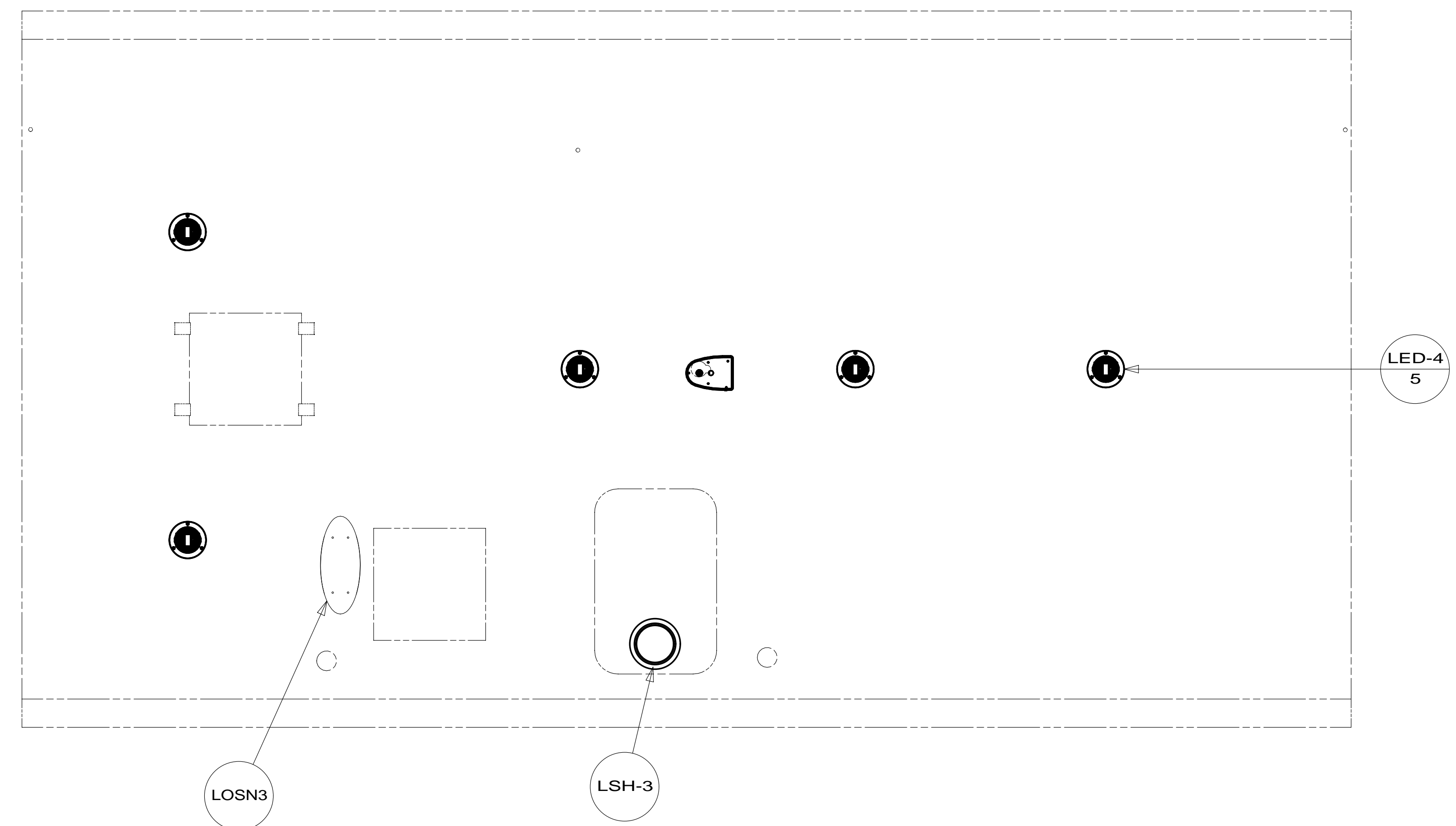
² WITHOUT ^{23T} OR ^{23R}

¹ SUPPLIED WITH GENERATOR.

NOTES:

VIEW EG

* 180587 A



- NOTES:
- 2 SEE ANTENNA INSTALLATION MANUAL FOR CORRECT INSTALLATION PROCEDURE.
 - 1 WRAP BRACKET LEGS AROUND ANTENNA BASE.

FOR ELECTRICAL TORQUE SPECIFICATIONS SEE DWG NO. 128783-01-000

FOR ELECTRICAL CALLOUTS SEE DWG NO. 121339-01-000

- 48Q SATELLITE TV SYSTEM MANUAL
- 255 RADIO/AM/FM/CD/DVD, COACH
- 265 CODES/STANDARDS-CSA/CMVSS
- 1B1 CODES/STANDARDS USA

FIRST USED	13 524V	
DO NOT SCALE DRAWING		
TITLE: WIRING INSTL-BODY, 12V		
SHEET 6	PART NO 180587	REV
		08-Mar-2013

* 180587 * A