



**DANGER**

**Danger of electrical shock, burns or death.** Always remove all power sources before attempting any repair, service or diagnostic work. Power can be present from shore power, generator, inverter or battery. All power sources must be disabled and secured before performing any service.

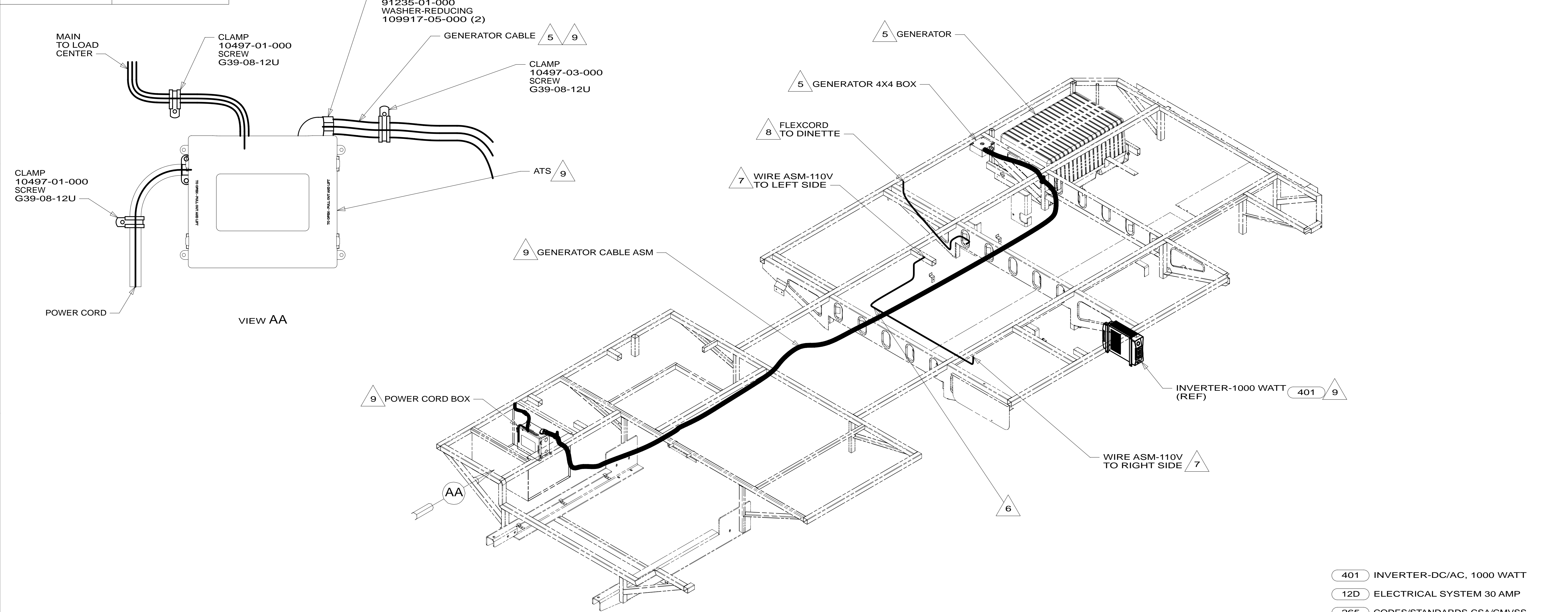


**CAUTION**

If you lack the skills, tools or equipment to perform diagnostic or repair work leave such work to an authorized Winnebago Industries dealer or other qualified shop.

DRAWING NO.	FEATURES
180578-01	-----
180578-11	1B1 12D
180578-15	265 12D

RELEASE	REV/DATE	DWG NO	180578
REV ZONE	REVISION RECORD	DATE	DFT-ORIG



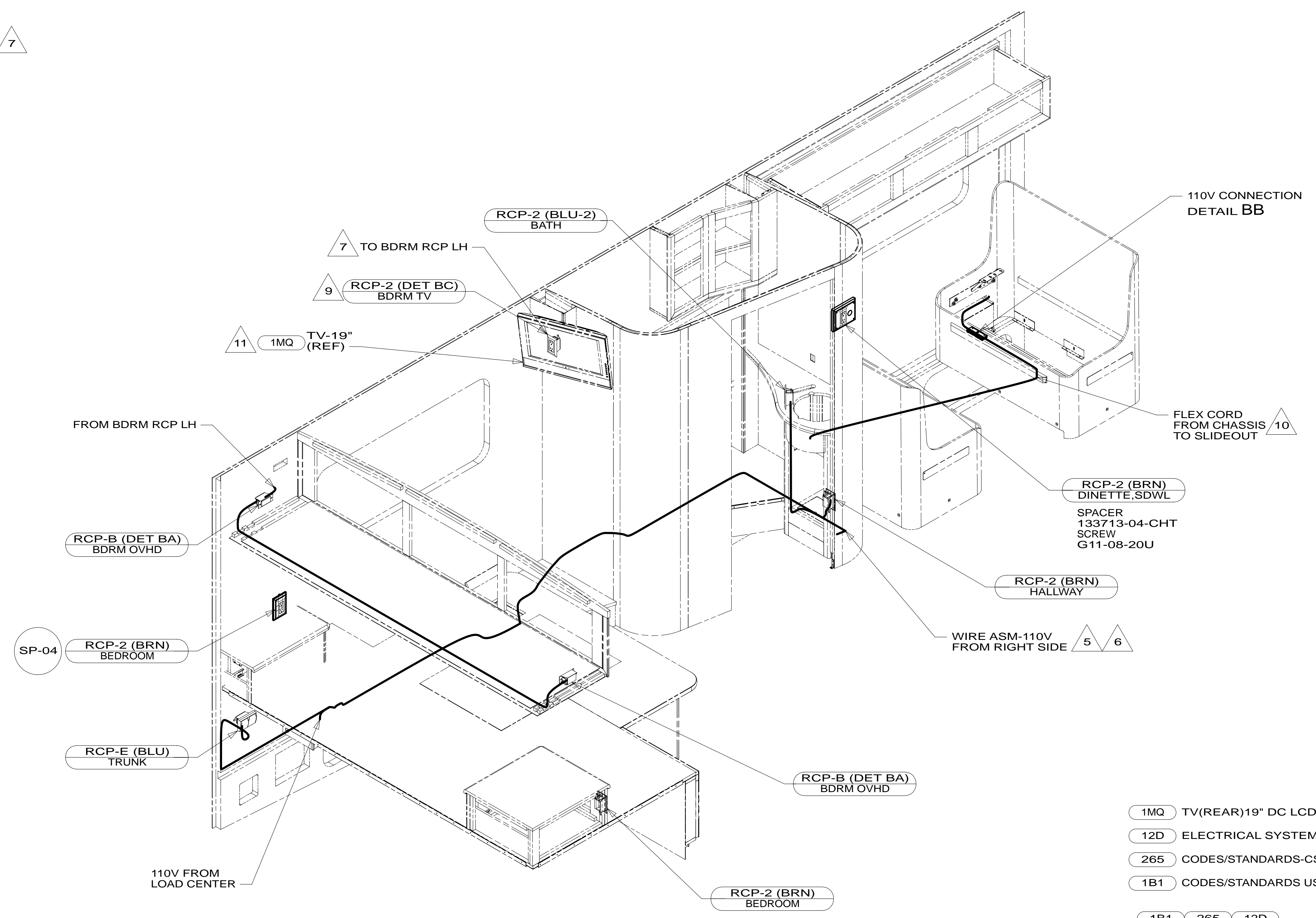
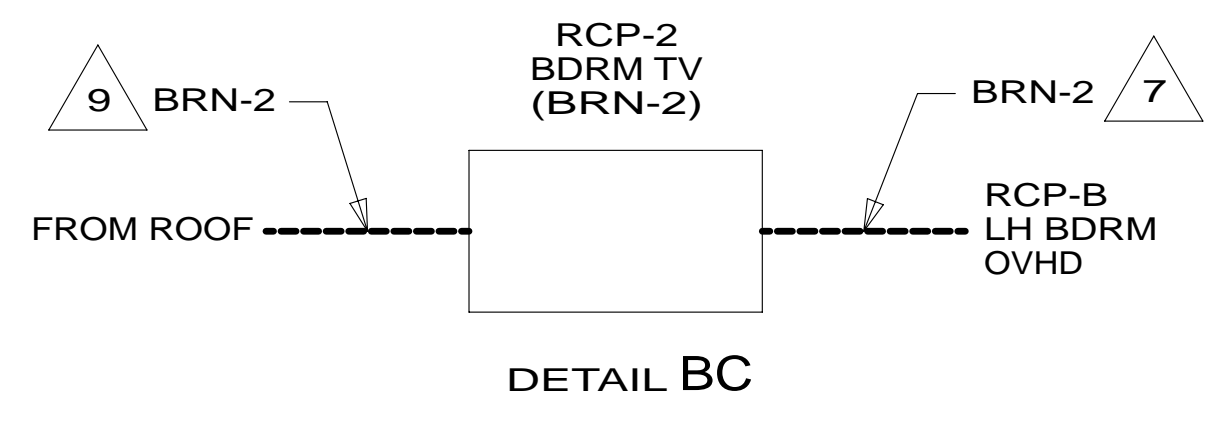
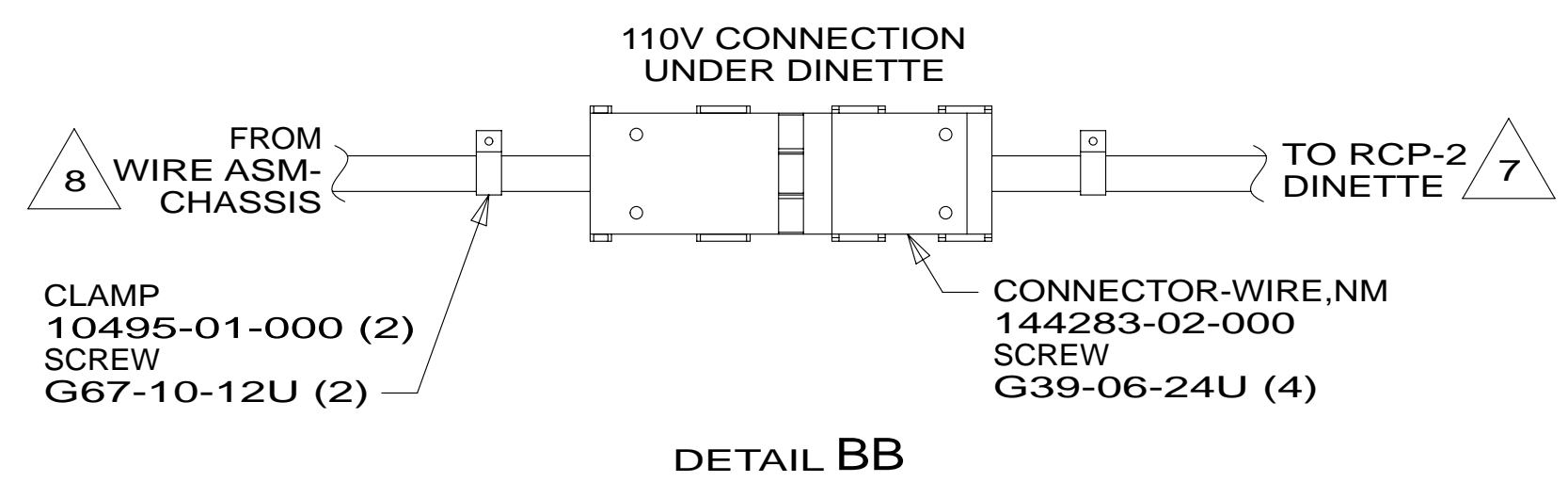
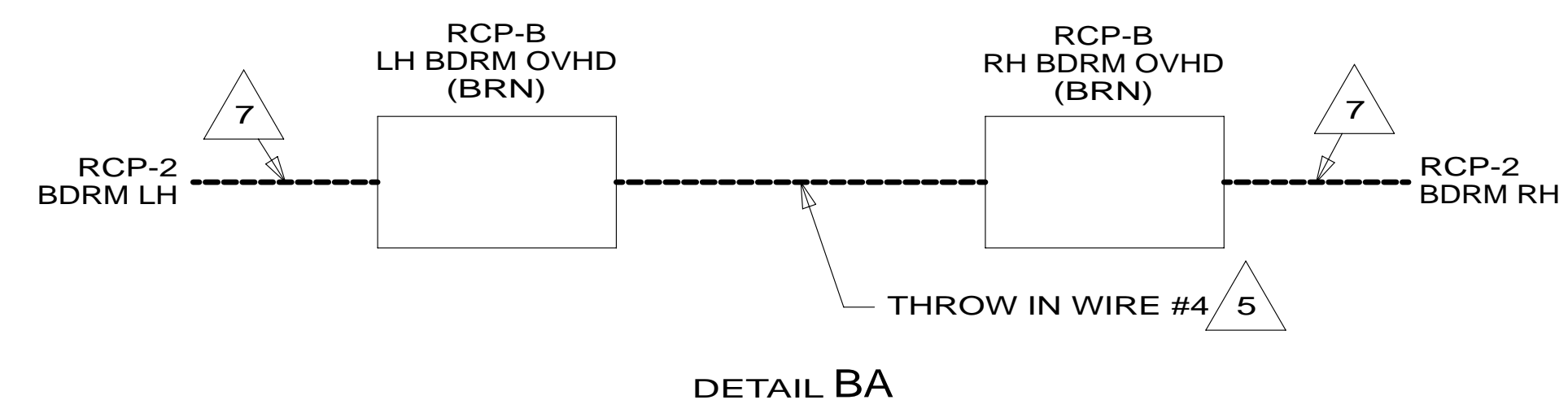
- 9 SEE LOAD CENTER/ATS ASM FOR ADDITIONAL INFORMATION.
- 8 FLEX CORD IS PART OF WIRE ASM-CHASSIS.
- 7 WIRE ASM-110V PASSES THROUGH FLOOR IN THIS AREA.
- 6 WIRE ASM-110V ROUTED UNDER FLOOR IN THIS AREA.
- 5 SEE GENERATOR INSTL FOR ADDITIONAL INFORMATION.
4. SEE WIRING DIAGRAM-BODY,110V FOR ADDITIONAL INFORMATION.
3. ALL GROUND WIRE TO BE COVERED WITH TUBING 8041-02-000.
2. ALL 110V WIRE TO BE CLAMPED WITH CLAMP 10497-05-000 WITHIN 200MM OF OUTLET BOXES, USE SCREW G67-10-12B.
1. ALL WIRES TO BE SECURED WITH CLAMP 10495-01-000 OR CLIP 80734-01-000 EVERY 600MM. USE SCREW G67-10-12B UNLESS OTHERWISE SPECIFIED.

- 401 INVERTER-DC/AC, 1000 WATT
- 12D ELECTRICAL SYSTEM 30 AMP
- 265 CODES/STANDARDS-CSA/CMVSS
- 1B1 CODES/STANDARDS USA

		COPYRIGHT 2011 WINNEBAGO INDUSTRIES, INC.
DFT-ORIG	ORIG. DATE	
CHKR		ALL DIMENSIONS ARE IN MILLIMETERS
P.E.		
M.E.	FIRST USED	13 727K
DSNR		
UNSPECIFIED TOLERANCES ARE:		MATERIAL:
WHOLE DIM (X)	: 3	
ONE-PLACE (X.X)	: 1.5	
TWO-PLACE (X.XX)	: 0.50	
ANGLE	: 1'	
THIRD ANGLE PROJECTION		
DO NOT SCALE DRAWING	REFER TO ES0018 FOR FASTENER TIGHTENING GUIDELINES	
TITLE: WIRING INSTL-BODY,110V		
SHEET 1 OF 3	PART NO	180578
REF:		1

FOR ELECTRICAL TORQUE SPECIFICATIONS SEE DWG NO. 128783-01-000

X-X FOR ELECTRICAL CALLOUTS SEE DWG NO. 121339-01-000



- NOTES:
- 11 SEE WIRING INSTL-TV/DVD FOR ADDITIONAL INFORMATION.
  - 10 FLEX CORD IS PART OF WIRE ASM-CHASSIS.
  - 9 WIRE ROUTED IN ROOF.
  - 8 ROUTED BELOW FLOOR WITH WIRE ASM-CHASSIS.
  - 7 WIRE ROUTED IN SIDEWALL.
  - 6 WIRE ROUTED THROUGH FLOOR AT THIS POINT.
  - 5 SEE LOAD CENTER/ATS ASM FOR ADDITIONAL INFORMATION.
  - 4. SEE WIRING DIAGRAM-BODY,110V FOR ADDITIONAL INFORMATION.
  - 3. ALL GROUND WIRE TO BE COVERED WITH TUBING 8041-02-000.
  - 2. ALL 110V WIRE TO BE CLAMPED WITH CLAMP 10497-05-000 WITHIN 200MM OF OUTLET BOXES, USE SCREW G67-10-12B.
  - 1. ALL WIRES TO BE SECURED WITH CLAMP 10495-01-000 OR CLIP 80734-01-000 EVERY 600MM. USE SCREW G67-10-12B UNLESS OTHERWISE SPECIFIED.

- 1MQ TV(REAR)19" DC LCD STEREO
- 12D ELECTRICAL SYSTEM 30 AMP
- 265 CODES/STANDARDS-CSA/CMVSS
- 1B1 CODES/STANDARDS USA

FOR ELECTRICAL TORQUE SPECIFICATIONS SEE DWG NO. 128783-01-000

FOR ELECTRICAL CALLOUTS SEE DWG NO. 121339-01-000

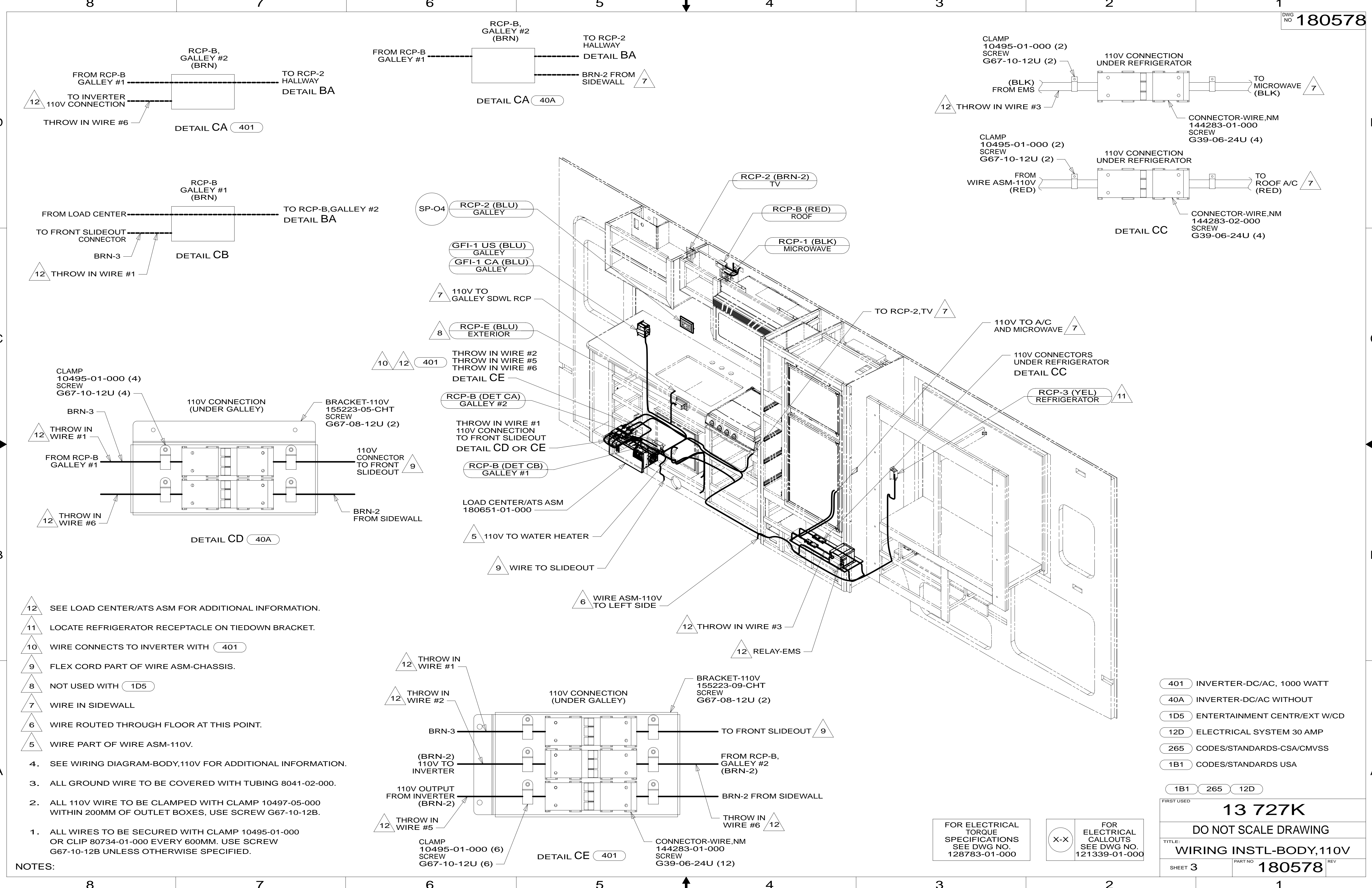
FIRST USED

**13 727K**

DO NOT SCALE DRAWING

TITLE: **WIRING INSTL-BODY,110V**

SHEET 2 PART NO **180578** REV



- 12 SEE LOAD CENTER/ATS ASM FOR ADDITIONAL INFORMATION.
- 11 LOCATE REFRIGERATOR RECEPTACLE ON TIEDOWN BRACKET.
- 10 WIRE CONNECTS TO INVERTER WITH 401
- 9 FLEX CORD PART OF WIRE ASM-CHASSIS.
- 8 NOT USED WITH 1D5
- 7 WIRE IN SIDEWALL
- 6 WIRE ROUTED THROUGH FLOOR AT THIS POINT.
- 5 WIRE PART OF WIRE ASM-110V.
- 4. SEE WIRING DIAGRAM-BODY,110V FOR ADDITIONAL INFORMATION.
- 3. ALL GROUND WIRE TO BE COVERED WITH TUBING 8041-02-000.
- 2. ALL 110V WIRE TO BE CLAMPED WITH CLAMP 10497-05-000 WITHIN 200MM OF OUTLET BOXES, USE SCREW G67-10-12B.
- 1. ALL WIRES TO BE SECURED WITH CLAMP 10495-01-000 OR CLIP 80734-01-000 EVERY 600MM. USE SCREW G67-10-12B UNLESS OTHERWISE SPECIFIED.

- 401 INVERTER-DC/AC, 1000 WATT
- 40A INVERTER-DC/AC WITHOUT
- 1D5 ENTERTAINMENT CENTR/EXT W/CD
- 12D ELECTRICAL SYSTEM 30 AMP
- 265 CODES/STANDARDS-CSA/CMVSS
- 1B1 CODES/STANDARDS USA

1B1	265	12D
FIRST USED		
<b>13 727K</b>		
<b>DO NOT SCALE DRAWING</b>		
<b>TITLE: WIRING INSTL-BODY,110V</b>		
SHEET 3	PART NO	180578 REV

FOR ELECTRICAL TORQUE SPECIFICATIONS SEE DWG NO. 128783-01-000

FOR ELECTRICAL CALLOUTS SEE DWG NO. 121339-01-000

NOTES: