



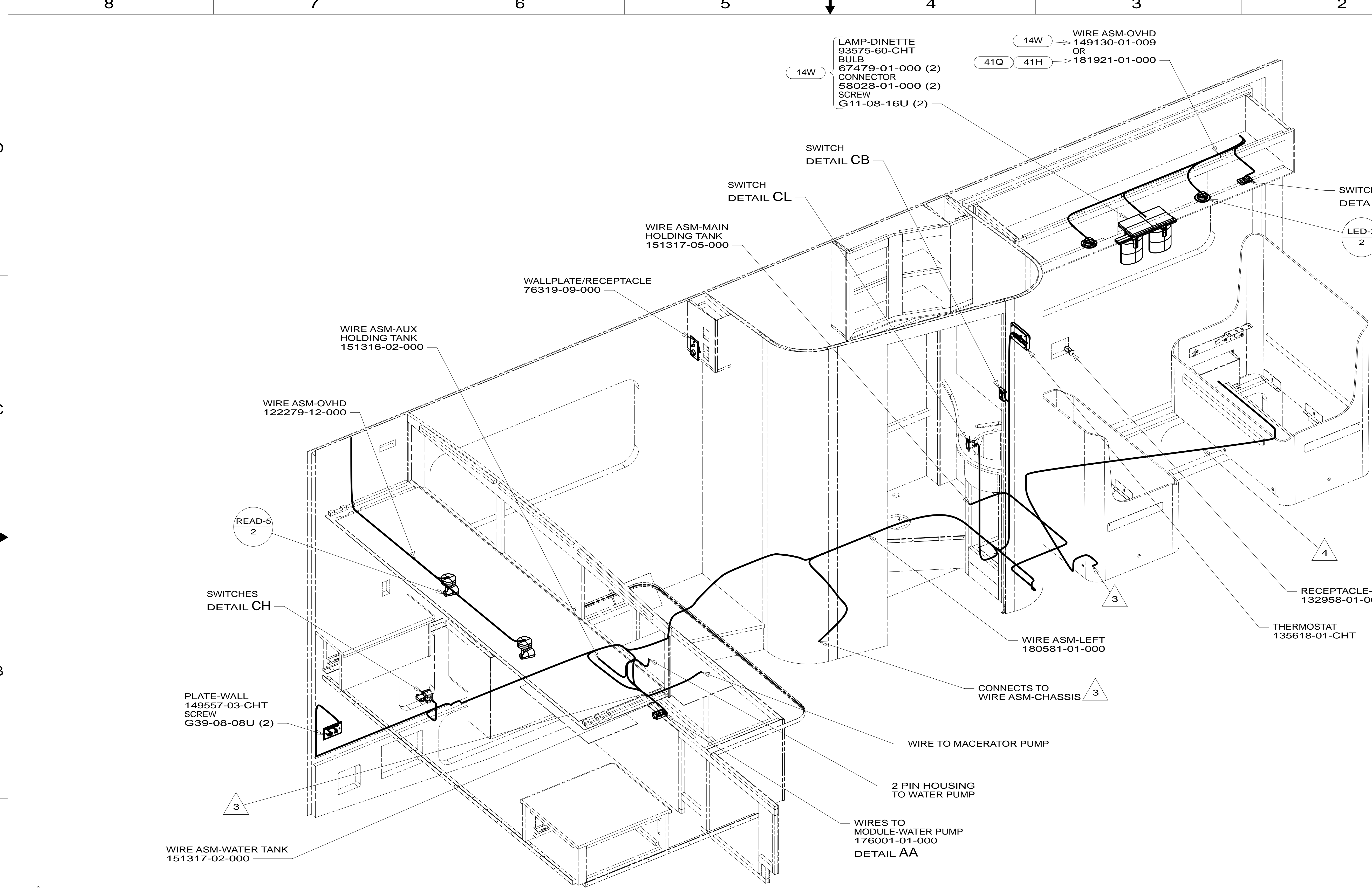
DANGER

Danger of electrical shock, burns or death. Always remove all power sources before attempting any repair, service or diagnostic work. Power can be present from shore power, generator, inverter or battery. All power sources must be disabled and secured before performing any service.



CAUTION

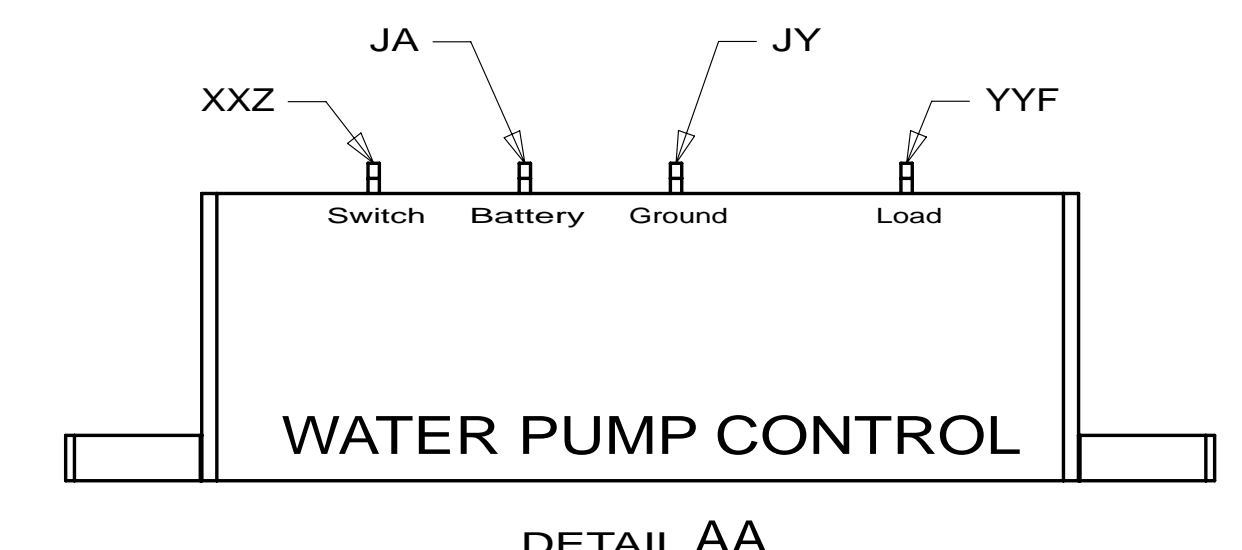
If you lack the skills, tools or equipment to perform diagnostic or repair work leave such work to an authorized Winnebago Industries dealer or other qualified shop.



- 41Q SOFA/SLEEPER-ULTRALEATHER
- 41H REST EASY, ULTRALEATHER
- 14W DINETTE
- 265 CODES/STANDARDS-CSA/CMVSS
- 1B1 CODES/STANDARDS USA

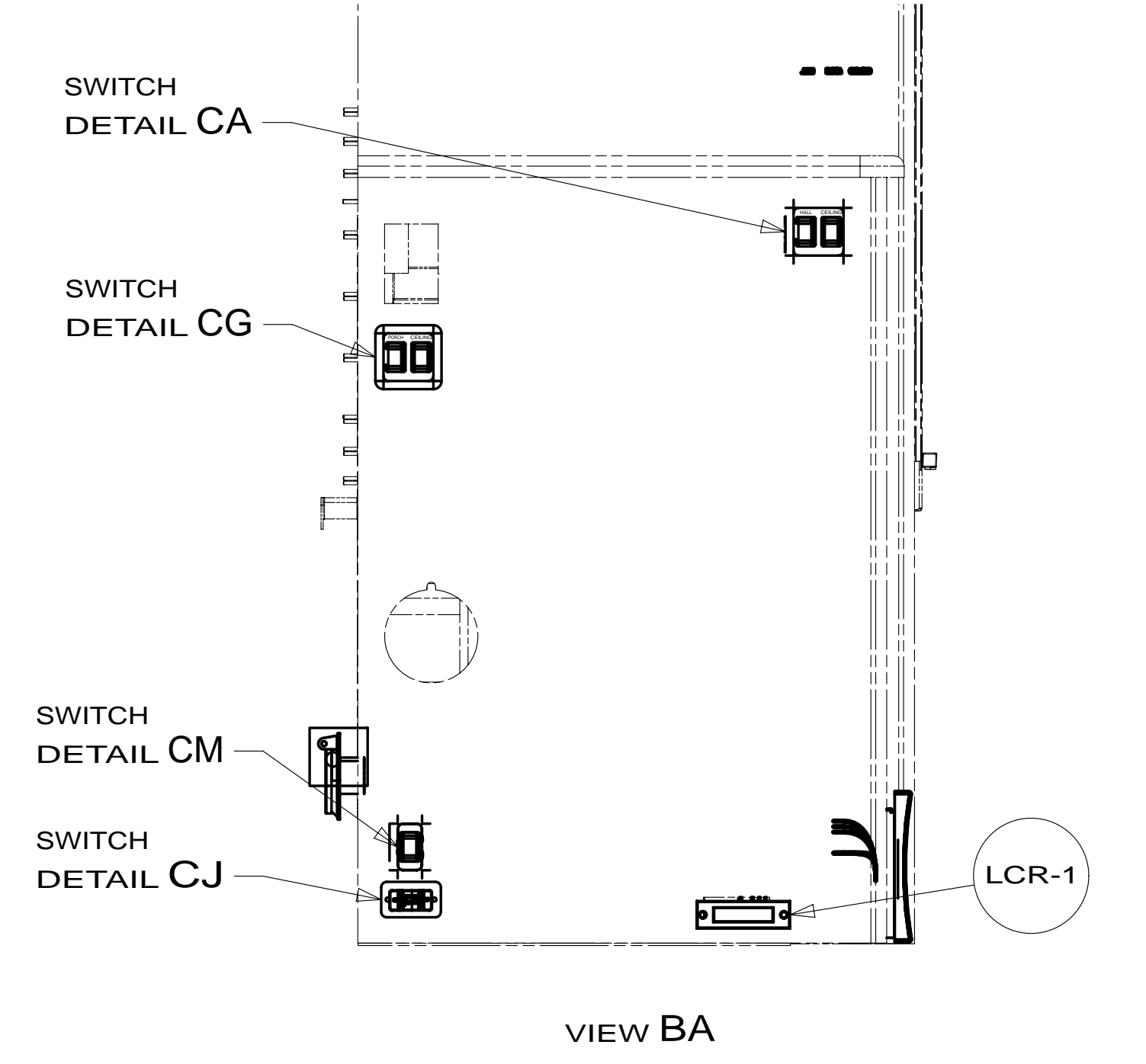
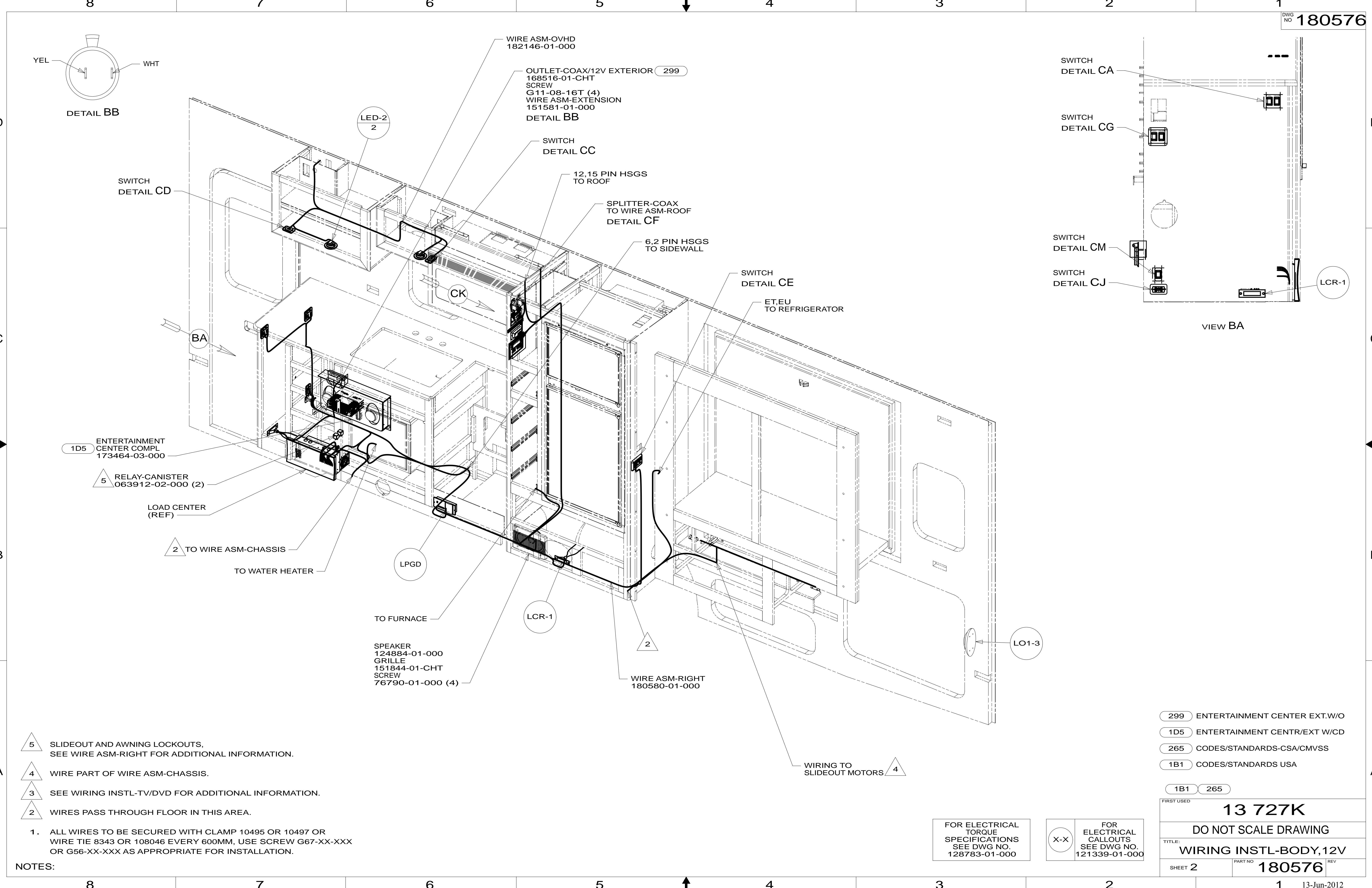
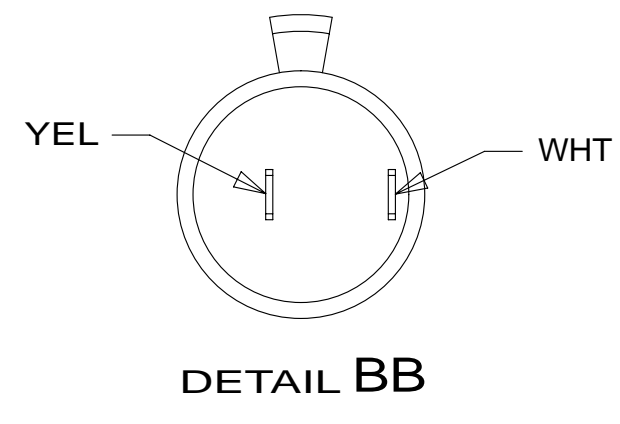
WINNEBAGO		COPYRIGHT 2011 WINNEBAGO INDUSTRIES, INC.	
DFT-ORIG	ORIG. DATE	13 727K	
CHKR			
P.E.	ALL DIMENSIONS ARE IN MILLIMETERS		
M.E.	FIRST USED		
DSNR			
UNSPECIFIED TOLERANCES ARE:		MATERIAL:	
WHOLE DIM (X)	:		
ONE-PLACE (X.X)	:		
TWO-PLACE (X.XX)	:		
ANGLE	:		
THIRD ANGLE PROJECTION			
DO NOT SCALE DRAWING		REFER TO ES0018 FOR FASTENER TIGHTENING GUIDELINES	
TITLE: WIRING INSTL-BODY, 12V			
SHEET 1 OF 5	PART NO	180576	REV

- NOTES:**
1. ALL WIRES TO BE SECURED WITH CLAMP 10495 OR 10497 OR WIRE TIE 8343 OR 108046 EVERY 600MM, USE SCREW G67-XX-XXX OR G56-XX-XXX AS APPROPRIATE FOR INSTALLATION.
 2. ROUTE TANK SENSOR WIRES SO THEY DO NOT PASSOVER SENSORS. USE WIRE TIE MOUNT 155366-01-000 AND WIRE TIE 8343-01-000 AS NEEDED. TANK SURFACE MUST BE CLEANED USING ISOPROPYL ALCOHOL AND PRIME WITH PRIMER 94



FOR ELECTRICAL TORQUE SPECIFICATIONS SEE DWG NO. 128783-01-000

FOR ELECTRICAL CALLOUTS SEE DWG NO. 121339-01-000



- 5 SLIDEOUT AND AWNING LOCKOUTS, SEE WIRE ASM-RIGHT FOR ADDITIONAL INFORMATION.
- 4 WIRE PART OF WIRE ASM-CHASSIS.
- 3 SEE WIRING INSTL-TV/DVD FOR ADDITIONAL INFORMATION.
- 2 WIRES PASS THROUGH FLOOR IN THIS AREA.

1. ALL WIRES TO BE SECURED WITH CLAMP 10495 OR 10497 OR WIRE TIE 8343 OR 108046 EVERY 600MM, USE SCREW G67-XX-XXX OR G56-XX-XXX AS APPROPRIATE FOR INSTALLATION.

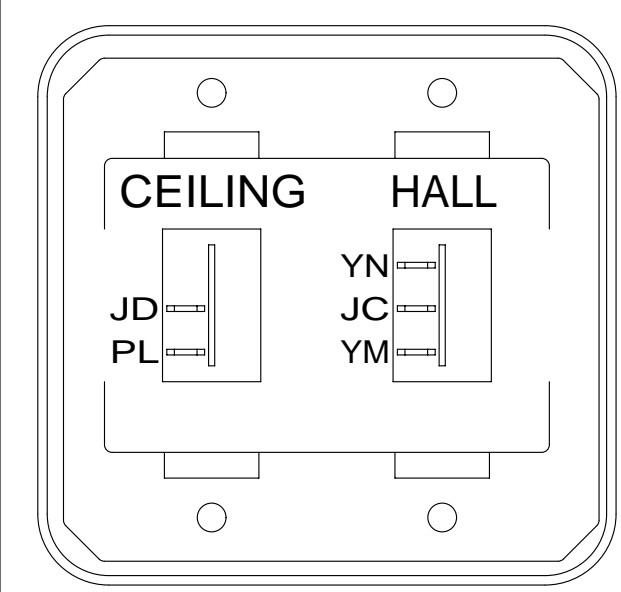
NOTES:

- 299 ENTERTAINMENT CENTER EXT.W/O
- 1D5 ENTERTAINMENT CENTR/EXT W/CD
- 265 CODES/STANDARDS-CSA/CMVSS
- 1B1 CODES/STANDARDS USA

FIRST USED		13 727K	
DO NOT SCALE DRAWING			
WIRING INSTL-BODY,12V			
SHEET 2	PART NO	180576	REV

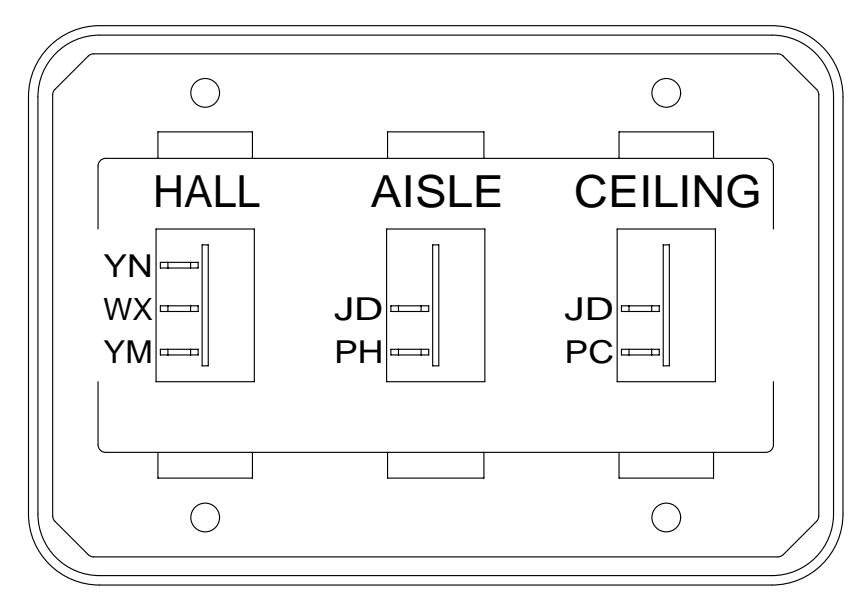
FOR ELECTRICAL TORQUE SPECIFICATIONS SEE DWG NO. 128783-01-000

FOR ELECTRICAL CALLOUTS SEE DWG NO. 121339-01-000



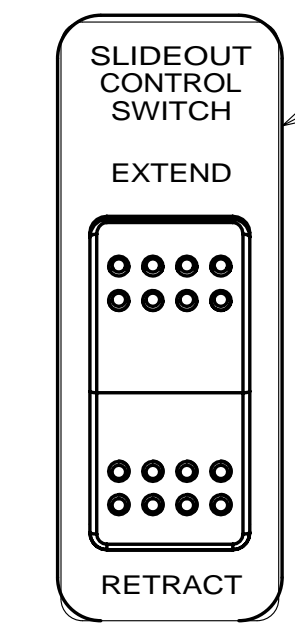
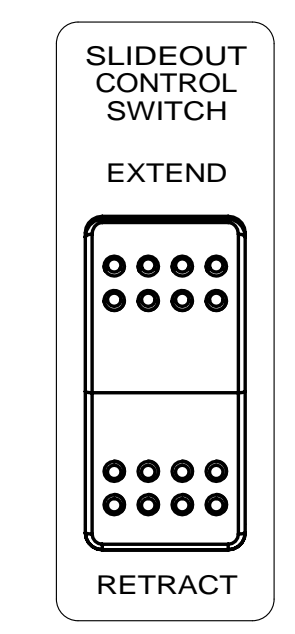
SWITCH-ROCKER
135740-01-CHT
135740-02-CHT
SWITCH-BASE
135741-02-CHT
SWITCH-BEZEL
135742-16-CHT
SCREW
G11-08-08U (4)

DETAIL CA



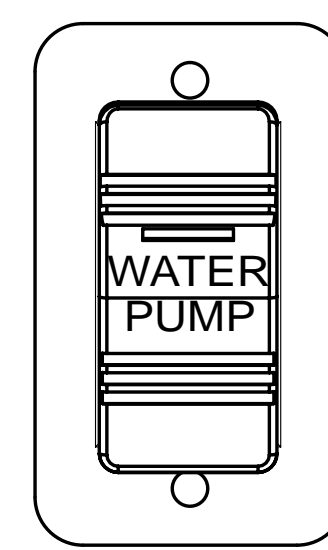
SWITCH-ROCKER
135740-01-CHT (2)
135740-02-CHT
SWITCH-BASE
135741-03-CHT
SWITCH-BEZEL
135742-25-CHT
SCREW
G11-08-08U (4)

DETAIL CE



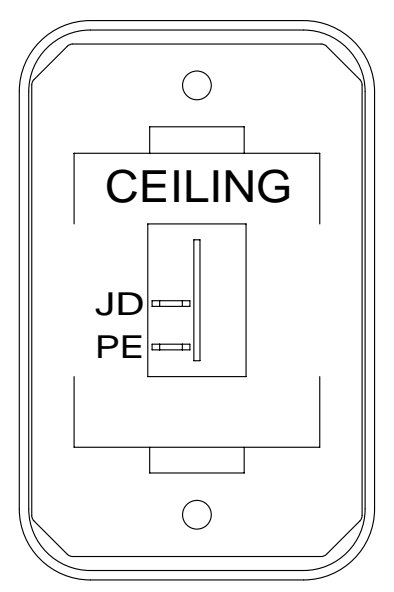
SLIDEOUT CONTROL SWITCH
EXTEND
RETRACT

PLATE-SWITCH
144363-09-CHT (2)
SWITCH
108357-06-000 (2)
ACTUATOR
108356-02-CHT (2)
NUT
D65-08-00B (4)
LABEL
116220-01-000 (2)



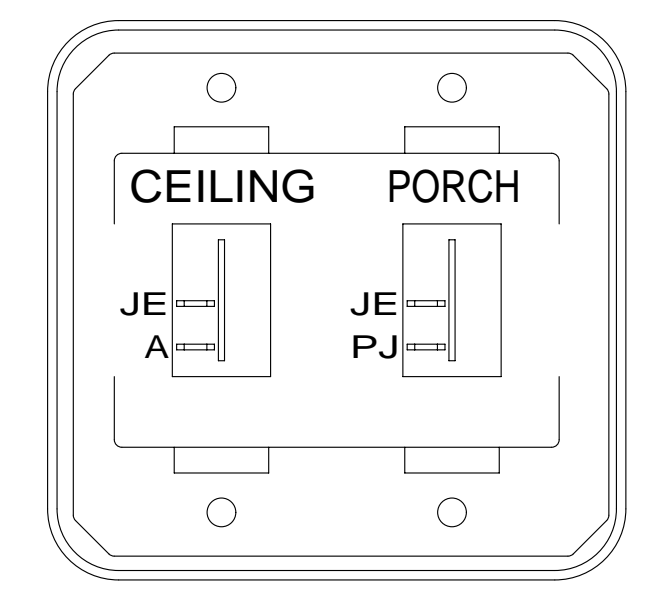
SWITCH-PUMP
108357-21-000
ACTUATOR
108356-23-CHT
PLATE
098351-07-CHT
SCREW
G11-06-10U(2)

DETAIL CL



SWITCH-ROCKER
135740-01-CHT
SWITCH-BASE
135741-01-CHT
SWITCH-BEZEL
135742-07-CHT
SCREW
G11-08-08U (2)

DETAIL CB



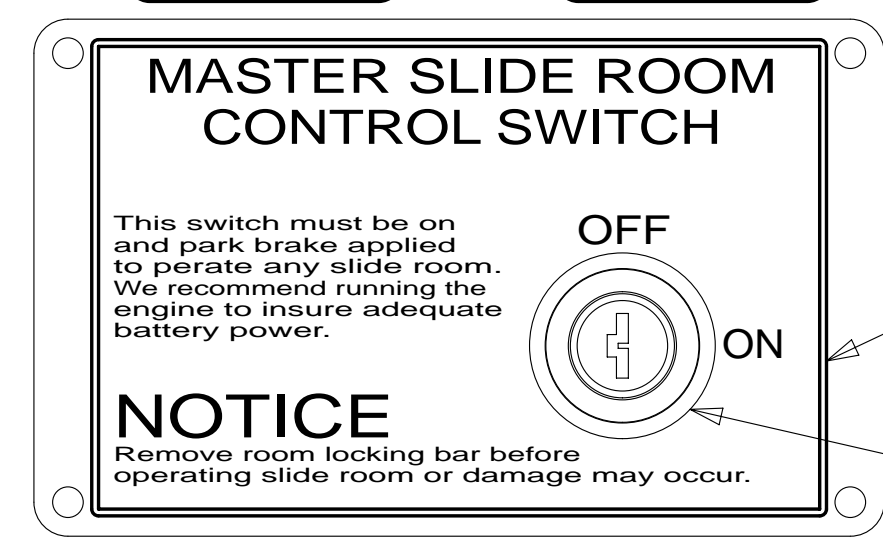
SWITCH-ROCKER
135740-01-CHT (2)
SWITCH-BASE
135741-02-CHT
SWITCH-BEZEL
135742-19-CHT
SCREW
G11-08-08U (4)

DETAIL CG

LABEL-SLIDEOUT,PASS,REAR
163992-03-CHT



LABEL-SLIDEOUT,DRIVER,FRONT
163992-01-CHT



MASTER SLIDE ROOM CONTROL SWITCH

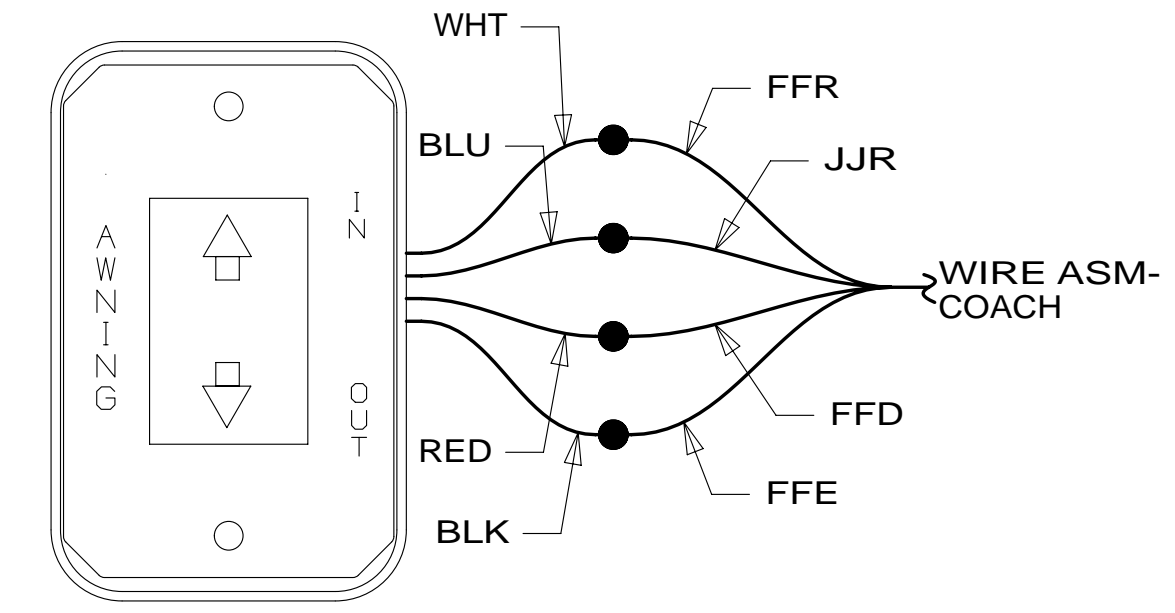
This switch must be on and park brake applied to operate any slide room. We recommend running the engine to insure adequate battery power.

NOTICE
Remove room locking bar before operating slide room or damage may occur.

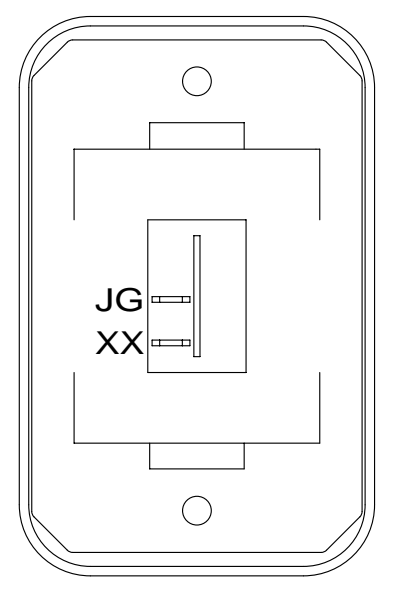
PLATE KEY SLIDEROOM
163987-01-CHT
SCREW
76790-05-000 (4)

LABEL-SLIDEROOM CONTROL
163988-01-CHT

SWITCH-KEYLOCK
163097-01-CHT (CIRCUITS DY,DDJ)



DETAIL CM (SUPPLIED WITH AWNING)



SWITCH-ROCKER
135740-01-CHT
SWITCH-BASE
135741-01-CHT
SWITCH-BEZEL
135742-01-CHT
SCREW
G11-08-08U (2)

DETAIL CC



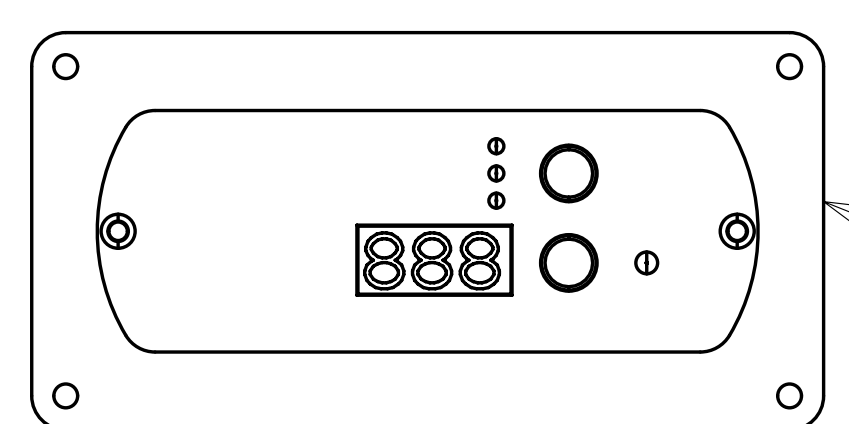
SWITCH-DRAIN PUMP
108357-09-000
ACTUATOR
108356-01-CHT

CIRCUIT BREAKER-20 AMP
93654-03-000
SCREW
G52-06-04B

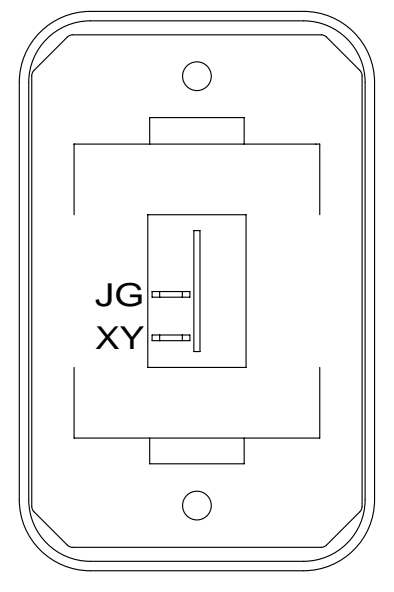
DETAIL CH

WARNING CRUSH HAZARD. Keep people and objects clear of the inside and the outside of the slideout room when operating. Failure to comply could result in death or serious injury.

LABEL-WARNING
116549-01-000



REMOTE PANEL-INVERTER
173337-02-000
MODULE-12V DISC 401
173355-01-000



SWITCH-ROCKER
135740-01-CHT
SWITCH-BASE
135741-01-CHT
SWITCH-BEZEL
135742-01-CHT
SCREW
G11-08-08U (2)

DETAIL CD

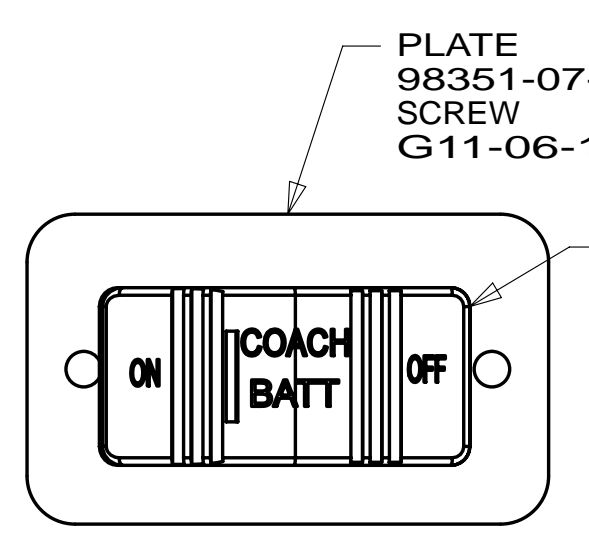
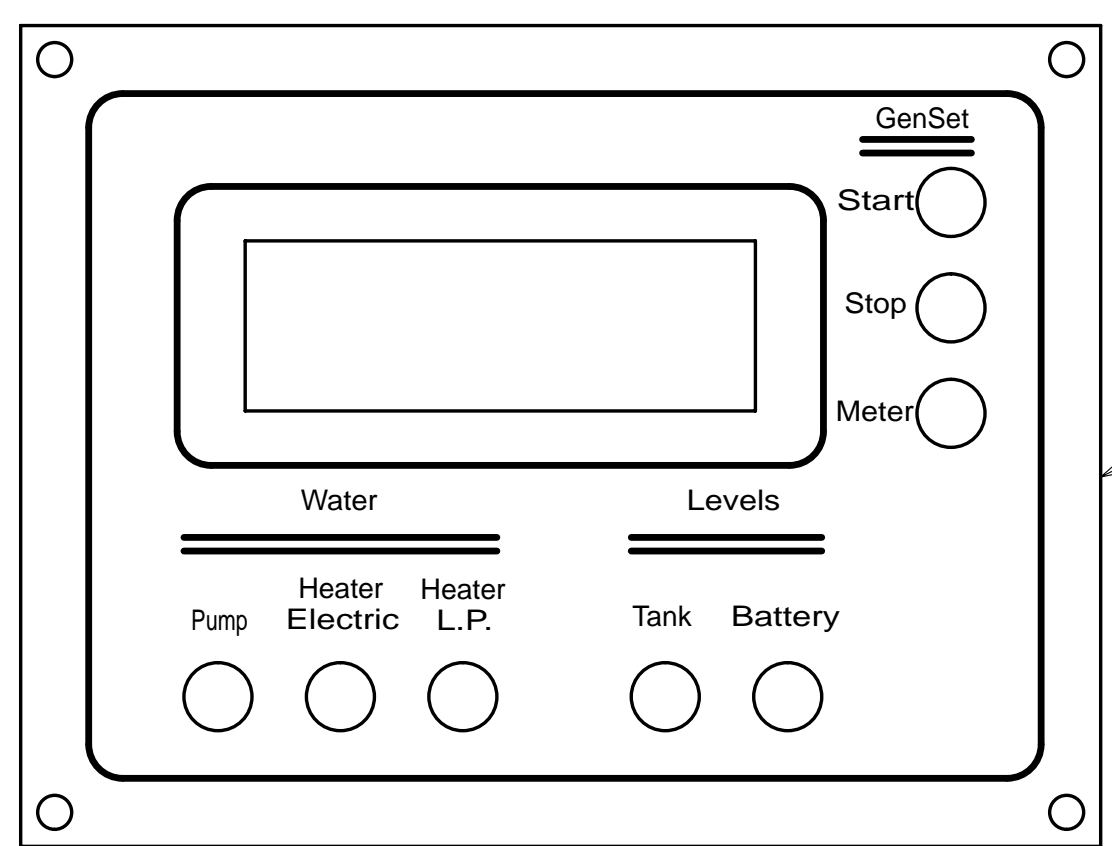


PLATE
98351-07-CHT
SCREW
G11-06-10U (4)

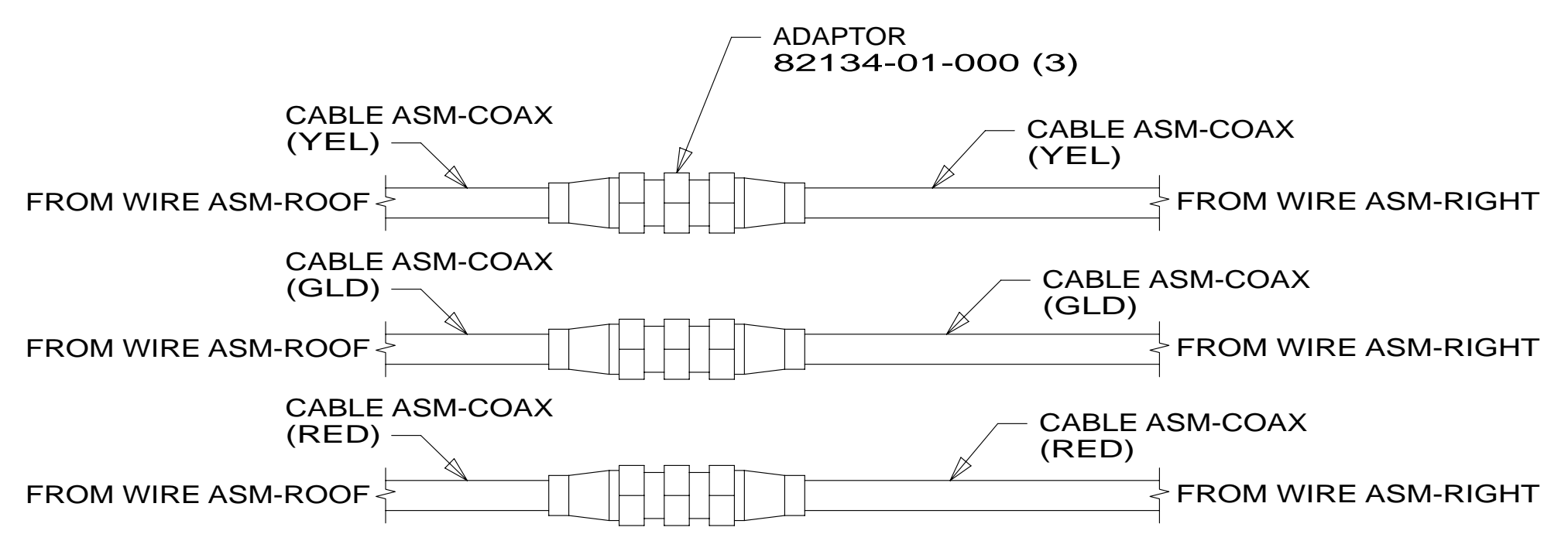
SWITCH-BATTERY
108357-17-000
ACTUATOR
108356-19-CHT
CIRCUITS KF,LG
LJ,LJ,KF,KF,LK

DETAIL CJ



PANEL-MONITOR,LCD
175724-01-000
SCREW
G11-08-12U (4)

VIEW CK



DETAIL CF

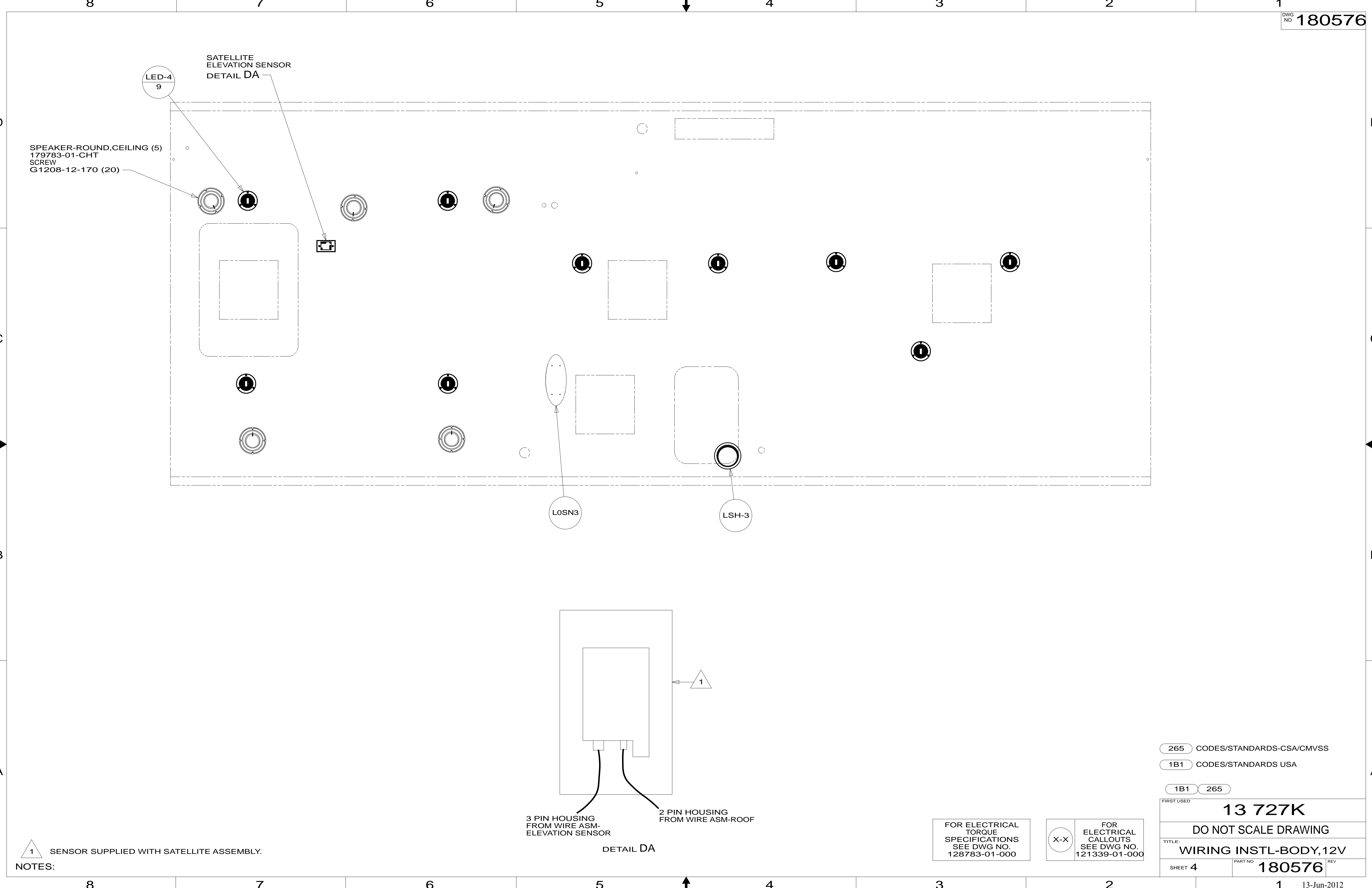
- 41H REST EASY, ULTRALEATHER
- 401 INVERTER-DC/AC, 1000 WATT
- 265 CODES/STANDARDS-CSA/CMVSS
- 1B1 CODES/STANDARDS USA

1B1 265

FIRST USED		13 727K	
DO NOT SCALE DRAWING			
WIRING INSTL-BODY,12V			
SHEET 3	PART NO	180576	REV

FOR ELECTRICAL TORQUE SPECIFICATIONS SEE DWG NO. 128783-01-000

FOR ELECTRICAL CALLOUTS SEE DWG NO. 121339-01-000



SPEAKER-ROUND, CEILING (5)
179783-01-CHT
SCREW
G1208-12-170 (20)

SATELLITE
ELEVATION SENSOR
DETAIL DA

LED-4
9

LOSN3

LSH-3

3 PIN HOUSING
FROM WIRE ASM-
ELEVATION SENSOR

2 PIN HOUSING
FROM WIRE ASM-ROOF

DETAIL DA

1 SENSOR SUPPLIED WITH SATELLITE ASSEMBLY.

NOTES:

FOR ELECTRICAL
TORQUE
SPECIFICATIONS
SEE DWG NO.
128783-01-000

FOR
ELECTRICAL
CALLOUTS
SEE DWG NO.
121339-01-000

265 CODES/STANDARDS-CSA/CMVSS

1B1 CODES/STANDARDS USA

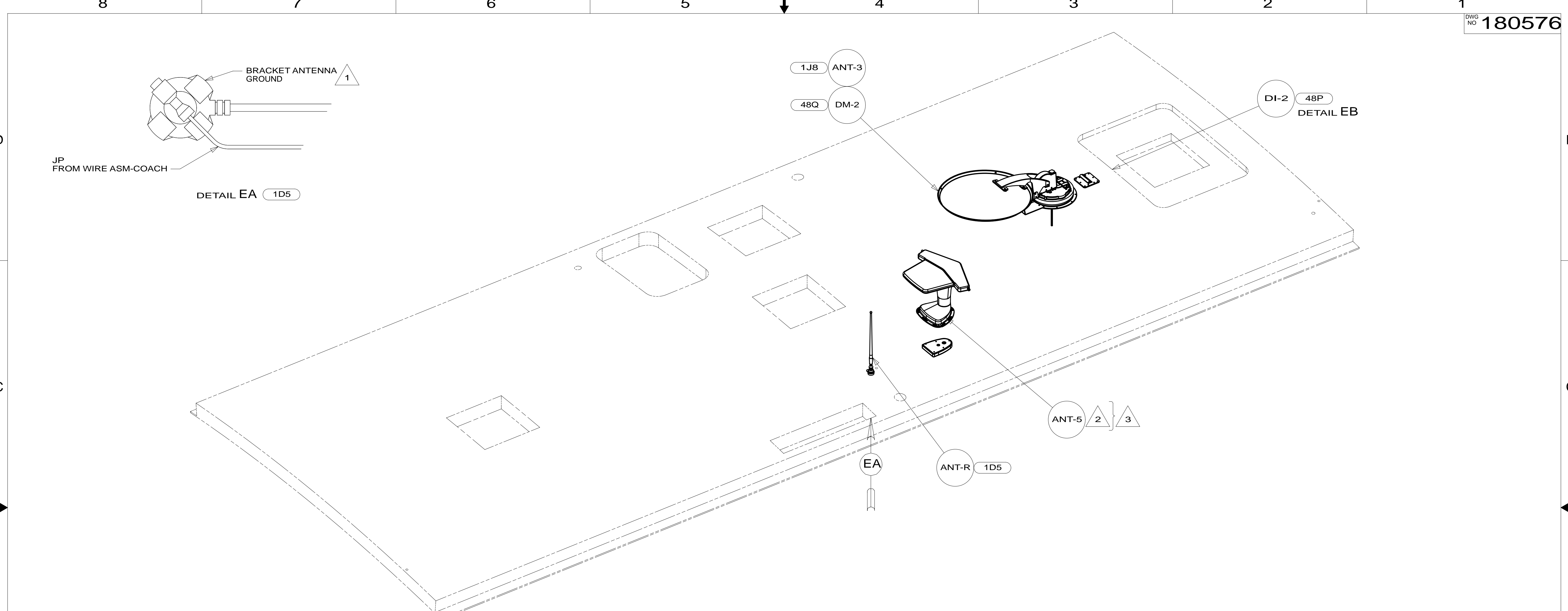
1B1 265

FIRST USED
13 727K

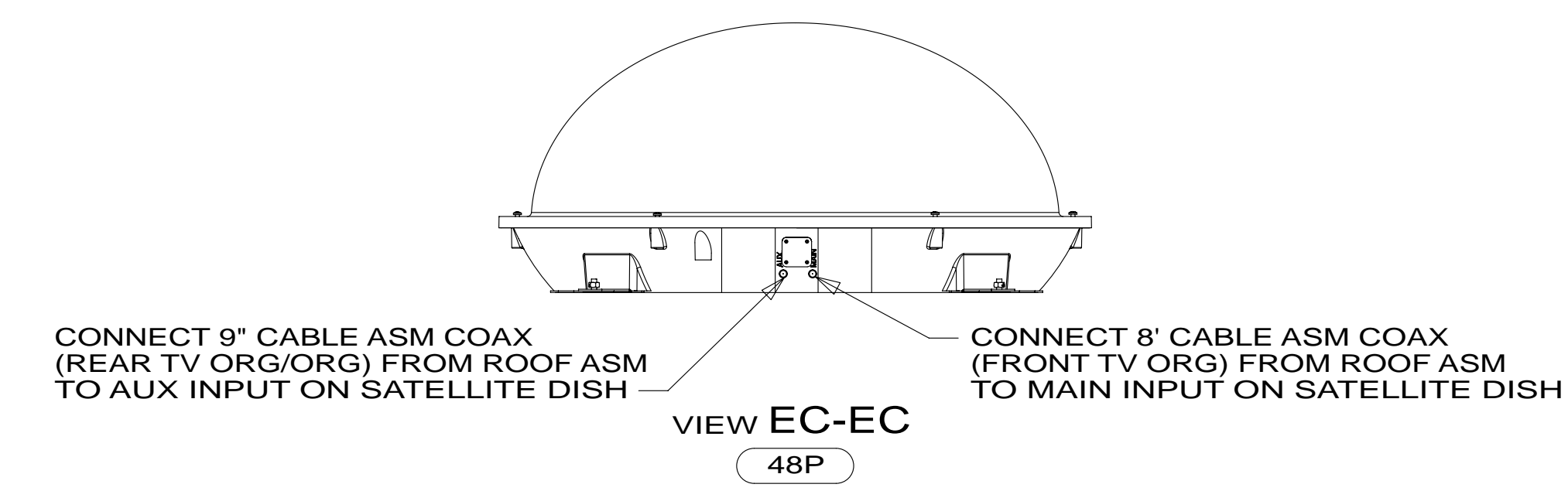
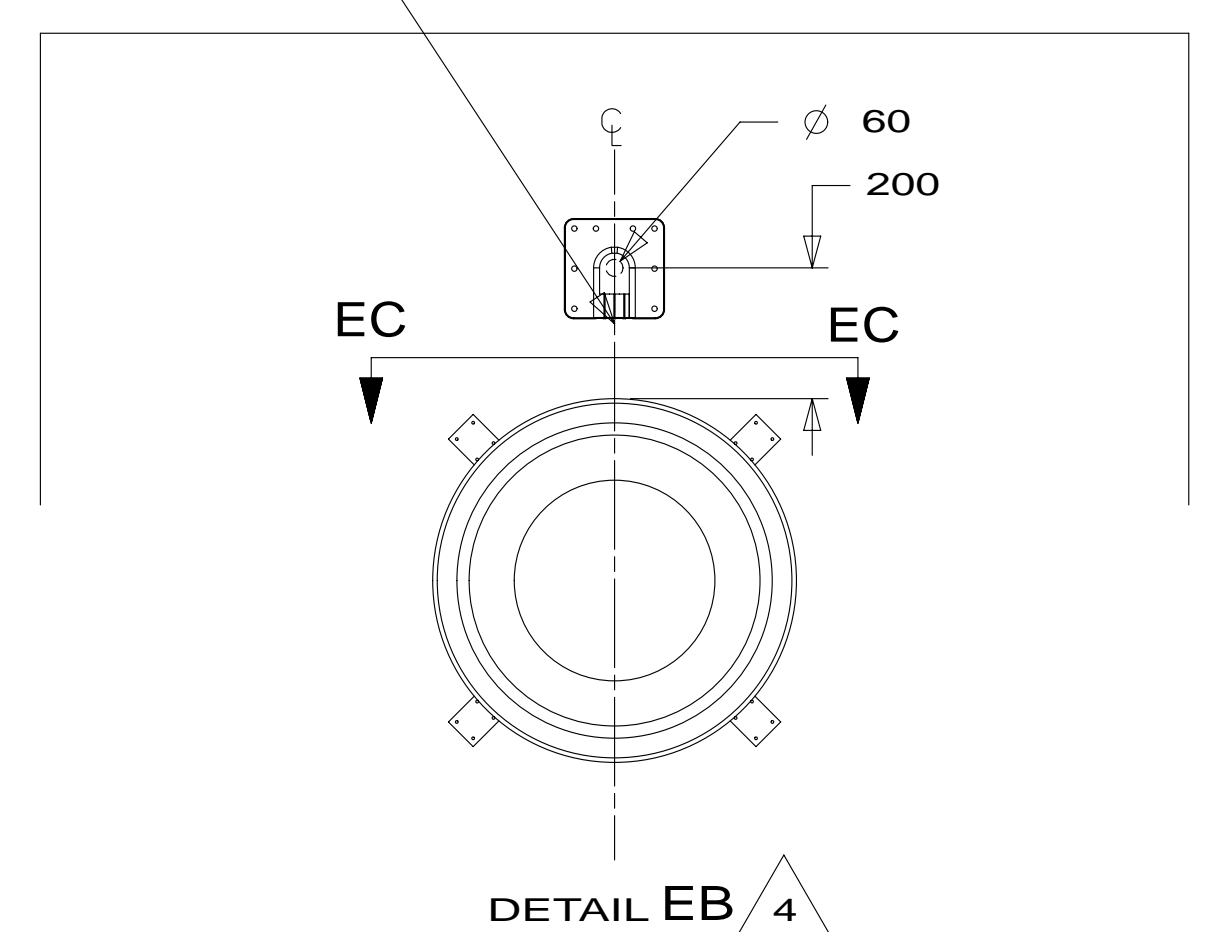
DO NOT SCALE DRAWING

TITLE:
WIRING INSTL-BODY, 12V

SHEET 4 PART NO **180576** REV



THE SATELLITE DISH WIRE CONNECTIONS ARE TO BE PLACED ON THE CENTERLINE OF THE MOTORHOME FACING FORWARD



- NOTES:
- 4 REMOVE ALL SHIPPING RESTRAINTS AND FIRMLY INSERT THE SUPPLIED PLUGS INTO THE APPROPRIATE SIZED HOLES AS SPECIFIED IN THE INSTALLATION PROCESS.
 - 3 NOT USED WITH 1J8
 - 2 SEE ANTENNA INSTALLATION MANUAL FOR CORRECT INSTALLATION PROCEDURE.
 - 1 WRAP BRACKET LEGS AROUND ANTENNA BASE.

- 48P SAT TV SYSTEM IN-MOTION
- 48Q SATELLITE DISH & ELEV.SENSOR
- 1J8 TV ANTENNA-OMNIDIRECTIONAL
- 1D5 ENTERTAINMENT CENTR/EXT W/CD
- 265 CODES/STANDARDS-CSA/CMVSS
- 1B1 CODES/STANDARDS USA

FOR ELECTRICAL TORQUE SPECIFICATIONS SEE DWG NO. 128783-01-000

FOR ELECTRICAL CALLOUTS SEE DWG NO. 121339-01-000

FIRST USED	13 727K	
DO NOT SCALE DRAWING		
TITLE: WIRING INSTL-BODY,12V		
SHEET 5	PART NO 180576	REV