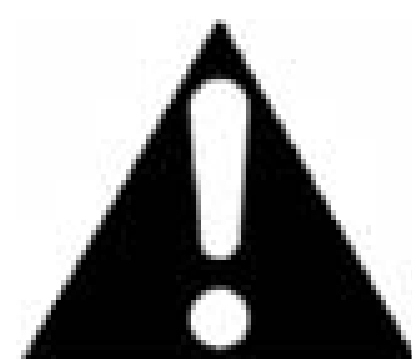




DANGER

Danger of electrical shock, burns or death. Always remove all power sources before attempting any repair, service or diagnostic work. Power can be present from shore power, generator, inverter or battery. All power sources must be disabled and secured before performing any service.

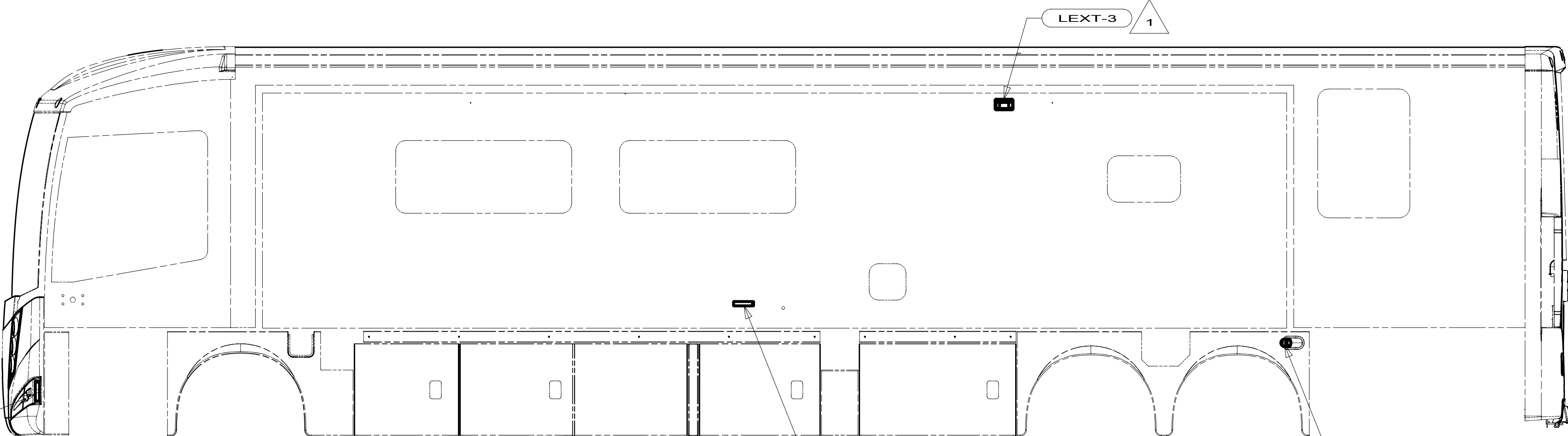


CAUTION

If you lack the skills, tools or equipment to perform diagnostic or repair work leave such work to an authorized Winnebago Industries dealer or other qualified shop.

DRAWING NO.	FEATURES
180572-01	WIN
180572-02	ITA

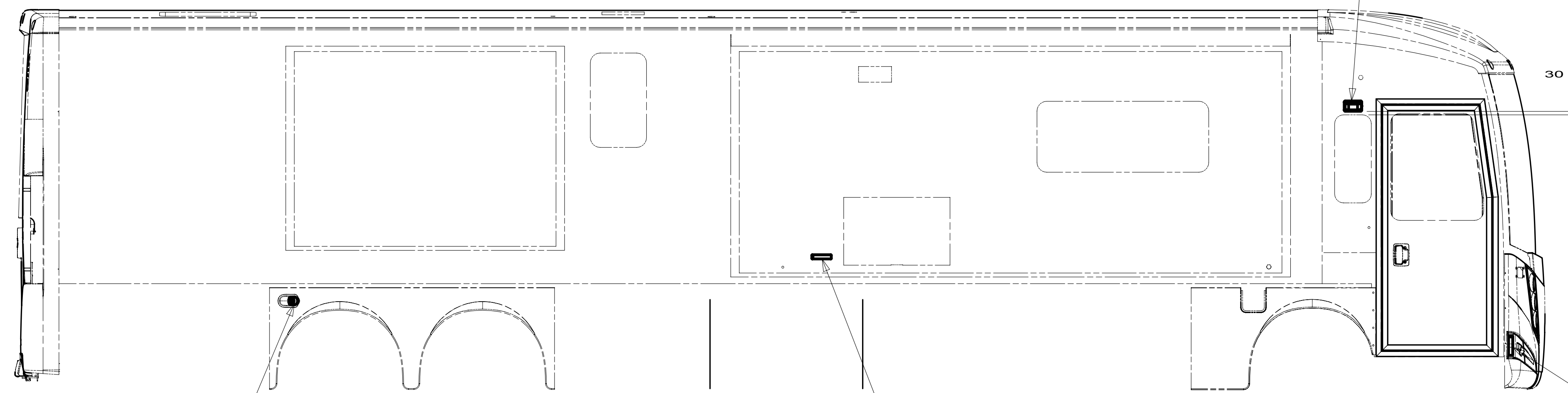
RELEASE	REV DATE	DWG NO	180572
REV ZONE	REVISION RECORD	DATE	DTR-ORIG



WIN 1
 LAMP-MARKER, AMBER
 117826-02-000
 GASKET-MARKER LIGHT
 117826-03-000
 BULB
 36196-01-000
 SCREW
 G11-08-12U (EXT)(2)

LAMP-MARKER, BASE 2
 111102-01-000
 LAMP-MARKER, LENS, AMBER
 111102-02-000
 SCREW
 G11-08-12U (EXT)(2)
 CONNECTOR
 58028-01-000 (4)

LAMP ASM-AUXILLARY
 129746-01-000
 NUT
 40921-05-000 (2)
 SCREW
 G39-08-10U (EXT) (3)
 SHIM-STRIKER
 120494-03-CHT (A/R)



LAMP ASM-AUXILLARY
 129746-01-000
 NUT
 40921-05-000 (2)
 SCREW
 G39-08-10U (EXT) (3)
 SHIM-STRIKER
 120494-03-CHT (A/R)

LAMP-MARKER, BASE 2
 111102-01-000
 LAMP-MARKER, LENS, AMBER
 111102-02-000
 SCREW
 G11-08-12U (EXT)(2)
 CONNECTOR
 58028-01-000 (4)

LAMP-MARKER, AMBER WIN 2
 117826-02-000
 GASKET-MARKER LIGHT
 117826-03-000
 BULB
 36196-01-000
 SCREW
 G11-08-12U (EXT)(2)

- ITA ITASCA ONLY
- WIN WINNEBAGO ONLY
- 265 CODES/STANDARDS-CSA/CMVSS
- 1B1 CODES/STANDARDS USA

1B1 265



DTR	ORIG. DATE
CHR	ALL DIMENSIONS ARE IN MILLIMETERS
P.E.	
M.E.	FIRST USED
DSNR	13 R-SERIES
UNSPECIFIED TOLERANCES ARE:	
WHOLE DIM (X)	: 3
ONE-PLACE (X.X)	: 1.5
TWO-PLACE (X.XX)	: 0.50
ANGLE	: 1°
THIRD ANGLE PROJECTION	
DO NOT SCALE DRAWING	REFER TO ES0018 FOR FASTENER TIGHTENING GUIDELINES
TITLE: WIRING INSTL-EXTERIOR LAMPS	
SHEET 1 OF 3	PART NO 180572 REV

2 REMOVE AND REINSTALL AFTER PAINT.
 1 INSTALL AFTER PAINT.

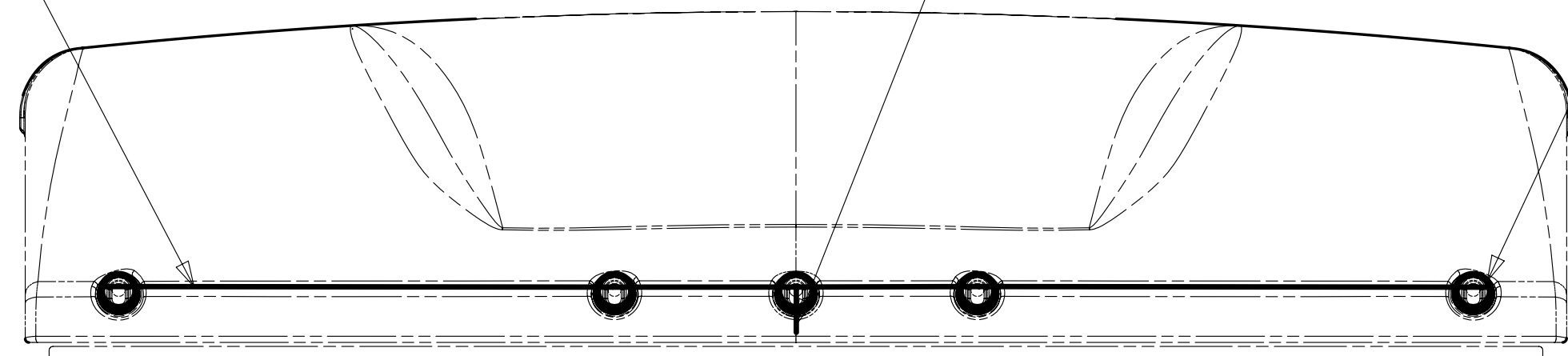
FOR ELECTRICAL TORQUE SPECIFICATIONS SEE DWG NO. 128783-01-000

FOR ELECTRICAL CALLOUTS SEE DWG NO. 121339-01-000

WIRE ASM-CLEARANCE LAMPS
126486-04-000

TO WIRE ASM-IP,MAIN

LAMP ASM-CLEARANCE,AMBER
138996-01-000 (5)
BRACKET-LAMP CLEARANCE
138996-03-000 (5)
SCREW
G39-08-16T (10)



TO WIRE ASM-IP,MAIN

1 HEADLAMP ASM-LOW
146527-01-000 (2)
SCREW
G11-08-06B (8)

2 HEADLAMP ASM-HIGH
146527-02-000 (2)
SCREW
G11-08-06B (8)

HEADLAMP ASM-PARK/TURN
146560-01-000 (2)
BULB
112708-02-000 (2)
NUT
76327-01-000 (6)

TO AIR TANK VALVE

LAMP ASM-FOG
170774-01-000 (2)
BRACKET
176254-01-CHT (2)
SCREW
G18-08-06U (6)
WASHER
E14-08-00U (6)
NUT
D39-04-00U (6)
BOLT
C26-04-08U (8)
NUT
D39-04-00U (8)

WIRE ASM-HEADLAMP,RIGHT
146086-18-000

TO CHASSIS WIRING

WIRE ASM-HEADLAMP,LEFT
146086-17-000

2 THE 2 PIN HOUSING WITH CIRCUITS NB & DDM, FOR THE RIGHT SIDE, AND NB & DDL FOR THE LEFT SIDE IS TO BE PLUGGED INTO THE INBOARD HIGH BEAM HEADLAMP.

1 THE 2 PIN HOUSING WITH CIRCUITS NA & DDM, FOR THE RIGHT SIDE, AND NA & DDL FOR THE LEFT SIDE IS TO BE PLUGGED INTO THE OUTBOARD LOW BEAM HEADLAMP.

NOTES:

265 CODES/STANDARDS-CSA/CMVSS

1B1 CODES/STANDARDS USA

1B1 265

FIRST USED
13 R-SERIES

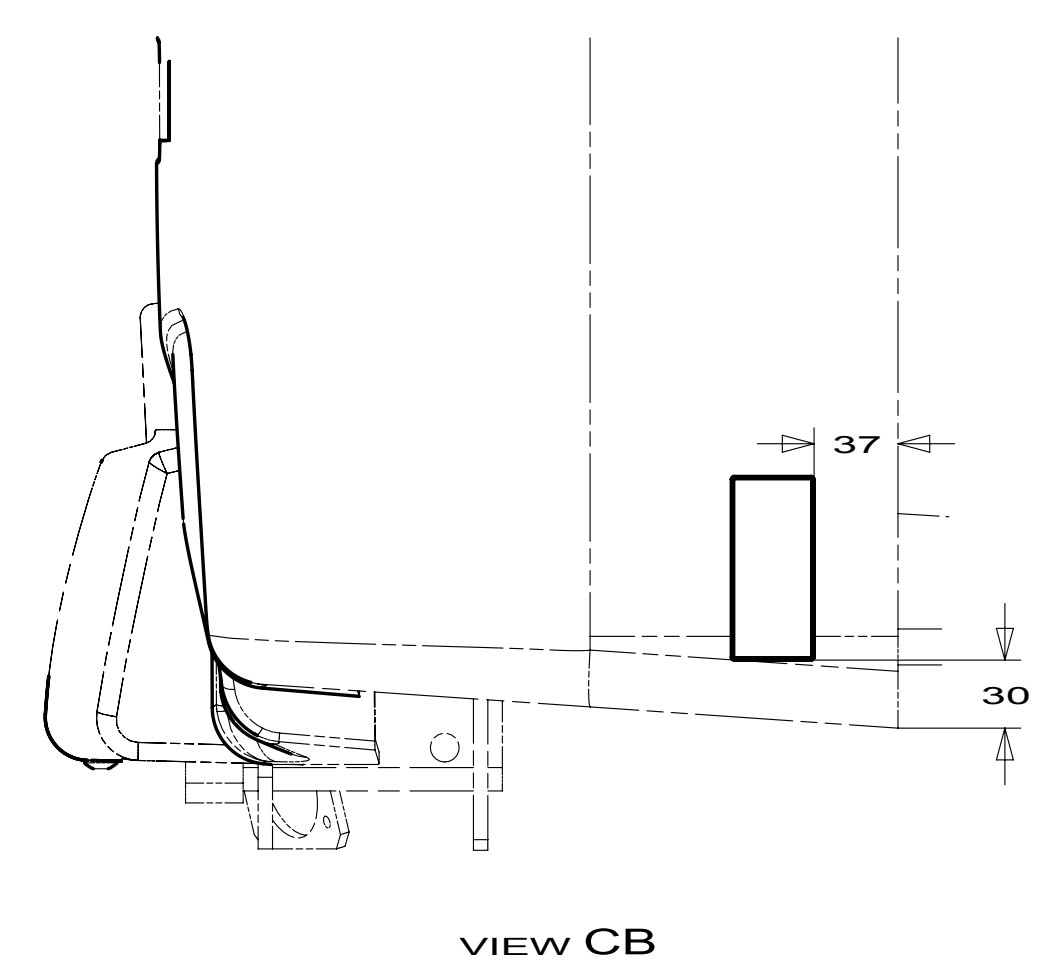
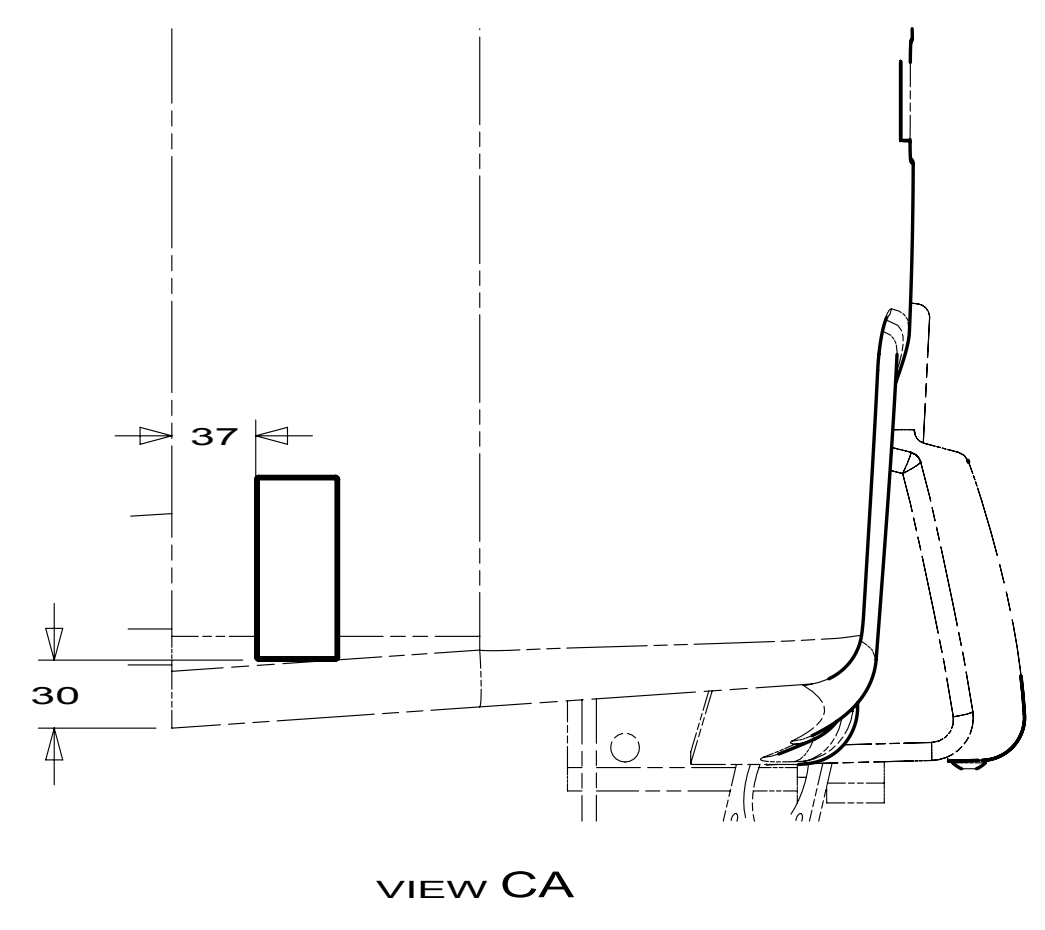
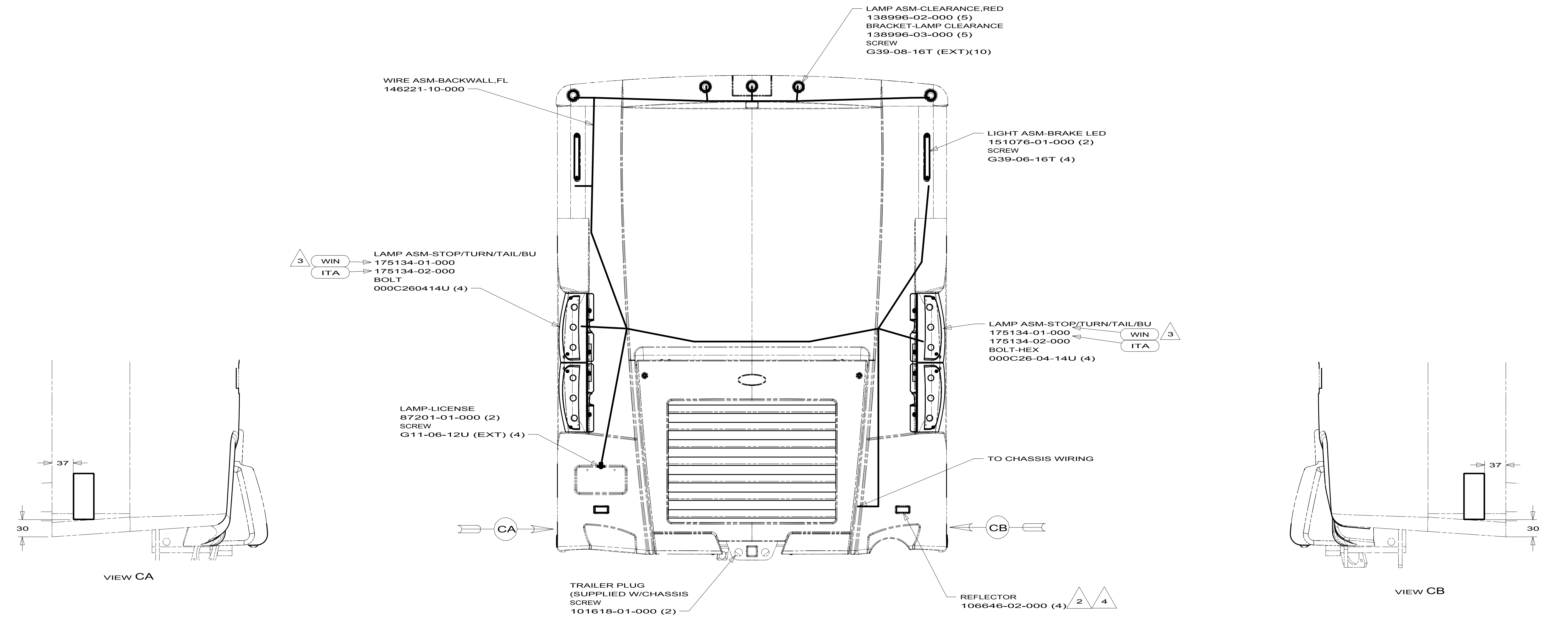
DO NOT SCALE DRAWING

TITLE:
WIRING INSTL-EXTERIOR LAMPS

SHEET 2 PART NO **180572** REV

FOR ELECTRICAL TORQUE SPECIFICATIONS SEE DWG NO. 128783-01-000

FOR ELECTRICAL CALLOUTS SEE DWG NO. 121339-01-000



- NOTES:
- 4 INSTALL AFTER PAINT.
 - 3 ROUT VENT HOSES TOWARD BOTTOM OF LAMP ASSEMBLIES.
 - 2 REMOVE PAPER BACKING FROM REFLECTOR AND PREP APPLICATION SURFACE WITH ISOPROPYL ALCOHOL WIPE BEFORE INSTALLATION.
 - 1 CONNECTOR-PLUG, TRAILER (146246-01-000) TO BE SUPPLIED IN COACH WITH 240

- ITA ITASCA ONLY
- WIN WINNEBAGO ONLY
- 265 CODES/STANDARDS-CSA/CMVSS
- 1B1 CODES/STANDARDS USA

FIRST USED	
13 R-SERIES	
DO NOT SCALE DRAWING	
TITLE: WIRING INSTL-EXTERIOR LAMPS	
SHEET 3	PART NO. 180572 REV

FOR ELECTRICAL TORQUE SPECIFICATIONS SEE DWG NO. 128783-01-000

FOR ELECTRICAL CALLOUTS SEE DWG NO. 121339-01-000