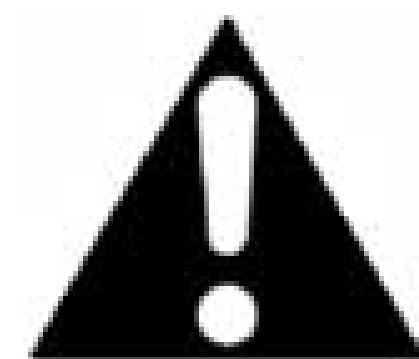




**DANGER**

**Danger of electrical shock, burns or death.** Always remove all power sources before attempting any repair, service or diagnostic work. Power can be present from shore power, generator, inverter or battery. All power sources must be disabled and secured before performing any service.



**CAUTION**

If you lack the skills, tools or equipment to perform diagnostic or repair work leave such work to an authorized Winnebago Industries dealer or other qualified shop.

| DRAWING NO. | UNIT    |
|-------------|---------|
| 180522-01   | 13 224V |
| 180522-02   | 13 226Q |
| 180522-03   | 13 231C |
| 180522-04   | 13 231J |
| 180522-05   | 13 231R |
| 180522-06   | 13 231W |

|                             |     | 224V                | 226Q/226QP          | 231C/231CP          | 231J/231JP          | 231R/231RP          | 231W/231WP          |
|-----------------------------|-----|---------------------|---------------------|---------------------|---------------------|---------------------|---------------------|
| THROW IN WIRE #1            | 1B1 | 136135-09-067 (53B) | 136135-09-015 (53Z) | 136131-03-027 (40B) | 136135-09-040 (53Z) | 136131-05-015 (2)   | 136131-03-030 (1D2) |
|                             | 265 | 136136-09-067 (53B) | 136136-09-015 (53Z) | 136134-03-027 (40B) | 136136-09-040 (53Z) | 136134-05-015 (2)   | 136134-03-030 (1D2) |
| THROW IN WIRE #2            | 1B1 |                     | 136131-03-004 (2)   | 136131-04-027 (40B) | 136131-03-003 (2)   | 136131-03-030       | 136131-03-035       |
|                             | 265 |                     | 136131-03-004 (2)   | 136134-04-027 (40B) | 136134-03-003 (2)   | 136134-03-030       | 136131-03-035       |
| THROW IN WIRE #3            | 1B1 |                     |                     | 136135-09-018 (53Z) | 136131-03-051       | 136135-09-022 (53Z) | 136135-09-010 (53Z) |
|                             | 265 |                     |                     | 136136-09-018 (53Z) | 136134-03-051       | 136136-09-022 (53Z) | 136136-09-010 (53Z) |
| THROW IN WIRE #4            | 1B1 |                     |                     |                     | 136131-03-009 (2)   |                     | 136135-06-005       |
|                             | 265 |                     |                     |                     | 136134-03-009 (2)   |                     | 136136-06-005       |
| MAIN EXTENSION              | 1B1 |                     | 8022-01-000 (3600)  | 8022-01-000 (2200)  | 8022-01-000 (2600)  | 8022-01-000 (4100)  | 8022-01-000 (4000)  |
|                             | 265 |                     | 24743-01-000 (3600) | 24743-01-000 (2200) | 24743-01-000 (2600) | 24743-01-000 (4100) | 24743-01-000 (4000) |
| GENERATOR CABLE ASM         | 1B1 | 8022-01-000 (4400)  | 8022-01-000 (5600)  | 8022-01-000 (2600)  |                     |                     | 8022-01-000 (3200)  |
|                             | 265 | 24743-01-000 (4400) | 24743-01-000 (5600) | 24743-01-000 (2600) |                     |                     | 24743-01-000 (3200) |
| WIRE ASM-110V               | 1B1 | 183082-01-000       | 178916-01-000       | 178431-01-000       | 179411-01-000       | 182574-01-000       | 181380-01-000       |
|                             | 265 | 183082-01-000       | 178916-02-000       | 178431-02-000       | 179411-02-000       | 182574-02-000       | 181380-02-000       |
| WIRE ASM-EXTENSION,110V     | 1B1 |                     |                     |                     |                     |                     | 181672-01-000       |
|                             | 265 |                     |                     |                     |                     |                     | 181672-02-000       |
| MAIN EXTENSION CONDUIT      |     |                     | 91234-01-000 (3200) | 91234-01-000 (1800) | 91234-01-000 (2200) | 91234-01-000 (3700) | 91234-01-000 (3600) |
| GENERATOR CABLE ASM CONDUIT |     | 91234-01-000 (4000) | 91234-01-000 (5200) | 91234-01-000 (2200) |                     |                     | 91234-01-000 (2800) |
| GROUND-MAIN                 |     | 136145-02-019       | 136145-02-022       | 136145-02-030       | 136145-02-021       | 136145-02-024       | 136145-02-016       |
| GROUND-ALS                  |     | 136145-01-019       | 136145-01-022       | 136145-01-022       | 136145-01-021       | 136145-01-024       | 136145-01-019       |

- (1D2) SLIDEOUT ROOM-REAR RIGHTHAND
- (41Q) SOFA/SLEEPER-ULTRALEATHER
- (40B) INVERTER-DC/AC, 300 WATT
- (53Z) WTR HTR-6GAL/110/LP/MTR/AUTO
- (53B) WTR HTR-6GAL ELECTRIC/LP GAS
- (23T) DRAINAGE SYSTEM-HEATED
- (40N) GEN-4.0KW-ONANGAS-MICROQUIET
- (265) CODES/STANDARDS-CSA/CMVSS
- (1B1) CODES/STANDARDS USA

1B1 265

**WINNEBAGO** COPYRIGHT 2011 WINNEBAGO INDUSTRIES, INC.

DFTR ORIG. DATE  
 CHKR  
 P.E.  
 M.E.  
 DSNR

ALL DIMENSIONS ARE IN MILLIMETERS

FIRST USED  
**13 200-SERIES**

UNSPECIFIED TOLERANCES ARE:  
 WHOLE DIM (X) : 3  
 ONE-PLACE (X.X) : 1.5  
 TWO-PLACE (X.XX) : 0.50  
 ANGLE : 1'

THIRD ANGLE PROJECTION

DO NOT SCALE DRAWING REFER TO ES0018 FOR FASTENER TIGHTENING GUIDELINES

TITLE: **LOAD CENTER/ATS ASM**

SHEET 1 OF 3 PART NO **180522** REV

REF: 1 27-Nov-2012

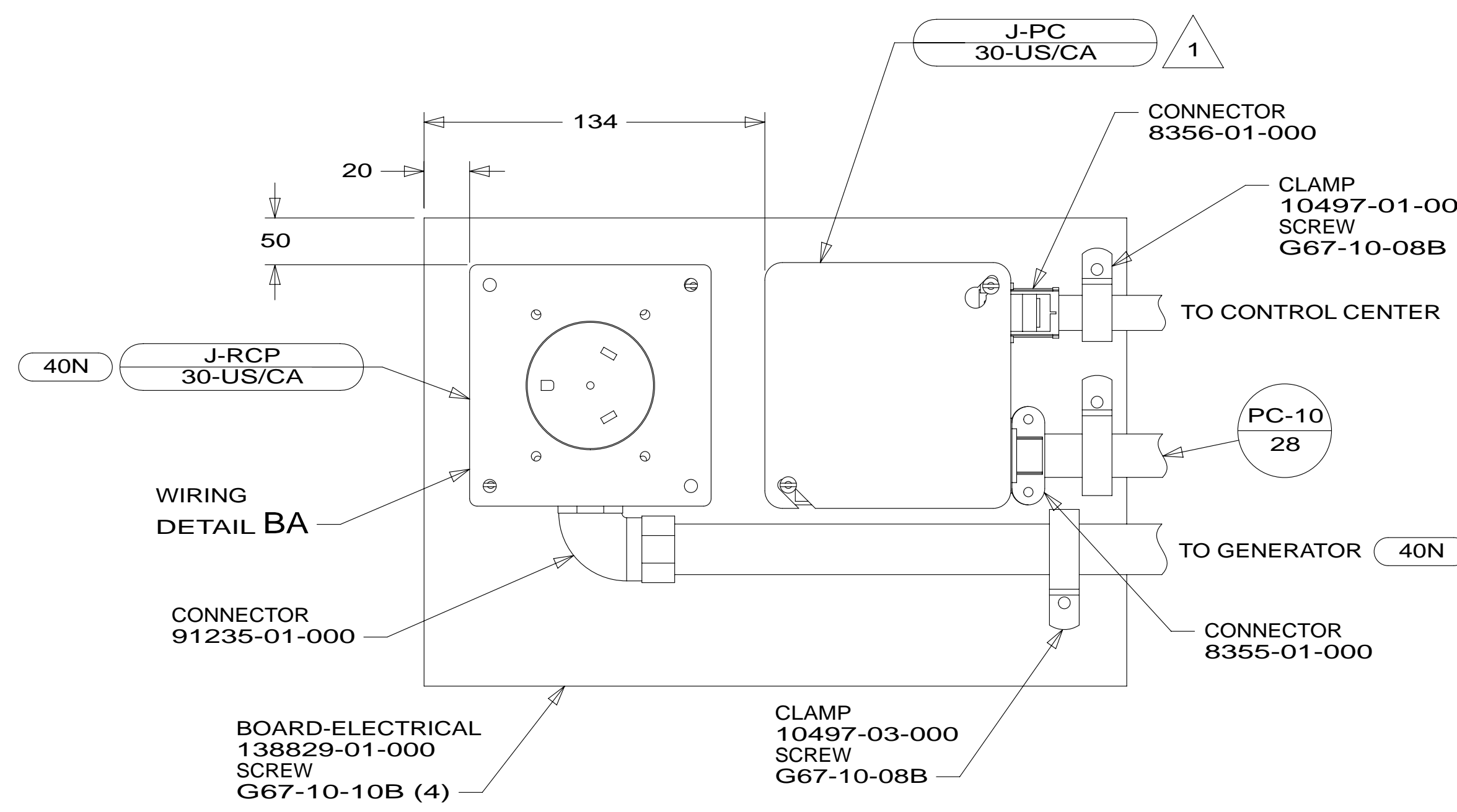
3 FOR CONNECTOR INSTALLATION SEE DETAIL BF.  
 2 FOR CONNECTOR INSTALLATION SEE DETAIL BE.

1. ALL GROUND WIRES TO BE COVERED WITH TUBING 8041-02-000.

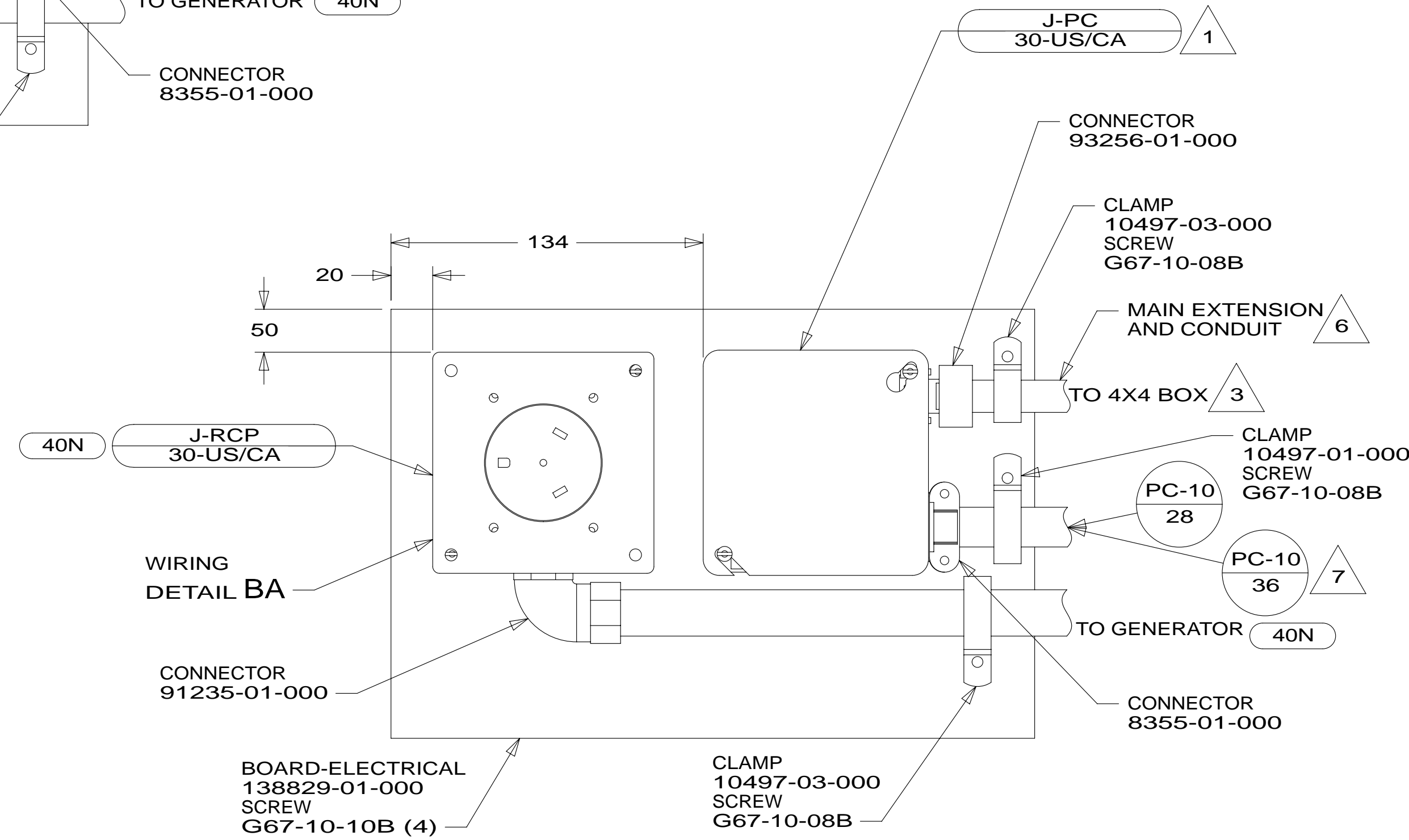
FOR ELECTRICAL TORQUE SPECIFICATIONS SEE DWG NO. 128783-01-000

FOR ELECTRICAL CALLOUTS SEE DWG NO. 121339-01-000

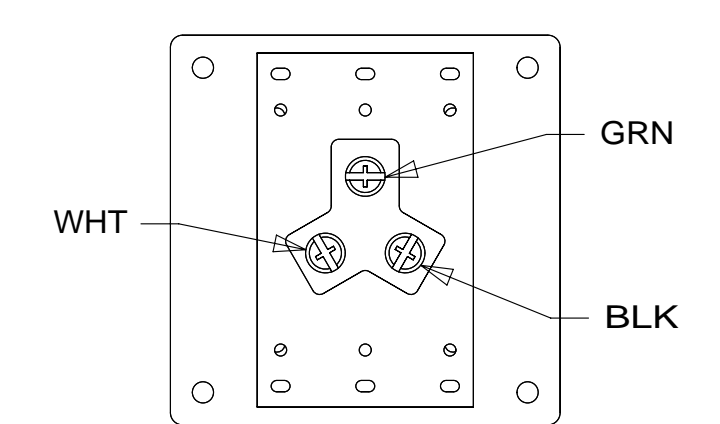
\* 180522 \*



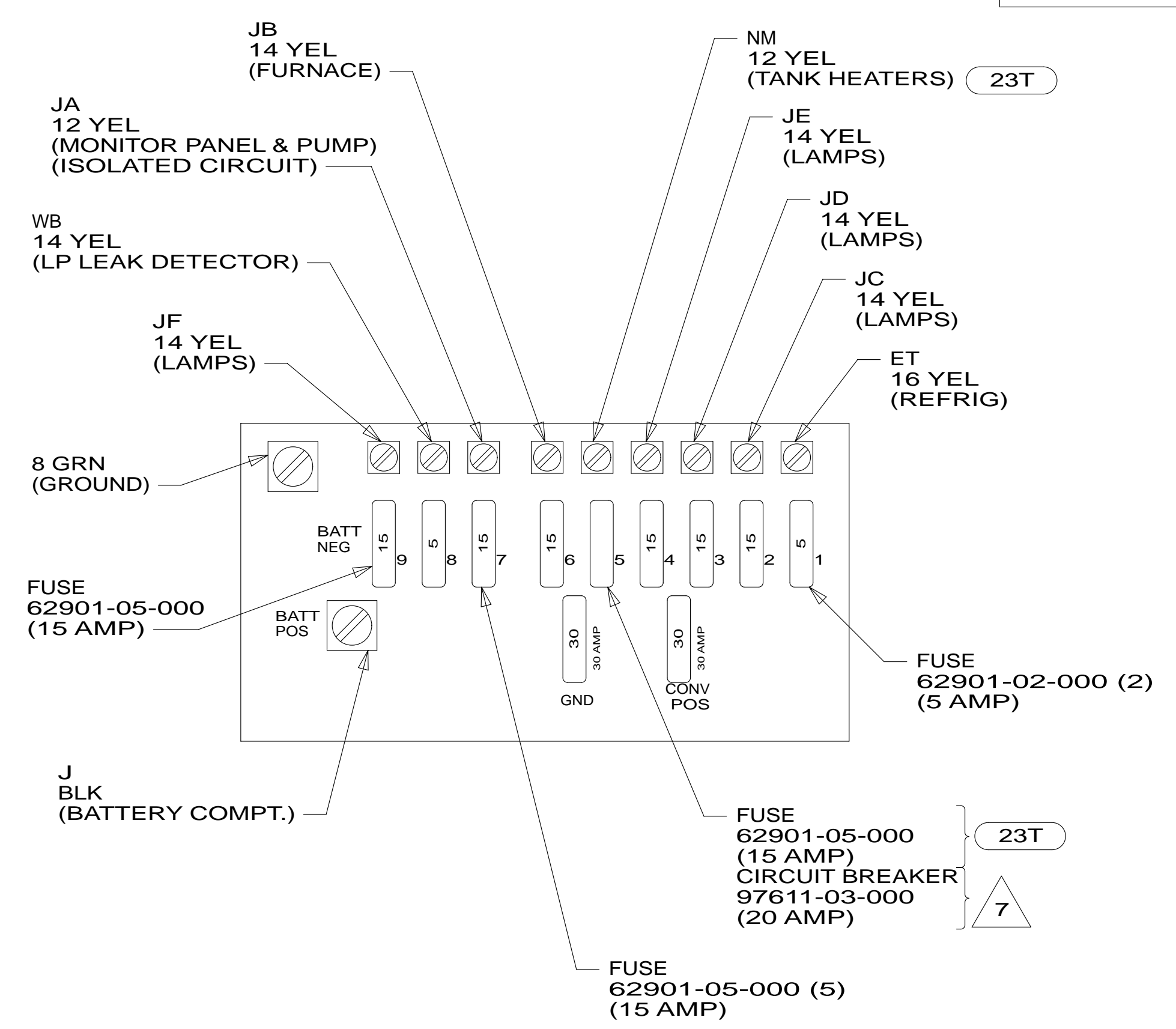
DETAIL BB 2



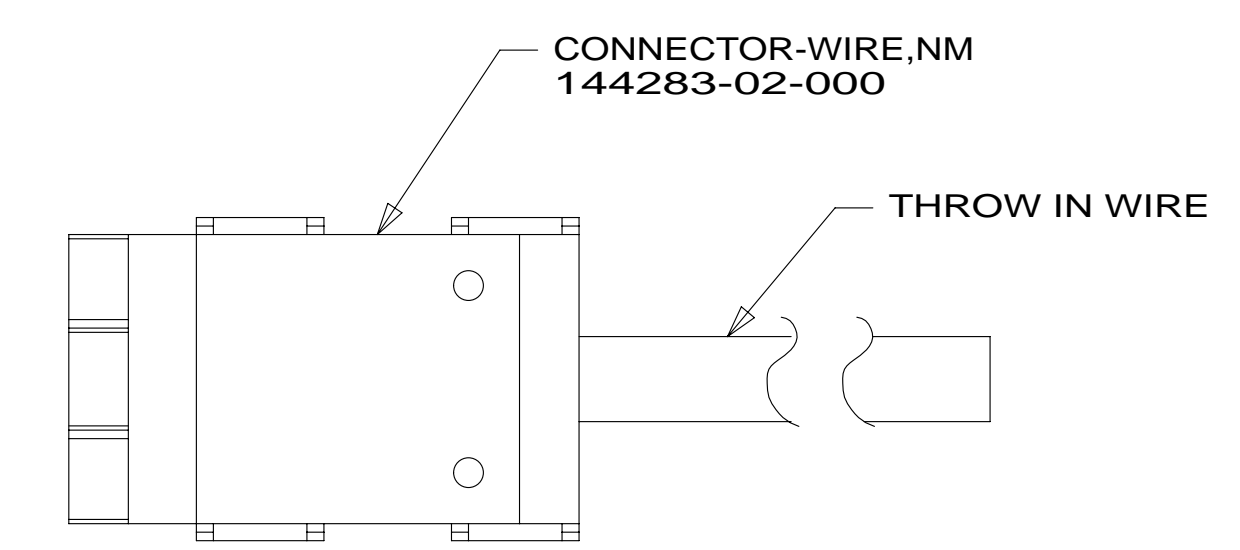
DETAIL BD 4



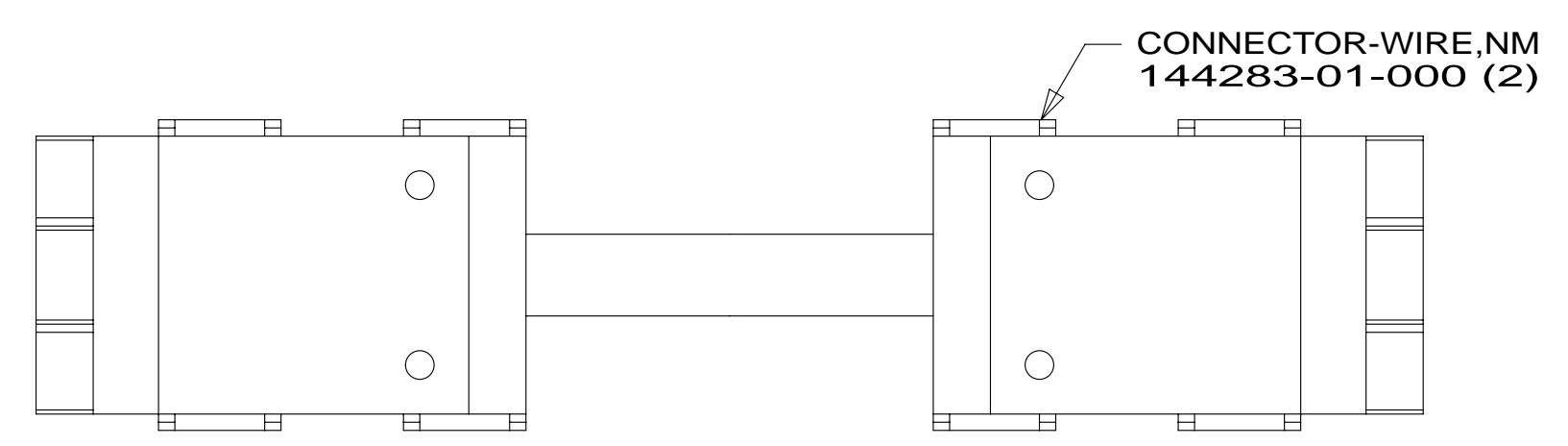
DETAIL BA (BACK VIEW)



DETAIL BC



DETAIL BE



DETAIL BF

- NOTES:
- 7 USED ON THE 226Q AND 226QP ONLY.
  - 6 SEE SHT 1 FOR ADDITIONAL INFORMATION.
  - 5 ALL GROUND WIRES TO BE COVERED WITH TUBING 8041-02-000.
  - 4 USED WITH 226Q, 226QP, 231C, 231CP, 231J, 231JP, 231R, 231RP, 231W, 231WP.
  - 3 SEE WIRING INSTL-BODY, 110V FOR ADDITIONAL INFORMATION.
  - 2 USED WITH 224V.
  - 1 CONNECT BLK TO BLK, WHT TO WHT, AND GRNDS TO GRNDS.

- 23T DRAINAGE SYSTEM-HEATED
- 53Z WTR HTR-6GAL/110/LP/MTR/AUTO
- 53B WTR HTR-6GAL ELECTRIC/LP GAS
- 40N GEN-4.0KW-ONAN-GAS-MICROLITE
- 265 CODES/STANDARDS-CSA/CMVSS
- 1B1 CODES/STANDARDS USA

13 200-SERIES

DO NOT SCALE DRAWING

TITLE: LOAD CENTER/ATS ASM

SHEET 2 PART NO 180522 REV

FOR ELECTRICAL TORQUE SPECIFICATIONS SEE DWG NO. 128783-01-000

FOR ELECTRICAL CALLOUTS SEE DWG NO. 121339-01-000

\* 180522

8 7 6 5 4 3 2 1

D

D

C

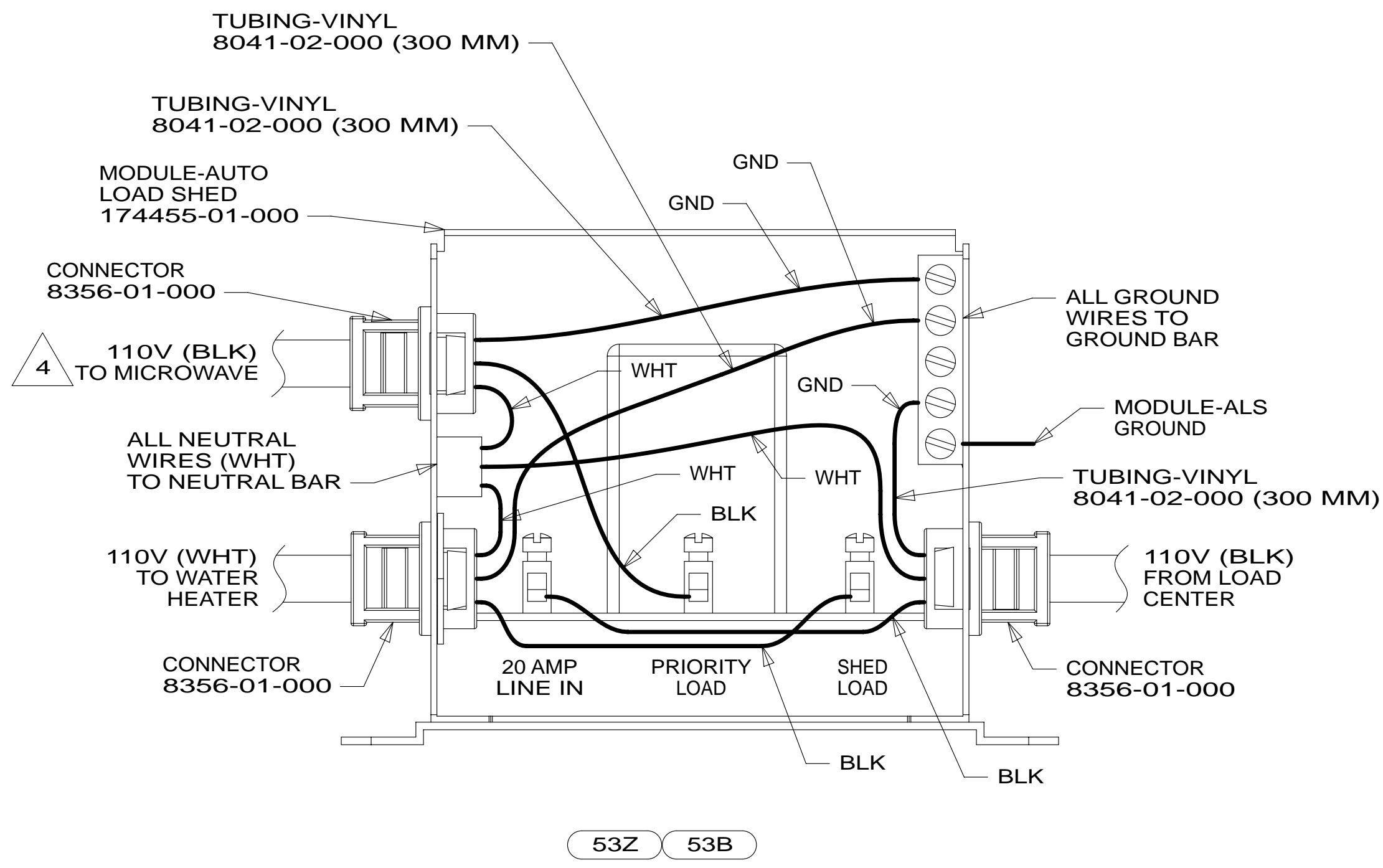
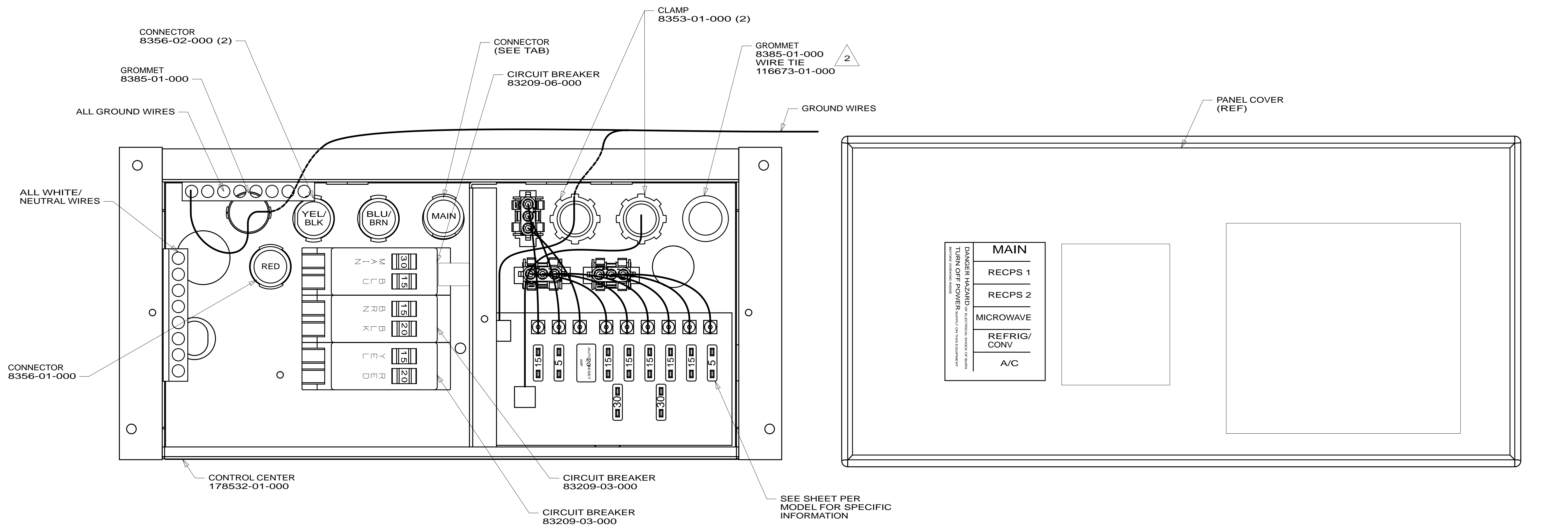
C

B

B

A

A



- 4 SEE WIRING INSTL-BODY, 12V FOR ADDITIONAL INFORMATION.
  - 3 CONNECT CONVERTER POWER INTO YELLOW BREAKER AND USE SUPPLIED WIRE NUT TO CONNECT YELLOW CIRCUIT.
  - 2 INSERT THE GROMMET FROM THE INSIDE OF CONTROL CENTER SECURE WIRES TO BACKSIDE OF LOAD CENTER WITH WIRE TIE.
1. ALL GROUND WIRES TO BE COVERED WITH TUBING 8041-02-000.

NOTES:

- 53B WTR HTR-6GAL ELECTRICAL/LP GAS
- 53Z WTR HTR-6GAL/110/LP/MTR/AUTO
- 265 CODES/STANDARDS-CSA/CMVSS
- 1B1 CODES/STANDARDS USA

1B1 265

FIRST USED

**13 200-SERIES**

DO NOT SCALE DRAWING

TITLE: **LOAD CENTER/ATS ASM**

SHEET 3 PART NO **180522** REV

FOR ELECTRICAL TORQUE SPECIFICATIONS SEE DWG NO. 128783-01-000

FOR ELECTRICAL CALLOUTS SEE DWG NO. 121339-01-000

\* 180522

8 7 6 5 4 3 2 1 27-Nov-2012