



DANGER

Danger of electrical shock, burns or death. Always remove all power sources before attempting any repair, service or diagnostic work. Power can be present from shore power, generator, inverter or battery. All power sources must be disabled and secured before performing any service.



CAUTION


If you lack the skills, tools or equipment to perform diagnostic or repair work leave such work to an authorized Winnebago Industries dealer or other qualified shop.

DRAWING NO.	FEATURES	SHEETS
180520-01	22W	1,2
180520-02	644	1,3

RELEASE	REV DATE A	DWG NO 180520
REV ZONE	REVISION RECORD	DATE DFR-ORIG

		224V	226Q/226QP	231C/231CP	231J/231JP	231R/231RP	231W/231WP
CABLE ASM-STARTER (RED)	164 16Y	141415-34-055	141415-34-054	141415-34-052	141415-34-046	141415-34-048	141415-34-053
CABLE ASM-COACH BATTERY (YEL)	164 16Y	141415-52-027	141415-52-043	141415-52-035	141415-52-048	141415-52-035	141415-52-034
CABLE ASM-COACH BATTERY GND (BLK)	164 16Y	133566-12-015	133566-12-015	133566-12-015	133566-12-015	133566-12-015	133566-12-015
CABLE ASM-GENERATOR (GRN)	164 16Y	141415-42-034	141415-42-058	141415-42-066	141415-42-032	141415-42-026	141415-42-066
CABLE ASM-GENERATOR GND (BLK)	164 16Y	133566-12-008	133566-12-008	133566-12-008	133566-12-008	133566-12-008	133566-12-011

- 644 GREAT ALASKAN RENTAL PACKAGE
- 22W BATTERY-SECOND
- 16Y FORD CHASSIS - 14,500#
- 164 FORD CHASSIS-12,500# GVWR
- 265 CODES/STANDARDS-CSA/CMVSS
- 1B1 CODES/STANDARDS USA

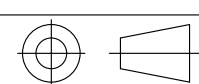


COPYRIGHT 2013
WINNEBAGO
INDUSTRIES, INC.

DFTR	ORIG. DATE
CHKR	ALL DIMENSIONS ARE IN MILLIMETERS
P.E.	
M.E.	FIRST USED
DSNR	13 200-SERIES

UNSPECIFIED TOLERANCES ARE:

WHOLE DIM (X) :	MATERIAL:
ONE-PLACE (X.X) :	
TWO-PLACE (X.XX) :	
ANGLE :	

THIRD ANGLE PROJECTION 

DO NOT SCALE DRAWING REFER TO ES0018 FOR FASTENER TIGHTENING GUIDELINES

TITLE: **BATTERY INSTL**

SHEET 1 OF 3 PART NO **180520** REV

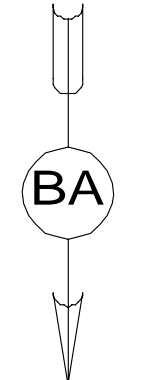
REF: 1 16-Apr-2013

FOR ELECTRICAL TORQUE SPECIFICATIONS SEE DWG NO. 128783-01-000

FOR ELECTRICAL CALLOUTS SEE DWG NO. 121339-01-000

* 180520 * A

BATTERY
 63739-03-000 (2)
 TIE DOWN
 160014-04-CHT
 BOLT
 51387-06-000 (3)
 NUT
 D39-05-00B (3)
 WASHER-RUBBER
 184541-01-CHT (3)



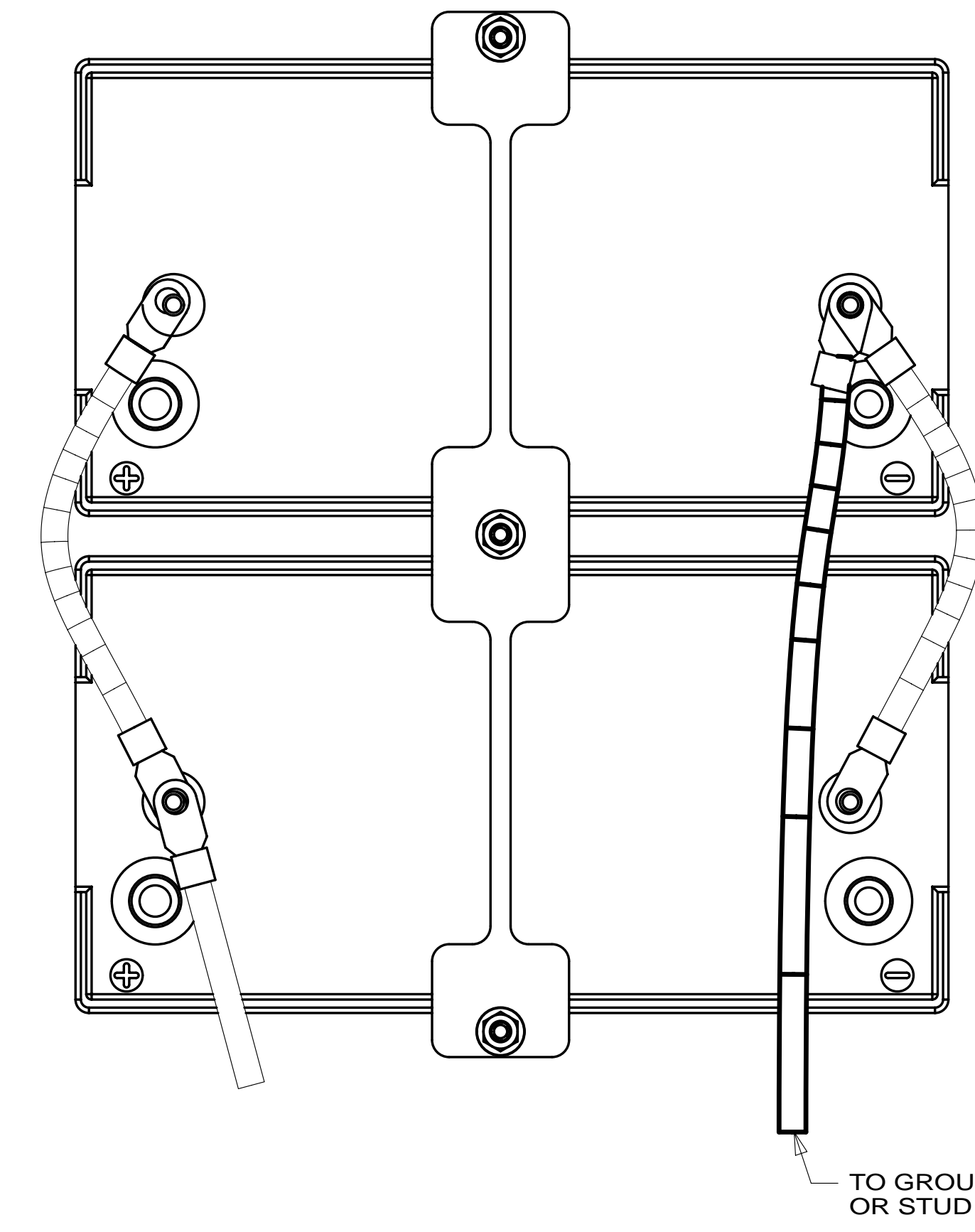
2 CABLE ASM-
 JUMPER POSITIVE
 133566-01-002
 (RED)

2 3 CABLE ASM-
 COACH BATTERY
 (YEL)

CABLE ASM-
 JUMPER NEGATIVE
 133566-11-002
 (BLK) 2

CABLE ASM-COACH
 BATTERY GND
 (BLK) 2 3

BATTERY BOX



VIEW BA 2 3

- NOTES:
- 3 THE POSITIVE AND NEGATIVE BATTERY CABLES ARE TO BE TERMINATED ON OPPOSITE BATTERIES.
 - 2 BATTERY CABLES ARE NOT TO BE ROUTED OVER BATTERY FILL CAPS.
 - 1. SEE WIRING INSTL-CHASSIS FOR ADDITIONAL INFORMATION.

22W BATTERY-SECOND
 265 CODES/STANDARDS-CSA/CMVSS
 1B1 CODES/STANDARDS USA

1B1 265 22W

FIRST USED
13 200-SERIES

DO NOT SCALE DRAWING

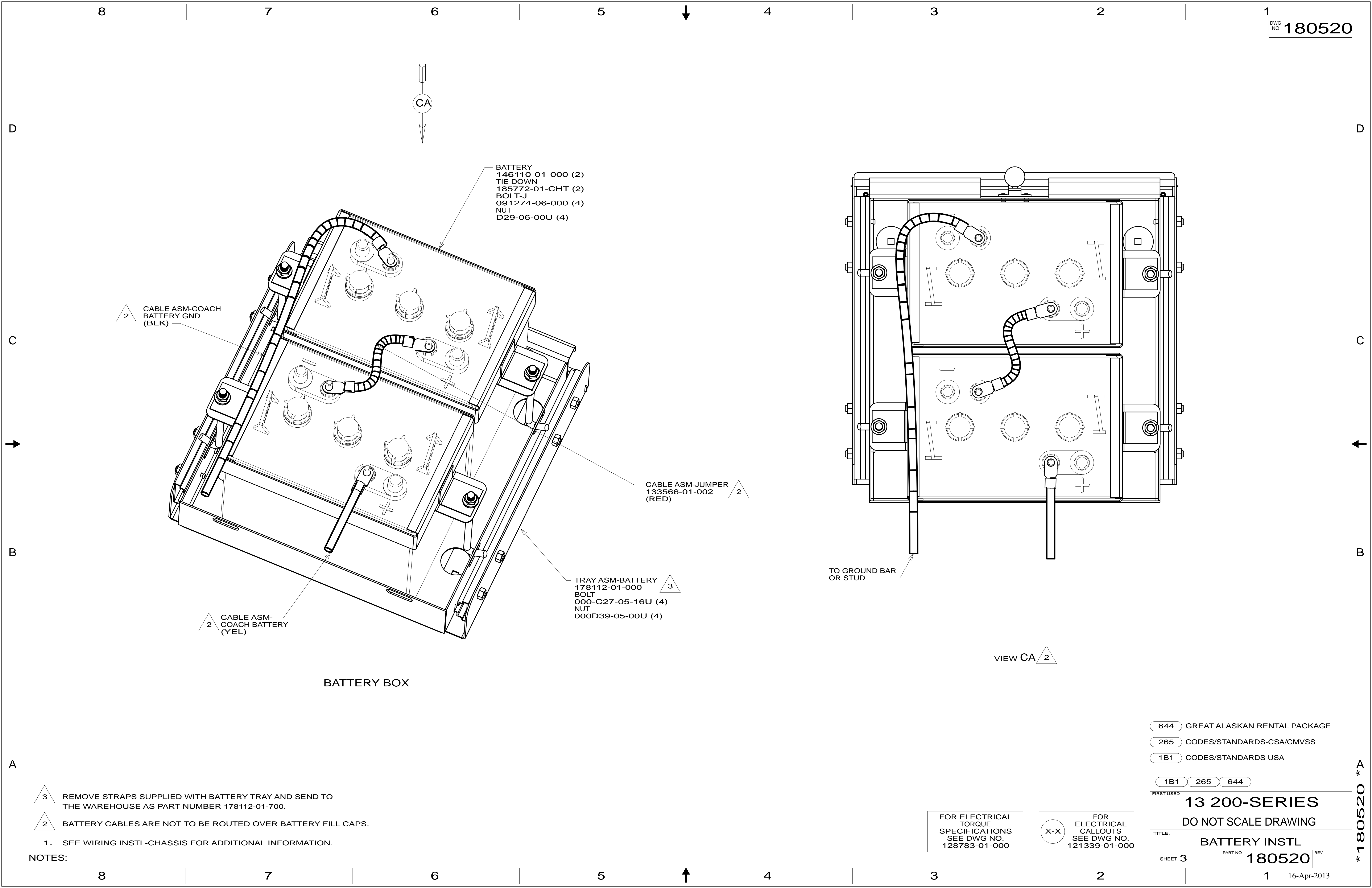
TITLE: **BATTERY INSTL**

SHEET 2 PART NO **180520** REV

FOR ELECTRICAL
 TORQUE
 SPECIFICATIONS
 SEE DWG NO.
 128783-01-000

X-X FOR
 ELECTRICAL
 CALLOUTS
 SEE DWG NO.
 121339-01-000

* 180520 * A



BATTERY
 146110-01-000 (2)
 TIE DOWN
 185772-01-CHT (2)
 BOLT-J
 091274-06-000 (4)
 NUT
 D29-06-00U (4)

2 CABLE ASM-COACH
 BATTERY GND
 (BLK)

CABLE ASM-JUMPER
 133566-01-002
 (RED) 2

TRAY ASM-BATTERY
 178112-01-000 3
 BOLT
 000-C27-05-16U (4)
 NUT
 000D39-05-00U (4)

2 CABLE ASM-
 COACH BATTERY
 (YEL)

BATTERY BOX

TO GROUND BAR
 OR STUD

VIEW CA 2

- NOTES:
- 3 REMOVE STRAPS SUPPLIED WITH BATTERY TRAY AND SEND TO THE WAREHOUSE AS PART NUMBER 178112-01-700.
 - 2 BATTERY CABLES ARE NOT TO BE ROUTED OVER BATTERY FILL CAPS.
 - 1. SEE WIRING INSTL-CHASSIS FOR ADDITIONAL INFORMATION.

- 644 GREAT ALASKAN RENTAL PACKAGE
- 265 CODES/STANDARDS-CSA/CMVSS
- 1B1 CODES/STANDARDS USA

1B1 265 644

FIRST USED	
13 200-SERIES	
DO NOT SCALE DRAWING	
TITLE: BATTERY INSTL	
SHEET 3	PART NO 180520 REV

FOR ELECTRICAL
 TORQUE
 SPECIFICATIONS
 SEE DWG NO.
 128783-01-000

X-X
 FOR
 ELECTRICAL
 CALLOUTS
 SEE DWG NO.
 121339-01-000

* 180520 *