



DANGER

Danger of electrical shock, burns or death. Always remove all power sources before attempting any repair, service or diagnostic work. Power can be present from shore power, generator, inverter or battery. All power sources must be disabled and secured before performing any service.



CAUTION

If you lack the skills, tools or equipment to perform diagnostic or repair work leave such work to an authorized Winnebago Industries dealer or other qualified shop.

DRAWING NO.	MODEL
180345-01	E27N
180345-02	E26P/HE
180345-03	E30T
180345-04	D35G
180345-05	E35B
180345-06	E35F
180345-07	D30A
180345-08	D33C
180345-09	D36V

RELEASE	REV/DATE A	DWG NO 180345
REV ZONE	REVISION RECORD	DATE DFR-ORIG

D-SERIES

		D30A	D33C	D35G	D36V
CABLE ASM-CHASSIS GND EXT (BLK)		133566-12-011	133566-12-042	133566-12-041	133566-12-011
CABLE ASM-CHASSIS BATTERY DISCONNECT SUPPLY (RED)		141415-32-019	141415-32-055	141415-32-043	141415-32-019
CABLE ASM-COACH BATTERY DISCONNECT SUPPLY (YEL)		141416-52-014	141416-52-050	141416-52-043	141416-52-014
CABLE ASM-COACH BATTERY GND (BLK)		133567-12-008	133567-12-008	133567-12-008	133567-12-008
CABLE ASM-CHASSIS BATTERY DISCONNECT RETURN (PUR)		141415-12-023	141415-12-026	141415-12-015	141415-12-025
CABLE ASM-GENERATOR (GRN)		141415-42-072	141415-42-085	141415-42-094	141415-42-093
LEVELING SYSTEM POWER CABLE (BLU)	60M	141415-22-023	141415-22-023	141415-22-023	141415-22-023
LEVELING SYSTEM GND CABLE (BLK)	60M	133566-12-008	133566-12-008	133566-12-008	133566-12-008
WIRE ASM-INVERTER	401	154845-02-053	154845-02-017	154845-02-008	154845-02-029
CABLE ASM-STARTER (RED)		141416-32-010	141416-32-041	141416-32-043	141416-32-010

E-SERIES

		E27N	E26P/E26HE	E30T	E35B	E35F
CABLE ASM-CHASSIS GND EXT (BLK)		133566-12-011	133566-12-018	133566-12-032	133566-12-011	133566-12-010
CABLE ASM-CHASSIS BATTERY DISCONNECT SUPPLY (RED)		141415-32-029	141415-32-010	141415-32-040	141415-32-029	141415-32-030
CABLE ASM-COACH BATTERY DISCONNECT SUPPLY (YEL)		141416-52-024	141416-52-014	141416-52-040	141416-52-024	141416-52-022
CABLE ASM-COACH BATTERY GND (BLK)		133567-12-008	133567-12-008	133567-12-008	133567-12-008	133567-12-008
CABLE ASM-CHASSIS BATTERY DISCONNECT RETURN (PUR)		141415-12-028	-----	141415-12-032	141415-12-028	141415-12-030
CABLE ASM-GENERATOR (GRN)		141415-42-067	141415-42-071	141415-42-074	141415-42-106	141415-42-104
CABLE ASM-GENERATOR GND (BLK)		133566-12-008	133566-12-008	133566-12-008	-----	-----
LEVELING SYSTEM POWER CABLE (BLU)	60M	141415-29-023	141415-29-023	141415-29-023	141415-29-023	141415-29-023
LEVELING SYSTEM GND CABLE (BLK)	60M	133566-12-008	133566-12-008	133566-12-008	133566-12-008	133566-12-008
WIRE ASM-INVERTER	401	154845-02-025	154845-02-006	154845-02-035	154845-02-031	154845-02-026
CABLE ASM-STARTER (RED)		141416-32-010	141416-32-016	141416-32-032	141416-32-010	141416-32-010

- 60M HYDRAULIC LEVEL JACKS-AUTO
- 401 INVERTER-DC/AC, 1000 WATT
- 265 CODES/STANDARDS-CSA/CMVSS
- 1B1 CODES/STANDARDS USA

- 1B1 265



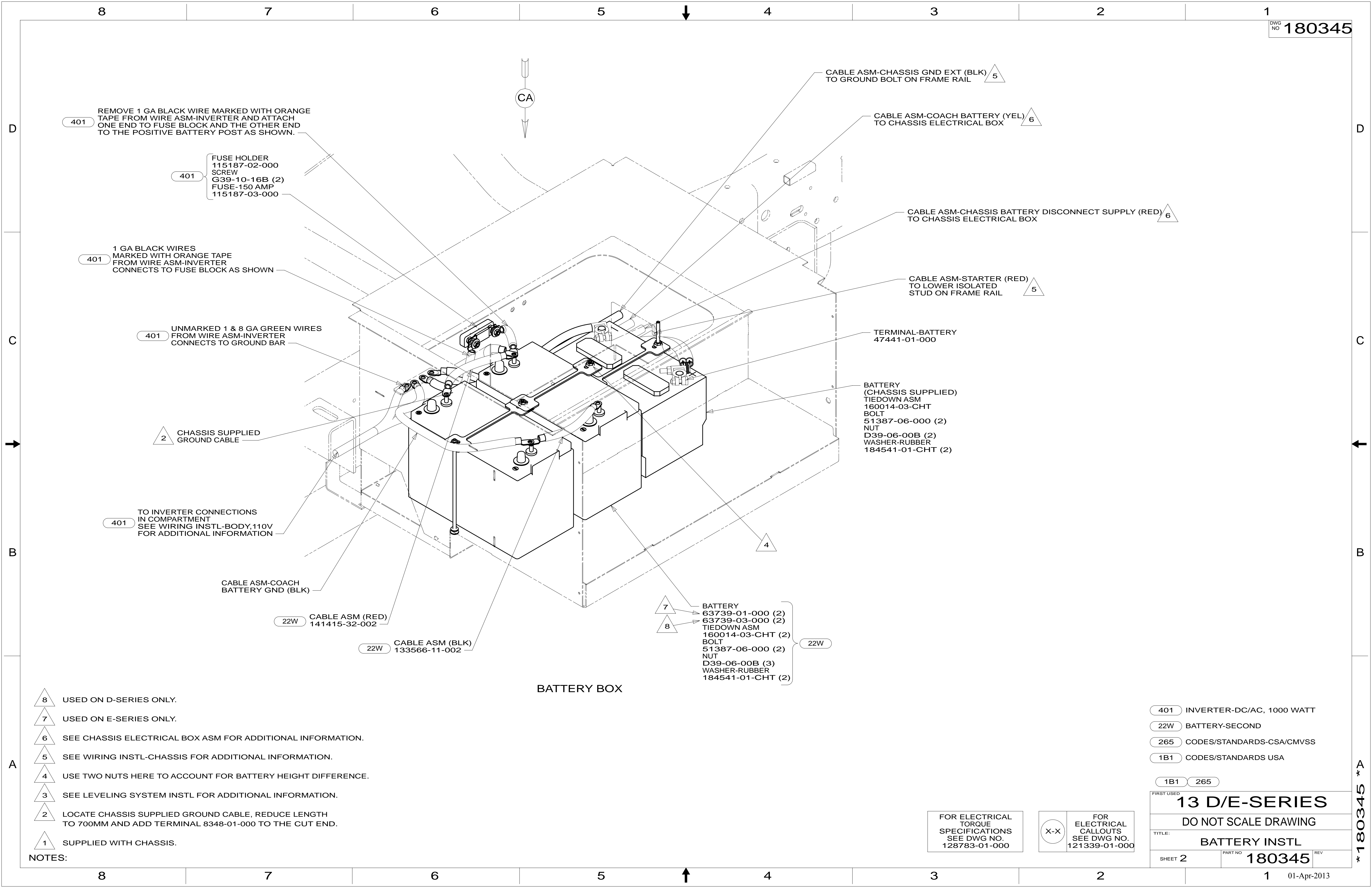
DFTR	ORIG. DATE
CHKR	ALL DIMENSIONS ARE IN MILLIMETERS
P.E.	
M.E.	FIRST USED
DSNR	13 D/E-SERIES
UNSPECIFIED TOLERANCES ARE:	
WHOLE DIM (X)	: 3
ONE-PLACE (X.X)	: 1.5
TWO-PLACE (X.XX)	: 0.50
ANGLE	: 1°
THIRD ANGLE PROJECTION	
DO NOT SCALE DRAWING	REFER TO ES0018 FOR FASTENER TIGHTENING GUIDELINES
TITLE: BATTERY INSTL	
SHEET 1 OF 3	PART NO 180345 REV

1 SEE DRAWING 154845-02 TO DETERMINE CABLE ASM PART NUMBERS AND STRUCTURE.

FOR ELECTRICAL TORQUE SPECIFICATIONS SEE DWG NO. 128783-01-000

FOR ELECTRICAL CALLOUTS SEE DWG NO. 121339-01-000

* 180345 * A



BATTERY BOX

- 8** USED ON D-SERIES ONLY.
- 7** USED ON E-SERIES ONLY.
- 6** SEE CHASSIS ELECTRICAL BOX ASM FOR ADDITIONAL INFORMATION.
- 5** SEE WIRING INSTL-CHASSIS FOR ADDITIONAL INFORMATION.
- 4** USE TWO NUTS HERE TO ACCOUNT FOR BATTERY HEIGHT DIFFERENCE.
- 3** SEE LEVELING SYSTEM INSTL FOR ADDITIONAL INFORMATION.
- 2** LOCATE CHASSIS SUPPLIED GROUND CABLE, REDUCE LENGTH TO 700MM AND ADD TERMINAL 8348-01-000 TO THE CUT END.
- 1** SUPPLIED WITH CHASSIS.

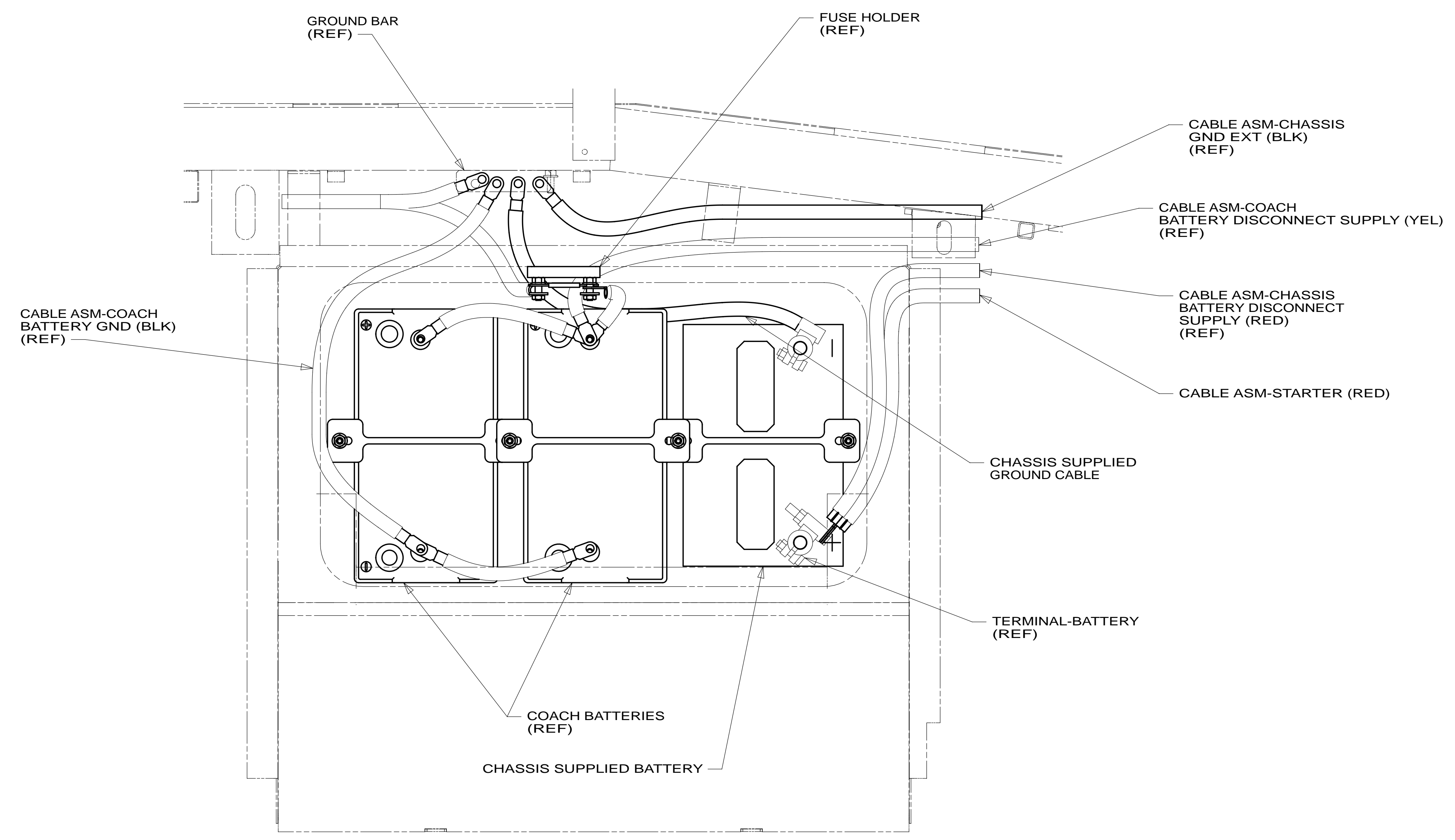
- 401** INVERTER-DC/AC, 1000 WATT
- 22W** BATTERY-SECOND
- 265** CODES/STANDARDS-CSA/CMVSS
- 1B1** CODES/STANDARDS USA

FIRST USED	
13 D/E-SERIES	
DO NOT SCALE DRAWING	
TITLE: BATTERY INSTL	
SHEET 2	PART NO 180345 REV

FOR ELECTRICAL TORQUE SPECIFICATIONS SEE DWG NO. 128783-01-000

FOR ELECTRICAL CALLOUTS SEE DWG NO. 121339-01-000

* 180345 * A



VIEW CA

- 265 CODES/STANDARDS-CSA/CMVSS
- 1B1 CODES/STANDARDS USA
- 1B1 265

FIRST USED **13 D/E-SERIES**

DO NOT SCALE DRAWING

TITLE: **BATTERY INSTL**

SHEET 3 PART NO **180345** REV

FOR ELECTRICAL TORQUE SPECIFICATIONS SEE DWG NO. 128783-01-000

FOR ELECTRICAL CALLOUTS SEE DWG NO. 121339-01-000

* 180345 * A