

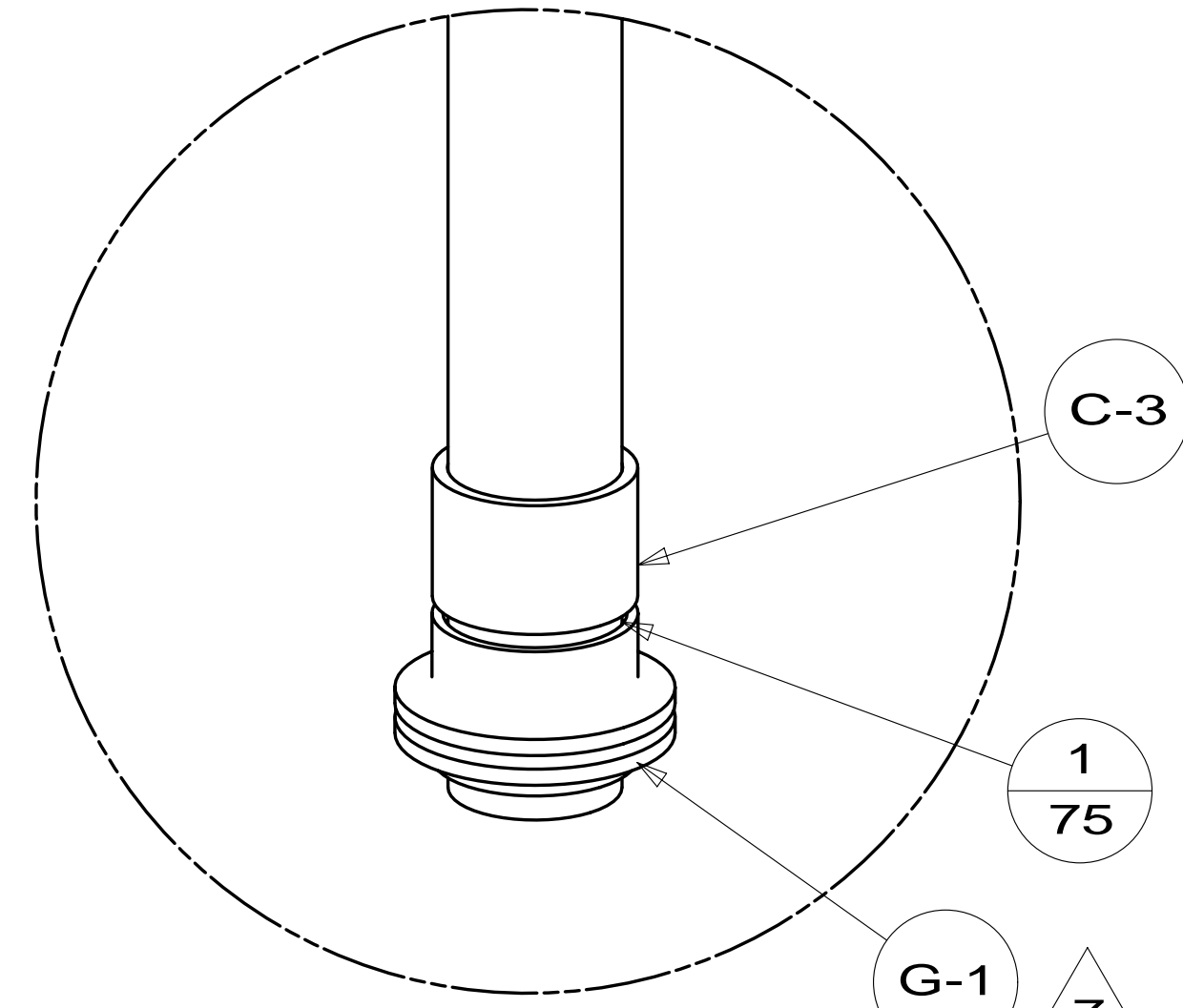
- 22A VACUUM SYS-CENTRAL-WITHOUT
- 22T VACUUM SYSTEM-CENTRAL
- 21S WASHER/DRYER STACKED
- 1B1 CODES/STANDARDS USA
- 265 CODES/STDS-CSA,CMVSS
- 21M WASHER/DRYER PREP
- 214 DISHWASHER DRAWER STYLE
- 215 DISHWASHER WITHOUT

- 12. REQUIRES 5 GALLONS RV ANTIFREEZE 182955-01-000 PER TOILET. FOLLOW TECMA TOILET WINTERIZATION PROCEDURE.
- 11. GLUE FITTING AFTER CABINET IS INSTALLED.
- 10. APPLY PRIMER 126427-02-000 AND CEMENT 126427-01-000 BETWEEN ELBOW AND FLEX PIPE.
- 9. SEE DRAWING 061607 FOR INSTALLATION OF GROMMETS.
- 8. SECURE DRAINAGE PIPES TO CABINET USING WIRE TIE 108046-02-000, AND SCREW 000G67-10-12B AT INTERVALS OF NOT OF NOT MORE THAN 4 FEET APART.
- 7. SECURE VENT PIPE TO GROMMET WITH CLAMP 062401-02-000.
- 6. VENT PIPE MUST PROJECT 51 MIN AND 64 MAX ABOVE ROOF FOR PROPER FIT AND FUNCTION. ADD S-1 (116666-01-CHT SEAL-VENT PIPE) AROUND PIPE ON ROOF BEFORE VENT CAP IS INSTALLED.
- 5. SEAL AROUND SHOWER WITH SILICONE.
- 4. USE SMOOTH PLUMBERS PUTTY 167459-01-000 TO SEAL STRAINER (0.2 PER STRAINER).
- 3. ALL PIPE AND FITTINGS TO BE ASSEMBLED WITH SOLVENT 004020-01-000 (USA), 004020-02-000 (CAN)
- 2. SLOPE OF TRAP ARM MUST BE 6 PER 305 mm.
- 1. SLOPE OF HORIZONTAL PIPING TO BE MINIMUM OF 3 PER 305 mm.

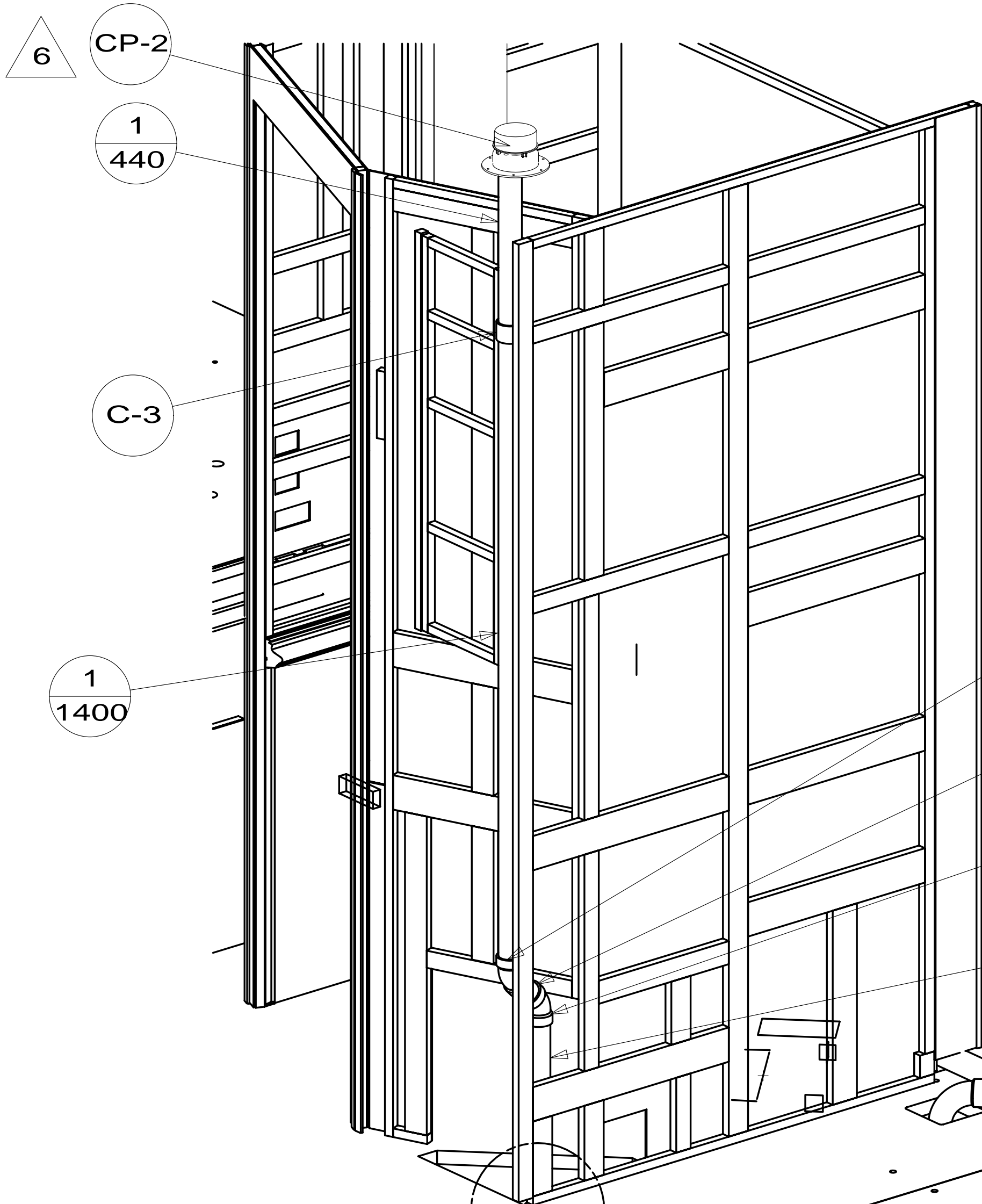
WINNEBAGO		COPYRIGHT 2013 WINNEBAGO INDUSTRIES, INC.	
DFT-ORIG	ORIG. DATE	ALL DIMENSIONS ARE IN MILLIMETERS	
CHKR			
P.E.			
M.E.	FIRST USED	13 R42QD	
DSNR			
UNSPECIFIED TOLERANCES ARE:		MATERIAL:	
WHOLE DIM (X)	: 3		
ONE-PLACE (X.X)	: 1.5		
TWO-PLACE (X.XX)	: 0.50		
ANGLE	: 1°		
THIRD ANGLE PROJECTION			
DO NOT SCALE DRAWING		REFER TO ES0018 FOR FASTENER TIGHTENING GUIDELINES	
TITLE: DRAINAGE SYSTEM INSTL			
SHEET 1 OF 4	PART NO 179907	REV	
REF:	1	24-Apr-2013	

FOR DRAINAGE CALLOUTS SEE DWG NO 116229-01-000

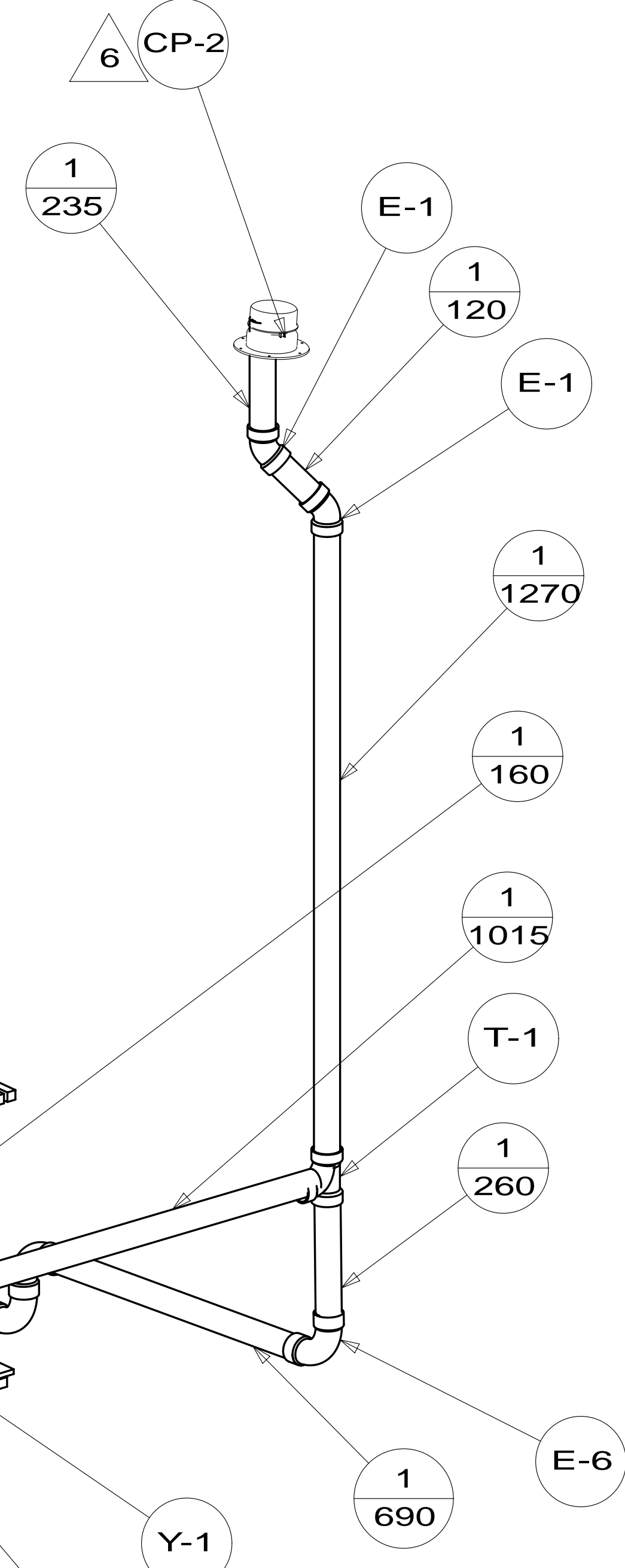
NOTES:



DETAIL F
(SHOWN W/OUT CABINETS AND FLOOR)



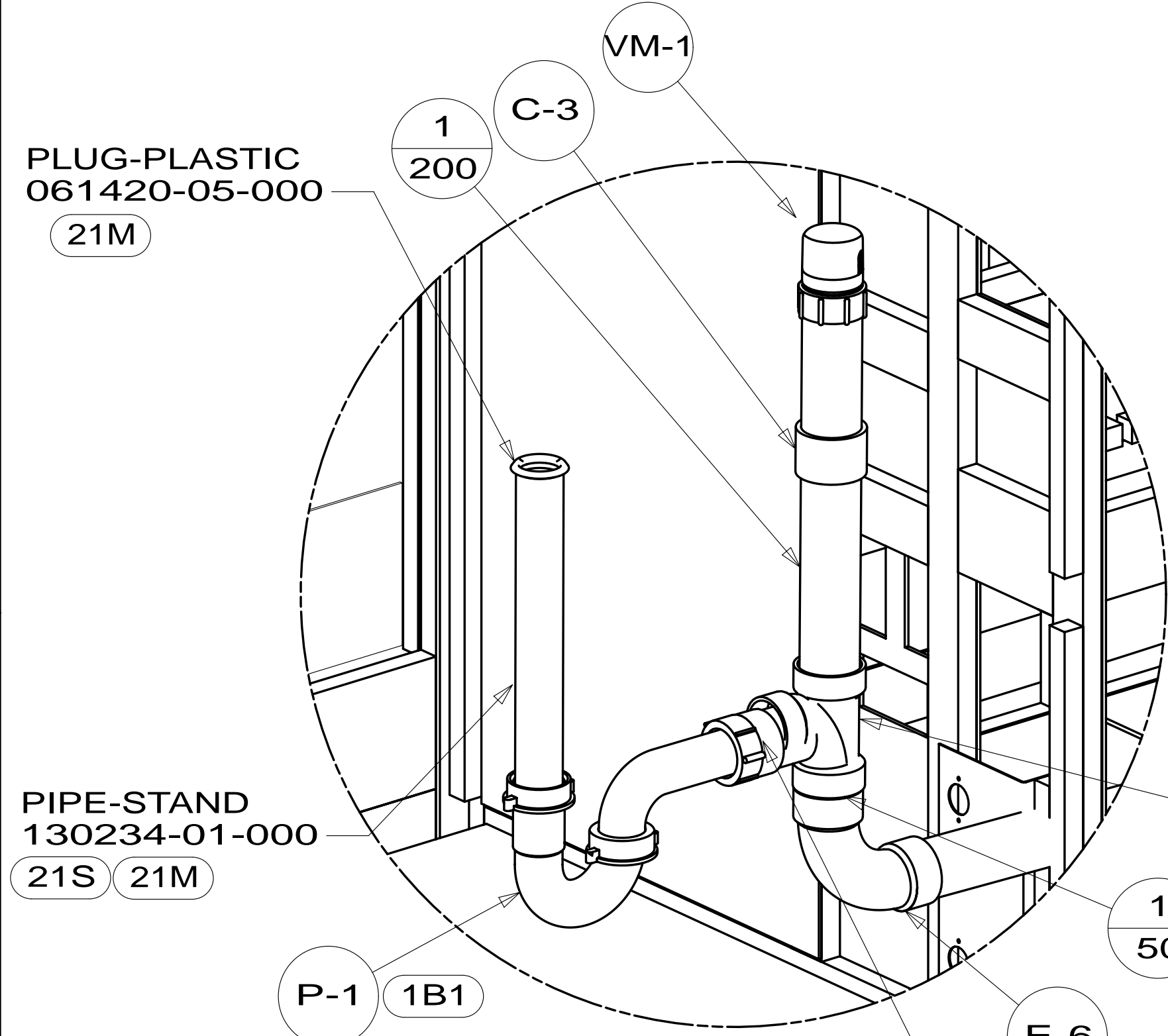
- E-1
- 1/75
- E-1
- 1/460



WASTE ASM
SUPPLIED W/FAUCET
NUT
130403-01-000

- 1/765
- 1B1
- P-1
- 265
- P-3
- 1B1
- A-15

FIRST USED	13 R42QD	
TITLE:	DO NOT SCALE DRAWING	
	DRAINAGE SYSTEM INSTL	
SHEET 2	PART NO 179907	REV



PLUG-PLASTIC
061420-05-000
21M

PIPE-STAND
130234-01-000
21S 21M

- P-1 1B1
- P-3 265
- A-15 1B1

DETAIL H

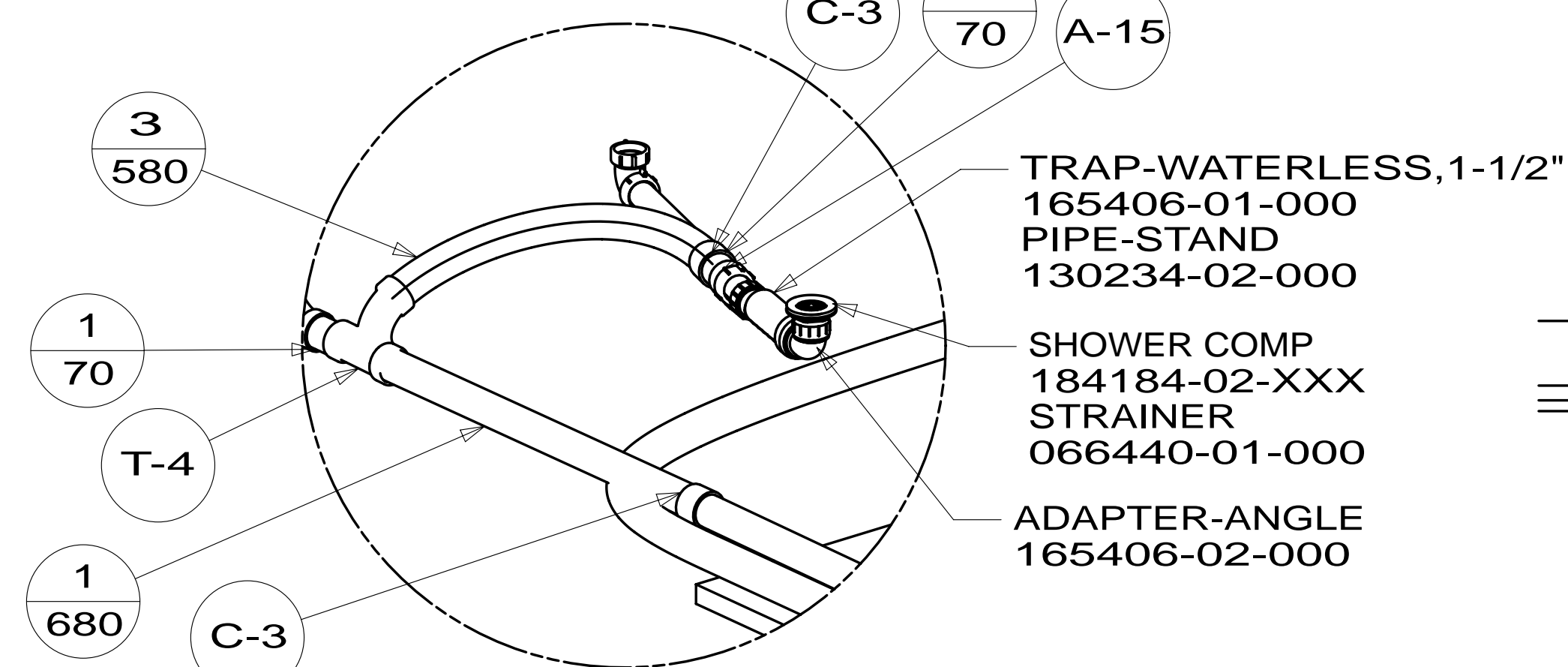
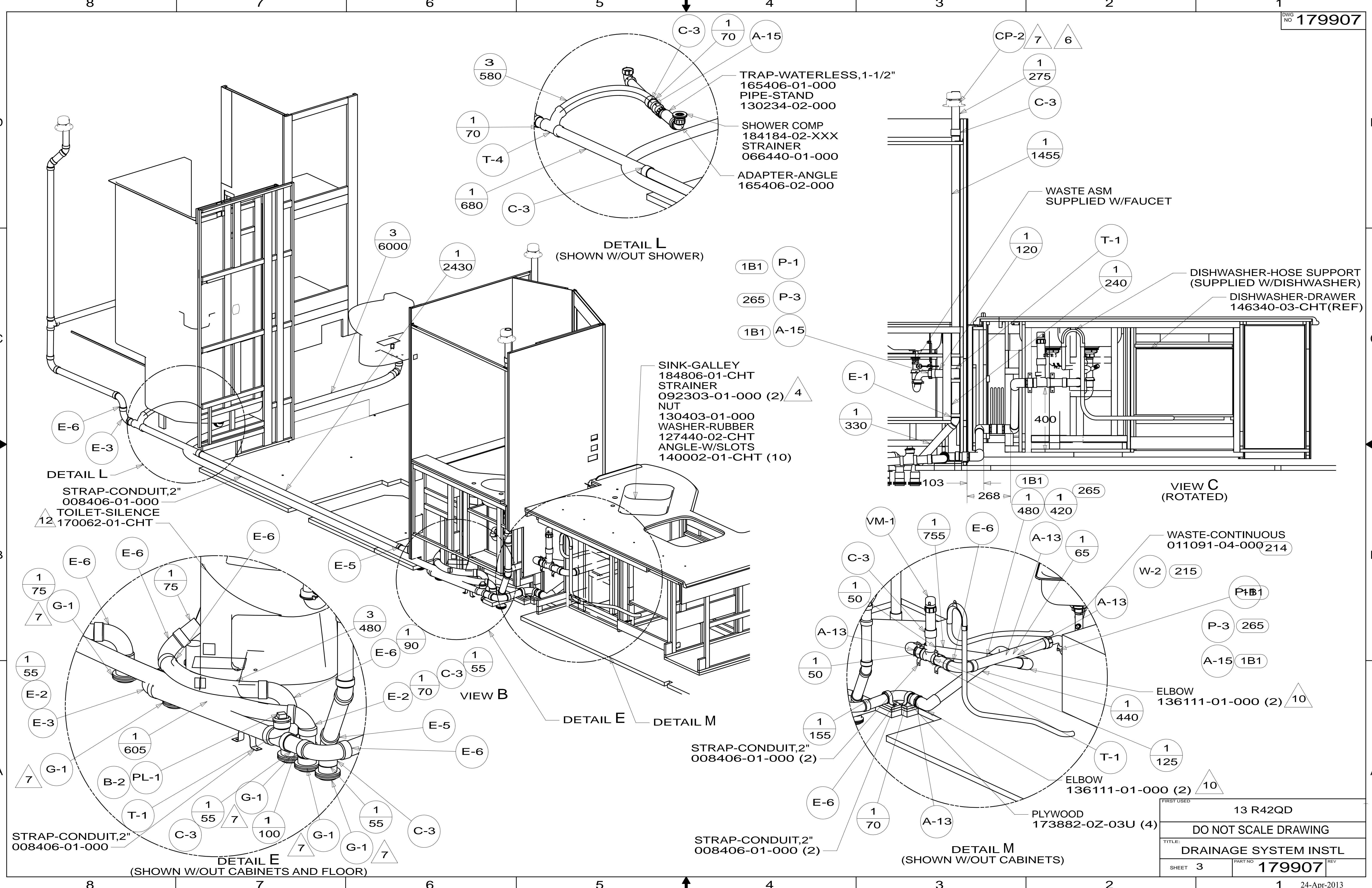
DETAIL F

TOILET-SILENCE
170062-01-CHT

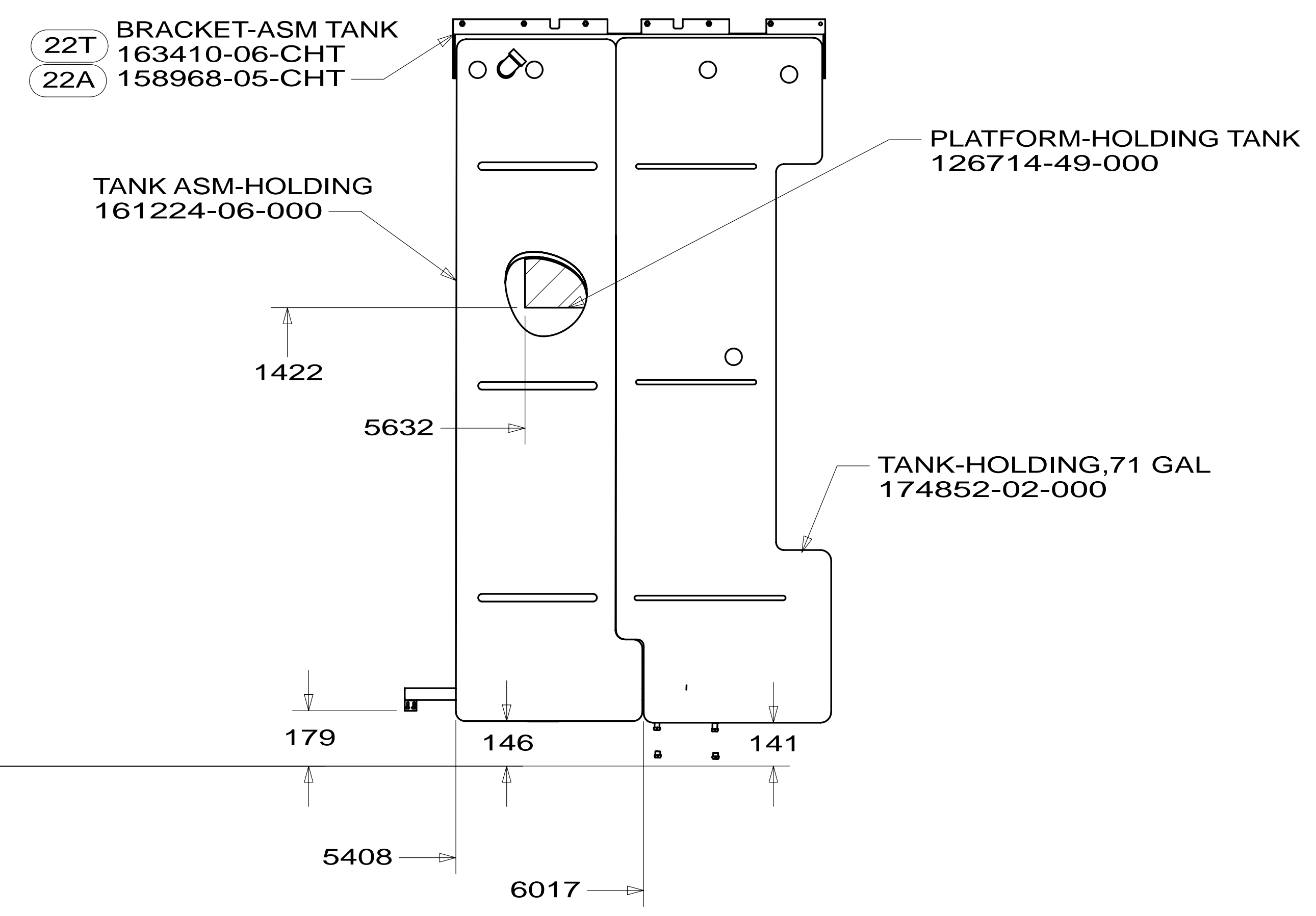
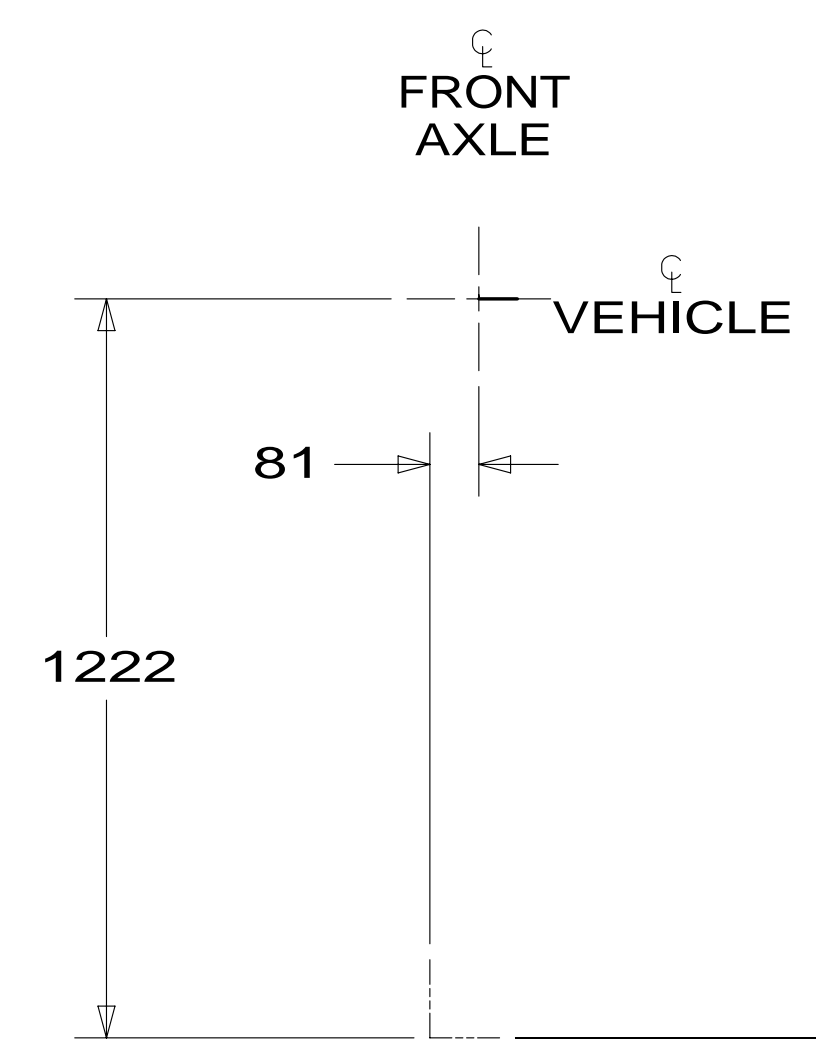
- 1/300
- E-2
- 1/80
- C-3

VIEW A

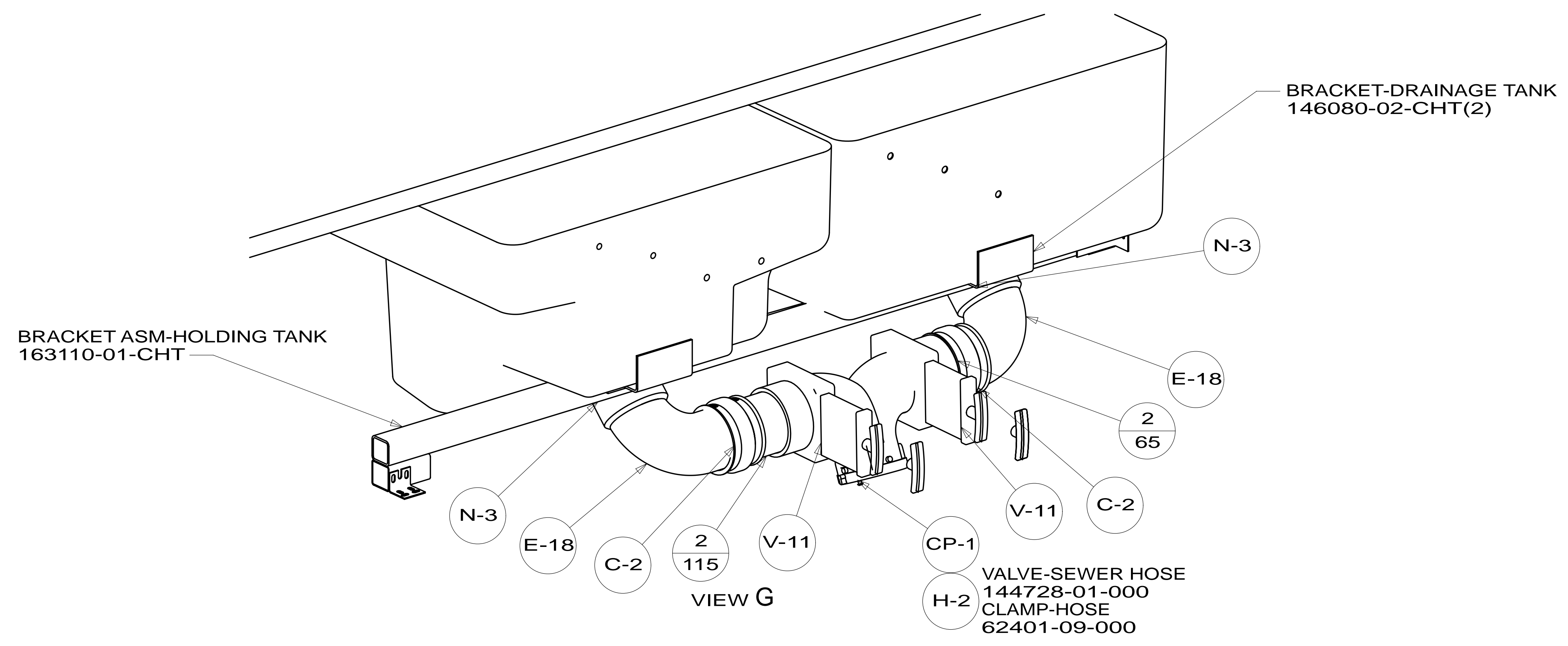
DETAIL H



FIRST USED	13 R42QD
DO NOT SCALE DRAWING	
TITLE: DRAINAGE SYSTEM INSTL	
SHEET 3	PART NO 179907 REV
24-Apr-2013	

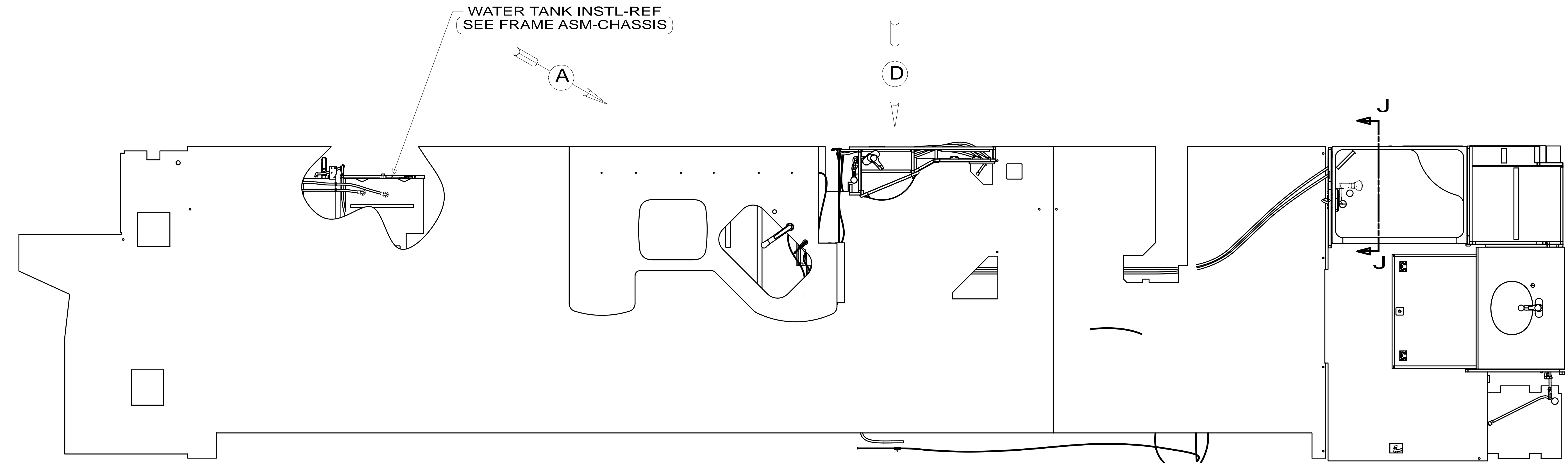


TOP VIEW SHOWING TANKS AND DRAINS



VIEW G

FIRST USED	13 R42QD	
DO NOT SCALE DRAWING		
TITLE: DRAINAGE SYSTEM INSTL		
SHEET 4	PART NO 179907	REV
		1 24-Apr-2013



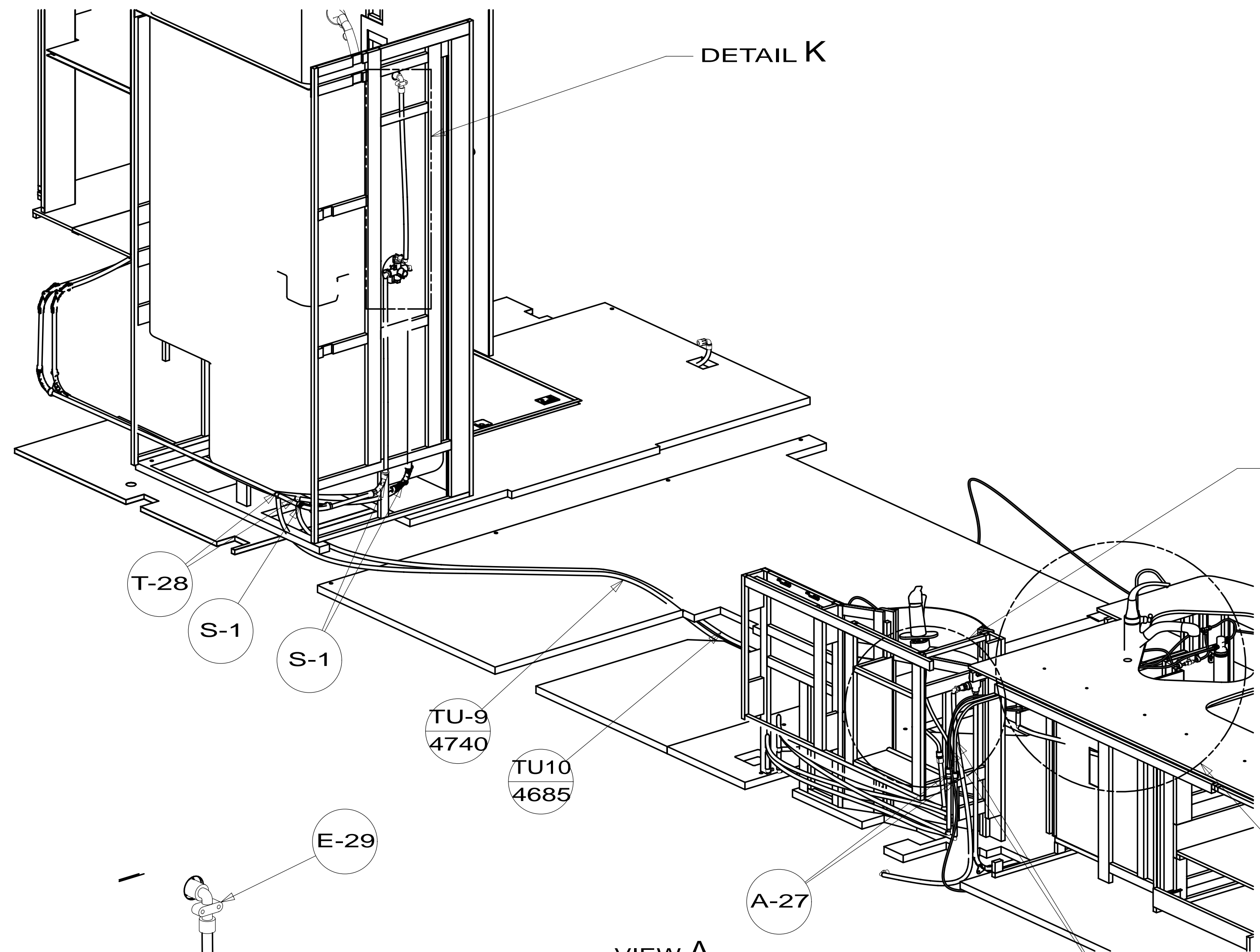
- NOTES:
- 12 INSTALL FAUCET WITHOUT BASEPLATE.
 - 11. REQUIRES 5 GALLONS OF 182955-0-000 ANTIFREEZE FOR WINTERIZATION.
 - 10 VALVE MUST REMAIN OPEN AFTER WATER TEST.
 - 9. FLUSHING SYSTEM REQUIRES 125697-06-000 INSTRUCTION SHEET.
 - 8. ALL CRIMP FITTINGS TO PEX TUBING REQUIRE 1/2" CLAMP 140171-03-000.
 - 7. ALL CRIMP FITTINGS TO PEX TUBING REQUIRE 5/8" CLAMP 140171-04-000.
 - 6 LABEL HOT AND COLD SUPPLY TUBES AND TAPE FITTING TO TUBE BEFORE CABINET SET TO PREVENT MOVEMENT.
 - 5 ADD PIPE WRAP (LADDER SCRAP 110157-02-000) INSULATION.
 - 4 ADD TEFLON TAPE 010405-02-000.
 - 3. ALL TUBING TO BE SECURED AT 1200 INTERVALS MAXIMUM WITH CLAMP 010495-01-000 AND SCREW 000G67-10-12U OR EQUIVALENT.
 - 2. TUBING TO BE INSTALLED WITH SUFFICIENT SLOPE TO PROVIDE DRAINAGE TO NEAREST VALVE.
 - 1. PLASTIC FITTINGS TO BE SEALED WITH SEALANT 084456-01-000.

- 21S WASHER & DRYER-PAIR
- 21M WASHER/DRYER PREP
- 214 DISHWASHER-DRAWER STYLE
- 215 DISHWASHER WITHOUT
- 505 HOSE REEL-WATER,POWERED

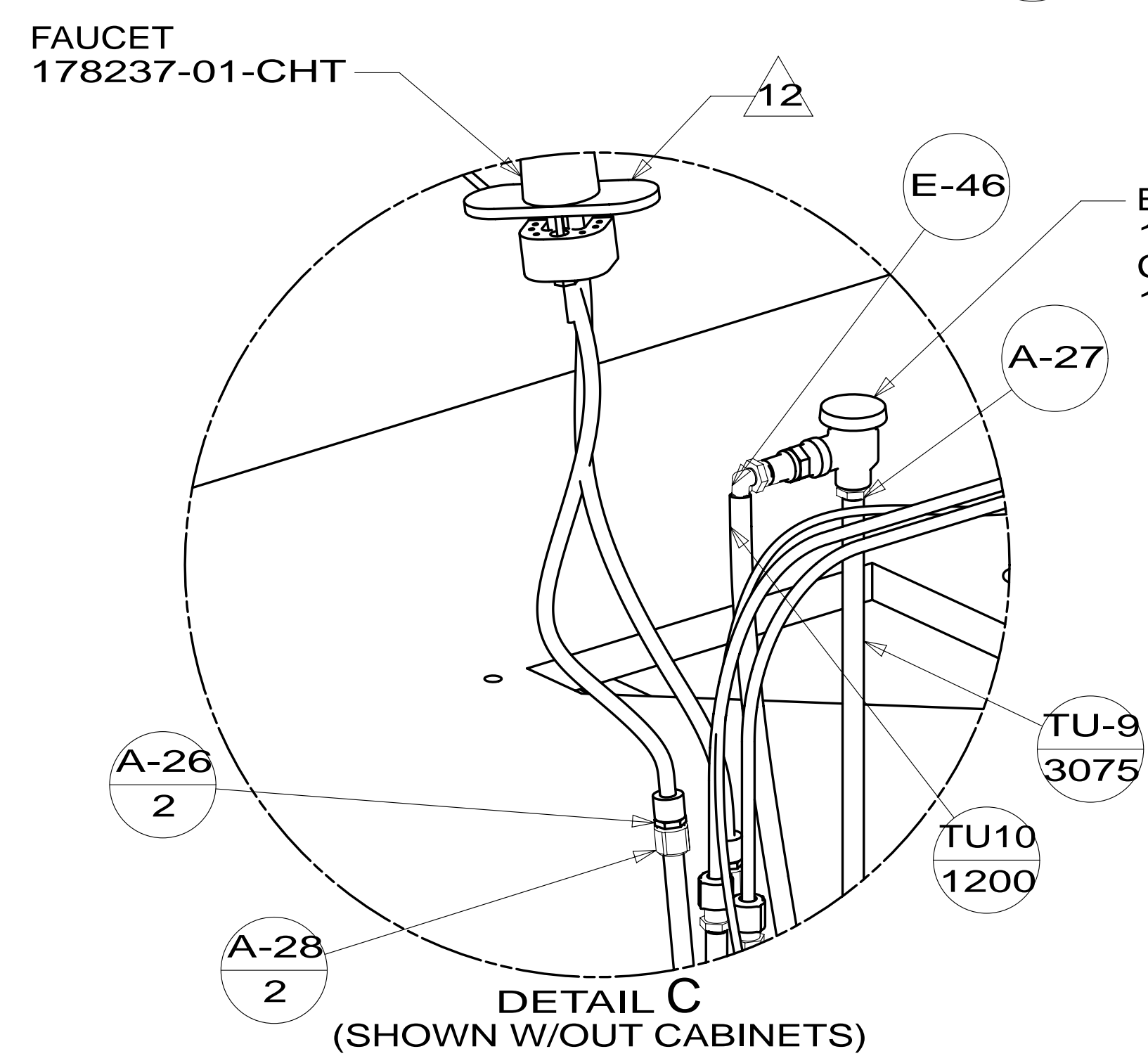
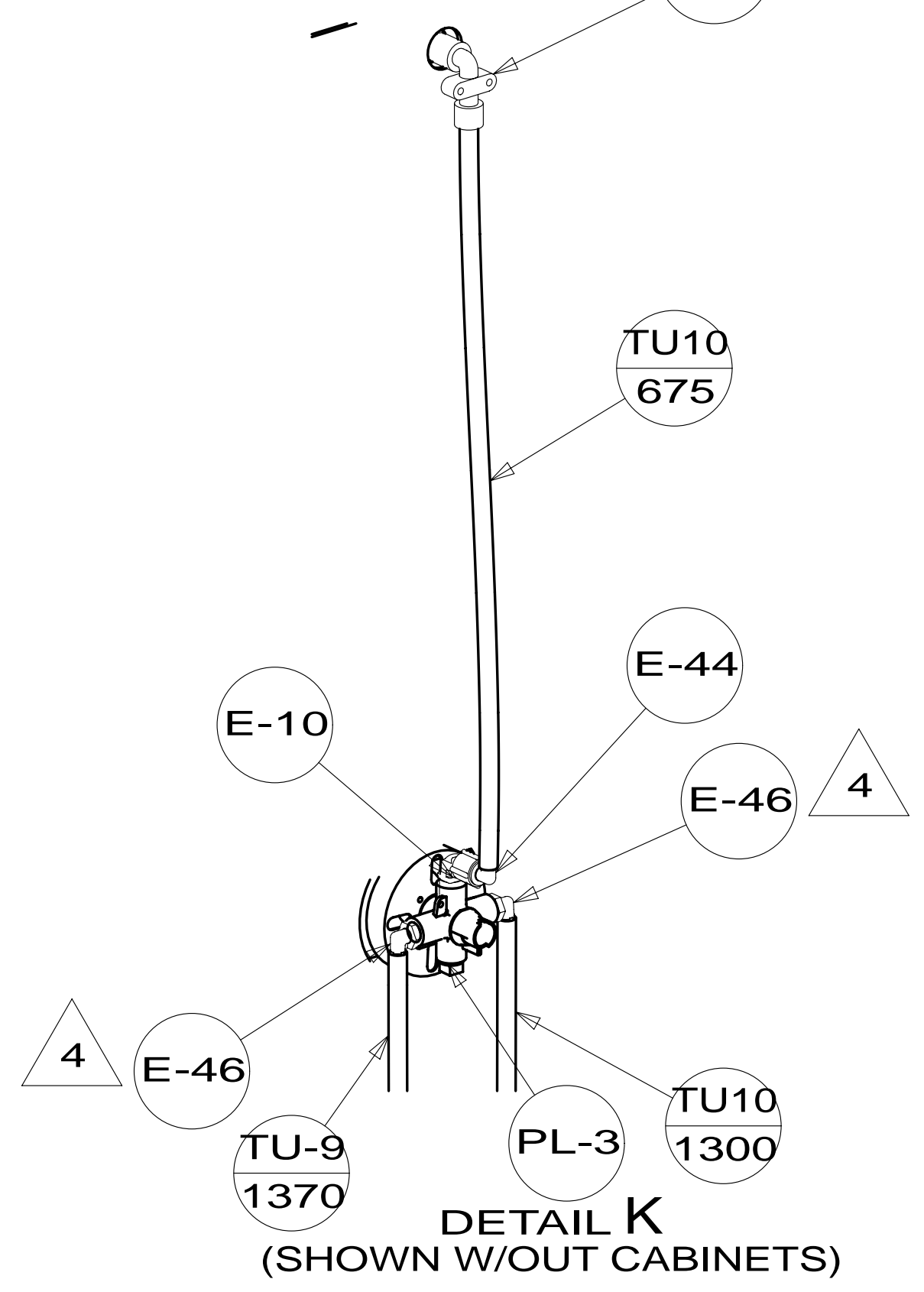
FOR
WATER
CALLOUTS
SEE DWG NO
116230-01-000

		COPYRIGHT 2013 WINNEBAGO INDUSTRIES, INC.
DFT-ORIG	ORIG. DATE	
CHKR	ALL DIMENSIONS ARE IN MILLIMETERS	
P.E.		
M.E.	FIRST USED	
DSNR	13 R42QD	
UNSPECIFIED TOLERANCES ARE:		MATERIAL:
WHOLE DIM (X)	: 3	
ONE-PLACE (X.X)	: 1.5	
TWO-PLACE (X.XX)	: 0.50	
ANGLE	: 1°	
THIRD ANGLE PROJECTION		
DO NOT SCALE DRAWING	REFER TO ES0018 FOR FASTENER TIGHTENING GUIDELINES	
TITLE: WATER SYSTEM INSTL		
SHEET 1 OF 4	PART NO 179917	REV
REF:	1	05-Mar-2013

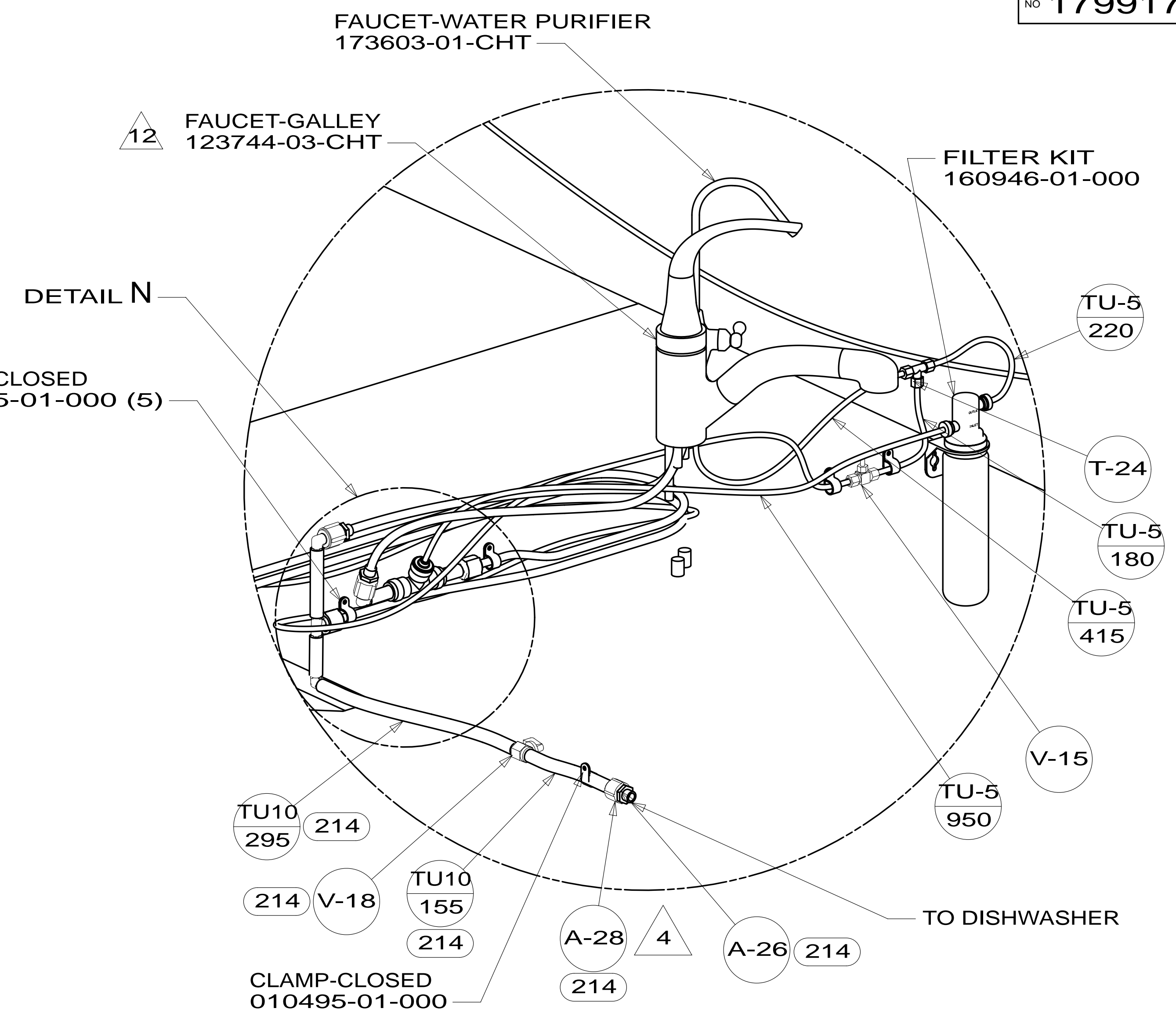
* 179917 * A



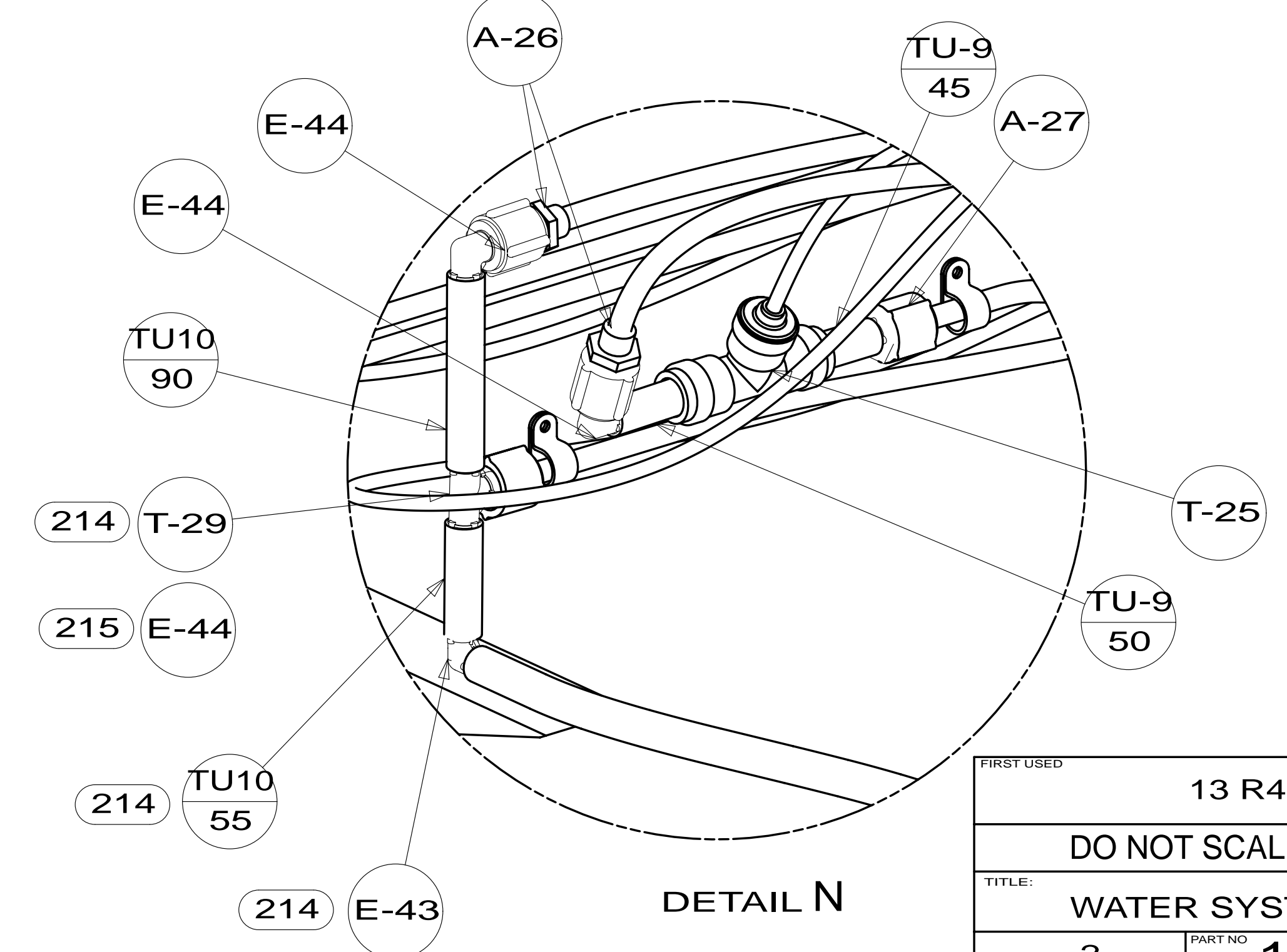
VIEW A



BREAKER-VACUUM 125697-04-000
CHECK VALVE 125697-03-000

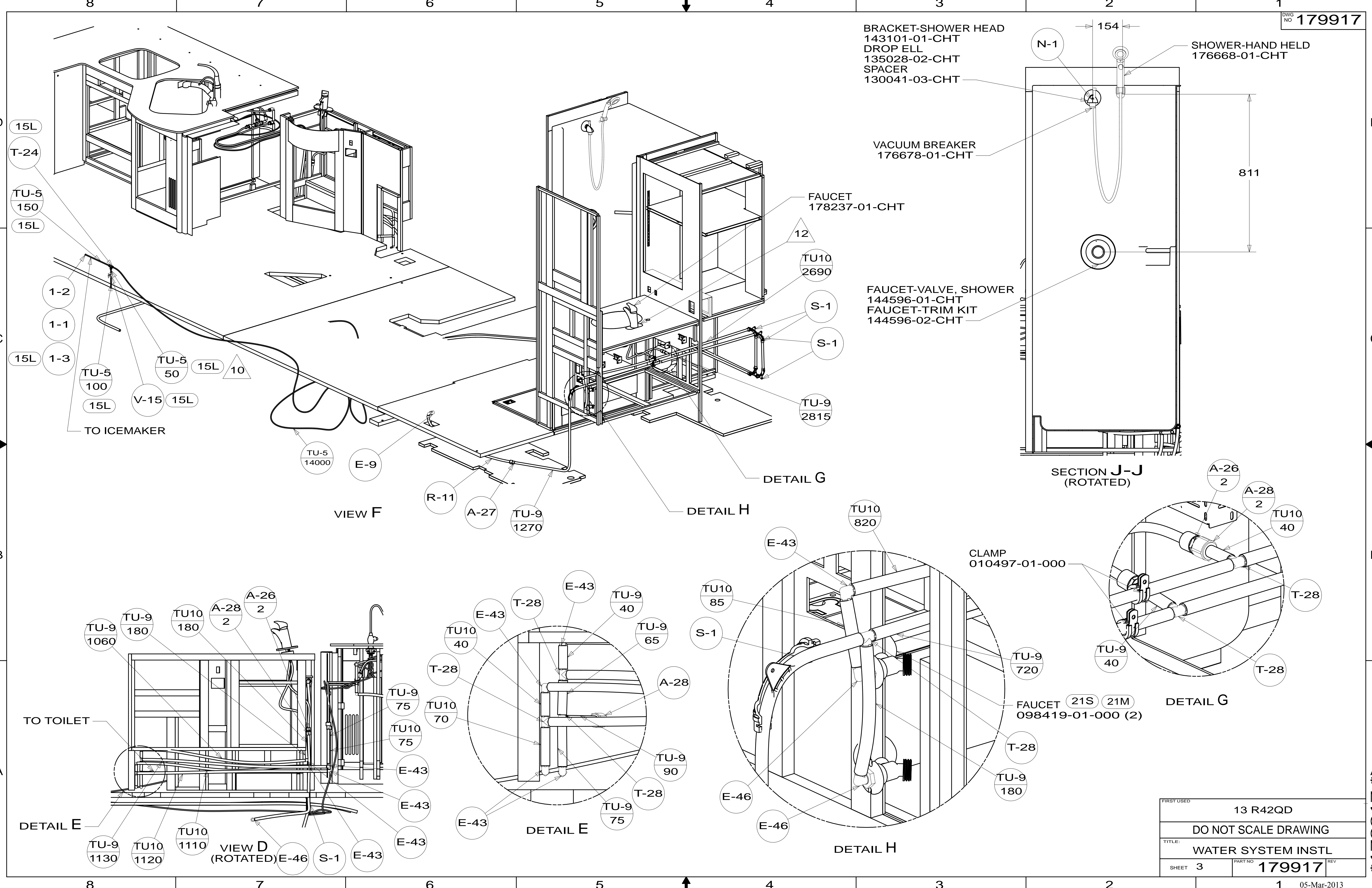


DETAIL B (SHOWN W/OUT CABINETS)



FIRST USED	13 R42QD		
TITLE:	DO NOT SCALE DRAWING		
TITLE:	WATER SYSTEM INSTL		
SHEET 2	PART NO	179917	REV
			05-Mar-2013

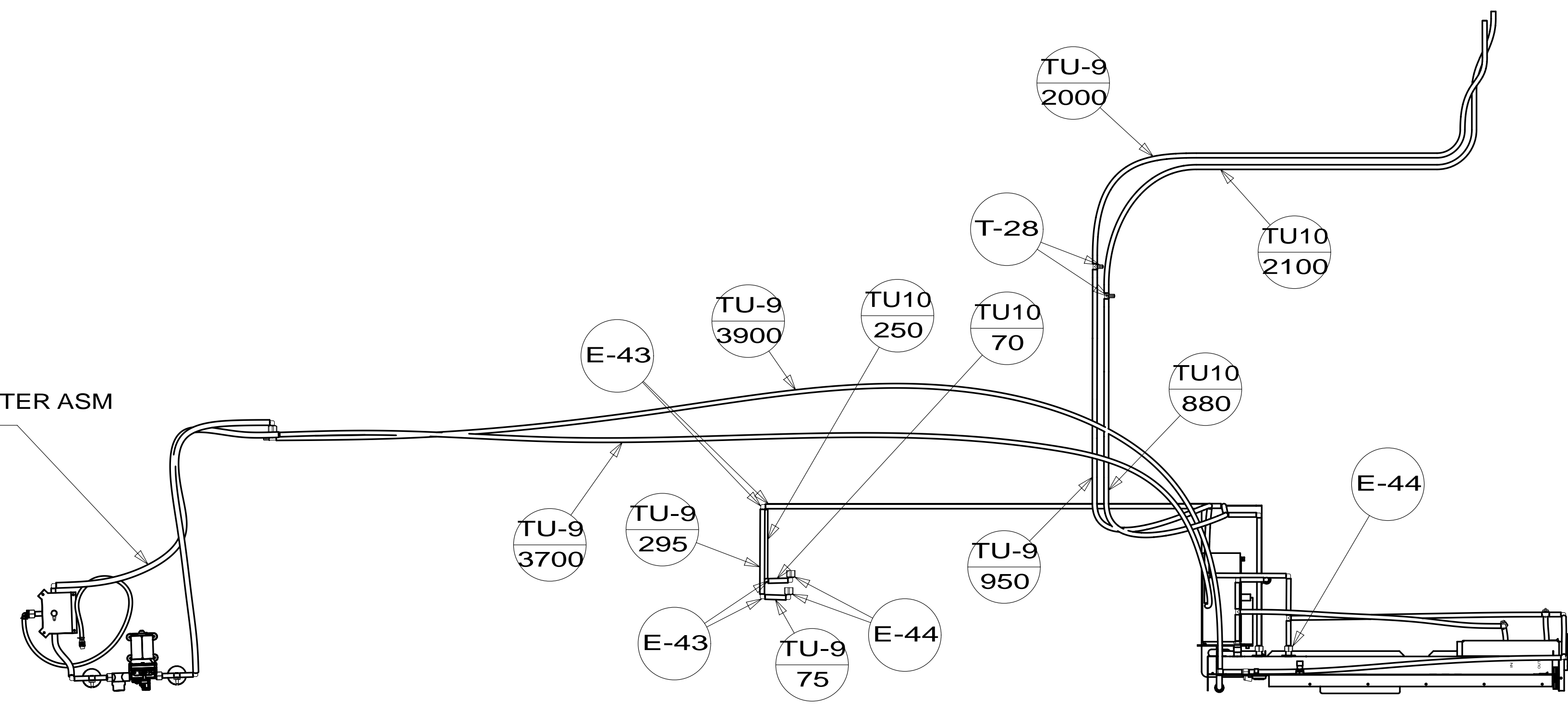
* 179917 * A



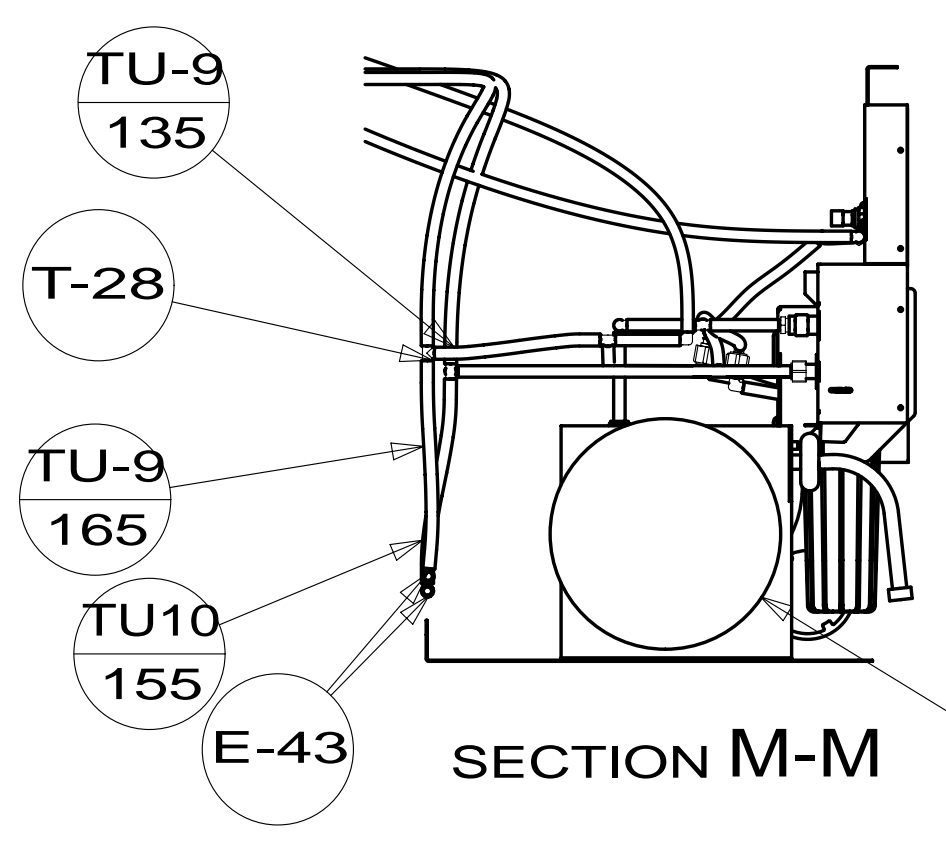
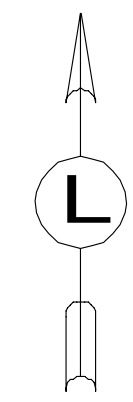
FIRST USED	13 R42QD	
TITLE:	DO NOT SCALE DRAWING	
	WATER SYSTEM INSTL	
SHEET 3	PART NO 179917	REV
		05-Mar-2013

* 179917 * A

WATER PUMP CENTER ASM
182945-01-XXX



SHOWING LINES UNDER FLOOR



- HOSE-REEL, POWERED 505
- 142675-01-CHT BRACKET
- 145758-01-CHT RIVET
- 118626-01-CHT (4) SCREW
- 000G39-10-20U (2)

TO FURNACE-HYDRONIC

WATER CENTER ASM
157511-22-XXX

SERVICE CTR ASM
163268-17-XXX

VIEW L

FIRST USED	13 R42QD		
TITLE:	DO NOT SCALE DRAWING		
TITLE:	WATER SYSTEM INSTL		
SHEET 4	PART NO	179917	REV
			05-Mar-2013

* 179917 * A