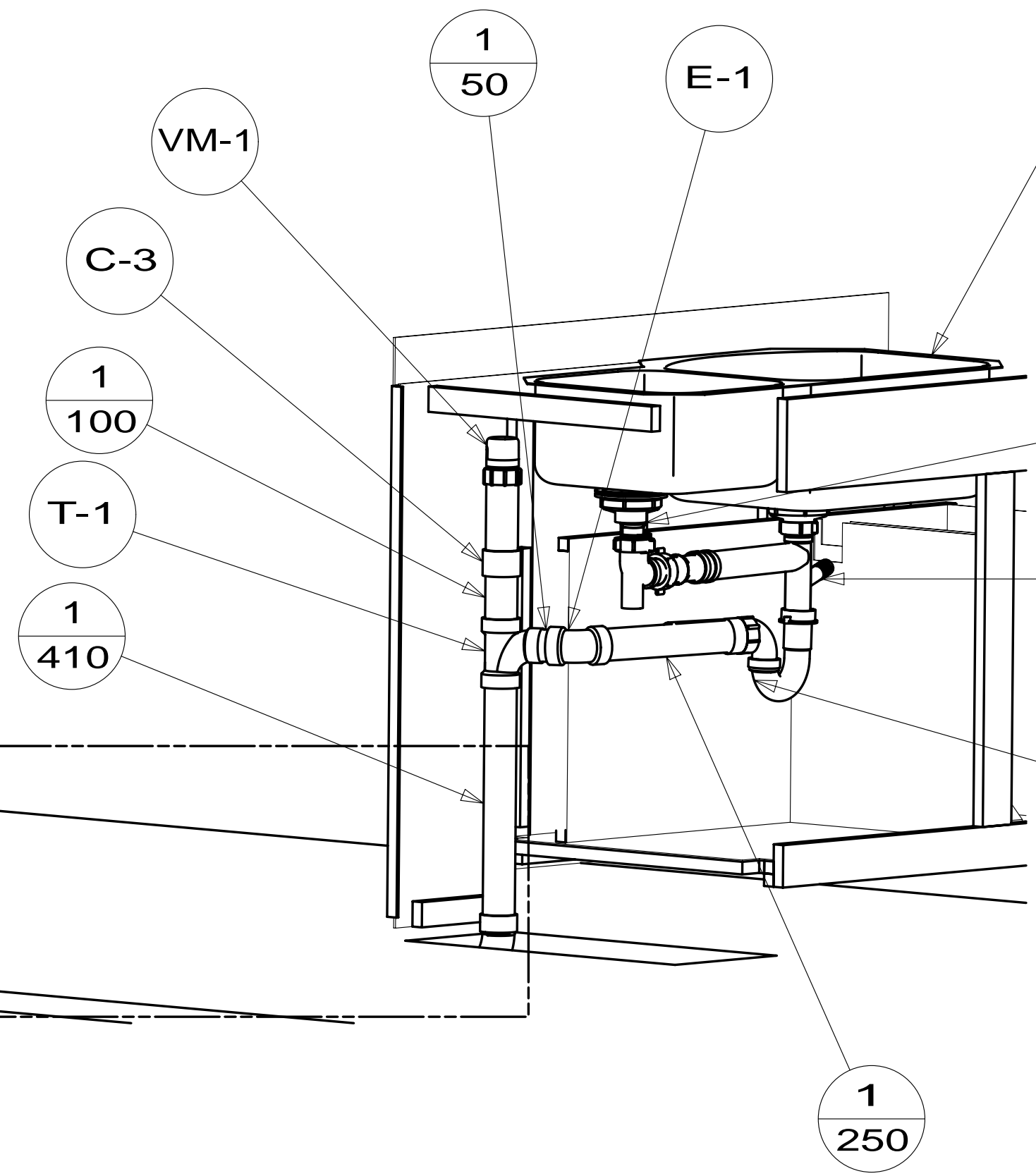
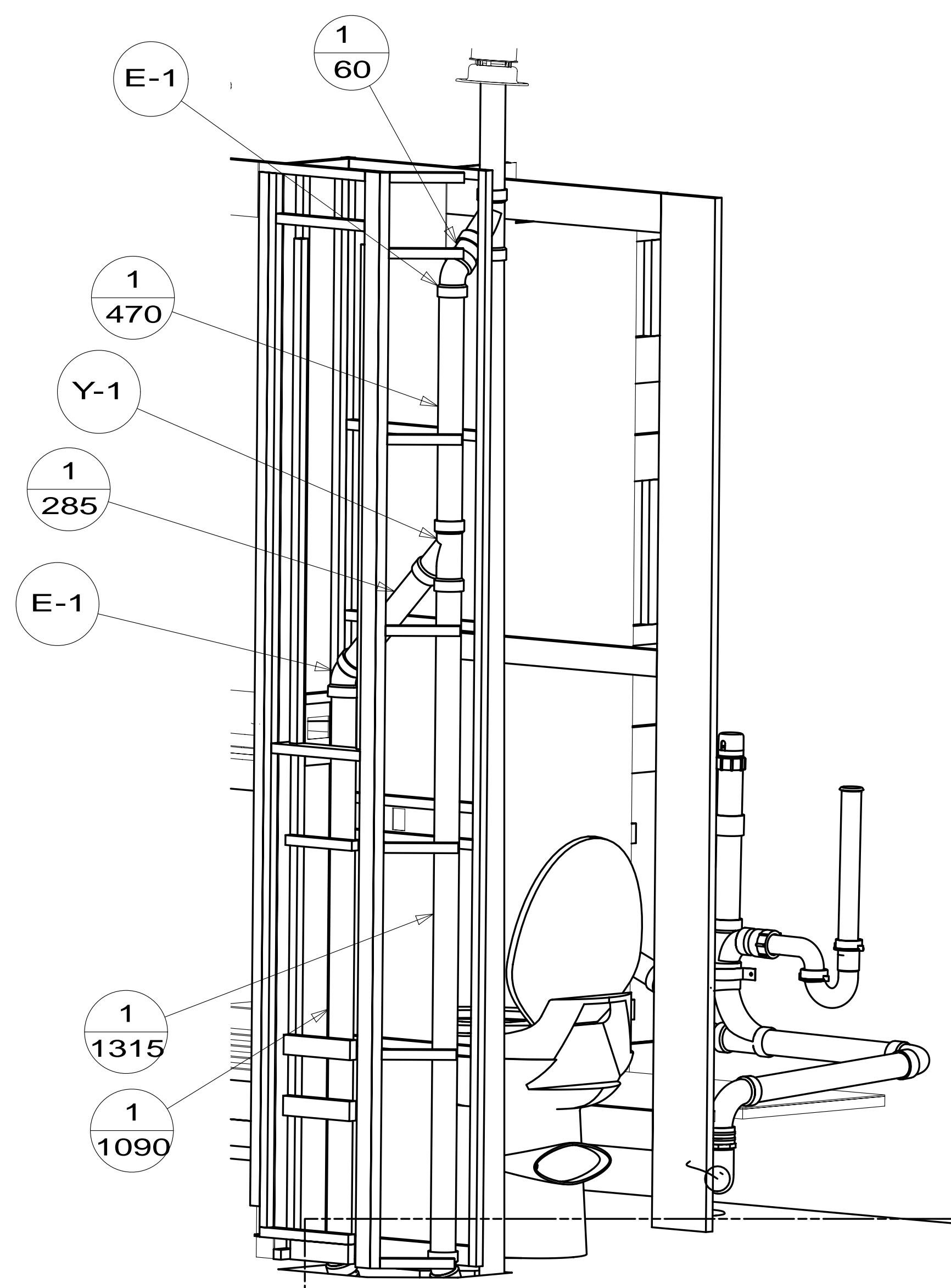


- 21S WASHER/DRYER STACKED
- 1B1 CODES/STANDARDS USA
- 265 CODES/STDS-CSA,CMVSS
- 54E WASHER DRYER
- 21M WASHER/DRYER PREP
- 214 DISHWASHER DRAWER STYLE
- 215 DISHWASHER WITHOUT

- NOTES:
10. APPLY PRIMER 126427-02-000 AND CEMENT 126427-01-000 BETWEEN ELBOW AND FLEX PIPE.
 9. SEE DRAWING 061607 FOR INSTALLATION OF GROMMETS.
 8. SECURE DRAINAGE PIPES TO CABINET USING WIRE TIE 108046-02-000, AND SCREW 000G67-10-12U AT INTERVALS OF NOT OF NOT MORE THAN 4 FEET APART.
 7. SECURE VENT PIPE TO FLOOR WITH CLAMP 062401-02-000 (2), SCREW 000G67-10-12U (2), BRACKET 136878-01-CHT (2).
 6. VENT PIPE MUST PROJECT 51 MIN AND 64 MAX ABOVE ROOF FOR PROPER FIT AND FUNCTION. ADD S-1 (116666-01-CHT SEAL-VENT PIPE) AROUND PIPE ON ROOF BEFORE VENT CAP IS INSTALLED.
 5. SEAL AROUND SHOWER WITH SILICONE.
 4. USE SMOOTH PLUMBERS PUTTY 167459-01-000 TO SEAL STRAINER (0.2 PER STRAINER).
 3. ALL PIPE AND FITTINGS TO BE ASSEMBLED WITH SOLVENT 004020-01-000 (USA), 004020-02-000 (CAN)
 2. SLOPE OF TRAP ARM MUST BE 6 PER 305 mm.
 1. SLOPE OF HORIZONTAL PIPING TO BE MINIMUM OF 3 PER 305 mm.

FOR DRAINAGE CALLOUTS SEE DWG NO 116229-01-000

		COPYRIGHT 2012 WINNEBAGO INDUSTRIES, INC.	
DFT-ORIG	ORIG. DATE	ALL DIMENSIONS ARE IN MILLIMETERS	
CHKR			
P.E.			
M.E.	FIRST USED	13 R42GD	
DSNR			
UNSPECIFIED TOLERANCES ARE:		MATERIAL:	
WHOLE DIM (X)	: 3		
ONE-PLACE (X.X)	: 1.5		
TWO-PLACE (X.XX)	: 0.50		
ANGLE	: 1°		
THIRD ANGLE PROJECTION			
DO NOT SCALE DRAWING		REFER TO ES0018 FOR FASTENER TIGHTENING GUIDELINES	
TITLE: DRAINAGE SYSTEM INSTL			
SHEET 1 OF 4	PART NO	180798	REV
REF:	1	24-Jul-2012	



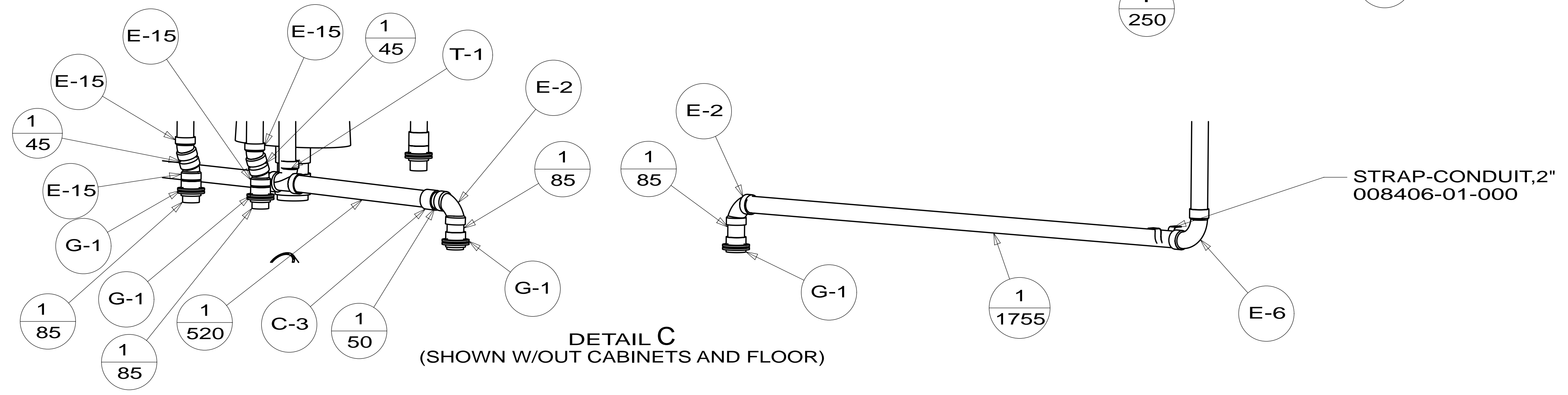
- SINK-GALLEY 180855-01-CHT
- STRAINER 092303-01-000 (2) 4
- NUT 130403-01-000
- WASHER-RUBBER 127440-02-CHT
- ANGLE-W/SLOTS 140002-01-CHT (10)

TAIL PIECE 011069-05-000

- W-2 215
- WASTE-CONTINUOUS 011091-04-000 214
- ARM-WASTE 126588-03-000 215 214
- P-1 1B1
- P-3 265
- A-15 1B1

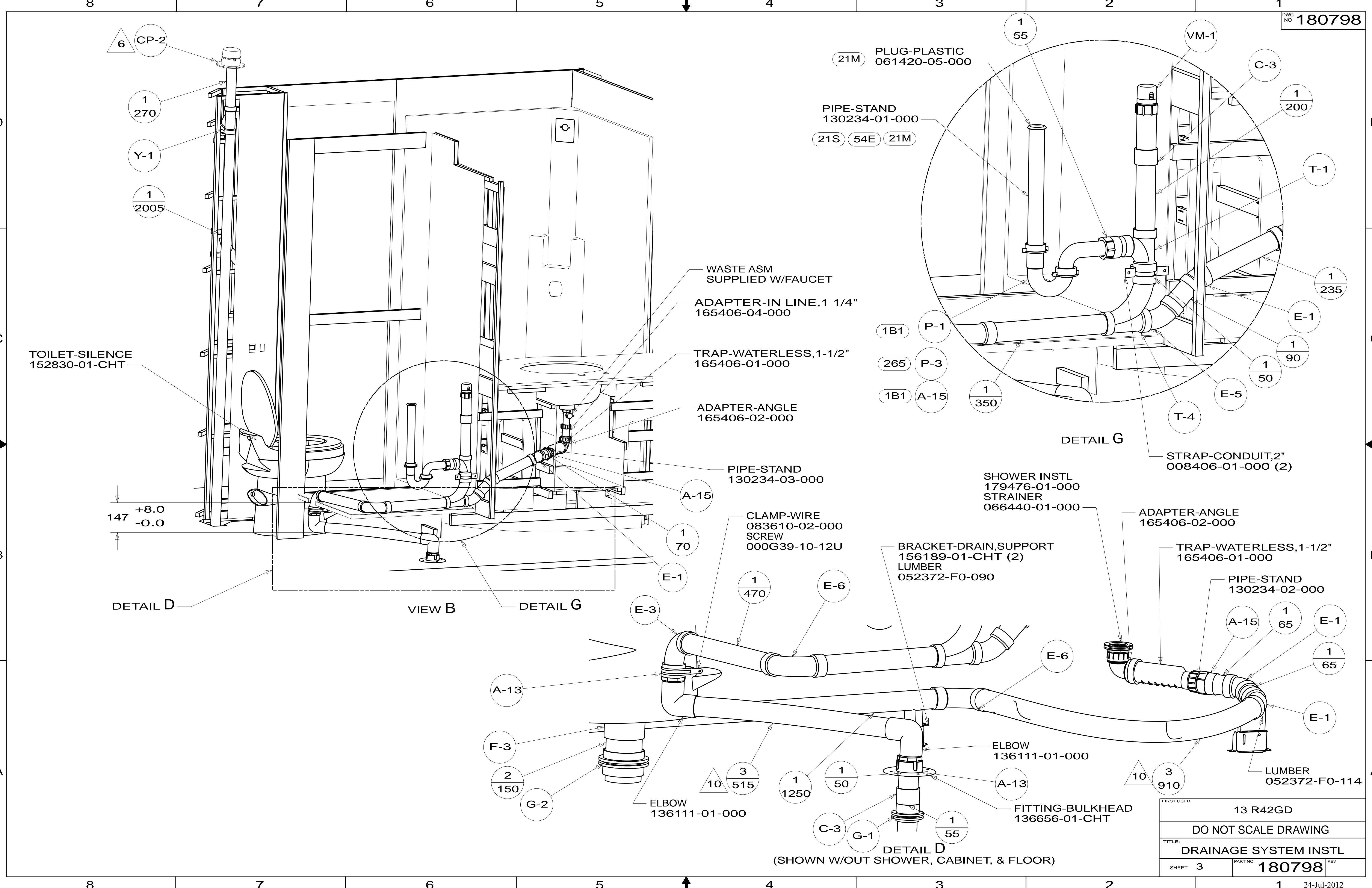
VIEW A

DETAIL C



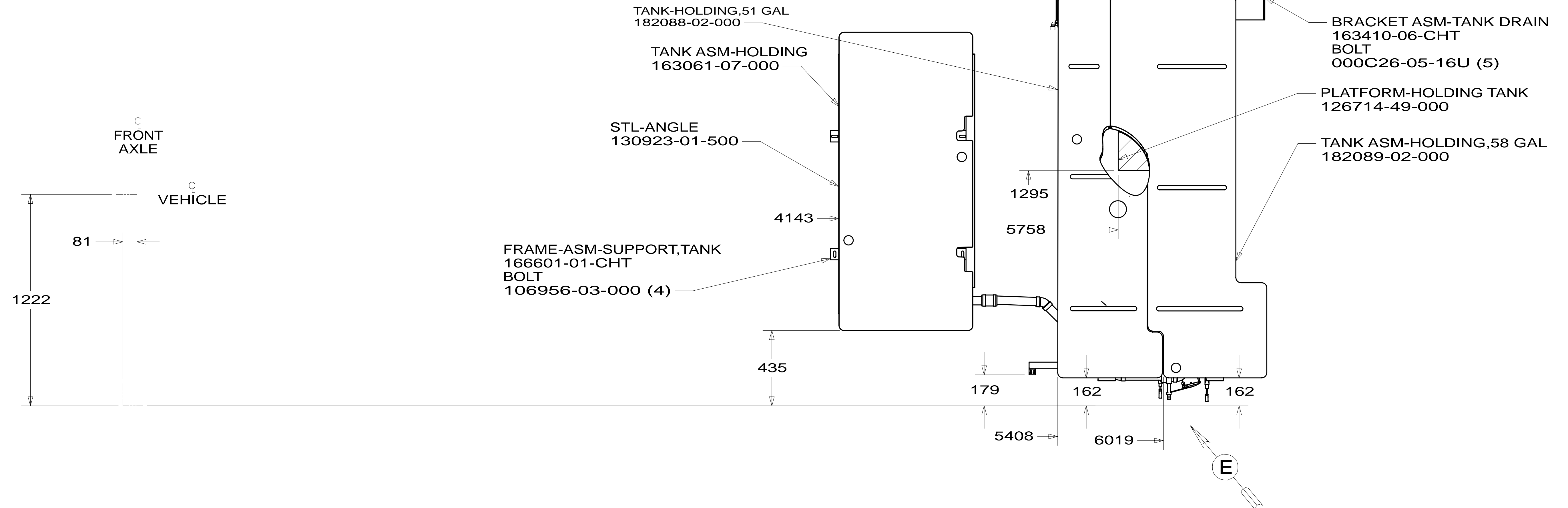
DETAIL C (SHOWN W/OUT CABINETS AND FLOOR)

FIRST USED	13 R42GD	
DO NOT SCALE DRAWING		
TITLE: DRAINAGE SYSTEM INSTL		
SHEET 2	PART NO 180798	REV

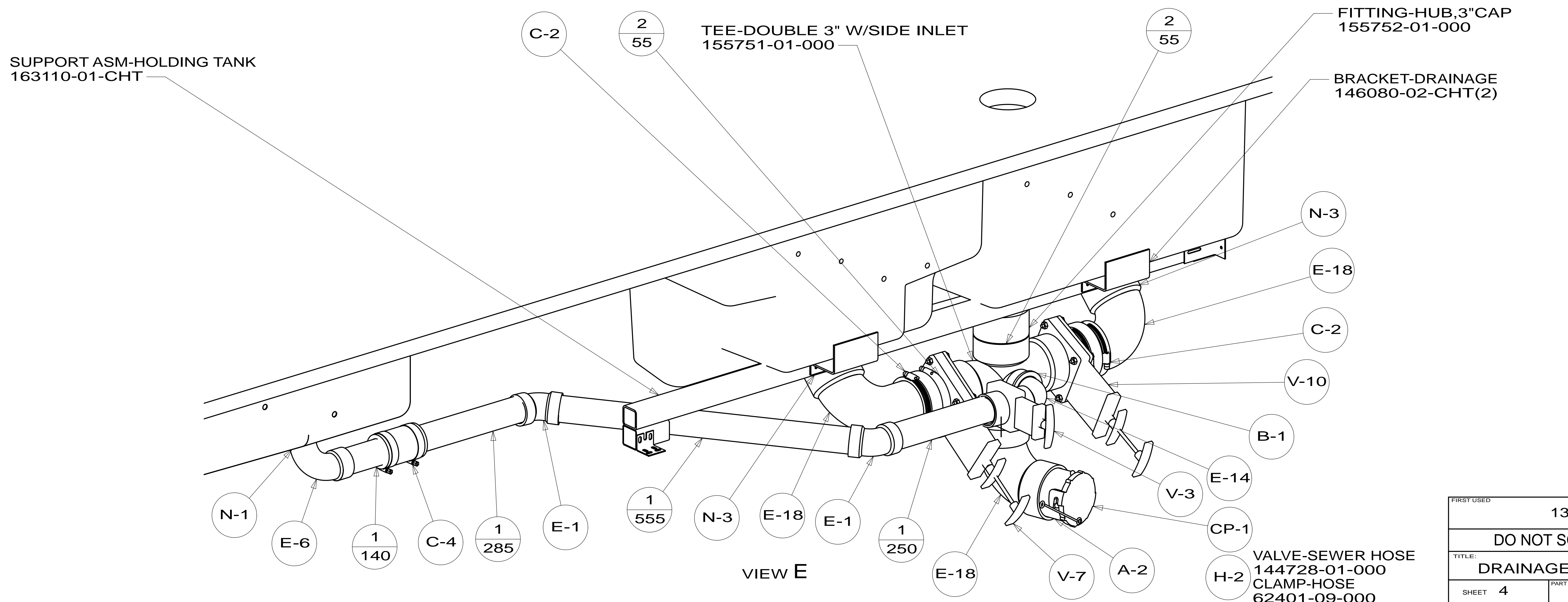


FIRST USED	13 R42GD
DO NOT SCALE DRAWING	
TITLE: DRAINAGE SYSTEM INSTL	
SHEET 3	PART NO 180798 REV

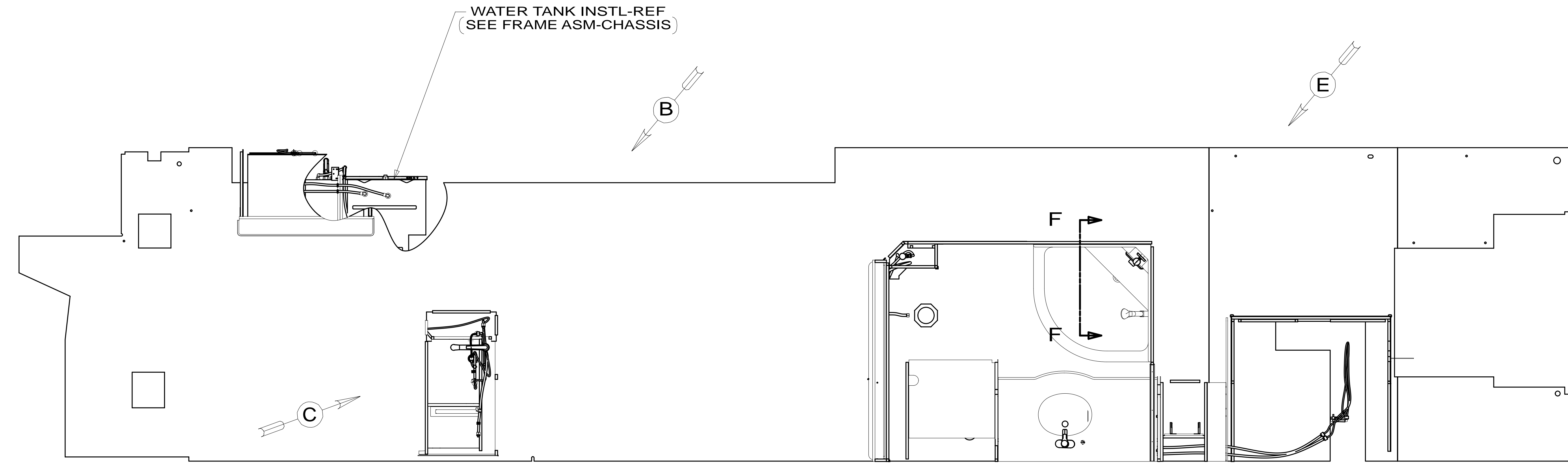
DETAIL D (SHOWN W/OUT SHOWER, CABINET, & FLOOR)



TOP VIEW SHOWING TANKS AND DRAINS



FIRST USED	13 R42GD	
DO NOT SCALE DRAWING		
TITLE:	DRAINAGE SYSTEM INSTL	
SHEET 4	PART NO	180798
	REV	



- NOTES:
- 1. PLASTIC FITTINGS TO BE SEALED WITH SEALANT 084456-01-000.
 - 2. TUBING TO BE INSTALLED WITH SUFFICIENT SLOPE TO PROVIDE DRAINAGE TO NEAREST VALVE.
 - 3. ALL TUBING TO BE SECURED AT 1200 INTERVALS MAXIMUM WITH CLAMP 010495-01-000 AND SCREW 000G67-10-12U OR EQUIVALENT.
 - 4. ADD TEFLON TAPE 010405-02-000.
 - 5. ADD PIPE WRAP (LADDER SCRAP 110157-02-000) INSULATION.
 - 6. LABEL HOT AND COLD SUPPLY TUBES AND TAPE FITTING TO TUBE BEFORE CABINET SET TO PREVENT MOVEMENT.
 - 7. ALL CRIMP FITTINGS TO PEX TUBING REQUIRE 5/8" CLAMP 140171-04-000.
 - 8. ALL CRIMP FITTINGS TO PEX TUBING REQUIRE 1/2" CLAMP 140171-03-000.
 - 9. REQUIRES 5 GALLONS OF 182955-01-000 ANTIFREEZE FOR WINTERIZATION.
 - 10. VALVE MUST REMAIN OPEN AFTER WATER TEST.
 - 11. INSTALL FAUCET WITHOUT BASEPLATE.

- 21S WASHER & DRYER-PAIR
- 21M WASHER/DRYER PREP
- 214 DISHWASHER-DRAWER STYLE
- 215 DISHWASHER WITHOUT
- 505 HOSE REEL-WATER,POWERED

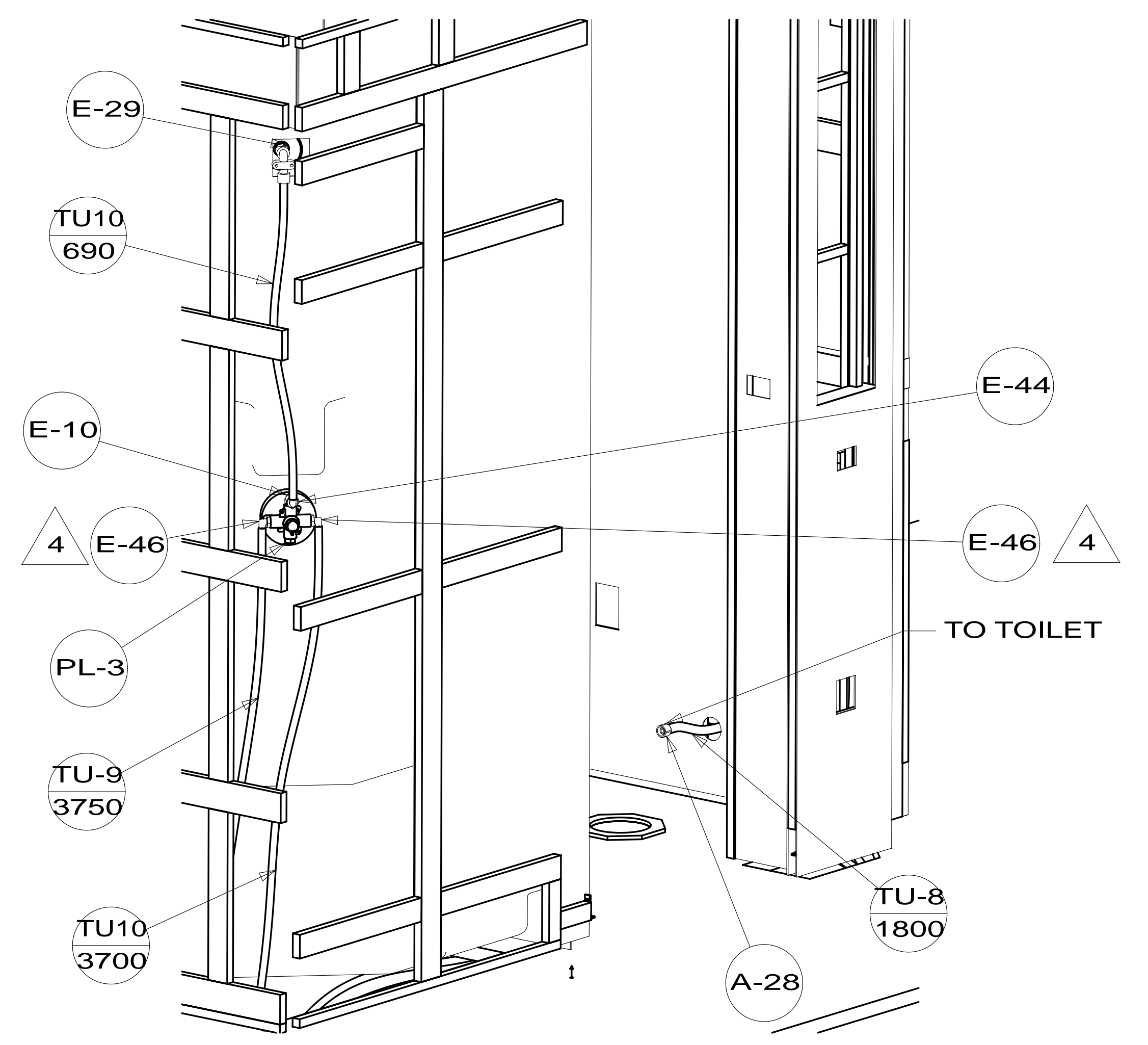
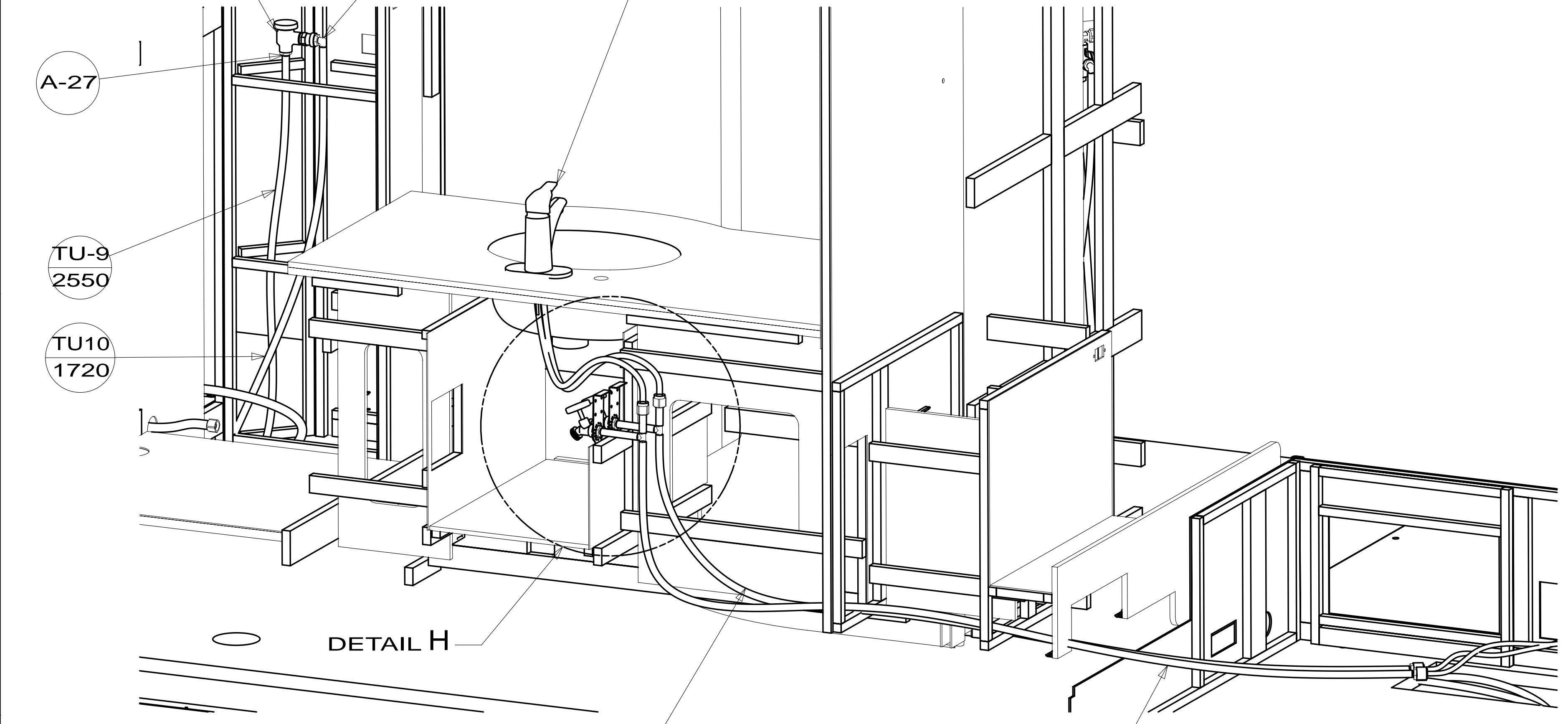
FOR WATER CALLOUTS SEE DWG NO 116230-01-000

		COPYRIGHT 2013 WINNEBAGO INDUSTRIES, INC.	
DFT-ORIG	ORIG. DATE	ALL DIMENSIONS ARE IN MILLIMETERS	
CHKR			
P.E.			
M.E.	FIRST USED		
DSNR		13 R42GD	
UNSPECIFIED TOLERANCES ARE:		MATERIAL:	
WHOLE DIM (X)	: 3		
ONE-PLACE (X.X)	: 1.5		
TWO-PLACE (X.XX)	: 0.50		
ANGLE	: 1°		
THIRD ANGLE PROJECTION			
DO NOT SCALE DRAWING		REFER TO ES0018 FOR FASTENER TIGHTENING GUIDELINES	
TITLE: WATER SYSTEM INSTL			
SHEET 1 OF 4	PART NO 180801	REV	
REF:	1	01-Feb-2013	

* 180801 * A

BREAKER-VACUUM
125697-04-000
CHECK VALVE
125697-03-000

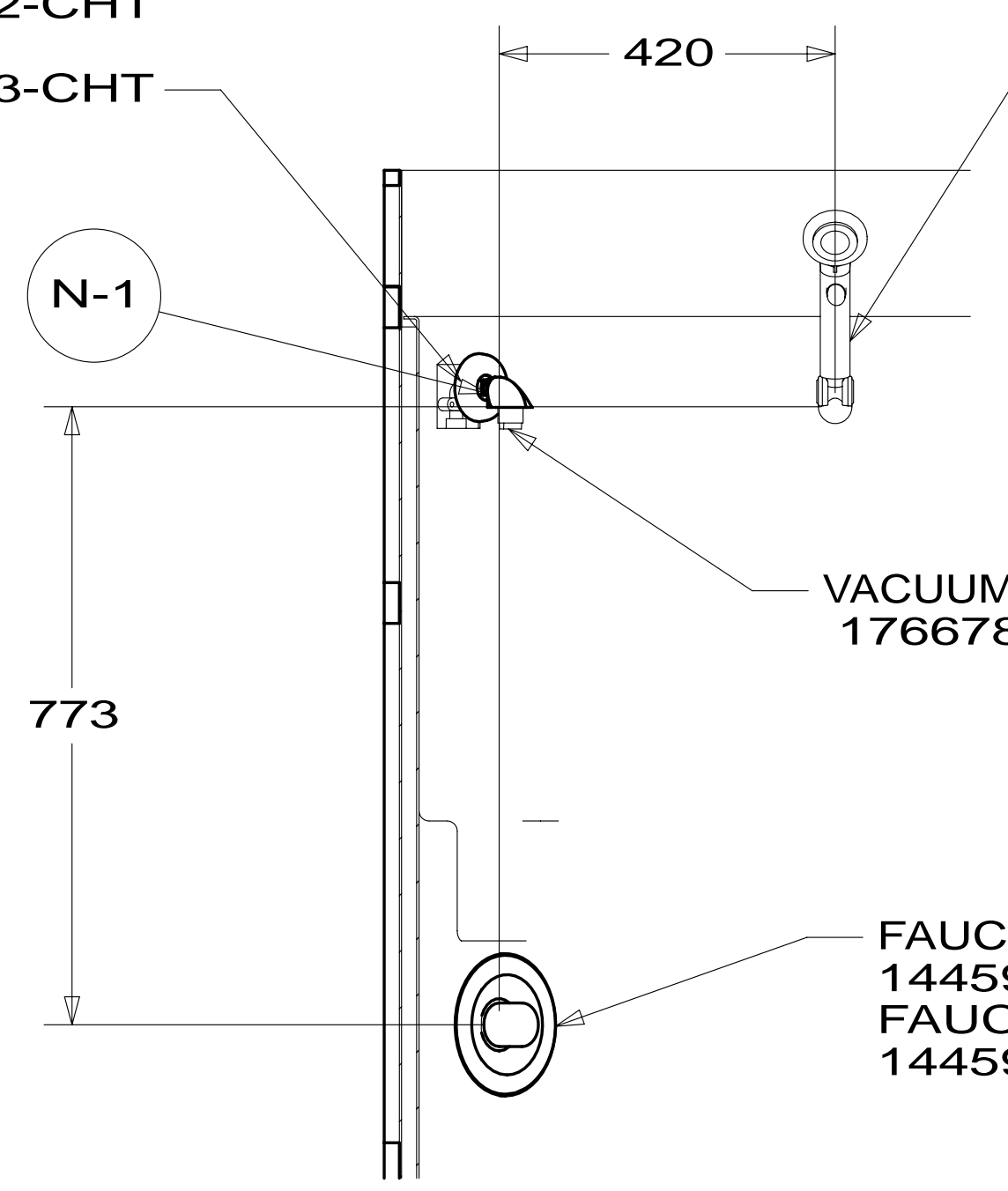
FAUCET
178237-01-CHT 11



BRACKET-SHOWER HEAD
143101-01-CHT
DROP ELL
135028-02-CHT
SPACER
130041-03-CHT

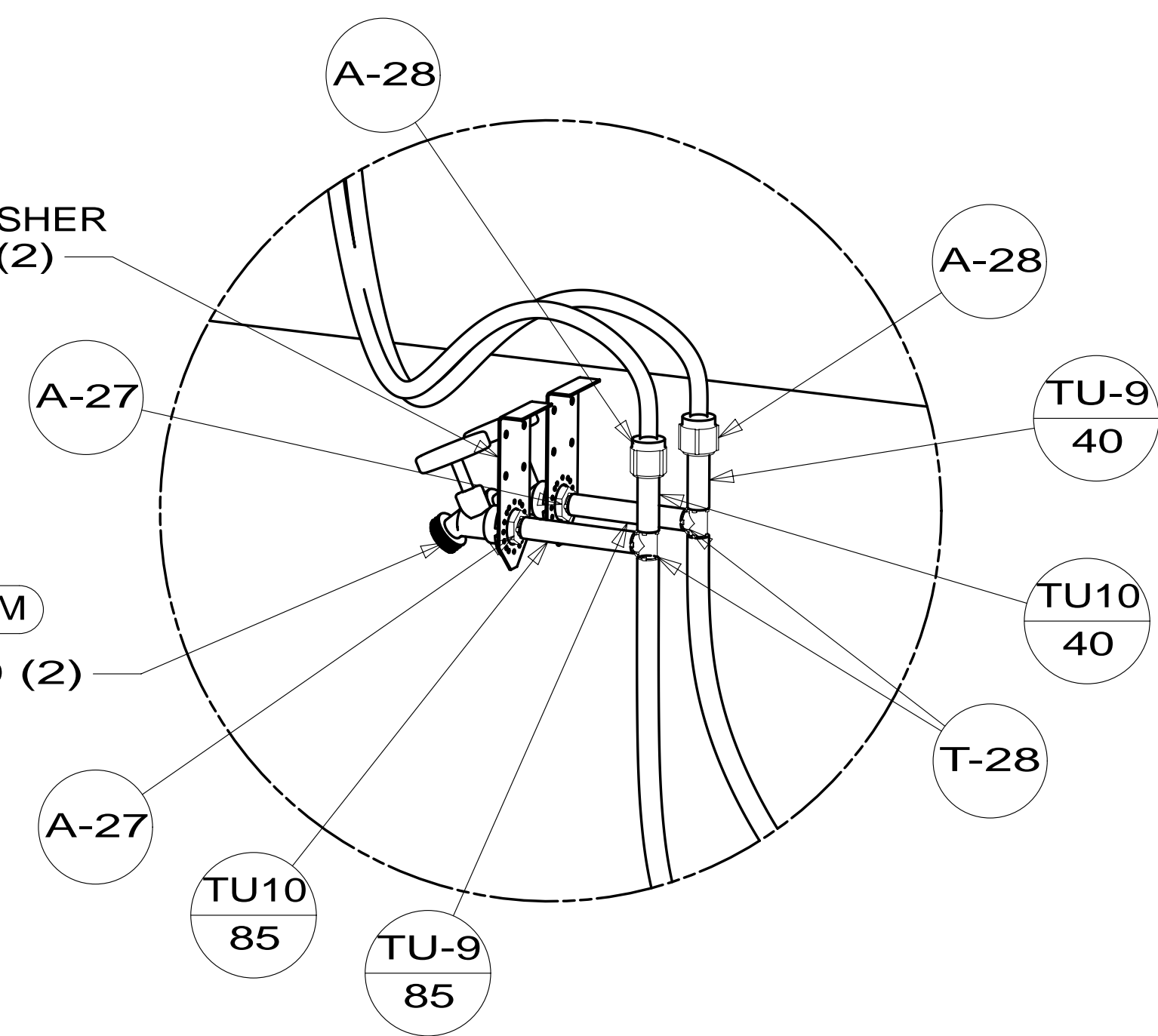
VIEW A

SHOWER-HAND HELD
176668-01-CHT

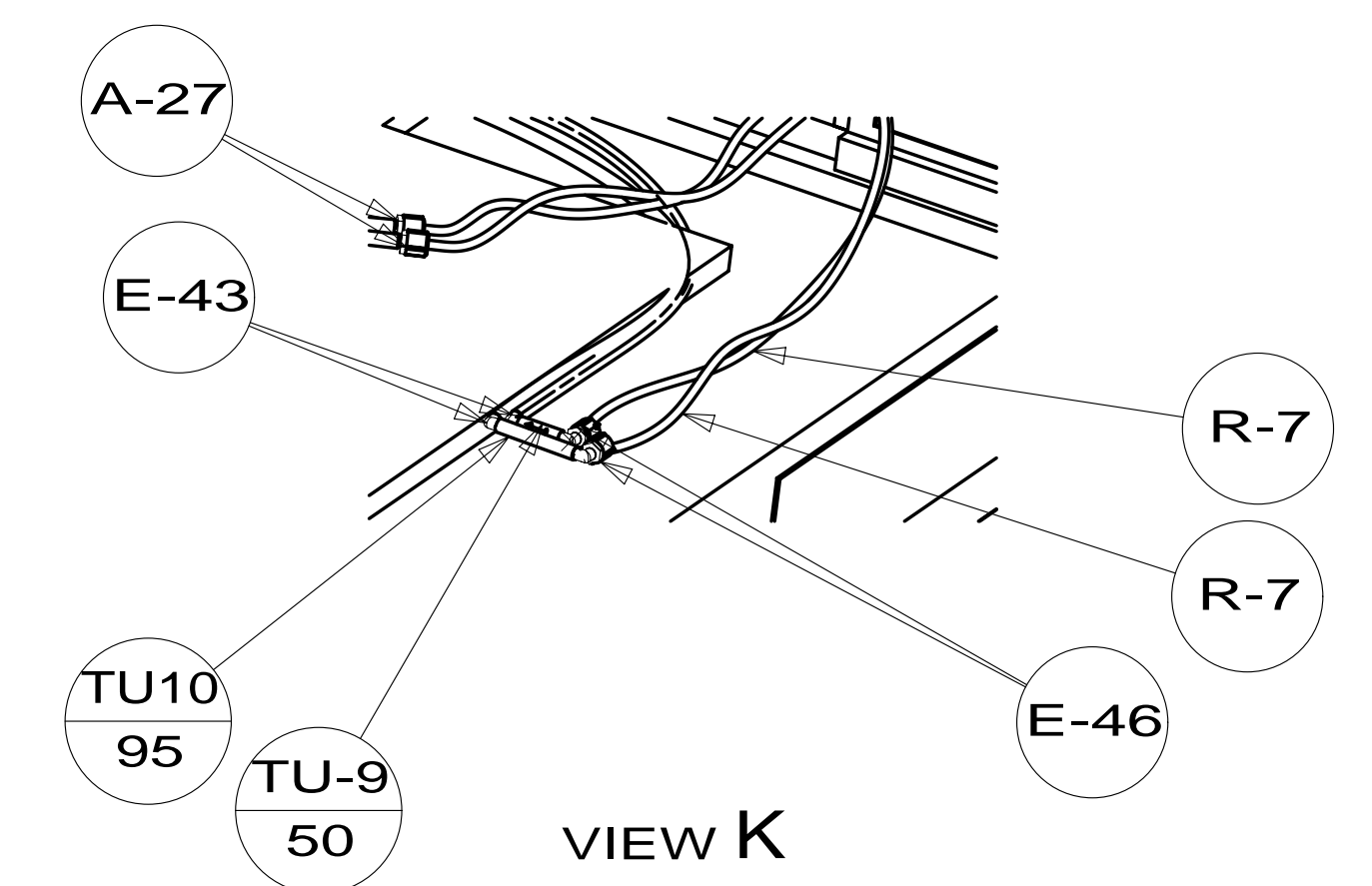


BRACKET-FAUCET, WASHER
134472-06-CHT (2)

FAUCET 21S 21M
098419-01-000 (2)



VIEW E



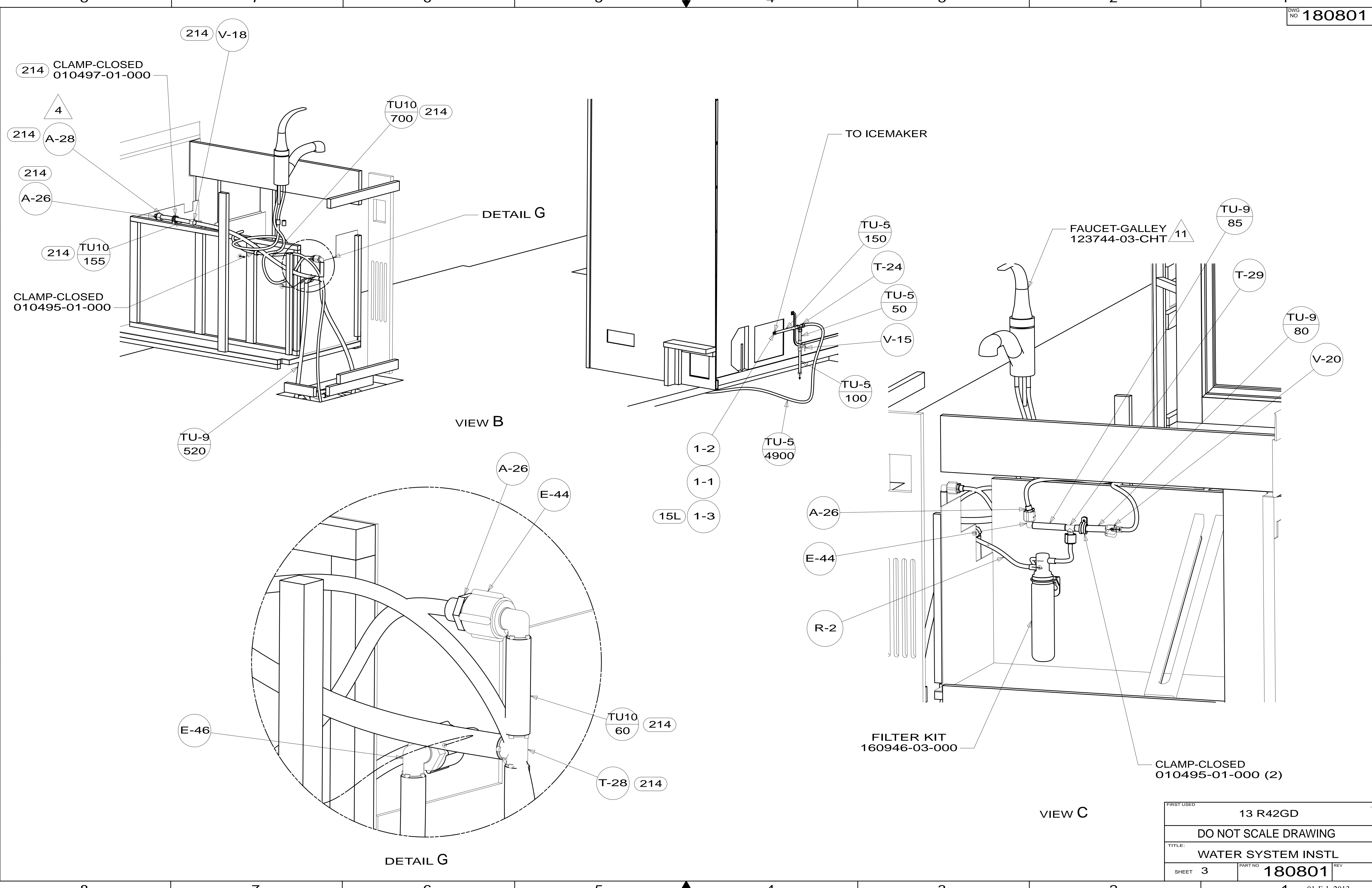
VIEW K

SECTION F-F
(ROTATED)

DETAIL H
(SHOWN W/OUT CABINETS)

FIRST USED	13 R42GD
TITLE:	DO NOT SCALE DRAWING
	WATER SYSTEM INSTL
SHEET 2	PART NO 180801 REV
	01-Feb-2013

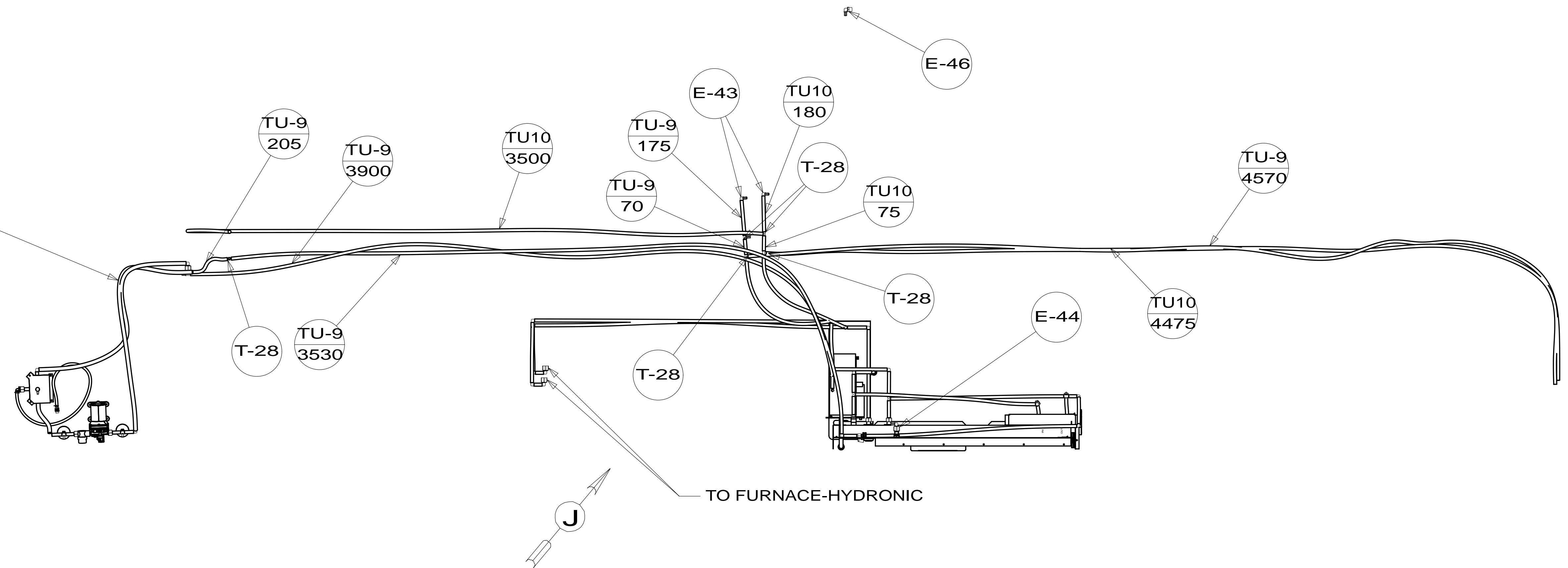
* 180801 A



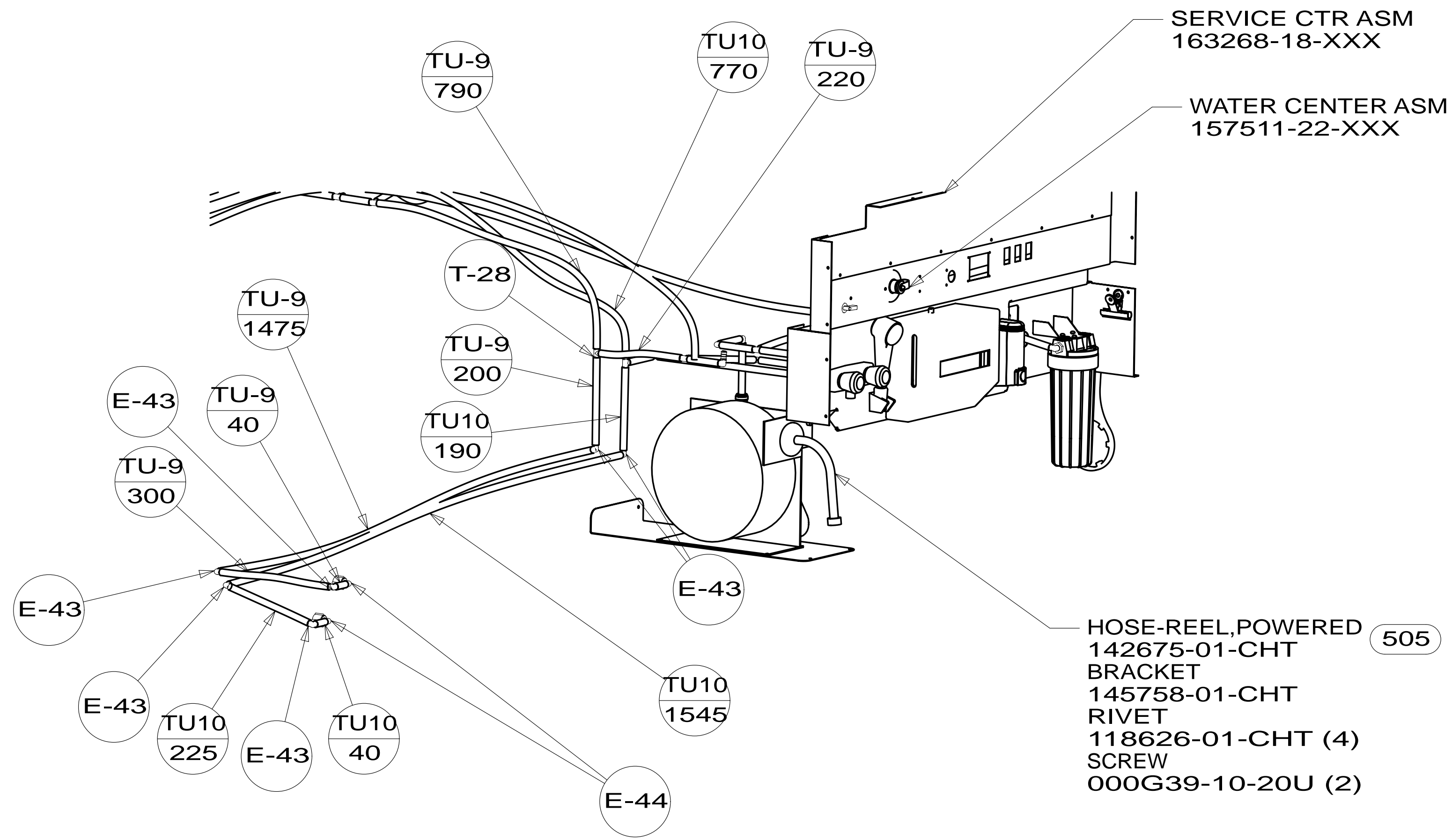
FIRST USED	13 R42GD		
TITLE:	DO NOT SCALE DRAWING		
	WATER SYSTEM INSTL		
SHEET 3	PART NO	180801	REV
			01-Feb-2013

* 180801 A *

WATER PUMP CENTER ASM
182945-01-XXX



SHOWING LINES UNDER FLOOR



VIEW J

FIRST USED	13 R42GD	
TITLE:	DO NOT SCALE DRAWING	
	WATER SYSTEM INSTL	
SHEET 4	PART NO 180801	REV
		01-Feb-2013

* 180801