

1B1 CODES/STANDARDS USA

265 CODES/STANDARDS-CSA/CMVSS

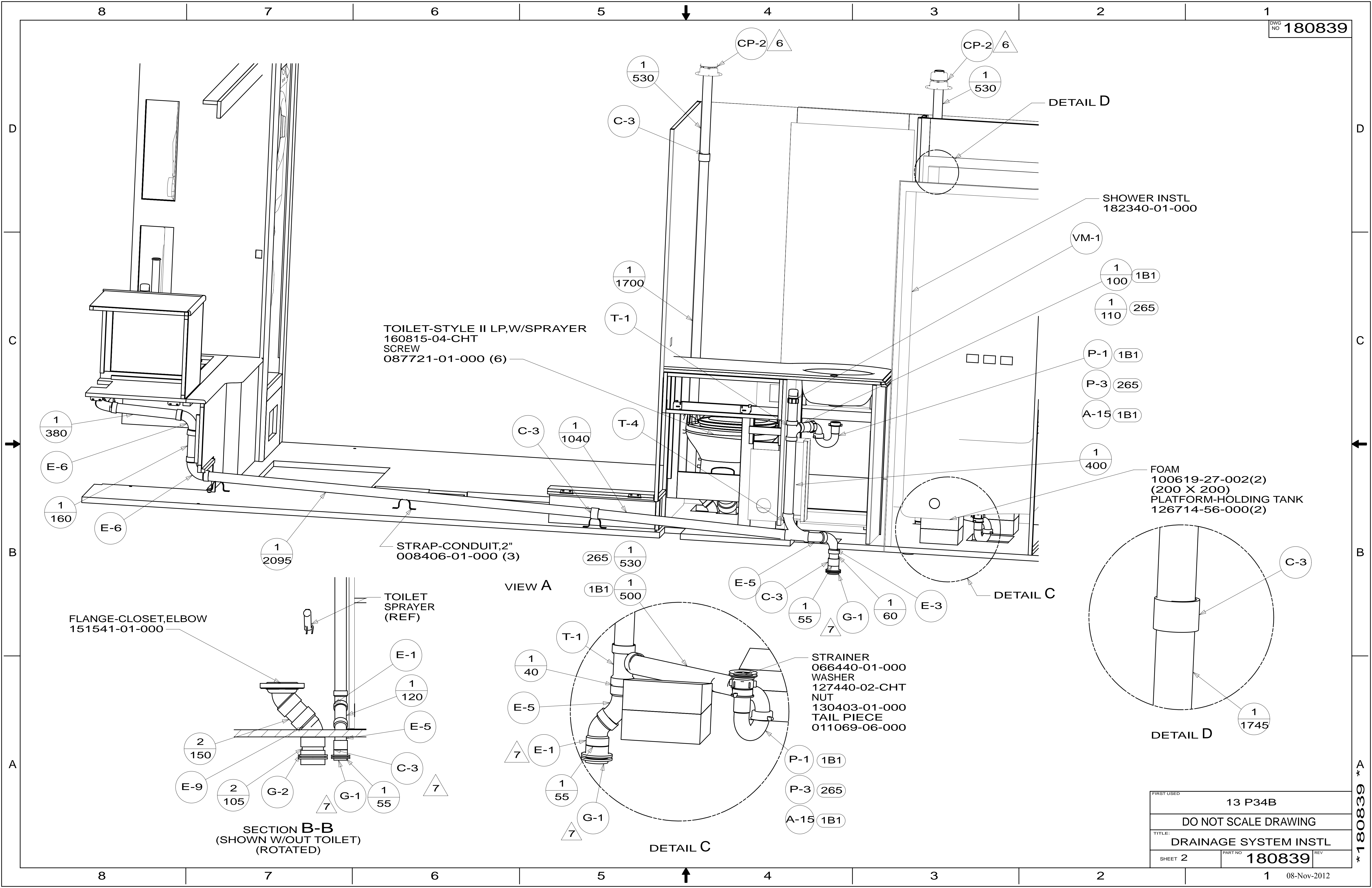
9. SEE DRAWING 061607 FOR INSTALLATION OF GROMMETS.
8. SECURE DRAINAGE PIPES TO CABINET USING WIRE TIE 108046-02-000, AND SCREW 000G67-10-12U AT INTERVALS OF NOT OF NOT MORE THAN 4 FEET APART.
7. SECURE VENT PIPE TO GROMMET WITH CLAMP 062401-02-000.
6. VENT PIPE MUST PROJECT 51 MIN AND 64 MAX ABOVE ROOF FOR PROPER FIT AND FUNCTION. ADD S-1 (116666-01-CHT SEAL-VENT PIPE) AROUND PIPE ON ROOF BEFORE VENT CAP IS INSTALLED.
5. SEAL AROUND SHOWER WITH SILICONE.
4. USE SMOOTH PLUMBERS PUTTY 167459-01-000 TO SEAL STRAINER (0.2 PER STRAINER).
3. ALL PIPE AND FITTINGS TO BE ASSEMBLED WITH SOLVENT 004020-01-000 (USA), 004020-02-000 (CAN)
2. SLOPE OF TRAP ARM MUST BE 6 PER 305 mm.
1. SLOPE OF HORIZONTAL PIPING TO BE MINIMUM OF 3 PER 305 mm.

NOTES:

| | | | |
|------------------------------|------------|---|-----|
| | | COPYRIGHT 2012 WINNEBAGO INDUSTRIES, INC. | |
| DFT-ORIG | ORIG. DATE | ALL DIMENSIONS ARE IN MILLIMETERS | |
| CHKR | | FIRST USED | |
| P.E. | | 13 P34B | |
| M.E. | | UNSPECIFIED TOLERANCES ARE: | |
| DSNR | | WHOLE DIM (X) : 3 ONE-PLACE (X.X) : 1.5 TWO-PLACE (X.XX) : 0.50 ANGLE : 1° | |
| THIRD ANGLE PROJECTION | | MATERIAL: | |
| DO NOT SCALE DRAWING | | REFER TO ES0018 FOR FASTENER TIGHTENING GUIDELINES | |
| TITLE: DRAINAGE SYSTEM INSTL | | | |
| SHEET 1 OF 4 | PART NO | 180839 | REV |
| REF: | 1 | 08-Nov-2012 | |

FOR DRAINAGE CALLOUTS SEE DWG NO 116229-01-000

* 180839 *



TOILET-STYLE II LP,W/SPRAYER
160815-04-CHT
SCREW
087721-01-000 (6)

SHOWER INSTL
182340-01-000

FOAM
100619-27-002(2)
(200 X 200)
PLATFORM-HOLDING TANK
126714-56-000(2)

STRAP-CONDUIT,2"
008406-01-000 (3)

FLANGE-CLOSET,ELBOW
151541-01-000

TOILET
SPRAYER
(REF)

STRAINER
066440-01-000
WASHER
127440-02-CHT
NUT
130403-01-000
TAIL PIECE
011069-06-000

SECTION B-B
(SHOWN W/OUT TOILET)
(ROTATED)

DETAIL C

| | |
|------------------------------|--------------------|
| FIRST USED | 13 P34B |
| DO NOT SCALE DRAWING | |
| TITLE: DRAINAGE SYSTEM INSTL | |
| SHEET 2 | PART NO 180839 REV |
| 08-Nov-2012 | |

* 180839 A

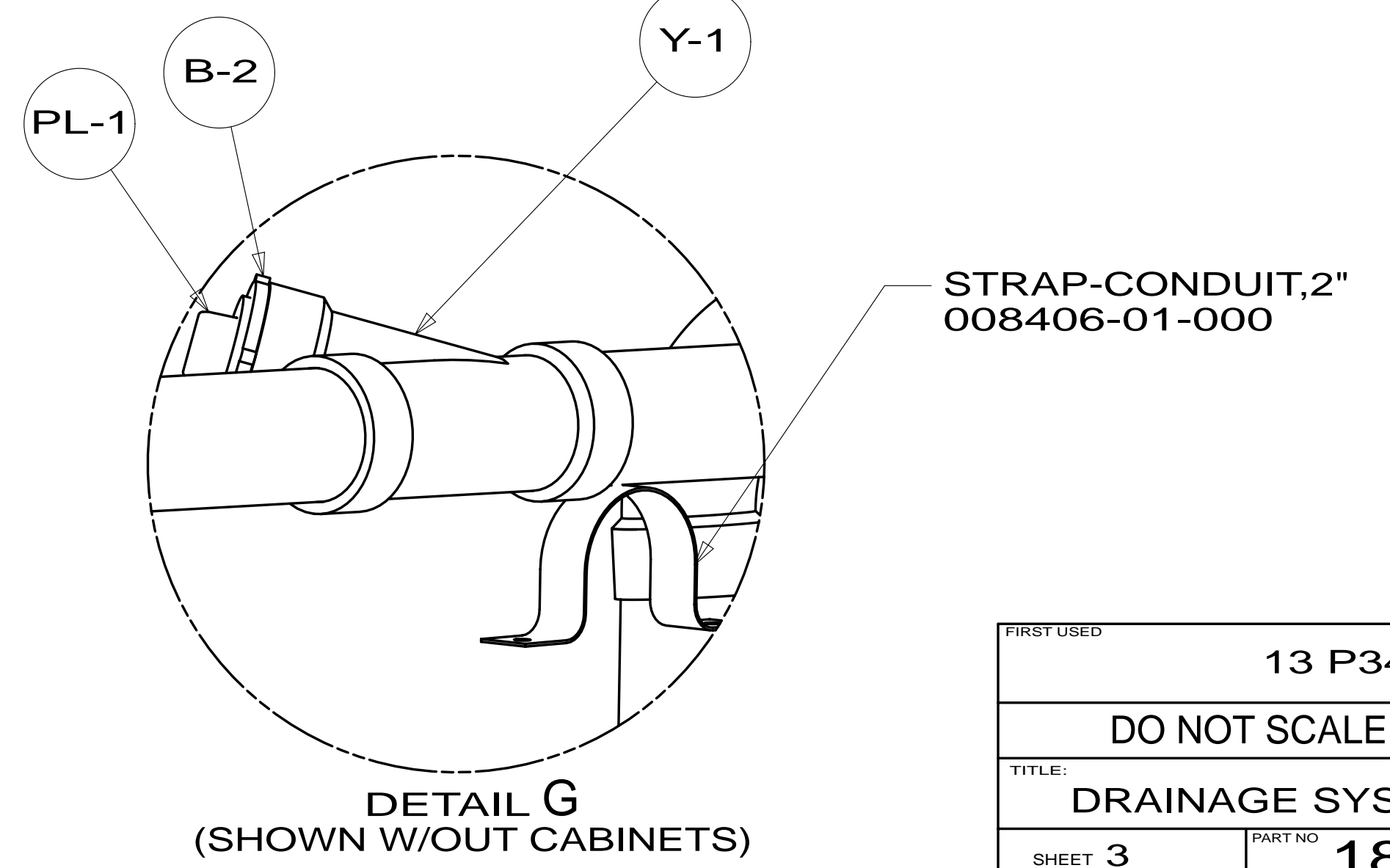
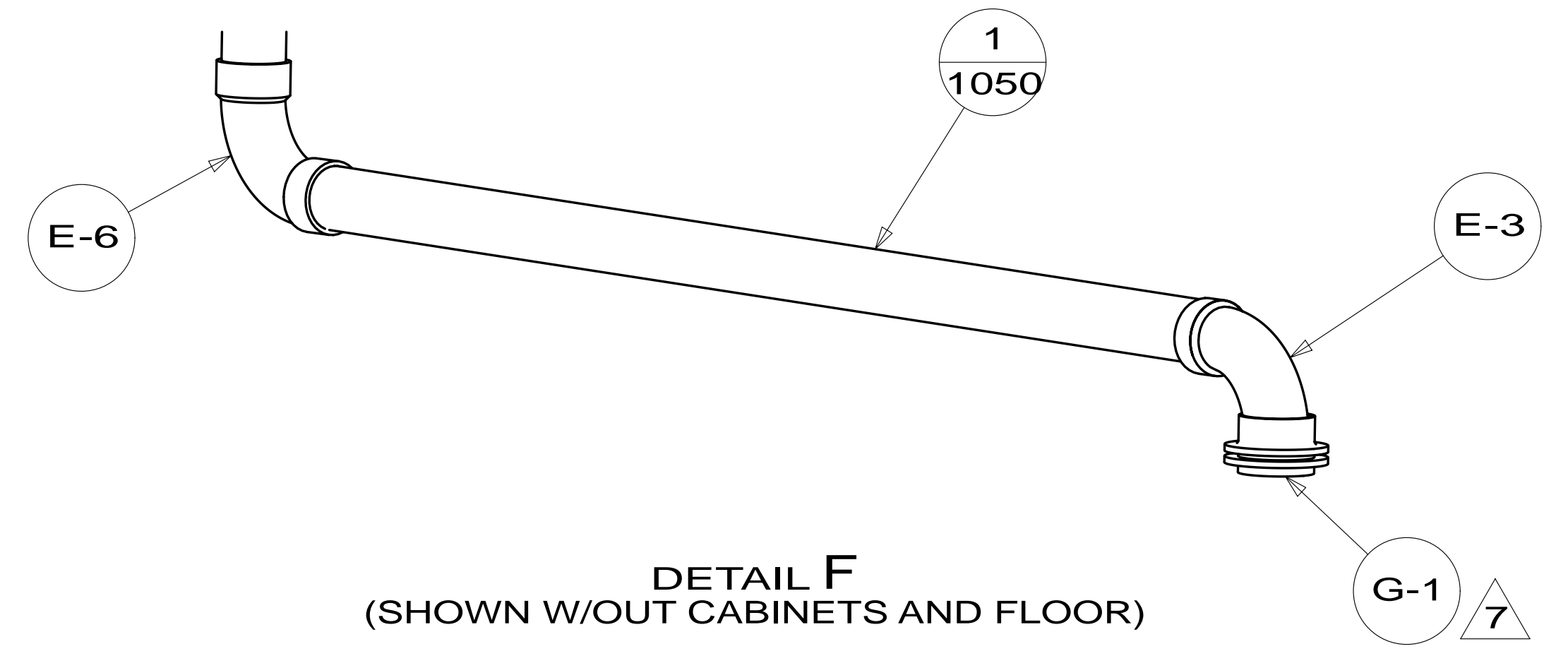
SINK-GALLEY, DBL
 184806-01-CHT
 STRAINER
 092303-01-000 (2)
 SEAL (A/R)
 WASHER
 127440-02-CHT (2)
 ANGLE-W/SLOT
 140002-01-CHT (10)

PIPE-STAND
 130234-01-000 (21M) (54E)
 PLUG-PLASTIC
 061420-12-000 (21M)

STRAP-CONDUIT, 2"
 008406-01-000

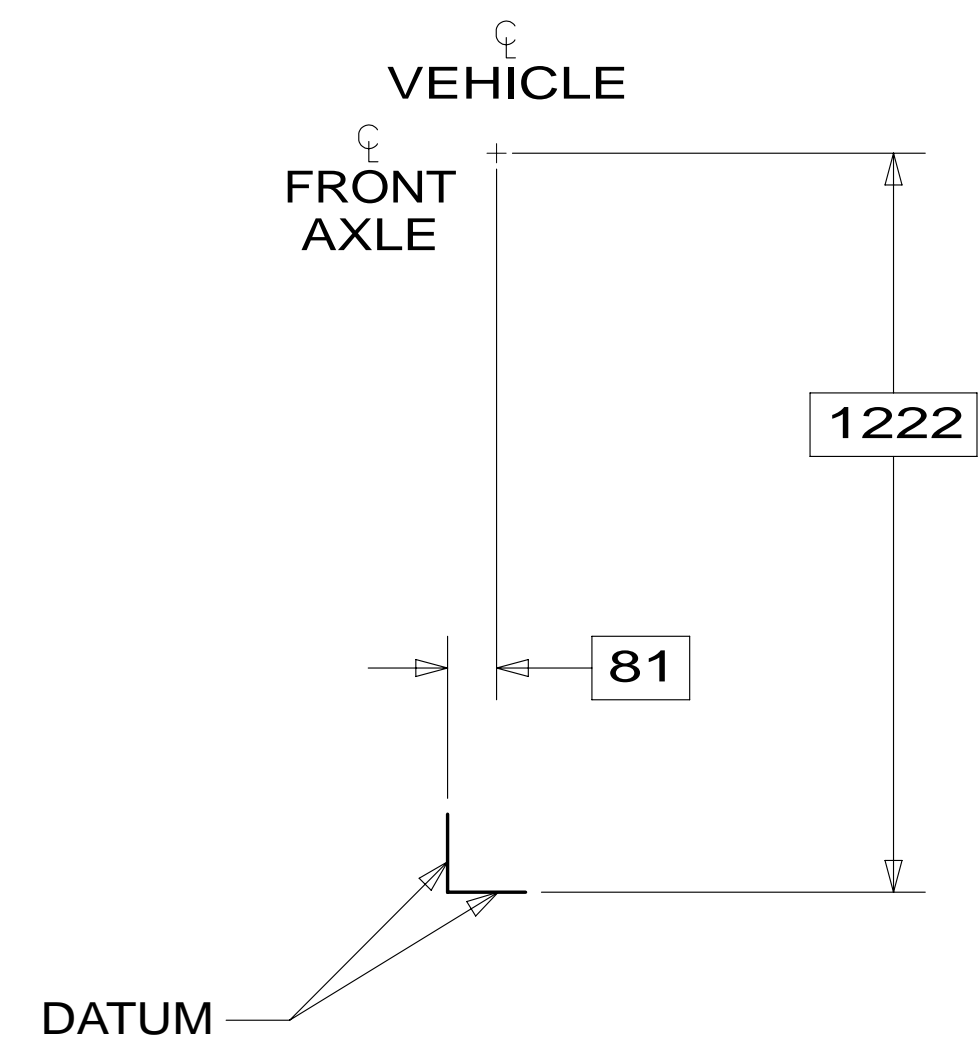


VIEW E



| | | |
|------------|-----------------------|-------------|
| FIRST USED | 13 P34B | |
| TITLE: | DO NOT SCALE DRAWING | |
| TITLE: | DRAINAGE SYSTEM INSTL | |
| SHEET 3 | PART NO 180839 | REV |
| | | 08-Nov-2012 |

* 180839 A *

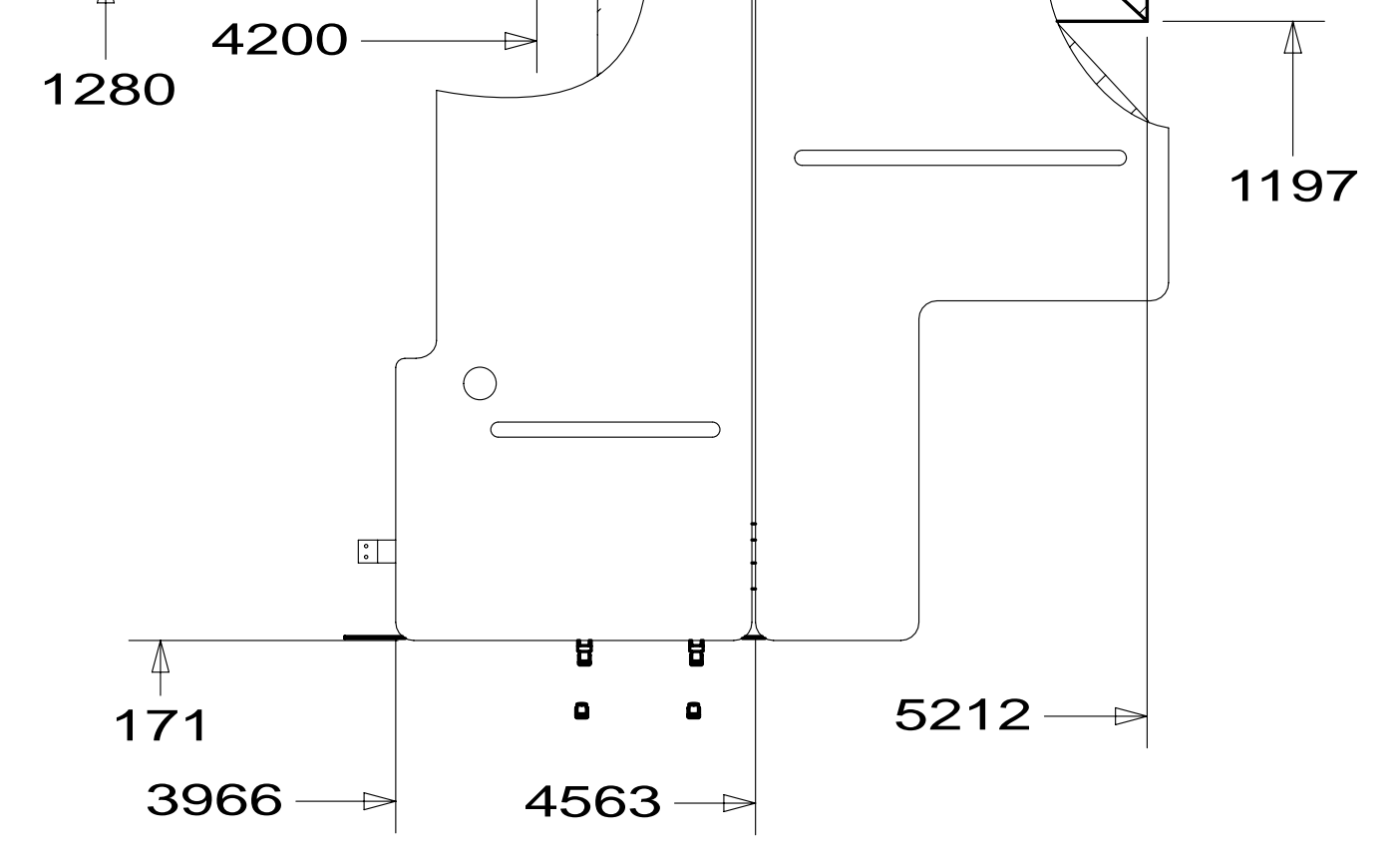


BRACKET ASM-TANK DRAIN
161759-07-CHT

TANK ASM-HOLDING
182576-03-000

TANK ASM-HOLDING
178217-04-000

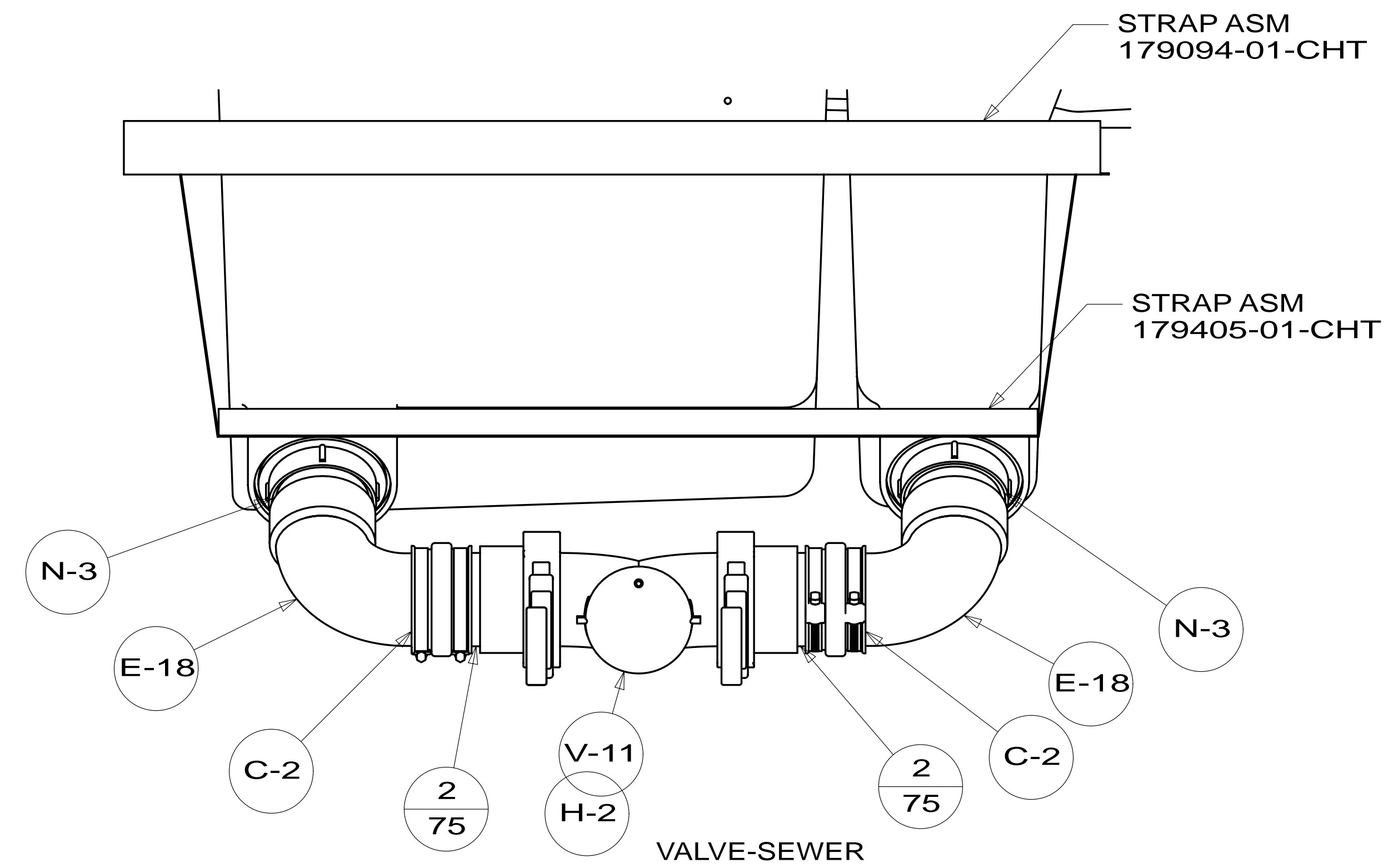
PLATFORM-HOLDING TANK
126714-17-000 (2)



TOP VIEW SHOWING ONLY DRAINS AND TANKS

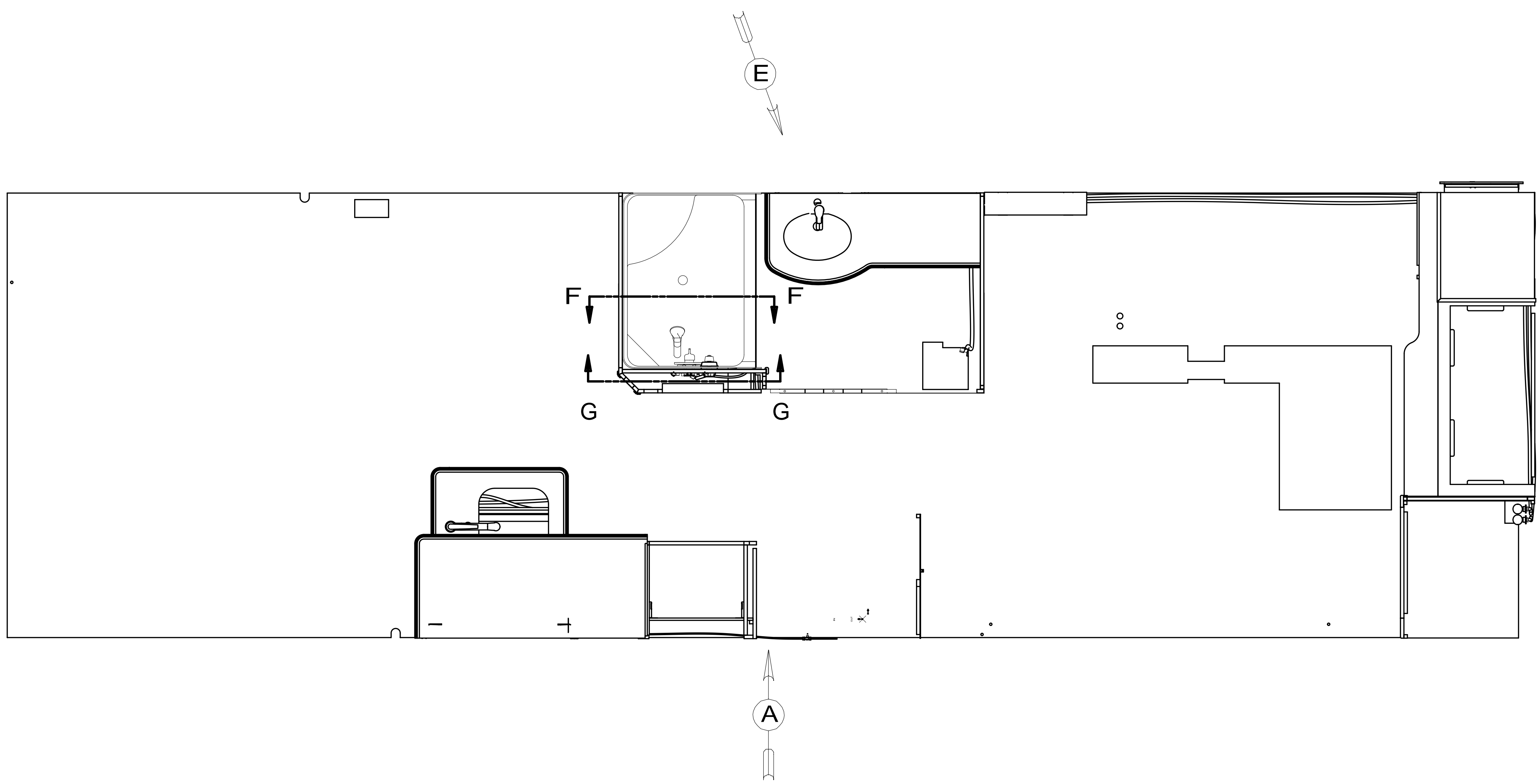
STRAP ASM
179094-01-CHT

STRAP ASM
179405-01-CHT



| | | |
|------------|-----------------------|-------------|
| FIRST USED | 13 P34B | |
| TITLE: | DO NOT SCALE DRAWING | |
| TITLE: | DRAINAGE SYSTEM INSTL | |
| SHEET 4 | PART NO | 180839 |
| | REV | |
| | | 08-Nov-2012 |

* 180839 A



- NOTES:
1. PLASTIC FITTINGS TO BE SEALED WITH SEALANT 084456-01-000.
 2. TUBING TO BE INSTALLED WITH SUFFICIENT SLOPE TO PROVIDE DRAINAGE TO NEAREST VALVE.
 3. ALL TUBING TO BE SECURED AT 1200 INTERVALS MAXIMUM WITH CLAMP 010495-01-000 AND SCREW 000G67-10-12U OR EQUIVALENT.
 4. ADD TEFLON TAPE 010405-02-000.
 5. ADD PIPE WRAP (LADDER SCRAP 110157-02-000) INSULATION.
 6. LABEL HOT AND COLD SUPPLY TUBES AND TAPE FITTING TO TUBE BEFORE CABINET SET TO PREVENT MOVEMENT.
 7. ALL CRIMP FITTINGS TO 5/8" PEX TUBING REQUIRE 5/8" CLAMP 140171-04-000.
 8. ALL CRIMP FITTINGS TO 1/2" PEX TUBING REQUIRE 1/2" CLAMP 140171-03-000.
 9. VALVE MUST REMAIN OPEN AFTER WATER TEST.
 10. INSTALL FAUCET WITHOUT BASEPLATE.

1DF EXT TV ENTERTAINMENT CENTER

| | | | |
|-----------------------------|------------|--|-----|
| | | COPYRIGHT 2013 WINNEBAGO INDUSTRIES, INC. | |
| DTR | ORIG. DATE | ALL DIMENSIONS ARE IN MILLIMETERS | |
| CHKR | | | |
| P.E. | | | |
| M.E. | FIRST USED | | |
| DSNR | | 13 P34B | |
| UNSPECIFIED TOLERANCES ARE: | | MATERIAL: | |
| WHOLE DIM (X) | : 3 | | |
| ONE-PLACE (X.X) | : 1.5 | | |
| TWO-PLACE (X.XX) | : 0.50 | | |
| ANGLE | : 1° | | |
| THIRD ANGLE PROJECTION | | | |
| DO NOT SCALE DRAWING | | REFER TO ES0018 FOR FASTENER TIGHTENING GUIDELINES | |
| TITLE: WATER SYSTEM INSTL | | | |
| SHEET 1 OF 4 | PART NO | 180841 | REV |
| REF: | 1 | 05-Mar-2013 | |

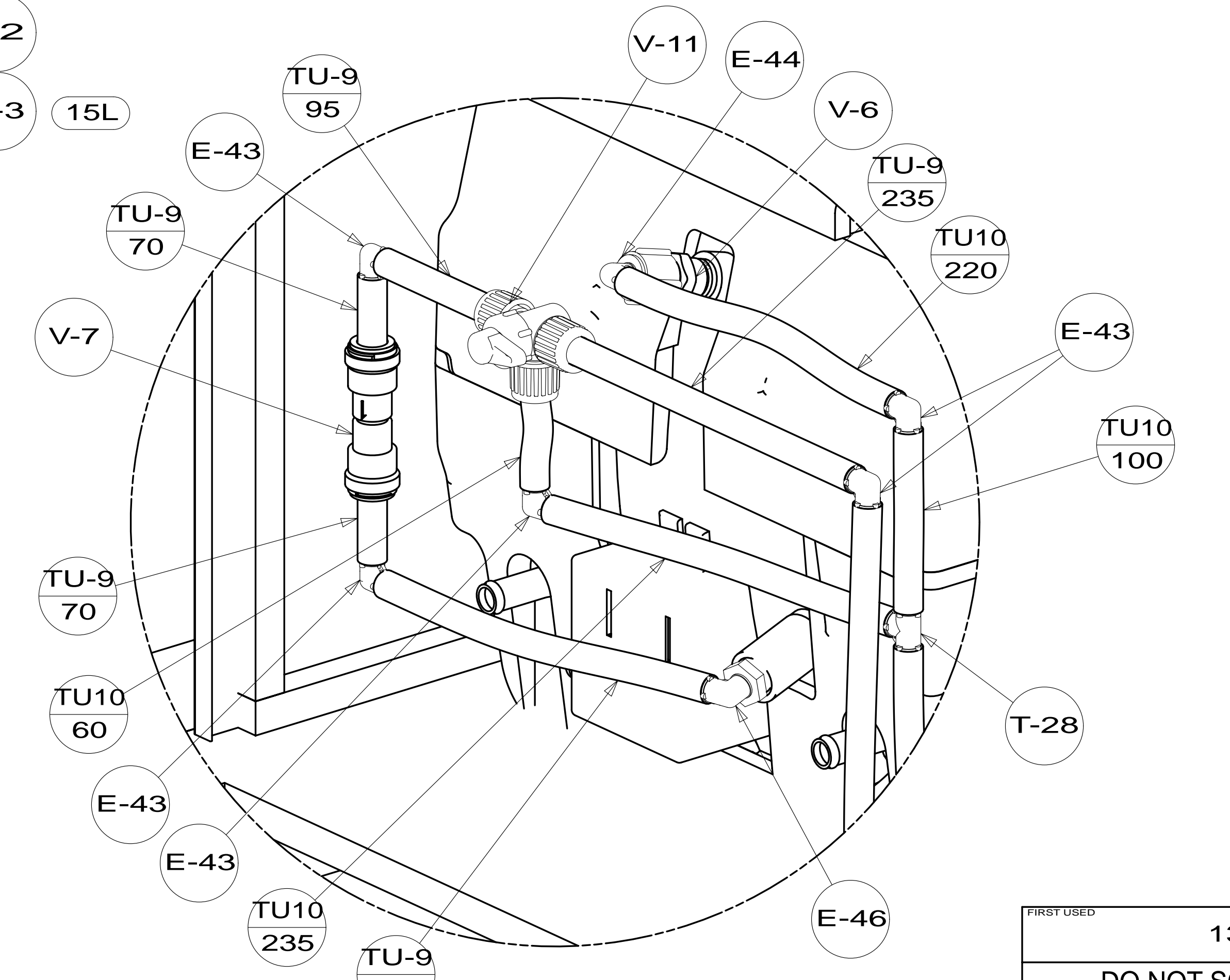
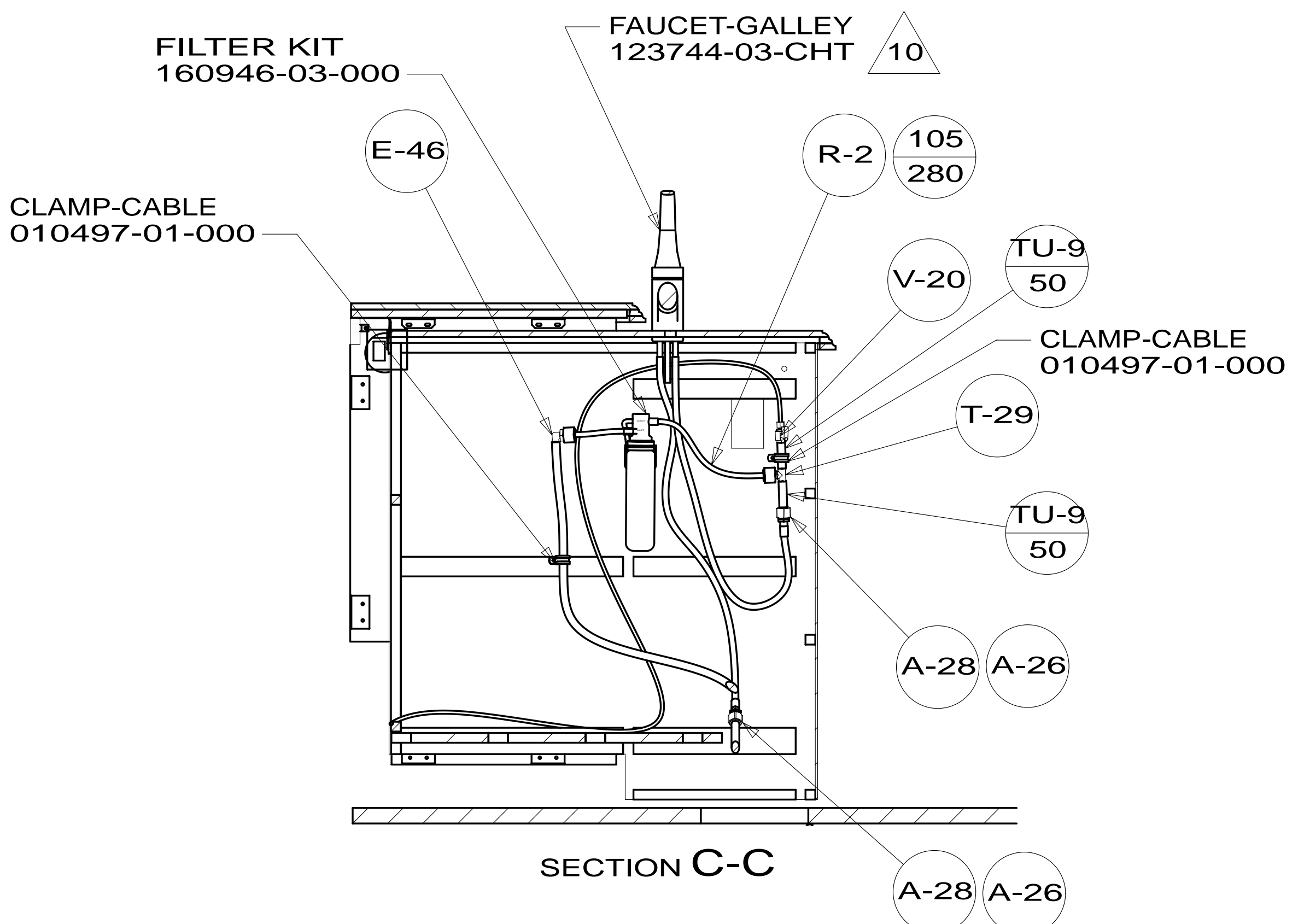
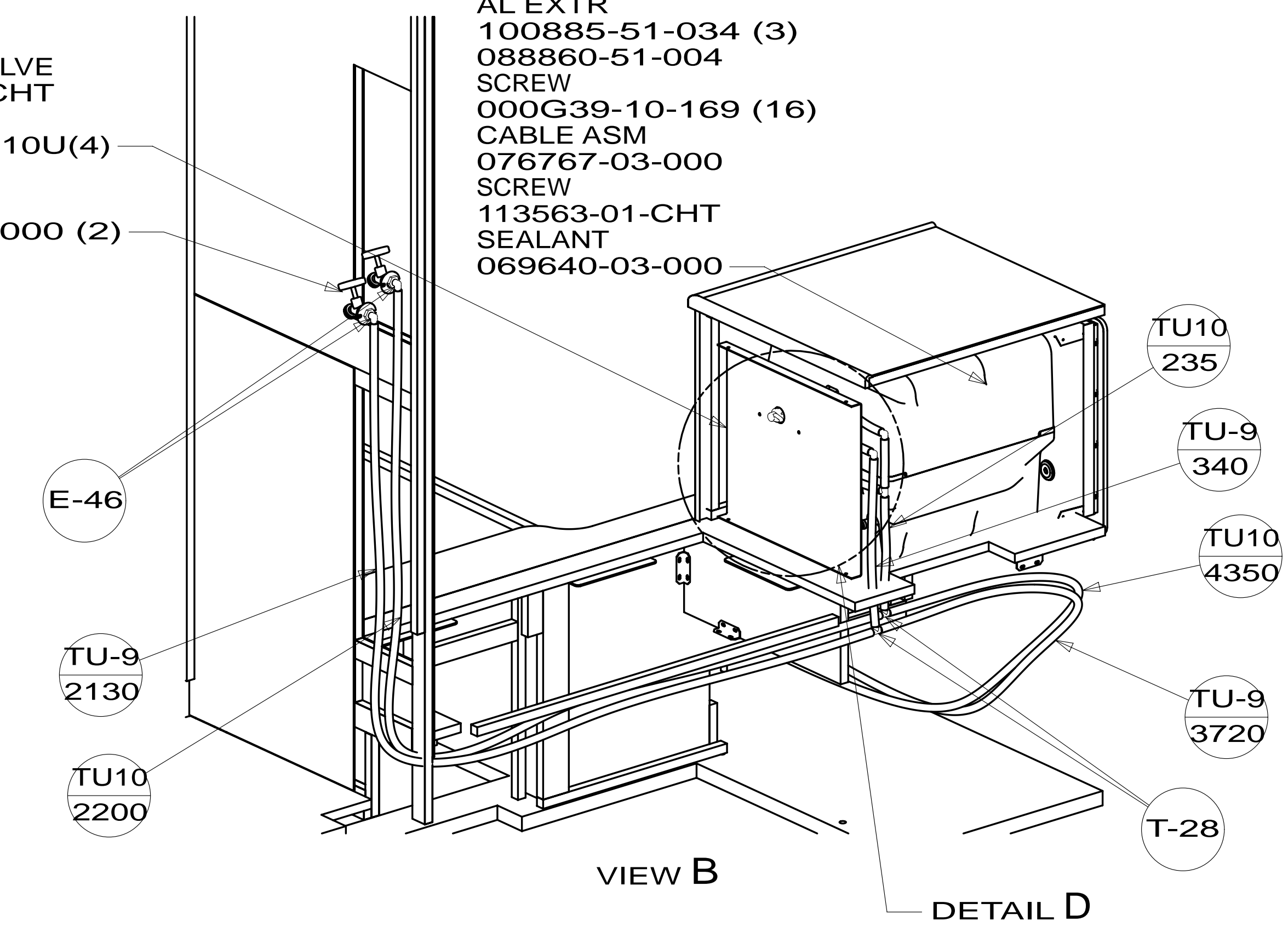
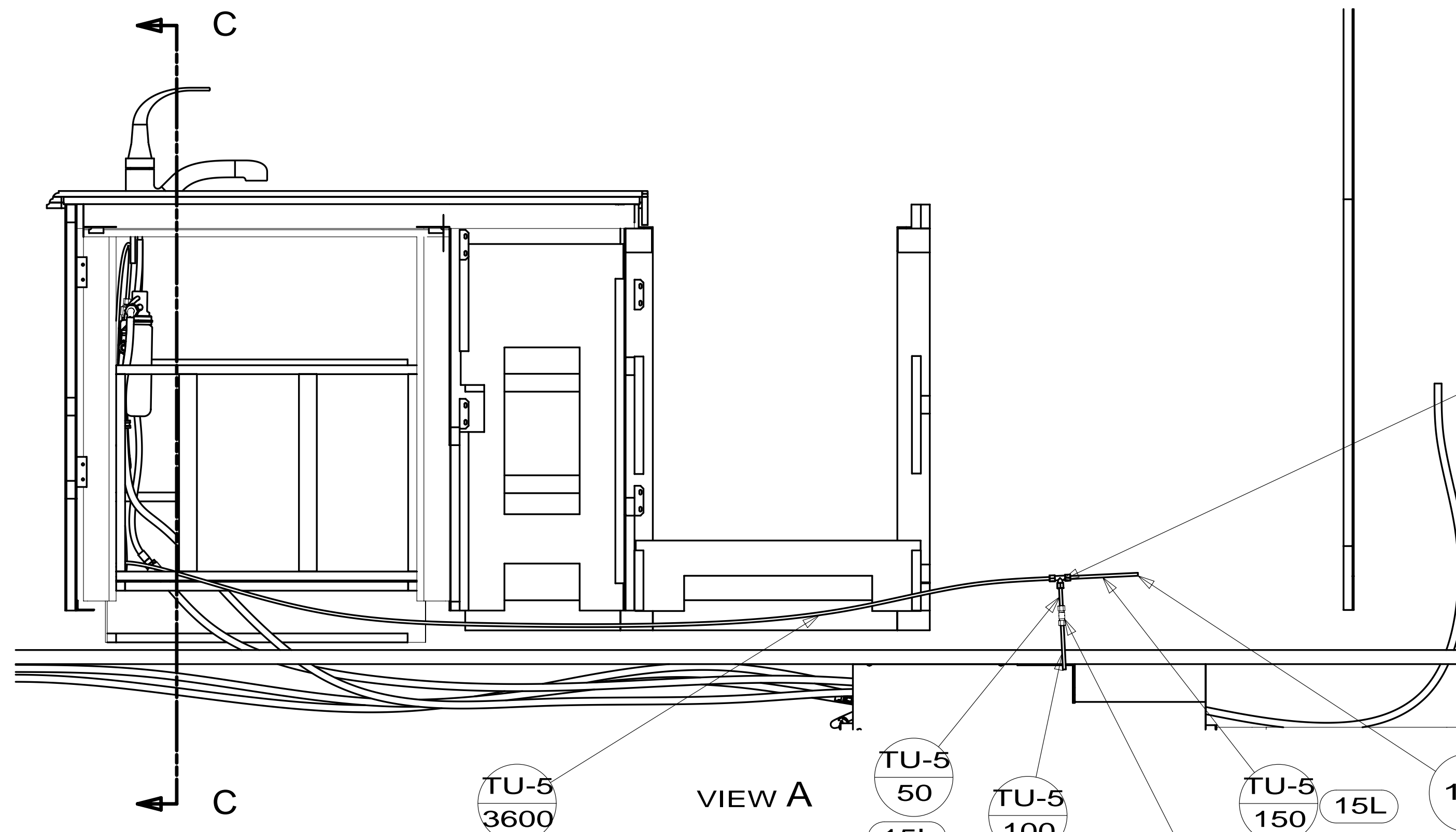
FOR WATER CALLOUTS SEE DWG NO 116230-01-000

* 180841 * A

- WATER HEATER
145541-01-000
- DOOR
125420-05-CHT
- AL EXTR
100885-51-034 (3)
- SCREW
088860-51-004
- SCREW
000G39-10-169 (16)
- CABLE ASM
076767-03-000
- SCREW
113563-01-CHT
- SEALANT
069640-03-000

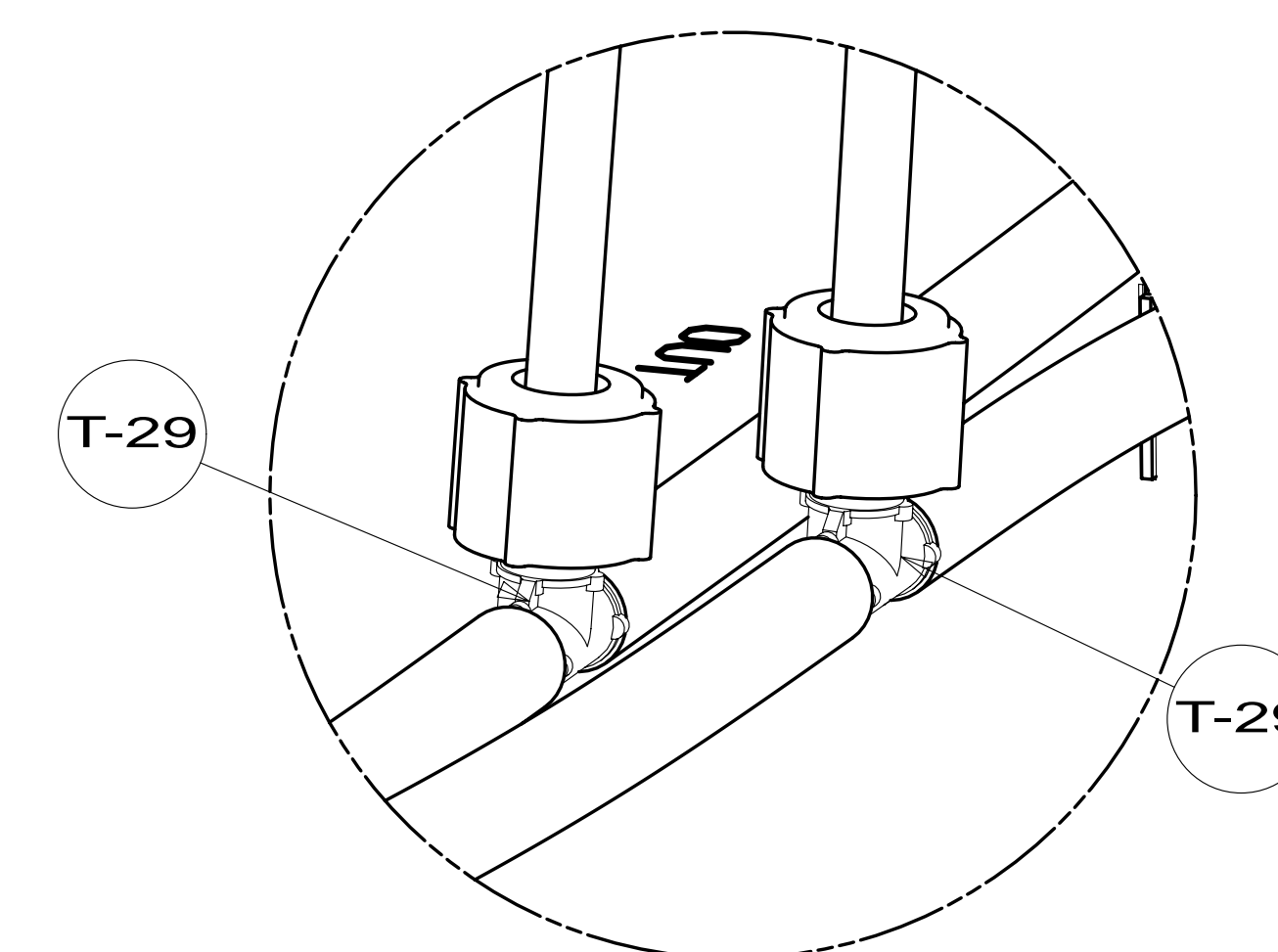
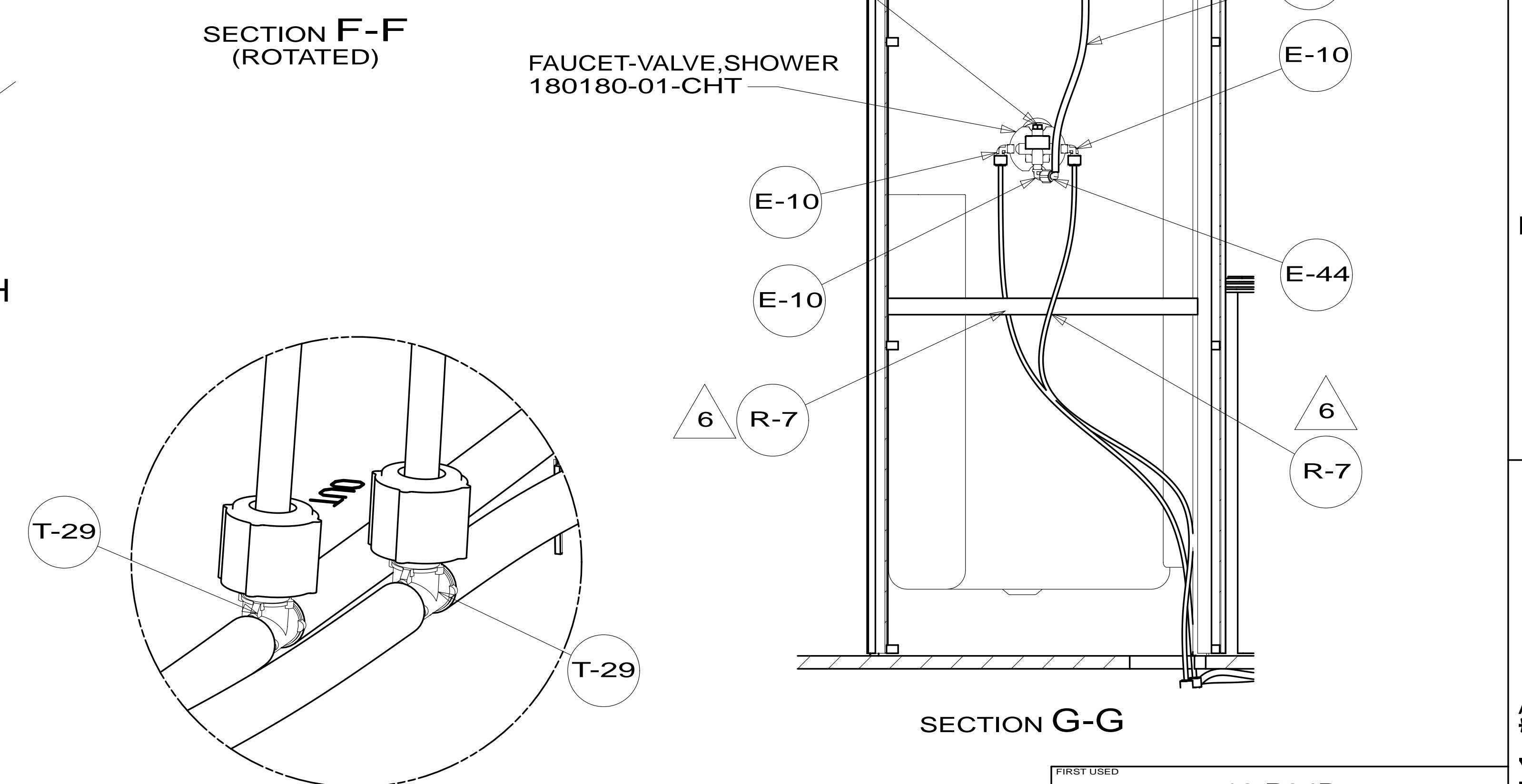
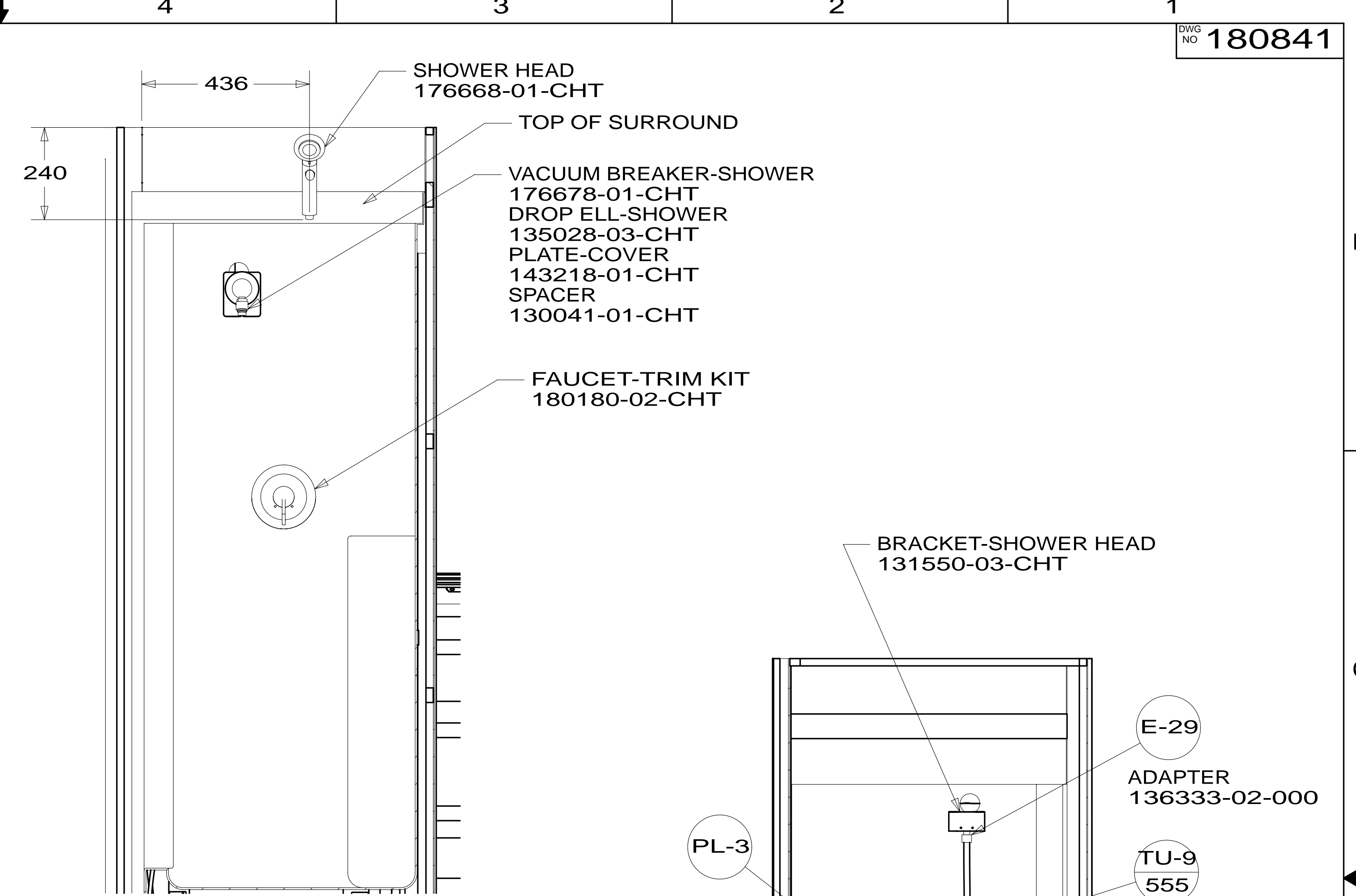
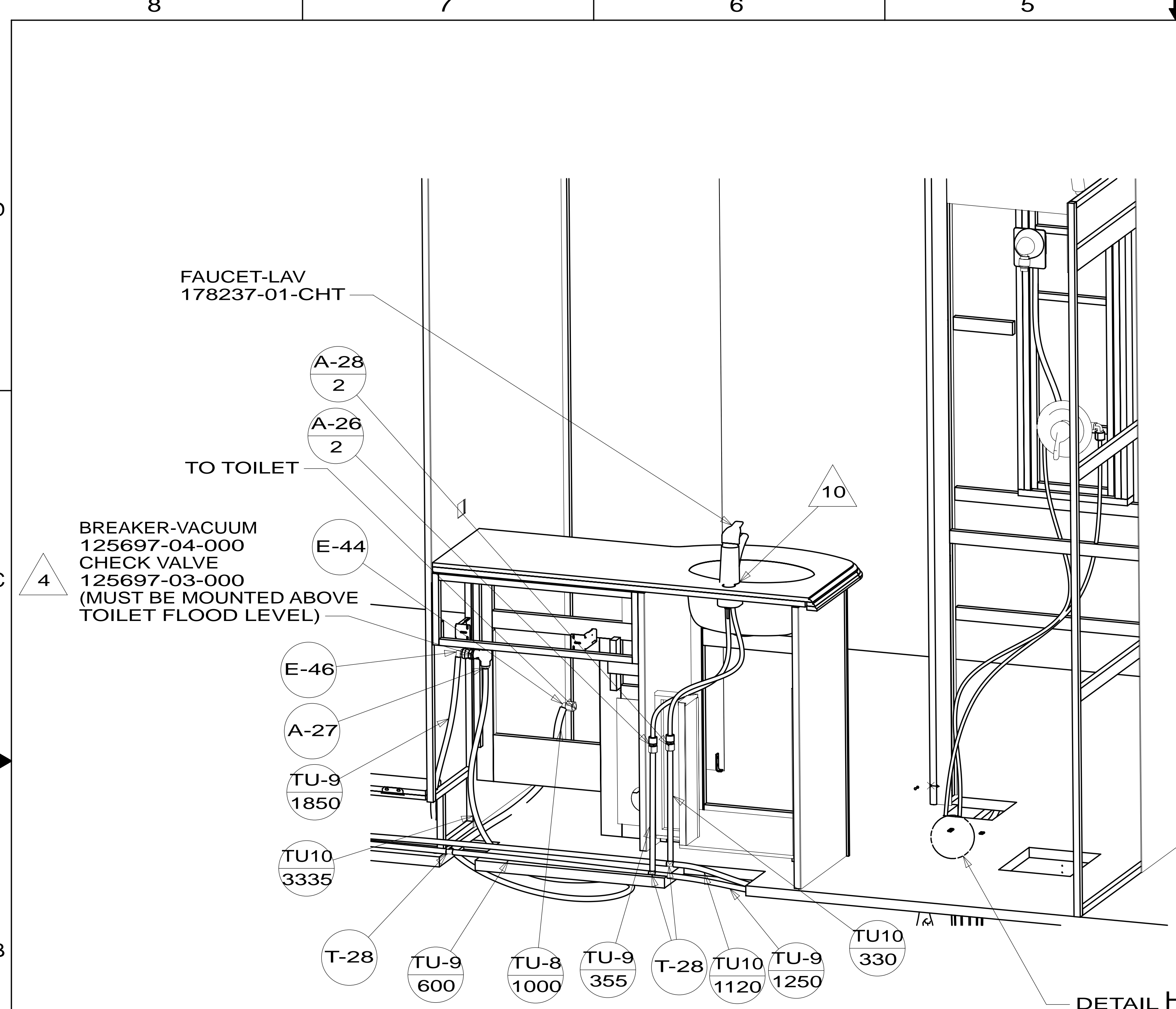
- BRACKET-VALVE
151245-04-CHT
- SCREW
000G67-10-10U(4)

- FAUCET
098419-01-000 (2)



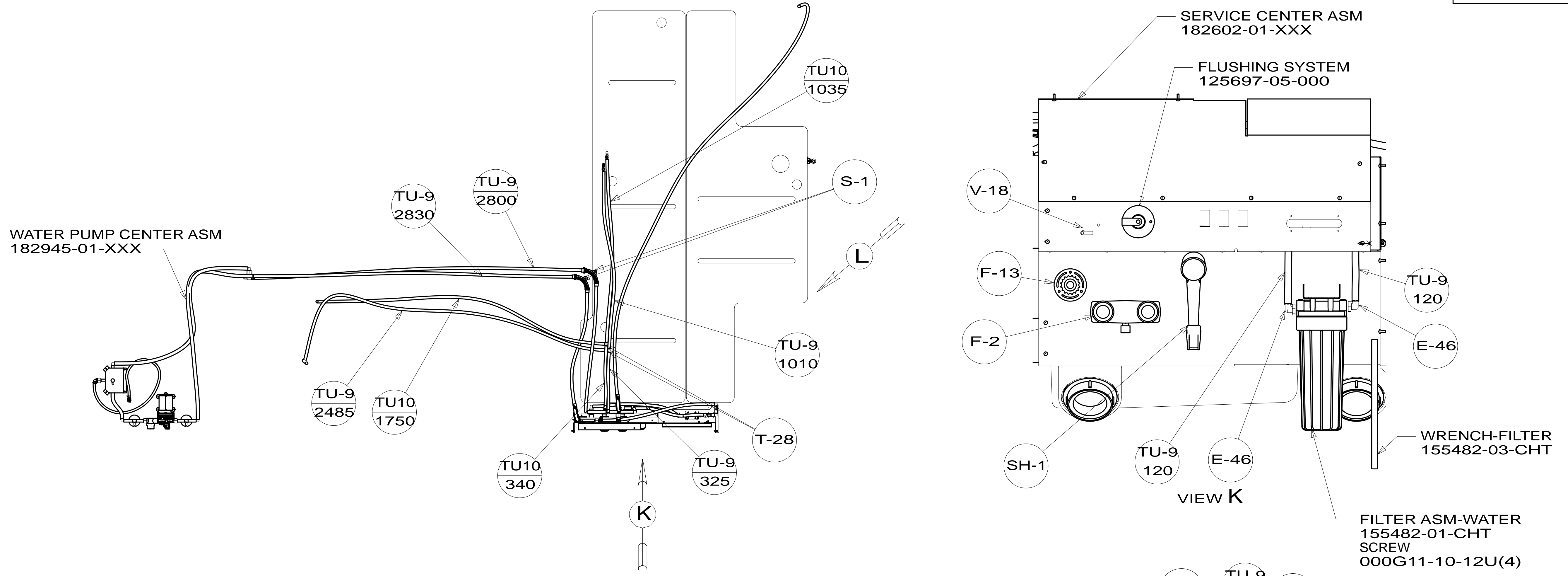
| | | |
|------------|----------------------|-------------|
| FIRST USED | 13 P34B | |
| TITLE: | DO NOT SCALE DRAWING | |
| | WATER SYSTEM INSTL | |
| SHEET 2 | PART NO 180841 | REV |
| | | 05-Mar-2013 |

* 180841 * A

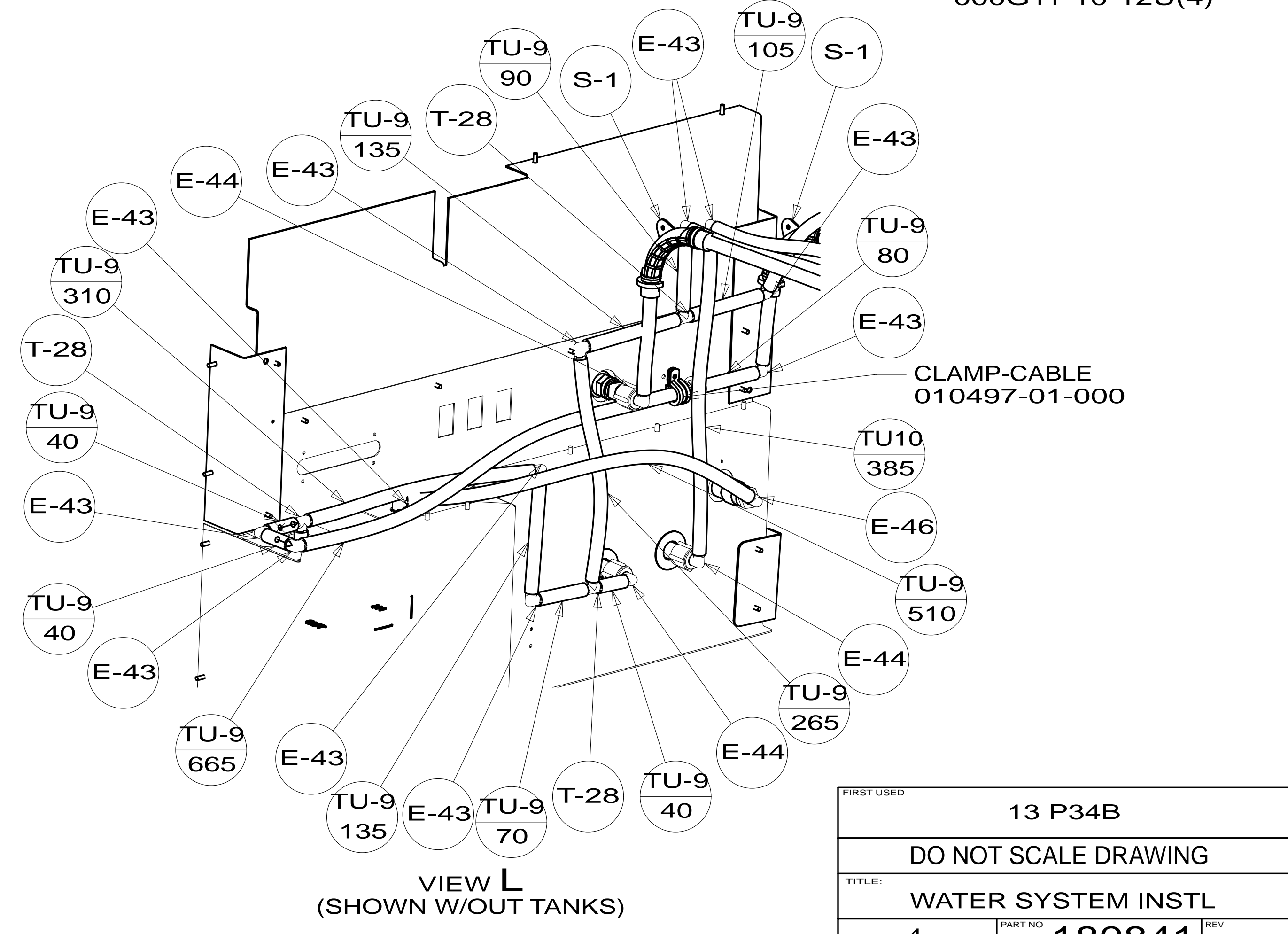


| | | |
|------------------------------|-------------------|-------------|
| FIRST USED | 13 P34B | |
| DO NOT SCALE DRAWING | | |
| TITLE: WATER SYSTEM INSTL | | |
| SHEET 3 | PART NO 180841 | REV |
| | | 05-Mar-2013 |

* 180841 * A



TOP VIEW SHOWING LINES UNDER FLOOR



VIEW L (SHOWN W/OUT TANKS)

| | | |
|-------------|----------------------|--------|
| FIRST USED | 13 P34B | |
| TITLE: | DO NOT SCALE DRAWING | |
| SHEET 4 | PART NO | 180841 |
| | REV | |
| 05-Mar-2013 | | |

* 180841 * A