

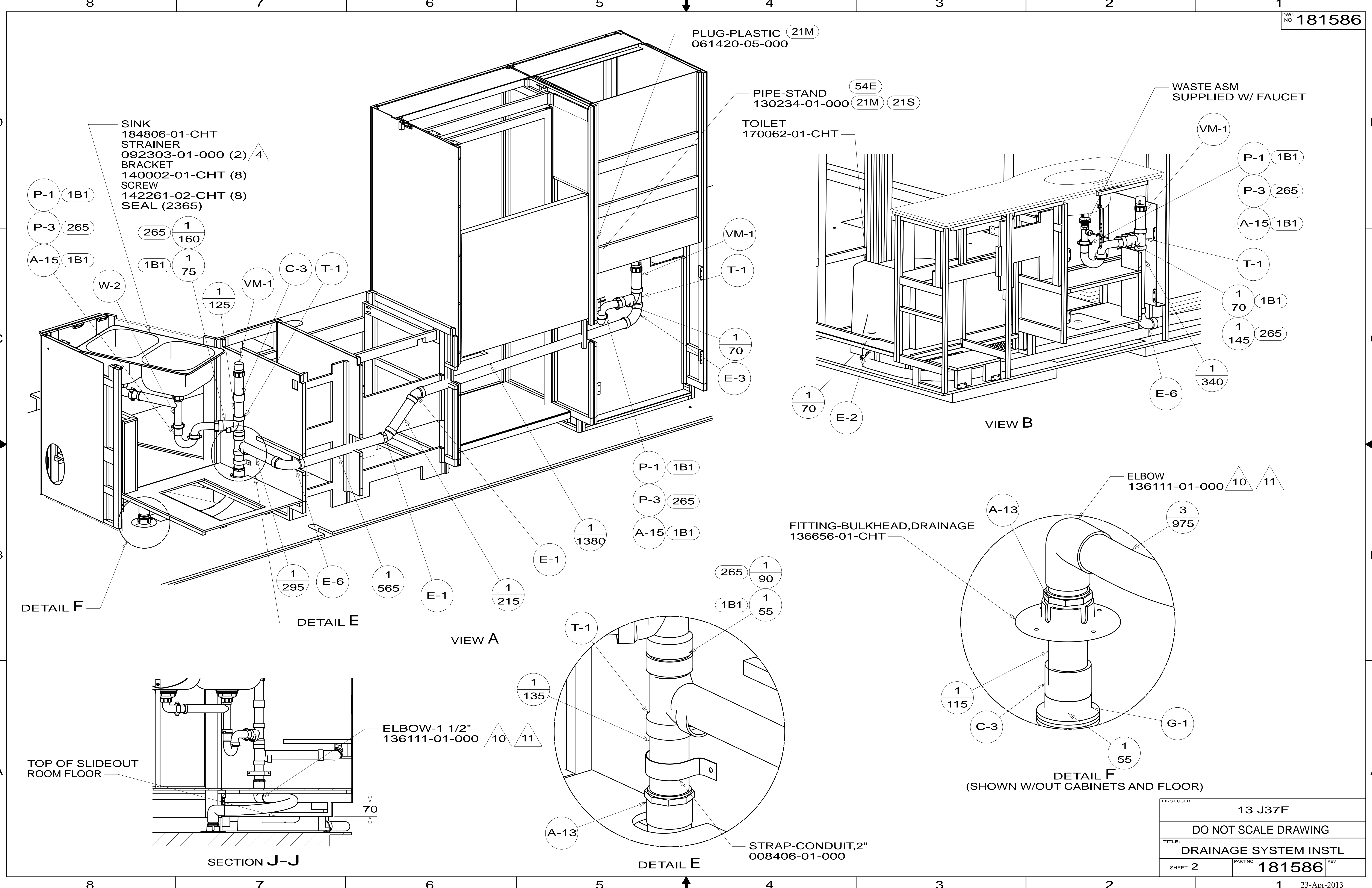
14. REQUIRES 10 GALLONS OF 182955-01-000.
- ▲ 13 PLACE PLYWOOD UNDER SHOWER AS REQUIRED.
- ▲ 12 ADD TEFLON TAPE 010405-01-000.
- ▲ 11 GLUE FITTING AFTER CABINET IS INSTALLED.
- ▲ 10 APPLY PRIMER 126427-02-000 AND CEMENT 126427-01-000 BETWEEN ELBOW AND FLEX PIPE.
9. SEE DRAWING 061607 FOR INSTALLATION OF GROMMETS.
8. SECURE DRAINAGE PIPES TO CABINET USING WIRE TIE 108046-02-000, AND SCREW 000G67-10-12B AT INTERVALS OF NOT OF NOT MORE THAN 4 FEET APART.
- ▲ 7 SECURE VENT PIPE TO TANK WITH CLAMP 062401-02-000.
- ▲ 6 VENT PIPE MUST PROJECT 51 MIN AND 64 MAX ABOVE ROOF FOR PROPER FIT AND FUNCTION. ADD S-1 (116666-01-CHT SEAL-VENT PIPE) AROUND PIPE ON ROOF BEFORE VENT CAP IS INSTALLED.
5. SEAL AROUND SHOWER WITH SILICONE.
- ▲ 4 USE SMOOTH PLUMBERS PUTTY 167459-01-000 TO SEAL STRAINER (0.2 PER STRAINER).
3. ALL PIPE AND FITTINGS TO BE ASSEMBLED WITH SOLVENT 004020-01-000 (USA), 004020-02-000 (CAN)
2. SLOPE OF TRAP ARM MUST BE 6 PER 305 mm.
1. SLOPE OF HORIZONTAL PIPING TO BE MINIMUM OF 3 PER 305 mm.

(1B1) CODES/STANDARDS USA
 (265) CODES/STANDARDS-CSA/CMVSS

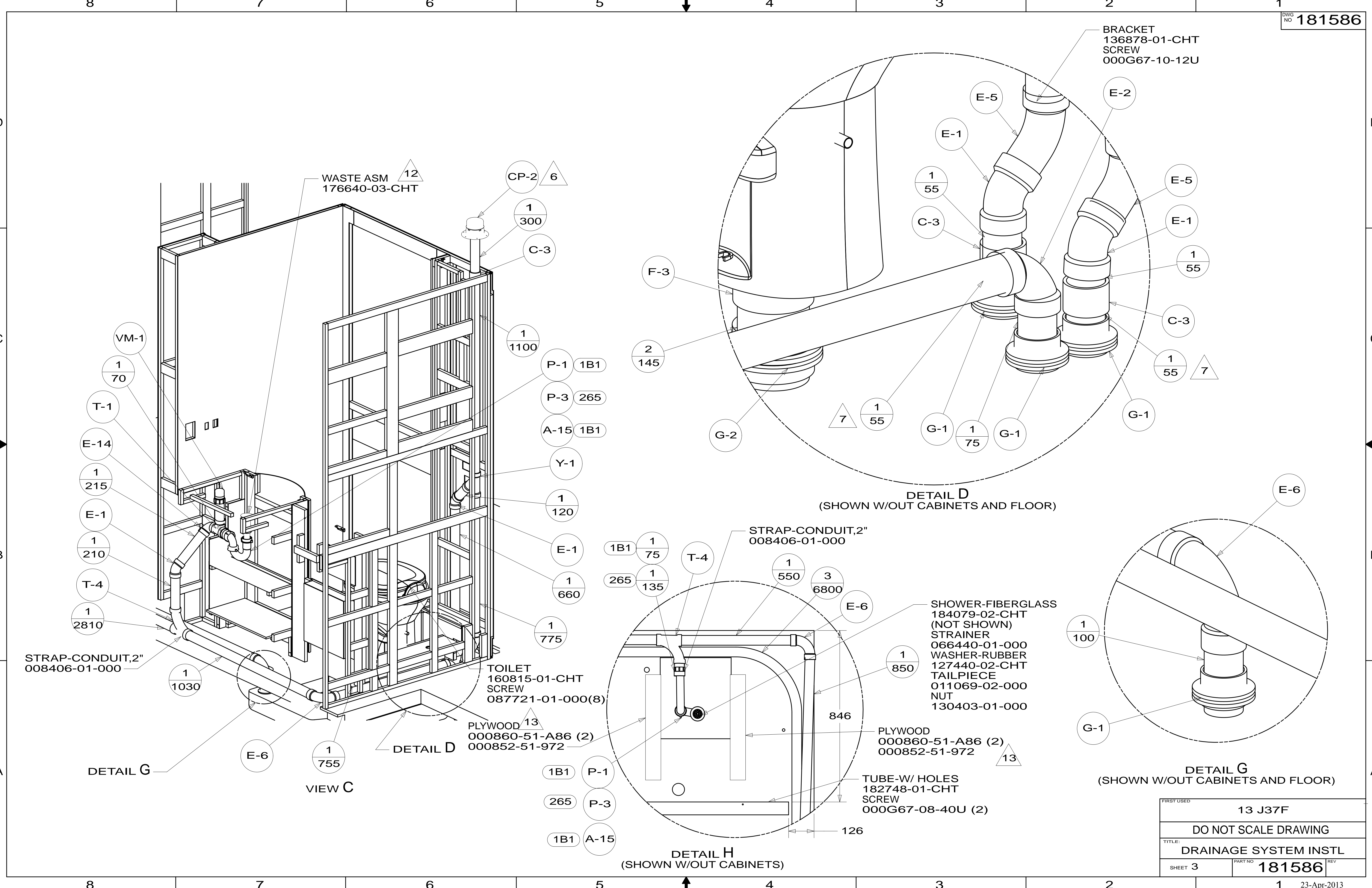
WINNEBAGO		COPYRIGHT 2013 WINNEBAGO INDUSTRIES, INC.	
DTR	ORIG. DATE	ALL DIMENSIONS ARE IN MILLIMETERS	
CHKR			
P.E.			
M.E.	FIRST USED	13 J37F	
DSNR			
UNSPECIFIED TOLERANCES ARE:		MATERIAL:	
WHOLE DIM (X)	: 3		
ONE-PLACE (X.X)	: 1.5		
TWO-PLACE (X.XX)	: 0.50		
ANGLE	: 1°		
THIRD ANGLE PROJECTION			
DO NOT SCALE DRAWING		REFER TO ES0018 FOR FASTENER TIGHTENING GUIDELINES	
TITLE: DRAINAGE SYSTEM INSTL			
SHEET 1 OF 4	PART NO	181586	REV
REF:	1	23-Apr-2013	

FOR
DRAINAGE
CALLOUTS
SEE DWG NO
116229-01-000

NOTES:



FIRST USED	13 J37F
DO NOT SCALE DRAWING	
TITLE: DRAINAGE SYSTEM INSTL	
SHEET 2	PART NO 181586 REV



WASTE ASM
176640-03-CHT

BRACKET
136878-01-CHT
SCREW
000G67-10-12U

DETAIL D
(SHOWN W/OUT CABINETS AND FLOOR)

DETAIL G
(SHOWN W/OUT CABINETS AND FLOOR)

DETAIL H
(SHOWN W/OUT CABINETS)

VIEW C

STRAP-CONDUIT,2"
008406-01-000

TOILET
160815-01-CHT
SCREW
087721-01-000(8)

PLYWOOD 13
000860-51-A86 (2)
000852-51-972

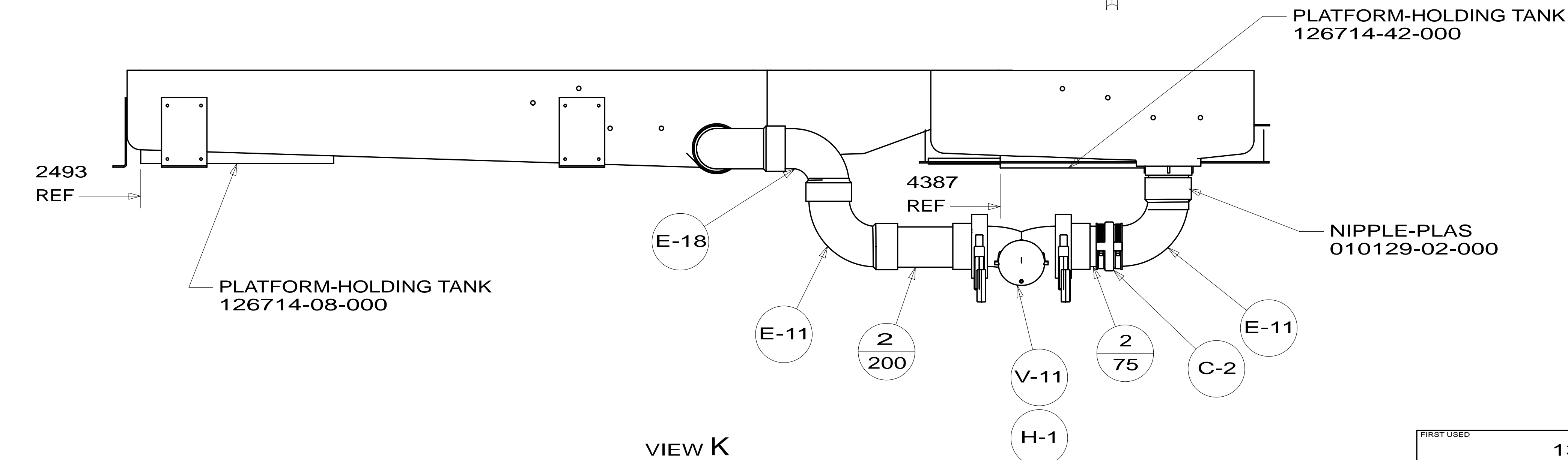
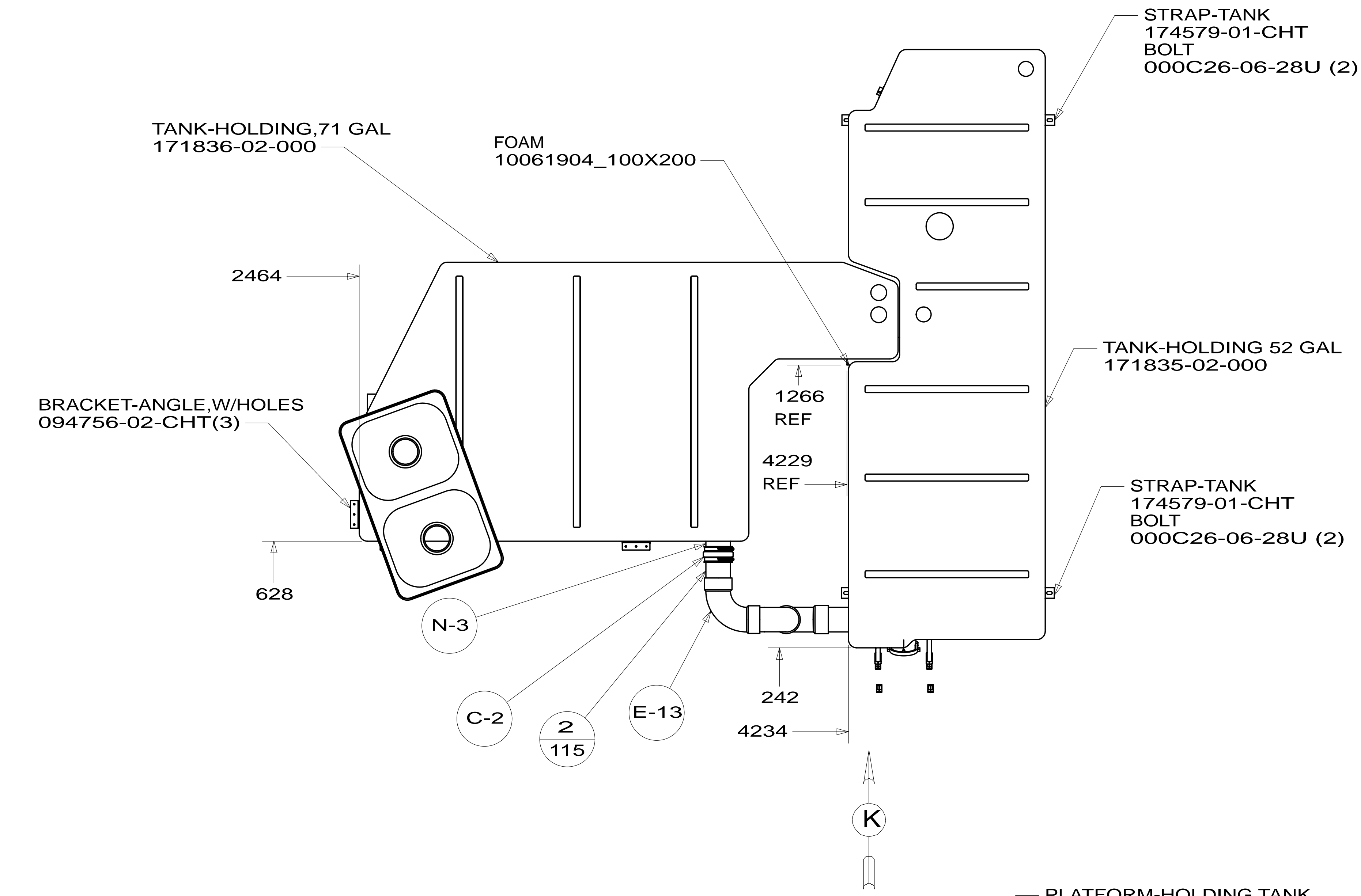
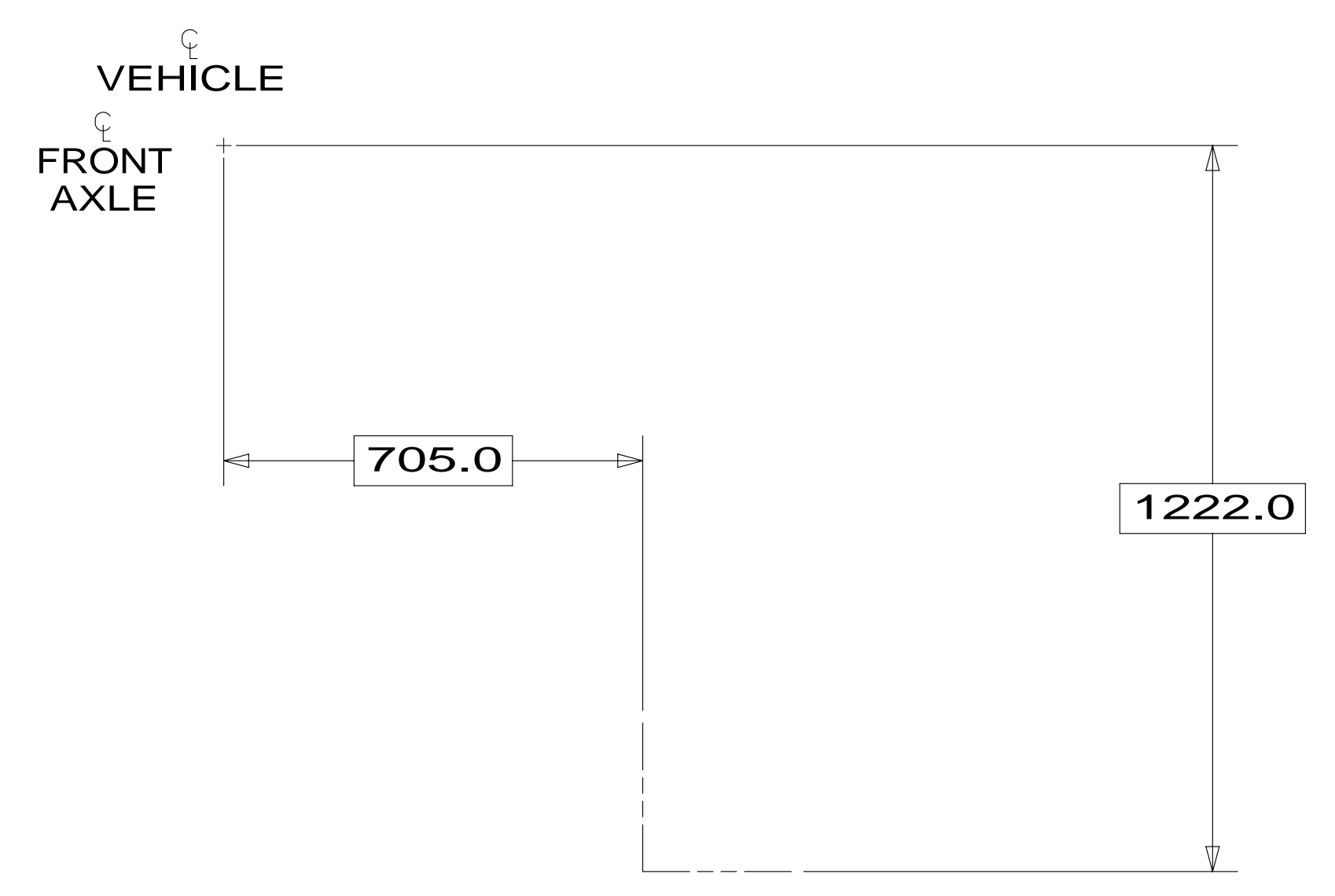
STRAP-CONDUIT,2"
008406-01-000

SHOWER-FIBERGLASS
184079-02-CHT
(NOT SHOWN)
STRAINER
066440-01-000
WASHER-RUBBER
127440-02-CHT
TAILPIECE
011069-02-000
NUT
130403-01-000

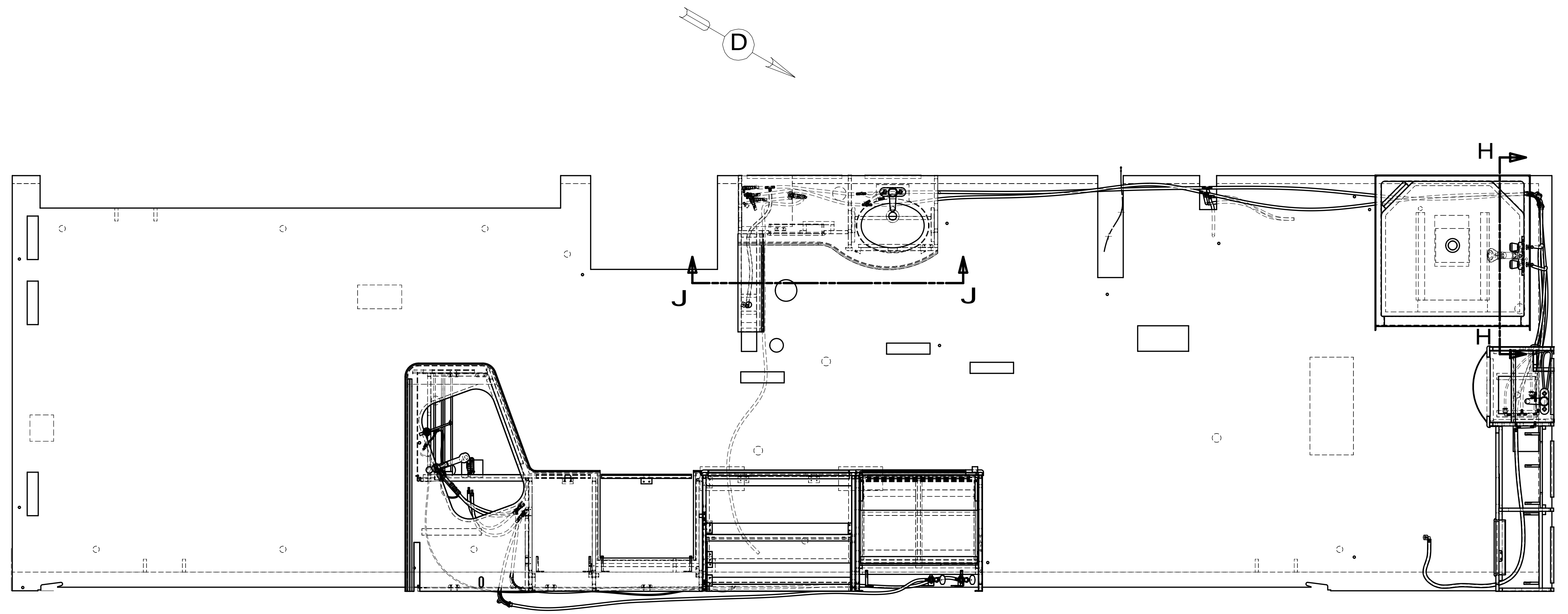
PLYWOOD
000860-51-A86 (2)
000852-51-972

TUBE-W/ HOLES
182748-01-CHT
SCREW
000G67-08-40U (2)

FIRST USED	13 J37F	
DO NOT SCALE DRAWING		
TITLE: DRAINAGE SYSTEM INSTL		
SHEET 3	PART NO	181586
REV		



FIRST USED	13 J37F	
TITLE:	DO NOT SCALE DRAWING	
TITLE:	DRAINAGE SYSTEM INSTL	
SHEET 4	PART NO 181586	REV
		23-Apr-2013

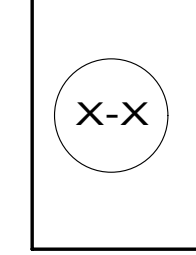


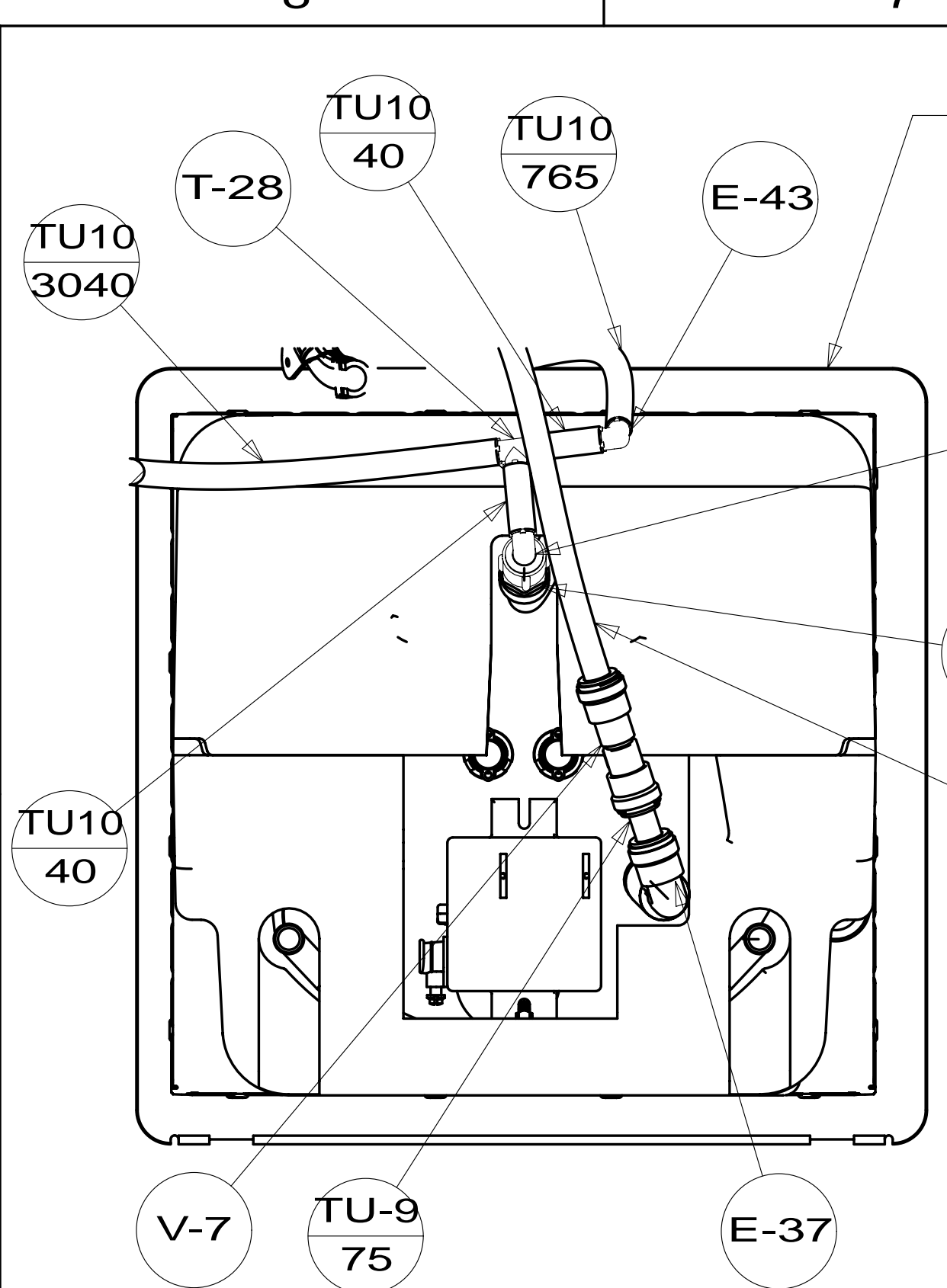
- 144 REFRIGERATOR-DOUBLE DOOR
- 15U REFRIGERATOR/FRZR-W/ICEMAKER
- 29B WATER PURIFIER
- 1B2 WTR HTR-10 GAL/ELEC/LP/MTRAIID
- 53E WATER SYS WINTERIZATION PKG

- NOTES:
9. FLUSHING SYSTEM REQUIRES 125697-06-000 INSTRUCTION SHEET.
 8. ALL CRIMP FITTINGS TO 1/2" PEX TUBING REQUIRE 1/2" CLAMP 140171-03-000.
 7. ALL CRIMP FITTINGS TO 5/8" PEX TUBING REQUIRE 5/8" CLAMP 140171-04-000.
 6. LABEL HOT AND COLD SUPPLY TUBES AND TAPE FITTING TO TUBE BEFORE CABINET SET TO PREVENT MOVEMENT.
 5. ADD PIPE WRAP (LADDER SCRAP 110157-02-000) INSULATION.
 4. ADD TEFLON TAPE 010405-02-000.
 3. ALL TUBING TO BE SECURED AT 1200 INTERVALS MAXIMUM WITH CLAMP 010495-01-000 AND SCREW 000G67-10-12U OR EQUIVALENT.
 2. TUBING TO BE INSTALLED WITH SUFFICIENT SLOPE TO PROVIDE DRAINAGE TO NEAREST VALVE.
 1. PLASTIC FITTINGS TO BE SEALED WITH SEALANT 084456-01-000.

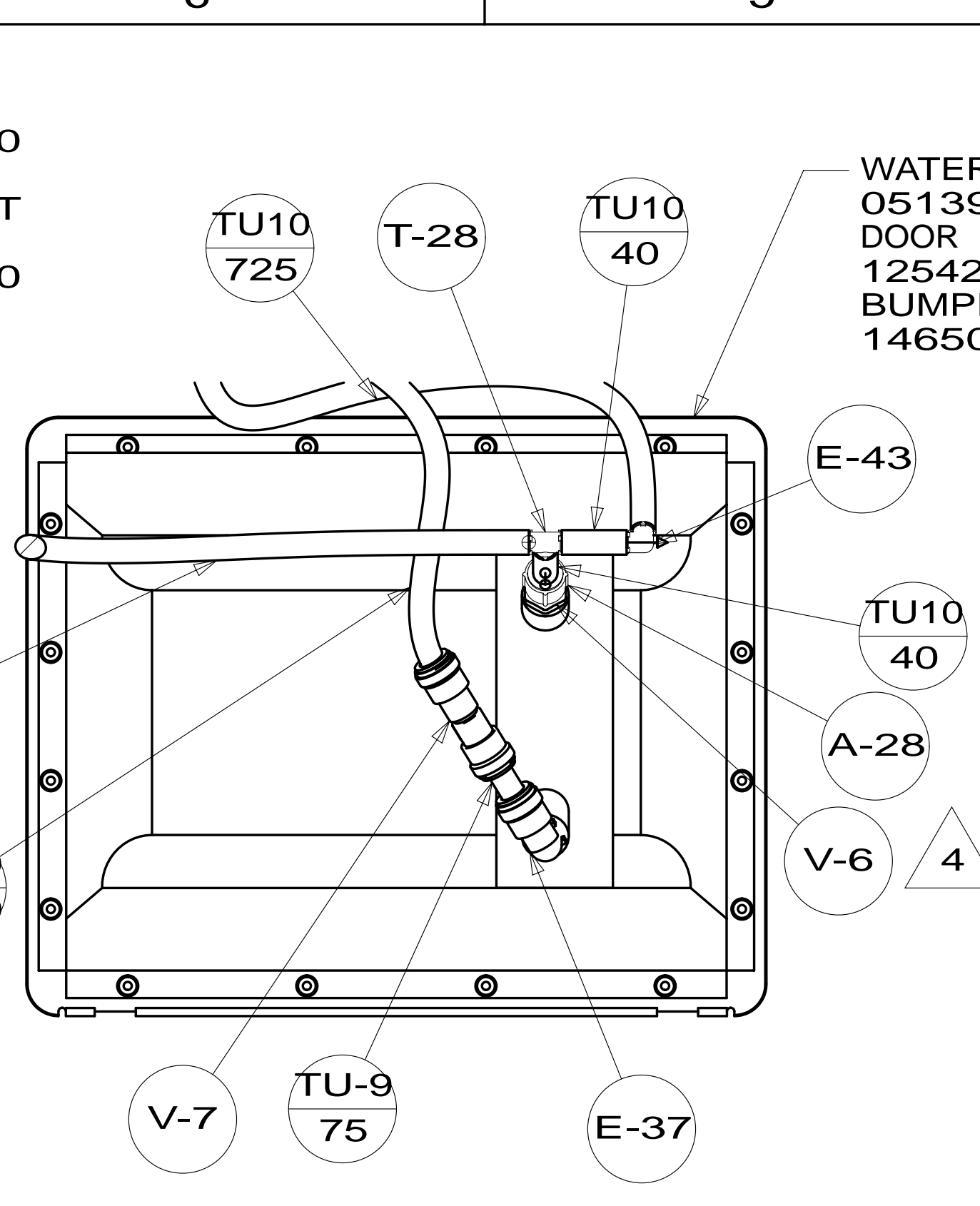
		COPYRIGHT 2012 WINNEBAGO INDUSTRIES, INC.	
DFT-ORIG	ORIG. DATE	ALL DIMENSIONS ARE IN MILLIMETERS	
CHKR			
P.E.			
M.E.	FIRST USED		
DSNR		13 J37F	
UNSPECIFIED TOLERANCES ARE:		MATERIAL:	
WHOLE DIM (X)	: 3		
ONE-PLACE (X.X)	: 1.5		
TWO-PLACE (X.XX)	: 0.50		
ANGLE	: 1°		
THIRD ANGLE PROJECTION			
DO NOT SCALE DRAWING		REFER TO ES0018 FOR FASTENER TIGHTENING GUIDELINES	
TITLE: WATER SYSTEM INSTL			
SHEET 1 OF 4	PART NO	181595	REV
REF:	1	18-Oct-2012	

FOR WATER CALLOUTS SEE DWG NO 116230-01-000

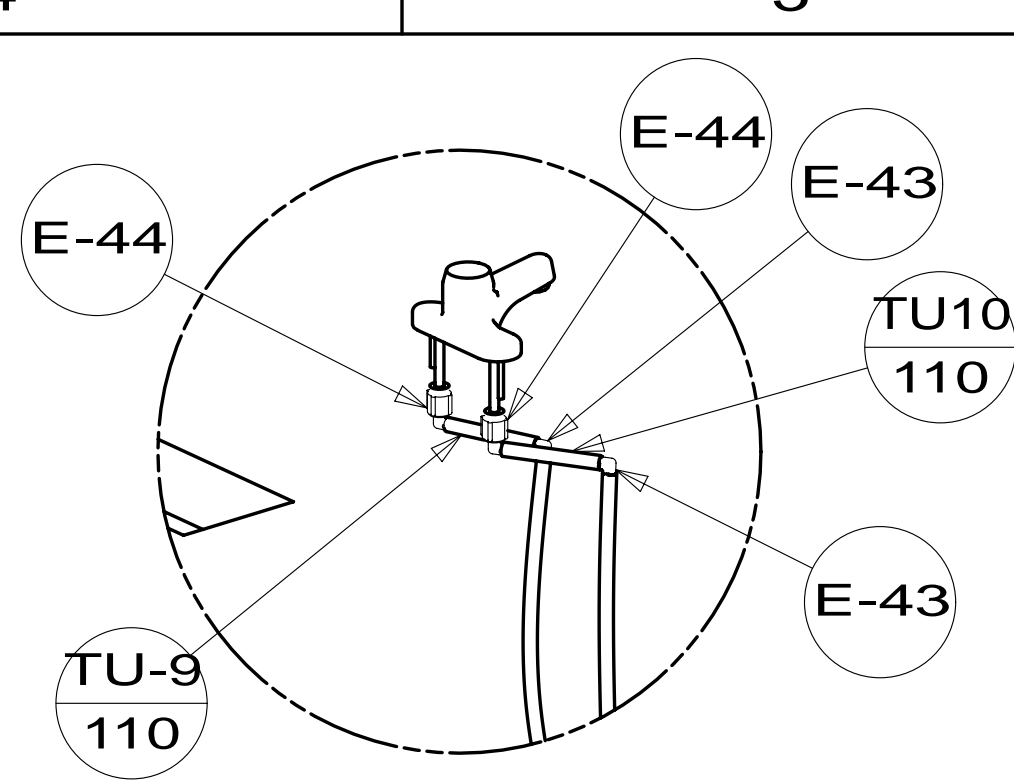




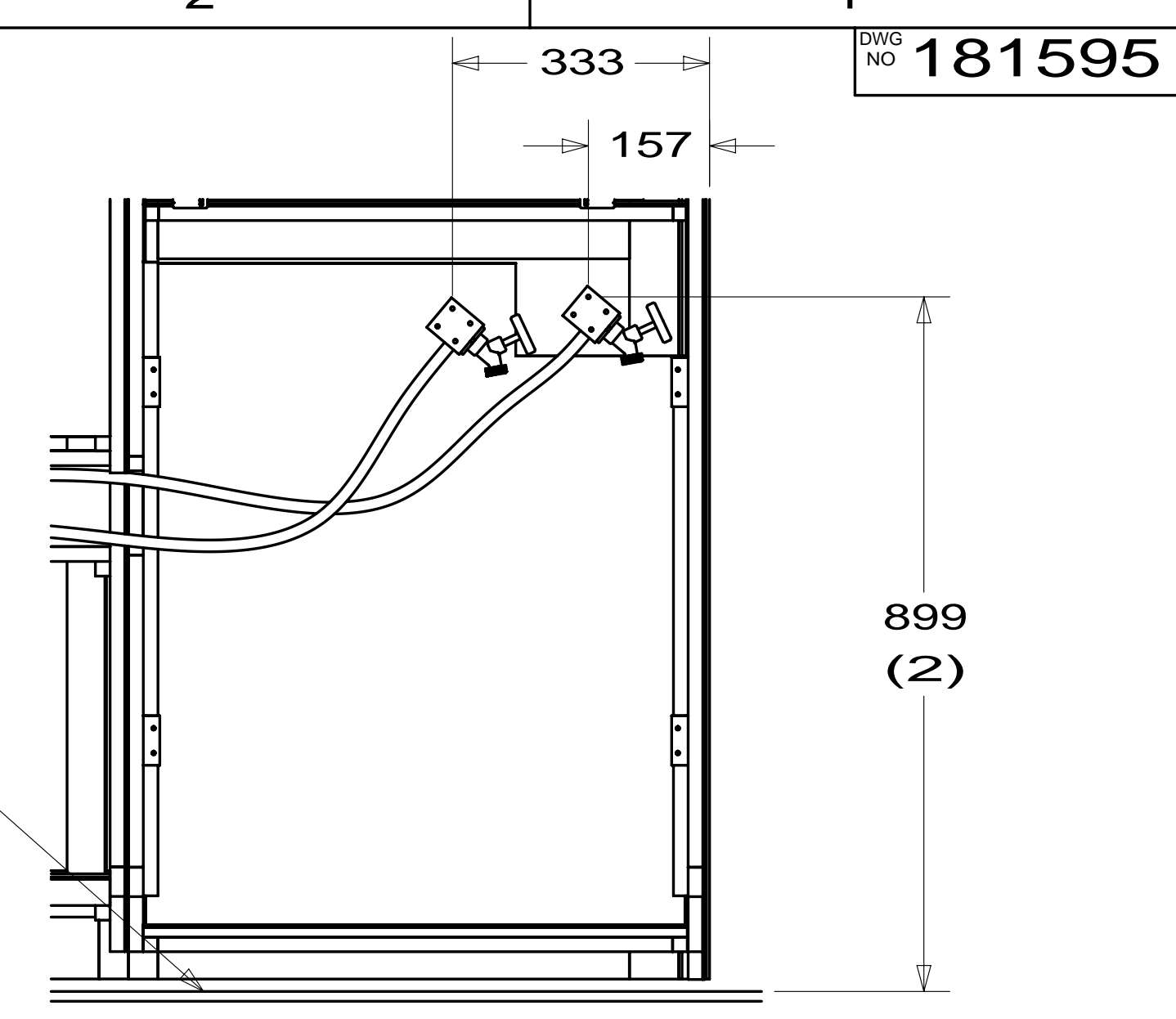
WATER HEATER
145541-01-000
DOOR
125420-03-CHT
BUMPER INSTL
146507-01-000



WATER HEATER
051391-03-000
DOOR
125420-04-CHT
BUMPER INSTL
146507-01-000



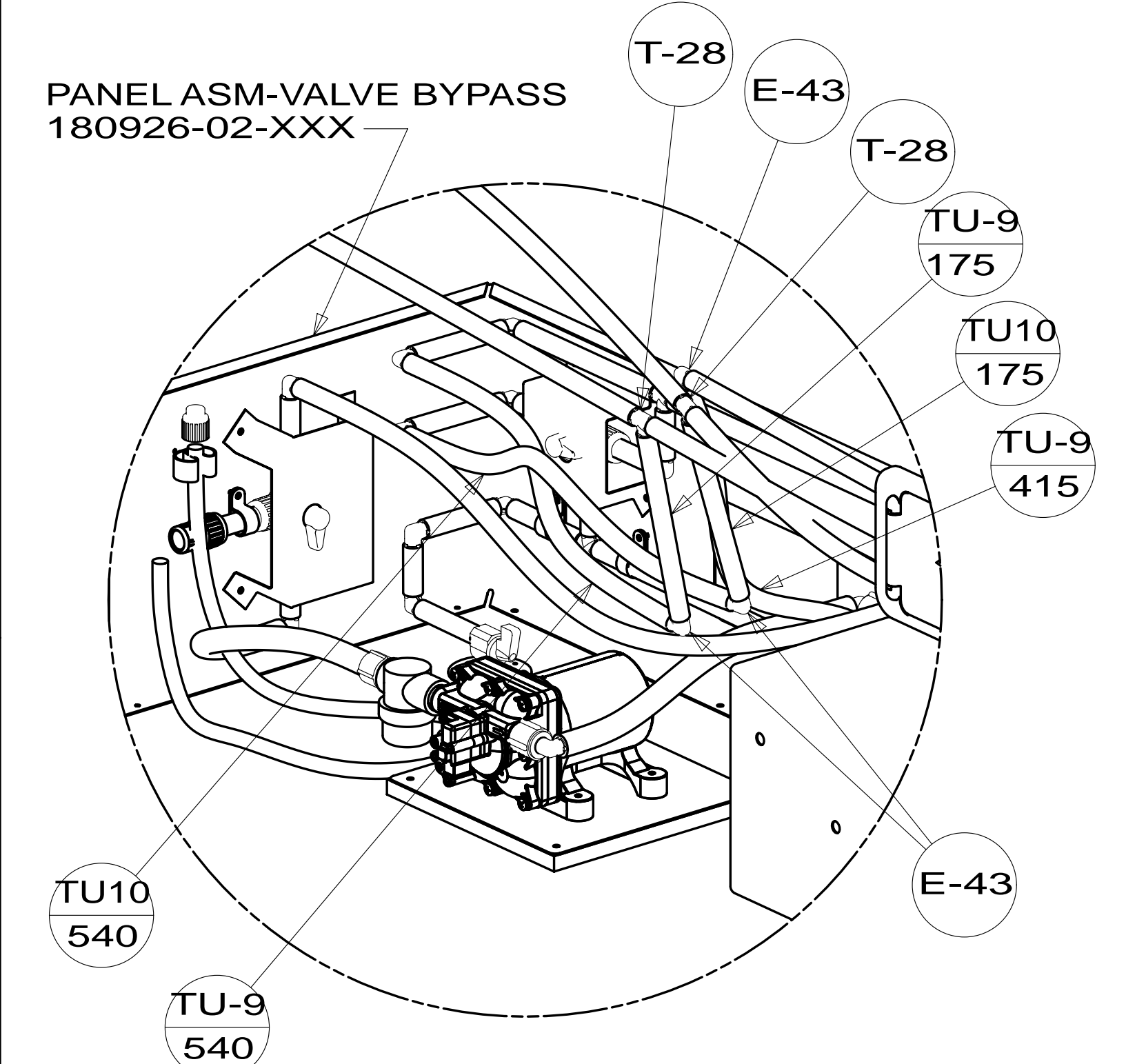
DETAIL S



VIEW R

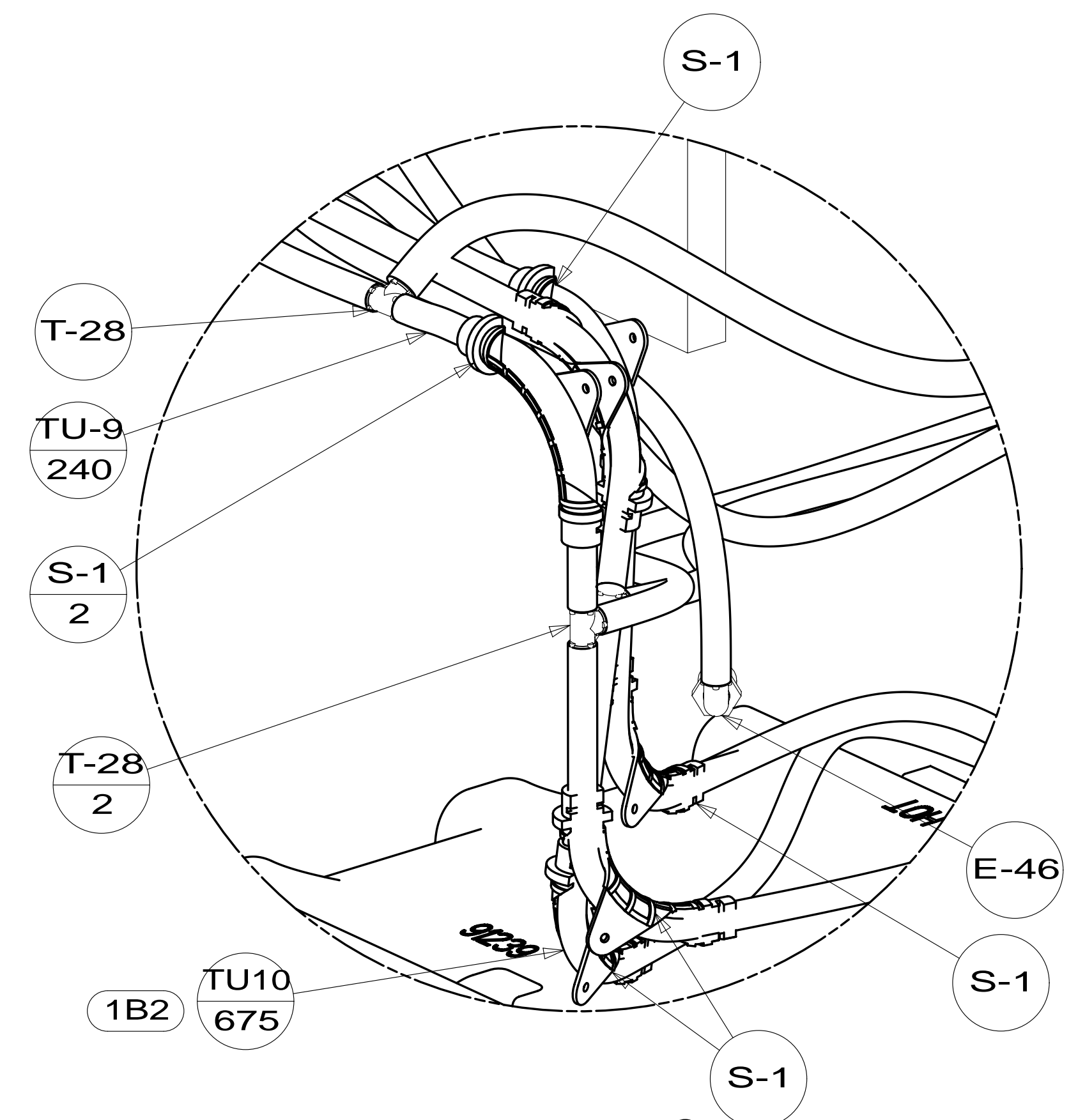
SECTION J-J
(SHOWN W/OUT ACCESS PANEL)
1B2

SECTION J-J
(SHOWN W/OUT ACCESS PANEL)
611

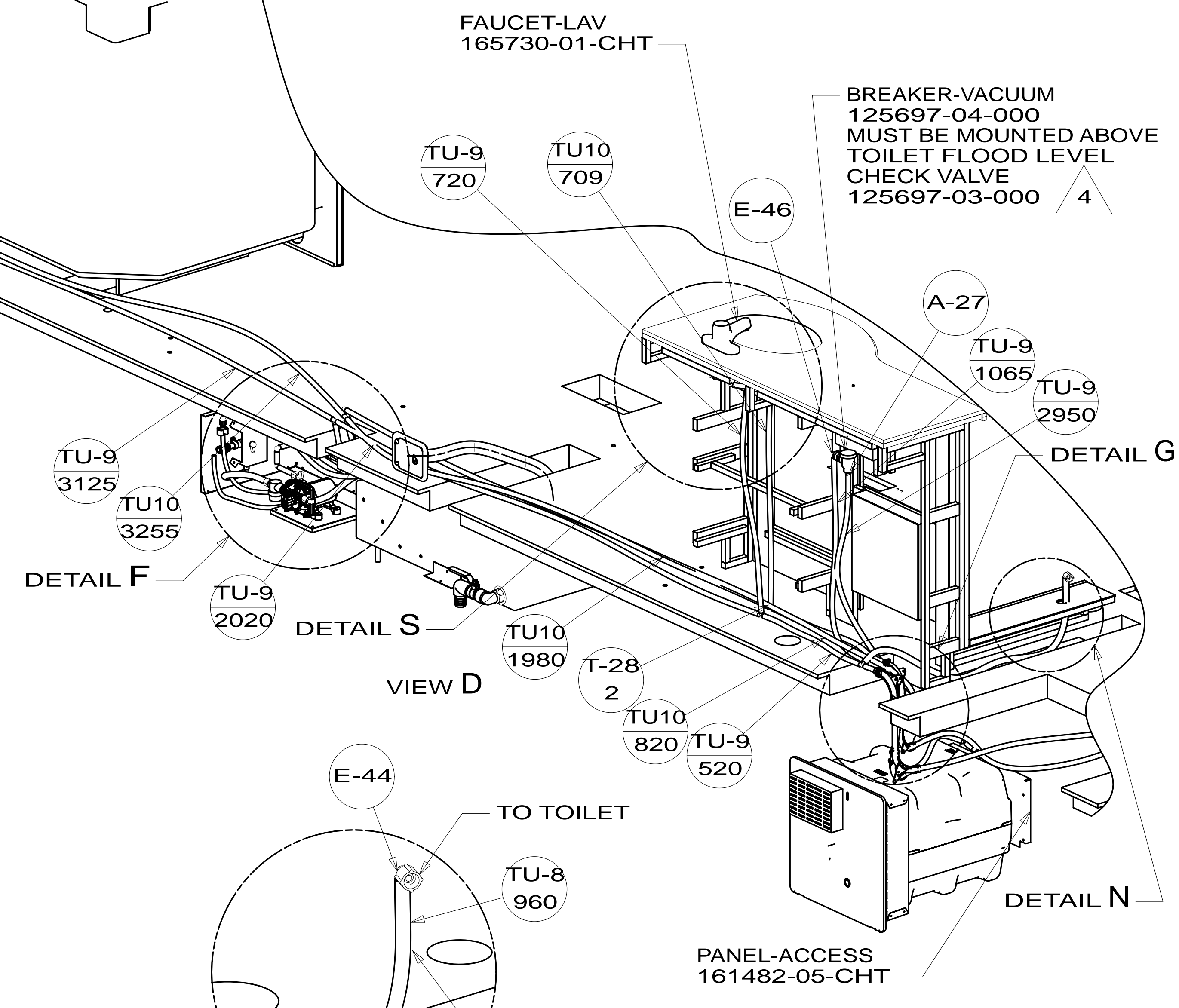


PANEL ASM-VALVE BYPASS
180926-02-XXX

DETAIL F
(SHOWN W/OUT FLOOR & CABINETS)



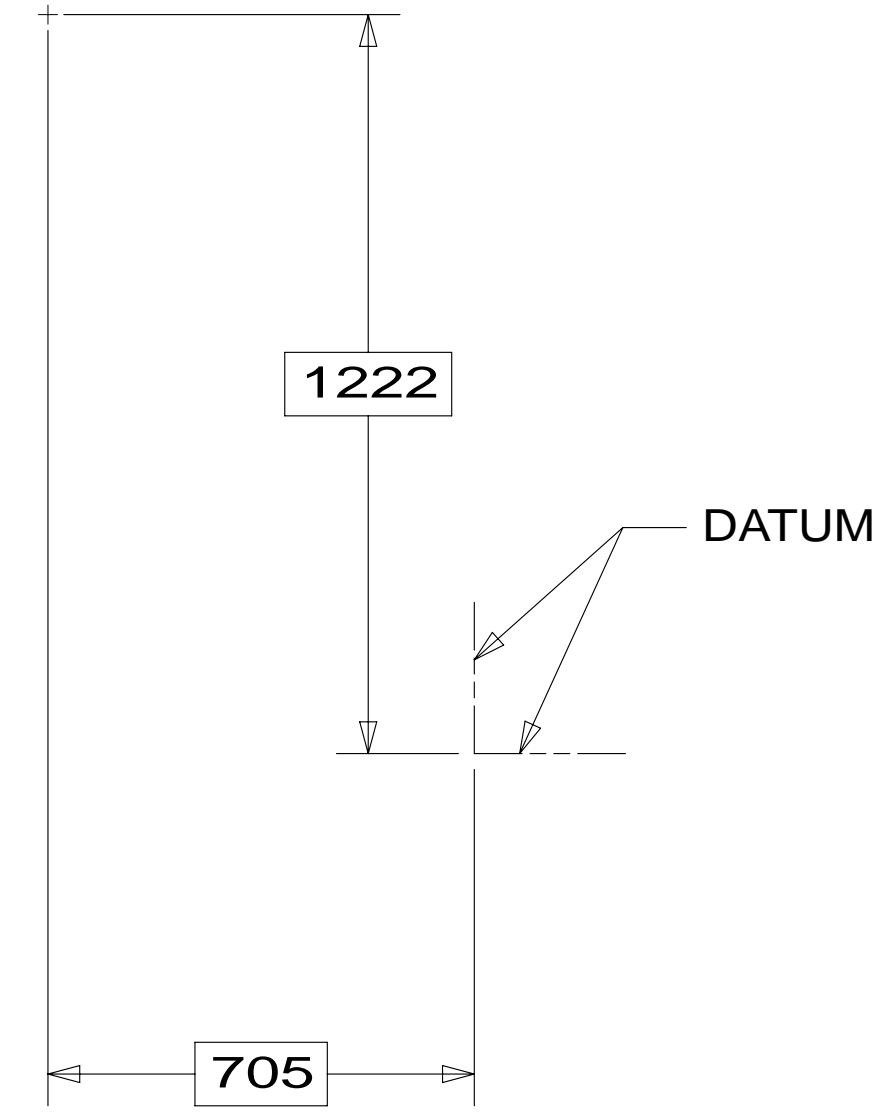
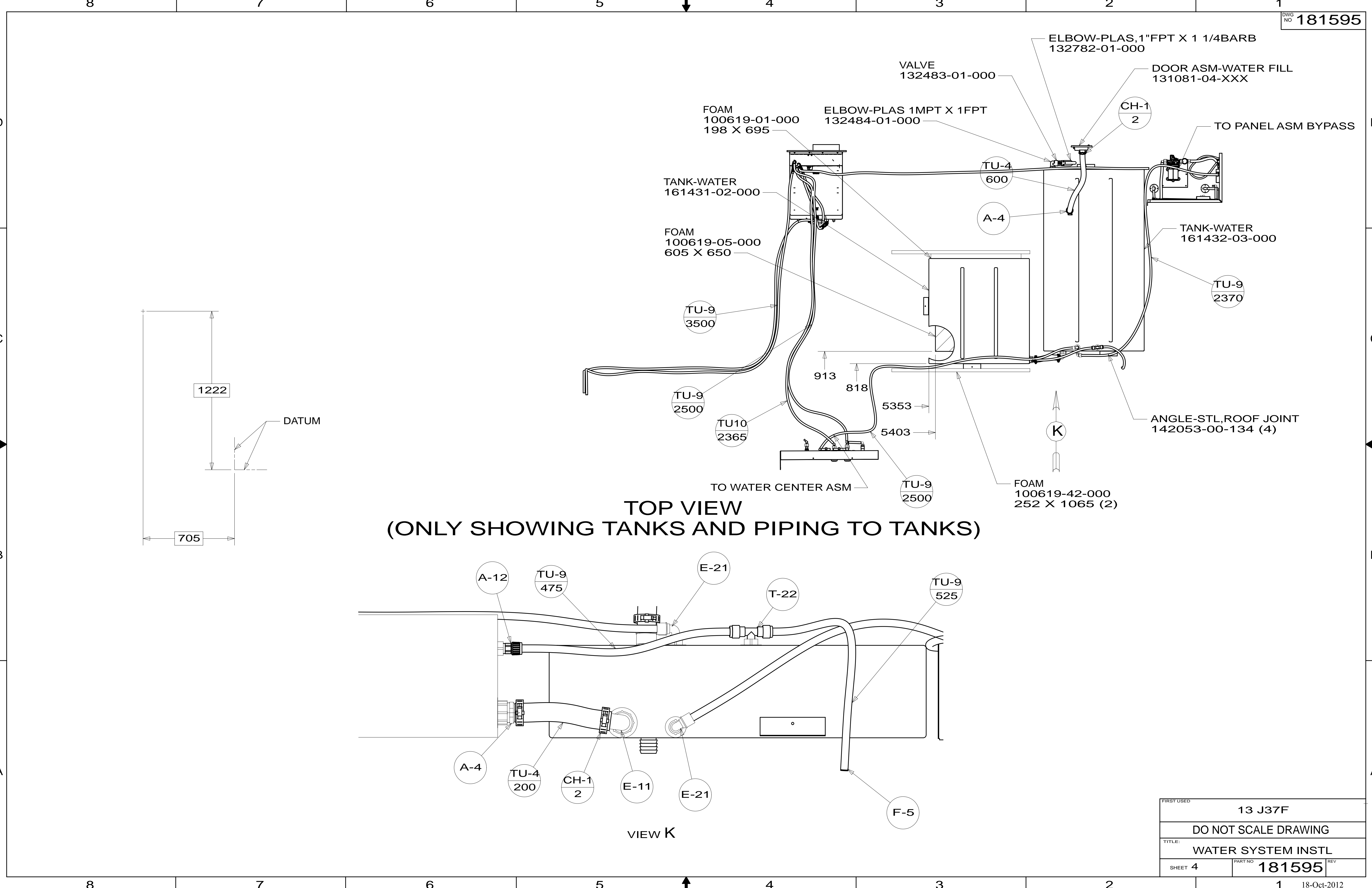
DETAIL G
(SHOWN W/OUT FLOOR & CABINETS)



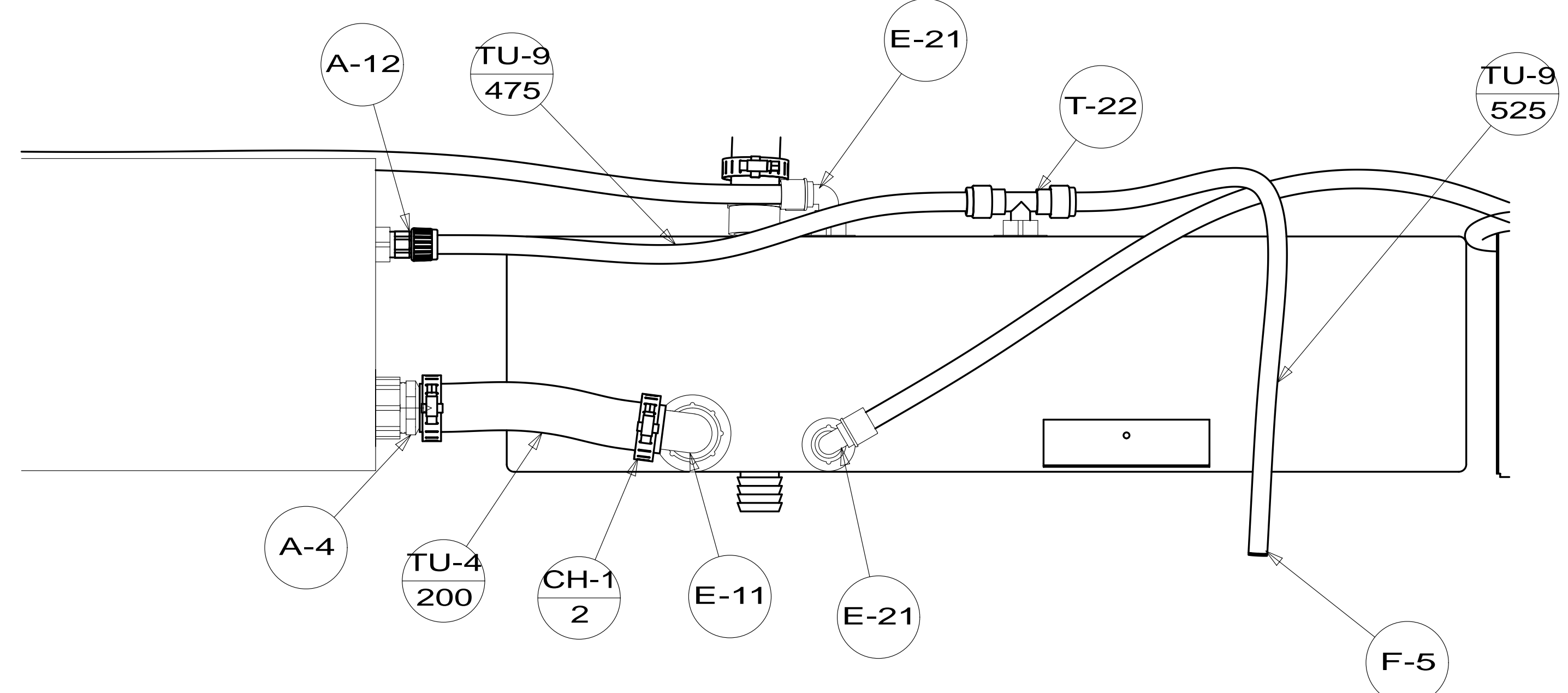
VIEW D

DETAIL N
(SHOWN W/OUT CABINETS)

FIRST USED	13 J37F	
TITLE:	DO NOT SCALE DRAWING	
SHEET 3	PART NO	181595
	REV	1
18-Oct-2012		



TOP VIEW
(ONLY SHOWING TANKS AND PIPING TO TANKS)



VIEW K

FIRST USED	13 J37F	
DO NOT SCALE DRAWING		
TITLE:	WATER SYSTEM INSTL	
SHEET 4	PART NO 181595	REV