

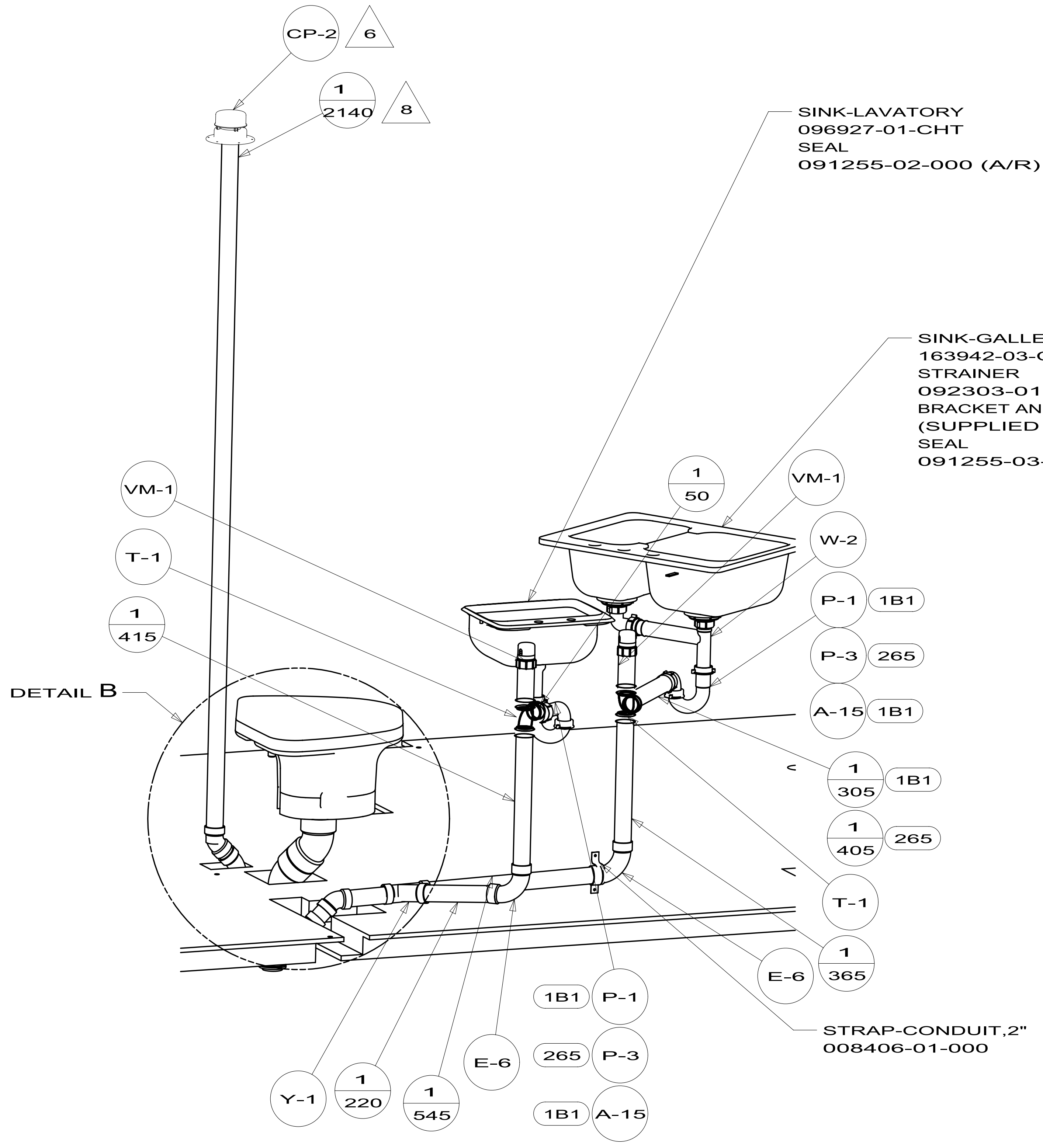
FRONT
OF
COACH

- NOTES:
1. SLOPE OF HORIZONTAL PIPING TO BE MINIMUM OF 3 PER 305 mm.
 2. SLOPE OF TRAP ARM MUST BE 6 PER 305 mm.
 3. ALL PIPE AND FITTINGS TO BE ASSEMBLED WITH SOLVENT 004020-01-000 (USA), 004020-02-000 (CAN)
 4. USE SMOOTH PLUMBERS PUTTY 167459-01-000 TO SEAL STRAINER (0.2 PER STRAINER).
 5. SEAL AROUND SHOWER WITH SILICONE.
 6. VENT PIPE MUST PROJECT 51 MIN AND 64 MAX ABOVE ROOF FOR PROPER FIT AND FUNCTION. ADD S-1 (116666-01-CHT SEAL-VENT PIPE) AROUND PIPE ON ROOF BEFORE VENT CAP IS INSTALLED.
 7. SECURE VENT PIPE TO FLOOR WITH CLAMP 062401-02-000 (2), SCREW 000G67-10-12B (2), BRACKET 136878-01-CHT (2).
 8. SECURE DRAINAGE PIPES TO CABINET USING WIRE TIE 108046-02-000, AND SCREW 000G67-10-12B AT INTERVALS OF NOT OF NOT MORE THAN 4 FEET APART.
 9. SEE DRAWING 061607 FOR INSTALLATION OF GROMMETS.
 10. VALVE TERMINATION TEE TO BE POSITIONED AT 10° DOWN AND OUTBOARD.

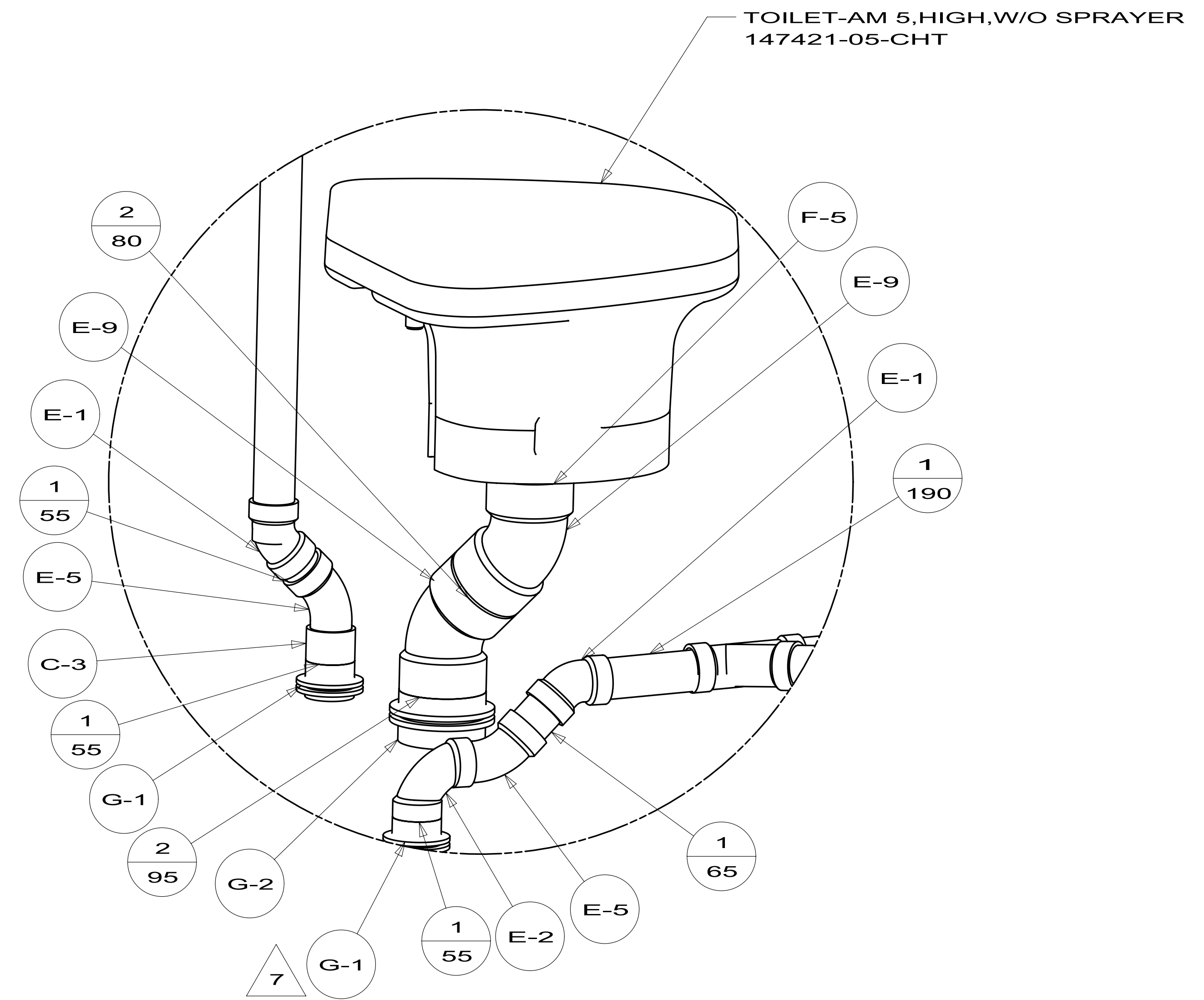
1B1 CODES/STANDARDS USA
265 CODES/STANDARDS-CSA/CMVSS

		COPYRIGHT 2012 WINNEBAGO INDUSTRIES, INC.	
DTR	ORIG. DATE	ALL DIMENSIONS ARE IN MILLIMETERS	
CHKR			
P.E.			
M.E.	FIRST USED		
DSNR		13 E26P	
UNSPECIFIED TOLERANCES ARE: WHOLE DIM (X) : 3 ONE-PLACE (X.X) : 1.5 TWO-PLACE (X.XX) : 0.50 ANGLE : 1°		MATERIAL:	
THIRD ANGLE PROJECTION			
DO NOT SCALE DRAWING		REFER TO ES0018 FOR FASTENER TIGHTENING GUIDELINES	
TITLE: DRAINAGE SYSTEM INSTL			
SHEET 1 OF 4		PART NO	180192
REF:		1	

FOR
DRAINAGE
CALLOUTS
SEE DWG NO
116229-01-000

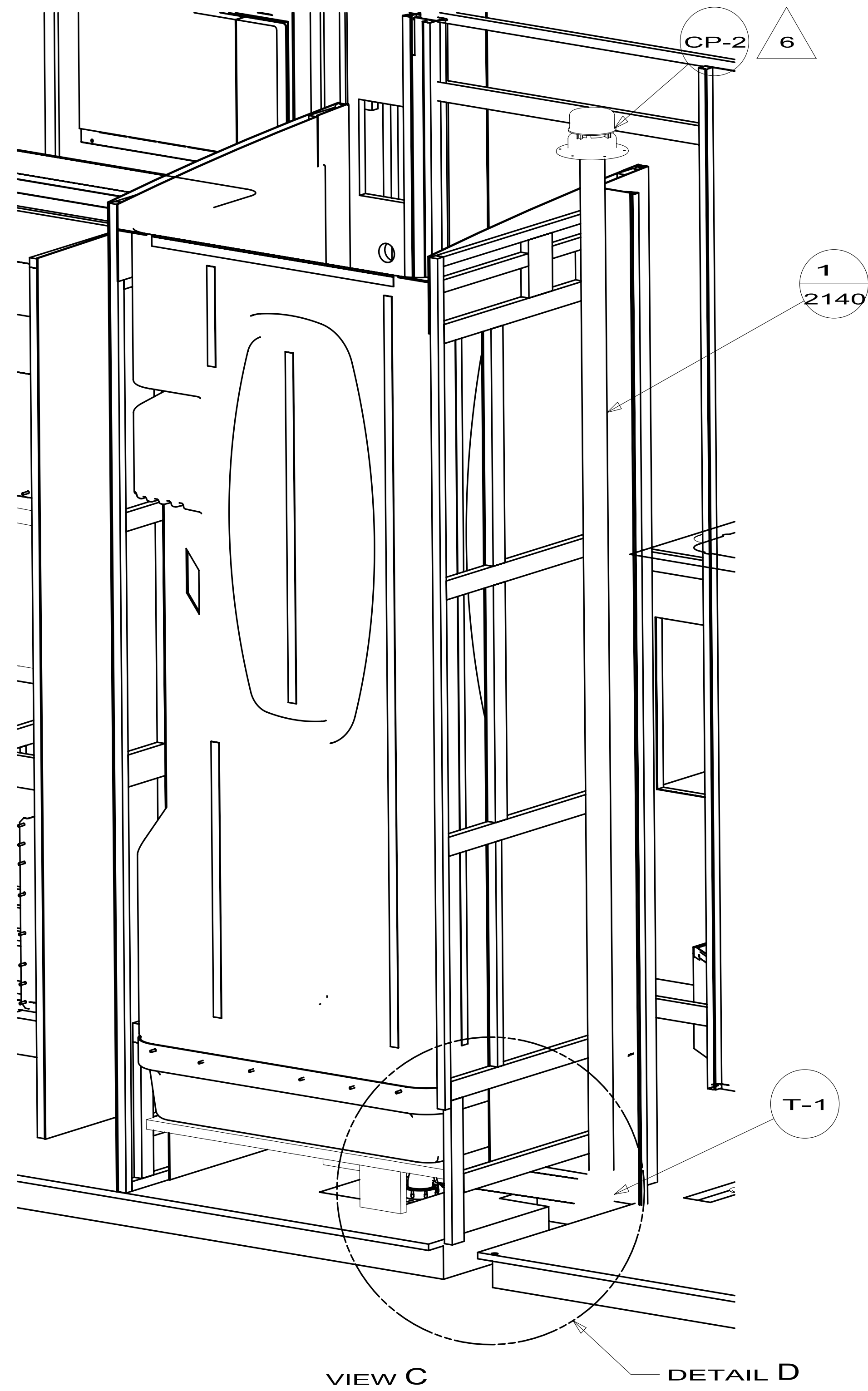


VIEW A

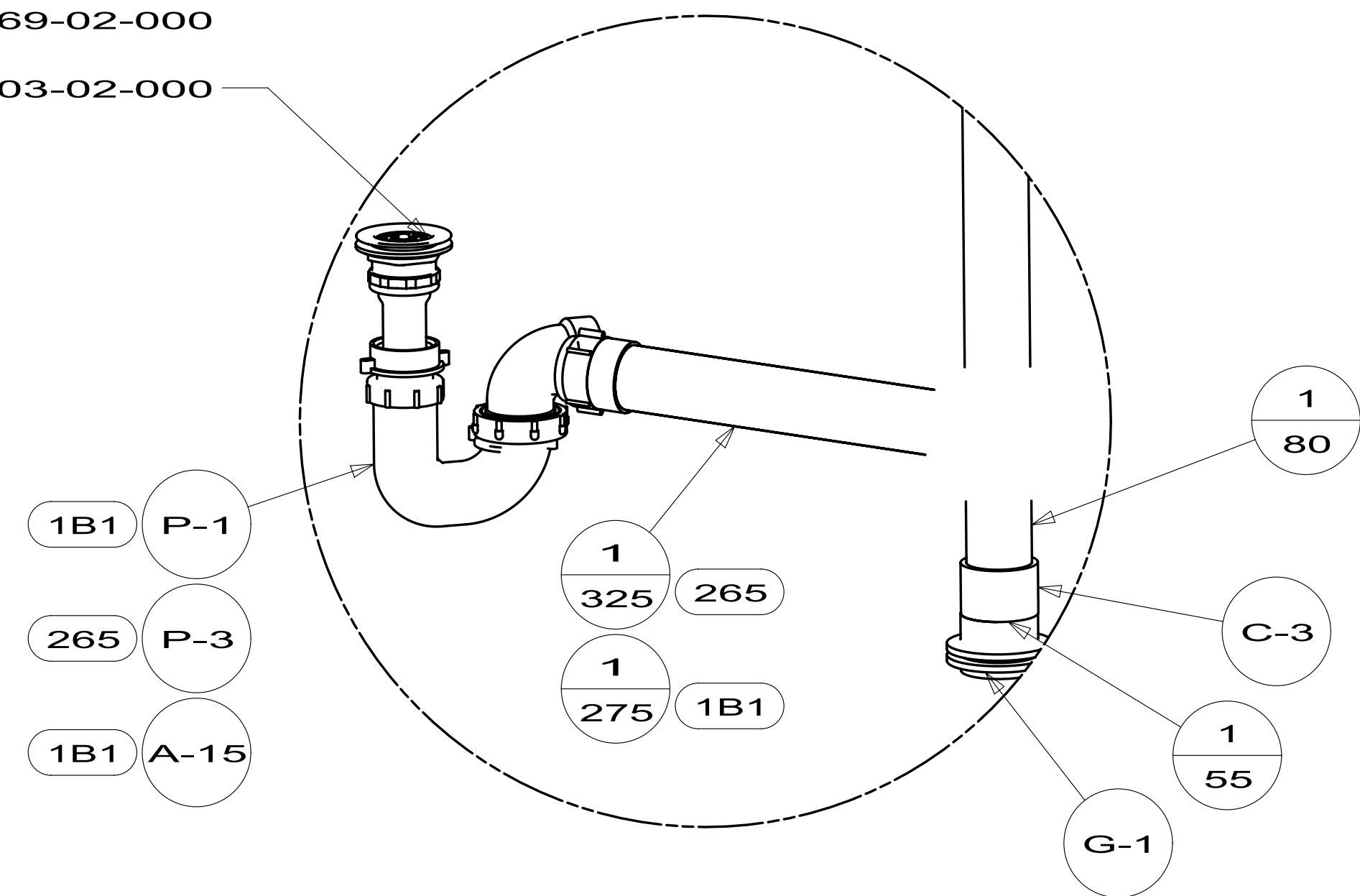


DETAIL B
(SHOWN W/OUT CABINETS & FLOOR)

FIRST USED	13 E26P	
TITLE:	DO NOT SCALE DRAWING	
	DRAINAGE SYSTEM INSTL	
SHEET 2	PART NO	180192
	REV	



- SHOWER INSTL
 147936-04-000
 000G11-08-12U (10)
 000G39-08-12U (6)
 STRAINER
 066440-01-000
 SEALER
 069640-01-000
 WASHER-RUBBER
 127440-02-CHT
 TAILPIECE
 011069-02-000
 NUT
 130403-02-000



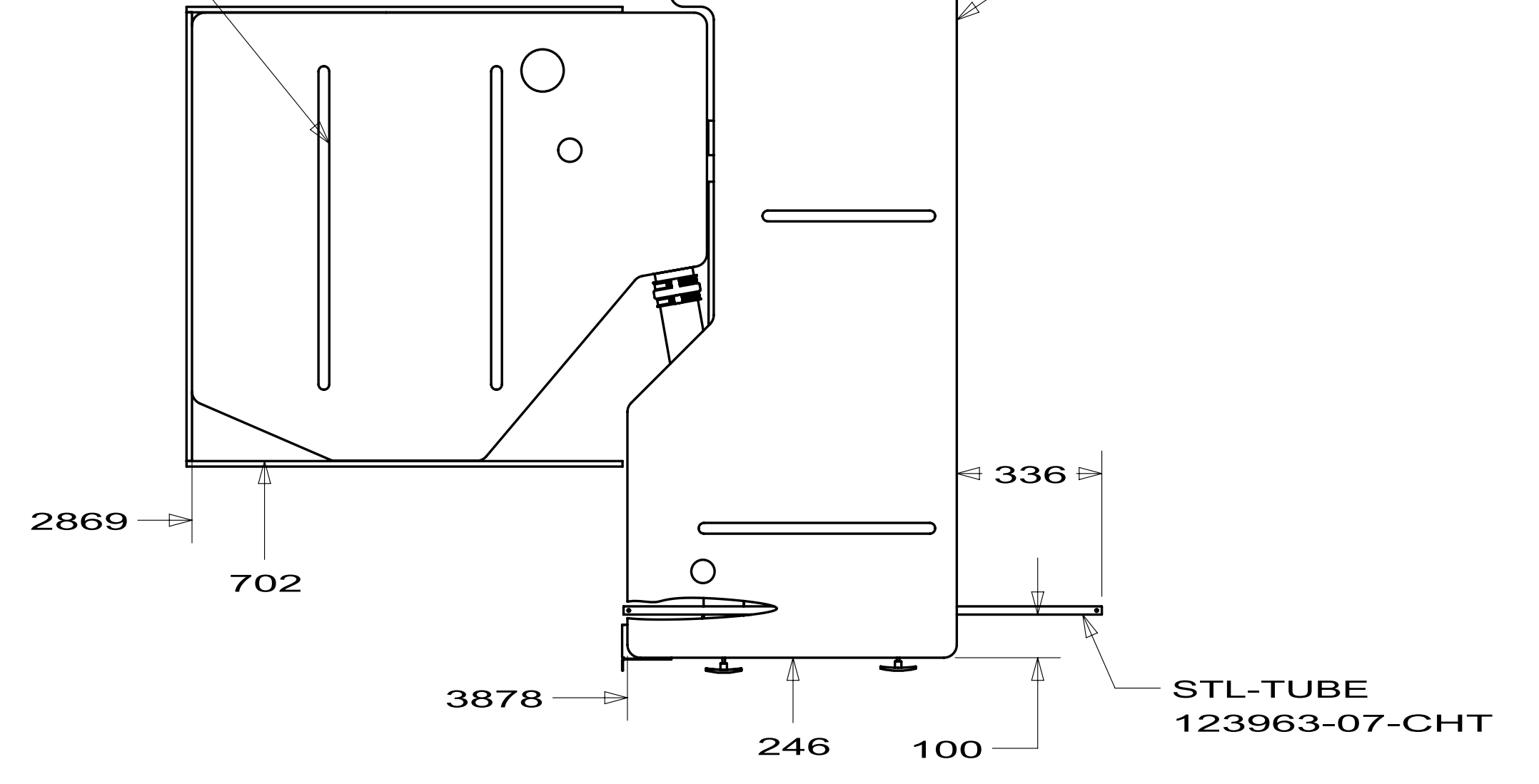
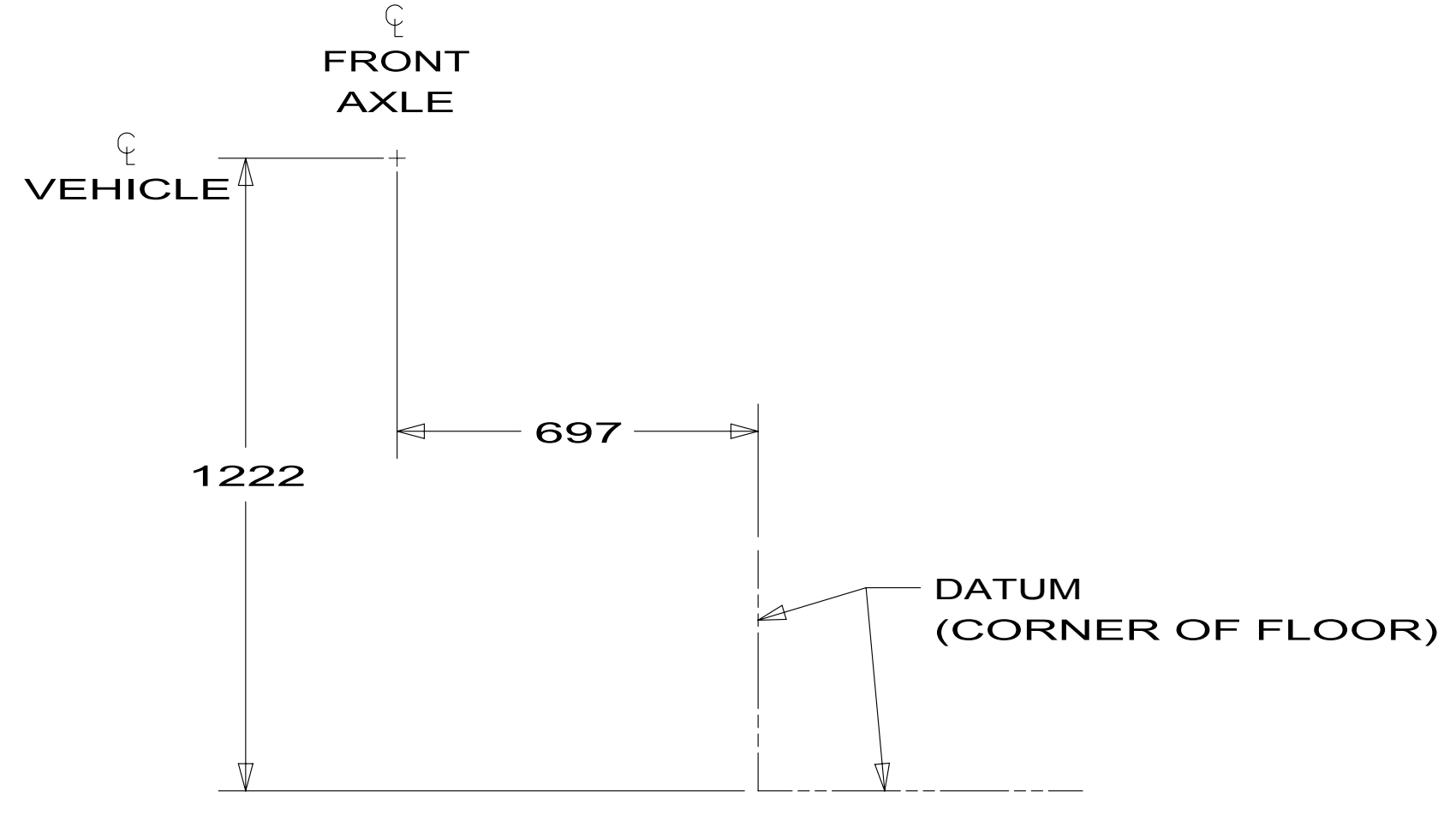
DETAIL D
 (SHOWN W/OUT SHOWER, CABINETS, & FLOOR)

FIRST USED		13 E26P	
DO NOT SCALE DRAWING			
TITLE: DRAINAGE SYSTEM INSTL			
SHEET 3	PART NO	180192	REV

BRACKET-HOLDING TANK
126796-06-CHT

TANK ASM-HOLDING, 43 GAL
154458-02-000

TANK ASM-HOLDING, 38 GAL
154457-05-000



PLATFORM-HOLDING TANK
126714-30-000(2)

INSULATION-DRAINAGE COMPT
120050-73-000

INSULATION-DRAINAGE COMPT
120050-72-000 (2)

BRACKET-HOLDING TANK
126796-04-CHT (2)

2
540

N-3

E-18

E-18

N-3

E-18

CP-1

A-2

H-1

T-5

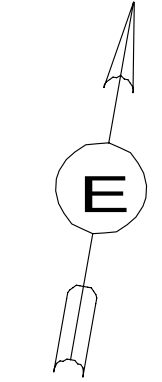
C-2

INSULATION-DRAINAGE COMPT
120050-74-000

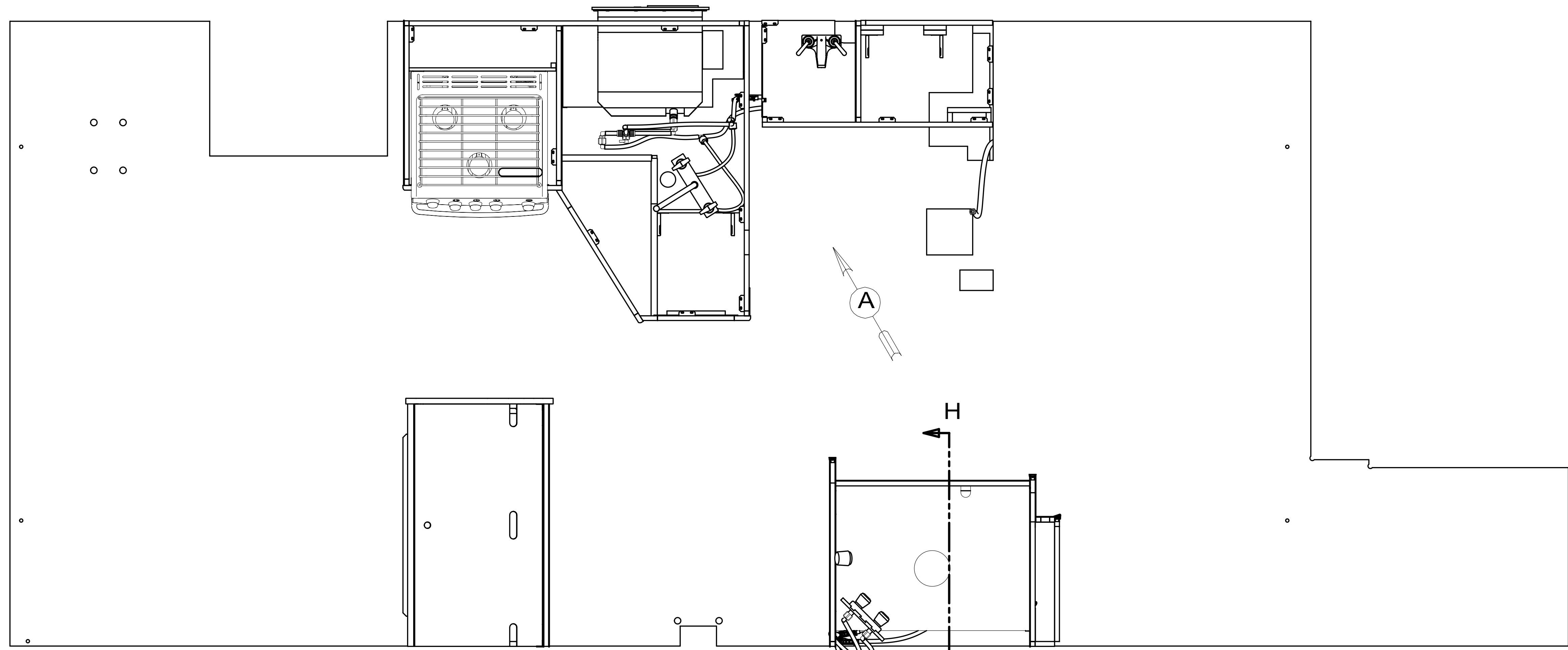
INSULATION-DRAINAGE COMPT
120050-16-000

FOAM-SUPPORT, HOLDING TANK
130223-04-000

VIEW E



FIRST USED	13 E26P	
TITLE:	DO NOT SCALE DRAWING	
	DRAINAGE SYSTEM INSTL	
SHEET 4	PART NO 180192	REV

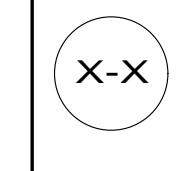


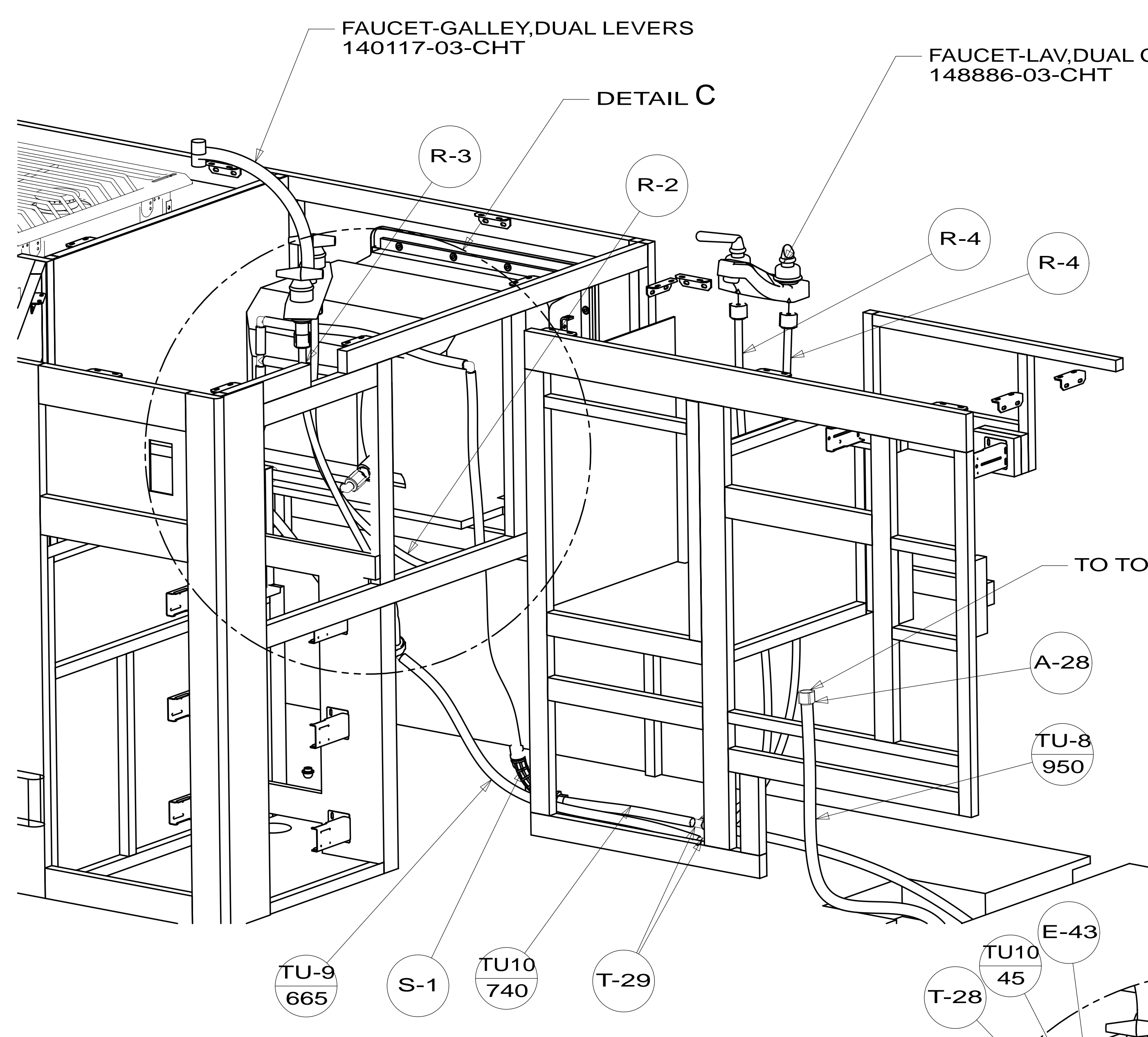
8. ALL CRIMP FITTINGS TO PEX TUBING REQUIRE 1/2" CLAMP 140171-03-000.
7. ALL CRIMP FITTINGS TO PEX TUBING REQUIRE 5/8" CLAMP 140171-04-000.
- 6 LABEL HOT AND COLD SUPPLY TUBES AND TAPE FITTING TO TUBE BEFORE CABINET SET TO PREVENT MOVEMENT.
- 5 ADD PIPE WRAP (LADDER SCRAP 110157-02-000) INSULATION.
- 4 ADD TEFLON TAPE 010405-02-000.
3. ALL TUBING TO BE SECURED AT 1200 INTERVALS MAXIMUM WITH CLAMP 010495-01-000 AND SCREW 000G67-10-12U OR EQUIVALENT.
2. TUBING TO BE INSTALLED WITH SUFFICIENT SLOPE TO PROVIDE DRAINAGE TO NEAREST VALVE.
1. PLASTIC FITTINGS TO BE SEALED WITH SEALANT 084456-01-000.

NOTES:

		COPYRIGHT 2012 WINNEBAGO INDUSTRIES, INC.	
DTR	ORIG. DATE	ALL DIMENSIONS ARE IN MILLIMETERS	
CHKR			
P.E.			
M.E.	FIRST USED	13 E26HE	
DSNR			
UNSPECIFIED TOLERANCES ARE:		MATERIAL:	
WHOLE DIM (X)	: 3		
ONE-PLACE (X.X)	: 1.5		
TWO-PLACE (X.XX)	: 0.50		
ANGLE	: 1°		
THIRD ANGLE PROJECTION			
DO NOT SCALE DRAWING		REFER TO ES0018 FOR FASTENER TIGHTENING GUIDELINES	
TITLE: WATER SYSTEM INSTL			
SHEET 1 OF 4	PART NO	182586	REV
REF:	1		

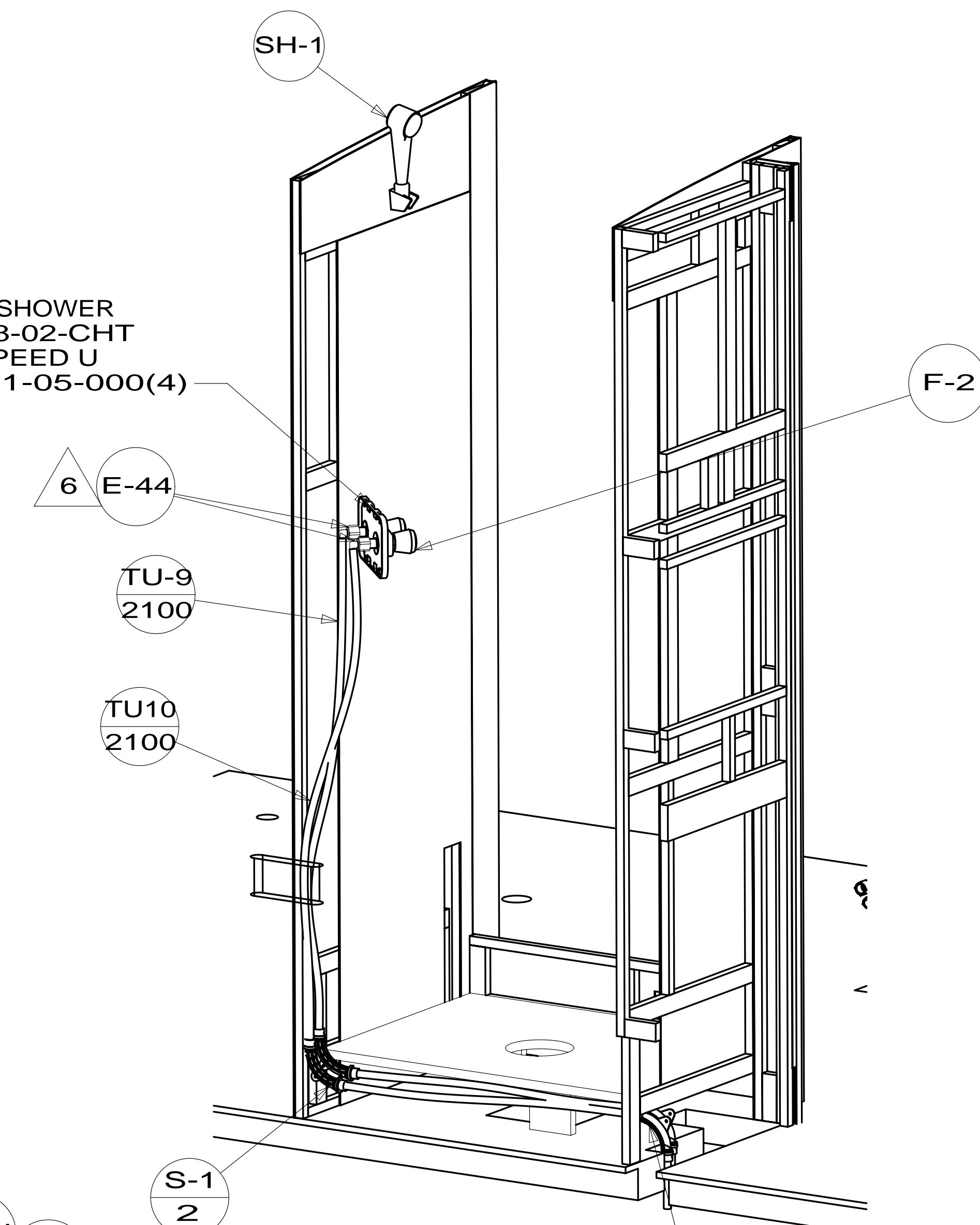
FOR WATER CALLOUTS SEE DWG NO 116230-01-000



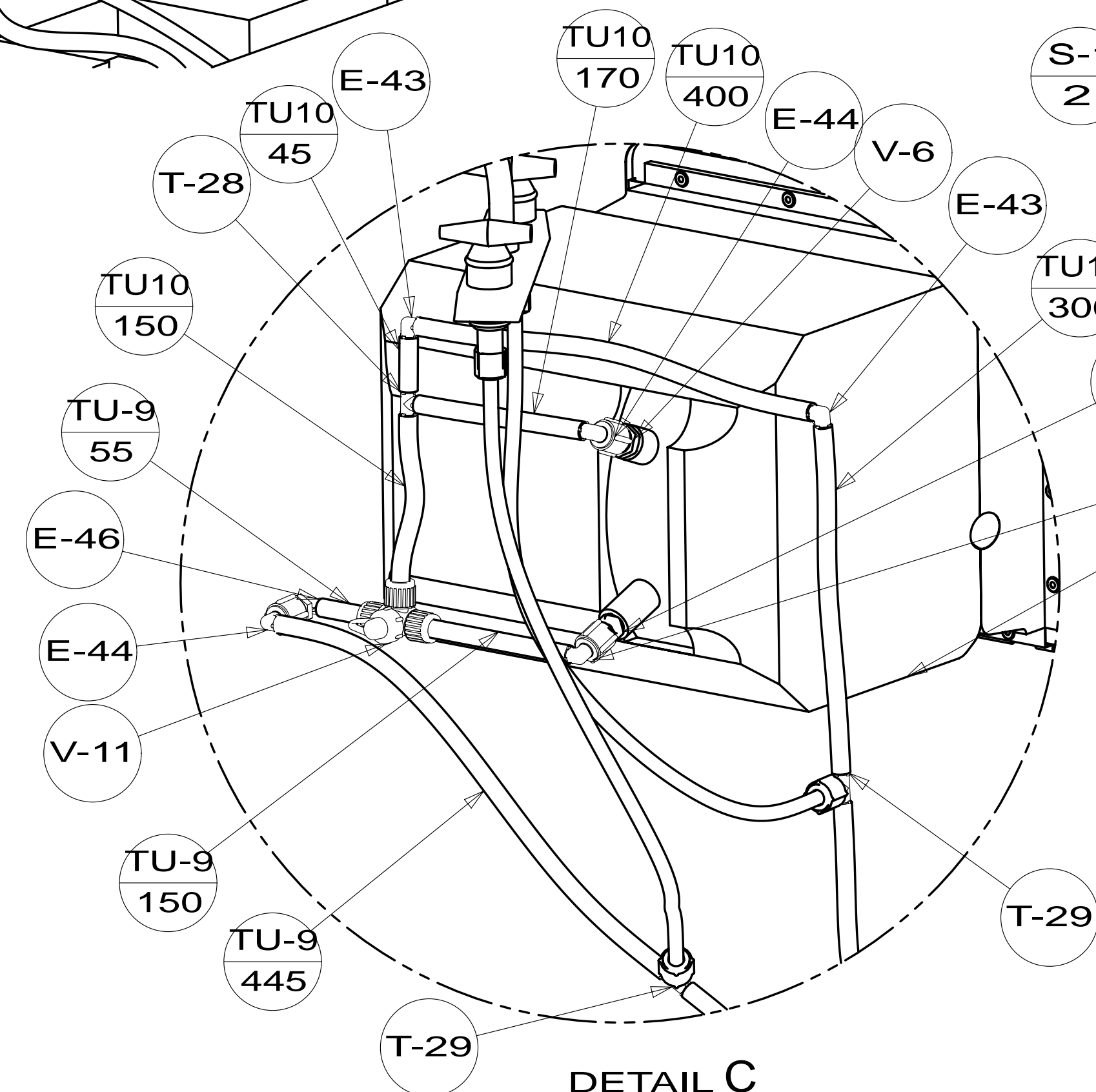


VIEW A

PANEL-SHOWER
167738-02-CHT
NUT-SPEED U
040921-05-000(4)

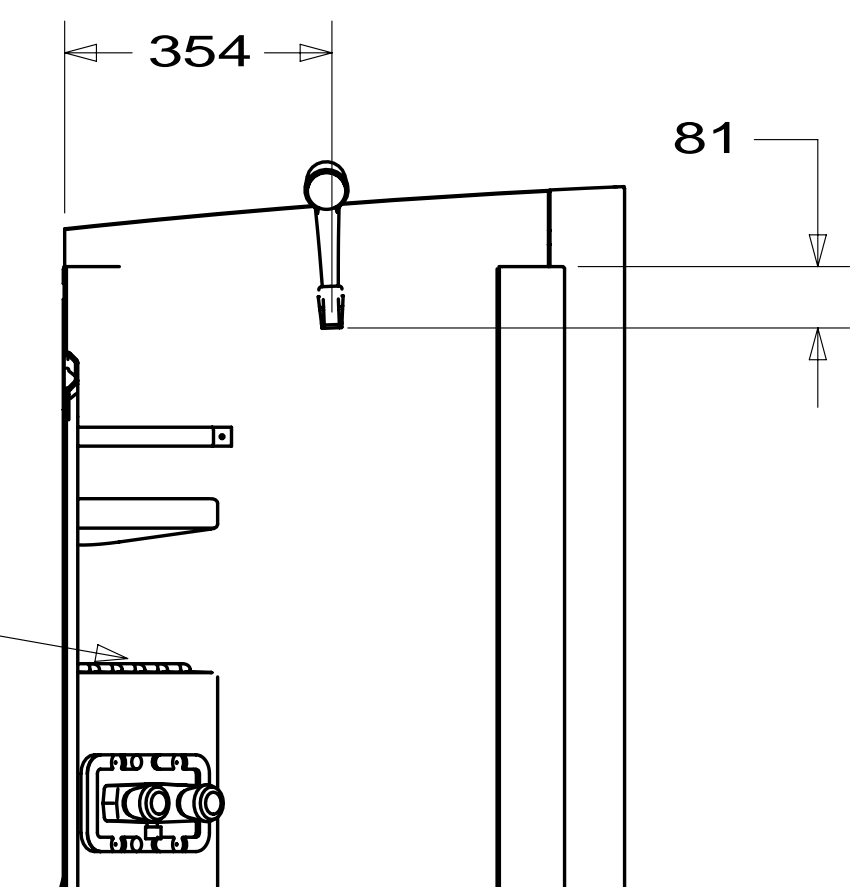


VIEW B



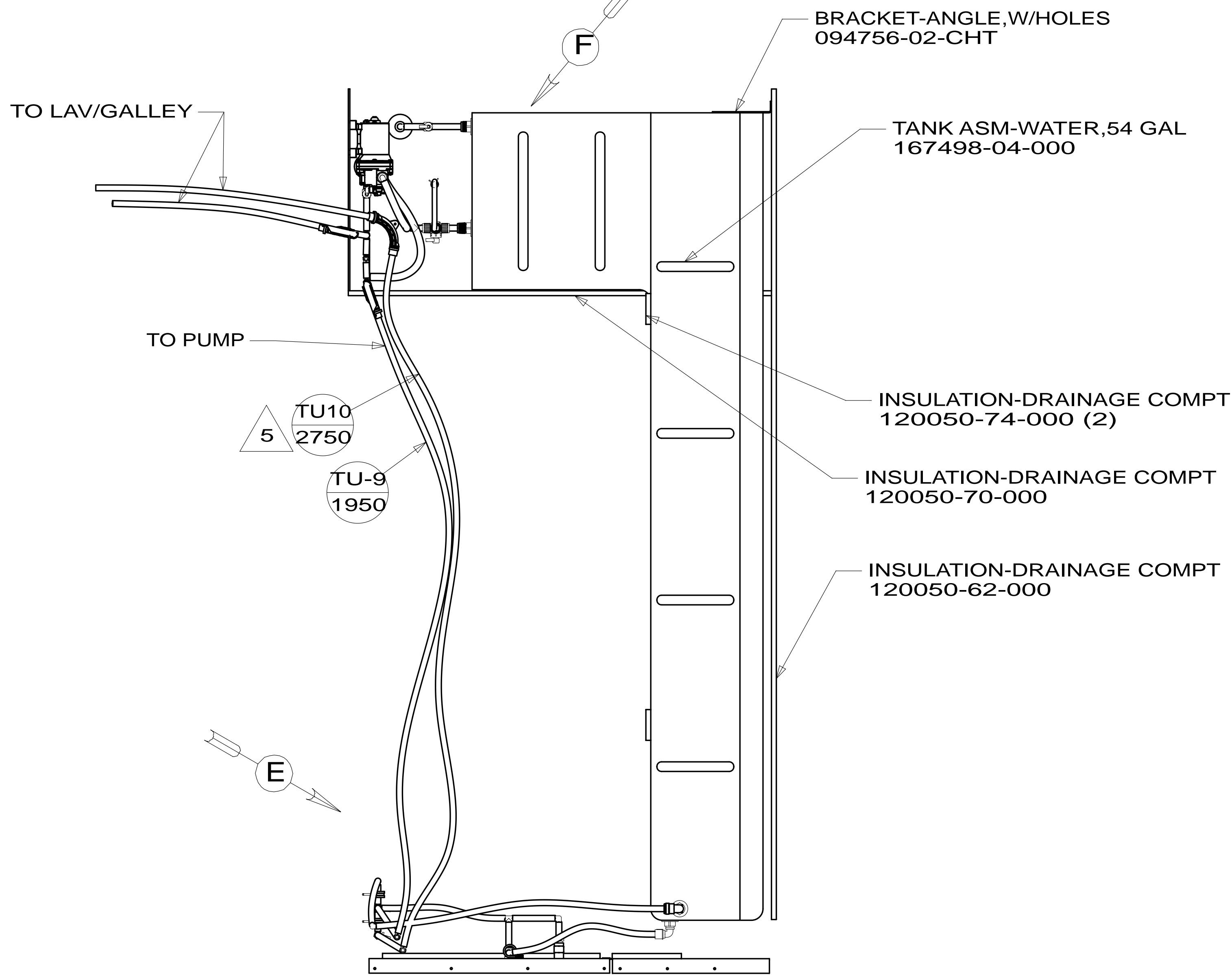
DETAIL C

- WATER HEATER-6 GAL
051391-03-000
- DOOR
125420-06-CHT
- SCREW
000G39-10-48B(2)
- AL EXTR
002726-01-210(2)
- 002726-01-212(2)
- SCREW
000G39-10-169(18)
- CABLE
076767-03-000
- SCREW
000G11-06-08B(2)
- SEALANT

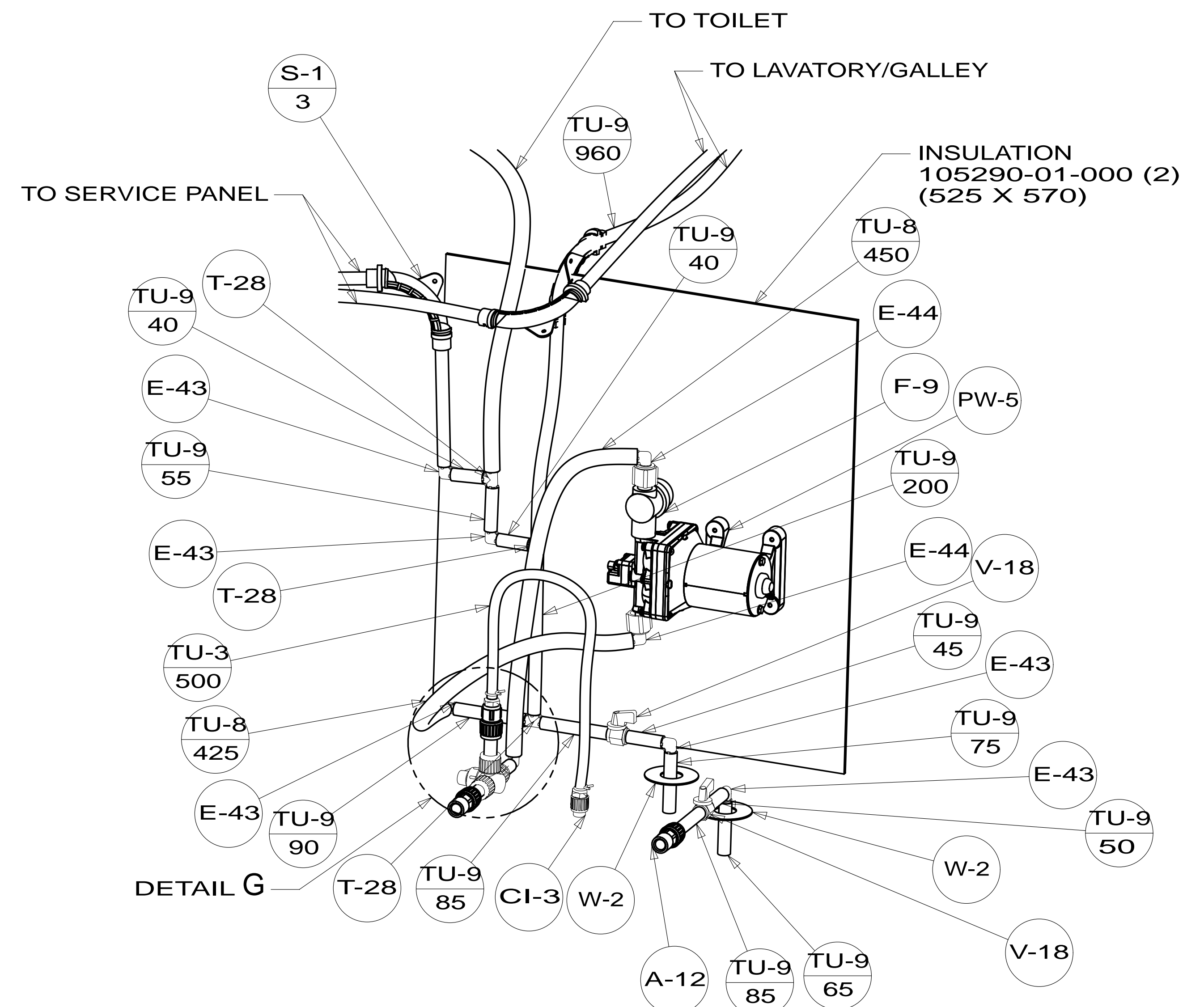
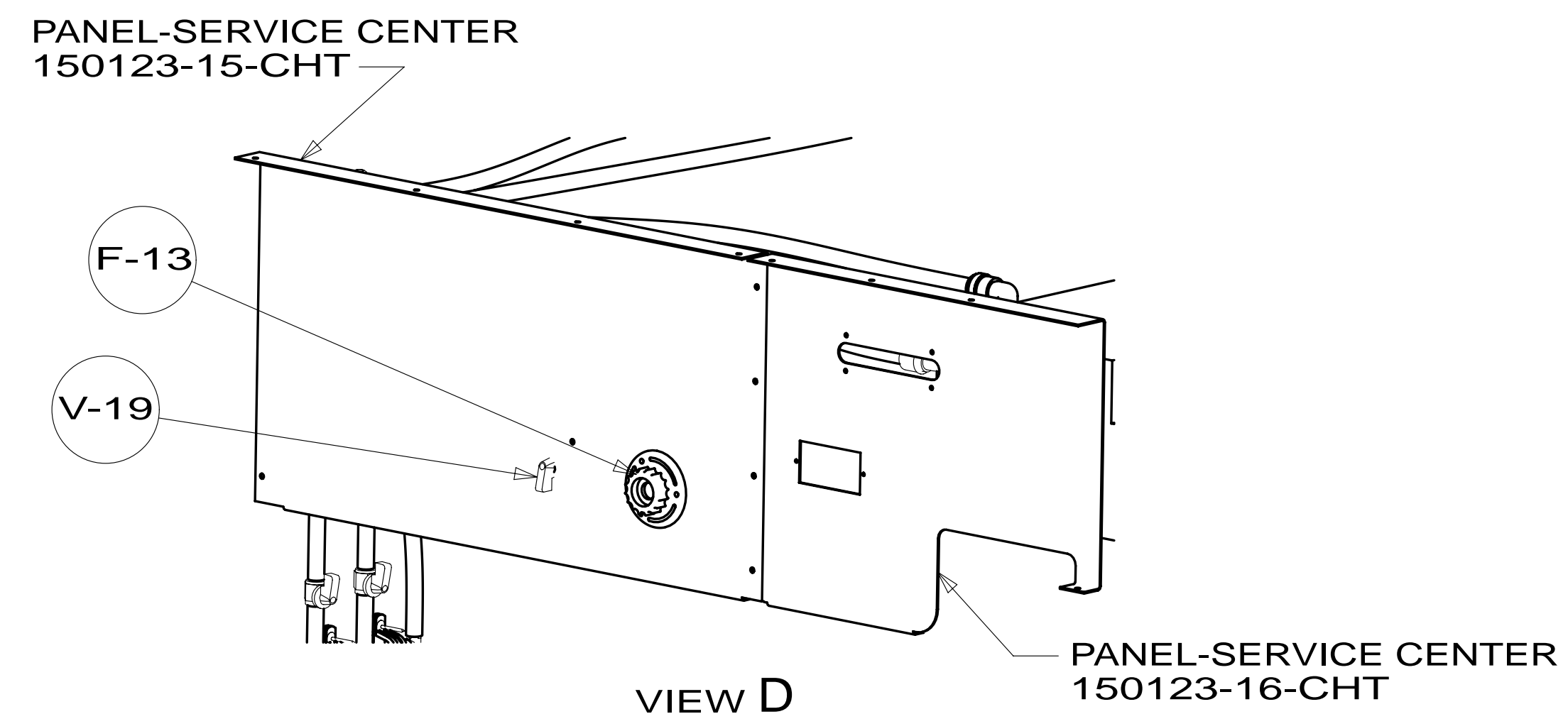


SECTION H-H

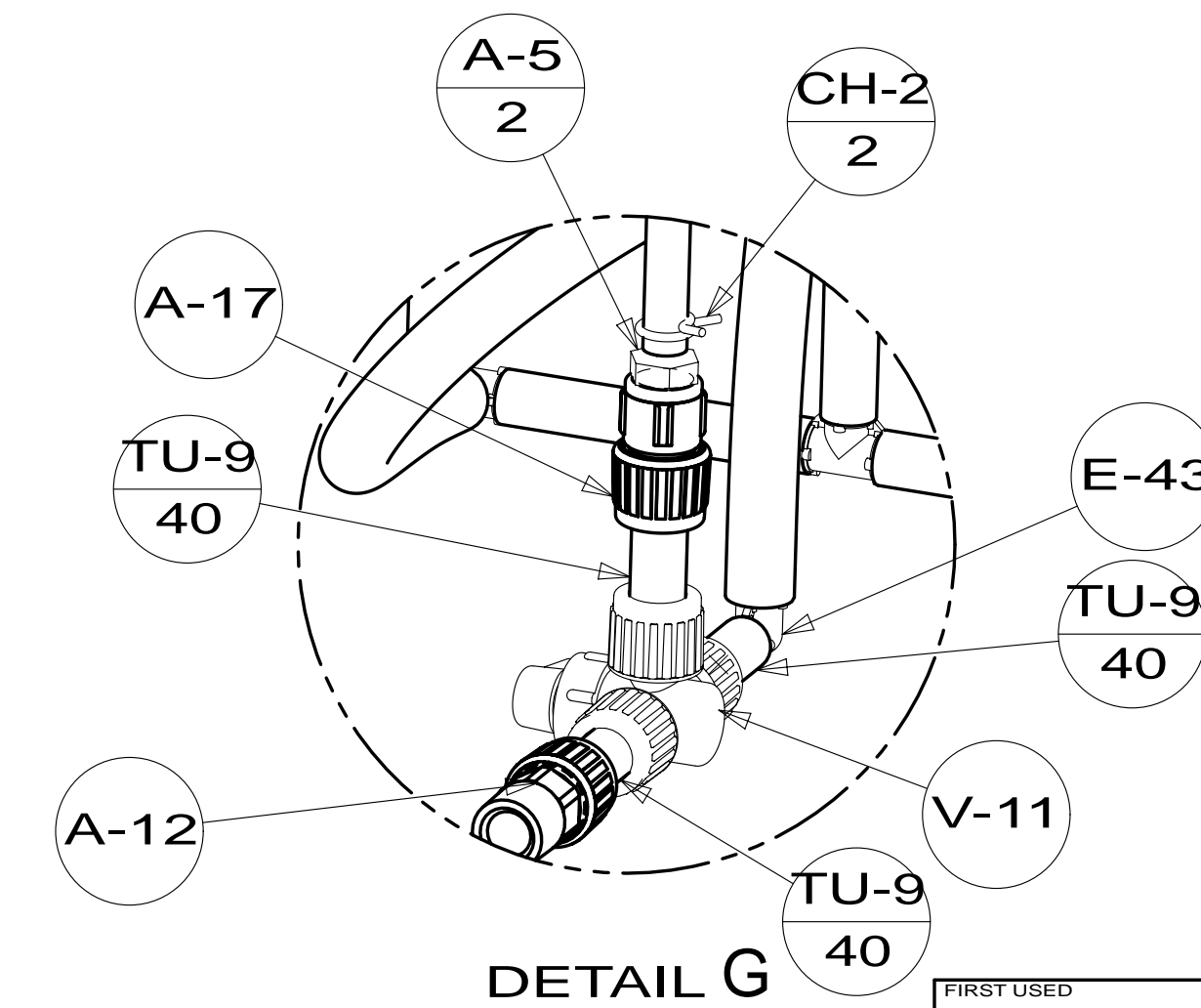
FIRST USED	13 E26HE	
TITLE:	DO NOT SCALE DRAWING	
	WATER SYSTEM INSTL	
SHEET 2	PART NO	182586
	REV	



TOP VIEW
SHOWING LINES UNDER FLOOR & TANKS

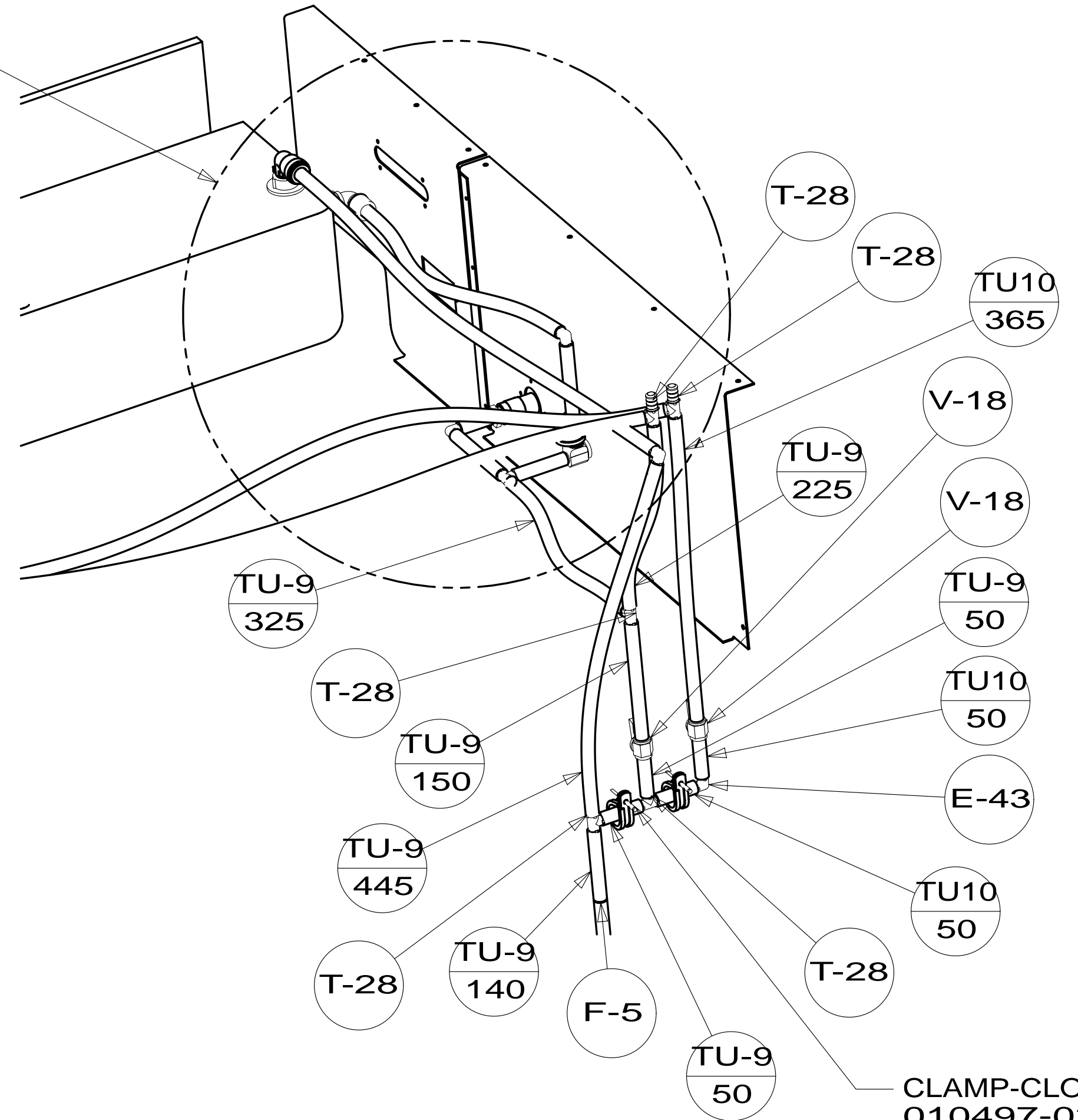


VIEW F
(SHOWN W/O TANKS)



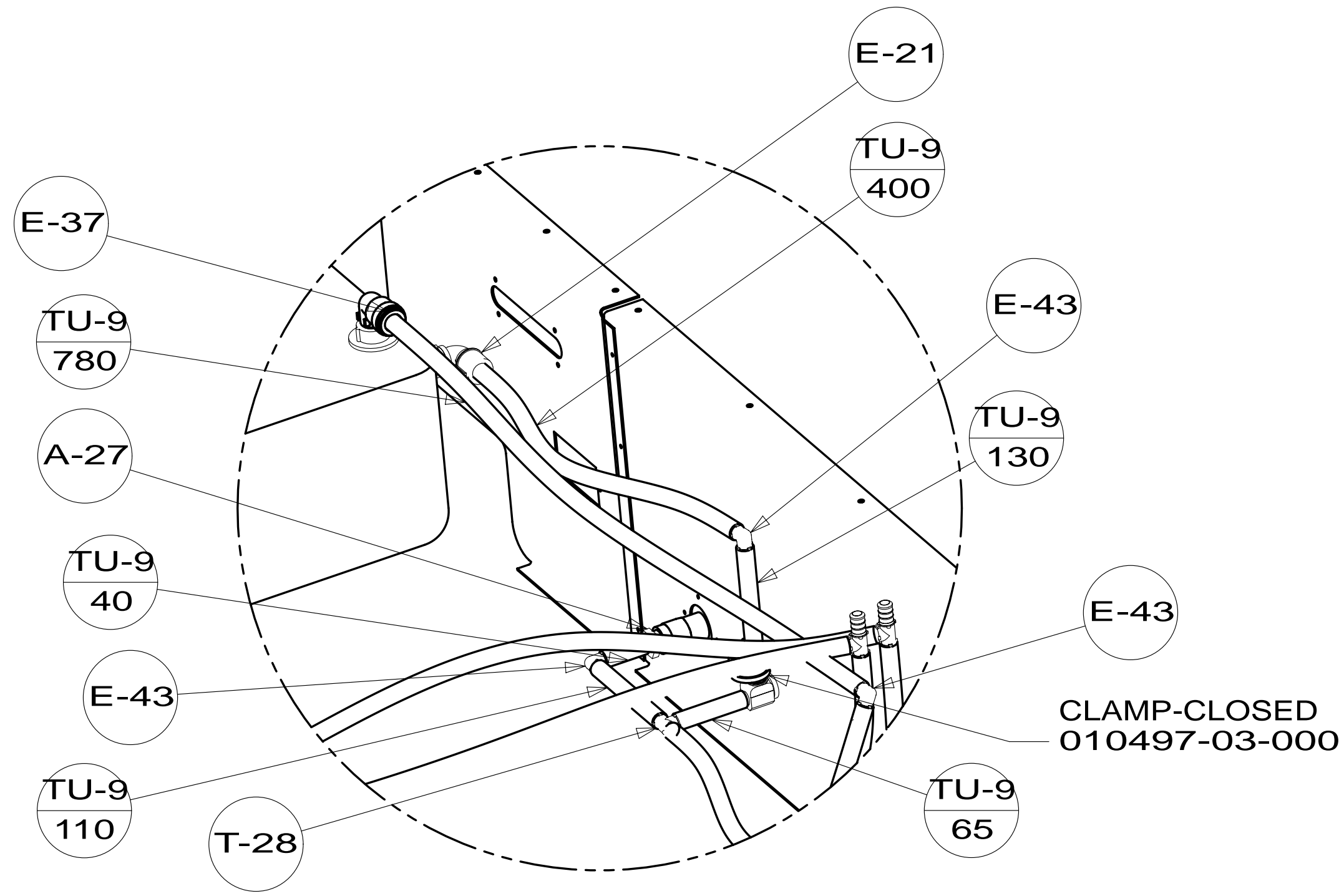
FIRST USED	13 E26HE
TITLE:	DO NOT SCALE DRAWING
	WATER SYSTEM INSTL
SHEET 3	PART NO 182586 REV

DETAIL K



VIEW E

CLAMP-CLOSED
 010497-03-000(2)
 RIVET-POP-AL 3/16 X .8-.375
 118626-01-CHT (2)



DETAIL K

CLAMP-CLOSED
 010497-03-000

FIRST USED	13 E26HE		
TITLE:	DO NOT SCALE DRAWING		
TITLE:	WATER SYSTEM INSTL		
SHEET 4	PART NO	182586	REV